



*Delaware Health and Social Services*

*Division of Medicaid and Medical Assistance*

**CHILDREN WITH MEDICAL COMPLEXITY ADVISORY  
COMMITTEE**



# BACKGROUND

- The following information is based on work conducted by the Children with Medical Complexity (CMC) Data Workgroup in support of the following priority area:
  - Identification of the Medicaid/CHIP population of children with medical complexity.
- In order to accomplish this task, the group utilized claims data from calendar year 2017 and applied the logic found in Clinical Risk Groups (CRGs), a population classification system that uses inpatient and ambulatory diagnosis and procedure codes, pharmaceutical data and functional health status to assign each individual to a single, severity-adjusted group.
- This process helps to identify and describe the health status and burden of illness in a population and identify medically complex individuals.
- Preliminary results of the workgroup's findings are offered in the following slides.



# CLINICAL RISK GROUP (CRG) CATEGORIES

	Non-Chronic (CRGs 1, 2)	Episodic Chronic (CRGs 3, 4)	Lifelong Chronic (CRG 5)	Complex Chronic (CRGs 6, 7, 9)	Malignancies (CRG 8)
Brief Description	Acute conditions that will not last one year	Chronic conditions that will last one year and are likely to be episodic in manifestation  Potentially curable with adequate treatment  Not likely to last into adulthood	More severe primary condition in one body system that is more likely to cause significant long-lasting health impairment	Significant chronic condition in two or more body systems  or Progressive or life limiting chronic conditions  or Conditions requiring a dependency on technology	Malignancies requiring active treatment
Example Conditions	Fracture, pneumonia, appendicitis, trauma	Asthma, depression, conduct disorders	Type 1 diabetes, congenital heart disease	A child with diabetes, encephalopathy and chronic pulmonary disease. Down syndrome, cerebral palsy, cystic fibrosis	Leukemia, bone tumors, brain tumors

*\*Category 5 is further broken into two subcategories - 5a and 5b. The definition of medically complex children includes 5b - Single Dominant Chronic Disease, such as those with Sickle Cell Disease or Congenital Heart Disease*



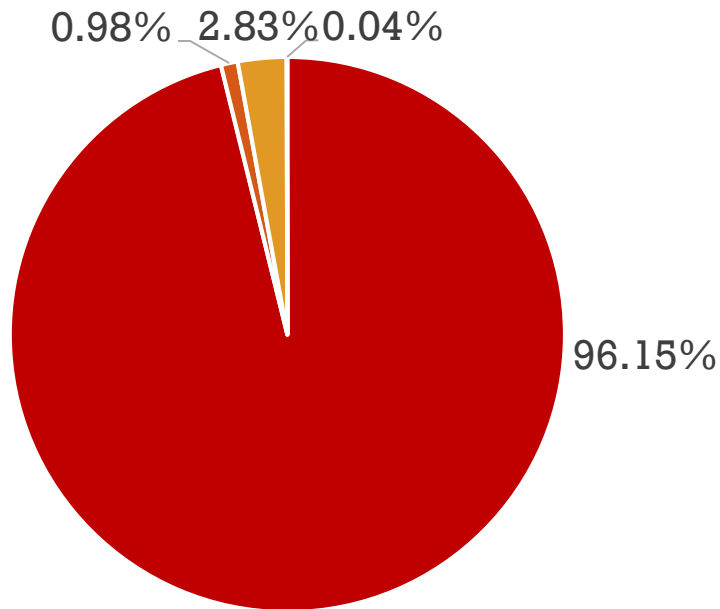
# CHILDREN ENROLLED IN DELAWARE MEDICAID AND CHIP PROGRAMS

Population Count of Children Enrolled in Delaware Medicaid and CHIP Programs Calendar Year 2017					
	General Population	Children with Medical Complexity			Total Population
	1-5a	5b	6, 7, 9	8	1-9
<b>Count</b>	107,902	1,104	3,178	40	112,224

Total Population of Medicaid Children with Medical Complexity = **4,322**



# COMPLEXITY OF CHILDREN ENROLLED IN DELAWARE MEDICAID AND CHIP PROGRAMS CALENDAR YEAR 2017



Percentage of Medicaid Population of Children with Medical Complexity = 3.85%

- General Population (1-5a)
- Children with Medical Complexity (5b)
- Children with Medical Complexity (6,7,9)
- Children with Medical Complexity (8)



# GENDER BREAKDOWN OF ENROLLED CHILDREN

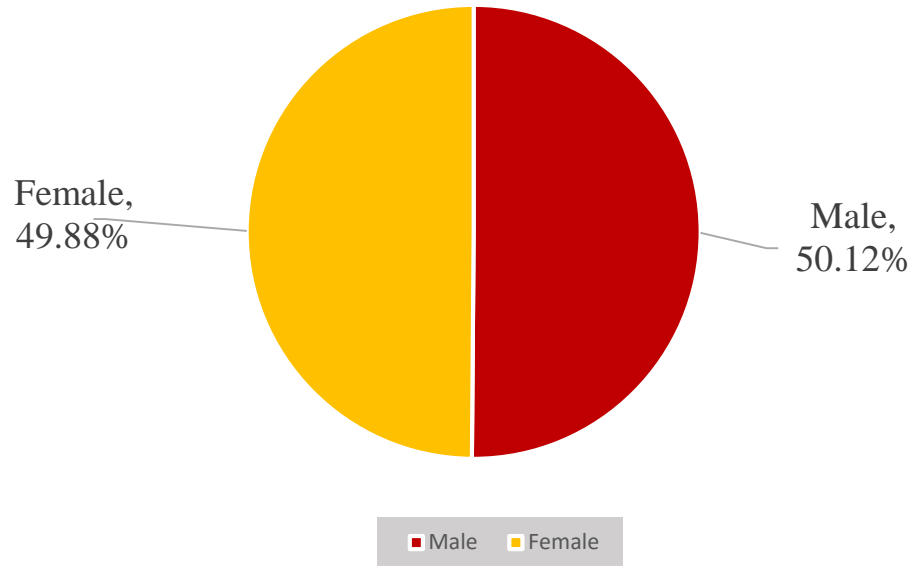
## Gender of Children enrolled in Delaware Medicaid and CHIP Programs Calendar Year 2017

<u>Gender</u>	General Population	Children with Medical Complexity			Total Population
	1-5a	5b	6,7,9	8	1-9
Male	53,920	573	1,735	23	56,251
Female	53,982	531	1,443	17	55,973
Total	107,902	1,104	3,178	40	112,224

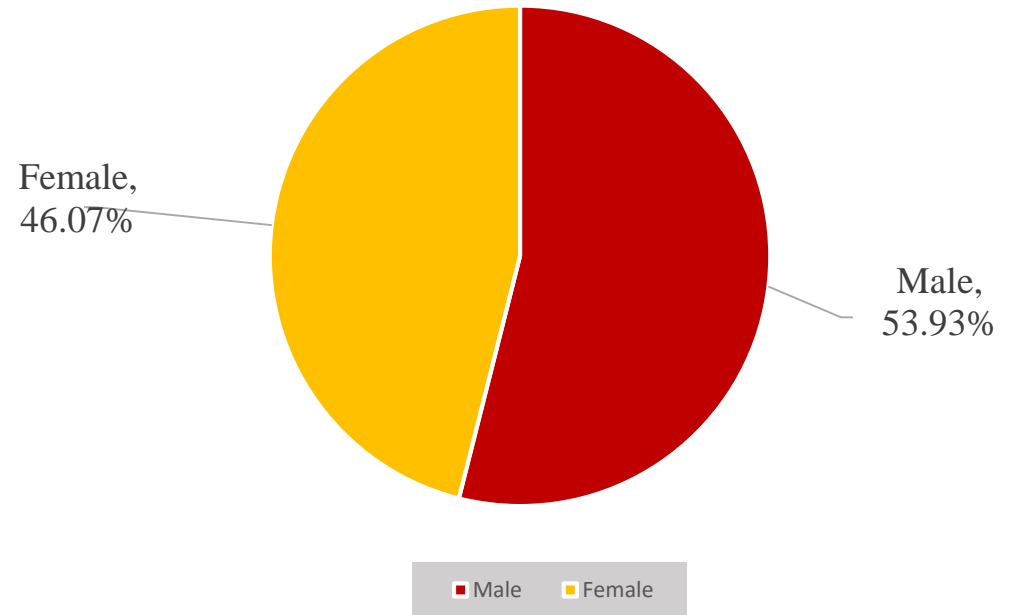


# GENDER OF CHILDREN ENROLLED IN DELAWARE MEDICAID AND CHIP PROGRAMS CALENDAR YEAR 2017

Total Population (Gender)



CMC Population (Gender)



# AGE OF ENROLLED CHILDREN

**Age of Children enrolled in Delaware Medicaid and CHIP Programs  
Calendar Year 2017**

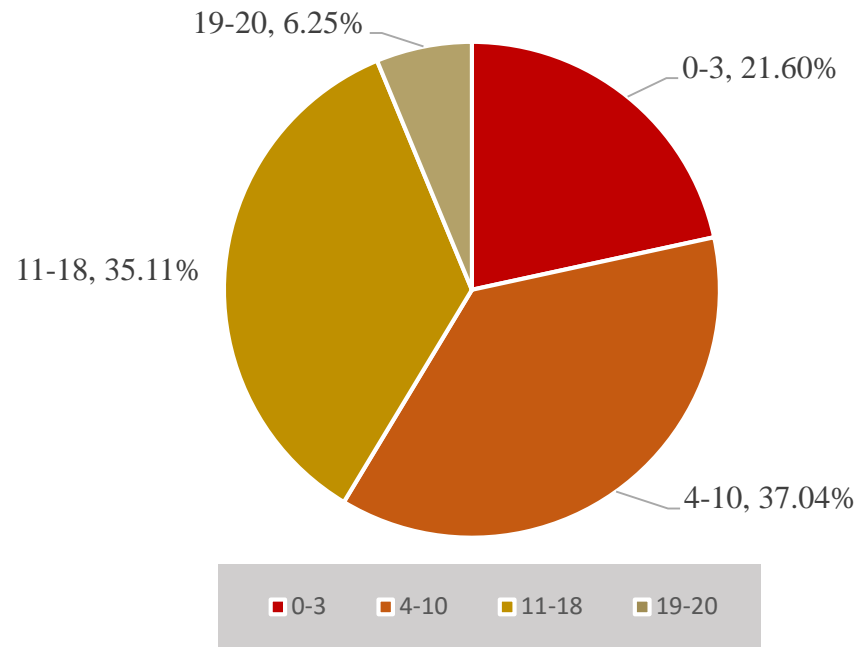
<b>Age</b>	<b>General Population</b>	<b>Children with Medical Complexity</b>			<b>Total Population</b>
	1-5A	5B	6,7,9	8	1-9
0-3	23,569	183	484	4	24,240
4-10	40,379	240	926	20	41,565
11-18	37,492	522	1,379	14	39,407
19-20	6,462	159	389	2	7,012
<b>Total</b>	<b>107,902</b>	<b>1,104</b>	<b>3,178</b>	<b>40</b>	<b>112,224</b>





# AGE OF CHILDREN ENROLLED IN DELAWARE MEDICAID AND CHIP PROGRAMS CALENDAR YEAR 2017

Total Population (Age)



CMC Population (Age)

