



# DELAWARE VITAL STATISTICS ANNUAL REPORT REPORTED PREGNANCIES, 2015

*Suggested Citation:*

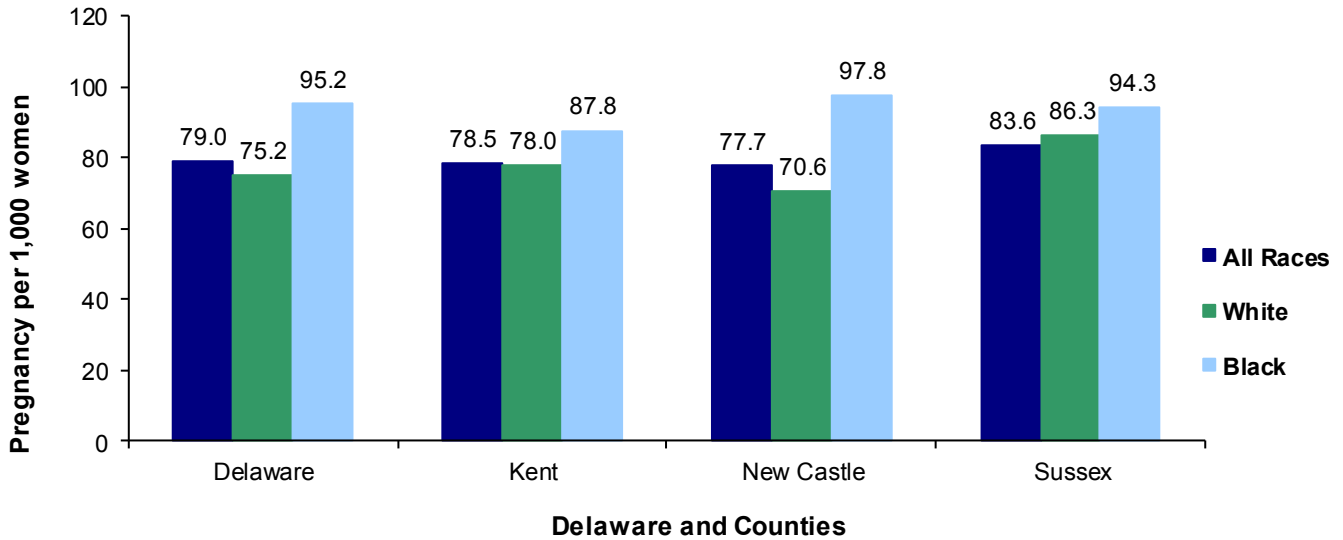
Delaware Health Statistics Center. *Delaware Vital Statistics Annual Report, 2015.*

Delaware Health and Social Services, Division of Public Health: 2017.

## REPORTED PREGNANCIES

At 79 reported pregnancies per 1,000 women ages 15-44, the 2011-2015 rate of reported pregnancies remained stable. Although pregnancy rates of black mothers were significantly higher than those of white mothers in every county, the largest difference between the pregnancy rate of white (70.6 percent) and black (97.8 percent) mothers occurred in New Castle County.

**Figure 21. Five-year Average Rate of Reported Pregnancies by Race, Delaware and Counties, 2011-2015**

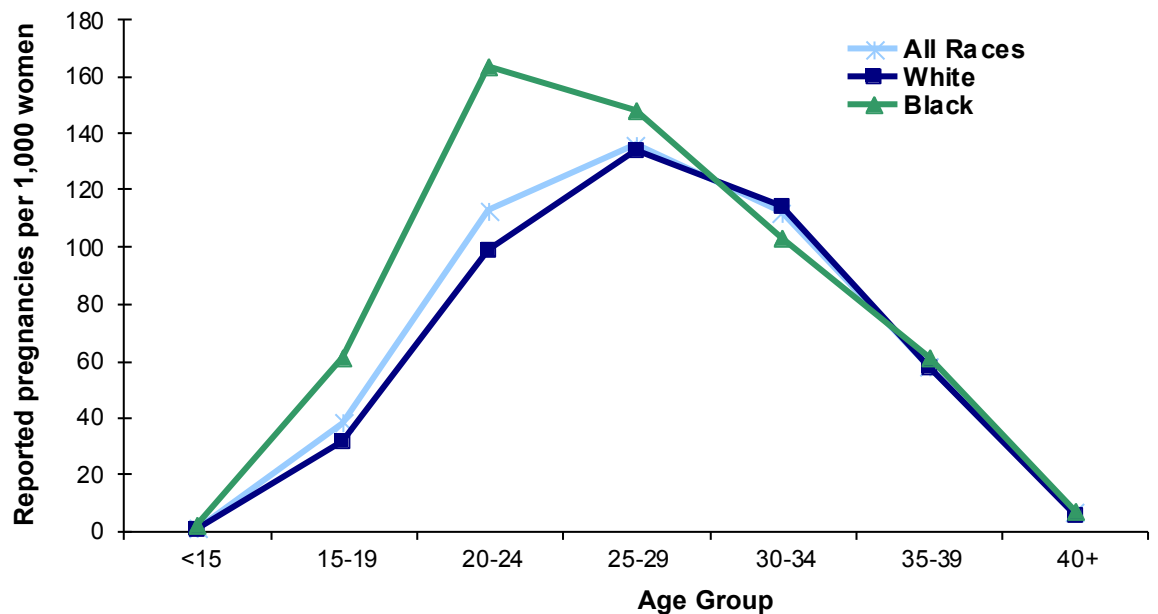


Source: Delaware Health and Social Services, Division of Public Health, Delaware Health Statistics Center

**Figure 22. Five-year Average Rate of Reported Pregnancies by Age and Race, Delaware, 2011-2015**

For women of all races, the 25-29 year age group had the highest pregnancy rate, at 136 pregnancies per 1,000 women in 2011-2015.

Black women had higher pregnancy rates than white women in all age groups except the 30-34 age group.

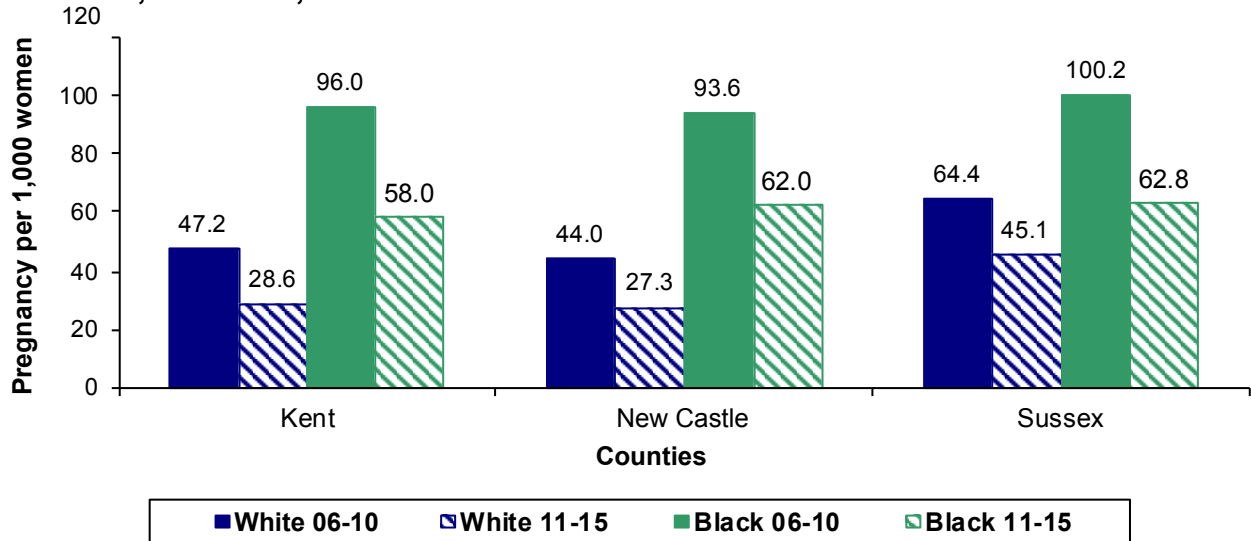


Source: Delaware Health and Social Services, Division of Public Health, Delaware Health Statistics Center

## REPORTED PREGNANCIES

In all three counties the teen (15-19) pregnancy rates for all races declined between 2006-2010 and 2011-2015. Although all three Counties had a significant decline in the black teen pregnancy rate, Kent County's black teen pregnancy rate showed the greatest decline from 96 in 2006-2010 to 58 in 2011-2015. White teens in New Castle County had the lowest reported pregnancy rate at 27.3 pregnancies per 1,000 women in 2011-2015. With the exception of Sussex County, where white teen pregnancy rates were the highest, black teen pregnancy rates were more than twice that of white teens.

**Figure 23. Five-year Average Teenage (15-19) Pregnancy Rates by County and Race, Delaware, 2006-2010 and 2011-2015**



Source: Delaware Health and Social Services, Division of Public Health, Delaware Health Statistics Center

- ▶ The five-year average (2011-2015) pregnancy rate for younger teens ages 15-17 was lowest in Kent County, with 16.3 pregnancies per 1,000 females, followed by New Castle County with a rate of 19 and Sussex County with a rate of 21.6 (see Table D-8). The rates decreased in all three counties between 2006-2010 and 2011-2015.
- ▶ The five-year average (2011-2015) pregnancy rate for older teens ages 18-19 was lowest in New Castle County (60.5 pregnancies per 1,000 females), and highest in Sussex County (79.9).
- ▶ In 2015, there were 2,785 abortions performed in Delaware: 2,364 to Delaware residents and 421 to non-residents.
  - One fourth of all pregnancies to females under 15 ended in termination.
    - ⇒ 16.7 percent of pregnancies to white females under 15, and 30 percent of pregnancies to black females under 15, ended in terminations.
  - Married women undergo significantly fewer terminations than their single counterparts.
    - ⇒ 3 percent of pregnancies to white married women ended in termination and 7.8 percent of pregnancies to black married women ended in termination.
    - ⇒ When the women were unmarried, these numbers increased to 25.9 percent among white women and 31.1 percent among black women.
  - There were 68 fetal deaths of Delaware residents in 2015.
  - There were 11,147 live births to Delaware residents in 2015.

**TABLE D-1. NUMBER AND PERCENT OF REPORTED PREGNANCIES BY AGE OF WOMAN, COUNTY, AND DELAWARE, 2015**

Area/ Age	Reported Pregnancies							
	Total		Live Births		Fetal Deaths		Induced Terminations	
	Number	Percent	Number	Percent	Number	Percent	Number	Percent
<b>Delaware</b>	13579	100.0	11147	82.1	68	0.5	2364	17.4
<15	17	100.0	13	76.5	0	0.0	4	23.5
15-19	823	100.0	540	65.6	4	0.5	279	33.9
15-17	241	100.0	142	58.9	0	0.0	99	41.1
18-19	582	100.0	398	68.4	4	0.7	180	30.9
20-24	3060	100.0	2280	74.5	15	0.5	765	25.0
25-29	3967	100.0	3320	83.7	16	0.4	631	15.9
30-34	3623	100.0	3197	88.2	21	0.6	405	11.2
35-39	1720	100.0	1494	86.9	9	0.5	217	12.6
40+	369	100.0	303	82.1	3	0.8	63	17.1
Unknown	0	...	0	...	0	...	0	...
<b>Kent</b>	2681	100.0	2258	84.2	13	0.5	410	15.3
<15	3	100.0	3	100.0	0	0.0	0	0.0
15-19	149	100.0	96	64.4	1	0.7	52	34.9
15-17	43	100.0	26	60.5	0	0.0	17	39.5
18-19	106	100.0	70	66.0	1	0.9	35	33.0
20-24	731	100.0	576	78.8	3	0.4	152	20.8
25-29	847	100.0	736	86.9	4	0.5	107	12.6
30-34	612	100.0	543	88.7	1	0.2	68	11.1
35-39	288	100.0	261	90.6	4	1.4	23	8.0
40+	51	100.0	43	84.3	0	0.0	8	15.7
Unknown	0	...	0	...	0	...	0	...
<b>New Castle</b>	8237	100.0	6585	79.9	43	0.5	1609	19.5
<15	8	100.0	5	62.5	0	0.0	3	37.5
15-19	476	100.0	291	61.1	3	0.6	182	38.2
15-17	140	100.0	78	55.7	0	0.0	62	44.3
18-19	336	100.0	213	63.4	3	0.9	120	35.7
20-24	1681	100.0	1171	69.7	9	0.5	501	29.8
25-29	2316	100.0	1868	80.7	9	0.4	439	19.0
30-34	2375	100.0	2087	87.9	15	0.6	273	11.5
35-39	1114	100.0	949	85.2	4	0.4	161	14.5
40+	267	100.0	214	80.1	3	1.1	50	18.7
Unknown	0	...	0	...	0	...	0	...
<b>Sussex</b>	2661	100.0	2304	86.6	12	0.5	345	13.0
<15	6	100.0	5	83.3	0	0.0	1	16.7
15-19	198	100.0	153	77.3	0	0.0	45	22.7
15-17	58	100.0	38	65.5	0	0.0	20	34.5
18-19	140	100.0	115	82.1	0	0.0	25	17.9
20-24	648	100.0	533	82.3	3	0.5	112	17.3
25-29	804	100.0	716	89.1	3	0.4	85	10.6
30-34	636	100.0	567	89.2	5	0.8	64	10.1
35-39	318	100.0	284	89.3	1	0.3	33	10.4
40+	51	100.0	46	90.2	0	0.0	5	9.8
Unknown	0	...	0	...	0	...	0	...

*Notes:*

1. Percentages may not add to 100% due to rounding.
2. Percentages are calculated based upon the total number of pregnancies within each area-age category.
3. Percentages for the age categories "<15" and "40+" may be misleading due to the small number of pregnancies in this category.

*Source: Delaware Health and Social Services, Division of Public Health, Delaware Health Statistics Center*

**TABLE D-2. NUMBER AND PERCENT OF REPORTED PREGNANCIES BY RACE, HISPANIC ORIGIN, AND AGE OF WOMAN, DELAWARE, 2015**

Race- Hispanic Origin/ Age	Reported Pregnancies							
	Total		Live Births		Fetal Deaths		Induced Terminations	
	Number	Percent	Number	Percent	Number	Percent	Number	Percent
<b>All Races</b>	13579	100.0	11147	82.1	68	0.5	2364	17.4
<15	17	100.0	13	76.5	0	0.0	4	23.5
15-19	823	100.0	540	65.6	4	0.5	279	33.9
15-17	241	100.0	142	58.9	0	0.0	99	41.1
18-19	582	100.0	398	68.4	4	0.7	180	30.9
20-24	3060	100.0	2280	74.5	15	0.5	765	25.0
25-29	3967	100.0	3320	83.7	16	0.4	631	15.9
30-34	3623	100.0	3197	88.2	21	0.6	405	11.2
35-39	1720	100.0	1494	86.9	9	0.5	217	12.6
40+	369	100.0	303	82.1	3	0.8	63	17.1
Unknown	0	...	0	...	0	...	0	...
<b>White</b>	8423	100.0	7247	86.0	30	0.4	1146	13.6
<15	6	100.0	5	83.3	0	0.0	1	16.7
15-19	432	100.0	301	69.7	3	0.7	128	29.6
15-17	114	100.0	67	58.8	0	0.0	47	41.2
18-19	318	100.0	234	73.6	3	0.9	81	25.5
20-24	1713	100.0	1335	77.9	3	0.2	375	21.9
25-29	2482	100.0	2178	87.8	8	0.3	296	11.9
30-34	2426	100.0	2210	91.1	11	0.5	205	8.5
35-39	1122	100.0	1009	89.9	4	0.4	109	9.7
40+	242	100.0	209	86.4	1	0.4	32	13.2
Unknown	0	...	0	...	0	...	0	...
<b>Black</b>	4171	100.0	3069	73.6	32	0.8	1070	25.7
<15	10	100.0	7	70.0	0	0.0	3	30.0
15-19	344	100.0	215	62.5	1	0.3	128	37.2
15-17	112	100.0	70	62.5	0	0.0	42	37.5
18-19	232	100.0	145	62.5	1	0.4	86	37.1
20-24	1227	100.0	859	70.0	12	1.0	356	29.0
25-29	1197	100.0	888	74.2	6	0.5	303	25.3
30-34	849	100.0	674	79.4	7	0.8	168	19.8
35-39	449	100.0	356	79.3	4	0.9	89	19.8
40+	95	100.0	70	73.7	2	2.1	23	24.2
Unknown	0	...	0	...	0	...	0	...
<b>Other</b>	945	100.0	791	83.7	6	0.6	148	15.7
<15	1	100.0	1	100.0	0	0.0	0	0.0
15-19	42	100.0	19	45.2	0	0.0	23	54.8
15-17	15	100.0	5	33.3	0	0.0	10	66.7
18-19	27	100.0	14	51.9	0	0.0	13	48.1
20-24	117	100.0	83	70.9	0	0.0	34	29.1
25-29	276	100.0	242	87.7	2	0.7	32	11.6
30-34	337	100.0	302	89.6	3	0.9	32	9.5
35-39	143	100.0	123	86.0	1	0.7	19	13.3
40+	29	100.0	21	72.4	0	0.0	8	27.6
Unknown	0	...	0	...	0	...	0	...
<b>Hispanic*</b>	1851	100.0	1542	83.3	62	3.3	247	13.3
<15	6	100.0	5	83.3	0	0.0	1	16.7
15-19	163	100.0	130	79.8	2	1.2	31	19.0
15-17	47	100.0	33	70.2	0	0.0	14	29.8
18-19	116	100.0	97	83.6	2	1.7	17	14.7
20-24	482	100.0	393	81.5	14	2.9	75	15.6
25-29	522	100.0	448	85.8	15	2.9	59	11.3
30-34	404	100.0	338	83.7	21	5.2	45	11.1
35-39	208	100.0	171	82.2	7	3.4	30	14.4
40+	66	100.0	57	86.4	3	4.5	6	9.1
Unknown	0	...	0	...	0	...	0	...

Notes:

1. Percentages may not add to 100% due to rounding.
2. Percentages are calculated based upon the total number of pregnancies within each race-age category.
3. Percentages for the age categories "<15" and "40+" may be misleading due to the small number of pregnancies in this category.
4. \*Women of Hispanic origin may be of any race.

Source: Delaware Health and Social Services, Division of Public Health, Delaware Health Statistics Center

**TABLE D-3. NUMBER AND PERCENT OF REPORTED PREGNANCIES BY RACE, HISPANIC ORIGIN, AND EDUCATION OF WOMAN, DELAWARE, 2015**

Race- Hispanic Origin/ Education	Reported Pregnancies							
	Total		Live Births		Fetal Deaths		Induced Terminations	
	Number	Percent	Number	Percent	Number	Percent	Number	Percent
<b>All Races</b>	13579	100.0	11147	82.1	68	0.5	2364	17.4
<9	646	100.0	579	89.6	2	0.3	65	10.1
9 to 11	1475	100.0	1209	82.0	6	0.4	260	17.6
H.S. Grad	4096	100.0	2871	70.1	22	0.5	1203	29.4
1 to 3 College	3421	100.0	2899	84.7	22	0.6	500	14.6
4+ College	3740	100.0	3517	94.0	12	0.3	211	5.6
Unknown	201	100.0	72	35.8	4	2.0	125	62.2
<b>White</b>	8423	100.0	7247	86.0	30	0.4	1146	13.6
<9	577	100.0	531	92.0	1	0.2	45	7.8
9 to 11	844	100.0	693	82.1	2	0.2	149	17.7
H.S. Grad	2251	100.0	1667	74.1	12	0.5	572	25.4
1 to 3 College	2092	100.0	1857	88.8	8	0.4	227	10.9
4+ College	2562	100.0	2461	96.1	6	0.2	95	3.7
Unknown	97	100.0	38	39.2	1	1.0	58	59.8
<b>Black</b>	4171	100.0	3069	73.6	32	0.8	1070	25.7
<9	45	100.0	27	60.0	0	0.0	18	40.0
9 to 11	565	100.0	458	81.1	4	0.7	103	18.2
H.S. Grad	1695	100.0	1114	65.7	9	0.5	572	33.7
1 to 3 College	1183	100.0	926	78.3	13	1.1	244	20.6
4+ College	603	100.0	522	86.6	3	0.5	78	12.9
Unknown	80	100.0	22	27.5	3	3.8	55	68.8
<b>Other</b>	945	100.0	791	83.7	6	0.6	148	15.7
<9	23	100.0	20	87.0	1	4.3	2	8.7
9 to 11	56	100.0	48	85.7	0	0.0	8	14.3
H.S. Grad	148	100.0	88	59.5	1	0.7	59	39.9
1 to 3 College	137	100.0	107	78.1	1	0.7	29	21.2
4+ College	568	100.0	527	92.8	3	0.5	38	6.7
Unknown	13	100.0	1	7.7	0	0.0	12	92.3
<b>Hispanic*</b>	1795	100.0	1542	85.9	6	0.3	247	13.8
<9	427	100.0	387	90.6	1	0.2	39	9.1
9 to 11	384	100.0	315	82.0	1	0.3	68	17.7
H.S. Grad	547	100.0	437	79.9	3	0.5	107	19.6
1 to 3 College	289	100.0	265	91.7	1	0.3	23	8.0
4+ College	120	100.0	117	97.5	0	0.0	3	2.5
Unknown	28	100.0	21	75.0	0	0.0	7	25.0

Notes:

1. Percentages may not add to 100% due to rounding.
2. Percentages are calculated based upon the total number of pregnancies within each race-education category.
3. Percentages for the race category "Other" may be misleading due to the small number of pregnancies in this category.
4. \*Women of Hispanic origin may be of any race.

Source: Delaware Health and Social Services, Division of Public Health, Delaware Health Statistics Center

**TABLE D-4. NUMBER AND PERCENT OF REPORTED PREGNANCIES BY RACE AND MARITAL STATUS OF WOMAN BY COUNTY AND DELAWARE, 2015**

Area/Race/ Marital Status	Reported Pregnancies							
	Total		Live Births		Fetal Deaths		Induced Terminations	
	Number	Percent	Number	Percent	Number	Percent	Number	Percent
<b>Delaware</b>								
All Races	13579	100.0	11147	82.1	68	0.5	2364	17.4
Married	6283	100.0	5983	95.2	29	0.5	271	4.3
Single	7296	100.0	5164	70.8	39	0.5	2093	28.7
White	8423	100.0	7247	86.0	30	0.4	1146	13.6
Married	4535	100.0	4383	96.6	14	0.3	138	3.0
Single	3888	100.0	2864	73.7	16	0.4	1008	25.9
Black	4171	100.0	3069	73.6	32	0.8	1070	25.7
Married	982	100.0	896	91.2	9	0.9	77	7.8
Single	3189	100.0	2173	68.1	23	0.7	993	31.1
Other	945	100.0	791	83.7	6	0.6	148	15.7
Married	750	100.0	688	91.7	6	0.8	56	7.5
Single	195	100.0	103	52.8	0	0.0	92	47.2
<b>Kent</b>								
All Races	2681	100.0	2258	84.2	13	0.5	410	15.3
Married	1260	100.0	1220	96.8	4	0.3	36	2.9
Single	1421	100.0	1038	73.0	9	0.6	374	26.3
White	1683	100.0	1493	88.7	5	0.3	185	11.0
Married	989	100.0	966	97.7	2	0.2	21	2.1
Single	694	100.0	527	75.9	3	0.4	164	23.6
Black	881	100.0	672	76.3	8	0.9	201	22.8
Married	208	100.0	193	92.8	2	1.0	13	6.3
Single	673	100.0	479	71.2	6	0.9	188	27.9
Other	116	100.0	92	79.3	0	0.0	24	20.7
Married	62	100.0	60	96.8	0	0.0	2	3.2
Single	54	100.0	32	59.3	0	0.0	22	40.7
<b>New Castle</b>								
All Races	8237	100.0	6585	79.9	43	0.5	1609	19.5
Married	3904	100.0	3689	94.5	18	0.5	197	5.0
Single	4333	100.0	2896	66.8	25	0.6	1412	32.6
White	4645	100.0	3904	84.0	18	0.4	723	15.6
Married	2572	100.0	2474	96.2	9	0.3	89	3.5
Single	2073	100.0	1430	69.0	9	0.4	634	30.6
Black	2802	100.0	2004	71.5	20	0.7	778	27.8
Married	670	100.0	609	90.9	4	0.6	57	8.5
Single	2132	100.0	1395	65.4	16	0.8	721	33.8
Other	757	100.0	644	85.1	5	0.7	108	14.3
Married	649	100.0	593	91.4	5	0.8	51	7.9
Single	108	100.0	51	47.2	0	0.0	57	52.8
<b>Sussex</b>								
All Races	2661	100.0	2304	86.6	12	0.5	345	13.0
Married	1119	100.0	1074	96.0	7	0.6	38	3.4
Single	1542	100.0	1230	79.8	5	0.3	307	19.9
White	2095	100.0	1850	88.3	7	0.3	238	11.4
Married	974	100.0	943	96.8	3	0.3	28	2.9
Single	1121	100.0	907	80.9	4	0.4	210	18.7
Black	488	100.0	393	80.5	4	0.8	91	18.6
Married	104	100.0	94	90.4	3	2.9	7	6.7
Single	384	100.0	299	77.9	1	0.3	84	21.9
Other	72	100.0	55	76.4	1	1.4	16	22.2
Married	39	100.0	35	89.7	1	2.6	3	7.7
Single	33	100.0	20	60.6	0	0.0	13	39.4

Notes:

1. Percentages may not add to 100% due to rounding.
2. Percentages are calculated based upon the total number of pregnancies within each race-marital status category.
3. Percentages for the race category "Other" may be misleading due to the small number of pregnancies in this category.

Source: Delaware Health and Social Services, Division of Public Health, Delaware Health Statistics Center

**TABLE D-5. NUMBER OF REPORTED PREGNANCIES BY AGE OF WOMAN, COUNTY, AND DELAWARE, 2005-2015**

**ALL RACES**

Area/ Age	2005	2006	2007	2008	2009	2010	2011	2012	2013	2014	2015
<b>Delaware</b>	14699	15498	15691	15400	14971	14906	14437	14267	13421	13461	13579
<15	37	54	37	47	33	34	32	28	18	18	17
15-19	1786	1879	1900	1846	1574	1574	1378	1172	1067	926	823
15-17	598	626	640	607	488	504	427	348	304	273	241
18-19	1188	1253	1260	1239	1086	1070	951	824	763	653	582
20-24	4029	4275	4337	4141	4028	3908	3702	3703	3290	3156	3060
25-29	3802	4100	4172	4327	4172	4187	4118	3990	3797	3924	3967
30-34	3110	3169	3236	3035	3134	3211	3279	3427	3424	3508	3623
35-39	1579	1662	1616	1647	1558	1581	1536	1564	1451	1525	1720
40+	356	359	393	357	472	411	392	383	374	404	369
<b>Kent</b>	2793	2822	2877	2925	2901	2815	2689	2752	2672	2683	2681
<15	7	5	5	5	5	4	3	2	2	3	3
15-19	354	347	378	356	291	304	267	235	201	169	149
15-17	101	92	108	111	86	98	73	60	53	44	43
18-19	253	255	270	245	205	206	194	175	148	125	106
20-24	933	900	915	899	971	852	773	808	778	754	731
25-29	746	765	837	823	825	827	831	783	785	844	847
30-34	478	511	474	511	528	529	551	597	611	631	612
35-39	219	240	211	277	203	227	217	262	228	231	288
40+	56	54	57	54	78	72	47	65	67	51	51
<b>New Castle</b>	9288	9812	9773	9382	9233	9360	9143	8781	8225	8153	8237
<15	24	40	21	33	21	24	21	22	14	11	8
15-19	1043	1136	1114	1061	945	971	846	682	626	540	476
15-17	378	423	407	362	290	314	272	215	187	172	140
18-19	665	713	707	699	655	657	574	467	439	368	336
20-24	2273	2464	2405	2251	2209	2254	2147	2082	1861	1729	1681
25-29	2398	2557	2535	2639	2543	2573	2527	2445	2251	2285	2316
30-34	2161	2178	2259	2058	2103	2150	2244	2275	2236	2273	2375
35-39	1155	1183	1150	1092	1090	1107	1075	1033	987	1026	1114
40+	234	254	289	248	322	281	283	242	250	289	267
<b>Sussex</b>	2618	2864	3041	3093	2837	2731	2605	2734	2524	2625	2661
<15	6	9	11	9	7	6	8	4	2	4	6
15-19	389	396	408	429	338	299	265	255	240	217	198
15-17	119	111	125	134	112	92	82	73	64	57	58
18-19	270	285	283	295	226	207	183	182	176	160	140
20-24	823	911	1017	991	848	802	782	813	651	673	648
25-29	658	778	800	865	804	787	760	762	761	795	804
30-34	471	480	503	466	503	532	484	555	577	604	636
35-39	205	239	255	278	265	247	244	269	236	268	318
40+	66	51	47	55	72	58	62	76	57	64	51

*Note:*  
Reported pregnancies include live births, fetal deaths, and induced terminations of pregnancy.

*Source:* Delaware Health and Social Services, Division of Public Health, Delaware Health Statistics Center



**TABLE D-6. NUMBER OF REPORTED PREGNANCIES BY AGE OF WOMAN, COUNTY, AND DELAWARE, 2005-2015**

**WHITE**

Area/ Age	2005	2006	2007	2008	2009	2010	2011	2012	2013	2014	2015
<b>Delaware</b>	9774	10080	9986	9866	9342	9244	9092	8899	8299	8391	8423
<15	18	20	13	20	15	9	8	11	7	4	6
15-19	1011	1041	1020	1018	829	808	740	630	524	478	432
15-17	328	322	312	326	250	261	230	168	155	129	114
18-19	683	719	708	692	579	547	510	462	369	349	318
20-24	2532	2572	2589	2458	2359	2222	2105	2092	1834	1790	1713
25-29	2557	2773	2741	2816	2688	2712	2689	2531	2413	2523	2482
30-34	2243	2261	2237	2153	2118	2170	2279	2358	2320	2349	2426
35-39	1152	1170	1129	1169	1035	1047	1013	1031	956	989	1122
40+	261	243	257	232	298	276	258	246	245	258	242
<b>Kent</b>	1877	1879	1883	1887	1842	1779	1750	1775	1676	1711	1683
<15	2	3	2	2	4	1	1	2	1	1	0
15-19	200	187	224	194	148	155	150	113	90	90	76
15-17	57	43	55	53	41	50	42	28	23	19	19
18-19	143	144	169	141	107	105	108	85	67	71	57
20-24	604	565	548	540	593	509	450	476	450	440	413
25-29	513	544	587	556	555	566	593	532	526	580	546
30-34	356	366	329	367	353	357	399	432	420	432	431
35-39	164	175	153	192	142	150	130	177	146	137	184
40+	38	39	40	36	47	41	27	43	43	31	33
<b>New Castle</b>	5890	6070	5947	5543	5330	5363	5337	5001	4702	4673	4645
<15	12	13	7	12	9	7	4	6	5	2	2
15-19	549	595	570	514	457	439	403	328	273	234	215
15-17	187	208	197	182	130	148	135	92	90	72	55
18-19	362	387	373	332	327	291	268	236	183	162	160
20-24	1350	1360	1347	1189	1145	1154	1109	1010	931	892	830
25-29	1513	1641	1555	1564	1504	1517	1488	1390	1288	1313	1292
30-34	1481	1494	1509	1380	1342	1357	1478	1477	1415	1424	1465
35-39	815	802	778	733	681	700	673	638	640	633	677
40+	170	165	181	151	192	189	182	152	150	175	164
<b>Sussex</b>	2007	2131	2156	2436	2170	2102	2005	2123	1921	2007	2095
<15	4	4	4	6	2	1	3	3	1	1	4
15-19	262	259	226	310	224	214	187	189	161	154	141
15-17	84	71	60	91	79	63	53	48	42	38	40
18-19	178	188	166	219	145	151	134	141	119	116	101
20-24	578	647	694	729	621	559	546	606	453	458	470
25-29	531	588	599	696	629	629	608	609	599	630	644
30-34	406	401	399	406	423	456	402	449	485	493	530
35-39	173	193	198	244	212	197	210	216	170	219	261
40+	53	39	36	45	59	46	49	51	52	52	45

Note: Reported pregnancies include live births, fetal deaths, and induced terminations of pregnancy.

Source: Delaware Health and Social Services, Division of Public Health, Delaware Health Statistics Center

**TABLE D-7. NUMBER OF REPORTED PREGNANCIES BY AGE OF WOMAN, COUNTY, AND DELAWARE, 2005-2015**

**BLACK**

Area/ Age	2005	2006	2007	2008	2009	2010	2011	2012	2013	2014	2015
<b>Delaware</b>	4187	4522	4738	4727	4802	4858	4622	4550	4317	4106	4171
<15	18	32	22	27	18	24	24	17	9	12	10
15-19	741	786	805	790	718	734	616	512	509	411	344
15-17	262	286	309	272	232	234	193	175	140	135	112
18-19	479	500	496	518	486	500	423	337	369	276	232
20-24	1372	1525	1564	1542	1532	1580	1515	1508	1344	1231	1227
25-29	1020	1044	1132	1229	1237	1213	1182	1199	1130	1111	1197
30-34	632	677	722	670	758	775	769	818	835	837	849
35-39	325	371	385	361	409	417	404	392	387	397	449
40+	79	87	108	108	130	115	112	104	103	107	95
<b>Kent</b>	785	840	913	947	947	932	863	873	884	848	881
<15	5	2	3	3	1	3	2	0	0	1	3
15-19	135	154	145	152	133	145	112	119	99	68	63
15-17	42	48	51	54	42	47	30	32	26	20	22
18-19	93	106	94	98	91	98	82	87	73	48	41
20-24	299	313	345	333	345	321	302	305	303	285	295
25-29	197	186	229	244	246	222	220	224	231	237	264
30-34	93	119	123	130	143	145	130	140	159	165	151
35-39	42	54	52	69	55	65	80	72	71	74	89
40+	14	12	16	16	24	31	17	13	21	18	16
<b>New Castle</b>	2869	3160	3219	3206	3267	3362	3212	3138	2902	2721	2802
<15	12	26	14	21	12	16	17	16	8	8	5
15-19	486	519	524	525	474	507	430	333	336	283	235
15-17	186	203	206	177	158	159	135	119	95	97	75
18-19	300	316	318	348	316	348	295	214	241	186	160
20-24	850	1019	991	971	980	1029	991	1008	858	756	771
25-29	717	733	774	846	845	854	827	841	758	733	794
30-34	491	510	539	490	552	569	569	588	599	579	609
35-39	259	286	295	270	310	312	295	282	263	281	314
40+	54	67	82	83	94	75	83	70	80	81	74
<b>Sussex</b>	533	522	606	574	588	564	547	539	531	537	488
<15	1	4	5	3	5	5	5	1	1	3	2
15-19	120	113	136	113	111	82	74	60	74	60	46
15-17	34	35	52	41	32	28	28	24	19	18	15
18-19	86	78	84	72	79	54	46	36	55	42	31
20-24	223	193	228	238	207	230	222	195	183	190	161
25-29	106	125	129	139	146	137	135	134	141	141	139
30-34	48	48	60	50	63	61	70	90	77	93	89
35-39	24	31	38	22	44	40	29	38	53	42	46
40+	11	8	10	9	12	9	12	21	2	8	5

Note: Reported pregnancies include live births, fetal deaths, and induced terminations of pregnancy.

Source: Delaware Health and Social Services, Division of Public Health, Delaware Health Statistics Center

**TABLE D-8. FIVE-YEAR AVERAGE RATE OF REPORTED PREGNANCIES BY AGE OF WOMAN, COUNTY, AND DELAWARE 2003-2015**

**ALL RACES**

Area/ Age	2003- 2007	2004- 2008	2005- 2009	2006- 2010	2007- 2011	2008- 2012	2009- 2013	2010- 2014	2011- 2015
<b>Delaware</b>	85.5	86.2	86.4	86.6	85.5	84.1	82.1	80.4	79.0
<15	1.5	1.5	1.5	1.5	1.3	1.3	1.0	0.9	0.8
15-19	65.7	64.3	61.5	59.6	56.2	51.5	46.7	42.7	37.7
15-17	37.0	35.9	33.6	32.5	30.4	27.4	24.3	21.9	18.9
18-19	110.0	107.9	104.0	100.2	94.0	86.3	78.9	72.6	65.1
20-24	143.9	146.1	146.9	146.3	140.6	134.0	126.4	119.1	112.4
25-29	140.2	139.1	137.8	137.2	137.8	138.8	137.3	136.9	136.0
30-34	117.9	118.8	119.4	120.2	117.3	113.8	112.2	111.5	111.6
35-39	51.9	53.5	54.2	54.8	55.3	56.6	56.5	56.8	57.9
40+	5.4	5.5	5.8	5.9	6.1	6.1	6.3	6.2	6.2
<b>Kent</b>	85.4	85.9	86.9	86.0	84.5	83.3	81.4	79.8	78.5
<15	1.2	1.2	1.0	0.9	0.8	0.7	0.6	0.5	0.5
15-19	64.1	63.3	60.9	58.7	56.0	51.1	45.9	41.8	36.3
15-17	31.3	31.4	29.7	29.3	28.2	25.4	22.1	19.6	16.3
18-19	113.1	110.4	106.3	101.4	96.3	88.3	80.5	74.1	65.9
20-24	166.0	161.7	162.2	156.8	149.6	144.2	139.6	132.6	129.1
25-29	144.1	143.1	142.6	139.5	139.2	136.8	135.1	135.2	135.3
30-34	98.6	100.6	103.3	103.9	101.1	100.5	99.5	99.1	98.3
35-39	41.0	44.1	44.2	44.4	43.7	46.1	44.6	45.5	47.4
40+	4.7	4.6	5.0	5.2	5.1	5.3	5.5	5.2	4.9
<b>New Castle</b>	84.2	84.3	84.1	84.5	83.8	82.6	81.0	79.4	77.7
<15	1.6	1.6	1.6	1.6	1.4	1.4	1.2	1.1	0.9
15-19	63.8	61.0	57.8	56.5	53.3	49.0	45.0	41.1	36.0
15-17	38.0	36.0	33.3	32.2	29.8	26.8	24.0	22.1	19.0
18-19	104.5	100.6	96.0	93.2	87.7	81.0	74.8	68.2	60.5
20-24	127.3	130.7	133.1	134.9	130.2	123.7	116.9	109.6	101.9
25-29	131.8	129.2	127.9	128.1	130.8	135.2	135.9	136.5	138.0
30-34	125.5	126.6	126.1	126.2	122.8	117.6	115.0	114.3	113.1
35-39	57.4	58.1	58.4	58.7	59.6	60.4	61.0	61.0	62.6
40+	6.1	6.2	6.4	6.7	6.9	6.7	6.8	6.8	6.7
<b>Sussex</b>	90.5	93.9	94.5	94.8	92.9	90.6	86.6	84.7	83.6
<15	1.6	1.7	1.7	1.7	1.6	1.3	1.0	0.9	0.9
15-19	73.8	76.7	75.1	71.7	66.7	60.8	53.5	49.1	45.2
15-17	39.7	40.7	38.7	36.8	34.9	31.8	27.3	23.8	21.6
18-19	125.1	129.9	128.6	123.5	114.2	103.0	91.4	86.1	79.9
20-24	182.5	183.5	176.3	171.5	164.3	156.5	143.6	136.1	130.0
25-29	173.7	179.6	175.9	173.8	164.1	154.2	144.5	140.0	136.0
30-34	108.4	107.8	111.0	114.9	114.2	114.5	116.1	115.5	113.9
35-39	41.6	45.6	48.4	50.5	51.7	53.5	52.7	53.7	57.7
40+	4.1	4.1	4.4	4.3	4.5	5.0	5.2	5.1	5.2

*Notes:*

1. Reported pregnancies include live births, fetal deaths, and induced terminations of pregnancy.
2. For Delaware and counties, pregnancy rates represent the number of reported pregnancies to women of all ages per 1,000 women 15-44 years of age in the population.
3. For each age group, the denominator for the pregnancy rate is the total number women in the county/state within that age category except the "<15" and "40+" age categories which are based on women ages 10-14 and 40-49, respectively.

*Source: Delaware Health and Social Services, Division of Public Health, Delaware Health Statistics Center*

**TABLE D-9. FIVE-YEAR AVERAGE RATE OF REPORTED PREGNANCIES BY AGE OF WOMAN, COUNTY, AND DELAWARE 2003-2015**

**WHITE**

Area/ Age	2003- 2007	2004- 2008	2005- 2009	2006- 2010	2007- 2011	2008- 2012	2009- 2013	2010- 2014	2011- 2015
<b>Delaware</b>	79.7	81.0	81.1	80.9	80.1	79.0	77.1	76.0	75.2
<15	0.9	0.9	0.9	0.9	0.7	0.7	0.6	0.4	0.4
15-19	53.4	52.9	50.7	48.7	45.9	42.4	37.9	34.8	31.3
15-17	28.4	28.0	26.3	25.4	24.1	22.0	19.4	17.6	15.1
18-19	91.8	90.9	87.6	83.5	77.8	71.7	64.2	59.3	54.2
20-24	126.2	130.1	131.3	129.5	124.3	118.1	110.8	104.3	98.8
25-29	134.9	134.2	132.7	132.0	132.9	134.4	133.5	134.1	133.5
30-34	122.4	123.9	123.7	123.9	120.7	117.1	114.4	113.7	114.0
35-39	52.7	54.8	54.9	54.8	55.1	56.3	55.8	56.2	57.5
40+	5.1	5.1	5.3	5.4	5.5	5.6	5.8	5.8	5.8
<b>Kent</b>	82.9	83.7	84.7	83.5	82.5	81.8	80.1	78.9	78.0
<15	0.8	0.8	0.7	0.7	0.6	0.6	0.5	0.3	0.3
15-19	52.2	51.5	49.4	47.2	45.7	40.3	35.4	32.6	28.6
15-17	24.1	23.2	21.8	21.3	21.4	19.2	16.8	15.0	12.2
18-19	93.9	92.9	89.4	84.7	80.8	70.8	61.9	57.7	52.2
20-24	159.9	151.4	148.3	140.1	132.3	128.1	123.8	117.1	113.2
25-29	162.7	165.2	166.1	163.3	159.9	151.5	145.1	142.6	138.0
30-34	104.9	108.4	111.4	112.6	114.1	118.6	119.0	119.7	119.1
35-39	41.9	44.7	45.1	44.6	43.0	45.7	44.3	45.0	48.1
40+	4.5	4.4	4.6	4.7	4.4	4.6	4.8	4.5	4.5
<b>New Castle</b>	76.8	76.9	76.5	76.1	75.3	73.9	72.6	71.6	70.6
<15	0.9	1.0	1.0	0.9	0.7	0.7	0.6	0.4	0.3
15-19	50.5	48.3	45.9	44.0	41.0	37.5	34.0	30.8	27.3
15-17	28.2	27.3	25.4	24.6	22.9	20.4	18.2	16.9	14.3
18-19	85.5	81.2	77.8	73.5	67.6	62.0	56.5	50.4	45.7
20-24	104.4	109.3	112.9	113.4	109.5	101.9	95.9	90.3	83.9
25-29	118.3	114.1	112.1	111.6	114.4	119.8	122.9	125.6	127.3
30-34	129.5	130.4	128.0	126.2	120.6	113.4	108.9	108.0	108.9
35-39	59.0	60.0	59.4	58.9	59.3	59.5	59.9	59.7	59.0
40+	5.7	5.8	5.8	6.1	6.3	6.3	6.4	6.5	6.5
<b>Sussex</b>	86.3	91.8	92.5	93.3	92.4	92.3	88.0	86.5	86.3
<15	1.0	1.0	1.1	0.9	0.9	0.8	0.5	0.5	0.6
15-19	63.3	68.2	66.5	64.4	60.9	59.3	51.8	48.7	45.1
15-17	33.3	34.8	33.7	31.9	30.4	29.8	25.7	22.2	20.3
18-19	108.1	117.0	114.5	112.4	106.2	102.0	89.4	87.0	81.1
20-24	170.8	175.1	168.0	163.1	156.4	152.4	139.2	130.9	126.9
25-29	178.8	190.2	185.8	183.4	174.3	165.1	153.4	148.8	144.6
30-34	114.5	116.7	121.2	126.7	127.2	129.1	130.8	129.6	127.2
35-39	42.1	47.1	49.7	51.3	53.5	56.2	53.9	55.9	61.4
40+	3.9	3.9	4.2	4.1	4.4	4.7	5.0	5.0	5.1

*Notes:*

1. Reported pregnancies include live births, fetal deaths, and induced terminations of pregnancy.
2. For Delaware and counties, pregnancy rates represent the number of reported pregnancies to women of all ages per 1,000 women 15-44 years of age in the population.
3. For each age group, the denominator for the pregnancy rate is the total number women in the county/state within that age category except the "<15" and "40+" age categories which are based on women ages 10-14 and 40-49, respectively.
4. Comparisons using rates for the "<15" and "40+" age categories may be misleading due to the small number of events in these categories.

*Source: Delaware Health and Social Services, Division of Public Health, Delaware Health Statistics Center*

**TABLE D-10. FIVE-YEAR AVERAGE RATE OF REPORTED PREGNANCIES BY AGE OF WOMAN, COUNTY, AND DELAWARE 2003-2015**

**BLACK**

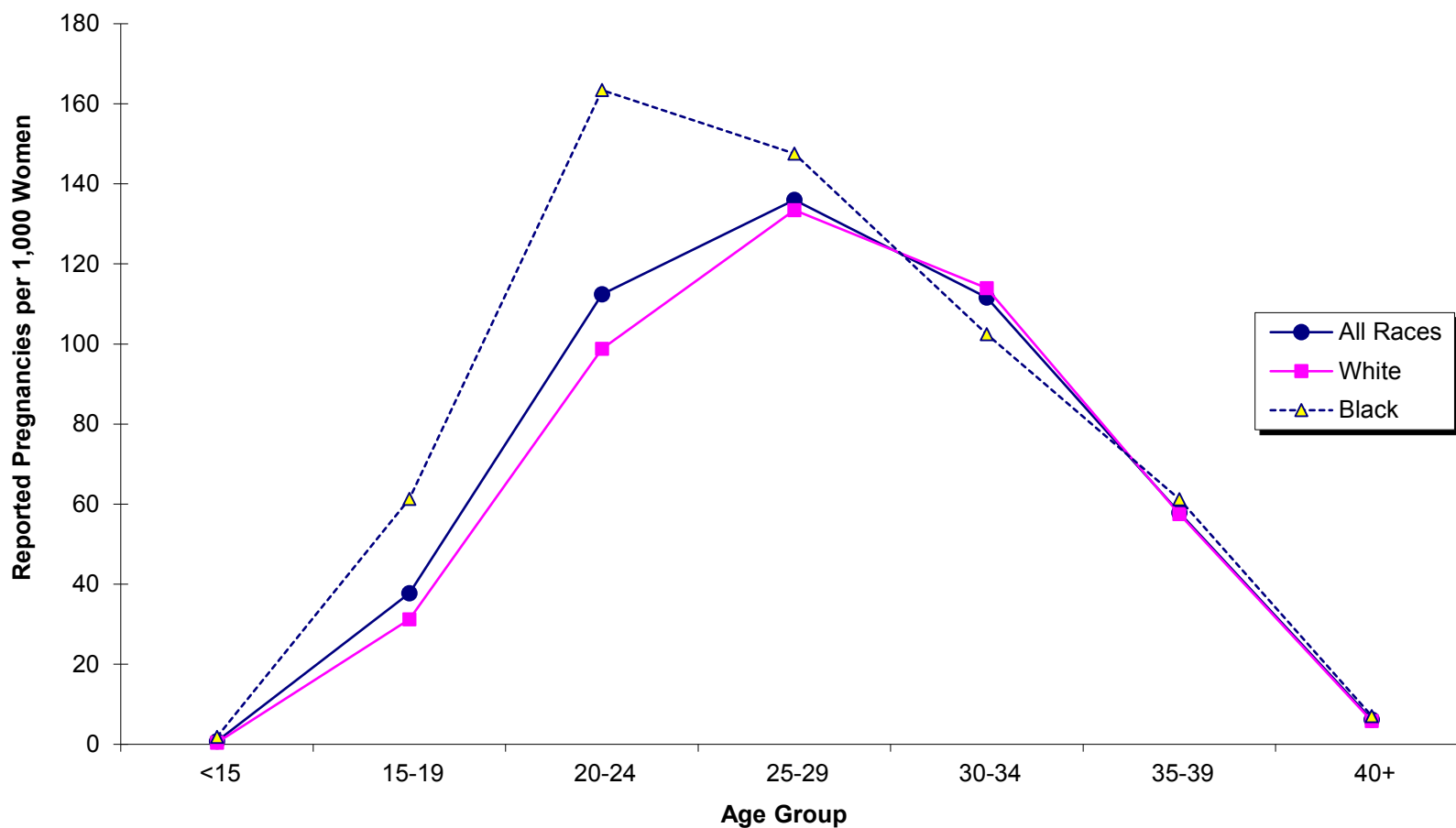
Area/ Age	2003- 2007	2004- 2008	2005- 2009	2006- 2010	2007- 2011	2008- 2012	2009- 2013	2010- 2014	2010- 2015
<b>Delaware</b>	104.1	104.3	105.1	106.7	106.1	104.5	102.2	98.7	95.2
<15	3.3	3.2	3.1	3.3	3.0	2.9	2.4	2.2	1.9
15-19	103.9	101.1	96.6	94.9	90.4	83.7	77.6	70.8	61.3
15-17	63.7	60.9	56.5	55.1	51.5	46.7	41.7	37.9	32.6
18-19	167.3	164.0	158.4	154.6	147.2	136.7	128.5	118.0	103.4
20-24	202.9	201.9	201.6	204.6	199.2	192.6	184.1	173.9	163.4
25-29	153.4	152.2	151.6	151.1	152.6	154.4	152.1	148.8	147.5
30-34	106.5	107.4	110.6	113.2	110.4	107.1	106.2	104.2	102.5
35-39	48.5	50.0	52.7	56.0	58.4	60.0	61.7	61.2	61.2
40+	6.0	6.4	6.9	7.3	7.6	7.5	7.5	7.2	7.1
<b>Kent</b>	99.2	99.3	101.2	101.5	99.3	96.4	93.6	90.3	87.8
<15	2.6	2.5	2.0	1.6	1.6	1.2	0.8	0.8	0.7
15-19	101.6	100.5	96.5	96.0	89.4	85.2	78.0	69.5	58.0
15-17	55.0	56.7	53.6	53.9	49.3	44.7	38.0	33.0	27.1
18-19	172.1	165.2	158.9	157.0	147.6	143.8	137.4	124.1	105.2
20-24	190.8	197.8	210.2	214.6	209.6	199.6	193.4	185.4	182.6
25-29	116.9	112.1	111.2	107.6	112.5	118.5	124.3	129.5	141.1
30-34	88.6	89.8	94.6	95.6	84.7	75.8	71.9	69.7	67.5
35-39	41.2	45.2	46.4	49.5	52.7	54.7	52.7	52.1	50.7
40+	5.3	5.4	6.4	7.5	7.7	7.5	7.9	7.5	6.4
<b>New Castle</b>	106.8	106.6	106.8	109.0	108.6	107.7	105.5	101.7	97.8
<15	3.5	3.3	3.3	3.5	3.2	3.2	2.7	2.5	2.1
15-19	104.6	100.3	94.7	93.6	89.7	83.6	77.7	71.7	62.0
15-17	66.8	61.8	56.8	55.0	51.2	46.8	42.6	39.1	33.8
18-19	165.6	162.5	154.6	152.0	146.2	136.0	127.1	117.8	103.0
20-24	207.7	202.7	199.3	203.0	195.8	189.9	181.0	168.6	156.2
25-29	168.7	170.2	171.0	172.2	172.8	173.1	167.0	160.2	154.5
30-34	115.4	117.5	120.9	124.5	124.7	123.7	124.6	122.7	121.0
35-39	52.6	53.7	56.2	59.0	61.3	62.8	64.7	64.5	65.3
40+	6.3	6.9	7.3	7.6	7.9	7.6	7.6	7.4	7.4
<b>Sussex</b>	97.9	100.1	101.7	102.7	103.5	101.0	99.4	97.3	94.3
<15	3.4	3.8	3.5	4.4	4.6	3.8	3.4	3.0	2.4
15-19	103.5	105.2	106.1	100.2	94.9	82.3	76.5	68.3	62.8
15-17	60.7	62.2	58.6	57.1	56.1	48.8	42.9	39.0	35.2
18-19	168.2	168.7	175.2	163.5	151.7	130.0	123.3	109.7	102.6
20-24	200.9	204.4	199.3	197.6	200.1	195.2	185.2	183.0	171.9
25-29	146.5	144.9	142.0	142.6	138.6	133.8	131.0	127.3	124.9
30-34	78.7	74.6	77.2	79.4	81.5	84.7	86.5	88.1	88.8
35-39	33.6	34.2	40.1	46.5	48.5	50.3	59.4	58.1	58.4
40+	4.9	5.0	5.2	5.0	5.6	6.9	6.4	6.1	5.9

*Notes:*

1. Reported pregnancies include live births, fetal deaths, and induced terminations of pregnancy.
2. For Delaware and counties, pregnancy rates represent the number of reported pregnancies to women of all ages per 1,000 women 15-44 years of age in the population.
3. For each age group, the denominator for the pregnancy rate is the total number women in the county/state within that age category except the "<15" and "40+" age categories which are based on women ages 10-14 and 40-49, respectively.
4. Comparisons using rates for the "<15" and "40+" age categories may be misleading due to the small number of events in these categories.

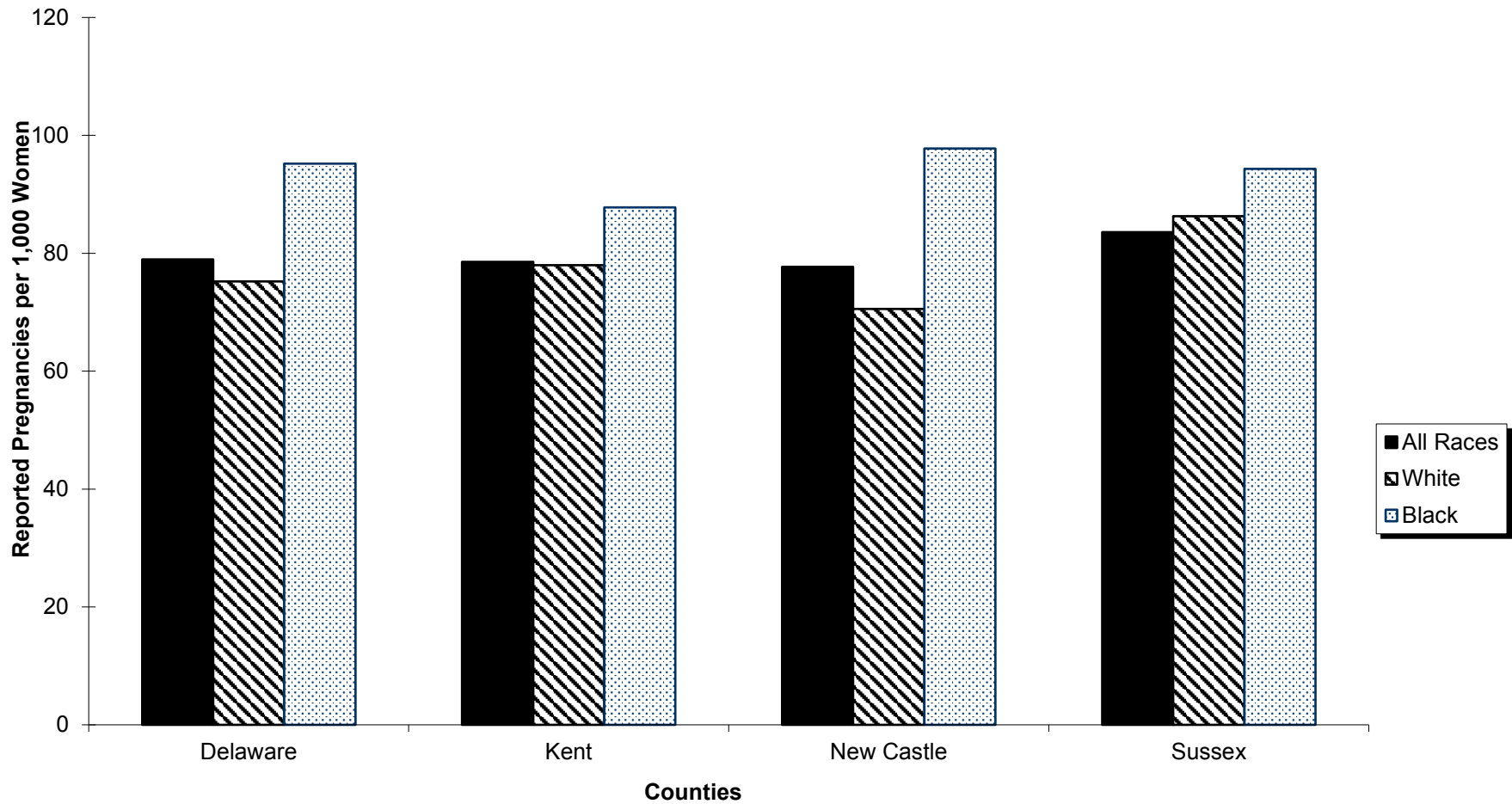
*Source: Delaware Health and Social Services, Division of Public Health, Delaware Health Statistics Center*

**Figure D-1. Five-year Average Rate of Reported Pregnancies by Age and Race, Delaware, 2011-2015**



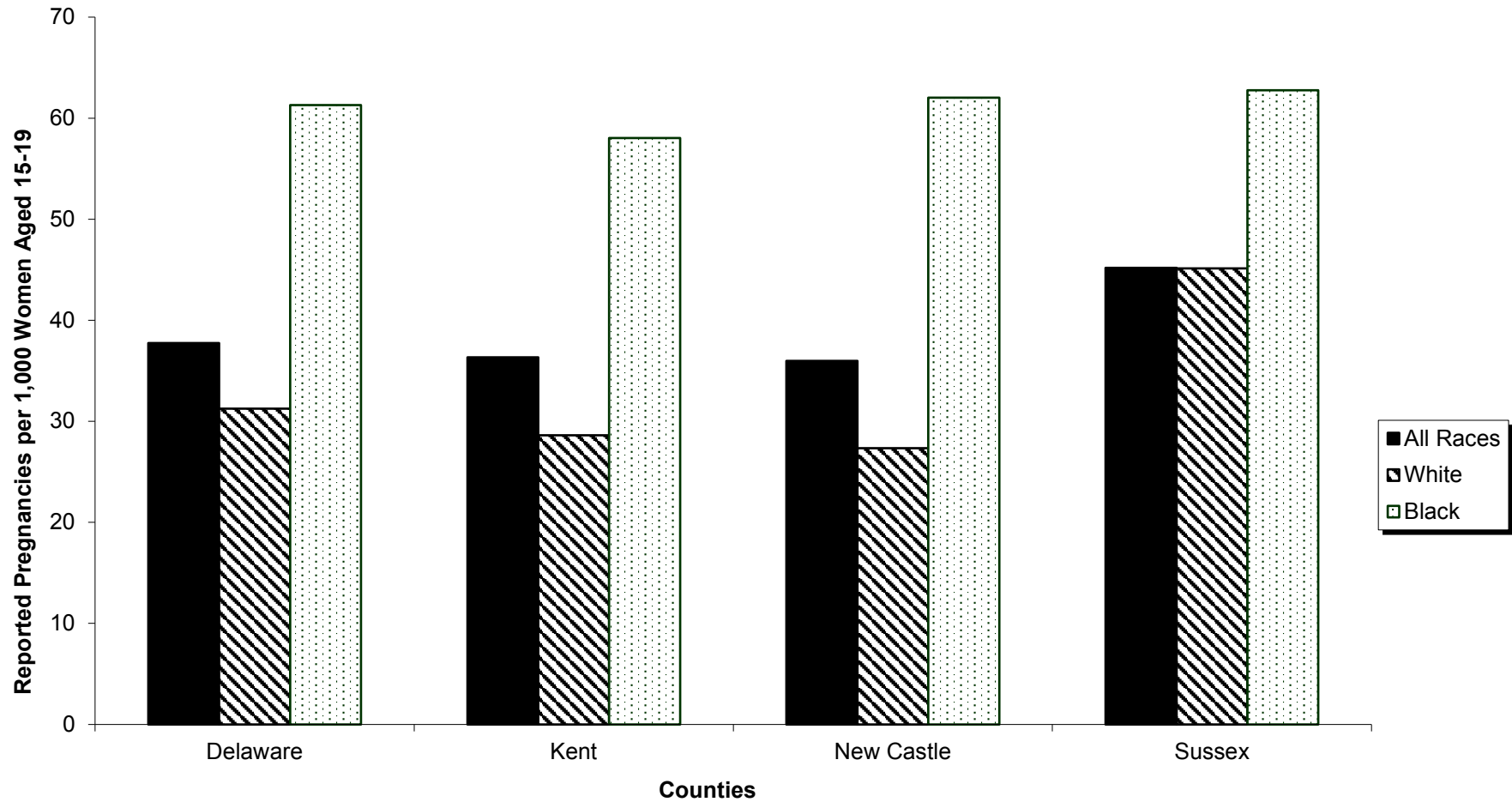
Source: Delaware Health and Social Services, Division of Public Health, Delaware Health Statistics Center

**Figure D-2. Five-year Average Rate of Reported Pregnancies by County and Race, Delaware, 2011-2015**



Source: Delaware Health and Social Services, Division of Public Health, Delaware Health Statistics Center

**Figure D-3. Five-year Average Teenage (15-19) Pregnancy Rate by County and Race, Delaware, 2011-2015**

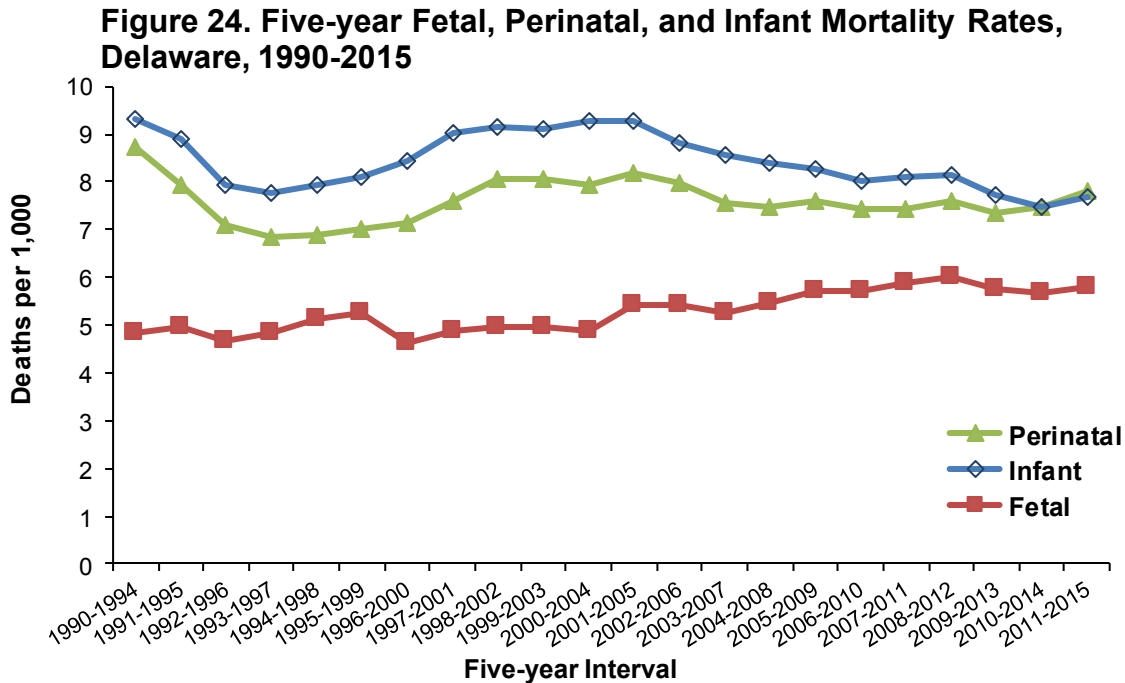


Source: Delaware Health and Social Services, Division of Public Health, Delaware Health Statistics Center



## FETAL AND PERINATAL DEATHS

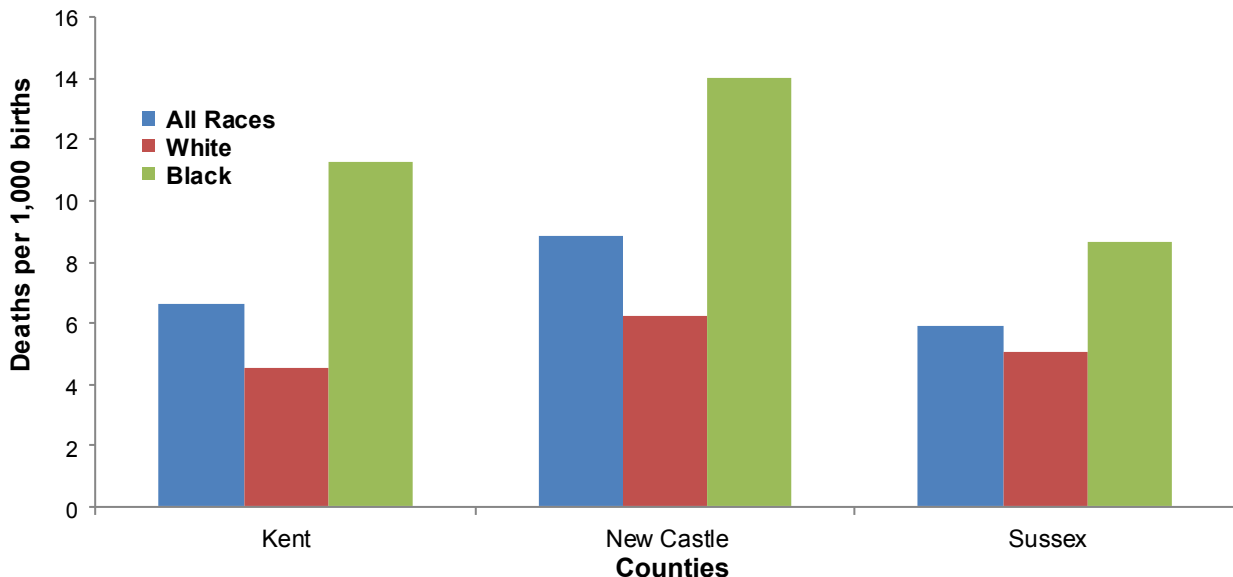
Perinatal mortality refers to deaths occurring in the period around delivery, and includes late fetal deaths (>28 weeks gestation) and early infant deaths (<7 days of age). Perinatal mortality trends paralleled those of infant mortality, decreasing from 1990-1994 to their lowest level in 1993-1997, and then increasing through 2001-2005, after which they began a gradual decrease and closed the gap between the rates through 2009-2013. The infant and perinatal mortality rates became nearly equal in the 2011-2015 time period (7.7 infant deaths per 1,000 live births and 7.8 perinatal deaths per 1,000 live births).



Source: Delaware Health and Social Services, Division of Public Health, Delaware Health Statistics Center

Like infant mortality rates, black perinatal mortality rates were substantially higher than white perinatal mortality rates, regardless of county. In New Castle County, the black perinatal mortality rate of 14.0 perinatal deaths per 1,000 live births was more than double the white perinatal mortality rate of 6.3 perinatal deaths per 1,000 live births.

**Figure 25. Five-year Average Perinatal Mortality Rates by Race and County, Delaware, 2011-2015**

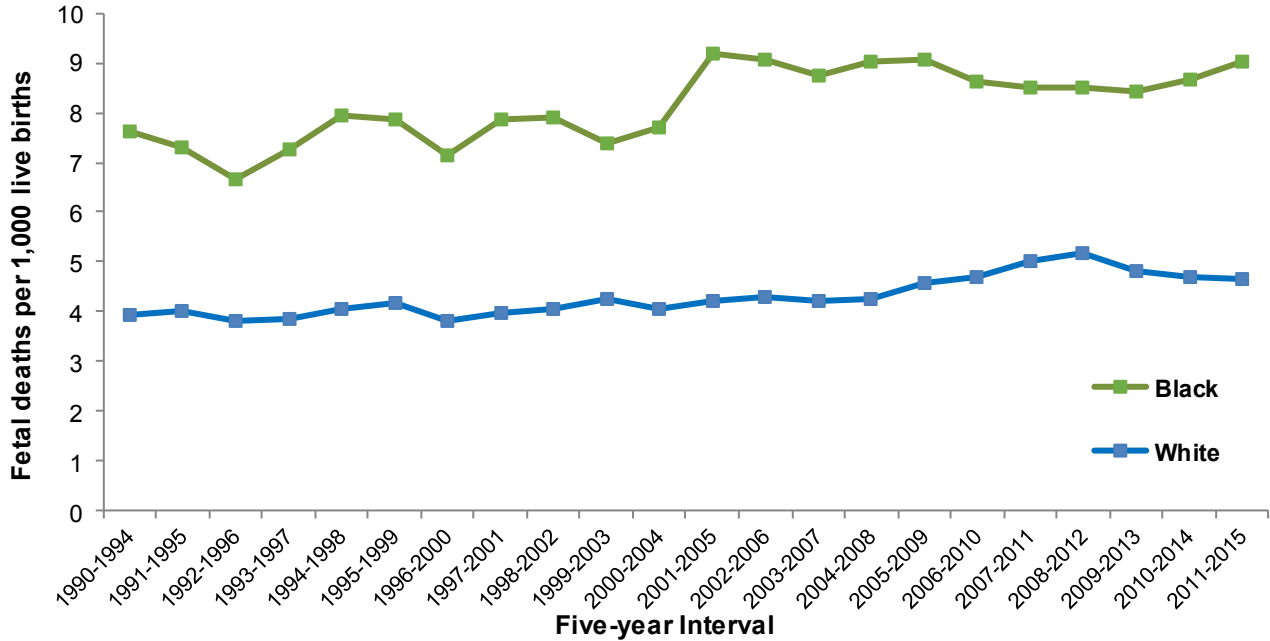


Source: Delaware Health and Social Services, Division of Public Health, Delaware Health Statistics Center

## FETAL AND PERINATAL DEATHS

In 2015, there were 68 reported fetal deaths in Delaware. In 2011-2015, the fetal mortality rate was 5.8 fetal deaths per 1,000 live births. Fetal mortality rates for black women have been consistently higher than the rates for white women, and in 2011-2015 they were 48 percent higher than the rate of white women (9.0 versus 4.7).

**Figure 26. Five-year Average Fetal Mortality Rates by Mother's Race, Delaware, 1990-2015**



Source: Delaware Health and Social Services, Division of Public Health, Delaware Health Statistics Center

**TABLE D-11. NUMBER OF FETAL DEATHS BY RACE, HISPANIC ORIGIN, AGE OF WOMAN, COUNTY, AND DELAWARE, 2015**

Area/ Age	Race-Hispanic Origin				
	All Races	White	Black	Other	Hispanic*
<b>Delaware</b>	68	30	32	6	6
<20	4	3	1	0	2
20-24	15	3	12	0	1
25-34	37	19	13	5	1
35+	12	5	6	1	2
Unknown	0	0	0	0	0
<b>Kent</b>	13	5	8	0	2
<20	1	1	0	0	1
20-24	3	0	3	0	0
25-34	5	2	3	0	0
35+	4	2	2	0	1
Unknown	0	0	0	0	0
<b>New Castle</b>	43	18	20	5	3
<20	3	2	1	0	1
20-24	9	2	7	0	1
25-34	24	12	8	4	1
35+	7	2	4	1	0
Unknown	0	0	0	0	0
<b>Sussex</b>	12	7	4	1	1
<20	0	0	0	0	0
20-24	3	1	2	0	0
25-34	8	5	2	1	0
35+	1	1	0	0	1
Unknown	0	0	0	0	0

*Notes:*

Fetal deaths are reportable events if the fetus weighs at least 350 grams, or if weight is unknown, has reached at least 20 weeks of gestation. For more details, see "Basic Definitions".

\*People of Hispanic origin may be of any race.

Source: Delaware Health and Social Services, Division of Public Health, Delaware Health Statistics Center

**TABLE D-12. NUMBER FETAL DEATHS BY RACE, HISPANIC ORIGIN, AND EDUCATION OF WOMAN, DELAWARE, 2015**

Education	Race-Hispanic Origin				
	All Races	White	Black	Other	Hispanic*
<b>Total</b>	68	30	32	6	6
<9	2	1	0	1	1
9 to 11	6	2	4	0	1
H.S. Grad	22	12	9	1	3
1 to 3 College	22	8	13	1	1
4+ College	12	6	3	3	0
Unknown	4	1	3	0	0

PEDURACE

**Notes:**

Fetal deaths are reportable events if the fetus weighs at least 350 grams, or if weight is unknown, has reached at least 20 weeks of gestation. For more details, see "Basic Definitions".

\*People of Hispanic origin may be of any race.

**Source:**

Delaware Health Statistics Center

**TABLE D-13. NUMBER OF FETAL DEATHS BY RACE, HISPANIC ORIGIN, MARITAL STATUS OF WOMAN, COUNTY, AND DELAWARE, 2015**

Area/ Marital Status	Race-Hispanic Origin				
	All Races	White	Black	Other	Hispanic*
<b>Delaware</b>	68	30	32	6	6
Married	29	14	9	6	0
Single	39	16	23	0	6
<b>Kent</b>	13	5	8	0	2
Married	4	2	2	0	0
Single	9	3	6	0	2
<b>New Castle</b>	43	18	20	5	3
Married	18	9	4	5	0
Single	25	9	16	0	3
<b>Sussex</b>	12	7	4	1	1
Married	7	3	3	1	0
Single	5	4	1	0	1

Note: Fetal deaths are reportable events if the fetus weighs at least 350 grams, or if weight is unknown, has reached at least 20 weeks of gestation. For more details, see "Basic Definitions".

\*People of Hispanic origin may be of any race.

Source: Delaware Health and Social Services, Division of Public Health, Delaware Health Statistics Center

**TABLE D-14. NUMBER OF FETAL DEATHS BY WEIGHT OF FETUS IN GRAMS, RACE OF WOMAN, COUNTY, AND DELAWARE 2015**

Area/ Weight	Race			
	All Races	White	Black	Other
<b>Delaware</b>	68	30	32	6
<500	22	9	11	2
500-749	10	3	5	2
750-999	1	1	0	0
1000-1499	9	2	7	0
1500-1999	3	1	2	0
2000-2499	6	5	1	0
2500+	15	8	5	2
Unknown	2	1	1	0
<b>Kent</b>	13	5	8	0
<500	2	1	1	0
500-749	3	1	2	0
750-999	0	0	0	0
1000-1499	2	0	2	0
1500-1999	0	0	0	0
2000-2499	0	0	0	0
2500+	5	2	3	0
Unknown	1	1	0	0
<b>New Castle</b>	43	18	20	5
<500	16	6	9	1
500-749	4	0	2	2
750-999	0	0	0	0
1000-1499	6	2	4	0
1500-1999	3	1	2	0
2000-2499	5	4	1	0
2500+	9	5	2	2
Unknown	0	0	0	0
<b>Sussex</b>	12	7	4	1
<500	4	2	1	1
500-749	3	2	1	0
750-999	1	1	0	0
1000-1499	1	0	1	0
1500-1999	0	0	0	0
2000-2499	1	1	0	0
2500+	1	1	0	0
Unknown	1	0	1	0

Note: Fetal deaths are reportable events if the fetus weighs at least 350 grams, or if weight is unknown, has reached at least 20 weeks of gestation. For more details, see "Basic Definitions."

Source: Delaware Health and Social Services, Division of Public Health, Delaware Health Statistics Center

**TABLE D-15. NUMBER OF FETAL DEATHS BY WEEKS OF GESTATION, RACE OF WOMAN, COUNTY, AND DELAWARE, 2015**

Area/ Age	Race			
	All Races	White	Black	Other
<b>Delaware</b>	68	30	32	6
<20 Weeks	2	1	1	0
20-24 Weeks	28	14	12	2
25-29 Weeks	5	1	2	2
30-34 Weeks	9	1	8	0
35-39 Weeks	23	12	9	2
40+ Weeks	1	1	0	0
Unknown	0	0	0	0
<b>Kent</b>	13	5	8	0
<20 Weeks	0	0	0	0
20-24 Weeks	5	3	2	0
25-29 Weeks	0	0	0	0
30-34 Weeks	3	0	3	0
35-39 Weeks	5	2	3	0
40+ Weeks	0	0	0	0
Unknown	0	0	0	0
<b>New Castle</b>	43	18	20	5
<20 Weeks	2	1	1	0
20-24 Weeks	15	6	8	1
25-29 Weeks	5	1	2	2
30-34 Weeks	5	1	4	0
35-39 Weeks	15	8	5	2
40+ Weeks	1	1	0	0
Unknown	0	0	0	0
<b>Sussex</b>	12	7	4	1
<20 Weeks	0	0	0	0
20-24 Weeks	8	5	2	1
25-29 Weeks	0	0	0	0
30-34 Weeks	1	0	1	0
35-39 Weeks	3	2	1	0
40+ Weeks	0	0	0	0
Unknown	0	0	0	0

*Note:* Fetal deaths are reportable events if the fetus weighs at least 350 grams, or if weight is unknown, has reached at least 20 weeks of gestation. For more details, see "Basic Definitions".

*Source:* Delaware Health and Social Services, Division of Public Health, Delaware Health Statistics Center

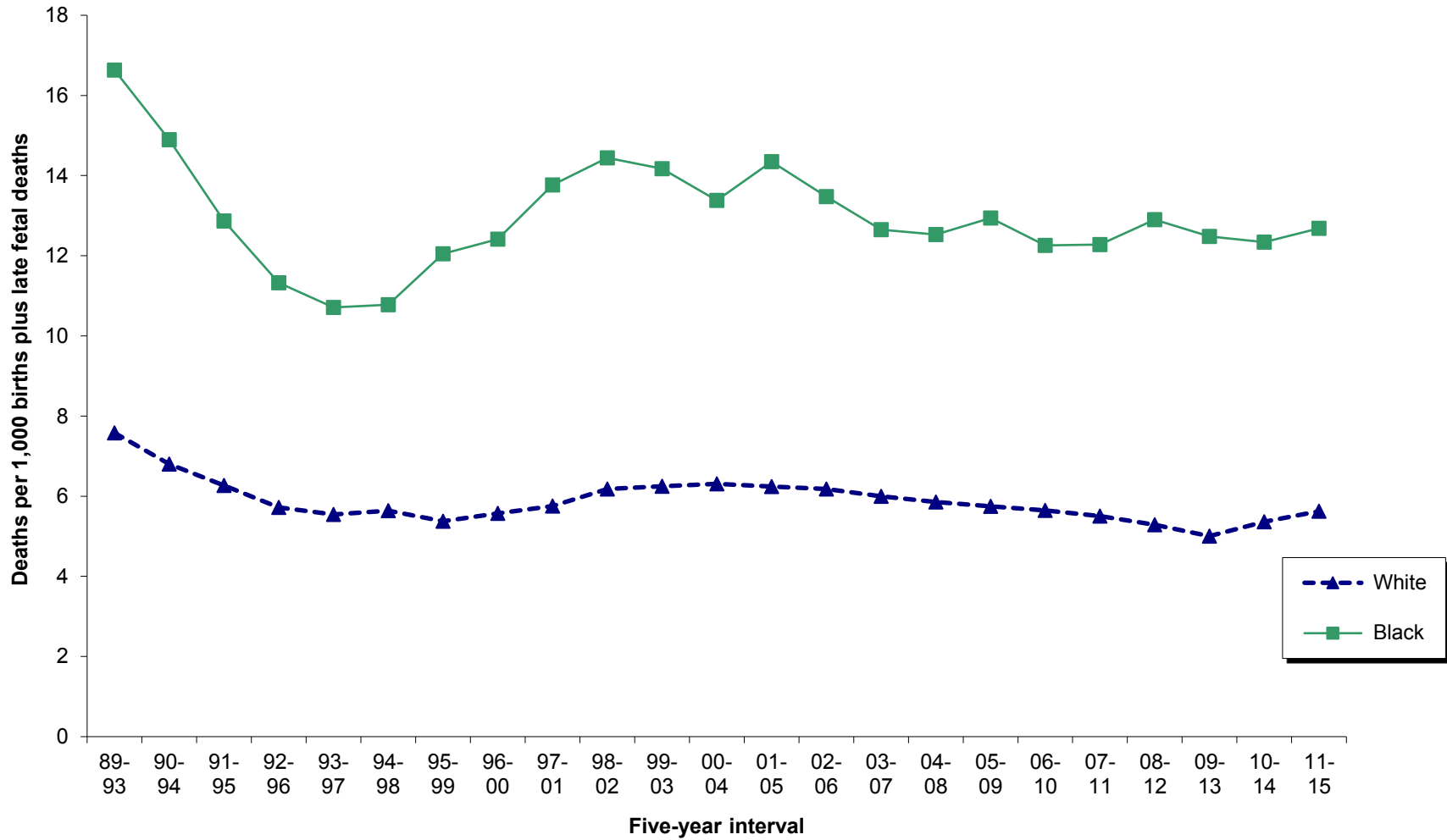
**TABLE D-16. FIVE-YEAR AVERAGE PERINATAL MORTALITY RATES BY RACE, COUNTY, AND DELAWARE, 1997-2015**

Area/ Race	1997 -2001	1998 -2002	1999 -2003	2000 -2004	2001 -2005	2002 -2006	2003 -2007	2004 -2008	2005 -2009	2006 -2010	2007 -2011	2008 -2012	2009 -2013	2010 -2014	2011 -2015
<b>Delaware</b>															
All Races	7.6	8.1	8.1	7.9	8.2	8.0	7.5	7.5	7.6	7.4	7.4	7.6	7.3	7.5	7.8
White	5.8	6.2	6.3	6.3	6.2	6.2	6.0	5.9	5.7	5.6	5.5	5.3	5.0	5.4	5.6
Black	13.8	14.4	14.2	13.4	14.3	13.5	12.6	12.5	12.9	12.3	12.3	12.9	12.5	12.3	12.7
<b>Kent</b>															
All Races	7.3	8.9	8.7	8.2	8.7	8.0	5.8	6.0	6.3	5.9	6.2	7.1	6.3	6.1	6.7
White	6.2	8.1	7.8	7.3	6.9	5.9	3.6	3.8	3.7	4.4	4.8	5.1	4.5	4.9	4.6
Black	11.7	11.8	12.1	10.7	13.8	13.7	11.5	11.8	13.7	10.4	10.0	12.4	11.1	9.2	11.3
<b>New Castle</b>															
All Races	7.9	8.3	8.5	8.3	8.5	8.3	8.1	8.1	8.2	8.0	8.3	8.4	8.1	8.3	8.8
White	5.6	5.8	6.2	6.3	6.4	6.3	6.4	6.3	6.4	5.7	5.8	5.7	5.3	5.4	6.3
Black	15.3	16.3	15.9	14.9	15.0	14.1	13.4	13.2	12.7	13.1	13.7	13.6	13.4	14.2	14.0
<b>Sussex</b>															
All Races	6.6	6.4	5.9	6.2	6.6	6.9	7.3	7.0	7.0	7.3	6.1	5.9	6.1	6.3	5.9
White	5.7	5.5	5.1	5.3	5.2	6.1	6.9	6.4	5.7	6.5	5.4	4.5	4.7	5.6	5.1
Black	9.7	9.6	9.1	9.8	12.0	10.3	10.7	10.6	12.9	10.8	8.9	10.6	10.2	8.5	8.6

Note: Perinatal mortality rate defined as: Infant deaths of less than 7 days and fetal deaths with gestation of 28 weeks or more, per 1,000 live births and specified fetal deaths.

Source: Delaware Health and Social Services, Division of Public Health, Delaware Health Statistics Center

**Figure D-4. Five-year Average Perinatal Mortality Rates by Race, Delaware, 1989- 2015**



Source: Delaware Health and Social Services, Division of Public Health, Delaware Health Statistics Center



**TABLE D-17. NUMBER AND PERCENT OF INDUCED TERMINATIONS OF PREGNANCY BY SELECTED CHARACTERISTICS, DELAWARE, 2015**

Characteristic	Number	Percent	Characteristic	Number	Percent
<b>Total</b>	2785	100.0%	<b>Marital Status</b>		
<b>Place of Residence</b>			Married	332	11.9%
Delaware	2364	84.9%	Single	2453	88.1%
Kent	410	14.7%	Unknown	0	0.0%
New Castle	1609	57.8%	<b>Weeks of Gestation</b>		
Sussex	345	12.4%	<7 Weeks	668	24.0%
Maryland	198	7.1%	7 Weeks	518	18.6%
New Jersey	48	1.7%	8 Weeks	442	15.9%
Pennsylvania	156	5.6%	9-10 Weeks	603	21.7%
Other State	19	0.7%	11-12 Weeks	286	10.3%
<b>Age</b>			13-15 Weeks	224	8.0%
<15	5	0.2%	16-20 Weeks	35	1.3%
15-17	116	4.2%	21+ Weeks	7	0.3%
18-19	212	7.6%	Unknown	2	0.1%
20-24	892	32.0%	<b>Type of Procedure</b>		
25-29	747	26.8%	Suction Curettage	1577	56.6%
30-34	466	16.7%	Medical (Nonsurgical)	1194	42.9%
35-39	264	9.5%	Intrauterine Installation	2	0.1%
40+	83	3.0%	Other	4	0.1%
Unknown	0	0.0%	Unknown	8	0.3%
<b>Race</b>			<b>Previous Pregnancies</b>		
White	1411	50.7%	None	755	27.1%
Black	1200	43.1%	1	560	20.1%
American Indian	7	0.3%	2	486	17.5%
Asian and Pacific Islander	95	3.4%	3+	984	35.3%
Other Races	72	2.6%	Unknown	0	0.0%
Unknown	0	0.0%	<b>Previous Live Births</b>		
<b>Hispanic Origin</b>			None	1098	39.4%
Yes	282	10.1%	1	752	27.0%
No	2498	89.7%	2	548	19.7%
Unknown	5	0.2%	3+	387	13.9%
<b>Level of Education</b>			Unknown	0	0.0%
<9	74	2.7%	<b>Previous Induced Abortions</b>		
9-11	296	10.6%	None	1633	58.6%
H.S. Graduate	1408	50.6%	1	668	24.0%
1 to 3 College	597	21.4%	2	290	10.4%
4+ College	272	9.8%	3+	194	7.0%
Unknown	138	5.0%	Unknown	0	0.0%

*Notes:*

1. Suction Curettage includes Dilation and Evacuation.
2. Women of Hispanic origin may be of any race.
3. Percentages for each characteristic may not add to 100% due to rounding.
4. Percentages are based on the total number of induced terminations of pregnancy.

Source: Delaware Health and Social Services, Division of Public Health, Delaware Health Statistics Center

**TABLE D-18. NUMBER AND PERCENT OF INDUCED TERMINATIONS OF PREGNANCY BY COUNTY OF RESIDENCE, RACE, AND AGE OF WOMAN, DELAWARE, 2015**

Place of Residence/ Race	Age															
	Total		<18		18-19		20-24		25-29		30-34		35+		Unknown	
	Number	Percent	Number	Percent	Number	Percent	Number	Percent	Number	Percent	Number	Percent	Number	Percent	Number	Percent
<b>All Terminations</b>	2785	100.0	121	4.3	212	7.6	892	32.0	747	26.8	466	16.7	347	12.5	0	0.0
White	1411	100.0	58	4.1	99	7.0	455	32.2	366	25.9	246	17.4	187	13.3	0	0.0
Black	1200	100.0	51	4.3	99	8.3	399	33.3	338	28.2	184	15.3	129	10.8	0	0.0
Other	174	100.0	12	6.9	14	8.0	38	21.8	43	24.7	36	20.7	31	17.8	0	0.0
<b>Delaware</b>	2364	100.0	103	4.4	180	7.6	765	32.4	631	26.7	405	17.1	280	11.8	0	0.0
White	1146	100.0	48	4.2	81	7.1	375	32.7	296	25.8	205	17.9	141	12.3	0	0.0
Black	1070	100.0	45	4.2	86	8.0	356	33.3	303	28.3	168	15.7	112	10.5	0	0.0
Other	148	100.0	10	6.8	13	8.8	34	23.0	32	21.6	32	21.6	27	18.2	0	0.0
Kent	410	100.0	17	4.1	35	8.5	152	37.1	107	26.1	68	16.6	31	7.6	0	0.0
White	185	100.0	10	5.4	12	6.5	67	36.2	49	26.5	33	17.8	14	7.6	0	0.0
Black	201	100.0	5	2.5	20	10.0	76	37.8	54	26.9	31	15.4	15	7.5	0	0.0
Other	24	100.0	2	8.3	3	12.5	9	37.5	4	16.7	4	16.7	2	8.3	0	0.0
New Castle	1609	100.0	65	4.0	120	7.5	501	31.1	439	27.3	273	17.0	211	13.1	0	0.0
White	723	100.0	23	3.2	57	7.9	230	31.8	192	26.6	120	16.6	101	14.0	0	0.0
Black	778	100.0	36	4.6	56	7.2	250	32.1	223	28.7	127	16.3	86	11.1	0	0.0
Other	108	100.0	6	5.6	7	6.5	21	19.4	24	22.2	26	24.1	24	22.2	0	0.0
Sussex	345	100.0	21	6.1	25	7.2	112	32.5	85	24.6	64	18.6	38	11.0	0	0.0
White	238	100.0	15	6.3	12	5.0	78	32.8	55	23.1	52	21.8	26	10.9	0	0.0
Black	91	100.0	4	4.4	10	11.0	30	33.0	26	28.6	10	11.0	11	12.1	0	0.0
Other	16	100.0	2	12.5	3	18.8	4	25.0	4	25.0	2	12.5	1	6.3	0	0.0
<b>Other State</b>	421	100.0	18	4.3	32	7.6	127	30.2	116	27.6	61	14.5	67	15.9	0	0.0
White	265	100.0	10	3.8	18	6.8	80	30.2	70	26.4	41	15.5	46	17.4	0	0.0
Black	130	100.0	6	4.6	13	10.0	43	33.1	35	26.9	16	12.3	17	13.1	0	0.0
Other	26	100.0	2	7.7	1	3.8	4	15.4	11	42.3	4	15.4	4	15.4	0	0.0

*Notes:*

1. Percentages may not add to 100% due to rounding.
2. Percentages are calculated based upon the total number of induced terminations of pregnancy in each race category.
3. Percentages for the race category "Other" may be misleading due to the small number of induced terminations of pregnancy in this category.

*Source: Delaware Health and Social Services, Division of Public Health, Delaware Health Statistics Center*

**TABLE D-19. NUMBER OF INDUCED TERMINATIONS OF PREGNANCY BY PLACE OF RESIDENCE, WEEKS OF GESTATION, AND AGE OF WOMAN, DELAWARE, 2015**

Place of Residence/ Weeks	AGE						
	Total	<20	20-24	25-29	30-34	35-39	40+
<b>All Terminations</b>	2785	333	892	747	466	264	83
<7 Weeks	668	75	191	171	113	93	25
7 Weeks	518	57	164	141	102	42	12
8 Weeks	442	52	148	112	71	44	15
9-10 Weeks	603	78	195	177	90	46	17
11-12 Weeks	286	35	101	72	49	19	10
13-15 Weeks	224	28	77	62	37	16	4
16-20 Weeks	35	8	10	10	3	4	0
21+ Weeks	7	0	5	1	1	0	0
Unknown	2	0	1	1	0	0	0
<b>Delaware</b>	2364	283	765	631	405	217	63
<7 Weeks	546	59	155	145	96	73	18
7 Weeks	439	49	141	116	87	35	11
8 Weeks	393	50	132	101	64	37	9
9-10 Weeks	524	68	172	150	79	42	13
11-12 Weeks	242	29	85	63	42	15	8
13-15 Weeks	184	22	67	47	33	11	4
16-20 Weeks	29	6	8	8	3	4	0
21+ Weeks	6	0	4	1	1	0	0
Unknown	1	0	1	0	0	0	0
<b>Kent</b>	410	52	152	107	68	23	8
<7 Weeks	83	8	28	26	14	4	3
7 Weeks	79	10	26	20	17	4	2
8 Weeks	78	11	34	17	13	2	1
9-10 Weeks	96	13	33	28	14	7	1
11-12 Weeks	45	5	21	9	5	4	1
13-15 Weeks	26	4	8	7	5	2	0
16-20 Weeks	2	1	1	0	0	0	0
21+ Weeks	1	0	1	0	0	0	0
Unknown	0	0	0	0	0	0	0
<b>New Castle</b>	1609	185	501	439	273	161	50
<7 Weeks	386	44	102	100	70	56	14
7 Weeks	288	30	94	77	57	22	8
8 Weeks	269	32	77	77	43	32	8
9-10 Weeks	345	39	117	100	49	29	11
11-12 Weeks	164	21	54	45	28	9	7
13-15 Weeks	131	15	50	32	23	9	2
16-20 Weeks	22	4	4	7	3	4	0
21+ Weeks	3	0	2	1	0	0	0
Unknown	1	0	1	0	0	0	0
<b>Sussex</b>	345	46	112	85	64	33	5
<7 Weeks	77	7	25	19	12	13	1
7 Weeks	72	9	21	19	13	9	1
8 Weeks	46	7	21	7	8	3	0
9-10 Weeks	83	16	22	22	16	6	1
11-12 Weeks	33	3	10	9	9	2	0
13-15 Weeks	27	3	9	8	5	0	2
16-20 Weeks	5	1	3	1	0	0	0
21+ Weeks	2	0	1	0	1	0	0
Unknown	0	0	0	0	0	0	0
<b>Other State</b>	421	50	127	116	61	47	20
<7 Weeks	122	16	36	26	17	20	7
7 Weeks	79	8	23	25	15	7	1
8 Weeks	49	2	16	11	7	7	6
9-10 Weeks	79	10	23	27	11	4	4
11-12 Weeks	44	6	16	9	7	4	2
13-15 Weeks	40	6	10	15	4	5	0
16-20 Weeks	6	2	2	2	0	0	0
21+ Weeks	1	0	1	0	0	0	0
Unknown	1	0	0	1	0	0	0

Note:Weeks of gestation are based on clinical estimate.

Source: Delaware Department of Health and Social Services, Division of Public Health, Delaware Health Statistics Center

**TABLE D-20. NUMBER OF INDUCED TERMINATIONS OF PREGNANCY BY PLACE OF RESIDENCE, AGE OF WOMAN, AND NUMBER OF PREVIOUS PREGNANCIES, DELAWARE, 2015**

Place of Residence/Age	Number of Previous Pregnancies					Not Stated
	Total	None	1	2	3+	
<b>All Terminations</b>	2785	755	560	486	984	0
<20	333	245	67	11	10	0
20-24	892	331	242	153	166	0
25-29	747	115	148	153	331	0
30-34	466	37	73	101	255	0
35-39	264	24	23	49	168	0
40+	83	3	7	19	54	0
Unknown	0	0	0	0	0	0
<b>Delaware</b>	2364	616	478	413	857	0
<20	283	208	58	8	9	0
20-24	765	263	209	140	153	0
25-29	631	90	130	125	286	0
30-34	405	34	58	85	228	0
35-39	217	19	17	39	142	0
40+	63	2	6	16	39	0
Unknown	0	0	0	0	0	0
<b>Kent</b>	410	122	74	71	143	0
<20	52	42	9	1	0	0
20-24	152	57	37	28	30	0
25-29	107	18	21	22	46	0
30-34	68	5	5	15	43	0
35-39	23	0	2	2	19	0
40+	8	0	0	3	5	0
Unknown	0	0	0	0	0	0
<b>New Castle</b>	1609	401	335	279	594	0
<20	185	130	42	5	8	0
20-24	501	171	140	85	105	0
25-29	439	64	94	92	189	0
30-34	273	17	41	59	156	0
35-39	161	17	13	27	104	0
40+	50	2	5	11	32	0
Unknown	0	0	0	0	0	0
<b>Sussex</b>	345	93	69	63	120	0
<20	46	36	7	2	1	0
20-24	112	35	32	27	18	0
25-29	85	8	15	11	51	0
30-34	64	12	12	11	29	0
35-39	33	2	2	10	19	0
40+	5	0	1	2	2	0
Unknown	0	0	0	0	0	0
<b>Other State</b>	421	139	82	73	127	0
<20	50	37	9	3	1	0
20-24	127	68	33	13	13	0
25-29	116	25	18	28	45	0
30-34	61	3	15	16	27	0
35-39	47	5	6	10	26	0
40+	20	1	1	3	15	0
Unknown	0	0	0	0	0	0

Source: Delaware Department of Health and Social Services, Division of Public Health, Delaware Health Statistics Center

**TABLE D-21 NUMBER OF INDUCED TERMINATIONS OF PREGNANCY BY PLACE OF RESIDENCE, AGE OF WOMAN, AND NUMBER OF PREVIOUS LIVE BIRTHS, DELAWARE, 2015**

Place of Residence/ Age	Number of Previous Live Births					
	Total	None	1	2	3+	Not Stated
<b>All Terminations</b>	2785	1098	752	548	387	0
<20	333	288	38	6	1	0
20-24	892	475	273	114	30	0
25-29	747	221	232	171	123	0
30-34	466	72	142	141	111	0
35-39	264	37	52	82	93	0
40+	83	5	15	34	29	0
Unknown	0	0	0	0	0	0
<b>Delaware</b>	2364	901	652	465	346	0
<20	283	245	34	3	1	0
20-24	765	385	249	103	28	0
25-29	631	177	196	146	112	0
30-34	405	62	122	119	102	0
35-39	217	29	39	70	79	0
40+	63	3	12	24	24	0
Unknown	0	0	0	0	0	0
<b>Kent</b>	410	164	109	79	58	0
<20	52	49	3	0	0	0
20-24	152	75	48	21	8	0
25-29	107	31	36	26	14	0
30-34	68	8	16	22	22	0
35-39	23	1	5	7	10	0
40+	8	0	1	3	4	0
Unknown	0	0	0	0	0	0
<b>New Castle</b>	1609	613	452	321	223	0
<20	185	159	23	2	1	0
20-24	501	261	160	67	13	0
25-29	439	128	144	96	71	0
30-34	273	37	91	83	62	0
35-39	161	25	24	55	57	0
40+	50	3	10	18	19	0
Unknown	0	0	0	0	0	0
<b>Sussex</b>	345	124	91	65	65	0
<20	46	37	8	1	0	0
20-24	112	49	41	15	7	0
25-29	85	18	16	24	27	0
30-34	64	17	15	14	18	0
35-39	33	3	10	8	12	0
40+	5	0	1	3	1	0
Unknown	0	0	0	0	0	0
<b>Other State</b>	421	197	100	83	41	0
<20	50	43	4	3	0	0
20-24	127	90	24	11	2	0
25-29	116	44	36	25	11	0
30-34	61	10	20	22	9	0
35-39	47	8	13	12	14	0
40+	20	2	3	10	5	0
Unknown	0	0	0	0	0	0

Source: Delaware Department of Health and Social Services, Division of Public Health, Delaware Health Statistics Center

**TABLE D-22. NUMBER OF INDUCED TERMINATIONS OF PREGNANCY BY PLACE OF RESIDENCE, AGE OF WOMAN, AND NUMBER OF PREVIOUS INDUCED TERMINATIONS, DELAWARE, 2015**

Place of Residence/ Age	Number of Previous Induced Terminations					
	Total	None	1	2	3+	Not Stated
<b>All Terminations</b>	2785	1633	668	290	194	0
<20	333	287	40	3	3	0
20-24	892	592	207	66	27	0
25-29	747	360	214	104	69	0
30-34	466	219	118	68	61	0
35-39	264	127	68	40	29	0
40+	83	48	21	9	5	0
Unknown		0	0	0	0	0
<b>Delaware</b>	2364	1371	579	243	171	0
<20	283	243	34	3	3	0
20-24	765	497	184	57	27	0
25-29	631	299	187	86	59	0
30-34	405	186	103	61	55	0
35-39	217	107	55	30	25	0
40+	63	39	16	6	2	0
Unknown	0	0	0	0	0	0
<b>Kent</b>	410	251	93	45	21	0
<20	52	45	7	0	0	0
20-24	152	104	34	11	3	0
25-29	107	58	25	16	8	0
30-34	68	28	19	15	6	0
35-39	23	10	8	2	3	0
40+	8	6	0	1	1	0
Unknown	0	0	0	0	0	0
<b>New Castle</b>	1609	887	414	170	138	0
<20	185	154	25	3	3	0
20-24	501	317	121	41	22	0
25-29	439	193	141	58	47	0
30-34	273	119	71	37	46	0
35-39	161	76	40	26	19	0
40+	50	28	16	5	1	0
Unknown	0	0	0	0	0	0
<b>Sussex</b>	345	233	72	28	12	0
<20	46	44	2	0	0	0
20-24	112	76	29	5	2	0
25-29	85	48	21	12	4	0
30-34	64	39	13	9	3	0
35-39	33	21	7	2	3	0
40+	5	5	0	0	0	0
Unknown	0	0	0	0	0	0
<b>Other State</b>	421	262	89	47	23	0
<20	50	44	6	0	0	0
20-24	127	95	23	9	0	0
25-29	116	61	27	18	10	0
30-34	61	33	15	7	6	0
35-39	47	20	13	10	4	0
40+	20	9	5	3	3	0
Unknown	0	0	0	0	0	0

Source: Delaware Department of Health and Social Services, Division of Public Health, Delaware Health Statistics Center