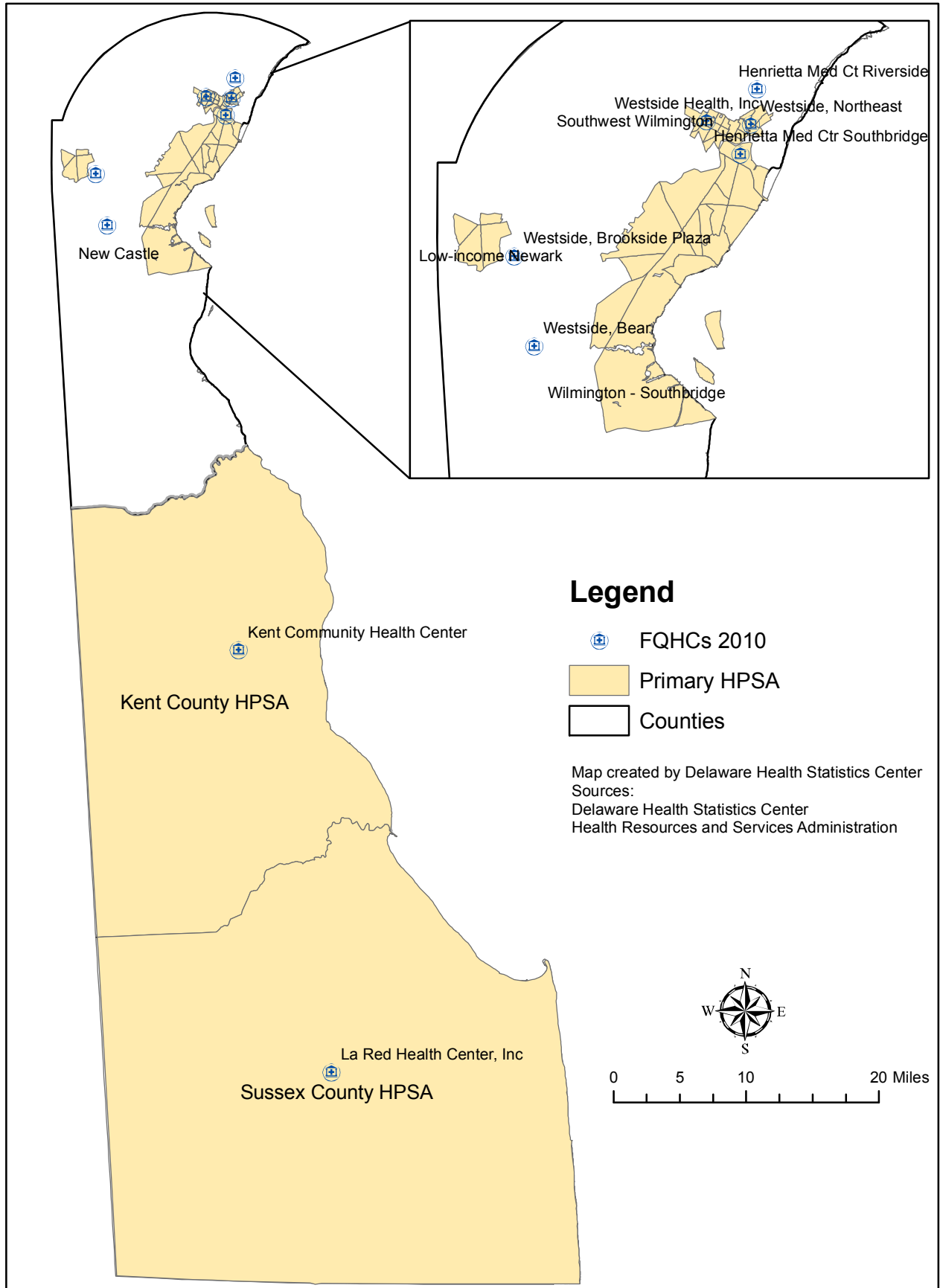
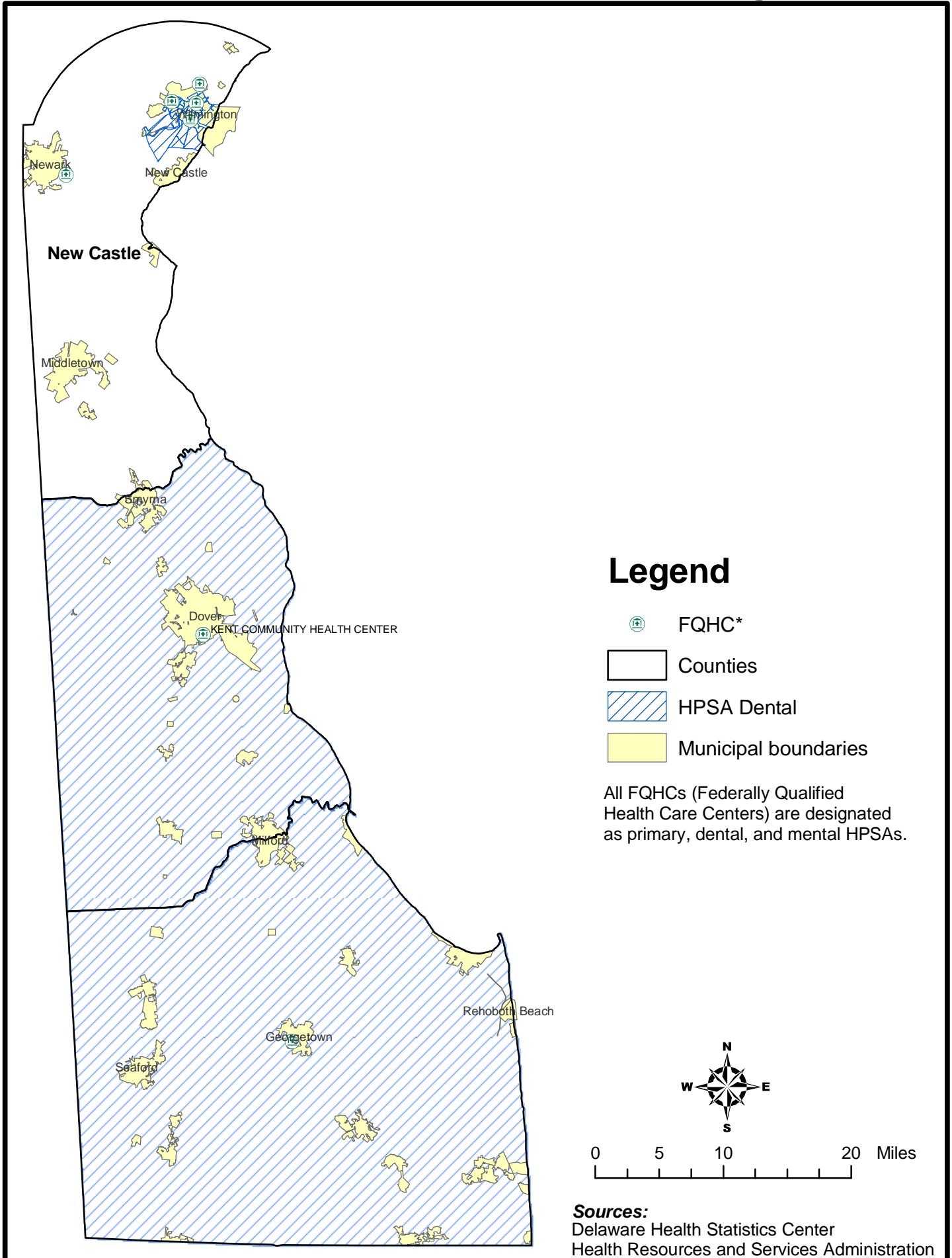


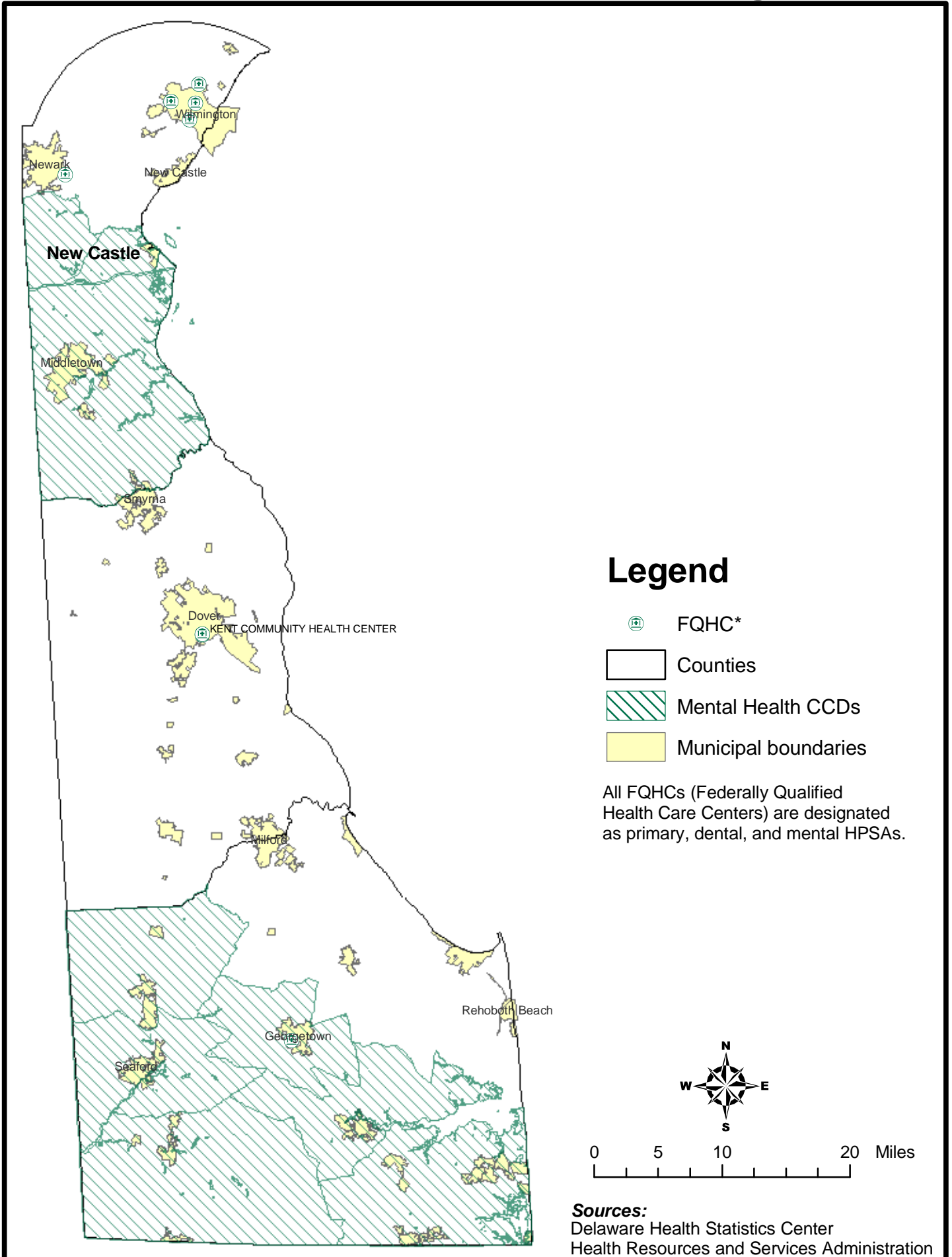
Primary HPSA Designation Delaware, 2010




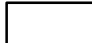


Delaware Health Professional Shortage Areas



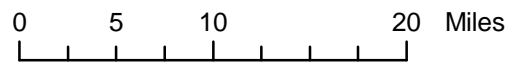
Delaware Health Professional Shortage Areas



Legend

-  FQHC*
-  Counties
-  Mental Health CCDs
-  Municipal boundaries

All FQHCs (Federally Qualified Health Care Centers) are designated as primary, dental, and mental HPSAs.



Sources:
 Delaware Health Statistics Center
 Health Resources and Services Administration

Delaware HPSAs: Primary Care, Mental, and Dental

