

Right Size Delaware Fit not Fat





*University of Delaware
And
Delaware Health Sciences Alliance*

Providing a Platform for Transforming Healthcare
through Interdisciplinary Education & Research



Nutrition



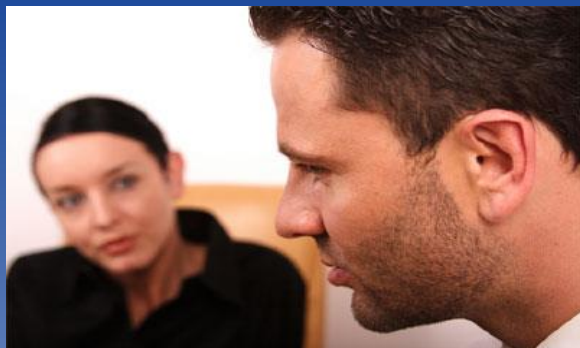
Nursing



Kinesiology



Physical Therapy



Behavioral Health



Medical Technology



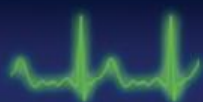
Medical Students

Public Health

Occupational Health

Pharmacy

Explore



Engage



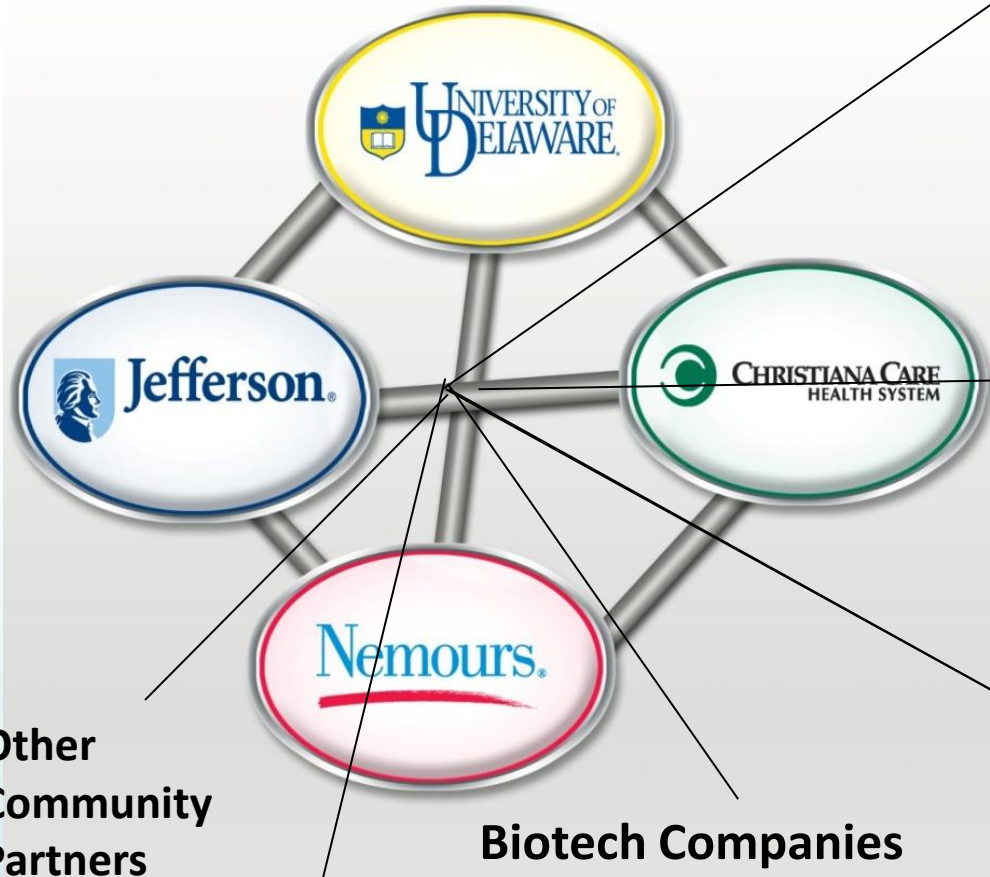
Experience



Excel



Affiliates:



Clinical :

VAMC
Beebe Memorial Hospital
Bayhealth Medical Center
Nanticoke Memorial Hospital
St. Francis Hospital

Delaware State Agencies:

Department of Health and
Social Services
Division of Public Health
Health Care Commission

Academic Institutions:

Delaware State University
Del Tech
Wesley

Biotech Companies

Non-Profits

**Other
Community
Partners**



Impact on the Patient





Delaware Health Sciences Alliance

HEALTHCARE EDUCATION, RESEARCH & SERVICES

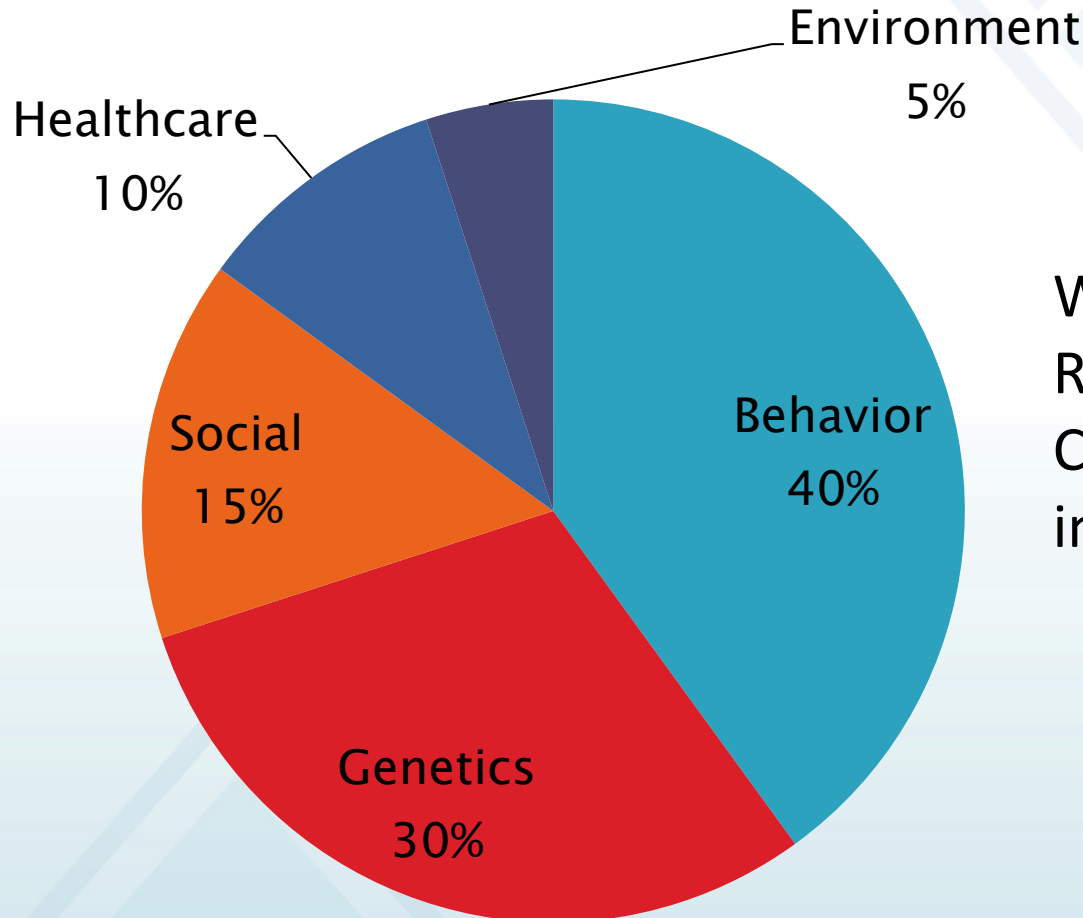
◆ CHRISTIANA CARE HEALTH SYSTEM ◆ NEMOURS ◆ THOMAS JEFFERSON UNIVERSITY ◆ UNIVERSITY OF DELAWARE

www.delawarehsa.org





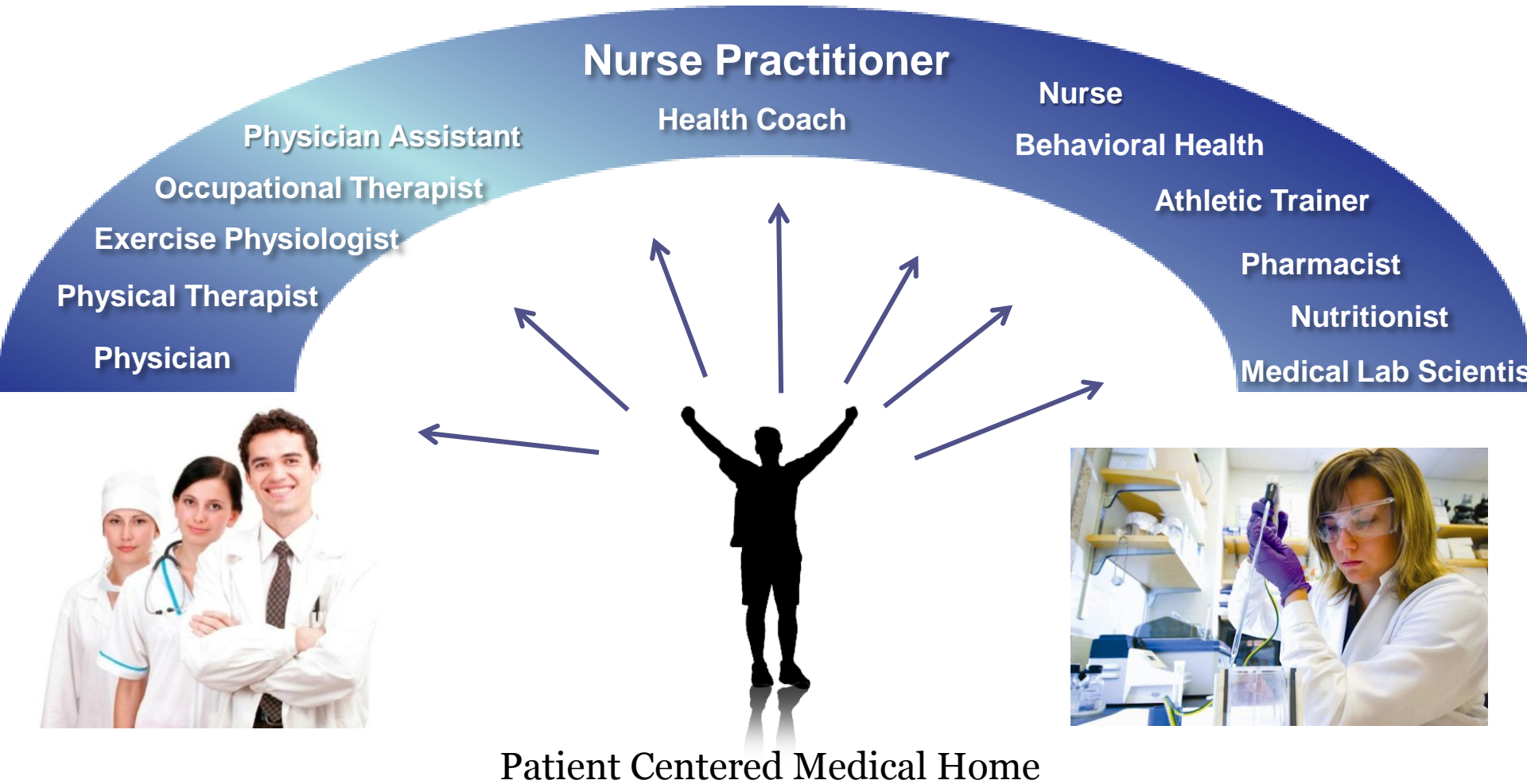
Social determinants of health



WHO 2008
Report:
Closing the Gap
in a Generation

Contribution to premature death

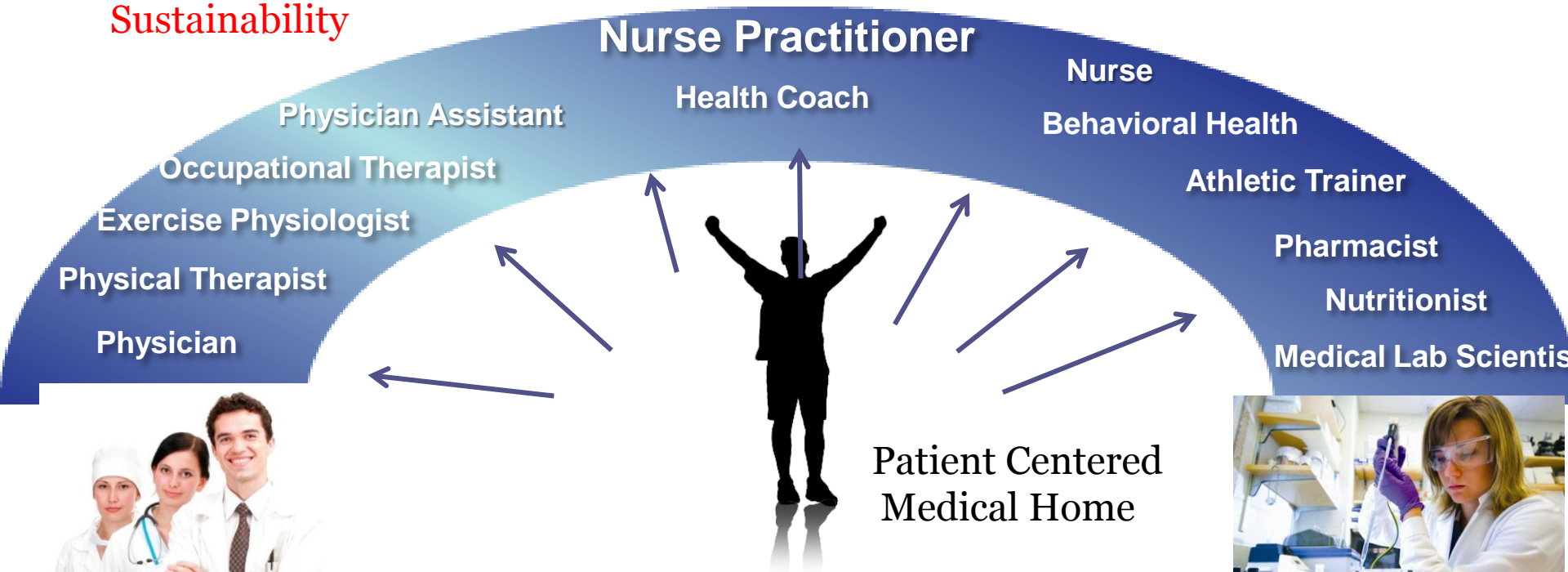
The Healthcare Team



Patient Centered Medical Home

Evaluation of the Pilot Models

Health Outcomes
Financial Tracking
Utilization
Sustainability



UD and DHSA

Informatics
Epidemiology
Policy
Business

Research Analysis
Education of
the Workforce



Educational Programs



UNIVERSITY OF DELAWARE | College of Health Sciences | SCHOOL OF NURSING | RN to MSN Program



UNIVERSITY OF DELAWARE | College of Health Sciences | SCHOOL OF NURSING | Nurse Practitioner Program



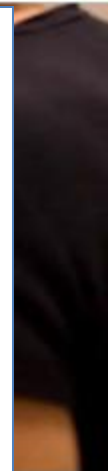
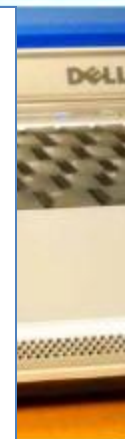
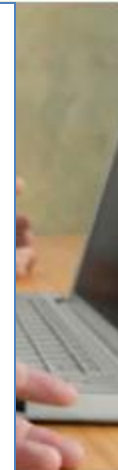
UNIVERSITY OF DELAWARE | College of Health Sciences | SCHOOL OF NURSING | Doctor of Philosophy in Nursing Science Program



UNIVERSITY OF DELAWARE | College of Health Sciences | SCHOOL OF NURSING | Health Services Administration



UNIVERSITY OF DELAWARE | College of Health Sciences | SCHOOL OF NURSING | Clinical Nurse Specialist Program



ended Colleges

SN and

lich or
alth, or with

nt
dent

ducation.html

receptors
ically located
vel time
ed to making
serve students
mprovement.

xcellent pass
i year

TY OF
ARE



NEW

Health Coaching Certificate



- Post-baccalaureate program preparing health professionals to work in a clinical setting as part of a team to facilitate behavior change among at-risk patients, to decrease demand for health care services and to reduce morbidity across the lifespan.

Training serves to develop health coaching skills that will:

- help people clarify their health goals, and implement and sustain behaviors, lifestyles, and attitudes that are conducive to optimal health.
- guide people in their self care and health-maintenance activities.
- assist people in reducing the negative impact made on their lives by chronic conditions such as cardiovascular disease, cancer, and diabetes.

Explore  **Engage**  **Experience**  **Excel™**



Health Ambassadors

Use of Health Ambassadors to increase medical and social services in Kent & Sussex Counties

Plan to utilize relationships with Food bank Hunger Relief Partners and Co-operative Extension Nutrition Assistants to identify community members who could be trained as Health Ambassadors with in rural communities

Goal is to train and implement health ambassadors in the rural sections of the state to improve maternal and child health

Will utilize the health coaching curriculum to train health ambassadors to facilitate motivational interviewing, conduct small focus groups, use simple behavior change techniques, how to access health and social services, and how to educate individuals



HEALTHCARE THEATRE: Transforming *Interprofessional* Education



- Theatre students serve as standardized patients for nursing and PT students
- Enables students to learn how to manage the unexpected without compromising standard of care required with actual patients





Unique collaboration helps educate future healthcare professionals

- **Theatre students** serve as standardized patients for **nursing** and **PT students**
- Other disciplines (e.g., **nutrition, behavioral health**) and **DHSA partners** to be included as program develops
- Based on approach developed by Dr. Paula Stillman (Christiana Care)
- Enables students to learn how to manage the unexpected without compromising standard of care required with actual patients



EXISTING BUILDING & SITE







Health Sciences Complex



Walkable, mixed-use,
healthy campus

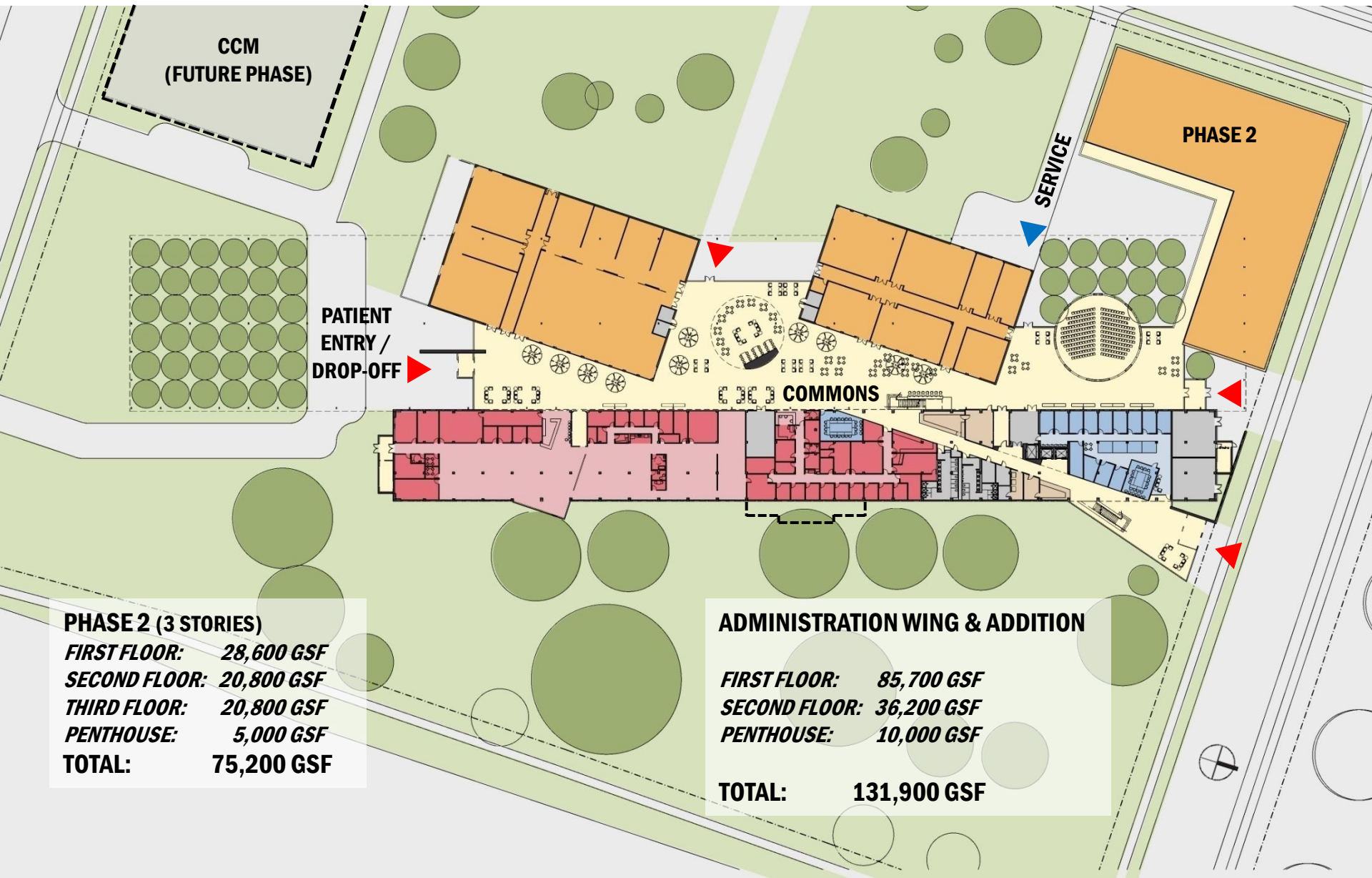
Healthy communities by
design





Transforming the former Chrysler Site
into the UD Health Sciences Complex
And Home of the DHSA

Schematic of Clinics



PHASE 2 (3 STORIES)

<i>FIRST FLOOR:</i>	<i>28,600 GSF</i>
<i>SECOND FLOOR:</i>	<i>20,800 GSF</i>
<i>THIRD FLOOR:</i>	<i>20,800 GSF</i>
<i>PENTHOUSE:</i>	<i>5,000 GSF</i>
TOTAL:	75,200 GSF

ADMINISTRATION WING & ADDITION

<i>FIRST FLOOR:</i>	<i>85,700 GSF</i>
<i>SECOND FLOOR:</i>	<i>36,200 GSF</i>
<i>PENTHOUSE:</i>	<i>10,000 GSF</i>
TOTAL:	131,900 GSF

Nurse Managed Health Center *at the* UNIVERSITY *of* DELAWARE

- Staffed by experienced, board-certified nurse practitioners
- Provides primary care, physical exams and health screenings for employees
- Follow-up care for workers who have been injured on the job





Office of Human Resources - *Employee Wellness*

[Home](#)

[Fitness Services](#)

[Wellness Programs](#)

[Workshops](#)

[HealthyU](#)

[Departmental Services](#)

[Employee Resources](#)

FEATURED PROGRAMS



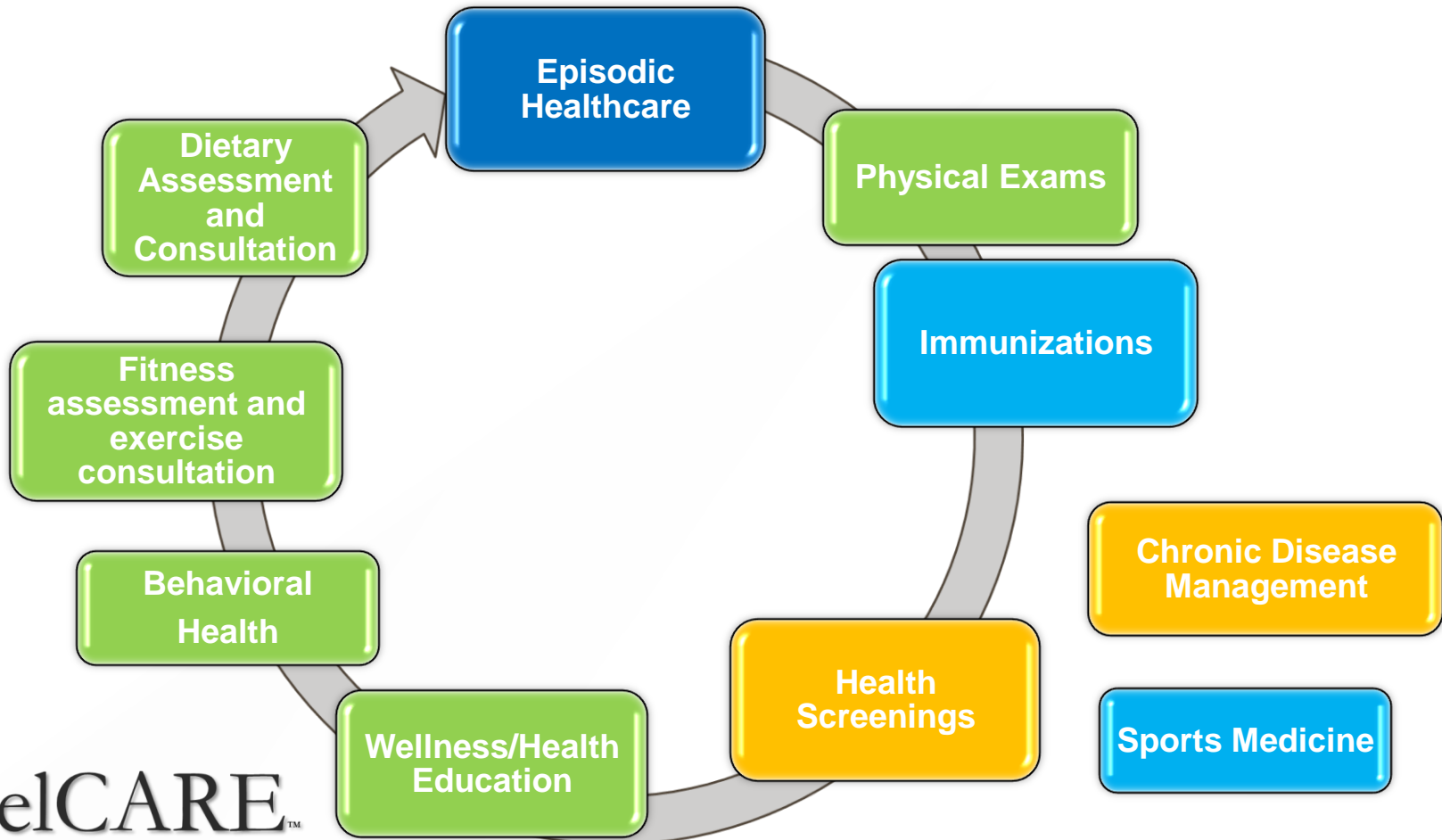
Spring into Wellness
Monday, February 27 - Sunday, May 6, 2012



Employee-Only Fitness Classes - Spring II Session
Monday, April 2 - Thursday, May 10

REGISTER FOR A PROGRAM
[CLICK HERE](#)

An Integrated Approach— UDelCARE™



Patient Center Medical Home

Critical Elements and Next Steps

Models should be developed by teams of Healthcare Professionals and tested. Data will provide evidence based practice

A Model:

Nurse Practitioner driven model

Healthcare delivered by a **team** of Health Professionals

Primary Care and Health and Wellness Programs Linked

Health Coaches as Navigators and increase compliance

Health Ambassadors as Facilitators in the community



Predictions: Improved patient outcomes, improved prevention, enhanced chronic disease management, higher quality of life, more sustainable model, cost savings



for a *healthier*
community



Explore



Engage



Experience



Excel™

UNIVERSITY OF
DELAWARE®

College of
Health Sciences

Second Annual Gala

a view into the future of healthcare

Friday, May 11, 2012

6:00 to 10:00 p.m.

Register today at www.udel.edu/chs/gala