

State Innovation Model (SIM) – HEALTHY NEIGHBORHOODS OVERVIEW

Keanna Faison, Director of Planning and Policy, DE Health Care Commission

Sarah Bercaw, Kent/Smyrna Local Council

Rysheema Dixon, Wilmington/Claymont Local Council

Gina Crist, Wilmington/Claymont Local Council

Cheryl Doucette, Sussex Council Health Coalition



So let's take a look back ...

State Innovation Model (SIM): Funding for Model and Testing Assistance

- The purpose of the State Innovation Models (SIM) initiative is to test whether new payment and service delivery models will produce superior results when implemented in the context of a state-sponsored State Health Care Innovation Plan.

SIM Drivers of Health Care Transformation

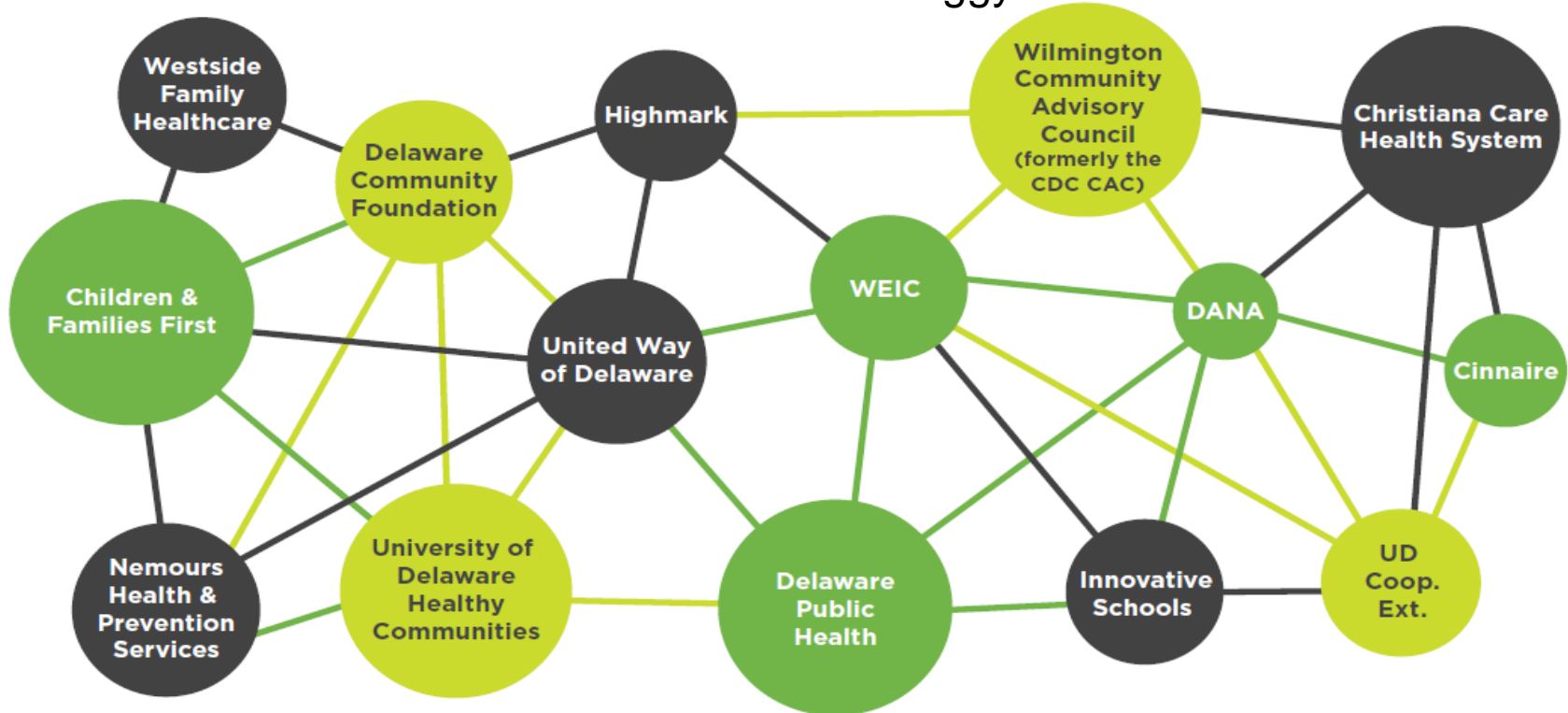
- Payment Reform
- Practice Transformation and Behavioral Health Integration (BHI)
- Patient-Consumer
- Health IT
- **Population Health**
 - Healthy Neighborhoods is included in this driver.

DCHI Healthy Neighborhoods Committee Structure

DCHI HN Co-chair - Matt Swanson, Innovative Schools

DCHI HN Co-chair - Lolita Lopez, Westside Family Healthcare

DCHI ED - Julane Armbrister and HN Director Peggy Geisler



Participating representatives from Highmark, Division of Public Health, Christiana Care, UD Partnership for Healthy Communities, Nemours, Wilmington Community Advisory Council and more!



DCHI HN – Infrastructure to address Task force areas of need



Delaware Local Councils



Dover/Smyrna

Sarah Bercaw, UD Cooperative Extension
Co-Chair of the Dover/Smyrna Local Council



ChooseHealth
DELAWARE

Local council and task forces

Dover/Smyrna Local Council:

- 18 individuals representing:
 - 8 Community Based Organizations
 - 4 Local and State Government Entities
 - Community Members

Behavioral Health and Healthy Lifestyles Task Forces:

- 30 unique individuals across the two Task Forces representing:
 - 14 Community Based Organizations
 - 6 Government Entities
 - Community Members



Dover/Smyrna Local Council



Behavioral Health Task Force



Healthy Lifestyles/Chronic Diseases Task Force



ChooseHealth
DELAWARE

Community-based proposed initiatives



**Open
Streets -
Dover**



**Supporting
Families
Experiencing
Domestic
Violence**



**DOVER INTERFAITH MISSION FOR
HOUSING INC**



**Homeless
Engagement
Initiative**



**Behavioral
Health
Community
Paramedicine**



Wilmington/Claymont

Co-Chairs:

Rysheema Dixon, Wilmington City Council
Gina Crist, UD Cooperative Extension



ChooseHealth
DELAWARE

Representation on the Local Council

- City of Wilmington
- University of Delaware Cooperative Extension
- Nemours Children's Health System
- Claymont Community Center
- Delaware Division of Public Health
- Westside Family Healthcare
- Eastside Rising
- Mental Health Association
- United Way of Delaware
- Connections
- Housing Alliance Delaware
- Delaware Coalition Against Domestic Violence (DCAV)
- Praying Ground Community Church



Community-based proposed initiatives



Peer Internship Program



Behavioral Health in Schools



Community Health Worker Project



**CLAYMONT
COMMUNITY CENTER**
Continuing to Build A
Brighter Tomorrow

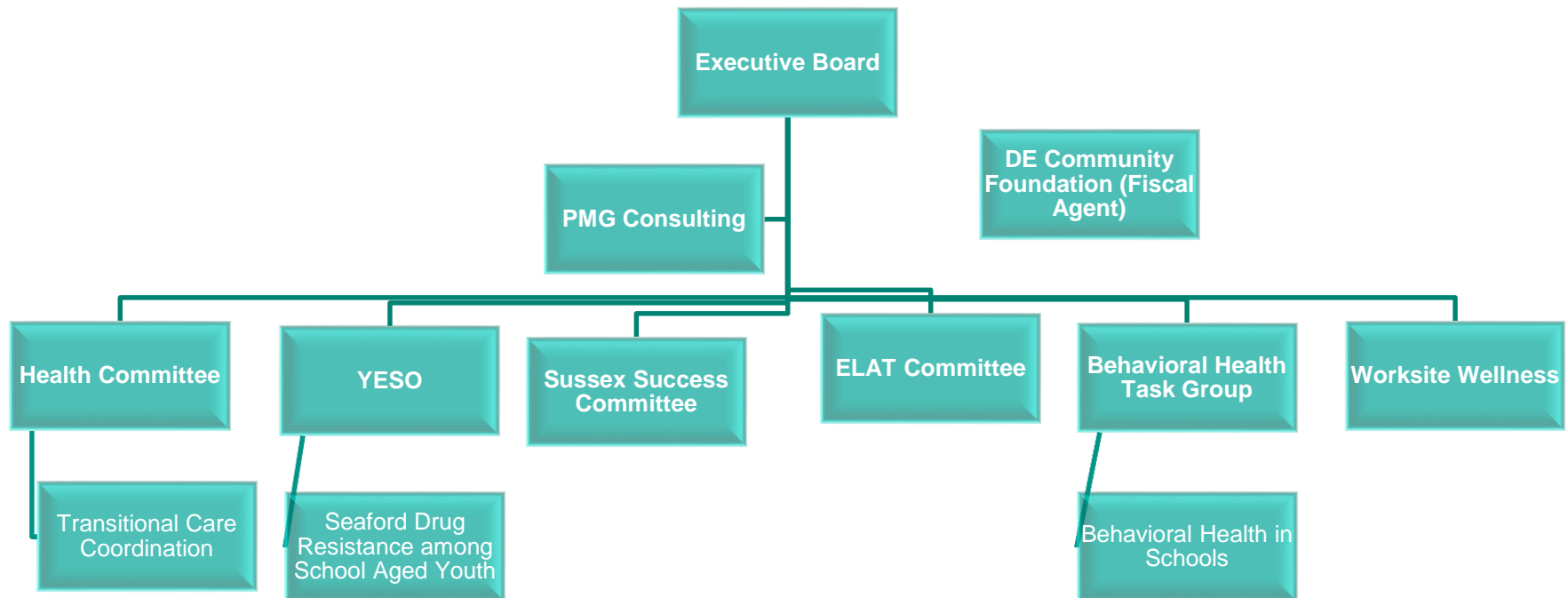
Open Streets



Sussex County Health Coalition (SCHC)

Cheryl Doucette, Sussex County Health Coalition

Local Council and Task Forces



Community-based proposed initiatives

Transitional Care Coordination

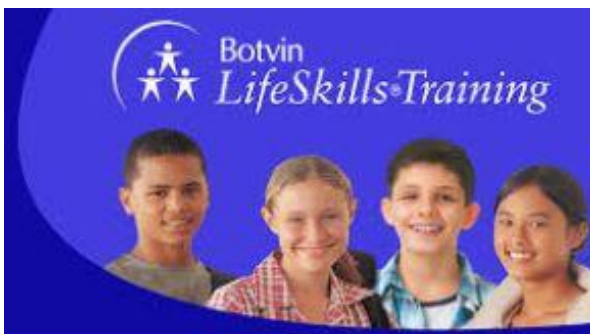
Addressing avoidable ED visits



**Sussex
School-
Based Mental
Health
Collaborative**

Seaford Goes Purple

SEAFORD DRUG FREE COMMUNITIES



**Seaford Drug Resistance
Among School Aged Youth**



Always Caring. Always Here.

Nanticoke Health Navigator Initiative



CURRENTLY:



Contact Information

Health Care Commission

Keanna Faison

DHCC@state.de.us

Kent/Smyrna Local Council

Sarah Bercaw

sbercaw@udel.edu

Wilmington/Claymont Local Council

Rysheema Dixon

rysheemadixon@gmail.com

Gina Crist

gcrist@udel.edu

Sussex Council Health Coalition

Cheryl Doucette

CDoucette@pmgconsulting.net



ChooseHealth
DELAWARE

Healthy Neighborhoods Sustainability Development Workshop

- **Tuesday, June 12th at Dover Downs Hotel and Conference Center**
 - Co-Ambassador Karyl Rattay, MD, MS - Division of Public Health
 - Co-Ambassador Steve Peuquet, PhD - UD's Center for Community Research and Service
- A sustainability model will be presented as a way to **spark dialogue** regarding Healthy Communities program and policy investment in our state. We are asking for critical feedback to ensure that the model developed will be viable and right for Delaware.
 - **AM** – organizations involved in making monetary investments in community projects
 - **PM** – for all stakeholders involved in community health

Please RSVP to DHCC@state.de.us or contact Sarina Coates of HMA via e- mail at scoates@healthmanagement.com

Requirements of Cooperative Agreements

- Quarterly and annual fiscal and performance reporting
- Monitoring and oversight of partners and subrecipients
- Ongoing audit and evolution through record retention



Thank you for your time



ChooseHealth
DELAWARE