

Delawareans Without Health Insurance 2006

presented to

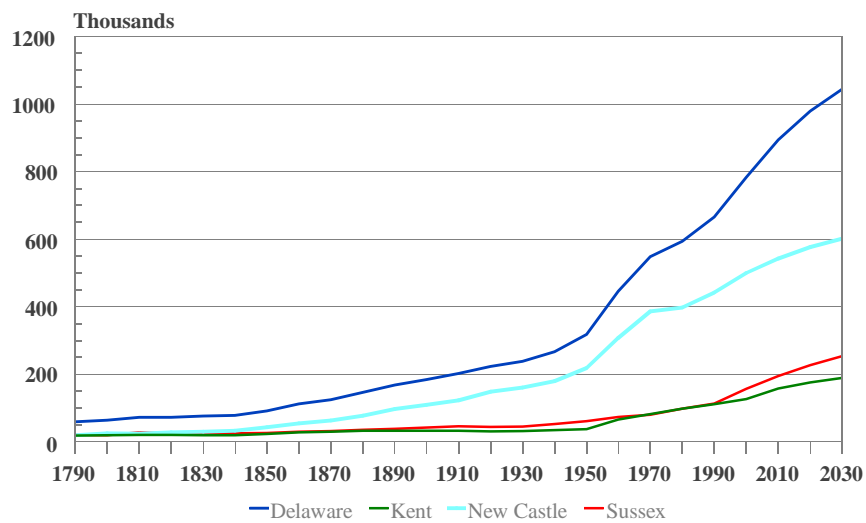
Delaware Health Care Commision

by

Edward C. Ratledge
Center for Applied Demography & Survey Research
University of Delaware

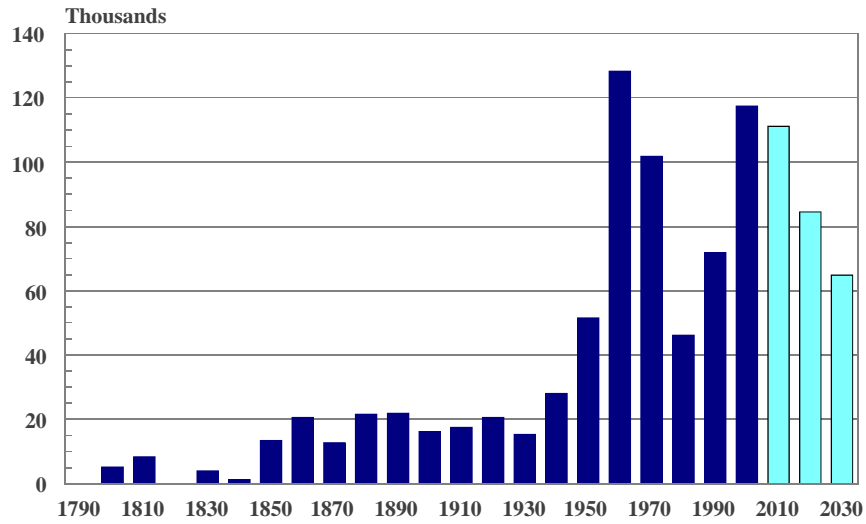
December 5, 2006

Delaware 1790-2030



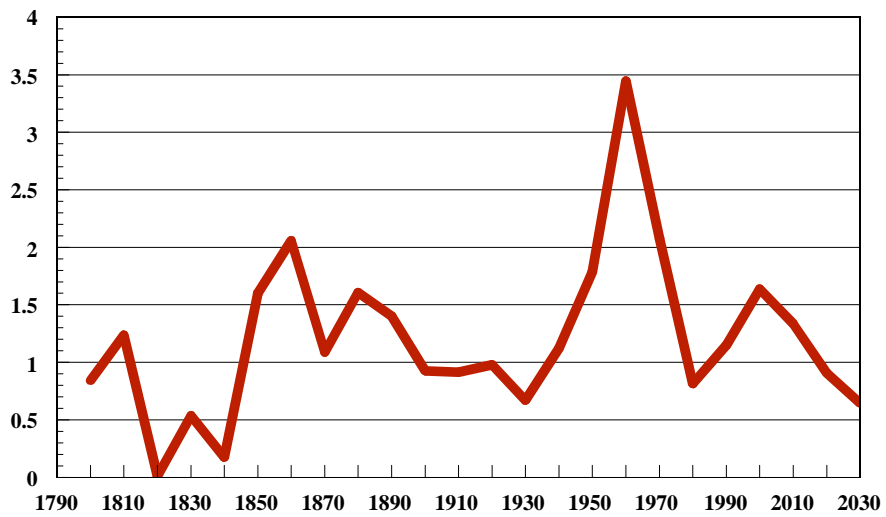
Source: Center for Applied Demography and Survey Research, University of Delaware

Delaware Population Growth 1790-2030

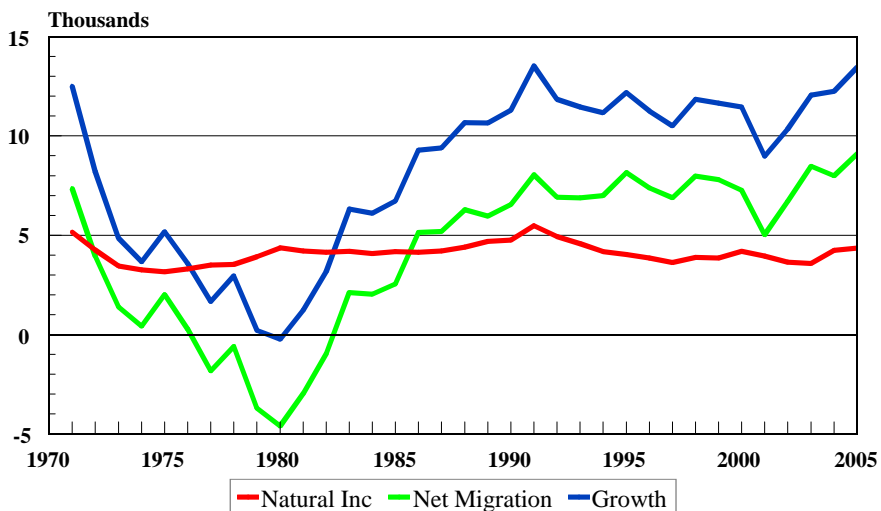


Source: Center for Applied Demography and Survey Research, University of Delaware

Average Annual Population Growth Rates State of Delaware 1800-2030

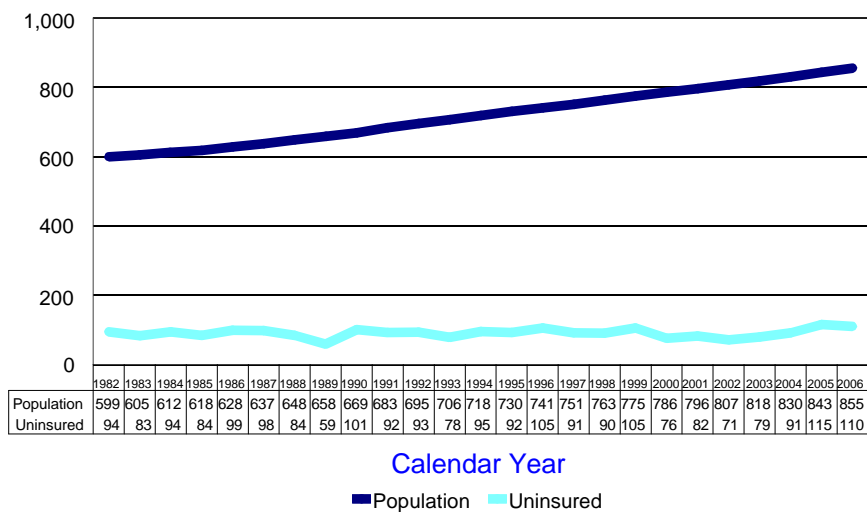


State of Delaware Sources of Population Growth 1970-2005



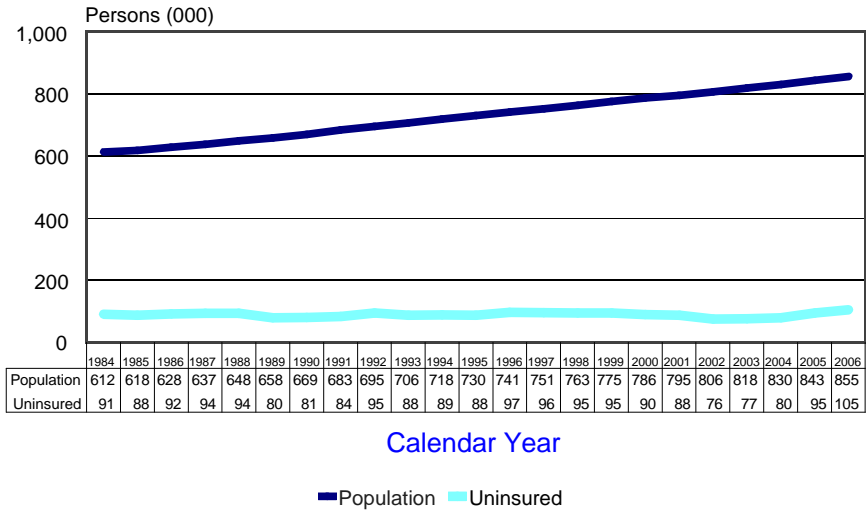
Source: Center for Applied Demography and Survey Research, University of Delaware

Persons Without Health Insurance State of Delaware



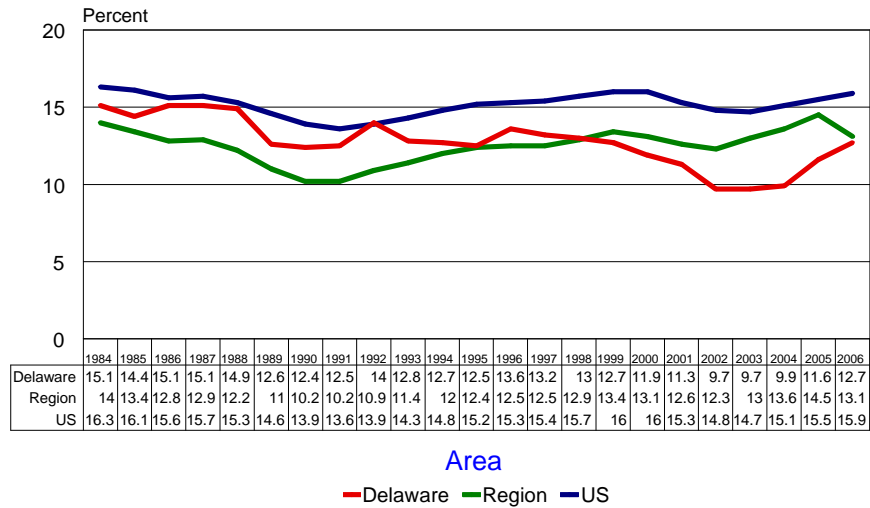
Source: Center for Applied Demography and Survey Research, University of Delaware

Persons Without Health Insurance State of Delaware (3 year moving average)



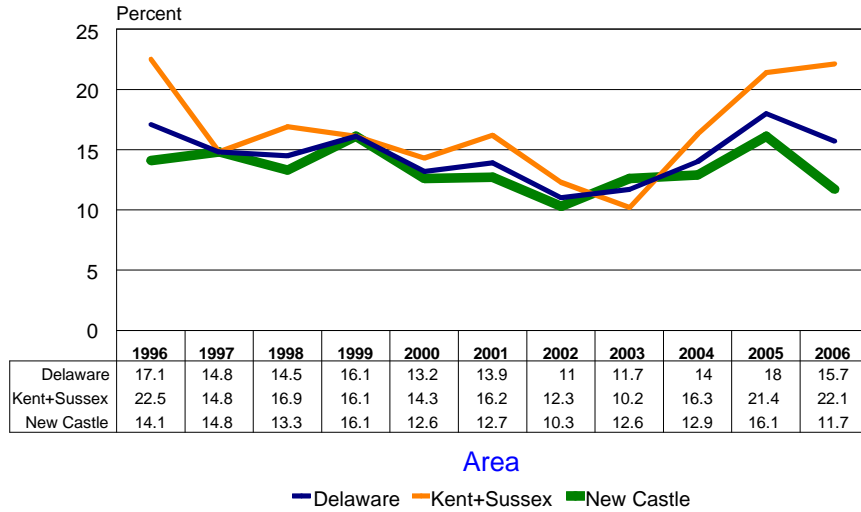
Source: Center for Applied Demography and Survey Research, University of Delaware

Percent Without Health Insurance by Area



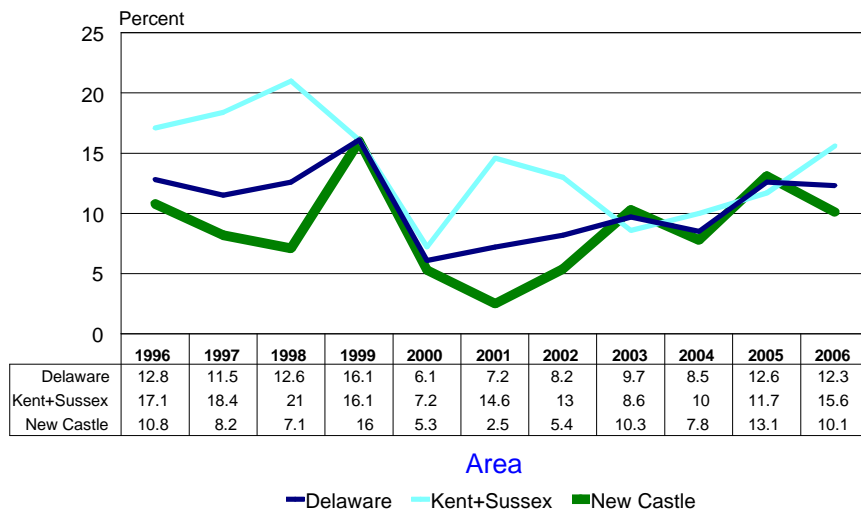
Source: Center for Applied Demography and Survey Research, University of Delaware

Percent 18-64 Without Health Insurance by Area



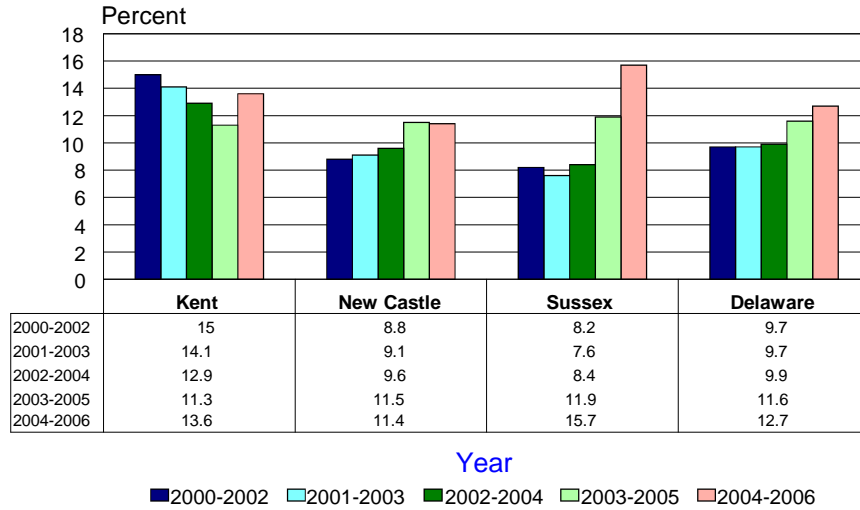
Source: Center for Applied Demography and Survey Research, University of Delaware

Percent 0-17 Without Health Insurance by Area



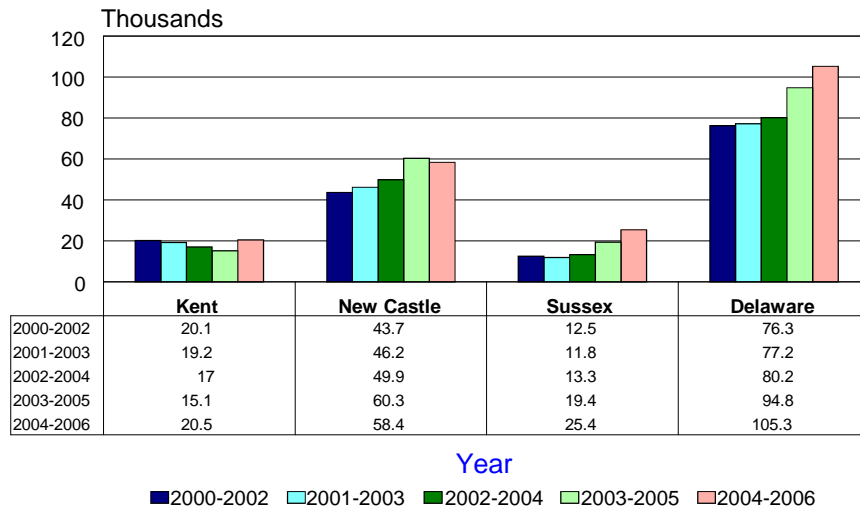
DelawareSource: Center for Applied Demography and Survey Research, University of Delaware

Percent Without Health Insurance by County



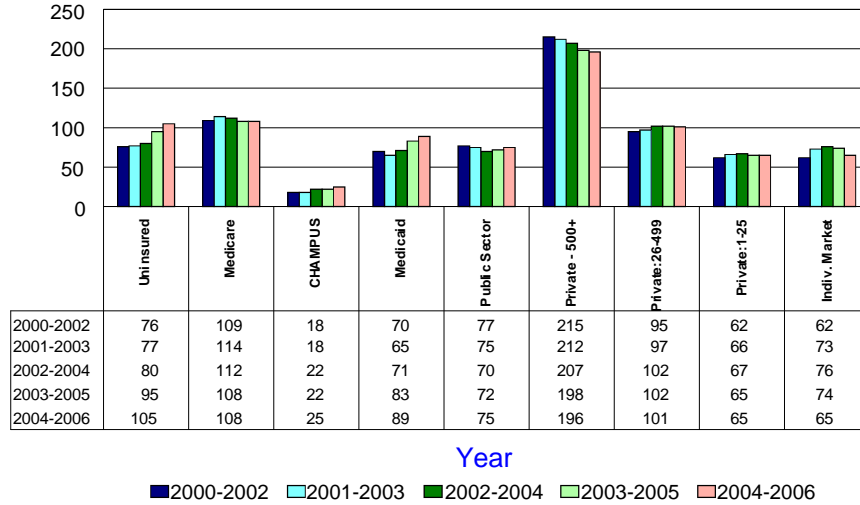
Source: Center for Applied Demography and Survey Research, University of Delaware

Persons Without Health Insurance by County



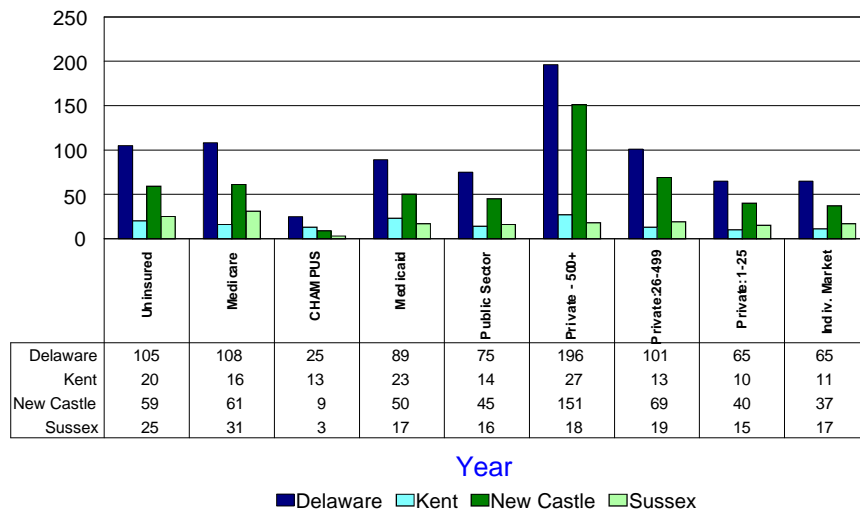
Source: Center for Applied Demography and Survey Research, University of Delaware

Number of Persons by Source of Insurance



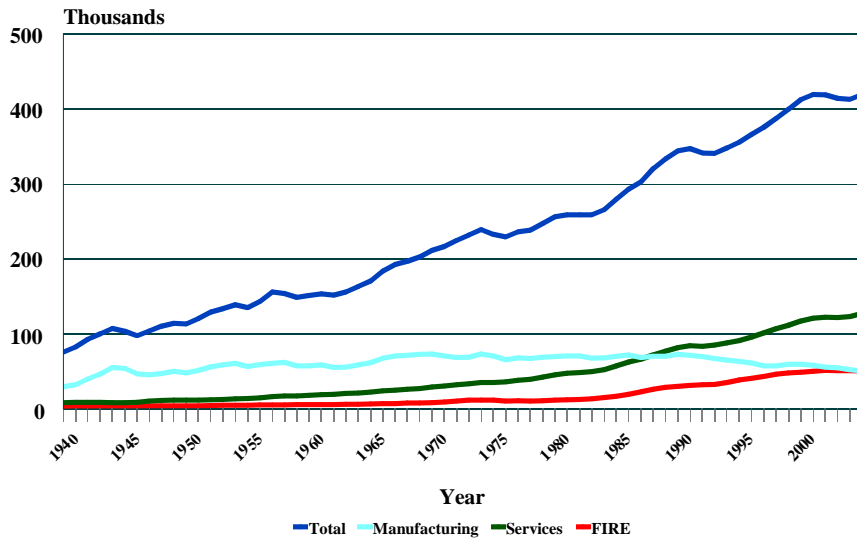
Source: Center for Applied Demography and Survey Research, University of Delaware

Number of Persons by Source of Insurance



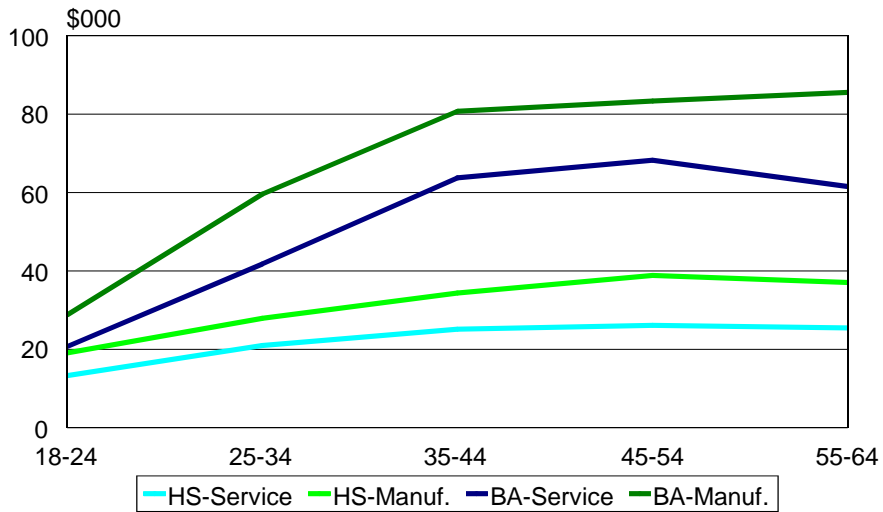
Source: Center for Applied Demography and Survey Research, University of Delaware

Delaware Non-Agricultural Employment 1939-2005



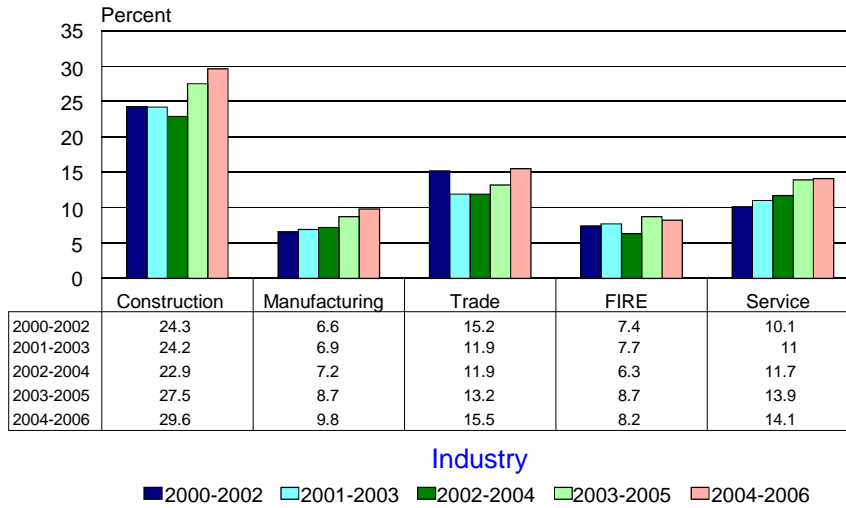
Source: Center for Applied Demography and Survey Research, University of Delaware

Average Yearly Earnings by Sector, Age, and Education



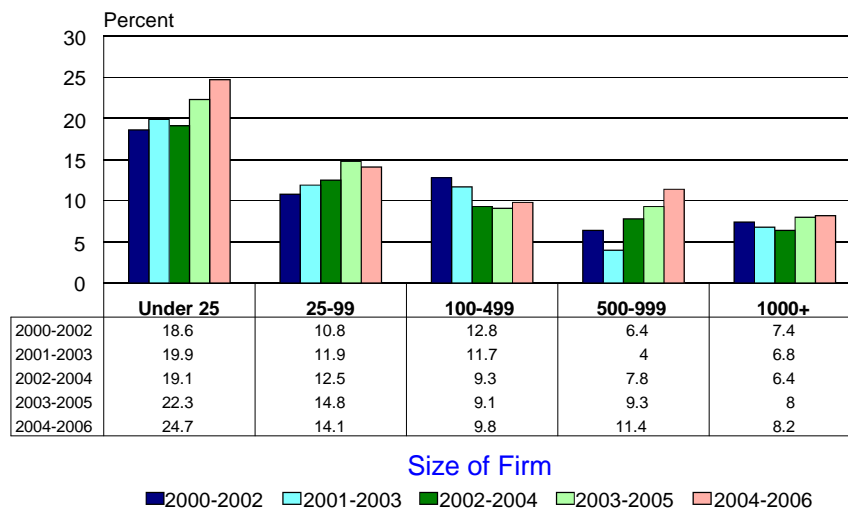
Source: Center for Applied Demography and Survey Research, University of Delaware

Percent without Health Insurance by Industry in Delaware



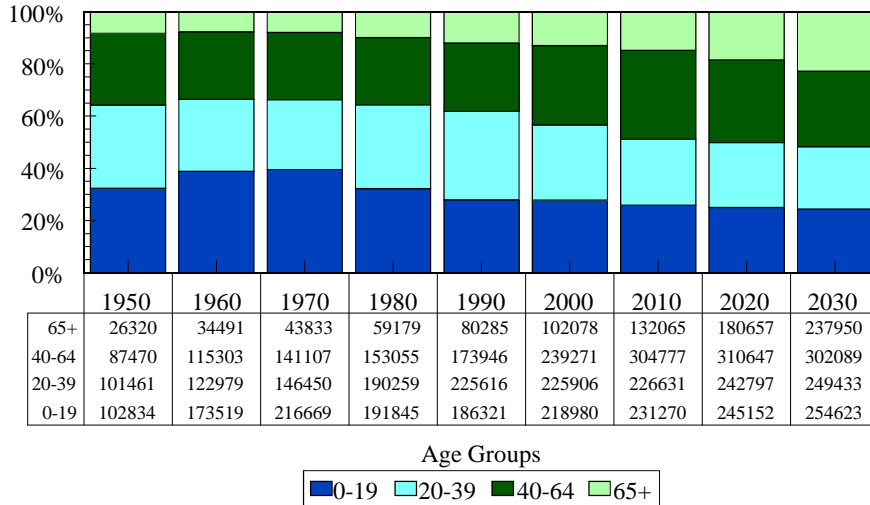
Source: Center for Applied Demography and Survey Research, University of Delaware

Percent without Health Insurance by Size of Firm



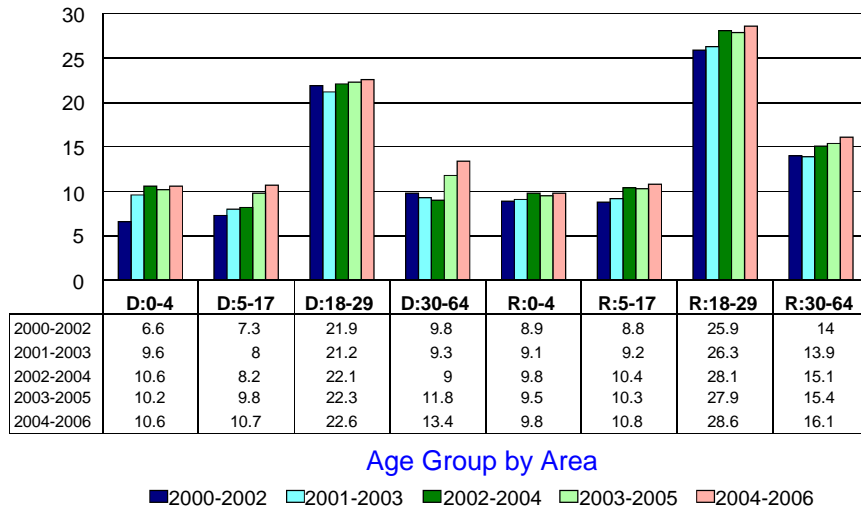
Source: Center for Applied Demography and Survey Research, University of Delaware

Delaware Age Distribution 1950-2030



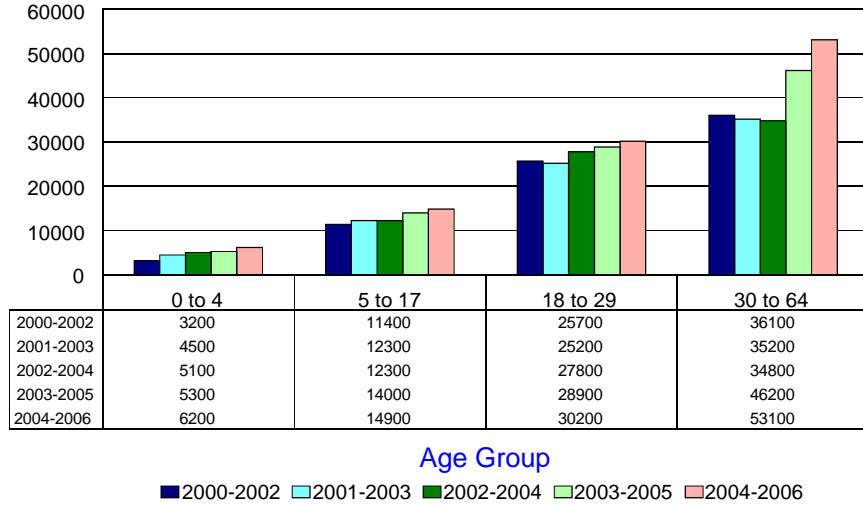
Source: Center for Applied Demography and Survey Research, University of Delaware

Percent Without Health Insurance by Age Group and Area (D:Delaware R:Region)



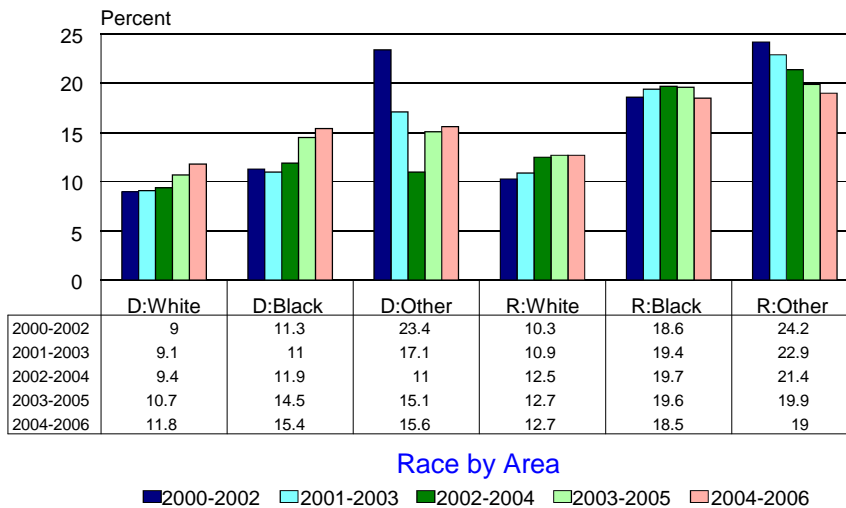
Source: Center for Applied Demography and Survey Research, University of Delaware

Persons Without Health Insurance by Age Group in Delaware



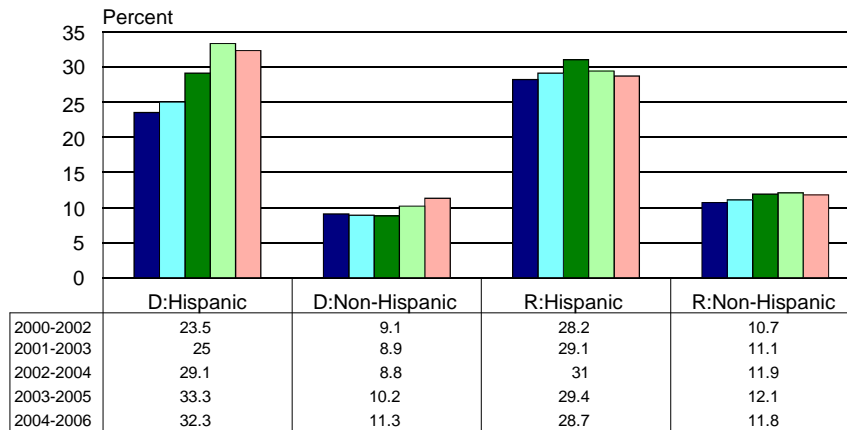
Source: Center for Applied Demography and Survey Research, University of Delaware

Percent without Health Insurance by Race (D:Delaware R:Region)



Source: Center for Applied Demography and Survey Research, University of Delaware

Percent without Health Insurance by Hispanic Origin (D:Delaware R:Region)

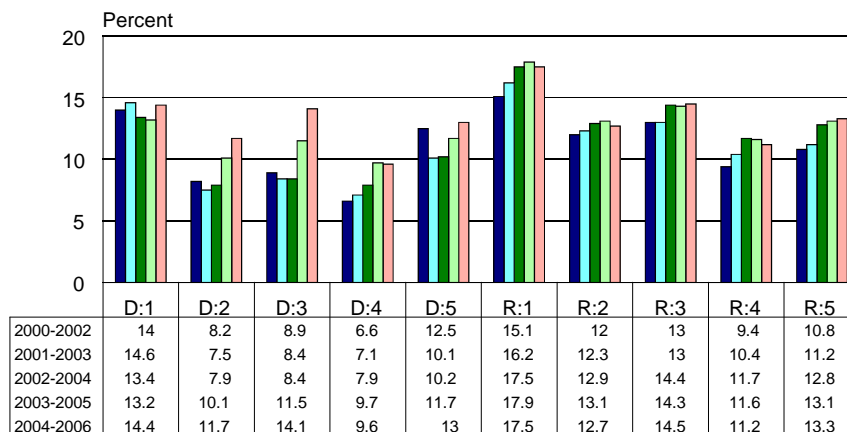


Hispanic Origin by Area

■ 2000-2002
 ■ 2001-2003
 ■ 2002-2004
 ■ 2003-2005
 ■ 2004-2006

Source: Center for Applied Demography and Survey Research, University of Delaware

Percent without Health Insurance by Household Size (D:Delaware R:Region)

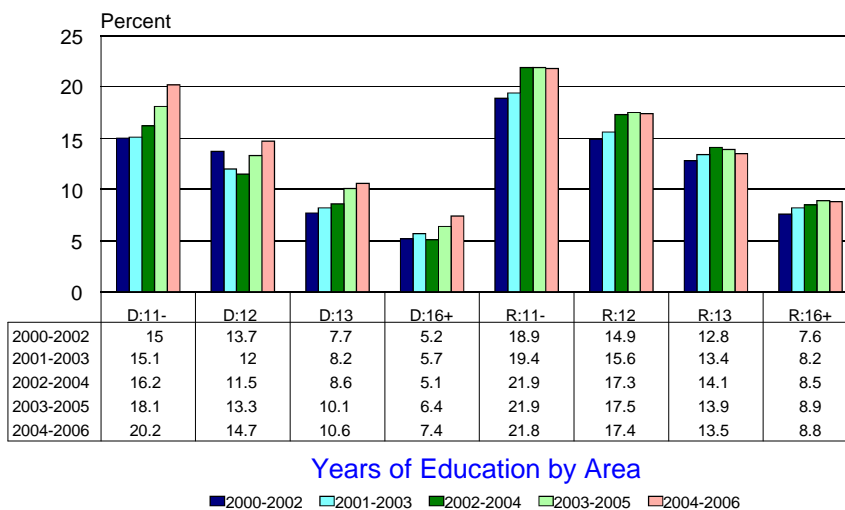


Household Size by Area

■ 2000-2002
 ■ 2001-2003
 ■ 2002-2004
 ■ 2003-2005
 ■ 2004-2006

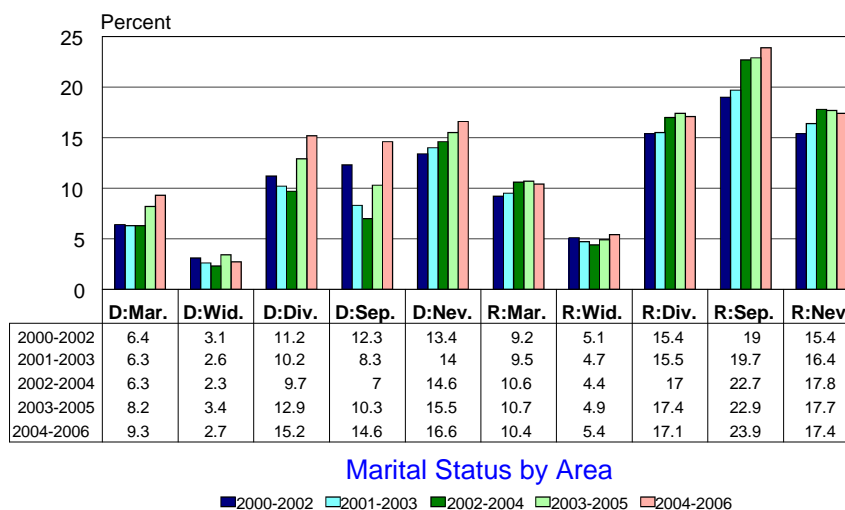
Source: Center for Applied Demography and Survey Research, University of Delaware

Percent without Health Insurance by Years of Education(D:Delaware R:Region)



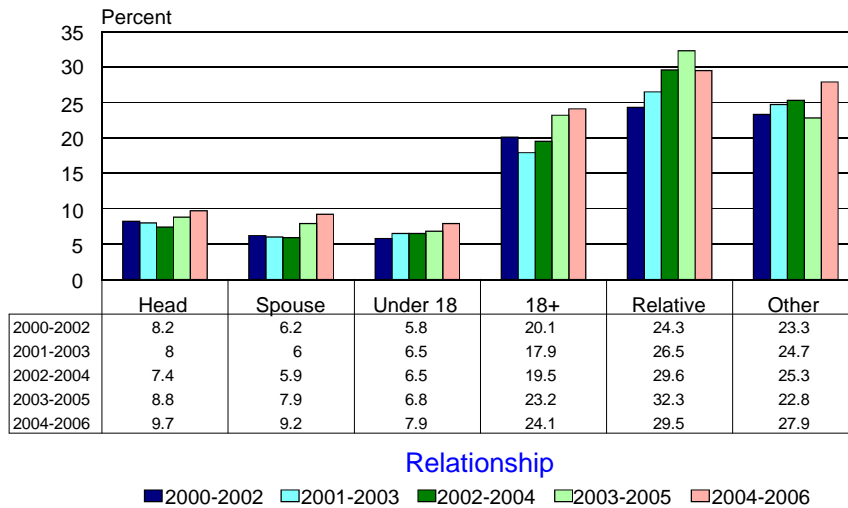
Source: Center for Applied Demography and Survey Research, University of Delaware

Percent Without Health Insurance by Marital Status (D:Delaware R:region)



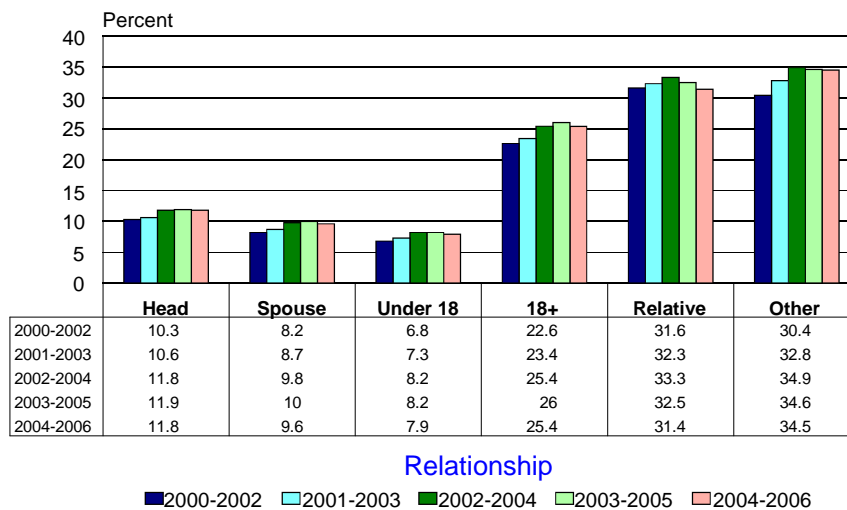
Source: Center for Applied Demography and Survey Research, University of Delaware

Percent without Health Insurance by Relationship in Delaware



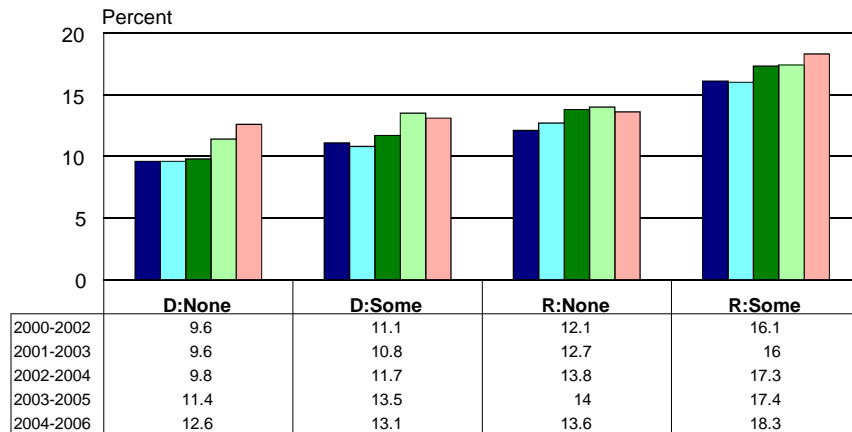
Source: Center for Applied Demography and Survey Research, University of Delaware

Percent without Health Insurance by Relationship in the Region



Source: Center for Applied Demography and Survey Research, University of Delaware

Percent without Health Insurance by Income from Unemployment

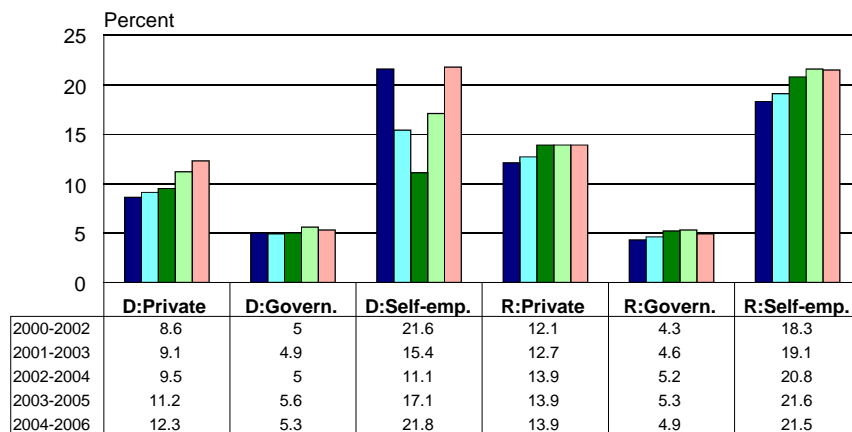


Unemployment Compensation by Area

■ 2000-2002
 ■ 2001-2003
 ■ 2002-2004
 ■ 2003-2005
 ■ 2004-2006

Source: Center for Applied Demography and Survey Research, University of Delaware

Percent without Health Insurance by Class of Worker (D:Delaware R:Region)

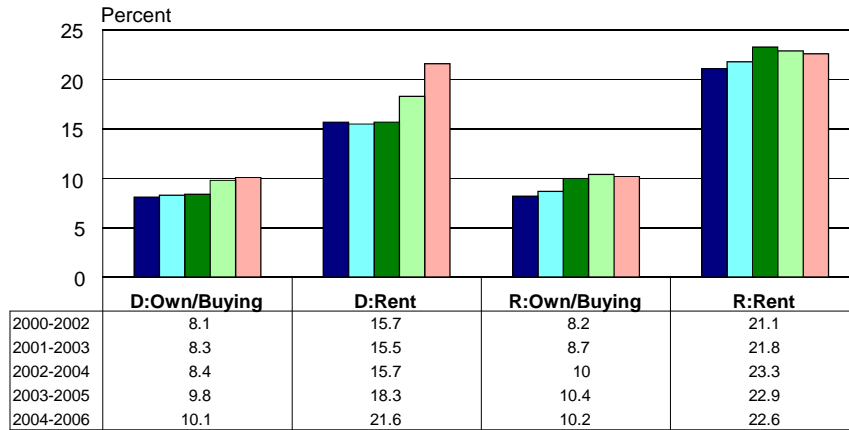


Class of Worker by Area

■ 2000-2002
 ■ 2001-2003
 ■ 2002-2004
 ■ 2003-2005
 ■ 2004-2006

Source: Center for Applied Demography and Survey Research, University of Delaware

Percent without Health Insurance by Home Ownership (D:Delaware R:Region)

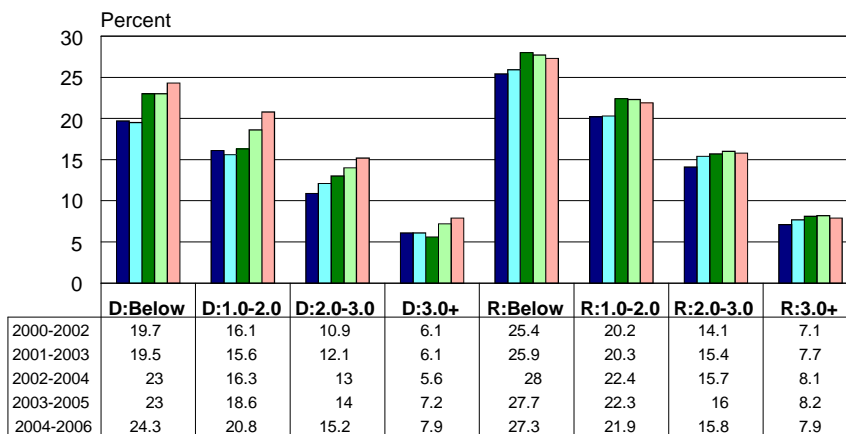


Home Ownership by Area

■ 2000-2002
 ■ 2001-2003
 ■ 2002-2004
 ■ 2003-2005
 ■ 2004-2006

Source: Center for Applied Demography and Survey Research, University of Delaware

Percent Without Health Insurance by Poverty Level (D:Delaware R:Region)

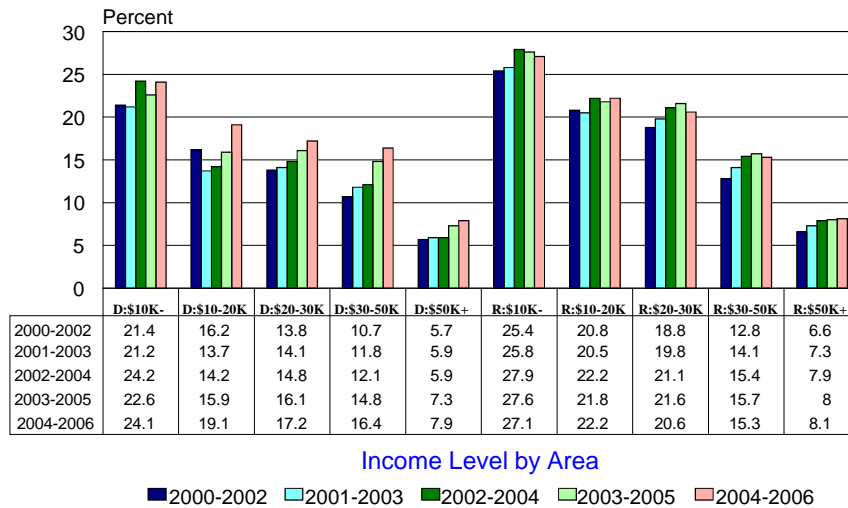


Poverty Level by Area

■ 2000-2002
 ■ 2001-2003
 ■ 2002-2004
 ■ 2003-2005
 ■ 2004-2006

Source: Center for Applied Demography and Survey Research, University of Delaware

Percent Without Health Insurance by Income (D:Delaware R:Region)



Source: Center for Applied Demography and Survey Research, University of Delaware

Who are the 105,000 Uninsured

- 22% are under the age of 19
- 55% are male
- 70% are white
- 16% are Hispanic
- 62% own or are buying their home
- 19% live alone
- 83% are above the poverty line
- 32% with household income over \$50,000
- 68% are working adults
- 7% are self-employed
- 15% are non-citizens

Source: Center for Applied Demography and Survey Research, University of Delaware

Distribution of Persons by Poverty Status by Age and Health Insurance Status				
Poverty	0-18 All	0-18 No HI	19+	19+ No HI
Not Measured	1739	673	0	0
under 0.50	10812	2211	16194	4616
0.50 to 0.74	7149	1298	12720	3156
0.75 to 0.99	7875	1237	15729	4156
1.00 to 1.24	9913	1893	19606	4547
1.25 to 1.49	10014	1793	18298	3677
1.50 to 1.74	9510	1306	24617	4805
1.75 to 1.99	13015	2986	26550	6138
2.00 to 2.49	23670	2906	58873	10736
2.50 to 2.99	19326	1624	54049	8552
3.00 to 3.49	14758	518	47322	6397
3.50 to 3.99	15121	1579	48289	4874
4.00 to 4.49	14174	917	37799	3163
4.50 to 4.99	10623	270	36540	3318
5.00 & over	41517	1468	204475	14468
Total	209215	22681	621060	82603

Source: Center for Applied Demography and Survey Research, University of Delaware
Current Population Survey 2004-2006

Characteristics of the Uninsured and Program Eligibility 2004-2006						
Characteristics	Estimate	Medicaid	CHIP	Employer	Employer+Govt.	Unknown
0-18, Foster Child	673	X				
0-18, 0-100% poverty	4747	X				
0-18, 100-200% poverty	7978		X			
0-18, 200%+ poverty	9282					X
19-34,0-100% poverty, not full-time	4158	X				
19-34,0-100% poverty, works full-time	2320	X				
19-34,100-200% poverty, not full-time	4603					X
19-34,100-200%+ poverty, works full-time	5387				X	
19-34,200%+ poverty, not full-time	8599					X
19-34,200%+ poverty, works full-time	14527			X		
35-49,0-100% poverty, not full-time	1993	X				
35-49,0-100% poverty, works full-time	1616	X				
35-49,100-200% poverty, not full-time	3315					X
35-49,100-200% poverty, works full-time	2896				X	
35-49, 200%+ poverty, not full-time	5666					X
35-49, 200%+ poverty, works full-time	7701			X		
50-64,0-100% poverty, not full-time	1529	X				
50-64,0-100% poverty, works full-time	311	X				
50-64,100-200% poverty, not full-time	1759					X
50-64,100-200% poverty, works full-time	1054				X	
50-64,200%+ poverty, not full-time	6108					X
50-64, 200%+ poverty, works full-time	8064			X		
Total	104286	17348	7978	30292	9337	39331
	100.00%	16.63%	7.65%	29.05%	8.95%	37.71%
65+ uninsured	996					
All uninsured	105283					