



Weekly Influenza Report Week 33 (08/16/09-08/22/09)

National Synopsis: Seasonal

Synopsis: During week 33 (August 16-22, 2009), influenza activity remained stable or continued to decline in most areas of the U.S. However, activity appears to be increasing in the Southeast. A total of 8,843 hospitalizations and 556 deaths associated with 2009 influenza A (H1N1) viruses have been reported to CDC an increase from 7,983 hospitalizations and 522 deaths from the prior week.

- During week 33:
 - 804 (18.0%) specimens tested by U.S. World Health Organization (WHO) and National Respiratory and Enteric Virus Surveillance System (NREVSS) collaborating laboratories and reported to CDC/Influenza Division were positive for influenza.
 - 99% of all subtyped influenza A viruses being reported to CDC were 2009 influenza A (H1N1) viruses.
 - The proportion of deaths attributed to pneumonia and influenza (P&I) was below the epidemic threshold.
 - Five influenza-associated pediatric deaths were reported and all were associated with a 2009 influenza A (H1N1) virus infection.
 - The proportion of outpatient visits for influenza-like illness (ILI) was below the national baseline. Region IV reported ILI above their region-specific baseline.
 - Two states and Puerto Rico reported geographically widespread influenza activity, 13 states reported regional influenza activity, 10 states and the District of Columbia reported local influenza activity, 24 states reported sporadic influenza activity, one state reported no influenza activity, and Guam and the U.S. Virgin Islands did not report.

DELAWARE INFLUENZA SURVEILLANCE:

Total Laboratory Confirmed Cases of Seasonal Influenza: 767

Influenza A: 481

Influenza B: 284 **

Influenza A&B: 2

Counties:

- **New Castle – 347**
- **Kent – 248**
- **Sussex – 172**

Age Range: 13 days – 94 yrs

Deaths: 1 reported in week 13

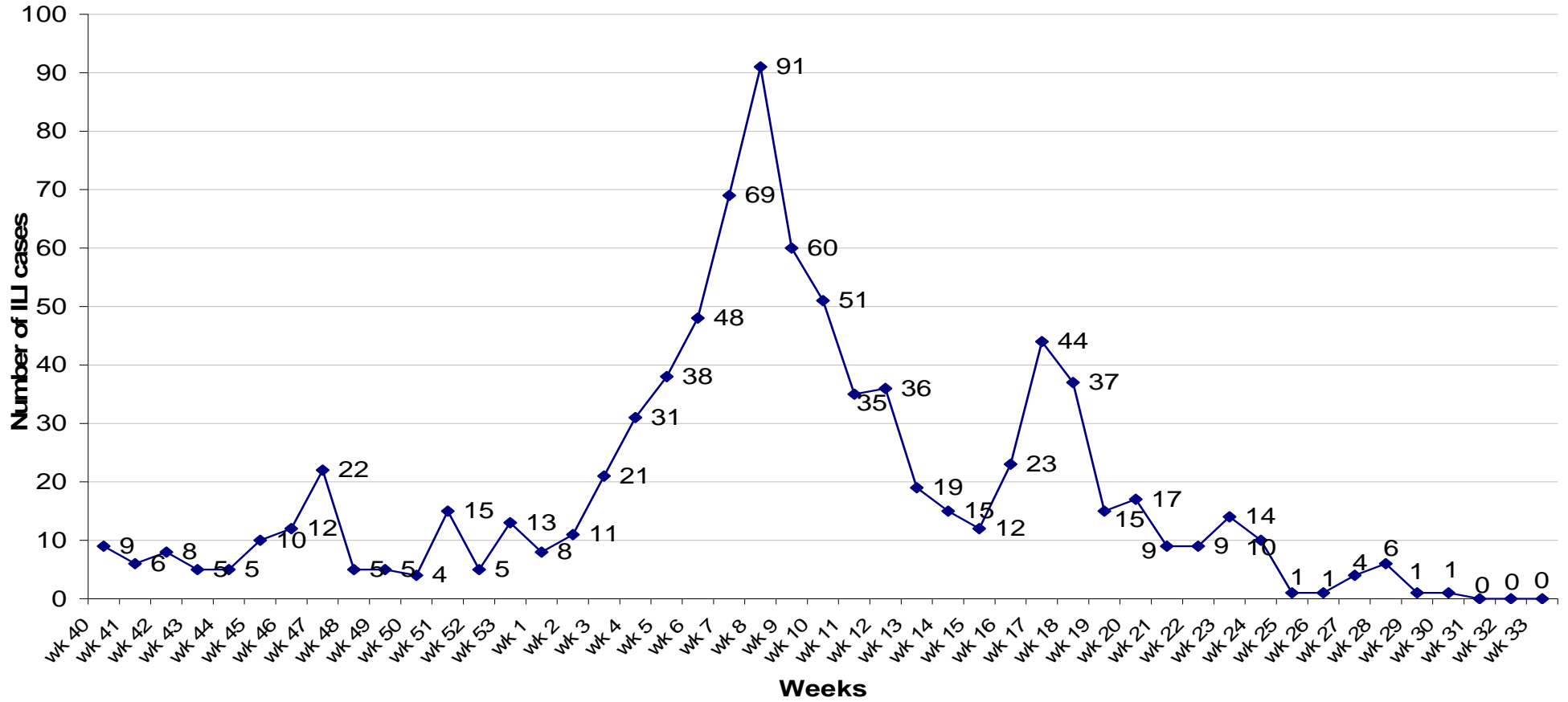
Total Unconfirmed Cases: 136

Influenza Activity for Week 33: Sporadic

**** NOTE:** DPH Laboratory ceased testing of Influenza B specimens May 3, 2009. The data provided above represents testing performed prior to May 3, 2009.

- ➔ **No Activity:** No laboratory-confirmed cases of influenza and no reported increase in the number of cases of ILI.
- ➔ **Sporadic:** Small numbers or isolated cases of laboratory-confirmed influenza cases or a single laboratory-confirmed influenza outbreak has been reported, but there is no increase in cases of ILI.
- ➔ **Local:** Outbreaks of influenza or increases in ILI cases and recent laboratory-confirmed influenza in a single region of the state.
- ➔ **Regional:** Outbreaks of influenza or increases in ILI and recent laboratory confirmed influenza in at least 2 but less than half the regions of the state. (This level of activity does not apply for small states with 4 or fewer regions.)
- ➔ **Widespread:** Outbreaks of influenza or increases in ILI cases and recent laboratory-confirmed influenza in at least half the regions of the state.

ILI cases reported from Sentinel providers 5 of 12 sentinel providers reporting



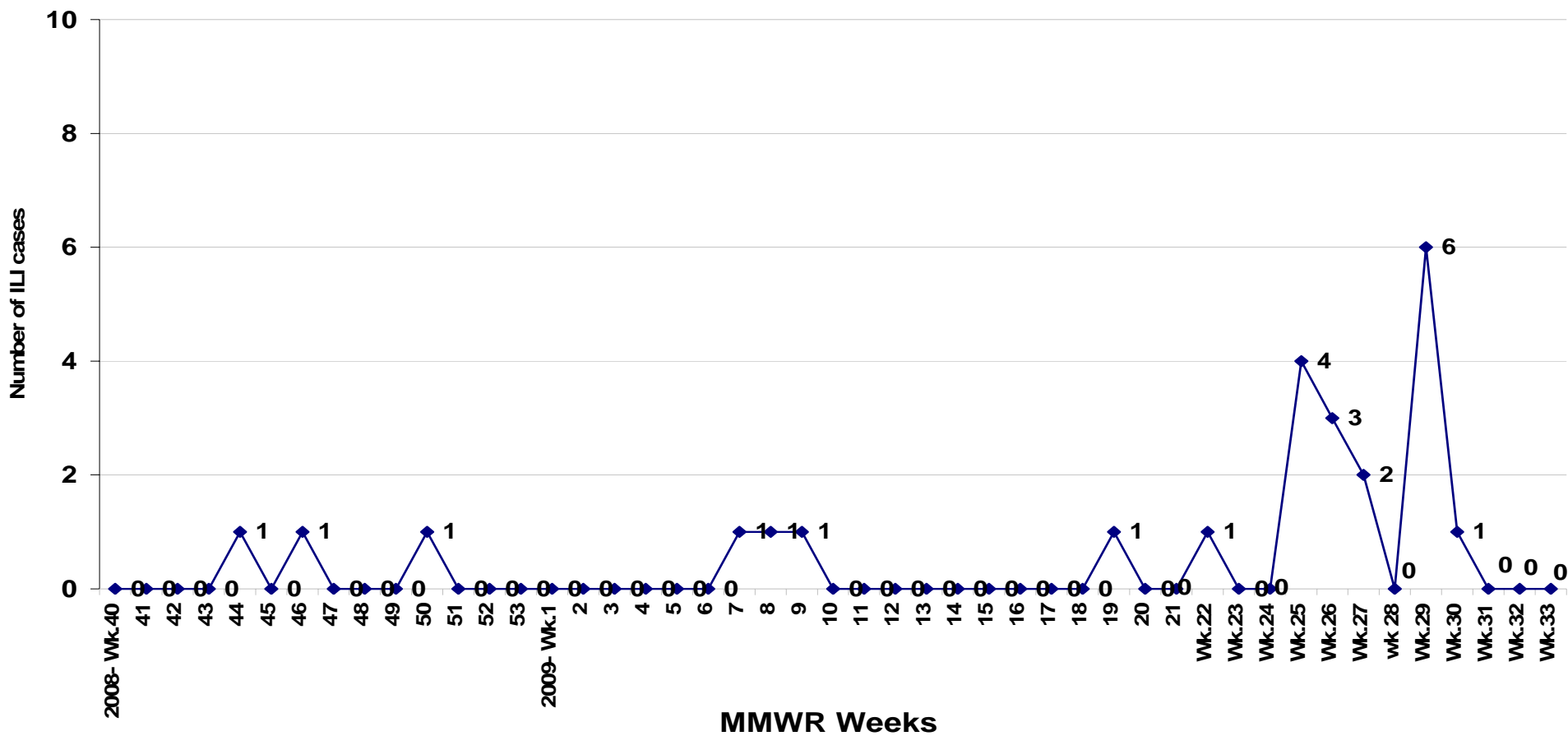
Note: This data is current as of distribution date and is subject to change.

Starting with Week 16: Due to the H1N1 outbreak, ILI may be increased.

ILI cases reported from Corporations/LTCF

4 of 5* sites reporting

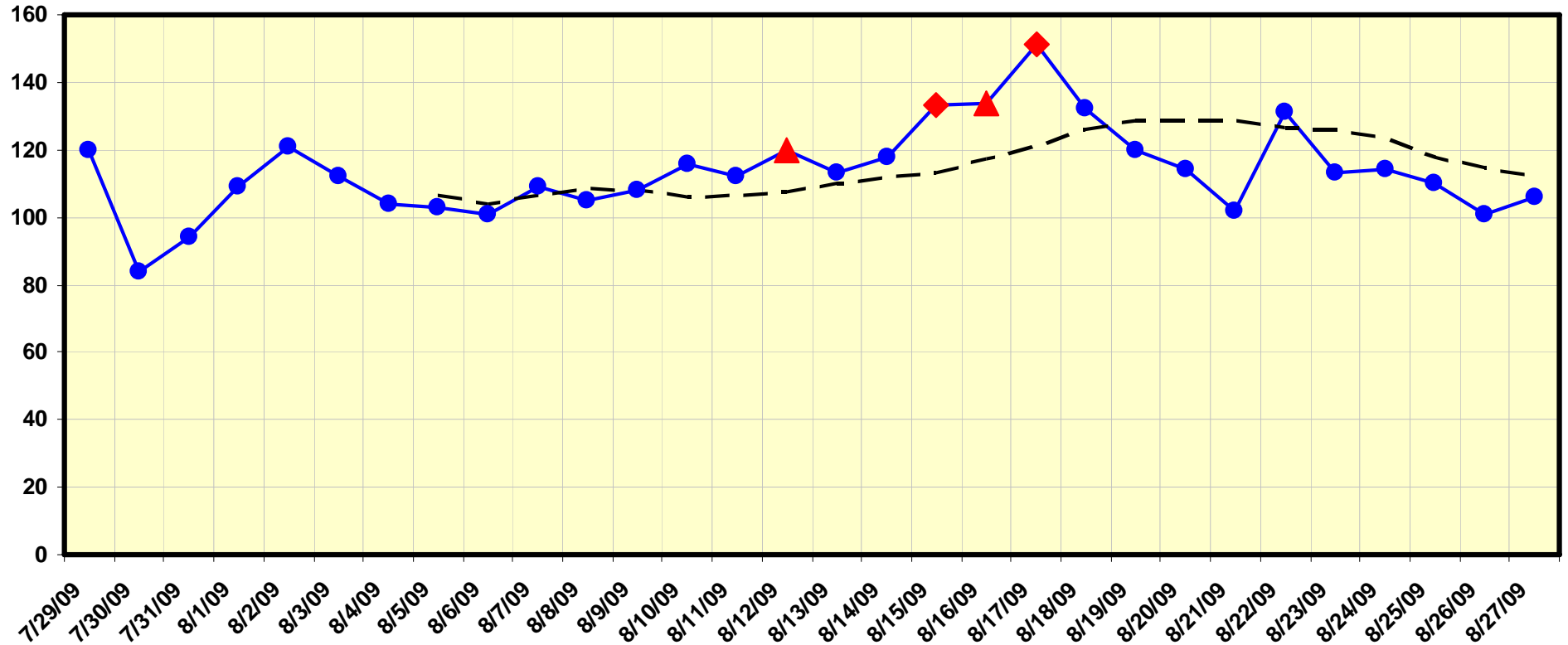
(*one organization that previously reported is no longer participating)



Note: This data is current as of distribution date and is subject to change
Starting with Week 16: Due to the H1N1 outbreak, ILI may be increased.

Hospital Respiratory Chief Compliant Surveillance Data
5 of 5 Hospitals
(Beebe, Christiana Care, Kent, Milford, Wilmington)

Respiratory

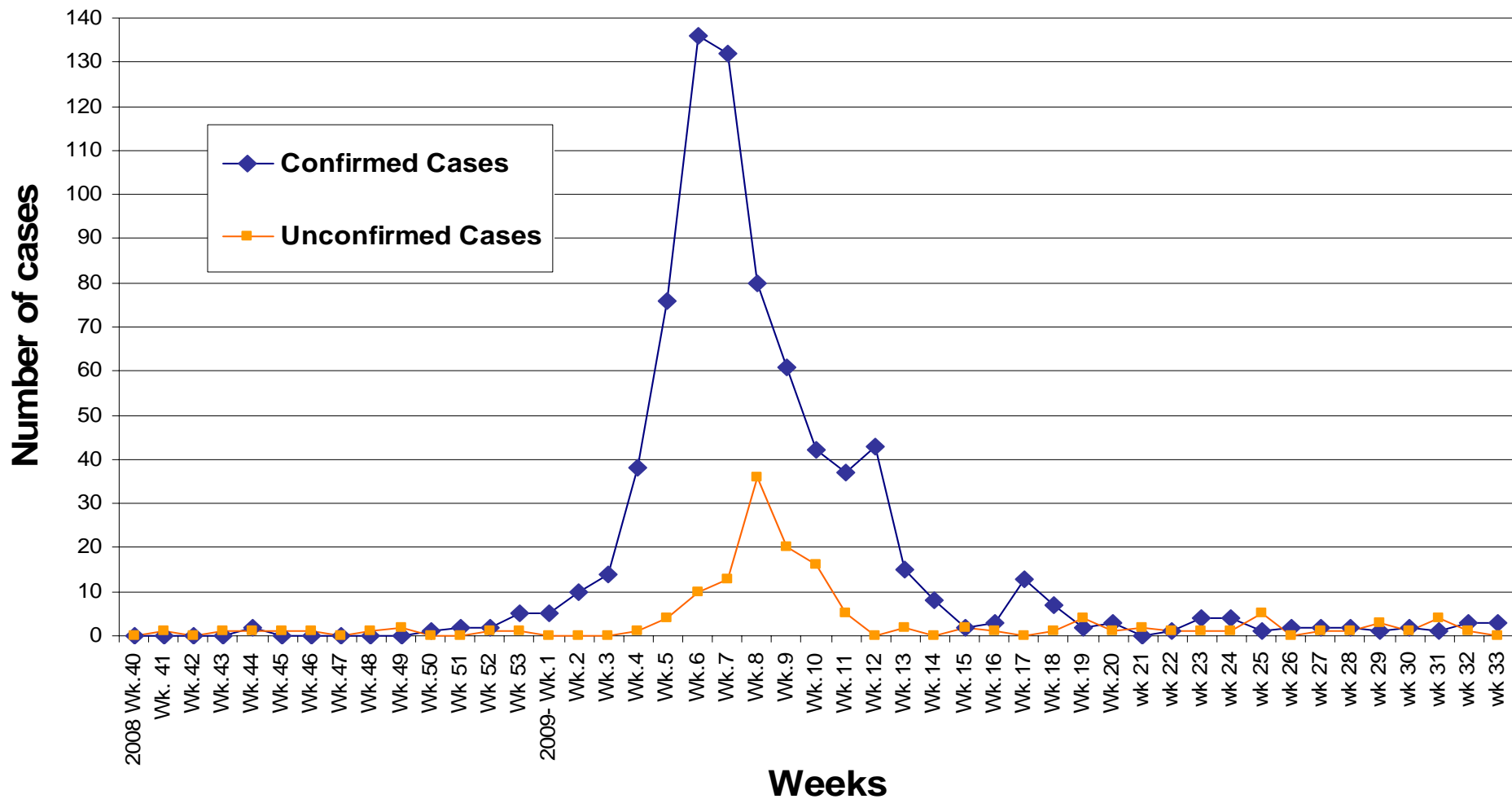


- - - Avg Last 7 Intervals

Cusum Flags: C1=Mild Sensitivity C2=Moderate Sensitivity C3=Ultra Sensitivity

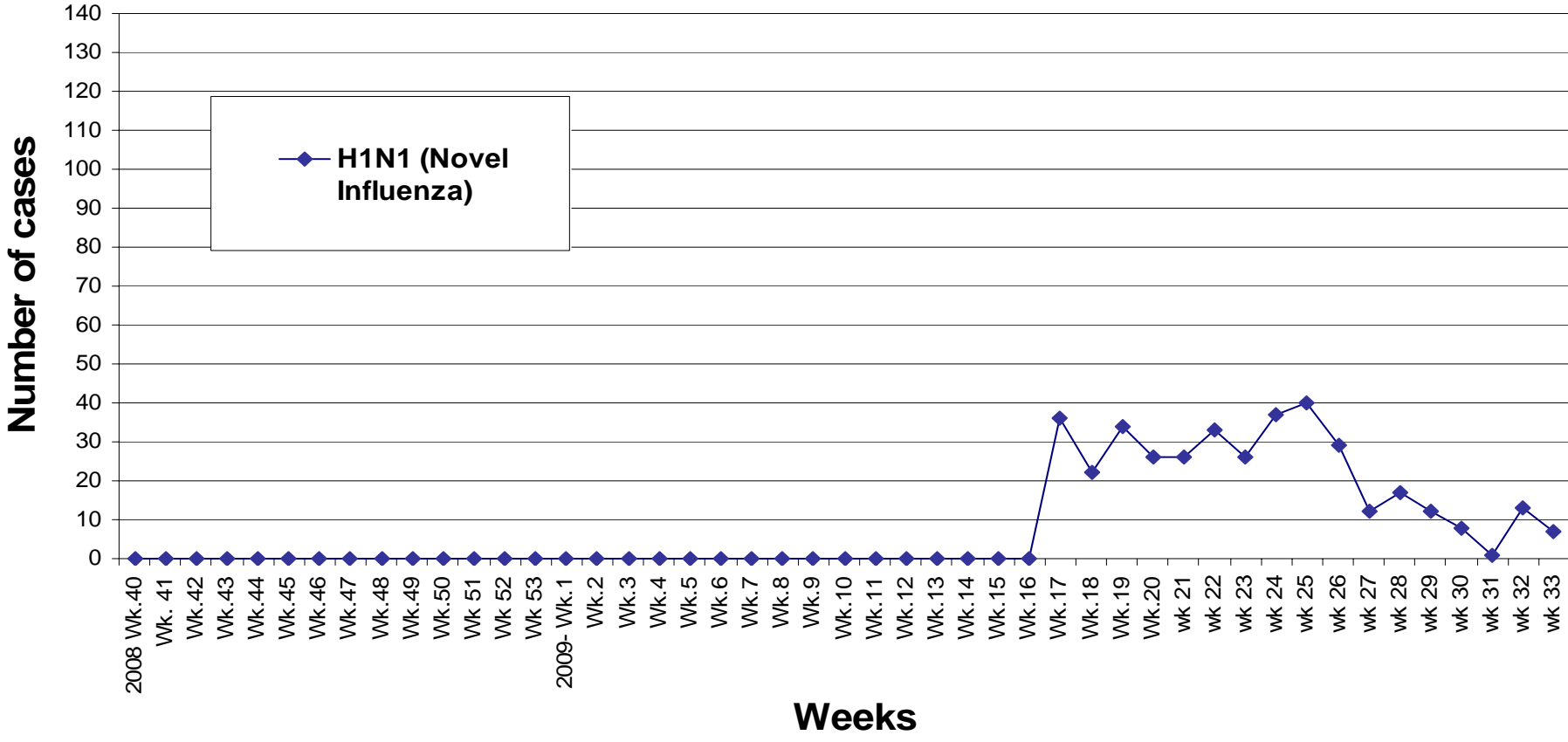
=C1
 =C1C3
▲ =C2C3
 =C3
◆ =C1C2C3

2008-2009 Influenza Seasons Confirmed and Unconfirmed Seasonal Influenza



***NOTE: Confirmed cases: PCR (Polymerase Chain Reaction) positive or Influenza culture positive.
Unconfirmed cases: Rapid assay positive, not confirmed with PCR or culture.**

**2008-2009 Influenza seasons
Confirmed H1N1 Novel Influenza**



****NOTE: H1N1 (Novel Influenza): PCR (Polymerase Chain Reaction) positive**