



## Weekly Influenza Report Week 34 (08/23/09-08/29/09)

### National Synopsis: Seasonal

**Synopsis:** During week 34 (August 23-29, 2009), influenza activity increased in the United States.

- Since mid-April to August 30, 2009, a total of 9,079 hospitalizations and 593 deaths associated with 2009 influenza A (H1N1) viruses have been reported to CDC an increase from 8,843 hospitalizations and 556 deaths from the prior week.
- During week 34:
  - 1,109 (17.3%) specimens tested by U.S. World Health Organization (WHO) and National Respiratory and Enteric Virus Surveillance System (NREVSS) collaborating laboratories and reported to CDC/Influenza Division were positive for influenza.
  - 97% of all subtyped influenza A viruses being reported to CDC were 2009 influenza A (H1N1) viruses.
  - One human infection with a novel influenza A virus was reported.
  - The proportion of deaths attributed to pneumonia and influenza (P&I) was below the epidemic threshold.
  - One influenza-associated pediatric death was reported and was associated with a 2009 influenza A (H1N1) virus infection.
  - The proportion of outpatient visits for influenza-like illness (ILI) was below the national baseline. Region IV reported ILI above its region-specific baseline.
  - Six states and Puerto Rico reported geographically widespread influenza activity, 13 states reported regional influenza activity, 10 states and the District of Columbia reported local influenza activity, 19 states reported sporadic influenza activity, two states reported no influenza activity, and Guam and the U.S. Virgin Islands did not report.

## DELAWARE INFLUENZA SURVEILLANCE:

**Total Laboratory Confirmed Cases of Seasonal Influenza: 786**

Influenza A: 481  
Influenza B: 284 \*\*  
Influenza A&B: 2  
Influenza A-H1N1: 19

**Counties:**

- **New Castle** – 352
- **Kent** – 254
- **Sussex** – 180

**Age Range:** 13 days – 94 yrs

**Deaths:** 1 reported in week 13

**Total Unconfirmed Cases:** 136

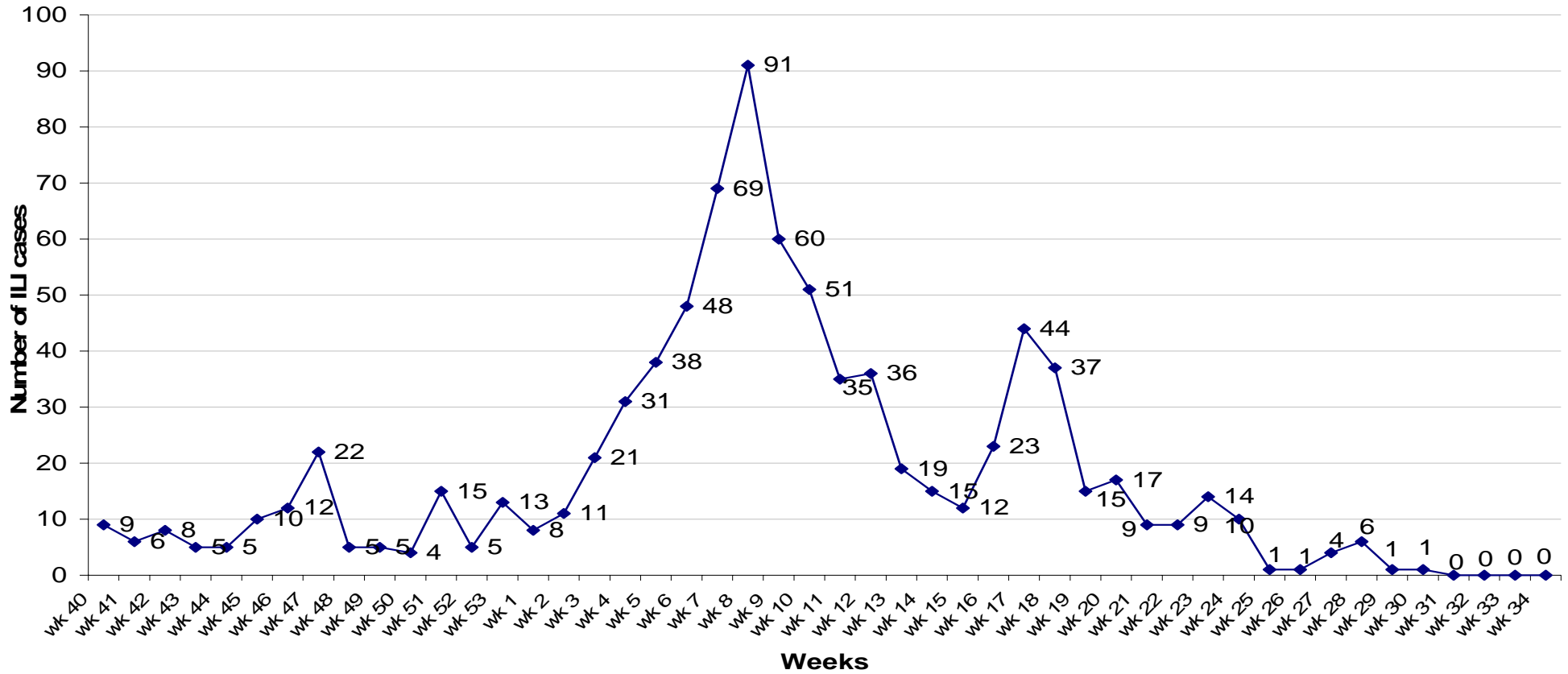
**Influenza Activity for Week 34: Sporadic**

- **No Activity:** No laboratory-confirmed cases of influenza and no reported increase in the number of cases of ILI.
- **Sporadic:** Small numbers or isolated cases of laboratory-confirmed influenza cases or a single laboratory-confirmed influenza outbreak has been reported, but there is no increase in cases of ILI.
- **Local:** Outbreaks of influenza or increases in ILI cases and recent laboratory-confirmed influenza in a single region of the state.
- **Regional:** Outbreaks of influenza or increases in ILI and recent laboratory confirmed influenza in at least 2 but less than half the regions of the state. (This level of activity does not apply for small states with 4 or fewer regions.)
- **Widespread:** Outbreaks of influenza or increases in ILI cases and recent laboratory-confirmed influenza in at least half the regions of the state.

**\*\* NOTE:**

- DPH Laboratory ceased testing of Influenza B specimens May 3, 2009. The data provided above represents testing performed prior to May 3, 2009.
- **For surveillance purposes, effective 8/30/2009, ALL influenza cases (including H1N1) will be reported as “Human Influenza” with a designated subtype. We will no longer be reporting Novel H1N1 and human influenza separately.**

**ILI cases reported from Sentinel providers  
5 of 12 sentinel providers reporting**

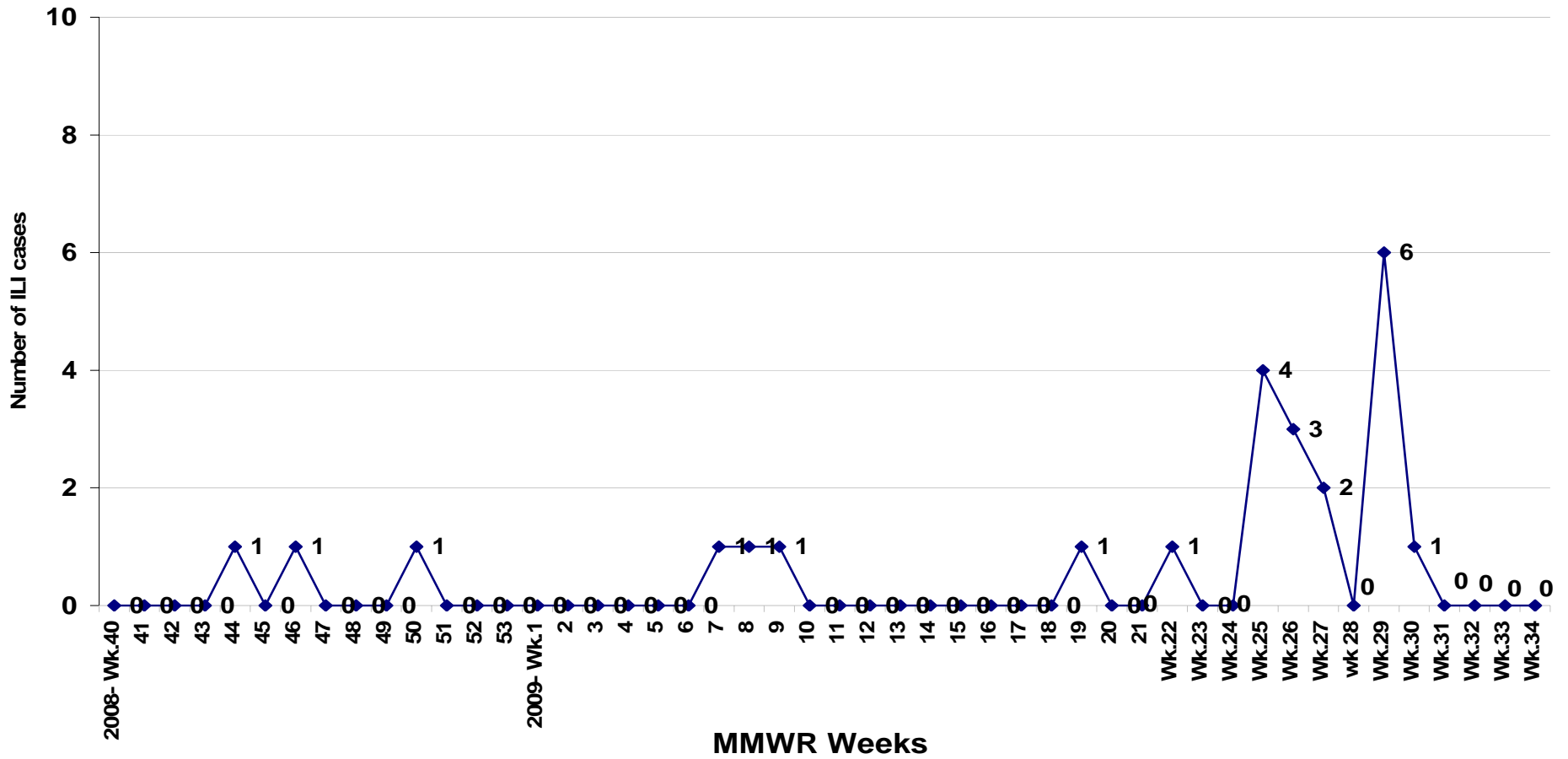


**Note: This data is current as of distribution date and is subject to change.**

**Starting with Week 16: Due to the H1N1 outbreak, ILI may be increased.**

**ILI cases reported from Corporations/LTCF**

4 of 5\* sites reporting  
(\*one organization that previously reported is no longer participating)

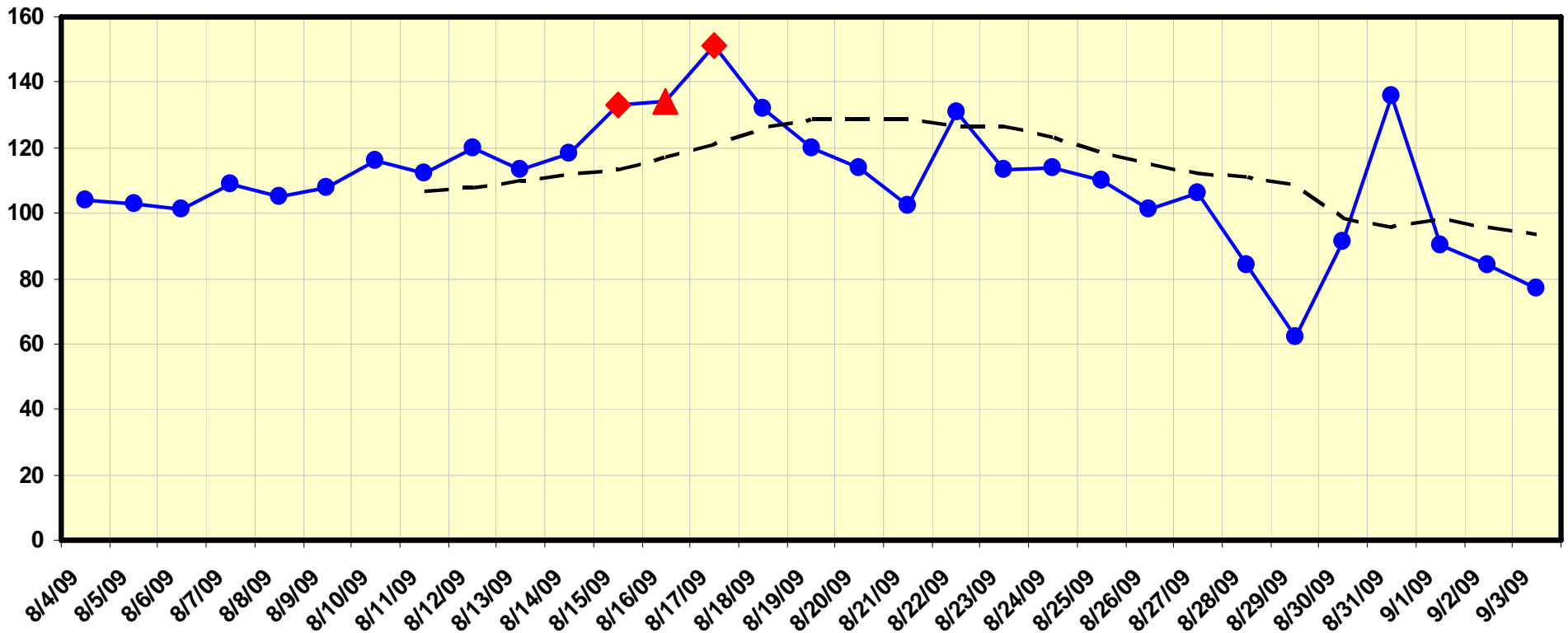


Note: This data is current as of distribution date and is subject to change  
Starting with Week 16: Due to the H1N1 outbreak, ILI may be increased.

**Hospital Respiratory Chief Compliant Surveillance Data**  
**5 of 5 Hospitals**  
**(Beebe, Christiana Care, Kent, Milford, Wilmington)**



Respiratory

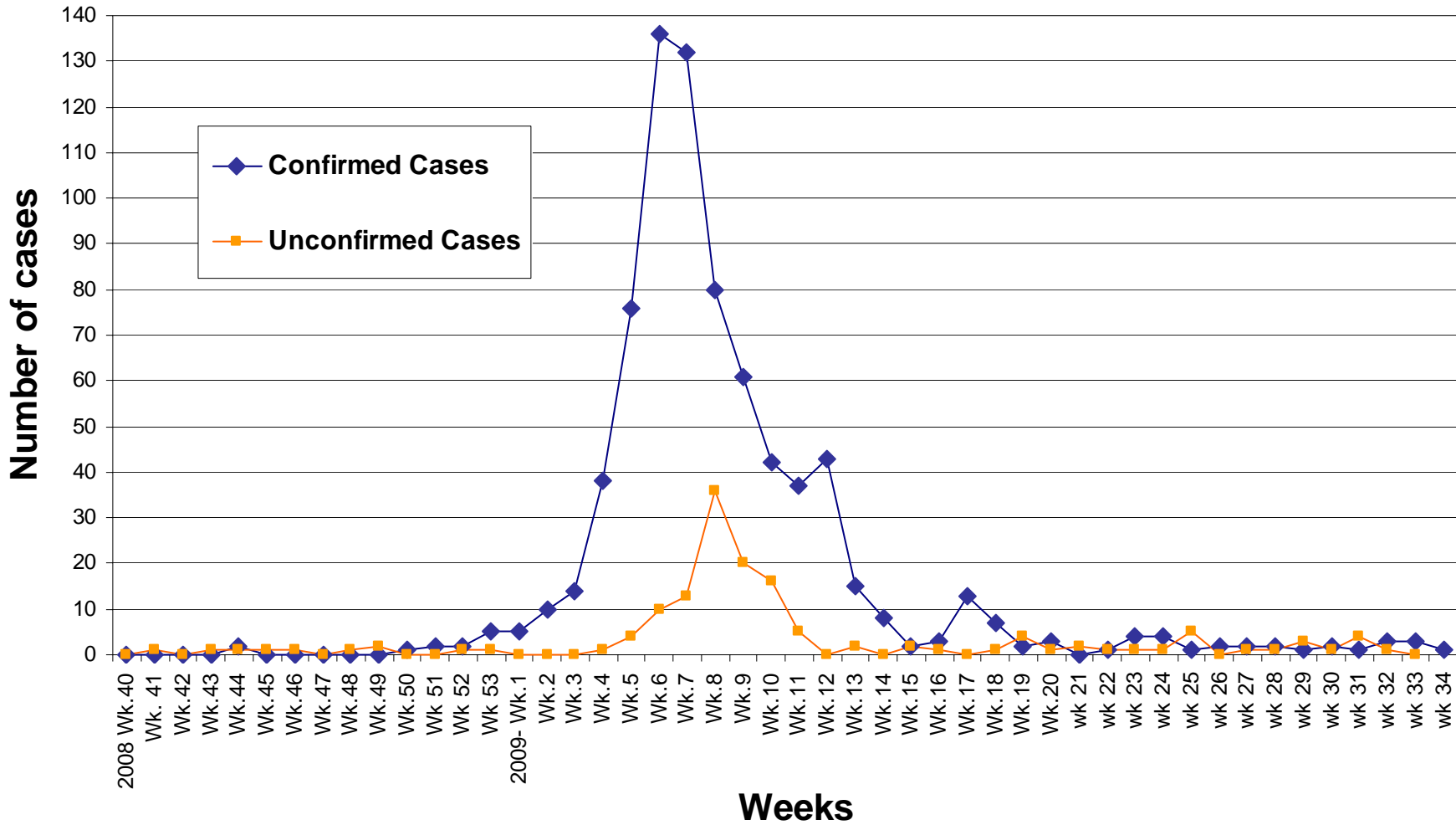


- - - Avg Last 7 Intervals

**Cusum Flags: C1=Mild Sensitivity C2=Moderate Sensitivity C3=Ultra Sensitivity**

□ = C1   
 ■ = C1C3   
 ▲ = C2C3   
 ◇ = C3   
 ◆ = C1C2C3

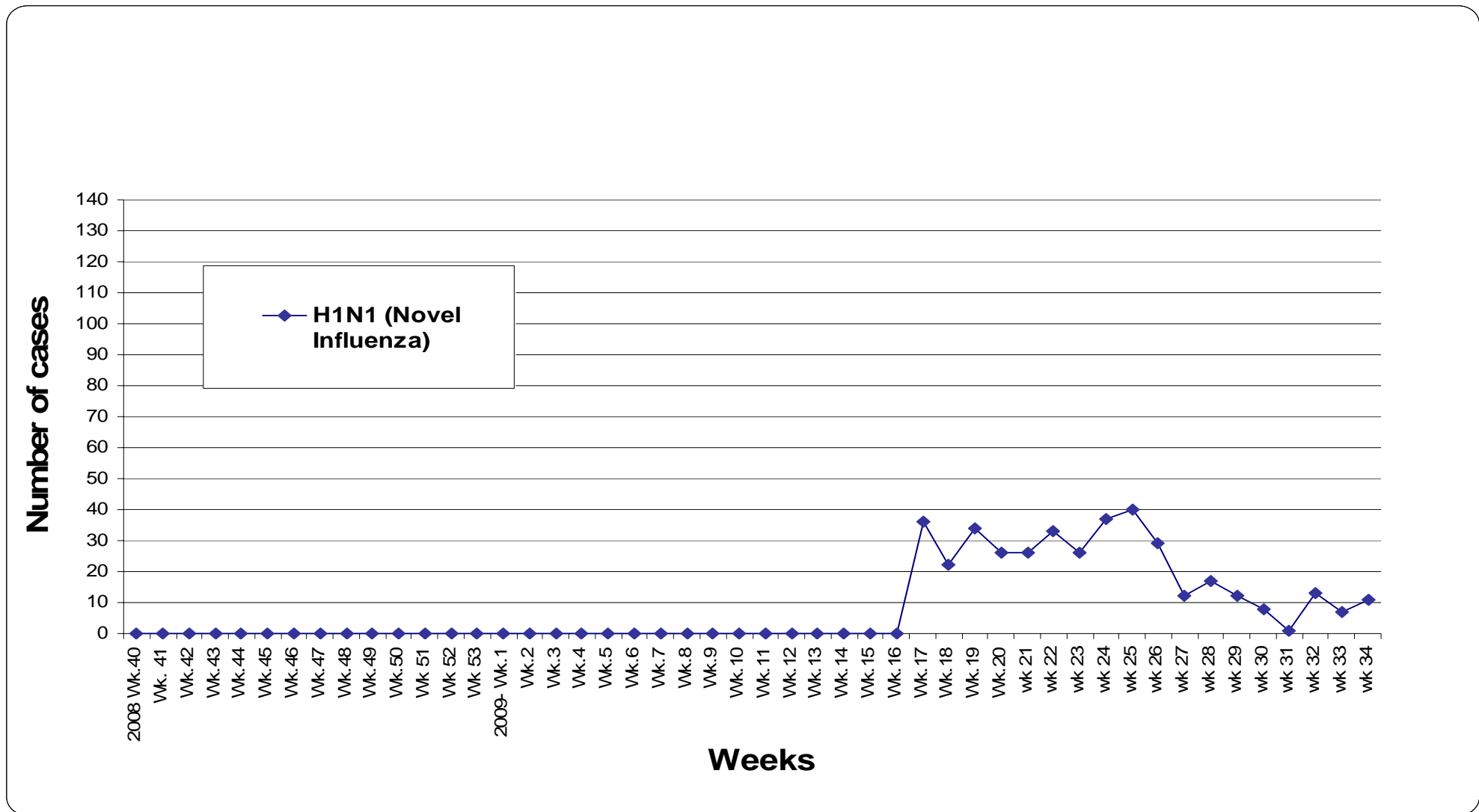
## 2008-2009 Influenza Seasons Confirmed and Unconfirmed Seasonal Influenza



**\*NOTE: Confirmed cases: PCR (Polymerase Chain Reaction) positive or Influenza culture positive.**

Unconfirmed cases: Rapid assay positive, not confirmed with PCR or culture.

### 2008-2009 Influenza seasons Confirmed H1N1 Novel Influenza



**\*\*NOTE: H1N1 (Novel Influenza): PCR (Polymerase Chain Reaction) positive**