

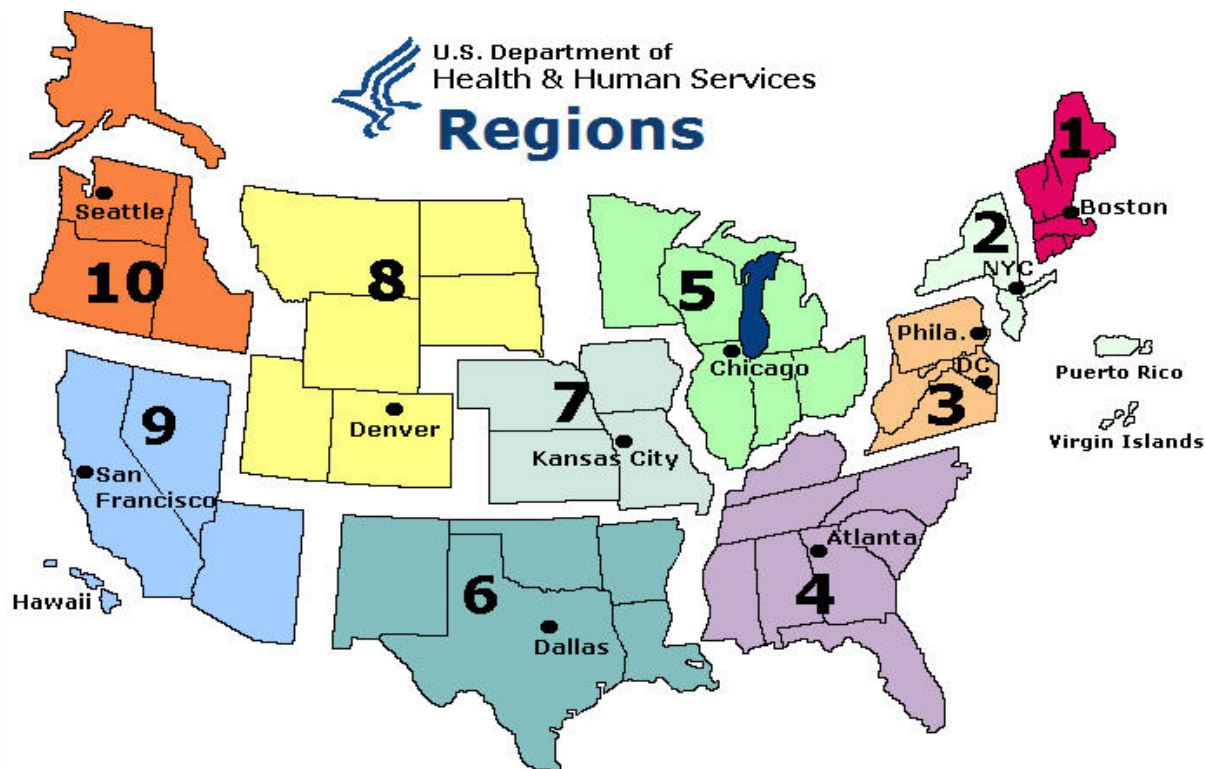


Weekly Influenza Report Week 36 (09/06/09-09/12/09)

National Synopsis: Seasonal:

Synopsis: During week 36 (September 6-12, 2009), influenza activity increased in the U.S.

- 1,378 (18.2%) specimens tested by U.S. World Health Organization (WHO) and National Respiratory and Enteric Virus Surveillance System (NREVSS) collaborating laboratories and reported to CDC/Influenza Division were positive for influenza.
- 99% of all subtyped influenza A viruses being reported to CDC were 2009 influenza A (H1N1) viruses.
- The proportion of deaths attributed to pneumonia and influenza (P&I) was below the epidemic threshold.
- Two influenza-associated pediatric deaths were reported, and both were associated with 2009 influenza A (H1N1) virus infection.
- The proportion of outpatient visits for influenza-like illness (ILI) was above the national baseline. Regions 2, 4, 5, 6, 7, 9, and 10 reported ILI above region-specific baseline levels.
- Twenty-one states reported geographically widespread influenza activity, nine states and Puerto Rico reported regional influenza activity, 11 states and the District of Columbia reported local influenza activity, eight states and Guam reported sporadic influenza activity, one state reported no influenza activity, and the U.S. Virgin Islands did not report.
- The 2009-10 influenza season officially begins October 4, 2009.



-
- **Region III: DE, DC, MD, PA, VA, WV**

DELAWARE INFLUENZA SURVEILLANCE:

Total Laboratory Confirmed Cases of Seasonal Influenza: 1,272

Influenza A: 484
Influenza B: 284 **
Influenza A&B: 2
Influenza A-H1N1: 502 ^a

Counties:

- **New Castle** – 662
- **Kent** – 324
- **Sussex** – 286

Age Range: 13 days – 94 yrs

Deaths: 1 reported in week 13

Total Unconfirmed Cases: 137

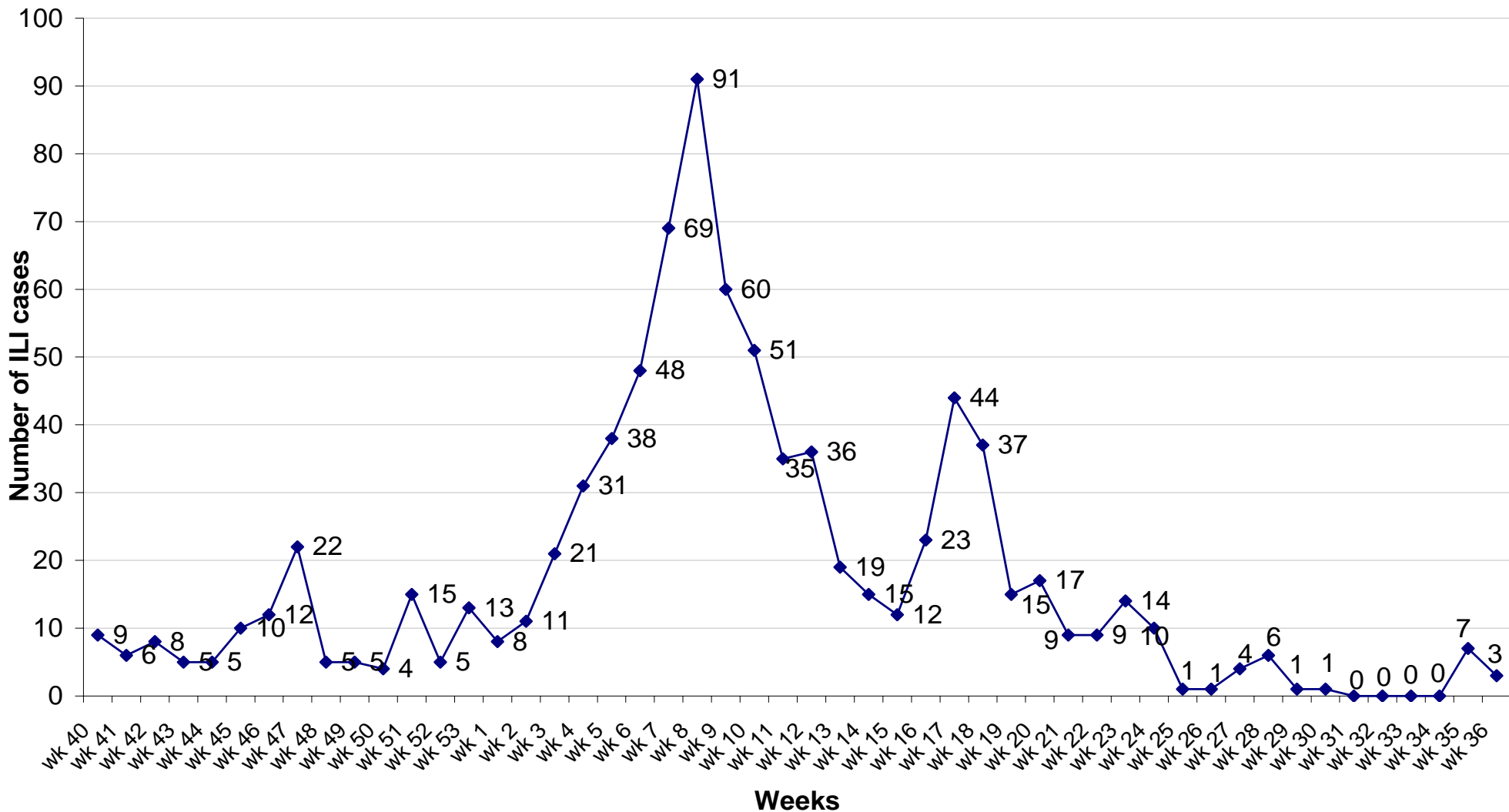
Influenza Activity for Week 36: Sporadic

- ➡ **No Activity:** No laboratory-confirmed cases of influenza and no reported increase in the number of cases of ILI.
- ➡ **Sporadic:** Small numbers or isolated cases of laboratory-confirmed influenza cases or a single laboratory-confirmed influenza outbreak has been reported, but there is no increase in cases of ILI.
- ➡ **Local:** Outbreaks of influenza or increases in ILI cases and recent laboratory-confirmed influenza in a single region of the state.
- ➡ **Regional:** Outbreaks of influenza or increases in ILI and recent laboratory confirmed influenza in at least 2 but less than half the regions of the state. (This level of activity does not apply for small states with 4 or fewer regions.)
- ➡ **Widespread:** Outbreaks of influenza or increases in ILI cases and recent laboratory-confirmed influenza in at least half the regions of the state.

**** NOTE:**

- DPH Laboratory ceased testing of Influenza B specimens May 3, 2009. The data provided above represents testing performed prior to May 3, 2009.
- **For surveillance purposes, effective 8/30/2009, ALL influenza cases (including H1N1) will be reported as “Human Influenza” with a designated subtype. We will no longer be reporting Novel H1N1 and human influenza cases separately.**
- ^a **Influenza A-H1N1: Represents total number of confirmed cases up to date. Despite reporting changes (described above) data for H1N1 will not be reset until the 2009-2010 Influenza Season.**

ILI cases reported from Sentinel providers
5 of 12 sentinel providers reporting

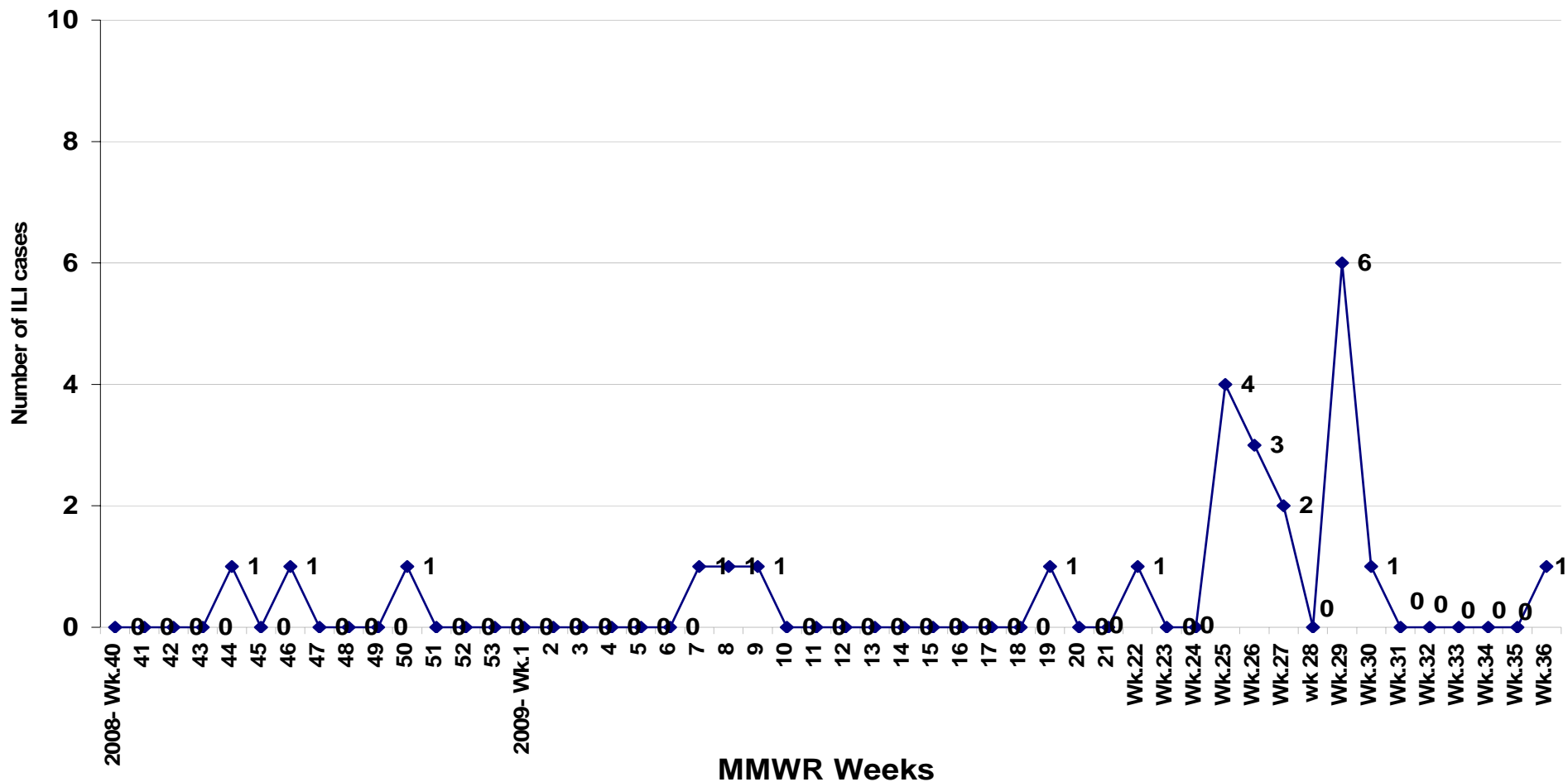


Note: This data is current as of distribution date and is subject to change.
Starting with Week 16: Due to the H1N1 outbreak, ILI may be increased.

ILI cases reported from Corporations/LTCF

4 of 5* sites reporting

(*one organization that previously reported is no longer participating)

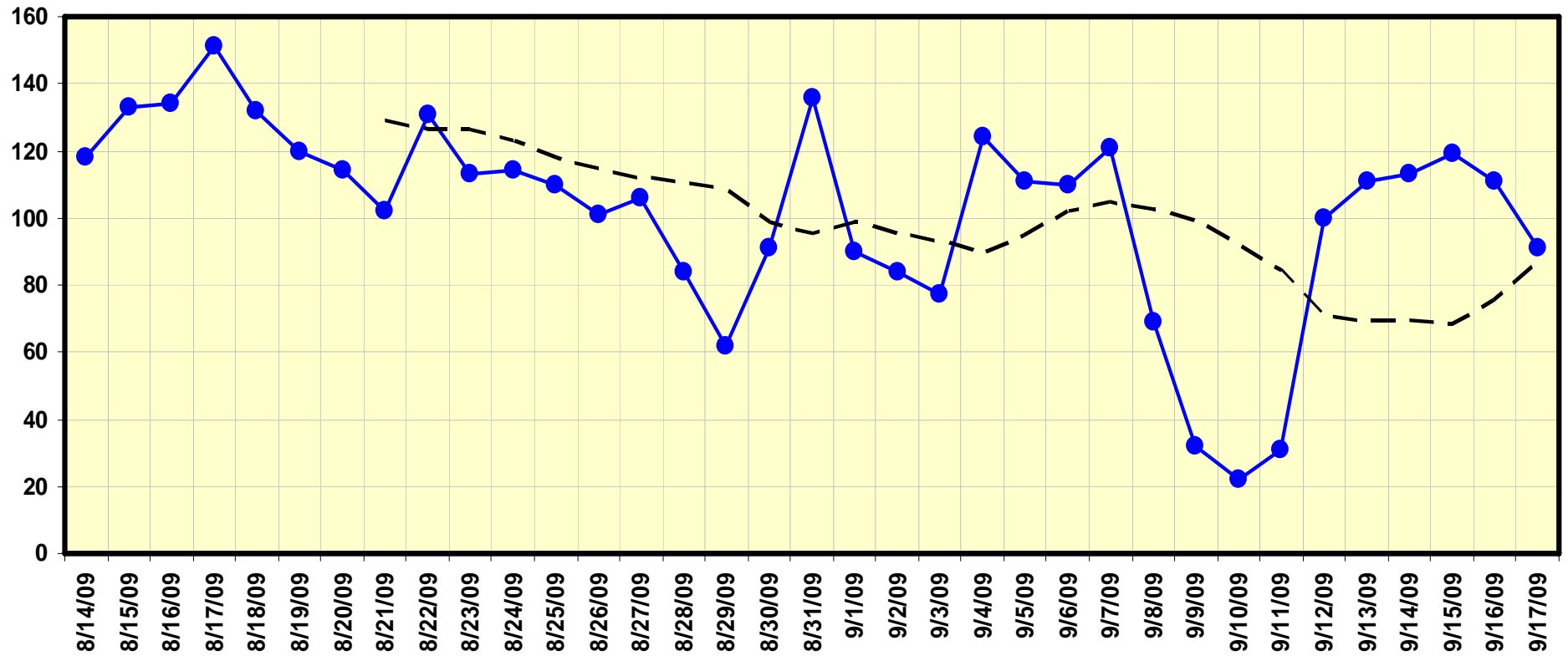


Note: This data is current as of distribution date and is subject to change

Starting with Week 16: Due to the H1N1 outbreak, ILI may be increased.

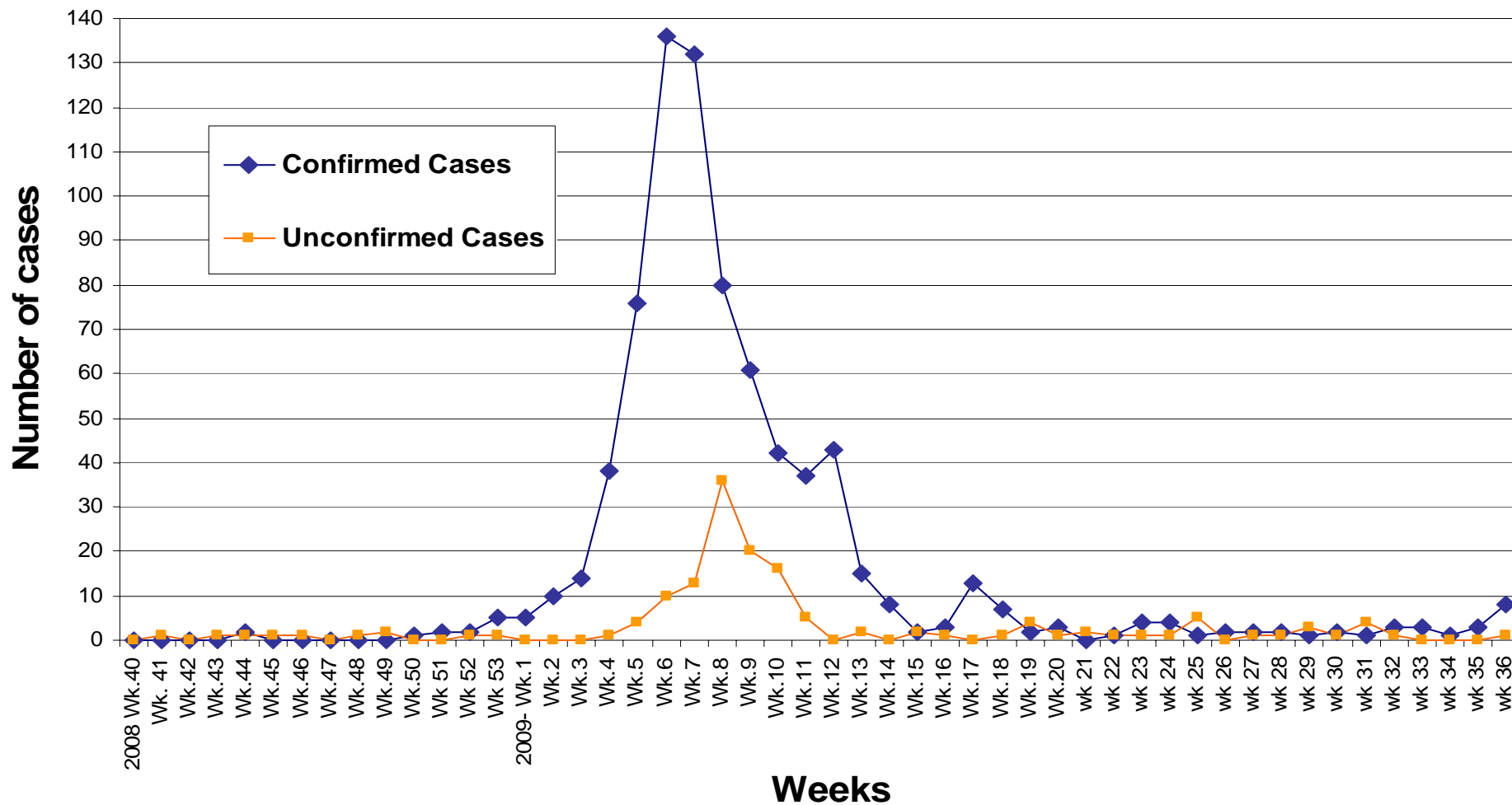
Hospital Respiratory Chief Compliant Surveillance Data
5 of 5 Hospitals
(Beebe, Christiana Care, Kent, Milford, Wilmington)

Respiratory



Avg Last 7 Intervals
Cusum Flags: C1=Mild Sensitivity C2=Moderate Sensitivity C3=Ultra Sensitivity
 =C1
 =C1C3
▲ =C2C3
 =C3
 =C1C2C3

2008-2009 Influenza Seasons Confirmed and Unconfirmed Seasonal Influenza



***NOTE: Confirmed cases: PCR (Polymerase Chain Reaction) positive or Influenza culture positive.
Unconfirmed cases: Rapid assay positive, not confirmed with PCR or culture.**