

The background of the page is white with a pattern of diagonal grey lines. The lines are parallel and spaced evenly, creating a grid-like effect. The text is centered on the page.

Infant Mortality

2003

Infant Mortality Highlights

<u>Key Indicators</u>	<u>Period</u>	<u>Delaware</u>	<u>U.S.</u>	<u>Recent Trend in Delaware*</u>
Infant Mortality • Deaths to children under one year of age per 1,000 live births <i>(See Table E-4)</i>	1999-2003	9.1	6.9	Stable
Neonatal Mortality • Deaths under 28 days of age per 1,000 live births <i>(See Table E-5)</i>	1999-2003	6.7	4.6	Increasing
Postneonatal Mortality • Deaths to children 28 to 364 days of age per 1,000 live births <i>(See Table E-6)</i>	1999-2003	2.5	2.3	Stable

* Trend over last 3 to 4 time periods.

Key Facts

- Infants born to mothers who received late or no prenatal care had a mortality rate of 21.7 compared to that of infants born to mothers who received prenatal care in the first trimester (8.3). *(See Table E-8).*
- Infants born weighing less than 1500 grams (3 lbs 5 oz) had a mortality rate of 316.2 compared to 2.3 for infants born weighing 2500 grams (5 lbs 8 oz) or more. *(See Table E-8).*
- Infants born to mothers under 20 years of age had a higher mortality rate (12.1) than infants born to mothers 20 years of age and older (8.6). *(See Table E-8).*
- Infants born to single mothers had a higher mortality rate (12.1) than infants born to married mothers (7.0). *(See Table E-8).*

TABLE E-1
NUMBER OF INFANT DEATHS BY RACE

U.S., DELAWARE, COUNTIES AND CITY OF WILMINGTON, 1986-2003

Area/ Race	1986	1987	1988	1989	1990	1991	1992	1993	1994	1995	1996	1997	1998	1999	2000	2001	2002	2003
U.S.																		
All Races	38891	38408	38910	39655	38351	36766	34628	33466	31710	29583	28237	28045	28371	27937	28035	27568	28034	28428*
White	26564	25810	25925	25794	24883	23657	22164	21497	20504	19490	18749	18539	18561	18067	18144	17955	18369	18768*
Black	11204	11461	11840	12527	12290	11994	11348	10887	10072	9118	8490	8496	8726	8822	8771	8498	8524	8437*
Other	1123	1137	1145	1334	1178	1115	1116	1082	1134	975	998	1010	1084	1048	1120	1115	1141	1223*
Delaware																		
All Races	112	116	121	128	110	136	93	94	70	79	77	81	103	81	102	114	96	107
White	70	69	71	77	58	79	44	44	40	46	43	42	54	31	65	60	57	53
Black	41	47	49	51	52	55	49	50	27	32	32	36	49	49	37	53	35	53
Other	1	0	1	0	0	2	0	0	3	1	2	3	0	1	0	1	4	1
Kent																		
All Races	15	19	27	17	30	18	19	11	15	18	17	14	18	10	21	19	27	16
White	11	13	16	10	17	9	12	5	10	10	11	4	13	4	16	10	22	8
Black	4	6	11	7	13	8	7	6	5	7	6	10	5	6	5	9	5	8
Other	0	0	0	0	0	1	0	0	0	1	0	0	0	0	0	0	0	0
New Castle																		
All Races	79	78	72	81	68	98	66	68	37	45	48	48	65	61	67	72	55	78
White	47	46	43	47	33	59	29	32	20	24	21	26	27	22	40	37	30	37
Black	31	32	28	34	35	38	37	36	15	21	26	20	38	38	27	35	22	40
Other	1	0	1	0	0	1	0	0	2	0	1	2	0	1	0	0	3	1
Wilmington																		
All Races	34	32	26	29	25	34	27	24	15	11	19	14	18	20	16	17	12	18
White	16	9	7	7	2	11	4	4	3	2	1	4	2	4	4	2	2	4
Black	18	23	19	22	23	23	23	20	11	9	18	10	16	16	12	15	10	14
Other	0	0	0	0	0	0	0	0	1	0	0	0	0	0	0	0	0	0
Balance of NC County																		
All Races	45	46	46	52	43	64	39	44	22	34	29	34	47	41	51	55	43	60
White	31	37	36	40	31	48	25	28	17	22	20	22	25	18	36	35	28	33
Black	13	9	9	12	12	15	14	16	4	12	8	10	22	22	15	20	12	26
Other	1	0	1	0	0	1	0	0	1	0	1	2	0	1	0	0	3	1
Sussex																		
All Races	18	19	22	30	12	20	8	15	18	16	12	19	20	10	14	23	14	13
White	12	10	12	20	8	11	3	7	10	12	11	12	14	5	9	13	5	8
Black	6	9	10	10	4	9	5	8	7	4	0	6	6	5	5	9	8	5
Other	0	0	0	0	0	0	0	0	1	0	1	1	0	0	0	1	1	0

Notes:

1. *Based on NCHS estimate.
2. Infant deaths refer to deaths to children under one year of age.

Sources:

National Center for Health Statistics
Delaware State Health Center

INFANT1

TABLE E-2
NUMBER OF NEONATAL DEATHS BY RACE

U.S., DELAWARE, COUNTIES AND CITY OF WILMINGTON, 1986-2003

Area/ Race	1986	1987	1988	1989	1990	1991	1992	1993	1994	1995	1996	1997	1998	1999	2000	2001	2002	2003
U.S.																		
All Races	25212	24627	24690	25168	24309	22978	21849	21174	20250	19155	18326	18524	18918	18728	18776	18265	18749	19108*
White	17256	16448	16346	16428	15751	14698	13915	13506	13100	12644	12252	12269	12406	12164	12201	12013	12354	12698*
Black	7297	7520	7695	8021	7905	7677	7296	7044	6499	5940	5483	5637	5824	5920	5843	5585	5646	5626*
Other	659	659	649	719	653	603	638	624	651	571	591	618	688	644	732	667	749	784*
Delaware																		
All Races	86	81	90	93	76	90	64	69	48	47	53	55	74	58	71	82	79	75
White	54	49	49	60	40	55	33	33	28	26	28	26	33	21	45	44	48	36
Black	31	32	40	33	36	34	31	36	18	20	24	27	41	37	26	37	28	38
Other	1	0	1	0	0	1	0	0	2	1	1	2	0	0	0	1	3	1
Kent																		
All Races	10	17	16	7	19	12	11	6	7	10	13	10	9	8	15	15	22	8
White	7	12	8	3	13	5	9	2	3	6	7	1	6	3	11	10	18	3
Black	3	5	8	4	6	6	2	4	4	3	6	9	3	5	4	5	4	5
Other	0	0	0	0	0	1	0	0	0	1	0	0	0	0	0	0	0	0
New Castle																		
All Races	61	58	56	67	46	66	47	56	28	26	33	33	47	44	50	54	47	56
White	36	34	33	40	20	43	21	27	17	12	14	19	15	14	29	27	26	27
Black	24	24	22	27	26	23	26	29	9	14	18	13	32	30	21	27	19	28
Other	1	0	1	0	0	0	0	0	2	0	1	1	0	0	0	0	2	1
Wilmington																		
All Races	25	25	23	24	20	22	19	17	10	6	14	6	12	14	13	14	9	10
White	12	8	7	7	2	10	3	2	3	0	1	3	1	2	4	1	1	1
Black	13	17	16	17	18	12	16	15	6	6	13	3	11	12	9	13	8	9
Other	0	0	0	0	0	0	0	0	1	0	0	0	0	0	0	0	0	0
Balance of NC County																		
All Races	36	33	33	43	26	44	28	39	18	20	19	27	35	30	37	40	38	46
White	24	26	26	33	18	33	18	25	14	12	13	16	14	12	25	26	25	26
Black	11	7	6	10	8	11	10	14	3	8	5	10	21	18	12	14	11	19
Other	1	0	1	0	0	0	0	0	1	0	1	1	0	0	0	0	2	1
Sussex																		
All Races	15	6	18	19	11	12	6	7	13	11	7	12	18	6	6	13	10	11
White	11	3	8	17	7	7	3	4	8	8	7	6	12	4	5	7	4	6
Black	4	3	10	2	4	5	3	3	5	3	0	5	6	2	1	5	5	5
Other	0	0	0	0	0	0	0	0	0	0	0	1	0	0	0	1	1	0

Notes:

1. *Based on NCHS estimate.
2. Neonatal deaths refer to deaths to children under 28 days of age.

Sources:

National Center for Health Statistics
Delaware Health Statistics Center

INFANT2

TABLE E-3
NUMBER OF POSTNEONATAL DEATHS BY RACE

U.S., DELAWARE, COUNTIES AND CITY OF WILMINGTON, 1986-2003

Area/ Race	1986	1987	1988	1989	1990	1991	1992	1993	1994	1995	1996	1997	1998	1999	2000	2001	2002	2003
U.S.																		
All Races	13679	13781	14220	14487	14042	13788	12779	12292	11460	10428	9911	9521	9453	9209	9259	9303	9285	9320*
White	9308	9362	9579	9366	9132	8959	8249	7991	7404	6846	6497	6270	6155	5903	5943	5942	6015	6070*
Black	3907	3941	4145	4506	4385	4317	4052	3843	3573	3178	3007	2859	2902	2902	2928	2913	2878	2811*
Other	464	478	496	615	525	512	478	458	483	404	407	392	396	404	388	448	392	439*
Delaware																		
All Races	26	35	31	35	34	46	29	25	22	32	24	26	29	23	31	32	17	32
White	16	20	22	17	18	24	11	11	12	20	15	16	21	10	20	16	9	17
Black	10	15	9	18	16	21	18	14	9	12	8	9	8	12	11	16	7	15
Other	0	0	0	0	0	1	0	0	1	0	1	1	0	1	0	0	1	0
Kent																		
All Races	5	2	11	10	11	6	8	5	8	8	4	4	9	2	6	4	5	8
White	4	1	8	7	4	4	3	3	7	4	4	3	7	1	5	0	4	5
Black	1	1	3	3	7	2	5	2	1	4	0	1	2	1	1	4	1	3
Other	0	0	0	0	0	0	0	0	0	0	0	0	0	0	0	0	0	0
New Castle																		
All Races	18	20	16	14	22	32	19	12	9	19	15	15	18	17	17	18	8	22
White	11	12	10	7	13	16	8	5	3	12	7	7	12	8	11	10	4	10
Black	7	8	6	7	9	15	11	7	6	7	8	7	6	8	6	8	3	12
Other	0	0	0	0	0	1	0	0	0	0	0	1	0	1	0	0	1	0
Wilmington																		
All Races	9	7	3	5	5	12	8	7	5	5	5	8	6	6	3	3	3	8
White	4	1	0	0	0	1	1	2	0	2	0	1	1	2	0	1	1	3
Black	5	6	3	5	5	11	7	5	5	3	5	7	5	4	3	2	2	5
Other	0	0	0	0	0	0	0	0	0	0	0	0	0	0	0	0	0	0
Balance of NC County																		
All Races	9	13	13	9	17	20	11	5	4	14	10	7	12	11	14	15	5	14
White	7	11	10	7	13	15	7	3	3	10	7	6	11	6	11	9	3	7
Black	2	2	3	2	4	4	4	2	1	4	3	0	1	4	3	6	1	7
Other	0	0	0	0	0	1	0	0	0	0	0	1	0	1	0	0	1	0
Sussex																		
All Races	3	13	4	11	1	8	2	8	5	5	5	7	2	4	8	10	4	2
White	1	7	4	3	1	4	0	3	2	4	4	6	2	1	4	6	1	2
Black	2	6	0	8	0	4	2	5	2	1	0	1	0	3	4	4	3	0
Other	0	0	0	0	0	0	0	0	1	0	1	0	0	0	0	0	0	0

Notes:

- *Based on NCHS estimate.
- Postneonatal deaths refer to deaths to children 28 to 364 days of age.

Sources:

National Center for Health Statistics
 Delaware Health Statistics Center

INFANT3

TABLE E- 4
 FIVE-YEAR AVERAGE INFANT MORTALITY RATES BY RACE
 U.S., DELAWARE, COUNTIES AND CITY OF WILMINGTON, 1983-2003

Area/ Race	1983 -1987	1984 -1988	1985 -1989	1986 -1990	1987 -1991	1988 -1992	1989 -1993	1990 -1994	1991 -1995	1992 -1996	1993 -1997	1994 -1998	1995 -1999	1996 -2000	1997 -2001	1998 -2002	1999 -2003
U.S.																	
All Races	10.6	10.4	10.2	9.9	9.6	9.3	9.0	8.6	8.3	8.0	7.7	7.5	7.3	7.1	7.0	7.0	6.9
White	9.2	9.0	8.7	8.3	8.0	7.7	7.3	7.0	6.8	6.5	6.4	6.2	6.0	5.9	5.8	5.8	5.7
Black	18.3	18.0	18.1	18.0	17.9	17.7	17.5	17.0	16.4	15.8	15.3	14.8	14.6	14.4	14.2	14.3	14.2
Delaware																	
All Races	11.8+	12.1+	12.3+	11.3+	11.5+	10.9+	10.4+	9.3	8.9	7.9	7.8	7.9	8.1+	8.4+	9.0+	9.2+	9.1+
White	9.3	9.6	9.9+	8.9	8.9	8.2	7.5	6.6	6.4	5.6-	5.6	5.9	5.7	6.2	6.6	6.9+	6.9+
Black	19.9	20.6	20.7	19.6	20.0	19.8	19.9	18.2	17.0	15.7	14.7	14.4	15.8	15.9	17.1+	16.7+	16.7+
Kent																	
All Races	9.7	11.3	11.1	11.2	11.3	11.3	9.7	9.6	8.6	8.6	8.2	9.0	8.4	8.6	8.7	9.9	9.5
White	9.3	10.5	9.9	9.4	9.0	8.8	7.3	7.3	6.5	6.8	5.9	7.1	6.3	7.0	6.9	9.5	8.6
Black	11.3	14.4	15.6	17.7	19.0	19.9	17.9	17.6	15.5	15.1	16.5	15.9	15.7	14.3	15.2	12.7	13.4
New Castle																	
All Races	12.6	12.4	12.5	11.2	11.3	10.8	10.7	9.5	9.0	7.8	7.3	7.3	7.9	8.5	9.1	9.2	9.5
White	9.6	9.5	9.6	8.4	8.6	7.9	7.5	6.5	6.3	5.0	4.9	4.8	4.9	5.6	6.2	6.4	6.8
Black	23.4	23.2	23.1	21.1	20.8	20.8	21.7	19.8	18.3	17.5	15.3	15.1	17.4	17.7	18.2	18.0	18.0
Wilmington																	
All Races	N/A	N/A	N/A	20.9	20.4	19.6	19.5	18.0	16.6	15.2	13.6	12.8	13.7	14.4	14.0	13.5	13.5
White	N/A	N/A	N/A	16.2	14.1	12.3	11.2	9.7	10.1	6.2	6.4	5.6	6.2	7.0	7.4	6.3	7.1
Black	N/A	N/A	N/A	23.8	24.2	23.8	24.3	22.8	20.4	20.5	17.8	16.8	18.0	18.7	18.0	17.9	17.6
Balance of NC County																	
All Races	N/A	N/A	N/A	8.6	9.0	8.6	8.5	7.5	7.2	6.1	5.9	6.0	6.7	7.2	8.1	8.3	8.6
White	N/A	N/A	N/A	7.6	8.1	7.4	7.1	6.2	5.9	4.8	4.8	4.7	4.8	5.4	6.1	6.4	6.8
Black	N/A	N/A	N/A	17.3	16.4	17.1	18.5	16.3	16.0	14.4	12.9	13.6	16.8	16.8	18.5	18.1	18.2
Sussex																	
All Races	11.0	11.8	12.8	12.2	12.2	10.7	9.7	8.3	8.7	7.9	9.0	9.4	8.5	8.1	9.0	8.3	7.4
White	8.2	9.1	10.8	10.5	10.1	8.8	7.8	6.2	6.8	6.8	8.0	8.9	8.0	7.5	7.6	6.5	5.5
Black	17.8	18.5	18.0	16.8	18.0	16.1	15.3	13.7	13.9	10.4	11.1	10.4	9.9	10.4	14.4	15.9	15.4

INFANT4

Notes:

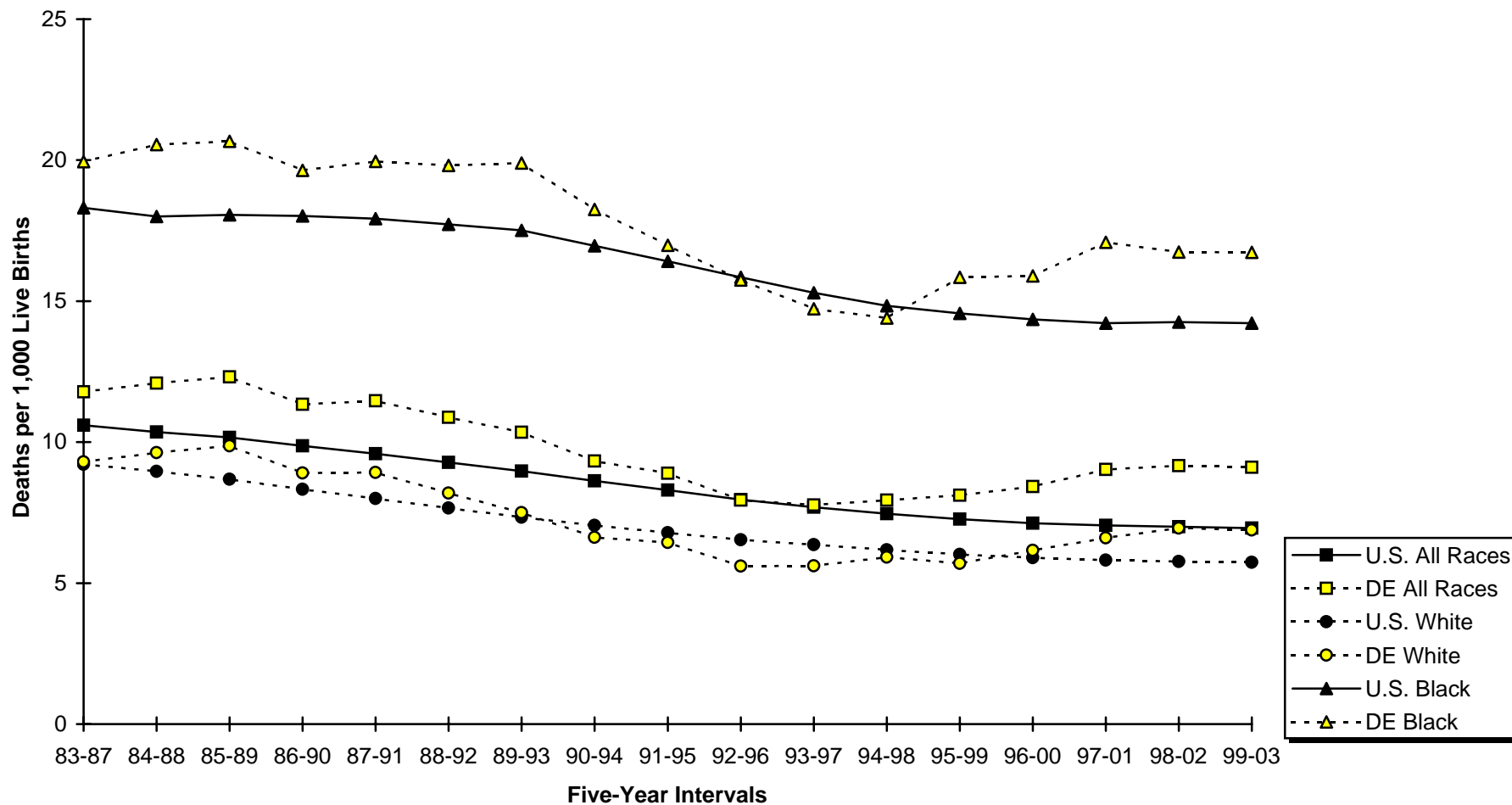
1. 1999-2003 US data are based on NCHS estimates.
2. N/A indicates data not available.
3. Infant mortality rates represent the number of deaths to children under one year of age per 1000 live births.
4. '+' indicates that the Delaware rate is significantly higher than the U.S. rate.
5. '-' indicates that the Delaware rate is significantly lower than the U.S. rate.
6. No statistical comparisons were made between the county rates and the U.S. rate due to small numbers. See Appendix C for details.

Sources:

National Center for Health Statistics
 Delaware Health Statistics Center
 Summer 2005

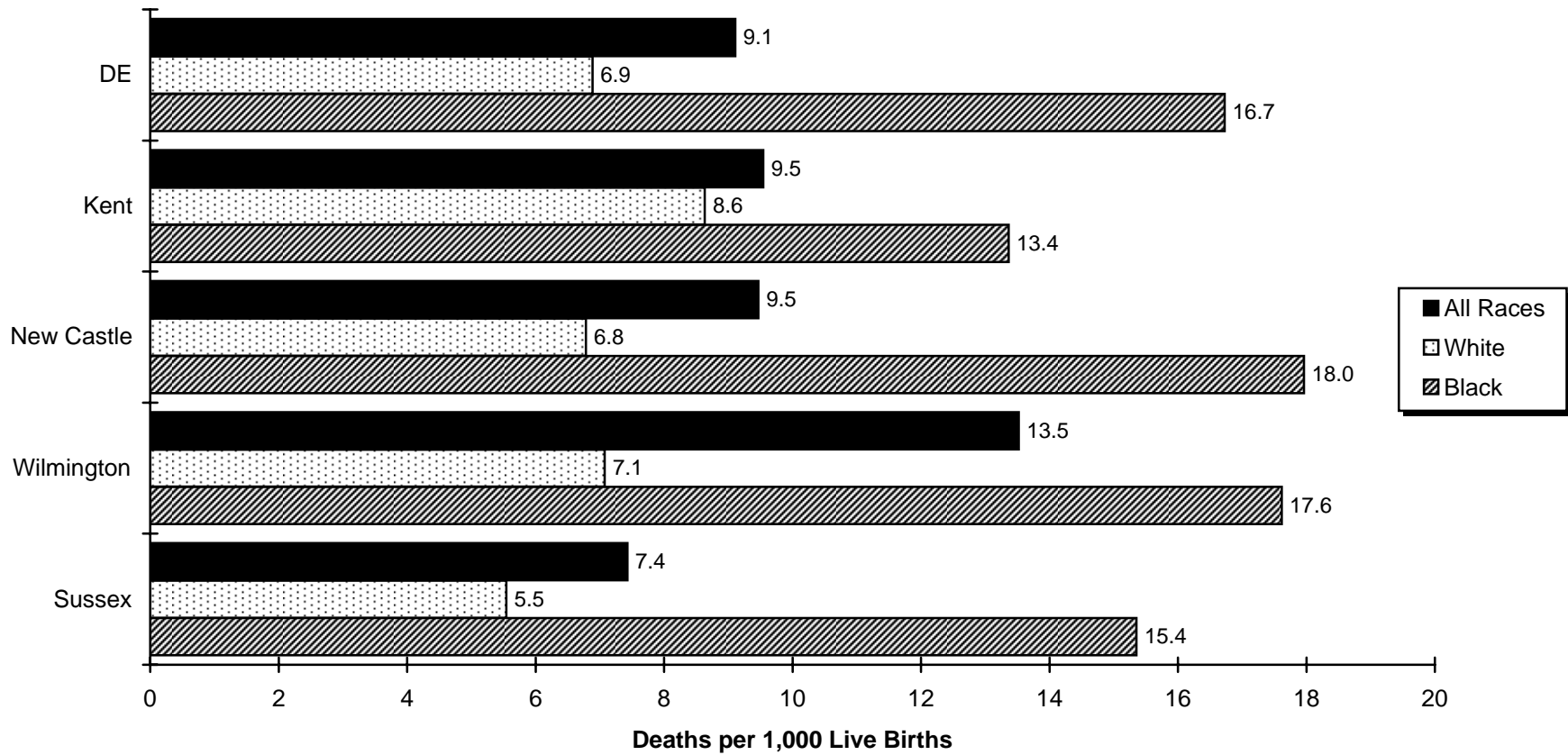
Figure E-1
Five-Year Average Infant Mortality Rates by Race

U.S. and Delaware, 1983-2003



Sources:
 Delaware Health Statistics Center
 National Center for Health Statistics
 Delaware Vital Statistics Annual Report

Figure E-2
Five-Year Average Infant Mortality Rates by Race
Delaware, Counties and the City of Wilmington, 1999-2003



Source:
 Delaware Health Statistics Center

TABLE E-5
FIVE-YEAR AVERAGE NEONATAL MORTALITY RATES BY RACE
U.S., DELAWARE, COUNTIES AND CITY OF WILMINGTON, 1983-2003

Area/ Race	1983 -1987	1984 -1988	1985 -1989	1986 -1990	1987 -1991	1988 -1992	1989 -1993	1990 -1994	1991 -1995	1992 -1996	1993 -1997	1994 -1998	1995 -1999	1996 -2000	1997 -2001	1998 -2002	1999 -2003
U.S.																	
All Races	6.9	6.7	6.5	6.3	6.1	5.9	5.7	5.4	5.3	5.1	5.0	4.9	4.8	4.7	4.7	4.7	4.6
White	6.0	5.8	5.6	5.3	5.1	4.8	4.6	4.4	4.3	4.2	4.1	4.0	4.0	3.9	3.9	3.9	3.9
Black	11.9	11.8	11.8	11.7	11.6	11.4	11.3	10.9	10.6	10.2	9.9	9.7	9.6	9.5	9.5	9.5	9.4
Delaware																	
All Races	8.4+	8.8+	9.0+	8.2+	8.1+	7.6+	7.2+	6.4+	6.0+	5.4	5.3	5.4	5.5+	5.9+	6.4+	6.7+	6.7+
White	6.8	7.0+	7.3+	6.5+	6.4+	5.9+	5.5+	4.7	4.5	3.8	3.7	3.7	3.5	4.0	4.4	5.0+	5.0+
Black	13.9	14.8+	14.7+	14.1+	13.7+	13.5+	13.2	12.1	11.1	10.7	10.4	10.6	11.9+	12.1+	12.8+	12.7+	12.2+
Kent																	
All Races	6.8	7.8	7.4	7.1	7.2	6.6	5.6	5.7	4.9	5.0	5.0	5.4	5.5	5.9	6.1	7.2	7.0
White	6.5	7.0	6.4	6.0	5.7	5.2	4.4	4.4	3.6	3.8	2.8	3.4	3.4	4.1	4.6	7.0	6.5
Black	7.5	10.2	10.7	11.2	12.2	11.3	9.6	9.9	8.9	9.3	12.7	12.0	12.0	12.1	11.3	8.9	9.3
New Castle																	
All Races	9.2	9.2	9.5	8.5	8.4	7.9	7.9	6.9	6.4	5.6	5.2	5.0	5.4	6.1	6.6	6.9	7.1
White	7.0	7.1	7.4	6.3	6.4	5.9	5.7	4.8	4.6	3.6	3.6	3.1	3.0	3.7	4.3	4.5	5.0
Black	17.2	17.0	17.4	16.2	15.2	15.0	15.8	13.9	12.6	12.4	10.8	10.8	13.0	13.5	14.2	14.5	13.9
Wilmington																	
All Races	N/A	N/A	N/A	16.8	16.0	15.0	14.3	12.7	11.1	10.5	8.7	8.0	8.7	9.8	9.7	10.1	9.8
White	N/A	N/A	N/A	14.2	13.3	11.5	9.6	8.1	7.6	4.0	4.1	3.8	3.3	5.2	5.1	4.1	4.0
Black	N/A	N/A	N/A	18.4	17.6	17.1	17.1	15.2	13.0	14.2	11.2	10.2	11.8	12.5	12.5	13.8	13.4
Balance of NC County																	
All Races	N/A	N/A	N/A	6.4	6.4	6.1	6.3	5.4	5.3	4.5	4.5	4.3	4.7	5.3	6.0	6.3	6.6
White	N/A	N/A	N/A	5.5	5.7	5.3	5.2	4.5	4.3	3.5	3.5	3.1	3.0	3.6	4.2	4.6	5.1
Black	N/A	N/A	N/A	13.2	12.1	12.4	14.2	12.3	12.1	10.6	10.3	11.4	14.1	14.4	15.6	15.1	14.2
Sussex																	
All Races	7.2	8.3	8.6	8.3	7.8	7.7	6.3	5.6	5.5	5.0	5.6	6.8	6.0	5.3	5.8	5.5	4.6
White	6.0	6.6	8.1	7.8	6.9	6.8	6.1	4.6	4.7	4.8	5.1	6.2	5.5	5.0	4.9	4.5	3.6
Black	10.2	12.5	10.3	9.9	10.3	10.2	7.2	8.3	8.0	6.1	7.1	8.6	7.6	6.6	8.8	9.1	8.6

Notes:

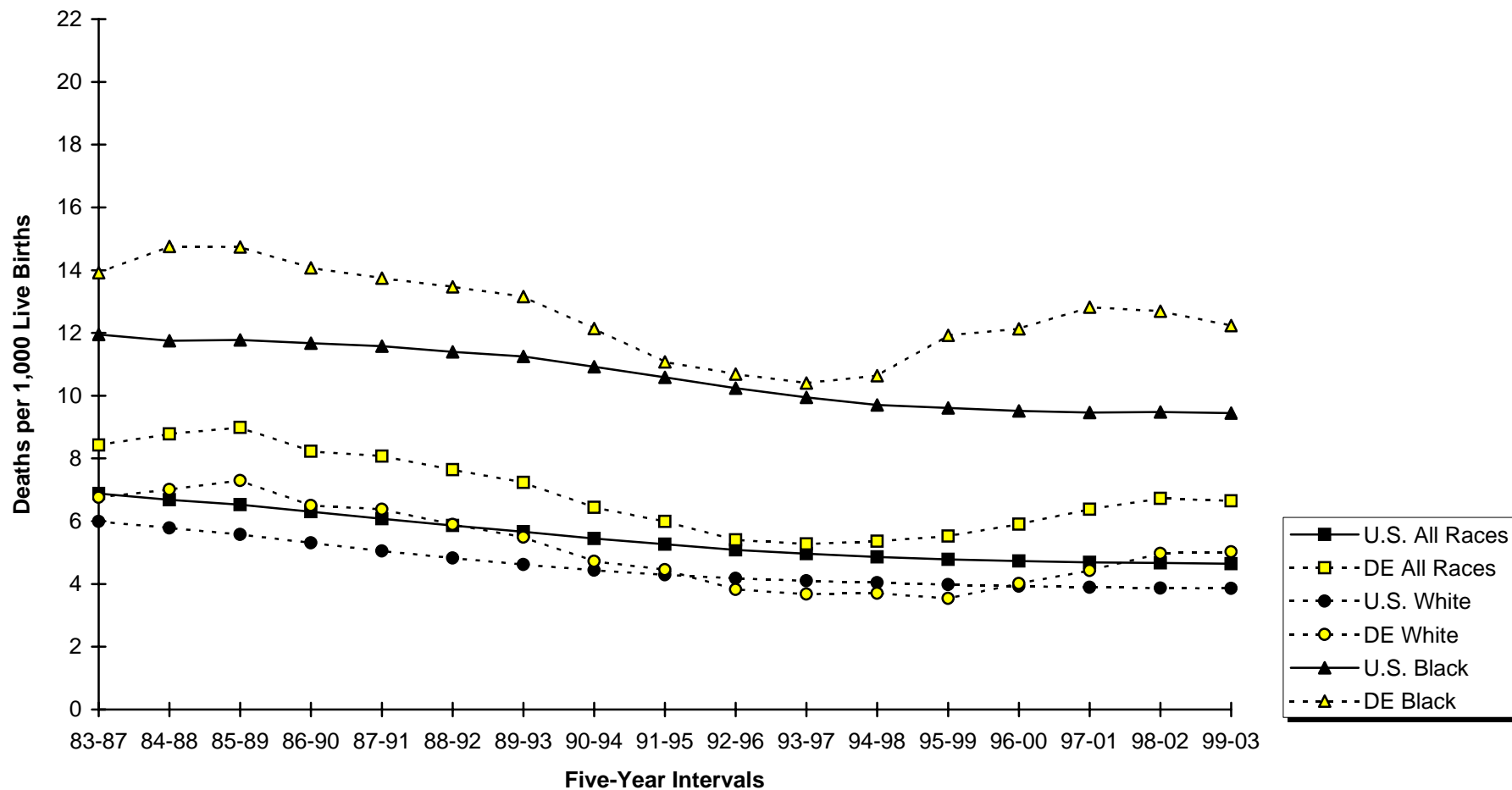
1. 1999-2003 US data are based on NCHS estimates.
2. N/A indicates data not available.
3. Neonatal mortality rates represent the number of deaths to children under 28 days of age per 1000 live births.
4. + indicates that the Delaware rate is significantly higher than the U.S. rate. No statistical comparisons were made between the county rates and the U.S. rate due to small numbers. See Appendix C for details.

Sources:

National Center for Health Statistics
Delaware Health Statistics Center

INFANTS

Figure E-3
Five-Year Average Neonatal Mortality Rates by Race
U.S. and Delaware, 1983-2003



Sources:
 Delaware Health Statistics Center
 National Center for Health Statistics

TABLE E-6
 FIVE-YEAR AVERAGE POSTNEONATAL MORTALITY RATES BY RACE
 U.S., DELAWARE, COUNTIES AND CITY OF WILMINGTON, 1983-2003

Area/ Race	1983 -1987	1984 -1988	1985 -1989	1986 -1990	1987 -1991	1988 -1992	1989 -1993	1990 -1994	1991 -1995	1992 -1996	1993 -1997	1994 -1998	1995 -1999	1996 -2000	1997 -2001	1998 -2002	1999 -2003
U.S.																	
All Races	3.7	3.7	3.6	3.6	3.5	3.4	3.3	3.2	3.0	2.9	2.7	2.6	2.5	2.4	2.4	2.3	2.3
White	3.2	3.2	3.1	3.0	2.9	2.8	2.7	2.6	2.5	2.4	2.3	2.1	2.0	2.0	1.9	1.9	1.9
Black	6.4	6.2	6.3	6.3	6.3	6.3	6.3	6.0	5.8	5.6	5.4	5.1	5.0	4.8	4.8	4.8	4.8
Delaware																	
All Races	3.4	3.3	3.3	3.1	3.4	3.2	3.1	2.9	2.9	2.5	2.5	2.6	2.6	2.5	2.6	2.4	2.5
White	2.5-	2.6-	2.6-	2.4-	2.5	2.3-	2.0-	1.9-	2.0-	1.8-	1.9	2.2	2.2	2.2	2.2	2.0	1.9
Black	6.0	5.8	5.9	5.6	6.2	6.3	6.7	6.1	5.9	5.1	4.3	3.8-	3.9	3.8	4.3	4.1	4.5
Kent																	
All Races	3.0	3.6	3.8	4.0	4.1	4.7	4.1	3.9	3.7	3.5	3.2	3.6	3.0	2.7	2.7	2.7	2.6
White	2.8	3.4	3.5	3.4	3.3	3.6	2.9	2.9	3.0	3.0	3.1	3.7	2.8	2.9	2.4	2.5	2.2
Black	3.8	4.2	4.9	6.5	6.7	8.7	8.3	7.7	6.6	5.8	3.9	3.9	3.7	2.2	3.9	3.8	4.1
New Castle																	
All Races	3.4	3.2	3.0	2.7	3.0	2.9	2.8	2.7	2.6	2.2	2.1	2.3	2.5	2.4	2.5	2.2	2.3
White	2.6	2.4	2.3	2.1	2.2	2.0	1.8	1.7	1.7	1.4	1.4	1.7	1.9	1.8	2.0	1.8	1.8
Black	6.2	6.2	5.7	4.9	5.6	5.8	5.9	5.9	5.7	5.1	4.5	4.3	4.4	4.2	4.0	3.5	4.1
Wilmington																	
All Races	N/A	N/A	N/A	4.2	4.5	4.6	5.2	5.3	5.5	4.8	4.9	4.8	5.0	4.6	4.3	3.4	3.7
White	N/A	N/A	N/A	2.0	0.8	0.8	1.6	1.6	2.5	2.2	2.3	1.9	2.9	1.9	2.3	2.3	3.1
Black	N/A	N/A	N/A	5.4	6.6	6.7	7.2	7.5	7.3	6.3	6.5	6.6	6.3	6.2	5.5	4.2	4.2
Balance of NC County																	
All Races	N/A	N/A	N/A	2.3	2.6	2.5	2.2	2.0	1.9	1.6	1.5	1.7	1.9	1.9	2.1	2.0	2.0
White	N/A	N/A	N/A	2.1	2.3	2.1	1.9	1.7	1.6	1.3	1.3	1.6	1.8	1.8	1.9	1.8	1.6
Black	N/A	N/A	N/A	4.1	4.3	4.7	4.3	4.0	3.9	3.7	2.6	2.2	2.7	2.4	2.9	3.0	4.0
Sussex																	
All Races	3.8	3.5	4.1	3.9	4.4	3.0	3.4	2.7	3.2	2.9	3.4	2.7	2.5	2.8	3.3	2.9	2.8
White	2.2	2.5	2.8	2.7	3.1	1.9	1.8	1.6	2.1	2.1	2.9	2.7	2.5	2.5	2.7	2.0	1.9
Black	7.6	6.0	7.7	6.9	7.7	5.9	8.1	5.4	5.9	4.4	4.0	1.8	2.4	3.8	5.6	6.7	6.7

INFANTS

Notes:

1. 1999-2003 US data based on NCHS estimates.
2. N/A indicates data not available.
3. Postneonatal mortality rates represent the number of deaths to children 28 to 364 days of age per 1000 live births.
4. "-" indicates that the Delaware rate is significantly lower than the U.S. rate. No statistical comparisons were made between the county rates and the U.S. rate due to small numbers. See Appendix C for details.

Sources:

National Center for Health Statistics
 Delaware Health Statistics Center

Figure E-4
Five-Year Average Postneonatal Mortality Rates by Race
U.S. and Delaware, 1983-2003

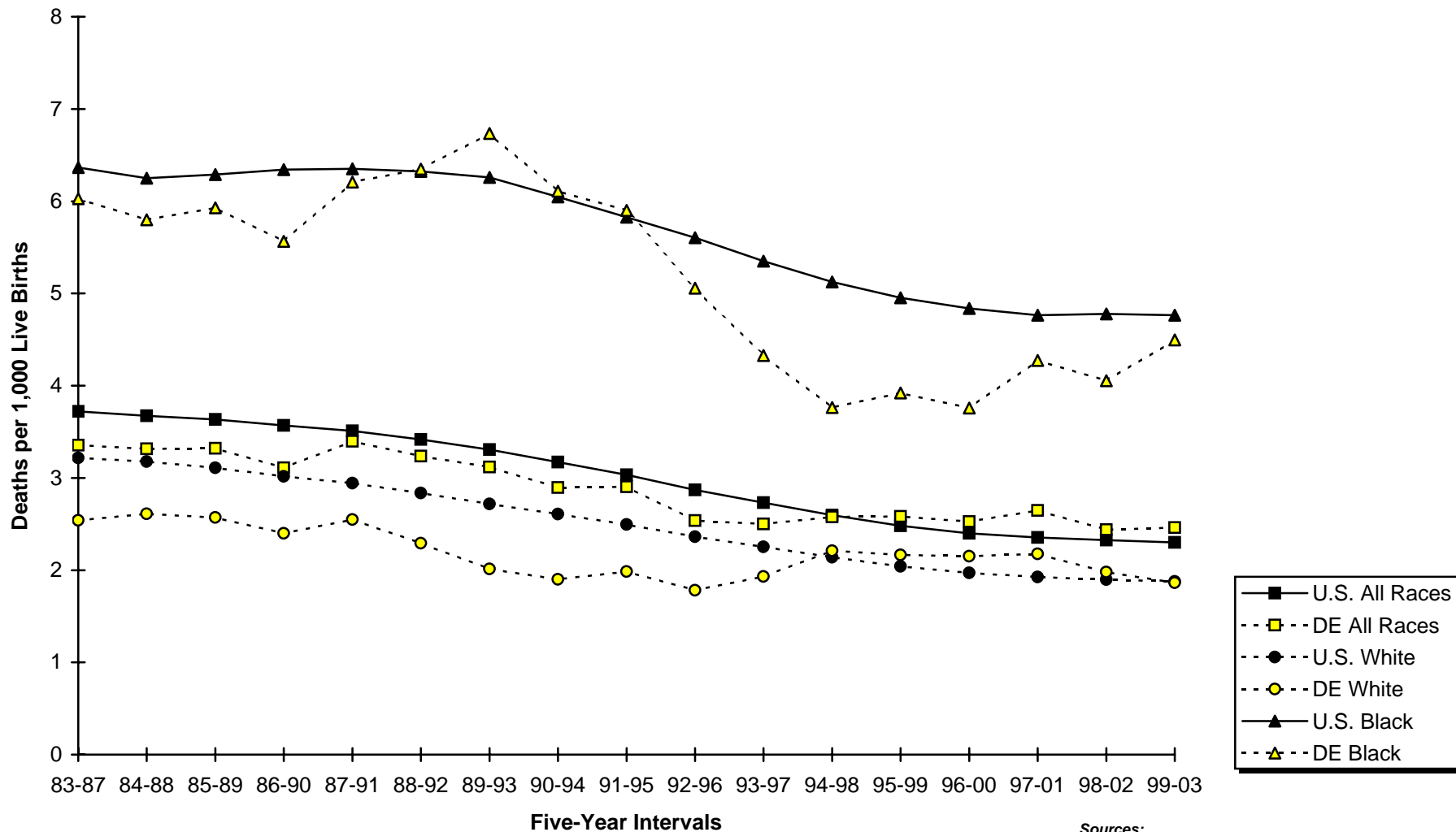


TABLE E-7
FIVE-YEAR AVERAGE PERINATAL MORTALITY RATES BY RACE

DELAWARE, 1989-2003

Area/ Race	1989 -1993	1990 -1994	1991 -1995	1992 -1996	1993 -1997	1994 -1998	1995 -1999	1996 -2000	1997 -2001	1998 -2002	1999 -2003
Delaware											
All Races	9.8	8.8	8.0	7.1	6.9	6.9	7.0	7.1	7.6	8.1	8.1
White	7.6	6.8	6.3	5.7	5.6	5.7	5.4	5.6	5.8	6.2	6.3
Black	16.9	15.2	13.2	11.4	10.8	10.9	12.0	12.4	14.0	14.7	14.5
Kent											
All Races	8.4	8.2	7.6	7.7	6.8	7.3	7.6	7.5	7.4	9.1	9.0
White	7.8	7.6	6.4	6.4	4.8	5.6	5.8	6.0	6.2	8.3	7.9
Black	10.5	9.9	10.3	11.2	12.6	12.5	13.3	12.9	12.2	12.2	12.9
New Castle											
All Races	10.4	9.2	8.3	7.3	6.9	6.7	7.0	7.3	8.0	8.4	8.5
White	7.6	6.7	6.3	5.5	5.5	5.3	5.0	5.3	5.6	5.8	6.2
Black	19.7	17.5	14.8	13.2	11.3	11.3	13.1	13.7	15.4	16.4	16.0
Sussex											
All Races	8.9	8.1	7.2	5.9	7.0	7.3	6.6	6.3	6.7	6.5	6.0
White	7.5	6.5	6.2	6.2	6.8	7.2	6.5	6.1	5.7	5.5	5.1
Black	13.1	12.3	10.4	5.6	7.5	7.7	6.6	6.6	10.2	10.1	9.6

Notes:

PERI_RACE

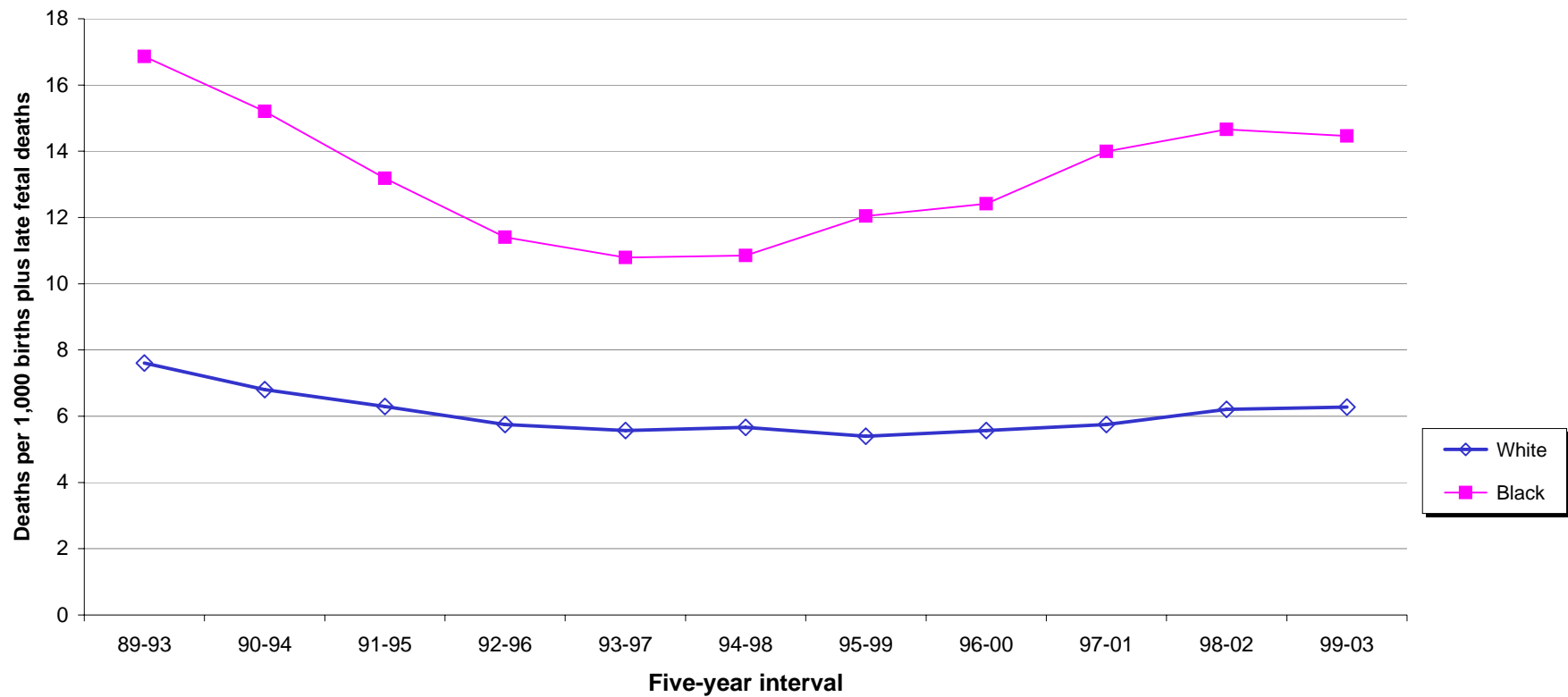
1. Perinatal relates to the period surrounding the birth event.
2. The perinatal mortality rate is the sum of late fetal deaths (28+ weeks gestation) and early infant deaths (<7 days of age) divided by the number of live births and late fetal deaths, per 1,000 live births and late fetal deaths.

Sources

Delaware Health Statistics Center

Figure E-5
Five-year Perinatal Mortality Rates by Race

Delaware, 1989-2003



Source:
Delaware Health Statistics Center

TABLE E-8
FIVE-YEAR AVERAGE
INFANT MORTALITY RATES BY SELECTED RISK MARKERS AND RACE OF MOTHER

DELAWARE, 1998-2002 LIVE BIRTH COHORT

Risk Factor	Race		
	All Races	White	Black
Birth Weight of Child			
<2500	76.4	68.7	90.5
<1500	316.2	303.4	335.5
1500-2499	13.5	14.5	----
2500+	2.3	2.1	3.0
Age of Mother			
<20	12.1	10.5	14.1
20-24	9.8	7.0	15.7
25-29	7.2	5.5	14.3
30+	8.7	7.2	17.3
Marital Status of Mother			
Married	7.0	6.0	14.6
Single	12.1	9.3	15.7
Education of Mother			
<12 years	11.1	9.4	15.4
H.S. diploma	11.7	8.9	17.8
1+ years college	6.0	4.7	12.6
Trimester Care Received			
Late/No PNC ³	21.7	19.6	25.8
First	8.3	6.4	14.8
Interval Since Last Live Birth			
<18 months	8.9	7.3	13.0
18+ months	7.0	5.7	11.2

Notes:

COHRATES

1. Infant mortality rates represent the number of deaths to children under one year of age per 1,000 live births.
2. "----" Indicates rate does not meet standard of reliability or precision; based on fewer than 20 deaths in the numerator.
3. Defined as receiving no care or care in the third trimester.

Source:

Delaware Health Statistics Center

TABLE E-9
NUMBER OF INFANT DEATHS BY PLURALITY, BIRTH WEIGHT IN GRAMS, RACE OF MOTHER AND SEX OF CHILD
DELAWARE, 1999-2003 LIVE BIRTH COHORT

Plurality/ Birth Weight	Race and Sex											
	All Races			White			Black			Other		
	Both Sexes	Male	Female	Both Sexes	Male	Female	Both Sexes	Male	Female	Both Sexes	Male	Female
All Births	485	280	205	264	147	117	208	127	81	13	6	7
<2500	374	213	161	196	109	87	169	100	69	9	4	5
<1500	322	186	136	166	94	72	149	88	61	7	4	3
<500	159	94	65	72	42	30	85	52	33	2	0	2
500-999	144	79	65	80	42	38	59	33	26	5	4	1
1000-1499	19	13	6	14	10	4	5	3	2	0	0	0
1500-1999	26	16	10	15	8	7	11	8	3	0	0	0
2000-2499	26	11	15	15	7	8	9	4	5	2	0	2
2500+	111	67	44	68	38	30	39	27	12	4	2	2
2500-2999	37	19	18	24	10	14	9	7	2	4	2	2
3000-3499	45	26	19	27	15	12	18	11	7	0	0	0
3500-3999	21	16	5	13	10	3	8	6	2	0	0	0
4000-4499	7	6	1	3	3	0	4	3	1	0	0	0
4500+	1	0	1	1	0	1	0	0	0	0	0	0
Unknown	0	0	0	0	0	0	0	0	0	0	0	0
Single Births	378	222	156	191	108	83	177	110	67	10	4	6
<2500	269	156	113	125	71	54	138	83	55	6	2	4
<1500	224	133	91	101	60	41	119	71	48	4	2	2
<500	107	64	43	42	25	17	63	39	24	2	0	2
500-999	102	57	45	49	26	23	51	29	22	2	2	0
1000-1499	15	12	3	10	9	1	5	3	2	0	0	0
1500-1999	20	13	7	10	5	5	10	8	2	0	0	0
2000-2499	25	10	15	14	6	8	9	4	5	2	0	2
2500+	109	66	43	66	37	29	39	27	12	4	2	2
2500-2999	35	18	17	22	9	13	9	7	2	4	2	2
3000-3499	45	26	19	27	15	12	18	11	7	0	0	0
3500-3999	21	16	5	13	10	3	8	6	2	0	0	0
4000-4499	7	6	1	3	3	0	4	3	1	0	0	0
4500+	1	0	1	1	0	1	0	0	0	0	0	0
Unknown	0	0	0	0	0	0	0	0	0	0	0	0
Plural Births	107	58	49	73	39	34	31	17	14	3	2	1
<2500	105	57	48	71	38	33	31	17	14	3	2	1
<1500	98	53	45	65	34	31	30	17	13	3	2	1
<500	52	30	22	30	17	13	22	13	9	0	0	0
500-999	42	22	20	31	16	15	8	4	4	3	2	1
1000-1499	4	1	3	4	1	3	0	0	0	0	0	0
1500-1999	6	3	3	5	3	2	1	0	1	0	0	0
2000-2499	1	1	0	1	1	0	0	0	0	0	0	0
2500+	2	1	1	2	1	1	0	0	0	0	0	0
2500-2999	2	1	1	2	1	1	0	0	0	0	0	0
3000-3499	0	0	0	0	0	0	0	0	0	0	0	0
3500-3999	0	0	0	0	0	0	0	0	0	0	0	0
4000-4499	0	0	0	0	0	0	0	0	0	0	0	0
4500+	0	0	0	0	0	0	0	0	0	0	0	0
Unknown	0	0	0	0	0	0	0	0	0	0	0	0

Note:

1. Infant deaths refer to deaths to children under one year of age.

PLBWRCSX

Source:

Delaware Health Statistics Center

TABLE E-10
NUMBER OF NEONATAL DEATHS BY PLURALITY, BIRTH WEIGHT IN GRAMS, RACE OF MOTHER AND SEX OF CHILD
DELAWARE, 1999-2003 LIVE BIRTH COHORT

Plurality/ Birth Weight	Race and Sex											
	All Races			White			Black			Other		
	Both Sexes	Male	Female	Both Sexes	Male	Female	Both Sexes	Male	Female	Both Sexes	Male	Female
All Births	363	211	152	195	113	82	160	95	65	8	3	5
<2500	321	188	133	170	99	71	145	87	58	6	2	4
<1500	294	170	124	154	88	66	135	80	55	5	2	3
<500	157	94	63	72	42	30	83	52	31	2	0	2
500-999	121	65	56	70	37	33	48	26	22	3	2	1
1000-1499	16	11	5	12	9	3	4	2	2	0	0	0
1500-1999	16	12	4	9	7	2	7	5	2	0	0	0
2000-2499	11	6	5	7	4	3	3	2	1	1	0	1
2500+	42	23	19	25	14	11	15	8	7	2	1	1
2500-2999	17	8	9	11	5	6	4	2	2	2	1	1
3000-3499	15	8	7	8	5	3	7	3	4	0	0	0
3500-3999	8	5	3	6	4	2	2	1	1	0	0	0
4000-4499	2	2	0	0	0	0	2	2	0	0	0	0
4500+	0	0	0	0	0	0	0	0	0	0	0	0
Unknown	0	0	0	0	0	0	0	0	0	0	0	0
Single Births	267	158	109	130	78	52	131	78	53	6	2	4
<2500	227	136	91	107	65	42	116	70	46	4	1	3
<1500	203	121	82	94	57	37	106	63	43	3	1	2
<500	105	64	41	42	25	17	61	39	22	2	0	2
500-999	86	47	39	44	24	20	41	22	19	1	1	0
1000-1499	12	10	2	8	8	0	4	2	2	0	0	0
1500-1999	14	10	4	7	5	2	7	5	2	0	0	0
2000-2499	10	5	5	6	3	3	3	2	1	1	0	1
2500+	40	22	18	23	13	10	15	8	7	2	1	1
2500-2999	15	7	8	9	4	5	4	2	2	2	1	1
3000-3499	15	8	7	8	5	3	7	3	4	0	0	0
3500-3999	8	5	3	6	4	2	2	1	1	0	0	0
4000-4499	2	2	0	0	0	0	2	2	0	0	0	0
4500+	0	0	0	0	0	0	0	0	0	0	0	0
Unknown	0	0	0	0	0	0	0	0	0	0	0	0
Plural Births	96	53	43	65	35	30	29	17	12	2	1	1
<2500	94	52	42	63	34	29	29	17	12	2	1	1
<1500	91	49	42	60	31	29	29	17	12	2	1	1
<500	52	30	22	30	17	13	22	13	9	0	0	0
500-999	35	18	17	26	13	13	7	4	3	2	1	1
1000-1499	4	1	3	4	1	3	0	0	0	0	0	0
1500-1999	2	2	0	2	2	0	0	0	0	0	0	0
2000-2499	1	1	0	1	1	0	0	0	0	0	0	0
2500+	2	1	1	2	1	1	0	0	0	0	0	0
2500-2999	2	1	1	2	1	1	0	0	0	0	0	0
3000-3499	0	0	0	0	0	0	0	0	0	0	0	0
3500-3999	0	0	0	0	0	0	0	0	0	0	0	0
4000-4499	0	0	0	0	0	0	0	0	0	0	0	0
4500+	0	0	0	0	0	0	0	0	0	0	0	0
Unknown	0	0	0	0	0	0	0	0	0	0	0	0

Note:

1. Neonatal deaths refer to deaths to children under 28 days of age.

NEOPLBW

Source:

Delaware Health Statistics Center

TABLE E-11
RANKING OF FIVE-YEAR AVERAGE INFANT MORTALITY RATES

U.S., 50 STATES AND DISTRICT OF COLUMBIA, 1998-2002

State	All Races		White		Black	
	Rate	Rank	Rate	Rank	Rate	Rank
Alabama	9.6	3	7.0	3 *	15.2	24
Alaska**	6.4	36 *	5.0	46 *	11.9	45
Arizona	6.8	30 *	6.3	16 *	18.5	4
Arkansas	8.4	10	7.0	3 *	13.6	32 *
California	5.5	46 *	5.1	45	13.1	36 *
Colorado	6.3	38 *	5.8	29 *	17.1	9
Connecticut	6.5	35	5.4	37 *	14.7	26 *
Delaware	9.2	6	6.9	6	16.7	13
District of Columbia	12.3	1	4.2	51	16.1	17
Florida	7.3	22 *	5.7	32	13.1	36 *
Georgia	8.5	9	6.0	25 *	13.6	32 *
Hawaii**	7.1	24 *	5.4	37 *	12.8	40
Idaho**	6.8	30 *	6.7	8 *	16.5	15
Illinois	8.1	12 *	6.2	20 *	16.9	10
Indiana	7.7	17 *	6.8	7	15.8	19 *
Iowa	5.9	42	5.6	33 *	16.8	11 *
Kansas	7.1	24 *	6.6	10	14.5	28
Kentucky	7.1	24 *	6.5	11 *	12.9	39
Louisiana	9.5	4	6.2	20 *	14.2	29
Maine**	5.3	48	5.2	41 *	22.0	2
Maryland	8.0	14	5.2	41 *	13.8	31
Massachusetts	5.0	50	4.6	50	9.3	48
Michigan	8.1	12 *	6.1	23 *	17.7	7 *
Minnesota	5.7	43 *	5.0	46 *	12.5	42
Mississippi	10.4	2	6.7	8 *	14.8	25
Missouri	7.7	17 *	6.2	20 *	16.8	11 *
Montana**	6.9	28 *	6.5	11 *	24.6	1
Nebraska	7.0	27	6.3	16 *	17.9	6
Nevada	6.4	36 *	5.6	33 *	15.8	19 *
New Hampshire**	4.9	51	4.9	49	9.0	49
New Jersey	6.3	38 *	5.0	46 *	13.5	34
New Mexico**	6.7	32 *	6.3	16 *	18.2	5
New York	6.2	40	5.3	40	10.4	47
North Carolina	8.7	7	6.3	16 *	16.0	18
North Dakota**	7.7	17 *	7.0	3 *	8.9	50
Ohio	7.9	15 *	6.5	11 *	16.2	16
Oklahoma	8.2	11	7.5	2	15.6	22
Oregon	5.6	45	5.5	35 *	11.7	46
Pennsylvania	7.3	22 *	6.0	25 *	15.5	23
Rhode Island	6.6	34	5.9	28	13.1	36 *
South Carolina	9.3	5	6.0	25 *	15.7	21
South Dakota**	7.5	20	6.1	23 *	18.6	3
Tennessee	8.6	8	6.5	11 *	16.6	14
Texas	6.1	41	5.4	37 *	12.2	43 *
Utah**	5.2	49	5.2	41 *	12.2	43 *
Vermont**	5.7	43 *	5.8	29 *	5.8	51
Virginia	7.4	21	5.5	35 *	14.1	30
Washington	5.5	46 *	5.2	41 *	12.7	41
West Virginia	7.9	15 *	7.7	1	14.7	26 *
Wisconsin	6.9	28 *	5.8	29 *	17.7	7 *
Wyoming**	6.7	32 *	6.4	15	13.2	35
United States	7.0		5.8		14.3	

Notes:

INFSTATE

1. *Indicates a tied rank.
2. **Rate and rank for the black population should be interpreted with caution since the rate is based on less than 50 infant deaths.
3. Infant mortality rates represent the number of deaths under one year of age per 1,000 live births.
4. Infant mortality rates in this table may not match rates in the Infant Mortality Section of this report due to different data sources.
5. It should be noted that rankings do not have particular value for identifying population risk groups or in suggesting appropriate strategies or policy initiatives.

Sources:

Delaware Health Statistics Center
National Center for Health Statistics

Figure E-6

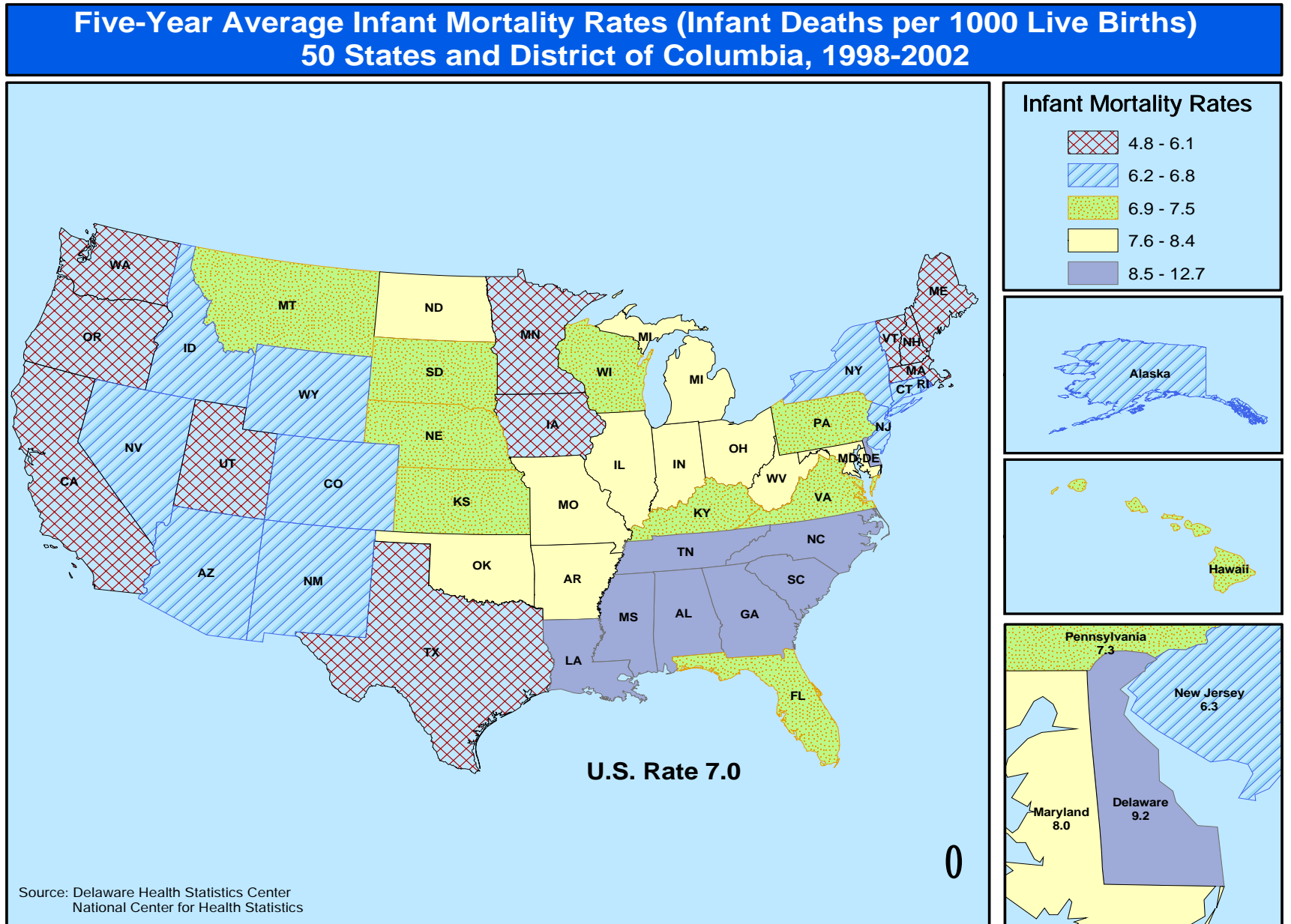


TABLE E-12
RANKING OF FIVE-YEAR AVERAGE NEONATAL MORTALITY RATES

U.S., 50 STATES AND DISTRICT OF COLUMBIA, 1998-2002

State	All Races		White		Black	
	Rate	Rank	Rate	Rank	Rate	Rank
Alabama	6.1	6 *	4.3	13 *	10.0	25 *
Alaska**	3.0	51	2.8	51	3.7	50
Arizona	4.4	30 *	4.2	15	11.2	13 *
Arkansas	4.9	21 *	4.1	16 *	8.2	38 *
California	3.7	44 *	3.5	42 *	8.2	38 *
Colorado	4.3	34	4.0	22 *	11.8	8 *
Connecticut	4.8	24 *	4.1	16 *	10.4	20
Delaware	6.6	2	4.8	2	12.7	4 *
District of Columbia	8.6	1	3.3	48 *	11.1	16
Florida	4.8	24 *	3.7	36 *	8.6	36
Georgia	5.8	8 *	4.0	22 *	9.4	30
Hawaii**	5.0	17 *	4.1	16 *	10.0	25 *
Idaho**	4.5	29	4.5	6 *	11.8	8 *
Illinois	5.5	11 *	4.4	8 *	10.7	18 *
Indiana	5.1	15 *	4.6	4 *	10.0	25 *
Iowa	3.8	41 *	3.6	39 *	11.0	17
Kansas	4.7	27 *	4.4	8 *	9.0	33
Kentucky	4.4	30 *	4.1	16 *	7.6	41
Louisiana	6.1	6 *	3.9	30 *	9.2	31 *
Maine**	3.9	39 *	3.8	33 *	17.3	2
Maryland	5.8	8 *	3.8	33 *	9.9	28
Massachusetts	3.8	41 *	3.5	42 *	7.1	44 *
Michigan	5.5	11 *	4.1	16 *	12.0	6
Minnesota	3.7	44 *	3.4	45 *	7.4	42
Mississippi	6.5	3 *	4.0	22 *	9.5	29
Missouri	5.0	17 *	4.0	22 *	11.2	13 *
Montana**	4.1	36 *	3.9	30 *	19.7	1
Nebraska	4.8	24 *	4.3	13 *	11.9	7
Nevada	3.7	44 *	3.3	48 *	8.5	37
New Hampshire**	3.6	48	3.5	42 *	5.6	49
New Jersey	4.4	30 *	3.6	39 *	9.2	31 *
New Mexico**	4.1	36 *	3.9	30 *	12.7	4 *
New York	4.4	30 *	3.8	33 *	7.1	44 *
North Carolina	6.2	5	4.4	8 *	11.6	10
North Dakota**	5.0	17 *	4.7	3	8.9	34 *
Ohio	5.3	13	4.4	8 *	10.7	18 *
Oklahoma	4.9	21 *	4.6	4 *	8.9	34 *
Oregon**	3.7	44 *	3.7	36 *	5.9	47
Pennsylvania	5.2	14	4.4	8 *	10.3	21
Rhode Island	4.9	21 *	4.5	6 *	10.1	22 *
South Carolina	6.5	3 *	4.0	22 *	11.3	12
South Dakota**	4.0	38	3.6	39 *	14.5	3
Tennessee	5.6	10	4.1	16 *	11.2	13 *
Texas	3.8	41 *	3.4	45 *	7.3	43
Utah**	3.4	49 *	3.4	45 *	5.8	48
Vermont**	3.9	39 *	4.0	22 *	0.0	51
Virginia	5.1	15 *	3.7	36 *	10.1	22 *
Washington	3.4	49 *	3.3	48 *	7.9	40
West Virginia**	5.0	17 *	4.8	1	10.1	22 *
Wisconsin	4.7	27 *	4.0	22 *	11.4	11
Wyoming**	4.2	35	4.0	22 *	6.6	46
United States	4.7		3.9		9.5	

Notes:

1. *Indicates a tied rank.
2. **Rate and rank for the black population should be interpreted with caution since the rate is based on less than 50 neonatal deaths.
3. Neonatal mortality rates represent the number of deaths under 28 days of age per 1,000 live births.
4. Neonatal mortality rates in this table may not match rates in the Infant Mortality Section of this report due to different data sources.
5. It should be noted that rankings do not have particular value for identifying population risk groups or in suggesting appropriate strategies or policy initiatives.

Sources:

Delaware Health Statistics Center
National Center for Health Statistics

Figure E-7

**Five-Year Average Neonatal Mortality Rates (Infant Deaths per 1000 Live Births)
50 States and District of Columbia, 1998-2002**

