

DELAWARE VITAL STATISTICS ANNUAL REPORT INFANT MORTALITY, 2011



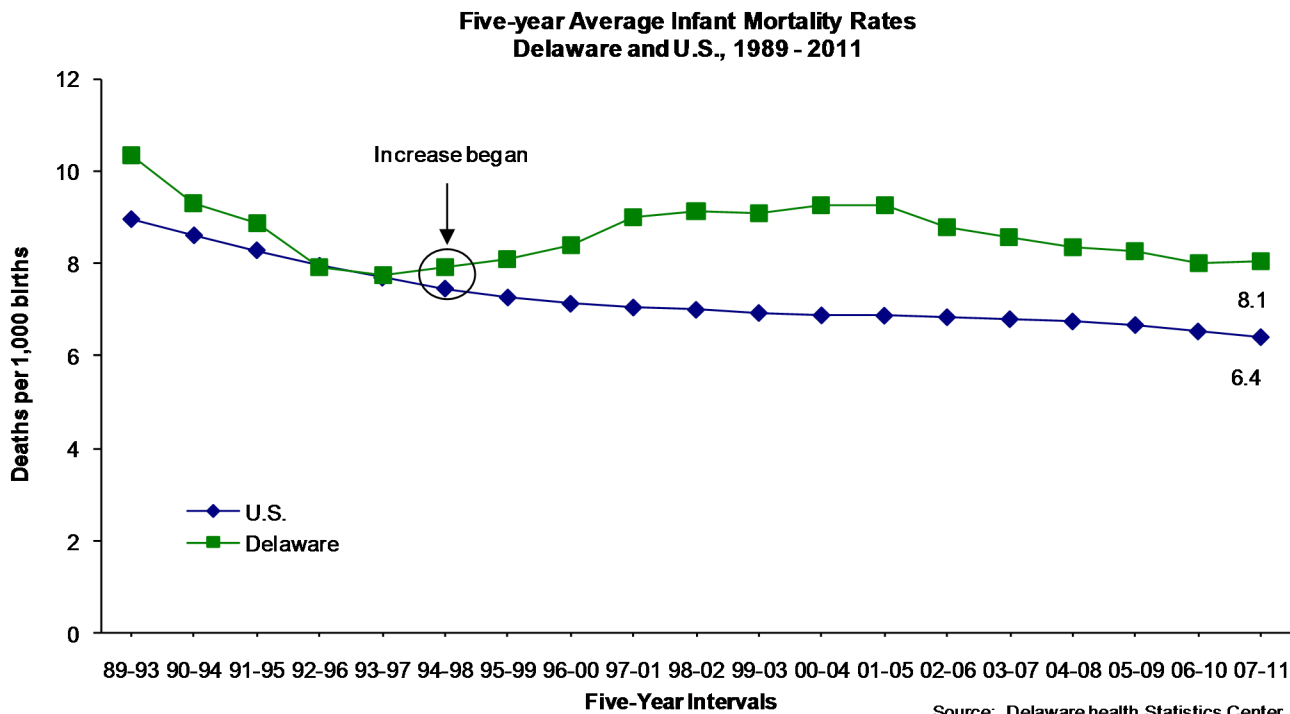
Suggested Citation:

*Delaware Health Statistics Center. Delaware Vital Statistics Annual Report, 2011.
Delaware Department of Health and Social Services, Division of Public Health: 2015.*

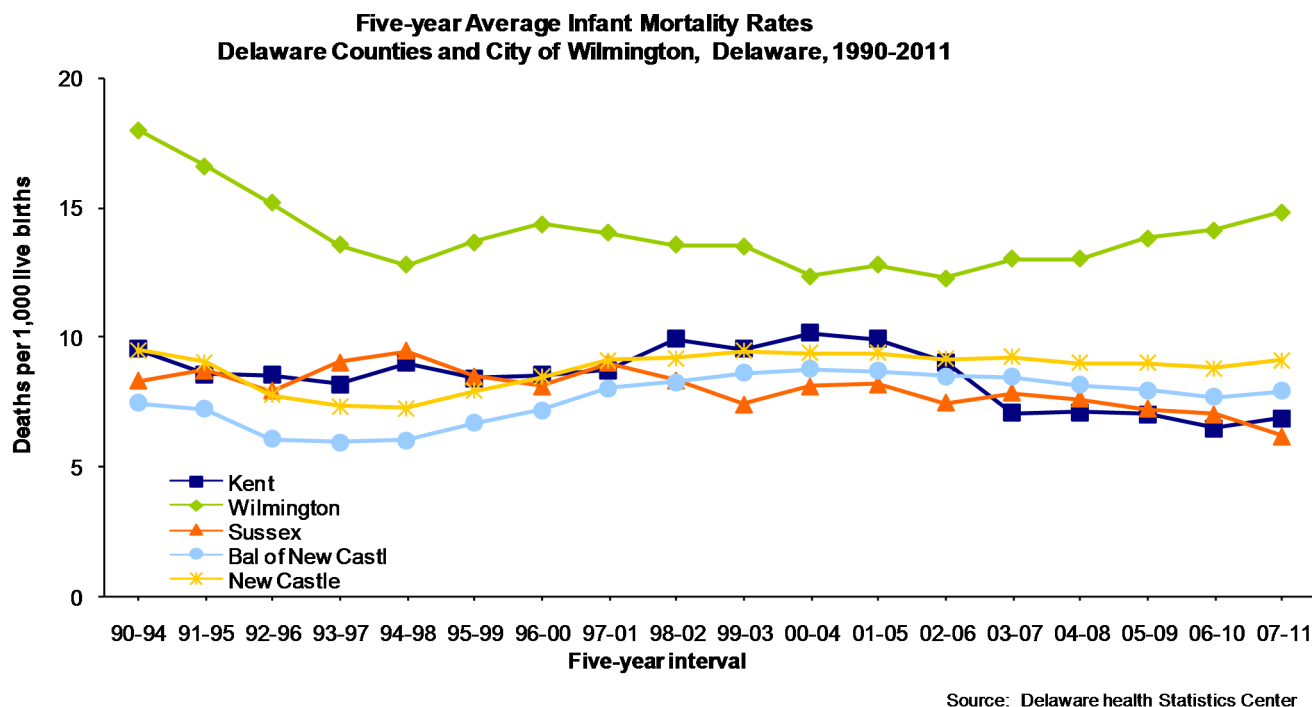
Intentionally left blank

INFANT MORTALITY

Between 2006-2010 and 2007-2011, Delaware's infant mortality rate (IMR) decreased to 8.1 infant deaths per 1,000 live births, resulting in a total decline of 12.9 percent from its 2000-2004 peak of 9.3 infant deaths per 1,000 live births. At 6.4, the U.S. rate remained significantly lower than the Delaware rate.

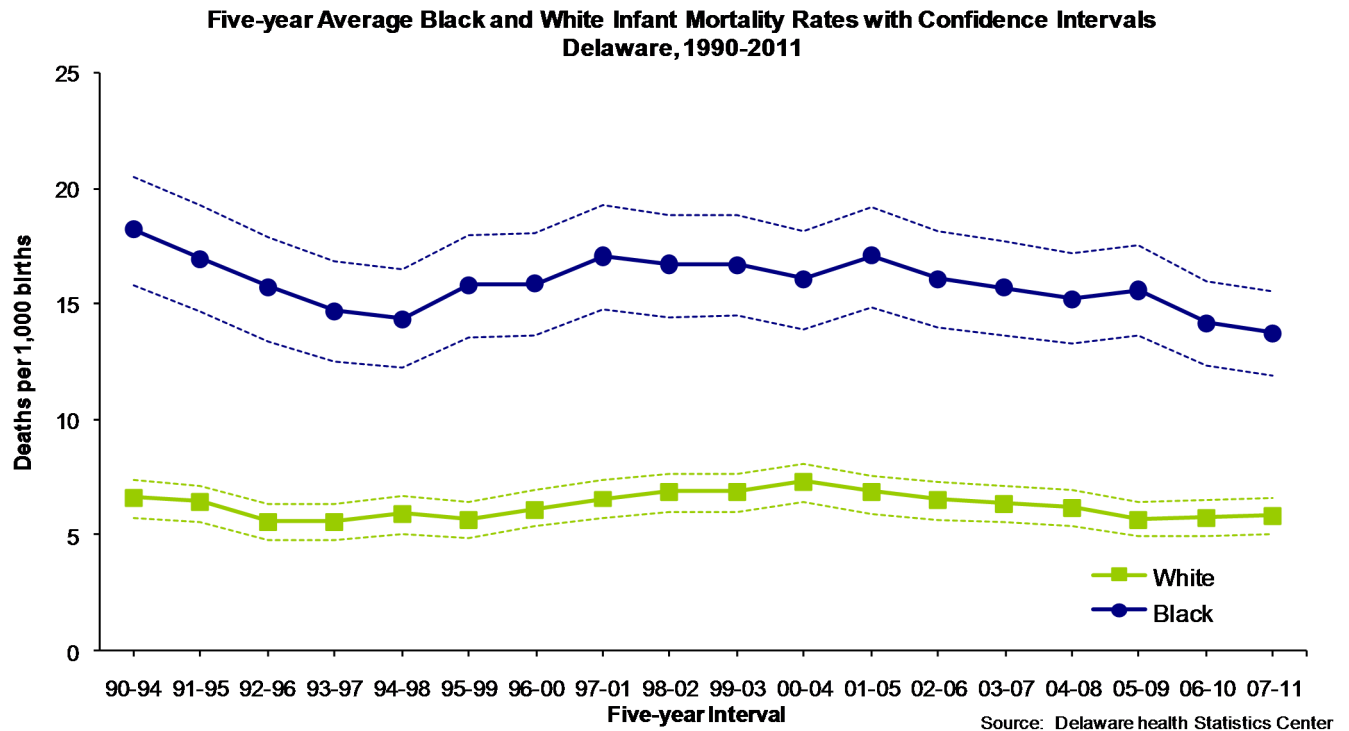


Wilmington's IMR increased for the fifth straight year. The combination of Wilmington's high IMR and a higher IMR in the balance of New Castle County, resulted in New Castle County's IMR being higher than the IMRs of both Kent and Sussex Counties. The decrease in IMR of Sussex from 2006-2010 to 2007-2011 resulted in Sussex's IMR being the lowest. In 2007-2011, the balance of New Castle County's IMR was 7.9, Wilmington's IMR was 14.8, Kent County's IMR was 6.9, and Sussex County's IMR was 6.2.

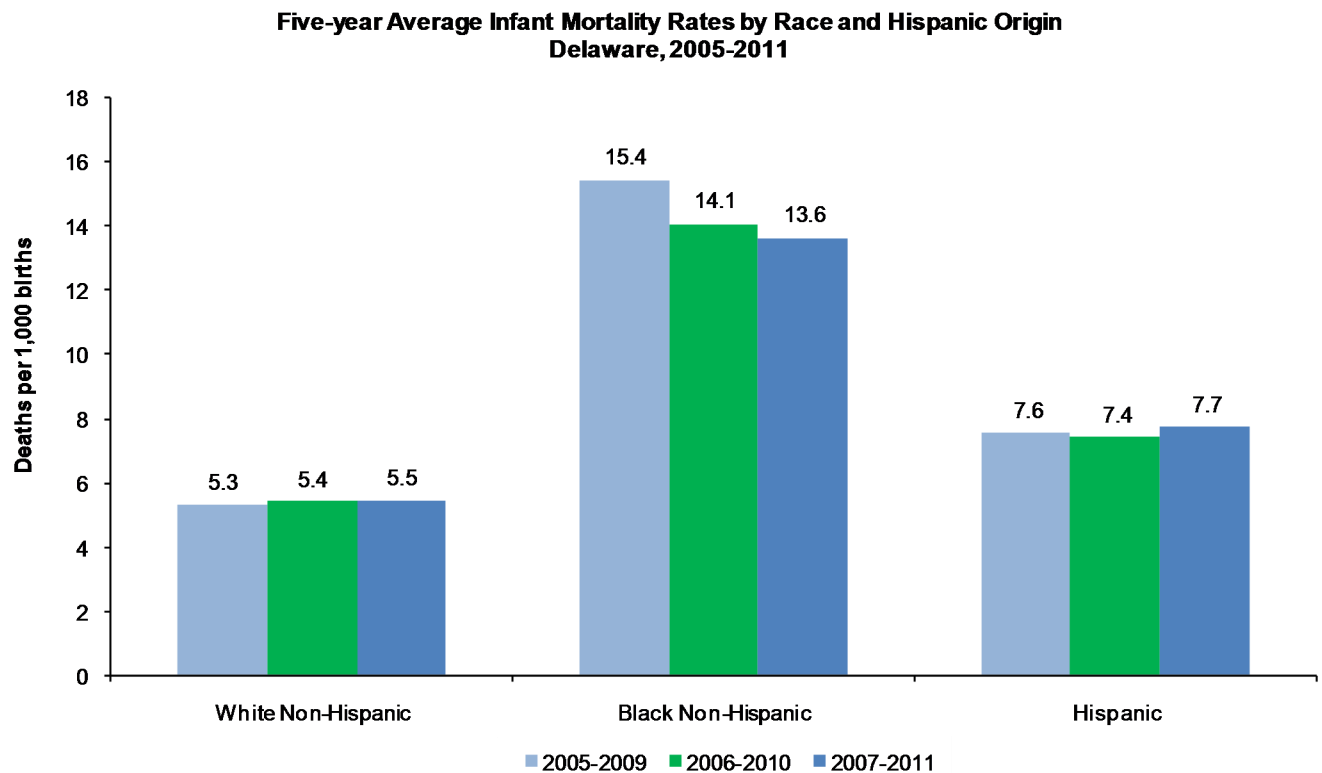


INFANT MORTALITY

Black infants experienced significantly higher mortality rates than white infants, and from 1990-1994 to 2007-2011, black IMRs were anywhere from 2.2 to 2.8 times that of white IMRs.



Significant disparities existed between black non-Hispanics and each of the two other groups, white non-Hispanics and Hispanics. Black non-Hispanics had the highest IMRs in all three time periods, and their rate of 13.6 in 2007-2011 was more than double the white non-Hispanic rate of 5.5 and nearly twice the Hispanic rate of 7.7 infant deaths per 1,000 live births.



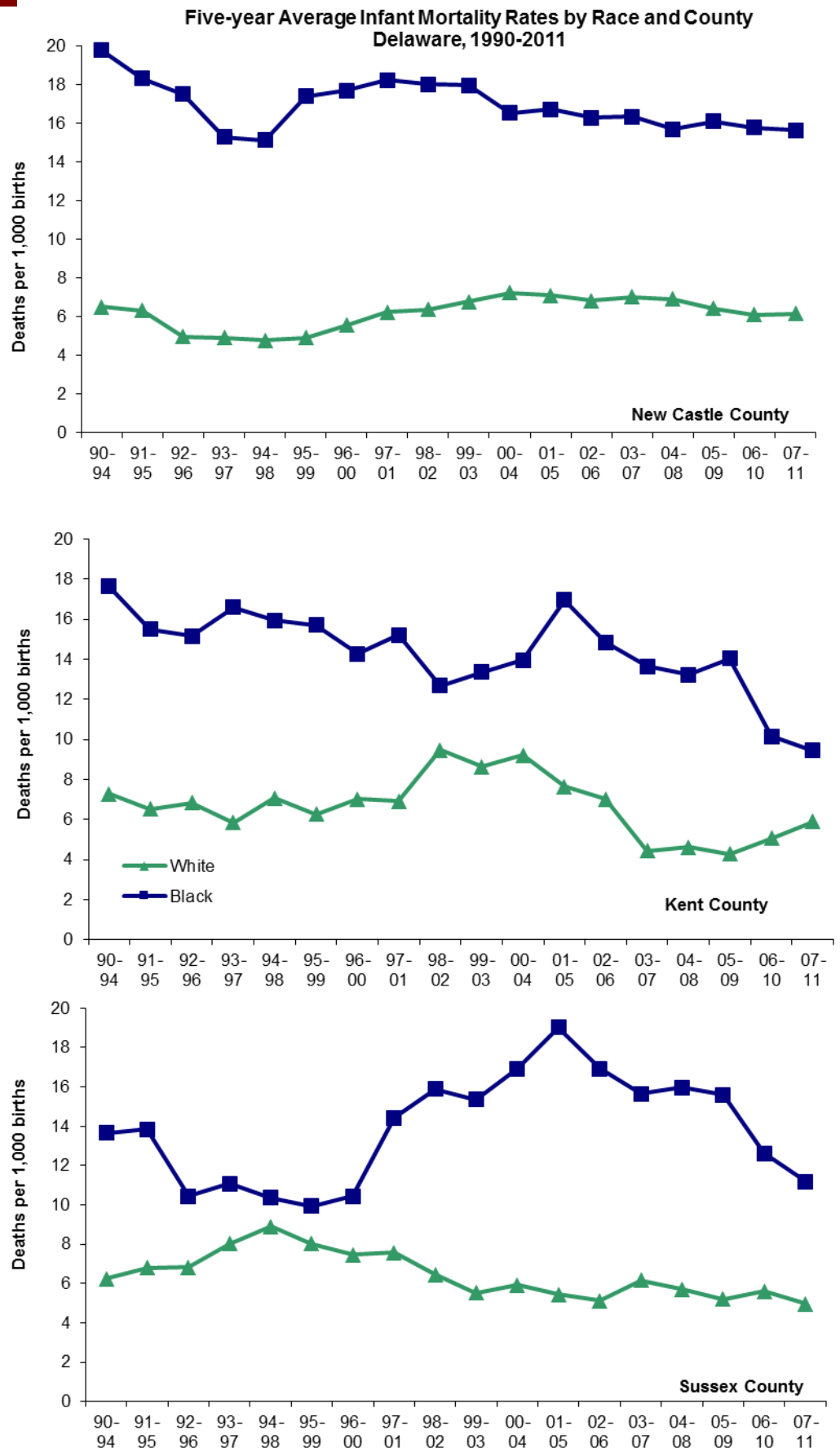
INFANT MORTALITY

In 2007-2011, New Castle County had the highest IMRs and Sussex County had the lowest.

Black IMRs in New Castle County have hovered around 16 since 2002-2006, and in 2007-2011 the black IMR was 15.6 infant deaths per 1,000 live births. White IMRs remained stable at 6.2 from 2006-2010 to 2007-2011.

Black IMRs in Kent County peaked at 17 in 2001-2005; the recent drop in 2007-2011 resulted in a 45 percent reduction in black IMRs between 2001-2005 and 2007-2011. Despite increasing from their 2005-2009 rate, the white IMR in Kent County was 22 percent lower in 2007-2011 than in 2001-2005.

Sussex County's black IMR dropped to 11.2 in 2007-2011, its lowest rate since 1996-2000, and a 41 percent reduction from the 2001-2005 peak of 19. Sussex County's white IMR has fluctuated between 5 and 6 since 1999-2003, and in 2007-2011 the rate moved down to 5.0 infant deaths per 1,000 births.



Source: Delaware Health Statistics Center

INFANT MORTALITY- Leading Causes of Death

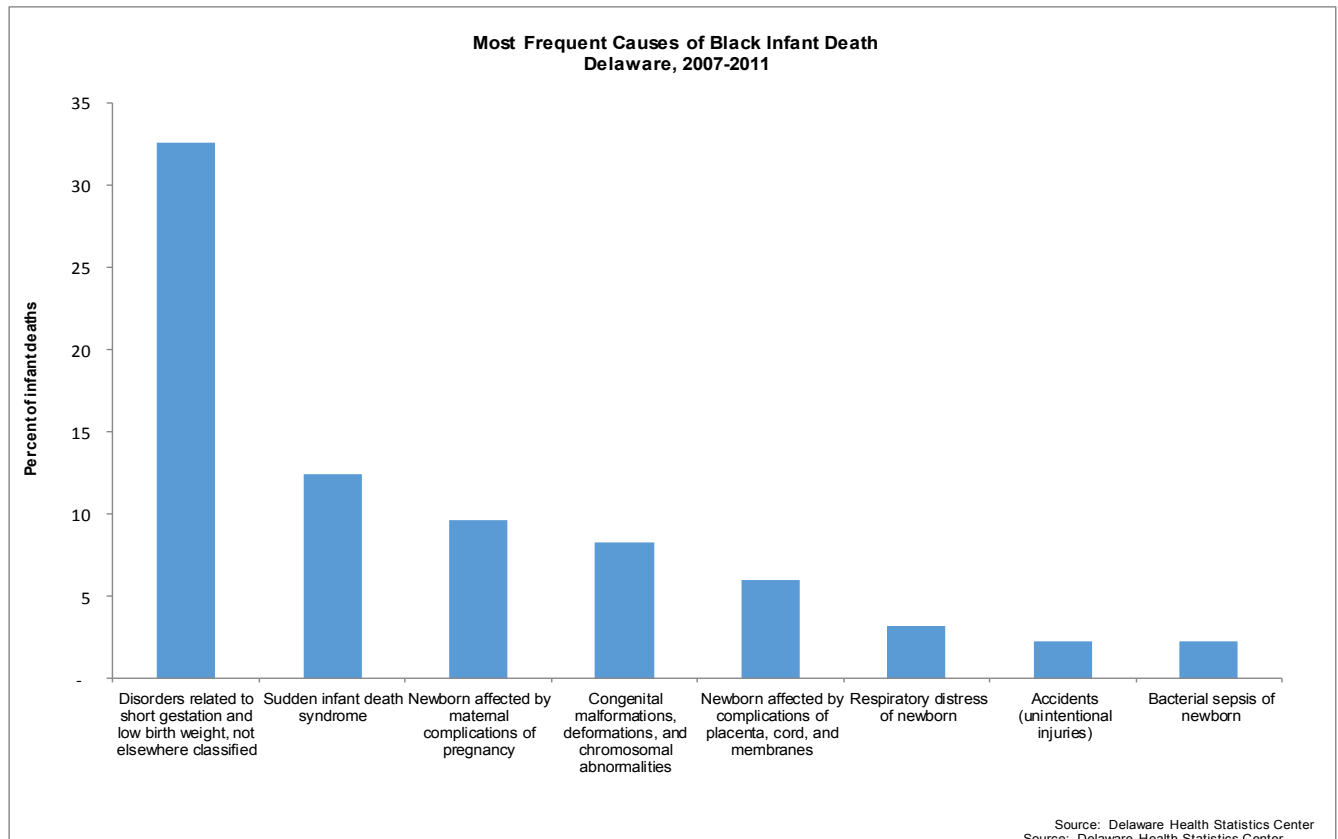
In 2007-2011 the five leading causes of infant death were:

- Disorders related to short gestation and fetal malnutrition (prematurity and low birthweight), which accounted for 24.5 percent of infant deaths.
- Congenital anomalies (birth defects), which accounted for 14.9 percent of infant deaths.
- Sudden infant death syndrome (SIDS), which accounted for 10.9 percent.
- Newborn affected by maternal complications of pregnancy, which accounted for 9.4 percent of infant deaths. Of the 44 deaths attributed to this cause, 40 were due to the newborn being affected by incompetent cervix and premature rupture of membranes.
- Newborn affected by complications of placenta, cord, and membranes (4.9 percent).

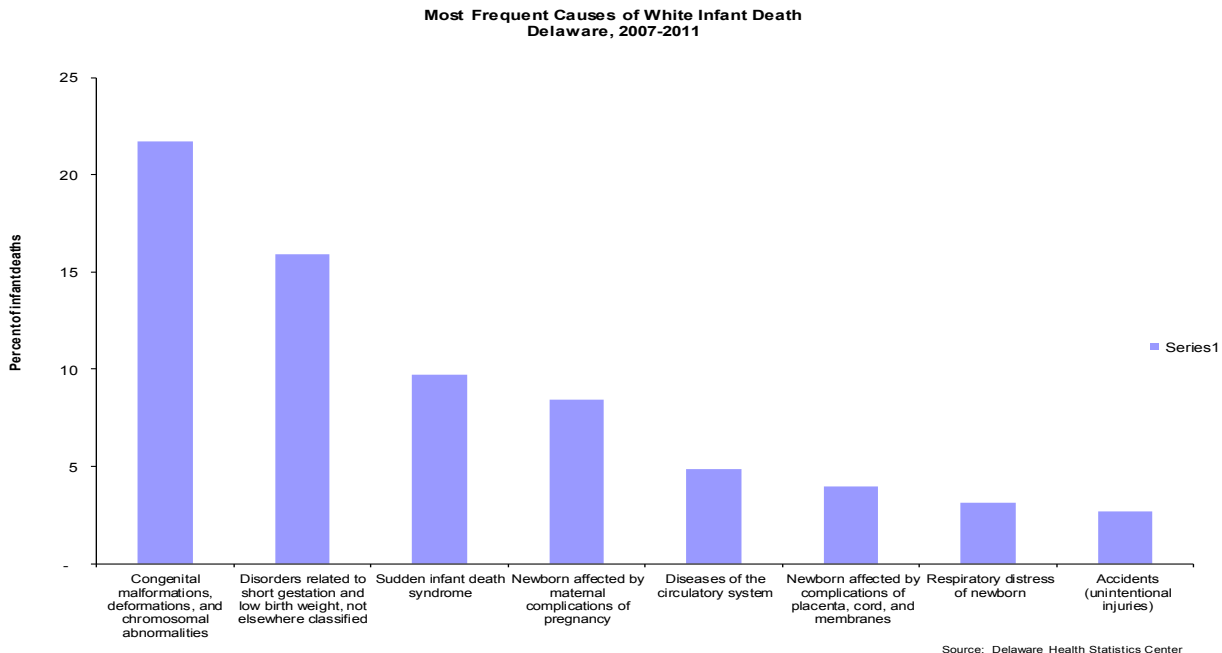
In sum, the five most common causes of infant death accounted for 64.6 percent, or 303 of the 469 total infant deaths.

The most frequent causes of death by race are shown in the graphs below and on the following page. SIDS and disorders related to short gestation and low birthweight were listed in the top three most frequent causes of death for both black and white infants.

Though the proportions of deaths by race were similar for many of the causes of death, notable exceptions were birth defects, disorders due to prematurity and low birthweight, and SIDS. While birth defects were responsible for 21.7 percent of all white infant deaths, they accounted for only 8.3 percent of black infant deaths. Conversely, infant deaths due to disorders related to prematurity and low birthweight and SIDS accounted for larger percentages of black infant deaths than white infant deaths (32.6 versus 15.9 percent for prematurity and low birthweight, and 12.4 versus 9.7 percent for SIDS).

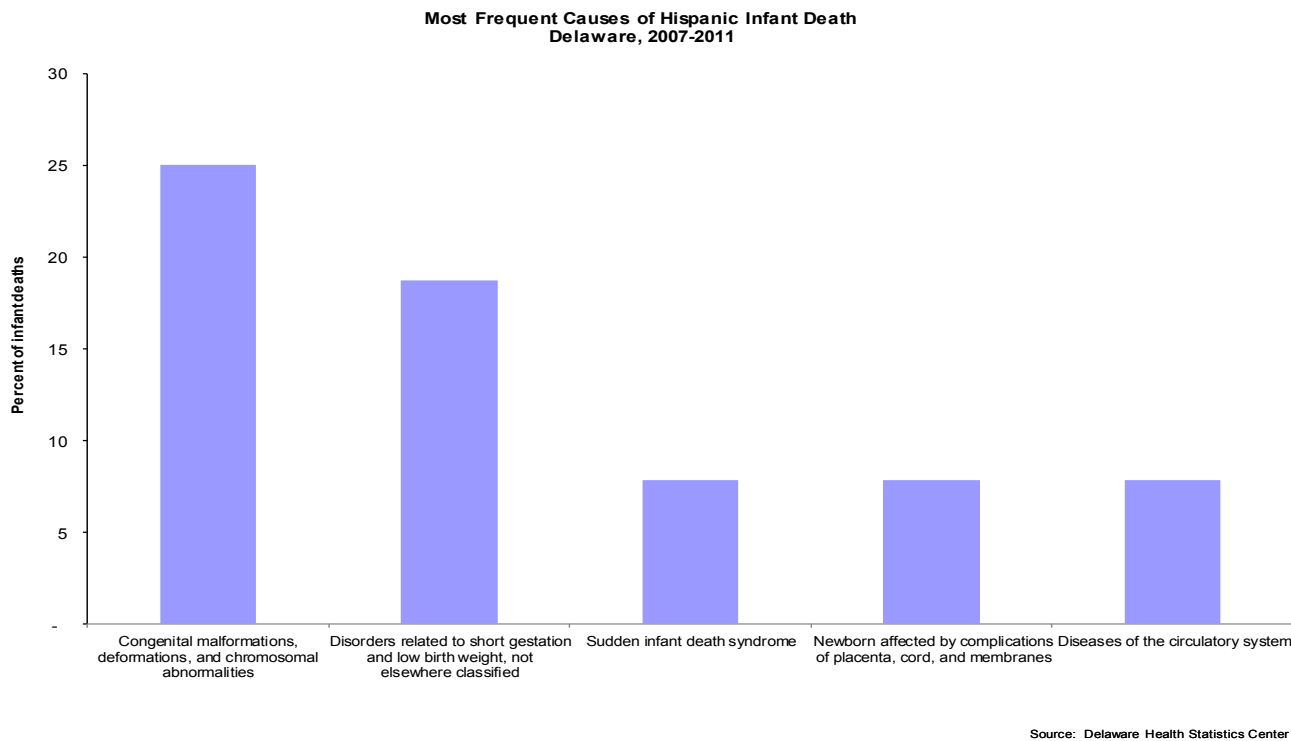


INFANT MORTALITY- Leading Causes of Death



In 1989-1993, Hispanics accounted for 3.6 percent of all live births and 3.4 percent of infant deaths; since that time the proportion of births to Hispanic mothers has quadrupled. In the most recent five-year period, 2007-2011, 14.3 percent of all live births were to Hispanic mothers, and 13.6 percent of all infant deaths were of Hispanic origin.

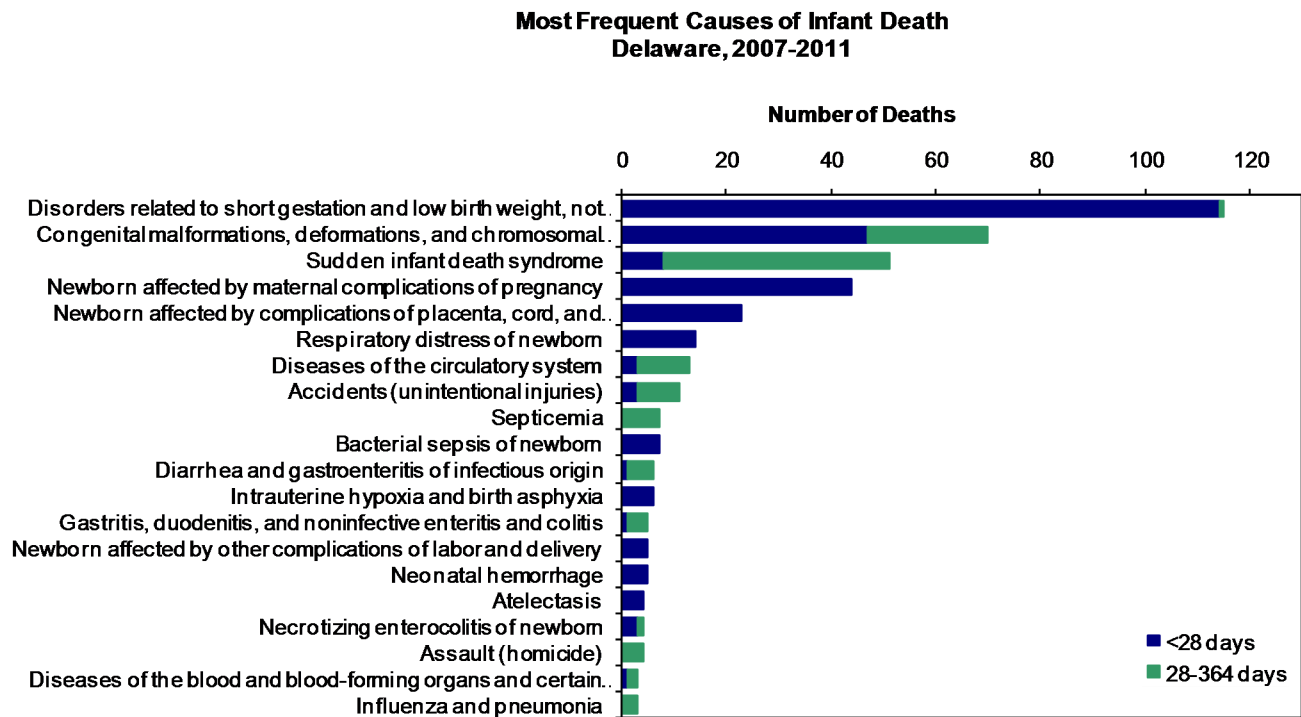
Two causes of death accounted for the greatest number of Hispanic infant deaths: birth defects and disorders related to prematurity and low birthweight.



INFANT MORTALITY - Leading Causes of Death

Approximately 91 percent of all infant deaths occurred within the first six months of life, 71 percent of all infant deaths occurred within the first 28 days of life, and 44 percent occurred within 24 hours of birth.

The graph below displays deaths by specific cause and the infant's age classification at death: neonatal (<28 days), or postneonatal (28-364 days).



Source: Delaware Health Statistics Center

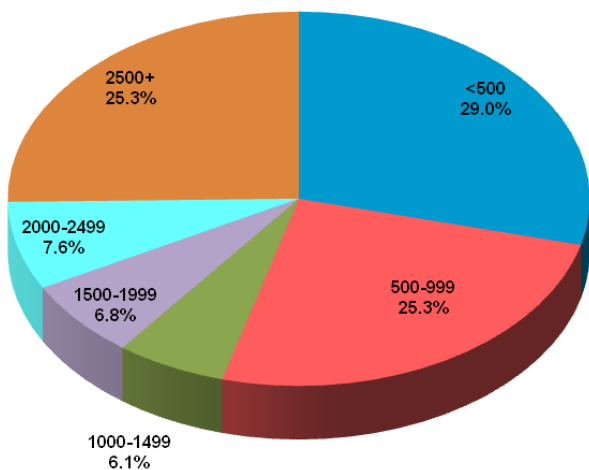
- Prematurity and low birthweight accounted for the greatest number of infant deaths in 2007-2011; all but one of these deaths occurred in the neonatal period.
- Sudden infant death syndrome (SIDS) was the only one of the top five causes of death that had the majority of deaths occurring in the postneonatal period, with a mean age at death of 108 days. Though fewer infants died in 2007-2011 compared to 2006-2010, more infants died due to SIDS, which remained to be the third leading cause of infant death in 2007-2011.
 - ⇒ 43 percent (22 out of 51) of the SIDS deaths were associated with co-sleeping and/or sleeping on soft surfaces, such as couches and adult beds.
- During that same time period there were 14 additional infant deaths, coded under a different cause of death, that were associated with co-sleeping and/or sleeping on a soft surface. In total, 7.6 percent of all infant deaths in 2007-2011 were associated with co-sleeping and/or unsafe sleep practices.

INFANT MORTALITY - Live Birth Cohort

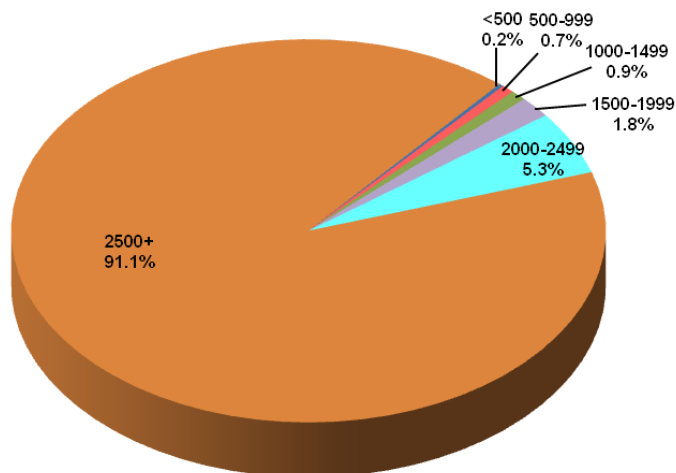
Though only 1 percent of all live births in 2006-2010 were infants weighing less than 1000 grams, they accounted for over half (54 percent) of all infant deaths. In total, 9 percent of all live births in 2006-2010 were infants of low birthweight (under 2500 grams) and 74 percent of infant deaths were low birthweight.

Distribution by Birthweight, Delaware Live Birth Cohort, 2006-2010

Infant Deaths



Live Births



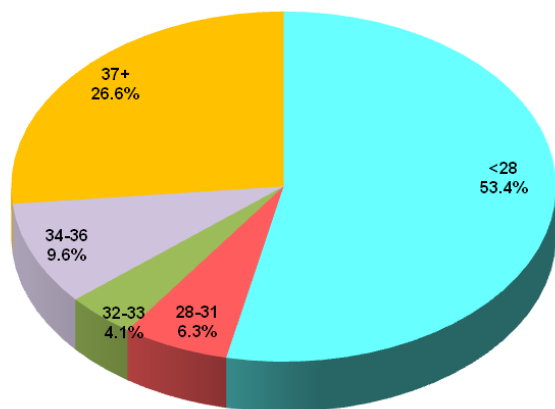
Source: Delaware Health Statistics Center

Gestation and infant death demonstrated the same relationship as birthweight and infant death; infants born at the youngest gestational age made up a very small percentage of live births, yet they accounted for the majority of infant deaths.

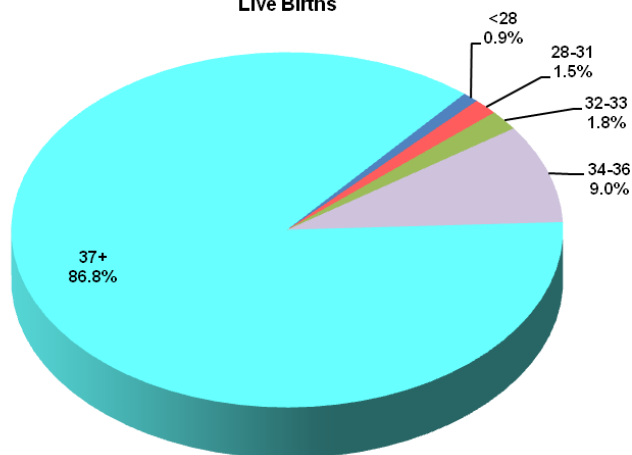
One percent of live births in 2006-2010 were less than 28 weeks gestation at birth, but they accounted for 53 percent of all infant deaths. In total, 13 percent of all live births in 2006-2010 were born preterm (<37 weeks of gestation) and 73 percent of infant deaths were born preterm.

Distribution by Gestation, Delaware Live Birth Cohort, 2006-2010

Infant Deaths



Live Births



Source: Delaware Health Statistics Center

Source: Delaware Health Statistics Center

INFANT MORTALITY - Live Birth Cohort

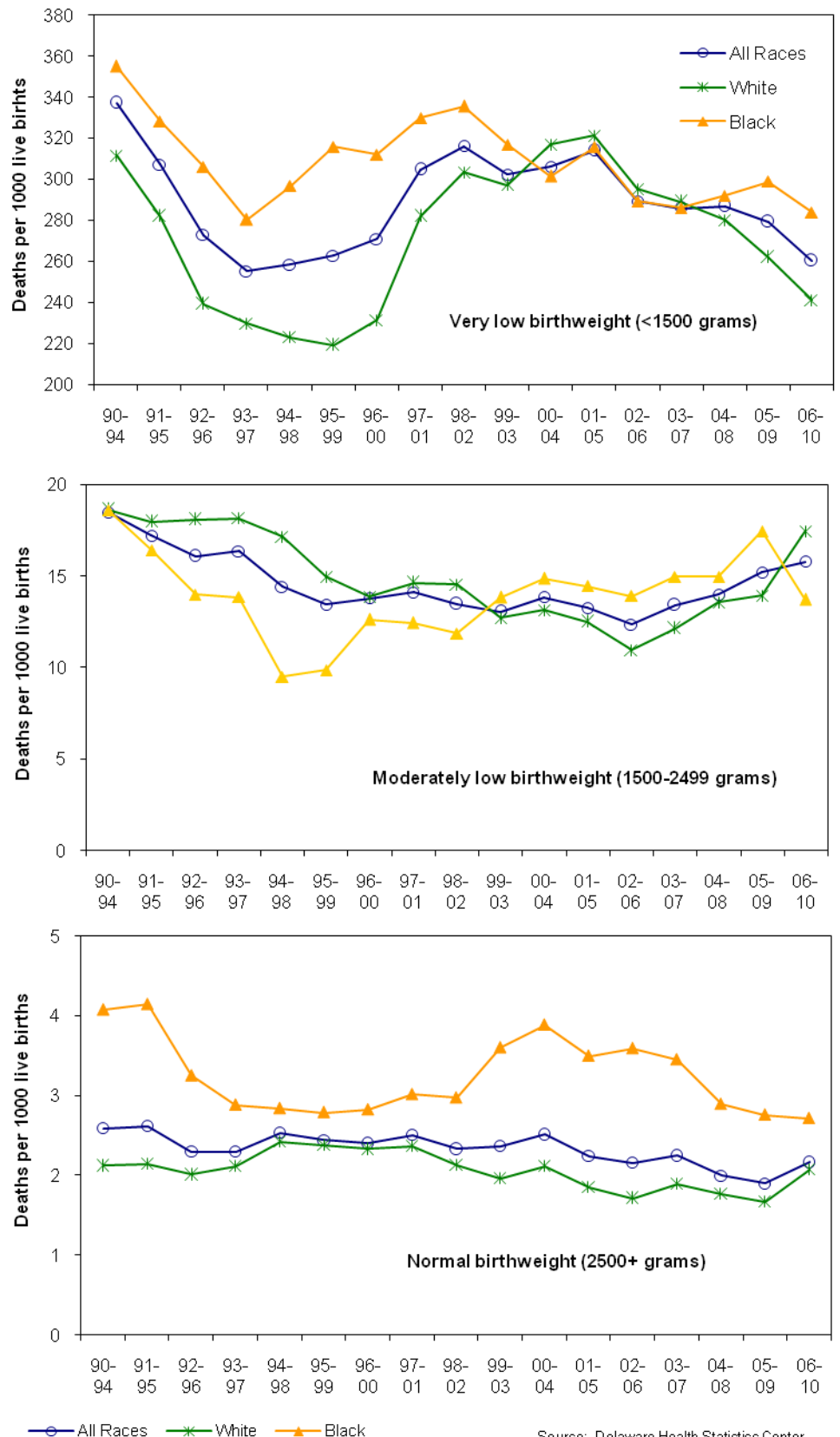
Birthweight and gestation are considered to be the most important predictors of infant health and mortality risk. Infants born too small or too early have a much greater risk of mortality than those who reach a normal birthweight (2500+ grams) or full-term gestation (37+ weeks).

The IMR for very low birthweight (VLBW) black infants decreased in the most recent year after increasing for two years while the IMR for VLBW white infants decreased for the fifth straight year. In 2006-2010, IMRs for white and black VLBW infants were 241 and 284 infant deaths per 1,000 live births.

IMRs for moderately LBW infants of all races rose 14 percent between 2000-2004 and 2006-2010; during that time, white IMRs increased 32 percent while the black IMR reversed direction in 2006-2010, which made their rates lower than the white rates (13.7 vs 17.5).

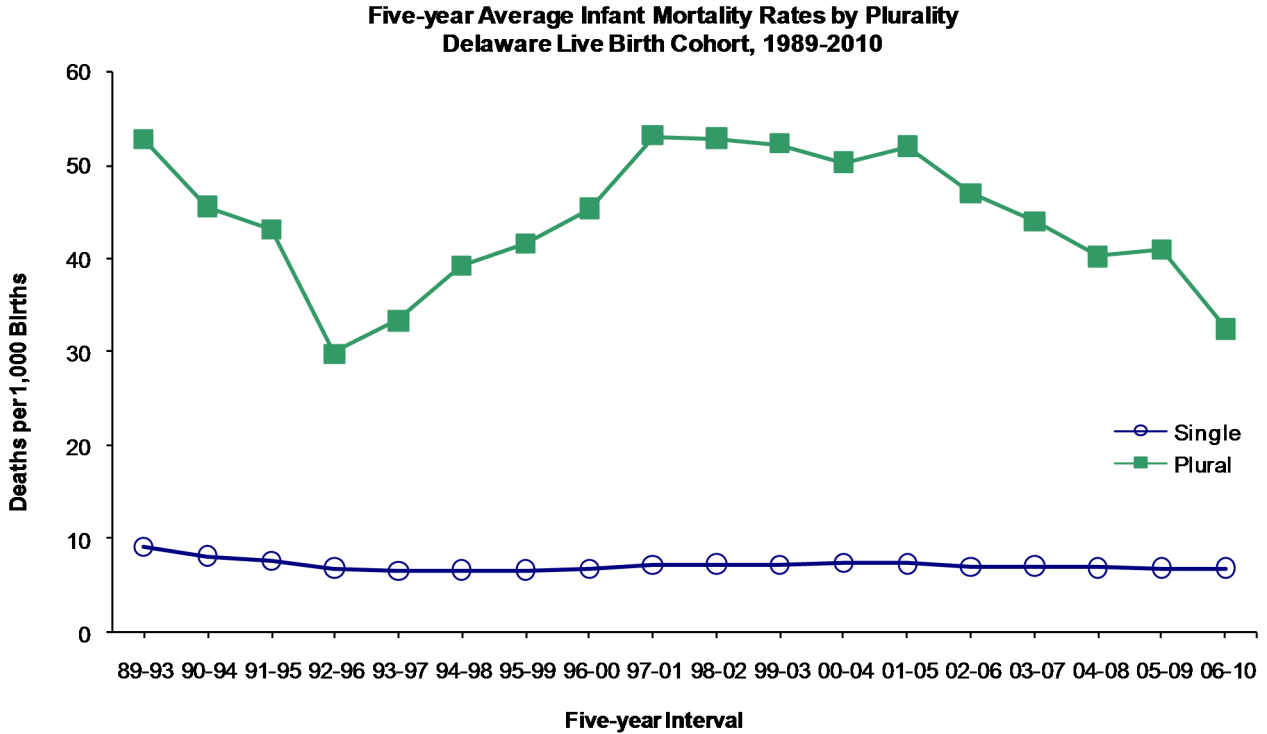
As a result of the 24% increase from 2005-2009 to 2006-2010, IMRs for normal birthweight white infants experienced no net change since 2000-2004 while the IMRs for black infants declined 31 percent between 2000-2004 and 2006-2010. The divergent movement in black and white rates in the most recent year narrowed the black/white disparity ratio. In 2006-2010, the black IMR for normal birthweight infant was 2.7, versus 2.1 for white infant of normal birthweight.

Five-year Average Infant Mortality Rate by Birthweight and Race
Delaware, 1990-2010 Live Birth Cohort

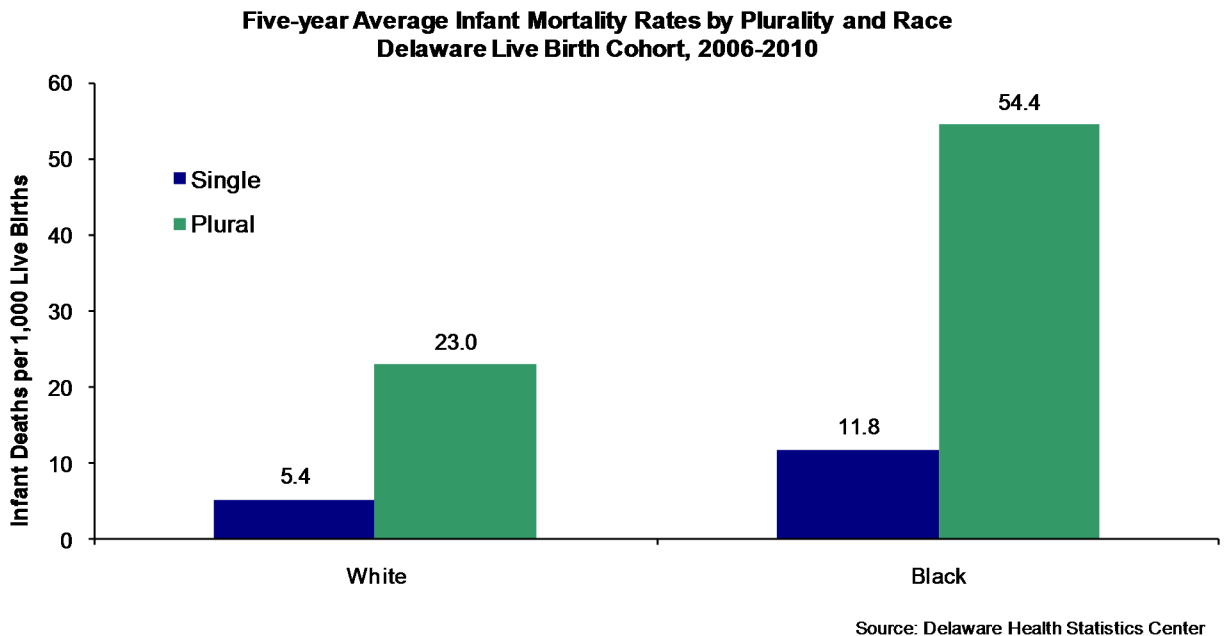


INFANT MORTALITY - Live Birth Cohort

From 1992-1996 to 1997-2001, IMRs for plural births increased 77 percent, to 53.1 deaths per 1000 live births; during the same time, IMRs for singleton births increased by 4 percent. Since then, plural IMRs have decreased 39 percent, with the majority of the decrease occurring in the most recent time period. IMRs for singleton births experienced a slight decrease of 4 percent. In 2006-2010, the infant mortality rate for plural births was 4.6 times that of singleton births (33 versus 7).



The magnitude of difference between singleton and plural IMRs remained the same regardless of race, though rates for black infants, both singleton and plural, were more than double those of white infants.



Intentionally left blank

TABLE E-1
NUMBER OF INFANT DEATHS BY RACE

U.S., DELAWARE, COUNTIES AND CITY OF WILMINGTON, 1994-2011

Area/ Race	1994	1995	1996	1997	1998	1999	2000	2001	2002	2003	2004	2005	2006	2007	2008	2009	2010	2011
U.S.																		
All Races	31710	29583	28237	28045	28371	27937	28035	27568	28034	28025	27936	28440	28527	29138	28059	26412	24586	23910*
White	20504	19490	18749	18539	18561	18067	18144	17955	18369	18440	18231	18514	18403	18807	18164	16817	15954	15438*
Black	10072	9118	8490	8496	8726	8822	8771	8498	8524	8402	8494	8695	8858	8944	8543	8312	7401	7234*
Other	1134	975	998	1010	1084	1048	1120	1115	1141	1183	1211	1231	1266	1387	1352	1283	1231	1238*
Delaware																		
All Races	70	79	77	81	103	81	102	114	96	107	97	106	99	91	101	91	88	98
White	40	46	43	42	54	31	65	60	57	53	51	48	50	52	49	30	47	48
Black	27	32	32	36	49	49	37	53	35	53	44	55	44	38	52	54	36	38
Other	3	1	2	3	0	1	0	1	4	1	2	3	5	1	0	7	5	12
Kent																		
All Races	15	18	17	14	18	10	21	19	27	16	17	21	13	9	18	18	15	17
White	10	10	11	4	13	4	16	10	22	8	8	6	7	4	10	6	12	13
Black	5	7	6	10	5	6	5	9	5	8	8	14	5	4	8	12	3	3
Other	0	1	0	0	0	0	0	0	0	0	1	1	1	1	0	0	0	1
New Castle																		
All Races	37	45	48	48	65	61	67	72	55	78	60	68	68	60	70	57	58	74
White	20	24	21	26	27	22	40	37	30	37	33	35	31	33	32	18	24	29
Black	15	21	26	20	38	38	27	35	22	40	27	31	35	27	38	34	30	34
Other	2	0	1	2	0	1	0	0	3	1	0	2	2	0	0	5	4	11
Wilmington																		
All Races	15	11	19	14	18	20	16	17	12	18	12	18	16	17	19	18	18	17
White	3	2	1	4	2	4	4	2	2	4	4	3	2	3	7	0	4	2
Black	11	9	18	10	16	16	12	15	10	14	8	15	14	14	12	16	13	15
Other	1	0	0	0	0	0	0	0	0	0	0	0	0	0	0	2	1	0
Balance of NC County																		
All Races	22	34	29	34	47	41	51	55	43	60	48	50	52	43	51	39	40	57
White	17	22	20	22	25	18	36	35	28	33	29	32	29	30	25	18	20	27
Black	4	12	8	10	22	22	15	20	12	26	19	16	21	13	26	18	17	19
Other	1	0	1	2	0	1	0	0	3	1	0	2	2	0	0	3	3	11
Sussex																		
All Races	18	16	12	19	20	10	14	23	14	13	20	17	18	22	13	16	15	7
White	10	12	11	12	14	5	9	13	5	8	10	7	12	15	7	6	11	6
Black	7	4	0	6	6	5	5	9	8	5	9	10	4	7	6	8	3	1
Other	1	0	1	1	0	0	0	1	1	0	1	0	2	0	0	2	1	0

Notes:

- *Based on NCHS estimate.
- Infant deaths refer to deaths to children under one year of age.

Sources:

National Center for Health Statistics
Delaware Health Statistics Center

INFANT1

TABLE E-2
NUMBER OF NEONATAL DEATHS BY RACE

U.S., DELAWARE, COUNTIES AND CITY OF WILMINGTON, 1994-2011

Area/ Race	1994	1995	1996	1997	1998	1999	2000	2001	2002	2003	2004	2005	2006	2007	2008	2009	2010	2011
U.S.																		
All Races	20250	19155	18326	18524	18918	18728	18776	18265	18749	18893	18593	18770	18989	19058	18211	17255	16188	15954*
White	13100	12644	12252	12269	12406	12164	12201	12013	12354	12495	12238	12239	12302	12333	11843	11054	10612	10422*
Black	6499	5940	5483	5637	5824	5920	5843	5585	5646	5640	5495	5740	5876	5842	5523	5374	4769	4719*
Other	651	571	591	618	688	644	732	667	749	758	860	791	811	883	845	827	807	813*
Delaware																		
All Races	48	47	53	55	74	58	71	82	79	75	63	79	72	65	68	66	58	73
White	28	26	28	26	33	21	45	44	48	36	33	36	36	37	32	19	27	30
Black	18	20	24	27	41	37	26	37	28	38	28	40	33	28	36	40	26	35
Other	2	1	1	2	0	0	0	1	3	1	2	3	3	0	0	7	5	8
Kent																		
All Races	7	10	13	10	9	8	15	15	22	8	11	14	7	6	12	14	11	13
White	3	6	7	1	6	3	11	10	18	3	5	3	4	3	7	4	9	9
Black	4	3	6	9	3	5	4	5	4	5	5	10	3	3	5	10	2	3
Other	0	1	0	0	0	0	0	0	0	0	1	1	0	0	0	0	0	1
New Castle																		
All Races	28	26	33	33	47	44	50	54	47	56	39	54	52	43	48	42	36	57
White	17	12	14	19	15	14	29	27	26	27	21	28	22	23	20	13	9	18
Black	9	14	18	13	32	30	21	27	19	28	18	24	28	20	28	24	23	32
Other	2	0	1	1	0	0	0	0	2	1	0	2	2	0	0	5	4	7
Wilmington																		
All Races	10	6	14	6	12	14	13	14	9	10	9	15	12	10	10	14	10	14
White	3	0	1	3	1	2	4	1	1	1	3	3	1	1	3	0	0	1
Black	6	6	13	3	11	12	9	13	8	9	6	12	11	9	7	12	9	13
Other	1	0	0	0	0	0	0	0	0	0	0	0	0	0	0	2	1	0
Balance of NC County																		
All Races	18	20	19	27	35	30	37	40	38	46	30	39	40	33	38	28	26	43
White	14	12	13	16	14	12	25	26	25	26	18	25	21	22	17	13	9	17
Black	3	8	5	10	21	18	12	14	11	19	12	12	17	11	21	12	14	19
Other	1	0	1	1	0	0	0	0	2	1	0	2	2	0	0	3	3	7
Sussex																		
All Races	13	11	7	12	18	6	6	13	10	11	13	11	13	16	8	10	11	3
White	8	8	7	6	12	4	5	7	4	6	7	5	10	11	5	2	9	3
Black	5	3	0	5	6	2	1	5	5	5	5	6	2	5	3	6	1	0
Other	0	0	0	1	0	0	0	1	1	0	1	0	1	0	0	2	1	0

Notes:

- *Based on NCHS estimate.
- Neonatal deaths refer to deaths of children under 28 days of age.

Sources:

National Center for Health Statistics

INFANT2

TABLE E-3
NUMBER OF POSTNEONATAL DEATHS BY RACE

U.S., DELAWARE, COUNTIES AND CITY OF WILMINGTON, 1994-2011

Area/ Race	1994	1995	1996	1997	1998	1999	2000	2001	2002	2003	2004	2005	2006	2007	2008	2009	2010	2011
U.S.																		
All Races	11460	10428	9911	9521	9453	9209	9259	9303	9285	9132	9343	9670	9538	10080	9848	9157	8398	7956*
White	7404	6846	6497	6270	6155	5903	5943	5942	6015	5945	5993	6275	6101	6474	6321	5763	5342	5016*
Black	3573	3178	3007	2859	2902	2902	2928	2913	2878	2762	2999	2955	2982	3102	3020	2938	2632	2515*
Other	483	404	407	392	396	404	388	448	392	425	351	440	455	504	507	456	424	425*
Delaware																		
All Races	22	32	24	26	29	23	31	32	17	32	34	27	27	26	33	25	30	25
White	12	20	15	16	21	10	20	16	9	17	18	12	14	15	17	11	20	18
Black	9	12	8	9	8	12	11	16	7	15	16	15	11	10	16	14	10	3
Other	1	0	1	1	0	1	0	0	1	0	0	0	2	1	0	0	0	4
Kent																		
All Races	8	8	4	4	9	2	6	4	5	8	6	7	6	3	6	4	4	4
White	7	4	4	3	7	1	5	0	4	5	3	3	3	1	3	2	3	4
Black	1	4	0	1	2	1	1	4	1	3	3	4	2	1	3	2	1	0
Other	0	0	0	0	0	0	0	0	0	0	0	0	1	1	0	0	0	0
New Castle																		
All Races	9	19	15	15	18	17	17	18	8	22	21	14	16	17	22	15	22	17
White	3	12	7	7	12	8	11	10	4	10	12	7	9	10	12	5	15	11
Black	6	7	8	7	6	8	6	8	3	12	9	7	7	7	10	10	7	2
Other	0	0	0	1	0	1	0	0	1	0	0	0	0	0	0	0	0	4
Wilmington																		
All Races	5	5	5	8	6	6	3	3	3	8	3	3	4	7	9	4	8	3
White	0	2	0	1	1	2	0	1	1	3	1	0	1	2	4	0	4	1
Black	5	3	5	7	5	4	3	2	2	5	2	3	3	5	5	4	4	2
Other	0	0	0	0	0	0	0	0	0	0	0	0	0	0	0	0	0	0
Balance of NC County																		
All Races	4	14	10	7	12	11	14	15	5	14	18	11	12	10	13	11	14	14
White	3	10	7	6	11	6	11	9	3	7	11	7	8	8	8	5	11	10
Black	1	4	3	0	1	4	3	6	1	7	7	4	4	2	5	6	3	0
Other	0	0	0	1	0	1	0	0	1	0	0	0	0	0	0	0	0	4
Sussex																		
All Races	5	5	5	7	2	4	8	10	4	2	7	6	5	6	5	6	4	4
White	2	4	4	6	2	1	4	6	1	2	3	2	2	4	2	4	2	3
Black	2	1	0	1	0	3	4	4	3	0	4	4	2	2	3	2	2	1
Other	1	0	1	0	0	0	0	0	0	0	0	0	1	0	0	0	0	0

Notes:

1. *Based on NCHS estimate.
2. Postneonatal deaths refer to deaths of children 28 to 364 days of age.

Sources:

National Center for Health Statistics
Delaware Health Statistics Center

INFANT3

TABLE E- 4
FIVE-YEAR AVERAGE INFANT MORTALITY RATES BY RACE
U.S., DELAWARE, COUNTIES AND CITY OF WILMINGTON, 1991-2011

Area/ Race	1991 -1995	1992 -1996	1993 -1997	1994 -1998	1995 -1999	1996 -2000	1997 -2001	1998 -2002	1999 -2003	2000 -2004	2001 -2005	2002 -2006	2003 -2007	2004 -2008	2005 -2009	2006 -2010	2007 -2011
U.S.																	
All Races	8.3	8.0	7.7	7.5	7.3	7.1	7.0	7.0	6.9	6.9	6.9	6.8	6.8	6.7	6.7	6.5	6.4
White	6.8	6.5	6.4	6.2	6.0	5.9	5.8	5.8	5.7	5.7	5.7	5.7	5.7	5.6	5.6	5.5	5.4
Black	16.4	15.8	15.3	14.8	14.6	14.4	14.2	14.3	14.2	14.0	14.0	13.8	13.6	13.3	13.1	12.7	12.4
Delaware																	
All Races	8.9	7.9	7.8	7.9	8.1+	8.4+	9.0+	9.2+	9.1+	9.3+	9.3+	8.8+	8.6+	8.4+	8.3+	8.0+	8.1+
White	6.4	5.6-	5.6	5.9	5.7	6.2	6.6	6.9+	6.9+	7.3+	6.9+	6.5+	6.4	6.2	5.7	5.8	5.8
Black	17.0	15.8	14.7	14.4	15.8	15.9	17.1+	16.7+	16.7+	16.1	17.1+	16.1+	15.7+	15.3	15.6+	14.2	13.8
Kent																	
All Races	8.6	8.6	8.2	9.0	8.4	8.6	8.7	9.9	9.5	10.2	10.0	9.1	7.1	7.1	7.1	6.5	6.9
White	6.5	6.8	5.8	7.1	6.3	7.0	6.9	9.5	8.6	9.2	7.6	7.0	4.4	4.6	4.3	5.1	5.9
Black	15.5	15.2	16.6	15.9	15.7	14.3	15.2	12.7	13.4	13.9	17.0	14.9	13.6	13.2	14.0	10.2	9.4
New Castle																	
All Races	9.0	7.8	7.3	7.3	7.9	8.5	9.1	9.2	9.5	9.4	9.4	9.2	9.2	9.0	9.0	8.8	9.1
White	6.3	5.0	4.9	4.8	4.9	5.6	6.2	6.4	6.8	7.3	7.1	6.8	7.0	6.9	6.4	6.1	6.2
Black	18.3	17.5	15.3	15.1	17.4	17.7	18.2	18.0	18.0	16.5	16.7	16.3	16.3	15.7	16.1	15.8	15.6
Wilmington																	
All Races	16.6	15.2	13.6	12.8	13.7	14.4	14.0	13.5	13.5	12.4	12.8	12.3	13.0	13.0	13.8	14.1	14.8
White	10.1	---	---	---	---	---	---	---	---	---	---	---	---	---	---	---	---
Black	20.4	20.5	17.8	16.8	18.0	18.7	18.0	17.9	17.6	15.9	17.0	16.3	17.3	16.3	18.0	18.0	19.1
Balance of NC County																	
All Races	7.2	6.1	5.9	6.0	6.7	7.2	8.1	8.3	8.6	8.8	8.7	8.5	8.5	8.2	8.0	7.7	7.9
White	5.9	4.8	4.8	4.7	4.8	5.4	6.1	6.4	6.8	7.3	7.2	6.9	7.0	6.8	6.4	6.0	6.0
Black	16.0	14.4	12.9	13.6	16.8	16.8	18.5	18.1	18.2	17.0	16.6	16.3	15.8	15.3	14.9	14.5	13.8
Sussex																	
All Races	8.7	7.9	9.0	9.5	8.5	8.1	9.0	8.3	7.4	8.1	8.2	7.5	7.9	7.6	7.2	7.0	6.2
White	6.8	6.8	8.0	8.9	8.0	7.5	7.6	6.5	5.5	5.9	5.5	5.1	6.2	5.7	5.2	5.6	5.0
Black	13.8	10.4	11.1	10.4	9.9	10.4	14.4	15.9	15.4	16.9	19.0	16.9	15.7	16.0	15.6	12.6	11.2

Notes:

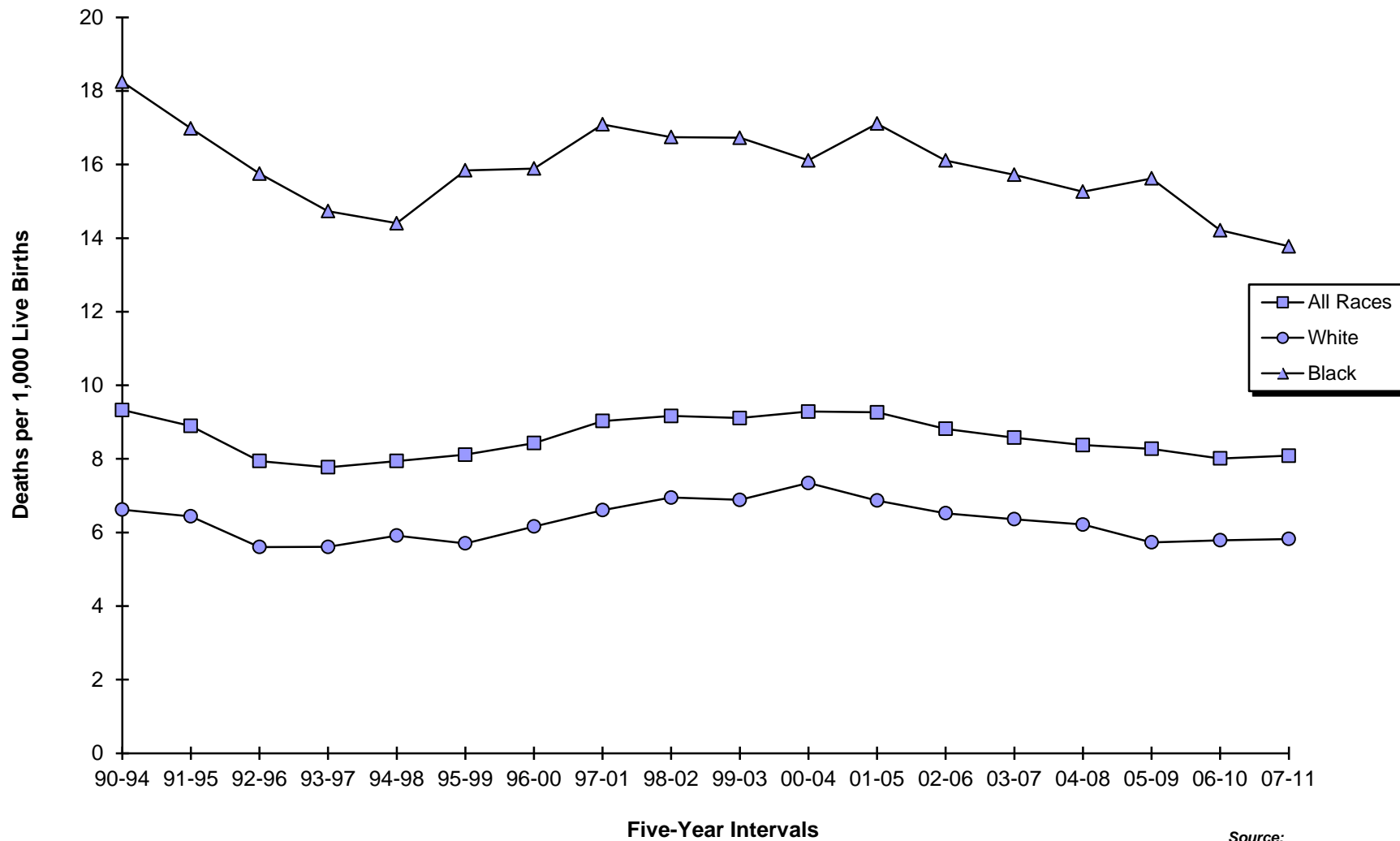
1. 2006-2010 U.S. data are based on NCHS estimates.
2. Infant mortality rates represent the number of deaths of children under one year of age per 1000 live births.
3. '+' indicates that the Delaware rate is significantly higher than the U.S. rate.
4. '-' indicates that the Delaware rate is significantly lower than the U.S. rate.
5. "----" Indicates rate does not meet standard of reliability or precision; based on fewer than 20 deaths in the numerator.
6. No statistical comparisons were made between the county rates and the U.S. rate due to small numbers. See Appendix C for details.

Sources:

National Center for Health Statistics
Delaware Health Statistics Center

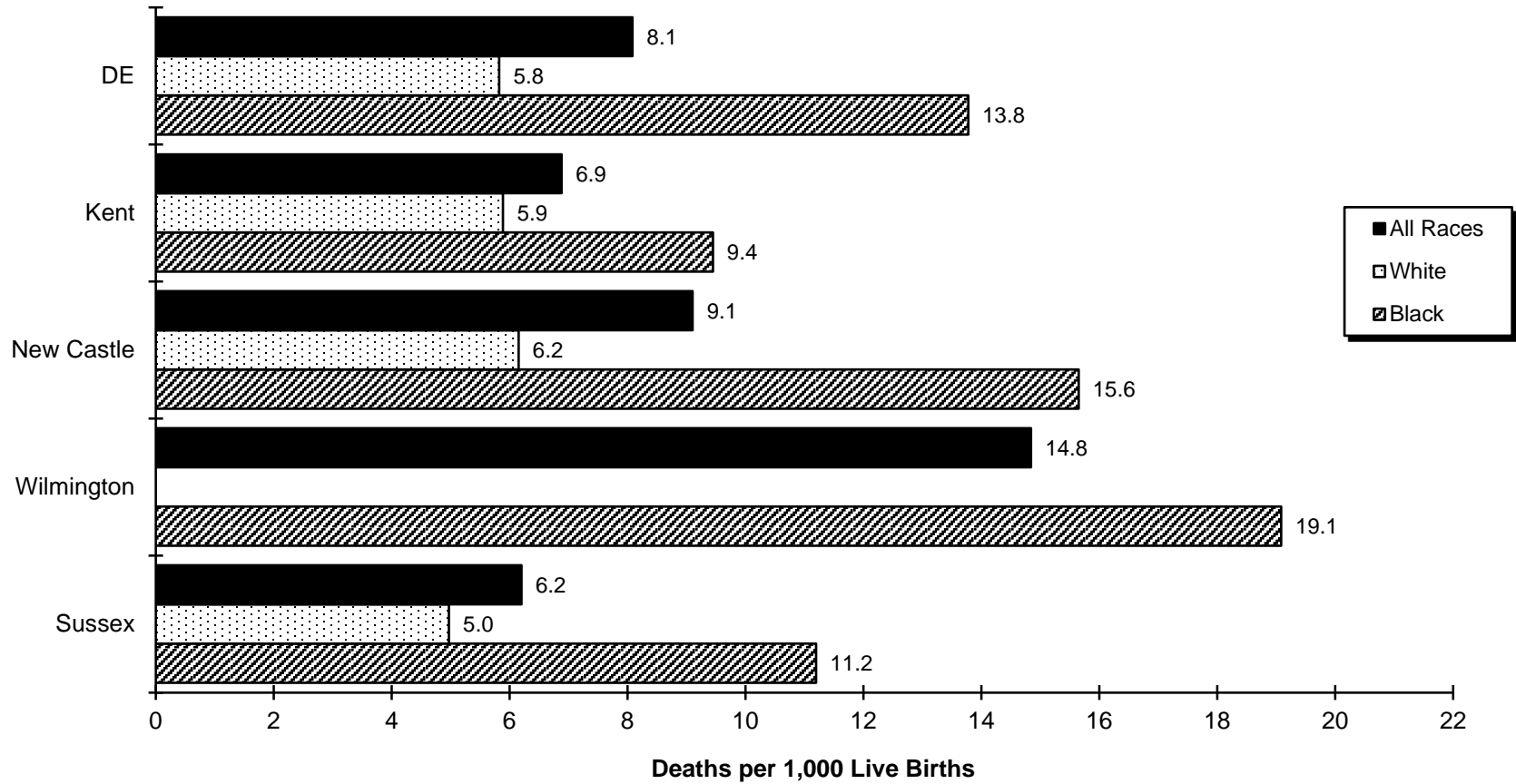
INFANT4

Figure E-1
Five-Year Average Infant Mortality Rates by Race
Delaware, 1990-2011



Source:
 Delaware Health Statistics Center

Figure E-2
Five-Year Average Infant Mortality Rates by Race
Delaware, Counties and the City of Wilmington, 2007-2011



Source:
 Delaware Health Statistics Center

TABLE E-5
FIVE-YEAR AVERAGE NEONATAL MORTALITY RATES BY RACE

U.S., DELAWARE, COUNTIES AND CITY OF WILMINGTON, 1991-2011

Area/ Race	1991 -1995	1992 -1996	1993 -1997	1994 -1998	1995 -1999	1996 -2000	1997 -2001	1998 -2002	1999 -2003	2000 -2004	2001 -2005	2002 -2006	2003 -2007	2004 -2008	2005 -2009	2006 -2010	2007 -2011
U.S.																	
All Races	5.3	5.1	5.0	4.9	4.8	4.7	4.7	4.7	4.6	4.6	4.6	4.6	4.5	4.4	4.4	4.3	4.2
White	4.3	4.2	4.1	4.0	4.0	3.9	3.9	3.9	3.9	3.8	3.8	3.8	3.8	3.7	3.7	3.6	3.5
Black	10.6	10.2	9.9	9.7	9.6	9.5	9.5	9.5	9.5	9.3	9.2	9.1	9.0	8.7	8.6	8.3	8.0
Delaware																	
All Races	6.0+	5.4	5.3	5.4	5.5+	5.9+	6.4+	6.7+	6.7+	6.7+	6.7+	6.4+	6.1+	5.9+	5.9+	5.6+	5.7+
White	4.5	3.8	3.7	3.7	3.5	4.0	4.4	5.0+	5.0+	5.3+	5.0+	4.8+	4.5+	4.3	4.0	3.8	3.7
Black	11.1	10.7	10.4	10.6	11.9+	12.1+	12.8+	12.7+	12.2+	11.4+	12.2+	11.6+	11.2+	10.8+	11.4+	10.3+	10.4+
Kent																	
All Races	4.9	5.0	5.0	5.4	5.5	5.9	6.1	7.2	7.0	7.2	7.0	6.0	4.3	4.6	4.7	4.4	5.0
White	3.6	3.8	---	3.4	3.4	4.1	4.6	7.0	6.5	6.8	5.5	4.5	---	2.9	2.7	3.5	4.2
Black	---	---	12.7	12.1	12.0	12.1	11.3	8.9	9.3	9.2	11.2	10.0	9.1	8.8	10.1	7.3	7.2
New Castle																	
All Races	6.4	5.6	5.2	5.0	5.4	6.1	6.6	6.9	7.1	7.0	7.1	6.9	6.8	6.5	6.7	6.2	6.4
White	4.6	3.6	3.6	3.1	3.0	3.7	4.3	4.5	5.0	5.3	5.3	5.1	5.0	4.8	4.6	3.9	3.8
Black	12.6	12.4	10.8	10.8	13.0	13.5	14.2	14.5	13.9	12.4	12.5	12.3	12.1	11.7	12.1	11.8	12.2
Wilmington																	
All Races	11.1	10.5	8.7	8.0	8.7	9.8	9.7	10.1	9.8	9.1	9.5	8.9	9.0	8.9	9.6	9.0	9.7
White	---	---	---	---	---	---	---	---	---	---	---	---	---	---	---	---	---
Black	13.0	14.2	11.2	10.2	11.8	12.5	12.5	13.8	13.4	12.1	13.1	12.3	12.5	11.6	12.9	12.5	13.6
Balance of NC County																	
All Races	5.3	4.5	4.5	4.3	4.7	5.3	6.0	6.3	6.6	6.5	6.6	6.5	6.3	6.0	6.0	5.6	5.8
White	4.3	3.5	3.5	3.1	3.0	3.6	4.2	4.6	5.1	5.4	5.5	5.2	5.2	4.8	4.7	4.0	3.9
Black	12.1	10.6	10.3	11.4	14.1	14.4	15.6	15.1	14.2	12.5	12.1	12.3	11.8	11.8	11.6	11.5	11.4
Sussex																	
All Races	5.5	5.0	5.6	6.8	6.0	5.3	5.8	5.5	4.6	5.1	5.5	5.3	5.6	5.2	4.9	4.9	4.1
White	4.8	4.8	5.1	6.2	5.5	5.0	4.9	4.5	3.6	3.8	3.7	3.9	4.6	4.3	3.7	4.1	3.3
Black	---	---	---	---	---	---	---	---	---	9.9	12.1	10.8	10.3	9.3	9.8	---	---

INFANT5

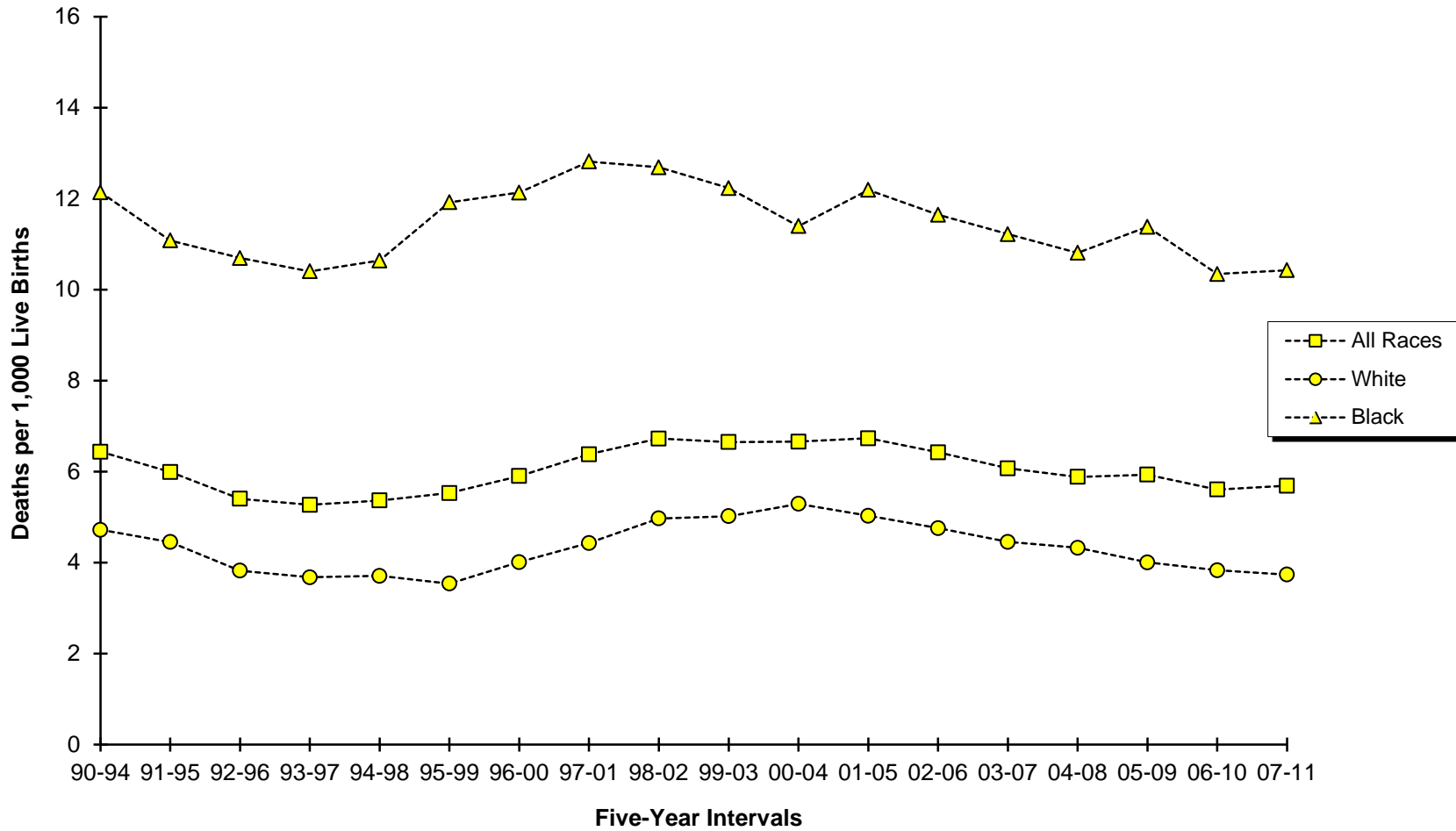
Notes:

1. 2006-2010 U.S. data are based on NCHS estimates.
2. Neonatal mortality rates represent the number of deaths of children under 28 days of age per 1000 live births.
3. '+' indicates that the Delaware rate is significantly higher than the U.S. rate.
4. "---" Indicates rate does not meet standard of reliability or precision; based on fewer than 20 deaths in the numerator.
5. No statistical comparisons were made between the county rates and the U.S. rate due to small numbers. See Appendix C for details.

Sources:

National Center for Health Statistics
Delaware Health Statistics Center

Figure E-3
Five-Year Average Neonatal Mortality Rates by Race
Delaware, 1990-2011



Source:
 Delaware Health Statistics Center

TABLE E-6
 FIVE-YEAR AVERAGE POSTNEONATAL MORTALITY RATES BY RACE
 U.S., DELAWARE, COUNTIES AND CITY OF WILMINGTON, 1991-2011

Area/ Race	1991 -1995	1992 -1996	1993 -1997	1994 -1998	1995 -1999	1996 -2000	1997 -2001	1998 -2002	1999 -2003	2000 -2004	2001 -2005	2002 -2006	2003 -2007	2004 -2008	2005 -2009	2006 -2010	2007 -2011
U.S.																	
All Races	3.0	2.9	2.7	2.6	2.5	2.4	2.4	2.3	2.3	2.3	2.3	2.3	2.3	2.3	2.3	2.2	2.2
White	2.5	2.4	2.3	2.1	2.0	2.0	1.9	1.9	1.9	1.9	1.9	1.9	1.9	1.9	1.9	1.9	1.8
Black	5.8	5.6	5.4	5.1	5.0	4.8	4.8	4.8	4.7	4.8	4.8	4.7	4.6	4.6	4.5	4.4	4.3
Delaware																	
All Races	2.9	2.5	2.5	2.6	2.6	2.5	2.6	2.4	2.5	2.6	2.5	2.4	2.5	2.5	2.3	2.4	2.4
White	2.0-	1.8-	1.9	2.2	2.2	2.2	2.2	2.0	1.9	2.1	1.8	1.8	1.9	1.9	1.7	2.0	2.1
Black	5.9	5.1	4.3	3.8-	3.9	3.8	4.3	4.1	4.5	4.7	4.9	4.5	4.5	4.5	4.2	3.9	3.3-
Kent																	
All Races	3.7	3.5	3.2	3.6	3.0	2.7	2.7	2.7	2.6	2.9	3.0	3.1	2.8	2.6	2.3	2.0	1.9
White	3.0	3.0	3.1	3.7	---	2.9	---	---	---	---	---	---	---	---	---	---	---
Black	---	---	---	---	---	---	---	---	---	---	---	---	---	---	---	---	---
New Castle																	
All Races	2.6	2.2	2.1	2.3	2.5	2.4	2.5	2.2	2.3	2.4	2.3	2.3	2.5	2.5	2.3	2.6	2.7
White	1.7	1.4	1.4	1.7	1.9	1.8	2.0	1.8	1.8	1.9	1.8	1.7	2.0	2.1	1.9	2.3	2.4
Black	5.7	5.1	4.5	4.3	4.4	4.2	4.0	3.5	4.1	4.2	4.2	4.0	4.3	4.0	4.0	3.9	3.5
Wilmington																	
All Races	5.5	4.8	4.9	4.8	5.0	4.6	4.3	3.4	3.7	3.3	3.3	3.4	4.0	4.1	4.2	5.1	5.2
White	---	---	---	---	---	---	---	---	---	---	---	---	---	---	---	---	---
Black	7.3	6.3	6.5	6.6	6.3	6.2	5.5	---	---	---	---	---	---	---	5.1	5.5	5.5
Balance of NC County																	
All Races	1.9	1.6	1.5	1.7	1.9	1.9	2.1	2.0	2.0	2.3	2.1	2.0	2.2	2.1	1.9	2.1	2.1
White	1.6	1.3	1.3	1.6	1.8	1.8	1.9	1.8	1.6	1.9	1.7	1.6	1.9	2.0	1.7	2.0	2.1
Black	---	---	---	---	---	---	---	---	4.0	4.4	4.4	4.0	4.0	3.5	3.3	3.1	---
Sussex																	
All Races	3.2	2.9	3.4	2.7	2.5	2.8	3.3	2.9	2.8	3.0	2.7	2.2	2.3	2.4	2.3	2.2	2.1
White	---	---	---	---	---	---	---	---	---	---	---	---	---	---	---	---	---
Black	---	---	---	---	---	---	---	---	---	---	---	---	---	---	---	---	---

INFANT6

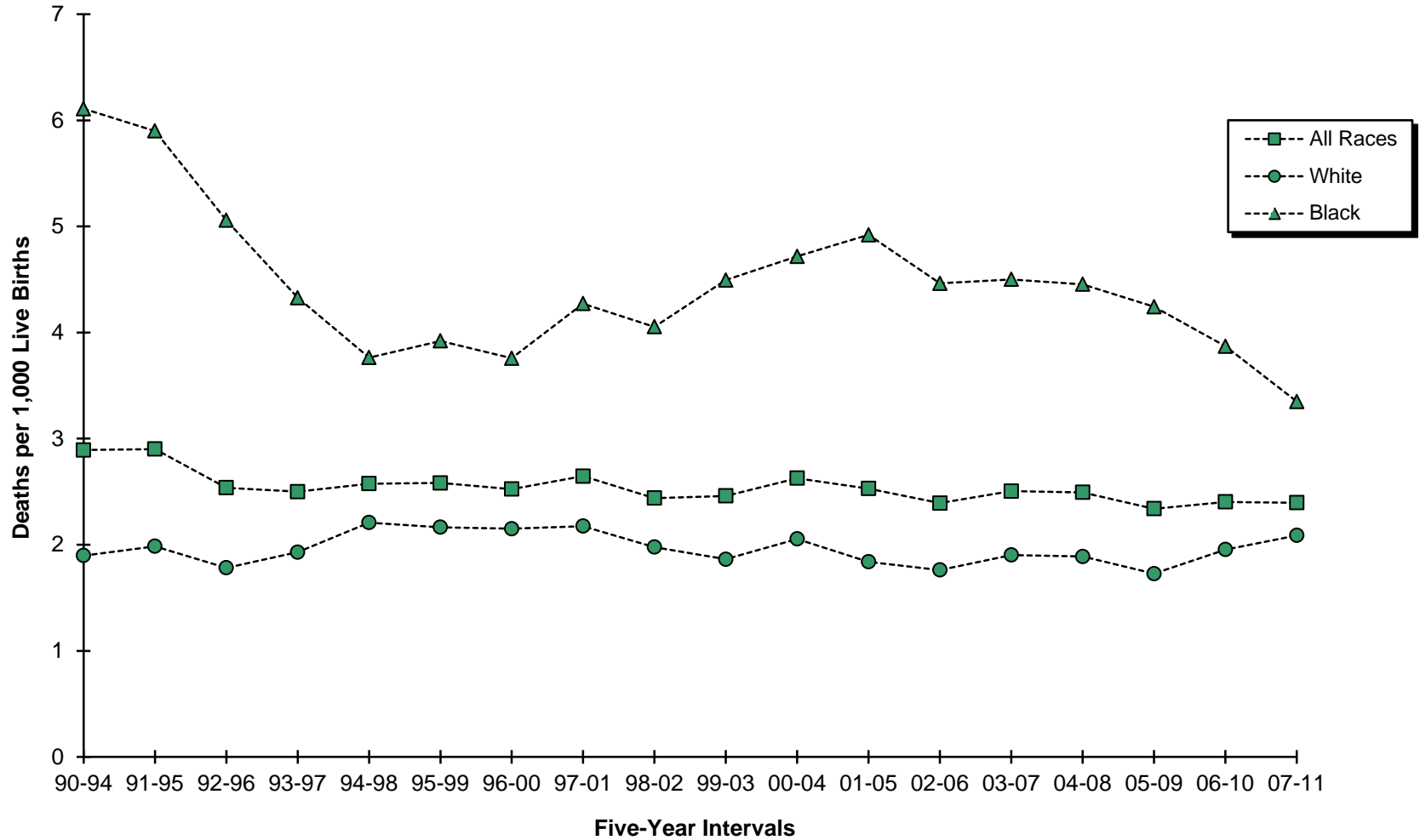
Notes:

1. 2006-2010 U.S. data are based on NCHS estimates.
2. Postneonatal mortality rates represent the number of deaths of children 28 to 364 days of age per 1000 live births.
3. '-' indicates that the Delaware rate is significantly lower than the U.S. rate.
4. "----" indicates rate does not meet standard of reliability or precision; based on fewer than 20 deaths in the numerator.
5. No statistical comparisons were made between the county rates and the U.S. rate due to small numbers. See Appendix C for details.

Sources:

National Center for Health Statistics
 Delaware Health Statistics Center

Figure E-4
Five-Year Average Postneonatal Mortality Rates by Race
Delaware, 1990-2011



Source:
 Delaware Health Statistics Center

TABLE E-7
FIVE-YEAR AVERAGE INFANT MORTALITY
RATES BY SELECTED RISK MARKERS AND RACE OF MOTHER

DELAWARE, 2006-2010 LIVE BIRTH COHORT

Risk Factor	Race		
	All Races	White	Black
Birth Weight of Child			
<2500	65.4	55.5	81.6
<1500	260.3	241.2	283.9
1500-2499	15.8	17.5	13.7
2500+	2.2	2.1	2.7
Age of Mother			
<20	11.5	7.8	16.1
20-24	8.2	6.1	12.4
25-29	8.1	6.6	13.2
30+	6.6	5.0	13.6
Marital Status of Mother			
Married	5.5	4.6	11.6
Single	10.6	8.0	14.3
Education of Mother			
<12 years	9.7	6.9	16.4
H.S. diploma	10.4	8.5	13.6
1+ years college	5.6	4.3	11.2
Interval Since Last Live Birth			
<18 months	9.9	---	15.9
18+ months	5.8	4.7	9.1

COHRATES

Notes:

1. Infant mortality rates represent the number of deaths to children under one year of age per 1,000 live births.

Source:

Delaware Health Statistics Center

TABLE E-8
LEADING CAUSES OF INFANT DEATH BY GESTATIONAL AGE CATEGORY

DELAWARE, 2006-2010 LIVE BIRTH COHORT

Leading causes of death	Gestational Age Category					% Born Very Preterm	% Born Preterm
	Very preterm	Moderately preterm	Term	Unknown	Total		
Disorders related to short gestation and low birth weight, not elsewhere classified	102	0	1	2	105	97.1	97.1
Congenital malformations, deformations, and chromosomal abnormalities	12	23	33	0	68	17.6	51.5
Sudden infant death syndrome	0	14	36	0	50	0.0	28.0
Newborn affected by maternal complications of pregnancy	39	2	0	0	41	95.1	100.0
Newborn affected by complications of placenta, cord, and membranes	22	0	1	0	23	95.7	95.7
Diseases of the circulatory system	2	5	7	0	14	14.3	50.0
Respiratory distress of newborn	12	1	1	0	14	85.7	92.9
Atelectasis	10	0	0	0	10	100.0	100.0
Accidents (unintentional injuries)	2	3	4	0	9	22.2	55.6
Bacterial sepsis of newborn	7	1	0	0	8	87.5	100.0
Intrauterine hypoxia and birth asphyxia	4	1	1	1	7	57.1	71.4
Neonatal hemorrhage	7	0	0	0	7	100.0	100.0
Septicemia	3	1	2	0	6	50.0	66.7
Diarrhea and gastroenteritis of infectious origin	5	0	0	0	5	100.0	100.0
Gastritis, duodenitis, and noninfective enteritis and colitis	4	1	0	0	5	80.0	100.0
Newborn affected by other complications of labor and delivery	5	0	0	0	5	100.0	100.0
Renal failure and other disorders of kidney period	3	1	0	0	4	75.0	100.0
Necrotizing enterocolitis of newborn	4	0	0	0	4	100.0	100.0
Assault (homicide)	0	1	3	0	4	0.0	25.0
All other causes	27	9	33	1	70	38.6	51.4
TOTAL	274	63	122	4	463	59.2	72.8

Notes:

1. Leading causes of infant death are categorized using NCHS rankable causes of infant death, specific ICD-10 codes are shown in Appendix D.
2. Very preterm is defined as less than 32 weeks of gestation.
3. Moderately preterm is defined as between 32 and 36 weeks of gestation.
4. Term is defined as 37 and greater weeks of gestation.
5. The percent born preterm includes both the very preterm and moderately preterm groups.

Source:

Delaware Health Statistics Center

INFLCOD

TABLE E-9
FIVE-YEAR AVERAGE INFANT MORTALITY RATES BY RACE AND SELECTED RISK MARKERS

DELAWARE LIVE BIRTH COHORT, 1990-2010

Parameter/ Race	1990 -1994	1991 -1995	1992 -1996	1993 -1997	1994 -1998	1995 -1999	1996 -2000	1997 -2001	1998 -2002	1999 -2003	2000 -2004	2001 -2005	2002 -2006	2003 -2007	2004 -2008	2005 -2009	2006 -2010
BIRTHWEIGHT																	
2500+																	
All Races	2.6	2.6	2.3	2.3	2.5	2.4	2.4	2.5	2.3	2.4	2.5	2.2	2.2	2.3	2.0	1.9	2.2
White	2.1	2.1	2.0	2.1	2.4	2.4	2.3	2.4	2.1	2.0	2.1	1.9	1.7	1.9	1.8	1.7	2.1
Black	4.1	4.1	3.3	2.9	2.8	2.8	2.8	3.0	3.0	3.6	3.9	3.5	3.6	3.5	2.9	2.8	2.7
<2500																	
All Races	83.8	76.4	68.7	65.4	64.8	66.5	69.5	75.2	76.4	74.2	73.1	74.5	69.9	68.8	69.2	70.6	65.4
White	70.0	66.3	58.4	56.9	55.4	53.9	55.9	63.2	68.7	67.4	68.8	68.4	64.3	60.8	60.0	58.5	55.5
Black	102.9	91.1	85.3	78.9	78.8	86.0	88.2	93.7	90.5	88.3	83.0	88.0	80.9	82.2	83.9	89.5	81.6
<1500																	
All Races	337.3	307.1	272.9	255.2	258.5	262.7	270.9	304.8	316.2	302.4	306.2	313.9	289.4	285.8	286.8	279.3	260.3
White	311.4	282.1	239.3	229.8	223.2	219.3	231.5	281.9	303.4	297.2	316.8	321.2	295.3	289.0	280.2	262.0	241.2
Black	355.0	328.4	306.1	280.3	296.8	315.8	312.1	329.8	335.5	317.0	301.5	315.7	289.4	286.0	291.9	298.9	283.9
GESTATION																	
37+ weeks																	
All Races	2.6	2.7	2.3	2.4	2.6	2.6	2.5	2.5	2.3	2.3	2.4	2.2	2.2	2.3	2.0	2.0	2.4
White	2.1	2.3	2.2	2.3	2.6	2.6	2.4	2.3	2.1	1.9	2.0	1.7	1.8	1.9	1.8	1.8	2.4
Black	3.9	3.8	2.8	2.8	2.8	2.7	2.8	3.1	2.9	3.7	4.0	3.4	3.4	3.4	2.9	2.7	2.8
<37 weeks																	
All Races	62.9	56.2	50.3	47.1	45.6	45.9	48.2	53.0	54.3	52.8	52.6	53.5	49.1	47.1	47.0	47.3	43.6
White	51.4	45.6	38.1	37.2	35.4	33.6	35.7	41.8	45.5	45.1	46.5	45.2	40.5	37.5	36.2	34.9	33.0
Black	79.8	73.4	72.3	65.3	64.1	69.6	70.5	73.5	72.5	70.5	67.7	72.7	68.2	66.9	68.3	71.1	64.0
<32 weeks																	
All Races	260.8	238.6	212.4	196.5	199.8	201.3	214.9	238.1	249.6	238.7	239.4	249.1	232.4	220.4	220.4	216.9	194.7
White	260.0	231.0	186.3	177.7	179.4	174.0	191.5	228.4	249.2	238.2	244.0	248.3	223.0	202.7	193.2	184.8	159.7
Black	258.2	242.8	239.1	215.4	222.2	235.6	238.7	250.4	255.4	246.3	239.8	259.4	250.0	246.4	255.2	258.8	237.0
PLURALITY																	
Single																	
All Races	8.2	7.7	7.0	6.7	6.7	6.8	6.9	7.3	7.3	7.3	7.5	7.4	7.1	7.2	7.0	7.0	7.0
White	5.4	5.4	5.0	5.0	5.1	5.1	4.9	5.2	5.4	5.2	5.6	5.4	5.1	5.2	5.2	4.9	5.4
Black	16.8	14.8	13.3	12.1	11.5	12.2	12.9	13.4	13.4	13.8	13.5	13.6	13.0	12.8	12.2	12.7	11.8
Plural																	
All Races	45.6	43.1	30.0	33.5	39.3	41.6	45.4	53.1	52.9	52.3	50.3	52.0	47.0	44.0	40.3	41.0	32.6
White	41.9	37.9	24.5	28.9	30.4	28.6	35.1	43.4	48.0	50.3	49.2	49.9	44.0	36.6	29.6	30.6	23.0
Black	---	---	---	---	68.7	84.6	73.0	80.7	68.5	60.8	54.1	64.6	59.1	63.5	67.7	69.5	54.4
SMOKING DURING PREGNANCY																	
No																	
All Races	8.1	7.8	7.0	7.1	7.1	7.4	7.6	8.1	8.0	8.2	8.2	8.2	7.9	7.7	7.4	7.6	7.4
White	5.5	5.4	5.0	5.3	5.2	5.3	5.3	5.7	5.8	5.9	6.2	6.1	6.0	5.7	5.4	5.3	5.6
Black	15.9	15.0	13.4	12.6	12.7	14.0	14.3	15.3	14.8	15.0	14.3	14.7	13.7	13.4	13.2	13.9	12.8
Yes																	
All Races	13.3	12.1	10.3	9.2	10.6	10.6	11.3	13.4	15.1	14.1	14.8	15.1	13.4	13.9	13.3	12.1	10.9
White	9.5	9.6	8.2	7.4	9.4	9.3	9.8	12.2	14.2	12.7	13.3	13.0	10.2	10.7	10.7	8.9	8.2
Black	27.4	21.3	18.6	16.2	15.3	16.3	17.3	18.0	18.9	19.4	19.5	22.0	23.9	23.8	21.2	21.5	18.0

TABLE E-9 (continued)
 FIVE-YEAR AVERAGE INFANT MORTALITY RATES BY RACE AND SELECTED RISK MARKERS

DELAWARE LIVE BIRTH COHORT, 1990-2010

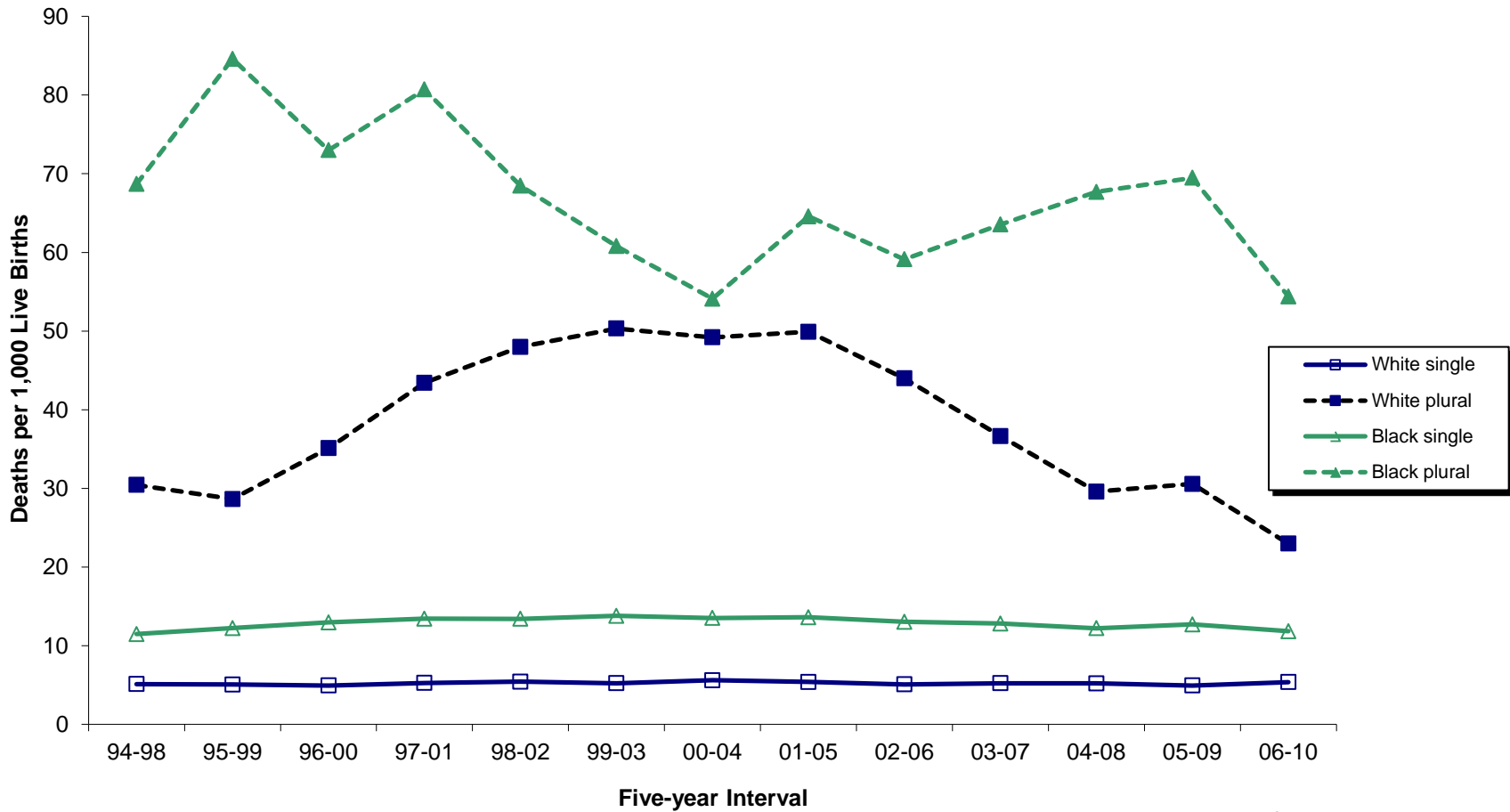
Parameter/ Race	1990 -1994	1991 -1995	1992 -1996	1993 -1997	1994 -1998	1995 -1999	1996 -2000	1997 -2001	1998 -2002	1999 -2003	2000 -2004	2001 -2005	2002 -2006	2003 -2007	2004 -2008	2005 -2009	2006 -2010
EDUCATION																	
HS Grad or less																	
All Races	10.6	10.4	9.5	9.4	9.9	10.4	10.3	11.1	11.5	11.4	11.4	11.1	10.7	10.8	10.1	10.0	10.0
White	7.4	7.6	6.9	7.2	8.0	8.0	7.8	8.4	9.1	8.8	9.1	8.7	8.3	8.4	7.8	7.6	7.7
Black	17.8	16.8	15.7	14.3	14.3	15.8	15.6	16.8	16.9	17.2	16.9	17.2	16.6	16.4	15.4	15.4	14.8
1+ yrs college																	
All Races	6.5	5.7	5.0	4.9	4.9	4.9	5.5	6.1	6.0	6.0	6.0	6.3	5.8	5.4	5.6	5.9	5.6
White	4.6	4.2	4.0	3.9	3.7	3.6	4.1	4.6	4.7	4.7	5.0	5.0	4.5	4.1	4.2	4.1	4.3
Black	16.9	13.0	9.9	10.2	10.5	11.8	13.5	13.9	12.6	12.2	11.0	12.0	11.1	10.9	11.4	13.1	11.2
PAYMENT FOR DELIVERY																	
Medicaid																	
All Races	NA	11.7	10.1	10.0	10.3	10.9	9.9	10.6	10.1	9.5	9.8	10.2	9.6	10.4	10.2	9.9	9.5
White	NA	8.5	7.3	7.9	8.8	9.1	7.7	8.6	8.3	7.1	7.5	7.7	7.1	8.0	8.0	7.5	7.5
Black	NA	15.4	13.8	12.9	12.7	13.6	13.1	13.8	13.0	13.3	13.7	14.7	14.0	14.4	14.1	14.1	13.0
Private Insurance																	
All Races	NA	6.1	5.5	5.3	5.5	5.7	6.5	6.8	7.4	7.7	7.8	7.6	7.4	6.7	6.4	6.6	6.4
White	NA	4.8	4.4	4.2	4.2	4.3	4.9	5.2	5.7	5.9	6.1	5.8	5.6	5.0	4.6	4.5	4.7
Black	NA	14.1	12.6	11.6	12.8	13.7	14.8	15.6	16.5	17.1	16.9	17.0	16.6	15.3	15.0	16.4	14.8

COTRENT

- Notes:**
1. See the Basic Definitions' section for definitions of birthweight, gestation, prenatal care attainment, and plurality.
 2. "---" indicates rate does not meet standards of reliability or precision; based on fewer than 20 deaths in the numerator.
 3. Primary source of payment for delivery not available prior to 1991.

Source:
 Delaware Health Statistics Center

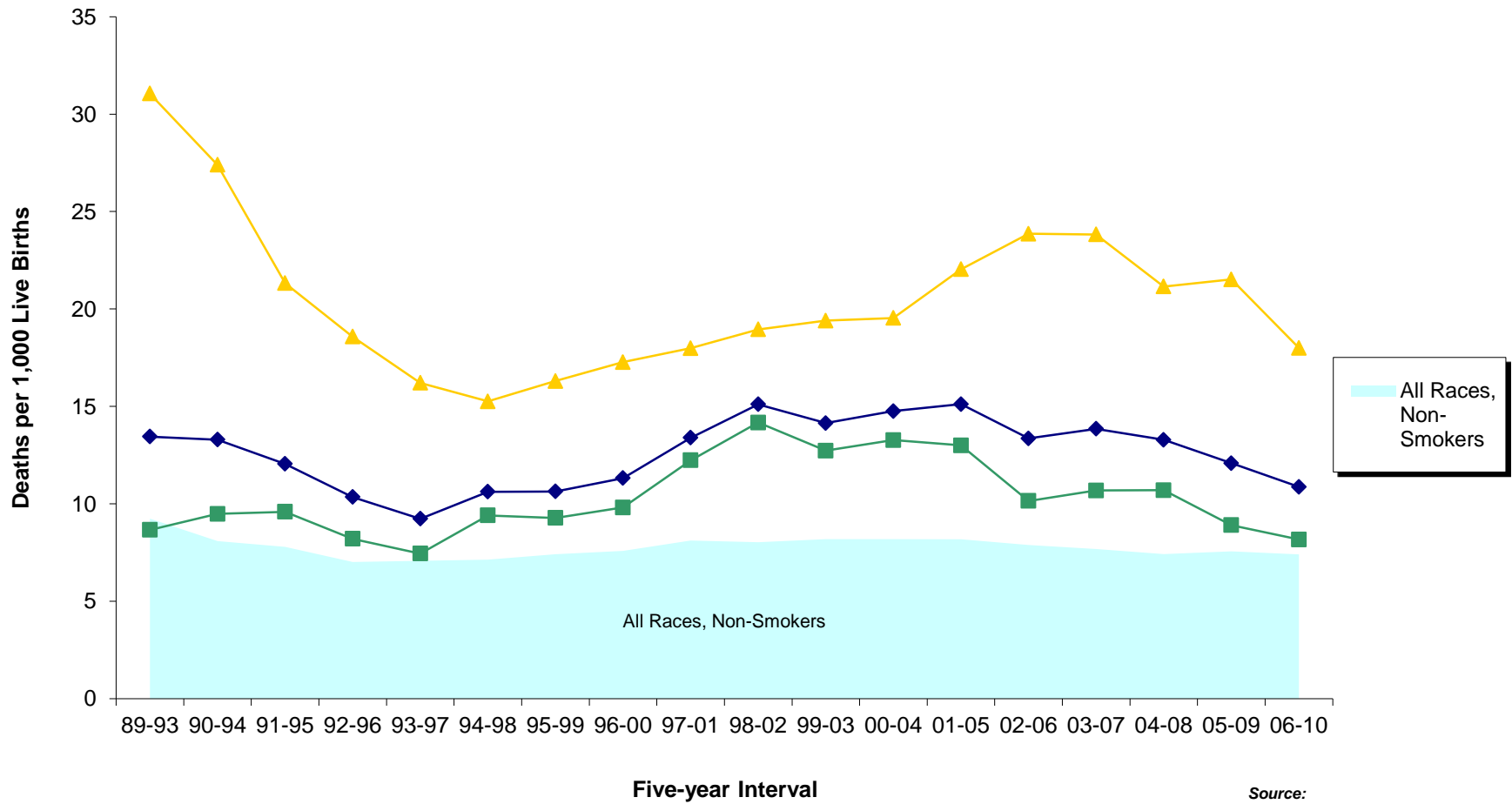
Figure E-5
Five-year Average Infant Mortality Rates by Race and Plurality
Delaware, 1994-2010 Live Birth Cohort



Source:
 Delaware Health Statistics Center

Figure E-6
Five-year Average Infant Mortality Rates by Race of Mothers who Smoked during Pregnancy versus all Non-smoking Mothers

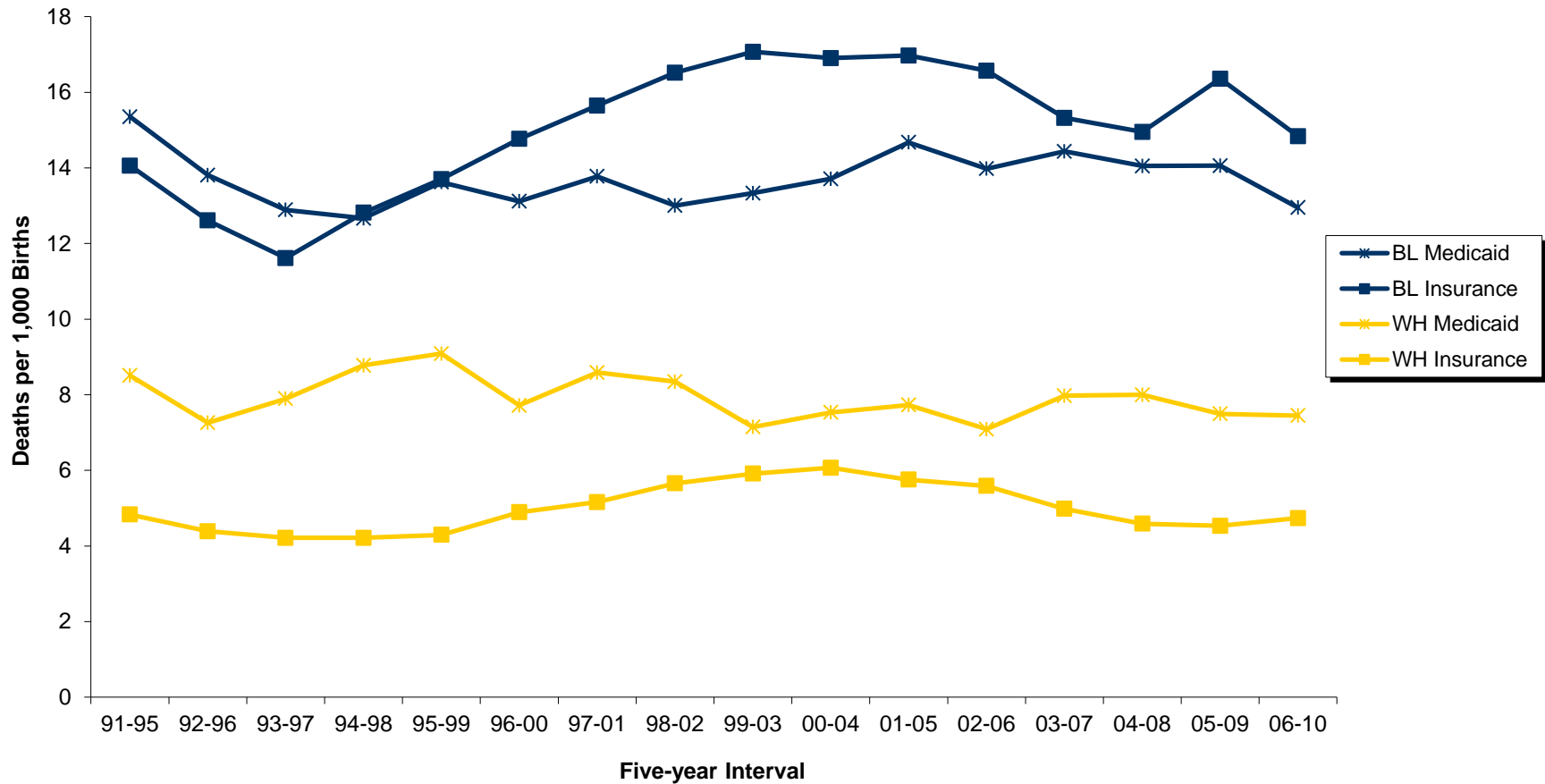
Delaware, 1989-2010 Live Birth Cohort



Source:
 Delaware Health Statistics Center

Figure E-7
Five-year Average Infant Mortality Rates by Race and
Source of Payment for Delivery

Delaware, 1991-2010 Live Birth Cohort



Source:
 Delaware Health Statistics Center

TABLE E-10
NUMBER OF INFANT DEATHS BY PLURALITY, BIRTH WEIGHT IN GRAMS, RACE OF MOTHER AND SEX OF CHILD
DELAWARE, 2006-2010 LIVE BIRTH COHORT

Plurality/ Birth Weight	Race and Sex										
	All Races			White			Black			Other	
	Both Sexes	Male	Female	Both Sexes	Male	Female	Both Sexes	Male	Female	Both Sexes	Male
All Births	463	248	215	235	126	109	213	111	102	15	11
<2500	343	186	157	157	88	69	175	89	86	11	9
<1500	277	155	122	116	71	45	153	77	76	8	7
<500	133	67	66	44	23	21	85	40	45	4	4
500-999	116	69	47	54	35	19	59	32	27	3	2
1000-1499	28	19	9	18	13	5	9	5	4	1	1
1500-1999	31	14	17	21	9	12	9	5	4	1	0
2000-2499	35	17	18	20	8	12	13	7	6	2	2
2500+	116	58	58	76	36	40	37	21	16	3	1
2500-2999	46	21	25	30	15	15	15	6	9	1	0
3000-3499	44	23	21	24	9	15	18	13	5	2	1
3500-3999	20	10	10	17	8	9	3	2	1	0	0
4000-4499	4	3	1	4	3	1	0	0	0	0	0
4500+	2	1	1	1	1	0	1	0	1	0	0
Unknown	4	4	0	2	2	0	1	1	0	1	1
Single Births	396	214	182	204	106	98	179	98	81	13	10
<2500	284	155	129	130	69	61	144	78	66	10	8
<1500	222	127	95	91	54	37	124	67	57	7	6
<500	111	55	56	34	16	18	73	35	38	4	4
500-999	91	60	31	45	30	15	43	28	15	3	2
1000-1499	20	12	8	12	8	4	8	4	4	0	0
1500-1999	31	14	17	21	9	12	9	5	4	1	0
2000-2499	31	14	17	18	6	12	11	6	5	2	2
2500+	109	56	53	72	35	37	35	20	15	2	1
2500-2999	42	20	22	28	14	14	14	6	8	0	0
3000-3499	41	22	19	22	9	13	17	12	5	2	1
3500-3999	20	10	10	17	8	9	3	2	1	0	0
4000-4499	4	3	1	4	3	1	0	0	0	0	0
4500+	2	1	1	1	1	0	1	0	1	0	0
Unknown	3	3	0	2	2	0	0	0	0	1	1
Plural Births	67	34	33	31	20	11	34	13	21	2	1
<2500	59	31	28	27	19	8	31	11	20	1	1
<1500	55	28	27	25	17	8	29	10	19	1	1
<500	22	12	10	10	7	3	12	5	7	0	0
500-999	25	9	16	9	5	4	16	4	12	0	0
1000-1499	8	7	1	6	5	1	1	1	0	1	1
1500-1999	0	0	0	0	0	0	0	0	0	0	0
2000-2499	4	3	1	2	2	0	2	1	1	0	0
2500+	7	2	5	4	1	3	2	1	1	1	0
2500-2999	4	1	3	2	1	1	1	0	1	1	0
3000-3499	3	1	2	2	0	2	1	1	0	0	0
3500-3999	0	0	0	0	0	0	0	0	0	0	0
4000-4499	0	0	0	0	0	0	0	0	0	0	0
4500+	0	0	0	0	0	0	0	0	0	0	0
Unknown	1	1	0	0	0	0	1	1	0	0	0

PLBWRCSX

Note:
Infant deaths refer to deaths of children under one year of age.

Source:
Delaware Health Statistics Center

TABLE E-11
NUMBER OF NEONATAL DEATHS BY PLURALITY, BIRTH WEIGHT IN GRAMS, RACE OF MOTHER AND SEX OF CHILD
DELAWARE, 2006-2010 LIVE BIRTH COHORT

Plurality/ Birth Weight	Race and Sex										
	All Races			White			Black			Other	
	Both Sexes	Male	Female	Both Sexes	Male	Female	Both Sexes	Male	Female	Both Sexes	Male
All Births	324	180	144	153	86	67	161	86	75	10	8
<2500	286	158	128	128	74	54	149	77	72	9	7
<1500	251	142	109	105	65	40	139	71	68	7	6
<500	133	67	66	44	23	21	85	40	45	4	4
500-999	94	58	36	46	30	16	46	27	19	2	1
1000-1499	24	17	7	15	12	3	8	4	4	1	1
1500-1999	19	8	11	12	5	7	6	3	3	1	0
2000-2499	16	8	8	11	4	7	4	3	1	1	1
2500+	35	19	16	23	10	13	11	8	3	1	1
2500-2999	14	8	6	11	6	5	3	2	1	0	0
3000-3499	14	8	6	8	2	6	5	5	0	1	1
3500-3999	4	2	2	2	1	1	2	1	1	0	0
4000-4499	2	1	1	2	1	1	0	0	0	0	0
4500+	1	0	1	0	0	0	1	0	1	0	0
Unknown	3	3	0	2	2	0	1	1	0	0	0
Single Births	267	149	118	126	68	58	132	74	58	9	7
<2500	233	129	104	104	57	47	121	66	55	8	6
<1500	199	114	85	81	48	33	112	61	51	6	5
<500	111	55	56	34	16	18	73	35	38	4	4
500-999	72	49	23	38	25	13	32	23	9	2	1
1000-1499	16	10	6	9	7	2	7	3	4	0	0
1500-1999	19	8	11	12	5	7	6	3	3	1	0
2000-2499	15	7	8	11	4	7	3	2	1	1	1
2500+	32	18	14	20	9	11	11	8	3	1	1
2500-2999	13	7	6	10	5	5	3	2	1	0	0
3000-3499	12	8	4	6	2	4	5	5	0	1	1
3500-3999	4	2	2	2	1	1	2	1	1	0	0
4000-4499	2	1	1	2	1	1	0	0	0	0	0
4500+	1	0	1	0	0	0	1	0	1	0	0
Unknown	2	2	0	2	2	0	0	0	0	0	0
Plural Births	57	31	26	27	18	9	29	12	17	1	1
<2500	53	29	24	24	17	7	28	11	17	1	1
<1500	52	28	24	24	17	7	27	10	17	1	1
<500	22	12	10	10	7	3	12	5	7	0	0
500-999	22	9	13	8	5	3	14	4	10	0	0
1000-1499	8	7	1	6	5	1	1	1	0	1	1
1500-1999	0	0	0	0	0	0	0	0	0	0	0
2000-2499	1	1	0	0	0	0	1	1	0	0	0
2500+	3	1	2	3	1	2	0	0	0	0	0
2500-2999	1	1	0	1	1	0	0	0	0	0	0
3000-3499	2	0	2	2	0	2	0	0	0	0	0
3500-3999	0	0	0	0	0	0	0	0	0	0	0
4000-4499	0	0	0	0	0	0	0	0	0	0	0
4500+	0	0	0	0	0	0	0	0	0	0	0
Unknown	1	1	0	0	0	0	1	1	0	0	0

NEOPLBW

Note:
Neonatal deaths refer to deaths of children under 28 days of age.

Source:
Delaware Health Statistics Center