

The background of the slide consists of several parallel, diagonal gray lines that run from the top-left towards the bottom-right. These lines are spaced evenly and create a textured, grid-like appearance.

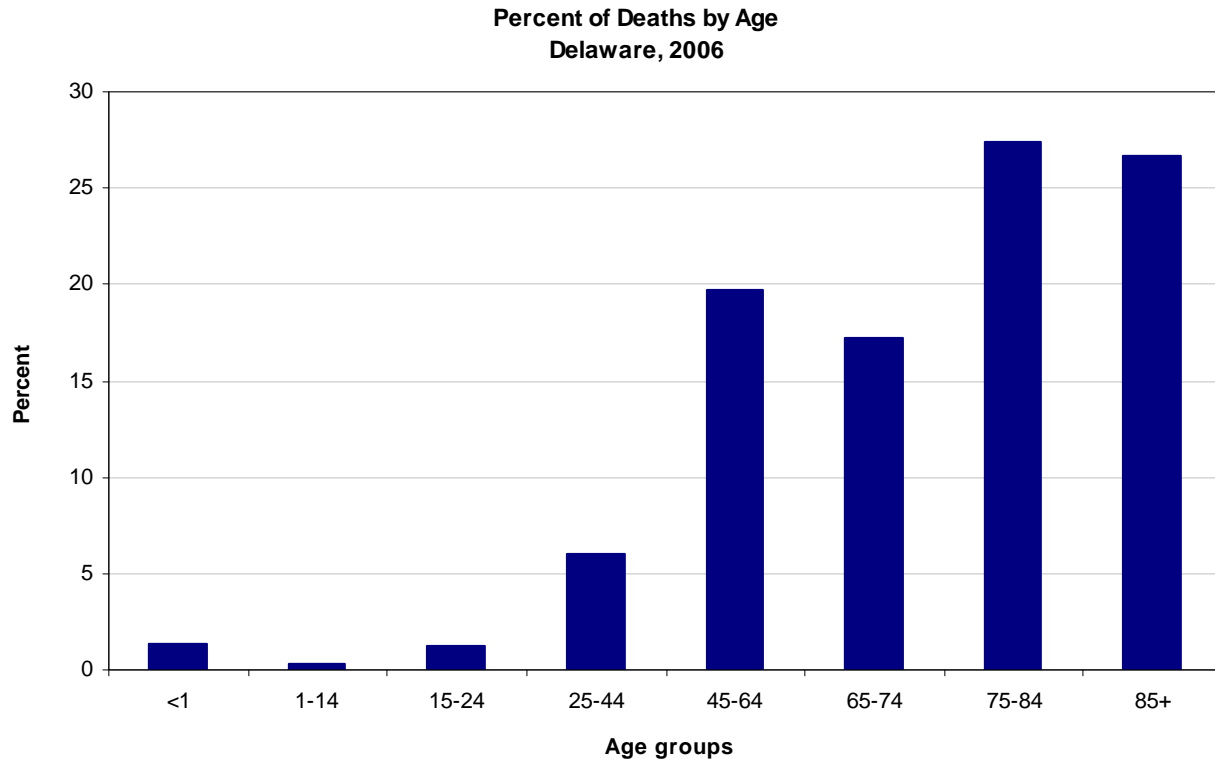
**Mortality**

**2006**

## MORTALITY

Fewer Delaware residents died in 2006 than in 2005. A total of 7,144 residents died, 99 of which were children under the age of 1. Deaths were split equally between males and females. Heart disease and cancer continued to be the leading and second leading causes of death, accounting for 51 percent of all deaths in 2006.

- Just over one quarter of the Delawareans who died in 2006 were 85 or older. Deaths to those 75 and older accounted for more than half of all deaths.



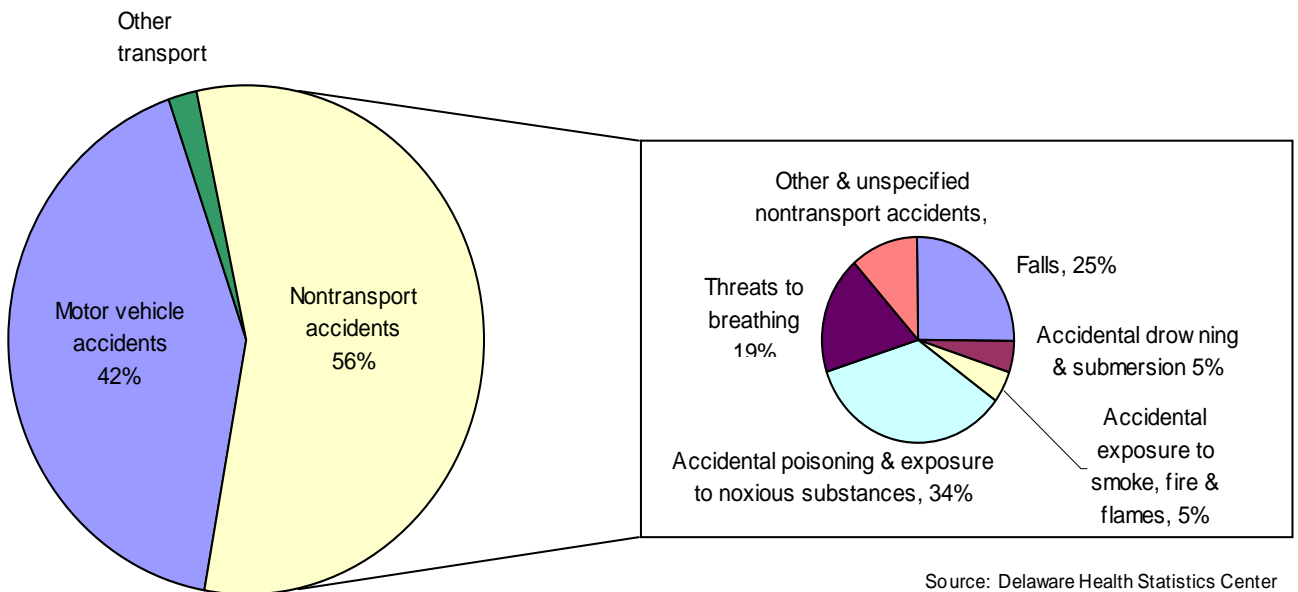
Source: Delaware Health Statistics Center

- A Delaware resident born in 2006 could expect to live an average of 78.4 years.
- Life expectancy at birth varied by race and sex; white females had the highest life expectancy (81.7) while black males had the lowest (71.4).
- In 1989, 80 percent of Delaware decedents were buried and 15 percent were cremated, by 2006 those proportions had changed to 66 (burial) and 33 (cremation).
- In 2006, the ten leading causes of death for residents of all ages were almost identical to the top 10 in 2005, with the main difference being movement among the rankings.

Rank	Leading Cause of Death	Number
1	Diseases of heart	1846
2	Malignant neoplasms	1767
3	Cerebrovascular diseases	383
4	Chronic lower respiratory diseases	344
5	Accidents (unintentional injuries)	322
6	Diabetes mellitus	190
7	Alzheimer's disease	189
8	Nephritis, nephrotic syndrome & nephrosis	152
9	Influenza & pneumonia	137
10	Septicemia	116

- There were 322 deaths due to accidents in 2006; 42 percent of which were due to motor vehicle accidents and 56 percent of which were due to non-transport accidents. More than one-third of the 181 non-transport accidents were caused by unintentional poisonings, which were second only to motor vehicle injuries as the leading cause of unintentional injury deaths.

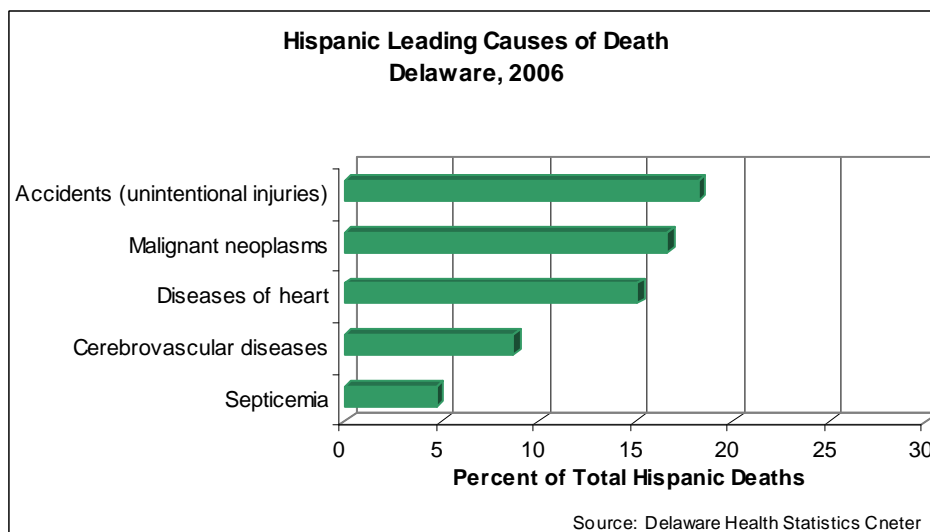
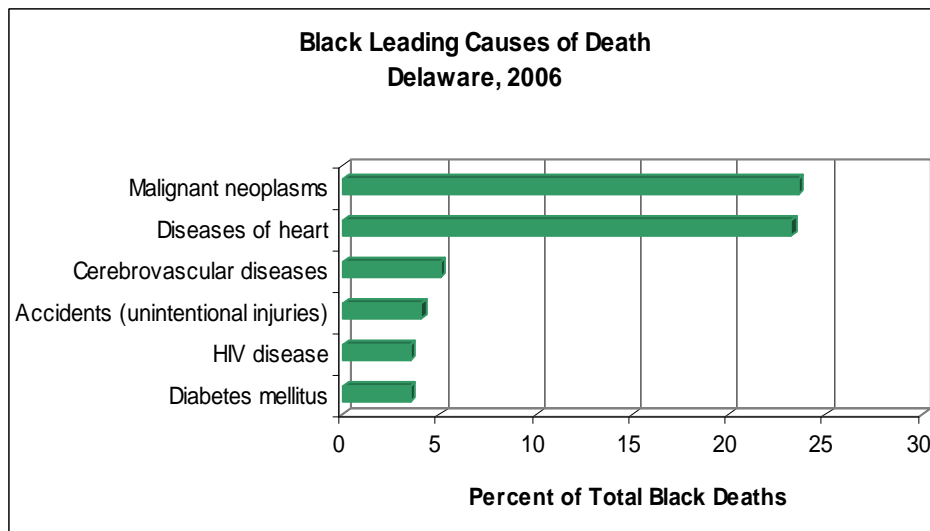
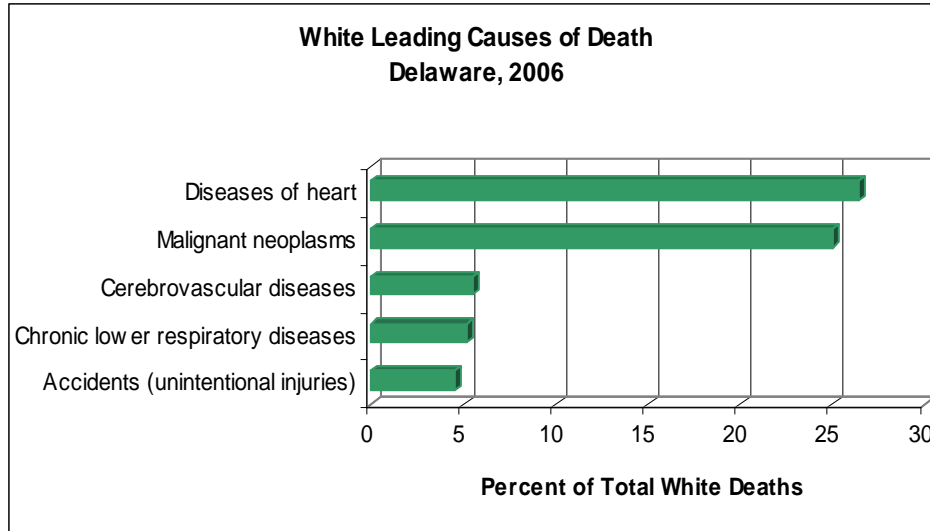
### Accidental Causes of Death by Specific Cause of Injury Delaware, 2006



- From 2002-2006, accidents were the number one cause of death for people 1-44 years of age, and were responsible for nearly half of all deaths for people 15-24 years of age. For those ages 15-24, accidents, homicides, and suicides were the three most frequent causes of death (See Table F-11).

## MORTALITY

The leading causes of death varied by race and ethnic group. The top five leading causes of death for white, black, and Hispanic Delawareans are shown below.

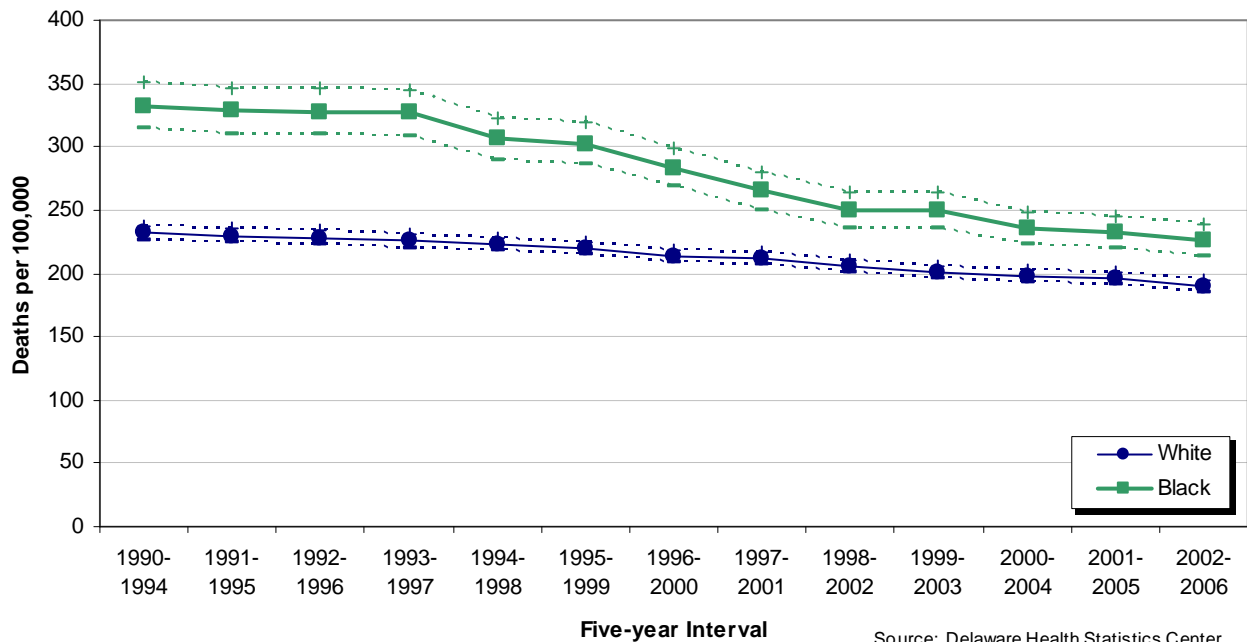


## MORTALITY

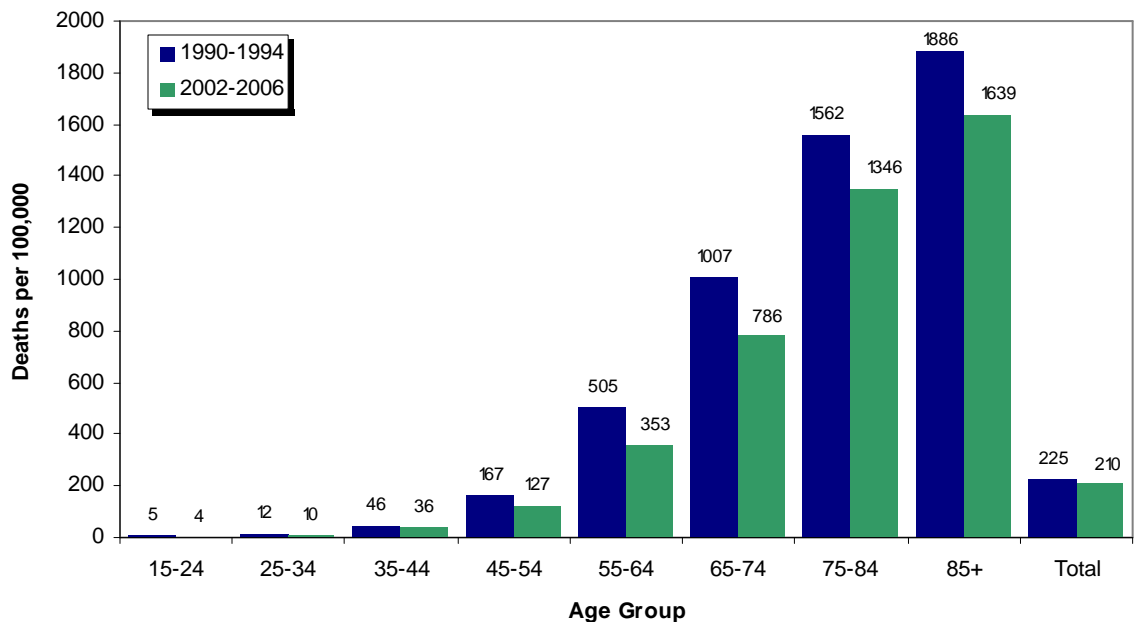
Cancer mortality rates have been decreasing in all three counties since the early 1990s. In 2002-2006, the 5-year age-adjusted cancer mortality rates ranged from 190.5 in Sussex county to 206.7 deaths per 100,000 population in Kent county.

Cancer mortality rates for black and white decedents have been decreasing since the early nineties, and while the gap between black and white has been narrowing, black cancer mortality rates in 2002-2006 remained significantly higher than the white rates.

**Five-year Age-Adjusted Cancer Mortality Rates by Race  
Delaware, 1990-2006**



**Five-year Average Age-Specific Cancer Mortality Rates  
Delaware, 1990-1994 and 2002-2006**



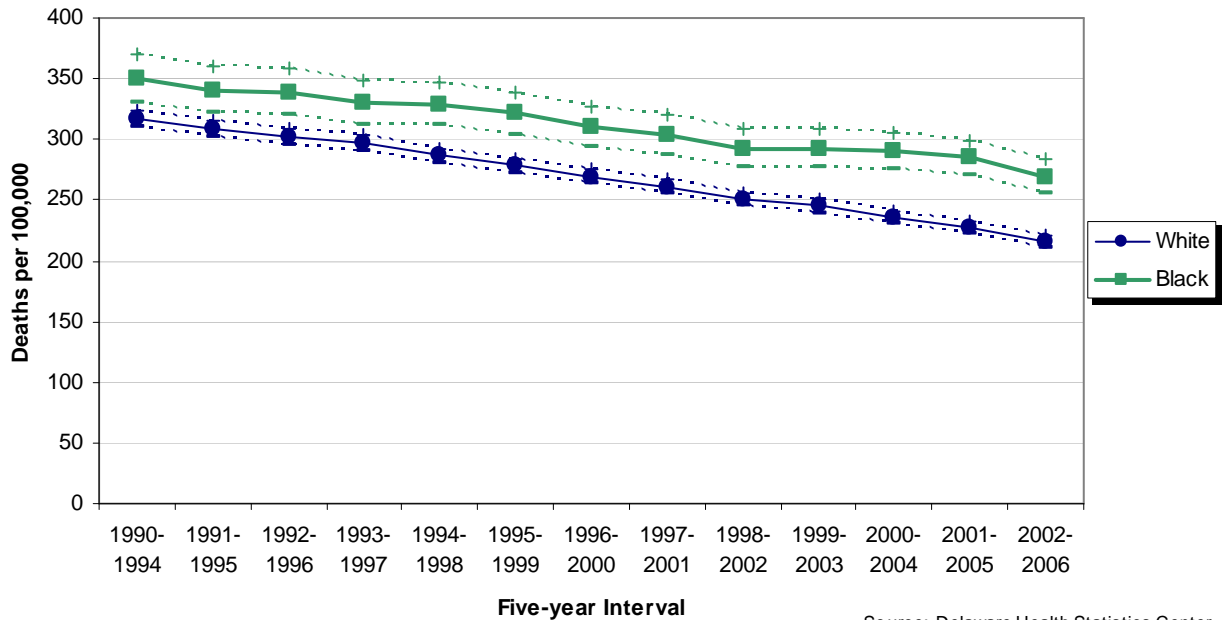
The same decreases seen in the age-adjusted mortality rates of both blacks and whites were reflected in the age-specific rates as well.

Cancer mortality rates for all age groups 15 and higher declined between 1990-1994 and 2002-2006. The 55-64 age group experienced the largest decrease.

## MORTALITY

Heart disease remained the most common cause of death for both black and white Delawareans in 2002-2006. Both black and white heart disease mortality rates have declined significantly since 1990-1994, though black rates continued to be higher than white rates.

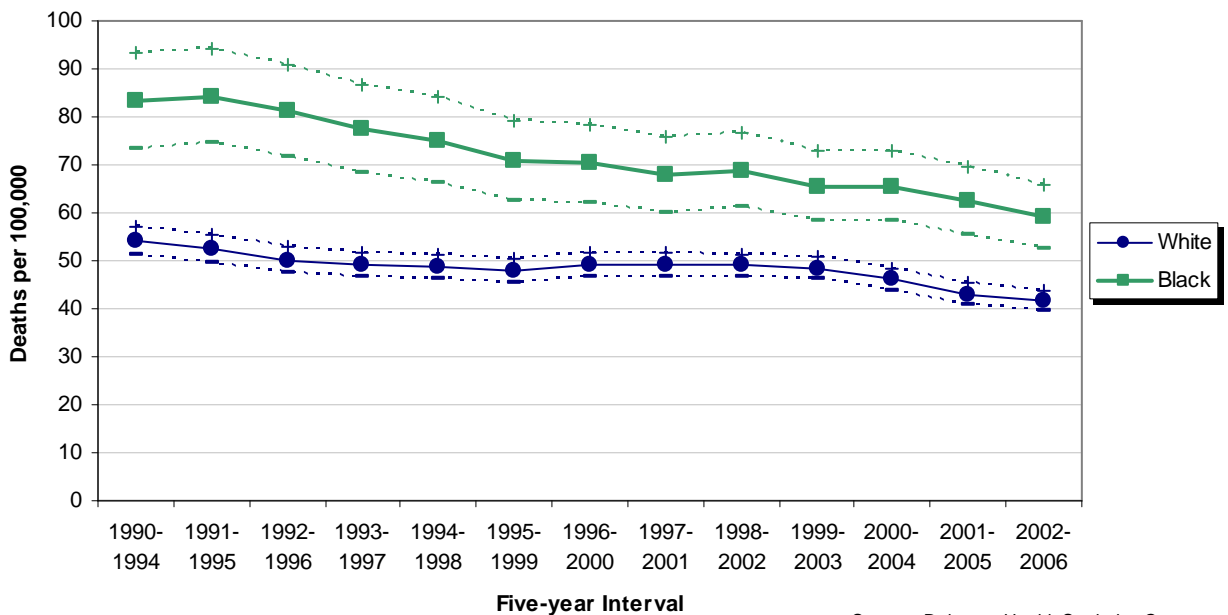
**Five-year Age-Adjusted Heart Disease Mortality Rates by Race  
Delaware, 1990-2006**



Source: Delaware Health Statistics Center

Like heart disease, stroke mortality rates for both races continued their downward trends, and the black rates remained significantly higher than white rates.

**Five-year Age-Adjusted Stroke Mortality Rates by Race  
Delaware, 1990-2006**

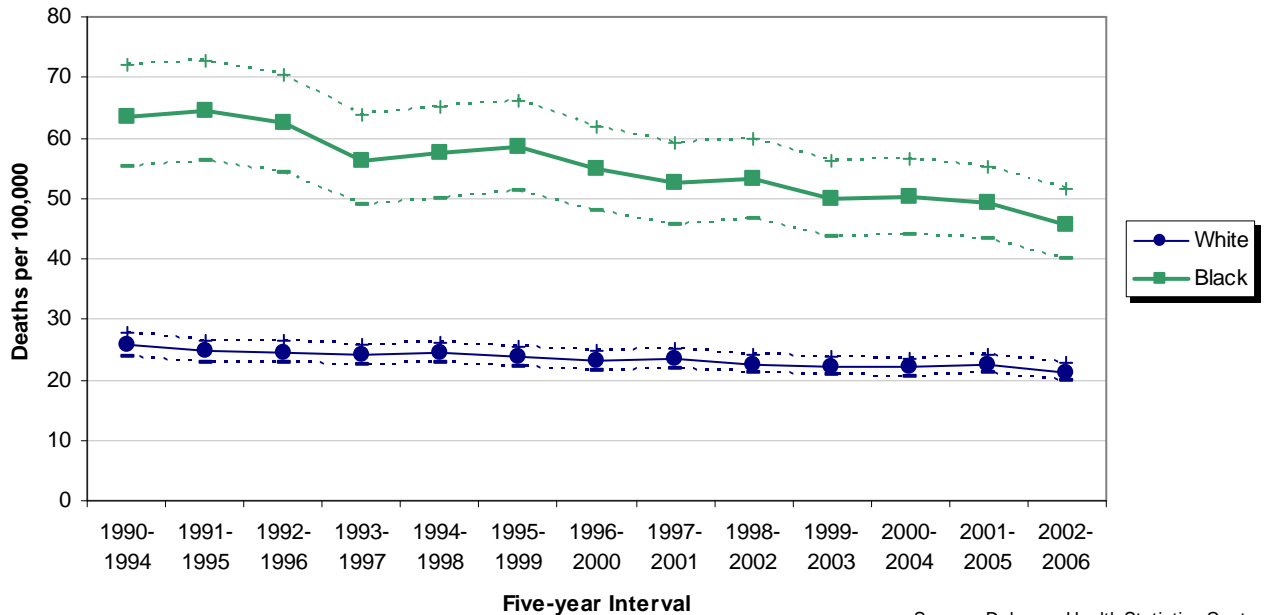


Source: Delaware Health Statistics Center

## MORTALITY

Though black mortality rates for Diabetes have been declining since 1990-1994, they remained more than twice that of whites.

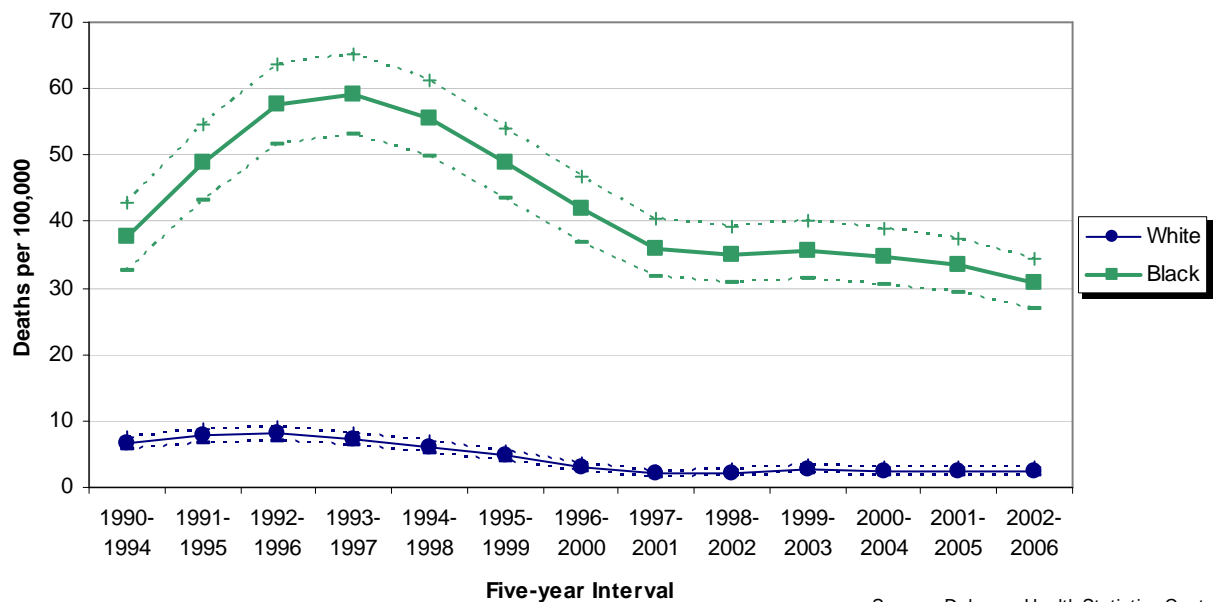
**Five-year Age-Adjusted Diabetes Mortality Rates by Race  
Delaware, 1990-2006**



Source: Delaware Health Statistics Center

HIV/AIDS mortality has disproportionately affected Delaware's black population. Despite black HIV/AIDS mortality rates decreasing significantly since the 1993-1997 peak, their 2002-2006 mortality rate of 30.7 deaths per 100,000 was 17 times that of whites. Though they made up only 21 percent of the total Delaware population in 2002-2006, blacks accounted for 77 percent of all deaths due to HIV/AIDS.

**Five-year Age-Adjusted HIV/AIDS Mortality Rates by Race  
Delaware, 1990-2006**



Source: Delaware Health Statistics Center

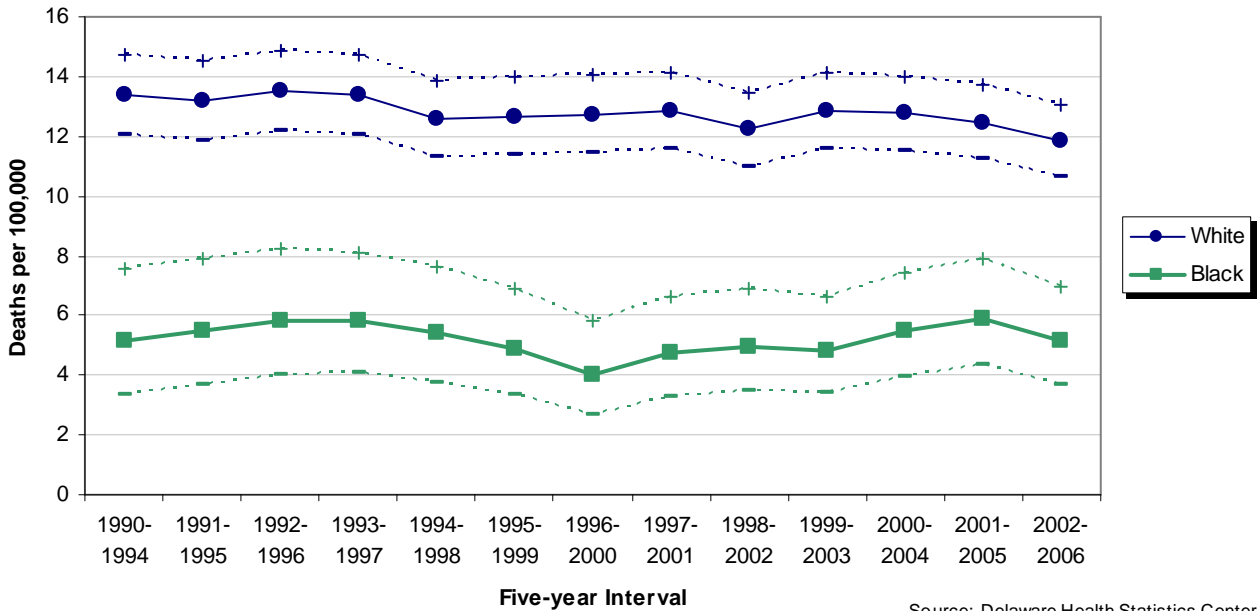
In 2002-2006, HIV was the fifth leading cause of death for black Delawareans; it ranked third for black males and fifth for black females.

For black males ages 25-44, it was the second most common cause of death, and for black females 25-44 it was the most common cause of death.

## MORTALITY

Suicide mortality trends for both black and white populations remained fairly stable from 1990-1994 to 2002-2006, with the white rate (11.8) more than double that of the black rate (5.1).

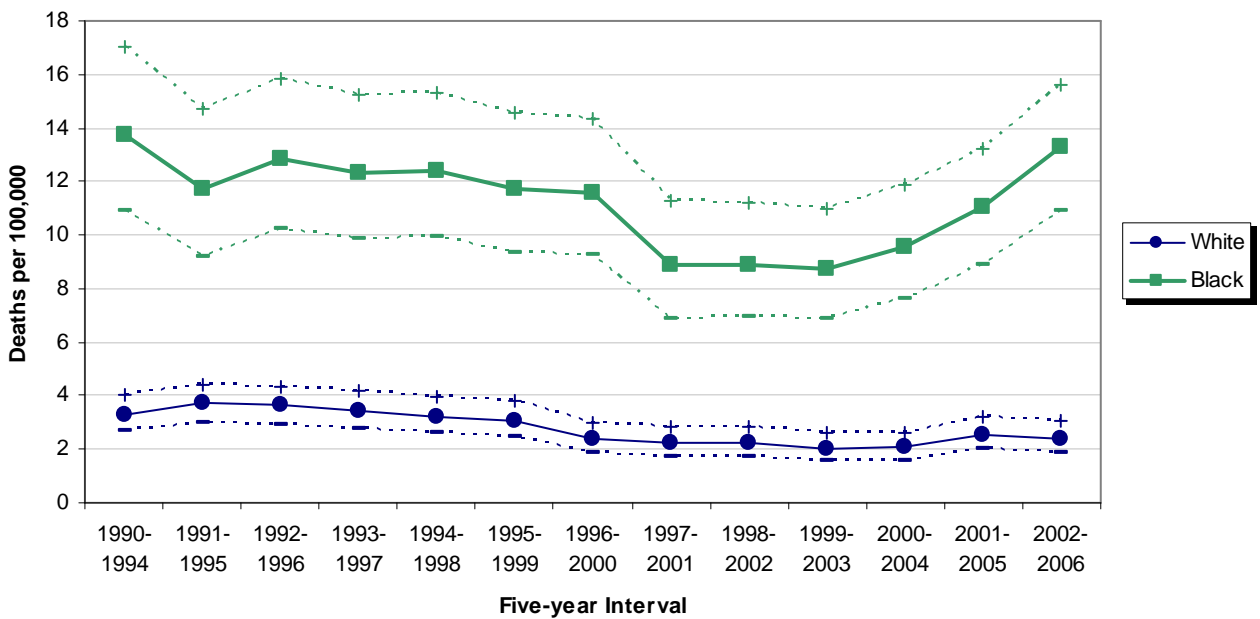
**Five-year Age-Adjusted Suicide Mortality Rates by Race  
Delaware, 1990-2006**



Source: Delaware Health Statistics Center

Throughout most of the 90s, both black and white homicide mortality rates demonstrated a declining trend. Recently, mortality rates for whites have remained fairly stable, while mortality rates for blacks have increased 52 percent from 1999-2003 to 2002-2006. The 2002-2006 homicide mortality rate for blacks (13.3) was 5.5 times that of whites (2.4).

**Five-year Age-Adjusted Homicide Mortality Rates by Race  
Delaware, 1990-2006**



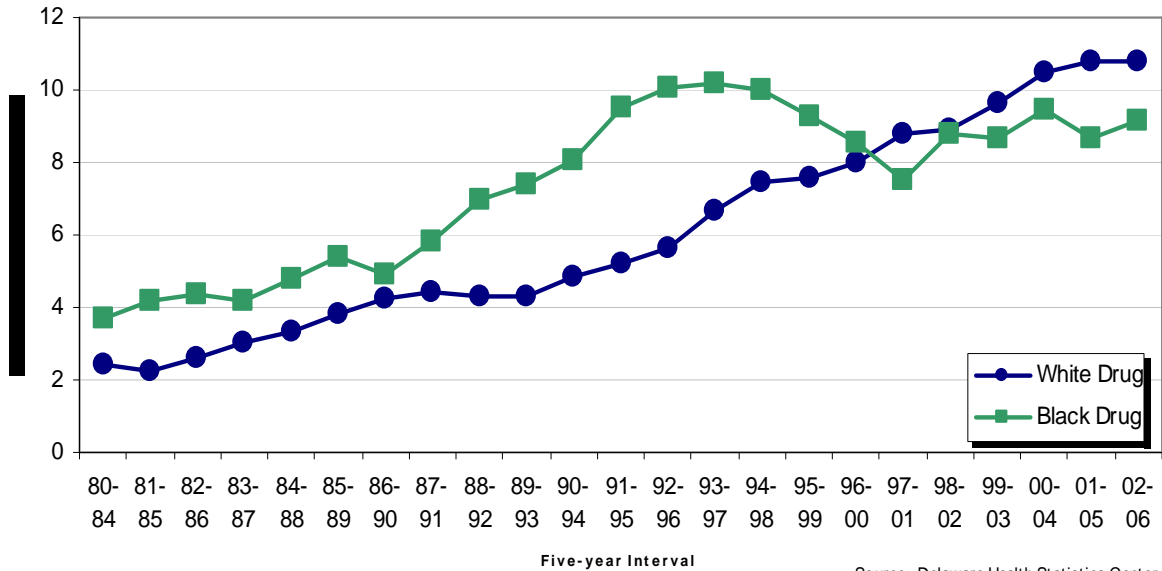
Source: Delaware Health Statistics Center



## MORTALITY

Though black mortality rates for drug-induced deaths were historically higher than white rates, in 1994-1998 they began a four year decline that moved them just below white rates in 1997-2001. Since then, white mortality rates have remained slightly higher. Overall, black and white mortality rates for drug-induced deaths increased by 148 and 345 percent from 1980-1984 to 2002-2006.

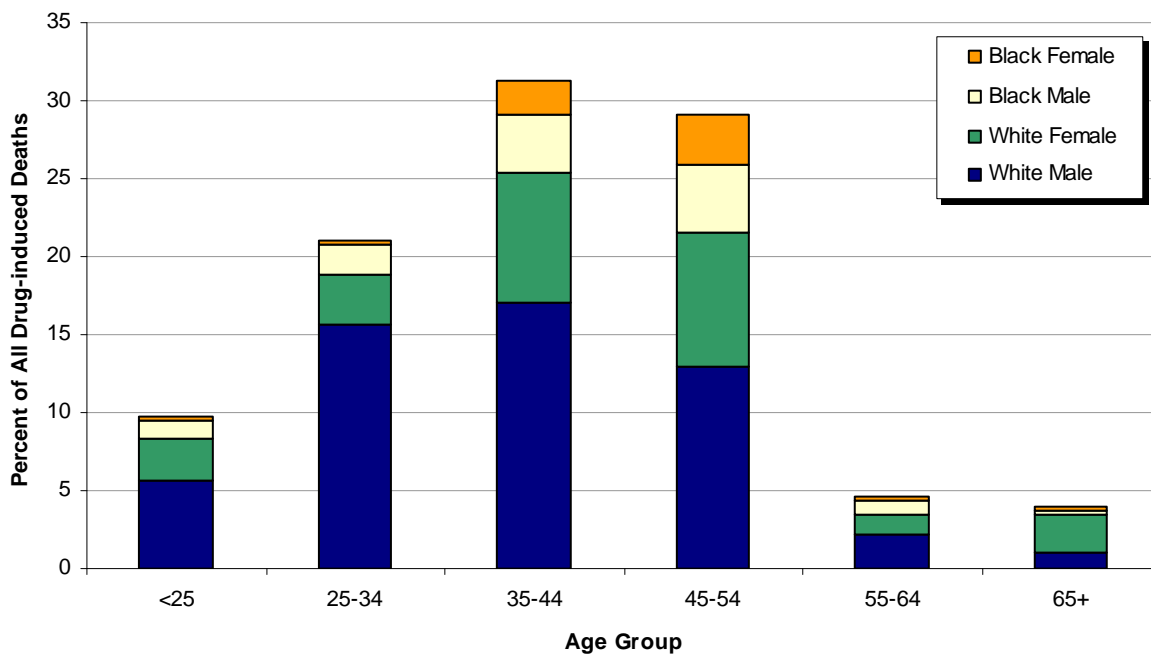
**Five-year Age-adjusted Mortality Rates for Drug-Induced Deaths by Race  
Delaware, 1980-2006**



Source: Delaware Health Statistics Center

Over half (55 percent) of all drug-induced deaths in 2002-2006 were white males. Of all the race-age groups, white males ages 35-44 were responsible for the single largest proportion (17 percent) of drug-induced deaths.

**Distribution of Drug-induced Deaths by Race, Sex, and Age Group  
Delaware 2002-2006**



Source: Delaware Health Statistics Center

TABLE F-1  
NUMBER OF DEATHS BY RACE

U.S., DELAWARE, COUNTIES AND CITY OF WILMINGTON, 1993-2006

Area/ Race	1993	1994	1995	1996	1997	1998	1999	2000	2001	2002	2003	2004	2005	2006
<b>U.S.</b>														
All Races	2268553	2278994	2312132	2314690	2314245	2337256	2391399	2403351	2416425	2443387	2448288	2397615	2448017	2425900
White	1951437	1959875	1987437	1992966	1996393	2015984	2061348	2071287	2079691	2102589	2103714	2056643	2098097	2077384
Black	282151	282379	286401	282089	276520	278440	285064	285826	287709	290051	291300	287315	292808	289692
Other	34965	36740	38294	39635	41332	42832	44987	46238	49025	50747	53274	53657	57112	58824
<b>Delaware</b>														
All Races	6152	6337	6281	6506	6510	6577	6669	6872	7114	6860	7067	7124	7422	7144
White	5057	5259	5124	5295	5449	5453	5555	5696	5886	5694	5782	5862	6127	5856
Black	1067	1038	1108	1166	1014	1086	1072	1131	1180	1111	1241	1204	1235	1225
Other	28	40	49	45	47	38	42	45	48	55	44	58	60	63
<b>Kent</b>														
All Races	931	941	966	1003	998	1015	1102	1022	1102	1113	1114	1154	1250	1219
White	751	778	790	813	837	835	924	822	900	916	878	948	1017	967
Black	173	152	169	183	147	173	167	184	194	187	224	193	224	234
Other	7	11	7	7	14	7	11	16	8	10	12	13	9	18
<b>New Castle</b>														
All Races	3801	3910	3796	3967	3951	4030	3931	4111	4234	3996	4129	4146	4227	4039
White	3102	3196	3030	3201	3250	3281	3217	3350	3435	3244	3299	3324	3379	3212
Black	689	696	744	749	677	731	692	741	774	718	809	793	809	794
Other	10	18	22	17	24	18	22	20	25	34	21	29	39	33
Wilmington														
All Races	940	955	944	890	864	850	789	826	850	779	843	782	763	728
White	497	511	448	436	479	423	395	430	421	392	413	358	360	337
Black	442	443	492	453	383	425	392	394	425	380	430	419	401	385
Other	1	1	4	1	2	2	2	2	4	7	0	5	2	6
Balance of NC County														
All Races	2861	2955	2852	3077	3087	3180	3142	3285	3384	3217	3286	3364	3464	3311
White	2605	2685	2582	2765	2771	2858	2822	2920	3014	2852	2886	2966	3019	2875
Black	247	253	252	296	294	306	300	347	349	338	379	374	408	409
Other	9	17	18	16	22	16	20	18	21	27	21	24	37	27
<b>Sussex</b>														
All Races	1420	1486	1519	1536	1561	1532	1636	1739	1778	1751	1824	1824	1945	1886
White	1204	1285	1304	1281	1362	1337	1414	1524	1551	1534	1605	1590	1731	1677
Black	205	190	195	234	190	182	213	206	212	206	208	218	202	197
Other	11	11	20	21	9	13	9	9	15	11	11	16	12	12

NDRACE

**Note:**

2006 US data are preliminary numbers from NCHS.

**Sources:**

Delaware Health Statistics Center  
National Center for Health Statistics

TABLE F-2  
NUMBER OF DEATHS BY AGE, RACE, AND HISPANIC ORIGIN  
DELAWARE, COUNTIES AND CITY OF WILMINGTON, 2006

Area/ Age	Race									Hispanic Origin <sup>2</sup>
	All Races	White	Black	American Indian <sup>1</sup>	Asian or Pacific Islander (API)				All Other	
					Chinese	Japanese	Filipino	Other API		
<b>Delaware</b>	7144	5856	1225	21	3	0	3	30	6	126
<1	99	50	44	0	0	0	0	3	2	12
1-4	9	4	5	0	0	0	0	0	0	2
5-14	11	9	2	0	0	0	0	0	0	1
15-24	92	60	31	0	0	0	0	1	0	12
25-34	124	85	38	0	0	0	0	1	0	13
35-44	303	214	87	1	0	0	0	1	0	11
45-54	562	378	177	1	1	0	0	5	0	17
55-64	848	648	189	4	0	0	1	5	1	19
65-74	1232	979	237	7	1	0	2	5	1	16
75+	3863	3428	415	8	1	0	0	9	2	23
Unknown	1	1	0	0	0	0	0	0	0	0
<b>Kent</b>	1219	967	234	11	0	0	2	3	2	21
<1	13	7	5	0	0	0	0	0	1	0
1-4	1	1	0	0	0	0	0	0	0	0
5-14	3	3	0	0	0	0	0	0	0	0
15-24	17	12	5	0	0	0	0	0	0	1
25-34	30	21	9	0	0	0	0	0	0	3
35-44	60	44	15	1	0	0	0	0	0	3
45-54	103	73	29	1	0	0	0	0	0	3
55-64	145	103	39	1	0	0	1	1	0	3
65-74	240	182	51	5	0	0	1	0	1	5
75+	607	521	81	3	0	0	0	2	0	3
Unknown	0	0	0	0	0	0	0	0	0	0
<b>New Castle</b>	4039	3212	794	5	2	0	0	24	2	82
<1	68	31	35	0	0	0	0	2	0	9
1-4	5	3	2	0	0	0	0	0	0	1
5-14	8	6	2	0	0	0	0	0	0	1
15-24	53	29	23	0	0	0	0	1	0	6
25-34	79	52	26	0	0	0	0	1	0	7
35-44	173	111	61	0	0	0	0	1	0	5
45-54	343	214	124	0	0	0	0	5	0	14
55-64	473	341	126	1	0	0	0	4	1	15
65-74	617	458	153	1	1	0	0	4	0	8
75+	2220	1967	242	3	1	0	0	6	1	16
Unknown	0	0	0	0	0	0	0	0	0	0
<b>Wilmington</b>	728	337	385	4	0	0	0	2	0	22
<1	16	2	14	0	0	0	0	0	0	1
1-4	1	0	1	0	0	0	0	0	0	0
5-14	2	0	2	0	0	0	0	0	0	0
15-24	12	2	10	0	0	0	0	0	0	0
25-34	20	6	14	0	0	0	0	0	0	3
35-44	35	9	26	0	0	0	0	0	0	2
45-54	89	23	65	0	0	0	0	1	0	6
55-64	101	36	65	0	0	0	0	0	0	6
65-74	118	41	75	1	0	0	0	1	0	1
75+	334	218	113	3	0	0	0	0	0	3
Unknown	0	0	0	0	0	0	0	0	0	0
<b>Balance of NC County</b>	3311	2875	409	1	2	0	0	22	2	60
<1	52	29	21	0	0	0	0	2	0	8
1-4	4	3	1	0	0	0	0	0	0	1
5-14	6	6	0	0	0	0	0	0	0	1
15-24	41	27	13	0	0	0	0	1	0	6
25-34	59	46	12	0	0	0	0	1	0	4
35-44	138	102	35	0	0	0	0	1	0	3
45-54	254	191	59	0	0	0	0	4	0	8
55-64	372	305	61	1	0	0	0	4	1	9
65-74	499	417	78	0	1	0	0	3	0	7
75+	1886	1749	129	0	1	0	0	6	1	13
Unknown	0	0	0	0	0	0	0	0	0	0
<b>Sussex</b>	1886	1677	197	5	1	0	1	3	2	23
<1	18	12	4	0	0	0	0	1	1	3
1-4	3	0	3	0	0	0	0	0	0	1
5-14	0	0	0	0	0	0	0	0	0	0
15-24	22	19	3	0	0	0	0	0	0	5
25-34	15	12	3	0	0	0	0	0	0	3
35-44	70	59	11	0	0	0	0	0	0	3
45-54	116	91	24	0	1	0	0	0	0	0
55-64	230	204	24	2	0	0	0	0	0	1
65-74	375	339	33	1	0	0	1	1	0	3
75+	1036	940	92	2	0	0	0	1	1	4
Unknown	1	1	0	0	0	0	0	0	0	0

DETRACE

**Notes:**

1. Includes any deaths that may have occurred to Aleut and Eskimo Indians.
2. People of Hispanic origin may be of any race. See *Hispanic Origin* and *Race* in the Technical Notes.

**Source:**

Delaware Health Statistics Center

TABLE F-3  
NUMBER OF DEATHS BY AGE AND RACE  
DELAWARE, COUNTIES AND CITY OF WILMINGTON, 2006

(BOTH SEXES)

Area/ Race	Age of Decedent													
	Total	< 1	1-4	5-9	10-14	15-19	20-24	25-34	35-44	45-54	55-64	65-74	75+	Unk
<b>Delaware</b>														
All Races	7144	99	9	6	5	42	50	124	303	562	848	1232	3863	1
White	5856	50	4	6	3	28	32	85	214	378	648	979	3428	1
Black	1225	44	5	0	2	13	18	38	87	177	189	237	415	0
Other	63	5	0	0	0	1	0	1	2	7	11	16	20	0
<b>Kent</b>														
All Races	1219	13	1	3	0	8	9	30	60	103	145	240	607	0
White	967	7	1	3	0	5	7	21	44	73	103	182	521	0
Black	234	5	0	0	0	3	2	9	15	29	39	51	81	0
Other	18	1	0	0	0	0	0	0	1	1	3	7	5	0
<b>New Castle</b>														
All Races	4039	68	5	3	5	21	32	79	173	343	473	617	2220	0
White	3212	31	3	3	3	12	17	52	111	214	341	458	1967	0
Black	794	35	2	0	2	8	15	26	61	124	126	153	242	0
Other	33	2	0	0	0	1	0	1	1	5	6	6	11	0
Wilmington														
All Races	728	16	1	0	2	5	7	20	35	89	101	118	334	0
White	337	2	0	0	0	1	1	6	9	23	36	41	218	0
Black	385	14	1	0	2	4	6	14	26	65	65	75	113	0
Other	6	0	0	0	0	0	0	0	0	1	0	2	3	0
Balance of NC County														
All Races	3311	52	4	3	3	16	25	59	138	254	372	499	1886	0
White	2875	29	3	3	3	11	16	46	102	191	305	417	1749	0
Black	409	21	1	0	0	4	9	12	35	59	61	78	129	0
Other	27	2	0	0	0	1	0	1	1	4	6	4	8	0
<b>Sussex</b>														
All Races	1886	18	3	0	0	13	9	15	70	116	230	375	1036	1
White	1677	12	0	0	0	11	8	12	59	91	204	339	940	1
Black	197	4	3	0	0	2	1	3	11	24	24	33	92	0
Other	12	2	0	0	0	0	0	0	0	1	2	3	4	0

Source:  
Delaware Health Statistics Center

NDAGERAC

TABLE F-4  
NUMBER OF DEATHS BY AGE AND RACE  
DELAWARE, COUNTIES AND CITY OF WILMINGTON, 2006

(MALES)

Area/ Race	Age of Decedent													Unk
	Total	< 1	1-4	5-9	10-14	15-19	20-24	25-34	35-44	45-54	55-64	65-74	75+	
<b>Delaware</b>														
All Races	3554	53	5	5	3	28	39	83	194	325	500	705	1613	1
White	2892	28	3	5	2	16	27	57	141	226	391	561	1434	1
Black	634	21	2	0	1	11	12	25	51	97	105	136	173	0
Other	28	4	0	0	0	1	0	1	2	2	4	8	6	0
<b>Kent</b>														
All Races	614	3	1	3	0	6	7	22	45	47	85	140	255	0
White	485	2	1	3	0	3	6	15	32	33	59	105	226	0
Black	121	0	0	0	0	3	1	7	12	13	25	32	28	0
Other	8	1	0	0	0	0	0	0	1	1	1	3	1	0
<b>New Castle</b>														
All Races	1981	39	3	2	3	16	24	52	110	202	278	334	918	0
White	1550	18	2	2	2	7	13	34	75	132	209	243	813	0
Black	416	19	1	0	1	8	11	17	34	69	67	88	101	0
Other	15	2	0	0	0	1	0	1	1	1	2	3	4	0
Wilmington														
All Races	354	8	0	0	1	5	6	14	21	51	53	63	132	0
White	160	2	0	0	0	1	1	5	4	16	21	22	88	0
Black	191	6	0	0	1	4	5	9	17	35	32	39	43	0
Other	3	0	0	0	0	0	0	0	0	0	0	2	1	0
Balance of NC County														
All Races	1627	31	3	2	2	11	18	38	89	151	225	271	786	0
White	1390	16	2	2	2	6	12	29	71	116	188	221	725	0
Black	225	13	1	0	0	4	6	8	17	34	35	49	58	0
Other	12	2	0	0	0	1	0	1	1	1	2	1	3	0
<b>Sussex</b>														
All Races	959	11	1	0	0	6	8	9	39	76	137	231	440	1
White	857	8	0	0	0	6	8	8	34	61	123	213	395	1
Black	97	2	1	0	0	0	0	1	5	15	13	16	44	0
Other	5	1	0	0	0	0	0	0	0	0	1	2	1	0

Source:  
Delaware Health Statistics Center

NDRCAGML

TABLE F-5  
NUMBER OF DEATHS BY AGE AND RACE  
DELAWARE, COUNTIES AND CITY OF WILMINGTON, 2006

(FEMALES)

Area/ Race	Age of Decedent													Unk
	Total	< 1	1-4	5-9	10-14	15-19	20-24	25-34	35-44	45-54	55-64	65-74	75+	
<b>Delaware</b>														
All Races	3590	46	4	1	2	14	11	41	109	237	348	527	2250	0
White	2964	22	1	1	1	12	5	28	73	152	257	418	1994	0
Black	591	23	3	0	1	2	6	13	36	80	84	101	242	0
Other	35	1	0	0	0	0	0	0	0	5	7	8	14	0
<b>Kent</b>														
All Races	605	10	0	0	0	2	2	8	15	56	60	100	352	0
White	482	5	0	0	0	2	1	6	12	40	44	77	295	0
Black	113	5	0	0	0	0	1	2	3	16	14	19	53	0
Other	10	0	0	0	0	0	0	0	0	0	2	4	4	0
<b>New Castle</b>														
All Races	2058	29	2	1	2	5	8	27	63	141	195	283	1302	0
White	1662	13	1	1	1	5	4	18	36	82	132	215	1154	0
Black	378	16	1	0	1	0	4	9	27	55	59	65	141	0
Other	18	0	0	0	0	0	0	0	0	4	4	3	7	0
Wilmington														
All Races	374	8	1	0	1	0	1	6	14	38	48	55	202	0
White	177	0	0	0	0	0	0	1	5	7	15	19	130	0
Black	194	8	1	0	1	0	1	5	9	30	33	36	70	0
Other	3	0	0	0	0	0	0	0	0	1	0	0	2	0
Balance of NC County														
All Races	1684	21	1	1	1	5	7	21	49	103	147	228	1100	0
White	1485	13	1	1	1	5	4	17	31	75	117	196	1024	0
Black	184	8	0	0	0	0	3	4	18	25	26	29	71	0
Other	15	0	0	0	0	0	0	0	0	3	4	3	5	0
<b>Sussex</b>														
All Races	927	7	2	0	0	7	1	6	31	40	93	144	596	0
White	820	4	0	0	0	5	0	4	25	30	81	126	545	0
Black	100	2	2	0	0	2	1	2	6	9	11	17	48	0
Other	7	1	0	0	0	0	0	0	0	1	1	1	3	0

Source:  
Delaware Health Statistics Center

NDRCAGFE

TABLE F-6  
MORTALITY TRENDS BY RACE, ETHNICITY, GENDER, AND AGE  
DELAWARE, 1996-2006

CHARACTERISTIC	Year											
	1996	1997	1998	1999	2000	2001	2002	2003	2004	2005	2006	
<b>Resident Deaths</b>												
Number	6506	6510	6577	6669	6872	7114	6860	7067	7124	7422	7144	
Crude Rate	878.0	866.3	861.6	860.5	873.8	894.4	851.4	864.1	858.2	881.7	837.1	
AADR*	936.8	914.3	899.9	886.2	881.5	890.8	835.5	831.9	810.6	814.3	759.6	
<b>Decedent's Race/Ethnicity</b>												
White	Number	5295	5449	5453	5555	5696	5886	5694	5782	5862	6127	5856
	Percent	81.4%	83.7%	82.9%	83.3%	82.9%	82.7%	83.0%	81.8%	82.3%	82.6%	82.0%
	AADR*	884.1	887.3	866.9	859.9	847.9	856.0	807.5	793.0	780.7	787.4	732.7
Black	Number	1166	1014	1086	1072	1131	1180	1111	1241	1204	1235	1225
	Percent	17.9%	15.6%	16.5%	16.1%	16.5%	16.6%	16.2%	17.6%	16.9%	16.6%	17.1%
	AADR*	1300.9	1102.0	1145.2	1078.5	1089.7	1088.3	998.7	1070.9	1014.0	986.1	915.3
Hispanic <sup>1</sup>	Number	57	72	72	93	101	90	95	105	121	119	126
	Percent	0.9%	1.1%	1.1%	1.4%	1.5%	1.3%	1.4%	1.5%	1.7%	1.6%	1.8%
	AADR*	462.4	622.2	612.4	683.9	759.2	613.7	618.8	593.1	682.4	571.9	479.5
<b>Decedent's Gender</b>												
Female	Number	3220	3292	3284	3326	3503	3663	3486	3559	3517	3744	3590
	Percent	49.5%	50.6%	49.9%	49.9%	51.0%	51.5%	50.8%	50.4%	49.4%	50.4%	50.3%
	AADR*	772.7	770.7	748.7	736.4	749.5	769.7	710.8	702.2	675.6	689.8	643.6
Male	Number	3286	3218	3293	3343	3369	3451	3374	3508	3607	3678	3554
	Percent	50.5%	49.4%	50.1%	50.1%	49.0%	48.5%	49.2%	49.6%	50.6%	49.6%	49.7%
	AADR*	1177.0	1112.3	1115.3	1095.6	1055.0	1055.4	1000.0	994.4	994.1	974.0	903.9
<b>Decedent's age</b>												
<1	Number	77	81	103	81	102	114	96	107	97	104	99
	Percent	1.2%	1.2%	1.6%	1.2%	1.5%	1.6%	1.4%	1.5%	1.4%	1.4%	1.4%
1-14	Number	27	35	32	31	41	31	39	22	44	26	20
	Percent	0.4%	0.5%	0.5%	0.5%	0.6%	0.4%	0.6%	0.3%	0.6%	0.4%	0.3%
15-24	Number	64	71	70	61	85	86	85	101	97	78	92
	Percent	1.0%	1.1%	1.1%	0.9%	1.2%	1.2%	1.2%	1.4%	1.4%	1.1%	1.3%
25-44	Number	504	430	399	408	426	427	403	389	387	375	427
	Percent	7.7%	6.6%	6.1%	6.1%	6.2%	6.0%	5.9%	5.5%	5.4%	5.1%	6.0%
45-64	Number	1162	1121	1125	1101	1168	1276	1214	1327	1338	1406	1410
	Percent	17.9%	17.2%	17.1%	16.5%	17.0%	17.9%	17.7%	18.8%	18.8%	18.9%	19.7%
65-74	Number	1476	1447	1363	1452	1332	1339	1276	1244	1310	1272	1232
	Percent	22.7%	22.2%	20.7%	21.8%	19.4%	18.8%	18.6%	17.6%	18.4%	17.1%	17.2%
75-84	Number	1745	1881	2018	1989	1991	2139	2061	2096	2039	2160	1960
	Percent	26.8%	28.9%	30.7%	29.8%	29.0%	30.1%	30.0%	29.7%	28.6%	29.1%	27.4%
85+	Number	1451	1444	1467	1546	1727	1702	1686	1781	1812	2001	1904
	Percent	22.3%	22.2%	22.3%	23.2%	25.1%	23.9%	24.6%	25.2%	25.4%	27.0%	26.7%

NDRTREND

**Notes:**

- Hispanic population numbers used in rate calculations are based on U.S. Census estimates. Because of the small numbers of Hispanic deaths and the resulting variability in annual mortality rates, Hispanic mortality rates should be interpreted with caution.
- \*Age-Adjusted Death Rate per 100,000, adjusted to 2000 U.S. Standard Population.

**Sources:**

Delaware Health Statistics Center  
U.S. Census

TABLE F-7  
NUMBER OF DEATHS AND MEDIAN AGE AT DEATH BY SEX  
FOR TWENTY LEADING CAUSES, ALCOHOL-INDUCED DEATHS, AND DRUG-INDUCED DEATHS  
DELAWARE, 2006

Cause of Death <sup>1</sup>	Deaths		Median Age at Death	
	Number	Percent	Male	Female
All causes	7,144	100.0	73	80
Diseases of heart	1,846	25.8	76	84
Malignant neoplasms	1,767	24.7	72	71
Cerebrovascular diseases	383	5.4	77	84
Chronic lower respiratory diseases	344	4.8	78	79
Accidents (unintentional injuries)	322	4.5	44	58
Dementia	258	3.6	85	88
Diabetes mellitus	190	2.7	74	75
Alzheimer's disease	189	2.6	85	88
Nephritis, nephrotic syndrome & nephrosis	152	2.1	75	86
Influenza & pneumonia	137	1.9	80	83
Septicemia	116	1.6	70	79
Other diseases of respiratory system	92	1.3	78	81
Intentional self-harm (suicide)	88	1.2	44	46
Chronic liver disease & cirrhosis	73	1.0	58	69
Certain conditions originating in the perinatal period	56	0.8	0	0
Human immunodeficiency virus (HIV) disease	53	0.7	48	48
Other diseases of circulatory system	51	0.7	77	85
Pneumonitis due to solids & liquids	49	0.7	81	89
Assault (homicide)	48	0.7	26	37
Parkinson's disease	46	0.6	82	83
Alcohol-induced deaths <sup>2</sup>	57	0.8	58	49
Drug-induced deaths <sup>2</sup>	79	1.1	37	40

LCODARBS

**Notes:**

1. Classified according to ICD-10 Codes, Tenth Revision. See Appendix E for listing of ICD-10 Codes.
2. Included in selected categories.

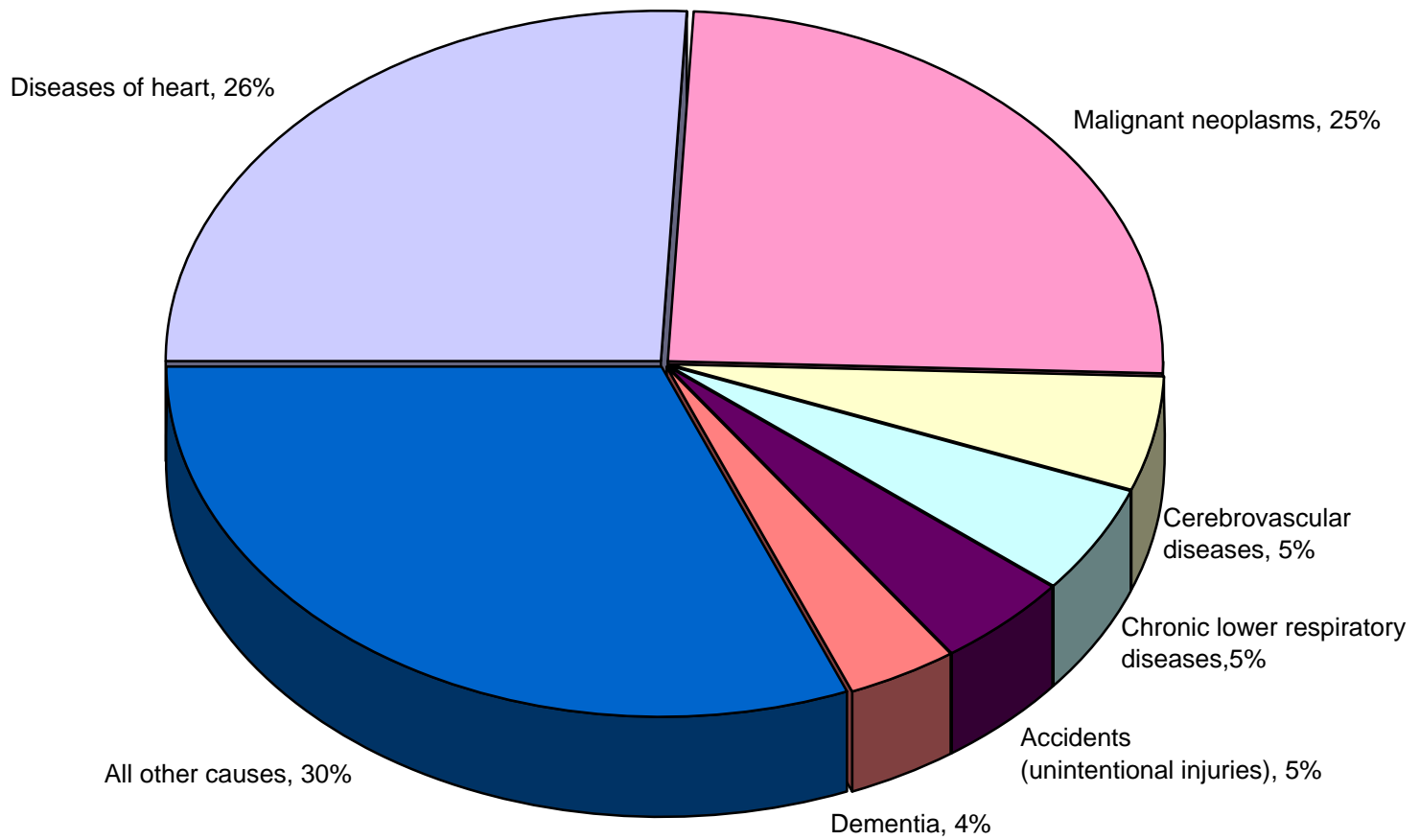
**Source:**

Delaware Health Statistics Center



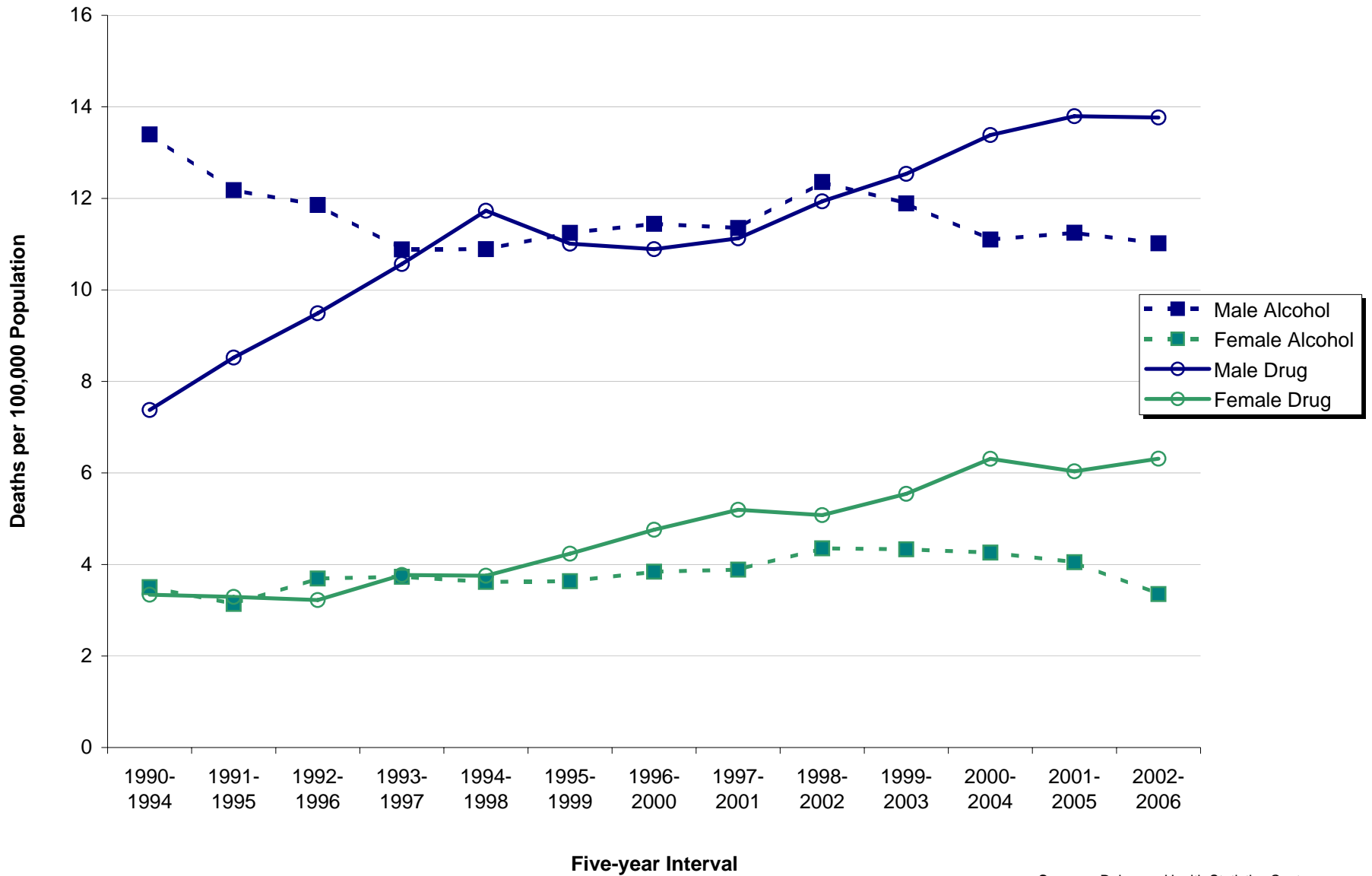
**Figure F-1  
Leading Causes of Death**

**Delaware, 2006**



**Source:** Delaware Health Statistics Center

**Figure F-2**  
**Five-year Age-adjusted Drug- and Alcohol-Induced Mortality Rates by Sex**  
**Delaware, 1990-2006**



Source: Delaware Health Statistics Center

TABLE F-8  
LEADING CAUSES OF DEATH  
COUNTIES AND CITY OF WILMINGTON, 2002-2006

**Kent**

Cause of Death*	Deaths	
	#	%
Diseases of heart	1726	29.5
Malignant neoplasms	1391	23.8
Chronic lower respiratory diseases	324	5.5
Cerebrovascular diseases	306	5.2
Accidents (unintentional injuries)	276	4.7
Diabetes mellitus	202	3.5
Influenza & pneumonia	126	2.2
Septicemia	122	2.1
Nephritis, nephrotic syndrome & nephrosis	107	1.8
Alzheimer's disease	80	1.4
Intentional self-harm (suicide)	72	1.2
Aortic aneurysm and dissection	69	1.2
Chronic liver disease & cirrhosis	69	1.2
Essential hypertension & hypertensive renal disease	58	1.0
Certain conditions originating in the perinatal period	47	0.8
In situ, benign, & neoplasms of unk behavior	40	0.7
All other causes	835	14.3
<b>Total</b>	<b>5850</b>	<b>100</b>

**New Castle**

Cause of Death*	Deaths	
	#	%
Diseases of heart	5523	26.9
Malignant neoplasms	4929	24.0
Cerebrovascular diseases	1196	5.8
Chronic lower respiratory diseases	969	4.7
Accidents (unintentional injuries)	820	4.0
Diabetes mellitus	614	3.0
Alzheimer's disease	456	2.2
Nephritis, nephrotic syndrome & nephrosis	378	1.8
Septicemia	371	1.8
Influenza & pneumonia	359	1.7
Intentional self-harm (suicide)	262	1.3
Human immunodeficiency virus (HIV) disease	256	1.2
Chronic liver disease & cirrhosis	230	1.1
Aortic aneurysm and dissection	218	1.1
Certain conditions originating in the perinatal period	204	1.0
Pneumonitis due to solids & liquids	186	0.9
All other causes	3566	17.4
<b>Total</b>	<b>20537</b>	<b>100</b>

**City of Wilmington**

Cause of Death*	Deaths	
	#	%
Diseases of heart	1036	26.6
Malignant neoplasms	775	19.9
Cerebrovascular diseases	255	6.5
Chronic lower respiratory diseases	162	4.2
Accidents (unintentional injuries)	151	3.9
Human immunodeficiency virus (HIV) disease	148	3.8
Diabetes mellitus	128	3.3
Nephritis, nephrotic syndrome & nephrosis	83	2.1
Septicemia	78	2.0
Influenza & pneumonia	68	1.7
Assault (homicide)	63	1.6
Essential hypertension & hypertensive renal disease	53	1.4
Aortic aneurysm and dissection	49	1.3
Alzheimer's disease	48	1.2
Certain conditions originating in the perinatal period	46	1.2
Intentional self-harm (suicide)	43	1.1
All other causes	709	18.2
<b>Total</b>	<b>3895</b>	<b>100</b>

**Sussex**

Cause of Death*	Deaths	
	#	%
Diseases of heart	2569	27.8
Malignant neoplasms	2392	25.9
Chronic lower respiratory diseases	497	5.4
Cerebrovascular diseases	422	4.6
Accidents (unintentional injuries)	382	4.1
Diabetes mellitus	271	2.9
Alzheimer's disease	261	2.8
Influenza & pneumonia	249	2.7
Nephritis, nephrotic syndrome & nephrosis	167	1.8
Septicemia	136	1.5
Chronic liver disease & cirrhosis	108	1.2
Aortic aneurysm and dissection	102	1.1
Intentional self-harm (suicide)	98	1.1
Pneumonitis due to solids & liquids	91	1.0
Essential hypertension & hypertensive renal disease	64	0.7
Parkinson's disease	60	0.7
All other causes	1361	14.7
<b>Total</b>	<b>9230</b>	<b>100</b>

**Note:**

\*Cause of death categories were derived using the NCHS list of 50 rankable causes of death as specified by NCHS. For specific codes, see Appendix E.

**Source:**

Delaware Health Statistics Center

LC0BCTW

TABLE F-9  
TEN LEADING CAUSES OF DEATH BY SEX AND RACE GROUP  
DELAWARE, 2002-2006

All Races, Male

Cause of Death*	Deaths	
	#	%
Diseases of heart	4862	27.4
Malignant neoplasms	4603	26.0
Accidents (unintentional injuries)	959	5.4
Chronic lower respiratory diseases	809	4.6
Cerebrovascular diseases	759	4.3
Diabetes mellitus	519	2.9
Influenza & pneumonia	347	2.0
Nephritis, nephrotic syndrome & nephrosis	347	2.0
Intentional self-harm (suicide)	346	2.0
Septicemia	280	1.6
All other causes	3890	22.0
<b>Total</b>	<b>17721</b>	<b>100</b>

All Races, Female

Cause of Death*	Deaths	
	#	%
Diseases of heart	4956	27.7
Malignant neoplasms	4109	23.0
Cerebrovascular diseases	1165	6.5
Chronic lower respiratory diseases	981	5.5
Diabetes mellitus	568	3.2
Alzheimer's disease	558	3.1
Accidents (unintentional injuries)	519	2.9
Influenza & pneumonia	387	2.2
Septicemia	349	2.0
Nephritis, nephrotic syndrome & nephrosis	305	1.7
All other causes	3999	22.3
<b>Total</b>	<b>17896</b>	<b>100</b>

White, Both Sexes

Cause of Death*	Deaths	
	#	%
Diseases of heart	8227	28.1
Malignant neoplasms	7283	24.8
Chronic lower respiratory diseases	1609	5.5
Cerebrovascular diseases	1589	5.4
Accidents (unintentional injuries)	1238	4.2
Diabetes mellitus	812	2.8
Alzheimer's disease	722	2.5
Influenza & pneumonia	640	2.2
Septicemia	494	1.7
Nephritis, nephrotic syndrome & nephrosis	494	1.7
All other causes	6213	21.2
<b>Total</b>	<b>29321</b>	<b>100</b>

Black, Both Sexes

Cause of Death*	Deaths	
	#	%
Diseases of heart	1522	25.3
Malignant neoplasms	1363	22.7
Cerebrovascular diseases	323	5.4
Diabetes mellitus	260	4.3
Human immunodeficiency virus (HIV) disease	250	4.2
Accidents (unintentional injuries)	223	3.7
Chronic lower respiratory diseases	171	2.8
Nephritis, nephrotic syndrome & nephrosis	153	2.5
Certain conditions originating in the perinatal period	149	2.5
Septicemia	128	2.1
All other causes	1474	24.5
<b>Total</b>	<b>6016</b>	<b>100</b>

LCODMFWB

Hispanic, Both Sexes

Cause of Death*	Deaths	
	#	%
Accidents (unintentional injuries)	99	17.5
Malignant neoplasms	97	17.1
Diseases of heart	96	17.0
Certain conditions originating in the perinatal period	30	5.3
Cerebrovascular diseases	29	5.1
Assault (homicide)	14	2.5
Diabetes mellitus	12	2.1
Chronic lower respiratory diseases	12	2.1
Congenital malformations, deformations, & chromosomal abnormalities	12	2.1
Intentional self-harm (suicide)	12	2.1
All other causes	153	27.0
<b>Total</b>	<b>566</b>	<b>100</b>

Note:

\*Cause of death categories were derived using the NCHS list of 50 rankable causes of death as specified by NCHS. For specific codes, see Appendix E.

Source:

Delaware Health Statistics Center

TABLE F-10  
TEN LEADING CAUSES OF DEATH BY RACE-SEX GROUP  
DELAWARE, 2002-2006

**White Male**

Cause of Death*	Deaths	
	#	%
Diseases of heart	4071	28.1
Malignant neoplasms	3858	26.7
Accidents (unintentional injuries)	795	5.5
Chronic lower respiratory diseases	705	4.9
Cerebrovascular diseases	618	4.3
Diabetes mellitus	402	2.8
Intentional self-harm (suicide)	306	2.1
Influenza & pneumonia	295	2.0
Nephritis, nephrotic syndrome & nephrosis	264	1.8
Septicemia	228	1.6
All other causes	2921	20.2
<b>Total</b>	<b>14463</b>	<b>100</b>

**White Females**

Cause of Death*	Deaths	
	#	%
Diseases of heart	4156	28.0
Malignant neoplasms	3425	23.1
Cerebrovascular diseases	971	6.5
Chronic lower respiratory diseases	904	6.1
Alzheimer's disease	503	3.4
Accidents (unintentional injuries)	443	3.0
Diabetes mellitus	410	2.8
Influenza & pneumonia	345	2.3
Septicemia	266	1.8
Nephritis, nephrotic syndrome & nephrosis	230	1.5
All other causes	3205	21.6
<b>Total</b>	<b>14858</b>	<b>100</b>

**Black Males**

Cause of Death*	Deaths	
	#	%
Diseases of heart	753	24.2
Malignant neoplasms	712	22.9
Human immunodeficiency virus (HIV) disease	165	5.3
Accidents (unintentional injuries)	152	4.9
Cerebrovascular diseases	134	4.3
Diabetes mellitus	110	3.5
Assault (homicide)	109	3.5
Chronic lower respiratory diseases	95	3.0
Certain conditions originating in the perinatal period	83	2.7
Nephritis, nephrotic syndrome & nephrosis	81	2.6
All other causes	721	23.1
<b>Total</b>	<b>3115</b>	<b>100</b>

**Black Females**

Cause of Death*	Deaths	
	#	%
Diseases of heart	769	26.5
Malignant neoplasms	651	22.4
Cerebrovascular diseases	189	6.5
Diabetes mellitus	150	5.2
Human immunodeficiency virus (HIV) disease	85	2.9
Septicemia	78	2.7
Chronic lower respiratory diseases	76	2.6
Nephritis, nephrotic syndrome & nephrosis	72	2.5
Accidents (unintentional injuries)	71	2.4
Certain conditions originating in the perinatal period	66	2.3
All other causes	694	23.9
<b>Total</b>	<b>2901</b>	<b>100</b>

**Hispanic Males**

Cause of Death*	Deaths	
	#	%
Accidents (unintentional injuries)	80	24.0
Diseases of heart	55	16.5
Malignant neoplasms	52	15.6
Certain conditions originating in the perinatal period	16	4.8
Cerebrovascular diseases	13	3.9
Assault (homicide)	13	3.9
Intentional self-harm (suicide)	10	3.0
Human immunodeficiency virus (HIV) disease	7	2.1
Congenital malformations, deformations, & chromosomal abnormalities	5	1.5
Septicemia	5	1.5
All other causes	78	23.4
<b>Total</b>	<b>334</b>	<b>100</b>

**Hispanic Females**

Cause of Death*	Deaths	
	#	%
Malignant neoplasms	45	19.4
Diseases of heart	41	17.7
Accidents (unintentional injuries)	19	8.2
Cerebrovascular diseases	16	6.9
Certain conditions originating in the perinatal period	14	6.0
Diabetes mellitus	9	3.9
Chronic lower respiratory diseases	8	3.4
Alzheimer's disease	7	3.0
Congenital malformations, deformations, & chromosomal abnormalities	7	3.0
Septicemia	6	2.6
All other causes	60	25.9
<b>Total</b>	<b>232</b>	<b>100</b>

**Note:**

\*Cause of death categories were derived using the NCHS list of 50 rankable causes of death as specified by NCHS. For specific codes, see Appendix E.

LCODRCS

**Source:**

Delaware Health Statistics Center

TABLE F-11  
TEN LEADING CAUSES OF DEATH BY AGE  
DELAWARE, 2002-2006

1-4 Years

Cause of Death*	Deaths	
	Number	Percent
Accidents (unintentional injuries)	19	27.5
Malignant neoplasms	11	15.9
Congenital malformations, deformations, & chromosomal abnormalities	7	10.1
Diseases of heart	3	4.3
Cerebrovascular diseases	3	4.3
Influenza & pneumonia	2	2.9
Certain conditions originating in the perinatal period	2	2.9
All other causes	22	31.9
Total	69	100.0

5-14 Years

Cause of Death*	Deaths	
	Number	Percent
Accidents (unintentional injuries)	22	26.8
Malignant neoplasms	12	14.6
Congenital malformations, deformations, & chromosomal abnormalities	7	8.5
Assault (homicide)	7	8.5
Diseases of heart	4	4.9
Intentional self-harm (suicide)	4	4.9
Septicemia	2	2.4
Influenza & pneumonia	2	2.4
All other causes	22	26.8
Total	82	100.0

15-24 Years

Cause of Death*	Deaths	
	Number	Percent
Accidents (unintentional injuries)	218	48.1
Assault (homicide)	73	16.1
Intentional self-harm (suicide)	50	11.0
Malignant neoplasms	20	4.4
Diseases of heart	15	3.3
Congenital malformations, deformations, & Meningococcal infection	6	1.3
All other causes	68	15.0
Total	453	100

25-44 Years

Cause of Death*	Deaths	
	Number	Percent
Accidents (unintentional injuries)	424	21.4
Malignant neoplasms	281	14.2
Diseases of heart	281	14.2
Intentional self-harm (suicide)	154	7.8
Human immunodeficiency virus (HIV) disease	131	6.6
Assault (homicide)	86	4.3
Chronic liver disease & cirrhosis	51	2.6
Diabetes mellitus	49	2.5
Cerebrovascular diseases	39	2.0
Chronic lower respiratory diseases	23	1.2
All other causes	462	23.3
Total	1981	100

45-64 Years

Cause of Death*	Deaths	
	Number	Percent
Malignant neoplasms	2293	34.2
Diseases of heart	1554	23.2
Accidents (unintentional injuries)	320	4.8
Diabetes mellitus	230	3.4
Chronic lower respiratory diseases	194	2.9
Cerebrovascular diseases	189	2.8
Chronic liver disease & cirrhosis	185	2.8
Human immunodeficiency virus (HIV) disease	179	2.7
Intentional self-harm (suicide)	163	2.4
Septicemia	118	1.8
All other causes	1270	19.0
Total	6695	100

65+ Years

Cause of Death*	Deaths	
	Number	Percent
Diseases of heart	7947	30.8
Malignant neoplasms	6095	23.6
Cerebrovascular diseases	1688	6.5
Chronic lower respiratory diseases	1570	6.1
Diabetes mellitus	807	3.1
Alzheimer's disease	786	3.0
Influenza & pneumonia	648	2.5
Nephritis, nephrotic syndrome & nephrosis	531	2.1
Septicemia	480	1.9
Accidents (unintentional injuries)	464	1.8
All other causes	4814	18.6
Total	25830	100

Note:

\*Cause of death categories were derived using the NCHS list of 50 rankable causes of death as specified by NCHS. For specific codes, see Appendix E.

Source:

Delaware Health Statistics Center

LCODAGE

TABLE F-12  
NUMBER OF DEATHS BY AGE FOR SELECTED LEADING CAUSES OF DEATH  
DELAWARE, 2006  
(ALL RACES, BOTH SEXES)

Cause of Death*	Age of Decedent													
	Total	< 1	1-4	5-9	10-14	15-19	20-24	25-34	35-44	45-54	55-64	65-74	75+	Unk
<b>Diseases of the Heart (I00-I09, I11, I13, I20-I51)</b>	1846	2	0	0	0	0	1	9	39	140	201	283	1170	1
Acute rheumatic fever and chronic rheumatic heart disease (I00-I09)	8	0	0	0	0	0	0	0	0	1	1	1	5	0
Hypertensive heart disease (I11)	81	0	0	0	0	0	0	0	7	11	7	14	42	0
Hypertensive heart and renal disease (I13)	8	0	0	0	0	0	0	0	0	2	2	2	2	0
Ischemic heart disease (I20-I25)	1297	0	0	0	0	0	0	2	17	96	131	210	840	1
All other forms of heart disease (I26-I51)	452	2	0	0	0	0	1	7	15	30	60	56	281	0
<b>Malignant Neoplasms (C00-C97)</b>	1767	0	2	2	1	1	2	7	55	152	325	480	740	0
Malignant neoplasms of lip, oral and pharynx (C00-C14)	23	0	0	0	0	0	0	0	1	4	3	9	6	0
Malignant neoplasms of digestive organs (C15-C26)	402	0	0	0	0	0	0	1	12	33	76	98	182	0
Malignant neoplasms of respiratory and intrathoracic organs (C30-C39)	569	0	0	0	0	0	0	0	6	46	106	187	224	0
Malignant neoplasms of breast (C50)	109	0	0	0	0	0	0	0	13	16	28	18	34	0
Malignant neoplasms of female genital organs, (C51-C58)	81	0	0	0	0	0	0	0	6	12	15	19	29	0
Malignant neoplasms of male genital organs, (C60-C63)	81	0	0	0	0	0	0	0	0	0	9	20	52	0
Malignant neoplasms of urinary tract (C64-C68)	96	0	0	0	0	1	0	0	0	5	16	33	41	0
Malignant neoplasms of meninges, brain, and other parts of central nervous system (C70-C72)	46	0	1	2	0	0	0	3	3	5	13	8	11	0
Malignant neoplasms of lymphoid, hematopoietic, and related tissues (C81-C96)	152	0	1	0	0	0	1	1	6	6	25	33	79	0
All other and unspecified malignant neoplasms (C40-C49, C69, C73-C80, C97)	208	0	0	0	1	0	1	2	8	25	34	55	82	0
<b>Cerebrovascular Diseases (I60-I69)</b>	383	0	1	0	0	0	0	4	5	12	23	68	270	0

TABLE F-12 (continued)  
(2005 - DE, All Races, Both Sexes)

	Age of Decedent													
	Total	< 1	1-4	5-9	10-14	15-19	20-24	25-34	35-44	45-54	55-64	65-74	75+	Unk
<b>Chronic Lower Respiratory Diseases (J40-J47)</b>	344	0	0	0	0	0	0	2	1	7	24	89	221	0
<b>Accidents (unintentional injuries) (V01-X59, Y85-Y86)</b>	322	3	5	2	1	22	13	46	56	40	27	32	75	0
Motor Vehicle Accidents (V02-V04, (V09.0,V09.2,V12-V14, V19.0-V19.2, V19.4-V19.6,V20-V79, V80.3-V80.5, V81.0-V81.1, V82.0-V82.1, V83-V86, V87.0-V87.8, V88.0-V88.8,V89.0,V89.2)	135	1	2	1	1	17	10	22	29	16	9	14	13	0
Nontransport Accidents (W00-X59, Y86)	181	2	3	1	0	5	3	23	25	22	18	17	62	0
<b>Diabetes Mellitus (E10-E14)</b>	190	0	0	0	0	0	0	0	6	17	37	35	95	0
<b>Influenza and pneumonia (J10-J18)</b>	137	0	0	0	0	0	1	2	3	5	4	20	102	0
<b>Alzheimer's Disease (G30)</b>	189	0	0	0	0	0	0	0	0	0	4	9	176	0
<b>Nephritis, Nephrotic Syndrome, and Nephrosis (N00-N07, N17-N19, N25-N27)</b>	152	2	0	0	0	0	1	0	3	13	13	23	97	0
<b>Septicemia (A40-A41)</b>	116	0	0	0	1	1	0	1	5	13	16	19	60	0
<b>Intentional self-harm (suicide) (X60-X84, Y87.0)</b>	88	0	0	0	0	8	6	12	19	17	14	5	7	0
<b>Chronic liver disease and Cirrhosis (K70, K73-K74)</b>	73	0	0	0	0	0	0	0	12	14	17	17	13	0
<b>Essential (primary) hypertension and hypertensive renal disease (I10, I12)</b>	43	0	0	0	0	0	0	0	1	5	5	5	27	0
<b>Aortic aneurysm and dissection (I71)</b>	28	0	0	0	0	0	0	0	1	1	1	7	18	0
<b>Assault (homicide) (X85-Y09, Y87.1)</b>	48	0	0	0	1	5	12	14	13	1	0	0	2	0
<b>Human immunodeficiency virus (HIV) (B20-B24)</b>	53	0	0	0	0	0	0	3	13	26	10	1	0	0
<b>Certain conditions originating in the perinatal period (P00-P96)</b>	56	56	0	0	0	0	0	0	0	0	0	0	0	0
<b>Congenital malformations, deformations, and chromosomal abnormalities (Q00-Q99)</b>	29	14	0	0	0	1	2	0	3	2	1	4	2	0
<b>All Other Causes</b>	1280	22	1	2	1	4	12	24	68	97	126	135	788	0
<b>TOTAL</b>	7144	99	9	6	5	42	50	124	303	562	848	1232	3863	1

LCDAGEDE

**Notes:**

\*ICD Codes, Tenth Revision.

**Source:**

Delaware Health Statistics Center



TABLE F-13  
NUMBER OF DEATHS BY AGE FOR SELECTED LEADING CAUSES OF DEATH  
KENT, 2006  
**(ALL RACES, BOTH SEXES)**

Cause of Death*	Age of Decedent													
	Total	< 1	1-4	5-9	10-14	15-19	20-24	25-34	35-44	45-54	55-64	65-74	75+	Unk
<b>Diseases of the Heart (I00-I09, I11, I13, I20-I51)</b>	367	1	0	0	0	0	1	2	13	32	42	65	211	0
Acute rheumatic fever and chronic rheumatic heart disease (I00-I09)	2	0	0	0	0	0	0	0	0	0	1	0	1	0
Hypertensive heart disease (I11)	14	0	0	0	0	0	0	0	3	1	2	2	6	0
Hypertensive heart and renal disease (I13)	1	0	0	0	0	0	0	0	0	0	0	0	1	0
Ischemic heart disease (I20-I25)	234	0	0	0	0	0	0	1	10	22	20	45	136	0
All other forms of heart disease (I26-I51)	116	1	0	0	0	0	1	1	0	9	19	18	67	0
<b>Malignant Neoplasms (C00-C97)</b>	287	0	0	0	0	0	1	1	9	20	47	87	122	0
Malignant neoplasms of lip, oral and pharynx (C00-C14)	1	0	0	0	0	0	0	0	0	0	0	0	1	0
Malignant neoplasms of digestive organs (C15-C26)	63	0	0	0	0	0	0	0	1	4	13	14	31	0
Malignant neoplasms of respiratory and intrathoracic organs (C30-C39)	87	0	0	0	0	0	0	0	2	3	13	36	33	0
Malignant neoplasms of breast (C50)	21	0	0	0	0	0	0	0	3	4	1	8	5	0
Malignant neoplasms of female genital organs, (C51-C58)	15	0	0	0	0	0	0	0	0	4	3	2	6	0
Malignant neoplasms of male genital organs, (C60-C63)	13	0	0	0	0	0	0	0	0	0	1	7	5	0
Malignant neoplasms of urinary tract (C64-C68)	16	0	0	0	0	0	0	0	0	0	3	4	9	0
Malignant neoplasms of meninges, brain, and other parts of central nervous system (C70-C72)	2	0	0	0	0	0	0	0	0	0	1	0	1	0
Malignant neoplasms of lymphoid, hematopoietic, and related tissues (C81-C96)	29	0	0	0	0	0	1	0	1	1	3	5	18	0
All other and unspecified malignant neoplasms (C40-C49, C69, C73-C80,C97)	40	0	0	0	0	0	0	1	2	4	9	11	13	0
<b>Cerebrovascular Diseases (I60-I69)</b>	59	0	0	0	0	0	0	1	4	1	1	9	43	0

TABLE F-13 (continued)  
(2006 - Kent, All Races, Both Sexes)

	Age of Decedent													Unk
	Total	< 1	1-4	5-9	10-14	15-19	20-24	25-34	35-44	45-54	55-64	65-74	75+	
<b>Chronic Lower Respiratory Diseases (J40-J47)</b>	63	0	0	0	0	0	0	1	0	2	3	17	40	0
<b>Accidents (unintentional injuries) (V01-X59, Y85-Y86)</b>	29	0	0	0	0	0	0	0	1	3	4	7	14	0
Motor Vehicle Accidents (V02-V04, (V09.0,V09.2,V12-V14, V19.0-V19.2, V19.4-V19.6,V20-V79, V80.3-V80.5, V81.0-V81.1, V82.0-V82.1, V83-V86, V87.0-V87.8, V88.0-V88.8,V89.0,V89.2)	36	0	1	1	0	2	1	10	7	5	2	5	2	0
Nontransport Accidents (W00-X59, Y86)	28	1	0	1	0	0	0	4	1	5	3	6	7	0
<b>Diabetes Mellitus (E10-E14)</b>	38	0	0	0	0	0	0	0	2	7	9	3	17	0
<b>Influenza and pneumonia (J10-J18)</b>	28	0	0	0	0	0	0	1	0	1	3	2	21	0
<b>Alzheimer's Disease (G30)</b>	19	0	0	0	0	0	0	0	0	0	0	0	19	0
<b>Nephritis, Nephrotic Syndrome, and Nephrosis (N00-N07, N17-N19, N25-N27)</b>	22	0	0	0	0	0	0	0	3	0	3	4	12	0
<b>Septicemia (A40-A41)</b>	29	0	0	0	0	0	0	0	1	3	4	7	14	0
<b>Intentional self-harm (suicide) (X60-X84, Y87.0)</b>	19	0	0	0	0	3	0	3	3	3	5	2	0	0
<b>Chronic liver disease and Cirrhosis (K70, K73-K74)</b>	11	0	0	0	0	0	0	0	5	4	0	1	1	0
<b>Essential (primary) hypertension and hypertensive renal disease (I10, I12)</b>	11	0	0	0	0	0	0	0	0	2	1	1	7	0
<b>Aortic aneurysm and dissection (I71)</b>	4	0	0	0	0	0	0	0	0	0	0	1	3	0
<b>Assault (homicide) (X85-Y09, Y87.1)</b>	7	0	0	0	0	1	1	1	4	0	0	0	0	0
<b>Human immunodeficiency virus (HIV) (B20-B24)</b>	11	0	0	0	0	0	0	2	1	7	1	0	0	0
<b>Certain conditions originating in the perinatal period (P00-P96)</b>	4	4	0	0	0	0	0	0	0	0	0	0	0	0
<b>Congenital malformations, deformations, and chromosomal abnormalities (Q00-Q99)</b>	8	3	0	0	0	0	2	0	1	0	0	1	1	0
<b>All Other Causes</b>	203	5	1	3	0	4	4	18	13	18	22	33	82	0
<b>TOTAL</b>	1219	13	1	3	0	8	9	30	60	103	145	240	607	0

LCDAGEKT

**Note:**  
\*ICD Codes, Tenth Revision.

**Source:**  
Delaware Health Statistics Center

TABLE F-14  
NUMBER OF DEATHS BY AGE FOR SELECTED LEADING CAUSES OF DEATH  
NEW CASTLE, 2006  
**(ALL RACES, BOTH SEXES)**

Cause of Death*	Age of Decedent														
	Total	< 1	1-4	5-9	10-14	15-19	20-24	25-34	35-44	45-54	55-64	65-74	75+	Unk	
<b>Diseases of the Heart (I00-I09, I11, I13, I20-I51)</b>	972	1	0	0	0	0	0	7	20	81	102	135	626	0	
Acute rheumatic fever and chronic rheumatic heart disease (I00-I09)	2	0	0	0	0	0	0	0	0	0	0	0	1	1	0
Hypertensive heart disease (I11)	38	0	0	0	0	0	0	0	3	8	3	6	18	0	
Hypertensive heart and renal disease (I13)	6	0	0	0	0	0	0	0	0	2	2	1	1	0	
Ischemic heart disease (I20-I25)	686	0	0	0	0	0	0	1	4	53	70	104	454	0	
All other forms of heart disease (I26-I51)	240	1	0	0	0	0	0	6	13	18	27	23	152	0	
<b>Malignant Neoplasms (C00-C97)</b>	976	0	2	2	1	0	1	4	29	92	199	249	397	0	
Malignant neoplasms of lip, oral and pharynx (C00-C14)	11	0	0	0	0	0	0	0	0	2	3	3	3	0	
Malignant neoplasms of digestive organs (C15-C26)	222	0	0	0	0	0	0	0	8	23	44	59	88	0	
Malignant neoplasms of respiratory and intrathoracic organs (C30-C39)	311	0	0	0	0	0	0	0	3	26	65	90	127	0	
Malignant neoplasms of breast (C50)	56	0	0	0	0	0	0	0	4	9	17	6	20	0	
Malignant neoplasms of female genital organs, (C51-C58)	49	0	0	0	0	0	0	0	5	7	10	12	15	0	
Malignant neoplasms of male genital organs, (C60-C63)	47	0	0	0	0	0	0	0	0	0	5	8	34	0	
Malignant neoplasms of urinary tract (C64-C68)	52	0	0	0	0	0	0	0	0	3	12	18	19	0	
Malignant neoplasms of meninges, brain, and other parts of central nervous system (C70-C72)	29	0	1	2	0	0	0	2	2	3	7	6	6	0	
Malignant neoplasms of lymphoid, hematopoietic, and related tissues (C81-C96)	84	0	1	0	0	0	0	1	2	4	17	16	43	0	
All other and unspecified malignant neoplasms (C40-C49, C69, C73-C80,C97)	115	0	0	0	1	0	1	1	5	15	19	31	42	0	
<b>Cerebrovascular Diseases (I60-I69)</b>	240	0	1	0	0	0	0	3	0	9	15	40	172	0	

TABLE F-14 (continued)  
(2006 - New Castle, All Races, Both Sexes)

	Age of Decedent													
	Total	< 1	1-4	5-9	10-14	15-19	20-24	25-34	35-44	45-54	55-64	65-74	75+	Unk
<b>Chronic Lower Respiratory Diseases (J40-J47)</b>	194	0	0	0	0	0	0	1	1	2	12	43	135	0
<b>Accidents (unintentional injuries) (V01-X59, Y85-Y86)</b>	180	2	2	0	1	12	7	24	31	22	16	13	50	0
Motor Vehicle Accidents (V02-V04, (V09.0,V09.2,V12-V14, V19.0-V19.2, V19.4-V19.6,V20-V79, V80.3-V80.5, V81.0-V81.1, V82.0-V82.1, V83-V86, V87.0-V87.8, V88.0-V88.8,V89.0,V89.2)	57	1	1	0	1	8	5	6	12	6	4	5	8	0
Nontransport Accidents (W00-X59, Y86)	120	1	1	0	0	4	2	17	18	15	12	8	42	0
<b>Diabetes Mellitus (E10-E14)</b>	104	0	0	0	0	0	0	0	3	9	21	18	53	0
<b>Influenza and pneumonia (J10-J18)</b>	70	0	0	0	0	0	1	1	2	4	0	7	55	0
<b>Alzheimer's Disease (G30)</b>	111	0	0	0	0	0	0	0	0	0	2	8	101	0
<b>Nephritis, Nephrotic Syndrome, and Nephrosis (N00-N07, N17-N19, N25-N27)</b>	89	1	0	0	0	0	1	0	0	12	8	13	54	0
<b>Septicemia (A40-A41)</b>	62	0	0	0	1	0	0	1	3	9	8	6	34	0
<b>Intentional self-harm (suicide) (X60-X84, Y87.0)</b>	47	0	0	0	0	4	4	7	11	9	7	2	3	0
<b>Chronic liver disease and Cirrhosis (K70, K73-K74)</b>	44	0	0	0	0	0	0	0	7	8	9	10	10	0
<b>Essential (primary) hypertension and hypertensive renal disease (I10, I12)</b>	23	0	0	0	0	0	0	0	1	3	1	2	16	0
<b>Aortic aneurysm and dissection (I71)</b>	13	0	0	0	0	0	0	0	1	1	1	4	6	0
<b>Assault (homicide) (X85-Y09, Y87.1)</b>	39	0	0	0	1	4	11	13	7	1	0	0	2	0
<b>Human immunodeficiency virus (HIV) (B20-B24)</b>	34	0	0	0	0	0	0	0	9	16	8	1	0	0
<b>Certain conditions originating in the perinatal period (P00-P96)</b>	41	41	0	0	0	0	0	0	0	0	0	0	0	0
<b>Congenital malformations, deformations, and chromosomal abnormalities (Q00-Q99)</b>	14	9	0	0	0	0	0	0	1	1	0	2	1	0
<b>All Other Causes</b>	786	14	0	1	1	1	7	18	47	64	64	64	505	0
<b>TOTAL</b>	4039	68	5	3	5	21	32	79	173	343	473	617	2220	0

**Notes:**

\*ICD Codes, Tenth Revision.

LCDAGENC

**Source:**

Delaware Health Statistics Center

TABLE F-15  
NUMBER OF DEATHS BY AGE FOR SELECTED LEADING CAUSES OF DEATH  
CITY OF WILMINGTON, 2006  
**(ALL RACES, BOTH SEXES)**

Cause of Death*	Age of Decedent													
	Total	< 1	1-4	5-9	10-14	15-19	20-24	25-34	35-44	45-54	55-64	65-74	75+	Unk
<b>Diseases of the Heart (I00-I09, I11, I13, I20-I51)</b>	174	0	0	0	0	0	0	3	5	11	23	34	98	0
Acute rheumatic fever and chronic rheumatic heart disease (I00-I09)	0	0	0	0	0	0	0	0	0	0	0	0	0	0
Hypertensive heart disease (I11)	11	0	0	0	0	0	0	0	0	1	1	4	5	0
Hypertensive heart and renal disease (I13)	3	0	0	0	0	0	0	0	0	1	0	1	1	0
Ischemic heart disease (I20-I25)	114	0	0	0	0	0	0	1	2	6	19	19	67	0
All other forms of heart disease (I26-I51)	46	0	0	0	0	0	0	2	3	3	3	10	25	0
<b>Malignant Neoplasms (C00-C97)</b>	155	0	1	0	1	0	0	0	3	19	38	38	55	0
Malignant neoplasms of lip, oral and pharynx (C00-C14)	3	0	0	0	0	0	0	0	0	1	0	1	1	0
Malignant neoplasms of digestive organs (C15-C26)	43	0	0	0	0	0	0	0	2	3	9	15	14	0
Malignant neoplasms of respiratory and intrathoracic organs (C30-C39)	44	0	0	0	0	0	0	0	0	5	9	14	16	0
Malignant neoplasms of breast (C50)	10	0	0	0	0	0	0	0	0	2	4	0	4	0
Malignant neoplasms of female genital organs, (C51-C58)	7	0	0	0	0	0	0	0	1	0	4	1	1	0
Malignant neoplasms of male genital organs, (C60-C63)	3	0	0	0	0	0	0	0	0	0	0	1	2	0
Malignant neoplasms of urinary tract (C64-C68)	7	0	0	0	0	0	0	0	0	1	2	2	2	0
Malignant neoplasms of meninges, brain, and other parts of central nervous system (C70-C72)	5	0	0	0	0	0	0	0	0	0	2	1	2	0
Malignant neoplasms of lymphoid, hematopoietic, and related tissues (C81-C96)	10	0	1	0	0	0	0	0	0	2	1	1	5	0
All other and unspecified malignant neoplasms (C40-C49, C69, C73-C80,C97)	23	0	0	0	1	0	0	0	0	5	7	2	8	0
<b>Cerebrovascular Diseases (I60-I69)</b>	52	0	0	0	0	0	0	1	0	3	5	10	33	0

TABLE F-15 (continued)  
 (2006 - City of Wilmington, All Races, Both Sexes)

	Age of Decedent													
	Total	< 1	1-4	5-9	10-14	15-19	20-24	25-34	35-44	45-54	55-64	65-74	75+	Unk
<b>Chronic Lower Respiratory Diseases (J40-J47)</b>	35	0	0	0	0	0	0	1	0	1	3	10	20	0
<b>Accidents (unintentional injuries) (V01-X59, Y85-Y86)</b>	31	0	0	0	0	0	2	5	5	8	2	1	8	0
Motor Vehicle Accidents (V02-V04, (V09.0,V09.2,V12-V14, V19.0-V19.2, V19.4-V19.6,V20-V79, V80.3-V80.5, V81.0-V81.1, V82.0-V82.1, V83-V86, V87.0-V87.8, V88.0-V88.8,V89.0,V89.2)	6	0	0	0	0	0	1	1	1	1	0	0	2	0
Nontransport Accidents (W00-X59, Y86)	25	0	0	0	0	0	1	4	4	7	2	1	6	0
<b>Diabetes Mellitus (E10-E14)</b>	14	0	0	0	0	0	0	0	1	1	4	3	5	0
<b>Influenza and pneumonia (J10-J18)</b>	12	0	0	0	0	0	1	1	1	1	0	0	8	0
<b>Alzheimer's Disease (G30)</b>	6	0	0	0	0	0	0	0	0	0	0	0	6	0
<b>Nephritis, Nephrotic Syndrome, and Nephrosis (N00-N07, N17-N19, N25-N27)</b>	16	0	0	0	0	0	0	0	0	2	2	2	10	0
<b>Septicemia (A40-A41)</b>	14	0	0	0	1	0	0	1	1	3	2	2	4	0
<b>Intentional self-harm (suicide) (X60-X84, Y87.0)</b>	6	0	0	0	0	1	0	0	3	2	0	0	0	0
<b>Chronic liver disease and Cirrhosis (K70, K73-K74)</b>	10	0	0	0	0	0	0	0	1	3	3	2	1	0
<b>Essential (primary) hypertension and hypertensive renal disease (I10, I12)</b>	7	0	0	0	0	0	0	0	0	3	0	0	4	0
<b>Aortic aneurysm and dissection (I71)</b>	1	0	0	0	0	0	0	0	0	0	0	0	1	0
<b>Assault (homicide) (X85-Y09, Y87.1)</b>	18	0	0	0	0	4	3	7	2	1	0	0	1	0
<b>Human immunodeficiency virus (HIV) (B20-B24)</b>	19	0	0	0	0	0	0	0	3	13	2	1	0	0
<b>Certain conditions originating in the perinatal period (P00-P96)</b>	11	11	0	0	0	0	0	0	0	0	0	0	0	0
<b>Congenital malformations, deformations, and chromosomal abnormalities (Q00-Q99)</b>	2	2	0	0	0	0	0	0	0	0	0	0	0	0
<b>All Other Causes</b>	145	3	0	0	0	0	1	1	10	18	17	15	80	0
<b>TOTAL</b>	728	16	1	0	2	5	7	20	35	89	101	118	334	0

Notes:

\*ICD Codes, Tenth Revision.

LCDAGEWLM

Source:

Delaware Health Statistics Center

TABLE F-16  
NUMBER OF DEATHS BY AGE FOR SELECTED LEADING CAUSES OF DEATH  
SUSSEX, 2006  
(ALL RACES, BOTH SEXES)

Cause of Death*	Age of Decedent													Unk
	Total	< 1	1-4	5-9	10-14	15-19	20-24	25-34	35-44	45-54	55-64	65-74	75+	
<b>Diseases of the Heart (I00-I09, I11, I13, I20-I51)</b>	507	0	0	0	0	0	0	0	6	27	57	83	333	1
Acute rheumatic fever and chronic rheumatic heart disease (I00-I09)	4	0	0	0	0	0	0	0	0	1	0	0	3	0
Hypertensive heart disease (I11)	29	0	0	0	0	0	0	0	1	2	2	6	18	0
Hypertensive heart and renal disease (I13)	1	0	0	0	0	0	0	0	0	0	0	1	0	0
Ischemic heart disease (I20-I25)	377	0	0	0	0	0	0	0	3	21	41	61	250	1
All other forms of heart disease (I26-I51)	96	0	0	0	0	0	0	0	2	3	14	15	62	0
<b>Malignant Neoplasms (C00-C97)</b>	504	0	0	0	0	1	0	2	17	40	79	144	221	0
Malignant neoplasms of lip, oral and pharynx (C00-C14)	11	0	0	0	0	0	0	0	1	2	0	6	2	0
Malignant neoplasms of digestive organs (C15-C26)	117	0	0	0	0	0	0	1	3	6	19	25	63	0
Malignant neoplasms of respiratory and intrathoracic organs (C30-C39)	171	0	0	0	0	0	0	0	1	17	28	61	64	0
Malignant neoplasms of breast (C50)	32	0	0	0	0	0	0	0	6	3	10	4	9	0
Malignant neoplasms of female genital organs, (C51-C58)	17	0	0	0	0	0	0	0	1	1	2	5	8	0
Malignant neoplasms of male genital organs, (C60-C63)	21	0	0	0	0	0	0	0	0	0	3	5	13	0
Malignant neoplasms of urinary tract (C64-C68)	28	0	0	0	0	1	0	0	0	2	1	11	13	0
Malignant neoplasms of meninges, brain, and other parts of central nervous system (C70-C72)	15	0	0	0	0	0	0	1	1	2	5	2	4	0
Malignant neoplasms of lymphoid, hematopoietic, and related tissues (C81-C96)	39	0	0	0	0	0	0	0	3	1	5	12	18	0
All other and unspecified malignant neoplasms (C40-C49, C69, C73-C80,C97)	53	0	0	0	0	0	0	0	1	6	6	13	27	0
<b>Cerebrovascular Diseases (I60-I69)</b>	84	0	0	0	0	0	0	0	1	2	7	19	55	0

TABLE F-16 (continued)  
(2006 - Sussex, All Races, Both Sexes)

	Age of Decedent													
	Total	< 1	1-4	5-9	10-14	15-19	20-24	25-34	35-44	45-54	55-64	65-74	75+	Unk
<b>Chronic Lower Respiratory Diseases (J40-J47)</b>	87	0	0	0	0	0	0	0	0	3	9	29	46	0
<b>Accidents (unintentional injuries) (V01-X59, Y85-Y86)</b>	77	0	2	0	0	8	5	8	17	7	6	8	16	0
Motor Vehicle Accidents (V02-V04, (V09.0,V09.2,V12-V14, V19.0-V19.2, V19.4-V19.6,V20-V79, V80.3-V80.5, V81.0-V81.1, V82.0-V82.1, V83-V86, V87.0-V87.8, V88.0-V88.8,V89.0,V89.2)	42	0	0	0	0	7	4	6	10	5	3	4	3	0
Nontransport Accidents (W00-X59, Y86)	33	0	2	0	0	1	1	2	6	2	3	3	13	0
<b>Diabetes Mellitus (E10-E14)</b>	48	0	0	0	0	0	0	0	1	1	7	14	25	0
<b>Influenza and pneumonia (J10-J18)</b>	39	0	0	0	0	0	0	0	1	0	1	11	26	0
<b>Alzheimer's Disease (G30)</b>	59	0	0	0	0	0	0	0	0	0	2	1	56	0
<b>Nephritis, Nephrotic Syndrome, and Nephrosis (N00-N07, N17-N19, N25-N27)</b>	41	1	0	0	0	0	0	0	0	1	2	6	31	0
<b>Septicemia (A40-A41)</b>	25	0	0	0	0	1	0	0	1	1	4	6	12	0
<b>Intentional self-harm (suicide) (X60-X84, Y87.0)</b>	22	0	0	0	0	1	2	2	5	5	2	1	4	0
<b>Chronic liver disease and Cirrhosis (K70, K73-K74)</b>	18	0	0	0	0	0	0	0	0	2	8	6	2	0
<b>Essential (primary) hypertension and hypertensive renal disease (I10, I12)</b>	9	0	0	0	0	0	0	0	0	0	3	2	4	0
<b>Aortic aneurysm and dissection (I71)</b>	11	0	0	0	0	0	0	0	0	0	0	2	9	0
<b>Assault (homicide) (X85-Y09, Y87.1)</b>	2	0	0	0	0	0	0	0	2	0	0	0	0	0
<b>Human immunodeficiency virus (HIV) (B20-B24)</b>	8	0	0	0	0	0	0	1	3	3	1	0	0	0
<b>Certain conditions originating in the perinatal period (P00-P96)</b>	11	11	0	0	0	0	0	0	0	0	0	0	0	0
<b>Congenital malformations, deformations, and chromosomal abnormalities (Q00-Q99)</b>	7	2	0	0	0	1	0	0	1	1	1	1	0	0
<b>All Other Causes</b>	327	4	1	0	0	1	2	2	15	23	41	42	196	0
<b>TOTAL</b>	1886	18	3	0	0	13	9	15	70	116	230	375	1036	1

Note:

\*ICD Codes, Tenth Revision.

LCDAGESX

Source:

Delaware Health Statistics Center



TABLE F-17  
NUMBER OF DEATHS BY AGE FOR SELECTED LEADING CAUSES OF DEATH  
DELAWARE, 2006  
**(ALL RACES, MALES)**

Cause of Death*	Age of Decedent													
	Total	< 1	1-4	5-9	10-14	15-19	20-24	25-34	35-44	45-54	55-64	65-74	75+	Unk
<b>Diseases of the Heart (I00-I09, I11, I13, I20-I51)</b>	927	1	0	0	0	0	1	4	30	93	135	175	487	1
Acute rheumatic fever and chronic rheumatic heart disease (I00-I09)	3	0	0	0	0	0	0	0	0	1	1	0	1	0
Hypertensive heart disease (I11)	41	0	0	0	0	0	0	0	5	5	5	8	18	0
Hypertensive heart and renal disease (I13)	4	0	0	0	0	0	0	0	0	1	2	1	0	0
Ischemic heart disease (I20-I25)	675	0	0	0	0	0	0	1	13	71	93	136	360	1
All other forms of heart disease (I26-I51)	204	1	0	0	0	0	1	3	12	15	34	30	108	0
<b>Malignant Neoplasms (C00-C97)</b>	931	0	0	2	0	0	2	2	23	72	167	274	389	0
Malignant neoplasms of lip, oral and pharynx (C00-C14)	18	0	0	0	0	0	0	0	1	4	2	7	4	0
Malignant neoplasms of digestive organs (C15-C26)	238	0	0	0	0	0	0	0	10	21	59	63	85	0
Malignant neoplasms of respiratory and intrathoracic organs (C30-C39)	295	0	0	0	0	0	0	0	3	22	50	102	118	0
Malignant neoplasms of breast (C50)	1	0	0	0	0	0	0	0	0	0	0	0	1	0
Malignant neoplasms of male genital organs, (C60-C63)	81	0	0	0	0	0	0	0	0	0	9	20	52	0
Malignant neoplasms of urinary tract (C64-C68)	67	0	0	0	0	0	0	0	0	4	12	25	26	0
Malignant neoplasms of meninges, brain, and other parts of central nervous system (C70-C72)	30	0	0	2	0	0	0	1	2	4	6	6	9	0
Malignant neoplasms of lymphoid, hematopoietic, and related tissues (C81-C96)	87	0	0	0	0	0	1	1	1	3	14	20	47	0
All other and unspecified malignant neoplasms (C40-C49, C69, C73-C80,C97)	114	0	0	0	0	0	1	0	6	14	15	31	47	0
<b>Cerebrovascular Diseases (I60-I69)</b>	136	0	1	0	0	0	0	1	3	6	11	35	79	0

TABLE F-17 (continued)  
(2006 - All Races, Male)

	Age of Decedent													
	Total	< 1	1-4	5-9	10-14	15-19	20-24	25-34	35-44	45-54	55-64	65-74	75+	Unk
<b>Chronic Lower Respiratory Diseases (J40-J47)</b>	158	0	0	0	0	0	0	0	1	3	12	46	96	0
<b>Accidents (unintentional injuries) (V01-X59, Y85-Y86)</b>	202	1	4	2	0	13	11	34	37	28	18	19	35	0
Motor Vehicle Accidents (V02-V04, (V09.0,V09.2,V12-V14, V19.0-V19.2, V19.4-V19.6,V20-V79, V80.3-V80.5, V81.0-V81.1, V82.0-V82.1, V83-V86, V87.0-V87.8, V88.0-V88.8,V89.0,V89.2)	90	1	2	1	0	9	8	15	19	13	7	8	7	0
Nontransport Accidents (W00-X59, Y86)	108	0	2	1	0	4	3	18	17	14	11	10	28	0
<b>Diabetes Mellitus (E10-E14)</b>	91	0	0	0	0	0	0	0	4	6	21	16	44	0
<b>Influenza and pneumonia (J10-J18)</b>	63	0	0	0	0	0	1	2	2	4	3	8	43	0
<b>Alzheimer's Disease (G30)</b>	65	0	0	0	0	0	0	0	0	0	4	5	56	0
<b>Nephritis, Nephrotic Syndrome, and Nephrosis (N00-N07, N17-N19, N25-N27)</b>	84	2	0	0	0	0	0	0	3	9	10	18	42	0
<b>Septicemia (A40-A41)</b>	50	0	0	0	1	0	0	0	4	8	4	11	22	0
<b>Intentional self-harm (suicide) (X60-X84, Y87.0)</b>	72	0	0	0	0	7	5	10	16	15	9	4	6	0
<b>Chronic liver disease and Cirrhosis (K70, K73-K74)</b>	53	0	0	0	0	0	0	0	9	12	13	11	8	0
<b>Essential (primary) hypertension and hypertensive renal disease (I10, I12)</b>	18	0	0	0	0	0	0	0	0	4	3	4	7	0
<b>Aortic aneurysm and dissection (I71)</b>	20	0	0	0	0	0	0	0	1	1	1	6	11	0
<b>Assault (homicide) (X85-Y09, Y87.1)</b>	40	0	0	0	1	5	11	12	9	1	0	0	1	0
<b>Human immunodeficiency virus (HIV) (B20-B24)</b>	33	0	0	0	0	0	0	2	8	13	9	1	0	0
<b>Certain conditions originating in the perinatal period (P00-P96)</b>	31	31	0	0	0	0	0	0	0	0	0	0	0	0
<b>Congenital malformations, deformations, and chromosomal abnormalities (Q00-Q99)</b>	11	6	0	0	0	0	1	0	2	1	0	1	0	0
<b>All Other Causes</b>	569	12	0	1	1	3	7	16	42	49	80	71	287	0
<b>TOTAL</b>	3554	53	5	5	3	28	39	83	194	325	500	705	1613	1

LCDAGMAL

**Notes:**

\*ICD Codes, Tenth Revision.

**Source:**

Delaware Health Statistics Center

TABLE F-18  
NUMBER OF DEATHS BY AGE FOR SELECTED LEADING CAUSES OF DEATH  
DELAWARE, 2006  
**(ALL RACES, FEMALES)**

Cause of Death*	Age of Decedent													
	Total	< 1	1-4	5-9	10-14	15-19	20-24	25-34	35-44	45-54	55-64	65-74	75+	Unk
<b>Diseases of the Heart (I00-I09, I11, I13, I20-I51)</b>	919	1	0	0	0	0	0	5	9	47	66	108	683	0
Acute rheumatic fever and chronic rheumatic heart disease (I00-I09)	5	0	0	0	0	0	0	0	0	0	0	1	4	0
Hypertensive heart disease (I11)	40	0	0	0	0	0	0	0	2	6	2	6	24	0
Hypertensive heart and renal disease (I13)	4	0	0	0	0	0	0	0	0	1	0	1	2	0
Ischemic heart disease (I20-I25)	622	0	0	0	0	0	0	1	4	25	38	74	480	0
All other forms of heart disease (I26-I51)	248	1	0	0	0	0	0	4	3	15	26	26	173	0
<b>Malignant Neoplasms (C00-C97)</b>	836	0	2	0	1	1	0	5	32	80	158	206	351	0
Malignant neoplasms of lip, oral and pharynx (C00-C14)	5	0	0	0	0	0	0	0	0	0	1	2	2	0
Malignant neoplasms of digestive organs (C15-C26)	164	0	0	0	0	0	0	1	2	12	17	35	97	0
Malignant neoplasms of respiratory and intrathoracic organs (C30-C39)	274	0	0	0	0	0	0	0	3	24	56	85	106	0
Malignant neoplasms of breast (C50)	108	0	0	0	0	0	0	0	13	16	28	18	33	0
Malignant neoplasms of female genital organs, (C51-C58)	81	0	0	0	0	0	0	0	6	12	15	19	29	0
Malignant neoplasms of urinary tract (C64-C68)	29	0	0	0	0	1	0	0	0	1	4	8	15	0
Malignant neoplasms of meninges, brain, and other parts of central nervous system (C70-C72)	16	0	1	0	0	0	0	2	1	1	7	2	2	0
Malignant neoplasms of lymphoid, hematopoietic, and related tissues (C81-C96)	65	0	1	0	0	0	0	0	5	3	11	13	32	0
All other and unspecified malignant neoplasms (C40-C49, C69, C73-C80,C97)	94	0	0	0	1	0	0	2	2	11	19	24	35	0
<b>Cerebrovascular Diseases (I60-I69)</b>	247	0	0	0	0	0	0	3	2	6	12	33	191	0

TABLE F-18 (continued)  
(2006 - All Races, Female)

	Age of Decedent													
	Total	< 1	1-4	5-9	10-14	15-19	20-24	25-34	35-44	45-54	55-64	65-74	75+	Unk
<b>Chronic Lower Respiratory Diseases (J40-J47)</b>	186	0	0	0	0	0	0	2	0	4	12	43	125	0
<b>Accidents (unintentional injuries) (V01-X59, Y85-Y86)</b>	120	2	1	0	1	9	2	12	19	12	9	13	40	0
Motor Vehicle Accidents (V02-V04, (V09.0,V09.2,V12-V14, V19.0-V19.2, V19.4-V19.6,V20-V79, V80.3-V80.5, V81.0-V81.1, V82.0-V82.1, V83-V86, V87.0-V87.8, V88.0-V88.8,V89.0,V89.2)	45	0	0	0	1	8	2	7	10	3	2	6	6	0
Nontransport Accidents (W00-X59, Y86)	73	2	1	0	0	1	0	5	8	8	7	7	34	0
<b>Diabetes Mellitus (E10-E14)</b>	99	0	0	0	0	0	0	0	2	11	16	19	51	0
<b>Influenza and pneumonia (J10-J18)</b>	74	0	0	0	0	0	0	0	1	1	1	12	59	0
<b>Alzheimer's Disease (G30)</b>	124	0	0	0	0	0	0	0	0	0	0	4	120	0
<b>Nephritis, Nephrotic Syndrome, and Nephrosis (N00-N07, N17-N19, N25-N27)</b>	68	0	0	0	0	0	1	0	0	4	3	5	55	0
<b>Septicemia (A40-A41)</b>	66	0	0	0	0	1	0	1	1	5	12	8	38	0
<b>Intentional self-harm (suicide) (X60-X84, Y87.0)</b>	16	0	0	0	0	1	1	2	3	2	5	1	1	0
<b>Chronic liver disease and Cirrhosis (K70, K73-K74)</b>	20	0	0	0	0	0	0	0	3	2	4	6	5	0
<b>Essential (primary) hypertension and hypertensive renal disease (I10, I12)</b>	25	0	0	0	0	0	0	0	1	1	2	1	20	0
<b>Aortic aneurysm and dissection (I71)</b>	8	0	0	0	0	0	0	0	0	0	0	1	7	0
<b>Assault (homicide) (X85-Y09, Y87.1)</b>	8	0	0	0	0	0	1	2	4	0	0	0	1	0
<b>Human immunodeficiency virus (HIV) (B20-B24)</b>	20	0	0	0	0	0	0	1	5	13	1	0	0	0
<b>Certain conditions originating in the perinatal period (P00-P96)</b>	25	25	0	0	0	0	0	0	0	0	0	0	0	0
<b>Congenital malformations, deformations, and chromosomal abnormalities (Q00-Q99)</b>	18	8	0	0	0	1	1	0	1	1	1	3	2	0
<b>All Other Causes</b>	711	10	1	1	0	1	5	8	26	48	46	64	501	0
<b>TOTAL</b>	3590	46	4	1	2	14	11	41	109	237	348	527	2250	0

**Note:**

\*ICD Codes, Tenth Revision.

**Source:**

Delaware Health Statistics Center

LCDAGFEM

TABLE F-19  
NUMBER OF DEATHS BY AGE FOR SELECTED LEADING CAUSES OF DEATH  
DELAWARE, 2006  
(WHITE, BOTH SEXES)

Cause of Death*	Age of Decedent													
	Total	< 1	1-4	5-9	10-14	15-19	20-24	25-34	35-44	45-54	55-64	65-74	75+	Unk
<b>Diseases of the Heart (I00-I09, I11, I13, I20-I51)</b>	1547	0	0	0	0	0	1	4	26	102	160	214	1039	1
Acute rheumatic fever and chronic rheumatic heart disease (I00-I09)	6	0	0	0	0	0	0	0	0	1	1	0	4	0
Hypertensive heart disease (I11)	60	0	0	0	0	0	0	0	5	9	4	9	33	0
Hypertensive heart and renal disease (I13)	2	0	0	0	0	0	0	0	0	0	1	0	1	0
Ischemic heart disease (I20-I25)	1103	0	0	0	0	0	0	0	15	71	108	164	744	1
All other forms of heart disease (I26-I51)	376	0	0	0	0	0	1	4	6	21	46	41	257	0
<b>Malignant Neoplasms (C00-C97)</b>	1463	0	1	2	0	0	2	6	39	105	250	394	664	0
Malignant neoplasms of lip, oral and pharynx (C00-C14)	19	0	0	0	0	0	0	0	1	2	3	7	6	0
Malignant neoplasms of digestive organs (C15-C26)	329	0	0	0	0	0	0	1	9	18	60	76	165	0
Malignant neoplasms of respiratory and intrathoracic organs (C30-C39)	478	0	0	0	0	0	0	0	5	34	87	154	198	0
Malignant neoplasms of breast (C50)	88	0	0	0	0	0	0	0	9	13	20	15	31	0
Malignant neoplasms of female genital organs, (C51-C58)	60	0	0	0	0	0	0	0	3	11	6	14	26	0
Malignant neoplasms of male genital organs, (C60-C63)	61	0	0	0	0	0	0	0	0	0	4	14	43	0
Malignant neoplasms of urinary tract (C64-C68)	85	0	0	0	0	0	0	0	0	4	13	32	36	0
Malignant neoplasms of meninges, brain, and other parts of central nervous system (C70-C72)	39	0	1	2	0	0	0	3	3	4	11	7	8	0
Malignant neoplasms of lymphoid, hematopoietic, and related tissues (C81-C96)	133	0	0	0	0	0	1	1	4	2	20	30	75	0
All other and unspecified malignant neoplasms (C40-C49, C69, C73-C80,C97)	171	0	0	0	0	0	1	1	5	17	26	45	76	0
<b>Cerebrovascular Diseases (I60-I69)</b>	321	0	0	0	0	0	0	2	4	6	17	50	242	0

TABLE F-19 (continued)  
(2006 - White, Both Sexes)

	Age of Decedent													
	Total	< 1	1-4	5-9	10-14	15-19	20-24	25-34	35-44	45-54	55-64	65-74	75+	Unk
<b>Chronic Lower Respiratory Diseases (J40-J47)</b>	304	0	0	0	0	0	0	1	0	6	20	76	201	0
<b>Accidents (unintentional injuries) (V01-X59, Y85-Y86)</b>	265	1	3	2	1	19	10	35	47	29	21	28	69	0
Motor Vehicle Accidents (V02-V04, (V09.0,V09.2,V12-V14, V19.0-V19.2, V19.4-V19.6,V20-V79, V80.3-V80.5, V81.0-V81.1, V82.0-V82.1, V83-V86, V87.0-V87.8, V88.0-V88.8,V89.0,V89.2)	114	1	2	1	1	15	8	16	26	13	6	13	12	0
Nontransport Accidents (W00-X59, Y86)	146	0	1	1	0	4	2	19	19	14	15	14	57	0
<b>Diabetes Mellitus (E10-E14)</b>	143	0	0	0	0	0	0	0	3	11	24	26	79	0
<b>Influenza and pneumonia (J10-J18)</b>	119	0	0	0	0	0	0	1	2	3	4	16	93	0
<b>Alzheimer's Disease (G30)</b>	173	0	0	0	0	0	0	0	0	0	4	7	162	0
<b>Nephritis, Nephrotic Syndrome, and Nephrosis (N00-N07, N17-N19, N25-N27)</b>	114	2	0	0	0	0	0	0	2	7	9	18	76	0
<b>Septicemia (A40-A41)</b>	84	0	0	0	0	1	0	0	3	9	11	16	44	0
<b>Intentional self-harm (suicide) (X60-X84, Y87.0)</b>	79	0	0	0	0	5	6	11	16	15	14	5	7	0
<b>Chronic liver disease and Cirrhosis (K70, K73-K74)</b>	62	0	0	0	0	0	0	0	12	11	13	15	11	0
<b>Essential (primary) hypertension and hypertensive renal disease (I10, I12)</b>	31	0	0	0	0	0	0	0	0	1	3	3	24	0
<b>Aortic aneurysm and dissection (I71)</b>	24	0	0	0	0	0	0	0	0	0	1	5	18	0
<b>Assault (homicide) (X85-Y09, Y87.1)</b>	11	0	0	0	1	0	2	2	5	0	0	0	1	0
<b>Human immunodeficiency virus (HIV) (B20-B24)</b>	10	0	0	0	0	0	0	1	4	2	3	0	0	0
<b>Certain conditions originating in the perinatal period (P00-P96)</b>	25	25	0	0	0	0	0	0	0	0	0	0	0	0
<b>Congenital malformations, deformations, and chromosomal abnormalities (Q00-Q99)</b>	21	10	0	0	0	1	2	0	2	1	0	3	2	0
<b>All Other Causes</b>	1060	12	0	2	1	2	9	22	49	70	94	103	696	0
<b>TOTAL</b>	5856	50	4	6	3	28	32	85	214	378	648	979	3428	1

LCDAGWHT

**Notes:**

\*ICD Codes, Tenth Revision.

**Source:**

Delaware Health Statistics Center

TABLE F-20  
NUMBER OF DEATHS BY AGE FOR SELECTED LEADING CAUSES OF DEATH  
DELAWARE, 2006  
**(WHITE MALES)**

Cause of Death*	Age of Decedent													
	Total	< 1	1-4	5-9	10-14	15-19	20-24	25-34	35-44	45-54	55-64	65-74	75+	Unk
<b>Diseases of the Heart (I00-I09, I11, I13, I20-I51)</b>	771	0	0	0	0	0	1	2	19	71	111	133	433	1
Acute rheumatic fever and chronic rheumatic heart disease (I00-I09)	3	0	0	0	0	0	0	0	0	1	1	0	1	0
Hypertensive heart disease (I11)	27	0	0	0	0	0	0	0	3	5	3	4	12	0
Hypertensive heart and renal disease (I13)	1	0	0	0	0	0	0	0	0	0	1	0	0	0
Ischemic heart disease (I20-I25)	569	0	0	0	0	0	0	0	11	53	78	106	320	1
All other forms of heart disease (I26-I51)	171	0	0	0	0	0	1	2	5	12	28	23	100	0
<b>Malignant Neoplasms (C00-C97)</b>	786	0	0	2	0	0	2	2	19	52	131	224	354	0
Malignant neoplasms of lip, oral and pharynx (C00-C14)	14	0	0	0	0	0	0	0	1	2	2	5	4	0
Malignant neoplasms of digestive organs (C15-C26)	196	0	0	0	0	0	0	0	8	11	46	49	82	0
Malignant neoplasms of respiratory and intrathoracic organs (C30-C39)	254	0	0	0	0	0	0	0	3	19	43	84	105	0
Malignant neoplasms of breast (C50)	1	0	0	0	0	0	0	0	0	0	0	0	1	0
Malignant neoplasms of male genital organs, (C60-C63)	61	0	0	0	0	0	0	0	0	0	4	14	43	0
Malignant neoplasms of urinary tract (C64-C68)	62	0	0	0	0	0	0	0	0	4	11	24	23	0
Malignant neoplasms of meninges, brain, and other parts of central nervous system (C70-C72)	25	0	0	2	0	0	0	1	2	4	4	6	6	0
Malignant neoplasms of lymphoid, hematopoietic, and related tissues (C81-C96)	77	0	0	0	0	0	1	1	1	1	11	17	45	0
All other and unspecified malignant neoplasms (C40-C49, C69, C73-C80, C97)	96	0	0	0	0	0	1	0	4	11	10	25	45	0
<b>Cerebrovascular Diseases (I60-I69)</b>	107	0	0	0	0	0	0	0	2	3	7	26	69	0

TABLE F-20 (continued)  
(2006 - White Males)

	Age of Decedent													
	Total	< 1	1-4	5-9	10-14	15-19	20-24	25-34	35-44	45-54	55-64	65-74	75+	Unk
<b>Chronic Lower Respiratory Diseases (J40-J47)</b>	134	0	0	0	0	0	0	0	0	3	8	39	84	0
<b>Accidents (unintentional injuries) (V01-X59, Y85-Y86)</b>	168	1	3	2	0	11	9	25	31	21	15	17	33	0
Motor Vehicle Accidents (V02-V04, (V09.0,V09.2,V12-V14, V19.0-V19.2, V19.4-V19.6,V20-V79, V80.3-V80.5, V81.0-V81.1, V82.0-V82.1, V83-V86, V87.0-V87.8, V88.0-V88.8,V89.0,V89.2)	77	1	2	1	0	8	7	11	17	11	5	7	7	0
Nontransport Accidents (W00-X59, Y86)	88	0	1	1	0	3	2	14	13	9	10	9	26	0
<b>Diabetes Mellitus (E10-E14)</b>	69	0	0	0	0	0	0	0	2	4	17	12	34	0
<b>Influenza and pneumonia (J10-J18)</b>	54	0	0	0	0	0	0	1	2	2	3	8	38	0
<b>Alzheimer's Disease (G30)</b>	60	0	0	0	0	0	0	0	0	0	4	4	52	0
<b>Nephritis, Nephrotic Syndrome, and Nephrosis (N00-N07, N17-N19, N25-N27)</b>	63	2	0	0	0	0	0	0	2	4	8	14	33	0
<b>Septicemia (A40-A41)</b>	38	0	0	0	0	0	0	0	3	5	3	8	19	0
<b>Intentional self-harm (suicide) (X60-X84, Y87.0)</b>	63	0	0	0	0	4	5	9	13	13	9	4	6	0
<b>Chronic liver disease and Cirrhosis (K70, K73-K74)</b>	44	0	0	0	0	0	0	0	9	9	10	9	7	0
<b>Essential (primary) hypertension and hypertensive renal disease (I10, I12)</b>	11	0	0	0	0	0	0	0	0	0	1	3	7	0
<b>Aortic aneurysm and dissection (I71)</b>	17	0	0	0	0	0	0	0	0	0	1	5	11	0
<b>Assault (homicide) (X85-Y09, Y87.1)</b>	7	0	0	0	1	0	2	2	2	0	0	0	0	0
<b>Human immunodeficiency virus (HIV) (B20-B24)</b>	9	0	0	0	0	0	0	1	3	2	3	0	0	0
<b>Certain conditions originating in the perinatal period (P00-P96)</b>	16	16	0	0	0	0	0	0	0	0	0	0	0	0
<b>Congenital malformations, deformations, and chromosomal abnormalities (Q00-Q99)</b>	8	4	0	0	0	0	1	0	2	0	0	1	0	0
<b>All Other Causes</b>	467	5	0	1	1	1	7	15	32	37	60	54	254	0
<b>TOTAL</b>	2892	28	3	5	2	16	27	57	141	226	391	561	1434	1

LCDAGEWM

**Notes:**

\*ICD Codes, Tenth Revision.

**Source:**

Delaware Health Statistics Center



TABLE F-21  
NUMBER OF DEATHS BY AGE FOR SELECTED LEADING CAUSES OF DEATH  
DELAWARE, 2006  
(WHITE FEMALES)

Cause of Death*	Age of Decedent													
	Total	< 1	1-4	5-9	10-14	15-19	20-24	25-34	35-44	45-54	55-64	65-74	75+	Unk
<b>Diseases of the Heart (I00-I09, I11, I13, I20-I51)</b>	776	0	0	0	0	0	0	2	7	31	49	81	606	0
Acute rheumatic fever and chronic rheumatic heart disease (I00-I09)	3	0	0	0	0	0	0	0	0	0	0	0	3	0
Hypertensive heart disease (I11)	33	0	0	0	0	0	0	0	2	4	1	5	21	0
Hypertensive heart and renal disease (I13)	1	0	0	0	0	0	0	0	0	0	0	0	1	0
Ischemic heart disease (I20-I25)	534	0	0	0	0	0	0	0	4	18	30	58	424	0
All other forms of heart disease (I26-I51)	205	0	0	0	0	0	0	2	1	9	18	18	157	0
<b>Malignant Neoplasms (C00-C97)</b>	677	0	1	0	0	0	0	4	20	53	119	170	310	0
Malignant neoplasms of lip, oral and pharynx (C00-C14)	5	0	0	0	0	0	0	0	0	0	1	2	2	0
Malignant neoplasms of digestive organs (C15-C26)	133	0	0	0	0	0	0	1	1	7	14	27	83	0
Malignant neoplasms of respiratory and intrathoracic organs (C30-C39)	224	0	0	0	0	0	0	0	2	15	44	70	93	0
Malignant neoplasms of breast (C50)	87	0	0	0	0	0	0	0	9	13	20	15	30	0
Malignant neoplasms of female genital organs, (C51-C58)	60	0	0	0	0	0	0	0	3	11	6	14	26	0
Malignant neoplasms of urinary tract (C64-C68)	23	0	0	0	0	0	0	0	0	0	2	8	13	0
Malignant neoplasms of meninges, brain, and other parts of central nervous system (C70-C72)	14	0	1	0	0	0	0	2	1	0	7	1	2	0
Malignant neoplasms of lymphoid, hematopoietic, and related tissues (C81-C96)	56	0	0	0	0	0	0	0	3	1	9	13	30	0
All other and unspecified malignant neoplasms (C40-C49, C69, C73-C80,C97)	75	0	0	0	0	0	0	1	1	6	16	20	31	0
<b>Cerebrovascular Diseases (I60-I69)</b>	214	0	0	0	0	0	0	2	2	3	10	24	173	0

TABLE F-21 (continued)  
(2006 - White Females)

	Age of Decedent													Unk
	Total	< 1	1-4	5-9	10-14	15-19	20-24	25-34	35-44	45-54	55-64	65-74	75+	
<b>Chronic Lower Respiratory Diseases (J40-J47)</b>	170	0	0	0	0	0	0	1	0	3	12	37	117	0
<b>Accidents (unintentional injuries) (V01-X59, Y85-Y86)</b>	97	0	0	0	1	8	1	10	16	8	6	11	36	0
Motor Vehicle Accidents (V02-V04, (V09.0,V09.2,V12-V14, V19.0-V19.2, V19.4-V19.6,V20-V79, V80.3-V80.5, V81.0-V81.1, V82.0-V82.1, V83-V86, V87.0-V87.8, V88.0-V88.8,V89.0,V89.2)	37	0	0	0	1	7	1	5	9	2	1	6	5	0
Nontransport Accidents (W00-X59, Y86)	58	0	0	0	0	1	0	5	6	5	5	5	31	0
<b>Diabetes Mellitus (E10-E14)</b>	74	0	0	0	0	0	0	0	1	7	7	14	45	0
<b>Influenza and pneumonia (J10-J18)</b>	65	0	0	0	0	0	0	0	0	1	1	8	55	0
<b>Alzheimer's Disease (G30)</b>	113	0	0	0	0	0	0	0	0	0	0	3	110	0
<b>Nephritis, Nephrotic Syndrome, and Nephrosis (N00-N07, N17-N19, N25-N27)</b>	51	0	0	0	0	0	0	0	0	3	1	4	43	0
<b>Septicemia (A40-A41)</b>	46	0	0	0	0	1	0	0	0	4	8	8	25	0
<b>Intentional self-harm (suicide) (X60-X84, Y87.0)</b>	16	0	0	0	0	1	1	2	3	2	5	1	1	0
<b>Chronic liver disease and Cirrhosis (K70, K73-K74)</b>	18	0	0	0	0	0	0	0	3	2	3	6	4	0
<b>Essential (primary) hypertension and hypertensive renal disease (I10, I12)</b>	20	0	0	0	0	0	0	0	0	1	2	0	17	0
<b>Aortic aneurysm and dissection (I71)</b>	7	0	0	0	0	0	0	0	0	0	0	0	7	0
<b>Assault (homicide) (X85-Y09, Y87.1)</b>	4	0	0	0	0	0	0	0	3	0	0	0	1	0
<b>Human immunodeficiency virus (HIV) (B20-B24)</b>	1	0	0	0	0	0	0	0	1	0	0	0	0	0
<b>Certain conditions originating in the perinatal period (P00-P96)</b>	9	9	0	0	0	0	0	0	0	0	0	0	0	0
<b>Congenital malformations, deformations, and chromosomal abnormalities (Q00-Q99)</b>	13	6	0	0	0	1	1	0	0	1	0	2	2	0
<b>All Other Causes</b>	593	7	0	1	0	1	2	7	17	33	34	49	442	0
<b>TOTAL</b>	2964	22	1	1	1	12	5	28	73	152	257	418	1994	0

LCDAGEWF

**Note:**

\*ICD Codes, Tenth Revision.

**Source:**

Delaware Health Statistics Center

TABLE F-22  
NUMBER OF DEATHS BY AGE FOR SELECTED LEADING CAUSES OF DEATH  
DELAWARE, 2006  
**(BLACK, BOTH SEXES)**

Cause of Death*	Age of Decedent													
	Total	< 1	1-4	5-9	10-14	15-19	20-24	25-34	35-44	45-54	55-64	65-74	75+	Unk
<b>Diseases of the Heart (I00-I09, I11, I13, I20-I51)</b>	285	1	0	0	0	0	0	5	13	37	39	65	125	0
Acute rheumatic fever and chronic rheumatic heart disease (I00-I09)	2	0	0	0	0	0	0	0	0	0	0	1	1	0
Hypertensive heart disease (I11)	21	0	0	0	0	0	0	0	2	2	3	5	9	0
Hypertensive heart and renal disease (I13)	6	0	0	0	0	0	0	0	0	2	1	2	1	0
Ischemic heart disease (I20-I25)	184	0	0	0	0	0	0	2	2	24	21	42	93	0
All other forms of heart disease (I26-I51)	72	1	0	0	0	0	0	3	9	9	14	15	21	0
<b>Malignant Neoplasms (C00-C97)</b>	289	0	1	0	1	1	0	1	16	44	71	80	74	0
Malignant neoplasms of lip, oral and pharynx (C00-C14)	4	0	0	0	0	0	0	0	0	2	0	2	0	0
Malignant neoplasms of digestive organs (C15-C26)	69	0	0	0	0	0	0	0	3	13	16	20	17	0
Malignant neoplasms of respiratory and intrathoracic organs (C30-C39)	84	0	0	0	0	0	0	0	1	11	17	30	25	0
Malignant neoplasms of breast (C50)	21	0	0	0	0	0	0	0	4	3	8	3	3	0
Malignant neoplasms of female genital organs, (C51-C58)	20	0	0	0	0	0	0	0	3	1	8	5	3	0
Malignant neoplasms of male genital organs, (C60-C63)	19	0	0	0	0	0	0	0	0	0	4	6	9	0
Malignant neoplasms of urinary tract (C64-C68)	11	0	0	0	0	1	0	0	0	1	3	1	5	0
Malignant neoplasms of meninges, brain, and other parts of central nervous system (C70-C72)	6	0	0	0	0	0	0	0	0	1	2	1	2	0
Malignant neoplasms of lymphoid, hematopoietic, and related tissues (C81-C96)	19	0	1	0	0	0	0	0	2	4	5	3	4	0
All other and unspecified malignant neoplasms (C40-C49, C69, C73-C80,C97)	36	0	0	0	1	0	0	1	3	8	8	9	6	0
<b>Cerebrovascular Diseases (I60-I69)</b>	62	0	1	0	0	0	0	2	1	6	6	18	28	0

TABLE F-22 (continued)  
(2006 - Black, Both Sexes)

	Age of Decedent													
	Total	< 1	1-4	5-9	10-14	15-19	20-24	25-34	35-44	45-54	55-64	65-74	75+	Unk
<b>Chronic Lower Respiratory Diseases (J40-J47)</b>	37	0	0	0	0	0	0	1	1	1	4	11	19	0
<b>Accidents (unintentional injuries) (V01-X59, Y85-Y86)</b>	50	2	2	0	0	3	3	10	8	10	4	3	5	0
Motor Vehicle Accidents (V02-V04, (V09.0,V09.2,V12-V14, V19.0-V19.2, V19.4-V19.6,V20-V79, V80.3-V80.5, V81.0-V81.1, V82.0-V82.1, V83-V86, V87.0-V87.8, V88.0-V88.8,V89.0,V89.2)	18	0	0	0	0	2	2	6	3	3	1	1	0	0
Nontransport Accidents (W00-X59, Y86)	31	2	2	0	0	1	1	3	5	7	3	2	5	0
<b>Diabetes Mellitus (E10-E14)</b>	43	0	0	0	0	0	0	2	6	11	9	15	0	0
<b>Influenza and pneumonia (J10-J18)</b>	17	0	0	0	0	0	1	1	1	2	0	4	8	0
<b>Alzheimer's Disease (G30)</b>	12	0	0	0	0	0	0	0	0	0	0	2	10	0
<b>Nephritis, Nephrotic Syndrome, and Nephrosis (N00-N07, N17-N19, N25-N27)</b>	38	0	0	0	0	0	1	0	1	6	4	5	21	0
<b>Septicemia (A40-A41)</b>	30	0	0	0	1	0	0	1	2	3	5	3	15	0
<b>Intentional self-harm (suicide) (X60-X84, Y87.0)</b>	9	0	0	0	0	3	0	1	3	2	0	0	0	0
<b>Chronic liver disease and Cirrhosis (K70, K73-K74)</b>	11	0	0	0	0	0	0	0	0	3	4	2	2	0
<b>Essential (primary) hypertension and hypertensive renal disease (I10, I12)</b>	12	0	0	0	0	0	0	0	1	4	2	2	3	0
<b>Aortic aneurysm and dissection (I71)</b>	4	0	0	0	0	0	0	0	1	1	0	2	0	0
<b>Assault (homicide) (X85-Y09, Y87.1)</b>	37	0	0	0	0	5	10	12	8	1	0	0	1	0
<b>Human immunodeficiency virus (HIV) (B20-B24)</b>	43	0	0	0	0	0	0	2	9	24	7	1	0	0
<b>Certain conditions originating in the perinatal period (P00-P96)</b>	29	29	0	0	0	0	0	0	0	0	0	0	0	0
<b>Congenital malformations, deformations, and chromosomal abnormalities (Q00-Q99)</b>	6	2	0	0	0	0	0	0	1	1	1	1	0	0
<b>All Other Causes</b>	211	10	1	0	0	1	3	2	19	26	31	29	89	0
<b>TOTAL</b>	1225	44	5	0	2	13	18	38	87	177	189	237	415	0

LCDAGBLK

**Notes:**

\*ICD Codes, Tenth Revision.

**Source:**

Delaware Health Statistics Center

TABLE F-23  
NUMBER OF DEATHS BY AGE FOR SELECTED LEADING CAUSES OF DEATH  
DELAWARE, 2006  
**(BLACK MALES)**

Cause of Death*	Age of Decedent													
	Total	< 1	1-4	5-9	10-14	15-19	20-24	25-34	35-44	45-54	55-64	65-74	75+	Unk
<b>Diseases of the Heart (I00-I09, I11, I13, I20-I51)</b>	150	0	0	0	0	0	0	2	11	22	23	40	52	0
Acute rheumatic fever and chronic rheumatic heart disease (I00-I09)	0	0	0	0	0	0	0	0	0	0	0	0	0	0
Hypertensive heart disease (I11)	14	0	0	0	0	0	0	0	2	0	2	4	6	0
Hypertensive heart and renal disease (I13)	3	0	0	0	0	0	0	0	0	1	1	1	0	0
Ischemic heart disease (I20-I25)	102	0	0	0	0	0	0	1	2	18	14	28	39	0
All other forms of heart disease (I26-I51)	31	0	0	0	0	0	0	1	7	3	6	7	7	0
<b>Malignant Neoplasms (C00-C97)</b>	141	0	0	0	0	0	0	0	4	20	35	48	34	0
Malignant neoplasms of lip, oral and pharynx (C00-C14)	4	0	0	0	0	0	0	0	0	2	0	2	0	0
Malignant neoplasms of digestive organs (C15-C26)	41	0	0	0	0	0	0	0	2	10	13	13	3	0
Malignant neoplasms of respiratory and intrathoracic organs (C30-C39)	40	0	0	0	0	0	0	0	0	3	7	17	13	0
Malignant neoplasms of breast (C50)	0	0	0	0	0	0	0	0	0	0	0	0	0	0
Malignant neoplasms of male genital organs, (C60-C63)	19	0	0	0	0	0	0	0	0	0	4	6	9	0
Malignant neoplasms of urinary tract (C64-C68)	5	0	0	0	0	0	0	0	0	0	1	1	3	0
Malignant neoplasms of meninges, brain, and other parts of central nervous system (C70-C72)	4	0	0	0	0	0	0	0	0	0	2	0	2	0
Malignant neoplasms of lymphoid, hematopoietic, and related tissues (C81-C96)	10	0	0	0	0	0	0	0	0	2	3	3	2	0
All other and unspecified malignant neoplasms (C40-C49, C69, C73-C80,C97)	18	0	0	0	0	0	0	0	2	3	5	6	2	0
<b>Cerebrovascular Diseases (I60-I69)</b>	29	0	1	0	0	0	0	1	1	3	4	9	10	0

TABLE F-23 (continued)  
(2006 - Black Males)

	Age of Decedent													
	Total	< 1	1-4	5-9	10-14	15-19	20-24	25-34	35-44	45-54	55-64	65-74	75+	Unk
<b>Chronic Lower Respiratory Diseases (J40-J47)</b>	22	0	0	0	0	0	0	0	1	0	4	5	12	0
<b>Accidents (unintentional injuries) (V01-X59, Y85-Y86)</b>	29	0	1	0	0	2	2	8	5	6	1	2	2	0
Motor Vehicle Accidents (V02-V04, (V09.0,V09.2,V12-V14, V19.0-V19.2, V19.4-V19.6,V20-V79, V80.3-V80.5, V81.0-V81.1, V82.0-V82.1, V83-V86, V87.0-V87.8, V88.0-V88.8,V89.0,V89.2)	11	0	0	0	0	1	1	4	2	2	0	1	0	0
Nontransport Accidents (W00-X59, Y86)	17	0	1	0	0	1	1	3	3	4	1	1	2	0
<b>Diabetes Mellitus (E10-E14)</b>	20	0	0	0	0	0	0	0	1	2	4	4	9	0
<b>Influenza and pneumonia (J10-J18)</b>	9	0	0	0	0	0	1	1	0	2	0	0	5	0
<b>Alzheimer's Disease (G30)</b>	4	0	0	0	0	0	0	0	0	0	0	1	3	0
<b>Nephritis, Nephrotic Syndrome, and Nephrosis (N00-N07, N17-N19, N25-N27)</b>	21	0	0	0	0	0	0	0	1	5	2	4	9	0
<b>Septicemia (A40-A41)</b>	11	0	0	0	1	0	0	0	1	2	1	3	3	0
<b>Intentional self-harm (suicide) (X60-X84, Y87.0)</b>	9	0	0	0	0	3	0	1	3	2	0	0	0	0
<b>Chronic liver disease and Cirrhosis (K70, K73-K74)</b>	9	0	0	0	0	0	0	0	0	3	3	2	1	0
<b>Essential (primary) hypertension and hypertensive renal disease (I10, I12)</b>	7	0	0	0	0	0	0	0	0	4	2	1	0	0
<b>Aortic aneurysm and dissection (I71)</b>	3	0	0	0	0	0	0	0	1	1	0	1	0	0
<b>Assault (homicide) (X85-Y09, Y87.1)</b>	33	0	0	0	0	5	9	10	7	1	0	0	1	0
<b>Human immunodeficiency virus (HIV) (B20-B24)</b>	24	0	0	0	0	0	0	1	5	11	6	1	0	0
<b>Certain conditions originating in the perinatal period (P00-P96)</b>	13	13	0	0	0	0	0	0	0	0	0	0	0	0
<b>Congenital malformations, deformations, and chromosomal abnormalities (Q00-Q99)</b>	2	1	0	0	0	0	0	0	0	1	0	0	0	0
<b>All Other Causes</b>	98	7	0	0	0	1	0	1	10	12	20	15	32	0
<b>TOTAL</b>	634	21	2	0	1	11	12	25	51	97	105	136	173	0

**Notes:**

1. \*ICD Codes, Tenth Revision.

**Source:**

Delaware Health Statistics Center

LCDAGEBM

TABLE F-24  
NUMBER OF DEATHS BY AGE FOR SELECTED LEADING CAUSES OF DEATH  
DELAWARE, 2006  
**(BLACK FEMALES)**

Cause of Death*	Age of Decedent													
	Total	< 1	1-4	5-9	10-14	15-19	20-24	25-34	35-44	45-54	55-64	65-74	75+	Unk
<b>Diseases of the Heart (I00-I09, I11, I13, I20-I51)</b>	135	1	0	0	0	0	0	3	2	15	16	25	73	0
Acute rheumatic fever and chronic rheumatic heart disease (I00-I09)	2	0	0	0	0	0	0	0	0	0	0	1	1	0
Hypertensive heart disease (I11)	7	0	0	0	0	0	0	0	0	2	1	1	3	0
Hypertensive heart and renal disease (I13)	3	0	0	0	0	0	0	0	0	1	0	1	1	0
Ischemic heart disease (I20-I25)	82	0	0	0	0	0	0	1	0	6	7	14	54	0
All other forms of heart disease (I26-I51)	41	1	0	0	0	0	0	2	2	6	8	8	14	0
<b>Malignant Neoplasms (C00-C97)</b>	148	0	1	0	1	1	0	1	12	24	36	32	40	0
Malignant neoplasms of lip, oral and pharynx (C00-C14)	0	0	0	0	0	0	0	0	0	0	0	0	0	0
Malignant neoplasms of digestive organs (C15-C26)	28	0	0	0	0	0	0	0	1	3	3	7	14	0
Malignant neoplasms of respiratory and intrathoracic organs (C30-C39)	44	0	0	0	0	0	0	0	1	8	10	13	12	0
Malignant neoplasms of breast (C50)	21	0	0	0	0	0	0	0	4	3	8	3	3	0
Malignant neoplasms of female genital organs, (C51-C58)	20	0	0	0	0	0	0	0	3	1	8	5	3	0
Malignant neoplasms of urinary tract (C64-C68)	6	0	0	0	0	1	0	0	0	1	2	0	2	0
Malignant neoplasms of meninges, brain, and other parts of central nervous system (C70-C72)	2	0	0	0	0	0	0	0	0	1	0	1	0	0
Malignant neoplasms of lymphoid, hematopoietic, and related tissues (C81-C96)	9	0	1	0	0	0	0	0	2	2	2	0	2	0
All other and unspecified malignant neoplasms (C40-C49, C69, C73-C80, C97)	18	0	0	0	1	0	0	1	1	5	3	3	4	0
<b>Cerebrovascular Diseases (I60-I69)</b>	33	0	0	0	0	0	0	1	0	3	2	9	18	0

TABLE F-24 (continued)  
(2006 - Black Females)

	Age of Decedent													
	Total	< 1	1-4	5-9	10-14	15-19	20-24	25-34	35-44	45-54	55-64	65-74	75+	Unk
<b>Chronic Lower Respiratory Diseases (J40-J47)</b>	15	0	0	0	0	0	0	1	0	1	0	6	7	0
<b>Accidents (unintentional injuries) (V01-X59, Y85-Y86)</b>	21	2	1	0	0	1	1	2	3	4	3	1	3	0
Motor Vehicle Accidents (V02-V04, (V09.0,V09.2,V12-V14, V19.0-V19.2, V19.4-V19.6,V20-V79, V80.3-V80.5, V81.0-V81.1, V82.0-V82.1, V83-V86, V87.0-V87.8, V88.0-V88.8,V89.0,V89.2)	7	0	0	0	0	1	1	2	1	1	1	0	0	0
Nontransport Accidents (W00-X59, Y86)	14	2	1	0	0	0	0	0	2	3	2	1	3	0
<b>Diabetes Mellitus (E10-E14)</b>	23	0	0	0	0	0	0	0	1	4	7	5	6	0
<b>Influenza and pneumonia (J10-J18)</b>	8	0	0	0	0	0	0	0	1	0	0	4	3	0
<b>Alzheimer's Disease (G30)</b>	8	0	0	0	0	0	0	0	0	0	0	1	7	0
<b>Nephritis, Nephrotic Syndrome, and Nephrosis (N00-N07, N17-N19, N25-N27)</b>	17	0	0	0	0	0	1	0	0	1	2	1	12	0
<b>Septicemia (A40-A41)</b>	19	0	0	0	0	0	0	1	1	1	4	0	12	0
<b>Intentional self-harm (suicide) (X60-X84, Y87.0)</b>	0	0	0	0	0	0	0	0	0	0	0	0	0	0
<b>Chronic liver disease and Cirrhosis (K70, K73-K74)</b>	2	0	0	0	0	0	0	0	0	0	1	0	1	0
<b>Essential (primary) hypertension and hypertensive renal disease (I10, I12)</b>	5	0	0	0	0	0	0	0	1	0	0	1	3	0
<b>Aortic aneurysm and dissection (I71)</b>	1	0	0	0	0	0	0	0	0	0	0	1	0	0
<b>Assault (homicide) (X85-Y09, Y87.1)</b>	4	0	0	0	0	0	1	2	1	0	0	0	0	0
<b>Human immunodeficiency virus (HIV) (B20-B24)</b>	19	0	0	0	0	0	0	1	4	13	1	0	0	0
<b>Certain conditions originating in the perinatal period (P00-P96)</b>	16	16	0	0	0	0	0	0	0	0	0	0	0	0
<b>Congenital malformations, deformations, and chromosomal abnormalities (Q00-Q99)</b>	4	1	0	0	0	0	0	0	1	0	1	1	0	0
<b>All Other Causes</b>	113	3	1	0	0	0	3	1	9	14	11	14	57	0
<b>TOTAL</b>	591	23	3	0	1	2	6	13	36	80	84	101	242	0

Note:  
\*ICD Codes, Tenth Revision.

LCDAGEBF

Source:  
Delaware Health Statistics Center



TABLE F-25  
HIV INFECTION/AIDS<sup>1</sup> DEATHS BY COUNTY, RACE, HISPANIC<sup>2</sup> ORIGIN AND SEX  
U.S., DELAWARE, AND COUNTIES, 1992-2006

Area/ Race	1992	1993	1994	1995	1996	1997	1998	1999	2000	2001	2002	2003	2004	2005	2006
<b>Delaware</b>	64	106	138	163	132	60	55	65	68	67	70	80	58	63	53
Males	57	82	115	132	101	45	47	49	46	47	51	58	36	43	33
White	29	38	47	55	36	10	8	14	11	10	14	18	7	8	9
Black	28	43	68	76	65	35	39	34	35	37	37	40	29	35	24
Females	7	24	23	31	31	15	8	16	22	20	19	22	22	20	20
White	5	7	4	8	5	1	1	2	2	1	6	3	6	2	1
Black	2	17	19	23	26	14	7	14	20	19	13	19	16	18	19
<b>Kent</b>	13	11	16	17	13	6	5	8	4	9	4	8	8	5	11
Males	11	9	12	14	9	6	3	5	0	5	4	7	5	2	7
White	7	5	4	7	4	1	0	3	0	2	0	2	2	0	1
Black	4	4	8	6	5	5	3	2	0	3	4	5	3	2	6
Females	2	2	4	3	4	0	2	3	4	4	0	1	3	3	4
White	2	1	2	0	2	0	0	0	2	0	0	1	0	0	0
Black	0	1	2	3	2	0	2	3	2	4	0	0	3	3	4
<b>New Castle</b>	40	85	100	121	109	49	44	45	54	52	56	69	46	51	34
Males	37	66	84	96	82	34	38	34	37	38	40	49	29	35	19
White	18	27	29	29	23	6	7	7	6	6	9	15	4	6	5
Black	19	38	55	67	59	28	31	27	31	32	31	34	25	29	14
Females	3	19	16	25	27	15	6	11	17	14	16	20	17	16	15
White	1	5	1	8	3	1	1	2	0	1	4	2	5	2	1
Black	2	14	15	17	24	14	5	9	17	13	12	18	12	14	14
Wilmington	18	50	56	71	68	27	28	23	35	37	28	43	25	33	19
Males	18	38	45	59	47	15	24	20	25	28	22	30	15	21	7
White	7	7	5	7	4	2	2	2	4	3	4	5	0	2	0
Black	11	30	40	52	43	13	22	18	21	25	18	25	15	19	7
Females	0	12	11	12	21	12	4	3	10	9	6	13	10	12	12
White	0	2	0	2	1	0	1	0	0	1	0	0	1	1	1
Black	0	10	11	10	20	12	3	3	10	8	6	13	9	11	11
Bal of NCCo	22	35	44	50	41	22	16	22	19	15	28	26	21	18	15
Males	19	28	39	37	35	19	14	14	12	10	18	19	14	14	12
White	11	20	24	22	19	4	5	5	2	3	5	10	4	4	5
Black	8	8	15	15	16	15	9	9	10	7	13	9	10	10	7
Females	3	7	5	13	6	3	2	8	7	5	10	7	7	4	3
White	1	3	1	6	2	1	0	2	0	0	4	2	4	1	0
Black	2	4	4	7	4	2	2	6	7	5	6	5	3	3	3
<b>Sussex</b>	11	10	22	25	10	5	6	12	10	6	10	3	4	7	8
Males	9	7	19	22	10	5	6	10	9	4	7	2	2	6	7
White	4	6	14	19	9	3	1	4	5	2	5	1	1	2	3
Black	5	1	5	3	1	2	5	5	4	2	2	1	1	4	4
Females	2	3	3	3	0	0	0	2	1	2	3	1	2	1	1
White	2	1	1	0	0	0	0	0	0	0	2	0	1	0	0
Black	0	2	2	3	0	0	0	2	1	2	1	1	1	1	1
<b>Hispanic</b>	5	4	3	11	5	1	3	1	1	3	4	2	1	2	1
Males	5	2	2	10	3	1	3	1	1	2	4	1	0	2	0
Females	0	2	1	1	2	0	0	0	0	1	0	1	1	0	1

**Note:**

1. See Table F-12 for ICD-9 and ICD-10 Codes.
2. People of Hispanic origin may be of any race. See Hispanic Origin in the Technical Notes.

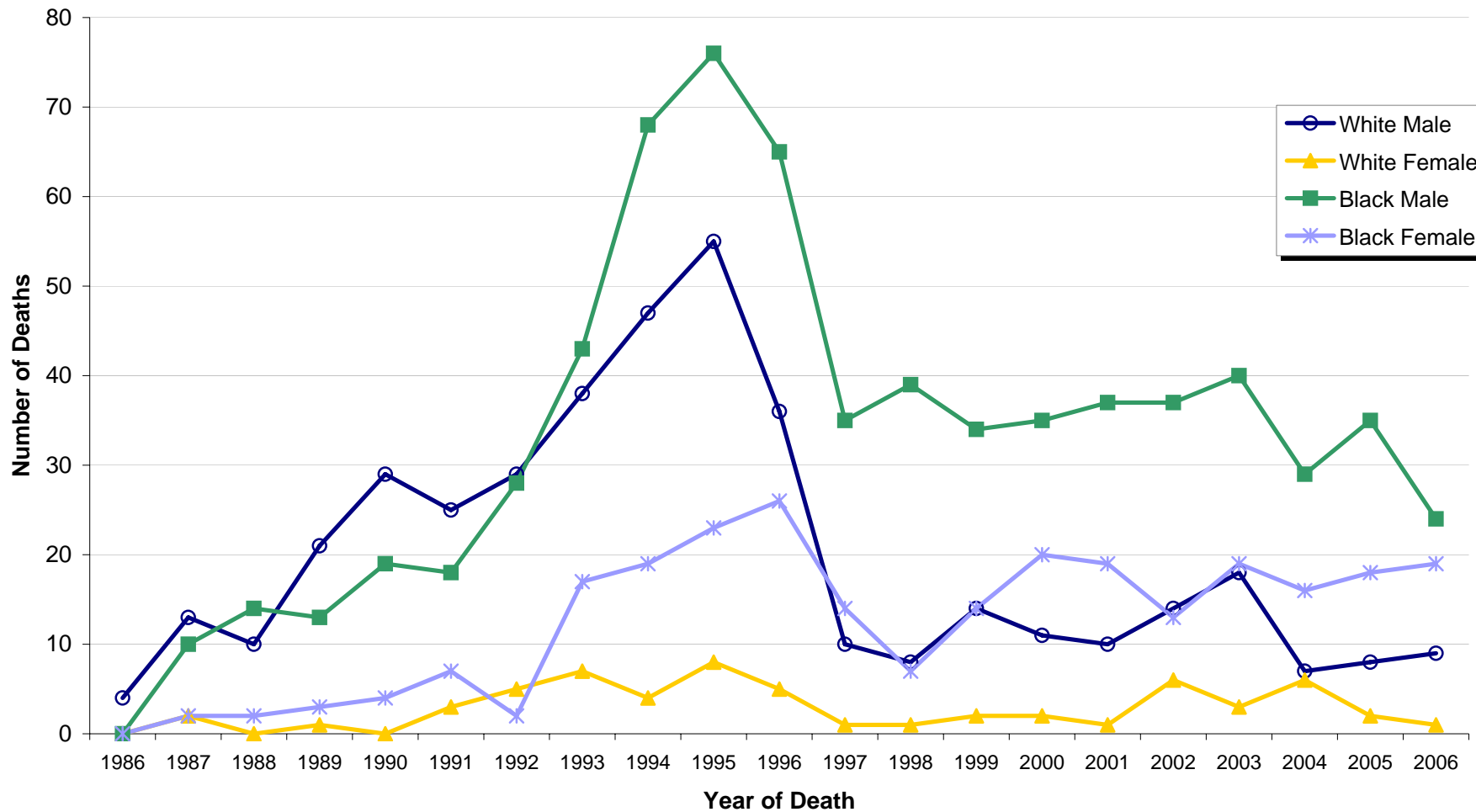
**Sources:**

Delaware Health Statistics Center  
National Center for Health Statistics

AIDS

**Figure F-3**  
**Number of HIV Deaths by Race and Sex**

**Delaware, 1986-2006**



Source: Delaware Health Statistics Center

TABLE F-26  
NUMBER AND PERCENT OF DEATHS BY METHOD OF DISPOSITION AND RACE  
DELAWARE, COUNTIES AND CITY OF WILMINGTON, 2006

Area/ Method of Disposition	Race							
	All Races		White		Black		Other	
	Number	Percent	Number	Percent	Number	Percent	Number	Percent
<b>Delaware</b>	7144	100.0	5856	100.0	1225	100.0	63	100.0
Burial	4686	65.6	3680	62.8	976	79.7	30	47.6
Cremation	2357	33.0	2084	35.6	241	19.7	32	50.8
Donation	39	0.5	39	0.7	0	0.0	0	0.0
Removal from State	30	0.4	28	0.5	2	0.2	0	0.0
Unknown	32	0.4	25	0.4	6	0.5	1	1.6
<b>Kent</b>	1219	100.0	967	100.0	234	100.0	18	100.0
Burial	808	66.3	612	63.3	184	78.6	12	66.7
Cremation	390	32.0	336	34.7	48	20.5	6	33.3
Donation	9	0.7	9	0.9	0	0.0	0	0.0
Removal from State	3	0.2	2	0.2	1	0.4	0	0.0
Unknown	9	0.7	8	0.8	1	0.4	0	0.0
<b>New Castle</b>	4039	100.0	3212	100.0	794	100.0	33	100.0
Burial	2697	66.8	2079	64.7	608	76.6	10	30.3
Cremation	1291	32.0	1089	33.9	180	22.7	22	66.7
Donation	19	0.5	19	0.6	0	0.0	0	0.0
Removal from State	17	0.4	16	0.5	1	0.1	0	0.0
Unknown	15	0.4	9	0.3	5	0.6	1	3.0
Wilmington	728	100.0	337	100.0	385	100.0	6	100.0
Burial	501	68.8	214	63.5	284	73.8	3	50.0
Cremation	218	29.9	118	35.0	98	25.5	2	33.3
Donation	2	0.3	2	0.6	0	0.0	0	0.0
Removal from State	3	0.4	3	0.9	0	0.0	0	0.0
Unknown	4	0.5	0	0.0	3	0.8	1	16.7
Balance of NC County	3311	100.0	2875	100.0	409	100.0	27	100.0
Burial	2196	66.3	1865	64.9	324	79.2	7	25.9
Cremation	1073	32.4	971	33.8	82	20.0	20	74.1
Donation	17	0.5	17	0.6	0	0.0	0	0.0
Removal from State	14	0.4	13	0.5	1	0.2	0	0.0
Unknown	11	0.3	9	0.3	2	0.5	0	0.0
<b>Sussex</b>	1886	100.0	1677	100.0	197	100.0	12	100.0
Burial	1181	62.6	989	59.0	184	93.4	8	66.7
Cremation	676	35.8	659	39.3	13	6.6	4	33.3
Donation	11	0.6	11	0.7	0	0.0	0	0.0
Removal from State	10	0.5	10	0.6	0	0.0	0	0.0
Unknown	8	0.4	8	0.5	0	0.0	0	0.0

**Notes:**

1. Percentages are calculated based upon the total number of deaths in each race category.

DISPRACE

**Source:**

Delaware Health Statistics Center

TABLE F-27  
LIFE EXPECTANCY AT BIRTH\* BY RACE AND SEX

DELAWARE, 1986-2006

Year	Race and Sex								
	All Races			White			Black		
	Both Sexes	Male	Female	Both Sexes	Male	Female	Both Sexes	Male	Female
2006	78.4	75.7	81.0	79.1	76.4	81.7	74.8	71.4	77.8
2005	77.7	75.0	80.3	78.4	75.7	81.1	74.1	71.3	76.6
2004	77.8	74.9	80.5	78.3	75.5	80.9	73.8	70.4	77.0
2003	76.9	74.5	80.0	78.1	75.3	80.7	72.6	69.2	75.8
2002	77.3	74.6	79.8	77.8	75.4	80.1	73.8	69.5	77.9
2001	76.3	73.9	78.7	77.1	74.6	79.5	72.1	69.5	74.4
2000	76.5	73.9	79.0	77.1	74.5	79.6	72.5	69.4	75.5
1999	76.8	73.9	79.6	77.6	74.7	80.3	72.6	68.8	76.2
1998	75.9	73.3	78.4	77.0	74.5	79.4	70.3	66.9	73.5
1997	75.8	73.3	78.2	76.7	74.2	79.1	71.0	68.3	73.5
1996	75.4	72.5	78.1	76.7	73.9	79.4	68.8	65.2	72.2
1995	75.5	72.5	78.4	76.8	74.2	79.4	68.9	64.4	73.5
1994	75.1	71.4	78.7	76.1	72.6	79.6	69.5	65.0	74.1
1993	75.2	71.9	78.5	76.5	73.6	79.3	68.5	63.4	73.6
1992	75.4	72.4	78.2	76.3	73.5	78.9	70.3	66.2	74.3
1991	75.0	71.9	77.9	76.0	73.0	78.9	69.4	66.2	72.4
1990	75.0	71.9	77.9	76.0	73.2	78.8	69.3	65.4	73.1
1989	74.3	71.1	77.3	75.3	72.2	78.2	68.4	64.4	72.4
1988	74.2	70.9	77.3	75.1	71.9	78.2	68.8	65.0	72.6
1987	74.3	71.0	77.5	75.1	71.8	78.3	69.7	66.1	73.1
1986	74.0	70.5	77.5	74.9	71.4	78.3	68.9	65.0	72.8

LIFE\_TB1

**Note:**

\*Life expectancy at birth is the average expected lifetime of people born in the listed year.

**Source:**

Delaware Health Statistics Center

TABLE F-28  
AVERAGE REMAINING YEARS OF LIFE\* BY AGE, RACE, AND SEX

DELAWARE, 2006

Age Group	Race and Sex								
	All Races			White			Black		
	Both Sexes	Male	Female	Both Sexes	Male	Female	Both Sexes	Male	Female
0-5	78.4	75.7	81.0	79.1	76.4	81.7	74.8	71.4	77.8
5-10	74.1	71.4	76.7	74.7	72.0	77.2	71.0	67.5	74.2
10-15	69.1	66.5	71.7	69.7	67.1	72.2	66.0	62.5	69.2
15-20	64.2	61.5	66.7	64.7	62.1	67.2	61.1	57.6	64.2
20-25	59.4	56.8	61.9	60.0	57.4	62.4	56.3	52.9	59.3
25-30	54.6	52.2	57.0	55.2	52.7	57.5	51.6	48.4	54.6
30-35	50.0	47.6	52.2	50.5	48.1	52.7	46.9	43.8	49.7
35-40	45.2	42.9	47.4	45.7	43.5	47.9	42.3	39.3	45.1
40-45	40.6	38.5	42.6	41.1	39.0	43.1	37.8	34.9	40.4
45-50	36.2	34.1	38.1	36.7	34.7	38.5	33.5	30.6	36.0
50-55	31.8	29.8	33.6	32.2	30.3	33.9	29.5	26.7	31.9
55-60	27.6	25.7	29.3	27.9	26.1	29.6	25.6	23.0	27.9
60-65	23.5	21.7	25.0	23.7	22.0	25.2	21.8	19.2	24.0
65-70	19.7	18.1	21.1	19.9	18.4	21.2	18.4	16.0	20.4
70-75	16.2	14.9	17.3	16.3	15.0	17.3	15.6	13.3	17.3
75-80	13.0	11.8	13.8	13.0	11.9	13.8	12.9	11.0	14.2
80-85	10.1	9.3	10.6	10.1	9.3	10.5	10.1	8.7	11.0
85+	7.9	7.2	8.2	7.8	7.2	8.1	8.0	6.9	8.5

LIFE\_TB2

**Note:**

\*Average number of years of life remaining at the beginning of the age interval.

**Source:**

Delaware Health Statistics Center

TABLE F-29  
MATERNAL DEATHS

DELAWARE AND COUNTIES, 1982-2006

Year	Area			
	Delaware	Kent	New Castle	Sussex
2006	1	0	1	0
2005	1	0	1	0
2004	1	0	1	0
2003	2	0	2	0
2002	0	0	0	0
2001	2	0	1	1
2000	3	1	2	0
1999	1	0	1	0
1998	2	0	2	0
1997	1	0	1	0
1996	0	0	0	0
1995	0	0	0	0
1994	0	0	0	0
1993	0	0	0	0
1992	0	0	0	0
1991	1	0	0	1
1990	0	0	0	0
1989	2	0	1	1
1988	1	0	1	0
1987	0	0	0	0
1986	0	0	0	0
1985	1	0	1	0
1984	0	0	0	0
1983	0	0	0	0
1982	1	0	1	0

MATERNAL

**Note:**

Prior to 1999, maternal deaths included ICD-9 categories 630-676. For 1999 and later, maternal deaths include ICD-10 categories O00-O99, and A34.

**Source:**

Delaware Health Statistics Center

TABLE F-30  
 FIVE-YEAR AGE-ADJUSTED MORTALITY RATES FOR SELECTED CAUSES OF DEATH  
 DELAWARE AND COUNTIES, 2002-2006

LEADING CAUSE OF DEATH	AREA				RACE	
	DE	Kent	NCC	Sussex	White	Black
Diseases of the heart	222.7	267.9	217.5	210.7	215.5	269.6
Malignant neoplasms	193.9	206.7	193.2	190.5	189.8	225.9
Cerebrovascular diseases	43.9	48.6	47.4	34.2	41.5	59.2
Chronic lower respiratory diseases	40.3	49.7	38.7	38.8	41.6	31.4
Accidents (unintentional injuries)	35.1	40.7	31.7	42.6	37.5	28.9
Diabetes mellitus	24.4	30.6	24.2	21.8	21.3	45.7
Alzheimer's disease	18.4	13.2	18.1	21.6	18.8	14.0
Influenza and pneumonia	16.8	20.0	14.2	20.5	16.8	16.8
Dementia	16.1	14.3	18.6	11.9	15.4	22.4
Nephritis, nephrotic syndrome, and nephrosis	14.8	16.7	14.9	13.5	12.9	27.6
Septicemia	14.2	18.6	14.6	11.5	12.9	22.5
Intentional self-harm (suicide)	10.2	10.4	10.0	10.8	11.8	5.1
Chronic liver disease and cirrhosis	9.1	10.1	8.8	9.2	9.6	7.1
Other diseases of respiratory system	8.9	10.3	8.6	8.4	9.0	6.8
Human immunodeficiency virus (HIV)	7.7	5.3	9.6	3.9	2.3	30.7
Certain conditions originating in the perinatal period	7.5	6.6	8.0	6.5	5.0	14.7
Pneumonitis due to solids and liquids	7.1	5.0	7.4	7.5	6.7	8.7
Essential (primary) hypertension and hypertensive renal disease	6.8	9.1	6.9	5.0	5.6	14.7
Parkinson's disease	5.4	4.6	6.0	4.7	5.8	NA
Aortic aneurysm and dissection	5.0	7.2	4.4	5.3	5.0	5.2
Assault (homicide)	5.0	3.1	5.9	3.3	2.4	13.3
Congenital malformations, deformations, and chromosomal abnormalities	3.1	3.4	2.9	3.7	3.0	3.3

AADR

**Notes:**

1. Rates per 100,000, adjusted to U.S. 2000 population.
2. See Appendix E for ICD-10 Cause of Death Codes.
3. "NA" indicates rate does not meet standards of reliability or precision; based on fewer than 20 deaths in the numerator.

Source:  
 Delaware Health Statistics Center

TABLE F-31  
FIVE-YEAR AGE-ADJUSTED MORTALITY RATES FOR SELECTED CAUSES OF DEATH

DELAWARE AND COUNTIES, 1985-2006

Area/ Year	Diseases of the heart	Malignant neoplasms	Cerebro- vascular diseases	Chronic lower respiratory diseases	Diabetes mellitus	Influenza and pneumonia	Dementia	Alzheimer's Disease	Nephritis, nephrotic syndrome, and nephrosis	Septicemia	Human immuno- deficiency virus (HIV)	Accidents (unintentional injuries)	Intentional self-harm (suicide)	Assault (homicide)
<b>Delaware</b>														
2002-2006	222.7	193.9	43.9	40.3	24.4	16.8	16.1	18.4	14.8	14.2	7.7	35.1	10.2	5.0
2001-2005	235.5	200.2	45.7	40.7	25.9	18.6	12.1	17.9	14.3	15.0	8.2	35.1	10.9	4.5
2000-2004	243.0	201.8	48.6	40.3	25.7	21.0	10.5	16.9	14.4	15.8	8.4	35.8	11.1	3.8
1999-2003	251.3	205.8	50.8	41.1	25.7	22.1	9.4	16.5	14.2	15.9	8.7	35.9	11.1	3.6
1998-2002	256.7	210.2	51.5	42.1	26.3	26.1	8.5	14.6	14.1	15.9	8.2	36.3	10.7	3.7
1997-2001	266.8	217.5	51.5	41.8	26.9	28.7	7.1	13.1	13.5	15.6	8.1	36.8	11.2	3.6
1996-2000	274.7	221.0	51.8	42.4	26.9	30.2	6.5	11.0	13.5	15.2	9.9	36.0	11.0	4.2
1995-1999	283.5	228.1	50.8	41.4	27.9	30.6	5.8	9.4	13.2	14.4	12.5	35.8	11.2	4.7
1994-1998	292.0	231.1	52.0	40.9	28.4	33.1	6.4	7.8	13.3	15.0	14.6	36.4	11.2	4.9
1993-1997	301.5	236.1	52.6	40.4	28.0	32.2	5.9	7.5	12.9	14.6	16.2	36.1	12.0	5.2
1992-1996	306.8	238.9	53.7	40.2	29.0	33.3	5.6	7.3	13.6	14.2	16.5	35.4	12.1	5.4
1991-1995	313.7	240.0	56.3	39.7	29.3	33.9	5.7	7.0	13.6	13.5	14.6	35.7	11.8	5.2
1990-1994	321.8	242.7	57.6	39.8	30.1	33.9	5.3	7.2	13.9	12.8	11.8	35.4	12.0	5.2
1989-1993	331.0	242.5	58.5	39.1	32.4	33.4	4.7	6.6	13.7	11.8	9.0	34.8	12.7	5.8
1988-1992	346.1	242.5	58.8	37.4	31.6	33.1	4.2	6.3	14.5	12.2	6.8	36.2	12.9	5.7
1987-1991	362.6	242.0	58.8	36.8	30.3	30.3	3.8	6.0	14.7	12.3	5.9	37.5	13.5	5.6
1986-1990	376.3	241.6	56.9	36.2	30.4	30.1	3.1	6.0	16.3	12.4	4.4	38.5	13.9	5.3
1985-1989	391.4	239.4	56.8	36.0	29.6	29.0	3.2	5.0	17.4	12.5	2.9	38.2	13.5	5.3
<b>Kent</b>														
2002-2006	267.9	206.7	48.6	49.7	30.6	20.0	14.3	13.2	16.7	18.6	5.3	40.7	10.4	3.1
2001-2005	275.1	213.5	49.4	48.8	30.5	20.4	13.1	14.1	18.3	17.7	5.2	38.9	10.2	---
2000-2004	278.7	211.2	50.4	45.5	27.2	24.8	14.5	12.8	19.9	18.3	5.1	38.3	10.5	---
1999-2003	290.0	217.1	53.5	44.5	27.9	27.2	13.9	12.1	17.9	16.9	5.2	37.6	11.5	---
1998-2002	295.9	218.4	55.6	45.0	28.2	31.6	12.6	10.1	17.6	15.6	4.8	37.7	11.7	---
1997-2001	303.4	221.4	54.9	49.2	27.5	34.0	8.8	8.7	15.3	14.3	5.2	38.9	12.1	---
1996-2000	307.8	220.2	60.5	52.4	28.8	36.4	8.5	5.0	12.4	13.8	5.9	37.5	12.6	---
1995-1999	312.5	228.7	63.4	54.2	31.8	32.9	6.8	4.0	10.8	11.9	8.0	37.8	11.9	---
1994-1998	313.3	222.5	68.9	53.9	31.2	31.5	7.4	---	11.4	12.0	9.4	35.0	11.4	3.4
1993-1997	316.8	222.3	70.0	52.8	32.7	30.2	6.9	---	10.2	11.6	10.5	35.2	11.6	4.1
1992-1996	317.1	230.6	69.2	49.3	32.0	32.4	7.0	4.4	10.2	10.7	11.7	38.0	11.7	5.5
1991-1995	322.2	230.1	66.3	46.3	30.8	32.0	7.2	---	9.8	10.7	11.5	39.6	9.9	6.1
1990-1994	331.8	229.2	68.4	45.7	29.1	34.6	5.6	4.7	8.9	11.3	9.6	38.1	11.0	6.3
1989-1993	335.8	235.8	68.5	43.4	29.6	36.8	5.0	---	7.8	11.9	7.5	41.5	11.2	6.0
1988-1992	353.1	241.2	68.5	42.7	24.7	39.9	NA	---	8.6	11.4	6.3	42.6	10.8	5.5
1987-1991	379.9	245.3	66.9	43.0	24.0	37.7	NA	---	9.0	12.6	5.0	41.0	11.3	4.6
1986-1990	405.7	244.3	67.0	40.9	22.2	40.2	NA	---	11.0	11.8	---	45.4	13.7	4.7
1985-1989	432.1	241.9	64.2	38.9	21.8	40.1	NA	---	11.8	13.6	---	46.4	13.2	4.7

TABLE F-31 (continued)  
New Castle and Sussex Counties, 1985-2006

	Diseases of the heart	Malignant neoplasms	Cerebro-vascular diseases	Chronic lower respiratory diseases	Diabetes mellitus	Influenza and pneumonia	Dementia	Alzheimer's Disease	Nephritis, nephrotic syndrome, and nephrosis	Septicemia	Human immunodeficiency virus (HIV)	Accidents (unintentional injuries)	Intentional self-harm (suicide)	Assault (homicide)
<b>New Castle</b>														
2002-2006	217.5	193.2	47.4	38.7	24.2	14.2	18.6	18.1	14.9	14.6	9.6	31.7	10.0	5.9
2001-2005	231.4	200.5	48.9	39.0	25.9	15.7	13.0	17.9	13.9	15.6	10.4	31.5	11.2	5.3
2000-2004	238.5	201.7	52.0	39.7	25.9	17.6	10.5	17.9	13.7	16.5	10.7	32.2	11.0	4.6
1999-2003	244.8	205.6	53.8	40.3	25.0	19.1	9.2	18.7	13.3	17.0	10.8	33.6	10.7	4.3
1998-2002	250.0	211.9	53.8	41.3	26.1	23.1	8.3	17.3	13.5	17.4	9.9	34.5	9.9	4.6
1997-2001	259.0	219.4	53.6	41.7	27.2	25.1	7.3	15.9	13.7	17.4	9.8	34.5	10.3	4.5
1996-2000	266.8	223.1	53.0	41.5	26.6	27.5	6.3	13.8	14.2	17.4	12.1	33.9	9.8	5.1
1995-1999	276.4	230.5	50.0	39.1	26.6	28.2	5.5	11.7	14.5	16.6	14.9	33.4	10.1	5.3
1994-1998	287.6	235.2	49.8	38.1	27.5	30.7	5.8	9.7	14.5	17.3	17.2	33.4	10.2	5.3
1993-1997	296.8	238.1	49.7	37.2	26.7	30.6	5.0	8.9	14.2	16.9	19.0	32.4	11.3	5.3
1992-1996	303.0	240.1	51.7	35.8	27.1	31.7	4.8	8.3	14.7	16.2	18.8	31.0	11.8	5.2
1991-1995	309.7	242.0	54.0	34.8	27.8	31.3	4.7	7.9	15.1	15.4	16.2	30.7	11.7	4.9
1990-1994	317.6	245.2	56.3	34.8	29.8	31.0	4.6	8.3	15.5	14.5	13.0	30.9	12.0	4.8
1989-1993	328.7	242.1	55.9	34.9	33.3	29.6	4.0	7.6	15.8	13.2	9.9	30.1	12.8	5.5
1988-1992	343.4	243.4	56.2	34.4	33.2	27.9	3.9	7.3	16.2	13.8	7.0	32.1	13.1	5.6
1987-1991	359.2	241.8	56.7	34.3	32.5	25.4	3.5	7.3	16.3	13.5	6.2	32.8	13.7	5.4
1986-1990	371.5	241.6	54.4	34.6	33.9	25.0	3.5	7.8	17.9	13.6	4.6	32.9	13.7	4.9
1985-1989	384.9	238.8	54.3	34.3	33.1	24.2	3.7	6.5	19.4	13.1	2.8	32.0	13.2	5.0
<b>Sussex</b>														
2002-2006	210.7	190.5	34.2	38.8	21.8	20.5	11.9	21.6	13.5	11.5	3.9	42.6	10.8	3.3
2001-2005	224.6	193.7	37.0	39.9	23.7	24.0	9.8	19.9	13.1	12.8	3.7	44.2	10.4	3.6
2000-2004	235.5	197.9	40.7	38.4	24.5	27.0	8.6	17.0	13.1	13.3	4.3	46.5	11.4	---
1999-2003	246.4	201.4	43.0	40.5	26.1	26.4	7.7	13.7	14.3	13.0	5.5	43.1	11.8	---
1998-2002	251.7	203.4	44.3	41.7	26.0	30.2	6.7	10.8	13.7	12.8	5.8	42.2	12.2	---
1997-2001	265.0	212.7	45.0	37.6	25.8	34.4	5.9	9.1	12.2	12.0	5.2	44.0	12.8	---
1996-2000	275.9	217.7	44.1	38.7	26.5	33.2	5.8	8.2	12.7	10.8	5.9	42.1	13.3	2.8
1995-1999	284.5	223.4	45.5	38.9	28.6	35.1	5.9	6.9	11.5	10.9	8.3	42.2	14.0	4.6
1994-1998	290.7	227.5	47.2	39.6	28.9	40.1	7.1	6.3	11.3	11.6	10.0	48.6	14.2	5.0
1993-1997	305.1	241.1	49.5	40.9	28.3	37.9	7.5	6.6	11.1	10.8	11.0	50.8	14.5	5.6
1992-1996	311.3	241.9	49.6	45.9	32.0	38.3	6.7	6.3	12.9	11.2	12.3	49.6	13.8	5.9
1991-1995	320.4	242.3	56.1	48.7	32.7	42.2	7.2	6.1	12.0	10.3	11.8	51.3	14.0	5.9
1990-1994	328.5	245.8	54.3	50.0	31.9	41.5	7.2	6.0	12.9	9.3	9.1	51.1	12.8	5.8
1989-1993	336.8	249.7	59.1	47.8	32.2	41.6	6.4	5.2	12.0	8.3	7.2	46.6	13.6	6.7
1988-1992	351.8	241.3	59.3	42.3	32.0	43.0	4.9	5.4	13.5	8.7	6.8	46.5	13.7	6.3
1987-1991	363.9	241.6	58.8	39.7	28.6	38.9	4.5	5.0	13.8	9.4	5.8	52.8	14.1	7.3
1986-1990	372.0	240.9	57.0	37.1	26.0	37.6	NA	3.6	15.2	9.8	5.4	54.8	14.0	7.3
1985-1989	386.1	239.6	59.4	38.2	25.0	35.2	NA	---	15.4	10.4	4.2	55.3	14.0	6.7

AADR Trend

**Notes:**

1. Rates per 100,000, adjusted to U.S. 2000 population.
2. See Appendix E for ICD-10 Cause of Death Codes.
3. "----" indicates rate does not meet standards of reliability or precision; based on fewer than 20 deaths in the numerator.

Source:  
Delaware Health Statistics Center



TABLE F-32  
FIVE-YEAR AGE-ADJUSTED MORTALITY RATES FOR SELECTED CAUSES OF DEATH BY RACE

DELAWARE, 1985-2006

Race/ Year	Diseases of the heart	Malignant neoplasms	Cerebro- vascular diseases	Chronic lower respiratory diseases	Diabetes mellitus	Influenza and pneumonia	Dementia	Alzheimer's Disease	Nephritis, nephrotic syndrome, and nephrosis	Septicemia	Human immuno- deficiency virus (HIV)	Accidents (unintentional injuries)	Intentional self-harm (suicide)	Assault (homicide)
<b>White</b>														
2002-2006	215.5	189.8	41.5	41.6	21.3	16.8	15.4	18.8	12.9	12.9	2.3	37.5	11.8	2.4
2001-2005	227.7	196.2	43.1	42.0	22.6	18.7	11.8	18.4	12.4	13.7	2.3	37.0	12.5	2.6
2000-2004	235.5	197.3	46.0	41.0	22.0	21.2	10.1	17.3	12.6	14.6	2.5	37.1	12.8	2.1
1999-2003	244.9	200.2	48.5	41.9	22.3	22.5	9.4	17.0	12.1	14.3	2.6	36.9	12.9	2.0
1998-2002	250.8	205.7	49.0	42.9	22.6	26.6	8.5	15.3	11.9	14.4	2.2	37.3	12.2	2.2
1997-2001	261.3	212.1	49.2	42.6	23.4	29.1	7.3	13.8	11.0	13.9	2.0	38.1	12.8	2.2
1996-2000	269.7	213.8	49.1	43.5	23.2	30.3	6.6	11.5	11.2	13.8	3.0	37.2	12.7	2.4
1995-1999	278.6	219.7	48.0	42.5	23.8	30.5	6.1	9.8	11.3	13.0	4.7	36.1	12.7	3.1
1994-1998	286.5	222.9	48.7	42.1	24.5	32.6	6.6	8.2	11.5	13.7	5.9	36.2	12.6	3.2
1993-1997	296.8	225.6	49.2	41.9	24.1	31.3	6.2	8.0	11.4	13.3	7.2	34.8	13.4	3.5
1992-1996	301.5	228.4	50.1	41.6	24.6	32.1	5.8	7.6	12.1	13.1	8.1	33.9	13.5	3.6
1991-1995	309.1	229.7	52.5	41.1	24.7	32.9	6.0	7.4	11.7	12.5	7.7	34.1	13.2	3.7
1990-1994	317.0	232.0	54.1	41.1	25.8	33.2	5.6	7.6	11.6	12.0	6.6	34.6	13.4	3.3
1989-1993	326.1	230.0	55.2	40.0	27.4	32.5	5.1	6.9	11.5	11.3	5.6	34.0	14.2	3.9
1988-1992	340.7	230.6	55.5	38.2	27.0	32.5	4.4	6.5	12.0	11.5	4.5	35.8	14.3	3.7
1987-1991	357.9	229.5	55.1	37.7	26.2	29.8	4.0	6.2	12.3	11.5	3.9	36.8	14.9	3.8
1986-1990	371.2	230.1	53.5	36.6	26.5	29.5	3.3	6.1	14.0	11.5	3.0	37.1	15.3	3.9
1985-1989	387.4	227.9	53.3	36.5	26.3	28.3	3.4	5.2	15.0	11.6	2.0	36.3	14.7	4.0
<b>Black</b>														
2002-2006	269.6	225.9	59.2	31.4	45.7	16.8	22.4	14.0	27.6	22.5	30.7	28.9	5.1	13.3
2001-2005	284.7	232.8	62.6	31.3	49.2	17.7	15.8	13.9	26.6	23.8	33.4	31.3	5.9	11.1
2000-2004	291.0	235.3	65.5	33.5	50.3	19.8	15.0	13.8	26.5	25.0	34.6	34.4	5.5	9.6
1999-2003	292.5	249.6	65.6	33.3	49.8	19.7	10.2	12.5	27.6	28.3	35.7	36.5	4.8	8.8
1998-2002	292.6	249.8	68.9	34.6	53.3	22.7	8.6	9.6	30.1	27.7	35.0	36.9	5.0	8.9
1997-2001	303.5	265.1	68.0	35.4	52.5	25.3	5.7	8.7	31.5	28.5	36.0	35.9	4.8	8.9
1996-2000	310.5	283.7	70.4	35.4	54.9	29.9	6.0	8.2	30.9	25.8	41.8	34.0	4.0	11.6
1995-1999	321.5	302.7	71.0	34.4	58.6	31.7	NA	5.8	28.4	25.7	48.8	36.5	4.9	11.7
1994-1998	329.4	306.3	75.2	33.0	57.5	35.0	NA	---	28.1	25.2	55.5	39.9	5.4	12.4
1993-1997	330.7	326.6	77.5	31.6	56.4	37.8	NA	---	24.7	23.7	59.3	44.5	5.8	12.3
1992-1996	339.0	328.1	81.1	30.8	62.4	40.4	NA	---	24.9	21.9	57.7	44.9	5.8	12.8
1991-1995	340.8	328.2	84.3	30.3	64.5	38.2	NA	---	27.4	21.1	48.8	46.3	5.5	11.7
1990-1994	350.5	332.7	83.3	29.9	63.5	36.9	NA	---	30.6	18.6	37.7	43.8	5.1	13.7
1989-1993	364.1	343.3	83.8	32.2	71.1	39.1	NA	---	29.8	15.5	26.7	41.7	5.2	14.4
1988-1992	385.2	335.5	82.3	31.3	67.4	37.3	NA	---	33.4	16.8	19.2	41.6	6.2	15.0
1987-1991	397.8	341.5	84.8	29.9	61.7	33.2	NA	---	32.6	18.3	16.7	43.9	6.4	14.0
1986-1990	415.8	332.2	81.5	32.1	60.6	33.4	NA	---	33.6	19.5	11.9	48.5	6.9	12.2
1985-1989	422.8	328.9	82.8	31.5	56.1	33.1	NA	---	35.2	20.4	8.2	51.0	7.4	11.3

**Notes:**

1. Rates per 100,000, adjusted to U.S. 2000 population.
2. See Appendix E for ICD-10 Cause of Death Codes.
3. "---" indicates rate does not meet standards of reliability or precision; based on fewer than 20 deaths in the numerator.

Source:  
Delaware Health Statistics Center

AADR Trend\_RC