

Delaware Vital Statistics Annual Report, 2007



Mortality

Photo courtesy of the Delaware Tourism Office

Suggested citation:

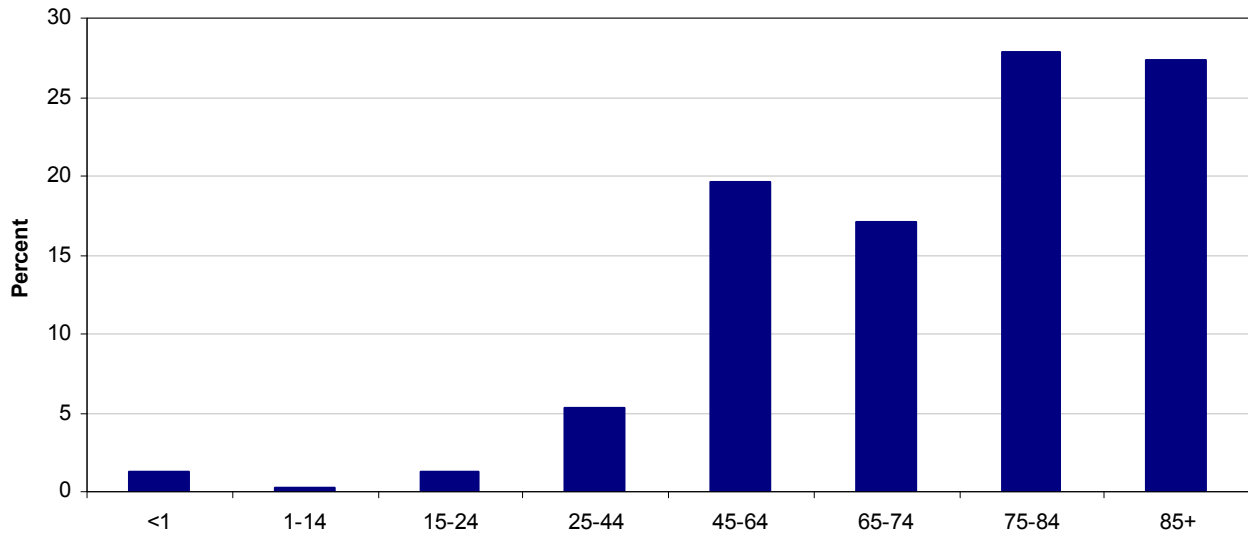
Delaware Health Statistics Center. *Delaware Vital Statistics Annual Report, 2007*.
Delaware Department of Health and Social Services, Division of Public Health: 2010.

MORTALITY

More Delaware residents died in 2007 than in 2006. A total of 7,245 residents died, 90 of which were children under the age of 1. Deaths were split almost equally between males and females. Heart disease and cancer continued to be the leading and second leading causes of death, accounting for 53 percent of all deaths in 2007.

- Just over one quarter of the Delawareans who died in 2007 were 85 or older. Deaths to those 75 and older accounted for more than half of all deaths.

**Percent of Deaths by Age
Delaware, 2007**



Source: Delaware Health Statistics Center

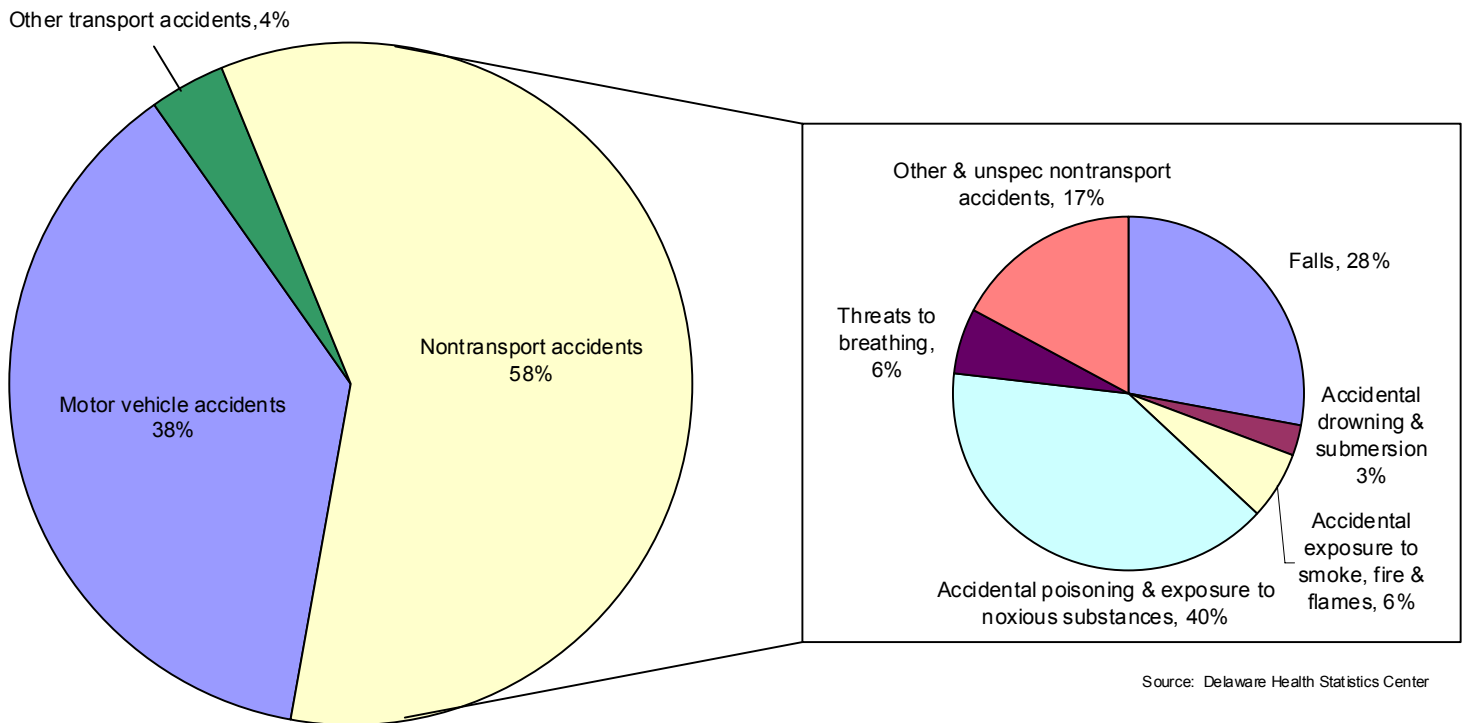
- A Delaware resident born in 2007 could expect to live an average of 78.8 years.
- Life expectancy at birth varied by race and sex; white females had the highest life expectancy (81.9) while black males had the lowest (72.9).
- In 1989, 80 percent of Delaware decedents were buried and 15 percent were cremated, by 2007 those proportions had changed to 58 (burial) and 33 (cremation).
- In 2007, the ten leading causes of death for residents of all ages were almost identical to the top 10 in 2006, with the main difference being movement among the rankings.

Rank	Leading Cause of Death	Number
1	Diseases of heart	1899
2	Malignant neoplasms	1836
3	Chronic lower respiratory diseases	375
4	Cerebrovascular diseases	366
5	Accidents (unintentional injuries)	304
6	Dementia	302
7	Diabetes mellitus	223
8	Alzheimer's disease	200
9	Nephritis, nephrotic syndrome & nephrosis	162
10	Influenza & pneumonia	113

MORTALITY

- There were 304 deaths due to accidents in 2007; 38 percent of which were due to motor vehicle accidents and 58 percent of which were due to non-transport accidents. Forty percent of the 179 non-transport accidents were caused by unintentional poisonings; the majority (94 percent) of unintentional poisonings were drug poisonings.
- Overall, unintentional poisonings were second only to motor vehicle injuries as the leading cause of unintentional injury deaths in 2007.
 - For white females, poisonings caused the most unintentional injuries, followed by motor vehicle accidents. For white males, and blacks of both sexes, motor vehicle accidents caused the most unintentional injuries.

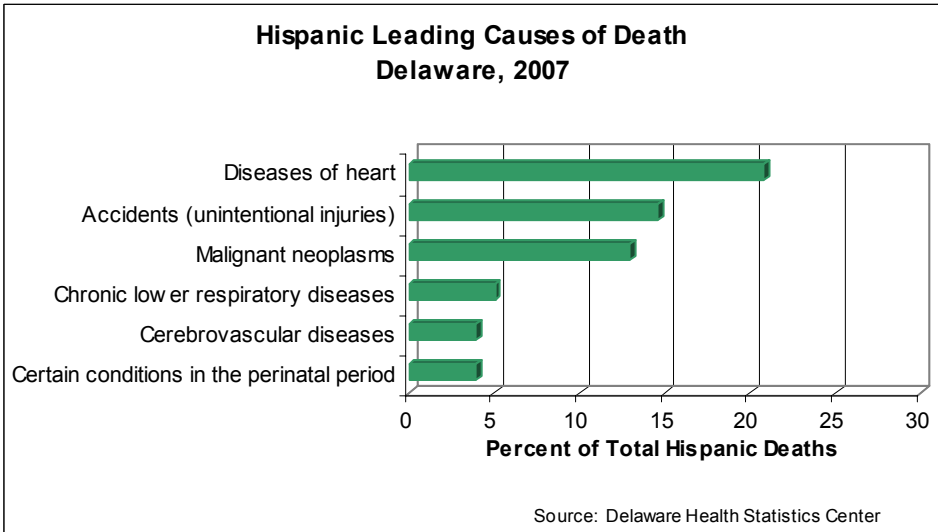
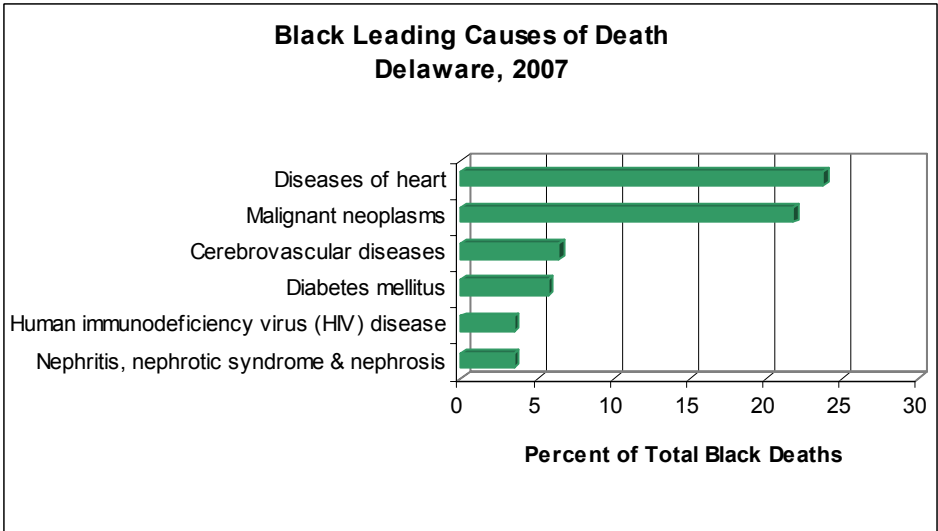
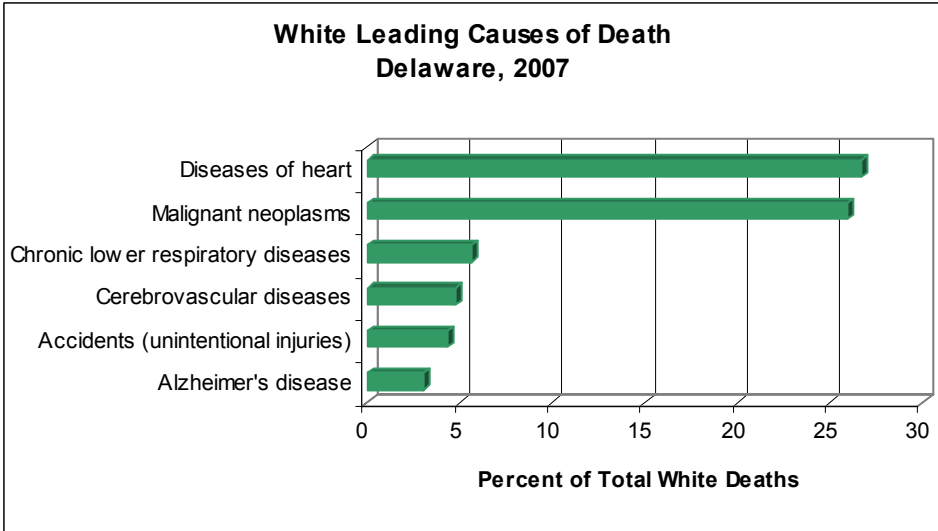
Accidental Causes of Death by Specific Cause of Injury Delaware, 2007



- From 2003-2007, accidents were the number one cause of death for people 1-44 years of age, and were responsible for nearly half of all deaths for people 15-24 years of age. For those ages 15-24, accidents, homicides, and suicides were the three most frequent causes of death (See Table F-11).

MORTALITY

The leading causes of death varied by race and ethnic group. The top five leading causes of death for white, black, and Hispanic Delawareans are shown below.

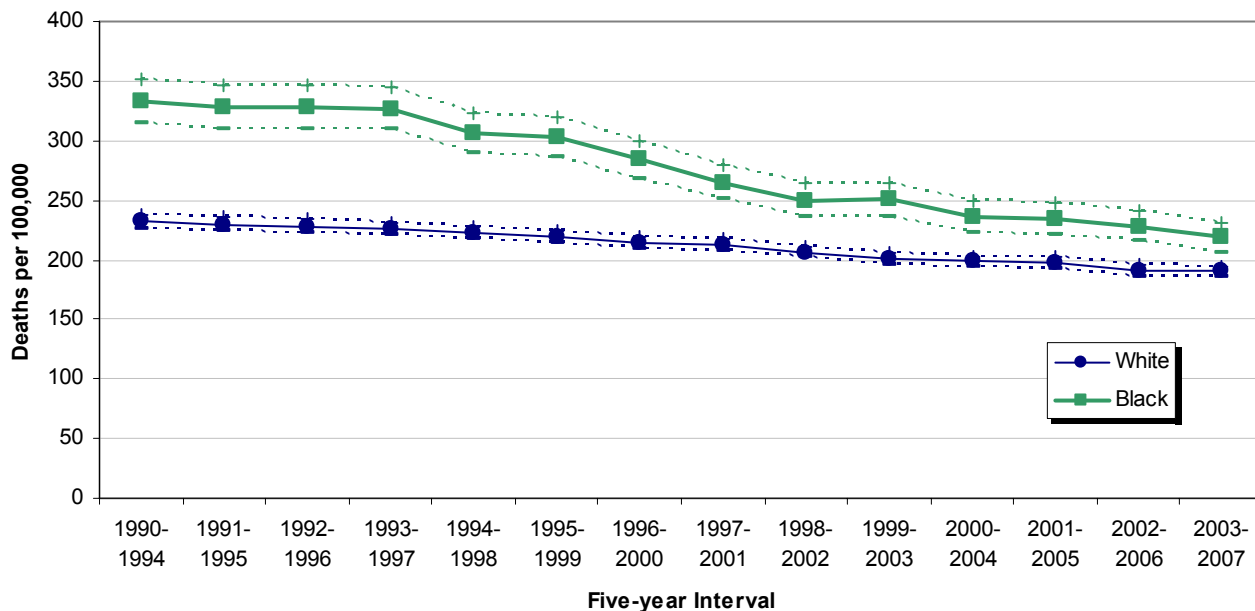


MORTALITY

Cancer mortality rates have been decreasing in all three counties since the early 1990s. In 2003-2007, the 5-year age-adjusted cancer mortality rates ranged from 190.8 in New Castle county to 210.1 deaths per 100,000 population in Kent county. Age-adjusted cancer mortality rates in Kent county and the city of Wilmington were significantly higher than the Delaware rate of 193.3.

Cancer mortality rates for black and white decedents have been decreasing since the early nineties, and while the gap between black and white has been narrowing, black cancer mortality rates in 2003-2007 remained significantly higher than the white rates.

**Five-year Age-Adjusted Cancer Mortality Rates by Race
Delaware, 1990-2007**

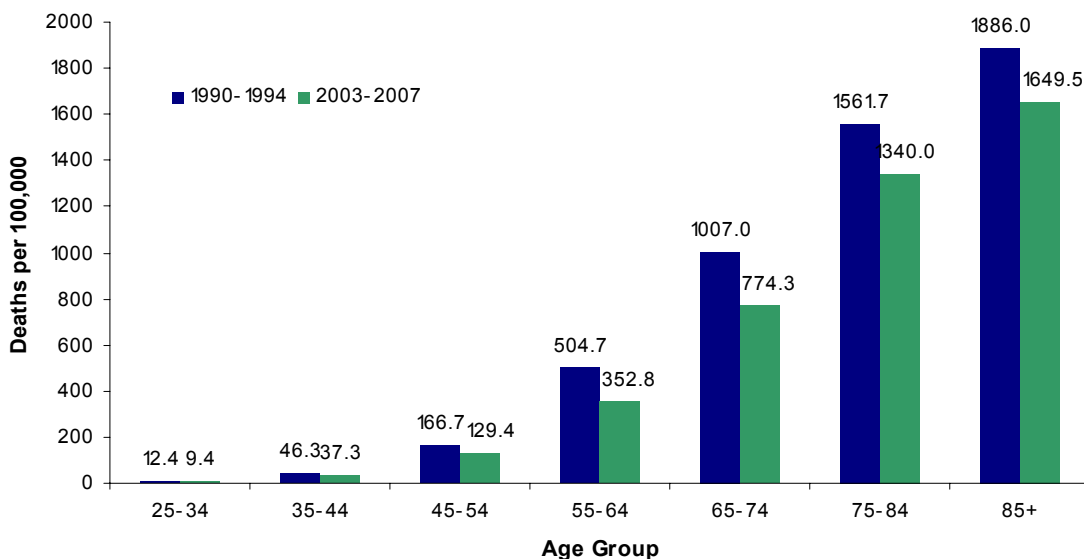


Source: Delaware Health Statistics Center

**Five-year Average Age-Specific Cancer Mortality Rates
Delaware, 1990-1994 and 2003-2007**

The same decreases seen in the age-adjusted mortality rates of both blacks and whites were reflected in the age-specific rates as well.

Cancer mortality rates for all age groups 25 and higher declined between 1990-1994 and 2003-2007. The 55-64 age group experienced the largest decrease.

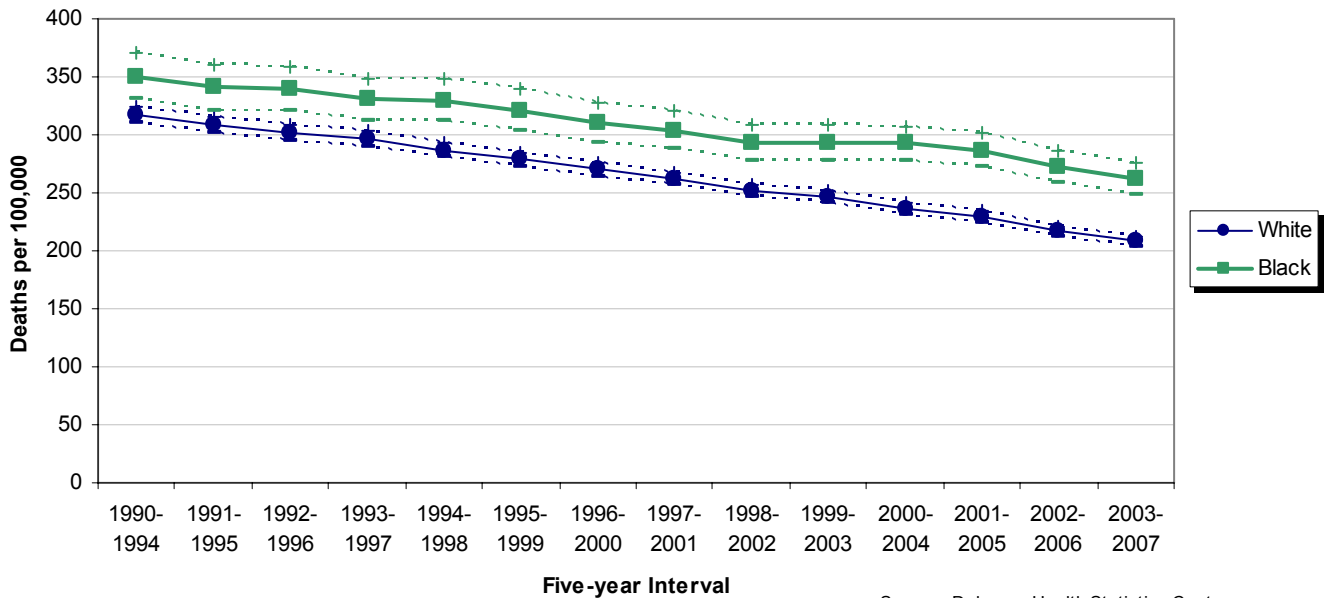


Source: Delaware Health Statistics Center

MORTALITY

Heart disease remained the most common cause of death for both black and white Delawareans in 2003-2007. Both black and white heart disease mortality rates have declined significantly since 1990-1994, with white rates declining more (34 versus 25 percent) and creating a wider disparity between black and white rates.

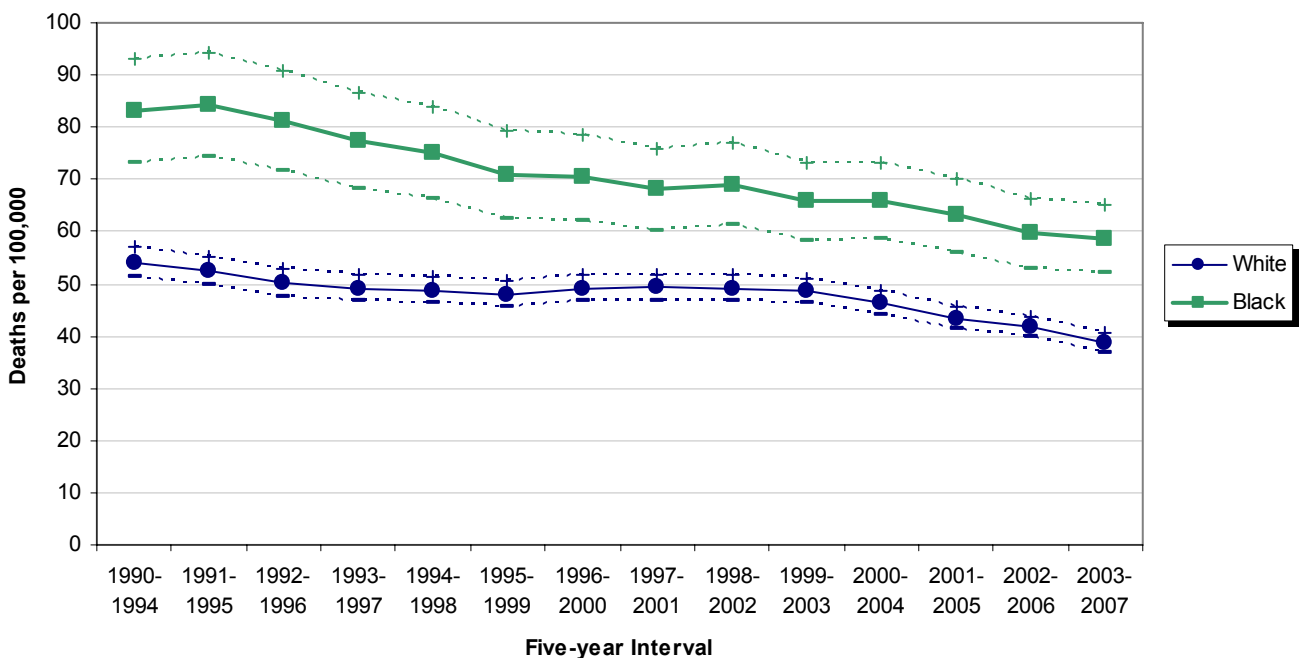
**Five-year Age-Adjusted Heart Disease Mortality Rates by Race
Delaware, 1990-2007**



Source: Delaware Health Statistics Center

Stroke mortality rates for both races continued their downward trends, with white rates declining 28 percent and black rates declining 30 percent between 1990-1994 and 2003-2007. Due to the similar decreases in their rates, black rates in 2003-2007 remained approximately 50 percent higher than white rates.

**Five-year Age-Adjusted Stroke Mortality Rates by Race
Delaware, 1990-2007**

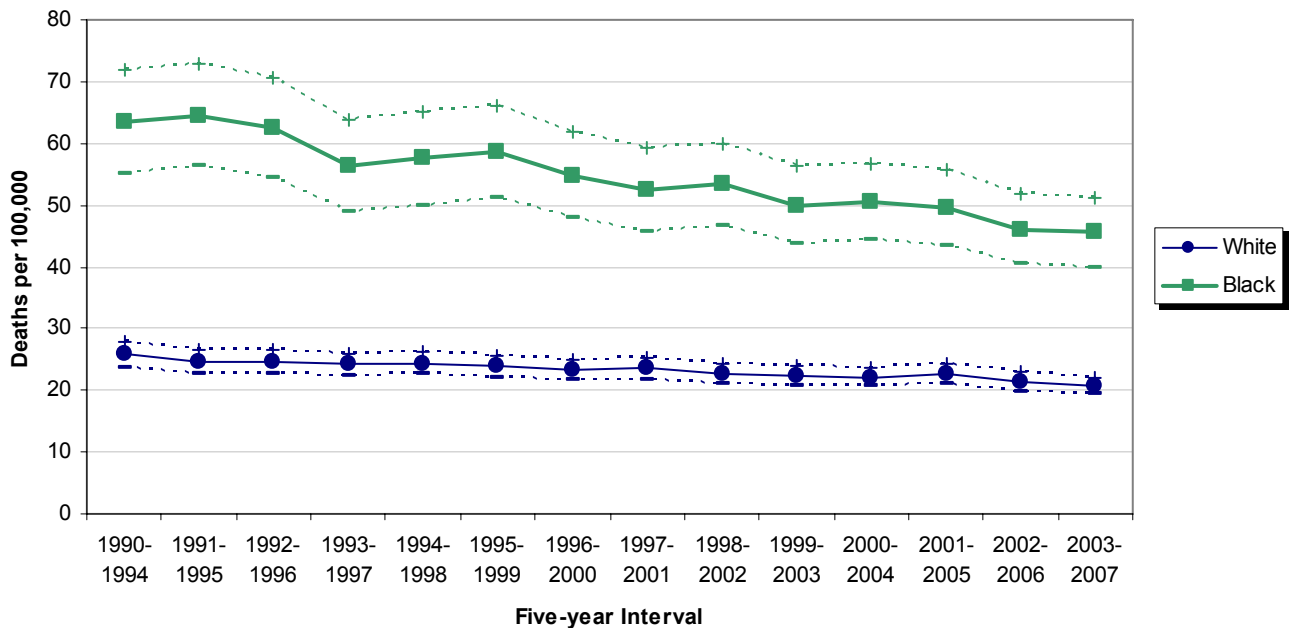


Source: Delaware Health Statistics Center

MORTALITY

Though black mortality rates for Diabetes have been declining since 1990-1994, they remained more than twice that of whites in 2003-2007.

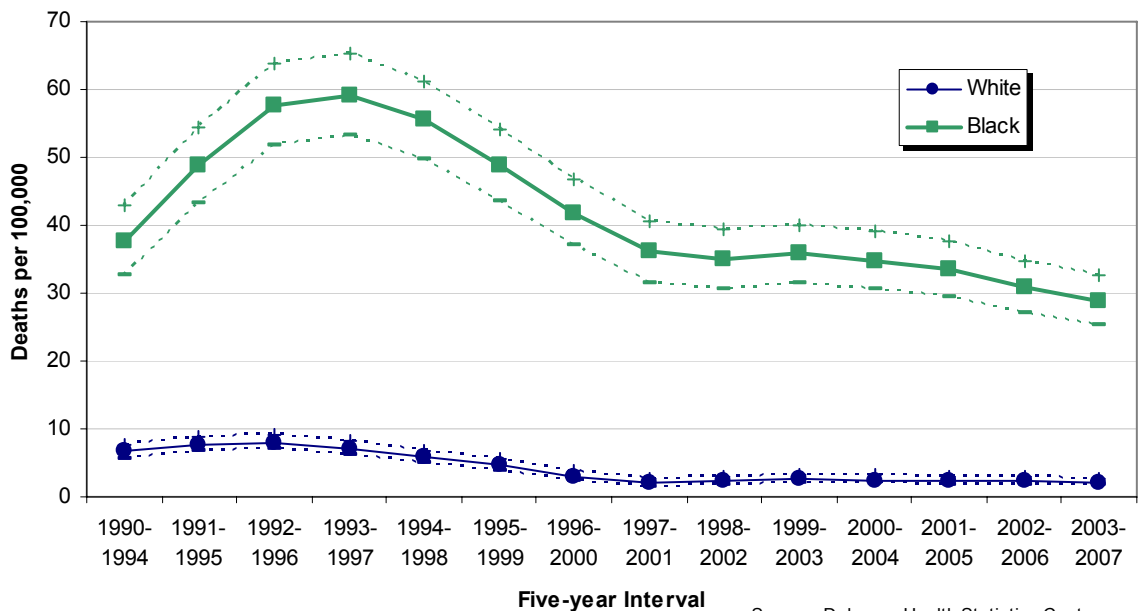
**Five-year Age-Adjusted Diabetes Mortality Rates by Race
Delaware, 1990-2007**



Source: Delaware Health Statistics Center

HIV/AIDS mortality has disproportionately affected Delaware's black population. Despite black HIV/AIDS mortality rates decreasing significantly since the 1993-1997 peak, their 2003-2007 mortality rate of 28.9 deaths per 100,000 was 13 times that of whites. Though they made up only 21 percent of the total Delaware population in 2003-2007, blacks accounted for 78 percent of all deaths due to HIV/AIDS.

**Five-year Age-Adjusted HIV/AIDS Mortality Rates by Race
Delaware, 1990-2007**



Source: Delaware Health Statistics Center

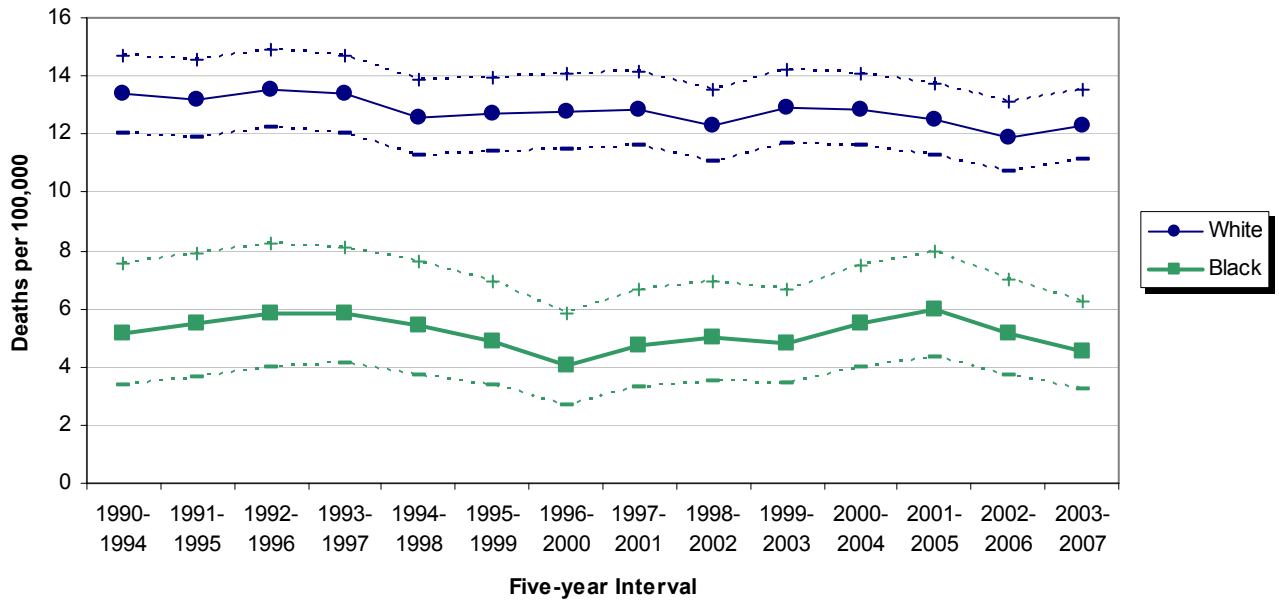
In 2003-2007, HIV was the fifth leading cause of death for black Delawareans; it ranked fourth for black males and fifth for black females.

For black males ages 25-44, it was the fourth most common cause of death, and for black females 25-44 it was the most common cause of death.

MORTALITY

Suicide mortality trends for both black and white populations remained fairly stable from 1990-1994 to 2003-2007, with the white rate (12.3) more than double that of the black rate (4.5).

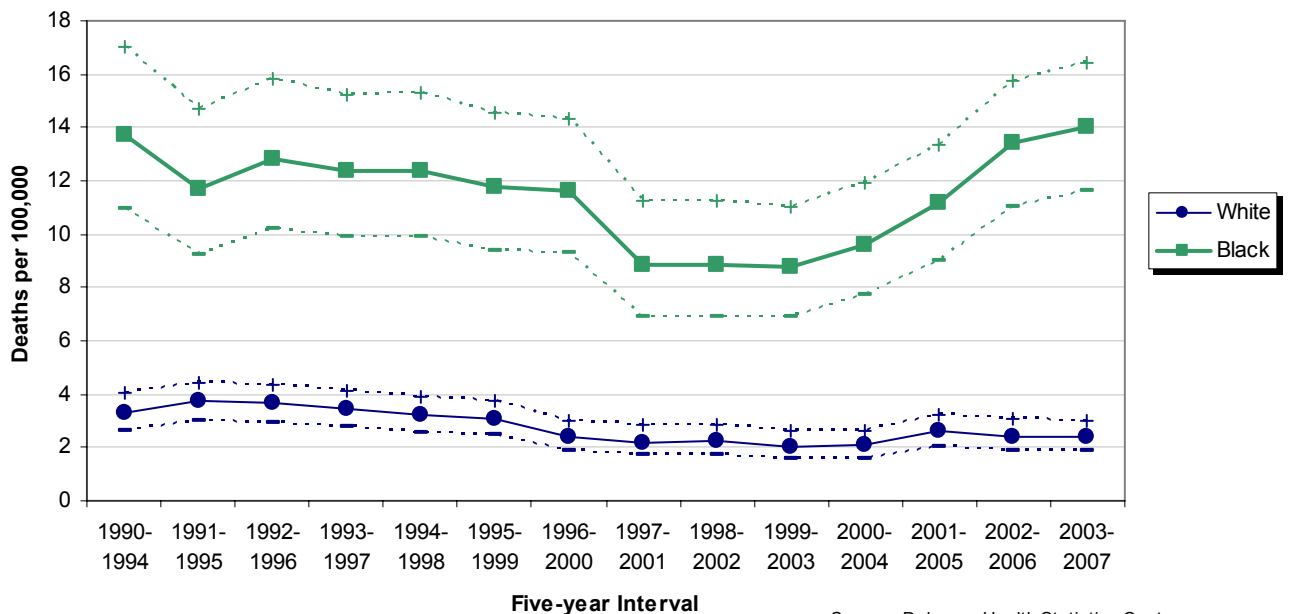
**Five-year Age-Adjusted Suicide Mortality Rates by Race
Delaware, 1990-2007**



Source: Delaware Health Statistics Center

Black and white homicide mortality rates declined throughout most of the 90s, reaching their lowest point in 1999-2003. Since then, black rates have risen steadily, and by 2003-2007 they were 60 percent higher. Though white rates had risen as well, the increase was not significant and their most recent trend has been stable. As a result, the 2003-2007 homicide mortality rate for blacks (14) was nearly 6 times that of whites (2.4).

**Five-year Age-Adjusted Homicide Mortality Rates by Race
Delaware, 1990-2007**

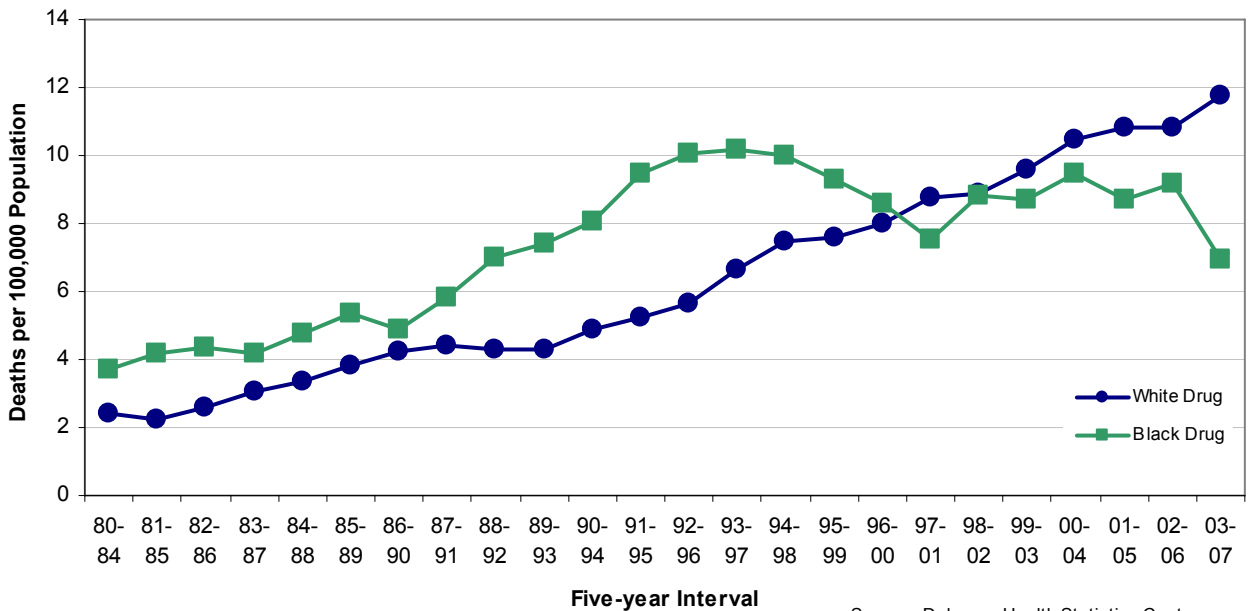


Source: Delaware Health Statistics Center

MORTALITY

Though black mortality rates for drug-induced deaths were historically higher than white rates, in 1994-1998 they began a four year decline that moved them just below white rates in 1997-2001. Since then, white mortality rates have remained higher, and in 2003-2007 the white rate (11.7) was 70 percent higher than the black rate (6.9).

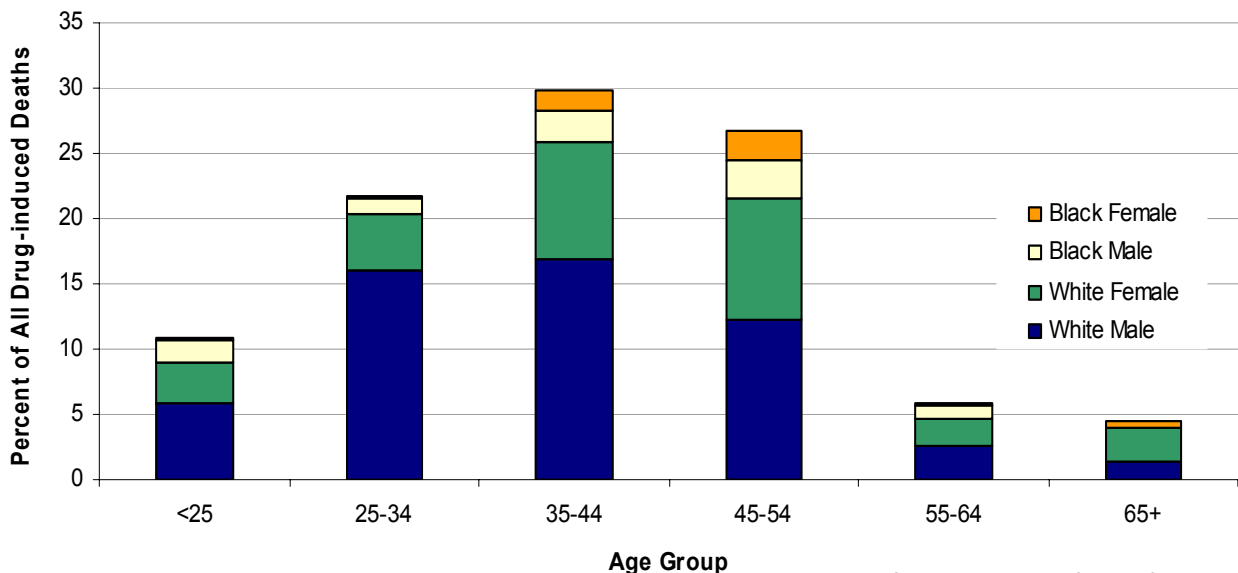
**Five-year Age-adjusted Mortality Rates for Drug-Induced Deaths by Race
Delaware, 1980-2007**



Source: Delaware Health Statistics Center

Over half (56 percent) of all drug-induced deaths in 2003-2007 were white males. Of all the race-age groups, white males ages 35-44 were responsible for the single largest proportion (17 percent) of drug-induced deaths.

**Distribution of Drug-induced Deaths by Race, Sex, and Age Group
Delaware 2003-2007**



Source: Delaware Health Statistics Center

TABLE F-1
NUMBER OF DEATHS BY RACE

U.S., DELAWARE, COUNTIES AND CITY OF WILMINGTON, 1994-2007

Area/ Race	1994	1995	1996	1997	1998	1999	2000	2001	2002	2003	2004	2005	2006	2007
U.S.														
All Races	2278994	2312132	2314690	2314245	2337256	2391399	2403351	2416425	2443387	2448288	2397615	2448017	2426264	2423995
White	1959875	1987437	1992966	1996393	2015984	2061348	2071287	2079691	2102589	2103714	2056643	2098097	2077549	2079424
Black	282379	286401	282089	276520	278440	285064	285826	287709	290051	291300	287315	292808	289971	285118
Other	36740	38294	39635	41332	42832	44987	46238	49025	50747	53274	53657	57112	58744	59453
Delaware														
All Races	6337	6281	6506	6510	6577	6669	6872	7114	6860	7067	7124	7422	7144	7245
White	5259	5124	5295	5449	5453	5555	5696	5886	5694	5782	5862	6127	5856	5985
Black	1038	1108	1166	1014	1086	1072	1131	1180	1111	1241	1204	1235	1225	1180
Other	40	49	45	47	38	42	45	48	55	44	58	60	63	80
Kent														
All Races	941	966	1003	998	1015	1102	1022	1102	1113	1114	1154	1250	1219	1255
White	778	790	813	837	835	924	822	900	916	878	948	1017	967	1018
Black	152	169	183	147	173	167	184	194	187	224	193	224	234	219
Other	11	7	7	14	7	11	16	8	10	12	13	9	18	18
New Castle														
All Races	3910	3796	3967	3951	4030	3931	4111	4234	3996	4129	4146	4227	4039	4100
White	3196	3030	3201	3250	3281	3217	3350	3435	3244	3299	3324	3379	3212	3294
Black	696	744	749	677	731	692	741	774	718	809	793	809	794	770
Other	18	22	17	24	18	22	20	25	34	21	29	39	33	36
Wilmington														
All Races	955	944	890	864	850	789	826	850	779	843	782	763	728	705
White	511	448	436	479	423	395	430	421	392	413	358	360	337	345
Black	443	492	453	383	425	392	394	425	380	430	419	401	385	359
Other	1	4	1	2	2	2	2	4	7	0	5	2	6	1
Balance of NC County														
All Races	2955	2852	3077	3087	3180	3142	3285	3384	3217	3286	3364	3464	3311	3395
White	2685	2582	2765	2771	2858	2822	2920	3014	2852	2886	2966	3019	2875	2949
Black	253	252	296	294	306	300	347	349	338	379	374	408	409	411
Other	17	18	16	22	16	20	18	21	27	21	24	37	27	35
Sussex														
All Races	1486	1519	1536	1561	1532	1636	1739	1778	1751	1824	1824	1945	1886	1890
White	1285	1304	1281	1362	1337	1414	1524	1551	1534	1605	1590	1731	1677	1673
Black	190	195	234	190	182	213	206	212	206	208	218	202	197	191
Other	11	20	21	9	13	9	9	15	11	11	16	12	12	26

Note:
2007 US data are preliminary numbers from NCHS.

NDRACE

Sources:
Delaware Health Statistics Center
National Center for Health Statistics

TABLE F-2
NUMBER OF DEATHS BY AGE, RACE, AND HISPANIC ORIGIN
DELAWARE, COUNTIES AND CITY OF WILMINGTON, 2007

Area/ Age	Race									Hispanic Origin ²
	All Races	White	Black	American Indian ¹	Asian or Pacific Islander (API)				All Other	
					Chinese	Japanese	Filipino	Other API		
Delaware	7245	5985	1180	27	9	2	9	28	5	178
<1	90	52	37	0	0	0	0	1	0	19
1-4	7	4	2	0	0	0	0	1	0	0
5-14	8	6	1	0	0	0	0	1	0	0
15-24	88	55	30	0	1	0	0	2	0	8
25-34	105	77	23	0	1	0	1	3	0	15
35-44	280	199	77	2	0	0	0	1	1	19
45-54	585	420	162	1	0	0	1	1	0	20
55-64	833	646	178	1	1	0	0	6	1	20
65-74	1238	988	229	10	1	1	3	6	0	24
75+	4007	3536	439	13	5	1	4	6	3	53
Unknown	4	2	2	0	0	0	0	0	0	0
Kent	1255	1018	219	9	0	1	3	5	0	31
<1	9	4	4	0	0	0	0	1	0	0
1-4	2	1	1	0	0	0	0	0	0	0
5-14	1	0	1	0	0	0	0	0	0	0
15-24	15	10	5	0	0	0	0	0	0	0
25-34	19	12	5	0	0	0	1	1	0	0
35-44	48	29	19	0	0	0	0	0	0	1
45-54	110	76	33	0	0	0	0	1	0	5
55-64	161	128	32	1	0	0	0	0	0	7
65-74	231	178	44	5	0	1	2	1	0	5
75+	657	579	74	3	0	0	0	1	0	13
Unknown	2	1	1	0	0	0	0	0	0	0
New Castle	4100	3294	770	2	8	1	4	19	2	116
<1	59	33	26	0	0	0	0	0	0	14
1-4	3	1	1	0	0	0	0	1	0	0
5-14	6	5	0	0	0	0	0	1	0	0
15-24	52	29	21	0	1	0	0	1	0	6
25-34	68	48	17	0	1	0	0	2	0	10
35-44	163	116	46	1	0	0	0	0	0	13
45-54	349	240	108	0	0	0	1	0	0	13
55-64	462	331	124	0	1	0	0	5	1	12
65-74	644	489	148	1	1	0	0	5	0	17
75+	2292	2001	278	0	4	1	3	4	1	31
Unknown	2	1	1	0	0	0	0	0	0	0
Wilmington	705	345	359	0	0	0	0	1	0	34
<1	17	3	14	0	0	0	0	0	0	2
1-4	1	0	1	0	0	0	0	0	0	0
5-14	0	0	0	0	0	0	0	0	0	0
15-24	10	3	7	0	0	0	0	0	0	1
25-34	12	4	8	0	0	0	0	0	0	3
35-44	29	8	21	0	0	0	0	0	0	4
45-54	70	23	47	0	0	0	0	0	0	2
55-64	73	24	49	0	0	0	0	0	0	3
65-74	114	47	67	0	0	0	0	0	0	8
75+	378	233	144	0	0	0	0	1	0	11
Unknown	1	0	1	0	0	0	0	0	0	0
Balance of NC County	3395	2949	411	2	8	1	4	18	2	82
<1	42	30	12	0	0	0	0	0	0	12
1-4	2	1	0	0	0	0	0	1	0	0
5-14	6	5	0	0	0	0	0	1	0	0
15-24	42	26	14	0	1	0	0	1	0	5
25-34	56	44	9	0	1	0	0	2	0	7
35-44	134	108	25	1	0	0	0	0	0	9
45-54	279	217	61	0	0	0	1	0	0	11
55-64	389	307	75	0	1	0	0	5	1	9
65-74	530	442	81	1	1	0	0	5	0	9
75+	1914	1768	134	0	4	1	3	3	1	20
Unknown	1	1	0	0	0	0	0	0	0	0
Sussex	1890	1673	191	16	1	0	2	4	3	31
<1	22	15	7	0	0	0	0	0	0	5
1-4	2	2	0	0	0	0	0	0	0	0
5-14	1	1	0	0	0	0	0	0	0	0
15-24	21	16	4	0	0	0	0	1	0	2
25-34	18	17	1	0	0	0	0	0	0	5
35-44	69	54	12	1	0	0	0	1	1	5
45-54	126	104	21	1	0	0	0	0	0	2
55-64	210	187	22	0	0	0	0	1	0	1
65-74	363	321	37	4	0	0	1	0	0	2
75+	1058	956	87	10	1	0	1	1	2	9
Unknown	0	0	0	0	0	0	0	0	0	0

Notes:

1. Includes any deaths that may have occurred to Aleut and Eskimo Indians.
2. People of Hispanic origin may be of any race. See *Hispanic Origin* and *Race* in the Technical Notes.

Source:

Delaware Health Statistics Center

DETRACE

TABLE F-3
NUMBER OF DEATHS BY AGE AND RACE
DELAWARE, COUNTIES AND CITY OF WILMINGTON, 2007

(BOTH SEXES)

Area/ Race	Age of Decedent													
	Total	< 1	1-4	5-9	10-14	15-19	20-24	25-34	35-44	45-54	55-64	65-74	75+	Unk
Delaware														
All Races	7245	90	7	2	6	34	54	105	280	585	833	1238	4007	4
White	5985	52	4	2	4	23	32	77	199	420	646	988	3536	2
Black	1180	37	2	0	1	10	20	23	77	162	178	229	439	2
Other	80	1	1	0	1	1	2	5	4	3	9	21	32	0
Kent														
All Races	1255	9	2	0	1	5	10	19	48	110	161	231	657	2
White	1018	4	1	0	0	3	7	12	29	76	128	178	579	1
Black	219	4	1	0	1	2	3	5	19	33	32	44	74	1
Other	18	1	0	0	0	0	0	2	0	1	1	9	4	0
New Castle														
All Races	4100	59	3	1	5	18	34	68	163	349	462	644	2292	2
White	3294	33	1	1	4	12	17	48	116	240	331	489	2001	1
Black	770	26	1	0	0	6	15	17	46	108	124	148	278	1
Other	36	0	1	0	1	0	2	3	1	1	7	7	13	0
Wilmington														
All Races	705	17	1	0	0	1	9	12	29	70	73	114	378	1
White	345	3	0	0	0	0	3	4	8	23	24	47	233	0
Black	359	14	1	0	0	1	6	8	21	47	49	67	144	1
Other	1	0	0	0	0	0	0	0	0	0	0	0	1	0
Balance of NC County														
All Races	3395	42	2	1	5	17	25	56	134	279	389	530	1914	1
White	2949	30	1	1	4	12	14	44	108	217	307	442	1768	1
Black	411	12	0	0	0	5	9	9	25	61	75	81	134	0
Other	35	0	1	0	1	0	2	3	1	1	7	7	12	0
Sussex														
All Races	1890	22	2	1	0	11	10	18	69	126	210	363	1058	0
White	1673	15	2	1	0	8	8	17	54	104	187	321	956	0
Black	191	7	0	0	0	2	2	1	12	21	22	37	87	0
Other	26	0	0	0	0	1	0	0	3	1	1	5	15	0

Source:
Delaware Health Statistics Center

NDAGERAC

TABLE F-4
NUMBER OF DEATHS BY AGE AND RACE
DELAWARE, COUNTIES AND CITY OF WILMINGTON, 2007

(MALES)

Area/ Race	Age of Decedent													
	Total	< 1	1-4	5-9	10-14	15-19	20-24	25-34	35-44	45-54	55-64	65-74	75+	Unk
Delaware														
All Races	3632	48	4	1	6	25	42	76	170	364	521	706	1667	2
White	2978	27	2	1	4	14	25	59	127	272	408	561	1477	1
Black	606	20	1	0	1	10	15	14	40	91	107	132	174	1
Other	48	1	1	0	1	1	2	3	3	1	6	13	16	0
Kent														
All Races	636	6	1	0	1	3	9	13	28	68	105	133	269	0
White	523	2	1	0	0	1	6	10	20	52	86	104	241	0
Black	106	3	0	0	1	2	3	2	8	16	18	27	26	0
Other	7	1	0	0	0	0	0	1	0	0	1	2	2	0
New Castle														
All Races	2030	29	2	0	5	13	25	50	95	220	287	360	942	2
White	1608	16	0	0	4	7	12	36	70	156	206	276	824	1
Black	397	13	1	0	0	6	11	12	24	64	76	78	111	1
Other	25	0	1	0	1	0	2	2	1	0	5	6	7	0
Wilmington														
All Races	307	8	1	0	0	1	6	9	15	40	45	54	127	1
White	127	1	0	0	0	0	2	3	4	14	15	20	68	0
Black	180	7	1	0	0	1	4	6	11	26	30	34	59	1
Other	0	0	0	0	0	0	0	0	0	0	0	0	0	0
Balance of NC County														
All Races	1723	21	1	0	5	12	19	41	80	180	242	306	815	1
White	1481	15	0	0	4	7	10	33	66	142	191	256	756	1
Black	217	6	0	0	0	5	7	6	13	38	46	44	52	0
Other	25	0	1	0	1	0	2	2	1	0	5	6	7	0
Sussex														
All Races	966	13	1	1	0	9	8	13	47	76	129	213	456	0
White	847	9	1	1	0	6	7	13	37	64	116	181	412	0
Black	103	4	0	0	0	2	1	0	8	11	13	27	37	0
Other	16	0	0	0	0	1	0	0	2	1	0	5	7	0

Source:
Delaware Health Statistics Center

NDRCAGML

TABLE F-5
NUMBER OF DEATHS BY AGE AND RACE
DELAWARE, COUNTIES AND CITY OF WILMINGTON, 2007

(FEMALES)

Area/ Race	Age of Decedent													
	Total	< 1	1-4	5-9	10-14	15-19	20-24	25-34	35-44	45-54	55-64	65-74	75+	Unk
Delaware														
All Races	3613	42	3	1	0	9	12	29	110	221	312	532	2340	2
White	3007	25	2	1	0	9	7	18	72	148	238	427	2059	1
Black	574	17	1	0	0	0	5	9	37	71	71	97	265	1
Other	32	0	0	0	0	0	0	2	1	2	3	8	16	0
Kent														
All Races	619	3	1	0	0	2	1	6	20	42	56	98	388	2
White	495	2	0	0	0	2	1	2	9	24	42	74	338	1
Black	113	1	1	0	0	0	0	3	11	17	14	17	48	1
Other	11	0	0	0	0	0	0	1	0	1	0	7	2	0
New Castle														
All Races	2070	30	1	1	0	5	9	18	68	129	175	284	1350	0
White	1686	17	1	1	0	5	5	12	46	84	125	213	1177	0
Black	373	13	0	0	0	0	4	5	22	44	48	70	167	0
Other	11	0	0	0	0	0	0	1	0	1	2	1	6	0
Wilmington														
All Races	398	9	0	0	0	0	3	3	14	30	28	60	251	0
White	218	2	0	0	0	0	1	1	4	9	9	27	165	0
Black	179	7	0	0	0	0	2	2	10	21	19	33	85	0
Other	1	0	0	0	0	0	0	0	0	0	0	0	1	0
Balance of NC County														
All Races	1672	21	1	1	0	5	6	15	54	99	147	224	1099	0
White	1468	15	1	1	0	5	4	11	42	75	116	186	1012	0
Black	194	6	0	0	0	0	2	3	12	23	29	37	82	0
Other	10	0	0	0	0	0	0	1	0	1	2	1	5	0
Sussex														
All Races	924	9	1	0	0	2	2	5	22	50	81	150	602	0
White	826	6	1	0	0	2	1	4	17	40	71	140	544	0
Black	88	3	0	0	0	0	1	1	4	10	9	10	50	0
Other	10	0	0	0	0	0	0	0	1	0	1	0	8	0

Source:
Delaware Health Statistics Center

NDRCAGFE

TABLE F-6
MORTALITY TRENDS BY RACE, ETHNICITY, GENDER, AND AGE
DELAWARE, 1997-2007

CHARACTERISTIC	Year										
	1997	1998	1999	2000	2001	2002	2003	2004	2005	2006	2007
Resident Deaths											
Number	6510	6577	6669	6872	7114	6860	7067	7124	7422	7144	7245
Crude Rate	866.3	861.6	860.5	873.8	894.4	851.4	864.1	858.2	881.7	837.8	837.8
AADR ²	914.3	899.9	886.2	884.8	894.1	838.3	834.4	812.5	816.0	762.5	745.6
Decedent's Race/Ethnicity											
White											
Number	5449	5453	5555	5696	5886	5694	5782	5862	6127	5856	5985
Percent	83.7%	82.9%	83.3%	82.9%	82.7%	83.0%	81.8%	82.3%	82.6%	82.0%	82.6%
AADR ²	887.3	866.9	859.9	853.9	862.0	812.3	797.3	784.1	790.2	737.7	728.4
Black											
Number	1014	1086	1072	1131	1180	1111	1241	1204	1235	1225	1180
Percent	15.6%	16.5%	16.1%	16.5%	16.6%	16.2%	17.6%	16.9%	16.6%	17.1%	16.3%
AADR ²	1102.0	1145.2	1078.5	1089.9	1090.1	1004.1	1078.3	1023.4	998.4	921.9	867.3
Hispanic¹											
Number	72	72	93	101	90	95	105	121	119	126	178
Percent	1.1%	1.1%	1.4%	1.5%	1.3%	1.4%	1.5%	1.7%	1.6%	1.8%	2.5%
AADR ²	622.2	612.4	683.9	762.4	612.7	622.7	594.1	688.5	578.4	485.1	749.9
Decedent's Gender											
Female											
Number	3292	3284	3326	3503	3663	3486	3559	3517	3744	3590	3613
Percent	50.6%	49.9%	49.9%	51.0%	51.5%	50.8%	50.4%	49.4%	50.4%	50.3%	49.9%
AADR ²	770.7	748.7	736.4	752.4	772.7	713.5	704.5	677.3	691.4	646.1	626.6
Male											
Number	3218	3293	3343	3369	3451	3374	3508	3607	3678	3554	3632
Percent	49.4%	50.1%	50.1%	49.0%	48.5%	49.2%	49.6%	50.6%	49.6%	49.7%	50.1%
AADR ²	1112.3	1115.3	1095.6	1058.4	1059.5	1002.9	997.3	996.3	976.0	907.6	892.5
Decedent's age											
<1											
Number	81	103	81	102	114	96	107	97	104	99	90
Percent	1.2%	1.6%	1.2%	1.5%	1.6%	1.4%	1.5%	1.4%	1.4%	1.4%	1.2%
1-14											
Number	35	32	31	41	31	39	22	44	26	20	15
Percent	0.5%	0.5%	0.5%	0.6%	0.4%	0.6%	0.3%	0.6%	0.4%	0.3%	0.2%
15-24											
Number	71	70	61	85	86	85	101	97	78	92	88
Percent	1.1%	1.1%	0.9%	1.2%	1.2%	1.2%	1.4%	1.4%	1.1%	1.3%	1.2%
25-44											
Number	430	399	408	426	427	403	389	387	375	427	385
Percent	6.6%	6.1%	6.1%	6.2%	6.0%	5.9%	5.5%	5.4%	5.1%	6.0%	5.3%
45-64											
Number	1121	1125	1101	1168	1276	1214	1327	1338	1406	1410	1418
Percent	17.2%	17.1%	16.5%	17.0%	17.9%	17.7%	18.8%	18.8%	18.9%	19.7%	19.6%
65-74											
Number	1447	1363	1452	1332	1339	1276	1244	1310	1272	1232	1238
Percent	22.2%	20.7%	21.8%	19.4%	18.8%	18.6%	17.6%	18.4%	17.1%	17.2%	17.1%
75-84											
Number	1881	2018	1989	1991	2139	2061	2096	2039	2160	1960	2022
Percent	28.9%	30.7%	29.8%	29.0%	30.1%	30.0%	29.7%	28.6%	29.1%	27.4%	27.9%
85+											
Number	1444	1467	1546	1727	1702	1686	1781	1812	2001	1904	1985
Percent	22.2%	22.3%	23.2%	25.1%	23.9%	24.6%	25.2%	25.4%	27.0%	26.7%	27.4%

Notes:

- Hispanic population numbers used in rate calculations are based on U.S. Census estimates. Because of the small numbers of Hispanic deaths and the resulting variability in annual mortality rates, Hispanic mortality rates should be interpreted with caution.
- Age-Adjusted Death Rate per 100,000, adjusted to 2000 U.S. Standard Population.
- Figures for decedent's age will not equal total number of deaths due to 4 deaths of unknown age.

Sources:

Delaware Health Statistics Center

MORTREND

TABLE F-7
NUMBER OF DEATHS AND MEDIAN AGE AT DEATH BY SEX
FOR TWENTY LEADING CAUSES, ALCOHOL-INDUCED DEATHS, AND DRUG-INDUCED DEATHS
DELAWARE, 2007

Cause of Death ¹	Deaths		Median Age at Death	
	Number	Percent	Male	Female
All causes	7,245	100.0	73	80
Diseases of heart	1,899	26.2	75	84
Malignant neoplasms	1,836	25.3	72	73
Chronic lower respiratory diseases	375	5.2	77	78
Cerebrovascular diseases	366	5.1	74	84
Accidents (unintentional injuries)	304	4.2	43	62
Dementia	302	4.2	85	89
Diabetes mellitus	223	3.1	74	78
Alzheimer's disease	200	2.8	86	88
Nephritis, nephrotic syndrome & nephrosis	162	2.2	79	82
Influenza & pneumonia	113	1.6	84	86
Septicemia	112	1.5	76	77
Intentional self-harm (suicide)	92	1.3	48	45
Other diseases of respiratory system	79	1.1	73	79
Chronic liver disease & cirrhosis	69	1.0	53	57
Other diseases of circulatory system	60	0.8	79	80
Parkinson's disease	55	0.8	79	86
Human immunodeficiency virus (HIV) disease	55	0.8	48	45
Pneumonitis due to solids & liquids	53	0.7	82	85
Certain conditions originating in the perinatal period	51	0.7	0	0
Essential hypertension & hypertensive renal disease	45	0.6	73	86
Alcohol-induced deaths²	54	0.7	54	53
Drug-induced deaths²	99	1.4	37	43

LCODARBS

Notes:

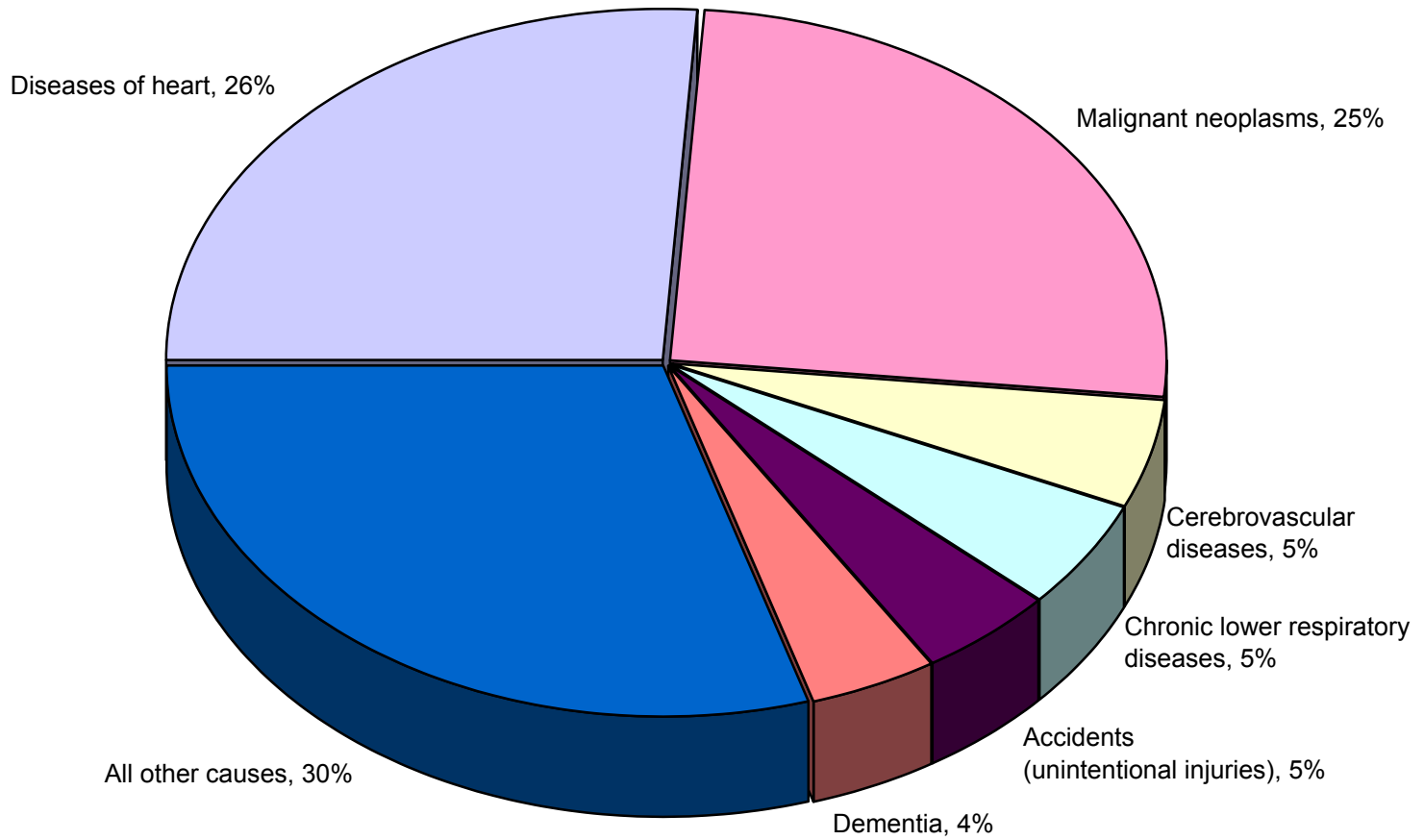
1. Classified according to ICD-10 Codes, Tenth Revision. See Appendix E for listing of ICD-10 Codes.
2. Included in selected categories.

Source:

Delaware Health Statistics Center

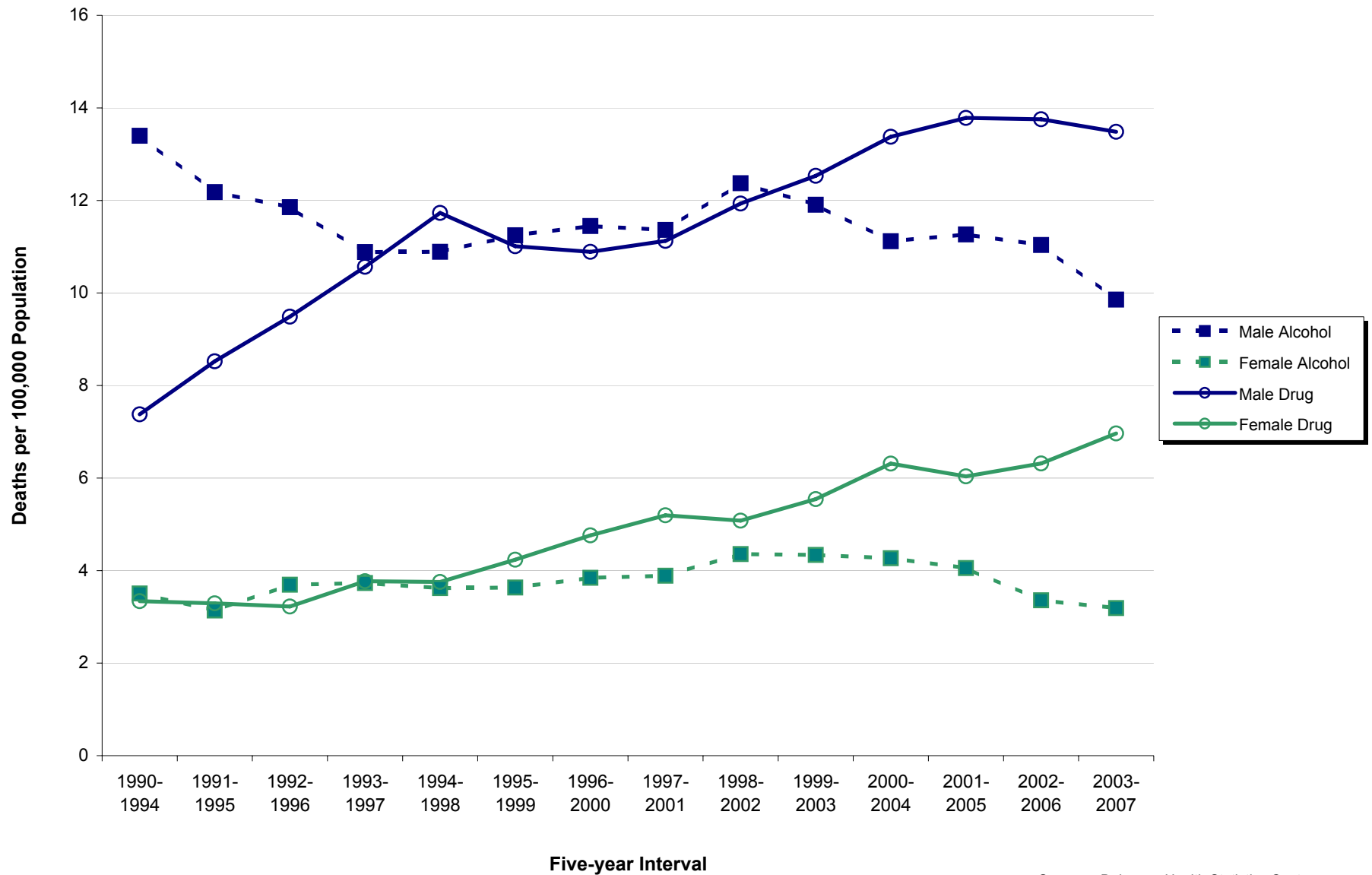
**Figure F-1
Leading Causes of Death**

Delaware, 2007



Source: Delaware Health Statistics Center

Figure F-2
Five-year Age-adjusted Drug- and Alcohol-Induced Mortality Rates by Sex
Delaware, 1990-2007



Source: Delaware Health Statistics Center

TABLE F-8
LEADING CAUSES OF DEATH
COUNTIES AND CITY OF WILMINGTON, 2003-2007

Kent

Cause of Death*	Deaths	
	#	%
Diseases of heart	1779	29.7
Malignant neoplasms	1468	24.5
Chronic lower respiratory diseases	350	5.8
Cerebrovascular diseases	283	4.7
Accidents (unintentional injuries)	279	4.7
Diabetes mellitus	201	3.4
Septicemia	125	2.1
Influenza & pneumonia	120	2.0
Nephritis, nephrotic syndrome & nephrosis	107	1.8
Alzheimer's disease	102	1.7
Intentional self-harm (suicide)	71	1.2
Chronic liver disease & cirrhosis	68	1.1
Essential hypertension & hypertensive renal disease	52	0.9
In situ, benign, & neoplasms of unk behavior	45	0.8
Human immunodeficiency virus (HIV) disease	41	0.7
Certain conditions originating in the perinatal period	38	0.6
All other causes	863	14.4
Total	5992	100.0

New Castle

Cause of Death*	Deaths	
	#	%
Diseases of heart	5443	26.4
Malignant neoplasms	4960	24.0
Cerebrovascular diseases	1207	5.8
Chronic lower respiratory diseases	985	4.8
Accidents (unintentional injuries)	827	4.0
Diabetes mellitus	624	3.0
Alzheimer's disease	475	2.3
Nephritis, nephrotic syndrome & nephrosis	418	2.0
Septicemia	357	1.7
Influenza & pneumonia	333	1.6
Intentional self-harm (suicide)	275	1.3
Human immunodeficiency virus (HIV) disease	239	1.2
Chronic liver disease & cirrhosis	211	1.0
Certain conditions originating in the perinatal period	198	1.0
Essential hypertension & hypertensive renal disease	176	0.9
Pneumonitis due to solids & liquids	170	0.8
All other causes	3743	18.1
Total	20641	100.0

City of Wilmington

Cause of Death*	Deaths	
	#	%
Diseases of heart	1005	26.3
Malignant neoplasms	763	20.0
Cerebrovascular diseases	258	6.8
Chronic lower respiratory diseases	169	4.4
Human immunodeficiency virus (HIV) disease	142	3.7
Accidents (unintentional injuries)	132	3.5
Diabetes mellitus	131	3.4
Nephritis, nephrotic syndrome & nephrosis	84	2.2
Septicemia	72	1.9
Assault (homicide)	67	1.8
Influenza & pneumonia	62	1.6
Alzheimer's disease	50	1.3
Essential hypertension & hypertensive renal disease	49	1.3
Certain conditions originating in the perinatal period	46	1.2
Intentional self-harm (suicide)	44	1.2
Chronic liver disease & cirrhosis	36	0.9
All other causes	711	18.6
Total	3821	100.0

Sussex

Cause of Death*	Deaths	
	#	%
Diseases of heart	2577	27.5
Malignant neoplasms	2499	26.7
Chronic lower respiratory diseases	480	5.1
Cerebrovascular diseases	394	4.2
Accidents (unintentional injuries)	386	4.1
Alzheimer's disease	292	3.1
Diabetes mellitus	271	2.9
Influenza & pneumonia	227	2.4
Nephritis, nephrotic syndrome & nephrosis	172	1.8
Septicemia	126	1.3
Chronic liver disease & cirrhosis	109	1.2
Intentional self-harm (suicide)	103	1.1
Pneumonitis due to solids & liquids	92	1.0
Aortic aneurysm and dissection	69	0.7
Parkinson's disease	65	0.7
Essential hypertension & hypertensive renal disease	59	0.6
All other causes	1448	15.5
Total	9369	100.0

LCODCTW

Note:

*Cause of death categories were derived using the NCHS list of 50 rankable causes of death as specified by NCHS. For specific codes, see Appendix E.

Source:

Delaware Health Statistics Center

TABLE F-9
TEN LEADING CAUSES OF DEATH BY SEX AND RACE GROUP
DELAWARE, 2003-2007

All Races, Male

Cause of Death*	Deaths	
	#	%
Diseases of heart	4940	27.5
Malignant neoplasms	4654	25.9
Accidents (unintentional injuries)	982	5.5
Chronic lower respiratory diseases	834	4.6
Cerebrovascular diseases	753	4.2
Diabetes mellitus	536	3.0
Nephritis, nephrotic syndrome & nephrosis	363	2.0
Intentional self-harm (suicide)	347	1.9
Influenza & pneumonia	321	1.8
Septicemia	282	1.6
All other causes	3967	22.1
Total	17979	100.0

All Races, Female

Cause of Death*	Deaths	
	#	%
Diseases of heart	4859	27.0
Malignant neoplasms	4273	23.7
Cerebrovascular diseases	1131	6.3
Chronic lower respiratory diseases	981	5.4
Alzheimer's disease	605	3.4
Diabetes mellitus	560	3.1
Accidents (unintentional injuries)	510	2.8
Influenza & pneumonia	359	2.0
Nephritis, nephrotic syndrome & nephrosis	334	1.9
Septicemia	326	1.8
All other causes	4085	22.7
Total	18023	100.0

White, Both Sexes

Cause of Death*	Deaths	
	#	%
Diseases of heart	8189	27.7
Malignant neoplasms	7475	25.2
Chronic lower respiratory diseases	1629	5.5
Cerebrovascular diseases	1534	5.2
Accidents (unintentional injuries)	1265	4.3
Diabetes mellitus	813	2.7
Alzheimer's disease	784	2.6
Influenza & pneumonia	590	2.0
Nephritis, nephrotic syndrome & nephrosis	516	1.7
Septicemia	471	1.6
All other causes	6346	21.4
Total	29612	100.0

Black, Both Sexes

Cause of Death*	Deaths	
	#	%
Diseases of heart	1539	25.3
Malignant neoplasms	1373	22.6
Cerebrovascular diseases	334	5.5
Diabetes mellitus	267	4.4
Human immunodeficiency virus (HIV) disease	241	4.0
Accidents (unintentional injuries)	204	3.4
Chronic lower respiratory diseases	177	2.9
Nephritis, nephrotic syndrome & nephrosis	175	2.9
Certain conditions originating in the perinatal period	147	2.4
Assault (homicide)	133	2.2
All other causes	1495	24.6
Total	6085	100.0

LCODMFWB

Hispanic, Both Sexes

Cause of Death*	Deaths	
	#	%
Diseases of heart	117	18.0
Accidents (unintentional injuries)	114	17.6
Malignant neoplasms	100	15.4
Cerebrovascular diseases	35	5.4
Certain conditions originating in the perinatal period	34	5.2
Chronic lower respiratory diseases	17	2.6
Assault (homicide)	15	2.3
Congenital malformations, deformations, & chromosomal abnormalities	14	2.2
Septicemia	14	2.2
Intentional self-harm (suicide)	13	2.0
All other causes	176	27.1
Total	649	100.0

Note:

*Cause of death categories were derived using the NCHS list of 50 rankable causes of death as specified by NCHS. For specific codes, see Appendix E.

Source:

Delaware Health Statistics Center

TABLE F-10
TEN LEADING CAUSES OF DEATH BY RACE-SEX GROUP
DELAWARE, 2003-2007

White Male

Cause of Death*	Deaths	
	#	%
Diseases of heart	4128	28.1
Malignant neoplasms	3910	26.6
Accidents (unintentional injuries)	830	5.6
Chronic lower respiratory diseases	730	5.0
Cerebrovascular diseases	595	4.0
Diabetes mellitus	413	2.8
Intentional self-harm (suicide)	310	2.1
Nephritis, nephrotic syndrome & nephrosis	271	1.8
Influenza & pneumonia	271	1.8
Alzheimer's disease	241	1.6
All other causes	3004	20.4
Total	14703	100.0

White Females

Cause of Death*	Deaths	
	#	%
Diseases of heart	4061	27.2
Malignant neoplasms	3565	23.9
Cerebrovascular diseases	939	6.3
Chronic lower respiratory diseases	899	6.0
Alzheimer's disease	543	3.6
Accidents (unintentional injuries)	435	2.9
Diabetes mellitus	400	2.7
Influenza & pneumonia	319	2.1
Nephritis, nephrotic syndrome & nephrosis	245	1.6
Septicemia	243	1.6
All other causes	3260	21.9
Total	14909	100.0

Black Males

Cause of Death*	Deaths	
	#	%
Diseases of heart	770	24.7
Malignant neoplasms	707	22.7
Cerebrovascular diseases	148	4.8
Human immunodeficiency virus (HIV) disease	148	4.8
Accidents (unintentional injuries)	135	4.3
Assault (homicide)	117	3.8
Diabetes mellitus	115	3.7
Chronic lower respiratory diseases	96	3.1
Nephritis, nephrotic syndrome & nephrosis	90	2.9
Certain conditions originating in the perinatal period	79	2.5
All other causes	710	22.8
Total	3115	100.0

Black Females

Cause of Death*	Deaths	
	#	%
Diseases of heart	769	25.9
Malignant neoplasms	666	22.4
Cerebrovascular diseases	186	6.3
Diabetes mellitus	152	5.1
Human immunodeficiency virus (HIV) disease	93	3.1
Nephritis, nephrotic syndrome & nephrosis	85	2.9
Chronic lower respiratory diseases	81	2.7
Septicemia	77	2.6
Accidents (unintentional injuries)	69	2.3
Certain conditions originating in the perinatal period	68	2.3
All other causes	724	24.4
Total	2970	100.0

Hispanic Males

Cause of Death*	Deaths	
	#	%
Accidents (unintentional injuries)	93	24.0
Diseases of heart	73	18.8
Malignant neoplasms	55	14.2
Certain conditions originating in the perinatal period	18	4.6
Cerebrovascular diseases	15	3.9
Assault (homicide)	13	3.4
Intentional self-harm (suicide)	11	2.8
Chronic liver disease & cirrhosis	7	1.8
Chronic lower respiratory diseases	7	1.8
In situ neoplasms, benign neoplasms & neoplasms of uncertain or unk behavior	6	1.5
All other causes	90	23.2
Total	388	100.0

Hispanic Females

Cause of Death*	Deaths	
	#	%
Malignant neoplasms	45	17.2
Diseases of heart	44	16.9
Accidents (unintentional injuries)	21	8.0
Cerebrovascular diseases	20	7.7
Certain conditions originating in the perinatal period	16	6.1
Chronic lower respiratory diseases	10	3.8
Congenital malformations, deformations, & chromosomal abnormalities	9	3.4
Diabetes mellitus	9	3.4
Alzheimer's disease	8	3.1
Septicemia	8	3.1
All other causes	71	27.2
Total	261	100.0

Note:

*Cause of death categories were derived using the NCHS list of 50 rankable causes of death as specified by NCHS. For specific codes, see Appendix E.

Source:

Delaware Health Statistics Center

LCODRCS

TABLE F-11
TEN LEADING CAUSES OF DEATH BY AGE
DELAWARE, 2003-2007

1-4 Years

Cause of Death*	Deaths	
	Number	Percent
Accidents (unintentional injuries)	17	29.3
Malignant neoplasms	7	12.1
Congenital malformations, deformations, & chromosomal abnormalities	6	10.3
Influenza & pneumonia	4	6.9
Diseases of heart	4	6.9
Cerebrovascular diseases	3	5.2
Assault (homicide)	1	1.7
Certain conditions originating in the perinatal period	1	1.7
Infections of kidney	1	1.7
Septicemia	1	1.7
Other	13	22.4
Total	58	100.0

5-14 Years

Cause of Death*	Deaths	
	Number	Percent
Accidents (unintentional injuries)	18	26.1
Malignant neoplasms	9	13.0
Congenital malformations, deformations, & chromosomal abnormalities	6	8.7
Assault (homicide)	5	7.2
Intentional self-harm (suicide)	3	4.3
Diseases of heart	3	4.3
Cerebrovascular diseases	2	2.9
Anemias	2	2.9
Influenza & pneumonia	1	1.4
Septicemia	1	1.4
Other	19	27.5
Total	69	100.0

15-24 Years

Cause of Death*	Deaths	
	Number	Percent
Accidents (unintentional injuries)	220	48.2
Assault (homicide)	74	16.2
Intentional self-harm (suicide)	49	10.7
Malignant neoplasms	19	4.2
Diseases of heart	14	3.1
Congenital malformations, deformations, & Cerebrovascular diseases	5	1.1
Cerebrovascular diseases	3	0.7
Septicemia	3	0.7
Complications of medical & surgical care	2	0.4
Nephritis, nephrotic syndrome & nephrosis	2	0.4
All other causes	65	14.3
Total	456	100.0

25-44 Years

Cause of Death*	Deaths	
	Number	Percent
Accidents (unintentional injuries)	423	21.5
Diseases of heart	293	14.9
Malignant neoplasms	284	14.5
Intentional self-harm (suicide)	154	7.8
Human immunodeficiency virus (HIV) disease	120	6.1
Assault (homicide)	91	4.6
Chronic liver disease & cirrhosis	50	2.5
Diabetes mellitus	40	2.0
Cerebrovascular diseases	35	1.8
Septicemia	25	1.3
All other causes	448	22.8
Total	1963	100.0

45-64 Years

Cause of Death*	Deaths	
	Number	Percent
Malignant neoplasms	2396	34.7
Diseases of heart	1623	23.5
Accidents (unintentional injuries)	341	4.9
Diabetes mellitus	225	3.3
Chronic lower respiratory diseases	198	2.9
Cerebrovascular diseases	185	2.7
Chronic liver disease & cirrhosis	179	2.6
Intentional self-harm (suicide)	177	2.6
Human immunodeficiency virus (HIV) disease	177	2.6
Septicemia	116	1.7
All other causes	1282	18.6
Total	6899	100.0

65+ Years

Cause of Death*	Deaths	
	Number	Percent
Diseases of heart	7849	30.1
Malignant neoplasms	6210	23.8
Cerebrovascular diseases	1655	6.4
Chronic lower respiratory diseases	1593	6.1
Alzheimer's disease	858	3.3
Diabetes mellitus	829	3.2
Influenza & pneumonia	601	2.3
Nephritis, nephrotic syndrome & nephrosis	570	2.2
Accidents (unintentional injuries)	463	1.8
Septicemia	453	1.7
All other causes	4971	19.1
Total	26052	100.0

Note:

*Cause of death categories were derived using the NCHS list of 50 rankable causes of death as specified by NCHS. For specific codes, see Appendix E.

Source:

Delaware Health Statistics Center

LCODAGE

TABLE F-12
NUMBER OF DEATHS BY AGE FOR SELECTED LEADING CAUSES OF DEATH
DELAWARE, 2007
(ALL RACES, BOTH SEXES)

Cause of Death*	Age of Decedent													
	Total	< 1	1-4	5-9	10-14	15-19	20-24	25-34	35-44	45-54	55-64	65-74	75+	Unk
Diseases of the Heart (I00-I09, I11, I13, I20-I51)	1899	0	2	0	0	1	3	8	58	144	205	279	1197	2
Acute rheumatic fever and chronic rheumatic heart disease (I00-I09)	13	0	0	0	0	0	0	0	0	0	2	3	8	0
Hypertensive heart disease (I11)	73	0	0	0	0	0	0	1	9	13	10	9	31	0
Hypertensive heart and renal disease (I13)	14	0	0	0	0	0	0	1	0	1	0	4	8	0
Ischemic heart disease (I20-I25)	1249	0	0	0	0	0	0	3	25	96	152	186	786	1
All other forms of heart disease (I26-I51)	550	0	2	0	0	1	3	3	24	34	41	77	364	1
Malignant Neoplasms (C00-C97)	1836	1	0	0	1	1	2	12	53	179	325	463	798	1
Malignant neoplasms of lip, oral and pharynx (C00-C14)	20	0	0	0	0	0	0	0	1	3	6	4	6	0
Malignant neoplasms of digestive organs (C15-C26)	444	0	0	0	0	0	0	3	9	54	72	110	196	0
Malignant neoplasms of respiratory and intrathoracic organs (C30-C39)	560	0	0	0	0	0	1	0	8	55	118	152	225	1
Malignant neoplasms of breast (C50)	139	0	0	0	0	0	0	0	13	19	27	25	55	0
Malignant neoplasms of female genital organs, (C51-C58)	88	0	0	0	0	0	0	0	4	10	18	26	30	0
Malignant neoplasms of male genital organs, (C60-C63)	88	0	0	0	0	0	0	0	0	0	6	23	59	0
Malignant neoplasms of urinary tract (C64-C68)	91	0	0	0	0	0	1	0	0	6	12	24	48	0
Malignant neoplasms of meninges, brain, and other parts of central nervous system (C70-C72)	35	0	0	0	0	0	0	2	3	4	5	10	11	0
Malignant neoplasms of lymphoid, hematopoietic, and related tissues (C81-C96)	149	1	0	0	1	1	0	5	7	13	26	34	61	0
All other and unspecified malignant neoplasms (C40-C49, C69, C73-C80, C97)	222	0	0	0	0	0	0	2	8	15	35	55	107	0
Cerebrovascular Diseases (I60-I69)	366	0	0	0	1	0	1	1	5	17	22	69	250	0

TABLE F-12 (continued)
(2007 - Delaware, All Races, Both Sexes)

	Age of Decedent													
	Total	< 1	1-4	5-9	10-14	15-19	20-24	25-34	35-44	45-54	55-64	65-74	75+	Unk
Chronic Lower Respiratory Diseases (J40-J47)	375	1	0	0	0	0	0	0	4	13	33	85	239	0
Accidents (unintentional injuries) (V01-X59, Y85-Y86)	304	2	2	1	1	19	27	42	46	45	33	18	68	0
Motor Vehicle Accidents (V02-V04, (V09.0,V09.2,V12-V14, V19.0-V19.2, V19.4-V19.6,V20-V79, V80.3-V80.5, V81.0-V81.1, V82.0-V82.1, V83-V86, V87.0-V87.8, V88.0-V88.8,V89.0,V89.2)	114	0	1	0	1	13	20	21	15	18	9	7	9	0
Nontransport Accidents (W00-X59, Y86)	179	1	1	0	0	6	7	20	30	24	20	11	59	0
Diabetes Mellitus (E10-E14)	223	0	0	0	0	0	1	1	4	13	29	52	123	0
Influenza and pneumonia (J10-J18)	113	0	2	0	0	0	0	0	1	3	5	16	86	0
Alzheimer's Disease (G30)	200	0	0	0	0	0	0	0	0	0	2	14	184	0
Nephritis, Nephrotic Syndrome, and Nephrosis (N00-N07, N17-N19, N25-N27)	162	0	0	0	0	0	0	1	3	2	16	36	104	0
Septicemia (A40-A41)	112	4	0	0	0	1	0	1	5	6	16	19	60	0
Intentional self-harm (suicide) (X60-X84, Y87.0)	92	0	0	0	0	5	5	6	22	29	11	6	8	0
Chronic liver disease and Cirrhosis (K70, K73-K74)	69	0	0	0	0	0	0	1	9	24	14	11	10	0
Essential (primary) hypertension and hypertensive renal disease (I10, I12)	45	0	0	0	0	0	0	0	0	4	0	9	32	0
Aortic aneurysm and dissection (I71)	28	0	0	0	0	0	0	0	2	1	2	5	18	0
Assault (homicide) (X85-Y09, Y87.1)	42	2	0	0	0	5	10	9	10	5	1	0	0	0
Human immunodeficiency virus (HIV) (B20-B24)	55	0	0	0	0	0	0	1	20	21	11	1	1	0
Certain conditions originating in the perinatal period (P00-P96)	51	51	0	0	0	0	0	0	0	0	0	0	0	0
Congenital malformations, deformations, and chromosomal abnormalities (Q00-Q99)	18	13	0	0	0	0	0	0	2	1	0	1	1	0
All Other Causes	1255	16	1	1	3	2	5	22	36	78	108	154	828	1
TOTAL	7245	90	7	2	6	34	54	105	280	585	833	1238	4007	4

LCDAGEDE

Note:

*ICD Codes, Tenth Revision.

Source:

Delaware Health Statistics Center

TABLE F-13
NUMBER OF DEATHS BY AGE FOR SELECTED LEADING CAUSES OF DEATH
KENT, 2007
(ALL RACES, BOTH SEXES)

Cause of Death*	Age of Decedent													
	Total	< 1	1-4	5-9	10-14	15-19	20-24	25-34	35-44	45-54	55-64	65-74	75+	Unk
Diseases of the Heart (I00-I09, I11, I13, I20-I51)	380	0	1	0	0	0	1	1	12	26	44	57	237	1
Acute rheumatic fever and chronic rheumatic heart disease (I00-I09)	5	0	0	0	0	0	0	0	0	0	1	2	2	0
Hypertensive heart disease (I11)	13	0	0	0	0	0	0	0	2	1	4	1	5	0
Hypertensive heart and renal disease (I13)	2	0	0	0	0	0	0	0	0	0	0	1	1	0
Ischemic heart disease (I20-I25)	253	0	0	0	0	0	0	1	7	21	33	36	154	1
All other forms of heart disease (I26-I51)	107	0	1	0	0	0	1	0	3	4	6	17	75	0
Malignant Neoplasms (C00-C97)	315	0	0	0	0	0	0	2	11	35	55	88	123	1
Malignant neoplasms of lip, oral and pharynx (C00-C14)	1	0	0	0	0	0	0	0	0	0	0	0	1	0
Malignant neoplasms of digestive organs (C15-C26)	75	0	0	0	0	0	0	1	1	8	14	20	31	0
Malignant neoplasms of respiratory and intrathoracic organs (C30-C39)	97	0	0	0	0	0	0	0	2	13	21	29	31	1
Malignant neoplasms of breast (C50)	26	0	0	0	0	0	0	0	3	3	5	6	9	0
Malignant neoplasms of female genital organs, (C51-C58)	13	0	0	0	0	0	0	0	0	3	0	3	7	0
Malignant neoplasms of male genital organs, (C60-C63)	14	0	0	0	0	0	0	0	0	0	1	3	10	0
Malignant neoplasms of urinary tract (C64-C68)	13	0	0	0	0	0	0	0	0	1	1	2	9	0
Malignant neoplasms of meninges, brain, and other parts of central nervous system (C70-C72)	7	0	0	0	0	0	0	1	1	1	2	1	1	0
Malignant neoplasms of lymphoid, hematopoietic, and related tissues (C81-C96)	20	0	0	0	0	0	0	0	2	3	4	6	5	0
All other and unspecified malignant neoplasms (C40-C49, C69, C73-C80,C97)	49	0	0	0	0	0	0	0	2	3	7	18	19	0
Cerebrovascular Diseases (I60-I69)	55	0	0	0	0	0	0	0	1	5	3	13	33	0

TABLE F-13 (continued)
(2007 - Kent, All Races, Both Sexes)

	Age of Decedent													Unk
	Total	< 1	1-4	5-9	10-14	15-19	20-24	25-34	35-44	45-54	55-64	65-74	75+	
Chronic Lower Respiratory Diseases (J40-J47)	72	0	0	0	0	0	0	0	1	1	12	16	42	0
Accidents (unintentional injuries) (V01-X59, Y85-Y86)	26	0	0	0	0	0	0	0	1	1	6	4	14	0
Motor Vehicle Accidents (V02-V04, (V09.0,V09.2,V12-V14, V19.0-V19.2, V19.4-V19.6,V20-V79, V80.3-V80.5, V81.0-V81.1, V82.0-V82.1, V83-V86, V87.0-V87.8, V88.0-V88.8,V89.0,V89.2)	22	0	0	0	0	2	3	6	3	4	1	1	2	0
Nontransport Accidents (W00-X59, Y86)	23	1	0	0	0	0	4	1	3	2	1	2	9	0
Diabetes Mellitus (E10-E14)	40	0	0	0	0	0	0	0	1	4	7	10	18	0
Influenza and pneumonia (J10-J18)	18	0	1	0	0	0	0	0	0	0	0	4	13	0
Alzheimer's Disease (G30)	34	0	0	0	0	0	0	0	0	0	0	5	29	0
Nephritis, Nephrotic Syndrome, and Nephrosis (N00-N07, N17-N19, N25-N27)	24	0	0	0	0	0	0	1	0	0	4	5	14	0
Septicemia (A40-A41)	26	0	0	0	0	0	0	0	1	1	6	4	14	0
Intentional self-harm (suicide) (X60-X84, Y87.0)	14	0	0	0	0	0	0	1	3	7	2	1	0	0
Chronic liver disease and Cirrhosis (K70, K73-K74)	15	0	0	0	0	0	0	1	1	5	2	1	5	0
Essential (primary) hypertension and hypertensive renal disease (I10, I12)	7	0	0	0	0	0	0	0	0	1	0	2	4	0
Aortic aneurysm and dissection (I71)	3	0	0	0	0	0	0	0	0	0	0	0	3	0
Assault (homicide) (X85-Y09, Y87.1)	7	0	0	0	0	2	2	2	0	1	0	0	0	0
Human immunodeficiency virus (HIV) (B20-B24)	9	0	0	0	0	0	0	0	6	2	1	0	0	0
Certain conditions originating in the perinatal period (P00-P96)	5	5	0	0	0	0	0	0	0	0	0	0	0	0
Congenital malformations, deformations, and chromosomal abnormalities (Q00-Q99)	3	1	0	0	0	0	0	0	0	1	0	0	1	0
All Other Causes	202	3	0	0	1	3	7	11	10	20	19	21	107	0
TOTAL	1255	9	2	0	1	5	10	19	48	110	161	231	657	2

LCDAGEKT

Note:
*ICD Codes, Tenth Revision.

Source:
Delaware Health Statistics Center

TABLE F-14
NUMBER OF DEATHS BY AGE FOR SELECTED LEADING CAUSES OF DEATH
NEW CASTLE, 2007
(ALL RACES, BOTH SEXES)

Cause of Death*	Age of Decedent													
	Total	< 1	1-4	5-9	10-14	15-19	20-24	25-34	35-44	45-54	55-64	65-74	75+	Unk
Diseases of the Heart (I00-I09, I11, I13, I20-I51)	1027	0	1	0	0	1	2	6	36	89	112	148	631	1
Acute rheumatic fever and chronic rheumatic heart disease (I00-I09)	4	0	0	0	0	0	0	0	0	0	0	0	4	0
Hypertensive heart disease (I11)	42	0	0	0	0	0	0	0	5	10	3	8	16	0
Hypertensive heart and renal disease (I13)	8	0	0	0	0	0	0	1	0	1	0	3	3	0
Ischemic heart disease (I20-I25)	656	0	0	0	0	0	0	2	14	57	85	92	406	0
All other forms of heart disease (I26-I51)	317	0	1	0	0	1	2	3	17	21	24	45	202	1
Malignant Neoplasms (C00-C97)	987	1	0	0	1	1	2	8	28	105	172	225	444	0
Malignant neoplasms of lip, oral and pharynx (C00-C14)	9	0	0	0	0	0	0	0	0	3	3	1	2	0
Malignant neoplasms of digestive organs (C15-C26)	241	0	0	0	0	0	0	1	5	38	34	55	108	0
Malignant neoplasms of respiratory and intrathoracic organs (C30-C39)	294	0	0	0	0	0	1	0	6	30	57	72	128	0
Malignant neoplasms of breast (C50)	65	0	0	0	0	0	0	0	6	11	13	8	27	0
Malignant neoplasms of female genital organs, (C51-C58)	48	0	0	0	0	0	0	0	3	2	11	14	18	0
Malignant neoplasms of male genital organs, (C60-C63)	53	0	0	0	0	0	0	0	0	0	4	14	35	0
Malignant neoplasms of urinary tract (C64-C68)	49	0	0	0	0	0	1	0	0	3	8	13	24	0
Malignant neoplasms of meninges, brain, and other parts of central nervous system (C70-C72)	19	0	0	0	0	0	0	1	1	1	0	8	8	0
Malignant neoplasms of lymphoid, hematopoietic, and related tissues (C81-C96)	92	1	0	0	1	1	0	4	2	7	22	17	37	0
All other and unspecified malignant neoplasms (C40-C49, C69, C73-C80, C97)	117	0	0	0	0	0	0	2	5	10	20	23	57	0
Cerebrovascular Diseases (I60-I69)	234	0	0	0	1	0	1	1	4	8	14	38	167	0

TABLE F-14 (continued)
(2007 - New Castle, All Races, Both Sexes)

	Age of Decedent													
	Total	< 1	1-4	5-9	10-14	15-19	20-24	25-34	35-44	45-54	55-64	65-74	75+	Unk
Chronic Lower Respiratory Diseases (J40-J47)	208	0	0	0	0	0	0	0	1	8	12	51	136	0
Accidents (unintentional injuries) (V01-X59, Y85-Y86)	185	1	1	0	1	10	14	25	24	29	24	11	45	0
Motor Vehicle Accidents (V02-V04, (V09.0,V09.2,V12-V14, V19.0-V19.2, V19.4-V19.6,V20-V79, V80.3-V80.5, V81.0-V81.1, V82.0-V82.1, V83-V86, V87.0-V87.8, V88.0-V88.8,V89.0,V89.2)	54	0	1	0	1	6	11	9	5	10	4	3	4	0
Nontransport Accidents (W00-X59, Y86)	125	0	0	0	0	4	3	16	18	18	17	8	41	0
Diabetes Mellitus (E10-E14)	126	0	0	0	0	0	1	1	3	8	17	30	66	0
Influenza and pneumonia (J10-J18)	64	0	0	0	0	0	0	0	1	2	4	5	52	0
Alzheimer's Disease (G30)	102	0	0	0	0	0	0	0	0	0	0	4	98	0
Nephritis, Nephrotic Syndrome, and Nephrosis (N00-N07, N17-N19, N25-N27)	102	0	0	0	0	0	0	0	2	1	9	24	66	0
Septicemia (A40-A41)	68	3	0	0	0	0	0	1	3	4	9	11	37	0
Intentional self-harm (suicide) (X60-X84, Y87.0)	51	0	0	0	0	3	3	4	15	12	7	3	4	0
Chronic liver disease and Cirrhosis (K70, K73-K74)	30	0	0	0	0	0	0	0	4	13	6	7	0	0
Essential (primary) hypertension and hypertensive renal disease (I10, I12)	28	0	0	0	0	0	0	0	0	2	0	5	21	0
Aortic aneurysm and dissection (I71)	11	0	0	0	0	0	0	0	1	1	2	2	5	0
Assault (homicide) (X85-Y09, Y87.1)	29	2	0	0	0	2	7	6	9	2	1	0	0	0
Human immunodeficiency virus (HIV) (B20-B24)	39	0	0	0	0	0	0	0	11	18	10	0	0	0
Certain conditions originating in the perinatal period (P00-P96)	35	35	0	0	0	0	0	0	0	0	0	0	0	0
Congenital malformations, deformations, and chromosomal abnormalities (Q00-Q99)	10	7	0	0	0	0	0	0	2	0	0	1	0	0
All Other Causes	764	10	1	1	2	1	4	16	19	47	63	79	520	1
TOTAL	4100	59	3	1	5	18	34	68	163	349	462	644	2292	2

Note:

*ICD Codes, Tenth Revision.

LCDAGENC

Source:

Delaware Health Statistics Center

TABLE F-15
NUMBER OF DEATHS BY AGE FOR SELECTED LEADING CAUSES OF DEATH
CITY OF WILMINGTON, 2007
(ALL RACES, BOTH SEXES)

Cause of Death*	Age of Decedent													
	Total	< 1	1-4	5-9	10-14	15-19	20-24	25-34	35-44	45-54	55-64	65-74	75+	Unk
Diseases of the Heart (I00-I09, I11, I13, I20-I51)	177	0	0	0	0	0	0	0	6	16	18	26	111	0
Acute rheumatic fever and chronic rheumatic heart disease (I00-I09)	0	0	0	0	0	0	0	0	0	0	0	0	0	0
Hypertensive heart disease (I11)	10	0	0	0	0	0	0	0	1	3	1	3	2	0
Hypertensive heart and renal disease (I13)	1	0	0	0	0	0	0	0	0	0	0	1	0	0
Ischemic heart disease (I20-I25)	108	0	0	0	0	0	0	0	3	9	12	15	69	0
All other forms of heart disease (I26-I51)	58	0	0	0	0	0	0	0	2	4	5	7	40	0
Malignant Neoplasms (C00-C97)	140	0	0	0	0	0	2	1	1	19	22	30	65	0
Malignant neoplasms of lip, oral and pharynx (C00-C14)	1	0	0	0	0	0	0	0	0	0	0	1	0	0
Malignant neoplasms of digestive organs (C15-C26)	32	0	0	0	0	0	0	0	0	6	5	6	15	0
Malignant neoplasms of respiratory and intrathoracic organs (C30-C39)	45	0	0	0	0	0	1	0	0	3	7	14	20	0
Malignant neoplasms of breast (C50)	8	0	0	0	0	0	0	0	0	3	3	0	2	0
Malignant neoplasms of female genital organs, (C51-C58)	6	0	0	0	0	0	0	0	0	1	0	4	1	0
Malignant neoplasms of male genital organs, (C60-C63)	7	0	0	0	0	0	0	0	0	0	1	0	6	0
Malignant neoplasms of urinary tract (C64-C68)	9	0	0	0	0	0	1	0	0	1	1	1	5	0
Malignant neoplasms of meninges, brain, and other parts of central nervous system (C70-C72)	1	0	0	0	0	0	0	0	0	0	0	0	1	0
Malignant neoplasms of lymphoid, hematopoietic, and related tissues (C81-C96)	10	0	0	0	0	0	0	1	0	0	2	1	6	0
All other and unspecified malignant neoplasms (C40-C49, C69, C73-C80, C97)	21	0	0	0	0	0	0	0	1	5	3	3	9	0
Cerebrovascular Diseases (I60-I69)	55	0	0	0	0	0	0	1	0	2	4	9	39	0

TABLE F-15 (continued)
(2007 - City of Wilmington, All Races, Both Sexes)

	Age of Decedent													
	Total	< 1	1-4	5-9	10-14	15-19	20-24	25-34	35-44	45-54	55-64	65-74	75+	Unk
Chronic Lower Respiratory Diseases (J40-J47)	36	0	0	0	0	0	0	0	0	1	0	15	20	0
Accidents (unintentional injuries) (V01-X59, Y85-Y86)	19	0	0	0	0	0	2	3	0	5	3	1	5	0
Motor Vehicle Accidents (V02-V04, (V09.0,V09.2,V12-V14, V19.0-V19.2, V19.4-V19.6,V20-V79, V80.3-V80.5, V81.0-V81.1, V82.0-V82.1, V83-V86, V87.0-V87.8, V88.0-V88.8,V89.0,V89.2)	5	0	0	0	0	0	1	1	0	3	0	0	0	0
Nontransport Accidents (W00-X59, Y86)	13	0	0	0	0	0	1	2	0	1	3	1	5	0
Diabetes Mellitus (E10-E14)	30	0	0	0	0	0	1	1	1	2	5	6	14	0
Influenza and pneumonia (J10-J18)	12	0	0	0	0	0	0	0	0	0	2	2	8	0
Alzheimer's Disease (G30)	11	0	0	0	0	0	0	0	0	0	0	1	10	0
Nephritis, Nephrotic Syndrome, and Nephrosis (N00-N07, N17-N19, N25-N27)	17	0	0	0	0	0	0	0	2	0	2	5	8	0
Septicemia (A40-A41)	13	1	0	0	0	0	0	1	1	0	0	3	7	0
Intentional self-harm (suicide) (X60-X84, Y87.0)	5	0	0	0	0	0	1	1	1	1	0	0	1	0
Chronic liver disease and Cirrhosis (K70, K73-K74)	4	0	0	0	0	0	0	0	1	0	1	2	0	0
Essential (primary) hypertension and hypertensive renal disease (I10, I12)	5	0	0	0	0	0	0	0	0	1	0	1	3	0
Aortic aneurysm and dissection (I71)	0	0	0	0	0	0	0	0	0	0	0	0	0	0
Assault (homicide) (X85-Y09, Y87.1)	11	1	0	0	0	1	3	3	3	0	0	0	0	0
Human immunodeficiency virus (HIV) (B20-B24)	22	0	0	0	0	0	0	0	6	11	5	0	0	0
Certain conditions originating in the perinatal period (P00-P96)	9	9	0	0	0	0	0	0	0	0	0	0	0	0
Congenital malformations, deformations, and chromosomal abnormalities (Q00-Q99)	3	2	0	0	0	0	0	0	1	0	0	0	0	0
All Other Causes	136	4	1	0	0	0	0	1	6	12	11	13	87	1
TOTAL	705	17	1	0	0	1	9	12	29	70	73	114	378	1

Note:

*ICD Codes, Tenth Revision.

LCDAGEWLM

Source:

Delaware Health Statistics Center

TABLE F-16
NUMBER OF DEATHS BY AGE FOR SELECTED LEADING CAUSES OF DEATH
SUSSEX, 2007
(ALL RACES, BOTH SEXES)

Cause of Death*	Age of Decedent													
	Total	< 1	1-4	5-9	10-14	15-19	20-24	25-34	35-44	45-54	55-64	65-74	75+	Unk
Diseases of the Heart (I00-I09, I11, I13, I20-I51)	492	0	0	0	0	0	0	1	10	29	49	74	329	0
Acute rheumatic fever and chronic rheumatic heart disease (I00-I09)	4	0	0	0	0	0	0	0	0	0	1	1	2	0
Hypertensive heart disease (I11)	18	0	0	0	0	0	0	1	2	2	3	0	10	0
Hypertensive heart and renal disease (I13)	4	0	0	0	0	0	0	0	0	0	0	0	4	0
Ischemic heart disease (I20-I25)	340	0	0	0	0	0	0	0	4	18	34	58	226	0
All other forms of heart disease (I26-I51)	126	0	0	0	0	0	0	0	4	9	11	15	87	0
Malignant Neoplasms (C00-C97)	534	0	0	0	0	0	0	2	14	39	98	150	231	0
Malignant neoplasms of lip, oral and pharynx (C00-C14)	10	0	0	0	0	0	0	0	1	0	3	3	3	0
Malignant neoplasms of digestive organs (C15-C26)	128	0	0	0	0	0	0	1	3	8	24	35	57	0
Malignant neoplasms of respiratory and intrathoracic organs (C30-C39)	169	0	0	0	0	0	0	0	0	12	40	51	66	0
Malignant neoplasms of breast (C50)	48	0	0	0	0	0	0	0	4	5	9	11	19	0
Malignant neoplasms of female genital organs, (C51-C58)	27	0	0	0	0	0	0	0	1	5	7	9	5	0
Malignant neoplasms of male genital organs, (C60-C63)	21	0	0	0	0	0	0	0	0	0	1	6	14	0
Malignant neoplasms of urinary tract (C64-C68)	29	0	0	0	0	0	0	0	0	2	3	9	15	0
Malignant neoplasms of meninges, brain, and other parts of central nervous system (C70-C72)	9	0	0	0	0	0	0	0	1	2	3	1	2	0
Malignant neoplasms of lymphoid, hematopoietic, and related tissues (C81-C96)	37	0	0	0	0	0	0	1	3	3	0	11	19	0
All other and unspecified malignant neoplasms (C40-C49, C69, C73-C80,C97)	56	0	0	0	0	0	0	0	1	2	8	14	31	0
Cerebrovascular Diseases (I60-I69)	77	0	0	0	0	0	0	0	0	4	5	18	50	0

TABLE F-16 (continued)
(2007 - Sussex, All Races, Both Sexes)

	Age of Decedent													
	Total	< 1	1-4	5-9	10-14	15-19	20-24	25-34	35-44	45-54	55-64	65-74	75+	Unk
Chronic Lower Respiratory Diseases (J40-J47)	95	1	0	0	0	0	0	0	2	4	9	18	61	0
Accidents (unintentional injuries) (V01-X59, Y85-Y86)	71	0	1	1	0	7	6	10	16	8	6	4	12	0
Motor Vehicle Accidents (V02-V04, (V09.0,V09.2,V12-V14, V19.0-V19.2, V19.4-V19.6,V20-V79, V80.3-V80.5, V81.0-V81.1, V82.0-V82.1, V83-V86, V87.0-V87.8, V88.0-V88.8,V89.0,V89.2)	38	0	0	0	0	5	6	6	7	4	4	3	3	0
Nontransport Accidents (W00-X59, Y86)	31	0	1	0	0	2	0	3	9	4	2	1	9	0
Diabetes Mellitus (E10-E14)	57	0	0	0	0	0	0	0	0	1	5	12	39	0
Influenza and pneumonia (J10-J18)	31	0	1	0	0	0	0	0	0	1	1	7	21	0
Alzheimer's Disease (G30)	64	0	0	0	0	0	0	0	0	0	2	5	57	0
Nephritis, Nephrotic Syndrome, and Nephrosis (N00-N07, N17-N19, N25-N27)	36	0	0	0	0	0	0	0	1	1	3	7	24	0
Septicemia (A40-A41)	18	1	0	0	0	1	0	0	1	1	1	4	9	0
Intentional self-harm (suicide) (X60-X84, Y87.0)	27	0	0	0	0	2	2	1	4	10	2	2	4	0
Chronic liver disease and Cirrhosis (K70, K73-K74)	24	0	0	0	0	0	0	0	4	6	6	3	5	0
Essential (primary) hypertension and hypertensive renal disease (I10, I12)	10	0	0	0	0	0	0	0	0	1	0	2	7	0
Aortic aneurysm and dissection (I71)	14	0	0	0	0	0	0	0	1	0	0	3	10	0
Assault (homicide) (X85-Y09, Y87.1)	6	0	0	0	0	1	1	1	1	2	0	0	0	0
Human immunodeficiency virus (HIV) (B20-B24)	7	0	0	0	0	0	0	1	3	1	0	1	1	0
Certain conditions originating in the perinatal period (P00-P96)	11	11	0	0	0	0	0	0	0	0	0	0	0	0
Congenital malformations, deformations, and chromosomal abnormalities (Q00-Q99)	5	5	0	0	0	0	0	0	0	0	0	0	0	0
All Other Causes	311	4	0	0	0	0	1	2	12	18	23	53	198	0
TOTAL	1890	22	2	1	0	11	10	18	69	126	210	363	1058	0

Note:

*ICD Codes, Tenth Revision.

LCDAGESX

Source:

Delaware Health Statistics Center

TABLE F-17
NUMBER OF DEATHS BY AGE FOR SELECTED LEADING CAUSES OF DEATH
DELAWARE, 2007
(ALL RACES, MALES)

Cause of Death*	Age of Decedent													
	Total	< 1	1-4	5-9	10-14	15-19	20-24	25-34	35-44	45-54	55-64	65-74	75+	Unk
Diseases of the Heart (I00-I09, I11, I13, I20-I51)	999	0	0	0	0	1	1	3	39	108	153	189	504	1
Acute rheumatic fever and chronic rheumatic heart disease (I00-I09)	3	0	0	0	0	0	0	0	0	0	0	1	2	0
Hypertensive heart disease (I11)	37	0	0	0	0	0	0	0	6	9	7	7	8	0
Hypertensive heart and renal disease (I13)	8	0	0	0	0	0	0	0	0	1	0	2	5	0
Ischemic heart disease (I20-I25)	712	0	0	0	0	0	0	3	19	78	120	132	360	0
All other forms of heart disease (I26-I51)	239	0	0	0	0	1	1	0	14	20	26	47	129	1
Malignant Neoplasms (C00-C97)	930	1	0	0	1	0	2	10	20	85	177	243	391	0
Malignant neoplasms of lip, oral and pharynx (C00-C14)	9	0	0	0	0	0	0	0	1	1	4	2	1	0
Malignant neoplasms of digestive organs (C15-C26)	241	0	0	0	0	0	0	2	4	35	49	59	92	0
Malignant neoplasms of respiratory and intrathoracic organs (C30-C39)	292	0	0	0	0	0	1	0	4	31	66	79	111	0
Malignant neoplasms of breast (C50)	1	0	0	0	0	0	0	0	0	0	0	0	1	0
Malignant neoplasms of male genital organs, (C60-C63)	88	0	0	0	0	0	0	0	0	0	6	23	59	0
Malignant neoplasms of urinary tract (C64-C68)	69	0	0	0	0	0	1	0	0	3	10	20	35	0
Malignant neoplasms of meninges, brain, and other parts of central nervous system (C70-C72)	18	0	0	0	0	0	0	1	2	2	4	5	4	0
Malignant neoplasms of lymphoid, hematopoietic, and related tissues (C81-C96)	95	1	0	0	1	0	0	5	6	7	17	24	34	0
All other and unspecified malignant neoplasms (C40-C49, C69, C73-C80, C97)	117	0	0	0	0	0	0	2	3	6	21	31	54	0
Cerebrovascular Diseases (I60-I69)	140	0	0	0	1	0	1	1	1	10	16	42	68	0

TABLE F-17 (continued)
(2007 - All Races, Male)

	Age of Decedent													
	Total	< 1	1-4	5-9	10-14	15-19	20-24	25-34	35-44	45-54	55-64	65-74	75+	Unk
Chronic Lower Respiratory Diseases (J40-J47)	172	1	0	0	0	0	0	0	1	5	24	40	101	0
Accidents (unintentional injuries) (V01-X59, Y85-Y86)	209	0	2	1	1	15	22	31	38	32	25	11	31	0
Motor Vehicle Accidents (V02-V04, (V09.0,V09.2,V12-V14, V19.0-V19.2, V19.4-V19.6,V20-V79, V80.3-V80.5, V81.0-V81.1, V82.0-V82.1, V83-V86, V87.0-V87.8, V88.0-V88.8,V89.0,V89.2)	90	0	1	0	1	9	18	17	13	14	6	4	7	0
Nontransport Accidents (W00-X59, Y86)	110	0	1	0	0	6	4	13	24	16	15	7	24	0
Diabetes Mellitus (E10-E14)	118	0	0	0	0	0	0	1	3	7	18	32	57	0
Influenza and pneumonia (J10-J18)	51	0	1	0	0	0	0	0	1	2	2	8	37	0
Alzheimer's Disease (G30)	67	0	0	0	0	0	0	0	0	0	1	7	59	0
Nephritis, Nephrotic Syndrome, and Nephrosis (N00-N07, N17-N19, N25-N27)	85	0	0	0	0	0	0	0	2	1	11	17	54	0
Septicemia (A40-A41)	56	1	0	0	0	1	0	0	3	6	6	10	29	0
Intentional self-harm (suicide) (X60-X84, Y87.0)	68	0	0	0	0	2	5	3	16	24	9	4	5	0
Chronic liver disease and Cirrhosis (K70, K73-K74)	38	0	0	0	0	0	0	0	7	14	6	5	6	0
Essential (primary) hypertension and hypertensive renal disease (I10, I12)	18	0	0	0	0	0	0	0	0	2	0	8	8	0
Aortic aneurysm and dissection (I71)	15	0	0	0	0	0	0	0	2	1	0	3	9	0
Assault (homicide) (X85-Y09, Y87.1)	33	1	0	0	0	5	8	7	8	3	1	0	0	0
Human immunodeficiency virus (HIV) (B20-B24)	33	0	0	0	0	0	0	1	9	15	6	1	1	0
Certain conditions originating in the perinatal period (P00-P96)	29	29	0	0	0	0	0	0	0	0	0	0	0	0
Congenital malformations, deformations, and chromosomal abnormalities (Q00-Q99)	9	6	0	0	0	0	0	0	1	0	0	1	1	0
All Other Causes	562	9	1	0	3	1	3	19	19	49	66	85	306	1
TOTAL	3632	48	4	1	6	25	42	76	170	364	521	706	1667	2

LCDAGMAL

Note:

*ICD Codes, Tenth Revision.

Source:

Delaware Health Statistics Center

TABLE F-18
NUMBER OF DEATHS BY AGE FOR SELECTED LEADING CAUSES OF DEATH
DELAWARE, 2007
(ALL RACES, FEMALES)

Cause of Death*	Age of Decedent													
	Total	< 1	1-4	5-9	10-14	15-19	20-24	25-34	35-44	45-54	55-64	65-74	75+	Unk
Diseases of the Heart (I00-I09, I11, I13, I20-I51)	900	0	2	0	0	0	2	5	19	36	52	90	693	1
Acute rheumatic fever and chronic rheumatic heart disease (I00-I09)	10	0	0	0	0	0	0	0	0	0	2	2	6	0
Hypertensive heart disease (I11)	36	0	0	0	0	0	0	1	3	4	3	2	23	0
Hypertensive heart and renal disease (I13)	6	0	0	0	0	0	0	1	0	0	0	2	3	0
Ischemic heart disease (I20-I25)	537	0	0	0	0	0	0	0	6	18	32	54	426	1
All other forms of heart disease (I26-I51)	311	0	2	0	0	0	2	3	10	14	15	30	235	0
Malignant Neoplasms (C00-C97)	906	0	0	0	0	1	0	2	33	94	148	220	407	1
Malignant neoplasms of lip, oral and pharynx (C00-C14)	11	0	0	0	0	0	0	0	0	2	2	2	5	0
Malignant neoplasms of digestive organs (C15-C26)	203	0	0	0	0	0	0	1	5	19	23	51	104	0
Malignant neoplasms of respiratory and intrathoracic organs (C30-C39)	268	0	0	0	0	0	0	0	4	24	52	73	114	1
Malignant neoplasms of breast (C50)	138	0	0	0	0	0	0	0	13	19	27	25	54	0
Malignant neoplasms of female genital organs, (C51-C58)	88	0	0	0	0	0	0	0	4	10	18	26	30	0
Malignant neoplasms of urinary tract (C64-C68)	22	0	0	0	0	0	0	0	0	3	2	4	13	0
Malignant neoplasms of meninges, brain, and other parts of central nervous system (C70-C72)	17	0	0	0	0	0	0	1	1	2	1	5	7	0
Malignant neoplasms of lymphoid, hematopoietic, and related tissues (C81-C96)	54	0	0	0	0	1	0	0	1	6	9	10	27	0
All other and unspecified malignant neoplasms (C40-C49, C69, C73-C80,C97)	105	0	0	0	0	0	0	0	5	9	14	24	53	0
Cerebrovascular Diseases (I60-I69)	226	0	0	0	0	0	0	0	4	7	6	27	182	0

TABLE F-18 (continued)
(2007 - All Races, Female)

	Age of Decedent													
	Total	< 1	1-4	5-9	10-14	15-19	20-24	25-34	35-44	45-54	55-64	65-74	75+	Unk
Chronic Lower Respiratory Diseases (J40-J47)	203	0	0	0	0	0	0	0	3	8	9	45	138	0
Accidents (unintentional injuries) (V01-X59, Y85-Y86)	95	2	0	0	0	4	5	11	8	13	8	7	37	0
Motor Vehicle Accidents (V02-V04, (V09.0,V09.2,V12-V14, V19.0-V19.2, V19.4-V19.6,V20-V79, V80.3-V80.5, V81.0-V81.1, V82.0-V82.1, V83-V86, V87.0-V87.8, V88.0-V88.8,V89.0,V89.2)	24	0	0	0	0	4	2	4	2	4	3	3	2	0
Nontransport Accidents (W00-X59, Y86)	69	1	0	0	0	0	3	7	6	8	5	4	35	0
Diabetes Mellitus (E10-E14)	105	0	0	0	0	0	1	0	1	6	11	20	66	0
Influenza and pneumonia (J10-J18)	62	0	1	0	0	0	0	0	0	1	3	8	49	0
Alzheimer's Disease (G30)	133	0	0	0	0	0	0	0	0	0	1	7	125	0
Nephritis, Nephrotic Syndrome, and Nephrosis (N00-N07, N17-N19, N25-N27)	77	0	0	0	0	0	0	1	1	1	5	19	50	0
Septicemia (A40-A41)	56	3	0	0	0	0	0	1	2	0	10	9	31	0
Intentional self-harm (suicide) (X60-X84, Y87.0)	24	0	0	0	0	3	0	3	6	5	2	2	3	0
Chronic liver disease and Cirrhosis (K70, K73-K74)	31	0	0	0	0	0	0	1	2	10	8	6	4	0
Essential (primary) hypertension and hypertensive renal disease (I10, I12)	27	0	0	0	0	0	0	0	0	2	0	1	24	0
Aortic aneurysm and dissection (I71)	13	0	0	0	0	0	0	0	0	0	2	2	9	0
Assault (homicide) (X85-Y09, Y87.1)	9	1	0	0	0	0	2	2	2	2	0	0	0	0
Human immunodeficiency virus (HIV) (B20-B24)	22	0	0	0	0	0	0	0	11	6	5	0	0	0
Certain conditions originating in the perinatal period (P00-P96)	22	22	0	0	0	0	0	0	0	0	0	0	0	0
Congenital malformations, deformations, and chromosomal abnormalities (Q00-Q99)	9	7	0	0	0	0	0	0	1	1	0	0	0	0
All Other Causes	693	7	0	1	0	1	2	3	17	29	42	69	522	0
TOTAL	3613	42	3	1	0	9	12	29	110	221	312	532	2340	2

Note:

*ICD Codes, Tenth Revision.

Source:

Delaware Health Statistics Center

LCDAGFEM

TABLE F-19
NUMBER OF DEATHS BY AGE FOR SELECTED LEADING CAUSES OF DEATH
DELAWARE, 2007
(WHITE, BOTH SEXES)

Cause of Death*	Age of Decedent													
	Total	< 1	1-4	5-9	10-14	15-19	20-24	25-34	35-44	45-54	55-64	65-74	75+	Unk
Diseases of the Heart (I00-I09, I11, I13, I20-I51)	1600	0	1	0	0	1	2	5	43	101	153	221	1071	2
Acute rheumatic fever and chronic rheumatic heart disease (I00-I09)	13	0	0	0	0	0	0	0	0	0	2	3	8	0
Hypertensive heart disease (I11)	56	0	0	0	0	0	0	0	6	8	8	7	27	0
Hypertensive heart and renal disease (I13)	7	0	0	0	0	0	0	0	0	0	0	1	6	0
Ischemic heart disease (I20-I25)	1058	0	0	0	0	0	0	3	18	70	118	147	701	1
All other forms of heart disease (I26-I51)	466	0	1	0	0	1	2	2	19	23	25	63	329	1
Malignant Neoplasms (C00-C97)	1553	1	0	0	1	1	1	8	41	124	268	399	709	0
Malignant neoplasms of lip, oral and pharynx (C00-C14)	18	0	0	0	0	0	0	0	0	3	5	4	6	0
Malignant neoplasms of digestive organs (C15-C26)	378	0	0	0	0	0	0	1	9	40	56	95	177	0
Malignant neoplasms of respiratory and intrathoracic organs (C30-C39)	478	0	0	0	0	0	1	0	6	43	103	126	199	0
Malignant neoplasms of breast (C50)	119	0	0	0	0	0	0	0	9	13	22	23	52	0
Malignant neoplasms of female genital organs, (C51-C58)	66	0	0	0	0	0	0	0	3	5	13	21	24	0
Malignant neoplasms of male genital organs, (C60-C63)	69	0	0	0	0	0	0	0	0	0	5	19	45	0
Malignant neoplasms of urinary tract (C64-C68)	80	0	0	0	0	0	0	0	0	4	9	24	43	0
Malignant neoplasms of meninges, brain, and other parts of central nervous system (C70-C72)	34	0	0	0	0	0	0	2	2	4	5	10	11	0
Malignant neoplasms of lymphoid, hematopoietic, and related tissues (C81-C96)	121	1	0	0	1	1	0	4	6	6	21	27	54	0
All other and unspecified malignant neoplasms (C40-C49, C69, C73-C80,C97)	190	0	0	0	0	0	0	1	6	6	29	50	98	0
Cerebrovascular Diseases (I60-I69)	284	0	0	0	1	0	1	0	4	7	14	48	209	0

TABLE F-19 (continued)
(2007 - White, Both Sexes)

	Age of Decedent													
	Total	< 1	1-4	5-9	10-14	15-19	20-24	25-34	35-44	45-54	55-64	65-74	75+	Unk
Chronic Lower Respiratory Diseases (J40-J47)	340	0	0	0	0	0	0	0	3	12	30	72	223	0
Accidents (unintentional injuries) (V01-X59, Y85-Y86)	258	2	1	1	1	15	19	35	38	41	28	15	62	0
Motor Vehicle Accidents (V02-V04, (V09.0,V09.2,V12-V14, V19.0-V19.2, V19.4-V19.6,V20-V79, V80.3-V80.5, V81.0-V81.1, V82.0-V82.1, V83-V86, V87.0-V87.8, V88.0-V88.8,V89.0,V89.2)	89	0	0	0	1	11	13	15	11	14	8	7	9	0
Nontransport Accidents (W00-X59, Y86)	158	1	1	0	0	4	6	19	26	24	16	8	53	0
Diabetes Mellitus (E10-E14)	153	0	0	0	0	0	0	0	1	7	18	27	100	0
Influenza and pneumonia (J10-J18)	100	0	2	0	0	0	0	0	1	3	3	13	78	0
Alzheimer's Disease (G30)	181	0	0	0	0	0	0	0	0	0	2	11	168	0
Nephritis, Nephrotic Syndrome, and Nephrosis (N00-N07, N17-N19, N25-N27)	119	0	0	0	0	0	0	0	2	1	10	21	85	0
Septicemia (A40-A41)	87	3	0	0	0	1	0	0	4	5	11	13	50	0
Intentional self-harm (suicide) (X60-X84, Y87.0)	84	0	0	0	0	4	5	4	19	28	10	6	8	0
Chronic liver disease and Cirrhosis (K70, K73-K74)	58	0	0	0	0	0	0	1	8	20	11	8	10	0
Essential (primary) hypertension and hypertensive renal disease (I10, I12)	33	0	0	0	0	0	0	0	0	2	0	4	27	0
Aortic aneurysm and dissection (I71)	22	0	0	0	0	0	0	0	2	1	2	4	13	0
Assault (homicide) (X85-Y09, Y87.1)	15	1	0	0	0	0	2	4	3	5	0	0	0	0
Human immunodeficiency virus (HIV) (B20-B24)	14	0	0	0	0	0	0	1	7	4	1	1	0	0
Certain conditions originating in the perinatal period (P00-P96)	27	27	0	0	0	0	0	0	0	0	0	0	0	0
Congenital malformations, deformations, and chromosomal abnormalities (Q00-Q99)	14	10	0	0	0	0	0	0	1	1	0	1	1	0
All Other Causes	1043	8	0	1	1	1	2	19	22	58	85	124	722	0
TOTAL	5985	52	4	2	4	23	32	77	199	420	646	988	3536	2

LCDAGWHT

Note:

*ICD Codes, Tenth Revision.

Source:

Delaware Health Statistics Center

TABLE F-20
NUMBER OF DEATHS BY AGE FOR SELECTED LEADING CAUSES OF DEATH
DELAWARE, 2007
(WHITE MALES)

Cause of Death*	Age of Decedent													
	Total	< 1	1-4	5-9	10-14	15-19	20-24	25-34	35-44	45-54	55-64	65-74	75+	Unk
Diseases of the Heart (I00-I09, I11, I13, I20-I51)	836	0	0	0	0	1	0	3	28	78	116	150	459	1
Acute rheumatic fever and chronic rheumatic heart disease (I00-I09)	3	0	0	0	0	0	0	0	0	0	0	1	2	0
Hypertensive heart disease (I11)	25	0	0	0	0	0	0	0	3	5	5	5	7	0
Hypertensive heart and renal disease (I13)	4	0	0	0	0	0	0	0	0	0	0	0	4	0
Ischemic heart disease (I20-I25)	605	0	0	0	0	0	0	3	14	57	95	107	329	0
All other forms of heart disease (I26-I51)	199	0	0	0	0	1	0	0	11	16	16	37	117	1
Malignant Neoplasms (C00-C97)	790	1	0	0	1	0	1	7	16	64	147	207	346	0
Malignant neoplasms of lip, oral and pharynx (C00-C14)	7	0	0	0	0	0	0	0	0	1	3	2	1	0
Malignant neoplasms of digestive organs (C15-C26)	208	0	0	0	0	0	0	1	4	29	41	48	85	0
Malignant neoplasms of respiratory and intrathoracic organs (C30-C39)	249	0	0	0	0	0	1	0	4	24	57	65	98	0
Malignant neoplasms of breast (C50)	1	0	0	0	0	0	0	0	0	0	0	0	1	0
Malignant neoplasms of male genital organs, (C60-C63)	69	0	0	0	0	0	0	0	0	0	5	19	45	0
Malignant neoplasms of urinary tract (C64-C68)	61	0	0	0	0	0	0	0	0	2	7	20	32	0
Malignant neoplasms of meninges, brain, and other parts of central nervous system (C70-C72)	17	0	0	0	0	0	0	1	1	2	4	5	4	0
Malignant neoplasms of lymphoid, hematopoietic, and related tissues (C81-C96)	78	1	0	0	1	0	0	4	5	3	12	19	33	0
All other and unspecified malignant neoplasms (C40-C49, C69, C73-C80, C97)	100	0	0	0	0	0	0	1	2	3	18	29	47	0
Cerebrovascular Diseases (I60-I69)	97	0	0	0	1	0	1	0	0	3	10	30	52	0

TABLE F-20 (continued)
(2007 - White Males)

	Age of Decedent													
	Total	< 1	1-4	5-9	10-14	15-19	20-24	25-34	35-44	45-54	55-64	65-74	75+	Unk
Chronic Lower Respiratory Diseases (J40-J47)	154	0	0	0	0	0	0	0	0	5	22	35	92	0
Accidents (unintentional injuries) (V01-X59, Y85-Y86)	178	0	1	1	1	11	16	27	32	30	22	9	28	0
Motor Vehicle Accidents (V02-V04, (V09.0,V09.2,V12-V14, V19.0-V19.2, V19.4-V19.6,V20-V79, V80.3-V80.5, V81.0-V81.1, V82.0-V82.1, V83-V86, V87.0-V87.8, V88.0-V88.8,V89.0,V89.2)	73	0	0	0	1	7	13	13	10	12	6	4	7	0
Nontransport Accidents (W00-X59, Y86)	96	0	1	0	0	4	3	13	21	16	12	5	21	0
Diabetes Mellitus (E10-E14)	84	0	0	0	0	0	0	0	1	4	10	19	50	0
Influenza and pneumonia (J10-J18)	42	0	1	0	0	0	0	0	1	2	1	6	31	0
Alzheimer's Disease (G30)	60	0	0	0	0	0	0	0	0	0	1	5	54	0
Nephritis, Nephrotic Syndrome, and Nephrosis (N00-N07, N17-N19, N25-N27)	62	0	0	0	0	0	0	0	2	1	6	10	43	0
Septicemia (A40-A41)	47	1	0	0	0	1	0	0	3	5	5	7	25	0
Intentional self-harm (suicide) (X60-X84, Y87.0)	61	0	0	0	0	1	5	2	13	23	8	4	5	0
Chronic liver disease and Cirrhosis (K70, K73-K74)	30	0	0	0	0	0	0	0	6	11	4	3	6	0
Essential (primary) hypertension and hypertensive renal disease (I10, I12)	11	0	0	0	0	0	0	0	0	1	0	3	7	0
Aortic aneurysm and dissection (I71)	13	0	0	0	0	0	0	0	2	1	0	2	8	0
Assault (homicide) (X85-Y09, Y87.1)	8	0	0	0	0	0	1	2	2	3	0	0	0	0
Human immunodeficiency virus (HIV) (B20-B24)	13	0	0	0	0	0	0	1	6	4	1	1	0	0
Certain conditions originating in the perinatal period (P00-P96)	15	15	0	0	0	0	0	0	0	0	0	0	0	0
Congenital malformations, deformations, and chromosomal abnormalities (Q00-Q99)	8	5	0	0	0	0	0	0	1	0	0	1	1	0
All Other Causes	469	5	0	0	1	0	1	17	14	37	55	69	270	0
TOTAL	2978	27	2	1	4	14	25	59	127	272	408	561	1477	1

LCDAGEWM

Note:

*ICD Codes, Tenth Revision.

Source:

Delaware Health Statistics Center

TABLE F-21
NUMBER OF DEATHS BY AGE FOR SELECTED LEADING CAUSES OF DEATH
DELAWARE, 2007
(WHITE FEMALES)

Cause of Death*	Age of Decedent													
	Total	< 1	1-4	5-9	10-14	15-19	20-24	25-34	35-44	45-54	55-64	65-74	75+	Unk
Diseases of the Heart (I00-I09, I11, I13, I20-I51)	764	0	1	0	0	0	2	2	15	23	37	71	612	1
Acute rheumatic fever and chronic rheumatic heart disease (I00-I09)	10	0	0	0	0	0	0	0	0	0	2	2	6	0
Hypertensive heart disease (I11)	31	0	0	0	0	0	0	0	3	3	3	2	20	0
Hypertensive heart and renal disease (I13)	3	0	0	0	0	0	0	0	0	0	0	1	2	0
Ischemic heart disease (I20-I25)	453	0	0	0	0	0	0	0	4	13	23	40	372	1
All other forms of heart disease (I26-I51)	267	0	1	0	0	0	2	2	8	7	9	26	212	0
Malignant Neoplasms (C00-C97)	763	0	0	0	0	1	0	1	25	60	121	192	363	0
Malignant neoplasms of lip, oral and pharynx (C00-C14)	11	0	0	0	0	0	0	0	0	2	2	2	5	0
Malignant neoplasms of digestive organs (C15-C26)	170	0	0	0	0	0	0	0	5	11	15	47	92	0
Malignant neoplasms of respiratory and intrathoracic organs (C30-C39)	229	0	0	0	0	0	0	0	2	19	46	61	101	0
Malignant neoplasms of breast (C50)	118	0	0	0	0	0	0	0	9	13	22	23	51	0
Malignant neoplasms of female genital organs, (C51-C58)	66	0	0	0	0	0	0	0	3	5	13	21	24	0
Malignant neoplasms of urinary tract (C64-C68)	19	0	0	0	0	0	0	0	0	2	2	4	11	0
Malignant neoplasms of meninges, brain, and other parts of central nervous system (C70-C72)	17	0	0	0	0	0	0	1	1	2	1	5	7	0
Malignant neoplasms of lymphoid, hematopoietic, and related tissues (C81-C96)	43	0	0	0	0	1	0	0	1	3	9	8	21	0
All other and unspecified malignant neoplasms (C40-C49, C69, C73-C80,C97)	90	0	0	0	0	0	0	0	4	3	11	21	51	0
Cerebrovascular Diseases (I60-I69)	187	0	0	0	0	0	0	0	4	4	4	18	157	0

TABLE F-21 (continued)
(2007 - White Females)

	Age of Decedent													Unk
	Total	< 1	1-4	5-9	10-14	15-19	20-24	25-34	35-44	45-54	55-64	65-74	75+	
Chronic Lower Respiratory Diseases (J40-J47)	186	0	0	0	0	0	0	0	3	7	8	37	131	0
Accidents (unintentional injuries) (V01-X59, Y85-Y86)	80	2	0	0	0	4	3	8	6	11	6	6	34	0
Motor Vehicle Accidents (V02-V04, (V09.0,V09.2,V12-V14, V19.0-V19.2, V19.4-V19.6,V20-V79, V80.3-V80.5, V81.0-V81.1, V82.0-V82.1, V83-V86, V87.0-V87.8, V88.0-V88.8,V89.0,V89.2)	16	0	0	0	0	4	0	2	1	2	2	3	2	0
Nontransport Accidents (W00-X59, Y86)	62	1	0	0	0	0	3	6	5	8	4	3	32	0
Diabetes Mellitus (E10-E14)	69	0	0	0	0	0	0	0	0	3	8	8	50	0
Influenza and pneumonia (J10-J18)	58	0	1	0	0	0	0	0	0	1	2	7	47	0
Alzheimer's Disease (G30)	121	0	0	0	0	0	0	0	0	0	1	6	114	0
Nephritis, Nephrotic Syndrome, and Nephrosis (N00-N07, N17-N19, N25-N27)	57	0	0	0	0	0	0	0	0	0	4	11	42	0
Septicemia (A40-A41)	40	2	0	0	0	0	0	0	1	0	6	6	25	0
Intentional self-harm (suicide) (X60-X84, Y87.0)	23	0	0	0	0	3	0	2	6	5	2	2	3	0
Chronic liver disease and Cirrhosis (K70, K73-K74)	28	0	0	0	0	0	0	1	2	9	7	5	4	0
Essential (primary) hypertension and hypertensive renal disease (I10, I12)	22	0	0	0	0	0	0	0	0	1	0	1	20	0
Aortic aneurysm and dissection (I71)	9	0	0	0	0	0	0	0	0	0	2	2	5	0
Assault (homicide) (X85-Y09, Y87.1)	7	1	0	0	0	0	1	2	1	2	0	0	0	0
Human immunodeficiency virus (HIV) (B20-B24)	1	0	0	0	0	0	0	0	1	0	0	0	0	0
Certain conditions originating in the perinatal period (P00-P96)	12	12	0	0	0	0	0	0	0	0	0	0	0	0
Congenital malformations, deformations, and chromosomal abnormalities (Q00-Q99)	6	5	0	0	0	0	0	0	0	1	0	0	0	0
All Other Causes	574	3	0	1	0	1	1	2	8	21	30	55	452	0
TOTAL	3007	25	2	1	0	9	7	18	72	148	238	427	2059	1

LCDAGEWF

Note:

*ICD Codes, Tenth Revision.

Source:

Delaware Health Statistics Center

TABLE F-22
NUMBER OF DEATHS BY AGE FOR SELECTED LEADING CAUSES OF DEATH
DELAWARE, 2007
(BLACK, BOTH SEXES)

Cause of Death*	Age of Decedent													
	Total	< 1	1-4	5-9	10-14	15-19	20-24	25-34	35-44	45-54	55-64	65-74	75+	Unk
Diseases of the Heart (I00-I09, I11, I13, I20-I51)	280	0	1	0	0	0	1	2	14	42	50	54	116	0
Acute rheumatic fever and chronic rheumatic heart disease (I00-I09)	0	0	0	0	0	0	0	0	0	0	0	0	0	0
Hypertensive heart disease (I11)	16	0	0	0	0	0	0	1	2	5	2	2	4	0
Hypertensive heart and renal disease (I13)	6	0	0	0	0	0	0	0	0	1	0	3	2	0
Ischemic heart disease (I20-I25)	178	0	0	0	0	0	0	0	7	25	34	35	77	0
All other forms of heart disease (I26-I51)	80	0	1	0	0	0	1	1	5	11	14	14	33	0
Malignant Neoplasms (C00-C97)	257	0	0	0	0	0	1	2	11	53	53	59	77	1
Malignant neoplasms of lip, oral and pharynx (C00-C14)	2	0	0	0	0	0	0	0	1	0	1	0	0	0
Malignant neoplasms of digestive organs (C15-C26)	61	0	0	0	0	0	0	1	0	13	15	14	18	0
Malignant neoplasms of respiratory and intrathoracic organs (C30-C39)	72	0	0	0	0	0	0	0	2	11	14	25	19	1
Malignant neoplasms of breast (C50)	19	0	0	0	0	0	0	0	4	6	5	2	2	0
Malignant neoplasms of female genital organs, (C51-C58)	18	0	0	0	0	0	0	0	0	5	4	4	5	0
Malignant neoplasms of male genital organs, (C60-C63)	19	0	0	0	0	0	0	0	0	0	1	4	14	0
Malignant neoplasms of urinary tract (C64-C68)	10	0	0	0	0	0	1	0	0	2	3	0	4	0
Malignant neoplasms of meninges, brain, and other parts of central nervous system (C70-C72)	1	0	0	0	0	0	0	0	1	0	0	0	0	0
Malignant neoplasms of lymphoid, hematopoietic, and related tissues (C81-C96)	25	0	0	0	0	0	0	1	1	7	5	5	6	0
All other and unspecified malignant neoplasms (C40-C49, C69, C73-C80,C97)	30	0	0	0	0	0	0	0	2	9	5	5	9	0
Cerebrovascular Diseases (I60-I69)	76	0	0	0	0	0	0	1	0	10	8	20	37	0

TABLE F-22 (continued)
(2007 - Black, Both Sexes)

	Age of Decedent													
	Total	< 1	1-4	5-9	10-14	15-19	20-24	25-34	35-44	45-54	55-64	65-74	75+	Unk
Chronic Lower Respiratory Diseases (J40-J47)	35	1	0	0	0	0	0	0	1	1	3	13	16	0
Accidents (unintentional injuries) (V01-X59, Y85-Y86)	40	0	0	0	0	4	6	6	8	4	4	2	6	0
Motor Vehicle Accidents (V02-V04, (V09.0,V09.2,V12-V14, V19.0-V19.2, V19.4-V19.6,V20-V79, V80.3-V80.5, V81.0-V81.1, V82.0-V82.1, V83-V86, V87.0-V87.8, V88.0-V88.8,V89.0,V89.2)	22	0	0	0	0	2	6	5	4	4	1	0	0	0
Nontransport Accidents (W00-X59, Y86)	18	0	0	0	0	2	0	1	4	0	3	2	6	0
Diabetes Mellitus (E10-E14)	67	0	0	0	0	0	1	1	3	6	10	23	23	0
Influenza and pneumonia (J10-J18)	12	0	0	0	0	0	0	0	0	0	2	2	8	0
Alzheimer's Disease (G30)	16	0	0	0	0	0	0	0	0	0	0	2	14	0
Nephritis, Nephrotic Syndrome, and Nephrosis (N00-N07, N17-N19, N25-N27)	41	0	0	0	0	0	0	1	1	1	6	13	19	0
Septicemia (A40-A41)	22	1	0	0	0	0	0	1	1	1	4	5	9	0
Intentional self-harm (suicide) (X60-X84, Y87.0)	6	0	0	0	0	0	0	1	3	1	1	0	0	0
Chronic liver disease and Cirrhosis (K70, K73-K74)	9	0	0	0	0	0	0	0	1	4	3	1	0	0
Essential (primary) hypertension and hypertensive renal disease (I10, I12)	12	0	0	0	0	0	0	0	0	2	0	5	5	0
Aortic aneurysm and dissection (I71)	4	0	0	0	0	0	0	0	0	0	0	1	3	0
Assault (homicide) (X85-Y09, Y87.1)	27	1	0	0	0	5	8	5	7	0	1	0	0	0
Human immunodeficiency virus (HIV) (B20-B24)	41	0	0	0	0	0	0	0	13	17	10	0	1	0
Certain conditions originating in the perinatal period (P00-P96)	24	24	0	0	0	0	0	0	0	0	0	0	0	0
Congenital malformations, deformations, and chromosomal abnormalities (Q00-Q99)	4	3	0	0	0	0	0	0	1	0	0	0	0	0
All Other Causes	207	7	1	0	1	1	3	3	13	20	23	29	105	1
TOTAL	1180	37	2	0	1	10	20	23	77	162	178	229	439	2

LCDAGBLK

Note:

*ICD Codes, Tenth Revision.

Source:

Delaware Health Statistics Center

TABLE F-23
NUMBER OF DEATHS BY AGE FOR SELECTED LEADING CAUSES OF DEATH
DELAWARE, 2007
(BLACK MALES)

Cause of Death*	Age of Decedent													
	Total	< 1	1-4	5-9	10-14	15-19	20-24	25-34	35-44	45-54	55-64	65-74	75+	Unk
Diseases of the Heart (I00-I09, I11, I13, I20-I51)	150	0	0	0	0	0	1	0	10	29	35	36	39	0
Acute rheumatic fever and chronic rheumatic heart disease (I00-I09)	0	0	0	0	0	0	0	0	0	0	0	0	0	0
Hypertensive heart disease (I11)	11	0	0	0	0	0	0	0	2	4	2	2	1	0
Hypertensive heart and renal disease (I13)	4	0	0	0	0	0	0	0	0	1	0	2	1	0
Ischemic heart disease (I20-I25)	98	0	0	0	0	0	0	0	5	20	25	22	26	0
All other forms of heart disease (I26-I51)	37	0	0	0	0	0	1	0	3	4	8	10	11	0
Malignant Neoplasms (C00-C97)	128	0	0	0	0	0	1	1	4	21	28	34	39	0
Malignant neoplasms of lip, oral and pharynx (C00-C14)	2	0	0	0	0	0	0	0	1	0	1	0	0	0
Malignant neoplasms of digestive organs (C15-C26)	30	0	0	0	0	0	0	0	0	6	7	10	7	0
Malignant neoplasms of respiratory and intrathoracic organs (C30-C39)	37	0	0	0	0	0	0	0	0	7	8	14	8	0
Malignant neoplasms of breast (C50)	0	0	0	0	0	0	0	0	0	0	0	0	0	0
Malignant neoplasms of male genital organs, (C60-C63)	19	0	0	0	0	0	0	0	0	0	1	4	14	0
Malignant neoplasms of urinary tract (C64-C68)	7	0	0	0	0	0	1	0	0	1	3	0	2	0
Malignant neoplasms of meninges, brain, and other parts of central nervous system (C70-C72)	1	0	0	0	0	0	0	0	1	0	0	0	0	0
Malignant neoplasms of lymphoid, hematopoietic, and related tissues (C81-C96)	16	0	0	0	0	0	0	1	1	4	5	4	1	0
All other and unspecified malignant neoplasms (C40-C49, C69, C73-C80,C97)	16	0	0	0	0	0	0	0	1	3	3	2	7	0
Cerebrovascular Diseases (I60-I69)	40	0	0	0	0	0	0	1	0	7	6	11	15	0

TABLE F-23 (continued)
(2007 - Black Males)

	Age of Decedent													
	Total	< 1	1-4	5-9	10-14	15-19	20-24	25-34	35-44	45-54	55-64	65-74	75+	Unk
Chronic Lower Respiratory Diseases (J40-J47)	18	1	0	0	0	0	0	0	1	0	2	5	9	0
Accidents (unintentional injuries) (V01-X59, Y85-Y86)	26	0	0	0	0	4	4	4	6	2	2	1	3	0
Motor Vehicle Accidents (V02-V04, (V09.0,V09.2,V12-V14, V19.0-V19.2, V19.4-V19.6,V20-V79, V80.3-V80.5, V81.0-V81.1, V82.0-V82.1, V83-V86, V87.0-V87.8, V88.0-V88.8,V89.0,V89.2)	15	0	0	0	0	2	4	4	3	2	0	0	0	0
Nontransport Accidents (W00-X59, Y86)	11	0	0	0	0	2	0	0	3	0	2	1	3	0
Diabetes Mellitus (E10-E14)	32	0	0	0	0	0	0	1	2	3	7	12	7	0
Influenza and pneumonia (J10-J18)	8	0	0	0	0	0	0	0	0	0	1	1	6	0
Alzheimer's Disease (G30)	7	0	0	0	0	0	0	0	0	0	0	2	5	0
Nephritis, Nephrotic Syndrome, and Nephrosis (N00-N07, N17-N19, N25-N27)	22	0	0	0	0	0	0	0	0	0	5	6	11	0
Septicemia (A40-A41)	7	0	0	0	0	0	0	0	0	1	1	2	3	0
Intentional self-harm (suicide) (X60-X84, Y87.0)	5	0	0	0	0	0	0	0	3	1	1	0	0	0
Chronic liver disease and Cirrhosis (K70, K73-K74)	7	0	0	0	0	0	0	0	1	3	2	1	0	0
Essential (primary) hypertension and hypertensive renal disease (I10, I12)	7	0	0	0	0	0	0	0	0	1	0	5	1	0
Aortic aneurysm and dissection (I71)	1	0	0	0	0	0	0	0	0	0	0	1	0	0
Assault (homicide) (X85-Y09, Y87.1)	25	1	0	0	0	5	7	5	6	0	1	0	0	0
Human immunodeficiency virus (HIV) (B20-B24)	20	0	0	0	0	0	0	0	3	11	5	0	1	0
Certain conditions originating in the perinatal period (P00-P96)	14	14	0	0	0	0	0	0	0	0	0	0	0	0
Congenital malformations, deformations, and chromosomal abnormalities (Q00-Q99)	1	1	0	0	0	0	0	0	0	0	0	0	0	0
All Other Causes	88	3	1	0	1	1	2	2	4	12	11	15	35	1
TOTAL	606	20	1	0	1	10	15	14	40	91	107	132	174	1

LCDAGEBM

Note:

*ICD Codes, Tenth Revision.

Source:

Delaware Health Statistics Center

TABLE F-24
NUMBER OF DEATHS BY AGE FOR SELECTED LEADING CAUSES OF DEATH
DELAWARE, 2007
(BLACK FEMALES)

Cause of Death*	Age of Decedent													Unk
	Total	< 1	1-4	5-9	10-14	15-19	20-24	25-34	35-44	45-54	55-64	65-74	75+	
Diseases of the Heart (I00-I09, I11, I13, I20-I51)	130	0	1	0	0	0	0	2	4	13	15	18	77	0
Acute rheumatic fever and chronic rheumatic heart disease (I00-I09)	0	0	0	0	0	0	0	0	0	0	0	0	0	0
Hypertensive heart disease (I11)	5	0	0	0	0	0	0	1	0	1	0	0	3	0
Hypertensive heart and renal disease (I13)	2	0	0	0	0	0	0	0	0	0	0	1	1	0
Ischemic heart disease (I20-I25)	80	0	0	0	0	0	0	0	2	5	9	13	51	0
All other forms of heart disease (I26-I51)	43	0	1	0	0	0	0	1	2	7	6	4	22	0
Malignant Neoplasms (C00-C97)	129	0	0	0	0	0	0	1	7	32	25	25	38	1
Malignant neoplasms of lip, oral and pharynx (C00-C14)	0	0	0	0	0	0	0	0	0	0	0	0	0	0
Malignant neoplasms of digestive organs (C15-C26)	31	0	0	0	0	0	0	1	0	7	8	4	11	0
Malignant neoplasms of respiratory and intrathoracic organs (C30-C39)	35	0	0	0	0	0	0	0	2	4	6	11	11	1
Malignant neoplasms of breast (C50)	19	0	0	0	0	0	0	0	4	6	5	2	2	0
Malignant neoplasms of female genital organs, (C51-C58)	18	0	0	0	0	0	0	0	0	5	4	4	5	0
Malignant neoplasms of urinary tract (C64-C68)	3	0	0	0	0	0	0	0	0	1	0	0	2	0
Malignant neoplasms of meninges, brain, and other parts of central nervous system (C70-C72)	0	0	0	0	0	0	0	0	0	0	0	0	0	0
Malignant neoplasms of lymphoid, hematopoietic, and related tissues (C81-C96)	9	0	0	0	0	0	0	0	0	3	0	1	5	0
All other and unspecified malignant neoplasms (C40-C49, C69, C73-C80, C97)	14	0	0	0	0	0	0	0	1	6	2	3	2	0
Cerebrovascular Diseases (I60-I69)	36	0	0	0	0	0	0	0	0	3	2	9	22	0

TABLE F-24 (continued)
(2007 - Black Females)

	Age of Decedent													
	Total	< 1	1-4	5-9	10-14	15-19	20-24	25-34	35-44	45-54	55-64	65-74	75+	Unk
Chronic Lower Respiratory Diseases (J40-J47)	17	0	0	0	0	0	0	0	0	1	1	8	7	0
Accidents (unintentional injuries) (V01-X59, Y85-Y86)	14	0	0	0	0	0	2	2	2	2	2	1	3	0
Motor Vehicle Accidents (V02-V04, (V09.0,V09.2,V12-V14, V19.0-V19.2, V19.4-V19.6,V20-V79, V80.3-V80.5, V81.0-V81.1, V82.0-V82.1, V83-V86, V87.0-V87.8, V88.0-V88.8,V89.0,V89.2)	7	0	0	0	0	0	2	1	1	2	1	0	0	0
Nontransport Accidents (W00-X59, Y86)	7	0	0	0	0	0	0	1	1	0	1	1	3	0
Diabetes Mellitus (E10-E14)	35	0	0	0	0	0	1	0	1	3	3	11	16	0
Influenza and pneumonia (J10-J18)	4	0	0	0	0	0	0	0	0	0	1	1	2	0
Alzheimer's Disease (G30)	9	0	0	0	0	0	0	0	0	0	0	0	9	0
Nephritis, Nephrotic Syndrome, and Nephrosis (N00-N07, N17-N19, N25-N27)	19	0	0	0	0	0	0	1	1	1	1	7	8	0
Septicemia (A40-A41)	15	1	0	0	0	0	0	1	1	0	3	3	6	0
Intentional self-harm (suicide) (X60-X84, Y87.0)	1	0	0	0	0	0	0	1	0	0	0	0	0	0
Chronic liver disease and Cirrhosis (K70, K73-K74)	2	0	0	0	0	0	0	0	0	1	1	0	0	0
Essential (primary) hypertension and hypertensive renal disease (I10, I12)	5	0	0	0	0	0	0	0	0	1	0	0	4	0
Aortic aneurysm and dissection (I71)	3	0	0	0	0	0	0	0	0	0	0	0	3	0
Assault (homicide) (X85-Y09, Y87.1)	2	0	0	0	0	0	1	0	1	0	0	0	0	0
Human immunodeficiency virus (HIV) (B20-B24)	21	0	0	0	0	0	0	0	10	6	5	0	0	0
Certain conditions originating in the perinatal period (P00-P96)	10	10	0	0	0	0	0	0	0	0	0	0	0	0
Congenital malformations, deformations, and chromosomal abnormalities (Q00-Q99)	3	2	0	0	0	0	0	0	1	0	0	0	0	0
All Other Causes	119	4	0	0	0	0	1	1	9	8	12	14	70	0
TOTAL	574	17	1	0	0	0	5	9	37	71	71	97	265	1

Note:
*ICD Codes, Tenth Revision.

LCDAGEBF

Source:
Delaware Health Statistics Center

TABLE F-25
HIV INFECTION/AIDS¹ DEATHS BY COUNTY, RACE, HISPANIC² ORIGIN AND SEX
U.S., DELAWARE, AND COUNTIES, 1993-2007

Area/ Race	1993	1994	1995	1996	1997	1998	1999	2000	2001	2002	2003	2004	2005	2006	2007
Delaware	106	138	163	132	60	55	65	68	67	70	80	58	63	53	55
Males	82	115	132	101	45	47	49	46	47	51	58	36	43	33	33
White	38	47	55	36	10	8	14	11	10	14	18	7	8	9	13
Black	43	68	76	65	35	39	34	35	37	37	40	29	35	24	20
Females	24	23	31	31	15	8	16	22	20	19	22	22	20	20	22
White	7	4	8	5	1	1	2	2	1	6	3	6	2	1	1
Black	17	19	23	26	14	7	14	20	19	13	19	16	18	19	21
Kent	11	16	17	13	6	5	8	4	9	4	8	8	5	11	9
Males	9	12	14	9	6	3	5	0	5	4	7	5	2	7	5
White	5	4	7	4	1	0	3	0	2	0	2	2	0	1	2
Black	4	8	6	5	5	3	2	0	3	4	5	3	2	6	3
Females	2	4	3	4	0	2	3	4	4	0	1	3	3	4	4
White	1	2	0	2	0	0	0	2	0	0	1	0	0	0	0
Black	1	2	3	2	0	2	3	2	4	0	0	3	3	4	4
New Castle	85	100	121	109	49	44	45	54	52	56	69	46	51	34	39
Males	66	84	96	82	34	38	34	37	38	40	49	29	35	19	21
White	27	29	29	23	6	7	7	6	6	9	15	4	6	5	6
Black	38	55	67	59	28	31	27	31	32	31	34	25	29	14	15
Females	19	16	25	27	15	6	11	17	14	16	20	17	16	15	18
White	5	1	8	3	1	1	2	0	1	4	2	5	2	1	1
Black	14	15	17	24	14	5	9	17	13	12	18	12	14	14	17
Wilmington	50	56	71	68	27	28	23	35	37	28	43	25	33	19	22
Males	38	45	59	47	15	24	20	25	28	22	30	15	21	7	10
White	7	5	7	4	2	2	2	4	3	4	5	0	2	0	0
Black	30	40	52	43	13	22	18	21	25	18	25	15	19	7	10
Females	12	11	12	21	12	4	3	10	9	6	13	10	12	12	12
White	2	0	2	1	0	1	0	0	1	0	0	1	1	1	1
Black	10	11	10	20	12	3	3	10	8	6	13	9	11	11	11
Bal of NCCo	35	44	50	41	22	16	22	19	15	28	26	21	18	15	17
Males	28	39	37	35	19	14	14	12	10	18	19	14	14	12	11
White	20	24	22	19	4	5	5	2	3	5	10	4	4	5	6
Black	8	15	15	16	15	9	9	10	7	13	9	10	10	7	5
Females	7	5	13	6	3	2	8	7	5	10	7	7	4	3	6
White	3	1	6	2	1	0	2	0	0	4	2	4	1	0	0
Black	4	4	7	4	2	2	6	7	5	6	5	3	3	3	6
Sussex	10	22	25	10	5	6	12	10	6	10	3	4	7	8	7
Males	7	19	22	10	5	6	10	9	4	7	2	2	6	7	7
White	6	14	19	9	3	1	4	5	2	5	1	1	2	3	5
Black	1	5	3	1	2	5	5	4	2	2	1	1	4	4	2
Females	3	3	3	0	0	0	2	1	2	3	1	2	1	1	0
White	1	1	0	0	0	0	0	0	0	2	0	1	0	0	0
Black	2	2	3	0	0	0	2	1	2	1	1	1	1	1	0
Hispanic	4	3	11	5	1	3	1	1	3	4	2	1	2	1	1
Males	2	2	10	3	1	3	1	1	2	4	1	0	2	0	0
Females	2	1	1	2	0	0	0	0	1	0	1	1	0	1	1

Notes:

1. See Table F-12 for ICD-9 and ICD-10 Codes.
2. People of Hispanic origin may be of any race. See Hispanic Origin in the Technical Notes.

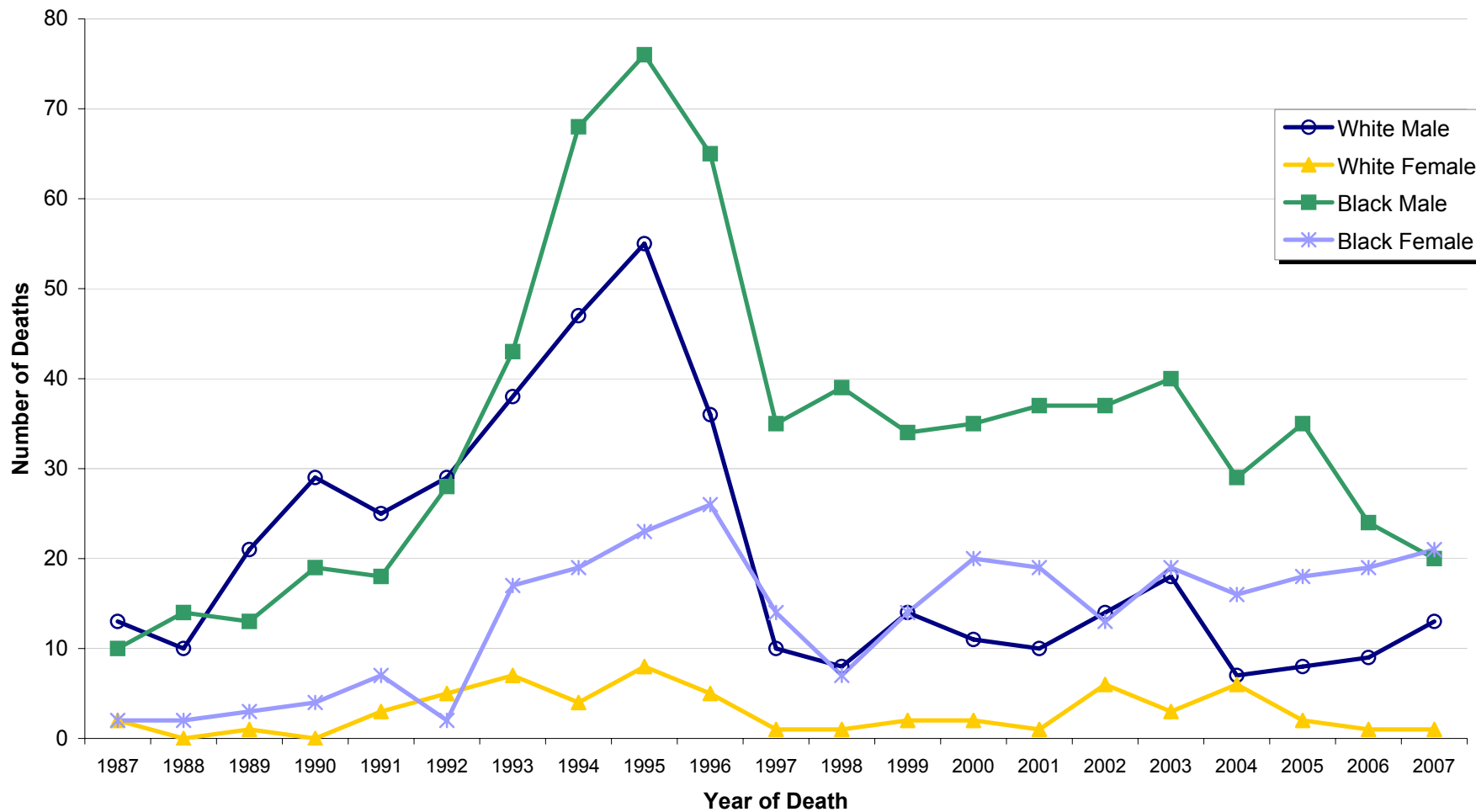
Sources:

Delaware Health Statistics Center
National Center for Health Statistics

AIDS

Figure F-3
Number of HIV Deaths by Race and Sex

Delaware, 1987-2007



Source: Delaware Health Statistics Center

TABLE F-26
NUMBER AND PERCENT OF DEATHS BY METHOD OF DISPOSITION AND RACE
DELAWARE, COUNTIES AND CITY OF WILMINGTON, 2007

Area/ Method of Disposition	Race							
	All Races		White		Black		Other	
	Number	Percent	Number	Percent	Number	Percent	Number	Percent
Delaware	7245	100.0	5985	100.0	1180	100.0	80	100.0
Burial	4184	57.8	3287	54.9	857	72.6	40	50.0
Cremation	2379	32.8	2105	35.2	238	20.2	36	45.0
Donation	48	0.7	45	0.8	3	0.3	0	0.0
Entombment	183	2.5	180	3.0	3	0.3	0	0.0
Removal from State	419	5.8	340	5.7	76	6.4	3	3.8
Unknown	32	0.4	28	0.5	3	0.3	1	1.3
Kent	1255	100.0	1018	100.0	219	100.0	18	100.0
Burial	771	61.4	581	57.1	179	81.7	11	61.1
Cremation	395	31.5	358	35.2	31	14.2	6	33.3
Donation	7	0.6	6	0.6	1	0.5	0	0.0
Entombment	10	0.8	10	1.0	0	0.0	0	0.0
Removal from State	67	5.3	59	5.8	7	3.2	1	5.6
Unknown	5	0.4	4	0.4	1	0.5	0	0.0
New Castle	4100	100.0	3294	100.0	770	100.0	36	100.0
Burial	2354	57.4	1825	55.4	517	67.1	12	33.3
Cremation	1282	31.3	1076	32.7	185	24.0	21	58.3
Donation	26	0.6	24	0.7	2	0.3	0	0.0
Entombment	153	3.7	150	4.6	3	0.4	0	0.0
Removal from State	273	6.7	210	6.4	61	7.9	2	5.6
Unknown	12	0.3	9	0.3	2	0.3	1	2.8
Wilmington	705	100.0	345	100.0	359	100.0	1	100.0
Burial	425	60.3	188	54.5	237	66.0	0	0.0
Cremation	209	29.6	115	33.3	93	25.9	1	100.0
Donation	4	0.6	4	1.2	0	0.0	0	0.0
Entombment	24	3.4	23	6.7	1	0.3	0	0.0
Removal from State	41	5.8	15	4.3	26	7.2	0	0.0
Unknown	2	0.3	0	0.0	2	0.6	0	0.0
Balance of NC County	3395	100.0	2949	100.0	411	100.0	35	100.0
Burial	1929	56.8	1637	55.5	280	68.1	12	34.3
Cremation	1073	31.6	961	32.6	92	22.4	20	57.1
Donation	22	0.6	20	0.7	2	0.5	0	0.0
Entombment	129	3.8	127	4.3	2	0.5	0	0.0
Removal from State	232	6.8	195	6.6	35	8.5	2	5.7
Unknown	10	0.3	9	0.3	0	0.0	1	2.9
Sussex	1890	100.0	1673	100.0	191	100.0	26	100.0
Burial	1059	56.0	881	52.7	161	84.3	17	65.4
Cremation	702	37.1	671	40.1	22	11.5	9	34.6
Donation	15	0.8	15	0.9	0	0.0	0	0.0
Entombment	20	1.1	20	1.2	0	0.0	0	0.0
Removal from State	79	4.2	71	4.2	8	4.2	0	0.0
Unknown	15	0.8	15	0.9	0	0.0	0	0.0

DISPRACE

Note:

Percentages are calculated based upon the total number of deaths in each race category.

Source:

Delaware Health Statistics Center

TABLE F-27
LIFE EXPECTANCY AT BIRTH* BY RACE AND SEX

DELAWARE, 1987-2007

Year	Race and Sex								
	All Races			White			Black		
	Both Sexes	Male	Female	Both Sexes	Male	Female	Both Sexes	Male	Female
2007	78.8	76.0	81.5	79.2	76.5	81.9	76.3	72.9	79.3
2006	78.4	75.7	81.0	79.1	76.4	81.7	74.8	71.4	77.8
2005	77.7	75.0	80.3	78.4	75.7	81.1	74.1	71.3	76.6
2004	77.8	74.9	80.5	78.3	75.5	80.9	73.8	70.4	77.0
2003	76.9	74.5	80.0	78.1	75.3	80.7	72.6	69.2	75.8
2002	77.3	74.6	79.8	77.8	75.4	80.1	73.8	69.5	77.9
2001	76.3	73.9	78.7	77.1	74.6	79.5	72.1	69.5	74.4
2000	76.5	73.9	79.0	77.1	74.5	79.6	72.5	69.4	75.5
1999	76.8	73.9	79.6	77.6	74.7	80.3	72.6	68.8	76.2
1998	75.9	73.3	78.4	77.0	74.5	79.4	70.3	66.9	73.5
1997	75.8	73.3	78.2	76.7	74.2	79.1	71.0	68.3	73.5
1996	75.4	72.5	78.1	76.7	73.9	79.4	68.8	65.2	72.2
1995	75.5	72.5	78.4	76.8	74.2	79.4	68.9	64.4	73.5
1994	75.1	71.4	78.7	76.1	72.6	79.6	69.5	65.0	74.1
1993	75.2	71.9	78.5	76.5	73.6	79.3	68.5	63.4	73.6
1992	75.4	72.4	78.2	76.3	73.5	78.9	70.3	66.2	74.3
1991	75.0	71.9	77.9	76.0	73.0	78.9	69.4	66.2	72.4
1990	75.0	71.9	77.9	76.0	73.2	78.8	69.3	65.4	73.1
1989	74.3	71.1	77.3	75.3	72.2	78.2	68.4	64.4	72.4
1988	74.2	70.9	77.3	75.1	71.9	78.2	68.8	65.0	72.6
1987	74.3	71.0	77.5	75.1	71.8	78.3	69.7	66.1	73.1

LIFE_TB1

Note:

*Life expectancy at birth is the average expected lifetime of people born in the listed year.

Source:

Delaware Health Statistics Center

TABLE F-28
AVERAGE REMAINING YEARS OF LIFE* BY AGE, RACE, AND SEX

DELAWARE, 2007

Age Group	Race and Sex								
	All Races			White			Black		
	Both Sexes	Male	Female	Both Sexes	Male	Female	Both Sexes	Male	Female
0-5	78.8	76.0	81.5	79.2	76.5	81.9	76.3	72.9	79.3
5-10	74.5	71.6	77.2	74.8	72.0	77.5	72.2	68.9	75.3
10-15	69.5	66.6	72.2	69.8	67.0	72.5	67.2	63.9	70.3
15-20	64.5	61.7	67.2	64.8	62.1	67.5	62.3	58.9	65.3
20-25	59.7	56.9	62.3	60.0	57.3	62.6	57.4	54.3	60.3
25-30	54.9	52.3	57.4	55.2	52.6	57.8	52.8	49.8	55.5
30-35	50.2	47.7	52.5	50.5	48.1	52.9	48.0	45.0	50.6
35-40	45.4	43.0	47.7	45.8	43.4	48.0	43.2	40.3	45.8
40-45	40.9	38.6	43.0	41.2	39.0	43.3	38.7	35.8	41.2
45-50	36.4	34.1	38.4	36.7	34.5	38.7	34.3	31.4	36.8
50-55	32.0	30.0	33.9	32.3	30.3	34.1	30.2	27.5	32.5
55-60	27.8	25.9	29.5	28.0	26.2	29.7	26.2	23.6	28.5
60-65	23.7	21.9	25.2	23.9	22.2	25.3	22.4	20.0	24.5
65-70	19.8	18.3	21.1	20.0	18.5	21.1	18.7	16.6	20.4
70-75	16.2	14.9	17.3	16.3	15.0	17.3	15.8	13.9	17.1
75-80	13.0	11.9	13.8	13.0	12.0	13.8	13.0	11.5	14.0
80-85	10.3	9.3	10.9	10.2	9.2	10.8	10.8	9.7	11.4
85+	8.0	7.3	8.4	7.9	7.2	8.3	9.3	8.4	9.7

LIFE_TB2

Note:

*Average number of years of life remaining at the beginning of the age interval.

Source:

Delaware Health Statistics Center

TABLE F-29
MATERNAL DEATHS

DELAWARE AND COUNTIES, 1982-2007

Year	Area			
	Delaware	Kent	New Castle	Sussex
2007	1	0	1	0
2006	1	0	1	0
2005	1	0	1	0
2004	1	0	1	0
2003	2	0	2	0
2002	0	0	0	0
2001	2	0	1	1
2000	3	1	2	0
1999	1	0	1	0
1998	2	0	2	0
1997	1	0	1	0
1996	0	0	0	0
1995	0	0	0	0
1994	0	0	0	0
1993	0	0	0	0
1992	0	0	0	0
1991	1	0	0	1
1990	0	0	0	0
1989	2	0	1	1
1988	1	0	1	0
1987	0	0	0	0
1986	0	0	0	0
1985	1	0	1	0
1984	0	0	0	0
1983	0	0	0	0
1982	1	0	1	0

MATERNAL

Note:

Prior to 1999, maternal deaths included ICD-9 categories 630-676. For 1999 and later, maternal deaths include ICD-10 categories O00-O99, and A34.

Source:

Delaware Health Statistics Center

TABLE F-30
 FIVE-YEAR AGE-ADJUSTED MORTALITY RATES FOR SELECTED CAUSES OF DEATH
 DELAWARE AND COUNTIES, 2003-2007

LEADING CAUSES OF DEATH	AREA				RACE	
	DE	Kent	NCC	Sussex	White	Black
Diseases of the heart	214.5	264.7	208.7	200.7	208.0	261.7
Malignant neoplasms	193.3	210.1	190.8	191.5	190.6	218.5
Cerebrovascular diseases	41.4	42.9	46.7	30.3	38.8	58.6
Chronic lower respiratory diseases	39.7	51.7	38.7	36.0	41.1	31.5
Accidents (unintentional injuries)	34.8	39.7	31.5	42.5	37.9	26.0
Diabetes mellitus	23.9	29.2	24.1	20.9	20.7	45.5
Dementia	19.8	15.4	24.5	12.4	18.7	29.2
Alzheimer's disease	19.2	16.1	18.3	22.6	19.6	15.3
Nephritis, nephrotic syndrome, and nephrosis	15.3	15.9	16.1	13.2	13.1	30.3
Influenza and pneumonia	15.0	18.3	12.8	17.8	15.0	15.2
Septicemia	13.3	18.2	13.8	10.3	12.1	21.4
Intentional self-harm (suicide)	10.4	9.9	10.4	11.0	12.3	4.5
Other diseases of respiratory system	8.8	10.7	8.2	8.7	8.9	7.2
Chronic liver disease and cirrhosis	8.5	9.8	8.0	9.2	9.0	6.4
Human immunodeficiency virus (HIV)	7.2	5.9	8.8	3.5	2.1	28.9
Certain conditions originating in the perinatal period	7.1	5.2	7.7	6.8	4.7	14.4
Pneumonitis due to solids and liquids	6.3	3.9	6.5	7.2	6.1	7.9
Essential (primary) hypertension and hypertensive renal disease	6.3	7.9	6.8	4.5	5.2	13.9
Parkinson's disease	5.6	4.4	6.3	4.8	6.0	NA
Assault (homicide)	5.0	3.6	6.0	2.9	2.4	14.0
Aortic aneurysm and dissection	4.5	5.5	3.8	5.5	4.4	5.0
Congenital malformations, deformations, and chromosomal abnormalities	2.8	2.8	2.7	3.5	2.8	2.9

AADR

Notes:

1. Rates per 100,000, adjusted to U.S. 2000 population.
2. See Appendix E for ICD-10 cause of death codes.
3. "NA" indicates rate does not meet standards of reliability or precision; based on fewer than 20 deaths in the numerator.

Source:

Delaware Health Statistics Center

TABLE F-31
 FIVE-YEAR AGE-ADJUSTED MORTALITY RATES FOR SELECTED LEADING CAUSES OF DEATH
 DELAWARE AND COUNTIES, 1987-2007

Cause of Death/ Area	1987 -1991	1988 -1992	1989 -1993	1990 -1994	1991 -1995	1992 -1996	1993 -1997	1994 -1998	1995 -1999	1996 -2000	1997 -2001	1998 -2002	1999 -2003	2000 -2004	2001 -2005	2002 -2006	2003 -2007
Diseases of the Heart																	
Delaware	362.6	346.1	331.0	321.8	313.7	306.8	301.5	292.0	283.5	275.0	267.2	257.4	252.1	243.9	236.3	223.5	214.5
Kent	379.9	353.1	335.8	331.8	322.2	317.1	316.8	313.3	312.5	308.2	304.1	297.0	291.3	280.2	276.5	269.1	264.7
New Castle	359.2	343.4	328.7	317.6	309.7	303.0	296.8	287.6	276.4	267.0	259.4	250.5	245.4	239.1	231.9	218.0	208.7
Sussex	363.9	351.8	336.8	328.5	320.4	311.3	305.1	290.7	284.5	276.1	265.5	252.4	247.4	236.6	225.7	211.7	200.7
Malignant Neoplasms																	
Delaware	242.0	242.5	242.5	242.7	240.0	238.9	236.1	231.1	228.1	221.1	217.9	210.6	206.4	202.4	200.8	194.5	193.3
Kent	245.3	241.2	235.8	229.2	230.1	230.6	222.3	222.5	228.7	220.4	221.8	219.0	217.9	212.1	214.4	207.4	210.1
New Castle	241.8	243.4	242.1	245.2	242.0	240.1	238.1	235.2	230.5	223.3	219.7	212.3	206.1	202.1	200.9	193.6	190.8
Sussex	241.6	241.3	249.7	245.8	242.3	241.9	241.1	227.5	223.4	217.9	213.1	203.9	202.1	198.8	194.6	191.3	191.5
Cerebrovascular Diseases																	
Delaware	58.8	58.8	58.5	57.6	56.3	53.7	52.6	52.0	50.8	51.8	51.6	51.7	51.0	48.8	45.8	44.0	41.4
Kent	66.9	68.5	68.5	68.4	66.3	69.2	70.0	68.9	63.4	60.6	55.0	55.8	53.8	50.7	49.7	48.8	42.9
New Castle	56.7	56.2	55.9	56.3	54.0	51.7	49.7	49.8	50.0	53.1	53.7	53.9	54.0	52.2	49.0	47.5	46.7
Sussex	58.8	59.3	59.1	54.3	56.1	49.6	49.5	47.2	45.5	44.1	45.1	44.4	43.1	40.9	37.2	34.4	30.3
Chronic Lower Respiratory Diseases																	
Delaware	36.8	37.4	39.1	39.8	39.7	40.2	40.4	40.9	41.4	42.5	41.9	42.2	41.2	40.4	40.8	40.5	39.7
Kent	43.0	42.7	43.4	45.7	46.3	49.3	52.8	53.9	54.2	52.4	49.4	45.1	44.7	45.8	49.1	49.9	51.7
New Castle	34.3	34.4	34.9	34.8	34.8	35.8	37.2	38.1	39.1	41.5	41.8	41.4	40.4	39.8	39.1	38.8	38.7
Sussex	39.7	42.3	47.8	50.0	48.7	45.9	40.9	39.6	38.9	38.7	37.7	41.9	40.7	38.6	40.1	39.0	36.0
Diabetes mellitus																	
Delaware	30.3	31.6	32.4	30.1	29.3	29.0	28.0	28.4	27.9	26.9	26.9	26.4	25.8	25.8	26.0	24.5	23.9
Kent	24.0	24.7	29.6	29.1	30.8	32.0	32.7	31.2	31.8	28.8	27.6	28.3	28.0	27.3	30.7	30.7	29.2
New Castle	32.5	33.2	33.3	29.8	27.8	27.1	26.7	27.5	26.6	26.6	27.3	26.1	25.0	26.0	25.9	24.2	24.1
Sussex	28.6	32.0	32.2	31.9	32.7	32.0	28.3	28.9	28.6	26.6	25.8	26.1	26.2	24.6	23.8	21.9	20.9
Influenza and pneumonia																	
Delaware	30.3	33.1	33.4	33.9	33.9	33.3	32.2	33.1	30.6	30.2	28.7	26.2	22.2	21.1	18.6	16.9	15.0
Kent	37.7	39.9	36.8	34.6	32.0	32.4	30.2	31.5	32.9	36.4	34.1	31.7	27.3	25.0	20.5	20.1	18.3
New Castle	25.4	27.9	29.6	31.0	31.3	31.7	30.6	30.7	28.2	27.5	25.1	23.1	19.1	17.6	15.7	14.3	12.8
Sussex	38.9	43.0	41.6	41.5	42.2	38.3	37.9	40.1	35.1	33.3	34.4	30.3	26.5	27.1	24.1	20.6	17.8
Alzheimer's Disease																	
Delaware	6.0	6.3	6.6	7.2	7.0	7.3	7.5	7.8	9.4	11.1	13.2	14.6	16.5	17.0	18.0	18.5	19.2
Kent	---	---	---	4.7	---	4.4	---	---	4.0	5.0	8.8	10.1	12.1	12.9	14.2	13.3	16.1
New Castle	7.3	7.3	7.6	8.3	7.9	8.3	8.9	9.7	11.7	13.8	16.0	17.3	18.8	18.0	18.0	18.2	18.3
Sussex	5.0	5.4	5.2	6.0	6.1	6.3	6.6	6.3	6.9	8.2	9.1	10.9	13.8	17.1	20.0	21.7	22.6
Nephritis, nephrotic syndrome, and nephrosis																	
Delaware	14.7	14.5	13.7	13.9	13.6	13.6	12.9	13.3	13.2	13.5	13.6	14.1	14.2	14.4	14.3	14.8	15.3
Kent	9.0	8.6	7.8	8.9	9.8	10.2	10.2	11.4	10.8	12.4	15.3	17.6	18.0	20.0	18.4	16.8	15.9
New Castle	16.3	16.2	15.8	15.5	15.1	14.7	14.2	14.5	14.5	14.2	13.8	13.5	13.3	13.7	13.9	14.9	16.1
Sussex	13.8	13.5	12.0	12.9	12.0	12.9	11.1	11.3	11.5	12.8	12.2	13.8	14.3	13.1	13.1	13.6	13.2
Septicemia																	
Delaware	12.3	12.2	11.8	12.8	13.5	14.2	14.6	15.0	14.4	15.2	15.6	16.0	16.0	15.9	15.0	14.3	13.3
Kent	12.6	11.4	11.9	11.3	10.7	10.7	11.6	12.0	11.9	13.8	14.4	15.7	17.0	18.4	17.7	18.6	18.2
New Castle	13.5	13.8	13.2	14.5	15.4	16.2	16.9	17.3	16.6	17.5	17.5	17.4	17.1	16.5	15.6	14.7	13.8
Sussex	9.4	8.7	8.3	9.3	10.3	11.2	10.8	11.6	10.9	10.8	12.0	12.8	13.0	13.3	12.9	11.5	10.3

TABLE F-31 (continued)

Cause of Death/ Area	1987 -1991	1988 -1992	1989 -1993	1990 -1994	1991 -1995	1992 -1996	1993 -1997	1994 -1998	1995 -1999	1996 -2000	1997 -2001	1998 -2002	1999 -2003	2000 -2004	2001 -2005	2002 -2006	2003 -2007
Intentional self-harm																	
Delaware	13.5	12.9	12.7	12.0	11.8	12.1	12.0	11.2	11.2	11.0	11.2	10.7	11.1	11.1	10.9	10.2	10.4
Kent	11.3	10.8	11.2	11.0	9.9	11.7	11.6	11.4	11.9	12.6	12.1	11.7	11.5	10.5	10.2	10.4	9.9
New Castle	13.7	13.1	12.8	12.0	11.7	11.8	11.3	10.2	10.1	9.8	10.3	9.9	10.7	11.0	11.2	10.0	10.4
Sussex	14.1	13.7	13.6	12.8	14.0	13.8	14.5	14.2	14.0	13.3	12.8	12.2	11.8	11.4	10.4	10.8	11.0
Chronic liver disease and cirrhosis																	
Delaware	11.6	11.2	11.3	10.6	9.8	9.9	9.5	9.1	9.2	9.3	9.0	9.3	9.8	9.8	9.4	9.1	8.5
Kent	10.0	9.3	9.8	11.1	11.1	10.2	10.3	10.0	9.8	10.5	10.8	11.4	12.1	11.5	10.7	10.1	9.8
New Castle	11.8	11.4	11.6	10.6	9.7	9.9	9.4	8.7	8.8	9.0	8.3	8.6	9.1	9.4	8.8	8.8	8.0
Sussex	12.3	11.8	11.3	9.8	9.2	9.6	9.0	9.4	9.5	9.0	9.7	10.1	10.5	10.1	10.5	9.3	9.2
Assault (Homicide)																	
Delaware	5.6	5.7	5.8	5.2	5.2	5.4	5.2	4.9	4.7	4.2	3.6	3.7	3.6	3.8	4.5	5.0	5.0
Kent	4.6	5.5	6.0	6.3	6.1	5.5	4.1	3.4	---	---	---	---	---	---	---	3.0	3.6
New Castle	5.4	5.6	5.5	4.8	4.9	5.2	5.3	5.3	5.3	5.1	4.5	4.6	4.3	4.6	5.3	5.9	6.0
Sussex	7.3	6.3	6.7	5.8	5.9	5.9	5.6	5.0	4.6	2.8	---	---	---	---	3.6	3.3	2.9
Certain conditions originating in the perinatal period																	
Delaware	9.2	8.6	8.0	6.9	6.1	5.4	5.3	5.3	5.8	6.7	7.8	8.3	8.5	8.2	8.2	7.5	7.1
Kent	8.2	7.4	6.3	6.1	5.2	5.3	5.5	5.6	5.9	6.8	7.2	7.9	8.2	8.2	8.0	6.6	5.2
New Castle	9.5	9.0	8.9	7.6	6.8	5.8	5.5	5.1	5.9	6.9	8.2	8.8	9.2	8.7	8.6	8.0	7.7
Sussex	9.0	8.5	6.2	4.7	4.1	3.6	4.2	5.8	5.5	5.8	7.2	6.9	6.1	6.4	6.9	6.4	6.8
Congenital malformations																	
Delaware	5.1	5.1	4.8	4.5	4.3	4.2	4.4	4.1	4.1	3.9	3.7	3.5	3.4	3.4	3.2	3.1	2.8
Kent	5.0	5.9	5.8	6.4	5.2	4.7	3.6	3.5	3.3	3.2	3.3	3.9	3.5	3.4	3.0	3.4	2.8
New Castle	5.0	4.7	4.2	3.6	3.7	3.7	4.0	3.8	3.9	3.9	3.6	3.2	3.1	3.2	3.0	2.9	2.7
Sussex	5.6	5.8	6.4	5.8	6.0	5.7	6.6	5.9	5.5	4.8	4.6	4.1	4.0	3.8	3.8	3.7	3.5
Human immunodeficiency virus (HIV)																	
Delaware	5.9	6.8	9.0	11.8	14.6	16.5	16.2	14.6	12.5	9.9	8.1	8.2	8.7	8.4	8.2	7.7	7.2
Kent	5.0	6.3	7.5	9.6	11.5	11.7	10.5	9.4	8.0	5.9	5.2	4.8	5.2	5.1	5.2	5.3	5.9
New Castle	6.2	7.0	9.9	13.0	16.2	18.8	19.0	17.2	14.9	12.1	9.8	9.9	10.8	10.7	10.4	9.6	8.8
Sussex	5.8	6.8	7.2	9.1	11.8	12.3	11.0	10.0	8.3	5.9	5.2	5.8	5.5	4.3	3.7	3.9	3.5
Accidents (unintentional injuries)																	
Delaware	37.5	36.2	34.8	35.4	35.7	35.4	36.1	36.4	35.8	36.0	36.9	36.4	36.0	35.8	35.1	35.2	34.8
Kent	41.0	42.6	41.5	38.1	39.6	38.0	35.2	35.0	37.8	37.5	38.9	37.7	37.6	38.4	39.0	40.8	39.7
New Castle	32.8	32.1	30.1	30.9	30.7	31.0	32.4	33.4	33.4	34.0	34.5	34.6	33.7	32.3	31.5	31.7	31.5
Sussex	52.8	46.5	46.6	51.1	51.3	49.6	50.8	48.6	42.2	42.1	44.0	42.2	43.1	46.5	44.2	42.6	42.5
Essential (primary) hypertension and hypertensive renal disease																	
Delaware	3.2	3.5	3.5	3.5	3.4	3.8	3.7	4.2	4.2	4.8	5.2	5.7	5.9	6.9	7.2	6.8	6.3
Kent	---	---	---	5.3	5.9	5.5	5.7	5.2	4.9	4.5	5.4	6.3	6.3	7.1	9.0	9.1	7.9
New Castle	2.9	2.9	3.1	2.9	2.6	3.0	2.8	3.5	3.6	4.4	4.9	5.4	5.9	7.1	7.4	6.9	6.8
Sussex	3.5	4.3	3.8	3.8	4.1	4.8	4.6	5.5	5.6	6.1	5.7	5.9	5.6	5.9	5.4	5.1	4.5
Aortic aneurysm and dissection																	
Delaware	9.1	9.3	8.9	8.4	8.4	7.1	7.0	6.7	6.5	6.4	6.6	6.3	6.7	6.3	5.8	5.0	4.5
Kent	9.0	9.1	9.9	9.2	9.1	7.8	7.7	8.0	8.6	9.0	9.3	9.9	10.0	9.3	8.3	7.2	5.5
New Castle	8.8	9.0	8.1	7.3	7.6	6.2	6.2	6.0	5.9	5.8	6.2	5.9	6.3	5.8	5.3	4.4	3.8
Sussex	10.2	10.4	10.5	10.7	10.3	9.3	8.7	7.7	6.6	6.5	6.0	5.4	5.9	6.1	5.8	5.3	5.5

TABLE F-31 (continued)

Cause of Death/ Area	1987 -1991	1988 -1992	1989 -1993	1990 -1994	1991 -1995	1992 -1996	1993 -1997	1994 -1998	1995 -1999	1996 -2000	1997 -2001	1998 -2002	1999 -2003	2000 -2004	2001 -2005	2002 -2006	2003 -2007
Pneumonitis due to solids and liquids																	
Delaware	4.2	4.2	4.4	4.1	4.2	4.5	5.2	5.7	7.0	7.8	8.9	9.1	9.7	8.9	8.2	7.1	6.3
Kent	---	---	---	---	---	---	---	---	4.5	4.8	4.1	5.0	5.9	5.3	5.4	5.0	3.9
New Castle	4.0	4.6	5.1	4.9	5.4	5.4	6.3	6.9	8.3	8.9	10.6	10.5	10.9	9.8	9.2	7.4	6.5
Sussex	4.8	3.6	---	---	---	3.1	3.7	4.2	5.3	7.1	7.8	8.5	9.4	9.1	7.9	7.5	7.2
Other diseases of respiratory system																	
Delaware	6.9	6.2	6.9	7.1	7.2	7.4	7.6	7.9	7.9	8.3	8.4	8.8	8.4	8.7	8.5	8.9	8.8
Kent	7.3	5.8	5.6	5.5	5.6	4.9	5.5	6.2	7.2	9.2	8.9	9.6	9.5	9.5	9.0	10.4	10.7
New Castle	6.6	6.3	7.2	7.0	7.0	7.2	7.5	7.4	7.5	7.8	8.1	8.3	8.1	8.7	8.7	8.6	8.2
Sussex	7.3	6.2	6.8	8.1	8.4	9.4	9.3	10.1	9.3	9.2	8.9	9.4	8.4	8.3	7.6	8.4	8.7
Parkinson's disease																	
Delaware	3.4	3.4	3.3	3.5	3.4	3.5	3.4	3.8	4.0	4.6	5.1	5.5	5.5	5.4	5.7	5.4	5.6
Kent	---	---	---	---	---	---	---	---	---	---	4.3	4.6	4.7	4.1	4.7	4.6	4.4
New Castle	4.0	3.9	3.8	4.2	4.2	4.1	4.0	4.3	4.4	5.0	5.5	6.0	5.9	5.9	6.1	6.0	6.3
Sussex	---	---	---	---	---	2.7	2.5	2.7	3.4	4.1	4.7	5.0	4.9	5.1	5.3	4.7	4.8
Dementia																	
Delaware	3.8	4.2	4.7	5.3	5.7	5.6	5.9	6.4	5.8	6.5	7.2	8.5	9.5	10.6	12.1	16.1	19.8
Kent	---	---	5.0	5.6	7.2	7.0	6.9	7.4	6.8	8.6	8.8	12.6	14.0	14.6	13.2	14.4	15.4
New Castle	3.5	3.9	4.0	4.6	4.7	4.8	5.0	5.8	5.5	6.3	7.3	8.3	9.2	10.6	13.1	18.6	24.5
Sussex	4.5	4.9	6.4	7.2	7.2	6.7	7.5	7.1	5.9	5.8	5.9	6.7	7.8	8.7	9.8	12.0	12.4

Notes:

1. Rates per 100,000, adjusted to U.S. 2000 population.
2. See Appendix E for ICD-9 and ICD-10 cause of death codes.
3. "----" indicates rate does not meet standards of reliability or precision; based on fewer than 20 deaths in the numerator.

Source:

Delaware Health Statistics Center

AADR_TRND(2)

TABLE F-32
 FIVE-YEAR AGE-ADJUSTED MORTALITY RATES FOR SELECTED LEADING CAUSES OF DEATH BY RACE AND SEX
 DELAWARE, 1987-2007

Cause of Death/ Race-Sex	1987 -1991	1988 -1992	1989 -1993	1990 -1994	1991 -1995	1992 -1996	1993 -1997	1994 -1998	1995 -1999	1996 -2000	1997 -2001	1998 -2002	1999 -2003	2000 -2004	2001 -2005	2002 -2006	2003 -2007
Diseases of the Heart																	
White	357.9	340.7	326.1	317.0	309.1	301.5	296.8	286.5	278.6	270.1	262.0	251.8	246.1	236.9	228.9	216.6	208.0
Male	442.8	422.6	408.5	399.2	389.0	382.2	378.2	363.3	348.7	341.3	328.7	312.4	303.8	294.5	282.7	268.3	260.8
Female	297.8	282.2	268.2	258.6	252.3	244.3	237.5	229.2	225.8	215.9	210.5	205.1	200.9	191.7	186.5	176.0	166.3
Black	397.8	385.2	364.1	350.5	340.8	339.0	330.7	329.4	321.5	310.5	303.6	293.0	293.4	292.4	286.7	271.8	261.7
Male	483.0	480.6	444.3	423.9	410.6	415.5	402.3	404.5	393.2	377.4	361.5	351.5	351.0	354.9	339.2	329.0	316.0
Female	335.8	319.4	305.5	297.6	287.2	284.1	279.8	276.7	271.0	263.6	261.6	251.5	252.9	247.6	248.2	229.9	219.2
Malignant Neoplasms																	
White	229.5	230.6	230.0	232.0	229.7	228.4	225.6	222.9	219.7	214.1	212.7	206.5	201.2	198.5	197.2	190.8	190.6
Male	302.9	299.0	298.3	298.9	293.5	294.1	289.0	282.3	275.3	264.8	259.5	253.1	247.3	245.4	243.8	236.4	232.0
Female	186.8	190.7	190.0	190.6	190.0	188.2	186.5	186.1	185.8	182.5	182.8	176.0	170.7	167.1	165.8	159.9	162.3
Black	341.5	335.5	343.3	332.7	328.2	328.1	326.6	306.3	302.7	283.7	265.1	250.1	250.3	236.5	234.5	227.8	218.5
Male	477.8	485.0	506.6	480.2	473.3	468.0	449.2	408.4	406.7	369.8	340.0	329.6	328.3	303.2	304.1	293.2	276.0
Female	255.4	243.9	244.4	244.6	240.7	245.8	253.0	246.9	243.1	234.2	221.6	205.5	203.8	194.7	190.7	185.3	180.5
Cerebrovascular Diseases																	
White	55.1	55.5	55.2	54.1	52.5	50.1	49.2	48.7	48.0	49.2	49.3	49.2	48.7	46.3	43.3	41.8	38.8
Male	57.1	56.6	56.2	55.9	54.6	52.5	52.0	51.6	50.0	50.5	52.0	50.8	50.3	48.7	47.0	42.5	38.7
Female	53.6	54.4	54.3	52.2	50.3	47.8	46.8	46.0	45.8	47.3	46.7	47.4	47.1	44.5	41.0	41.0	38.3
Black	84.8	82.3	83.8	83.3	84.3	81.1	77.5	75.2	71.0	70.4	68.0	69.1	65.8	65.8	63.1	59.7	58.6
Male	87.8	94.2	92.2	93.9	90.6	92.6	84.7	87.5	80.5	77.8	66.2	66.5	62.7	58.7	60.3	62.3	64.7
Female	80.7	73.2	76.5	75.7	79.4	72.7	71.5	65.6	62.7	64.1	66.7	67.7	65.3	67.3	63.0	57.2	54.3
Chronic Lower Respiratory Diseases																	
White	37.7	38.2	40.0	41.1	41.1	41.6	41.9	42.1	42.5	43.5	42.7	43.1	42.2	41.2	42.2	41.9	41.1
Male	55.3	52.8	51.4	52.5	52.8	53.6	53.5	55.6	55.5	54.5	52.3	51.1	47.7	45.9	46.6	45.3	44.8
Female	28.9	30.7	34.4	35.5	35.4	35.8	36.8	36.0	36.5	38.2	38.0	38.9	39.3	38.5	39.5	39.7	38.6
Black	29.9	31.3	32.2	29.9	30.3	30.8	31.6	33.0	34.4	35.4	35.4	34.7	33.4	33.7	31.5	31.7	31.5
Male	53.0	53.8	55.9	54.9	54.1	53.6	50.2	44.3	48.7	50.9	50.4	52.4	51.0	49.2	45.1	46.4	45.2
Female	14.6	16.2	17.1	14.1	15.4	17.0	20.2	25.3	26.0	25.7	25.7	23.6	22.0	23.4	23.1	23.1	23.6
Diabetes mellitus																	
White	26.2	27.0	27.4	25.8	24.7	24.6	24.1	24.5	23.8	23.2	23.5	22.7	22.4	22.1	22.7	21.4	20.7
Male	25.9	26.3	26.6	26.2	25.9	26.5	25.6	26.2	26.6	26.0	25.7	26.0	25.8	25.7	26.3	25.5	25.3
Female	26.1	27.1	27.5	25.1	23.4	23.0	23.0	23.2	21.9	21.3	21.8	20.3	19.6	19.5	20.1	18.5	17.4
Black	61.7	67.4	71.1	63.5	64.5	62.4	56.4	57.5	58.6	54.9	52.5	53.3	49.9	50.6	49.6	46.1	45.5
Male	50.9	56.9	57.8	52.5	55.1	58.4	55.0	62.3	62.4	58.8	59.0	61.3	53.7	54.9	53.1	49.5	48.2
Female	68.0	73.7	78.7	69.8	69.6	64.5	57.1	55.7	57.0	53.7	49.5	49.5	47.6	48.1	47.5	44.6	43.7
Influenza and pneumonia																	
White	29.8	32.5	32.5	33.2	32.9	32.1	31.3	32.6	30.5	30.3	29.2	26.7	22.6	21.3	18.8	16.9	15.0
Male	41.6	46.9	46.1	46.4	44.6	42.3	38.9	41.7	38.6	38.2	36.3	33.2	27.0	26.1	22.6	20.8	18.4
Female	23.7	25.5	26.2	27.0	27.1	26.8	27.0	27.6	25.8	25.9	25.1	22.8	19.7	18.5	16.3	14.4	12.9
Black	33.2	37.3	39.1	36.9	38.2	40.4	37.8	35.0	31.7	29.9	25.3	22.8	19.8	19.9	17.8	16.9	15.2
Male	48.9	55.2	56.4	53.9	56.9	62.6	62.8	56.0	46.6	44.9	38.7	32.3	28.2	31.1	27.7	25.3	23.5
Female	24.3	28.1	30.4	28.6	29.6	29.5	25.6	24.0	23.1	21.5	17.3	16.6	14.5	13.8	12.1	12.5	11.1

TABLE F-32 (continued)

Cause of Death/ Race-Sex	1987 -1991	1988 -1992	1989 -1993	1990 -1994	1991 -1995	1992 -1996	1993 -1997	1994 -1998	1995 -1999	1996 -2000	1997 -2001	1998 -2002	1999 -2003	2000 -2004	2001 -2005	2002 -2006	2003 -2007
Alzheimer's Disease																	
White	6.2	6.5	6.9	7.6	7.4	7.6	8.0	8.2	9.8	11.5	13.8	15.3	17.1	17.4	18.5	18.9	19.6
Male	7.7	8.3	8.0	8.5	8.1	7.7	6.9	6.9	8.9	10.0	12.4	14.3	15.1	14.9	15.6	16.2	17.0
Female	5.6	5.9	6.5	7.2	7.1	7.5	8.4	8.8	10.3	12.1	14.6	15.8	18.1	18.9	20.1	20.3	21.0
Black	---	---	---	---	---	---	---	---	5.8	8.2	8.7	9.6	12.6	13.8	14.0	14.2	15.3
Male	---	---	---	---	---	---	---	---	---	---	---	---	---	13.9	---	---	12.9
Female	---	---	---	---	---	---	---	---	---	8.1	8.2	8.7	12.0	13.5	15.3	15.2	16.0
Nephritis, nephrotic syndrome, and nephrosis																	
White	12.3	12.0	11.5	11.6	11.7	12.1	11.4	11.5	11.3	11.2	11.1	11.9	12.2	12.6	12.5	13.0	13.1
Male	17.7	16.1	14.9	15.7	15.5	15.9	15.1	15.7	15.2	14.9	15.3	16.7	16.4	17.4	17.5	17.6	17.5
Female	9.6	10.0	10.1	9.7	9.8	10.5	9.5	9.3	9.3	9.2	8.7	9.1	9.7	9.7	9.5	9.8	10.1
Black	32.6	33.4	29.8	30.6	27.4	24.9	24.7	28.1	28.4	30.9	31.5	30.2	27.7	26.7	26.8	27.8	30.3
Male	31.0	35.2	32.6	35.2	31.7	29.7	27.5	30.8	32.7	38.6	35.5	38.5	36.8	35.8	34.4	38.5	40.5
Female	32.5	30.8	27.4	27.1	24.0	21.4	22.6	26.1	25.9	25.9	28.7	25.3	22.0	21.5	23.0	21.7	24.5
Septicemia																	
White	11.5	11.5	11.3	12.0	12.5	13.1	13.3	13.7	13.0	13.8	14.0	14.5	14.4	14.7	13.8	13.0	12.1
Male	15.1	14.7	13.2	13.0	13.7	13.5	13.8	15.6	15.3	15.9	16.0	16.7	15.8	16.4	15.5	14.9	14.3
Female	9.5	9.5	10.2	11.3	11.7	12.8	12.9	12.5	11.5	12.7	12.9	13.4	13.5	13.6	12.8	11.9	10.6
Black	18.3	16.8	15.5	18.6	21.1	21.9	23.7	25.2	25.7	25.8	28.5	27.7	28.4	25.1	24.0	22.7	21.4
Male	16.5	14.4	15.2	24.5	26.3	29.1	31.7	33.3	30.1	32.5	33.8	31.4	33.2	27.5	24.5	22.7	21.0
Female	17.9	16.8	14.5	15.9	19.1	19.0	20.5	22.0	23.7	22.0	25.4	26.0	25.7	23.4	24.0	22.7	21.4
Intentional self-harm																	
White	14.9	14.3	14.2	13.4	13.2	13.5	13.4	12.6	12.7	12.8	12.9	12.3	12.9	12.8	12.5	11.9	12.3
Male	24.4	22.8	23.4	21.5	21.0	22.3	22.7	21.4	21.9	21.9	21.8	21.1	21.6	21.0	20.8	19.7	19.5
Female	7.0	6.8	6.4	6.3	6.4	5.9	5.1	4.5	4.3	4.4	4.7	4.4	5.1	5.5	5.0	4.7	5.6
Black	6.4	6.2	5.2	5.1	5.5	5.8	5.8	5.4	4.9	4.0	4.8	5.0	4.8	5.5	5.9	5.2	4.5
Male	12.2	12.0	9.6	10.1	11.6	12.4	11.7	11.2	9.7	7.7	8.9	9.8	9.1	9.9	10.6	9.7	8.1
Female	---	---	---	---	---	---	---	---	---	---	---	---	---	---	---	---	---
Chronic liver disease and cirrhosis																	
White	11.1	10.9	10.8	10.0	9.1	9.4	9.1	8.9	9.1	9.5	9.0	9.5	10.0	9.9	9.7	9.6	9.0
Male	16.6	16.5	16.4	14.9	14.2	13.7	12.5	12.2	13.0	12.6	11.8	11.6	12.1	11.5	11.8	12.3	11.7
Female	6.2	5.8	5.9	5.7	4.8	5.7	6.0	5.9	5.7	6.7	6.5	7.6	8.1	8.5	8.0	7.1	6.5
Black	15.3	13.3	14.7	14.2	14.7	13.5	12.6	10.7	10.0	8.5	9.0	8.9	9.3	9.1	8.0	7.2	6.4
Male	25.9	23.1	26.0	25.1	25.9	22.2	19.2	15.8	13.1	12.0	12.1	12.7	13.7	14.2	11.9	12.0	10.7
Female	---	---	---	---	---	---	---	---	7.1	---	6.3	---	5.7	---	---	---	---
Assault (Homicide)																	
White	3.8	3.7	3.9	3.3	3.7	3.6	3.5	3.2	3.1	2.4	2.2	2.2	2.0	2.1	2.6	2.4	2.4
Male	4.9	4.4	5.0	4.2	4.6	4.1	4.2	3.9	3.7	2.9	2.7	2.6	2.5	2.5	3.5	3.4	3.3
Female	2.8	3.0	2.9	2.4	3.0	3.2	2.8	2.6	2.4	1.9	1.7	1.8	1.6	1.7	1.7	1.5	1.5
Black	14.0	15.0	14.4	13.7	11.7	12.8	12.3	12.4	11.7	11.6	8.9	8.9	8.8	9.6	11.1	13.4	14.0
Male	20.5	21.7	21.5	20.3	18.2	20.1	19.8	18.9	18.8	18.1	14.3	14.8	15.7	16.6	19.9	24.2	25.6
Female	8.1	9.0	8.0	7.7	6.0	6.4	5.8	6.5	5.4	5.7	---	---	---	---	---	---	---

TABLE F-32 (continued)

Cause of Death/ Race-Sex	1987 -1991	1988 -1992	1989 -1993	1990 -1994	1991 -1995	1992 -1996	1993 -1997	1994 -1998	1995 -1999	1996 -2000	1997 -2001	1998 -2002	1999 -2003	2000 -2004	2001 -2005	2002 -2006	2003 -2007
Certain conditions originating in the perinatal period																	
White	6.5	5.9	5.2	4.5	4.0	3.3	3.2	3.2	3.3	4.2	5.1	5.8	6.2	6.1	5.6	5.0	4.7
Male	6.8	6.2	5.6	4.7	4.2	3.6	3.3	3.1	3.4	4.7	5.7	6.2	6.8	6.5	5.8	5.2	5.2
Female	6.2	5.5	4.8	4.3	3.8	2.9	3.0	3.2	3.1	3.7	4.5	5.4	5.5	5.7	5.4	4.7	4.1
Black	19.3	18.7	18.0	15.1	12.9	12.0	11.7	11.9	13.9	14.6	16.6	16.4	16.0	15.0	16.3	14.8	14.4
Male	19.1	18.5	19.8	17.9	15.6	14.9	15.7	14.0	16.4	16.7	18.7	18.9	18.7	16.9	19.0	16.6	15.5
Female	19.6	18.9	16.0	12.2	10.1	9.0	7.5	9.7	11.4	12.4	14.4	13.9	13.3	13.1	13.7	13.1	13.3
Congenital malformations																	
White	4.6	4.8	4.7	4.3	4.4	4.5	4.6	4.2	4.2	4.0	3.7	3.3	3.2	3.3	3.0	3.0	2.8
Male	4.8	5.0	4.9	4.8	4.9	4.9	4.7	4.2	4.3	4.2	3.7	3.5	3.9	3.6	3.3	3.2	2.9
Female	4.5	4.6	4.7	3.8	3.9	4.2	4.6	4.3	4.2	3.9	3.7	3.1	2.7	2.9	2.7	2.7	2.6
Black	6.8	6.4	5.1	5.1	3.9	3.1	3.2	3.4	3.4	3.5	3.9	4.0	3.6	3.7	3.5	3.3	2.9
Male	4.8	5.0	4.9	4.8	4.9	4.9	4.7	4.2	4.3	4.2	3.7	3.5	3.9	3.6	3.3	3.2	2.9
Female	4.5	4.6	4.7	3.8	3.9	4.2	4.6	4.3	4.2	3.9	3.7	3.1	2.7	2.9	2.7	2.7	2.6
Human immunodeficiency virus (HIV)																	
White	3.9	4.5	5.6	6.6	7.7	8.1	7.2	5.9	4.7	3.0	2.0	2.2	2.6	2.5	2.3	2.3	2.1
Male	7.4	8.5	10.4	12.1	13.7	14.2	12.8	10.6	8.4	5.4	3.6	3.7	4.4	3.8	3.6	3.5	3.4
Female	---	---	---	---	1.8	2.0	1.7	---	---	---	---	---	---	---	---	---	---
Black	16.7	19.2	26.7	37.7	48.8	57.7	59.3	55.5	48.8	41.8	36.0	35.1	35.8	34.8	33.6	30.9	28.9
Male	29.3	35.1	46.4	65.1	83.0	97.0	97.3	93.3	80.3	66.6	56.1	55.0	53.9	51.6	50.4	45.4	39.5
Female	---	---	10.1	14.7	20.0	24.4	27.1	23.6	22.0	20.8	19.0	18.2	20.7	20.8	19.8	19.1	20.4
Accidents (unintentional injuries)																	
White	36.8	35.8	34.0	34.6	34.1	33.9	34.8	36.2	36.1	37.3	38.2	37.5	37.1	37.3	37.2	37.7	37.9
Male	52.8	50.5	48.0	51.7	51.3	49.8	50.2	51.1	48.4	50.1	50.8	50.5	51.2	51.3	51.5	52.7	54.0
Female	23.5	23.3	21.8	20.1	18.8	19.6	20.8	22.3	24.2	25.4	26.5	25.6	24.2	24.6	24.0	23.8	23.0
Black	43.9	41.6	41.7	43.8	46.3	44.9	44.5	39.9	36.5	34.0	35.9	37.0	36.6	34.6	31.5	29.1	26.0
Male	69.0	68.6	67.0	70.8	74.8	71.5	68.2	60.9	56.7	52.8	52.4	55.8	55.1	49.4	46.1	43.5	37.6
Female	25.0	21.7	23.4	24.3	26.8	26.2	27.8	24.0	21.4	18.5	21.8	20.9	21.3	21.5	19.3	17.4	16.3
Essential (primary) hypertension and hypertensive renal disease																	
White	2.7	2.7	2.7	2.7	2.5	2.8	2.9	3.5	3.5	4.2	4.5	5.0	5.1	5.7	6.0	5.7	5.2
Male	3.0	2.7	2.5	2.3	2.4	2.5	2.9	3.7	3.8	4.3	4.4	4.7	5.0	5.3	5.6	5.5	4.8
Female	2.5	2.6	2.7	2.9	2.7	3.0	2.9	3.4	3.3	4.0	4.3	5.0	5.0	5.8	6.1	5.7	5.3
Black	7.7	9.5	10.1	10.0	10.1	10.7	9.7	9.9	9.8	9.9	10.4	11.2	12.0	15.1	16.1	14.8	13.9
Male	---	---	---	---	---	---	---	---	12.7	12.9	13.0	11.7	13.9	19.4	19.8	18.9	19.5
Female	---	---	10.7	10.7	11.2	11.2	9.7	9.4	8.4	8.1	9.1	10.7	10.8	12.8	14.0	12.2	10.1
Aortic aneurysm and dissection																	
White	9.4	9.6	9.0	8.6	8.4	7.0	7.0	6.7	6.5	6.5	6.8	6.4	6.8	6.2	5.8	5.0	4.4
Male	15.5	15.7	15.2	14.1	13.6	11.3	11.3	10.8	10.6	10.4	11.3	10.0	9.6	8.8	8.2	6.8	6.2
Female	5.4	5.6	5.0	5.0	5.0	4.3	4.3	4.1	3.9	4.0	3.9	4.2	4.8	4.4	4.0	3.6	2.9
Black	8.1	7.7	8.3	6.7	8.4	7.5	6.6	6.1	5.6	5.0	5.0	5.5	5.9	6.7	6.3	5.2	5.0
Male	---	---	---	---	---	---	---	---	---	---	---	---	---	---	---	---	---
Female	---	---	---	---	---	---	---	---	---	---	---	---	---	6.8	6.4	---	---

TABLE F-32 (continued)

Cause of Death/ Race-Sex	1987 -1991	1988 -1992	1989 -1993	1990 -1994	1991 -1995	1992 -1996	1993 -1997	1994 -1998	1995 -1999	1996 -2000	1997 -2001	1998 -2002	1999 -2003	2000 -2004	2001 -2005	2002 -2006	2003 -2007
Pneumonitis due to solids and liquids																	
White	4.3	4.1	4.3	4.0	4.1	4.3	5.0	5.4	6.8	7.5	8.5	8.9	9.4	8.5	7.8	6.8	6.1
Male	5.8	5.3	5.2	5.3	5.8	5.8	7.3	8.8	10.1	10.5	11.8	11.5	11.6	10.5	9.5	7.9	7.4
Female	3.4	3.3	3.8	3.3	3.3	3.6	4.0	3.8	5.1	5.8	6.7	7.3	8.0	7.4	6.8	5.9	5.2
Black	---	---	---	---	---	6.0	6.4	7.4	8.8	10.4	11.2	10.3	11.5	10.4	10.4	8.8	7.9
Male	---	---	---	---	---	---	---	---	---	15.4	19.7	17.7	19.6	18.1	17.5	14.7	12.5
Female	---	---	---	---	---	---	---	---	---	---	---	---	6.7	---	6.5	---	---
Other diseases of respiratory system																	
White	6.6	5.9	6.4	6.7	7.1	7.3	7.6	8.1	8.2	8.5	8.6	8.8	8.5	8.8	8.6	9.1	8.9
Male	8.3	7.9	8.5	10.2	9.6	10.3	10.4	10.7	10.0	10.6	10.2	9.8	9.7	10.0	10.0	11.2	11.0
Female	5.5	4.6	5.1	4.6	5.4	5.5	5.7	6.2	6.6	7.0	7.3	8.1	7.8	8.1	7.7	7.7	7.4
Black	8.8	8.7	9.4	8.7	7.6	7.4	7.6	6.7	6.1	6.9	7.1	7.8	7.2	7.3	7.0	6.8	7.2
Male	---	---	---	12.8	11.6	---	---	---	---	---	---	---	---	8.9	10.3	9.4	9.5
Female	---	---	---	---	---	---	---	---	---	7.9	8.1	7.6	6.4	6.3	---	5.3	5.8
Parkinson's disease																	
White	3.7	3.6	3.5	3.7	3.6	3.7	3.6	3.9	4.3	4.9	5.5	6.0	5.9	5.9	6.0	5.8	6.0
Male	6.4	6.1	6.1	7.1	6.5	6.3	5.9	6.1	6.0	6.8	8.0	8.5	8.7	8.9	9.1	8.8	9.0
Female	2.4	2.4	2.0	1.9	2.0	2.2	2.3	2.8	3.4	3.9	4.2	4.6	4.3	4.2	4.4	4.1	4.2
Black	---	---	---	---	---	---	---	---	---	---	---	---	---	---	---	---	---
Male	---	---	---	---	---	---	---	---	---	---	---	---	---	---	---	---	---
Female	---	---	---	---	---	---	---	---	---	---	---	---	---	---	---	---	---
Dementia																	
White	4.0	4.4	5.1	5.6	6.0	5.8	6.2	6.6	6.1	6.6	7.4	8.6	9.5	10.2	11.8	15.5	18.7
Male	3.8	4.7	5.7	6.5	7.5	7.1	7.3	7.5	7.0	7.9	7.8	7.9	8.3	8.7	9.4	12.8	15.6
Female	4.0	4.3	4.8	5.1	5.2	5.2	5.6	6.0	5.6	6.1	7.2	8.9	10.1	10.9	13.0	16.8	20.4
Black	---	---	---	---	---	---	---	---	---	6.0	5.7	8.6	10.2	15.1	16.0	22.5	29.2
Male	---	---	---	---	---	---	---	---	---	---	---	18.8	17.9	22.0	21.7	28.5	28.0
Female	---	---	---	---	---	---	---	---	---	---	---	---	---	12.3	13.3	19.6	29.5

AADR_TRND(3)

Notes:

1. Rates per 100,000, adjusted to U.S. 2000 population.
2. See Appendix E for ICD-9 and ICD-10 cause of death codes.
3. "---" indicates rate does not meet standards of reliability or precision; based on fewer than 20 deaths in the numerator.

Source:

Delaware Health Statistics Center