

DELAWARE VITAL STATISTICS ANNUAL REPORT, 2008



Photo courtesy of the Delaware Tourism Office

MORTALITY

Suggested citation:

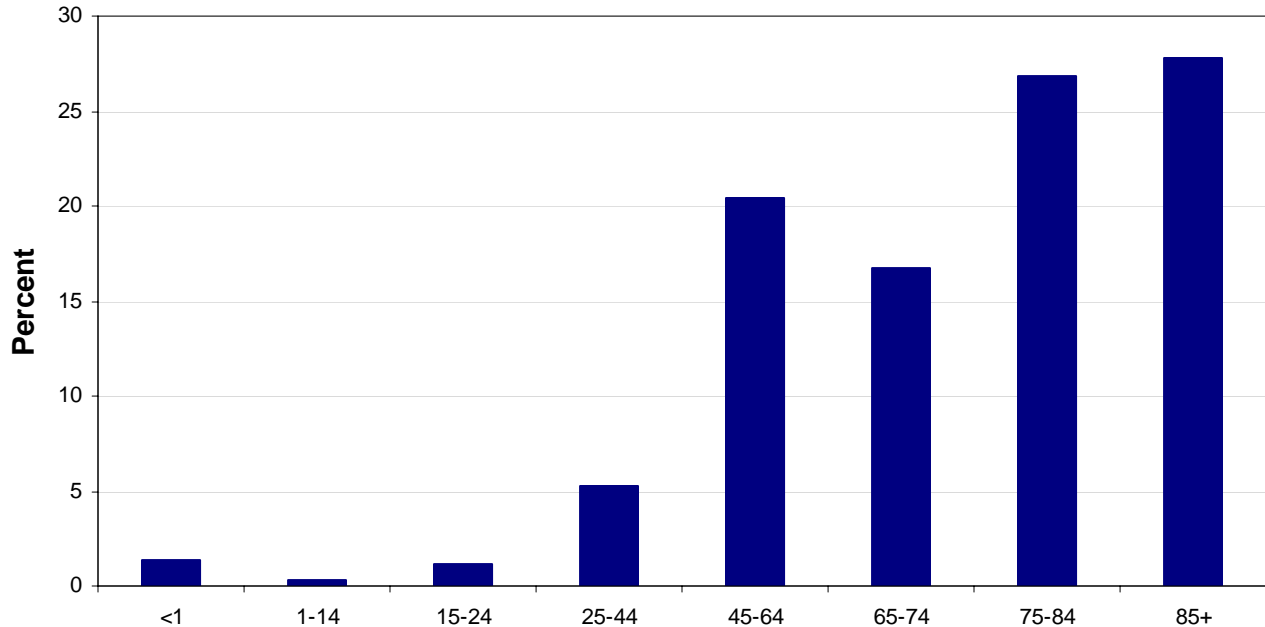
Delaware Health Statistics Center. *Delaware Vital Statistics Annual Report, 2008*.
Delaware Department of Health and Social Services, Division of Public Health: 2010.

MORTALITY

More Delaware residents died in 2008 than in 2007. A total of 7,602 residents died, 101 of which were children under the age of 1. Deaths were split almost equally between males and females. Cancer and heart disease were the most common causes of death, accounting for 48 percent of all deaths in 2008.

- Just over 28 percent of the Delawareans who died in 2008 were 85 or older. Deaths to those 75 and older accounted for more than half of all deaths.

**Percent of Deaths by Age
Delaware, 2008**



Source: Delaware Health Statistics Center

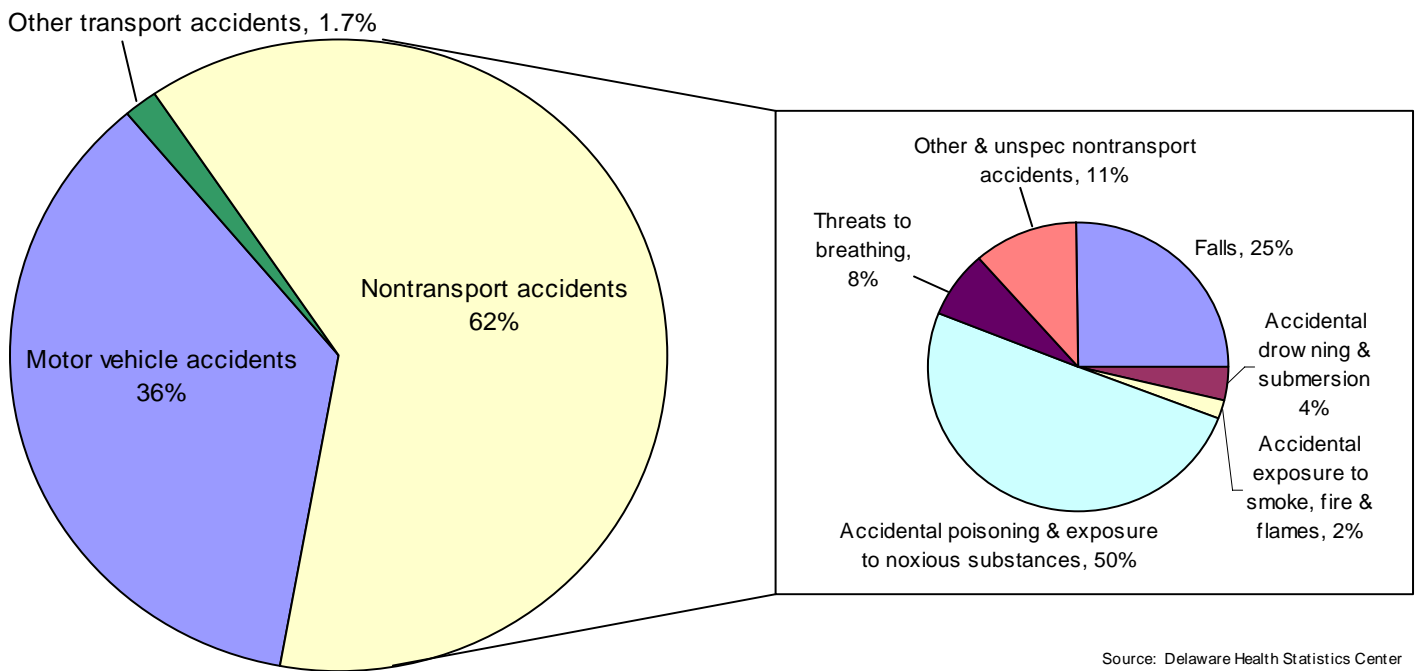
- A Delaware resident born in 2008 could expect to live an average of 78.3 years.
- Life expectancy at birth varied by race and sex; white females had the highest life expectancy (81.4) while black males had the lowest (72.7).
- In 1989, 80 percent of Delaware decedents were buried and 15 percent were cremated, by 2008 the distribution had shifted: 59 percent of decedents were buried and 37 percent were cremated.
- In 2008, the ten leading causes of death for residents of all ages were almost identical to the top 10 in 2007, with the main difference being movement among the rankings.

Rank	Leading Cause of Death	Number
1	Malignant neoplasms	1903
2	Diseases of heart	1769
3	Chronic lower respiratory diseases	470
4	Dementia	374
5	Cerebrovascular diseases	363
6	Accidents (unintentional injuries)	351
7	Diabetes mellitus	217
8	Alzheimer's disease	203
9	Nephritis, nephrotic syndrome & nephrosis	187
10	Septicemia	138

MORTALITY

- There were 351 deaths due to accidents in 2008, 36 percent of which were due to motor vehicle accidents and 62 percent of which were due to non-transport accidents. Fifty percent of the 218 non-transport accidents were caused by unintentional poisonings; the majority (88 percent) of unintentional poisonings were drug poisonings.
- Overall, unintentional poisonings were second only to motor vehicle injuries as the leading cause of unintentional injury deaths in 2008.
 - For white females, poisonings caused the most unintentional injuries, followed by motor vehicle accidents. For white males, and blacks of both sexes, motor vehicle accidents caused the most unintentional injuries.

Accidental Causes of Death by Specific Cause of Injury Delaware, 2008

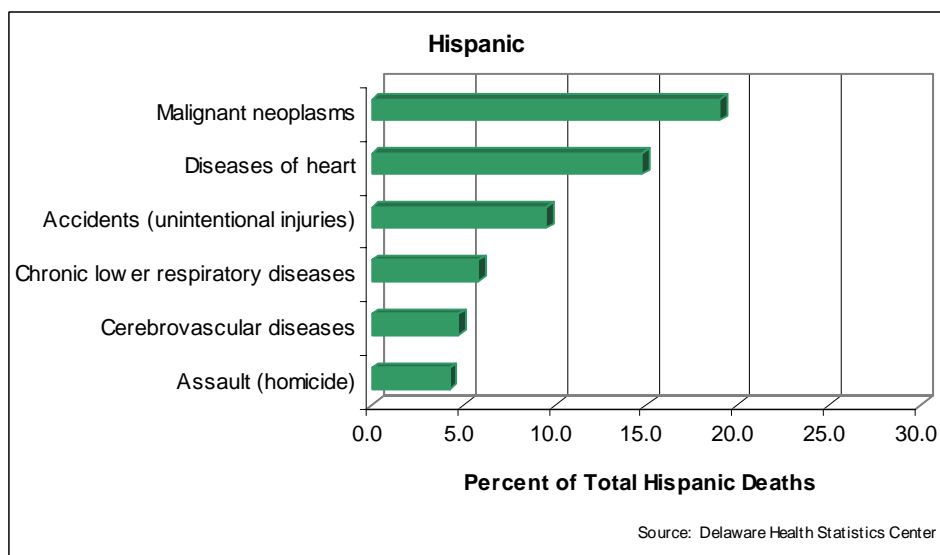
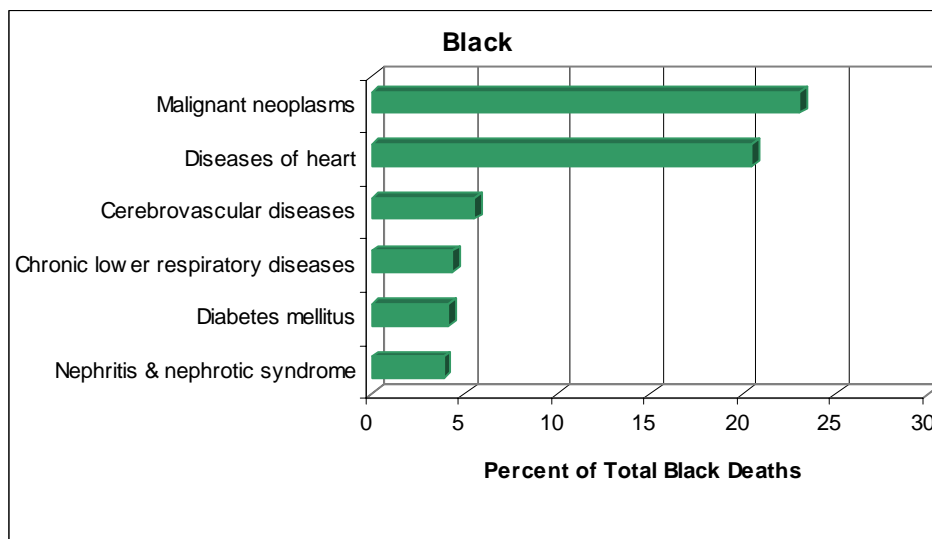
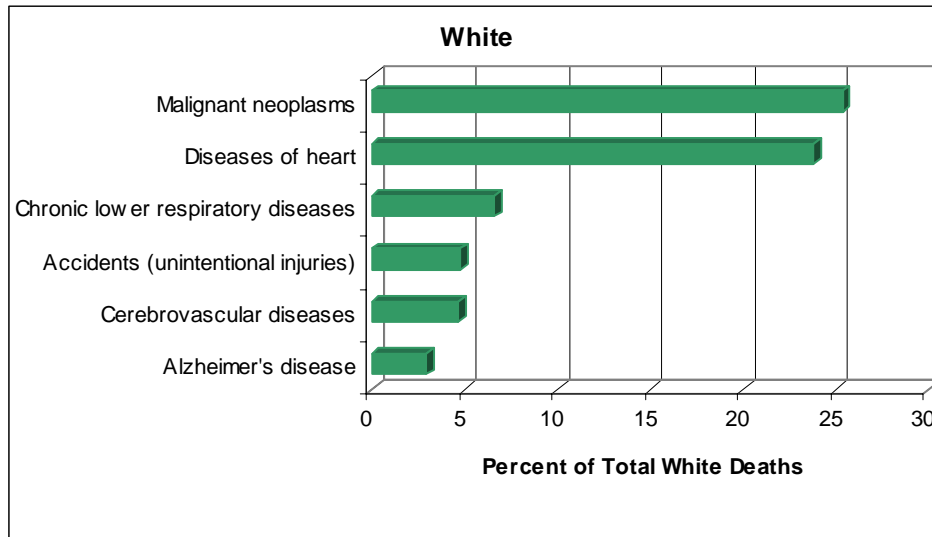


- From 2004-2008, accidents were the number one cause of death for people 1-44 years of age, and were responsible for nearly half of all deaths for people 15-24 years of age. For those ages 15-24, accidents, homicides, and suicides were the three most frequent causes of death (See Table F-11).

MORTALITY

The leading causes of death varied by race and ethnic group. The top six leading causes of death for white, black, and Hispanic Delawareans are shown below.

Leading Causes of Death by Race, Delaware, 2008

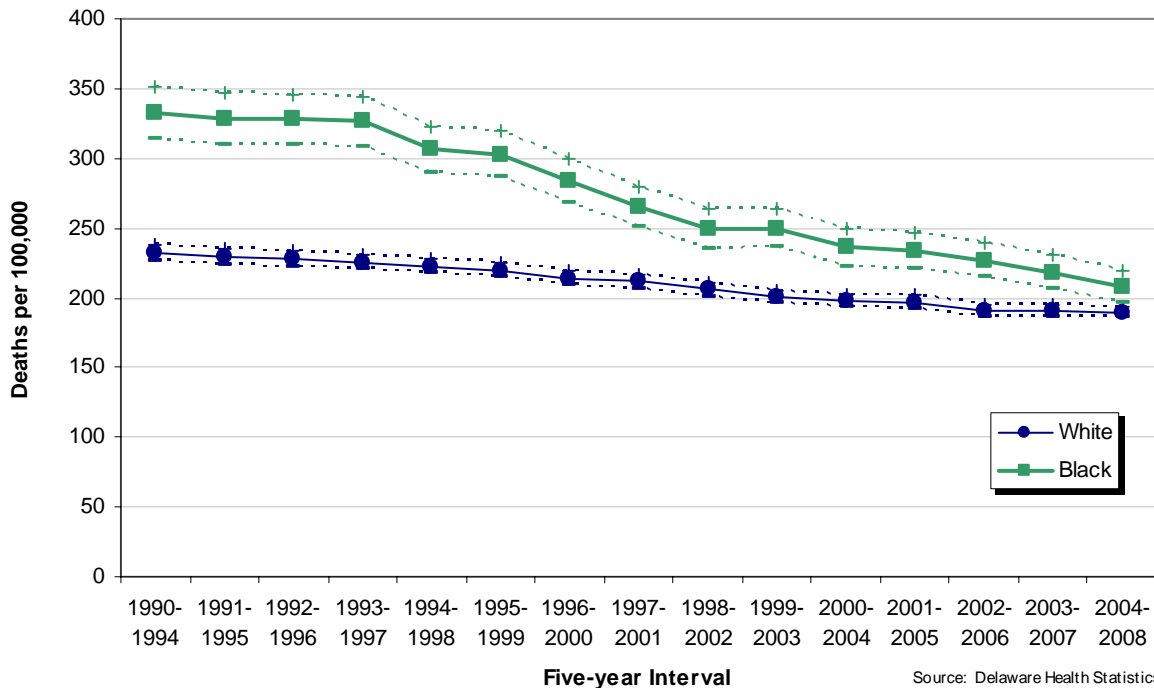


MORTALITY

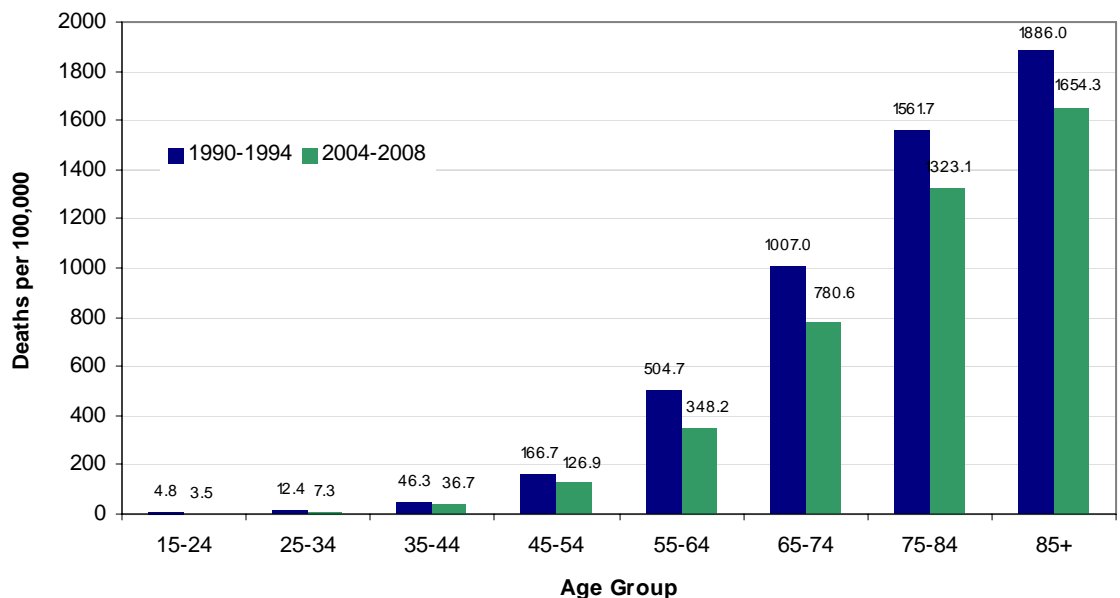
Cancer mortality rates have been decreasing in all three counties since the early 1990s, though most recently Kent County rates have leveled off. In 2004-2008, the 5-year age-adjusted cancer mortality rates ranged from 185 in Sussex County to 212.5 deaths per 100,000 population in Kent County. Age-adjusted cancer mortality rates in Kent County were significantly higher than the Delaware rate of 192.

Cancer mortality rates for black and white decedents have been decreasing since the early nineties, and while the gap between black and white has been narrowing, black cancer mortality rates in 2004-2008 remained significantly higher than the white rates.

**Five-year Age-Adjusted Cancer Mortality Rates by Race
Delaware, 1990-2008**



**Five-year Average Age-Specific Cancer Mortality Rates
Delaware, 1990-1994 and 2004-2008**



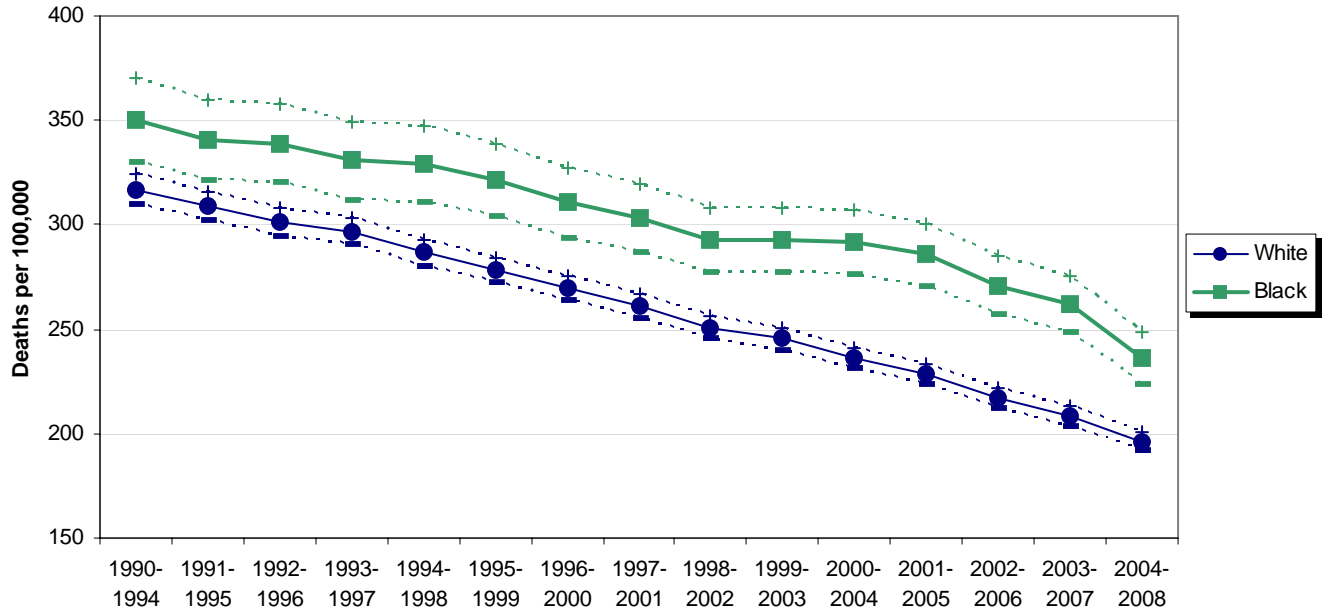
The same decreases seen in the age-adjusted mortality rates of both blacks and whites were reflected in the age-specific rates as well.

Cancer mortality rates for all age groups 15 and higher declined between 1990-1994 and 2004-2008. The 25-34 age group experienced the largest decrease.

MORTALITY

Heart disease remained the most common cause of death for both black and white Delawareans in 2004-2008. Both black and white heart disease mortality rates have declined significantly since 1990-1994; overall, black rates declined 33 percent while white rates declined 38 percent.

**Five-year Age-Adjusted Heart Disease Mortality Rates by Race
Delaware, 1990-2008**

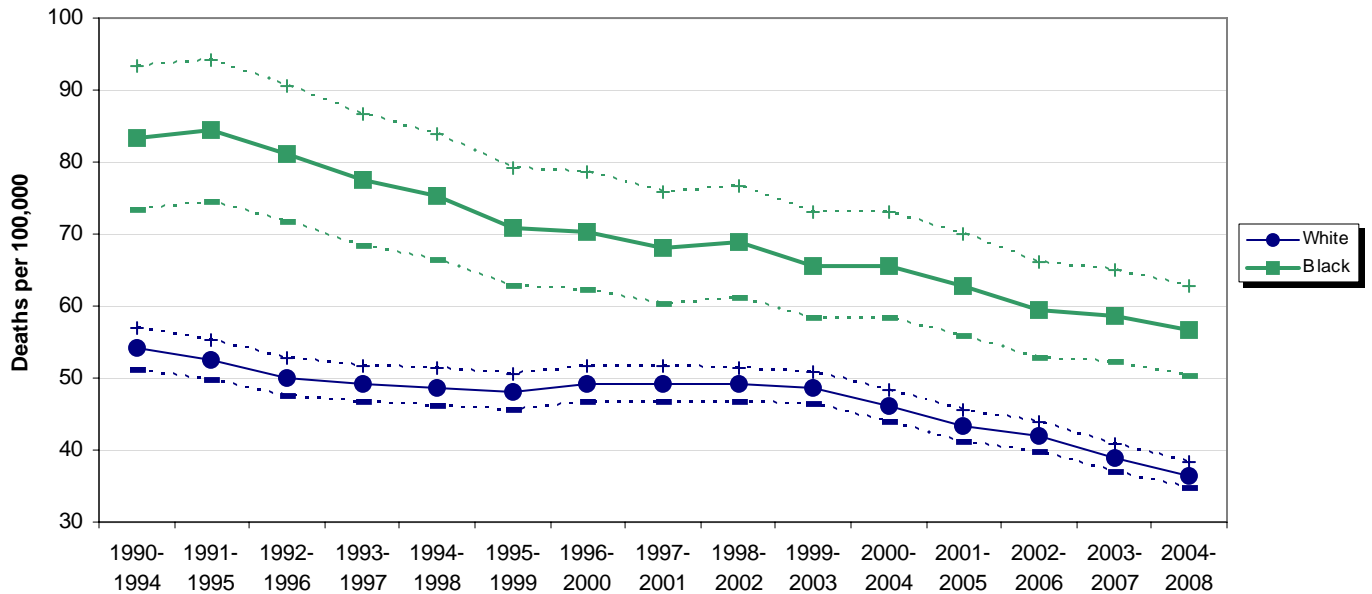


Five-year Interval

Source: Delaware Health Statistics Center

Stroke mortality rates for both races continued their downward trends, with white rates declining 33 percent and black rates declining 32 percent between 1990-1994 and 2004-2008. Due to the similar decreases in their rates, black rates in 2004-2008 remained approximately 55 percent higher than white rates.

**Five-year Age-Adjusted Stroke Mortality Rates by Race
Delaware, 1990-2008**



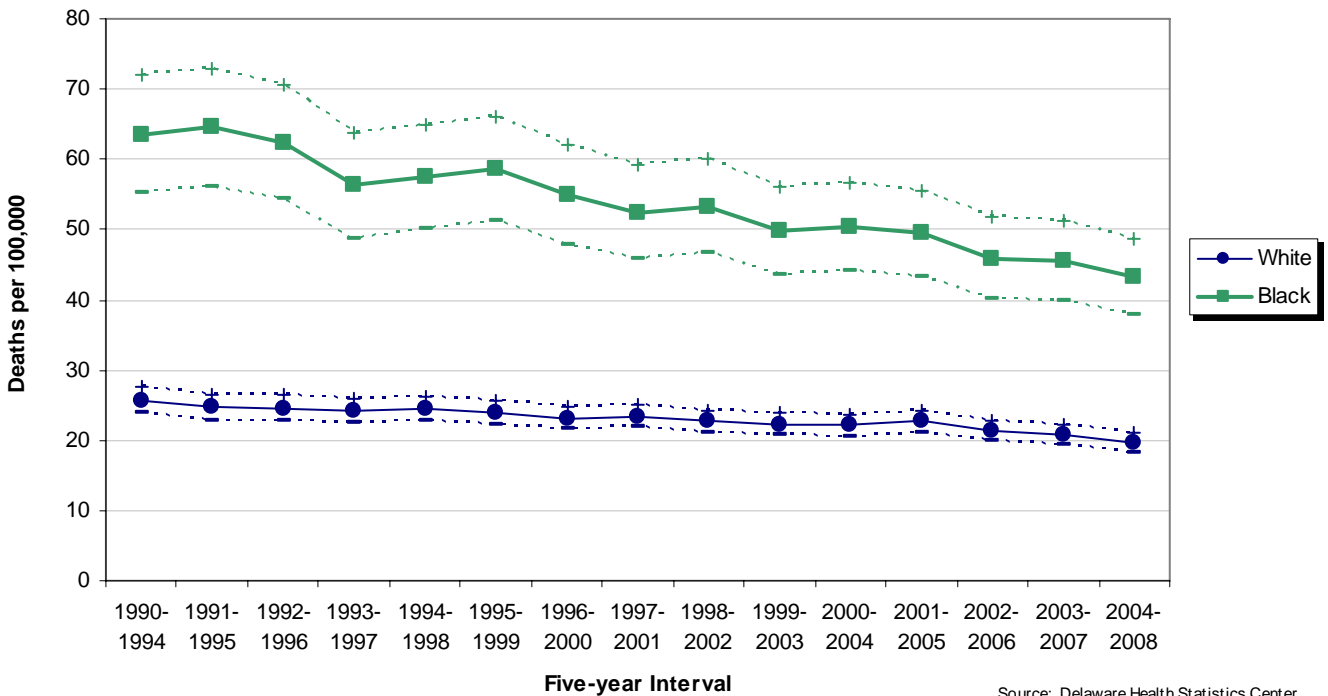
Five-year Interval

Source: Delaware Health Statistics Center

MORTALITY

Though black mortality rates for Diabetes have been declining since 1990-1994, they remained more than twice that of whites in 2004-2008.

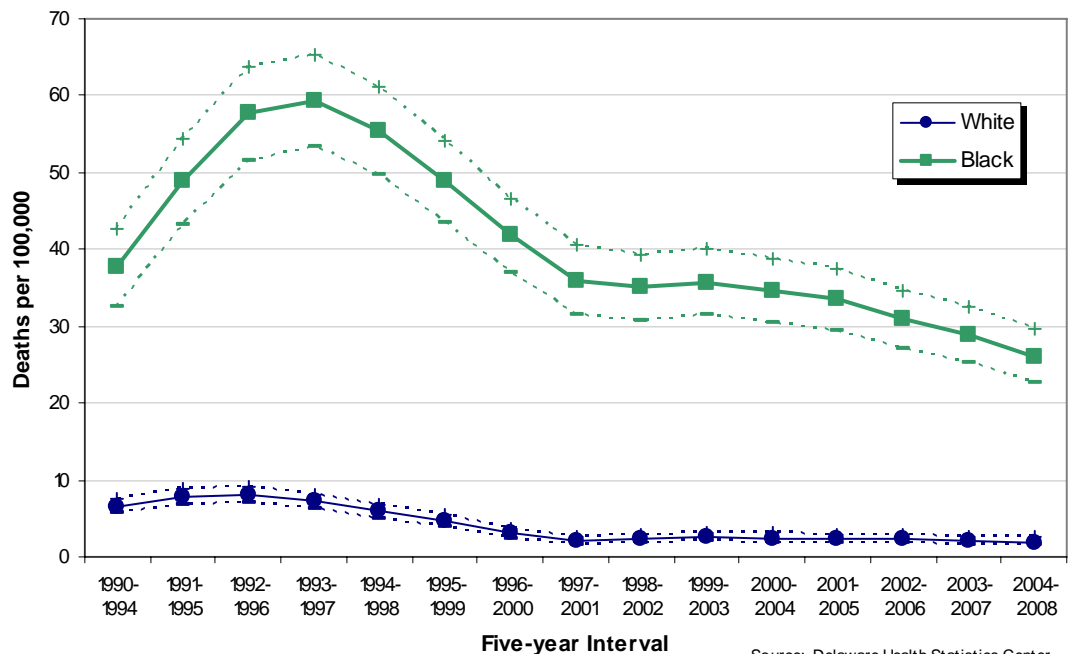
**Five-year Age-Adjusted Diabetes Mortality Rates by Race
Delaware, 1990-2008**



Source: Delaware Health Statistics Center

HIV/AIDS mortality has disproportionately affected Delaware's black population. Despite the black HIV/AIDS mortality rate decreasing significantly since its 1993-1997 peak, the 2004-2008 mortality rate of 26.1 deaths per 100,000 was more than 13 times the white rate. Though they made up only 21 percent of the total Delaware population in 2004-2008, blacks accounted for 78 percent of all deaths due to HIV/AIDS.

**Five-year Age-Adjusted HIV/AIDS Mortality Rates by Race
Delaware, 1990-2008**



Source: Delaware Health Statistics Center

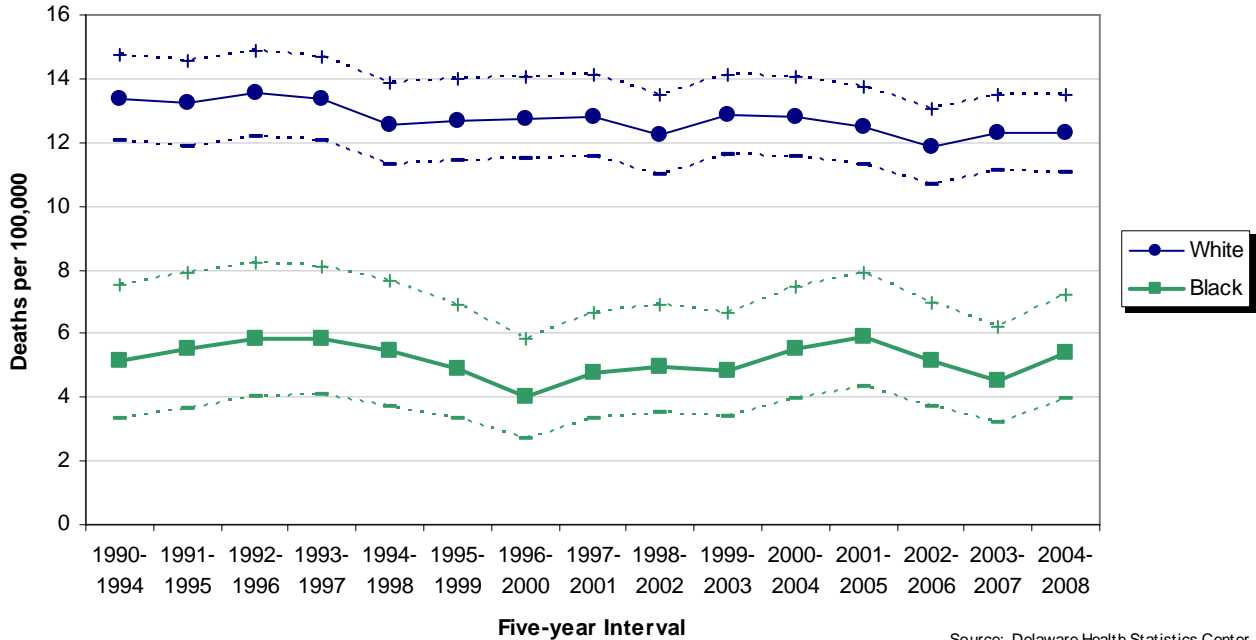
In 2004-2008, HIV was the fifth leading cause of death for black Delawareans; it ranked sixth for black males and fifth for black females.

For black females ages 25-44 it was the most common cause of death.

MORTALITY

Suicide mortality trends for both black and white populations remained fairly stable from 1990-1994 to 2004-2008, with the white rate (12.3) more than double that of the black rate (5.4).

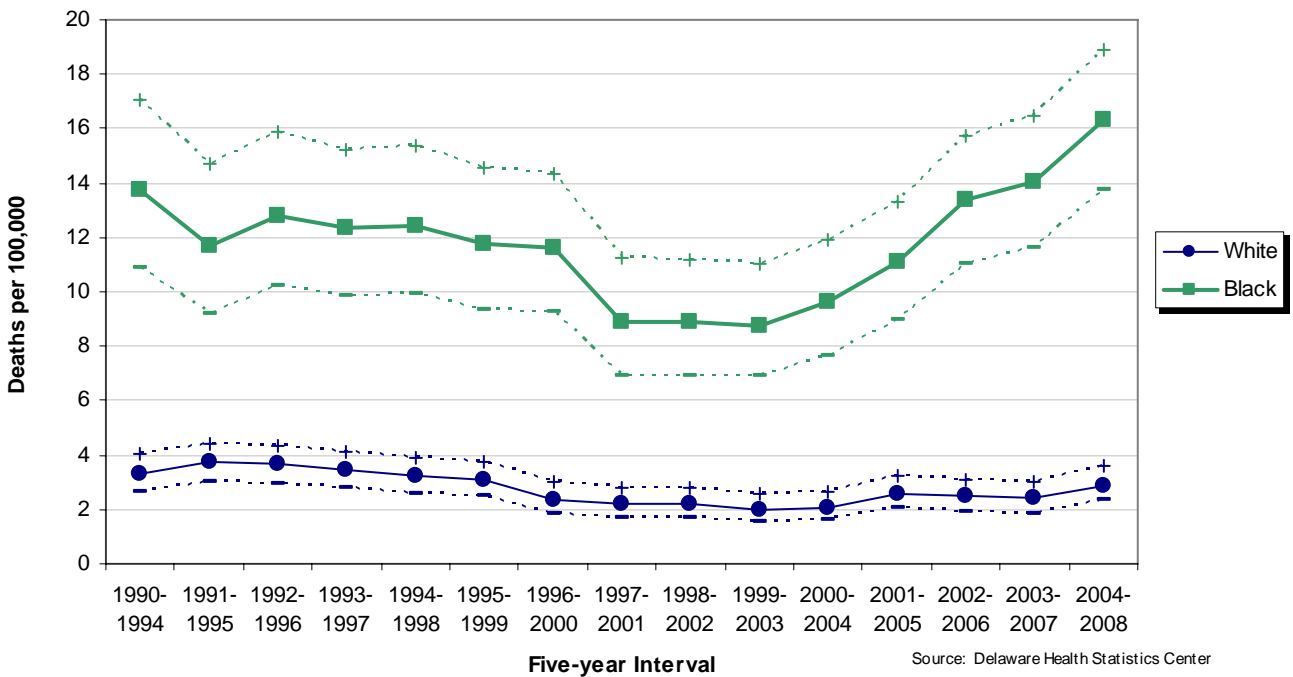
**Five-year Age-Adjusted Suicide Mortality Rates by Race
Delaware, 1990-2008**



Source: Delaware Health Statistics Center

After declining throughout most of the 90s and reaching their lowest point in 1999-2003, homicide mortality rates have risen 70 percent. The majority of the increase was accounted for by the 86 percent increase in black homicide mortality rates; white homicide mortality rates rose 44 percent during the same time period. In 2004-2008, the black homicide mortality rate was 16.3 and the white rate was 2.9 deaths per 100,000 population.

**Five-year Age-Adjusted Homicide Mortality Rates by Race
Delaware, 1990-2008**

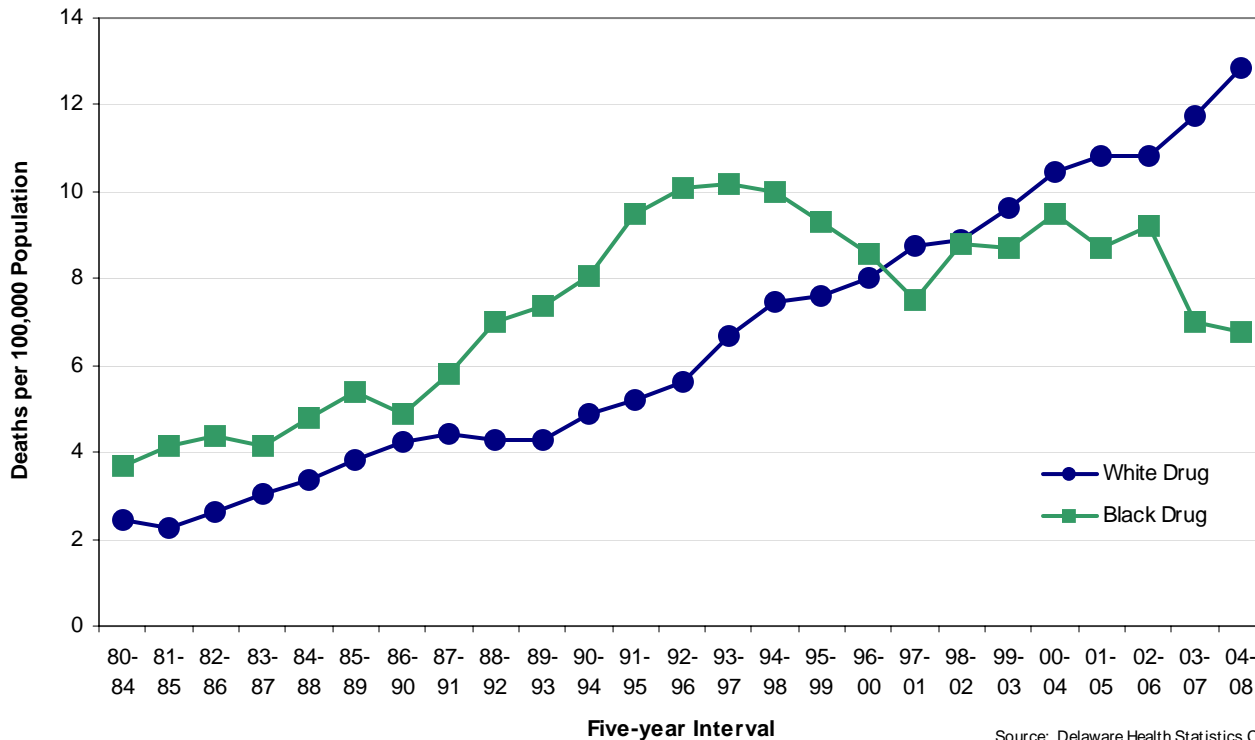


Source: Delaware Health Statistics Center

MORTALITY

Though black mortality rates for drug-induced deaths were historically higher than white rates, in 1994-1998 they began a four year decline that moved them just below white rates in 1997-2001. Since then, white mortality rates have remained higher and continued to rise; by 2004-2008, the white rate (12.8) was 89 percent higher than the black rate (6.8).

**Five-year Age-adjusted Mortality Rates for Drug-Induced Deaths by Race
Delaware, 1980-2008**



**Distribution of Drug-induced Deaths by Race, Sex, and Age Group
Delaware, 2004-2008**

Over 53 percent of all drug-induced deaths in 2004-2008 were white males. Of all the race-age groups, white males ages 25-34 were responsible for the single largest proportion (17 percent) of drug-induced deaths.

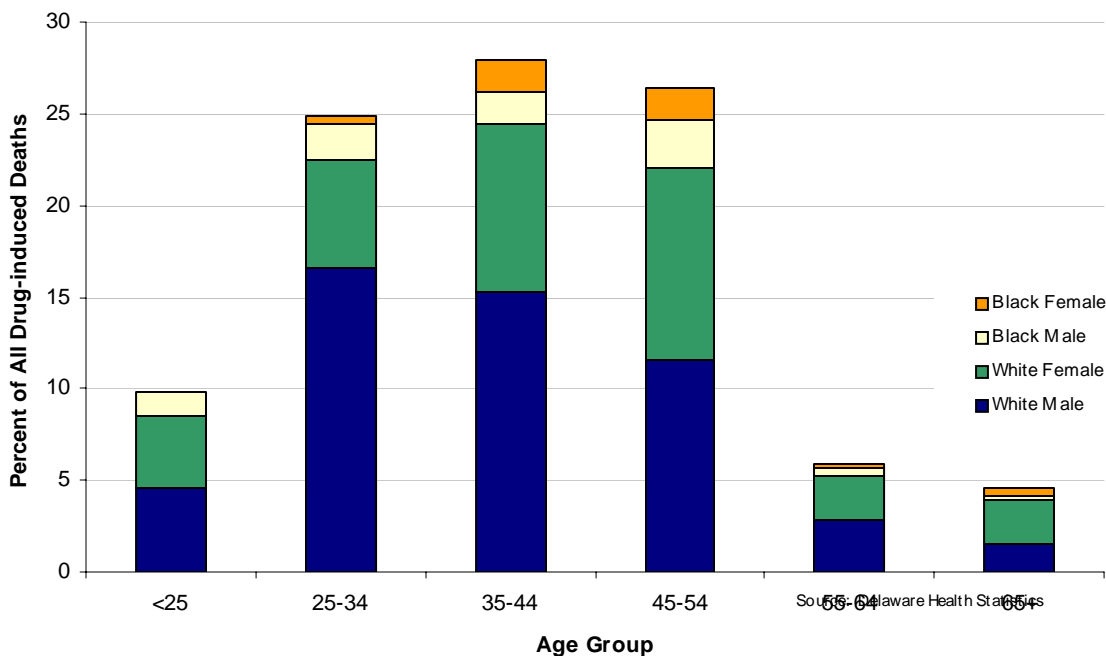


TABLE F-1
NUMBER OF DEATHS BY RACE

U.S., DELAWARE, COUNTIES AND CITY OF WILMINGTON, 1995-2008

Area/ Race	1995	1996	1997	1998	1999	2000	2001	2002	2003	2004	2005	2006	2007	2008
U.S.														
All Races	2312132	2314690	2314245	2337256	2391399	2403351	2416425	2443387	2448288	2397615	2448017	2426264	2423712	2473018
White	1987437	1992966	1996393	2015984	2061348	2071287	2079691	2102589	2103714	2056643	2098097	2077549	2074151	2120961
Black	286401	282089	276520	278440	285064	285826	287709	290051	291300	287315	292808	289971	289585	289306
Other	38294	39635	41332	42832	44987	46238	49025	50747	53274	53657	57112	58744	59976	62751
Delaware														
All Races	6281	6506	6510	6577	6669	6872	7114	6860	7067	7124	7424	7144	7246	7602
White	5124	5295	5449	5453	5555	5696	5886	5694	5782	5862	6129	5856	5985	6309
Black	1108	1166	1014	1086	1072	1131	1180	1111	1241	1204	1235	1225	1181	1217
Other	49	45	47	38	42	45	48	55	44	58	60	63	80	76
Kent														
All Races	966	1003	998	1015	1102	1022	1102	1113	1114	1154	1250	1219	1255	1367
White	790	813	837	835	924	822	900	916	878	948	1017	967	1018	1133
Black	169	183	147	173	167	184	194	187	224	193	224	234	219	220
Other	7	7	14	7	11	16	8	10	12	13	9	18	18	14
New Castle														
All Races	3796	3967	3951	4030	3931	4111	4234	3996	4129	4146	4229	4039	4101	4290
White	3030	3201	3250	3281	3217	3350	3435	3244	3299	3324	3381	3212	3294	3441
Black	744	749	677	731	692	741	774	718	809	793	809	794	771	802
Other	22	17	24	18	22	20	25	34	21	29	39	33	36	47
Wilmington														
All Races	944	890	864	850	789	826	850	779	843	782	765	728	705	726
White	448	436	479	423	395	430	421	392	413	358	362	337	345	334
Black	492	453	383	425	392	394	425	380	430	419	401	385	359	389
Other	4	1	2	2	2	2	4	7	0	5	2	6	1	3
Balance of NC County														
All Races	2852	3077	3087	3180	3142	3285	3384	3217	3286	3364	3464	3311	3396	3564
White	2582	2765	2771	2858	2822	2920	3014	2852	2886	2966	3019	2875	2949	3107
Black	252	296	294	306	300	347	349	338	379	374	408	409	412	413
Other	18	16	22	16	20	18	21	27	21	24	37	27	35	44
Sussex														
All Races	1519	1536	1561	1532	1636	1739	1778	1751	1824	1824	1945	1886	1890	1945
White	1304	1281	1362	1337	1414	1524	1551	1534	1605	1590	1731	1677	1673	1735
Black	195	234	190	182	213	206	212	206	208	218	202	197	191	195
Other	20	21	9	13	9	9	15	11	11	16	12	12	26	15

Note:
2008 US data are preliminary numbers from NCHS; 2008 preliminary deaths by race were not available at the time of production.

NDRACE

Sources:
Delaware Health Statistics Center
National Center for Health Statistics

TABLE F-2
NUMBER OF DEATHS BY AGE, RACE, AND HISPANIC ORIGIN
DELAWARE, COUNTIES AND CITY OF WILMINGTON, 2008

Area/ Age	Race									Hispanic Origin ²
	All Races	White	Black	American Indian ¹	Asian or Pacific Islander (API)				All Other	
					Chinese	Japanese	Filipino	Other API		
Delaware	7602	6309	1217	12	8	5	10	35	6	189
<1	101	49	52	0	0	0	0	0	0	15
1-4	9	6	1	1	0	0	0	0	1	1
5-14	14	10	3	0	1	0	0	0	0	1
15-24	91	59	31	0	0	1	0	0	0	7
25-34	153	101	51	0	0	0	1	0	0	20
35-44	247	172	70	1	0	0	0	4	0	11
45-54	644	459	177	1	1	0	2	3	1	19
55-64	908	709	185	0	2	0	2	9	1	26
65-74	1276	1049	212	2	1	1	2	8	1	31
75+	4159	3695	435	7	3	3	3	11	2	58
Unknown	0	0	0	0	0	0	0	0	0	0
Kent	1367	1133	220	2	1	3	2	5	1	33
<1	18	10	8	0	0	0	0	0	0	4
1-4	3	2	0	0	0	0	0	0	1	0
5-14	7	6	1	0	0	0	0	0	0	0
15-24	19	14	5	0	0	0	0	0	0	0
25-34	23	14	9	0	0	0	0	0	0	0
35-44	48	35	12	1	0	0	0	0	0	2
45-54	132	97	33	0	0	0	1	1	0	2
55-64	160	136	21	0	0	0	0	3	0	7
65-74	251	190	59	0	1	1	0	0	0	5
75+	706	629	72	1	0	2	1	1	0	13
Unknown	0	0	0	0	0	0	0	0	0	0
New Castle	4290	3441	802	4	6	1	6	27	3	116
<1	70	32	38	0	0	0	0	0	0	9
1-4	3	1	1	1	0	0	0	0	0	1
5-14	6	4	1	0	1	0	0	0	0	1
15-24	49	27	21	0	0	1	0	0	0	3
25-34	95	60	35	0	0	0	0	0	0	15
35-44	143	88	52	0	0	0	0	3	0	6
45-54	383	257	121	1	1	0	1	2	0	13
55-64	506	365	132	0	2	0	2	4	1	10
65-74	666	538	117	0	0	0	2	8	1	19
75+	2369	2069	284	2	2	0	1	10	1	39
Unknown	0	0	0	0	0	0	0	0	0	0
Wilmington	726	334	389	0	2	0	1	0	0	33
<1	19	7	12	0	0	0	0	0	0	7
1-4	0	0	0	0	0	0	0	0	0	0
5-14	2	1	1	0	0	0	0	0	0	1
15-24	12	3	9	0	0	0	0	0	0	1
25-34	27	6	21	0	0	0	0	0	0	3
35-44	38	9	29	0	0	0	0	0	0	4
45-54	90	28	62	0	0	0	0	0	0	5
55-64	93	31	60	0	1	0	1	0	0	1
65-74	96	39	57	0	0	0	0	0	0	3
75+	349	210	138	0	1	0	0	0	0	8
Unknown	0	0	0	0	0	0	0	0	0	0
Balance of NC County	3564	3107	413	4	4	1	5	27	3	83
<1	51	25	26	0	0	0	0	0	0	2
1-4	3	1	1	1	0	0	0	0	0	1
5-14	4	3	0	0	1	0	0	0	0	0
15-24	37	24	12	0	0	1	0	0	0	2
25-34	68	54	14	0	0	0	0	0	0	12
35-44	105	79	23	0	0	0	0	3	0	2
45-54	293	229	59	1	1	0	1	2	0	8
55-64	413	334	72	0	1	0	1	4	1	9
65-74	570	499	60	0	0	0	2	8	1	16
75+	2020	1859	146	2	1	0	1	10	1	31
Unknown	0	0	0	0	0	0	0	0	0	0
Sussex	1945	1735	195	6	1	1	2	3	2	40
<1	13	7	6	0	0	0	0	0	0	2
1-4	3	3	0	0	0	0	0	0	0	0
5-14	1	0	1	0	0	0	0	0	0	0
15-24	23	18	5	0	0	0	0	0	0	4
25-34	35	27	7	0	0	0	1	0	0	5
35-44	56	49	6	0	0	0	0	1	0	3
45-54	129	105	23	0	0	0	0	0	1	4
55-64	242	208	32	0	0	0	0	2	0	9
65-74	359	321	36	2	0	0	0	0	0	7
75+	1084	997	79	4	1	1	1	0	1	6
Unknown	0	0	0	0	0	0	0	0	0	0

DETRACE

Notes:

1. Includes any deaths that may have occurred to Aleut and Eskimo Indians.
2. People of Hispanic origin may be of any race. See *Hispanic Origin* and *Race* in the Technical Notes.

Source:

Delaware Health Statistics Center

TABLE F-3
NUMBER OF DEATHS BY AGE AND RACE
DELAWARE, COUNTIES AND CITY OF WILMINGTON, 2008

(BOTH SEXES)

Area/ Race	Age of Decedent													
	Total	< 1	1-4	5-9	10-14	15-19	20-24	25-34	35-44	45-54	55-64	65-74	75+	Unk
Delaware														
All Races	7602	101	9	7	7	32	59	153	247	644	908	1276	4159	0
White	6309	49	6	4	6	16	43	101	172	459	709	1049	3695	0
Black	1217	52	1	2	1	16	15	51	70	177	185	212	435	0
Other	76	0	2	1	0	0	1	1	5	8	14	15	29	0
Kent														
All Races	1367	18	3	4	3	5	14	23	48	132	160	251	706	0
White	1133	10	2	3	3	3	11	14	35	97	136	190	629	0
Black	220	8	0	1	0	2	3	9	12	33	21	59	72	0
Other	14	0	1	0	0	0	0	0	1	2	3	2	5	0
New Castle														
All Races	4290	70	3	3	3	17	32	95	143	383	506	666	2369	0
White	3441	32	1	1	3	5	22	60	88	257	365	538	2069	0
Black	802	38	1	1	0	12	9	35	52	121	132	117	284	0
Other	47	0	1	1	0	0	1	0	3	5	9	11	16	0
Wilmington														
All Races	726	19	0	1	1	6	6	27	38	90	93	96	349	0
White	334	7	0	0	1	1	2	6	9	28	31	39	210	0
Black	389	12	0	1	0	5	4	21	29	62	60	57	138	0
Other	3	0	0	0	0	0	0	0	0	0	2	0	1	0
Balance of NC County														
All Races	3564	51	3	2	2	11	26	68	105	293	413	570	2020	0
White	3107	25	1	1	2	4	20	54	79	229	334	499	1859	0
Black	413	26	1	0	0	7	5	14	23	59	72	60	146	0
Other	44	0	1	1	0	0	1	0	3	5	7	11	15	0
Sussex														
All Races	1945	13	3	0	1	10	13	35	56	129	242	359	1084	0
White	1735	7	3	0	0	8	10	27	49	105	208	321	997	0
Black	195	6	0	0	1	2	3	7	6	23	32	36	79	0
Other	15	0	0	0	0	0	0	1	1	1	2	2	8	0

Source:
Delaware Health Statistics Center

NDAGERAC

TABLE F-4
NUMBER OF DEATHS BY AGE AND RACE
DELAWARE, COUNTIES AND CITY OF WILMINGTON, 2008

(MALES)

Area/ Race	Age of Decedent													
	Total	< 1	1-4	5-9	10-14	15-19	20-24	25-34	35-44	45-54	55-64	65-74	75+	Unk
Delaware														
All Races	3752	58	5	5	1	22	41	109	152	384	525	699	1751	0
White	3108	32	4	2	1	10	30	70	115	281	421	569	1573	0
Black	608	26	1	2	0	12	10	38	34	99	97	120	169	0
Other	36	0	0	1	0	0	1	1	3	4	7	10	9	0
Kent														
All Races	673	13	1	3	1	3	12	16	31	84	90	137	282	0
White	551	8	1	2	1	2	10	10	22	62	79	101	253	0
Black	118	5	0	1	0	1	2	6	8	21	11	36	27	0
Other	4	0	0	0	0	0	0	0	1	1	0	0	2	0
New Castle														
All Races	2117	39	2	2	0	13	20	68	83	222	296	356	1016	0
White	1701	21	1	0	0	3	13	41	60	155	218	283	906	0
Black	393	18	1	1	0	10	6	27	22	65	73	65	105	0
Other	23	0	0	1	0	0	1	0	1	2	5	8	5	0
Wilmington														
All Races	328	8	0	1	0	4	5	23	21	46	53	47	120	0
White	142	4	0	0	0	0	1	5	9	18	18	16	71	0
Black	184	4	0	1	0	4	4	18	12	28	33	31	49	0
Other	2	0	0	0	0	0	0	0	0	0	2	0	0	0
Balance of NC County														
All Races	1789	31	2	1	0	9	15	45	62	176	243	309	896	0
White	1559	17	1	0	0	3	12	36	51	137	200	267	835	0
Black	209	14	1	0	0	6	2	9	10	37	40	34	56	0
Other	21	0	0	1	0	0	1	0	1	2	3	8	5	0
Sussex														
All Races	962	6	2	0	0	6	9	25	38	78	139	206	453	0
White	856	3	2	0	0	5	7	19	33	64	124	185	414	0
Black	97	3	0	0	0	1	2	5	4	13	13	19	37	0
Other	9	0	0	0	0	0	0	1	1	1	2	2	2	0

Source:
Delaware Health Statistics Center

NDRCAGML

TABLE F-5
NUMBER OF DEATHS BY AGE AND RACE
DELAWARE, COUNTIES AND CITY OF WILMINGTON, 2008

(FEMALES)

Area/ Race	Age of Decedent													
	Total	< 1	1-4	5-9	10-14	15-19	20-24	25-34	35-44	45-54	55-64	65-74	75+	Unk
Delaware														
All Races	3850	43	4	2	6	10	18	44	95	260	383	577	2408	0
White	3201	17	2	2	5	6	13	31	57	178	288	480	2122	0
Black	609	26	0	0	1	4	5	13	36	78	88	92	266	0
Other	40	0	2	0	0	0	0	0	2	4	7	5	20	0
Kent														
All Races	694	5	2	1	2	2	2	7	17	48	70	114	424	0
White	582	2	1	1	2	1	1	4	13	35	57	89	376	0
Black	102	3	0	0	0	1	1	3	4	12	10	23	45	0
Other	10	0	1	0	0	0	0	0	0	1	3	2	3	0
New Castle														
All Races	2173	31	1	1	3	4	12	27	60	161	210	310	1353	0
White	1740	11	0	1	3	2	9	19	28	102	147	255	1163	0
Black	409	20	0	0	0	2	3	8	30	56	59	52	179	0
Other	24	0	1	0	0	0	0	0	2	3	4	3	11	0
Wilmington														
All Races	398	11	0	0	1	2	1	4	17	44	40	49	229	0
White	192	3	0	0	1	1	1	1	0	10	13	23	139	0
Black	205	8	0	0	0	1	0	3	17	34	27	26	89	0
Other	1	0	0	0	0	0	0	0	0	0	0	0	1	0
Balance of NC County														
All Races	1775	20	1	1	2	2	11	23	43	117	170	261	1124	0
White	1548	8	0	1	2	1	8	18	28	92	134	232	1024	0
Black	204	12	0	0	0	1	3	5	13	22	32	26	90	0
Other	23	0	1	0	0	0	0	0	2	3	4	3	10	0
Sussex														
All Races	983	7	1	0	1	4	4	10	18	51	103	153	631	0
White	879	4	1	0	0	3	3	8	16	41	84	136	583	0
Black	98	3	0	0	1	1	1	2	2	10	19	17	42	0
Other	6	0	0	0	0	0	0	0	0	0	0	0	6	0

Source:
Delaware Health Statistics Center

NDRCAGFE

TABLE F-6
MORTALITY TRENDS BY RACE, ETHNICITY, GENDER, AND AGE
DELAWARE, 1998-2008

CHARACTERISTIC	Year										
	1998	1999	2000	2001	2002	2003	2004	2005	2006	2007	2008
Resident Deaths											
Number	6577	6669	6872	7114	6860	7067	7124	7424	7144	7246	7602
Crude Rate	861.6	860.5	873.8	894.9	852.9	867.6	862.2	886.1	840.7	841.5	872.2
AADR ²	899.9	886.2	881.5	891.1	837.6	837.0	815.7	820.1	764.3	749.2	762.4
Decedent's Race/Ethnicity											
White											
Number	5453	5555	5696	5886	5694	5782	5862	6129	5856	5985	6309
Percent	82.9%	83.3%	82.9%	82.7%	83.0%	81.8%	82.3%	82.6%	82.0%	82.6%	83.0%
AADR ²	866.9	859.9	847.9	856.3	809.7	798.0	785.6	793.0	736.8	727.8	744.5
Black											
Number	1086	1072	1131	1180	1111	1241	1204	1235	1225	1181	1217
Percent	16.5%	16.1%	16.5%	16.6%	16.2%	17.6%	16.9%	16.6%	17.1%	16.3%	16.0%
AADR ²	1145.2	1078.5	1089.7	1088.3	1000.3	1076.7	1019.6	992.2	922.8	877.9	860.9
Hispanic ¹											
Number	72	93	101	90	95	105	121	121	126	178	189
Percent	1.1%	1.4%	1.5%	1.3%	1.4%	1.5%	1.7%	1.6%	1.8%	2.5%	2.5%
AADR ²	612.4	683.9	762.4	612.7	622.7	594.1	688.5	580.4	485.1	749.9	747.2
Decedent's Gender											
Female											
Number	3284	3326	3503	3663	3486	3559	3517	3746	3590	3614	3850
Percent	49.9%	49.9%	51.0%	51.5%	50.8%	50.4%	49.4%	50.5%	50.3%	49.9%	50.6%
AADR ²	748.7	736.4	749.5	769.8	712.6	706.3	679.6	694.7	647.4	629.4	651.6
Male											
Number	3293	3343	3369	3451	3374	3508	3607	3678	3554	3632	3752
Percent	50.1%	50.1%	49.0%	48.5%	49.2%	49.6%	50.6%	49.5%	49.7%	50.1%	49.4%
AADR ²	1115.3	1095.6	1055.0	1056.1	1002.6	1001.3	1001.1	981.5	910.4	898.0	900.4
Decedent's age											
<1											
Number	103	81	102	114	96	107	97	106	99	91	101
Percent	1.6%	1.2%	1.5%	1.6%	1.4%	1.5%	1.4%	1.4%	1.4%	1.3%	1.3%
1-14											
Number	32	31	41	31	39	22	44	26	20	15	23
Percent	0.5%	0.5%	0.6%	0.4%	0.6%	0.3%	0.6%	0.4%	0.3%	0.2%	0.3%
15-24											
Number	70	61	85	86	85	101	97	78	92	88	91
Percent	1.1%	0.9%	1.2%	1.2%	1.2%	1.4%	1.4%	1.1%	1.3%	1.2%	1.2%
25-44											
Number	399	408	426	427	403	389	387	375	427	385	400
Percent	6.1%	6.1%	6.2%	6.0%	5.9%	5.5%	5.4%	5.1%	6.0%	5.3%	5.3%
45-64											
Number	1125	1101	1168	1276	1214	1327	1338	1406	1410	1418	1552
Percent	17.1%	16.5%	17.0%	17.9%	17.7%	18.8%	18.8%	18.9%	19.7%	19.6%	20.4%
65-74											
Number	1363	1452	1332	1339	1276	1244	1310	1272	1232	1238	1276
Percent	20.7%	21.8%	19.4%	18.8%	18.6%	17.6%	18.4%	17.1%	17.2%	17.1%	16.8%
75-84											
Number	2018	1989	1991	2139	2061	2096	2039	2160	1960	2022	2043
Percent	30.7%	29.8%	29.0%	30.1%	30.0%	29.7%	28.6%	29.1%	27.4%	27.9%	26.9%
85+											
Number	1467	1546	1727	1702	1686	1781	1812	2001	1904	1985	2116
Percent	22.3%	23.2%	25.1%	23.9%	24.6%	25.2%	25.4%	27.0%	26.7%	27.4%	27.8%

Notes:

- Hispanic population numbers used in rate calculations are based on U.S. Census estimates. Because of the small numbers of Hispanic deaths and the resulting variability in annual mortality rates, Hispanic mortality rates should be interpreted with caution.
- Age-Adjusted Death Rate per 100,000, adjusted to 2000 U.S. Standard Population.
- Figures for decedent's age will not equal total number of deaths due to 4 deaths of unknown age.

Sources:

Delaware Health Statistics Center
U.S. Census

MORTREND

TABLE F-7
NUMBER OF DEATHS AND MEDIAN AGE AT DEATH BY SEX
FOR TWENTY LEADING CAUSES, ALCOHOL-INDUCED DEATHS, AND DRUG-INDUCED DEATHS

DELAWARE, 2008

Cause of Death ¹	Deaths		Median Age at Death	
	Number	Percent	Male	Female
All causes	7,602	100.0	73	80
Malignant neoplasms	1,903	25.0	72	72
Diseases of heart	1,769	23.3	77	84
Chronic lower respiratory diseases	470	6.2	77	80
Dementia	374	4.9	86	88
Cerebrovascular diseases	363	4.8	77	83
Accidents (unintentional injuries)	351	4.6	43	53
Diabetes mellitus	217	2.9	71	81
Alzheimer's disease	203	2.7	84	88
Nephritis, nephrotic syndrome & nephrosis	187	2.5	78	83
Septicemia	138	1.8	70	74
Influenza & pneumonia	136	1.8	79	85
Intentional self-harm (suicide)	108	1.4	46	47
Chronic liver disease & cirrhosis	91	1.2	55	63
Other diseases of respiratory system	83	1.1	79	77
Assault (homicide)	66	0.9	29	31
Other diseases of circulatory system	65	0.9	71	85
Human immunodeficiency virus (HIV) disease	58	0.8	49	48
Certain conditions originating in the perinatal period	54	0.7	0	0
Essential hypertension & hypertensive renal disease	51	0.7	64	84
Parkinson's disease	50	0.7	82	81
Alcohol-induced deaths²	75	1.0	53	55
Drug-induced deaths²	124	1.6	40	44

LCODARBS

Notes:

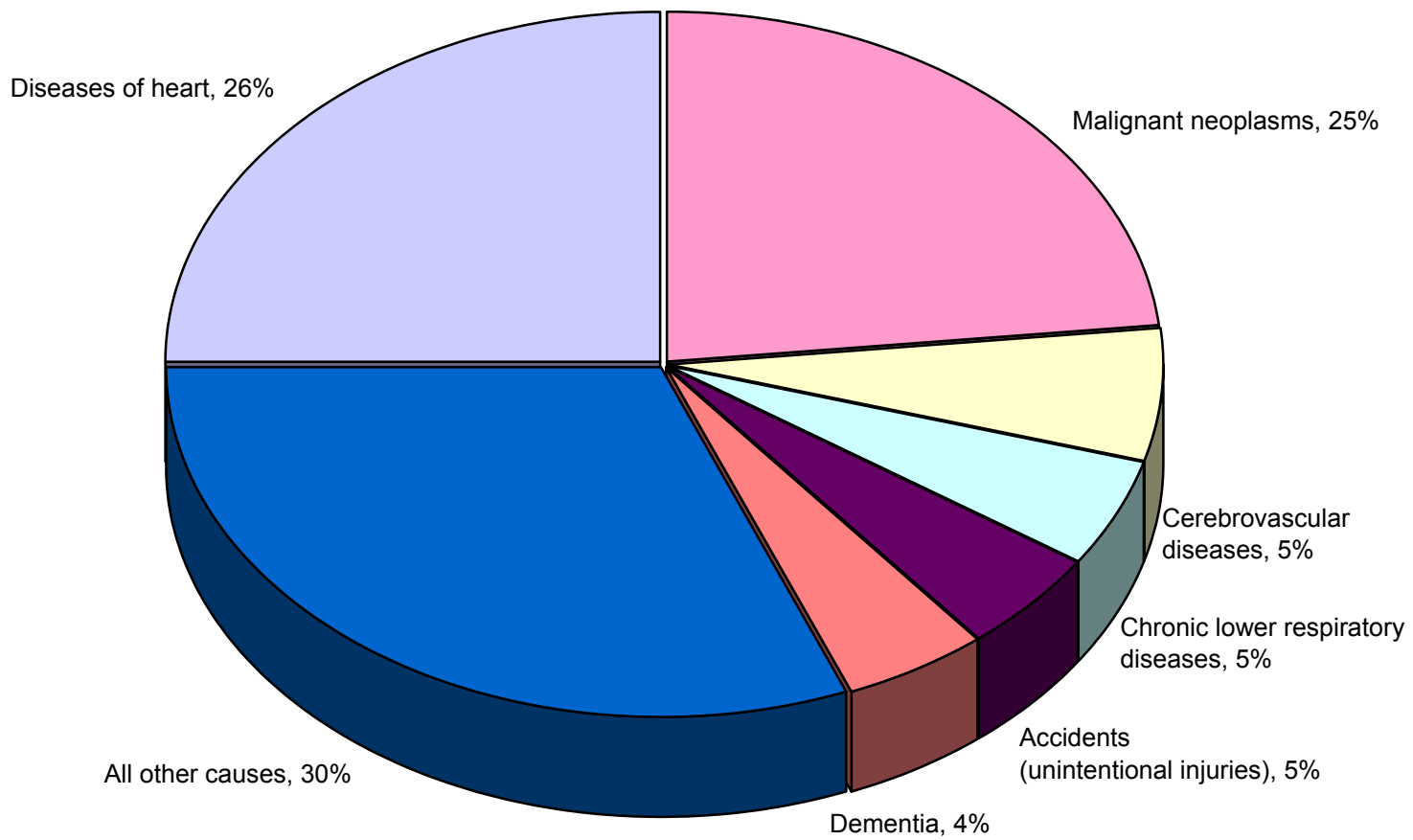
1. Classified according to ICD-10 Codes, Tenth Revision. See Appendix E for listing of ICD-10 Codes.
2. Included in selected categories.

Source:

Delaware Health Statistics Center

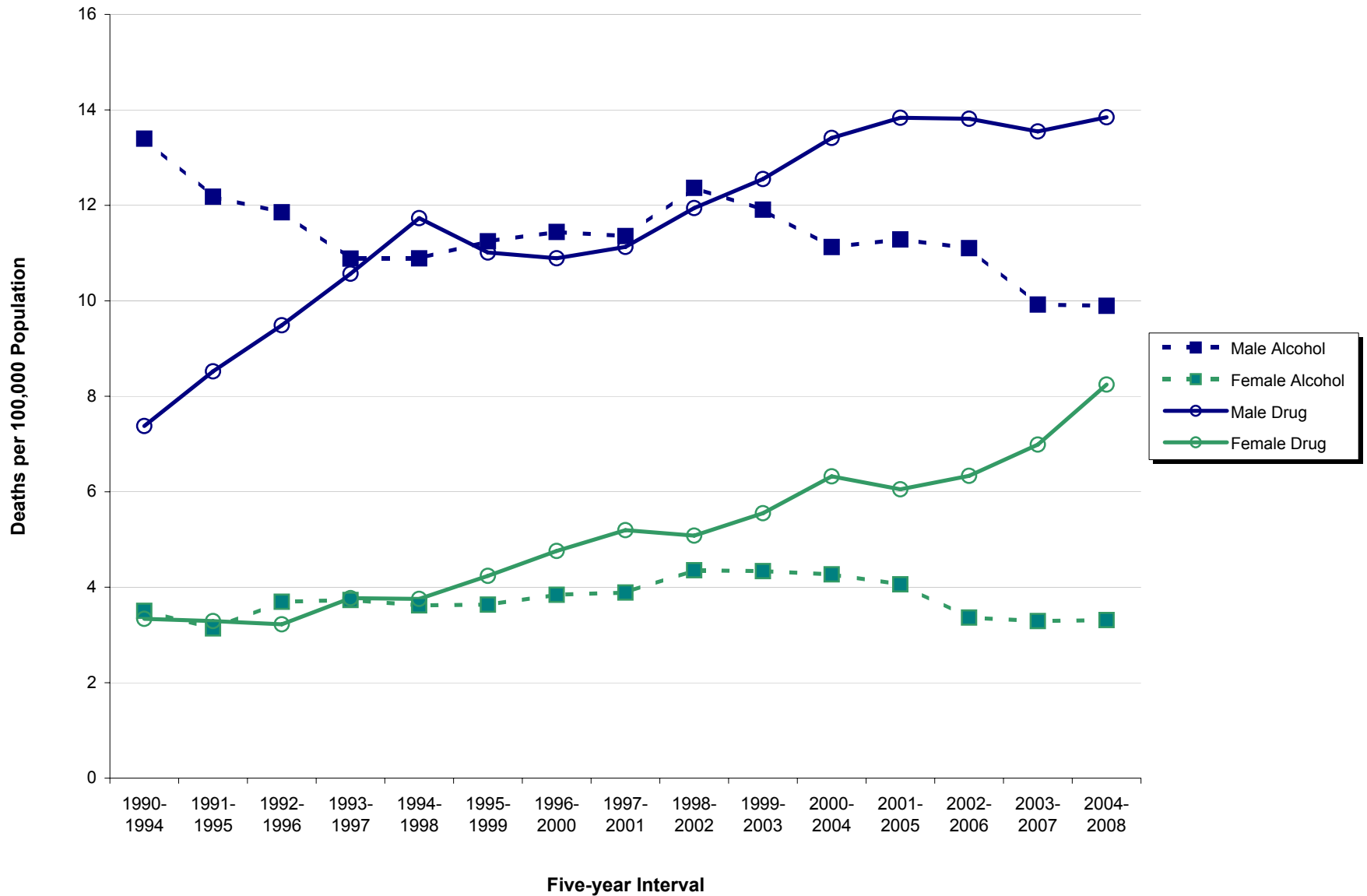
**Figure F-1
Leading Causes of Death**

Delaware, 2008



Source: Delaware Health Statistics Center

Figure F-2
Five-year Age-adjusted Drug- and Alcohol-Induced Mortality Rates by Sex
Delaware, 1990-2008



Source: Delaware Health Statistics Center

TABLE F-8
LEADING CAUSES OF DEATH
COUNTIES AND CITY OF WILMINGTON, 2004-2008

Kent

Cause of Death*	Deaths	
	#	%
Diseases of heart	1783	28.6
Malignant neoplasms	1547	24.8
Chronic lower respiratory diseases	393	6.3
Accidents (unintentional injuries)	291	4.7
Cerebrovascular diseases	275	4.4
Diabetes mellitus	207	3.3
Septicemia	132	2.1
Nephritis, nephrotic syndrome & nephrosis	124	2.0
Influenza & pneumonia	121	1.9
Alzheimer's disease	121	1.9
Intentional self-harm (suicide)	78	1.2
Chronic liver disease & cirrhosis	63	1.0
Essential hypertension & hypertensive renal disease	55	0.9
In situ & benign neoplasms, & neoplasms of unk behavior	44	0.7
Human immunodeficiency virus (HIV) disease	41	0.7
Certain conditions originating in the perinatal period	37	0.6
All other causes	933	14.9
Total	6245	100.0

New Castle

Cause of Death*	Deaths	
	#	%
Diseases of heart	5189	24.9
Malignant neoplasms	5049	24.3
Cerebrovascular diseases	1169	5.6
Chronic lower respiratory diseases	1053	5.1
Accidents (unintentional injuries)	865	4.2
Diabetes mellitus	608	2.9
Alzheimer's disease	469	2.3
Nephritis, nephrotic syndrome & nephrosis	457	2.2
Septicemia	362	1.7
Influenza & pneumonia	358	1.7
Intentional self-harm (suicide)	275	1.3
Human immunodeficiency virus (HIV) disease	212	1.0
Chronic liver disease & cirrhosis	205	1.0
Certain conditions originating in the perinatal period	196	0.9
Assault (homicide)	188	0.9
Essential hypertension & hypertensive renal disease	168	0.8
All other causes	3982	19.1
Total	20805	100.0

City of Wilmington

Cause of Death*	Deaths	
	#	%
Diseases of heart	928	25.0
Malignant neoplasms	732	19.8
Cerebrovascular diseases	258	7.0
Chronic lower respiratory diseases	167	4.5
Diabetes mellitus	137	3.7
Accidents (unintentional injuries)	134	3.6
Human immunodeficiency virus (HIV) disease	128	3.5
Nephritis, nephrotic syndrome & nephrosis	91	2.5
Assault (homicide)	80	2.2
Septicemia	62	1.7
Influenza & pneumonia	57	1.5
Essential hypertension & hypertensive renal disease	48	1.3
Certain conditions originating in the perinatal period	47	1.3
Chronic liver disease & cirrhosis	43	1.2
Alzheimer's disease	42	1.1
Intentional self-harm (suicide)	35	0.9
All other causes	717	19.3
Total	3706	100.0

Sussex

Cause of Death*	Deaths	
	#	%
Diseases of heart	2571	27.1
Malignant neoplasms	2516	26.5
Chronic lower respiratory diseases	500	5.3
Accidents (unintentional injuries)	401	4.2
Cerebrovascular diseases	396	4.2
Alzheimer's disease	335	3.5
Diabetes mellitus	259	2.7
Influenza & pneumonia	211	2.2
Nephritis, nephrotic syndrome & nephrosis	173	1.8
Septicemia	122	1.3
Intentional self-harm (suicide)	110	1.2
Chronic liver disease & cirrhosis	109	1.1
Pneumonitis due to solids & liquids	88	0.9
Parkinson's disease	73	0.8
Aortic aneurysm and dissection	64	0.7
Essential hypertension & hypertensive renal disease	61	0.6
All other causes	1501	15.8
Total	9490	100.0

LCODCTW

Note:

*Cause of death categories were derived using the NCHS list of 50 rankable causes of death as specified by NCHS. For specific codes, see Appendix E.

Source:

Delaware Health Statistics Center

TABLE F-9
TEN LEADING CAUSES OF DEATH BY SEX AND RACE GROUP
DELAWARE, 2004-2008

All Races, Male

Cause of Death*	Deaths	
	#	%
Diseases of heart	4845	26.6
Malignant neoplasms	4738	26.0
Accidents (unintentional injuries)	1010	5.5
Chronic lower respiratory diseases	917	5.0
Cerebrovascular diseases	727	4.0
Diabetes mellitus	535	2.9
Nephritis, nephrotic syndrome & nephrosis	385	2.1
Intentional self-harm (suicide)	365	2.0
Influenza & pneumonia	326	1.8
Alzheimer's disease	285	1.6
All other causes	4090	22.4
Total	18223	100.0

All Races, Female

Cause of Death*	Deaths	
	#	%
Diseases of heart	4698	25.6
Malignant neoplasms	4374	23.9
Cerebrovascular diseases	1113	6.1
Chronic lower respiratory diseases	1029	5.6
Alzheimer's disease	640	3.5
Accidents (unintentional injuries)	547	3.0
Diabetes mellitus	539	2.9
Nephritis, nephrotic syndrome & nephrosis	369	2.0
Influenza & pneumonia	364	2.0
Septicemia	335	1.8
All other causes	4309	23.5
Total	18317	100.0

White, Both Sexes

Cause of Death*	Deaths	
	#	%
Diseases of heart	8000	26.5
Malignant neoplasms	7659	25.4
Chronic lower respiratory diseases	1746	5.8
Cerebrovascular diseases	1492	5.0
Accidents (unintentional injuries)	1333	4.4
Alzheimer's disease	840	2.8
Diabetes mellitus	794	2.6
Influenza & pneumonia	597	2.0
Nephritis, nephrotic syndrome & nephrosis	561	1.9
Septicemia	484	1.6
All other causes	6635	22.0
Total	30141	100.0

Black, Both Sexes

Cause of Death*	Deaths	
	#	%
Diseases of heart	1461	24.1
Malignant neoplasms	1364	22.5
Cerebrovascular diseases	336	5.5
Diabetes mellitus	264	4.4
Human immunodeficiency virus (HIV) disease	223	3.7
Accidents (unintentional injuries)	198	3.3
Chronic lower respiratory diseases	194	3.2
Nephritis, nephrotic syndrome & nephrosis	186	3.1
Assault (homicide)	156	2.6
Certain conditions originating in the perinatal period	148	2.4
All other causes	1532	25.3
Total	6062	100.0

LCODMFWB

Hispanic, Both Sexes

Cause of Death*	Deaths	
	#	%
Diseases of heart	128	17.4
Malignant neoplasms	120	16.3
Accidents (unintentional injuries)	107	14.6
Cerebrovascular diseases	41	5.6
Certain conditions originating in the perinatal period	31	4.2
Chronic lower respiratory diseases	28	3.8
Assault (homicide)	23	3.1
Diabetes mellitus	17	2.3
Intentional self-harm (suicide)	16	2.2
Congenital malformations, deformations, & chromosomal abnormalities	15	2.0
All other causes	209	28.4
Total	735	100.0

Note:

*Cause of death categories were derived using the NCHS list of 50 rankable causes of death as specified by NCHS. For specific codes, see Appendix E.

Source:

Delaware Health Statistics Center

TABLE F-10
TEN LEADING CAUSES OF DEATH BY RACE-SEX GROUP
DELAWARE, 2004-2008

White Male

Cause of Death*	Deaths	
	#	%
Diseases of heart	4072	27.2
Malignant neoplasms	4004	26.7
Accidents (unintentional injuries)	860	5.7
Chronic lower respiratory diseases	804	5.4
Cerebrovascular diseases	567	3.8
Diabetes mellitus	403	2.7
Intentional self-harm (suicide)	320	2.1
Nephritis, nephrotic syndrome & nephrosis	290	1.9
Influenza & pneumonia	274	1.8
Alzheimer's disease	262	1.8
All other causes	3113	20.8
Total	14969	100.0

White Females

Cause of Death*	Deaths	
	#	%
Diseases of heart	3928	25.9
Malignant neoplasms	3655	24.1
Chronic lower respiratory diseases	942	6.2
Cerebrovascular diseases	925	6.1
Alzheimer's disease	578	3.8
Accidents (unintentional injuries)	473	3.1
Diabetes mellitus	391	2.6
Influenza & pneumonia	323	2.1
Nephritis, nephrotic syndrome & nephrosis	271	1.8
Septicemia	254	1.7
All other causes	3432	22.6
Total	15172	100.0

Black Males

Cause of Death*	Deaths	
	#	%
Diseases of heart	725	23.5
Malignant neoplasms	693	22.5
Cerebrovascular diseases	153	5.0
Assault (homicide)	139	4.5
Accidents (unintentional injuries)	130	4.2
Human immunodeficiency virus (HIV) disease	124	4.0
Diabetes mellitus	123	4.0
Chronic lower respiratory diseases	108	3.5
Nephritis, nephrotic syndrome & nephrosis	93	3.0
Certain conditions originating in the perinatal period	77	2.5
All other causes	714	23.2
Total	3079	100.0

Black Females

Cause of Death*	Deaths	
	#	%
Diseases of heart	736	24.7
Malignant neoplasms	671	22.5
Cerebrovascular diseases	183	6.1
Diabetes mellitus	141	4.7
Human immunodeficiency virus (HIV) disease	99	3.3
Nephritis, nephrotic syndrome & nephrosis	93	3.1
Chronic lower respiratory diseases	86	2.9
Septicemia	76	2.5
Certain conditions originating in the perinatal period	71	2.4
Accidents (unintentional injuries)	68	2.3
All other causes	759	25.4
Total	2983	100.0

Hispanic Males

Cause of Death*	Deaths	
	#	%
Accidents (unintentional injuries)	87	19.7
Diseases of heart	80	18.1
Malignant neoplasms	64	14.5
Assault (homicide)	19	4.3
Certain conditions originating in the perinatal period	19	4.3
Cerebrovascular diseases	19	4.3
Chronic lower respiratory diseases	15	3.4
Intentional self-harm (suicide)	13	2.9
Chronic liver disease & cirrhosis	10	2.3
Birth defects ¹	7	1.6
All other causes	109	24.7
Total	442	100.0

Hispanic Females

Cause of Death*	Deaths	
	#	%
Malignant neoplasms	56	19.1
Diseases of heart	48	16.4
Cerebrovascular diseases	22	7.5
Accidents (unintentional injuries)	20	6.8
Chronic lower respiratory diseases	13	4.4
Certain conditions originating in the perinatal period	12	4.1
Diabetes mellitus	12	4.1
Alzheimer's disease	11	3.8
Birth defects ¹	8	2.7
Septicemia	8	2.7
All other causes	83	28.3
Total	293	100.0

Notes:

*Cause of death categories were derived using the NCHS list of 50 rankable causes of death as specified by NCHS. For specific codes, see Appendix E.

1. Birth defects refer to deaths due to congenital malformations, deformations, & chromosomal abnormalities.

Source:

Delaware Health Statistics Center

LCODRCS

TABLE F-11
TEN LEADING CAUSES OF DEATH BY AGE
DELAWARE, 2004-2008

1-4 Years

Cause of Death*	Deaths	
	Number	Percent
Accidents (unintentional injuries)	22	37.9
Malignant neoplasms	7	12.1
Birth defects ¹	6	10.3
Diseases of heart	4	6.9
Influenza & pneumonia	3	5.2
Cerebrovascular diseases	3	5.2
Assault (homicide)	1	1.7
Certain conditions originating in the perinatal period	1	1.7
Other	11	19.0
Total	58	100.0

5-14 Years

Cause of Death*	Deaths	
	Number	Percent
Accidents (unintentional injuries)	21	30.0
Malignant neoplasms	11	15.7
Assault (homicide)	5	7.1
Birth defects ¹	5	7.1
Diseases of heart	5	7.1
Cerebrovascular diseases	3	4.3
Intentional self-harm (suicide)	2	2.9
Anemias	2	2.9
Pneumonitis due to solids & liquids	1	1.4
Influenza & pneumonia	1	1.4
All other causes	14	20.0
Total	70	100.0

15-24 Years

Cause of Death*	Deaths	
	Number	Percent
Accidents (unintentional injuries)	205	46.0
Assault (homicide)	83	18.6
Intentional self-harm (suicide)	50	11.2
Malignant neoplasms	20	4.5
Diseases of heart	11	2.5
Birth defects ¹	6	1.3
Septicemia	3	0.7
Complications of medical & surgical care	2	0.4
Nephritis, nephrotic syndrome & nephrosis	2	0.4
Influenza & pneumonia	2	0.4
All other causes	62	13.9
Total	446	100.0

25-44 Years

Cause of Death*	Deaths	
	Number	Percent
Accidents (unintentional injuries)	458	23.2
Diseases of heart	270	13.7
Malignant neoplasms	266	13.5
Intentional self-harm (suicide)	161	8.2
Assault (homicide)	119	6.0
Human immunodeficiency virus (HIV) disease	99	5.0
Chronic liver disease & cirrhosis	46	2.3
Diabetes mellitus	42	2.1
Cerebrovascular diseases	33	1.7
Septicemia	24	1.2
All other causes	456	23.1
Total	1974	100.0

45-64 Years

Cause of Death*	Deaths	
	Number	Percent
Malignant neoplasms	2444	34.3
Diseases of heart	1675	23.5
Accidents (unintentional injuries)	352	4.9
Diabetes mellitus	211	3.0
Chronic lower respiratory diseases	199	2.8
Cerebrovascular diseases	199	2.8
Chronic liver disease & cirrhosis	193	2.7
Intentional self-harm (suicide)	183	2.6
Human immunodeficiency virus (HIV) disease	176	2.5
Septicemia	130	1.8
All other causes	1362	19.1
Total	7124	100.0

65+ Years

Cause of Death*	Deaths	
	Number	Percent
Diseases of heart	7567	28.7
Malignant neoplasms	6361	24.1
Chronic lower respiratory diseases	1722	6.5
Cerebrovascular diseases	1599	6.1
Alzheimer's disease	913	3.5
Diabetes mellitus	818	3.1
Nephritis, nephrotic syndrome & nephrosis	629	2.4
Influenza & pneumonia	599	2.3
Accidents (unintentional injuries)	489	1.9
Septicemia	449	1.7
All other causes	5220	19.8
Total	26366	100.0

LCODAGE

Notes:

*Cause of death categories were derived using the NCHS list of 50 rankable causes of death as specified by NCHS. For specific codes, see Appendix E.

1. Birth defects refer to deaths due to congenital malformations, deformations, & chromosomal abnormalities.

Source:

Delaware Health Statistics Center

TABLE F-12
NUMBER OF DEATHS BY AGE FOR SELECTED LEADING CAUSES OF DEATH
DELAWARE, 2008
(ALL RACES, BOTH SEXES)

Cause of Death*	Age of Decedent													
	Total	< 1	1-4	5-9	10-14	15-19	20-24	25-34	35-44	45-54	55-64	65-74	75+	Unk
Diseases of the Heart (I00-I09, I11, I13, I20-I51)	1769	1	0	0	3	0	1	7	36	141	199	255	1126	0
Acute rheumatic fever and chronic rheumatic heart disease (I00-I09)	9	0	0	0	0	0	0	0	0	1	0	1	7	0
Hypertensive heart disease (I11)	68	0	0	0	0	0	1	2	2	17	6	11	29	0
Hypertensive heart and renal disease (I13)	6	0	0	0	0	0	0	0	0	2	0	0	4	0
Ischemic heart disease (I20-I25)	1229	0	0	0	0	0	0	2	24	85	157	182	779	0
All other forms of heart disease (I26-I51)	457	1	0	0	3	0	0	3	10	36	36	61	307	0
Malignant Neoplasms (C00-C97)	1903	1	1	2	2	2	3	6	36	170	334	516	830	0
Malignant neoplasms of lip, oral and pharynx (C00-C14)	26	0	0	0	0	0	0	0	0	3	7	9	7	0
Malignant neoplasms of digestive organs (C15-C26)	446	0	0	0	0	0	0	1	6	44	78	130	187	0
Malignant neoplasms of respiratory and intrathoracic organs (C30-C39)	593	0	0	0	0	0	0	0	7	58	111	186	231	0
Malignant neoplasms of breast (C50)	131	0	0	0	0	0	0	1	4	23	28	29	46	0
Malignant neoplasms of female genital organs, (C51-C58)	101	0	0	0	0	0	0	2	3	5	22	20	49	0
Malignant neoplasms of male genital organs, (C60-C63)	103	0	0	0	0	0	0	0	0	1	13	11	78	0
Malignant neoplasms of urinary tract (C64-C68)	84	0	0	0	0	0	0	0	0	5	15	20	44	0
Malignant neoplasms of meninges, brain, and other parts of central nervous system (C70-C72)	49	1	0	2	0	1	1	0	5	3	8	14	14	0
Malignant neoplasms of lymphoid, hematopoietic, and related tissues (C81-C96)	179	0	1	0	1	1	0	1	3	9	20	52	91	0
All other and unspecified malignant neoplasms (C40-C49, C69, C73-C80, C97)	191	0	0	0	1	0	2	1	8	19	32	45	83	0
Cerebrovascular Diseases (I60-I69)	363	1	0	1	0	0	0	1	7	18	38	43	254	0

TABLE F-12 (continued)
 (2008 - Delaware, All Races, Both Sexes)

	Age of Decedent													
	Total	< 1	1-4	5-9	10-14	15-19	20-24	25-34	35-44	45-54	55-64	65-74	75+	Unk
Chronic Lower Respiratory Diseases (J40-J47)	470	0	0	0	0	0	1	3	1	10	40	106	309	0
Accidents (unintentional injuries) (V01-X59, Y85-Y86)	351	2	5	4	0	13	27	58	55	64	24	21	78	0
Motor Vehicle Accidents (V02-V04, (V09.0,V09.2,V12-V14, V19.0-V19.2, V19.4-V19.6,V20-V79, V80.3-V80.5, V81.0-V81.1, V82.0-V82.1, V83-V86, V87.0-V87.8, V88.0-V88.8,V89.0,V89.2)	127	0	3	3	0	7	15	23	25	16	10	8	17	0
Nontransport Accidents (W00-X59, Y86)	218	2	2	1	0	5	12	34	29	47	13	12	61	0
Diabetes Mellitus (E10-E14)	217	0	0	0	1	0	0	4	10	16	29	45	112	0
Influenza and pneumonia (J10-J18)	136	1	0	0	0	0	1	2	6	7	7	13	99	0
Alzheimer's Disease (G30)	203	0	0	0	0	0	0	0	0	0	2	14	187	0
Nephritis, Nephrotic Syndrome, and Nephrosis (N00-N07, N17-N19, N25-N27)	187	1	0	0	0	1	0	0	4	9	16	26	130	0
Septicemia (A40-A41)	138	1	0	0	0	1	0	1	3	14	24	30	64	0
Intentional self-harm (suicide) (X60-X84, Y87.0)	108	0	0	0	0	2	10	18	16	33	13	10	6	0
Chronic liver disease and Cirrhosis (K70, K73-K74)	91	0	0	0	0	0	0	1	7	28	25	16	14	0
Essential (primary) hypertension and hypertensive renal disease (I10, I12)	51	0	0	0	0	0	0	0	1	6	7	9	28	0
Aortic aneurysm and dissection (I71)	34	0	0	0	0	0	0	0	0	2	4	10	18	0
Assault (homicide) (X85-Y09, Y87.1)	66	0	0	0	1	10	9	27	9	6	4	0	0	0
Human immunodeficiency virus (HIV) (B20-B24)	58	0	0	0	0	0	0	2	15	27	12	1	1	0
Certain conditions originating in the perinatal period (P00-P96)	54	54	0	0	0	0	0	0	0	0	0	0	0	0
Congenital malformations, deformations, and chromosomal abnormalities (Q00-Q99)	25	14	1	0	0	1	1	1	1	0	2	2	2	0
All Other Causes	1378	25	2	0	0	2	6	22	40	93	128	159	901	0
TOTAL	7602	101	9	7	7	32	59	153	247	644	908	1276	4159	0

Note:
 *ICD Codes, Tenth Revision.

LCDAGEDE

Source:
 Delaware Health Statistics Center

TABLE F-13
NUMBER OF DEATHS BY AGE FOR SELECTED LEADING CAUSES OF DEATH
KENT, 2008
(ALL RACES, BOTH SEXES)

Cause of Death*	Age of Decedent													
	Total	< 1	1-4	5-9	10-14	15-19	20-24	25-34	35-44	45-54	55-64	65-74	75+	Unk
Diseases of the Heart (I00-I09, I11, I13, I20-I51)	342	0	0	0	2	0	0	0	9	31	33	57	210	0
Acute rheumatic fever and chronic rheumatic heart disease (I00-I09)	1	0	0	0	0	0	0	0	0	0	0	0	1	0
Hypertensive heart disease (I11)	12	0	0	0	0	0	0	0	1	2	0	3	6	0
Hypertensive heart and renal disease (I13)	2	0	0	0	0	0	0	0	0	0	0	0	2	0
Ischemic heart disease (I20-I25)	256	0	0	0	0	0	0	0	7	20	29	40	160	0
All other forms of heart disease (I26-I51)	71	0	0	0	2	0	0	0	1	9	4	14	41	0
Malignant Neoplasms (C00-C97)	347	1	1	0	1	0	0	2	5	34	64	95	144	0
Malignant neoplasms of lip, oral and pharynx (C00-C14)	2	0	0	0	0	0	0	0	0	0	0	1	1	0
Malignant neoplasms of digestive organs (C15-C26)	76	0	0	0	0	0	0	1	1	9	19	23	23	0
Malignant neoplasms of respiratory and intrathoracic organs (C30-C39)	107	0	0	0	0	0	0	0	1	9	21	34	42	0
Malignant neoplasms of breast (C50)	28	0	0	0	0	0	0	1	0	3	6	6	12	0
Malignant neoplasms of female genital organs, (C51-C58)	20	0	0	0	0	0	0	0	0	0	3	6	11	0
Malignant neoplasms of male genital organs, (C60-C63)	22	0	0	0	0	0	0	0	0	0	3	5	14	0
Malignant neoplasms of urinary tract (C64-C68)	14	0	0	0	0	0	0	0	0	1	4	3	6	0
Malignant neoplasms of meninges, brain, and other parts of central nervous system (C70-C72)	8	1	0	0	0	0	0	0	1	2	0	3	1	0
Malignant neoplasms of lymphoid, hematopoietic, and related tissues (C81-C96)	33	0	1	0	1	0	0	0	1	4	2	7	17	0
All other and unspecified malignant neoplasms (C40-C49, C69, C73-C80,C97)	37	0	0	0	0	0	0	0	1	6	6	7	17	0
Cerebrovascular Diseases (I60-I69)	51	0	0	1	0	0	0	0	0	2	8	4	36	0

TABLE F-13 (continued)
(2008 - Kent, All Races, Both Sexes)

	Age of Decedent													Unk
	Total	< 1	1-4	5-9	10-14	15-19	20-24	25-34	35-44	45-54	55-64	65-74	75+	
Chronic Lower Respiratory Diseases (J40-J47)	111	0	0	0	0	0	1	1	0	3	9	23	74	0
Accidents (unintentional injuries) (V01-X59, Y85-Y86)	32	0	0	0	0	0	0	0	1	4	5	8	14	0
Motor Vehicle Accidents (V02-V04, (V09.0,V09.2,V12-V14, V19.0-V19.2, V19.4-V19.6,V20-V79, V80.3-V80.5, V81.0-V81.1, V82.0-V82.1, V83-V86, V87.0-V87.8, V88.0-V88.8,V89.0,V89.2)	26	0	0	3	0	2	2	7	5	1	1	2	3	0
Nontransport Accidents (W00-X59, Y86)	30	1	0	0	0	0	3	5	5	4	1	2	9	0
Diabetes Mellitus (E10-E14)	43	0	0	0	0	0	0	0	3	7	4	13	16	0
Influenza and pneumonia (J10-J18)	24	0	0	0	0	0	1	0	2	2	1	2	16	0
Alzheimer's Disease (G30)	31	0	0	0	0	0	0	0	0	0	0	1	30	0
Nephritis, Nephrotic Syndrome, and Nephrosis (N00-N07, N17-N19, N25-N27)	37	1	0	0	0	0	0	0	3	4	4	8	17	0
Septicemia (A40-A41)	32	0	0	0	0	0	0	0	1	4	5	8	14	0
Intentional self-harm (suicide) (X60-X84, Y87.0)	20	0	0	0	0	1	3	1	2	9	2	2	0	0
Chronic liver disease and Cirrhosis (K70, K73-K74)	14	0	0	0	0	0	0	0	2	5	1	4	2	0
Essential (primary) hypertension and hypertensive renal disease (I10, I12)	9	0	0	0	0	0	0	0	0	2	0	3	4	0
Aortic aneurysm and dissection (I71)	3	0	0	0	0	0	0	0	0	0	0	1	2	0
Assault (homicide) (X85-Y09, Y87.1)	10	0	0	0	0	1	2	5	0	0	2	0	0	0
Human immunodeficiency virus (HIV) (B20-B24)	8	0	0	0	0	0	0	1	3	3	1	0	0	0
Certain conditions originating in the perinatal period (P00-P96)	6	6	0	0	0	0	0	0	0	0	0	0	0	0
Congenital malformations, deformations, and chromosomal abnormalities (Q00-Q99)	7	5	1	0	0	0	0	0	0	0	0	0	1	0
All Other Causes	240	5	1	3	0	3	7	13	17	22	21	22	126	0
TOTAL	1367	18	3	4	3	5	14	23	48	132	160	251	706	0

LCDAGEKT

Note:
*ICD Codes, Tenth Revision.

Source:
Delaware Health Statistics Center

TABLE F-14
NUMBER OF DEATHS BY AGE FOR SELECTED LEADING CAUSES OF DEATH
NEW CASTLE, 2008
(ALL RACES, BOTH SEXES)

Cause of Death*	Age of Decedent													
	Total	< 1	1-4	5-9	10-14	15-19	20-24	25-34	35-44	45-54	55-64	65-74	75+	Unk
Diseases of the Heart (I00-I09, I11, I13, I20-I51)	923	1	0	0	0	0	1	6	19	77	112	116	591	0
Acute rheumatic fever and chronic rheumatic heart disease (I00-I09)	6	0	0	0	0	0	0	0	0	1	0	1	4	0
Hypertensive heart disease (I11)	42	0	0	0	0	0	1	1	0	12	5	6	17	0
Hypertensive heart and renal disease (I13)	4	0	0	0	0	0	0	0	0	2	0	0	2	0
Ischemic heart disease (I20-I25)	583	0	0	0	0	0	0	2	11	43	83	74	370	0
All other forms of heart disease (I26-I51)	288	1	0	0	0	0	0	3	8	19	24	35	198	0
Malignant Neoplasms (C00-C97)	1068	0	0	2	1	1	1	4	28	105	182	275	469	0
Malignant neoplasms of lip, oral and pharynx (C00-C14)	17	0	0	0	0	0	0	0	0	2	4	6	5	0
Malignant neoplasms of digestive organs (C15-C26)	260	0	0	0	0	0	0	0	5	29	39	74	113	0
Malignant neoplasms of respiratory and intrathoracic organs (C30-C39)	313	0	0	0	0	0	0	0	6	37	58	94	118	0
Malignant neoplasms of breast (C50)	80	0	0	0	0	0	0	0	4	15	15	18	28	0
Malignant neoplasms of female genital organs, (C51-C58)	50	0	0	0	0	0	0	2	2	4	14	7	21	0
Malignant neoplasms of male genital organs, (C60-C63)	65	0	0	0	0	0	0	0	0	0	9	4	52	0
Malignant neoplasms of urinary tract (C64-C68)	52	0	0	0	0	0	0	0	0	4	9	12	27	0
Malignant neoplasms of meninges, brain, and other parts of central nervous system (C70-C72)	32	0	0	2	0	1	0	0	4	1	5	9	10	0
Malignant neoplasms of lymphoid, hematopoietic, and related tissues (C81-C96)	97	0	0	0	0	0	0	1	1	4	11	30	50	0
All other and unspecified malignant neoplasms (C40-C49, C69, C73-C80,C97)	102	0	0	0	1	0	1	1	6	9	18	21	45	0
Cerebrovascular Diseases (I60-I69)	224	1	0	0	0	0	0	1	5	11	22	28	156	0

TABLE F-14 (continued)
 (2008 - New Castle, All Races, Both Sexes)

	Age of Decedent													
	Total	< 1	1-4	5-9	10-14	15-19	20-24	25-34	35-44	45-54	55-64	65-74	75+	Unk
Chronic Lower Respiratory Diseases (J40-J47)	242	0	0	0	0	0	0	2	1	5	18	55	161	0
Accidents (unintentional injuries) (V01-X59, Y85-Y86)	198	0	2	1	0	3	16	28	29	40	15	12	52	0
Motor Vehicle Accidents (V02-V04, (V09.0,V09.2,V12-V14, V19.0-V19.2, V19.4-V19.6,V20-V79, V80.3-V80.5, V81.0-V81.1, V82.0-V82.1, V83-V86, V87.0-V87.8, V88.0-V88.8,V89.0,V89.2)	59	0	1	0	0	0	9	7	11	8	6	5	12	0
Nontransport Accidents (W00-X59, Y86)	139	0	1	1	0	3	7	21	18	32	9	7	40	0
Diabetes Mellitus (E10-E14)	120	0	0	0	1	0	0	4	3	6	16	24	66	0
Influenza and pneumonia (J10-J18)	77	1	0	0	0	0	0	0	3	3	3	7	60	0
Alzheimer's Disease (G30)	87	0	0	0	0	0	0	0	0	0	2	8	77	0
Nephritis, Nephrotic Syndrome, and Nephrosis (N00-N07, N17-N19, N25-N27)	113	0	0	0	0	1	0	0	1	5	9	14	83	0
Septicemia (A40-A41)	77	1	0	0	0	0	0	1	2	7	16	15	35	0
Intentional self-harm (suicide) (X60-X84, Y87.0)	61	0	0	0	0	1	5	11	10	17	9	4	4	0
Chronic liver disease and Cirrhosis (K70, K73-K74)	49	0	0	0	0	0	0	0	4	20	13	5	7	0
Essential (primary) hypertension and hypertensive renal disease (I10, I12)	30	0	0	0	0	0	0	0	0	4	6	3	17	0
Aortic aneurysm and dissection (I71)	20	0	0	0	0	0	0	0	0	1	3	7	9	0
Assault (homicide) (X85-Y09, Y87.1)	48	0	0	0	1	8	5	21	8	4	1	0	0	0
Human immunodeficiency virus (HIV) (B20-B24)	42	0	0	0	0	0	0	1	8	21	10	1	1	0
Certain conditions originating in the perinatal period (P00-P96)	42	42	0	0	0	0	0	0	0	0	0	0	0	0
Congenital malformations, deformations, and chromosomal abnormalities (Q00-Q99)	14	7	0	0	0	1	1	1	1	0	1	1	1	0
All Other Causes	855	17	1	0	0	2	3	15	21	57	68	91	580	0
TOTAL	4290	70	3	3	3	17	32	95	143	383	506	666	2369	0

Note:

*ICD Codes, Tenth Revision.

LCDAGENC

Source:

Delaware Health Statistics Center

TABLE F-15
NUMBER OF DEATHS BY AGE FOR SELECTED LEADING CAUSES OF DEATH
CITY OF WILMINGTON, 2008
(ALL RACES, BOTH SEXES)

Cause of Death*	Age of Decedent													
	Total	< 1	1-4	5-9	10-14	15-19	20-24	25-34	35-44	45-54	55-64	65-74	75+	Unk
Diseases of the Heart (I00-I09, I11, I13, I20-I51)	152	1	0	0	0	0	0	0	6	17	20	25	83	0
Acute rheumatic fever and chronic rheumatic heart disease (I00-I09)	0	0	0	0	0	0	0	0	0	0	0	0	0	0
Hypertensive heart disease (I11)	7	0	0	0	0	0	0	0	0	3	1	1	2	0
Hypertensive heart and renal disease (I13)	2	0	0	0	0	0	0	0	0	1	0	0	1	0
Ischemic heart disease (I20-I25)	100	0	0	0	0	0	0	0	4	9	14	17	56	0
All other forms of heart disease (I26-I51)	43	1	0	0	0	0	0	0	2	4	5	7	24	0
Malignant Neoplasms (C00-C97)	147	0	0	0	0	0	0	1	7	23	19	31	66	0
Malignant neoplasms of lip, oral and pharynx (C00-C14)	1	0	0	0	0	0	0	0	0	0	0	0	1	0
Malignant neoplasms of digestive organs (C15-C26)	40	0	0	0	0	0	0	0	2	8	4	8	18	0
Malignant neoplasms of respiratory and intrathoracic organs (C30-C39)	43	0	0	0	0	0	0	0	1	10	6	11	15	0
Malignant neoplasms of breast (C50)	12	0	0	0	0	0	0	0	1	1	2	2	6	0
Malignant neoplasms of female genital organs, (C51-C58)	6	0	0	0	0	0	0	1	0	1	1	0	3	0
Malignant neoplasms of male genital organs, (C60-C63)	9	0	0	0	0	0	0	0	0	0	1	1	7	0
Malignant neoplasms of urinary tract (C64-C68)	7	0	0	0	0	0	0	0	0	1	1	2	3	0
Malignant neoplasms of meninges, brain, and other parts of central nervous system (C70-C72)	1	0	0	0	0	0	0	0	1	0	0	0	0	0
Malignant neoplasms of lymphoid, hematopoietic, and related tissues (C81-C96)	18	0	0	0	0	0	0	0	0	0	3	6	9	0
All other and unspecified malignant neoplasms (C40-C49, C69, C73-C80,C97)	10	0	0	0	0	0	0	0	2	2	1	1	4	0
Cerebrovascular Diseases (I60-I69)	45	1	0	0	0	0	0	0	2	3	7	4	28	0

TABLE F-15 (continued)
(2008 - City of Wilmington, All Races, Both Sexes)

	Age of Decedent													
	Total	< 1	1-4	5-9	10-14	15-19	20-24	25-34	35-44	45-54	55-64	65-74	75+	Unk
Chronic Lower Respiratory Diseases (J40-J47)	32	0	0	0	0	0	0	0	0	1	4	7	20	0
Accidents (unintentional injuries) (V01-X59, Y85-Y86)	36	0	0	1	0	2	2	3	6	7	3	1	11	0
Motor Vehicle Accidents (V02-V04, (V09.0,V09.2,V12-V14, V19.0-V19.2, V19.4-V19.6,V20-V79, V80.3-V80.5, V81.0-V81.1, V82.0-V82.1, V83-V86, V87.0-V87.8, V88.0-V88.8,V89.0,V89.2)	6	0	0	0	0	0	1	0	2	0	2	0	1	0
Nontransport Accidents (W00-X59, Y86)	30	0	0	1	0	2	1	3	4	7	1	1	10	0
Diabetes Mellitus (E10-E14)	32	0	0	0	1	0	0	3	1	3	1	5	18	0
Influenza and pneumonia (J10-J18)	9	0	0	0	0	0	0	0	0	0	1	0	8	0
Alzheimer's Disease (G30)	7	0	0	0	0	0	0	0	0	0	1	1	5	0
Nephritis, Nephrotic Syndrome, and Nephrosis (N00-N07, N17-N19, N25-N27)	25	0	0	0	0	0	0	0	1	4	3	3	14	0
Septicemia (A40-A41)	9	0	0	0	0	0	0	1	0	0	3	1	4	0
Intentional self-harm (suicide) (X60-X84, Y87.0)	4	0	0	0	0	0	0	1	1	0	0	1	1	0
Chronic liver disease and Cirrhosis (K70, K73-K74)	14	0	0	0	0	0	0	0	1	4	5	2	2	0
Essential (primary) hypertension and hypertensive renal disease (I10, I12)	9	0	0	0	0	0	0	0	0	3	3	2	1	0
Aortic aneurysm and dissection (I71)	3	0	0	0	0	0	0	0	0	0	2	0	1	0
Assault (homicide) (X85-Y09, Y87.1)	22	0	0	0	0	2	4	10	4	2	0	0	0	0
Human immunodeficiency virus (HIV) (B20-B24)	29	0	0	0	0	0	0	0	8	12	8	1	0	0
Certain conditions originating in the perinatal period (P00-P96)	8	8	0	0	0	0	0	0	0	0	0	0	0	0
Congenital malformations, deformations, and chromosomal abnormalities (Q00-Q99)	2	1	0	0	0	1	0	0	0	0	0	0	0	0
All Other Causes	141	8	0	0	0	1	0	8	1	11	13	12	87	0
TOTAL	726	19	0	1	1	6	6	27	38	90	93	96	349	0

Note:

*ICD Codes, Tenth Revision.

LCDAGEWLM

Source:

Delaware Health Statistics Center

TABLE F-16
NUMBER OF DEATHS BY AGE FOR SELECTED LEADING CAUSES OF DEATH
SUSSEX, 2008
(ALL RACES, BOTH SEXES)

Cause of Death*	Age of Decedent													
	Total	< 1	1-4	5-9	10-14	15-19	20-24	25-34	35-44	45-54	55-64	65-74	75+	Unk
Diseases of the Heart (I00-I09, I11, I13, I20-I51)	504	0	0	0	1	0	0	1	8	33	54	82	325	0
Acute rheumatic fever and chronic rheumatic heart disease (I00-I09)	2	0	0	0	0	0	0	0	0	0	0	0	2	0
Hypertensive heart disease (I11)	14	0	0	0	0	0	0	1	1	3	1	2	6	0
Hypertensive heart and renal disease (I13)	0	0	0	0	0	0	0	0	0	0	0	0	0	0
Ischemic heart disease (I20-I25)	390	0	0	0	0	0	0	0	6	22	45	68	249	0
All other forms of heart disease (I26-I51)	98	0	0	0	1	0	0	0	1	8	8	12	68	0
Malignant Neoplasms (C00-C97)	488	0	0	0	0	1	2	0	3	31	88	146	217	0
Malignant neoplasms of lip, oral and pharynx (C00-C14)	7	0	0	0	0	0	0	0	0	1	3	2	1	0
Malignant neoplasms of digestive organs (C15-C26)	110	0	0	0	0	0	0	0	0	6	20	33	51	0
Malignant neoplasms of respiratory and intrathoracic organs (C30-C39)	173	0	0	0	0	0	0	0	0	12	32	58	71	0
Malignant neoplasms of breast (C50)	23	0	0	0	0	0	0	0	0	5	7	5	6	0
Malignant neoplasms of female genital organs, (C51-C58)	31	0	0	0	0	0	0	0	1	1	5	7	17	0
Malignant neoplasms of male genital organs, (C60-C63)	16	0	0	0	0	0	0	0	0	1	1	2	12	0
Malignant neoplasms of urinary tract (C64-C68)	18	0	0	0	0	0	0	0	0	0	2	5	11	0
Malignant neoplasms of meninges, brain, and other parts of central nervous system (C70-C72)	9	0	0	0	0	0	1	0	0	0	3	2	3	0
Malignant neoplasms of lymphoid, hematopoietic, and related tissues (C81-C96)	49	0	0	0	0	1	0	0	1	1	7	15	24	0
All other and unspecified malignant neoplasms (C40-C49, C69, C73-C80,C97)	52	0	0	0	0	0	1	0	1	4	8	17	21	0
Cerebrovascular Diseases (I60-I69)	88	0	0	0	0	0	0	0	2	5	8	11	62	0

TABLE F-16 (continued)
(2008 - Sussex, All Races, Both Sexes)

	Age of Decedent													
	Total	< 1	1-4	5-9	10-14	15-19	20-24	25-34	35-44	45-54	55-64	65-74	75+	Unk
Chronic Lower Respiratory Diseases (J40-J47)	117	0	0	0	0	0	0	0	0	2	13	28	74	0
Accidents (unintentional injuries) (V01-X59, Y85-Y86)	94	1	3	0	0	7	6	18	16	18	7	4	14	0
Motor Vehicle Accidents (V02-V04, (V09.0,V09.2,V12-V14, V19.0-V19.2, V19.4-V19.6,V20-V79, V80.3-V80.5, V81.0-V81.1, V82.0-V82.1, V83-V86, V87.0-V87.8, V88.0-V88.8,V89.0,V89.2)	42	0	2	0	0	5	4	9	9	7	3	1	2	0
Nontransport Accidents (W00-X59, Y86)	49	1	1	0	0	2	2	8	6	11	3	3	12	0
Diabetes Mellitus (E10-E14)	54	0	0	0	0	0	0	0	4	3	9	8	30	0
Influenza and pneumonia (J10-J18)	35	0	0	0	0	0	0	2	1	2	3	4	23	0
Alzheimer's Disease (G30)	85	0	0	0	0	0	0	0	0	0	0	5	80	0
Nephritis, Nephrotic Syndrome, and Nephrosis (N00-N07, N17-N19, N25-N27)	37	0	0	0	0	0	0	0	0	0	3	4	30	0
Septicemia (A40-A41)	29	0	0	0	0	1	0	0	0	3	3	7	15	0
Intentional self-harm (suicide) (X60-X84, Y87.0)	27	0	0	0	0	0	2	6	4	7	2	4	2	0
Chronic liver disease and Cirrhosis (K70, K73-K74)	28	0	0	0	0	0	0	1	1	3	11	7	5	0
Essential (primary) hypertension and hypertensive renal disease (I10, I12)	12	0	0	0	0	0	0	0	1	0	1	3	7	0
Aortic aneurysm and dissection (I71)	11	0	0	0	0	0	0	0	0	1	1	2	7	0
Assault (homicide) (X85-Y09, Y87.1)	8	0	0	0	0	1	2	1	1	2	1	0	0	0
Human immunodeficiency virus (HIV) (B20-B24)	8	0	0	0	0	0	0	0	4	3	1	0	0	0
Certain conditions originating in the perinatal period (P00-P96)	6	6	0	0	0	0	0	0	0	0	0	0	0	0
Congenital malformations, deformations, and chromosomal abnormalities (Q00-Q99)	4	2	0	0	0	0	0	0	0	0	1	1	0	0
All Other Causes	310	4	0	0	0	0	1	6	11	16	36	43	193	0
TOTAL	1945	13	3	0	1	10	13	35	56	129	242	359	1084	0

Note:

*ICD Codes, Tenth Revision.

LCDAGESX

Source:

Delaware Health Statistics Center

TABLE F-17
NUMBER OF DEATHS BY AGE FOR SELECTED LEADING CAUSES OF DEATH
DELAWARE, 2008
(ALL RACES, MALES)

Cause of Death*	Age of Decedent													
	Total	< 1	1-4	5-9	10-14	15-19	20-24	25-34	35-44	45-54	55-64	65-74	75+	Unk
Diseases of the Heart (I00-I09, I11, I13, I20-I51)	911	0	0	0	1	0	0	5	24	89	128	155	509	0
Acute rheumatic fever and chronic rheumatic heart disease (I00-I09)	3	0	0	0	0	0	0	0	0	0	0	1	2	0
Hypertensive heart disease (I11)	37	0	0	0	0	0	0	2	2	10	4	8	11	0
Hypertensive heart and renal disease (I13)	4	0	0	0	0	0	0	0	0	2	0	0	2	0
Ischemic heart disease (I20-I25)	650	0	0	0	0	0	0	1	16	60	104	111	358	0
All other forms of heart disease (I26-I51)	217	0	0	0	1	0	0	2	6	17	20	35	136	0
Malignant Neoplasms (C00-C97)	983	1	1	1	0	0	0	1	14	92	179	274	420	0
Malignant neoplasms of lip, oral and pharynx (C00-C14)	21	0	0	0	0	0	0	0	0	3	6	6	6	0
Malignant neoplasms of digestive organs (C15-C26)	259	0	0	0	0	0	0	0	3	35	53	78	90	0
Malignant neoplasms of respiratory and intrathoracic organs (C30-C39)	315	0	0	0	0	0	0	0	4	31	60	100	120	0
Malignant neoplasms of breast (C50)	2	0	0	0	0	0	0	0	0	1	0	1	0	0
Malignant neoplasms of male genital organs, (C60-C63)	103	0	0	0	0	0	0	0	0	1	13	11	78	0
Malignant neoplasms of urinary tract (C64-C68)	58	0	0	0	0	0	0	0	0	4	12	9	33	0
Malignant neoplasms of meninges, brain, and other parts of central nervous system (C70-C72)	24	1	0	1	0	0	0	0	3	1	3	9	6	0
Malignant neoplasms of lymphoid, hematopoietic, and related tissues (C81-C96)	98	0	1	0	0	0	0	0	2	5	10	34	46	0
All other and unspecified malignant neoplasms (C40-C49, C69, C73-C80, C97)	103	0	0	0	0	0	0	1	2	11	22	26	41	0
Cerebrovascular Diseases (I60-I69)	146	1	0	1	0	0	0	1	3	9	21	20	90	0

TABLE F-17 (continued)
(2008 - All Races, Male)

	Age of Decedent													
	Total	< 1	1-4	5-9	10-14	15-19	20-24	25-34	35-44	45-54	55-64	65-74	75+	Unk
Chronic Lower Respiratory Diseases (J40-J47)	229	0	0	0	0	0	1	2	1	4	27	52	142	0
Accidents (unintentional injuries) (V01-X59, Y85-Y86)	223	2	3	3	0	9	19	41	42	41	17	12	34	0
Motor Vehicle Accidents (V02-V04, (V09.0,V09.2,V12-V14, V19.0-V19.2, V19.4-V19.6,V20-V79, V80.3-V80.5, V81.0-V81.1, V82.0-V82.1, V83-V86, V87.0-V87.8, V88.0-V88.8,V89.0,V89.2)	87	0	2	2	0	5	13	14	20	11	9	3	8	0
Nontransport Accidents (W00-X59, Y86)	130	2	1	1	0	3	6	26	21	29	7	8	26	0
Diabetes Mellitus (E10-E14)	113	0	0	0	0	0	0	4	6	7	21	29	46	0
Influenza and pneumonia (J10-J18)	61	1	0	0	0	0	1	1	4	3	2	8	41	0
Alzheimer's Disease (G30)	54	0	0	0	0	0	0	0	0	0	1	5	48	0
Nephritis, Nephrotic Syndrome, and Nephrosis (N00-N07, N17-N19, N25-N27)	86	1	0	0	0	1	0	0	3	5	11	14	51	0
Septicemia (A40-A41)	61	1	0	0	0	0	0	1	2	4	13	14	26	0
Intentional self-harm (suicide) (X60-X84, Y87.0)	87	0	0	0	0	2	9	15	12	25	10	9	5	0
Chronic liver disease and Cirrhosis (K70, K73-K74)	64	0	0	0	0	0	0	1	5	25	14	11	8	0
Essential (primary) hypertension and hypertensive renal disease (I10, I12)	23	0	0	0	0	0	0	0	1	6	5	3	8	0
Aortic aneurysm and dissection (I71)	20	0	0	0	0	0	0	0	0	2	3	7	8	0
Assault (homicide) (X85-Y09, Y87.1)	58	0	0	0	0	9	8	24	8	6	3	0	0	0
Human immunodeficiency virus (HIV) (B20-B24)	27	0	0	0	0	0	0	0	7	14	4	1	1	0
Certain conditions originating in the perinatal period (P00-P96)	28	28	0	0	0	0	0	0	0	0	0	0	0	0
Congenital malformations, deformations, and chromosomal abnormalities (Q00-Q99)	13	7	0	0	0	1	0	1	1	0	1	2	0	0
All Other Causes	565	16	1	0	0	0	3	12	19	52	65	83	314	0
TOTAL	3752	58	5	5	1	22	41	109	152	384	525	699	1751	0

Note:
*ICD Codes, Tenth Revision.

LCDAGMAL

Source:
Delaware Health Statistics Center

TABLE F-18
NUMBER OF DEATHS BY AGE FOR SELECTED LEADING CAUSES OF DEATH
DELAWARE, 2008
(ALL RACES, FEMALES)

Cause of Death*	Age of Decedent													
	Total	< 1	1-4	5-9	10-14	15-19	20-24	25-34	35-44	45-54	55-64	65-74	75+	Unk
Diseases of the Heart (I00-I09, I11, I13, I20-I51)	858	1	0	0	2	0	1	2	12	52	71	100	617	0
Acute rheumatic fever and chronic rheumatic heart disease (I00-I09)	6	0	0	0	0	0	0	0	0	1	0	0	5	0
Hypertensive heart disease (I11)	31	0	0	0	0	0	1	0	0	7	2	3	18	0
Hypertensive heart and renal disease (I13)	2	0	0	0	0	0	0	0	0	0	0	0	2	0
Ischemic heart disease (I20-I25)	579	0	0	0	0	0	0	1	8	25	53	71	421	0
All other forms of heart disease (I26-I51)	240	1	0	0	2	0	0	1	4	19	16	26	171	0
Malignant Neoplasms (C00-C97)	920	0	0	1	2	2	3	5	22	78	155	242	410	0
Malignant neoplasms of lip, oral and pharynx (C00-C14)	5	0	0	0	0	0	0	0	0	0	1	3	1	0
Malignant neoplasms of digestive organs (C15-C26)	187	0	0	0	0	0	0	1	3	9	25	52	97	0
Malignant neoplasms of respiratory and intrathoracic organs (C30-C39)	278	0	0	0	0	0	0	0	3	27	51	86	111	0
Malignant neoplasms of breast (C50)	129	0	0	0	0	0	0	1	4	22	28	28	46	0
Malignant neoplasms of female genital organs, (C51-C58)	101	0	0	0	0	0	0	2	3	5	22	20	49	0
Malignant neoplasms of urinary tract (C64-C68)	26	0	0	0	0	0	0	0	0	1	3	11	11	0
Malignant neoplasms of meninges, brain, and other parts of central nervous system (C70-C72)	25	0	0	1	0	1	1	0	2	2	5	5	8	0
Malignant neoplasms of lymphoid, hematopoietic, and related tissues (C81-C96)	81	0	0	0	1	1	0	1	1	4	10	18	45	0
All other and unspecified malignant neoplasms (C40-C49, C69, C73-C80,C97)	88	0	0	0	1	0	2	0	6	8	10	19	42	0
Cerebrovascular Diseases (I60-I69)	217	0	0	0	0	0	0	0	4	9	17	23	164	0

TABLE F-18 (continued)
(2008 - All Races, Female)

	Age of Decedent													
	Total	< 1	1-4	5-9	10-14	15-19	20-24	25-34	35-44	45-54	55-64	65-74	75+	Unk
Chronic Lower Respiratory Diseases (J40-J47)	241	0	0	0	0	0	0	1	0	6	13	54	167	0
Accidents (unintentional injuries) (V01-X59, Y85-Y86)	128	0	2	1	0	4	8	17	13	23	7	9	44	0
Motor Vehicle Accidents (V02-V04, (V09.0,V09.2,V12-V14, V19.0-V19.2, V19.4-V19.6,V20-V79, V80.3-V80.5, V81.0-V81.1, V82.0-V82.1, V83-V86, V87.0-V87.8, V88.0-V88.8,V89.0,V89.2)	40	0	1	1	0	2	2	9	5	5	1	5	9	0
Nontransport Accidents (W00-X59, Y86)	88	0	1	0	0	2	6	8	8	18	6	4	35	0
Diabetes Mellitus (E10-E14)	104	0	0	0	1	0	0	0	4	9	8	16	66	0
Influenza and pneumonia (J10-J18)	75	0	0	0	0	0	0	1	2	4	5	5	58	0
Alzheimer's Disease (G30)	149	0	0	0	0	0	0	0	0	0	1	9	139	0
Nephritis, Nephrotic Syndrome, and Nephrosis (N00-N07, N17-N19, N25-N27)	101	0	0	0	0	0	0	0	1	4	5	12	79	0
Septicemia (A40-A41)	77	0	0	0	0	1	0	0	1	10	11	16	38	0
Intentional self-harm (suicide) (X60-X84, Y87.0)	21	0	0	0	0	0	1	3	4	8	3	1	1	0
Chronic liver disease and Cirrhosis (K70, K73-K74)	27	0	0	0	0	0	0	0	2	3	11	5	6	0
Essential (primary) hypertension and hypertensive renal disease (I10, I12)	28	0	0	0	0	0	0	0	0	0	2	6	20	0
Aortic aneurysm and dissection (I71)	14	0	0	0	0	0	0	0	0	0	1	3	10	0
Assault (homicide) (X85-Y09, Y87.1)	8	0	0	0	1	1	1	3	1	0	1	0	0	0
Human immunodeficiency virus (HIV) (B20-B24)	31	0	0	0	0	0	0	2	8	13	8	0	0	0
Certain conditions originating in the perinatal period (P00-P96)	26	26	0	0	0	0	0	0	0	0	0	0	0	0
Congenital malformations, deformations, and chromosomal abnormalities (Q00-Q99)	12	7	1	0	0	0	1	0	0	0	1	0	2	0
All Other Causes	813	9	1	0	0	2	3	10	21	41	63	76	587	0
TOTAL	3850	43	4	2	6	10	18	44	95	260	383	577	2408	0

Note:

*ICD Codes, Tenth Revision.

Source:

Delaware Health Statistics Center

LCDAGFEM

TABLE F-19
NUMBER OF DEATHS BY AGE FOR SELECTED LEADING CAUSES OF DEATH
DELAWARE, 2008
(WHITE, BOTH SEXES)

Cause of Death*	Age of Decedent													
	Total	< 1	1-4	5-9	10-14	15-19	20-24	25-34	35-44	45-54	55-64	65-74	75+	Unk
Diseases of the Heart (I00-I09, I11, I13, I20-I51)	1503	1	0	0	2	0	1	6	21	96	160	208	1008	0
Acute rheumatic fever and chronic rheumatic heart disease (I00-I09)	7	0	0	0	0	0	0	0	0	0	0	0	7	0
Hypertensive heart disease (I11)	50	0	0	0	0	0	1	2	1	10	3	8	25	0
Hypertensive heart and renal disease (I13)	1	0	0	0	0	0	0	0	0	0	0	0	1	0
Ischemic heart disease (I20-I25)	1059	0	0	0	0	0	0	2	16	62	134	149	696	0
All other forms of heart disease (I26-I51)	386	1	0	0	2	0	0	2	4	24	23	51	279	0
Malignant Neoplasms (C00-C97)	1601	1	1	1	2	1	2	5	26	125	273	424	740	0
Malignant neoplasms of lip, oral and pharynx (C00-C14)	24	0	0	0	0	0	0	0	0	3	6	9	6	0
Malignant neoplasms of digestive organs (C15-C26)	369	0	0	0	0	0	0	1	4	28	62	106	168	0
Malignant neoplasms of respiratory and intrathoracic organs (C30-C39)	513	0	0	0	0	0	0	0	5	48	90	157	213	0
Malignant neoplasms of breast (C50)	104	0	0	0	0	0	0	1	1	17	24	24	37	0
Malignant neoplasms of female genital organs, (C51-C58)	84	0	0	0	0	0	0	1	3	4	18	17	41	0
Malignant neoplasms of male genital organs, (C60-C63)	83	0	0	0	0	0	0	0	0	0	9	7	67	0
Malignant neoplasms of urinary tract (C64-C68)	69	0	0	0	0	0	0	0	0	2	12	15	40	0
Malignant neoplasms of meninges, brain, and other parts of central nervous system (C70-C72)	39	1	0	1	0	0	1	0	4	2	8	11	11	0
Malignant neoplasms of lymphoid, hematopoietic, and related tissues (C81-C96)	151	0	1	0	1	1	0	1	3	8	15	39	82	0
All other and unspecified malignant neoplasms (C40-C49, C69, C73-C80,C97)	165	0	0	0	1	0	1	1	6	13	29	39	75	0
Cerebrovascular Diseases (I60-I69)	296	1	0	0	0	0	0	1	6	12	20	32	224	0

TABLE F-19 (continued)
(2008 - White, Both Sexes)

	Age of Decedent													
	Total	< 1	1-4	5-9	10-14	15-19	20-24	25-34	35-44	45-54	55-64	65-74	75+	Unk
Chronic Lower Respiratory Diseases (J40-J47)	417	0	0	0	0	0	1	2	1	7	33	94	279	0
Accidents (unintentional injuries) (V01-X59, Y85-Y86)	302	0	3	3	0	8	24	46	47	58	19	19	75	0
Motor Vehicle Accidents (V02-V04, (V09.0,V09.2,V12-V14, V19.0-V19.2, V19.4-V19.6,V20-V79, V80.3-V80.5, V81.0-V81.1, V82.0-V82.1, V83-V86, V87.0-V87.8, V88.0-V88.8,V89.0,V89.2)	105	0	2	3	0	6	12	18	18	14	7	8	17	0
Nontransport Accidents (W00-X59, Y86)	194	0	1	0	0	2	12	28	28	43	12	10	58	0
Diabetes Mellitus (E10-E14)	165	0	0	0	1	0	0	0	5	8	25	37	89	0
Influenza and pneumonia (J10-J18)	117	0	0	0	0	0	1	1	6	6	5	11	87	0
Alzheimer's Disease (G30)	186	0	0	0	0	0	0	0	0	0	1	12	173	0
Nephritis, Nephrotic Syndrome, and Nephrosis (N00-N07, N17-N19, N25-N27)	138	0	0	0	0	0	0	0	1	4	11	17	105	0
Septicemia (A40-A41)	111	1	0	0	0	1	0	0	2	8	17	25	57	0
Intentional self-harm (suicide) (X60-X84, Y87.0)	93	0	0	0	0	2	8	17	13	27	12	8	6	0
Chronic liver disease and Cirrhosis (K70, K73-K74)	75	0	0	0	0	0	0	0	7	23	19	14	12	0
Essential (primary) hypertension and hypertensive renal disease (I10, I12)	29	0	0	0	0	0	0	0	1	1	3	2	22	0
Aortic aneurysm and dissection (I71)	30	0	0	0	0	0	0	0	0	2	2	9	17	0
Assault (homicide) (X85-Y09, Y87.1)	23	0	0	0	1	2	1	9	3	3	4	0	0	0
Human immunodeficiency virus (HIV) (B20-B24)	17	0	0	0	0	0	0	0	4	10	2	1	0	0
Certain conditions originating in the perinatal period (P00-P96)	25	25	0	0	0	0	0	0	0	0	0	0	0	0
Congenital malformations, deformations, and chromosomal abnormalities (Q00-Q99)	16	7	1	0	0	0	0	1	1	0	2	2	2	0
All Other Causes	1165	13	1	0	0	2	5	13	28	69	101	134	799	0
TOTAL	6309	49	6	4	6	16	43	101	172	459	709	1049	3695	0

Note:

*ICD Codes, Tenth Revision.

Source:

Delaware Health Statistics Center

LCDAGWHT

TABLE F-20
NUMBER OF DEATHS BY AGE FOR SELECTED LEADING CAUSES OF DEATH
DELAWARE, 2008
(WHITE MALES)

Cause of Death*	Age of Decedent													
	Total	< 1	1-4	5-9	10-14	15-19	20-24	25-34	35-44	45-54	55-64	65-74	75+	Unk
Diseases of the Heart (I00-I09, I11, I13, I20-I51)	780	0	0	0	1	0	0	4	17	63	107	127	461	0
Acute rheumatic fever and chronic rheumatic heart disease (I00-I09)	2	0	0	0	0	0	0	0	0	0	0	0	2	0
Hypertensive heart disease (I11)	26	0	0	0	0	0	0	2	1	8	2	5	8	0
Hypertensive heart and renal disease (I13)	1	0	0	0	0	0	0	0	0	0	0	0	1	0
Ischemic heart disease (I20-I25)	564	0	0	0	0	0	0	1	12	45	92	92	322	0
All other forms of heart disease (I26-I51)	187	0	0	0	1	0	0	1	4	10	13	30	128	0
Malignant Neoplasms (C00-C97)	837	1	1	0	0	0	0	1	12	69	148	218	387	0
Malignant neoplasms of lip, oral and pharynx (C00-C14)	19	0	0	0	0	0	0	0	0	3	5	6	5	0
Malignant neoplasms of digestive organs (C15-C26)	219	0	0	0	0	0	0	0	3	24	44	61	87	0
Malignant neoplasms of respiratory and intrathoracic organs (C30-C39)	272	0	0	0	0	0	0	0	3	26	47	83	113	0
Malignant neoplasms of breast (C50)	1	0	0	0	0	0	0	0	0	1	0	0	0	0
Malignant neoplasms of male genital organs, (C60-C63)	83	0	0	0	0	0	0	0	0	0	9	7	67	0
Malignant neoplasms of urinary tract (C64-C68)	52	0	0	0	0	0	0	0	0	2	11	7	32	0
Malignant neoplasms of meninges, brain, and other parts of central nervous system (C70-C72)	18	1	0	0	0	0	0	0	3	1	3	6	4	0
Malignant neoplasms of lymphoid, hematopoietic, and related tissues (C81-C96)	81	0	1	0	0	0	0	0	2	4	8	25	41	0
All other and unspecified malignant neoplasms (C40-C49, C69, C73-C80, C97)	92	0	0	0	0	0	0	1	1	8	21	23	38	0
Cerebrovascular Diseases (I60-I69)	111	1	0	0	0	0	0	1	3	6	10	15	75	0

TABLE F-20 (continued)
(2008 - White Males)

	Age of Decedent													
	Total	< 1	1-4	5-9	10-14	15-19	20-24	25-34	35-44	45-54	55-64	65-74	75+	Unk
Chronic Lower Respiratory Diseases (J40-J47)	199	0	0	0	0	0	1	2	1	3	22	45	125	0
Accidents (unintentional injuries) (V01-X59, Y85-Y86)	190	0	2	2	0	6	17	32	36	38	14	10	33	0
Motor Vehicle Accidents (V02-V04, (V09.0,V09.2,V12-V14, V19.0-V19.2, V19.4-V19.6,V20-V79, V80.3-V80.5, V81.0-V81.1, V82.0-V82.1, V83-V86, V87.0-V87.8, V88.0-V88.8,V89.0,V89.2)	72	0	1	2	0	4	11	11	15	10	7	3	8	0
Nontransport Accidents (W00-X59, Y86)	115	0	1	0	0	2	6	21	20	27	7	6	25	0
Diabetes Mellitus (E10-E14)	82	0	0	0	0	0	0	0	2	2	17	25	36	0
Influenza and pneumonia (J10-J18)	53	0	0	0	0	0	1	1	4	3	1	6	37	0
Alzheimer's Disease (G30)	50	0	0	0	0	0	0	0	0	0	1	3	46	0
Nephritis, Nephrotic Syndrome, and Nephrosis (N00-N07, N17-N19, N25-N27)	63	0	0	0	0	0	0	0	0	3	7	10	43	0
Septicemia (A40-A41)	48	1	0	0	0	0	0	0	1	2	11	11	22	0
Intentional self-harm (suicide) (X60-X84, Y87.0)	75	0	0	0	0	2	7	15	10	20	9	7	5	0
Chronic liver disease and Cirrhosis (K70, K73-K74)	53	0	0	0	0	0	0	0	5	21	11	10	6	0
Essential (primary) hypertension and hypertensive renal disease (I10, I12)	14	0	0	0	0	0	0	0	1	1	3	1	8	0
Aortic aneurysm and dissection (I71)	18	0	0	0	0	0	0	0	0	2	1	7	8	0
Assault (homicide) (X85-Y09, Y87.1)	18	0	0	0	0	2	1	7	2	3	3	0	0	0
Human immunodeficiency virus (HIV) (B20-B24)	11	0	0	0	0	0	0	0	4	5	1	1	0	0
Certain conditions originating in the perinatal period (P00-P96)	16	16	0	0	0	0	0	0	0	0	0	0	0	0
Congenital malformations, deformations, and chromosomal abnormalities (Q00-Q99)	8	3	0	0	0	0	0	1	1	0	1	2	0	0
All Other Causes	482	10	1	0	0	0	3	6	16	40	54	71	281	0
TOTAL	3108	32	4	2	1	10	30	70	115	281	421	569	1573	0

LCDAGEWM

Note:

*ICD Codes, Tenth Revision.

Source:

Delaware Health Statistics Center

TABLE F-21
NUMBER OF DEATHS BY AGE FOR SELECTED LEADING CAUSES OF DEATH
DELAWARE, 2008
(WHITE FEMALES)

Cause of Death*	Age of Decedent													
	Total	< 1	1-4	5-9	10-14	15-19	20-24	25-34	35-44	45-54	55-64	65-74	75+	Unk
Diseases of the Heart (100-109, I11, I13, I20-I51)	723	1	0	0	1	0	1	2	4	33	53	81	547	0
Acute rheumatic fever and chronic rheumatic heart disease (100-109)	5	0	0	0	0	0	0	0	0	0	0	0	5	0
Hypertensive heart disease (I11)	24	0	0	0	0	0	1	0	0	2	1	3	17	0
Hypertensive heart and renal disease (I13)	0	0	0	0	0	0	0	0	0	0	0	0	0	0
Ischemic heart disease (I20-I25)	495	0	0	0	0	0	0	1	4	17	42	57	374	0
All other forms of heart disease (I26-I51)	199	1	0	0	1	0	0	1	0	14	10	21	151	0
Malignant Neoplasms (C00-C97)	764	0	0	1	2	1	2	4	14	56	125	206	353	0
Malignant neoplasms of lip, oral and pharynx (C00-C14)	5	0	0	0	0	0	0	0	0	0	1	3	1	0
Malignant neoplasms of digestive organs (C15-C26)	150	0	0	0	0	0	0	1	1	4	18	45	81	0
Malignant neoplasms of respiratory and intrathoracic organs (C30-C39)	241	0	0	0	0	0	0	0	2	22	43	74	100	0
Malignant neoplasms of breast (C50)	103	0	0	0	0	0	0	1	1	16	24	24	37	0
Malignant neoplasms of female genital organs, (C51-C58)	84	0	0	0	0	0	0	1	3	4	18	17	41	0
Malignant neoplasms of urinary tract (C64-C68)	17	0	0	0	0	0	0	0	0	0	1	8	8	0
Malignant neoplasms of meninges, brain, and other parts of central nervous system (C70-C72)	21	0	0	1	0	0	1	0	1	1	5	5	7	0
Malignant neoplasms of lymphoid, hematopoietic, and related tissues (C81-C96)	70	0	0	0	1	1	0	1	1	4	7	14	41	0
All other and unspecified malignant neoplasms (C40-C49, C69, C73-C80,C97)	73	0	0	0	1	0	1	0	5	5	8	16	37	0
Cerebrovascular Diseases (I60-I69)	185	0	0	0	0	0	0	0	3	6	10	17	149	0

TABLE F-21 (continued)
(2008 - White Females)

	Age of Decedent													Unk
	Total	< 1	1-4	5-9	10-14	15-19	20-24	25-34	35-44	45-54	55-64	65-74	75+	
Chronic Lower Respiratory Diseases (J40-J47)	218	0	0	0	0	0	0	0	0	4	11	49	154	0
Accidents (unintentional injuries) (V01-X59, Y85-Y86)	112	0	1	1	0	2	7	14	11	20	5	9	42	0
Motor Vehicle Accidents (V02-V04, (V09.0,V09.2,V12-V14, V19.0-V19.2, V19.4-V19.6,V20-V79, V80.3-V80.5, V81.0-V81.1, V82.0-V82.1, V83-V86, V87.0-V87.8, V88.0-V88.8,V89.0,V89.2)	33	0	1	1	0	2	1	7	3	4	0	5	9	0
Nontransport Accidents (W00-X59, Y86)	79	0	0	0	0	0	6	7	8	16	5	4	33	0
Diabetes Mellitus (E10-E14)	83	0	0	0	1	0	0	0	3	6	8	12	53	0
Influenza and pneumonia (J10-J18)	64	0	0	0	0	0	0	0	2	3	4	5	50	0
Alzheimer's Disease (G30)	136	0	0	0	0	0	0	0	0	0	0	9	127	0
Nephritis, Nephrotic Syndrome, and Nephrosis (N00-N07, N17-N19, N25-N27)	75	0	0	0	0	0	0	0	1	1	4	7	62	0
Septicemia (A40-A41)	63	0	0	0	0	1	0	0	1	6	6	14	35	0
Intentional self-harm (suicide) (X60-X84, Y87.0)	18	0	0	0	0	0	1	2	3	7	3	1	1	0
Chronic liver disease and Cirrhosis (K70, K73-K74)	22	0	0	0	0	0	0	0	2	2	8	4	6	0
Essential (primary) hypertension and hypertensive renal disease (I10, I12)	15	0	0	0	0	0	0	0	0	0	0	1	14	0
Aortic aneurysm and dissection (I71)	12	0	0	0	0	0	0	0	0	0	1	2	9	0
Assault (homicide) (X85-Y09, Y87.1)	5	0	0	0	1	0	0	2	1	0	1	0	0	0
Human immunodeficiency virus (HIV) (B20-B24)	6	0	0	0	0	0	0	0	0	5	1	0	0	0
Certain conditions originating in the perinatal period (P00-P96)	9	9	0	0	0	0	0	0	0	0	0	0	0	0
Congenital malformations, deformations, and chromosomal abnormalities (Q00-Q99)	8	4	1	0	0	0	0	0	0	0	1	0	2	0
All Other Causes	683	3	0	0	0	2	2	7	12	29	47	63	518	0
TOTAL	3201	17	2	2	5	6	13	31	57	178	288	480	2122	0

LCDAGEWF

Note:

*ICD Codes, Tenth Revision.

Source:

Delaware Health Statistics Center

TABLE F-22
NUMBER OF DEATHS BY AGE FOR SELECTED LEADING CAUSES OF DEATH
DELAWARE, 2008
(BLACK, BOTH SEXES)

Cause of Death*	Age of Decedent													
	Total	< 1	1-4	5-9	10-14	15-19	20-24	25-34	35-44	45-54	55-64	65-74	75+	Unk
Diseases of the Heart (I00-I09, I11, I13, I20-I51)	249	0	0	0	1	0	0	1	14	44	37	44	108	0
Acute rheumatic fever and chronic rheumatic heart disease (I00-I09)	1	0	0	0	0	0	0	0	0	1	0	0	0	0
Hypertensive heart disease (I11)	16	0	0	0	0	0	0	0	1	7	3	2	3	0
Hypertensive heart and renal disease (I13)	5	0	0	0	0	0	0	0	0	2	0	0	3	0
Ischemic heart disease (I20-I25)	158	0	0	0	0	0	0	0	7	22	22	32	75	0
All other forms of heart disease (I26-I51)	69	0	0	0	1	0	0	1	6	12	12	10	27	0
Malignant Neoplasms (C00-C97)	281	0	0	0	0	1	1	1	10	44	56	84	84	0
Malignant neoplasms of lip, oral and pharynx (C00-C14)	1	0	0	0	0	0	0	0	0	0	0	0	1	0
Malignant neoplasms of digestive organs (C15-C26)	72	0	0	0	0	0	0	0	2	16	13	22	19	0
Malignant neoplasms of respiratory and intrathoracic organs (C30-C39)	75	0	0	0	0	0	0	0	2	10	21	27	15	0
Malignant neoplasms of breast (C50)	26	0	0	0	0	0	0	0	3	5	4	5	9	0
Malignant neoplasms of female genital organs, (C51-C58)	16	0	0	0	0	0	0	1	0	1	3	3	8	0
Malignant neoplasms of male genital organs, (C60-C63)	20	0	0	0	0	0	0	0	0	1	4	4	11	0
Malignant neoplasms of urinary tract (C64-C68)	15	0	0	0	0	0	0	0	0	3	3	5	4	0
Malignant neoplasms of meninges, brain, and other parts of central nervous system (C70-C72)	9	0	0	0	0	1	0	0	1	1	0	3	3	0
Malignant neoplasms of lymphoid, hematopoietic, and related tissues (C81-C96)	25	0	0	0	0	0	0	0	0	1	5	12	7	0
All other and unspecified malignant neoplasms (C40-C49, C69, C73-C80,C97)	22	0	0	0	0	0	1	0	2	6	3	3	7	0
Cerebrovascular Diseases (I60-I69)	67	0	0	1	0	0	0	0	1	6	18	11	30	0

TABLE F-22 (continued)
(2008 - Black, Both Sexes)

	Age of Decedent													
	Total	< 1	1-4	5-9	10-14	15-19	20-24	25-34	35-44	45-54	55-64	65-74	75+	Unk
Chronic Lower Respiratory Diseases (J40-J47)	53	0	0	0	0	0	0	1	0	3	7	12	30	0
Accidents (unintentional injuries) (V01-X59, Y85-Y86)	43	2	1	1	0	5	3	11	7	5	4	2	2	0
Motor Vehicle Accidents (V02-V04, (V09.0,V09.2,V12-V14, V19.0-V19.2, V19.4-V19.6,V20-V79, V80.3-V80.5, V81.0-V81.1, V82.0-V82.1, V83-V86, V87.0-V87.8, V88.0-V88.8,V89.0,V89.2)	18	0	1	0	0	1	3	4	6	1	2	0	0	0
Nontransport Accidents (W00-X59, Y86)	22	2	0	1	0	3	0	6	1	4	1	2	2	0
Diabetes Mellitus (E10-E14)	50	0	0	0	0	0	0	4	4	8	4	8	22	0
Influenza and pneumonia (J10-J18)	18	1	0	0	0	0	0	1	0	1	2	2	11	0
Alzheimer's Disease (G30)	15	0	0	0	0	0	0	0	0	0	1	2	12	0
Nephritis, Nephrotic Syndrome, and Nephrosis (N00-N07, N17-N19, N25-N27)	47	1	0	0	0	1	0	0	3	4	5	9	24	0
Septicemia (A40-A41)	27	0	0	0	0	0	0	1	1	6	7	5	7	0
Intentional self-harm (suicide) (X60-X84, Y87.0)	13	0	0	0	0	0	2	1	3	5	1	1	0	0
Chronic liver disease and Cirrhosis (K70, K73-K74)	15	0	0	0	0	0	0	1	0	4	6	2	2	0
Essential (primary) hypertension and hypertensive renal disease (I10, I12)	20	0	0	0	0	0	0	0	0	5	3	7	5	0
Aortic aneurysm and dissection (I71)	3	0	0	0	0	0	0	0	0	0	1	1	1	0
Assault (homicide) (X85-Y09, Y87.1)	41	0	0	0	0	8	7	18	6	2	0	0	0	0
Human immunodeficiency virus (HIV) (B20-B24)	41	0	0	0	0	0	0	2	11	17	10	0	1	0
Certain conditions originating in the perinatal period (P00-P96)	29	29	0	0	0	0	0	0	0	0	0	0	0	0
Congenital malformations, deformations, and chromosomal abnormalities (Q00-Q99)	9	7	0	0	0	1	1	0	0	0	0	0	0	0
All Other Causes	196	12	0	0	0	0	1	9	10	23	23	22	96	0
TOTAL	1217	52	1	2	1	16	15	51	70	177	185	212	435	0

LCDAGBLK

Note:

*ICD Codes, Tenth Revision.

Source:

Delaware Health Statistics Center

TABLE F-23
NUMBER OF DEATHS BY AGE FOR SELECTED LEADING CAUSES OF DEATH
DELAWARE, 2008
(BLACK MALES)

Cause of Death*	Age of Decedent													
	Total	< 1	1-4	5-9	10-14	15-19	20-24	25-34	35-44	45-54	55-64	65-74	75+	Unk
Diseases of the Heart (I00-I09, I11, I13, I20-I51)	122	0	0	0	0	0	0	1	6	25	20	25	45	0
Acute rheumatic fever and chronic rheumatic heart disease (I00-I09)	0	0	0	0	0	0	0	0	0	0	0	0	0	0
Hypertensive heart disease (I11)	9	0	0	0	0	0	0	0	1	2	2	2	2	0
Hypertensive heart and renal disease (I13)	3	0	0	0	0	0	0	0	0	2	0	0	1	0
Ischemic heart disease (I20-I25)	81	0	0	0	0	0	0	0	3	14	12	18	34	0
All other forms of heart disease (I26-I51)	29	0	0	0	0	0	0	1	2	7	6	5	8	0
Malignant Neoplasms (C00-C97)	137	0	0	0	0	0	0	0	2	23	29	53	30	0
Malignant neoplasms of lip, oral and pharynx (C00-C14)	1	0	0	0	0	0	0	0	0	0	0	0	1	0
Malignant neoplasms of digestive organs (C15-C26)	38	0	0	0	0	0	0	0	0	11	8	16	3	0
Malignant neoplasms of respiratory and intrathoracic organs (C30-C39)	41	0	0	0	0	0	0	0	1	5	13	16	6	0
Malignant neoplasms of breast (C50)	1	0	0	0	0	0	0	0	0	0	0	1	0	0
Malignant neoplasms of male genital organs, (C60-C63)	20	0	0	0	0	0	0	0	0	1	4	4	11	0
Malignant neoplasms of urinary tract (C64-C68)	6	0	0	0	0	0	0	0	0	2	1	2	1	0
Malignant neoplasms of meninges, brain, and other parts of central nervous system (C70-C72)	5	0	0	0	0	0	0	0	0	0	0	3	2	0
Malignant neoplasms of lymphoid, hematopoietic, and related tissues (C81-C96)	15	0	0	0	0	0	0	0	0	1	2	9	3	0
All other and unspecified malignant neoplasms (C40-C49, C69, C73-C80,C97)	10	0	0	0	0	0	0	0	1	3	1	2	3	0
Cerebrovascular Diseases (I60-I69)	35	0	0	1	0	0	0	0	0	3	11	5	15	0

TABLE F-23 (continued)
(2008 - Black Males)

	Age of Decedent													
	Total	< 1	1-4	5-9	10-14	15-19	20-24	25-34	35-44	45-54	55-64	65-74	75+	Unk
Chronic Lower Respiratory Diseases (J40-J47)	30	0	0	0	0	0	0	0	0	1	5	7	17	0
Accidents (unintentional injuries) (V01-X59, Y85-Y86)	28	2	1	1	0	3	2	8	5	2	2	2	0	0
Motor Vehicle Accidents (V02-V04, (V09.0,V09.2,V12-V14, V19.0-V19.2, V19.4-V19.6,V20-V79, V80.3-V80.5, V81.0-V81.1, V82.0-V82.1, V83-V86, V87.0-V87.8, V88.0-V88.8,V89.0,V89.2)	11	0	1	0	0	1	2	2	4	0	1	0	0	0
Nontransport Accidents (W00-X59, Y86)	14	2	0	1	0	1	0	5	1	2	0	2	0	0
Diabetes Mellitus (E10-E14)	30	0	0	0	0	0	0	4	3	5	4	4	10	0
Influenza and pneumonia (J10-J18)	8	1	0	0	0	0	0	0	0	0	1	2	4	0
Alzheimer's Disease (G30)	4	0	0	0	0	0	0	0	0	0	0	2	2	0
Nephritis, Nephrotic Syndrome, and Nephrosis (N00-N07, N17-N19, N25-N27)	23	1	0	0	0	1	0	0	3	2	4	4	8	0
Septicemia (A40-A41)	13	0	0	0	0	0	0	1	1	2	2	3	4	0
Intentional self-harm (suicide) (X60-X84, Y87.0)	10	0	0	0	0	0	2	0	2	4	1	1	0	0
Chronic liver disease and Cirrhosis (K70, K73-K74)	11	0	0	0	0	0	0	1	0	4	3	1	2	0
Essential (primary) hypertension and hypertensive renal disease (I10, I12)	9	0	0	0	0	0	0	0	0	5	2	2	0	0
Aortic aneurysm and dissection (I71)	1	0	0	0	0	0	0	0	0	0	1	0	0	0
Assault (homicide) (X85-Y09, Y87.1)	38	0	0	0	0	7	6	17	6	2	0	0	0	0
Human immunodeficiency virus (HIV) (B20-B24)	16	0	0	0	0	0	0	0	3	9	3	0	1	0
Certain conditions originating in the perinatal period (P00-P96)	12	12	0	0	0	0	0	0	0	0	0	0	0	0
Congenital malformations, deformations, and chromosomal abnormalities (Q00-Q99)	5	4	0	0	0	1	0	0	0	0	0	0	0	0
All Other Causes	76	6	0	0	0	0	0	6	3	12	9	9	31	0
TOTAL	608	26	1	2	0	12	10	38	34	99	97	120	169	0

Note:

*ICD Codes, Tenth Revision.

Source:

Delaware Health Statistics Center

LCDAGEBM

TABLE F-24
NUMBER OF DEATHS BY AGE FOR SELECTED LEADING CAUSES OF DEATH
DELAWARE, 2008
(BLACK FEMALES)

Cause of Death*	Age of Decedent													
	Total	< 1	1-4	5-9	10-14	15-19	20-24	25-34	35-44	45-54	55-64	65-74	75+	Unk
Diseases of the Heart (I00-I09, I11, I13, I20-I51)	127	0	0	0	1	0	0	0	8	19	17	19	63	0
Acute rheumatic fever and chronic rheumatic heart disease (I00-I09)	1	0	0	0	0	0	0	0	0	1	0	0	0	0
Hypertensive heart disease (I11)	7	0	0	0	0	0	0	0	0	5	1	0	1	0
Hypertensive heart and renal disease (I13)	2	0	0	0	0	0	0	0	0	0	0	0	2	0
Ischemic heart disease (I20-I25)	77	0	0	0	0	0	0	0	4	8	10	14	41	0
All other forms of heart disease (I26-I51)	40	0	0	0	1	0	0	0	4	5	6	5	19	0
Malignant Neoplasms (C00-C97)	144	0	0	0	0	1	1	1	8	21	27	31	54	0
Malignant neoplasms of lip, oral and pharynx (C00-C14)	0	0	0	0	0	0	0	0	0	0	0	0	0	0
Malignant neoplasms of digestive organs (C15-C26)	34	0	0	0	0	0	0	0	2	5	5	6	16	0
Malignant neoplasms of respiratory and intrathoracic organs (C30-C39)	34	0	0	0	0	0	0	0	1	5	8	11	9	0
Malignant neoplasms of breast (C50)	25	0	0	0	0	0	0	0	3	5	4	4	9	0
Malignant neoplasms of female genital organs, (C51-C58)	16	0	0	0	0	0	0	1	0	1	3	3	8	0
Malignant neoplasms of urinary tract (C64-C68)	9	0	0	0	0	0	0	0	0	1	2	3	3	0
Malignant neoplasms of meninges, brain, and other parts of central nervous system (C70-C72)	4	0	0	0	0	1	0	0	1	1	0	0	1	0
Malignant neoplasms of lymphoid, hematopoietic, and related tissues (C81-C96)	10	0	0	0	0	0	0	0	0	0	3	3	4	0
All other and unspecified malignant neoplasms (C40-C49, C69, C73-C80, C97)	12	0	0	0	0	0	1	0	1	3	2	1	4	0
Cerebrovascular Diseases (I60-I69)	32	0	0	0	0	0	0	0	1	3	7	6	15	0

TABLE F-24 (continued)
(2008 - Black Females)

	Age of Decedent													
	Total	< 1	1-4	5-9	10-14	15-19	20-24	25-34	35-44	45-54	55-64	65-74	75+	Unk
Chronic Lower Respiratory Diseases (J40-J47)	23	0	0	0	0	0	0	1	0	2	2	5	13	0
Accidents (unintentional injuries) (V01-X59, Y85-Y86)	15	0	0	0	0	2	1	3	2	3	2	0	2	0
Motor Vehicle Accidents (V02-V04, (V09.0,V09.2,V12-V14, V19.0-V19.2, V19.4-V19.6,V20-V79, V80.3-V80.5, V81.0-V81.1, V82.0-V82.1, V83-V86, V87.0-V87.8, V88.0-V88.8,V89.0,V89.2)	7	0	0	0	0	0	1	2	2	1	1	0	0	0
Nontransport Accidents (W00-X59, Y86)	8	0	0	0	0	2	0	1	0	2	1	0	2	0
Diabetes Mellitus (E10-E14)	20	0	0	0	0	0	0	0	1	3	0	4	12	0
Influenza and pneumonia (J10-J18)	10	0	0	0	0	0	0	1	0	1	1	0	7	0
Alzheimer's Disease (G30)	11	0	0	0	0	0	0	0	0	0	1	0	10	0
Nephritis, Nephrotic Syndrome, and Nephrosis (N00-N07, N17-N19, N25-N27)	24	0	0	0	0	0	0	0	0	2	1	5	16	0
Septicemia (A40-A41)	14	0	0	0	0	0	0	0	0	4	5	2	3	0
Intentional self-harm (suicide) (X60-X84, Y87.0)	3	0	0	0	0	0	0	1	1	1	0	0	0	0
Chronic liver disease and Cirrhosis (K70, K73-K74)	4	0	0	0	0	0	0	0	0	0	3	1	0	0
Essential (primary) hypertension and hypertensive renal disease (I10, I12)	11	0	0	0	0	0	0	0	0	0	1	5	5	0
Aortic aneurysm and dissection (I71)	2	0	0	0	0	0	0	0	0	0	0	1	1	0
Assault (homicide) (X85-Y09, Y87.1)	3	0	0	0	0	1	1	1	0	0	0	0	0	0
Human immunodeficiency virus (HIV) (B20-B24)	25	0	0	0	0	0	0	2	8	8	7	0	0	0
Certain conditions originating in the perinatal period (P00-P96)	17	17	0	0	0	0	0	0	0	0	0	0	0	0
Congenital malformations, deformations, and chromosomal abnormalities (Q00-Q99)	4	3	0	0	0	0	1	0	0	0	0	0	0	0
All Other Causes	120	6	0	0	0	0	1	3	7	11	14	13	65	0
TOTAL	609	26	0	0	1	4	5	13	36	78	88	92	266	0

Note:
*ICD Codes, Tenth Revision.

LCDAGEBF

Source:
Delaware Health Statistics Center

TABLE F-25
HIV INFECTION/AIDS¹ DEATHS BY COUNTY, RACE, HISPANIC² ORIGIN AND SEX
U.S., DELAWARE, AND COUNTIES, 1994-2008

Area/ Race	1994	1995	1996	1997	1998	1999	2000	2001	2002	2003	2004	2005	2006	2007	2008
Delaware	138	163	132	60	55	65	68	67	70	80	58	63	53	55	58
Males	115	132	101	45	47	49	46	47	51	58	36	43	33	33	27
White	47	55	36	10	8	14	11	10	14	18	7	8	9	13	11
Black	68	76	65	35	39	34	35	37	37	40	29	35	24	20	16
Females	23	31	31	15	8	16	22	20	19	22	22	20	20	22	31
White	4	8	5	1	1	2	2	1	6	3	6	2	1	1	6
Black	19	23	26	14	7	14	20	19	13	19	16	18	19	21	25
Kent	16	17	13	6	5	8	4	9	4	8	8	5	11	9	8
Males	12	14	9	6	3	5	0	5	4	7	5	2	7	5	2
White	4	7	4	1	0	3	0	2	0	2	2	0	1	2	1
Black	8	6	5	5	3	2	0	3	4	5	3	2	6	3	1
Females	4	3	4	0	2	3	4	4	0	1	3	3	4	4	6
White	2	0	2	0	0	0	2	0	0	1	0	0	0	0	1
Black	2	3	2	0	2	3	2	4	0	0	3	3	4	4	5
New Castle	100	121	109	49	44	45	54	52	56	69	46	51	34	39	42
Males	84	96	82	34	38	34	37	38	40	49	29	35	19	21	17
White	29	29	23	6	7	7	6	6	9	15	4	6	5	6	4
Black	55	67	59	28	31	27	31	32	31	34	25	29	14	15	13
Females	16	25	27	15	6	11	17	14	16	20	17	16	15	18	25
White	1	8	3	1	1	2	0	1	4	2	5	2	1	1	5
Black	15	17	24	14	5	9	17	13	12	18	12	14	14	17	20
Wilmington	56	71	68	27	28	23	35	37	28	43	25	33	19	22	29
Males	45	59	47	15	24	20	25	28	22	30	15	21	7	10	13
White	5	7	4	2	2	2	4	3	4	5	0	2	0	0	1
Black	40	52	43	13	22	18	21	25	18	25	15	19	7	10	12
Females	11	12	21	12	4	3	10	9	6	13	10	12	12	12	16
White	0	2	1	0	1	0	0	1	0	0	1	1	1	1	3
Black	11	10	20	12	3	3	10	8	6	13	9	11	11	11	13
Bal of NCCo	44	50	41	22	16	22	19	15	28	26	21	18	15	17	13
Males	39	37	35	19	14	14	12	10	18	19	14	14	12	11	4
White	24	22	19	4	5	5	2	3	5	10	4	4	5	6	3
Black	15	15	16	15	9	9	10	7	13	9	10	10	7	5	1
Females	5	13	6	3	2	8	7	5	10	7	7	4	3	6	9
White	1	6	2	1	0	2	0	0	4	2	4	1	0	0	2
Black	4	7	4	2	2	6	7	5	6	5	3	3	3	6	7
Sussex	22	25	10	5	6	12	10	6	10	3	4	7	8	7	8
Males	19	22	10	5	6	10	9	4	7	2	2	6	7	7	8
White	14	19	9	3	1	4	5	2	5	1	1	2	3	5	6
Black	5	3	1	2	5	5	4	2	2	1	1	4	4	2	2
Females	3	3	0	0	0	2	1	2	3	1	2	1	1	0	0
White	1	0	0	0	0	0	0	0	2	0	1	0	0	0	0
Black	2	3	0	0	0	2	1	2	1	1	1	1	1	0	0
Hispanic	3	11	5	1	3	1	1	3	4	2	1	2	1	1	1
Males	2	10	3	1	3	1	1	2	4	1	0	2	0	0	1
Females	1	1	2	0	0	0	0	1	0	1	1	0	1	1	0

Notes:

1. See Table F-12 for ICD-9 and ICD-10 Codes.
2. People of Hispanic origin may be of any race. See Hispanic Origin in the Technical Notes.

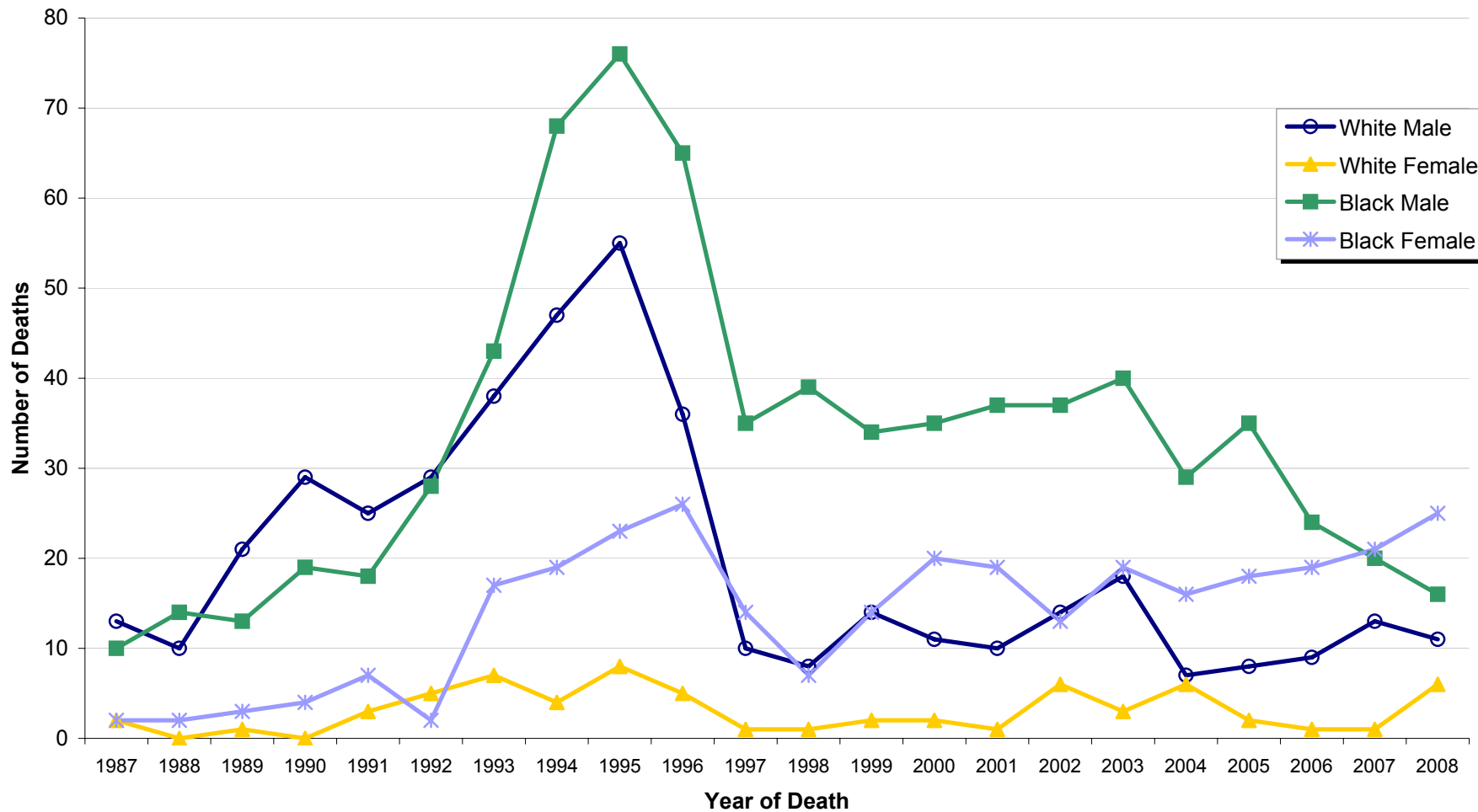
Sources:

Delaware Health Statistics Center
National Center for Health Statistics

AIDS

Figure F-3
Number of HIV Deaths by Race and Sex

Delaware, 1987-2008



Source: Delaware Health Statistics Center

TABLE F-26
NUMBER AND PERCENT OF DEATHS BY METHOD OF DISPOSITION AND RACE
DELAWARE, COUNTIES AND CITY OF WILMINGTON, 2008

Area/ Method of Disposition	Race							
	All Races		White		Black		Other	
	Number	Percent	Number	Percent	Number	Percent	Number	Percent
Delaware	7602	100.0	6309	100.0	1217	100.0	76	100.0
Burial	4478	58.9	3573	56.6	873	71.7	32	42.1
Cremation	2772	36.5	2425	38.4	305	25.1	42	55.3
Donation	47	0.6	44	0.7	3	0.2	0	0.0
Entombment	163	2.1	154	2.4	9	0.7	0	0.0
Removal from State	108	1.4	82	1.3	24	2.0	2	2.6
Unknown	34	0.4	31	0.5	3	0.2	0	0.0
Kent	1367	100.0	1133	100.0	220	100.0	14	100.0
Burial	835	61.1	660	58.3	167	75.9	8	57.1
Cremation	488	35.7	437	38.6	45	20.5	6	42.9
Donation	9	0.7	7	0.6	2	0.9	0	0.0
Entombment	7	0.5	6	0.5	1	0.5	0	0.0
Removal from State	20	1.5	16	1.4	4	1.8	0	0.0
Unknown	8	0.6	7	0.6	1	0.5	0	0.0
New Castle	4290	100.0	3441	100.0	802	100.0	47	100.0
Burial	2524	58.8	1959	56.9	551	68.7	14	29.8
Cremation	1531	35.7	1276	37.1	224	27.9	31	66.0
Donation	16	0.4	16	0.5	0	0.0	0	0.0
Entombment	140	3.3	133	3.9	7	0.9	0	0.0
Removal from State	64	1.5	43	1.2	19	2.4	2	4.3
Unknown	15	0.3	14	0.4	1	0.1	0	0.0
Wilmington	726	100.0	334	100.0	389	100.0	3	100.0
Burial	437	60.2	173	51.8	263	67.6	1	33.3
Cremation	248	34.2	130	38.9	116	29.8	2	66.7
Donation	3	0.4	3	0.9	0	0.0	0	0.0
Entombment	29	4.0	26	7.8	3	0.8	0	0.0
Removal from State	9	1.2	2	0.6	7	1.8	0	0.0
Unknown	0	0.0	0	0.0	0	0.0	0	0.0
Balance of NC County	3564	100.0	3107	100.0	413	100.0	44	100.0
Burial	2087	58.6	1786	57.5	288	69.7	13	29.5
Cremation	1283	36.0	1146	36.9	108	26.2	29	65.9
Donation	13	0.4	13	0.4	0	0.0	0	0.0
Entombment	111	3.1	107	3.4	4	1.0	0	0.0
Removal from State	55	1.5	41	1.3	12	2.9	2	4.5
Unknown	15	0.4	14	0.5	1	0.2	0	0.0
Sussex	1945	100.0	1735	100.0	195	100.0	15	100.0
Burial	1119	57.5	954	55.0	155	79.5	10	66.7
Cremation	753	38.7	712	41.0	36	18.5	5	33.3
Donation	22	1.1	21	1.2	1	0.5	0	0.0
Entombment	16	0.8	15	0.9	1	0.5	0	0.0
Removal from State	24	1.2	23	1.3	1	0.5	0	0.0
Unknown	11	0.6	10	0.6	1	0.5	0	0.0

DISPRACE

Note:

Percentages are calculated based upon the total number of deaths in each race category.

Source:

Delaware Health Statistics Center

TABLE F-27
LIFE EXPECTANCY AT BIRTH* BY RACE AND SEX

DELAWARE, 1988-2008

Year	Race and Sex								
	All Races			White			Black		
	Both Sexes	Male	Female	Both Sexes	Male	Female	Both Sexes	Male	Female
2008	78.3	75.7	80.8	78.9	76.3	81.4	75.7	72.7	78.4
2007	78.8	76.0	81.5	79.2	76.5	81.9	76.2	72.9	79.3
2006	78.4	75.7	81.0	79.1	76.4	81.7	74.8	71.4	77.8
2005	77.7	75.0	80.2	78.4	75.7	81.0	74.1	71.3	76.6
2004	77.8	74.9	80.5	78.3	75.5	80.9	73.8	70.4	77.0
2003	76.9	74.5	80.0	78.1	75.3	80.7	72.6	69.2	75.8
2002	77.3	74.6	79.8	77.8	75.4	80.1	73.8	69.5	77.9
2001	76.3	73.9	78.7	77.1	74.6	79.5	72.1	69.5	74.4
2000	76.5	73.9	79.0	77.1	74.5	79.6	72.5	69.4	75.5
1999	76.8	73.9	79.6	77.6	74.7	80.3	72.6	68.8	76.2
1998	75.9	73.3	78.4	77.0	74.5	79.4	70.3	66.9	73.5
1997	75.8	73.3	78.2	76.7	74.2	79.1	71.0	68.3	73.5
1996	75.4	72.5	78.1	76.7	73.9	79.4	68.8	65.2	72.2
1995	75.5	72.5	78.4	76.8	74.2	79.4	68.9	64.4	73.5
1994	75.1	71.4	78.7	76.1	72.6	79.6	69.5	65.0	74.1
1993	75.2	71.9	78.5	76.5	73.6	79.3	68.5	63.4	73.6
1992	75.4	72.4	78.2	76.3	73.5	78.9	70.3	66.2	74.3
1991	75.0	71.9	77.9	76.0	73.0	78.9	69.4	66.2	72.4
1990	75.0	71.9	77.9	76.0	73.2	78.8	69.3	65.4	73.1
1989	74.3	71.1	77.3	75.3	72.2	78.2	68.4	64.4	72.4
1988	74.2	70.9	77.3	75.1	71.9	78.2	68.8	65.0	72.6

LIFE_TB1

Note:

*Life expectancy at birth is the average expected lifetime of people born in the listed year.

Source:

Delaware Health Statistics Center

TABLE F-28
AVERAGE REMAINING YEARS OF LIFE* BY AGE, RACE, AND SEX

DELAWARE, 2008

Age Group	Race and Sex								
	All Races			White			Black		
	Both Sexes	Male	Female	Both Sexes	Male	Female	Both Sexes	Male	Female
0-5	78.3	75.7	80.8	78.9	76.3	81.4	75.7	72.7	78.4
5-10	74.0	71.5	76.4	74.4	71.9	76.8	72.0	69.0	74.7
10-15	69.1	66.6	71.4	69.4	66.9	71.8	67.1	64.0	69.7
15-20	64.1	61.6	66.5	64.5	62.0	66.9	62.1	59.0	64.8
20-25	59.3	56.8	61.6	59.6	57.1	62.0	57.4	54.5	59.9
25-30	54.6	52.2	56.8	54.9	52.5	57.2	52.7	49.8	55.1
30-35	49.9	47.7	52.0	50.2	48.0	52.3	48.1	45.5	50.4
35-40	45.3	43.1	47.2	45.6	43.4	47.6	43.6	41.2	45.6
40-45	40.7	38.6	42.5	40.9	38.9	42.8	39.2	36.7	41.2
45-50	36.1	34.1	37.9	36.3	34.4	38.1	34.6	32.2	36.7
50-55	31.8	30.0	33.4	32.0	30.2	33.6	30.5	28.1	32.5
55-60	27.6	25.9	29.1	27.8	26.1	29.3	26.7	24.6	28.5
60-65	23.6	22.0	25.0	23.7	22.1	25.1	23.0	20.9	24.6
65-70	19.7	18.3	20.9	19.8	18.4	21.0	19.3	17.3	20.8
70-75	16.2	14.9	17.3	16.2	15.0	17.2	16.4	14.5	17.8
75-80	12.9	11.8	13.8	12.9	11.7	13.8	13.3	11.8	14.1
80-85	10.2	9.3	10.7	10.0	9.2	10.6	11.4	10.0	12.1
85+	7.9	7.2	8.2	7.7	7.1	8.0	9.2	7.8	9.9

LIFE_TB2

Note:

*Average number of years of life remaining at the beginning of the age interval.

Source:

Delaware Health Statistics Center

TABLE F-29
MATERNAL DEATHS

DELAWARE AND COUNTIES, 1982-2008

Year	Area			
	Delaware	Kent	New Castle	Sussex
2008	3	1	2	0
2007	1	0	1	0
2006	1	0	1	0
2005	1	0	1	0
2004	1	0	1	0
2003	2	0	2	0
2002	0	0	0	0
2001	2	0	1	1
2000	3	1	2	0
1999	1	0	1	0
1998	2	0	2	0
1997	1	0	1	0
1996	0	0	0	0
1995	0	0	0	0
1994	0	0	0	0
1993	0	0	0	0
1992	0	0	0	0
1991	1	0	0	1
1990	0	0	0	0
1989	2	0	1	1
1988	1	0	1	0
1987	0	0	0	0
1986	0	0	0	0
1985	1	0	1	0
1984	0	0	0	0
1983	0	0	0	0

MATERNAL

Note:

Prior to 1999, maternal deaths included ICD-9 categories 630-676. For 1999 and later, maternal deaths include ICD-10 categories O00-O95, O98-O99, and A34.

Source:

Delaware Health Statistics Center

TABLE F-30
 FIVE-YEAR AGE-ADJUSTED MORTALITY RATES FOR SELECTED CAUSES OF DEATH
 DELAWARE AND COUNTIES, 2004-2008

LEADING CAUSES OF DEATH	AREA				RACE	
	DE	Kent	NCC	Sussex	White	Black
Diseases of the heart	202.0	253.8	194.4	190.6	196.3	236.4
Malignant neoplasms	192.0	212.5	191.2	185.0	189.9	208.1
Chronic lower respiratory diseases	41.4	55.9	40.8	35.9	42.8	33.4
Cerebrovascular diseases	39.1	39.8	44.2	28.9	36.5	56.6
Accidents (unintentional injuries)	35.8	40.3	32.7	44.5	39.3	24.1
Dementia	24.8	20.7	31.5	13.8	23.9	33.5
Diabetes mellitus	22.8	28.9	23.1	19.2	19.6	43.2
Alzheimer's disease	19.6	18.1	17.6	24.3	20.2	14.1
Nephritis, nephrotic syndrome, and nephrosis	16.0	17.6	17.2	12.7	13.7	31.6
Influenza and pneumonia	14.7	17.5	13.5	15.9	14.7	14.9
Septicemia	13.1	18.4	13.7	9.5	12.1	19.5
Intentional self-harm (suicide)	10.6	10.5	10.3	11.9	12.3	5.4
Other diseases of respiratory system	9.0	10.6	8.9	8.4	9.0	9.1
Chronic liver disease and cirrhosis	8.0	8.8	7.5	8.8	8.5	6.3
Certain conditions originating in the perinatal period	6.9	4.9	7.6	6.5	4.4	14.3
Human immunodeficiency virus (HIV)	6.5	5.7	7.7	3.9	1.9	26.1
Assault (homicide)	6.0	4.5	7.3	3.2	2.9	16.3
Essential (primary) hypertension and hypertensive renal disease	6.0	7.8	6.3	4.4	4.7	14.2
Parkinson's disease	5.6	4.4	6.2	5.1	6.1	NA
Pneumonitis due to solids and liquids	5.4	3.4	5.4	6.4	5.4	5.5
Aortic aneurysm and dissection	3.7	4.0	3.2	4.8	3.6	4.1
Congenital malformations, deformations, and chromosomal abnormalities	2.8	3.2	2.6	3.1	2.7	3.0

AADR

Notes:

1. Rates per 100,000, adjusted to U.S. 2000 population.
2. See Appendix E for ICD-10 cause of death codes.
3. "NA" indicates rate does not meet standards of reliability or precision; based on fewer than 20 deaths in the numerator.

Source:

Delaware Health Statistics Center

TABLE F-31
 FIVE-YEAR AGE-ADJUSTED MORTALITY RATES FOR SELECTED LEADING CAUSES OF DEATH
 DELAWARE AND COUNTIES, 1988-2008

Cause of Death/ Area	1988 -1992	1989 -1993	1990 -1994	1991 -1995	1992 -1996	1993 -1997	1994 -1998	1995 -1999	1996 -2000	1997 -2001	1998 -2002	1999 -2003	2000 -2004	2001 -2005	2002 -2006	2003 -2007	2004 -2008
Diseases of the Heart																	
Delaware	346.1	331.0	321.8	313.7	306.8	301.5	292.0	283.5	274.7	266.8	256.9	251.8	243.8	236.7	224.2	215.4	202.0
Kent	353.1	335.8	331.8	322.2	317.1	316.8	313.3	312.5	307.8	303.6	296.3	290.7	280.0	276.8	269.6	265.0	253.8
New Castle	343.4	328.7	317.6	309.7	303.0	296.8	287.6	276.4	266.8	259.0	250.0	245.3	239.2	232.5	219.0	210.0	194.4
Sussex	351.8	336.8	328.5	320.4	311.3	305.1	290.7	284.5	275.9	265.0	252.0	246.9	236.2	225.6	211.8	201.2	190.6
Malignant Neoplasms																	
Delaware	242.5	242.5	242.7	240.0	238.9	236.1	231.1	228.1	221.0	217.6	210.3	206.2	202.4	201.0	194.9	193.8	192.0
Kent	241.2	235.8	229.2	230.1	230.6	222.3	222.5	228.7	220.2	221.5	218.8	217.7	212.2	214.9	208.0	210.6	212.5
New Castle	243.4	242.1	245.2	242.0	240.1	238.1	235.2	230.5	223.1	219.4	212.0	205.9	202.2	201.2	194.1	191.5	191.2
Sussex	241.3	249.7	245.8	242.3	241.9	241.1	227.5	223.4	217.7	212.7	203.6	201.8	198.6	194.6	191.5	191.9	185.0
Cerebrovascular Diseases																	
Delaware	58.8	58.5	57.6	56.3	53.7	52.6	52.0	50.8	51.8	51.5	51.5	50.9	48.8	45.9	44.2	41.6	39.1
Kent	68.5	68.5	68.4	66.3	69.2	70.0	68.9	63.4	60.5	54.9	55.7	53.7	50.6	49.7	48.9	42.9	39.8
New Castle	56.2	55.9	56.3	54.0	51.7	49.7	49.8	50.0	53.0	53.6	53.8	53.9	52.2	49.2	47.8	47.0	44.2
Sussex	59.3	59.1	54.3	56.1	49.6	49.5	47.2	45.5	44.1	45.0	44.3	43.0	40.8	37.2	34.4	30.4	28.9
Chronic Lower Respiratory Diseases																	
Delaware	37.4	39.1	39.8	39.7	40.2	40.4	40.9	41.4	42.4	41.8	42.1	41.1	40.4	40.9	40.6	39.8	41.4
Kent	42.7	43.4	45.7	46.3	49.3	52.8	53.9	54.2	52.4	49.3	45.0	44.6	45.7	49.1	50.0	51.8	55.9
New Castle	34.4	34.9	34.8	34.8	35.8	37.2	38.1	39.1	41.5	41.7	41.3	40.4	39.8	39.2	39.0	38.9	40.8
Sussex	42.3	47.8	50.0	48.7	45.9	40.9	39.6	38.9	38.7	37.6	41.8	40.6	38.5	40.1	39.0	36.1	35.9
Diabetes mellitus																	
Delaware	31.6	32.4	30.1	29.3	29.0	28.0	28.4	27.9	26.9	26.9	26.3	25.7	25.7	26.0	24.6	24.0	22.8
Kent	24.7	29.6	29.1	30.8	32.0	32.7	31.2	31.8	28.8	27.5	28.2	28.0	27.3	30.7	30.8	29.2	28.9
New Castle	33.2	33.3	29.8	27.8	27.1	26.7	27.5	26.6	26.6	27.2	26.1	25.0	26.0	26.0	24.3	24.2	23.1
Sussex	32.0	32.2	31.9	32.7	32.0	28.3	28.9	28.6	26.5	25.8	26.0	26.2	24.6	23.8	21.9	21.0	19.2
Influenza and pneumonia																	
Delaware	33.1	33.4	33.9	33.9	33.3	32.2	33.1	30.6	30.2	28.7	26.1	22.2	21.1	18.7	16.9	15.1	14.7
Kent	39.9	36.8	34.6	32.0	32.4	30.2	31.5	32.9	36.4	34.0	31.6	27.3	24.9	20.5	20.1	18.3	17.5
New Castle	27.9	29.6	31.0	31.3	31.7	30.6	30.7	28.2	27.5	25.0	23.1	19.1	17.7	15.8	14.3	12.9	13.5
Sussex	43.0	41.6	41.5	42.2	38.3	37.9	40.1	35.1	33.2	34.4	30.2	26.4	27.1	24.1	20.6	17.9	15.9
Alzheimer's Disease																	
Delaware	6.3	6.6	7.2	7.0	7.3	7.5	7.8	9.4	11.0	13.1	14.6	16.5	17.0	18.0	18.5	19.3	19.6
Kent	---	---	4.7	---	4.4	---	---	4.0	5.0	8.7	10.1	12.1	12.8	14.2	13.3	16.1	18.1
New Castle	7.3	7.6	8.3	7.9	8.3	8.9	9.7	11.7	13.8	15.9	17.3	18.8	18.0	18.0	18.3	18.5	17.6
Sussex	5.4	5.2	6.0	6.1	6.3	6.6	6.3	6.9	8.2	9.1	10.8	13.8	17.0	20.0	21.7	22.7	24.3
Nephritis, nephrotic syndrome, and nephrosis																	
Delaware	14.5	13.7	13.9	13.6	13.6	12.9	13.3	13.2	13.5	13.5	14.1	14.2	14.4	14.4	14.9	15.3	16.0
Kent	8.6	7.8	8.9	9.8	10.2	10.2	11.4	10.8	12.4	15.3	17.6	17.9	20.0	18.4	16.8	16.0	17.6
New Castle	16.2	15.8	15.5	15.1	14.7	14.2	14.5	14.5	14.2	13.7	13.5	13.3	13.7	13.9	15.0	16.1	17.2
Sussex	13.5	12.0	12.9	12.0	12.9	11.1	11.3	11.5	12.7	12.2	13.7	14.3	13.1	13.1	13.6	13.2	12.7
Septicemia																	
Delaware	12.2	11.8	12.8	13.5	14.2	14.6	15.0	14.4	15.2	15.6	15.9	16.0	15.9	15.1	14.3	13.4	13.1
Kent	11.4	11.9	11.3	10.7	10.7	11.6	12.0	11.9	13.8	14.3	15.7	17.0	18.4	17.8	18.7	18.3	18.4
New Castle	13.8	13.2	14.5	15.4	16.2	16.9	17.3	16.6	17.4	17.4	17.4	17.1	16.5	15.6	14.7	13.8	13.7
Sussex	8.7	8.3	9.3	10.3	11.2	10.8	11.6	10.9	10.8	12.0	12.8	13.0	13.3	12.9	11.5	10.3	9.5

TABLE F-31 (continued)

Cause of Death/ Area	1988 -1992	1989 -1993	1990 -1994	1991 -1995	1992 -1996	1993 -1997	1994 -1998	1995 -1999	1996 -2000	1997 -2001	1998 -2002	1999 -2003	2000 -2004	2001 -2005	2002 -2006	2003 -2007	2004 -2008
Intentional self-harm																	
Delaware	12.9	12.7	12.0	11.8	12.1	12.0	11.2	11.2	11.0	11.2	10.7	11.2	11.1	11.0	10.3	10.5	10.6
Kent	10.8	11.2	11.0	9.9	11.7	11.6	11.4	11.9	12.6	12.1	11.7	11.5	10.5	10.2	10.4	9.9	10.5
New Castle	13.1	12.8	12.0	11.7	11.8	11.3	10.2	10.1	9.8	10.3	9.9	10.7	11.0	11.2	10.0	10.4	10.3
Sussex	13.7	13.6	12.8	14.0	13.8	14.5	14.2	14.0	13.3	12.8	12.2	11.9	11.4	10.5	10.8	11.0	11.9
Chronic liver disease and cirrhosis																	
Delaware	11.2	11.3	10.6	9.8	9.9	9.5	9.1	9.2	9.3	8.9	9.3	9.8	9.8	9.5	9.1	8.5	8.0
Kent	9.3	9.8	11.1	11.1	10.2	10.3	10.0	9.8	10.5	10.8	11.4	12.1	11.6	10.8	10.2	9.8	8.8
New Castle	11.4	11.6	10.6	9.7	9.9	9.4	8.7	8.8	9.0	8.3	8.6	9.1	9.4	8.8	8.9	8.0	7.5
Sussex	11.8	11.3	9.8	9.2	9.6	9.0	9.4	9.5	9.0	9.6	10.1	10.5	10.1	10.5	9.3	9.2	8.8
Assault (Homicide)																	
Delaware	5.7	5.8	5.2	5.2	5.4	5.2	4.9	4.7	4.2	3.6	3.7	3.6	3.8	4.6	5.0	5.1	6.0
Kent	5.5	6.0	6.3	6.1	5.5	4.1	3.4	---	---	---	---	---	---	---	3.1	3.6	4.5
New Castle	5.6	5.5	4.8	4.9	5.2	5.3	5.3	5.3	5.1	4.5	4.6	4.3	4.6	5.3	6.0	6.1	7.3
Sussex	6.3	6.7	5.8	5.9	5.9	5.6	5.0	4.6	2.8	---	---	---	---	3.6	3.4	2.9	3.2
Certain conditions originating in the perinatal period																	
Delaware	8.6	8.0	6.9	6.1	5.4	5.3	5.3	5.8	6.7	7.8	8.3	8.5	8.2	8.2	7.5	7.2	6.9
Kent	7.4	6.3	6.1	5.2	5.3	5.5	5.6	5.9	6.8	7.2	8.0	8.2	8.2	8.0	6.6	5.2	4.9
New Castle	9.0	8.9	7.6	6.8	5.8	5.5	5.1	5.9	6.9	8.2	8.8	9.2	8.7	8.7	8.0	7.8	7.6
Sussex	8.5	6.2	4.7	4.1	3.6	4.2	5.8	5.5	5.8	7.2	6.9	6.1	6.5	6.9	6.5	6.8	6.5
Congenital malformations																	
Delaware	5.1	4.8	4.5	4.3	4.2	4.4	4.1	4.1	3.9	3.7	3.5	3.4	3.4	3.2	3.1	2.8	2.8
Kent	5.9	5.8	6.4	5.2	4.7	3.6	3.5	3.3	3.2	3.3	3.9	3.5	3.4	3.1	3.4	2.8	3.2
New Castle	4.7	4.2	3.6	3.7	3.7	4.0	3.8	3.9	3.9	3.6	3.2	3.1	3.2	3.0	2.9	2.7	2.6
Sussex	5.8	6.4	5.8	6.0	5.7	6.6	5.9	5.5	4.8	4.6	4.1	4.0	3.9	3.8	3.8	3.5	3.1
Human immunodeficiency virus (HIV)																	
Delaware	6.8	9.0	11.8	14.6	16.5	16.2	14.6	12.5	9.9	8.1	8.2	8.8	8.4	8.2	7.7	7.2	6.5
Kent	6.3	7.5	9.6	11.5	11.7	10.5	9.4	8.0	5.9	5.2	4.8	5.2	5.2	5.2	5.3	5.9	5.7
New Castle	7.0	9.9	13.0	16.2	18.8	19.0	17.2	14.9	12.1	9.8	9.9	10.8	10.7	10.4	9.6	8.8	7.7
Sussex	6.8	7.2	9.1	11.8	12.3	11.0	10.0	8.3	5.9	5.2	5.8	5.5	4.3	3.7	3.9	3.5	3.9
Accidents (unintentional injuries)																	
Delaware	36.2	34.8	35.4	35.7	35.4	36.1	36.4	35.8	36.0	36.8	36.3	36.0	35.9	35.2	35.3	34.9	35.8
Kent	42.6	41.5	38.1	39.6	38.0	35.2	35.0	37.8	37.5	38.9	37.7	37.7	38.5	39.1	41.0	39.9	40.3
New Castle	32.1	30.1	30.9	30.7	31.0	32.4	33.4	33.4	33.9	34.5	34.5	33.7	32.3	31.6	31.8	31.6	32.7
Sussex	46.5	46.6	51.1	51.3	49.6	50.8	48.6	42.2	42.1	44.0	42.2	43.2	46.6	44.4	42.9	42.8	44.5
Essential (primary) hypertension and hypertensive renal disease																	
Delaware	3.5	3.5	3.5	3.4	3.8	3.7	4.2	4.2	4.8	5.2	5.7	5.9	6.9	7.2	6.8	6.3	6.0
Kent	---	---	5.3	5.9	5.5	5.7	5.2	4.9	4.5	5.4	6.2	6.3	7.1	9.0	9.2	7.9	7.8
New Castle	2.9	3.1	2.9	2.6	3.0	2.8	3.5	3.6	4.4	4.9	5.4	5.9	7.1	7.5	7.0	6.8	6.3
Sussex	4.3	3.8	3.8	4.1	4.8	4.6	5.5	5.6	6.1	5.7	5.9	5.6	5.9	5.4	5.1	4.5	4.4
Aortic aneurysm and dissection																	
Delaware	9.3	8.9	8.4	8.4	7.1	7.0	6.7	6.5	6.4	6.6	6.3	6.7	6.3	5.8	5.0	4.5	3.7
Kent	9.1	9.9	9.2	9.1	7.8	7.7	8.0	8.6	9.0	9.3	9.9	10.0	9.3	8.4	7.2	5.5	4.0
New Castle	9.0	8.1	7.3	7.6	6.2	6.2	6.0	5.9	5.8	6.2	5.9	6.3	5.8	5.3	4.4	3.8	3.2
Sussex	10.4	10.5	10.7	10.3	9.3	8.7	7.7	6.6	6.5	6.0	5.4	5.9	6.1	5.8	5.4	5.5	4.8

TABLE F-31 (continued)

Cause of Death/ Area	1988 -1992	1989 -1993	1990 -1994	1991 -1995	1992 -1996	1993 -1997	1994 -1998	1995 -1999	1996 -2000	1997 -2001	1998 -2002	1999 -2003	2000 -2004	2001 -2005	2002 -2006	2003 -2007	2004 -2008
Pneumonitis due to solids and liquids																	
Delaware	4.2	4.4	4.1	4.2	4.5	5.2	5.7	7.0	7.8	8.9	9.1	9.7	8.9	8.2	7.1	6.4	5.4
Kent	---	---	---	---	---	---	---	4.5	4.8	4.1	5.0	5.9	5.3	5.4	5.0	3.9	3.4
New Castle	4.6	5.1	4.9	5.4	5.4	6.3	6.9	8.3	8.9	10.6	10.4	10.9	9.8	9.2	7.4	6.6	5.4
Sussex	3.6	---	---	---	3.1	3.7	4.2	5.3	7.1	7.7	8.5	9.3	9.1	7.9	7.5	7.2	6.4
Other diseases of respiratory system																	
Delaware	6.2	6.9	7.1	7.2	7.4	7.6	7.9	7.9	8.3	8.4	8.7	8.4	8.7	8.5	8.9	8.8	9.0
Kent	5.8	5.6	5.5	5.6	4.9	5.5	6.2	7.2	9.1	8.9	9.6	9.5	9.5	9.0	10.4	10.7	10.6
New Castle	6.3	7.2	7.0	7.0	7.2	7.5	7.4	7.5	7.8	8.1	8.3	8.1	8.7	8.7	8.7	8.2	8.9
Sussex	6.2	6.8	8.1	8.4	9.4	9.3	10.1	9.3	9.2	8.9	9.4	8.4	8.3	7.6	8.4	8.7	8.4
Parkinson's disease																	
Delaware	3.4	3.3	3.5	3.4	3.5	3.4	3.8	4.0	4.6	5.1	5.5	5.5	5.4	5.7	5.5	5.6	5.6
Kent	---	---	---	---	---	---	---	---	---	4.3	4.6	4.7	4.1	4.7	4.6	4.4	4.4
New Castle	3.9	3.8	4.2	4.2	4.1	4.0	4.3	4.4	5.0	5.4	6.0	5.9	5.9	6.1	6.1	6.3	6.2
Sussex	---	---	---	---	2.7	2.5	2.7	3.4	4.1	4.7	5.0	4.9	5.1	5.3	4.7	4.8	5.1
Dementia																	
Delaware	4.2	4.7	5.3	5.7	5.6	5.9	6.4	5.8	6.5	7.1	8.5	9.4	10.6	12.2	16.2	19.9	24.8
Kent	---	5.0	5.6	7.2	7.0	6.9	7.4	6.8	8.5	8.8	12.6	13.9	14.6	13.2	14.4	15.4	20.7
New Castle	3.9	4.0	4.6	4.7	4.8	5.0	5.8	5.5	6.3	7.3	8.3	9.2	10.6	13.1	18.8	24.7	31.5
Sussex	4.9	6.4	7.2	7.2	6.7	7.5	7.1	5.9	5.8	5.9	6.7	7.7	8.7	9.8	12.0	12.5	13.8

Notes:

1. Rates per 100,000, adjusted to U.S. 2000 population.
2. See Appendix E for ICD-9 and ICD-10 cause of death codes.
3. "—" indicates rate does not meet standards of reliability or precision; based on fewer than 20 deaths in the numerator.

Source:

Delaware Health Statistics Center

AADR_TRND(2)

TABLE F-32
 FIVE-YEAR AGE-ADJUSTED MORTALITY RATES FOR SELECTED LEADING CAUSES OF DEATH BY RACE AND SEX
 DELAWARE, 1988-2008

Cause of Death/ Race-Sex	1988 -1992	1989 -1993	1990 -1994	1991 -1995	1992 -1996	1993 -1997	1994 -1998	1995 -1999	1996 -2000	1997 -2001	1998 -2002	1999 -2003	2000 -2004	2001 -2005	2002 -2006	2003 -2007	2004 -2008
Diseases of the Heart																	
White	340.7	326.1	317.0	309.1	301.5	296.8	286.5	278.6	269.7	261.3	251.0	245.4	236.3	228.9	216.9	208.4	196.3
Male	422.6	408.5	399.2	389.0	382.2	378.2	363.3	348.7	340.8	327.8	311.4	303.0	294.0	282.8	268.8	261.6	248.6
Female	282.2	268.2	258.6	252.3	244.3	237.5	229.2	225.8	215.6	209.9	204.4	200.3	191.2	186.5	176.2	166.6	156.1
Black	385.2	364.1	350.5	340.8	339.0	330.7	329.4	321.5	310.5	303.5	292.7	292.9	291.8	285.7	271.0	261.8	236.4
Male	480.6	444.3	423.9	410.6	415.5	402.3	404.5	393.2	377.4	361.3	350.8	350.3	353.8	337.8	327.9	316.1	286.0
Female	319.4	305.5	297.6	287.2	284.1	279.8	276.7	271.0	263.6	261.5	251.3	252.6	247.1	247.4	229.2	219.4	198.7
Malignant Neoplasms																	
White	230.6	230.0	232.0	229.7	228.4	225.6	222.9	219.7	213.8	212.1	205.8	200.5	197.9	197.0	190.7	190.5	189.9
Male	299.0	298.3	298.9	293.5	294.1	289.0	282.3	275.3	264.4	258.7	252.3	246.6	244.8	243.7	236.5	232.3	230.6
Female	190.7	190.0	190.6	190.0	188.2	186.5	186.1	185.8	182.2	182.2	175.3	170.1	166.6	165.6	159.8	162.1	162.0
Black	335.5	343.3	332.7	328.2	328.1	326.6	306.3	302.7	283.7	265.1	249.9	249.9	235.9	233.7	227.1	218.5	208.1
Male	485.0	506.6	480.2	473.3	468.0	449.2	408.4	406.7	369.8	339.8	329.0	327.6	302.4	302.9	292.3	276.2	258.1
Female	243.9	244.4	244.6	240.7	245.8	253.0	246.9	243.1	234.2	221.6	205.3	203.6	194.3	190.0	184.7	180.5	174.5
Cerebrovascular Diseases																	
White	55.5	55.2	54.1	52.5	50.1	49.2	48.7	48.0	49.1	49.2	49.1	48.6	46.2	43.3	41.8	38.9	36.5
Male	56.6	56.2	55.9	54.6	52.5	52.0	51.6	50.0	50.5	51.9	50.7	50.2	48.6	47.1	42.6	38.8	35.5
Female	54.4	54.3	52.2	50.3	47.8	46.8	46.0	45.8	47.2	46.6	47.3	46.9	44.4	41.0	41.1	38.4	36.7
Black	82.3	83.8	83.3	84.3	81.1	77.5	75.2	71.0	70.4	68.0	69.0	65.6	65.6	62.9	59.5	58.7	56.6
Male	94.2	92.2	93.9	90.6	92.6	84.7	87.5	80.5	77.8	66.2	66.4	62.6	58.6	60.0	62.0	64.7	64.3
Female	73.2	76.5	75.7	79.4	72.7	71.5	65.6	62.7	64.1	66.7	67.6	65.3	67.2	62.8	57.0	54.3	51.3
Chronic Lower Respiratory Diseases																	
White	38.2	40.0	41.1	41.1	41.6	41.9	42.1	42.5	43.5	42.6	42.9	42.0	41.1	42.2	41.9	41.2	42.8
Male	52.8	51.4	52.5	52.8	53.6	53.5	55.6	55.5	54.4	52.1	50.9	47.5	45.8	46.6	45.4	44.9	47.8
Female	30.7	34.4	35.5	35.4	35.8	36.8	36.0	36.5	38.2	37.9	38.8	39.2	38.4	39.4	39.7	38.6	39.1
Black	31.3	32.2	29.9	30.3	30.8	31.6	33.0	34.4	35.4	35.4	34.6	33.4	33.6	31.4	31.6	31.5	33.4
Male	53.8	55.9	54.9	54.1	53.6	50.2	44.3	48.7	50.9	50.4	52.3	50.9	49.1	45.0	46.2	45.2	50.0
Female	16.2	17.1	14.1	15.4	17.0	20.2	25.3	26.0	25.7	25.7	23.6	22.0	23.3	23.0	23.1	23.6	24.4
Diabetes mellitus																	
White	27.0	27.4	25.8	24.7	24.6	24.1	24.5	23.8	23.2	23.4	22.6	22.3	22.1	22.7	21.4	20.7	19.6
Male	26.3	26.6	26.2	25.9	26.5	25.6	26.2	26.6	25.9	25.6	25.9	25.7	25.6	26.3	25.5	25.4	23.9
Female	27.1	27.5	25.1	23.4	23.0	23.0	23.2	21.9	21.3	21.7	20.2	19.6	19.5	20.1	18.5	17.4	16.5
Black	67.4	71.1	63.5	64.5	62.4	56.4	57.5	58.6	54.9	52.5	53.3	49.9	50.4	49.4	46.0	45.5	43.2
Male	56.9	57.8	52.5	55.1	58.4	55.0	62.3	62.4	58.8	58.9	61.2	53.6	54.7	52.9	49.3	48.2	49.3
Female	73.7	78.7	69.8	69.6	64.5	57.1	55.7	57.0	53.7	49.5	49.4	47.5	48.0	47.3	44.5	43.7	39.1
Influenza and pneumonia																	
White	32.5	32.5	33.2	32.9	32.1	31.3	32.6	30.5	30.3	29.1	26.6	22.5	21.3	18.8	16.9	15.0	14.7
Male	46.9	46.1	46.4	44.6	42.3	38.9	41.7	38.6	38.1	36.2	33.1	26.9	26.1	22.6	20.9	18.5	17.8
Female	25.5	26.2	27.0	27.1	26.8	27.0	27.6	25.8	25.8	25.0	22.8	19.6	18.4	16.3	14.4	12.9	12.7
Black	37.3	39.1	36.9	38.2	40.4	37.8	35.0	31.7	29.9	25.3	22.7	19.8	19.9	17.8	16.9	15.2	14.9
Male	55.2	56.4	53.9	56.9	62.6	62.8	56.0	46.6	44.9	38.7	32.3	28.1	31.0	27.6	25.2	23.5	24.0
Female	28.1	30.4	28.6	29.6	29.5	25.6	24.0	23.1	21.5	17.3	16.6	14.5	13.8	12.1	12.4	11.1	10.5

TABLE F-32 (continued)

Cause of Death/ Race-Sex	1988 -1992	1989 -1993	1990 -1994	1991 -1995	1992 -1996	1993 -1997	1994 -1998	1995 -1999	1996 -2000	1997 -2001	1998 -2002	1999 -2003	2000 -2004	2001 -2005	2002 -2006	2003 -2007	2004 -2008
Alzheimer's Disease																	
White	6.5	6.9	7.6	7.4	7.6	8.0	8.2	9.8	11.5	13.8	15.3	17.1	17.4	18.5	19.0	19.7	20.2
Male	8.3	8.0	8.5	8.1	7.7	6.9	6.9	8.9	10.0	12.3	14.2	15.1	14.9	15.7	16.3	17.1	17.5
Female	5.9	6.5	7.2	7.1	7.5	8.4	8.8	10.3	12.1	14.5	15.8	18.1	18.9	20.1	20.3	21.0	21.5
Black	---	---	---	---	---	---	---	5.8	8.2	8.7	9.6	12.5	13.8	14.0	14.1	15.3	14.1
Male	---	---	---	---	---	---	---	---	---	---	---	---	13.8	---	---	12.9	12.3
Female	---	---	---	---	---	---	---	---	8.1	8.2	8.7	11.9	13.4	15.3	15.2	16.0	14.6
Nephritis, nephrotic syndrome, and nephrosis																	
White	12.0	11.5	11.6	11.7	12.1	11.4	11.5	11.3	11.2	11.0	11.9	12.2	12.6	12.5	13.0	13.1	13.7
Male	16.1	14.9	15.7	15.5	15.9	15.1	15.7	15.2	14.9	15.2	16.6	16.4	17.4	17.5	17.7	17.6	18.0
Female	10.0	10.1	9.7	9.8	10.5	9.5	9.3	9.3	9.2	8.7	9.1	9.7	9.7	9.5	9.8	10.1	10.8
Black	33.4	29.8	30.6	27.4	24.9	24.7	28.1	28.4	30.9	31.5	30.1	27.6	26.6	26.7	27.7	30.3	31.6
Male	35.2	32.6	35.2	31.7	29.7	27.5	30.8	32.7	38.6	35.5	38.4	36.7	35.7	34.3	38.4	40.5	41.3
Female	30.8	27.4	27.1	24.0	21.4	22.6	26.1	25.9	25.9	28.7	25.3	22.0	21.4	22.9	21.6	24.5	26.0
Septicemia																	
White	11.5	11.3	12.0	12.5	13.1	13.3	13.7	13.0	13.8	13.9	14.4	14.3	14.6	13.8	13.0	12.1	12.1
Male	14.7	13.2	13.0	13.7	13.5	13.8	15.6	15.3	15.9	16.0	16.7	15.8	16.4	15.5	14.9	14.3	13.9
Female	9.5	10.2	11.3	11.7	12.8	12.9	12.5	11.5	12.6	12.9	13.4	13.5	13.6	12.8	11.9	10.6	10.9
Black	16.8	15.5	18.6	21.1	21.9	23.7	25.2	25.7	25.8	28.5	27.7	28.4	25.1	23.9	22.6	21.4	19.5
Male	14.4	15.2	24.5	26.3	29.1	31.7	33.3	30.1	32.5	33.7	31.4	33.1	27.4	24.4	22.6	21.1	18.7
Female	16.8	14.5	15.9	19.1	19.0	20.5	22.0	23.7	22.0	25.4	25.9	25.6	23.3	24.0	22.6	21.5	19.9
Intentional self-harm																	
White	14.3	14.2	13.4	13.2	13.5	13.4	12.6	12.7	12.7	12.8	12.2	12.9	12.8	12.5	11.9	12.3	12.3
Male	22.8	23.4	21.5	21.0	22.3	22.7	21.4	21.9	21.9	21.8	21.0	21.6	20.9	20.7	19.6	19.5	19.8
Female	6.8	6.4	6.3	6.4	5.9	5.1	4.5	4.3	4.4	4.7	4.3	5.1	5.5	5.0	4.7	5.6	5.2
Black	6.2	5.2	5.1	5.5	5.8	5.8	5.4	4.9	4.0	4.8	5.0	4.8	5.5	5.9	5.2	4.5	5.4
Male	12.0	9.6	10.1	11.6	12.4	11.7	11.2	9.7	7.7	8.9	9.8	9.1	9.8	10.5	9.7	8.1	9.5
Female	---	---	---	---	---	---	---	---	---	---	---	---	---	---	---	---	---
Chronic liver disease and cirrhosis																	
White	10.9	10.8	10.0	9.1	9.4	9.1	8.9	9.1	9.5	9.0	9.5	10.0	9.9	9.7	9.6	8.9	8.5
Male	16.5	16.4	14.9	14.2	13.7	12.5	12.2	13.0	12.6	11.8	11.6	12.0	11.5	11.7	12.3	11.7	11.6
Female	5.8	5.9	5.7	4.8	5.7	6.0	5.9	5.7	6.7	6.5	7.6	8.1	8.5	8.0	7.1	6.5	5.7
Black	13.3	14.7	14.2	14.7	13.5	12.6	10.7	10.0	8.5	9.0	8.9	9.3	9.1	8.0	7.2	6.4	6.3
Male	23.1	26.0	25.1	25.9	22.2	19.2	15.8	13.1	12.0	12.1	12.6	13.7	14.2	11.8	12.0	10.7	10.8
Female	---	---	---	---	---	---	---	7.1	---	6.3	---	5.7	---	---	---	---	---
Assault (Homicide)																	
White	3.7	3.9	3.3	3.7	3.6	3.5	3.2	3.1	2.4	2.2	2.2	2.0	2.1	2.6	2.5	2.4	2.9
Male	4.4	5.0	4.2	4.6	4.1	4.2	3.9	3.7	2.8	2.7	2.6	2.5	2.5	3.5	3.5	3.4	4.1
Female	3.0	2.9	2.4	3.0	3.2	2.8	2.6	2.4	1.9	1.7	1.8	1.6	1.6	1.7	1.5	1.5	1.7
Black	15.0	14.4	13.7	11.7	12.8	12.3	12.4	11.7	11.6	8.9	8.9	8.8	9.6	11.1	13.4	14.1	16.3
Male	21.7	21.5	20.3	18.2	20.1	19.8	18.9	18.8	18.1	14.3	14.8	15.6	16.6	19.8	24.2	25.6	30.1
Female	9.0	8.0	7.7	6.0	6.4	5.8	6.5	5.4	5.7	---	---	---	---	---	---	---	---

TABLE F-32 (continued)

Cause of Death/ Race-Sex	1988 -1992	1989 -1993	1990 -1994	1991 -1995	1992 -1996	1993 -1997	1994 -1998	1995 -1999	1996 -2000	1997 -2001	1998 -2002	1999 -2003	2000 -2004	2001 -2005	2002 -2006	2003 -2007	2004 -2008
Certain conditions originating in the perinatal period																	
White	5.9	5.2	4.5	4.0	3.3	3.2	3.2	3.3	4.2	5.1	5.8	6.1	6.1	5.5	5.0	4.6	4.4
Male	6.2	5.6	4.7	4.2	3.6	3.3	3.1	3.4	4.7	5.7	6.2	6.8	6.4	5.7	5.2	5.2	5.0
Female	5.5	4.8	4.3	3.8	2.9	3.0	3.2	3.1	3.7	4.5	5.3	5.4	5.7	5.3	4.7	4.1	3.8
Black	18.7	18.0	15.1	12.9	12.0	11.7	11.9	13.9	14.6	16.6	16.4	16.0	15.0	16.3	14.9	14.6	14.3
Male	18.5	19.8	17.9	15.6	14.9	15.7	14.0	16.4	16.7	18.7	18.8	18.7	16.9	19.0	16.7	15.7	14.9
Female	18.9	16.0	12.2	10.1	9.0	7.5	9.7	11.4	12.4	14.4	13.9	13.3	13.0	13.7	13.1	13.5	13.6
Congenital malformations																	
White	4.8	4.7	4.3	4.4	4.5	4.6	4.2	4.2	4.0	3.7	3.3	3.2	3.3	3.0	3.0	2.8	2.7
Male	5.0	4.9	4.8	4.9	4.9	4.7	4.2	4.3	4.2	3.7	3.5	3.9	3.6	3.3	3.2	2.9	2.6
Female	4.6	4.7	3.8	3.9	4.2	4.6	4.3	4.2	3.9	3.7	3.1	2.7	2.9	2.7	2.7	2.6	2.8
Black	6.4	5.1	5.1	3.9	3.1	3.2	3.4	3.4	3.5	3.9	4.0	3.6	3.7	3.5	3.3	2.9	3.0
Male	5.0	4.9	4.8	4.9	4.9	4.7	4.2	4.3	4.2	3.7	3.5	3.9	3.6	3.3	3.2	2.9	2.6
Female	4.6	4.7	3.8	3.9	4.2	4.6	4.3	4.2	3.9	3.7	3.1	2.7	2.9	2.7	2.7	2.6	2.8
Human immunodeficiency virus (HIV)																	
White	4.5	5.6	6.6	7.7	8.1	7.2	5.9	4.7	3.0	2.0	2.2	2.6	2.5	2.3	2.3	2.1	1.9
Male	8.5	10.4	12.1	13.7	14.2	12.8	10.6	8.4	5.3	3.5	3.7	4.3	3.8	3.6	3.5	3.4	3.0
Female	---	---	---	1.8	2.0	1.7	---	---	---	---	---	---	---	---	---	---	---
Black	19.2	26.7	37.7	48.8	57.7	59.3	55.5	48.8	41.8	36.0	35.0	35.7	34.7	33.5	30.9	28.9	26.1
Male	35.1	46.4	65.1	83.0	97.0	97.3	93.3	80.3	66.6	56.1	55.0	53.8	51.5	50.2	45.3	39.5	32.5
Female	---	10.1	14.7	20.0	24.4	27.1	23.6	22.0	20.8	19.0	18.2	20.7	20.8	19.8	19.1	20.4	21.3
Accidents (unintentional injuries)																	
White	35.8	34.0	34.6	34.1	33.9	34.8	36.2	36.1	37.2	38.1	37.3	37.0	37.2	37.1	37.7	37.9	39.3
Male	50.5	48.0	51.7	51.3	49.8	50.2	51.1	48.4	50.0	50.7	50.3	51.0	51.1	51.4	52.7	53.9	55.0
Female	23.3	21.8	20.1	18.8	19.6	20.8	22.3	24.2	25.4	26.4	25.5	24.1	24.5	23.9	23.8	23.0	24.7
Black	41.6	41.7	43.8	46.3	44.9	44.5	39.9	36.5	34.0	35.9	36.9	36.6	34.5	31.4	29.1	26.0	24.1
Male	68.6	67.0	70.8	74.8	71.5	68.2	60.9	56.7	52.8	52.3	55.7	55.0	49.3	46.0	43.4	37.6	34.2
Female	21.7	23.4	24.3	26.8	26.2	27.8	24.0	21.4	18.5	21.8	20.9	21.3	21.5	19.2	17.3	16.3	15.3
Essential (primary) hypertension and hypertensive renal disease																	
White	2.7	2.7	2.7	2.5	2.8	2.9	3.5	3.5	4.2	4.4	5.0	5.1	5.7	6.0	5.7	5.2	4.7
Male	2.7	2.5	2.3	2.4	2.5	2.9	3.7	3.8	4.3	4.4	4.7	5.0	5.3	5.6	5.5	4.8	4.4
Female	2.6	2.7	2.9	2.7	3.0	2.9	3.4	3.3	4.0	4.3	5.0	4.9	5.8	6.1	5.7	5.3	4.8
Black	9.5	10.1	10.0	10.1	10.7	9.7	9.9	9.8	9.9	10.4	11.2	12.0	15.1	16.0	14.8	13.9	14.2
Male	---	---	---	---	---	---	---	12.7	12.9	13.0	11.7	13.9	19.3	19.7	18.8	19.5	17.6
Female	---	10.7	10.7	11.2	11.2	9.7	9.4	8.4	8.1	9.1	10.7	10.8	12.8	14.0	12.1	10.1	11.5
Aortic aneurysm and dissection																	
White	9.6	9.0	8.6	8.4	7.0	7.0	6.7	6.5	6.5	6.8	6.4	6.7	6.2	5.8	5.0	4.4	3.6
Male	15.7	15.2	14.1	13.6	11.3	11.3	10.8	10.6	10.4	11.3	9.9	9.6	8.8	8.3	6.9	6.2	5.5
Female	5.6	5.0	5.0	5.0	4.3	4.3	4.1	3.9	4.0	3.8	4.1	4.8	4.4	4.0	3.6	2.9	2.3
Black	7.7	8.3	6.7	8.4	7.5	6.6	6.1	5.6	5.0	5.0	5.5	5.9	6.7	6.3	5.2	5.0	4.1
Male	---	---	---	---	---	---	---	---	---	---	---	---	---	---	---	---	---
Female	---	---	---	---	---	---	---	---	---	---	---	---	6.8	6.4	---	---	---

TABLE F-32 (continued)

Cause of Death/ Race-Sex	1988 -1992	1989 -1993	1990 -1994	1991 -1995	1992 -1996	1993 -1997	1994 -1998	1995 -1999	1996 -2000	1997 -2001	1998 -2002	1999 -2003	2000 -2004	2001 -2005	2002 -2006	2003 -2007	2004 -2008
Pneumonitis due to solids and liquids																	
White	4.1	4.3	4.0	4.1	4.3	5.0	5.4	6.8	7.4	8.5	8.8	9.3	8.5	7.8	6.8	6.1	5.4
Male	5.3	5.2	5.3	5.8	5.8	7.3	8.8	10.1	10.5	11.8	11.5	11.6	10.5	9.5	8.0	7.5	6.4
Female	3.3	3.8	3.3	3.3	3.6	4.0	3.8	5.1	5.8	6.7	7.3	8.0	7.4	6.8	5.9	5.2	4.6
Black	---	---	---	---	6.0	6.4	7.4	8.8	10.4	11.2	10.3	11.5	10.3	10.4	8.8	7.9	5.5
Male	---	---	---	---	---	---	---	---	15.4	19.6	17.7	19.5	18.0	17.4	14.7	12.5	---
Female	---	---	---	---	---	---	---	---	---	---	---	6.6	---	6.5	---	---	---
Other diseases of respiratory system																	
White	5.9	6.4	6.7	7.1	7.3	7.6	8.1	8.2	8.5	8.5	8.8	8.5	8.8	8.6	9.1	8.9	9.0
Male	7.9	8.5	10.2	9.6	10.3	10.4	10.7	10.0	10.6	10.1	9.8	9.7	10.0	10.0	11.2	11.0	10.3
Female	4.6	5.1	4.6	5.4	5.5	5.7	6.2	6.6	6.9	7.3	8.1	7.8	8.1	7.7	7.7	7.4	7.9
Black	8.7	9.4	8.7	7.6	7.4	7.6	6.7	6.1	6.9	7.1	7.8	7.2	7.3	6.9	6.8	7.2	9.1
Male	---	---	12.8	11.6	---	---	---	---	---	---	---	---	8.9	10.2	9.4	9.5	11.2
Female	---	---	---	---	---	---	---	---	7.9	8.1	7.6	6.4	6.2	---	5.3	5.8	7.8
Parkinson's disease																	
White	3.6	3.5	3.7	3.6	3.7	3.6	3.9	4.3	4.9	5.5	6.0	5.9	5.9	6.0	5.8	6.0	6.1
Male	6.1	6.1	7.1	6.5	6.3	5.9	6.1	6.0	6.7	8.0	8.5	8.7	8.9	9.2	8.8	9.0	8.8
Female	2.4	2.0	1.9	2.0	2.2	2.3	2.8	3.4	3.9	4.2	4.6	4.3	4.2	4.4	4.1	4.2	4.4
Black	---	---	---	---	---	---	---	---	---	---	---	---	---	---	---	---	---
Male	---	---	---	---	---	---	---	---	---	---	---	---	---	---	---	---	---
Female	---	---	---	---	---	---	---	---	---	---	---	---	---	---	---	---	---
Dementia																	
White	4.4	5.1	5.6	6.0	5.8	6.2	6.6	6.1	6.6	7.3	8.5	9.4	10.1	11.8	15.5	18.8	23.9
Male	4.7	5.7	6.5	7.5	7.1	7.3	7.5	7.0	7.8	7.8	7.9	8.3	8.7	9.4	12.9	15.7	20.1
Female	4.3	4.8	5.1	5.2	5.2	5.6	6.0	5.6	6.1	7.1	8.9	10.1	10.9	13.0	16.9	20.4	25.8
Black	---	---	---	---	---	---	---	---	6.0	5.7	8.6	10.2	15.1	15.9	22.5	29.3	33.5
Male	---	---	---	---	---	---	---	---	---	---	18.7	17.9	21.9	21.6	28.4	28.0	33.9
Female	---	---	---	---	---	---	---	---	---	---	---	---	12.3	13.2	19.6	29.6	33.2

AADR_TRND(3)

Notes:

1. Rates per 100,000, adjusted to U.S. 2000 population.
2. See Appendix E for ICD-9 and ICD-10 cause of death codes.
3. "---" indicates rate does not meet standards of reliability or precision; based on fewer than 20 deaths in the numerator.

Source:

Delaware Health Statistics Center