

The background of the cover is a photograph of a large, multi-story stone fortification tower. The tower is built from light-colored, rectangular stone blocks and has several dark, rectangular windows. A metal railing is visible on the top edge of the tower. The tower is situated on a grassy bank next to a body of water. In the distance, a flat landscape with some buildings and trees is visible under a blue sky with scattered white clouds.

Delaware Vital Statistics Annual Report Mortality, 2013

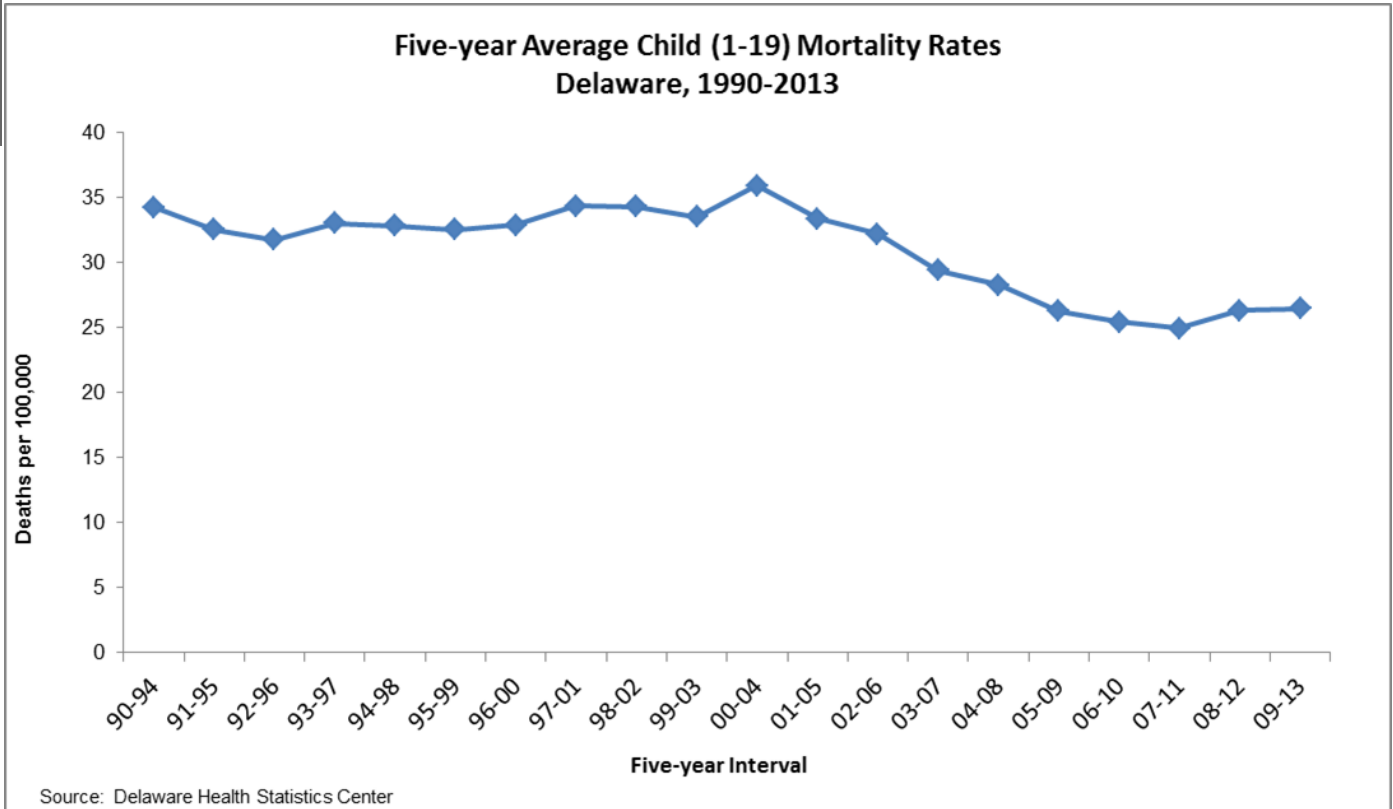
Suggested Citation:

*Delaware Health Statistics Center. Delaware Vital Statistics Annual Report, 2016.
Delaware Department of Health and Social Services, Division of Public Health: 2016.*

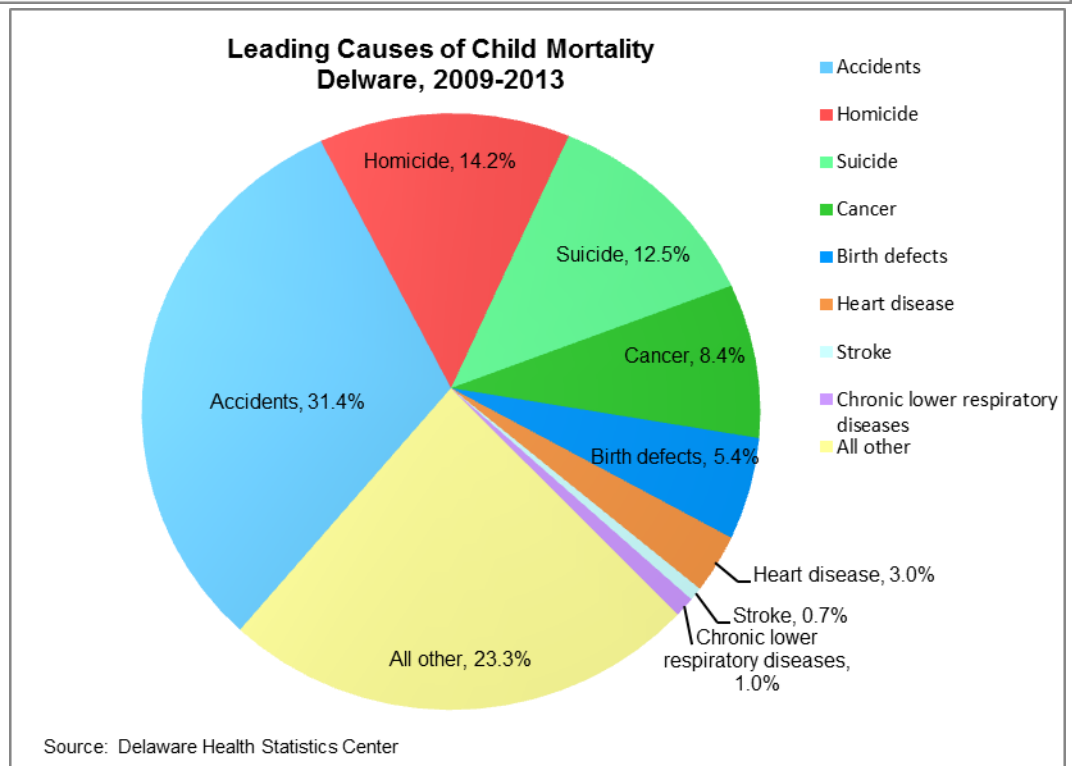
CHILD MORTALITY

From 2009 to 2013, 296 children and adolescents between the ages of 1 and 19 died in Delaware, representing 0.8 percent of the total deaths that occurred during that time. Males accounted for 63 percent of all child deaths in 2008-2013.

After small fluctuations throughout the 1990s, the mortality rate for children ages 1 to 19 began to decline. Since its peak of 36 in 2000-2004, the rate decreased 25 percent, to 27 deaths per 100,000 children.

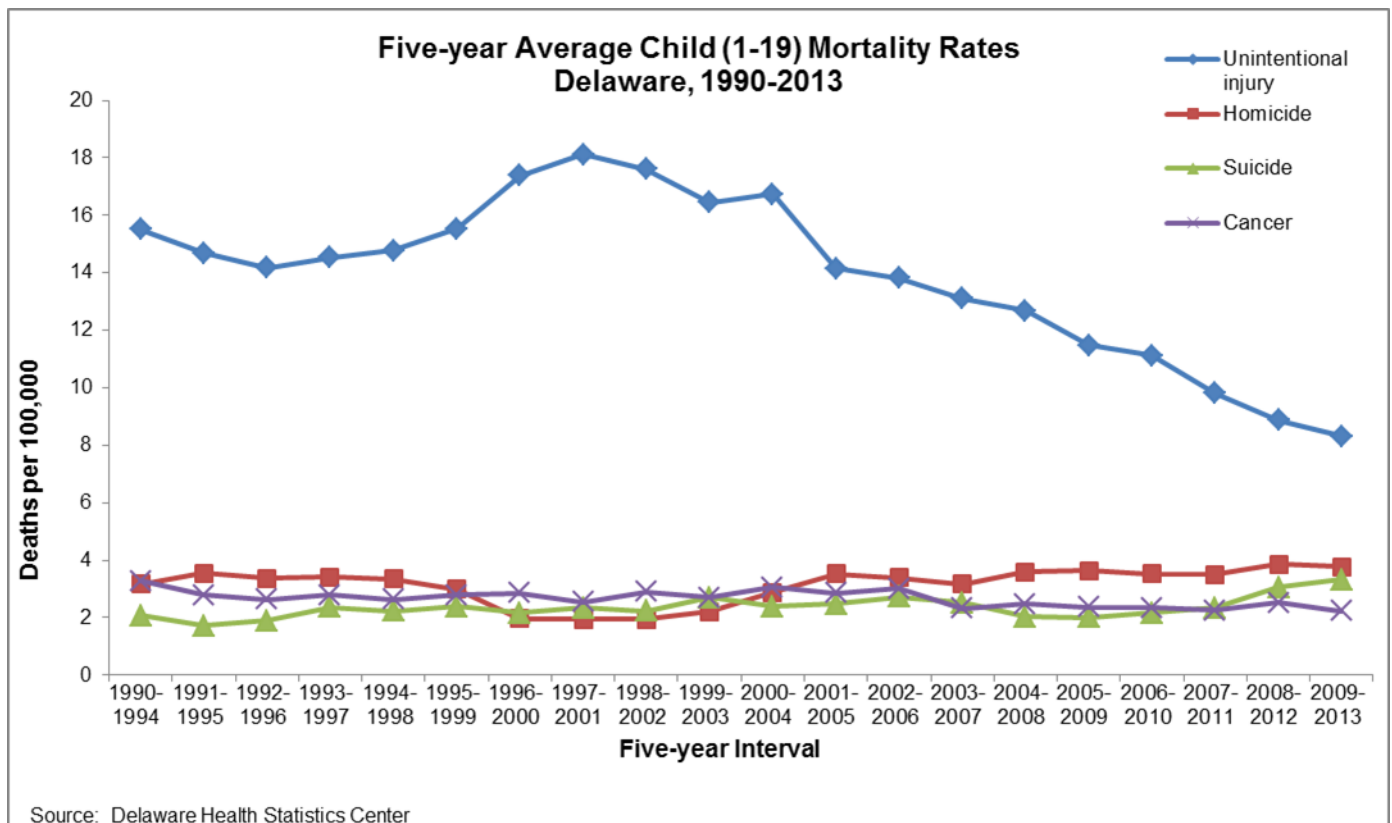


Accidents, homicide, cancer, and suicide were the four most common causes of child mortality in 2009-2013. Together, they accounted for two-thirds of all child deaths.



CHILD MORTALITY

From 2001-2005 to 2009-2013, unintentional injury mortality rates declined by 41 percent, whereas suicide mortality rates increased 32 percent. Homicide rates increased by 8 percent while cancer rates decreased 21 percent.



Detailed manner of the most common causes of child deaths in 2009-2013:

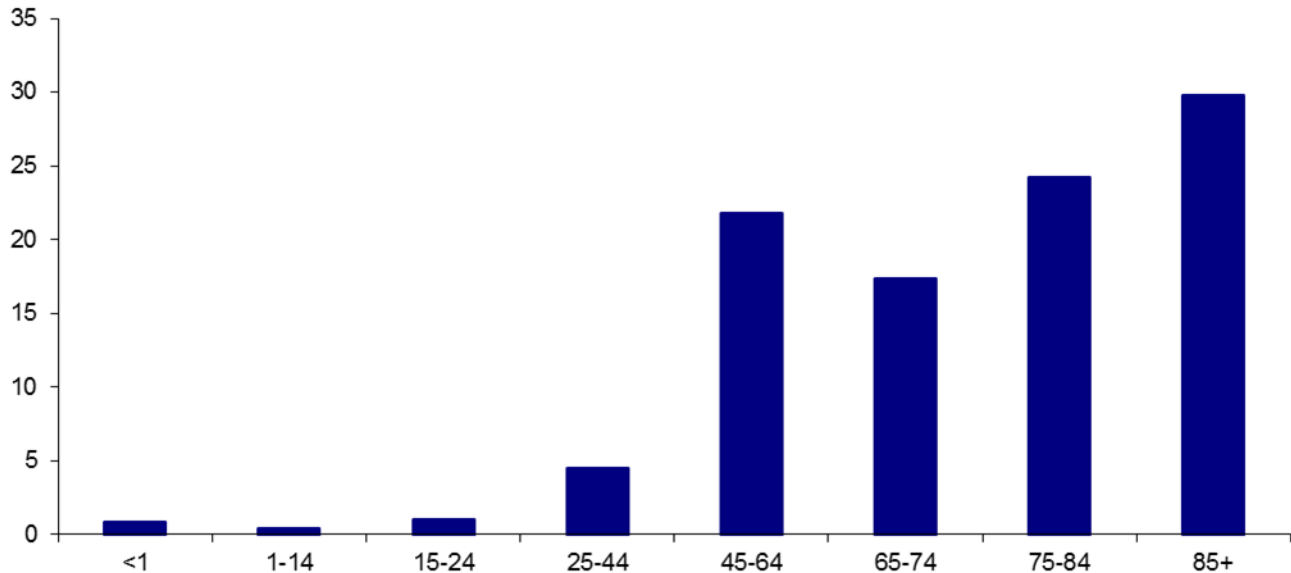
- Motor vehicle crashes accounted for 65 percent of all deaths due to unintentional injuries. The second and third most common causes of unintentional injury deaths of children were poisoning and drowning, which accounted for 11 and 6 percent of deaths, respectively.
- Firearms and fire/burning accounted for over 88 percent of all homicides, 81 and 7 percent, respectively.
- The majority of child cancer deaths were due to brain cancer (44 percent) and leukemia (16 percent).
- Suffocation, followed by firearms, were the most common methods of suicide, and accounted for 54 and 32 percent of the total suicide deaths.

MORTALITY

More Delaware residents died in 2013 than in 2012. A total of 7,967 residents died, 68 of whom were infants under the age of 1. Deaths for males were higher than females (4,031 vs 3,936). Cancer and heart disease were the most common causes of death, accounting for 47 percent of all deaths in 2013.

- Thirty percent of the Delawareans who died in 2013 were 85 or older. Deaths of those 75 and older accounted for more than half of all deaths.

**Percent of Deaths by Age
Delaware, 2013**



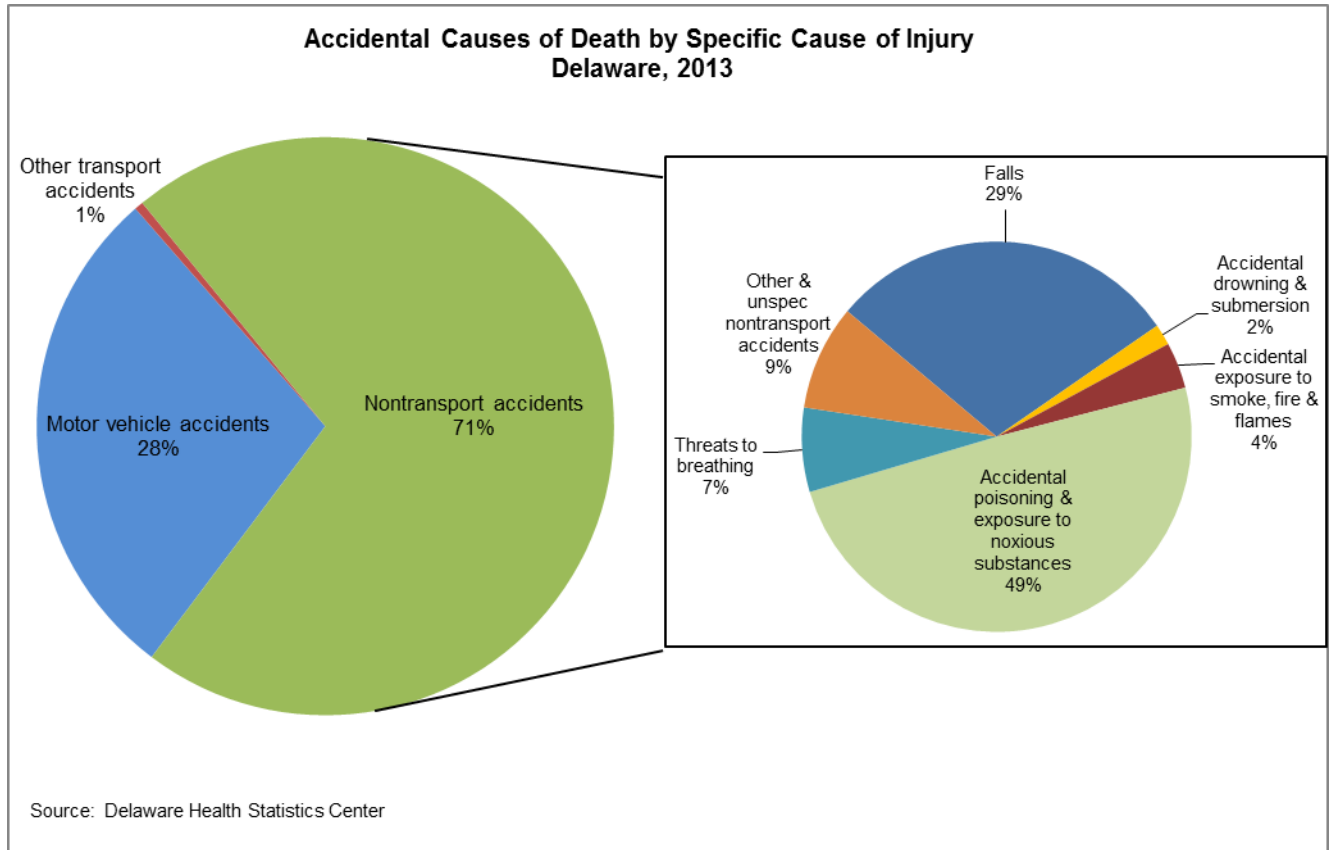
Source: Delaware Health Statistics Center

- A Delaware resident born in 2013 could expect to live an average of 78.9 years.
- Life expectancy at birth varied by race and sex; white females had the highest life expectancy (81.8) while black males had the lowest (73.5).
- In 1989, 80 percent of Delaware decedents were buried and 15 percent were cremated. By 2013, the distribution had shifted: 50 percent of decedents were buried and 45 percent were cremated.
- In 2013, the 10 leading causes of death for residents of all ages changed slightly from the top 10 in 2012. Intentional self-harm (suicide) dropped out of the top ten, shifting septicemia and influenza into the ninth and tenth leading causes of death.

Rank	Leading Cause of Death	Number
1	Malignant neoplasms	1903
2	Diseases of heart	1864
3	Chronic lower respiratory diseases	483
4	Cerebrovascular diseases	409
5	Accidents (unintentional injuries)	403
6	Diabetes mellitus	218
7	Alzheimer's disease	192
8	Nephritis, nephrotic syndrome & nephrosis	178
9	Septicemia	157
10	Influenza & pneumonia	150

MORTALITY

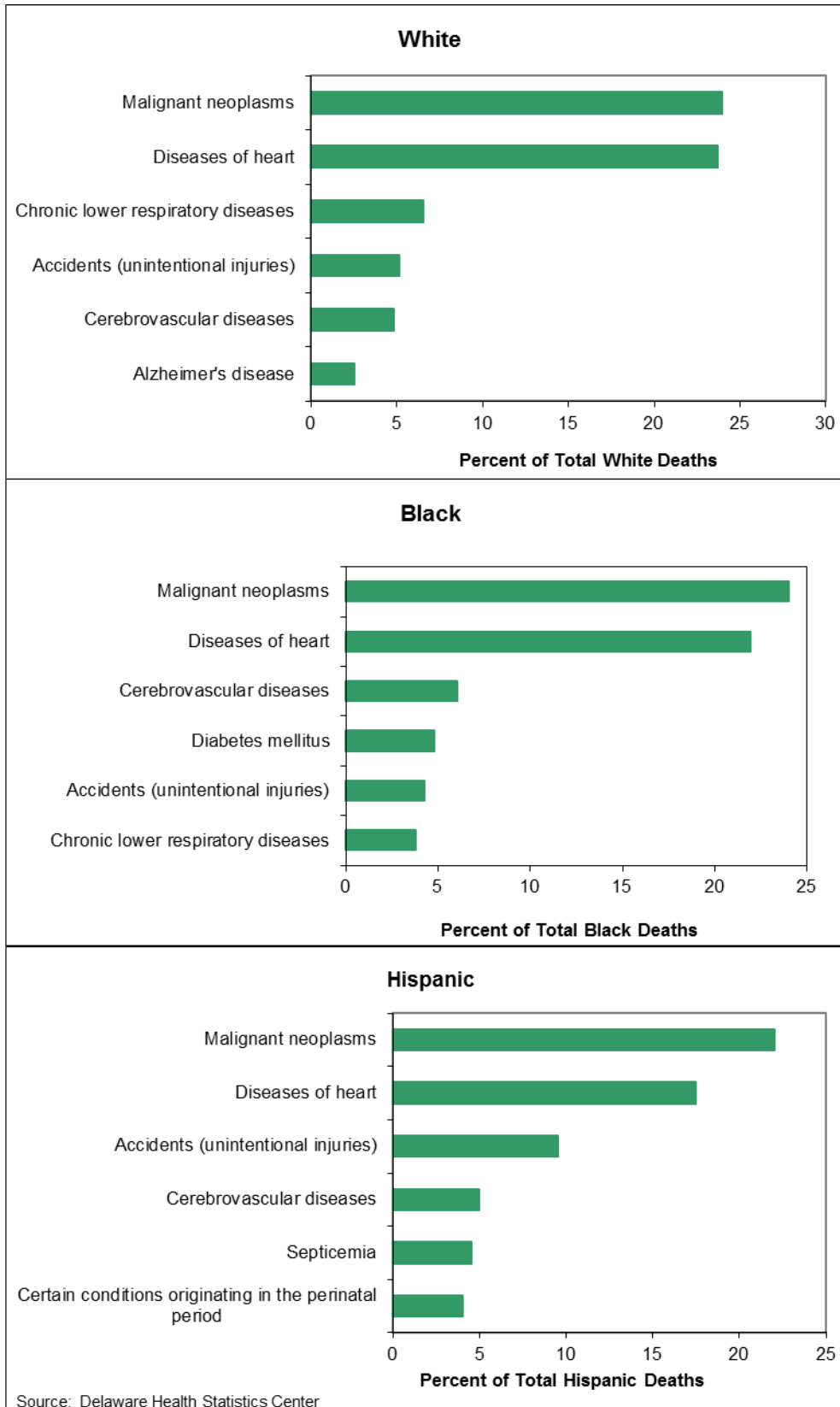
- There were 403 deaths due to unintentional injury in 2013 (5.1 percent of all deaths); 28 percent were due to motor vehicle accidents and 71 percent were due to non-transport accidents. Over one-third of the 287 non-transport accidents were caused by unintentional poisonings; the majority (87 percent) of unintentional poisonings were drug-induced poisonings.
- For the fifth year, unintentional poisonings surpassed motor vehicle injuries and became the leading cause of unintentional injury death in 2013.
 - * For all whites and black females, poisonings caused the most unintentional injuries, followed by either motor vehicle accidents or falls. For black males, motor vehicle accidents caused the greatest number of unintentional injuries.



- In 2009-2013, accidents were the number one cause of death for people 1-44 years of age, and they were responsible for 38 percent of all deaths of people 15-24 years of age. For decedents ages 15-24, accidents, homicides, and suicides were the three most frequent causes of death and accounted for nearly three-quarters of total deaths.

MORTALITY

The leading causes of death varied by race and ethnic group. In 2013, the most common causes of death for white, black, and Hispanic Delawareans were:

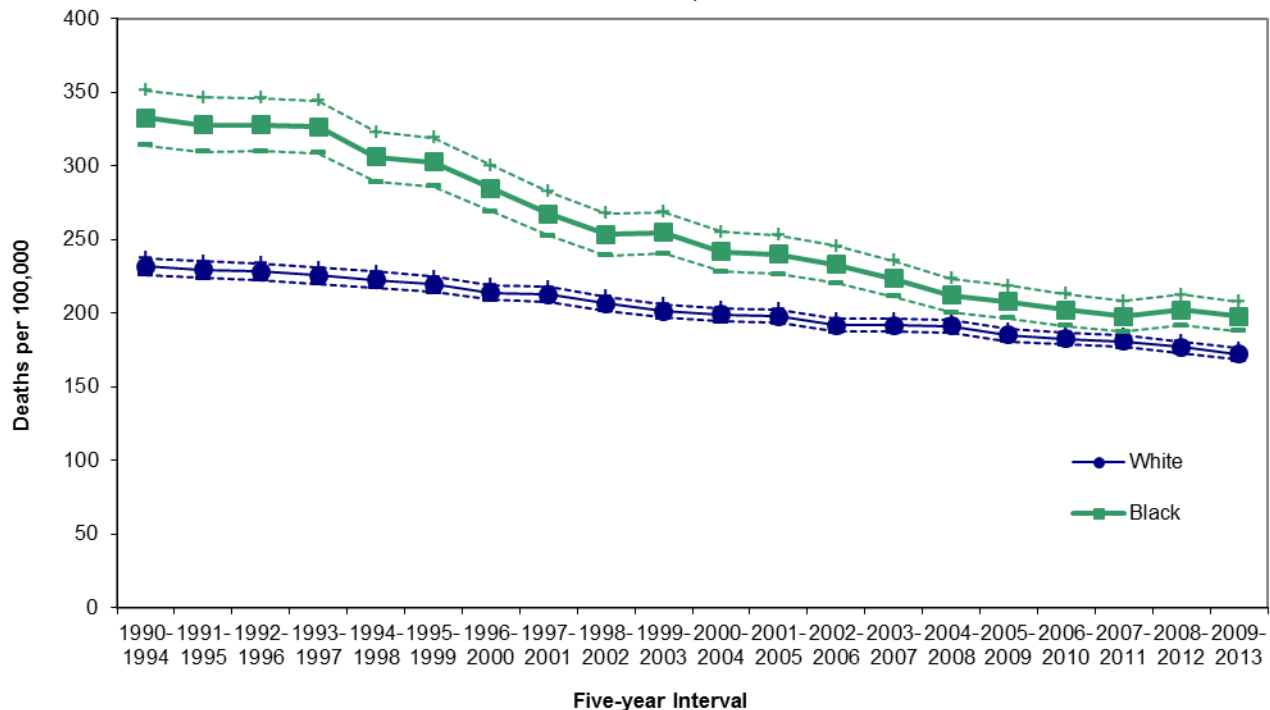


MORTALITY

Cancer mortality rates have decreased in all three counties since the early 1990s, though most recently Kent County rates decreased 4 percent. In 2009-2012, the five year age-adjusted cancer mortality rates ranged from 158.0 in Sussex County to 199.6 deaths per 100,000 population in Kent County.

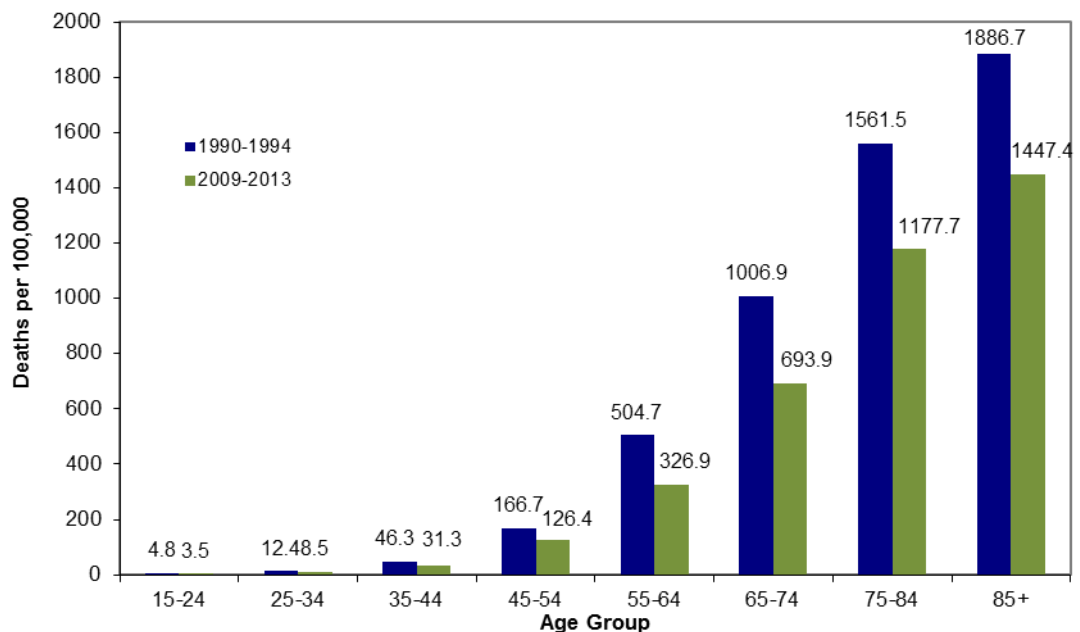
Cancer mortality rates for black and white decedents followed the same declining trend, and though the gap between black and white cancer mortality rates has narrowed, black cancer mortality rates in 2009-2013 remained higher than white rates.

**Five-year Age-Adjusted Cancer Mortality Rates by Race
Delaware, 1990-2013**



Source: Delaware Health Statistics Center

**Five-year Average Age-Specific Cancer Mortality Rates
Delaware, 1990-1994 and 2009-2013**



Source: Delaware Health Statistics Center

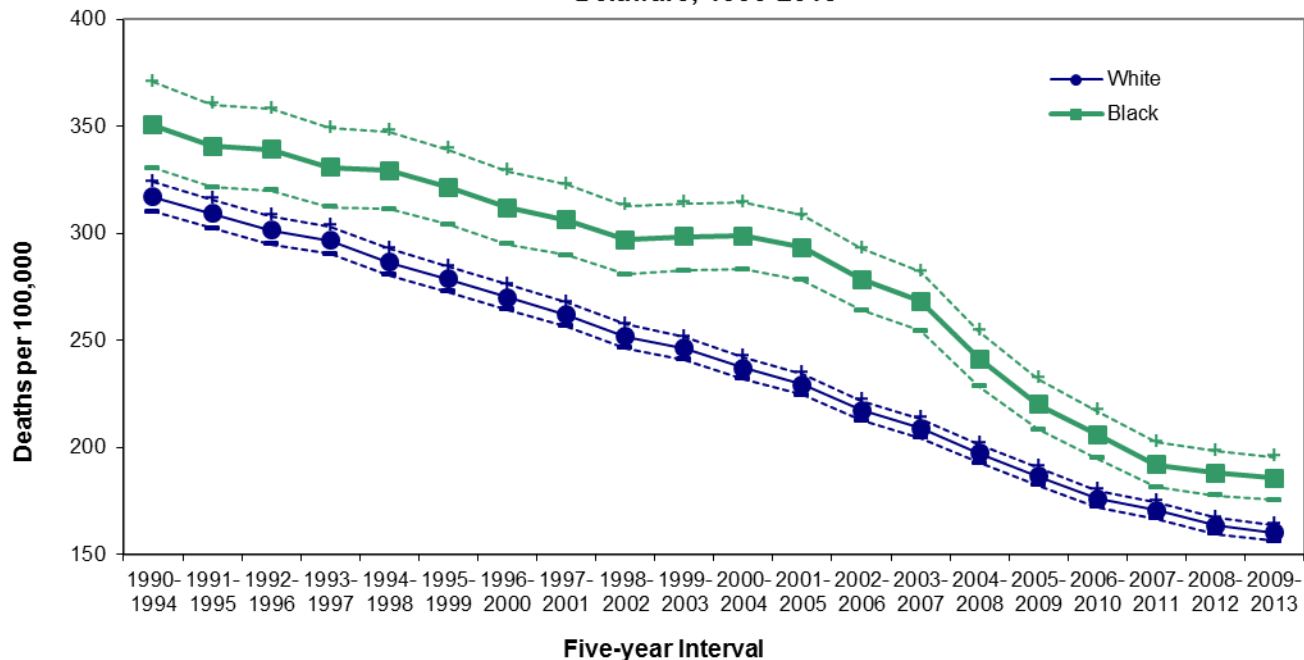
The same decreases seen in the age-adjusted cancer mortality rates were reflected in the age-specific rates as well.

Cancer mortality rates declined for all age groups between 1990-1994 and 2009-2013. The 25-34 and 55-64 age groups experienced the largest decreases.

MORTALITY

Heart disease was the second most common cause of death for both black and white Delawareans in 2009-2013. Both black and white heart disease mortality rates have declined significantly since 1990-1994, with white rates declining 49.5 percent and black rates declining 47.1 percent.

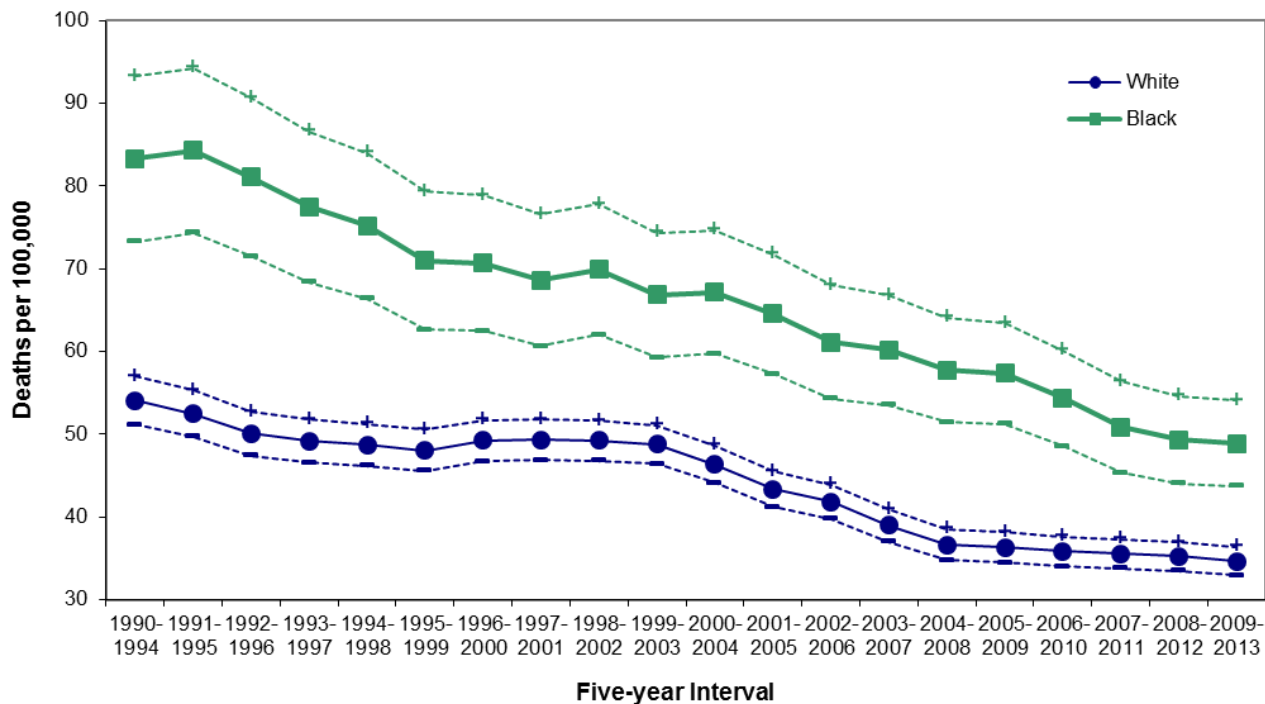
**Five-year Age-Adjusted Heart Disease Mortality Rates by Race
Delaware, 1990-2013**



Source: Delaware Health Statistics Center

Stroke mortality rates for both races continued their declining trends between 1990-1994 and 2009-2013, with rates for white and black races decreasing 36 and 49 percent, respectively. In 2009-2013, the black stroke mortality rate remained approximately 34 percent higher than white rate (48.9 versus 34.7).

**Five-year Age-Adjusted Stroke Mortality Rates by Race
Delaware, 1990-2013**

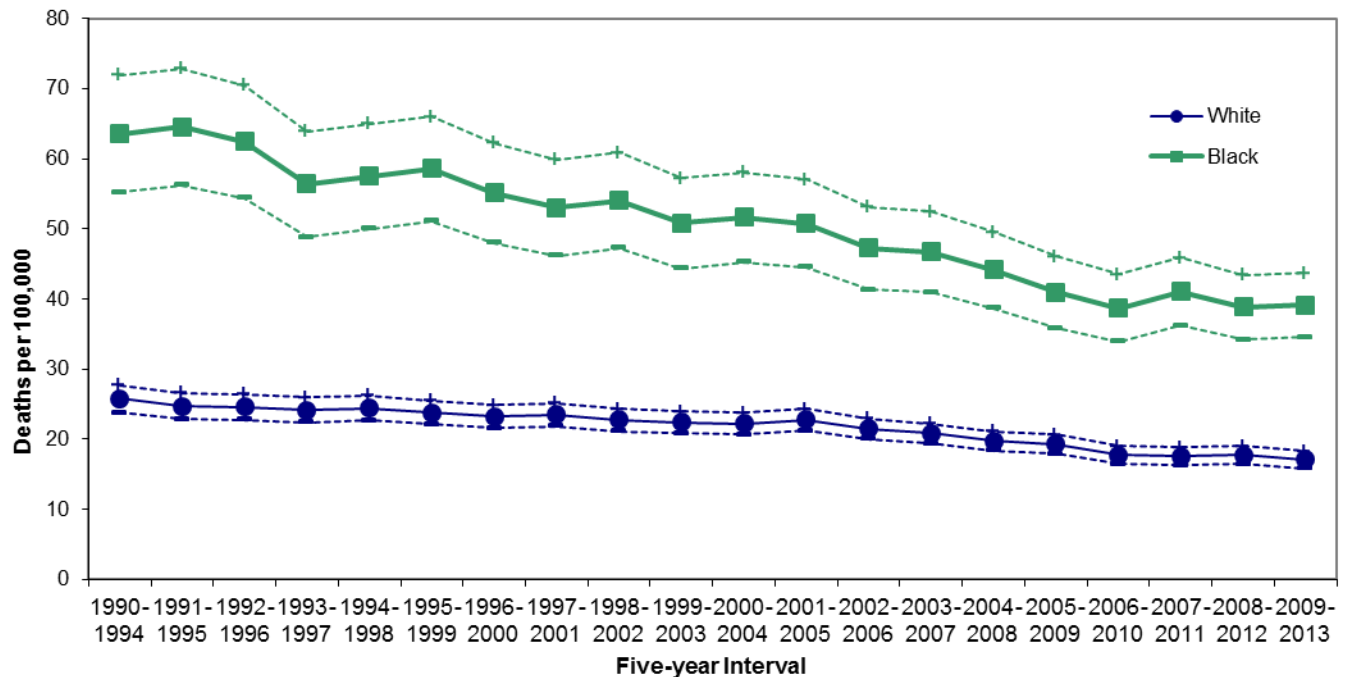


Source: Delaware Health Statistics Center

MORTALITY

Though black mortality rates for diabetes have declined 38 percent since 1990-1994, their rates were more than double that of whites in 2009-2013.

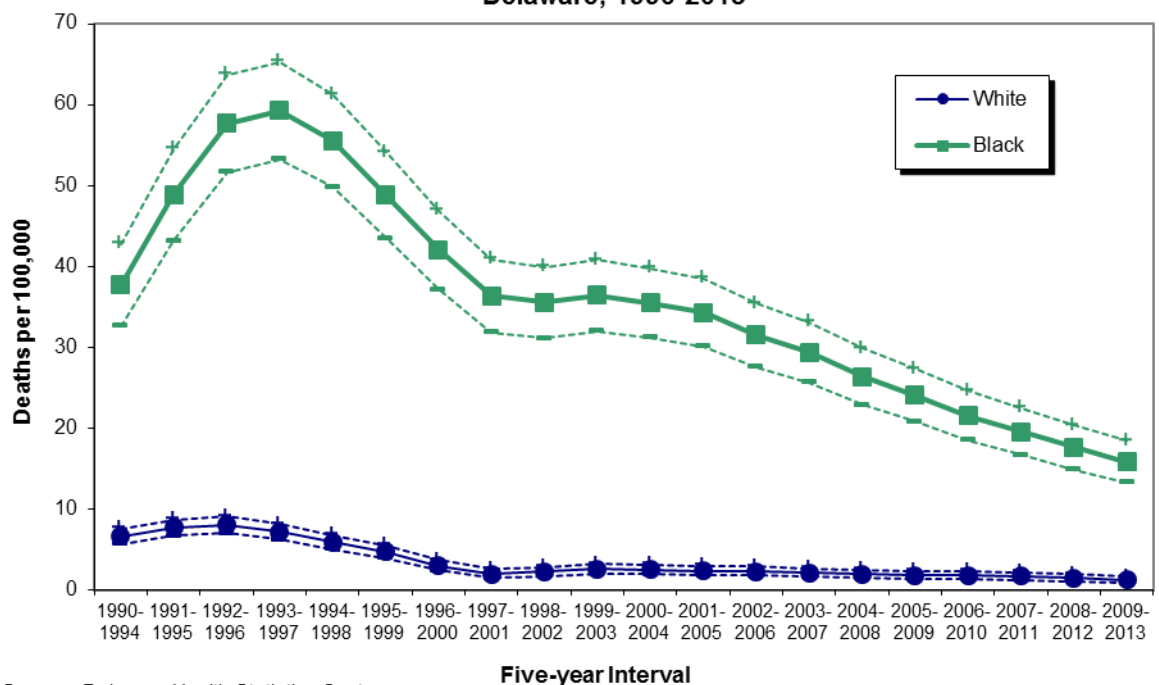
**Five-year Age-Adjusted Diabetes Mortality Rates by Race
Delaware, 1990-2013**



Source: Delaware Health Statistics Center

HIV/AIDS mortality has disproportionately affected Delaware's black population. Despite black HIV/AIDS mortality rates decreasing significantly since the 1993-1997 peak, their 2009-2013 mortality rate of 15.9 deaths per 100,000 was nearly 13 times that of whites. Though they made up only 21.9 percent of the total Delaware population in 2009-2013, blacks accounted for 78 percent of all deaths due to HIV/AIDS.

**Five-year Age-Adjusted HIV/AIDS Mortality Rates by Race
Delaware, 1990-2013**

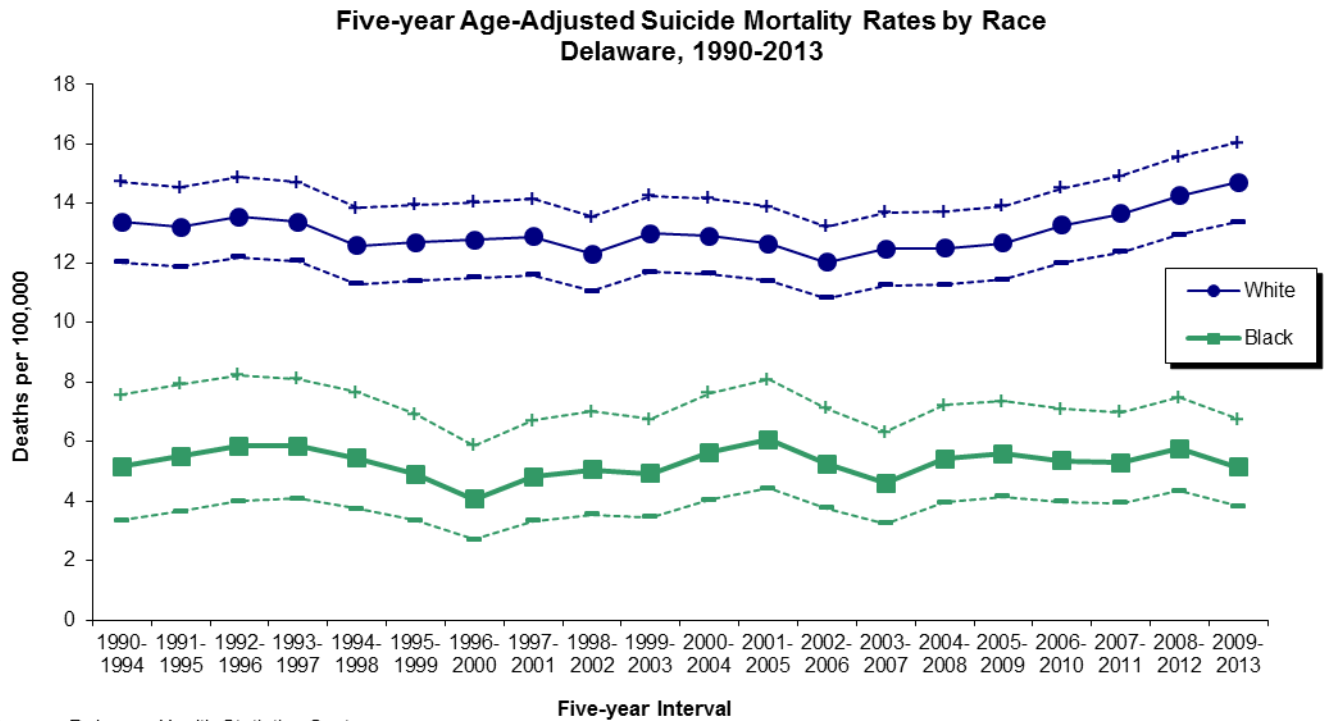


In 2009-2013, HIV was the ninth leading cause of death for black Delawareans. It ranked eighth for black males and twelfth for black females.

Source: Delaware Health Statistics Center

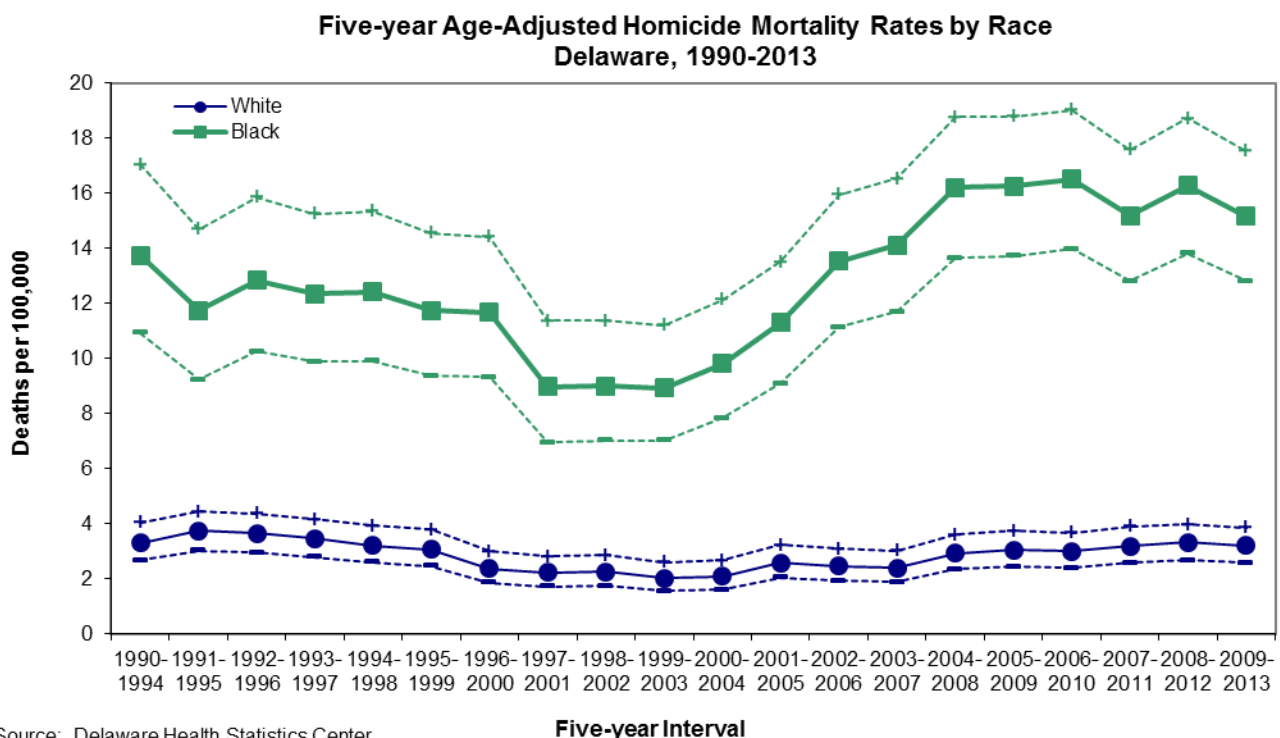
MORTALITY

Suicide mortality trends for white populations showed an increase between 1990-1994 and 2009-2013, with the white rate (14.7) more than doubling that of the black rate (5.1).



Source: Delaware Health Statistics Center

After declining throughout most of the 1990s and reaching their lowest point in 1999-2003, homicide mortality rates rose 74 percent. The majority of the increase was due to a 71 percent increase in black homicide mortality rates and a 60 percent increase in white homicide mortality rates. In 2009-2013, black and white homicide mortality rates were 15.2 and 3.2 deaths per 100,000 population, respectively.

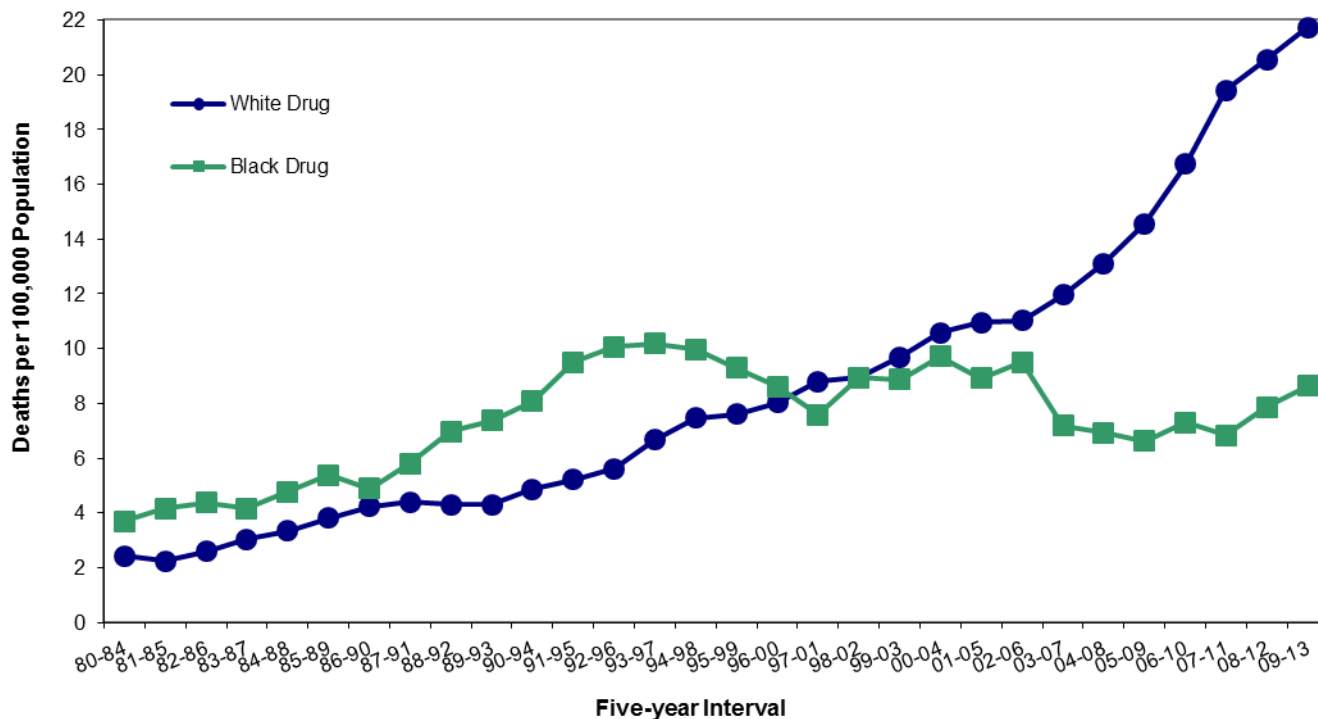


Source: Delaware Health Statistics Center

MORTALITY

Though black mortality rates for drug-induced deaths were historically higher than white rates, in 1994-1998 they began a four-year decline that moved them just below white rates by 1997-2001. Since then, white mortality rates have remained higher and continued to rise. By 2009-2013, the white drug-induced mortality rate (21.7) was more than twice the black rate (8.6).

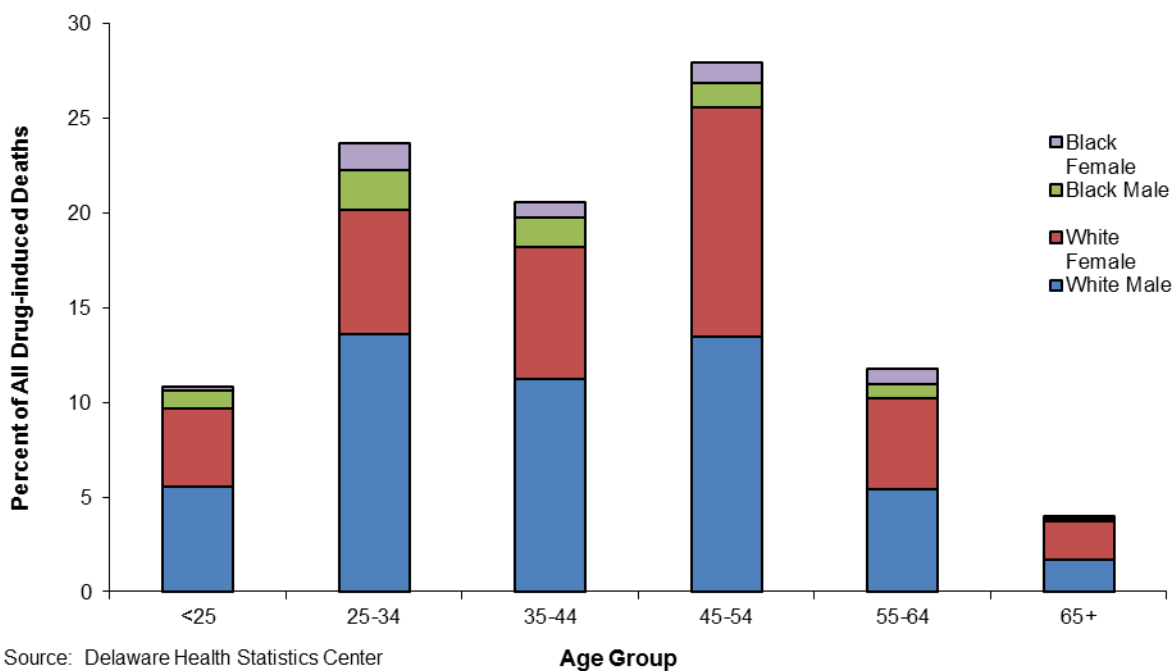
**Five-year Age-adjusted Mortality Rates for Drug-Induced Deaths by Race
Delaware, 1980-2013**



Source: Delaware Health Statistics Center

**Distribution of Drug-induced Deaths by Race, Sex, and Age Group
Delaware, 2009-2013**

In 2009-2013, 52 percent of all drug-induced deaths were white males. Of all the race-age groups, white males ages 25-34 and white females ages 45-54 were responsible for the largest proportions (both 14 percent) of drug-induced deaths. White females ages 45-54 were just below this at 12.3 percent.



Source: Delaware Health Statistics Center

TABLE F-1
NUMBER OF DEATHS BY RACE

U.S., DELAWARE, COUNTIES AND CITY OF WILMINGTON, 2000-2013

Area/ Race	2000	2001	2002	2003	2004	2005	2006	2007	2008	2009	2010	2011	2012	2013
U.S.														
All Races	2403351	2416425	2443387	2448288	2397615	2448017	2426264	2423712	2471984	2437163	2468435	2515458	2543279	2596993
White	2071287	2079691	2102589	2103714	2056643	2098097	2077549	2074151	2120233	2086355	2114749	2156077	2175178	2217103
Black	285826	287709	290051	291300	287315	292808	289971	289585	289072	286623	286959	290100	295222	302969
Other	46238	49025	50747	53274	53657	57112	58744	59976	62679	64185	66727	69281	72879	76921
Delaware														
All Races	6872	7114	6860	7067	7124	7424	7144	7246	7602	7498	7667	7816	7873	7967
White	5696	5886	5694	5782	5862	6129	5856	5985	6309	6113	6274	6412	6348	6498
Black	1131	1180	1111	1241	1204	1235	1225	1181	1217	1270	1258	1256	1392	1295
Other	45	48	55	44	58	60	63	80	76	115	135	148	133	174
Kent														
All Races	1022	1102	1113	1114	1154	1250	1219	1255	1367	1379	1345	1368	1462	1422
White	822	900	916	878	948	1017	967	1018	1133	1096	1080	1092	1159	1128
Black	184	194	187	224	193	224	234	219	220	263	231	239	273	250
Other	16	8	10	12	13	9	18	18	14	20	34	37	30	44
New Castle														
All Races	4111	4234	3996	4129	4146	4229	4039	4101	4290	4100	4221	4394	4260	4338
White	3350	3435	3244	3299	3324	3381	3212	3294	3441	3234	3316	3486	3270	3392
Black	741	774	718	809	793	809	794	771	802	799	828	820	909	847
Other	20	25	34	21	29	39	33	36	47	67	77	88	81	99
Wilmington														
All Races	826	850	779	843	782	765	728	705	726	692	713	697	691	651
White	430	421	392	413	358	362	337	345	334	329	294	320	297	273
Black	394	425	380	430	419	401	385	359	389	360	406	362	383	364
Other	2	4	7	0	5	2	6	1	3	3	13	15	11	14
Balance of NC County														
All Races	3285	3384	3217	3286	3364	3464	3311	3396	3564	3408	3508	3697	3569	3687
White	2920	3014	2852	2886	2966	3019	2875	2949	3107	2905	3022	3166	2973	3119
Black	347	349	338	379	374	408	409	412	413	439	422	458	526	483
Other	18	21	27	21	24	37	27	35	44	64	64	73	70	85
Sussex														
All Races	1739	1778	1751	1824	1824	1945	1886	1890	1945	2019	2101	2054	2151	2207
White	1524	1551	1534	1605	1590	1731	1677	1673	1735	1783	1878	1834	1919	1978
Black	206	212	206	208	218	202	197	191	195	208	199	197	210	198
Other	9	15	11	11	16	12	12	26	15	28	24	23	22	31

NDRACE

Note:
2010 US data are preliminary numbers from NCHS.

Sources:
Delaware Health Statistics Center
National Center for Health Statistics

TABLE F-2
NUMBER OF DEATHS BY AGE, RACE, AND HISPANIC ORIGIN
DELAWARE, COUNTIES AND CITY OF WILMINGTON, 2013

Area/ Age	Race									Hispanic Origin ²
	All Races	White	Black	American Indian ¹	Asian or Pacific Islander (API)				All Other	
					Chinese	Japanese	Filipino	Other API		
Delaware	7967	6503	1301	13	8	4	12	47	79	200
<1	68	30	34	0	0	0	0	0	4	12
1-4	12	6	4	0	1	0	0	0	1	1
5-14	17	10	6	0	0	0	0	1	0	1
15-24	82	48	31	0	0	0	0	0	3	8
25-34	148	105	40	1	0	0	0	1	1	8
35-44	211	149	54	0	0	0	1	3	4	14
45-54	603	433	154	1	1	0	2	5	7	25
55-64	1136	859	253	3	3	1	2	5	10	32
65-74	1385	1112	244	2	0	1	1	12	13	35
75+	4305	3751	481	6	3	2	6	20	36	64
Unknown	0	0	0	0	0	0	0	0	0	0
Kent	1422	1129	252	4	1	0	4	9	23	39
<1	6	5	1	0	0	0	0	0	0	0
1-4	1	1	0	0	0	0	0	0	0	0
5-14	3	2	0	0	0	0	0	1	0	0
15-24	23	17	4	0	0	0	0	0	2	2
25-34	31	25	6	0	0	0	0	0	0	3
35-44	49	30	14	0	0	0	1	2	2	1
45-54	113	80	27	1	0	0	1	1	3	4
55-64	190	142	43	1	0	0	1	2	1	4
65-74	276	214	56	1	0	0	0	2	3	8
75+	730	613	101	1	1	0	1	1	12	17
Unknown	0	0	0	0	0	0	0	0	0	0
New Castle	4338	3395	851	2	7	2	7	34	40	121
<1	48	17	28	0	0	0	0	0	3	8
1-4	8	2	4	0	1	0	0	0	1	1
5-14	12	6	6	0	0	0	0	0	0	1
15-24	51	26	24	0	0	0	0	0	1	4
25-34	81	51	28	0	0	0	0	1	1	2
35-44	113	79	32	0	0	0	0	0	2	7
45-54	356	242	106	0	1	0	1	3	3	19
55-64	643	457	170	1	3	1	1	3	7	22
65-74	683	508	158	0	0	0	1	10	6	22
75+	2343	2007	295	1	2	1	4	17	16	35
Unknown	0	0	0	0	0	0	0	0	0	0
Wilmington	651	274	365	0	0	1	2	3	6	35
<1	14	2	11	0	0	0	0	0	1	3
1-4	2	0	1	0	0	0	0	0	1	0
5-14	3	0	3	0	0	0	0	0	0	0
15-24	13	0	12	0	0	0	0	0	1	1
25-34	25	4	19	0	0	0	0	1	1	1
35-44	23	10	13	0	0	0	0	0	0	2
45-54	69	22	46	0	0	0	0	1	0	7
55-64	109	29	78	0	0	1	0	0	1	4
65-74	104	39	64	0	0	0	1	0	0	8
75+	289	168	118	0	0	0	1	1	1	9
Unknown	0	0	0	0	0	0	0	0	0	0
Balance of NC County	3687	3121	486	2	7	1	5	31	34	86
<1	34	15	17	0	0	0	0	0	2	5
1-4	6	2	3	0	1	0	0	0	0	1
5-14	9	6	3	0	0	0	0	0	0	1
15-24	38	26	12	0	0	0	0	0	0	3
25-34	56	47	9	0	0	0	0	0	0	1
35-44	90	69	19	0	0	0	0	0	2	5
45-54	287	220	60	0	1	0	1	2	3	12
55-64	534	428	92	1	3	0	1	3	6	18
65-74	579	469	94	0	0	0	0	10	6	14
75+	2054	1839	177	1	2	1	3	16	15	26
Unknown	0	0	0	0	0	0	0	0	0	0
Sussex	2207	1979	198	7	0	2	1	4	16	40
<1	14	8	5	0	0	0	0	0	1	4
1-4	3	3	0	0	0	0	0	0	0	0
5-14	2	2	0	0	0	0	0	0	0	0
15-24	8	5	3	0	0	0	0	0	0	2
25-34	36	29	6	1	0	0	0	0	0	3
35-44	49	40	8	0	0	0	0	1	0	6
45-54	134	111	21	0	0	0	0	1	1	2
55-64	303	260	40	1	0	0	0	0	2	6
65-74	426	390	30	1	0	1	0	0	4	5
75+	1232	1131	85	4	0	1	1	2	8	12
Unknown	0	0	0	0	0	0	0	0	0	0

DETRACE

Notes:

1. Includes any deaths that may have occurred to Aleut and Eskimo Indians.
2. People of Hispanic origin may be of any race. See *Hispanic Origin* and *Race* in the Technical Notes.

Source:

Delaware Health Statistics Center

TABLE F-3
NUMBER OF DEATHS BY AGE AND RACE
DELAWARE, COUNTIES AND CITY OF WILMINGTON, 2013

(BOTH SEXES)

Area/ Race	Age of Decedent													
	Total	< 1	1-4	5-9	10-14	15-19	20-24	25-34	35-44	45-54	55-64	65-74	75+	Unk
Delaware														
All Races	7967	68	12	7	10	28	54	148	211	603	1136	1385	4305	0
White	6498	29	6	4	6	14	34	105	149	432	858	1112	3749	0
Black	1295	34	4	2	4	13	18	40	53	154	252	243	478	0
Other	174	5	2	1	0	1	2	3	9	17	26	30	78	0
Kent														
All Races	1422	6	1	2	1	5	18	31	49	113	190	276	730	0
White	1128	5	1	1	1	3	14	25	30	80	142	214	612	0
Black	250	1	0	0	0	1	3	6	14	27	43	56	99	0
Other	44	0	0	1	0	1	1	0	5	6	5	6	19	0
New Castle														
All Races	4338	48	8	4	8	19	32	81	113	356	643	683	2343	0
White	3392	17	2	2	4	8	18	51	79	241	456	508	2006	0
Black	847	28	4	2	4	11	13	28	31	106	169	157	294	0
Other	99	3	2	0	0	0	1	2	3	9	18	18	43	0
Wilmington														
All Races	651	14	2	0	3	5	8	25	23	69	109	104	289	0
White	273	2	0	0	0	0	0	4	10	21	29	39	168	0
Black	364	11	1	0	3	5	7	19	13	46	78	63	118	0
Other	14	1	1	0	0	0	1	2	0	2	2	2	3	0
Balance of NC County														
All Races	3687	34	6	4	5	14	24	56	90	287	534	579	2054	0
White	3119	15	2	2	4	8	18	47	69	220	427	469	1838	0
Black	483	17	3	2	1	6	6	9	18	60	91	94	176	0
Other	85	2	1	0	0	0	0	0	3	7	16	16	40	0
Sussex														
All Races	2207	14	3	1	1	4	4	36	49	134	303	426	1232	0
White	1978	7	3	1	1	3	2	29	40	111	260	390	1131	0
Black	198	5	0	0	0	1	2	6	8	21	40	30	85	0
Other	31	2	0	0	0	0	0	1	1	2	3	6	16	0

Source:
Delaware Health Statistics Center

NDAGERAC

TABLE F-4
NUMBER OF DEATHS BY AGE AND RACE
DELAWARE, COUNTIES AND CITY OF WILMINGTON, 2013

(MALES)

Area/ Race	Age of Decedent													
	Total	< 1	1-4	5-9	10-14	15-19	20-24	25-34	35-44	45-54	55-64	65-74	75+	Unk
Delaware														
All Races	4031	39	6	5	6	19	38	98	125	361	678	759	1897	0
White	3289	11	3	3	3	6	25	67	90	275	522	624	1660	0
Black	652	24	1	2	3	13	12	28	31	76	144	118	200	0
Other	90	4	2	0	0	0	1	3	4	10	12	17	37	0
Kent														
All Races	719	2	1	1	1	2	12	24	28	64	117	144	323	0
White	576	2	1	1	1	1	11	19	17	47	88	118	270	0
Black	123	0	0	0	0	1	1	5	8	13	26	23	46	0
Other	20	0	0	0	0	0	0	0	3	4	3	3	7	0
New Castle														
All Races	2166	28	4	3	4	15	23	50	66	220	375	371	1007	0
White	1695	6	1	1	1	4	13	30	50	159	274	284	872	0
Black	418	20	1	2	3	11	9	18	16	55	93	78	112	0
Other	53	2	2	0	0	0	1	2	0	6	8	9	23	0
Wilmington														
All Races	336	10	1	0	3	5	6	18	13	46	61	59	114	0
White	138	0	0	0	0	0	0	4	6	15	20	25	68	0
Black	190	9	0	0	3	5	5	12	7	30	41	33	45	0
Other	8	1	1	0	0	0	1	2	0	1	0	1	1	0
Balance of NC County														
All Races	1830	18	3	3	1	10	17	32	53	174	314	312	893	0
White	1557	6	1	1	1	4	13	26	44	144	254	259	804	0
Black	228	11	1	2	0	6	4	6	9	25	52	45	67	0
Other	45	1	1	0	0	0	0	0	0	5	8	8	22	0
Sussex														
All Races	1146	9	1	1	1	2	3	24	31	77	186	244	567	0
White	1018	3	1	1	1	1	1	18	23	69	160	222	518	0
Black	111	4	0	0	0	1	2	5	7	8	25	17	42	0
Other	17	2	0	0	0	0	0	1	1	0	1	5	7	0

Source:
Delaware Health Statistics Center

NDRCAGML

TABLE F-5
NUMBER OF DEATHS BY AGE AND RACE
DELAWARE, COUNTIES AND CITY OF WILMINGTON, 2013

(FEMALES)

Area/ Race	Age of Decedent													
	Total	< 1	1-4	5-9	10-14	15-19	20-24	25-34	35-44	45-54	55-64	65-74	75+	Unk
Delaware														
All Races	3936	29	6	2	4	9	16	50	86	242	458	626	2408	0
White	3209	18	3	1	3	8	9	38	59	157	336	488	2089	0
Black	643	10	3	0	1	0	6	12	22	78	108	125	278	0
Other	84	1	0	1	0	1	1	0	5	7	14	13	41	0
Kent														
All Races	703	4	0	1	0	3	6	7	21	49	73	132	407	0
White	552	3	0	0	0	2	3	6	13	33	54	96	342	0
Black	127	1	0	0	0	0	2	1	6	14	17	33	53	0
Other	24	0	0	1	0	1	1	0	2	2	2	3	12	0
New Castle														
All Races	2172	20	4	1	4	4	9	31	47	136	268	312	1336	0
White	1697	11	1	1	3	4	5	21	29	82	182	224	1134	0
Black	429	8	3	0	1	0	4	10	15	51	76	79	182	0
Other	46	1	0	0	0	0	0	0	3	3	10	9	20	0
Wilmington														
All Races	315	4	1	0	0	0	2	7	10	23	48	45	175	0
White	135	2	0	0	0	0	0	0	4	6	9	14	100	0
Black	174	2	1	0	0	0	2	7	6	16	37	30	73	0
Other	6	0	0	0	0	0	0	0	0	1	2	1	2	0
Balance of NC County														
All Races	1857	16	3	1	4	4	7	24	37	113	220	267	1161	0
White	1562	9	1	1	3	4	5	21	25	76	173	210	1034	0
Black	255	6	2	0	1	0	2	3	9	35	39	49	109	0
Other	40	1	0	0	0	0	0	0	3	2	8	8	18	0
Sussex														
All Races	1061	5	2	0	0	2	1	12	18	57	117	182	665	0
White	960	4	2	0	0	2	1	11	17	42	100	168	613	0
Black	87	1	0	0	0	0	0	1	1	13	15	13	43	0
Other	14	0	0	0	0	0	0	0	0	2	2	1	9	0

Source:
Delaware Health Statistics Center

NDRCAGFE

TABLE F-6
MORTALITY TRENDS BY RACE, ETHNICITY, GENDER, AND AGE
DELAWARE, 2003-2013

CHARACTERISTIC	Year										
	2003	2004	2005	2006	2007	2008	2009	2010	2011	2012	2013
Resident Deaths											
Number	7067	7124	7424	7144	7246	7602	7498	7667	7816	7873	7967
Crude Rate	863.9	857.5	878.4	831.4	831.2	860.1	840.8	852.1	861.7	860.8	862.5
AADR ²	835.9	814.5	818.1	762.7	748.3	760.5	730.8	727.8	726.4	709.7	696.6
Decedent's Race/Ethnicity											
White											
Number	5782	5862	6129	5856	5985	6309	6113	6274	6412	6348	6498
Percent	81.8%	82.3%	82.6%	82.0%	82.6%	83.0%	81.5%	81.8%	82.0%	80.6%	81.6%
AADR ²	800.3	788.1	794.6	741.0	734.8	753.4	713.6	718.2	721.8	695.3	692.4
Black											
Number	1241	1204	1235	1225	1181	1217	1270	1258	1256	1392	1295
Percent	17.6%	16.9%	16.6%	17.1%	16.3%	16.0%	16.9%	16.4%	16.1%	17.7%	16.3%
AADR ²	1099.6	1046.7	1024.3	943.9	889.2	860.7	866.5	834.4	795.7	858.5	769.4
Hispanic ¹											
Number	105	121	121	126	178	189	164	142	144	148	200
Percent	1.5%	1.7%	1.6%	1.8%	2.5%	2.5%	2.2%	1.9%	1.8%	1.9%	2.5%
AADR ²	615.7	730.0	624.5	485.8	775.5	789.6	691.0	550.0	536.1	504.9	706.3
Decedent's Gender											
Female											
Number	3559	3517	3746	3590	3614	3850	3782	3802	3946	4015	3936
Percent	50.4%	49.4%	50.5%	50.3%	49.9%	50.6%	50.4%	49.6%	50.5%	51.0%	49.4%
AADR ²	706.2	679.7	694.2	647.3	630.3	651.9	624.0	610.8	625.0	613.9	588.0
Male											
Number	3508	3607	3678	3554	3632	3752	3716	3865	3870	3858	4031
Percent	49.6%	50.6%	49.5%	49.7%	50.1%	49.4%	49.6%	50.4%	49.5%	49.0%	50.6%
AADR ²	997.9	996.9	976.6	905.9	893.5	894.3	860.2	869.9	849.7	826.0	830.3
Decedent's age											
<1											
Number	107	97	106	99	91	101	91	88	98	84	68
Percent	1.5%	1.4%	1.4%	1.4%	1.3%	1.3%	1.2%	1.1%	1.3%	1.1%	0.9%
1-14											
Number	22	44	26	20	15	23	27	18	28	30	29
Percent	0.3%	0.6%	0.4%	0.3%	0.2%	0.3%	0.4%	0.2%	0.4%	0.4%	0.4%
15-24											
Number	101	97	78	92	88	91	92	97	86	89	82
Percent	1.4%	1.4%	1.1%	1.3%	1.2%	1.2%	1.2%	1.3%	1.1%	1.1%	1.0%
25-44											
Number	389	387	375	427	385	400	359	362	356	388	359
Percent	5.5%	5.4%	5.1%	6.0%	5.3%	5.3%	4.8%	4.7%	4.6%	4.9%	4.5%
45-64											
Number	1327	1338	1406	1410	1418	1552	1529	1578	1579	1620	1739
Percent	18.8%	18.8%	18.9%	19.7%	19.6%	20.4%	20.4%	20.6%	20.2%	20.6%	21.8%
65-74											
Number	1244	1310	1272	1232	1238	1276	1313	1307	1357	1325	1385
Percent	17.6%	18.4%	17.1%	17.2%	17.1%	16.8%	17.5%	17.0%	17.4%	16.8%	17.4%
75-84											
Number	2096	2039	2160	1960	2022	2043	1944	1976	2077	1897	1931
Percent	29.7%	28.6%	29.1%	27.4%	27.9%	26.9%	25.9%	25.8%	26.6%	24.1%	24.2%
85+											
Number	1781	1812	2001	1904	1985	2116	2143	2241	2235	2440	2374
Percent	25.2%	25.4%	27.0%	26.7%	27.4%	27.8%	28.6%	29.2%	28.6%	31.0%	29.8%

MORTREND

Notes:

1. Because of the small numbers of Hispanic deaths and the resulting variability in annual mortality rates, Hispanic mortality rates should be interpreted with caution.
2. Age-Adjusted Death Rate per 100,000, adjusted to 2000 U.S. Standard Population.
3. Figures for decedent's age may not equal total number of annual deaths due to deaths of unknown age.

Sources:

Delaware Health Statistics Center
U.S. Census

TABLE F-7
 NUMBER OF DEATHS AND MEDIAN AGE AT DEATH BY SEX
 FOR TWENTY LEADING CAUSES, ALCOHOL-INDUCED DEATHS, AND DRUG-INDUCED DEATHS

DELAWARE, 2013

Cause of Death ¹	Deaths		Median Age at Death	
	Number	Percent	Male	Female
All causes	7,967	100.0	73	80
Malignant neoplasms	1,903	23.9	72	71
Diseases of heart	1,864	23.4	76	84
Dementia	422	5.3	86	89
Chronic lower respiratory diseases	483	6.1	78	81
Cerebrovascular diseases	409	5.1	78	84
Accidents (unintentional injuries)	403	5.1	49	56
Diabetes mellitus	218	2.7	71	76
Alzheimer's disease	192	2.4	85	89
Nephritis, nephrotic syndrome & nephrosis	178	2.2	78	80
Intentional self-harm (suicide)	122	1.5	51	50
Septicemia	157	2.0	78	74
Influenza & pneumonia	150	1.9	83	85
Other diseases of respiratory system	96	1.2	76	81
Chronic liver disease & cirrhosis	82	1.0	64	61
Parkinson's disease	83	1.0	85	85
Other diseases of circulatory system	60	0.8	78	81
Assault (homicide)	52	0.7	27	39
Certain conditions originating in the perinatal period	39	0.5	0	0
Pneumonitis due to solids & liquids	51	0.6	82	87
Essential (primary) hypertension & hypertensive renal disease	69	0.9	83	87
Alcohol-induced deaths²	62	0.8	54	54
Drug-induced deaths²	171	2.1	40	44

LCODARBS

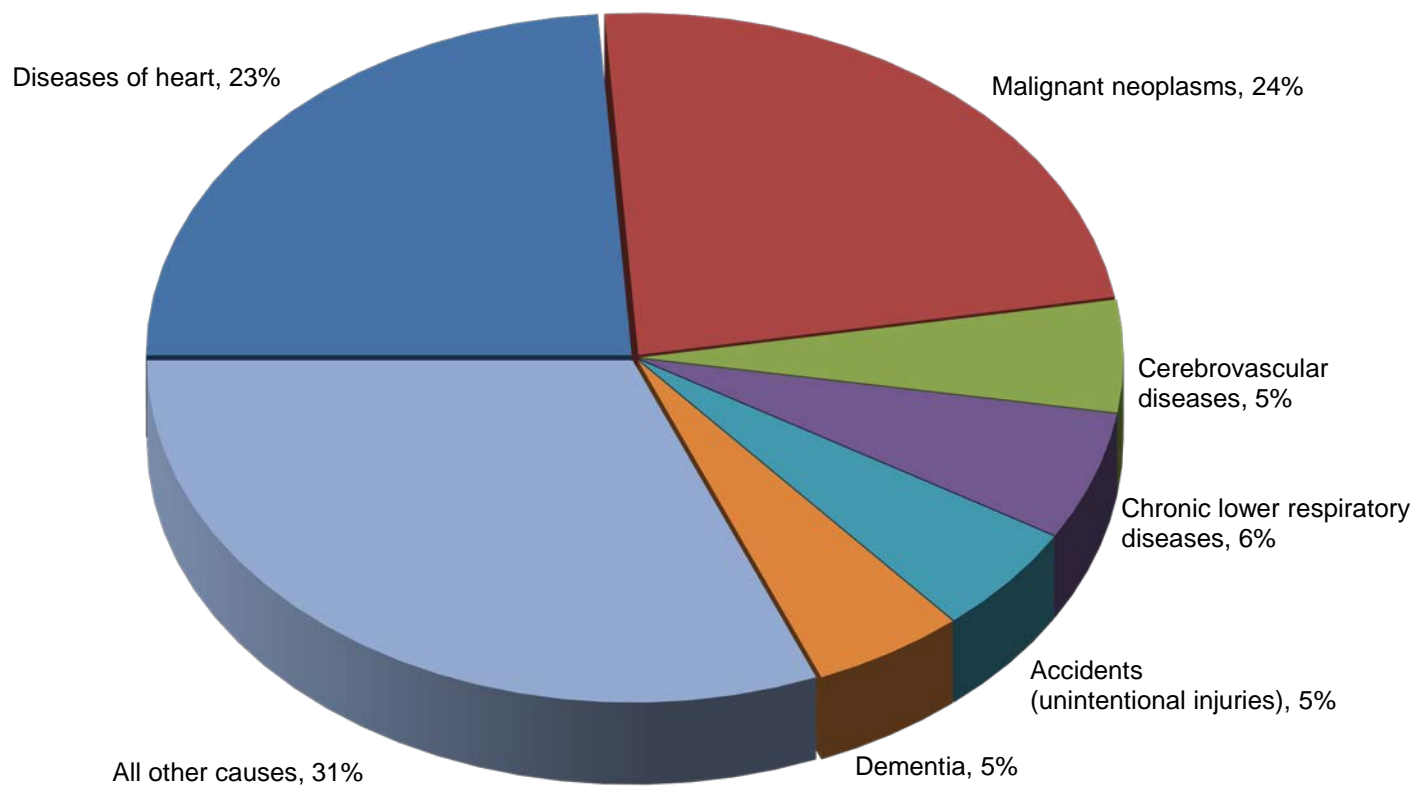
Notes:

1. Classified according to ICD-10 Codes, Tenth Revision. See Appendix E for listing of ICD-10 Codes.
2. Included in selected categories.

Source:

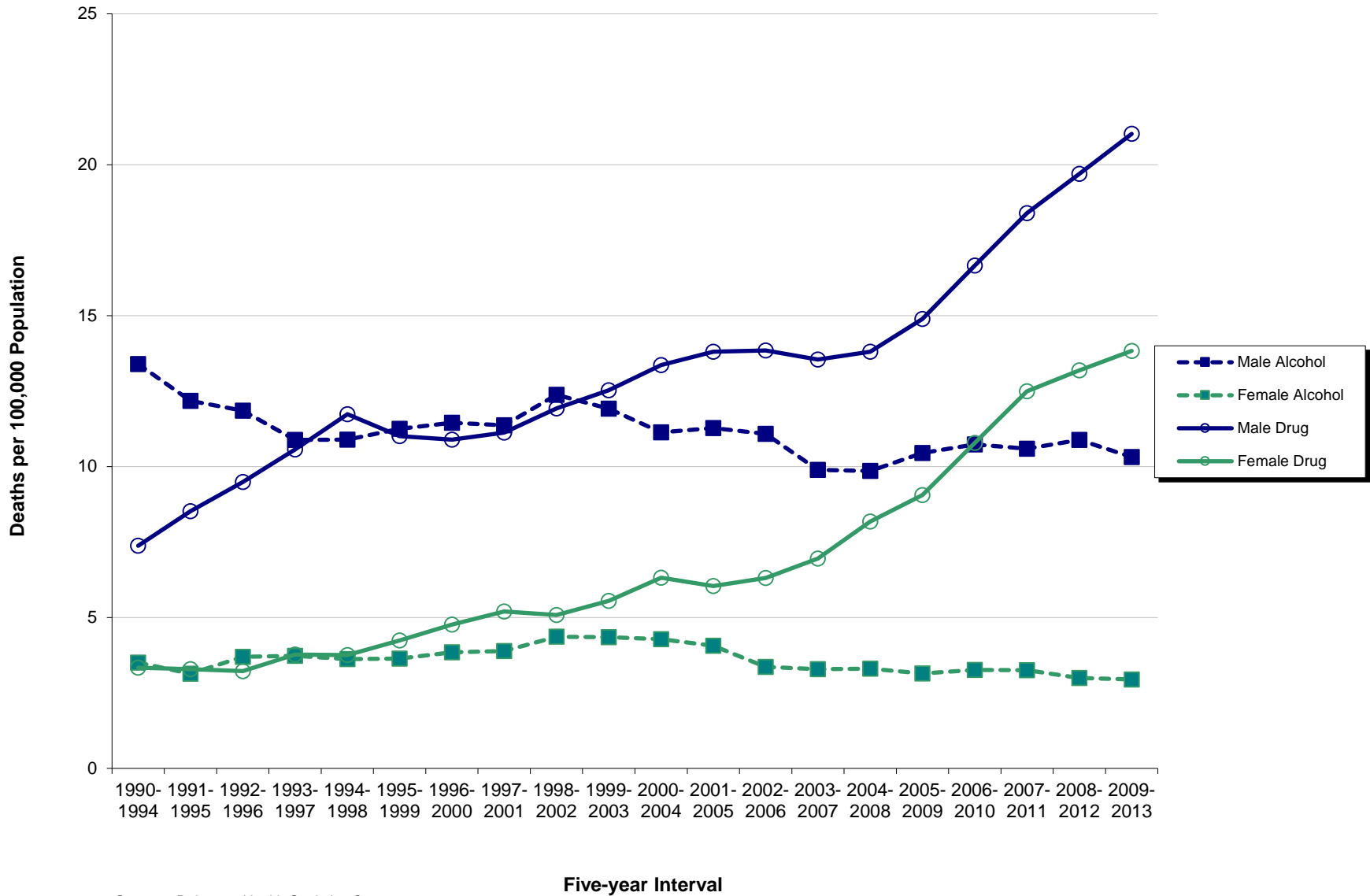
Delaware Health Statistics Center

Figure F-1
Leading Causes of Death
Delaware, 2013



Source: Delaware Health Statistics Center

Figure F-2
Five-year Age-adjusted Drug- and Alcohol-Induced Mortality Rates by Sex
Delaware, 1990-2013



Source: Delaware Health Statistics Center

TABLE F-8
LEADING CAUSES OF DEATH
COUNTIES AND CITY OF WILMINGTON, 2009-2013

Kent

Cause of Death*	Deaths	
	#	%
Diseases of heart	1741	25.0
Malignant neoplasms	1722	24.7
Chronic lower respiratory diseases	421	6.0
Cerebrovascular diseases	324	4.6
Accidents (unintentional injuries)	315	4.5
Diabetes mellitus	205	2.9
Alzheimer's disease	180	2.6
Septicemia	146	2.1
Nephritis, nephrotic syndrome & nephrosis	122	1.7
Influenza & pneumonia	118	1.7
Intentional self-harm (suicide)	106	1.5
Chronic liver disease & cirrhosis	73	1.0
Essential (primary) hypertension & hypertensive renal disease	68	1.0
In situ neoplasms, benign neoplasms & neoplasms of uncertain behavior	52	0.7
Parkinson's disease	44	0.6
Certain conditions originating in the perinatal period	40	0.6
All other causes	1299	18.6
Total	6976	100.0

New Castle

Cause of Death*	Deaths	
	#	%
Malignant neoplasms	5102	23.9
Diseases of heart	4605	21.6
Cerebrovascular diseases	1258	5.9
Chronic lower respiratory diseases	1154	5.4
Accidents (unintentional injuries)	999	4.7
Diabetes mellitus	615	2.9
Nephritis, nephrotic syndrome & nephrosis	467	2.2
Alzheimer's disease	463	2.2
Influenza & pneumonia	384	1.8
Intentional self-harm (suicide)	320	1.5
Septicemia	320	1.5
Chronic liver disease & cirrhosis	218	1.0
Assault (homicide)	211	1.0
Parkinson's disease	196	0.9
Certain conditions originating in the perinatal period	185	0.9
Human immunodeficiency virus (HIV) disease	144	0.7
All other causes	4672	21.9
Total	21313	100.0

City of Wilmington

Cause of Death*	Deaths	
	#	%
Diseases of heart	742	21.5
Malignant neoplasms	690	20.0
Cerebrovascular diseases	217	6.3
Chronic lower respiratory diseases	166	4.8
Accidents (unintentional injuries)	154	4.5
Diabetes mellitus	136	3.9
Assault (homicide)	98	2.8
Human immunodeficiency virus (HIV) disease	94	2.7
Nephritis, nephrotic syndrome & nephrosis	93	2.7
Alzheimer's disease	64	1.9
Certain conditions originating in the perinatal period	57	1.7
Influenza & pneumonia	51	1.5
Septicemia	47	1.4
Chronic liver disease & cirrhosis	45	1.3
Essential (primary) hypertension & hypertensive renal disease	35	1.0
Intentional self-harm (suicide)	33	1.0
All other causes	722	21.0
Total	3444	100.0

Sussex

Cause of Death*	Deaths	
	#	%
Diseases of heart	2646	25.1
Malignant neoplasms	2603	24.7
Chronic lower respiratory diseases	659	6.3
Accidents (unintentional injuries)	479	4.5
Cerebrovascular diseases	469	4.5
Alzheimer's disease	346	3.3
Diabetes mellitus	266	2.5
Nephritis, nephrotic syndrome & nephrosis	221	2.1
Influenza & pneumonia	166	1.6
Septicemia	154	1.5
Chronic liver disease & cirrhosis	143	1.4
Intentional self-harm (suicide)	138	1.3
Parkinson's disease	103	1.0
Pneumonitis due to solids & liquids	76	0.7
Essential (primary) hypertension & hypertensive renal disease	75	0.7
In situ neoplasms, benign neoplasms & neoplasms of uncertain behavior	68	0.6
All other causes	1920	18.2
Total	10532	100.0

Note:

*Cause of death categories were derived using the NCHS list of 50 rankable causes of death as specified by NCHS. For specific codes, see Appendix E.

Source:

Delaware Health Statistics Center

LCODCTWL

TABLE F-9
TEN LEADING CAUSES OF DEATH BY SEX AND RACE GROUP
DELAWARE, 2009-2013

All Races, Male

Cause of Death*	Deaths	
	#	%
Malignant neoplasms	4922	25.4
Diseases of heart	4655	24.1
Accidents (unintentional injuries)	1125	5.8
Chronic lower respiratory diseases	948	4.9
Cerebrovascular diseases	848	4.4
Diabetes mellitus	560	2.9
Intentional self-harm (suicide)	443	2.3
Nephritis, nephrotic syndrome & nephrosis	389	2.0
Influenza & pneumonia	322	1.7
Chronic liver disease & cirrhosis	299	1.5
All other causes	4829	25.0
Total	19340	100.0

All Races, Female

Cause of Death*	Deaths	
	#	%
Malignant neoplasms	4505	23.1
Diseases of heart	4337	22.3
Chronic lower respiratory diseases	1286	6.6
Cerebrovascular diseases	1203	6.2
Alzheimer's disease	690	3.5
Accidents (unintentional injuries)	668	3.4
Diabetes mellitus	526	2.7
Nephritis, nephrotic syndrome & nephrosis	421	2.2
Influenza & pneumonia	346	1.8
Septicemia	336	1.7
All other causes	5163	26.5
Total	19481	100.0

White, Both Sexes

Cause of Death*	Deaths	
	#	%
Malignant neoplasms	7689	24.3
Diseases of heart	7449	23.5
Chronic lower respiratory diseases	1979	6.3
Cerebrovascular diseases	1638	5.2
Accidents (unintentional injuries)	1504	4.8
Alzheimer's disease	849	2.7
Diabetes mellitus	760	2.4
Nephritis, nephrotic syndrome & nephrosis	597	1.9
Influenza & pneumonia	570	1.8
Intentional self-harm (suicide)	501	1.6
All other causes	8109	25.6
Total	31645	100.0

Black, Both Sexes

Cause of Death*	Deaths	
	#	%
Malignant neoplasms	1566	24.2
Diseases of heart	1403	21.7
Cerebrovascular diseases	365	5.6
Diabetes mellitus	302	4.7
Accidents (unintentional injuries)	247	3.8
Chronic lower respiratory diseases	232	3.6
Nephritis, nephrotic syndrome & nephrosis	199	3.1
Assault (homicide)	163	2.5
Human immunodeficiency virus (HIV) disease	153	2.4
Certain conditions originating in the perinatal period	144	2.2
All other causes	1697	26.2
Total	6471	100.0

LCODMFWB

Hispanic, Both Sexes

Cause of Death*	Deaths	
	#	%
Malignant neoplasms	157	19.7
Diseases of heart	136	17.0
Accidents (unintentional injuries)	78	9.8
Cerebrovascular diseases	42	5.3
Diabetes mellitus	37	4.6
Certain conditions originating in the perinatal period	26	3.3
Chronic lower respiratory diseases	26	3.3
Intentional self-harm (suicide)	20	2.5
Assault (homicide)	19	2.4
chromosomal abnormalities	19	2.4
All other causes	238	29.8
Total	798	100.0

Notes:

1. Cause of death categories were derived using the NCHS list of 50 rankable causes of death as specified by NCHS. For specific codes, see Appendix E.
2. There was a three-way tie for the tenth most common cause of Hispanic death; Alzheimer's disease also accounted for 19 deaths.

Source:

Delaware Health Statistics Center

TABLE F-10
TEN LEADING CAUSES OF DEATH BY RACE-SEX GROUP
DELAWARE, 2009-2013

White Male

Cause of Death*	Deaths	
	#	%
Malignant neoplasms	4030	25.7
Diseases of heart	3873	24.7
Accidents (unintentional injuries)	930	5.9
Chronic lower respiratory diseases	820	5.2
Cerebrovascular diseases	660	4.2
Diabetes mellitus	411	2.6
Intentional self-harm (suicide)	388	2.5
Nephritis, nephrotic syndrome & nephrosis	285	1.8
Influenza & pneumonia	274	1.7
Alzheimer's disease	263	1.7
All other causes	3724	23.8
Total	15658	100.0

White Females

Cause of Death*	Deaths	
	#	%
Malignant neoplasms	3659	22.9
Diseases of heart	3576	22.4
Chronic lower respiratory diseases	1159	7.2
Cerebrovascular diseases	978	6.1
Alzheimer's disease	586	3.7
Accidents (unintentional injuries)	574	3.6
Diabetes mellitus	349	2.2
Nephritis, nephrotic syndrome & nephrosis	312	2.0
Influenza & pneumonia	296	1.9
Septicemia	256	1.6
All other causes	4242	26.5
Total	15987	100.0

Black Males

Cause of Death*	Deaths	
	#	%
Malignant neoplasms	801	24.2
Diseases of heart	709	21.4
Accidents (unintentional injuries)	171	5.2
Cerebrovascular diseases	167	5.0
Assault (homicide)	148	4.5
Diabetes mellitus	135	4.1
Chronic lower respiratory diseases	113	3.4
Human immunodeficiency virus (HIV) disease	108	3.3
Nephritis, nephrotic syndrome & nephrosis	95	2.9
Certain conditions originating in the perinatal period	84	2.5
All other causes	783	23.6
Total	3314	100.0

Black Females

Cause of Death*	Deaths	
	#	%
Malignant neoplasms	765	24.2
Diseases of heart	694	22.0
Cerebrovascular diseases	198	6.3
Diabetes mellitus	167	5.3
Chronic lower respiratory diseases	119	3.8
Nephritis, nephrotic syndrome & nephrosis	104	3.3
Alzheimer's disease	94	3.0
Accidents (unintentional injuries)	76	2.4
Septicemia	72	2.3
Certain conditions originating in the perinatal period	60	1.9
All other causes	808	25.6
Total	3157	100.0

Hispanic Males

Cause of Death*	Deaths	
	#	%
Malignant neoplasms	88	18.5
Diseases of heart	79	16.6
Accidents (unintentional injuries)	55	11.6
Cerebrovascular diseases	24	5.0
Diabetes mellitus	23	4.8
Assault (homicide)	18	3.8
Certain conditions originating in the perinatal period	17	3.6
Chronic lower respiratory diseases	17	3.6
Intentional self-harm (suicide)	14	2.9
chromosomal abnormalities	13	2.7
All other causes	128	26.9
Total	476	100.0

Hispanic Females

Cause of Death*	Deaths	
	#	%
Malignant neoplasms	69	21.4
Diseases of heart	57	17.7
Accidents (unintentional injuries)	23	7.1
Cerebrovascular diseases	18	5.6
Alzheimer's disease	15	4.7
Diabetes mellitus	14	4.3
Nephritis, nephrotic syndrome & nephrosis	11	3.4
Certain conditions originating in the perinatal period	9	2.8
Chronic lower respiratory diseases	9	2.8
Septicemia	8	2.5
All other causes	89	27.6
Total	322	100.0

Note:

*Cause of death categories were derived using the NCHS list of 50 rankable causes of death as specified by NCHS. For specific codes, see Appendix E.

LCODRCSX

Source:

TABLE F-11
TEN LEADING CAUSES OF DEATH BY AGE
DELAWARE, 2009-2013

1-4 Years

Cause of Death*	Deaths	
	Number	Percent
Accidents (unintentional injuries)	8	17.0
Congenital malformations, deformations, &	7	14.9
Assault (homicide)	5	10.6
Malignant neoplasms	4	8.5
Chronic lower respiratory diseases	2	4.3
Complications of medical & surgical care	1	2.1
Certain conditions originating in the perinatal period	1	2.1
Nephritis, nephrotic syndrome & nephrosis	1	2.1
Pneumonitis due to solids & liquids	1	2.1
All other causes	17	36.2
Total	47	100.0

5-14 Years

Cause of Death*	Deaths	
	Number	Percent
Accidents (unintentional injuries)	30	35.3
Malignant neoplasms	13	15.3
chromosomal abnormalities	7	8.2
Intentional self-harm (suicide)	4	4.7
Chronic lower respiratory diseases	3	3.5
Pneumonitis due to solids & liquids	2	2.4
Diseases of heart	2	2.4
Complications of medical & surgical care	1	1.2
Assault (homicide)	1	1.2
Certain conditions originating in the perinatal period	1	1.2
All other causes	21	24.7
Total	85	100.0

15-24 Years

Cause of Death*	Deaths	
	Number	Percent
Accidents (unintentional injuries)	169	37.9
Assault (homicide)	86	19.3
Intentional self-harm (suicide)	75	16.8
Malignant neoplasms	21	4.7
Diseases of heart	15	3.4
Congenital malformations, deformations, &	4	0.9
Complications of medical & surgical care	3	0.7
Pregnancy, childbirth & the puerperium	3	0.7
Chronic lower respiratory diseases	3	0.7
Septicemia	3	0.7
All other causes	64	14.3
Total	446	100.0

25-44 Years

Cause of Death*	Deaths	
	Number	Percent
Accidents (unintentional injuries)	521	28.6
Diseases of heart	265	14.5
Malignant neoplasms	228	12.5
Intentional self-harm (suicide)	169	9.3
Assault (homicide)	106	5.8
Diabetes mellitus	48	2.6
Human immunodeficiency virus (HIV) disease	44	2.4
Cerebrovascular diseases	38	2.1
Chronic liver disease & cirrhosis	19	1.0
Septicemia	19	1.0
All other causes	367	20.1
Total	1824	100.0

45-64 Years

Cause of Death*	Deaths	
	Number	Percent
Malignant neoplasms	2671	33.2
Diseases of heart	1620	20.1
Accidents (unintentional injuries)	513	6.4
Diabetes mellitus	290	3.6
Chronic lower respiratory diseases	281	3.5
Cerebrovascular diseases	278	3.5
Chronic liver disease & cirrhosis	250	3.1
Intentional self-harm (suicide)	240	3.0
Nephritis, nephrotic syndrome & nephrosis	152	1.9
Septicemia	143	1.8
All other causes	1607	20.0
Total	8045	100.0

65+ Years

Cause of Death*	Deaths	
	Number	Percent
Diseases of heart	7083	25.3
Malignant neoplasms	6490	23.2
Chronic lower respiratory diseases	1928	6.9
Cerebrovascular diseases	1726	6.2
Alzheimer's disease	977	3.5
Diabetes mellitus	746	2.7
Nephritis, nephrotic syndrome & nephrosis	641	2.3
Influenza & pneumonia	564	2.0
Accidents (unintentional injuries)	543	1.9
Septicemia	451	1.6
All other causes	6796	24.3
Total	27945	100.0

Note:

*Cause of death categories were derived using the NCHS list of 50 rankable causes of death as specified by NCHS. For specific codes, see Appendix E.

Source:

Delaware Health Statistics Center

LCODAGE

TABLE F-12
NUMBER OF DEATHS BY AGE FOR SELECTED LEADING CAUSES OF DEATH
DELAWARE, 2013
(ALL RACES, BOTH SEXES)

Cause of Death*	Age of Decedent													
	Total	< 1	1-4	5-9	10-14	15-19	20-24	25-34	35-44	45-54	55-64	65-74	75+	Unk
Diseases of the heart (I00-I09, I11, I13, I20-I51)	1864	2	1	1	0	1	1	9	36	127	235	297	1154	0
Acute rheumatic fever and chronic rheumatic heart disease (I00-I09)	10	0	0	0	0	0	0	0	0	1	1	2	6	0
Hypertensive heart disease (I11)	78	0	0	0	0	0	0	1	3	22	20	16	16	0
Hypertensive heart and renal disease (I13)	6	0	0	0	0	0	0	0	1	0	1	0	4	0
Ischemic heart disease (I20-I25)	1250	0	0	0	0	0	0	2	19	71	156	206	796	0
All other forms of heart disease (I26-I51)	520	2	1	1	0	1	1	6	13	33	57	73	332	0
Malignant neoplasms (C00-C97)	1903	0	2	0	2	0	3	11	31	162	401	499	792	0
Malignant neoplasms of lip, oral cavity and pharynx (C00-C14)	23	0	0	0	0	0	0	1	1	4	6	4	7	0
Malignant neoplasms of digestive organs (C15-C26)	480	0	0	0	0	0	0	3	6	46	94	134	197	0
Malignant neoplasms of respiratory and intrathoracic organs (C30-C39)	561	0	0	0	0	0	0	1	6	42	137	164	211	0
Malignant neoplasms of breast (C50)	133	0	0	0	0	0	0	0	6	18	30	30	49	0
Malignant neoplasms of female genital organs, (C51-C58)	101	0	0	0	0	0	0	0	3	13	29	30	26	0
Malignant neoplasms of male genital organs, (C60-C63)	72	0	0	0	0	0	1	0	0	1	9	12	49	0
Malignant neoplasms of urinary tract (C64-C68)	105	0	1	0	0	0	0	0	0	6	11	28	59	0
Malignant neoplasms of meninges, brain, and other parts of central nervous system (C70-C72)	53	0	0	0	0	0	1	1	2	5	11	15	18	0
Malignant neoplasms of lymphoid, hematopoietic, and related tissues (C81-C96)	192	0	1	0	1	0	1	1	3	7	34	41	103	0
All other and unspecified malignant neoplasms (C40-C49, C69, C73-C80,C97)	183	0	0	0	1	0	0	4	4	20	40	41	73	0
Cerebrovascular diseases (I60-I69)	409	0	0	0	0	0	1	3	6	21	49	56	273	0

TABLE F-12 (continued)
(2013 - Delaware, All Races, Both Sexes)

	Age of Decedent													
	Total	< 1	1-4	5-9	10-14	15-19	20-24	25-34	35-44	45-54	55-64	65-74	75+	Unk
Chronic lower respiratory diseases (J40-J47)	483	0	0	0	1	0	2	2	2	16	46	98	316	0
Accidents (unintentional injuries) (V01-X59, Y85-Y86)	403	1	3	1	2	10	20	59	58	66	52	27	104	0
Motor Vehicle Accidents (V02-V04, (V09.0,V09.2,V12-V14, V19.0-V19.2, V19.4-V19.6,V20-V79, V80.3-V80.5, V81.0-V81.1, V82.0-V82.1, V83-V86, V87.0-V87.8, V88.0-V88.8,V89.0,V89.2))	114	0	1	1	2	9	12	13	18	19	19	11	9	0
Nontransport Accidents (W00-X59, Y86)	287	1	2	0	0	1	8	46	40	47	32	15	95	0
Diabetes mellitus (E10-E14)	218	0	0	0	0	0	0	3	5	16	42	50	102	0
Influenza and pneumonia (J10-J18)	150	1	0	0	0	0	0	3	0	5	14	17	110	0
Alzheimer's disease (G30)	192	0	0	0	0	0	0	0	0	0	0	12	180	0
Nephritis, nephrotic syndrome, and nephrosis (N00-N07, N17-N19, N25-N27)	178	0	0	0	0	0	0	1	2	12	20	36	107	0
Septicemia (A40-A41)	157	1	0	0	0	0	2	1	5	9	23	34	82	0
Intentional self-harm (suicide) (X60-X84, Y87.0)	122	0	0	0	1	4	10	18	15	30	25	7	12	0
Chronic liver disease and cirrhosis (K70, K73-K74)	82	0	0	0	0	0	0	2	2	18	24	20	16	0
Essential hypertension and hypertensive renal disease (I10, I12)	69	0	0	0	0	0	0	0	1	6	8	6	48	0
Aortic aneurysm and dissection (I71)	30	0	0	0	0	0	0	0	0	0	2	5	23	0
Assault (homicide) (X85-Y09, Y87.1)	52	0	0	0	0	10	7	11	8	9	2	3	2	0
Human immunodeficiency virus (HIV) (B20-B24)	36	0	0	0	0	0	1	2	2	15	10	3	3	0
Certain conditions originating in the perinatal period (P00-P96)	39	39	0	0	0	0	0	0	0	0	0	0	0	0
Congenital malformations, deformations, and chromosomal abnormalities (Q00-Q99)	27	6	3	2	0	0	0	3	3	3	3	1	3	0
All other causes	1553	18	3	3	4	3	7	20	35	88	180	214	978	0
TOTAL	7967	68	12	7	10	28	54	148	211	603	1136	1385	4305	0

Note:
*ICD Codes, Tenth Revision.

LCDAGEDE

Source:
Delaware Health Statistics Center

TABLE F-13
NUMBER OF DEATHS BY AGE FOR SELECTED LEADING CAUSES OF DEATH
KENT, 2013
(ALL RACES, BOTH SEXES)

Cause of Death*	Age of Decedent													
	Total	< 1	1-4	5-9	10-14	15-19	20-24	25-34	35-44	45-54	55-64	65-74	75+	Unk
Diseases of the heart (I00-I09, I11, I13, I20-I51)	357	0	0	0	0	0	0	1	7	25	42	72	210	0
Acute rheumatic fever and chronic rheumatic heart disease (I00-I09)	3	0	0	0	0	0	0	0	0	0	0	0	3	0
Hypertensive heart disease (I11)	16	0	0	0	0	0	0	0	2	2	3	7	2	0
Hypertensive heart and renal disease (I13)	1	0	0	0	0	0	0	0	0	0	0	0	1	0
Ischemic heart disease (I20-I25)	230	0	0	0	0	0	0	0	2	15	32	45	136	0
All other forms of heart disease (I26-I51)	107	0	0	0	0	0	0	1	3	8	7	20	68	0
Malignant neoplasms (C00-C97)	323	0	0	0	0	0	1	4	6	31	65	89	127	0
Malignant neoplasms of lip, oral cavity and pharynx (C00-C14)	7	0	0	0	0	0	0	1	0	1	2	1	2	0
Malignant neoplasms of digestive organs (C15-C26)	83	0	0	0	0	0	0	1	1	10	15	17	39	0
Malignant neoplasms of respiratory and intrathoracic organs (C30-C39)	96	0	0	0	0	0	0	0	1	9	20	35	31	0
Malignant neoplasms of breast (C50)	22	0	0	0	0	0	0	0	1	3	4	7	7	0
Malignant neoplasms of female genital organs, (C51-C58)	21	0	0	0	0	0	0	0	0	4	6	6	5	0
Malignant neoplasms of male genital organs, (C60-C63)	12	0	0	0	0	0	1	0	0	1	2	2	6	0
Malignant neoplasms of urinary tract (C64-C68)	16	0	0	0	0	0	0	0	0	1	2	6	7	0
Malignant neoplasms of meninges, brain, and other parts of central nervous system (C70-C72)	1	0	0	0	0	0	0	0	0	0	1	0	0	0
Malignant neoplasms of lymphoid, hematopoietic, and related tissues (C81-C96)	30	0	0	0	0	0	0	1	2	0	4	7	16	0
All other and unspecified malignant neoplasms (C40-C49, C69, C73-C80, C97)	35	0	0	0	0	0	0	1	1	2	9	8	14	0
Cerebrovascular diseases (I60-I69)	59	0	0	0	0	0	0	0	2	3	7	10	37	0

TABLE F-13 (continued)
(2013 - Kent, All Races, Both Sexes)

	Age of Decedent													
	Total	< 1	1-4	5-9	10-14	15-19	20-24	25-34	35-44	45-54	55-64	65-74	75+	Unk
Chronic lower respiratory diseases (J40-J47)	78	0	0	0	0	0	0	1	0	1	4	15	57	0
Accidents (unintentional injuries) (V01-X59, Y85-Y86)	72	0	0	0	0	1	7	13	14	12	7	6	12	0
Motor Vehicle Accidents (V02-V04, (V09.0,V09.2,V12-V14, V19.0-V19.2, V19.4-V19.6,V20-V79, V80.3-V80.5, V81.0-V81.1, V82.0-V82.1, V83-V86, V87.0-V87.8, V88.0-V88.8,V89.0,V89.2)	21	0	0	0	0	1	6	3	5	1	4	1	0	0
Nontransport Accidents (W00-X59, Y86)	51	0	0	0	0	0	1	10	9	11	3	5	12	0
Diabetes mellitus (E10-E14)	47	0	0	0	0	0	0	0	3	7	8	12	17	0
Influenza and pneumonia (J10-J18)	24	0	0	0	0	0	0	1	0	2	4	4	13	0
Alzheimer's disease (G30)	31	0	0	0	0	0	0	0	0	0	0	1	30	0
Nephritis, nephrotic syndrome, and nephrosis (N00-N07, N17-N19, N25-N27)	31	0	0	0	0	0	0	0	1	0	2	7	21	0
Septicemia (A40-A41)	41	0	0	0	0	0	0	1	2	3	8	9	18	0
Intentional self-harm (suicide) (X60-X84, Y87.0)	26	0	0	0	0	1	5	4	4	4	5	0	3	0
Chronic liver disease and cirrhosis (K70, K73-K74)	11	0	0	0	0	0	0	1	0	2	2	4	2	0
Essential hypertension and hypertensive renal disease (I10, I12)	14	0	0	0	0	0	0	0	0	2	1	1	10	0
Aortic aneurysm and dissection (I71)	10	0	0	0	0	0	0	0	0	0	0	1	9	0
Assault (homicide) (X85-Y09, Y87.1)	9	0	0	0	0	2	0	1	1	2	1	1	1	0
Human immunodeficiency virus (HIV) (B20-B24)	4	0	0	0	0	0	0	0	1	1	1	1	0	0
Certain conditions originating in the perinatal period (P00-P96)	1	1	0	0	0	0	0	0	0	0	0	0	0	0
Congenital malformations, deformations, and chromosomal abnormalities (Q00-Q99)	5	1	1	2	0	0	0	0	0	1	0	0	0	0
All other causes	279	4	0	0	1	1	5	4	8	17	33	43	163	0
TOTAL	1422	6	1	2	1	5	18	31	49	113	190	276	730	0

LCDAGEKT

Note:
*ICD Codes, Tenth Revision.

Source:
Delaware Health Statistics Center

TABLE F-14
NUMBER OF DEATHS BY AGE FOR SELECTED LEADING CAUSES OF DEATH
NEW CASTLE, 2013
(ALL RACES, BOTH SEXES)

Cause of Death*	Age of Decedent													Unk
	Total	< 1	1-4	5-9	10-14	15-19	20-24	25-34	35-44	45-54	55-64	65-74	75+	
Diseases of the heart (I00-I09, I11, I13, I20-I51)	950	2	1	1	0	1	1	7	21	67	123	136	590	0
Acute rheumatic fever and chronic rheumatic heart disease (I00-I09)	5	0	0	0	0	0	0	0	0	1	0	2	2	0
Hypertensive heart disease (I11)	38	0	0	0	0	0	0	1	0	11	12	2	12	0
Hypertensive heart and renal disease (I13)	4	0	0	0	0	0	0	0	1	0	1	0	2	0
Ischemic heart disease (I20-I25)	627	0	0	0	0	0	0	2	12	37	79	96	401	0
All other forms of heart disease (I26-I51)	276	2	1	1	0	1	1	4	8	18	31	36	173	0
Malignant neoplasms (C00-C97)	1041	0	2	0	2	0	2	3	17	95	236	256	428	0
Malignant neoplasms of lip, oral cavity and pharynx (C00-C14)	11	0	0	0	0	0	0	0	1	3	2	2	3	0
Malignant neoplasms of digestive organs (C15-C26)	271	0	0	0	0	0	0	1	1	23	59	75	112	0
Malignant neoplasms of respiratory and intrathoracic organs (C30-C39)	288	0	0	0	0	0	0	1	4	22	73	75	113	0
Malignant neoplasms of breast (C50)	69	0	0	0	0	0	0	0	5	12	17	10	25	0
Malignant neoplasms of female genital organs, (C51-C58)	55	0	0	0	0	0	0	0	1	7	18	13	16	0
Malignant neoplasms of male genital organs, (C60-C63)	35	0	0	0	0	0	0	0	0	0	7	9	19	0
Malignant neoplasms of urinary tract (C64-C68)	62	0	1	0	0	0	0	0	0	5	8	14	34	0
Malignant neoplasms of meninges, brain, and other parts of central nervous system (C70-C72)	40	0	0	0	0	0	1	0	2	3	9	10	15	0
Malignant neoplasms of lymphoid, hematopoietic, and related tissues (C81-C96)	107	0	1	0	1	0	1	0	0	6	20	26	52	0
All other and unspecified malignant neoplasms (C40-C49, C69, C73-C80,C97)	103	0	0	0	1	0	0	1	3	14	23	22	39	0
Cerebrovascular diseases (I60-I69)	264	0	0	0	0	0	0	2	3	14	31	31	183	0

TABLE F-14 (continued)
(2013 - New Castle, All Races, Both Sexes)

	Age of Decedent													Unk
	Total	< 1	1-4	5-9	10-14	15-19	20-24	25-34	35-44	45-54	55-64	65-74	75+	
Chronic lower respiratory diseases (J40-J47)	246	0	0	0	1	0	2	0	2	9	27	42	163	0
Accidents (unintentional injuries) (V01-X59, Y85-Y86)	231	1	1	1	2	7	12	27	26	44	31	15	64	0
Motor Vehicle Accidents (V02-V04, (V09.0,V09.2,V12-V14, V19.0-V19.2, V19.4-V19.6,V20-V79, V80.3-V80.5, V81.0-V81.1, V82.0-V82.1, V83-V86, V87.0-V87.8, V88.0-V88.8,V89.0,V89.2)	62	0	0	1	2	6	6	4	6	15	9	7	6	0
Nontransport Accidents (W00-X59, Y86)	167	1	1	0	0	1	6	23	20	29	21	7	58	0
Diabetes mellitus (E10-E14)	110	0	0	0	0	0	0	2	2	7	25	28	46	0
Influenza and pneumonia (J10-J18)	79	1	0	0	0	0	0	2	0	0	6	7	63	0
Alzheimer's disease (G30)	107	0	0	0	0	0	0	0	0	0	0	6	101	0
Nephritis, nephrotic syndrome, and nephrosis (N00-N07, N17-N19, N25-N27)	102	0	0	0	0	0	0	0	1	9	13	21	58	0
Septicemia (A40-A41)	80	1	0	0	0	0	2	0	1	6	12	16	42	0
Intentional self-harm (suicide) (X60-X84, Y87.0)	69	0	0	0	1	1	4	13	9	20	14	3	4	0
Chronic liver disease and cirrhosis (K70, K73-K74)	40	0	0	0	0	0	0	1	2	12	8	6	11	0
Essential hypertension and hypertensive renal disease (I10, I12)	29	0	0	0	0	0	0	0	1	2	5	4	17	0
Aortic aneurysm and dissection (I71)	11	0	0	0	0	0	0	0	0	0	2	2	7	0
Assault (homicide) (X85-Y09, Y87.1)	40	0	0	0	0	8	6	10	6	6	1	2	1	0
Human immunodeficiency virus (HIV) (B20-B24)	27	0	0	0	0	0	1	2	1	12	9	1	1	0
Certain conditions originating in the perinatal period (P00-P96)	31	31	0	0	0	0	0	0	0	0	0	0	0	0
Congenital malformations, deformations, and chromosomal abnormalities (Q00-Q99)	14	4	1	0	0	0	0	1	2	0	3	1	2	0
All other causes	867	8	3	2	2	2	2	11	19	53	97	106	562	0
TOTAL	4338	48	8	4	8	19	32	81	113	356	643	683	2343	0

LCDAGENC

Note:
*ICD Codes, Tenth Revision.

Source:
Delaware Health Statistics Center

TABLE F-15
NUMBER OF DEATHS BY AGE FOR SELECTED LEADING CAUSES OF DEATH
CITY OF WILMINGTON, 2013
(ALL RACES, BOTH SEXES)

Cause of Death*	Age of Decedent													
	Total	< 1	1-4	5-9	10-14	15-19	20-24	25-34	35-44	45-54	55-64	65-74	75+	Unk
Diseases of the heart (I00-I09, I11, I13, I20-I51)	145	1	0	0	0	0	0	3	5	14	19	25	78	0
Acute rheumatic fever and chronic rheumatic heart disease (I00-I09)	0	0	0	0	0	0	0	0	0	0	0	0	0	0
Hypertensive heart disease (I11)	9	0	0	0	0	0	0	0	0	0	4	0	5	0
Hypertensive heart and renal disease (I13)	0	0	0	0	0	0	0	0	0	0	0	0	0	0
Ischemic heart disease (I20-I25)	93	0	0	0	0	0	0	1	2	8	7	19	56	0
All other forms of heart disease (I26-I51)	43	1	0	0	0	0	0	2	3	6	8	6	17	0
Malignant neoplasms (C00-C97)	129	0	0	0	0	0	1	1	3	9	35	28	52	0
Malignant neoplasms of lip, oral cavity and pharynx (C00-C14)	2	0	0	0	0	0	0	0	0	0	0	1	1	0
Malignant neoplasms of digestive organs (C15-C26)	37	0	0	0	0	0	0	1	0	1	13	9	13	0
Malignant neoplasms of respiratory and intrathoracic organs (C30-C39)	32	0	0	0	0	0	0	0	1	4	10	6	11	0
Malignant neoplasms of breast (C50)	7	0	0	0	0	0	0	0	0	1	4	0	2	0
Malignant neoplasms of female genital organs, (C51-C58)	9	0	0	0	0	0	0	0	1	0	2	2	4	0
Malignant neoplasms of male genital organs, (C60-C63)	6	0	0	0	0	0	0	0	0	0	0	3	3	0
Malignant neoplasms of urinary tract (C64-C68)	6	0	0	0	0	0	0	0	0	0	1	1	4	0
Malignant neoplasms of meninges, brain, and other parts of central nervous system (C70-C72)	4	0	0	0	0	0	0	0	1	0	0	1	2	0
Malignant neoplasms of lymphoid, hematopoietic, and related tissues (C81-C96)	15	0	0	0	0	0	1	0	0	1	1	5	7	0
All other and unspecified malignant neoplasms (C40-C49, C69, C73-C80, C97)	11	0	0	0	0	0	0	0	0	2	4	0	5	0
Cerebrovascular diseases (I60-I69)	44	0	0	0	0	0	0	0	0	2	4	4	34	0

TABLE F-15 (continued)
(2013 - City of Wilmington, All Races, Both Sexes)

	Age of Decedent												Unk	
	Total	< 1	1-4	5-9	10-14	15-19	20-24	25-34	35-44	45-54	55-64	65-74		75+
Chronic lower respiratory diseases (J40-J47)	31	0	0	0	1	0	1	0	1	3	4	5	16	0
Accidents (unintentional injuries) (V01-X59, Y85-Y86)	39	0	1	0	1	0	4	3	3	9	8	4	6	0
Motor Vehicle Accidents (V02-V04, V09.0,V09.2,V12-V14, V19.0-V19.2, V19.4-V19.6,V20-V79, V80.3-V80.5, V81.0-V81.1, V82.0-V82.1, V83-V86, V87.0-V87.8, V88.0-V88.8,V89.0,V89.2)	10	0	0	0	1	0	3	0	0	3	1	2	0	0
Nontransport Accidents (W00-X59, Y86)	29	0	1	0	0	0	1	3	3	6	7	2	6	0
Diabetes mellitus (E10-E14)	23	0	0	0	0	0	0	1	1	2	4	5	10	0
Influenza and pneumonia (J10-J18)	7	0	0	0	0	0	0	0	0	0	3	0	4	0
Alzheimer's disease (G30)	12	0	0	0	0	0	0	0	0	0	0	0	12	0
Nephritis, nephrotic syndrome, and nephrosis (N00-N07, N17-N19, N25-N27)	20	0	0	0	0	0	0	0	0	5	3	5	7	0
Septicemia (A40-A41)	11	0	0	0	0	0	0	0	0	0	5	2	4	0
Intentional self-harm (suicide) (X60-X84, Y87.0)	6	0	0	0	0	0	0	3	1	1	1	0	0	0
Chronic liver disease and cirrhosis (K70, K73-K74)	8	0	0	0	0	0	0	0	0	2	2	2	2	0
Essential hypertension and hypertensive renal disease (I10, I12)	7	0	0	0	0	0	0	0	0	1	2	3	1	0
Aortic aneurysm and dissection (I71)	2	0	0	0	0	0	0	0	0	0	0	0	2	0
Assault (homicide) (X85-Y09, Y87.1)	21	0	0	0	0	5	2	8	1	2	0	2	1	0
Human immunodeficiency virus (HIV) (B20-B24)	18	0	0	0	0	0	0	2	1	8	6	1	0	0
Certain conditions originating in the perinatal period (P00-P96)	9	9	0	0	0	0	0	0	0	0	0	0	0	0
Congenital malformations, deformations, and chromosomal abnormalities (Q00-Q99)	2	1	1	0	0	0	0	0	0	0	0	0	0	0
All other causes	117	3	0	0	1	0	0	4	7	11	13	18	60	0
TOTAL	651	14	2	0	3	5	8	25	23	69	109	104	289	0

Note:
*ICD Codes, Tenth Revision.

LCDAGEWLM

Source:
Delaware Health Statistics Center

TABLE F-16
NUMBER OF DEATHS BY AGE FOR SELECTED LEADING CAUSES OF DEATH
SUSSEX, 2013
(ALL RACES, BOTH SEXES)

Cause of Death*	Age of Decedent													
	Total	< 1	1-4	5-9	10-14	15-19	20-24	25-34	35-44	45-54	55-64	65-74	75+	Unk
Diseases of the heart (I00-I09, I11, I13, I20-I51)	557	0	0	0	0	0	0	1	8	35	70	89	354	0
Acute rheumatic fever and chronic rheumatic heart disease (I00-I09)	2	0	0	0	0	0	0	0	0	0	1	0	1	0
Hypertensive heart disease (I11)	24	0	0	0	0	0	0	0	1	9	5	7	2	0
Hypertensive heart and renal disease (I13)	1	0	0	0	0	0	0	0	0	0	0	0	1	0
Ischemic heart disease (I20-I25)	393	0	0	0	0	0	0	0	5	19	45	65	259	0
All other forms of heart disease (I26-I51)	137	0	0	0	0	0	0	1	2	7	19	17	91	0
Malignant neoplasms (C00-C97)	539	0	0	0	0	0	0	4	8	36	100	154	237	0
Malignant neoplasms of lip, oral cavity and pharynx (C00-C14)	5	0	0	0	0	0	0	0	0	0	2	1	2	0
Malignant neoplasms of digestive organs (C15-C26)	126	0	0	0	0	0	0	1	4	13	20	42	46	0
Malignant neoplasms of respiratory and intrathoracic organs (C30-C39)	177	0	0	0	0	0	0	0	1	11	44	54	67	0
Malignant neoplasms of breast (C50)	42	0	0	0	0	0	0	0	0	3	9	13	17	0
Malignant neoplasms of female genital organs, (C51-C58)	25	0	0	0	0	0	0	0	2	2	5	11	5	0
Malignant neoplasms of male genital organs, (C60-C63)	25	0	0	0	0	0	0	0	0	0	0	1	24	0
Malignant neoplasms of urinary tract (C64-C68)	27	0	0	0	0	0	0	0	0	0	1	8	18	0
Malignant neoplasms of meninges, brain, and other parts of central nervous system (C70-C72)	12	0	0	0	0	0	0	1	0	2	1	5	3	0
Malignant neoplasms of lymphoid, hematopoietic, and related tissues (C81-C96)	55	0	0	0	0	0	0	0	1	1	10	8	35	0
All other and unspecified malignant neoplasms (C40-C49, C69, C73-C80,C97)	45	0	0	0	0	0	0	2	0	4	8	11	20	0
Cerebrovascular diseases (I60-I69)	86	0	0	0	0	0	1	1	1	4	11	15	53	0

TABLE F-16 (continued)
(2013 - Sussex, All Races, Both Sexes)

	Age of Decedent													
	Total	< 1	1-4	5-9	10-14	15-19	20-24	25-34	35-44	45-54	55-64	65-74	75+	Unk
Chronic lower respiratory diseases (J40-J47)	159	0	0	0	0	0	0	1	0	6	15	41	96	0
Accidents (unintentional injuries) (V01-X59, Y85-Y86)	100	0	2	0	0	2	1	19	18	10	14	6	28	0
Motor Vehicle Accidents (V02-V04, (V09.0,V09.2,V12-V14, V19.0-V19.2, V19.4-V19.6,V20-V79, V80.3-V80.5, V81.0-V81.1, V82.0-V82.1, V83-V86, V87.0-V87.8, V88.0-V88.8,V89.0,V89.2)	31	0	1	0	0	2	0	6	7	3	6	3	3	0
Nontransport Accidents (W00-X59, Y86)	69	0	1	0	0	0	1	13	11	7	8	3	25	0
Diabetes mellitus (E10-E14)	61	0	0	0	0	0	0	1	0	2	9	10	39	0
Influenza and pneumonia (J10-J18)	47	0	0	0	0	0	0	0	0	3	4	6	34	0
Alzheimer's disease (G30)	54	0	0	0	0	0	0	0	0	0	0	5	49	0
Nephritis, nephrotic syndrome, and nephrosis (N00-N07, N17-N19, N25-N27)	45	0	0	0	0	0	0	1	0	3	5	8	28	0
Septicemia (A40-A41)	36	0	0	0	0	0	0	0	2	0	3	9	22	0
Intentional self-harm (suicide) (X60-X84, Y87.0)	27	0	0	0	0	2	1	1	2	6	6	4	5	0
Chronic liver disease and cirrhosis (K70, K73-K74)	31	0	0	0	0	0	0	0	0	4	14	10	3	0
Essential hypertension and hypertensive renal disease (I10, I12)	26	0	0	0	0	0	0	0	0	2	2	1	21	0
Aortic aneurysm and dissection (I71)	9	0	0	0	0	0	0	0	0	0	0	2	7	0
Assault (homicide) (X85-Y09, Y87.1)	3	0	0	0	0	0	1	0	1	1	0	0	0	0
Human immunodeficiency virus (HIV) (B20-B24)	5	0	0	0	0	0	0	0	0	2	0	1	2	0
Certain conditions originating in the perinatal period (P00-P96)	7	7	0	0	0	0	0	0	0	0	0	0	0	0
Congenital malformations, deformations, and chromosomal abnormalities (Q00-Q99)	8	1	1	0	0	0	0	2	1	2	0	0	1	0
All other causes	407	6	0	1	1	0	0	5	8	18	50	65	253	0
TOTAL	2207	14	3	1	1	4	4	36	49	134	303	426	1232	0

LCDAGESX

Note:
*ICD Codes, Tenth Revision.

Source:
Delaware Health Statistics Center

TABLE F-17
NUMBER OF DEATHS BY AGE FOR SELECTED LEADING CAUSES OF DEATH
DELAWARE, 2013
(ALL RACES, MALES)

Cause of Death*	Age of Decedent													
	Total	< 1	1-4	5-9	10-14	15-19	20-24	25-34	35-44	45-54	55-64	65-74	75+	Unk
Diseases of the heart (I00-I09, I11, I13, I20-I51)	962	1	1	0	0	1	1	4	24	80	166	178	506	0
Acute rheumatic fever and chronic rheumatic heart disease (I00-I09)	4	0	0	0	0	0	0	0	0	0	1	1	2	0
Hypertensive heart disease (I11)	37	0	0	0	0	0	0	1	1	11	11	9	4	0
Hypertensive heart and renal disease (I13)	4	0	0	0	0	0	0	0	1	0	1	0	2	0
Ischemic heart disease (I20-I25)	670	0	0	0	0	0	0	1	14	49	119	125	362	0
All other forms of heart disease (I26-I51)	247	1	1	0	0	1	1	2	8	20	34	43	136	0
Malignant neoplasms (C00-C97)	1009	0	1	0	0	0	1	8	10	87	216	260	426	0
Malignant neoplasms of lip, oral cavity and pharynx (C00-C14)	18	0	0	0	0	0	0	1	1	4	5	3	4	0
Malignant neoplasms of digestive organs (C15-C26)	288	0	0	0	0	0	0	3	3	35	63	78	106	0
Malignant neoplasms of respiratory and intrathoracic organs (C30-C39)	321	0	0	0	0	0	0	0	3	25	81	89	123	0
Malignant neoplasms of breast (C50)	2	0	0	0	0	0	0	0	0	1	1	0	0	0
Malignant neoplasms of male genital organs, (C60-C63)	72	0	0	0	0	0	1	0	0	1	9	12	49	0
Malignant neoplasms of urinary tract (C64-C68)	63	0	0	0	0	0	0	0	0	4	6	18	35	0
Malignant neoplasms of meninges, brain, and other parts of central nervous system (C70-C72)	22	0	0	0	0	0	0	1	0	2	1	8	10	0
Malignant neoplasms of lymphoid, hematopoietic, and related tissues (C81-C96)	119	0	1	0	0	0	0	1	2	5	21	28	61	0
All other and unspecified malignant neoplasms (C40-C49, C69, C73-C80, C97)	104	0	0	0	0	0	0	2	1	10	29	24	38	0
Cerebrovascular diseases (I60-I69)	169	0	0	0	0	0	1	1	1	10	26	28	102	0

TABLE F-17 (continued)
(2013 - All Races, Male)

	Age of Decedent													
	Total	< 1	1-4	5-9	10-14	15-19	20-24	25-34	35-44	45-54	55-64	65-74	75+	Unk
Chronic lower respiratory diseases (J40-J47)	211	0	0	0	1	0	1	1	2	6	22	48	130	0
Accidents (unintentional injuries) (V01-X59, Y85-Y86)	247	0	2	1	1	7	13	42	36	44	33	20	48	0
Motor Vehicle Accidents (V02-V04, V09.0, V09.2, V12-V14, V19.0-V19.2, V19.4-V19.6, V20-V79, V80.3-V80.5, V81.0-V81.1, V82.0-V82.1, V83-V86, V87.0-V87.8, V88.0-V88.8, V89.0, V89.2)	79	0	0	1	1	7	8	9	12	15	14	8	4	0
Nontransport Accidents (W00-X59, Y86)	166	0	2	0	0	0	5	33	24	29	18	11	44	0
Diabetes mellitus (E10-E14)	130	0	0	0	0	0	0	3	5	11	27	30	54	0
Influenza and pneumonia (J10-J18)	65	0	0	0	0	0	0	1	0	2	7	6	49	0
Alzheimer's disease (G30)	62	0	0	0	0	0	0	0	0	0	0	6	56	0
Nephritis, nephrotic syndrome, and nephrosis (N00-N07, N17-N19, N25-N27)	87	0	0	0	0	0	0	1	0	8	16	12	50	0
Septicemia (A40-A41)	77	1	0	0	0	0	0	0	1	2	8	21	44	0
Intentional self-harm (suicide) (X60-X84, Y87.0)	91	0	0	0	0	1	9	12	14	20	18	6	11	0
Chronic liver disease and cirrhosis (K70, K73-K74)	57	0	0	0	0	0	0	1	2	13	14	16	11	0
Essential hypertension and hypertensive renal disease (I10, I12)	27	0	0	0	0	0	0	0	0	2	5	2	18	0
Aortic aneurysm and dissection (I71)	16	0	0	0	0	0	0	0	0	0	2	4	10	0
Assault (homicide) (X85-Y09, Y87.1)	41	0	0	0	0	9	7	9	4	8	1	3	0	0
Human immunodeficiency virus (HIV) (B20-B24)	28	0	0	0	0	0	1	1	2	10	8	3	3	0
Certain conditions originating in the perinatal period (P00-P96)	25	25	0	0	0	0	0	0	0	0	0	0	0	0
Congenital malformations, deformations, and chromosomal abnormalities (Q00-Q99)	11	2	1	1	0	0	0	2	1	1	2	0	1	0
All other causes	716	10	1	3	4	1	4	12	23	57	107	116	378	0
TOTAL	4031	39	6	5	6	19	38	98	125	361	678	759	1897	0

LCDAGMAL

Note:
*ICD Codes, Tenth Revision.

Source:
Delaware Health Statistics Center

TABLE F-18
NUMBER OF DEATHS BY AGE FOR SELECTED LEADING CAUSES OF DEATH
DELAWARE, 2013
(ALL RACES, FEMALES)

Cause of Death*	Age of Decedent													
	Total	< 1	1-4	5-9	10-14	15-19	20-24	25-34	35-44	45-54	55-64	65-74	75+	Unk
Diseases of the heart (I00-I09, I11, I13, I20-I51)	902	1	0	1	0	0	0	5	12	47	69	119	648	0
Acute rheumatic fever and chronic rheumatic heart disease (I00-I09)	6	0	0	0	0	0	0	0	0	1	0	1	4	0
Hypertensive heart disease (I11)	41	0	0	0	0	0	0	0	2	11	9	7	12	0
Hypertensive heart and renal disease (I13)	2	0	0	0	0	0	0	0	0	0	0	0	2	0
Ischemic heart disease (I20-I25)	580	0	0	0	0	0	0	1	5	22	37	81	434	0
All other forms of heart disease (I26-I51)	273	1	0	1	0	0	0	4	5	13	23	30	196	0
Malignant neoplasms (C00-C97)	894	0	1	0	2	0	2	3	21	75	185	239	366	0
Malignant neoplasms of lip, oral cavity and pharynx (C00-C14)	5	0	0	0	0	0	0	0	0	0	1	1	3	0
Malignant neoplasms of digestive organs (C15-C26)	192	0	0	0	0	0	0	0	3	11	31	56	91	0
Malignant neoplasms of respiratory and intrathoracic organs (C30-C39)	240	0	0	0	0	0	0	1	3	17	56	75	88	0
Malignant neoplasms of breast (C50)	131	0	0	0	0	0	0	0	6	17	29	30	49	0
Malignant neoplasms of female genital organs, (C51-C58)	101	0	0	0	0	0	0	0	3	13	29	30	26	0
Malignant neoplasms of urinary tract (C64-C68)	42	0	1	0	0	0	0	0	0	2	5	10	24	0
Malignant neoplasms of meninges, brain, and other parts of central nervous system (C70-C72)	31	0	0	0	0	0	1	0	2	3	10	7	8	0
Malignant neoplasms of lymphoid, hematopoietic, and related tissues (C81-C96)	73	0	0	0	1	0	1	0	1	2	13	13	42	0
All other and unspecified malignant neoplasms (C40-C49, C69, C73-C80, C97)	79	0	0	0	1	0	0	2	3	10	11	17	35	0
Cerebrovascular diseases (I60-I69)	240	0	0	0	0	0	0	2	5	11	23	28	171	0

TABLE F-18 (continued)
(2013 - All Races, Female)

	Age of Decedent													
	Total	< 1	1-4	5-9	10-14	15-19	20-24	25-34	35-44	45-54	55-64	65-74	75+	Unk
Chronic lower respiratory diseases (J40-J47)	272	0	0	0	0	0	1	1	0	10	24	50	186	0
Accidents (unintentional injuries) (V01-X59, Y85-Y86)	156	1	1	0	1	3	7	17	22	22	19	7	56	0
Motor Vehicle Accidents (V02-V04, V09.0, V09.2, V12-V14, V19.0-V19.2, V19.4-V19.6, V20-V79, V80.3-V80.5, V81.0-V81.1, V82.0-V82.1, V83-V86, V87.0-V87.8, V88.0-V88.8, V89.0, V89.2)	35	0	1	0	1	2	4	4	6	4	5	3	5	0
Nontransport Accidents (W00-X59, Y86)	121	1	0	0	0	1	3	13	16	18	14	4	51	0
Diabetes mellitus (E10-E14)	88	0	0	0	0	0	0	0	0	5	15	20	48	0
Influenza and pneumonia (J10-J18)	85	1	0	0	0	0	0	2	0	3	7	11	61	0
Alzheimer's disease (G30)	130	0	0	0	0	0	0	0	0	0	0	6	124	0
Nephritis, nephrotic syndrome, and nephrosis (N00-N07, N17-N19, N25-N27)	91	0	0	0	0	0	0	0	2	4	4	24	57	0
Septicemia (A40-A41)	80	0	0	0	0	0	2	1	4	7	15	13	38	0
Intentional self-harm (suicide) (X60-X84, Y87.0)	31	0	0	0	1	3	1	6	1	10	7	1	1	0
Chronic liver disease and cirrhosis (K70, K73-K74)	25	0	0	0	0	0	0	1	0	5	10	4	5	0
Essential hypertension and hypertensive renal disease (I10, I12)	42	0	0	0	0	0	0	0	1	4	3	4	30	0
Aortic aneurysm and dissection (I71)	14	0	0	0	0	0	0	0	0	0	0	1	13	0
Assault (homicide) (X85-Y09, Y87.1)	11	0	0	0	0	1	0	2	4	1	1	0	2	0
Human immunodeficiency virus (HIV) (B20-B24)	8	0	0	0	0	0	0	1	0	5	2	0	0	0
Certain conditions originating in the perinatal period (P00-P96)	14	14	0	0	0	0	0	0	0	0	0	0	0	0
Congenital malformations, deformations, and chromosomal abnormalities (Q00-Q99)	16	4	2	1	0	0	0	1	2	2	1	1	2	0
All Other Causes	837	8	2	0	0	2	3	8	12	31	73	98	600	0
TOTAL	3936	29	6	2	4	9	16	50	86	242	458	626	2408	0

LCDAGFEM

Note:
*ICD Codes, Tenth Revision.

Source:
Delaware Health Statistics Center

TABLE F-19
NUMBER OF DEATHS BY AGE FOR SELECTED LEADING CAUSES OF DEATH
DELAWARE, 2013
(WHITE, BOTH SEXES)

Cause of Death*	Age of Decedent													
	Total	< 1	1-4	5-9	10-14	15-19	20-24	25-34	35-44	45-54	55-64	65-74	75+	Unk
Diseases of the heart (I00-I09, I11, I13, I20-I51)	1541	1	0	1	0	1	1	5	19	87	180	226	1020	0
Acute rheumatic fever and chronic rheumatic heart disease (I00-I09)	8	0	0	0	0	0	0	0	0	1	0	2	5	0
Hypertensive heart disease (I11)	56	0	0	0	0	0	0	0	2	13	14	13	14	0
Hypertensive heart and renal disease (I13)	5	0	0	0	0	0	0	0	0	0	1	0	4	0
Ischemic heart disease (I20-I25)	1042	0	0	0	0	0	0	1	10	56	124	157	694	0
All other forms of heart disease (I26-I51)	430	1	0	1	0	1	1	4	7	17	41	54	303	0
Malignant neoplasms (C00-C97)	1557	0	2	0	1	0	2	8	24	115	304	418	683	0
Malignant neoplasms of lip, oral cavity and pharynx (C00-C14)	17	0	0	0	0	0	0	1	0	3	5	2	6	0
Malignant neoplasms of digestive organs (C15-C26)	388	0	0	0	0	0	0	2	5	34	69	108	170	0
Malignant neoplasms of respiratory and intrathoracic organs (C30-C39)	468	0	0	0	0	0	0	0	5	33	106	144	180	0
Malignant neoplasms of breast (C50)	102	0	0	0	0	0	0	0	3	10	18	25	46	0
Malignant neoplasms of female genital organs, (C51-C58)	75	0	0	0	0	0	0	0	2	10	23	19	21	0
Malignant neoplasms of male genital organs, (C60-C63)	48	0	0	0	0	0	1	0	0	0	6	6	35	0
Malignant neoplasms of urinary tract (C64-C68)	93	0	1	0	0	0	0	0	0	6	9	25	52	0
Malignant neoplasms of meninges, brain, and other parts of central nervous system (C70-C72)	46	0	0	0	0	0	1	1	2	4	9	15	14	0
Malignant neoplasms of lymphoid, hematopoietic, and related tissues (C81-C96)	162	0	1	0	0	0	0	1	3	4	26	37	90	0
All other and unspecified malignant neoplasms (C40-C49, C69, C73-C80, C97)	158	0	0	0	1	0	0	3	4	11	33	37	69	0
Cerebrovascular diseases (I60-I69)	316	0	0	0	0	0	1	2	4	10	30	41	228	0

TABLE F-19 (continued)
(2013 - White, Both Sexes)

	Age of Decedent													
	Total	< 1	1-4	5-9	10-14	15-19	20-24	25-34	35-44	45-54	55-64	65-74	75+	Unk
Chronic lower respiratory diseases (J40-J47)	426	0	0	0	0	0	1	2	2	12	41	87	281	0
Accidents (unintentional injuries) (V01-X59, Y85-Y86)	334	1	2	1	1	8	12	47	47	55	46	22	92	0
Motor Vehicle Accidents (V02-V04, (V09.0,V09.2,V12-V14, V19.0-V19.2, V19.4-V19.6,V20-V79, V80.3-V80.5, V81.0-V81.1, V82.0-V82.1, V83-V86, V87.0-V87.8, V88.0-V88.8,V89.0,V89.2)	88	0	1	1	1	7	6	10	13	15	17	10	7	0
Nontransport Accidents (W00-X59, Y86)	244	1	1	0	0	1	6	37	34	40	28	11	85	0
Diabetes mellitus (E10-E14)	151	0	0	0	0	0	0	1	3	11	29	37	70	0
Influenza and pneumonia (J10-J18)	133	1	0	0	0	0	0	3	0	5	10	14	100	0
Alzheimer's disease (G30)	163	0	0	0	0	0	0	0	0	0	0	10	153	0
Nephritis, nephrotic syndrome, and nephrosis (N00-N07, N17-N19, N25-N27)	129	0	0	0	0	0	0	0	0	6	11	25	87	0
Septicemia (A40-A41)	124	1	0	0	0	0	2	0	4	5	13	29	70	0
Intentional self-harm (suicide) (X60-X84, Y87.0)	112	0	0	0	1	2	9	16	13	29	24	6	12	0
Chronic liver disease and cirrhosis (K70, K73-K74)	70	0	0	0	0	0	0	2	2	12	23	16	15	0
Essential hypertension and hypertensive renal disease (I10, I12)	54	0	0	0	0	0	0	0	1	4	3	4	42	0
Aortic aneurysm and dissection (I71)	23	0	0	0	0	0	0	0	0	0	0	5	18	0
Assault (homicide) (X85-Y09, Y87.1)	20	0	0	0	0	1	0	1	7	6	1	3	1	0
Human immunodeficiency virus (HIV) (B20-B24)	8	0	0	0	0	0	1	1	0	2	2	1	1	0
Certain conditions originating in the perinatal period (P00-P96)	12	12	0	0	0	0	0	0	0	0	0	0	0	0
Congenital malformations, deformations, and chromosomal abnormalities (Q00-Q99)	22	5	2	1	0	0	0	3	2	2	3	1	3	0
All other causes	1303	8	0	1	3	2	5	14	21	71	138	167	873	0
TOTAL	6498	29	6	4	6	14	34	105	149	432	858	1112	3749	0

LCDAGWHT

Note:
*ICD Codes, Tenth Revision.

Source:
Delaware Health Statistics Center

TABLE F-20
NUMBER OF DEATHS BY AGE FOR SELECTED LEADING CAUSES OF DEATH
DELAWARE, 2013
(WHITE MALES)

Cause of Death*	Age of Decedent													
	Total	< 1	1-4	5-9	10-14	15-19	20-24	25-34	35-44	45-54	55-64	65-74	75+	Unk
Diseases of the heart (I00-I09, I11, I13, I20-I51)	807	0	0	0	0	1	1	1	14	59	129	145	457	0
Acute rheumatic fever and chronic rheumatic heart disease (I00-I09)	2	0	0	0	0	0	0	0	0	0	0	1	1	0
Hypertensive heart disease (I11)	27	0	0	0	0	0	0	0	0	8	9	7	3	0
Hypertensive heart and renal disease (I13)	3	0	0	0	0	0	0	0	0	0	1	0	2	0
Ischemic heart disease (I20-I25)	571	0	0	0	0	0	0	0	8	40	94	101	328	0
All other forms of heart disease (I26-I51)	204	0	0	0	0	1	1	1	6	11	25	36	123	0
Malignant neoplasms (C00-C97)	840	0	1	0	0	0	1	7	8	65	167	221	370	0
Malignant neoplasms of lip, oral cavity and pharynx (C00-C14)	13	0	0	0	0	0	0	1	0	3	4	1	4	0
Malignant neoplasms of digestive organs (C15-C26)	238	0	0	0	0	0	0	2	2	29	47	63	95	0
Malignant neoplasms of respiratory and intrathoracic organs (C30-C39)	271	0	0	0	0	0	0	0	3	20	62	79	107	0
Malignant neoplasms of breast (C50)	0	0	0	0	0	0	0	0	0	0	0	0	0	0
Malignant neoplasms of male genital organs, (C60-C63)	48	0	0	0	0	0	1	0	0	0	6	6	35	0
Malignant neoplasms of urinary tract (C64-C68)	58	0	0	0	0	0	0	0	0	4	5	17	32	0
Malignant neoplasms of meninges, brain, and other parts of central nervous system (C70-C72)	19	0	0	0	0	0	0	1	0	1	1	8	8	0
Malignant neoplasms of lymphoid, hematopoietic, and related tissues (C81-C96)	103	0	1	0	0	0	0	1	2	3	17	26	53	0
All other and unspecified malignant neoplasms (C40-C49, C69, C73-C80, C97)	90	0	0	0	0	0	0	2	1	5	25	21	36	0
Cerebrovascular diseases (I60-I69)	125	0	0	0	0	0	1	0	1	5	14	19	85	0

TABLE F-20 (continued)
(2013 - White Males)

	Age of Decedent													
	Total	< 1	1-4	5-9	10-14	15-19	20-24	25-34	35-44	45-54	55-64	65-74	75+	Unk
Chronic lower respiratory diseases (J40-J47)	184	0	0	0	0	0	1	1	2	5	21	42	112	0
Accidents (unintentional injuries) (V01-X59, Y85-Y86)	203	0	1	1	0	5	8	31	29	39	28	17	44	0
Motor Vehicle Accidents (V02-V04, V09.0, V09.2, V12-V14, V19.0-V19.2, V19.4-V19.6, V20-V79, V80.3-V80.5, V81.0-V81.1, V82.0-V82.1, V83-V86, V87.0-V87.8, V88.0-V88.8, V89.0, V89.2)	60	0	0	1	0	5	4	6	8	13	13	7	3	0
Nontransport Accidents (W00-X59, Y86)	141	0	1	0	0	0	4	25	21	26	14	9	41	0
Diabetes mellitus (E10-E14)	93	0	0	0	0	0	0	1	3	9	21	23	36	0
Influenza and pneumonia (J10-J18)	58	0	0	0	0	0	0	1	0	2	5	4	46	0
Alzheimer's disease (G30)	52	0	0	0	0	0	0	0	0	0	0	4	48	0
Nephritis, nephrotic syndrome, and nephrosis (N00-N07, N17-N19, N25-N27)	63	0	0	0	0	0	0	0	0	3	8	9	43	0
Septicemia (A40-A41)	66	1	0	0	0	0	0	0	0	0	5	21	39	0
Intentional self-harm (suicide) (X60-X84, Y87.0)	82	0	0	0	0	0	8	10	12	19	17	5	11	0
Chronic liver disease and cirrhosis (K70, K73-K74)	49	0	0	0	0	0	0	1	2	11	13	12	10	0
Essential hypertension and hypertensive renal disease (I10, I12)	23	0	0	0	0	0	0	0	0	2	3	1	17	0
Aortic aneurysm and dissection (I71)	11	0	0	0	0	0	0	0	0	0	0	4	7	0
Assault (homicide) (X85-Y09, Y87.1)	12	0	0	0	0	0	0	1	3	5	0	3	0	0
Human immunodeficiency virus (HIV) (B20-B24)	8	0	0	0	0	0	1	1	0	2	2	1	1	0
Certain conditions originating in the perinatal period (P00-P96)	5	5	0	0	0	0	0	0	0	0	0	0	0	0
Congenital malformations, deformations, and chromosomal abnormalities (Q00-Q99)	11	2	1	1	0	0	0	2	1	1	2	0	1	0
All other causes	597	3	0	1	3	0	4	10	15	48	87	93	333	0
TOTAL	3289	11	3	3	3	6	25	67	90	275	522	624	1660	0

LCDAGEWM

Note:
*ICD Codes, Tenth Revision.

Source:
Delaware Health Statistics Center

TABLE F-21
NUMBER OF DEATHS BY AGE FOR SELECTED LEADING CAUSES OF DEATH
DELAWARE, 2013
(WHITE FEMALES)

Cause of Death*	Age of Decedent													
	Total	< 1	1-4	5-9	10-14	15-19	20-24	25-34	35-44	45-54	55-64	65-74	75+	Unk
Diseases of the heart (I00-I09, I11, I13, I20-I51)	734	1	0	1	0	0	0	4	5	28	51	81	563	0
Acute rheumatic fever and chronic rheumatic heart disease (I00-I09)	6	0	0	0	0	0	0	0	0	1	0	1	4	0
Hypertensive heart disease (I11)	29	0	0	0	0	0	0	0	2	5	5	6	11	0
Hypertensive heart and renal disease (I13)	2	0	0	0	0	0	0	0	0	0	0	0	2	0
Ischemic heart disease (I20-I25)	471	0	0	0	0	0	0	1	2	16	30	56	366	0
All other forms of heart disease (I26-I51)	226	1	0	1	0	0	0	3	1	6	16	18	180	0
Malignant neoplasms (C00-C97)	717	0	1	0	1	0	1	1	16	50	137	197	313	0
Malignant neoplasms of lip, oral cavity and pharynx (C00-C14)	4	0	0	0	0	0	0	0	0	0	1	1	2	0
Malignant neoplasms of digestive organs (C15-C26)	150	0	0	0	0	0	0	0	3	5	22	45	75	0
Malignant neoplasms of respiratory and intrathoracic organs (C30-C39)	197	0	0	0	0	0	0	0	2	13	44	65	73	0
Malignant neoplasms of breast (C50)	102	0	0	0	0	0	0	0	3	10	18	25	46	0
Malignant neoplasms of female genital organs, (C51-C58)	75	0	0	0	0	0	0	0	2	10	23	19	21	0
Malignant neoplasms of urinary tract (C64-C68)	35	0	1	0	0	0	0	0	0	2	4	8	20	0
Malignant neoplasms of meninges, brain, and other parts of central nervous system (C70-C72)	27	0	0	0	0	0	1	0	2	3	8	7	6	0
Malignant neoplasms of lymphoid, hematopoietic, and related tissues (C81-C96)	59	0	0	0	0	0	0	0	1	1	9	11	37	0
All other and unspecified malignant neoplasms (C40-C49, C69, C73-C80, C97)	68	0	0	0	1	0	0	1	3	6	8	16	33	0
Cerebrovascular diseases (I60-I69)	191	0	0	0	0	0	0	2	3	5	16	22	143	0

TABLE F-21 (continued)
(2013 - White Females)

	Age of Decedent													
	Total	< 1	1-4	5-9	10-14	15-19	20-24	25-34	35-44	45-54	55-64	65-74	75+	Unk
Chronic lower respiratory diseases (J40-J47)	242	0	0	0	0	0	0	1	0	7	20	45	169	0
Accidents (unintentional injuries) (V01-X59, Y85-Y86)	131	1	1	0	1	3	4	16	18	16	18	5	48	0
Motor Vehicle Accidents (V02-V04, V09.0, V09.2, V12-V14, V19.0-V19.2, V19.4-V19.6, V20-V79, V80.3-V80.5, V81.0-V81.1, V82.0-V82.1, V83-V86, V87.0-V87.8, V88.0-V88.8, V89.0, V89.2)	28	0	1	0	1	2	2	4	5	2	4	3	4	0
Nontransport Accidents (W00-X59, Y86)	103	1	0	0	0	1	2	12	13	14	14	2	44	0
Diabetes mellitus (E10-E14)	58	0	0	0	0	0	0	0	0	2	8	14	34	0
Influenza and pneumonia (J10-J18)	75	1	0	0	0	0	0	2	0	3	5	10	54	0
Alzheimer's disease (G30)	111	0	0	0	0	0	0	0	0	0	0	6	105	0
Nephritis, nephrotic syndrome, and nephrosis (N00-N07, N17-N19, N25-N27)	66	0	0	0	0	0	0	0	0	3	3	16	44	0
Septicemia (A40-A41)	58	0	0	0	0	0	2	0	4	5	8	8	31	0
Intentional self-harm (suicide) (X60-X84, Y87.0)	30	0	0	0	1	2	1	6	1	10	7	1	1	0
Chronic liver disease and cirrhosis (K70, K73-K74)	21	0	0	0	0	0	0	1	0	1	10	4	5	0
Essential hypertension and hypertensive renal disease (I10, I12)	31	0	0	0	0	0	0	0	1	2	0	3	25	0
Aortic aneurysm and dissection (I71)	12	0	0	0	0	0	0	0	0	0	0	1	11	0
Assault (homicide) (X85-Y09, Y87.1)	8	0	0	0	0	1	0	0	4	1	1	0	1	0
Human immunodeficiency virus (HIV) (B20-B24)	0	0	0	0	0	0	0	0	0	0	0	0	0	0
Certain conditions originating in the perinatal period (P00-P96)	7	7	0	0	0	0	0	0	0	0	0	0	0	0
Congenital malformations, deformations, and chromosomal abnormalities (Q00-Q99)	11	3	1	0	0	0	0	1	1	1	1	1	2	0
All other causes	706	5	0	0	0	2	1	4	6	23	51	74	540	0
TOTAL	3209	18	3	1	3	8	9	38	59	157	336	488	2089	0

LCDAGEWF

Note:
*ICD Codes, Tenth Revision.

Source:
Delaware Health Statistics Center

TABLE F-22
NUMBER OF DEATHS BY AGE FOR SELECTED LEADING CAUSES OF DEATH
DELAWARE, 2013
(BLACK, BOTH SEXES)

Cause of Death*	Age of Decedent													
	Total	< 1	1-4	5-9	10-14	15-19	20-24	25-34	35-44	45-54	55-64	65-74	75+	Unk
Diseases of the heart (I00-I09, I11, I13, I20-I51)	284	1	1	0	0	0	0	3	17	35	49	59	119	0
Acute rheumatic fever and chronic rheumatic heart disease (I00-I09)	0	0	0	0	0	0	0	0	0	0	0	0	0	0
Hypertensive heart disease (I11)	22	0	0	0	0	0	0	1	1	9	6	3	2	0
Hypertensive heart and renal disease (I13)	1	0	0	0	0	0	0	0	1	0	0	0	0	0
Ischemic heart disease (I20-I25)	179	0	0	0	0	0	0	1	9	13	27	39	90	0
All other forms of heart disease (I26-I51)	82	1	1	0	0	0	0	1	6	13	16	17	27	0
Malignant neoplasms (C00-C97)	311	0	0	0	1	0	1	2	6	41	89	77	94	0
Malignant neoplasms of lip, oral cavity and pharynx (C00-C14)	5	0	0	0	0	0	0	0	1	0	1	2	1	0
Malignant neoplasms of digestive organs (C15-C26)	82	0	0	0	0	0	0	0	1	10	24	24	23	0
Malignant neoplasms of respiratory and intrathoracic organs (C30-C39)	85	0	0	0	0	0	0	1	1	9	28	19	27	0
Malignant neoplasms of breast (C50)	28	0	0	0	0	0	0	0	2	7	11	5	3	0
Malignant neoplasms of female genital organs, (C51-C58)	26	0	0	0	0	0	0	0	1	3	6	11	5	0
Malignant neoplasms of male genital organs, (C60-C63)	23	0	0	0	0	0	0	0	0	1	3	6	13	0
Malignant neoplasms of urinary tract (C64-C68)	11	0	0	0	0	0	0	0	0	0	2	2	7	0
Malignant neoplasms of meninges, brain, and other parts of central nervous system (C70-C72)	5	0	0	0	0	0	0	0	0	1	1	0	3	0
Malignant neoplasms of lymphoid, hematopoietic, and related tissues (C81-C96)	26	0	0	0	1	0	1	0	0	3	8	4	9	0
All other and unspecified malignant neoplasms (C40-C49, C69, C73-C80,C97)	20	0	0	0	0	0	0	1	0	7	5	4	3	0
Cerebrovascular diseases (I60-I69)	78	0	0	0	0	0	0	1	1	9	18	15	34	0

TABLE F-22 (continued)
(2013 - Black, Both Sexes)

	Age of Decedent													Unk
	Total	< 1	1-4	5-9	10-14	15-19	20-24	25-34	35-44	45-54	55-64	65-74	75+	
Chronic lower respiratory diseases (J40-J47)	49	0	0	0	1	0	1	0	0	3	4	9	31	0
Accidents (unintentional injuries) (V01-X59, Y85-Y86)	55	0	0	0	1	2	6	11	9	11	4	4	7	0
Motor Vehicle Accidents (V02-V04, (V09.0,V09.2,V12-V14, V19.0-V19.2, V19.4-V19.6,V20-V79, V80.3-V80.5, V81.0-V81.1, V82.0-V82.1, V83-V86, V87.0-V87.8, V88.0-V88.8,V89.0,V89.2)	21	0	0	0	1	2	4	3	4	4	1	1	1	0
Nontransport Accidents (W00-X59, Y86)	34	0	0	0	0	0	2	8	5	7	3	3	6	0
Diabetes mellitus (E10-E14)	62	0	0	0	0	0	0	2	1	4	13	13	29	0
Influenza and pneumonia (J10-J18)	17	0	0	0	0	0	0	0	0	0	4	3	10	0
Alzheimer's disease (G30)	27	0	0	0	0	0	0	0	0	0	0	2	25	0
Nephritis, nephrotic syndrome, and nephrosis (N00-N07, N17-N19, N25-N27)	44	0	0	0	0	0	0	1	2	6	9	10	16	0
Septicemia (A40-A41)	28	0	0	0	0	0	0	1	1	3	9	4	10	0
Intentional self-harm (suicide) (X60-X84, Y87.0)	8	0	0	0	0	1	1	2	1	1	1	1	0	0
Chronic liver disease and cirrhosis (K70, K73-K74)	12	0	0	0	0	0	0	0	0	6	1	4	1	0
Essential hypertension and hypertensive renal disease (I10, I12)	13	0	0	0	0	0	0	0	0	2	4	2	5	0
Aortic aneurysm and dissection (I71)	7	0	0	0	0	0	0	0	0	0	2	0	5	0
Assault (homicide) (X85-Y09, Y87.1)	32	0	0	0	0	9	7	10	1	3	1	0	1	0
Human immunodeficiency virus (HIV) (B20-B24)	27	0	0	0	0	0	0	1	2	13	7	2	2	0
Certain conditions originating in the perinatal period (P00-P96)	22	22	0	0	0	0	0	0	0	0	0	0	0	0
Congenital malformations, deformations, and chromosomal abnormalities (Q00-Q99)	4	1	1	0	0	0	0	0	1	1	0	0	0	0
All other causes	215	10	2	2	1	1	2	6	11	16	37	38	89	0
TOTAL	1295	34	4	2	4	13	18	40	53	154	252	243	478	0

LCDAGBLK

Note:
*ICD Codes, Tenth Revision.

Source:
Delaware Health Statistics Center

TABLE F-23
NUMBER OF DEATHS BY AGE FOR SELECTED LEADING CAUSES OF DEATH
DELAWARE, 2013
(BLACK MALES)

Cause of Death*	Age of Decedent													
	Total	< 1	1-4	5-9	10-14	15-19	20-24	25-34	35-44	45-54	55-64	65-74	75+	Unk
Diseases of the heart (I00-I09, I11, I13, I20-I51)	133	1	1	0	0	0	0	2	10	19	32	28	40	0
Acute rheumatic fever and chronic rheumatic heart disease (I00-I09)	0	0	0	0	0	0	0	0	0	0	0	0	0	0
Hypertensive heart disease (I11)	10	0	0	0	0	0	0	1	1	3	2	2	1	0
Hypertensive heart and renal disease (I13)	1	0	0	0	0	0	0	0	1	0	0	0	0	0
Ischemic heart disease (I20-I25)	82	0	0	0	0	0	0	1	6	7	21	20	27	0
All other forms of heart disease (I26-I51)	40	1	1	0	0	0	0	2	9	9	6	12	12	0
Malignant neoplasms (C00-C97)	150	0	0	0	0	0	0	0	2	18	46	36	48	0
Malignant neoplasms of lip, oral cavity and pharynx (C00-C14)	4	0	0	0	0	0	0	0	1	0	1	2	0	0
Malignant neoplasms of digestive organs (C15-C26)	45	0	0	0	0	0	0	0	1	5	15	14	10	0
Malignant neoplasms of respiratory and intrathoracic organs (C30-C39)	47	0	0	0	0	0	0	0	0	5	19	9	14	0
Malignant neoplasms of breast (C50)	1	0	0	0	0	0	0	0	0	1	0	0	0	0
Malignant neoplasms of male genital organs, (C60-C63)	23	0	0	0	0	0	0	0	0	1	3	6	13	0
Malignant neoplasms of urinary tract (C64-C68)	4	0	0	0	0	0	0	0	0	0	1	0	3	0
Malignant neoplasms of meninges, brain, and other parts of central nervous system (C70-C72)	2	0	0	0	0	0	0	0	0	1	0	0	1	0
Malignant neoplasms of lymphoid, hematopoietic, and related tissues (C81-C96)	13	0	0	0	0	0	0	0	0	2	4	2	5	0
All other and unspecified malignant neoplasms (C40-C49, C69, C73-C80, C97)	11	0	0	0	0	0	0	0	0	3	3	3	2	0
Cerebrovascular diseases (I60-I69)	38	0	0	0	0	0	0	1	0	4	11	9	13	0

TABLE F-23 (continued)
(2013 - Black Males)

	Age of Decedent													
	Total	< 1	1-4	5-9	10-14	15-19	20-24	25-34	35-44	45-54	55-64	65-74	75+	Unk
Chronic lower respiratory diseases (J40-J47)	23	0	0	0	1	0	0	0	0	1	1	4	16	0
Accidents (unintentional injuries) (V01-X59, Y85-Y86)	37	0	0	0	1	2	4	10	6	5	4	3	2	0
Motor Vehicle Accidents (V02-V04, (V09.0,V09.2,V12-V14, V19.0-V19.2, V19.4-V19.6,V20-V79, V80.3-V80.5, V81.0-V81.1, V82.0-V82.1, V83-V86, V87.0-V87.8, V88.0-V88.8,V89.0,V89.2)	16	0	0	0	1	2	3	3	3	2	1	1	0	0
Nontransport Accidents (W00-X59, Y86)	21	0	0	0	0	0	1	7	3	3	3	2	2	0
Diabetes mellitus (E10-E14)	33	0	0	0	0	0	0	2	1	1	6	7	16	0
Influenza and pneumonia (J10-J18)	7	0	0	0	0	0	0	0	0	0	2	2	3	0
Alzheimer's disease (G30)	9	0	0	0	0	0	0	0	0	0	0	2	7	0
Nephritis, nephrotic syndrome, and nephrosis (N00-N07, N17-N19, N25-N27)	21	0	0	0	0	0	0	1	0	5	8	2	5	0
Septicemia (A40-A41)	8	0	0	0	0	0	0	0	1	1	2	0	4	0
Intentional self-harm (suicide) (X60-X84, Y87.0)	8	0	0	0	0	1	1	2	1	1	1	1	0	0
Chronic liver disease and cirrhosis (K70, K73-K74)	8	0	0	0	0	0	0	0	0	2	1	4	1	0
Essential hypertension and hypertensive renal disease (I10, I12)	3	0	0	0	0	0	0	0	0	0	1	1	1	0
Aortic aneurysm and dissection (I71)	5	0	0	0	0	0	0	0	0	0	2	0	3	0
Assault (homicide) (X85-Y09, Y87.1)	29	0	0	0	0	9	7	8	1	3	1	0	0	0
Human immunodeficiency virus (HIV) (B20-B24)	20	0	0	0	0	0	0	0	2	8	6	2	2	0
Certain conditions originating in the perinatal period (P00-P96)	16	16	0	0	0	0	0	0	0	0	0	0	0	0
Congenital malformations, deformations, and chromosomal abnormalities (Q00-Q99)	0	0	0	0	0	0	0	0	0	0	0	0	0	0
All other causes	104	7	0	2	1	1	0	2	7	8	20	17	39	0
TOTAL	652	24	1	2	3	13	12	28	31	76	144	118	200	0

LCDAGEBM

Note:
*ICD Codes, Tenth Revision.

Source:
Delaware Health Statistics Center

TABLE F-24
NUMBER OF DEATHS BY AGE FOR SELECTED LEADING CAUSES OF DEATH
DELAWARE, 2013
(BLACK FEMALES)

Cause of Death*	Age of Decedent													
	Total	< 1	1-4	5-9	10-14	15-19	20-24	25-34	35-44	45-54	55-64	65-74	75+	Unk
Diseases of the heart (I00-I09, I11, I13, I20-I51)	151	0	0	0	0	0	0	1	7	16	17	31	79	0
Acute rheumatic fever and chronic rheumatic heart disease (I00-I09)	0	0	0	0	0	0	0	0	0	0	0	0	0	0
Hypertensive heart disease (I11)	12	0	0	0	0	0	0	0	0	6	4	1	1	0
Hypertensive heart and renal disease (I13)	0	0	0	0	0	0	0	0	0	0	0	0	0	0
Ischemic heart disease (I20-I25)	97	0	0	0	0	0	0	0	3	6	6	19	63	0
All other forms of heart disease (I26-I51)	42	0	0	0	0	0	0	1	4	4	7	11	15	0
Malignant neoplasms (C00-C97)	161	0	0	0	1	0	1	2	4	23	43	41	46	0
Malignant neoplasms of lip, oral cavity and pharynx (C00-C14)	1	0	0	0	0	0	0	0	0	0	0	0	1	0
Malignant neoplasms of digestive organs (C15-C26)	37	0	0	0	0	0	0	0	0	5	9	10	13	0
Malignant neoplasms of respiratory and intrathoracic organs (C30-C39)	38	0	0	0	0	0	0	1	1	4	9	10	13	0
Malignant neoplasms of breast (C50)	27	0	0	0	0	0	0	0	2	6	11	5	3	0
Malignant neoplasms of female genital organs, (C51-C58)	26	0	0	0	0	0	0	0	1	3	6	11	5	0
Malignant neoplasms of urinary tract (C64-C68)	7	0	0	0	0	0	0	0	0	0	1	2	4	0
Malignant neoplasms of meninges, brain, and other parts of central nervous system (C70-C72)	3	0	0	0	0	0	0	0	0	0	1	0	2	0
Malignant neoplasms of lymphoid, hematopoietic, and related tissues (C81-C96)	13	0	0	0	1	0	1	0	0	1	4	2	4	0
All other and unspecified malignant neoplasms (C40-C49, C69, C73-C80,C97)	9	0	0	0	0	0	0	1	0	4	2	1	1	0
Cerebrovascular diseases (I60-I69)	40	0	0	0	0	0	0	0	1	5	7	6	21	0

TABLE F-24 (continued)
(2013 - Black Females)

	Age of Decedent													
	Total	< 1	1-4	5-9	10-14	15-19	20-24	25-34	35-44	45-54	55-64	65-74	75+	Unk
Chronic lower respiratory diseases (J40-J47)	26	0	0	0	0	0	1	0	0	2	3	5	15	0
Accidents (unintentional injuries) (V01-X59, Y85-Y86)	18	0	0	0	0	0	2	1	3	6	0	1	5	0
Motor Vehicle Accidents (V02-V04, V09.0,V09.2,V12-V14, V19.0-V19.2, V19.4-V19.6,V20-V79, V80.3-V80.5, V81.0-V81.1, V82.0-V82.1, V83-V86, V87.0-V87.8, V88.0-V88.8,V89.0,V89.2)	5	0	0	0	0	0	1	0	1	2	0	0	1	0
Nontransport Accidents (W00-X59, Y86)	13	0	0	0	0	0	1	1	2	4	0	1	4	0
Diabetes mellitus (E10-E14)	29	0	0	0	0	0	0	0	0	3	7	6	13	0
Influenza and pneumonia (J10-J18)	10	0	0	0	0	0	0	0	0	0	2	1	7	0
Alzheimer's disease (G30)	18	0	0	0	0	0	0	0	0	0	0	0	18	0
Nephritis, nephrotic syndrome, and nephrosis (N00-N07, N17-N19, N25-N27)	23	0	0	0	0	0	0	0	2	1	1	8	11	0
Septicemia (A40-A41)	20	0	0	0	0	0	0	1	0	2	7	4	6	0
Intentional self-harm (suicide) (X60-X84, Y87.0)	0	0	0	0	0	0	0	0	0	0	0	0	0	0
Chronic liver disease and cirrhosis (K70, K73-K74)	4	0	0	0	0	0	0	0	0	4	0	0	0	0
Essential hypertension and hypertensive renal disease (I10, I12)	10	0	0	0	0	0	0	0	0	2	3	1	4	0
Aortic aneurysm and dissection (I71)	2	0	0	0	0	0	0	0	0	0	0	0	2	0
Assault (homicide) (X85-Y09, Y87.1)	3	0	0	0	0	0	0	2	0	0	0	0	1	0
Human immunodeficiency virus (HIV) (B20-B24)	7	0	0	0	0	0	0	1	0	5	1	0	0	0
Certain conditions originating in the perinatal period (P00-P96)	6	6	0	0	0	0	0	0	0	0	0	0	0	0
Congenital malformations, deformations, and chromosomal abnormalities (Q00-Q99)	4	1	1	0	0	0	0	0	1	1	0	0	0	0
All other causes	111	3	2	0	0	0	2	4	4	8	17	21	50	0
TOTAL	643	10	3	0	1	0	6	12	22	78	108	125	278	0

Note:
*ICD Codes, Tenth Revision.

LCDAGEBF

Source:
Delaware Health Statistics Center

TABLE F-25
HIV INFECTION/AIDS¹ DEATHS BY COUNTY, RACE, HISPANIC² ORIGIN AND SEX
U.S., DELAWARE, AND COUNTIES, 1999-2013

Area/ Race	1999	2000	2001	2002	2003	2004	2005	2006	2007	2008	2009	2010	2011	2012	2013
Delaware	65	68	67	70	80	58	63	53	55	58	41	46	36	36	36
Males	49	46	47	51	58	36	43	33	33	27	27	33	28	24	28
White	14	11	10	14	18	7	8	9	13	11	5	7	7	5	8
Black	34	35	37	37	40	29	35	24	20	16	22	26	21	19	20
Females	16	22	20	19	22	22	20	20	22	31	14	13	8	12	8
White	2	2	1	6	3	6	2	1	1	6	2	4	0	3	0
Black	14	20	19	13	19	16	18	19	21	25	12	9	8	9	7
Kent	8	4	9	4	8	8	5	11	9	8	5	10	5	8	4
Males	5	0	5	4	7	5	2	7	5	2	5	6	5	6	4
White	3	0	2	0	2	2	0	1	2	1	2	2	2	2	1
Black	2	0	3	4	5	3	2	6	3	1	3	4	3	4	3
Females	3	4	4	0	1	3	3	4	4	6	0	4	0	2	0
White	0	2	0	0	1	0	0	0	0	1	0	0	0	0	0
Black	3	2	4	0	0	3	3	4	4	5	0	4	0	2	0
New Castle	45	54	52	56	69	46	51	34	39	42	34	31	25	27	27
Males	34	37	38	40	49	29	35	19	21	17	21	23	18	17	19
White	7	6	6	9	15	4	6	5	6	4	2	2	4	3	4
Black	27	31	32	31	34	25	29	14	15	13	19	21	14	14	15
Females	11	17	14	16	20	17	16	15	18	25	13	8	7	10	8
White	2	0	1	4	2	5	2	1	1	5	1	4	0	3	0
Black	9	17	13	12	18	12	14	14	17	20	12	4	7	7	7
Wilmington	23	35	37	28	43	25	33	19	22	29	27	19	15	15	18
Males	20	25	28	22	30	15	21	7	10	13	16	16	9	9	13
White	2	4	3	4	5	0	2	0	0	1	1	0	0	2	1
Black	18	21	25	18	25	15	19	7	10	12	15	16	9	7	12
Females	3	10	9	6	13	10	12	12	12	16	11	3	6	6	5
White	0	0	1	0	0	1	1	1	1	3	1	1	0	0	0
Black	3	10	8	6	13	9	11	11	11	13	10	2	6	6	4
Bal of NCCo	22	19	15	28	26	21	18	15	17	13	7	12	10	12	9
Males	14	12	10	18	19	14	14	12	11	4	5	7	9	8	6
White	5	2	3	5	10	4	4	5	6	3	1	2	4	1	3
Black	9	10	7	13	9	10	10	7	5	1	4	5	5	7	3
Females	8	7	5	10	7	7	4	3	6	9	2	5	1	4	3
White	2	0	0	4	2	4	1	0	0	2	0	3	0	3	0
Black	6	7	5	6	5	3	3	3	6	7	2	2	1	1	3
Sussex	12	10	6	10	3	4	7	8	7	8	2	5	6	1	5
Males	10	9	4	7	2	2	6	7	7	8	1	4	5	1	5
White	4	5	2	5	1	1	2	3	5	6	1	3	1	0	3
Black	5	4	2	2	1	1	4	4	2	2	0	1	4	1	2
Females	2	1	2	3	1	2	1	1	0	0	1	1	1	0	0
White	0	0	0	2	0	1	0	0	0	0	1	0	0	0	0
Black	2	1	2	1	1	1	1	1	0	0	0	1	1	0	0
Hispanic	1	1	3	4	2	1	2	1	1	1	1	1	2	0	1
Males	1	1	2	4	1	0	2	0	0	1	1	1	2	0	0
Females	0	0	1	0	1	1	0	1	1	0	0	0	0	0	1

Notes:

1. See Table F-12 for ICD-9 and ICD-10 Codes.
2. People of Hispanic origin may be of any race. See Hispanic Origin in the Technical Notes.

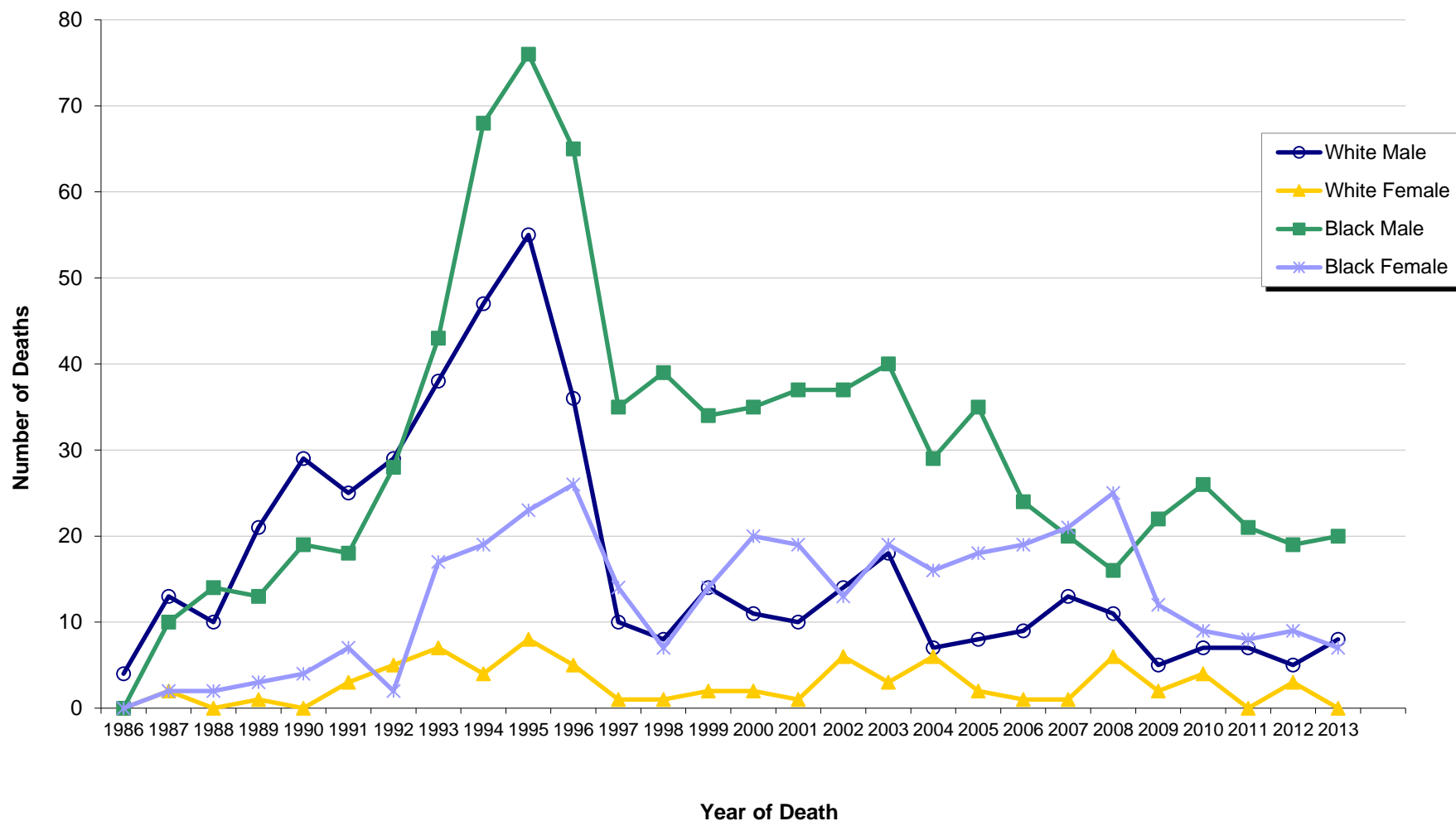
AIDS

Sources:

Delaware Health Statistics Center
National Center for Health Statistics

**Figure F-3
Number of HIV Deaths by Race and Sex**

Delaware, 1986-2013



Source: Delaware Health Statistics Center

TABLE F-26
NUMBER AND PERCENT OF DEATHS BY METHOD OF DISPOSITION AND RACE
DELAWARE, COUNTIES AND CITY OF WILMINGTON, 2013

Area/ Method of Disposition	Race							
	All Races		White		Black		Other	
	Number	Percent	Number	Percent	Number	Percent	Number	Percent
Delaware	7967	100.0	6498	100.0	1295	100.0	174	100.0
Burial	3946	49.5	3047	46.9	824	63.6	75	43.1
Cremation	3601	45.2	3071	47.3	441	34.1	89	51.1
Donation	73	0.9	72	1.1	0	0.0	1	0.6
Entombment	181	2.3	174	2.7	6	0.5	1	0.6
Removal from State	136	1.7	109	1.7	21	1.6	6	3.4
Unknown	30	0.4	25	0.4	3	0.2	2	1.1
Kent	1422	100.0	1128	100.0	250	100.0	44	100.0
Burial	755	53.1	567	50.3	167	66.8	21	47.7
Cremation	624	43.9	524	46.5	79	31.6	21	47.7
Donation	6	0.4	5	0.4	0	0.0	1	2.3
Entombment	13	0.9	12	1.1	1	0.4	0	0.0
Removal from State	20	1.4	17	1.5	2	0.8	1	2.3
Unknown	4	0.3	3	0.3	1	0.4	0	0.0
New Castle	4338	100.0	3392	100.0	847	100.0	99	100.0
Burial	2188	50.4	1631	48.1	514	60.7	43	43.4
Cremation	1876	43.2	1514	44.6	311	36.7	51	51.5
Donation	38	0.9	38	1.1	0	0.0	0	0.0
Entombment	153	3.5	147	4.3	5	0.6	1	1.0
Removal from State	72	1.7	52	1.5	16	1.9	4	4.0
Unknown	11	0.3	10	0.3	1	0.1	0	0.0
Wilmington	651	100.0	273	100.0	364	100.0	14	100.0
Burial	344	52.8	123	45.1	214	58.8	7	50.0
Cremation	266	40.9	120	44.0	141	38.7	5	35.7
Donation	3	0.5	3	1.1	0	0.0	0	0.0
Entombment	26	4.0	23	8.4	3	0.8	0	0.0
Removal from State	11	1.7	4	1.5	5	1.4	2	14.3
Unknown	1	0.2	0	0.0	1	0.3	0	0.0
Balance of NC County	3687	100.0	3119	100.0	483	100.0	85	100.0
Burial	1844	50.0	1508	48.3	300	62.1	36	42.4
Cremation	1610	43.7	1394	44.7	170	35.2	46	54.1
Donation	35	0.9	35	1.1	0	0.0	0	0.0
Entombment	127	3.4	124	4.0	2	0.4	1	1.2
Removal from State	61	1.7	48	1.5	11	2.3	2	2.4
Unknown	10	0.3	10	0.3	0	0.0	0	0.0
Sussex	2207	100.0	1978	100.0	198	100.0	31	100.0
Burial	1003	45.4	849	42.9	143	72.2	11	35.5
Cremation	1101	49.9	1033	52.2	51	25.8	17	54.8
Donation	29	1.3	29	1.5	0	0.0	0	0.0
Entombment	15	0.7	15	0.8	0	0.0	0	0.0
Removal from State	44	2.0	40	2.0	3	1.5	1	3.2
Unknown	15	0.7	12	0.6	1	0.5	2	6.5

DISPRACE

Note:
Percentages are calculated based upon the total number of deaths in each race category.

Source:
Delaware Health Statistics Center

TABLE F-27
LIFE EXPECTANCY AT BIRTH* BY RACE AND SEX

DELAWARE, 1993-2013

Year	Race and Sex								
	All Races			White			Black		
	Both Sexes	Male	Female	Both Sexes	Male	Female	Both Sexes	Male	Female
2013	78.9	76.2	81.5	79.3	76.7	81.8	76.8	73.5	79.7
2012	79.5	77.0	81.8	79.7	77.3	81.9	77.8	74.3	81.1
2011	79.1	76.6	81.5	79.4	77.0	81.6	77.3	73.7	80.6
2010	79.1	76.4	81.7	79.4	76.9	81.7	76.7	72.5	80.7
2009	78.9	76.3	81.4	79.6	77.1	82.1	76.0	72.7	79.0
2008	78.3	75.7	80.8	78.9	76.3	81.4	75.7	72.7	78.4
2007	78.8	76.0	81.5	79.2	76.5	81.9	76.2	72.9	79.3
2006	78.4	75.7	81.0	79.1	76.4	81.7	74.8	71.4	77.8
2005	77.7	75.0	80.2	78.4	75.7	81.0	74.1	71.3	76.6
2004	77.8	74.9	80.5	78.3	75.5	80.9	73.8	70.4	77.0
2003	76.9	74.5	80.0	78.1	75.3	80.7	72.6	69.2	75.8
2002	77.3	74.6	79.8	77.8	75.4	80.1	73.8	69.5	77.9
2001	76.3	73.9	78.7	77.1	74.6	79.5	72.1	69.5	74.4
2000	76.5	73.9	79.0	77.1	74.5	79.6	72.5	69.4	75.5
1999	76.8	73.9	79.6	77.6	74.7	80.3	72.6	68.8	76.2
1998	75.9	73.3	78.4	77.0	74.5	79.4	70.3	66.9	73.5
1997	75.8	73.3	78.2	76.7	74.2	79.1	71.0	68.3	73.5
1996	75.4	72.5	78.1	76.7	73.9	79.4	68.8	65.2	72.2
1995	75.5	72.5	78.4	76.8	74.2	79.4	68.9	64.4	73.5
1994	75.1	71.4	78.7	76.1	72.6	79.6	69.5	65.0	74.1
1993	75.2	71.9	78.5	76.5	73.6	79.3	68.5	63.4	73.6

LIFE_TB1

Note:

*Life expectancy at birth is the average expected lifetime of people born in the listed year.

Source:

Delaware Health Statistics Center

TABLE F-28
AVERAGE REMAINING YEARS OF LIFE* BY AGE, RACE, AND SEX

DELAWARE, 2013

Age Group	Race and Sex								
	All Races			White			Black		
	Both Sexes	Male	Female	Both Sexes	Male	Female	Both Sexes	Male	Female
0-5	78.9	76.2	81.5	79.3	76.7	81.8	76.8	73.5	79.7
5-10	74.5	71.8	77.0	74.6	72.0	77.2	72.7	69.7	75.4
10-15	69.5	66.9	72.0	69.7	67.0	72.2	67.8	64.8	70.4
15-20	64.6	61.9	67.1	64.7	62.1	67.3	62.8	59.9	65.4
20-25	59.7	57.1	62.2	59.8	57.2	62.4	58.1	55.3	60.4
25-30	55.0	52.5	57.3	55.1	52.5	57.6	53.4	50.7	55.6
30-35	50.3	47.8	52.6	50.4	47.9	52.8	48.8	46.2	50.8
35-40	45.6	43.3	47.8	45.8	43.3	48.1	44.0	41.6	46.0
40-45	41.0	38.6	43.1	41.1	38.8	43.4	39.4	37.0	41.4
45-50	36.3	34.1	38.4	36.5	34.2	38.7	34.8	32.5	36.7
50-55	31.9	29.8	33.9	32.1	29.9	34.2	30.4	28.2	32.2
55-60	27.8	25.7	29.6	27.9	25.9	29.8	26.5	24.2	28.3
60-65	23.9	22.0	25.5	24.0	22.1	25.7	22.8	20.8	24.3
65-70	20.2	18.5	21.6	20.2	18.6	21.7	19.5	17.6	20.8
70-75	16.6	15.1	17.8	16.6	15.1	17.9	16.3	14.5	17.6
75-80	13.4	12.0	14.6	13.4	12.0	14.5	13.6	11.6	14.9
80-85	10.5	9.3	11.4	10.4	9.2	11.3	11.4	9.7	12.4
85+	8.2	7.1	8.8	8.0	7.0	8.6	9.3	7.8	10.1

LIFE_TB2

Note:

*Average number of years of life remaining at the beginning of the age interval.

Source:

Delaware Health Statistics Center

TABLE F-29
MATERNAL DEATHS

DELAWARE AND COUNTIES, 1986-2013

Year	Area			
	Delaware	Kent	New Castle	Sussex
2013	0	0	0	0
2012	2	0	0	2
2011	1	0	0	1
2010	2	0	0	2
2009	4	1	3	0
2008	3	1	2	0
2007	1	0	1	0
2006	1	0	1	0
2005	3	0	3	0
2004	1	0	1	0
2003	2	0	2	0
2002	0	0	0	0
2001	2	0	1	1
2000	3	1	2	0
1999	1	0	1	0
1998	2	0	2	0
1997	1	0	1	0
1996	0	0	0	0
1995	0	0	0	0
1994	0	0	0	0
1993	0	0	0	0
1992	0	0	0	0
1991	1	0	0	1
1990	0	0	0	0
1989	2	0	1	1
1988	1	0	1	0

MATERNAL

Note:

Prior to 1999, maternal deaths included ICD-9 categories 630-676. For 1999 and later, maternal deaths include ICD-10 categories O00-O95, O98-O99, and A34.

Source:

Delaware Health Statistics Center

TABLE F-30
 FIVE-YEAR AGE-ADJUSTED MORTALITY RATES FOR SELECTED CAUSES OF DEATH
 DELAWARE AND COUNTIES, 2009-2013

LEADING CAUSES OF DEATH	AREA				RACE	
	DE	Kent	NCC	Sussex	White	Black
Malignant neoplasms	173.8	199.6	175.8	158.0	172.4	197.9
Diseases of the heart	162.7	207.1	156.0	153.6	160.1	185.6
Chronic lower respiratory diseases	41.0	50.6	40.5	37.3	43.0	33.3
Cerebrovascular diseases	36.9	39.0	42.6	27.3	34.7	48.9
Dementia	38.4	41.7	46.0	25.1	38.5	41.2
Accidents (unintentional injuries)	37.8	38.7	35.7	44.9	43.0	26.5
Diabetes mellitus	20.0	23.7	21.1	16.1	17.1	39.1
Alzheimer's disease	17.3	22.0	15.7	18.0	17.2	19.9
Nephritis, nephrotic syndrome, and nephrosis	14.6	14.5	15.8	12.7	12.8	25.7
Influenza and pneumonia	11.9	13.8	12.9	9.4	12.1	11.7
Septicemia	11.4	17.2	10.9	9.1	10.8	15.3
Intentional self-harm (suicide)	12.0	13.0	11.3	12.9	14.7	5.1
Other diseases of respiratory system	9.2	12.2	9.6	7.4	9.6	7.6
Chronic liver disease and cirrhosis	8.1	8.2	7.2	9.9	8.7	6.4
Certain conditions originating in the perinatal period	5.8	4.9	7.2	2.8	2.7	12.5
Assault (homicide)	6.1	3.8	7.9	3.0	3.2	15.2
Parkinson's disease	6.2	5.4	6.9	5.6	6.9	NA
Human immunodeficiency virus (HIV)	4.0	3.7	4.9	NA	1.2	15.9
Essential hypertension and hypertensive renal disease	5.0	8.1	4.6	4.2	4.6	7.4
Pneumonitis due to solids and liquids	4.3	3.6	4.6	4.2	4.3	4.2
Aortic aneurysm and dissection	3.1	4.3	3.1	2.4	3.0	3.8
Congenital malformations, deformations, and chromosomal abnormalities	2.9	2.8	2.9	3.4	3.3	2.1

AA DR

Notes:

1. Rates per 100,000, adjusted to U.S. 2000 population.
2. See Appendix E for ICD-10 cause of death codes.
3. "NA" indicates rate does not meet standards of reliability or precision; based on fewer than 20 deaths in the numerator.

Source:

Delaware Health Statistics Center

TABLE F-31
FIVE-YEAR AGE-ADJUSTED MORTALITY RATES FOR SELECTED LEADING CAUSES OF DEATH

DELAWARE AND COUNTIES, 1993-2013

Cause of Death/ Area	1993 -1997	1994 -1998	1995 -1999	1996 -2000	1997 -2001	1998 -2002	1999 -2003	2000 -2004	2001 -2005	2002 -2006	2003 -2007	2004 -2008	2005 -2009	2006 -2010	2007 -2011	2008 -2012	2009 -2013
Diseases of the heart																	
Delaware	301.5	292.1	283.6	275.1	267.4	257.5	252.3	244.2	236.7	223.9	215.1	201.7	190.0	178.8	172.6	165.6	162.7
Kent	317.0	313.5	312.7	308.3	304.4	296.9	291.0	279.6	275.3	267.2	262.7	251.6	243.1	233.7	223.9	211.3	207.1
New Castle	296.8	287.7	276.5	267.1	259.7	250.9	246.2	240.3	233.5	220.1	211.3	196.1	182.9	171.0	165.4	158.3	156.0
Sussex	305.0	290.6	284.5	276.3	265.3	251.9	246.4	235.3	224.0	209.7	198.6	187.4	176.6	166.1	160.8	156.7	153.6
Malignant neoplasms																	
Delaware	236.1	231.2	228.2	221.2	218.0	210.9	206.7	202.9	201.3	195.0	193.9	192.0	186.1	183.5	181.4	178.4	173.8
Kent	222.4	222.5	228.8	220.4	221.9	219.0	217.8	211.9	213.8	206.3	208.8	210.6	208.1	206.8	205.9	208.0	199.6
New Castle	238.2	235.2	230.5	223.4	219.9	212.7	206.7	203.2	202.3	195.2	192.8	192.8	187.1	184.2	184.4	181.1	175.8
Sussex	241.0	227.4	223.4	218.0	213.1	203.9	202.0	198.6	194.2	190.6	190.4	183.0	175.0	171.3	164.3	158.9	158.0
Cerebrovascular diseases																	
Delaware	52.6	52.0	50.8	51.8	51.6	51.7	51.0	48.8	45.9	44.1	41.5	39.0	38.9	38.2	37.7	37.2	36.9
Kent	70.1	69.0	63.4	60.6	55.1	55.8	53.8	50.6	49.4	48.4	42.6	39.4	41.2	39.0	36.7	39.0	39.0
New Castle	49.7	49.9	50.0	53.1	53.8	54.0	54.1	52.4	49.4	48.0	47.3	44.6	44.1	43.3	43.4	42.2	42.6
Sussex	49.4	47.1	45.5	44.1	45.0	44.3	42.9	40.6	36.8	34.1	30.0	28.5	28.4	29.0	28.8	28.5	27.3
Chronic lower respiratory diseases																	
Delaware	40.4	40.9	41.4	42.5	41.9	42.2	41.3	40.5	41.0	40.6	39.8	41.4	41.9	41.2	42.2	41.9	41.0
Kent	52.8	54.0	54.2	52.5	49.4	45.1	44.7	45.7	48.9	49.6	51.4	55.5	55.9	54.7	55.7	55.9	50.6
New Castle	37.2	38.2	39.2	41.5	41.8	41.5	40.5	40.0	39.4	39.2	39.2	41.2	41.5	40.9	42.2	41.3	40.5
Sussex	40.9	39.6	38.9	38.7	37.7	41.8	40.6	38.5	40.0	38.8	35.8	35.5	36.0	35.5	36.1	36.2	37.3
Diabetes mellitus																	
Delaware	28.0	28.4	27.9	26.9	26.9	26.4	25.8	25.8	26.0	24.6	24.0	22.8	22.0	20.6	20.7	20.6	20.0
Kent	32.7	31.2	31.9	28.8	27.6	28.3	28.0	27.3	30.6	30.5	29.0	28.6	28.8	26.3	25.2	23.9	23.7
New Castle	26.7	27.5	26.6	26.6	27.3	26.2	25.1	26.1	26.1	24.4	24.4	23.3	22.2	21.1	21.9	21.9	21.1
Sussex	28.3	28.9	28.6	26.6	25.9	26.0	26.2	24.6	23.7	21.8	20.8	18.9	18.0	16.5	16.3	16.6	16.1
Influenza and pneumonia																	
Delaware	32.2	33.1	30.6	30.2	28.7	26.2	22.2	21.1	18.7	16.9	15.0	14.7	13.8	12.9	12.4	12.1	11.9
Kent	30.3	31.5	32.9	36.5	34.1	31.7	27.3	24.9	20.4	19.9	18.1	17.3	16.1	15.0	13.8	14.4	13.8
New Castle	30.6	30.7	28.2	27.5	25.1	23.2	19.2	17.7	15.8	14.4	13.0	13.6	13.6	13.4	13.4	13.2	12.9
Sussex	37.9	40.1	35.1	33.3	34.4	30.2	26.3	26.9	23.9	20.4	17.6	15.5	13.0	11.1	10.2	9.4	9.4
Alzheimer's disease																	
Delaware	7.6	7.8	9.4	11.1	13.2	14.6	16.5	17.0	18.0	18.5	19.2	19.5	18.9	18.9	18.5	18.1	17.3
Kent	---	---	4.0	5.0	8.8	10.1	12.1	12.8	14.1	13.2	15.9	17.9	18.6	20.3	22.7	22.7	22.0
New Castle	8.9	9.7	11.7	13.8	16.0	17.4	18.8	18.1	18.1	18.4	18.6	17.8	17.1	17.0	15.5	15.3	15.7
Sussex	6.6	6.3	6.9	8.2	9.1	10.8	13.7	16.9	19.8	21.4	22.2	23.7	22.4	21.7	21.9	20.8	18.0
Nephritis, nephrotic syndrome, and nephrosis																	
Delaware	12.9	13.3	13.2	13.5	13.6	14.1	14.2	14.5	14.4	14.9	15.3	16.0	16.4	16.5	16.2	15.2	14.6
Kent	10.2	11.5	10.8	12.4	15.3	17.6	18.0	19.9	18.3	16.7	15.8	17.5	16.1	16.5	16.3	15.6	14.5
New Castle	14.2	14.5	14.5	14.2	13.8	13.6	13.4	13.8	14.0	15.0	16.3	17.4	18.0	18.3	18.0	16.6	15.8
Sussex	11.1	11.3	11.5	12.8	12.2	13.7	14.3	13.1	13.0	13.5	13.1	12.4	13.6	13.2	12.8	12.6	12.7
Septicemia																	
Delaware	11.8	12.8	13.5	14.2	14.6	15.1	14.4	15.2	15.6	16.0	16.0	15.9	15.1	14.3	13.4	13.1	12.6
Kent	11.6	12.0	11.9	13.8	14.4	15.7	17.0	18.3	17.7	18.5	18.1	18.2	17.3	18.0	17.4	16.6	17.2
New Castle	16.9	17.3	16.6	17.5	17.5	17.4	17.1	16.6	15.7	14.8	13.9	13.8	13.3	12.0	11.6	10.9	10.9
Sussex	10.8	11.6	10.9	10.8	12.0	12.8	13.0	13.3	12.8	11.4	10.2	9.4	9.2	8.6	8.2	9.0	9.1

TABLE F-31 (continued)

Cause of Death/ Area	1993 -1997	1994 -1998	1995 -1999	1996 -2000	1997 -2001	1998 -2002	1999 -2003	2000 -2004	2001 -2005	2002 -2006	2003 -2007	2004 -2008	2005 -2009	2006 -2010	2007 -2011	2008 -2012	2009 -2013
Intentional self-harm (suicide)																	
Delaware	12.0	11.2	11.2	11.0	11.2	10.7	11.1	11.1	11.0	10.2	10.4	10.6	10.7	11.0	11.3	11.9	12.0
Kent	11.6	11.4	11.9	12.6	12.1	11.7	11.5	10.5	10.1	10.3	9.8	10.3	11.2	11.2	11.3	12.4	13.0
New Castle	11.3	10.2	10.1	9.8	10.3	9.9	10.7	11.0	11.2	10.0	10.4	10.3	10.1	10.2	10.7	11.2	11.3
Sussex	14.5	14.2	14.0	13.3	12.8	12.2	11.8	11.4	10.4	10.8	11.0	11.8	12.1	13.5	13.1	13.5	12.9
Chronic liver disease and cirrhosis																	
Delaware	9.5	9.1	9.2	9.3	9.0	9.4	9.8	9.8	9.5	9.1	8.5	8.0	8.1	8.4	8.5	8.4	8.1
Kent	10.3	10.0	9.8	10.5	10.8	11.4	12.1	11.5	10.7	10.1	9.7	8.7	9.2	9.5	9.9	8.9	8.2
New Castle	9.4	8.7	8.8	9.0	8.3	8.6	9.1	9.5	8.9	8.9	8.0	7.6	7.3	7.6	7.4	7.6	7.2
Sussex	9.0	9.4	9.5	9.0	9.7	10.1	10.5	10.1	10.5	9.3	9.2	8.7	9.0	9.3	10.1	10.0	9.9
Assault (homicide)																	
Delaware	5.2	4.9	4.7	4.2	3.6	3.7	3.5	3.8	4.5	4.9	5.0	5.9	6.1	6.1	6.1	6.5	6.1
Kent	4.1	3.4	---	---	---	---	---	---	---	3.0	3.6	4.4	4.0	4.1	3.9	3.9	3.8
New Castle	5.3	5.3	5.3	5.1	4.5	4.6	4.3	4.6	5.3	5.9	6.0	7.1	7.4	7.5	7.4	8.2	7.9
Sussex	5.6	5.0	4.6	2.8	---	---	---	---	3.6	3.3	2.9	3.2	3.6	3.5	3.7	3.6	3.0
Certain conditions originating in the perinatal period																	
Delaware	5.3	5.3	5.8	6.7	7.8	8.3	8.4	8.2	8.2	7.4	7.0	6.8	6.9	6.1	6.1	6.2	5.8
Kent	5.5	5.6	5.9	6.8	7.2	7.9	8.1	8.1	7.9	6.5	5.1	4.9	5.4	4.2	4.7	5.5	4.9
New Castle	5.5	5.1	5.9	6.9	8.2	8.8	9.2	8.7	8.7	8.1	7.8	7.6	7.8	7.1	7.4	7.5	7.4
Sussex	4.2	5.8	5.5	5.8	7.2	6.8	6.0	6.3	6.6	6.1	6.4	6.1	5.8	4.6	3.5	2.7	2.8
Congenital malformations																	
Delaware	4.4	4.1	4.1	3.9	3.7	3.5	3.4	3.4	3.1	3.1	2.8	2.8	2.6	2.9	2.8	2.9	2.9
Kent	3.6	3.5	3.3	3.2	3.3	3.9	3.5	3.4	3.0	3.4	2.8	3.2	2.8	3.4	3.2	3.1	2.8
New Castle	4.0	3.8	3.9	3.9	3.6	3.2	3.1	3.2	3.0	2.9	2.7	2.6	2.5	2.6	2.6	2.9	2.9
Sussex	6.5	5.9	5.5	4.8	4.6	4.0	3.9	3.8	3.7	3.6	3.4	3.0	2.6	3.2	3.0	2.9	3.4
Human immunodeficiency virus (HIV)																	
Delaware	16.2	14.6	12.5	9.9	8.1	8.2	8.8	8.4	8.2	7.7	7.2	6.5	6.0	5.5	5.1	4.6	4.0
Kent	10.5	9.4	8.0	5.9	5.2	4.8	5.2	5.1	5.1	5.2	5.8	5.6	5.1	5.6	4.7	4.3	3.7
New Castle	19.0	17.2	14.9	12.1	9.8	9.9	10.8	10.7	10.4	9.6	8.8	7.7	7.1	6.3	6.0	5.5	4.9
Sussex	11.0	10.0	8.3	5.9	5.2	5.8	5.5	4.3	3.7	3.9	3.5	3.9	3.8	3.4	3.2	2.5	---
Accidents (unintentional injuries)																	
Delaware	36.1	36.4	35.8	36.0	36.9	36.4	36.0	35.8	35.1	35.2	34.7	35.6	35.9	36.8	36.4	37.3	37.8
Kent	35.2	35.0	37.8	37.5	38.9	37.7	37.6	38.3	38.9	40.5	39.5	39.7	38.0	37.5	35.0	37.7	38.7
New Castle	32.4	33.4	33.4	34.0	34.5	34.6	33.7	32.3	31.6	31.8	31.6	32.7	33.2	34.2	34.4	34.9	35.7
Sussex	50.8	48.6	42.2	42.1	44.0	42.1	43.0	46.4	44.1	42.5	42.4	43.9	44.8	46.6	45.9	46.0	44.9
Essential hypertension and hypertensive renal disease																	
Delaware	3.7	4.2	4.2	4.8	5.2	5.7	5.9	6.9	7.2	6.8	6.3	6.0	5.4	5.1	5.0	4.8	5.0
Kent	5.7	5.2	4.9	4.5	5.5	6.3	6.3	7.1	8.9	9.1	7.8	7.8	7.6	7.4	7.3	7.7	8.1
New Castle	2.8	3.5	3.6	4.4	4.9	5.4	5.9	7.2	7.5	7.0	6.9	6.3	5.6	5.1	5.1	4.7	4.6
Sussex	4.6	5.5	5.6	6.1	5.7	5.9	5.6	5.9	5.4	5.0	4.4	4.4	4.1	4.0	3.8	3.7	4.2
Aortic aneurysm and dissection																	
Delaware	7.0	6.7	6.5	6.4	6.6	6.3	6.7	6.3	5.8	5.0	4.5	3.7	3.4	3.2	3.2	3.2	3.1
Kent	7.7	8.0	8.6	9.0	9.3	9.9	10.0	9.3	8.3	7.2	5.5	4.0	3.0	2.8	2.8	3.4	4.3
New Castle	6.2	6.0	5.9	5.8	6.2	5.9	6.3	5.8	5.4	4.5	3.8	3.2	3.2	3.2	3.3	3.5	3.1
Sussex	8.7	7.7	6.6	6.5	6.0	5.4	5.9	6.1	5.7	5.3	5.4	4.7	4.1	3.5	3.2	2.7	2.4

TABLE F-31 (continued)

Cause of Death/ Area	1993 -1997	1994 -1998	1995 -1999	1996 -2000	1997 -2001	1998 -2002	1999 -2003	2000 -2004	2001 -2005	2002 -2006	2003 -2007	2004 -2008	2005 -2009	2006 -2010	2007 -2011	2008 -2012	2009 -2013
Pneumonitis due to solids and liquids																	
Delaware	5.2	5.7	7.0	7.8	8.9	9.1	9.7	8.9	8.2	7.1	6.3	5.4	5.2	4.8	4.6	4.3	4.3
Kent	---	---	4.5	4.8	4.1	5.0	5.9	5.3	5.4	5.0	3.9	3.3	3.4	3.0	3.4	3.5	3.6
New Castle	6.3	6.9	8.3	8.9	10.6	10.5	10.9	9.9	9.2	7.5	6.6	5.5	5.2	4.7	4.6	4.4	4.6
Sussex	3.7	4.2	5.3	7.1	7.7	8.5	9.3	9.1	7.8	7.5	7.1	6.3	6.1	5.8	5.4	4.7	4.2
Other diseases of respiratory system																	
Delaware	7.6	7.9	7.9	8.3	8.4	8.8	8.4	8.7	8.5	8.9	8.8	9.0	8.8	8.8	9.0	9.3	9.2
Kent	5.5	6.2	7.2	9.2	8.9	9.6	9.5	9.5	9.0	10.3	10.6	10.5	10.6	11.3	11.7	12.1	12.2
New Castle	7.5	7.4	7.5	7.8	8.1	8.3	8.2	8.8	8.7	8.7	8.3	9.0	8.7	8.4	9.3	10.2	9.6
Sussex	9.3	10.1	9.3	9.3	8.9	9.4	8.4	8.3	7.6	8.4	8.6	8.3	8.3	8.3	7.2	6.7	7.4
Parkinson's disease																	
Delaware	3.4	3.8	4.0	4.6	5.1	5.5	5.5	5.4	5.7	5.5	5.6	5.6	5.6	5.2	5.7	5.8	6.2
Kent	---	---	---	---	4.3	4.6	4.7	4.1	4.7	4.6	4.4	4.4	5.5	5.1	5.2	5.3	5.4
New Castle	4.0	4.3	4.4	5.0	5.5	6.0	5.9	5.9	6.2	6.1	6.4	6.3	6.1	5.6	6.1	6.3	6.9
Sussex	2.5	2.7	3.4	4.1	4.7	5.0	4.9	5.1	5.3	4.7	4.8	5.1	4.9	4.6	5.2	5.5	5.6
Dementia																	
Delaware	5.9	6.4	5.8	6.5	7.2	8.5	9.5	10.6	12.1	16.1	19.8	24.7	30.0	34.4	36.4	38.9	38.4
Kent	6.9	7.4	6.8	8.6	8.8	12.6	13.9	14.6	13.1	14.2	15.3	20.5	26.3	30.3	35.7	40.4	41.7
New Castle	5.0	5.8	5.5	6.3	7.3	8.3	9.2	10.6	13.2	18.8	24.8	31.8	38.6	43.8	45.8	47.5	46.0
Sussex	7.5	7.1	5.9	5.8	5.9	6.7	7.7	8.6	9.7	11.7	12.2	13.4	16.1	19.8	21.1	24.5	25.1

AADR_TRND(2)

Notes:

1. Rates per 100,000, adjusted to U.S. 2000 population.
2. See Appendix E for ICD-9 and ICD-10 cause of death codes.
3. "----" indicates rate does not meet standards of reliability or precision; based on fewer than 20 deaths in the numerator.

Source:

Delaware Health Statistics Center

TABLE F-32
 FIVE-YEAR AGE-ADJUSTED MORTALITY RATES FOR SELECTED LEADING CAUSES OF DEATH BY RACE AND SEX
 DELAWARE, 1993-2013

Cause of Death/ Race-Sex	1993 -1997	1994 -1998	1995 -1999	1996 -2000	1997 -2001	1998 -2002	1999 -2003	2000 -2004	2001 -2005	2002 -2006	2003 -2007	2004 -2008	2005 -2009	2006 -2010	2007 -2011	2008 -2012	2009 -2013
Diseases of the heart																	
White	296.8	286.5	278.6	270.1	262.1	251.9	246.3	237.2	229.4	217.3	209.0	197.2	186.5	176.0	170.8	163.3	160.1
Male	378.2	363.3	348.7	341.3	328.7	312.4	303.9	294.7	283.0	268.7	261.6	248.9	234.3	222.1	217.3	208.1	203.3
Female	237.5	229.2	225.8	215.9	210.6	205.2	201.1	192.0	187.0	176.7	167.2	157.0	148.6	139.7	133.9	127.8	125.2
Black	330.7	329.4	321.5	311.9	306.3	296.9	298.4	298.7	293.4	278.4	268.3	241.3	220.1	206.0	192.0	187.9	185.6
Male	402.3	404.5	393.2	378.9	364.6	356.0	357.2	362.7	347.8	338.1	325.2	293.0	263.7	261.0	245.2	234.1	225.7
Female	279.8	276.7	271.0	264.8	263.9	254.8	257.1	252.8	253.7	235.1	224.5	202.5	186.4	166.1	152.5	154.2	154.2
Malignant neoplasms																	
White	225.6	222.9	219.7	214.1	212.8	206.7	201.6	199.2	198.0	191.7	191.7	191.5	185.3	182.8	181.2	177.1	172.4
Male	289.0	282.3	275.3	264.9	259.5	253.3	247.7	245.9	244.5	237.1	233.0	231.6	222.4	220.1	214.6	209.8	204.7
Female	186.5	186.1	185.8	182.6	182.9	176.2	171.1	167.8	166.7	160.9	163.5	163.7	159.0	156.0	157.2	153.8	149.3
Black	326.6	306.3	302.7	285.0	267.6	253.6	254.8	241.8	240.0	233.3	223.8	212.2	207.8	202.2	197.8	202.3	197.9
Male	449.2	408.4	406.7	371.3	343.0	334.0	334.1	309.9	311.5	300.6	283.3	263.4	261.0	256.4	250.0	250.5	246.0
Female	253.0	246.9	243.1	235.3	223.7	208.4	207.6	199.2	195.2	189.8	184.9	178.0	173.0	166.8	162.6	170.1	166.9
Cerebrovascular diseases																	
White	49.2	48.7	48.0	49.2	49.3	49.2	48.8	46.4	43.4	41.9	39.0	36.6	36.3	35.8	35.6	35.2	34.7
Male	52.0	51.6	50.0	50.5	52.0	50.8	50.3	48.7	47.0	42.5	38.7	35.5	34.0	33.1	34.9	35.6	35.2
Female	46.8	46.0	45.8	47.3	46.7	47.5	47.1	44.6	41.1	41.2	38.6	36.9	37.3	36.9	35.4	34.7	34.1
Black	77.5	75.2	71.0	70.7	68.6	69.9	66.8	67.2	64.5	61.1	60.2	57.8	57.3	54.3	50.9	49.4	48.9
Male	84.7	87.5	80.5	78.1	66.8	67.4	63.8	60.0	61.8	64.1	66.7	66.1	66.0	63.5	61.5	57.6	55.6
Female	71.5	65.6	62.7	64.4	67.2	68.6	66.4	68.7	64.4	58.5	55.6	52.3	51.5	47.4	43.3	43.7	44.0
Chronic lower respiratory diseases																	
White	41.9	42.1	42.5	43.5	42.7	43.1	42.2	41.3	42.3	42.0	41.4	43.1	43.8	43.1	44.4	43.9	43.0
Male	53.5	55.6	55.5	54.5	52.3	51.1	47.7	46.0	46.7	45.4	45.0	47.9	47.7	45.5	46.3	44.5	42.6
Female	36.8	36.0	36.5	38.3	38.0	38.9	39.4	38.6	39.6	39.9	38.9	39.5	41.0	41.3	43.0	43.6	43.6
Black	31.6	33.0	34.4	35.6	35.8	35.1	34.0	34.4	32.2	32.5	32.3	34.1	33.2	33.2	33.9	35.1	33.3
Male	50.2	44.3	48.7	51.1	50.9	53.0	51.9	50.3	46.3	47.7	46.6	51.4	48.7	47.3	47.6	46.6	42.5
Female	20.2	25.3	26.0	25.8	26.0	24.0	22.4	23.9	23.6	23.7	24.2	24.9	25.0	25.6	26.0	28.2	27.6
Diabetes mellitus																	
White	24.1	24.5	23.8	23.2	23.5	22.7	22.4	22.2	22.8	21.5	20.8	19.8	19.3	17.8	17.5	17.7	17.1
Male	25.6	26.2	26.6	26.0	25.7	26.0	25.8	25.7	26.3	25.5	25.4	24.0	23.1	21.5	21.2	21.1	21.3
Female	23.0	23.2	21.9	21.3	21.8	20.3	19.7	19.6	20.2	18.6	17.5	16.7	16.2	14.6	14.3	14.6	13.4
Black	56.4	57.5	58.6	55.1	53.0	54.0	50.8	51.7	50.8	47.2	46.7	44.1	40.9	38.7	41.1	38.8	39.1
Male	55.0	62.3	62.4	59.1	59.5	62.1	54.7	56.1	54.4	50.9	49.6	50.5	46.5	45.0	45.0	42.5	43.4
Female	57.1	55.7	57.0	54.0	49.9	50.2	48.4	49.1	48.6	45.7	44.7	39.9	37.0	33.9	37.3	35.6	36.3
Influenza and pneumonia																	
White	31.3	32.6	30.5	30.3	29.2	26.7	22.6	21.4	18.8	17.0	15.0	14.7	14.1	13.1	12.5	12.2	12.1
Male	38.9	41.7	38.6	38.2	36.3	33.2	27.0	26.1	22.6	20.8	18.4	17.8	17.1	16.3	15.4	15.0	14.7
Female	27.0	27.6	25.8	25.9	25.1	22.8	19.7	18.5	16.4	14.4	12.9	12.8	12.1	11.0	10.5	10.3	10.4
Black	38.2	40.4	37.8	35.0	31.7	30.1	25.5	23.1	20.1	20.3	18.2	17.4	15.6	15.2	12.6	12.0	12.2
Male	62.8	56.0	46.6	45.0	39.0	32.8	28.7	31.8	28.5	26.1	24.3	24.8	18.6	17.6	17.3	15.0	13.9
Female	25.6	24.0	23.1	21.6	17.4	16.8	14.7	14.1	12.4	12.7	11.4	10.7	9.8	9.2	9.2	10.4	10.1

TABLE F-32 (continued)

Cause of Death/ Race-Sex	1993 -1997	1994 -1998	1995 -1999	1996 -2000	1997 -2001	1998 -2002	1999 -2003	2000 -2004	2001 -2005	2002 -2006	2003 -2007	2004 -2008	2005 -2009	2006 -2010	2007 -2011	2008 -2012	2009 -2013
Alzheimer's disease																	
White	8.0	8.2	9.8	11.5	13.8	15.3	17.1	17.4	18.5	18.9	19.7	20.2	19.5	19.2	18.8	18.2	17.2
Male	6.9	6.9	8.9	10.0	12.4	14.3	15.1	14.8	15.6	16.2	17.0	17.5	17.2	16.5	15.4	14.8	14.3
Female	8.4	8.8	10.3	12.1	14.6	15.8	18.1	18.9	20.1	20.3	21.1	21.6	20.6	20.8	20.9	20.4	18.9
Black	---	---	5.8	8.2	8.8	9.8	12.7	14.1	14.4	14.5	15.7	14.5	14.8	16.6	17.2	18.7	19.9
Male	---	---	---	---	---	---	---	14.2	---	---	13.4	12.7	12.3	13.6	13.7	13.4	15.2
Female	---	---	---	8.2	8.3	8.8	12.1	13.7	15.6	15.5	16.4	14.9	15.8	17.7	18.7	6.1	6.3
Nephritis, nephrotic syndrome, and nephrosis																	
White	11.4	11.5	11.3	11.2	11.1	11.9	12.2	12.6	12.5	13.0	13.1	13.8	14.0	14.2	13.9	13.3	12.8
Male	15.1	15.7	15.2	14.9	15.2	16.7	16.4	17.4	17.5	17.6	17.6	18.0	17.5	17.5	16.6	15.5	15.0
Female	9.5	9.3	9.3	9.2	8.7	9.1	9.7	9.7	9.5	9.9	10.1	10.9	11.6	11.9	12.2	11.9	11.3
Black	27.4	24.9	24.7	28.1	28.4	31.1	31.8	30.6	28.1	27.2	27.4	28.5	31.1	32.2	32.8	31.8	30.2
Male	27.5	30.8	32.7	38.7	35.8	39.0	37.4	36.6	35.3	39.7	41.8	42.5	40.8	40.0	38.3	33.2	30.2
Female	22.6	26.1	25.9	26.1	28.9	25.7	22.4	21.9	23.5	22.2	25.1	26.5	27.5	26.6	25.7	16.0	16.4
Septicemia																	
White	13.3	13.7	13.0	13.8	14.0	14.5	14.4	14.7	13.9	13.1	12.2	12.2	11.5	10.9	10.8	10.6	10.8
Male	13.8	15.6	15.3	16.0	16.0	16.7	15.8	16.5	15.5	14.9	14.3	14.0	12.6	12.1	12.1	11.3	12.0
Female	12.9	12.5	11.5	12.7	12.9	13.4	13.6	13.6	12.9	11.9	10.7	11.0	10.8	10.1	9.8	10.3	10.0
Black	23.7	25.2	25.7	25.9	28.7	28.1	28.9	25.7	24.6	23.2	21.9	19.9	19.7	18.1	15.9	15.7	15.3
Male	31.7	33.3	30.1	32.7	34.0	31.8	33.7	28.1	25.1	23.4	21.7	19.1	18.6	17.3	15.8	16.7	14.8
Female	20.5	22.0	23.7	22.1	25.7	26.3	26.1	23.9	24.6	23.2	21.9	20.3	20.3	18.3	15.9	12.8	13.2
Intentional self-harm (suicide)																	
White	13.4	12.6	12.7	12.8	12.9	12.3	13.0	12.9	12.6	12.0	12.5	12.5	12.7	13.3	13.7	14.3	14.7
Male	22.7	21.4	21.9	21.9	21.8	21.1	21.7	21.0	21.0	19.9	19.8	20.2	20.6	21.4	21.8	23.1	23.4
Female	5.1	4.5	4.3	4.4	4.7	4.4	5.1	5.5	5.0	4.8	5.7	5.3	5.3	5.5	5.9	5.8	6.5
Black	5.8	5.4	4.9	4.1	4.8	5.1	4.9	5.6	6.1	5.2	4.6	5.4	5.6	5.4	5.3	5.8	5.1
Male	11.7	11.2	9.7	7.7	8.9	10.0	9.3	10.1	10.8	9.9	8.2	9.5	10.8	10.3	9.7	10.2	9.5
Female	---	---	---	---	---	---	---	---	---	---	---	---	---	---	---	---	---
Chronic liver disease and cirrhosis																	
White	9.1	8.9	9.1	9.5	9.0	9.5	10.0	10.0	9.8	9.7	9.0	8.6	8.8	9.0	9.1	9.1	8.7
Male	12.5	12.2	13.0	12.6	11.8	11.6	12.1	11.5	11.8	12.4	11.8	11.7	12.5	12.9	13.0	13.3	12.8
Female	6.0	5.9	5.7	6.7	6.5	7.7	8.1	8.5	8.0	7.2	6.6	5.7	5.5	5.4	5.5	5.1	4.9
Black	12.6	10.7	10.0	8.6	9.1	9.0	9.5	9.3	8.2	7.3	6.6	6.4	6.3	7.0	7.0	6.9	6.4
Male	19.2	15.8	13.1	12.1	12.2	12.8	14.0	14.5	12.1	12.2	10.9	11.0	9.9	11.5	12.0	11.1	10.0
Female	---	---	7.1	---	6.4	---	5.8	---	---	---	---	---	---	---	---	---	---
Assault (homicide)																	
White	3.5	3.2	3.1	2.4	2.2	2.2	2.0	2.1	2.6	2.5	2.4	2.9	3.0	3.0	3.2	3.3	3.2
Male	4.2	3.9	3.7	2.9	2.7	2.6	2.5	2.5	3.5	3.4	3.3	4.1	4.1	4.1	4.4	4.8	4.4
Female	2.8	2.6	2.4	1.9	1.7	1.8	1.6	1.7	1.7	1.5	1.5	1.7	1.9	1.9	2.0	1.9	2.0
Black	12.3	12.4	11.7	11.7	9.0	9.0	8.9	9.8	11.3	13.5	14.1	16.2	16.2	16.5	15.2	16.3	15.2
Male	19.8	18.9	18.8	18.2	14.4	15.0	15.9	16.9	20.2	24.6	25.8	30.1	30.7	31.1	28.7	30.5	28.0
Female	5.8	6.5	5.4	5.7	---	---	---	---	---	---	---	---	---	---	---	---	---

TABLE F-32 (continued)

Cause of Death/ Race-Sex	1993 -1997	1994 -1998	1995 -1999	1996 -2000	1997 -2001	1998 -2002	1999 -2003	2000 -2004	2001 -2005	2002 -2006	2003 -2007	2004 -2008	2005 -2009	2006 -2010	2007 -2011	2008 -2012	2009 -2013
Certain conditions originating in the perinatal period																	
White	3.2	3.2	3.3	4.2	5.1	5.8	6.2	6.2	5.7	5.1	4.8	4.5	4.2	3.6	3.4	3.2	2.7
Male	3.3	3.1	3.4	4.7	5.7	6.3	6.9	6.5	5.9	5.3	5.4	5.1	5.1	4.4	4.2	4.1	3.3
Female	3.0	3.2	3.1	3.7	4.5	5.4	5.5	5.8	5.5	4.8	4.2	3.9	3.4	2.8	2.6	2.3	2.1
Black	11.7	11.9	13.9	14.7	16.7	16.6	16.2	15.1	16.4	14.9	14.6	14.2	15.0	13.2	13.1	13.3	12.5
Male	15.7	14.0	16.4	16.8	18.8	19.0	18.9	17.1	19.1	16.8	15.7	14.8	16.0	13.8	13.4	14.2	14.6
Female	7.5	9.7	11.4	12.5	14.5	14.1	13.4	13.2	13.8	13.1	13.4	13.5	14.0	12.6	12.7	12.5	10.4
Congenital malformations																	
White	4.6	4.2	4.2	4.0	3.7	3.3	3.3	3.3	3.1	3.1	2.8	2.8	2.6	3.0	3.0	3.1	3.3
Male	4.7	4.2	4.3	4.2	3.7	3.6	3.9	3.7	3.3	3.3	3.0	2.7	2.4	2.9	2.8	2.8	3.0
Female	4.6	4.3	4.2	3.9	3.7	3.1	2.7	2.9	2.8	2.8	2.7	2.8	2.8	3.1	3.3	3.4	3.6
Black	3.2	3.4	3.4	3.5	3.9	4.0	3.6	3.7	3.6	3.3	2.9	3.0	2.6	2.5	2.4	2.5	2.1
Male	4.7	4.2	4.3	4.2	3.7	3.6	3.9	3.7	3.3	3.3	3.0	2.7	2.4	2.9	2.8	2.8	3.0
Female	4.6	4.3	4.2	3.9	3.7	3.1	2.7	2.9	2.8	2.8	2.7	2.8	2.8	3.1	3.3	3.4	3.6
Human immunodeficiency virus (HIV)																	
White	7.2	5.9	4.7	3.0	2.0	2.2	2.6	2.5	2.4	2.3	2.1	2.0	1.8	1.8	1.7	1.5	1.2
Male	12.8	10.6	8.4	5.4	3.6	3.7	4.4	3.9	3.6	3.5	3.5	3.0	2.9	2.8	2.7	2.1	1.8
Female	1.7	---	---	---	---	---	---	---	---	---	---	---	---	---	---	---	---
Black	59.3	55.5	48.8	42.0	36.4	35.6	36.4	35.5	34.3	31.5	29.4	26.3	24.1	21.6	19.6	17.6	15.9
Male	97.3	93.3	80.3	66.9	56.7	55.8	54.8	52.6	51.3	46.1	40.0	32.7	29.5	26.7	25.4	24.2	24.8
Female	27.1	23.6	22.0	20.9	19.2	18.5	21.1	21.3	20.2	19.5	20.7	21.5	19.9	17.6	15.0	20.3	14.0
Accidents (unintentional injuries)																	
White	34.8	36.2	36.1	37.3	38.2	37.5	37.2	37.5	37.4	38.0	38.3	39.9	40.6	41.5	41.7	42.6	43.0
Male	50.2	51.1	48.4	50.1	50.9	50.6	51.4	51.5	51.8	53.2	54.5	55.7	57.1	57.0	57.0	57.4	57.3
Female	20.8	22.3	24.2	25.4	26.5	25.6	24.3	24.7	24.2	24.0	23.3	25.1	25.2	27.1	27.5	28.9	29.9
Black	44.5	39.9	36.5	34.2	36.2	37.5	37.3	35.2	32.1	29.6	26.4	24.2	24.6	26.1	24.4	25.4	26.5
Male	68.2	60.9	56.7	53.0	52.8	56.6	56.0	50.3	47.0	44.3	38.2	34.4	35.7	37.2	35.2	37.6	39.2
Female	27.8	24.0	21.4	18.6	22.0	21.1	21.7	21.9	19.7	17.6	16.6	15.4	15.4	16.5	14.9	19.8	19.8
Essential hypertension and hypertensive renal disease																	
White	2.9	3.5	3.5	4.2	4.5	5.0	5.1	5.7	6.0	5.7	5.2	4.8	4.4	4.3	4.3	4.2	4.6
Male	2.9	3.7	3.8	4.3	4.4	4.7	5.0	5.3	5.6	5.5	4.8	4.4	4.5	4.2	3.8	3.8	4.2
Female	2.9	3.4	3.3	4.0	4.3	5.0	5.0	5.8	6.1	5.7	5.4	4.8	4.3	4.2	4.4	4.2	4.7
Black	9.7	9.9	9.8	10.0	10.5	11.4	12.2	15.4	16.4	15.2	14.3	14.5	11.6	9.8	9.1	8.6	7.4
Male	---	---	12.7	12.9	13.1	11.8	14.2	19.8	20.4	19.5	20.2	18.1	12.0	10.4	10.1	9.4	8.0
Female	9.7	9.4	8.4	8.1	9.2	10.9	11.0	13.1	14.3	12.5	10.3	11.7	10.4	8.4	7.6	3.5	3.8
Aortic aneurysm and dissection																	
White	7.0	6.7	6.5	6.5	6.8	6.4	6.8	6.3	5.8	5.0	4.4	3.7	3.4	3.2	3.2	3.3	3.0
Male	11.3	10.8	10.6	10.4	11.3	10.0	9.6	8.8	8.3	6.9	6.2	5.5	5.1	4.7	4.4	4.3	3.8
Female	4.3	4.1	3.9	4.0	3.9	4.2	4.8	4.4	4.0	3.6	2.9	2.3	2.1	1.9	2.2	2.4	2.4
Black	6.6	6.1	5.6	5.0	5.0	5.5	6.0	6.9	6.4	5.4	5.1	4.1	3.7	3.6	3.4	3.2	3.8
Male	---	---	---	---	---	---	---	---	---	---	---	---	---	---	---	---	---
Female	---	---	---	---	---	---	---	7.0	6.6	---	---	---	---	---	---	---	---

TABLE F-32 (continued)

Cause of Death/ Race-Sex	1993 -1997	1994 -1998	1995 -1999	1996 -2000	1997 -2001	1998 -2002	1999 -2003	2000 -2004	2001 -2005	2002 -2006	2003 -2007	2004 -2008	2005 -2009	2006 -2010	2007 -2011	2008 -2012	2009 -2013
Pneumonitis due to solids and liquids																	
White	5.0	5.4	6.8	7.5	8.5	8.9	9.4	8.6	7.8	6.8	6.1	5.4	5.1	4.8	4.7	4.4	4.3
Male	7.3	8.8	10.1	10.5	11.8	11.5	11.6	10.5	9.5	7.9	7.4	6.4	6.3	6.1	6.2	6.2	6.5
Female	4.0	3.8	5.1	5.8	6.7	7.3	8.0	7.4	6.8	5.9	5.2	4.6	4.3	3.8	3.7	3.3	2.9
Black	6.4	7.4	8.8	10.5	11.3	10.4	11.7	10.6	10.7	9.0	8.1	5.6	5.5	4.4	3.9	3.2	4.2
Male	---	---	---	15.4	19.8	17.9	19.9	18.5	18.0	15.2	12.9	---	---	9.1	---	---	7.9
Female	---	---	---	---	---	---	6.8	---	6.7	---	---	---	---	---	---	---	---
Other diseases of respiratory system																	
White	7.6	8.1	8.2	8.5	8.6	8.8	8.5	8.9	8.6	9.1	9.0	9.0	8.7	8.6	8.8	9.4	9.6
Male	10.4	10.7	10.0	10.6	10.2	9.8	9.7	10.1	10.1	11.3	11.0	10.4	10.3	10.2	9.9	11.4	12.1
Female	5.7	6.2	6.6	7.0	7.3	8.1	7.8	8.1	7.7	7.7	7.5	8.0	7.6	7.5	7.9	7.9	7.1
Black	7.6	6.7	6.1	6.9	7.1	7.9	7.3	7.4	7.1	7.0	7.4	9.3	9.8	10.1	10.4	9.2	7.6
Male	---	---	---	---	---	---	---	9.1	10.5	9.6	9.7	11.4	12.7	13.7	14.6	13.1	12.3
Female	---	---	---	7.9	8.2	7.7	6.5	6.4	---	5.5	5.9	8.0	8.3	8.2	8.0	7.1	5.4
Parkinson's disease																	
White	3.6	3.9	4.3	5.0	5.5	6.0	5.9	5.9	6.1	5.8	6.0	6.1	6.0	5.7	6.2	6.4	6.9
Male	5.9	6.1	6.0	6.8	8.0	8.5	8.7	8.9	9.1	8.8	9.0	8.8	8.4	8.0	8.0	8.2	9.1
Female	2.3	2.8	3.4	3.9	4.2	4.6	4.3	4.2	4.4	4.1	4.2	4.5	4.6	4.4	5.1	5.2	5.4
Black	---	---	---	---	---	---	---	---	---	---	---	---	---	---	---	---	---
Male	---	---	---	---	---	---	---	---	---	---	---	---	---	---	---	---	---
Female	---	---	---	---	---	---	---	---	---	---	---	---	---	---	---	---	---
Dementia																	
White	6.2	6.6	6.1	6.6	7.4	8.6	9.5	10.1	11.8	15.5	18.8	23.9	29.3	34.0	36.2	39.1	38.5
Male	7.3	7.5	7.0	7.9	7.8	7.9	8.3	8.7	9.4	12.8	15.6	20.0	24.9	29.3	31.1	33.9	33.8
Female	5.6	6.0	5.6	6.1	7.2	8.9	10.1	10.9	13.0	16.9	20.5	25.8	31.6	36.4	38.9	41.5	40.7
Black	---	---	---	6.0	5.8	8.7	10.4	15.4	16.3	23.1	30.1	34.3	37.1	40.4	41.8	41.9	41.2
Male	---	---	---	---	---	19.0	18.2	22.5	22.3	29.6	29.2	35.4	40.8	42.3	40.2	41.1	42.0
Female	---	---	---	---	---	---	---	12.5	13.5	20.1	30.2	33.8	34.9	39.1	42.3	41.8	40.0

AADR_TRND(3)

Notes:

1. Rates per 100,000, adjusted to U.S. 2000 population.
2. See Appendix E for ICD-9 and ICD-10 cause of death codes.
3. "---" indicates rate does not meet standards of reliability or precision; based on fewer than 20 deaths in the numerator.

Source:

Delaware Health Statistics Center