

Delaware Vital Statistics Annual Report, 2007



Population

Photo courtesy of the Delaware Tourism Office

Suggested citation:

Delaware Health Statistics Center. *Delaware Vital Statistics Annual Report, 2007*.
Delaware Department of Health and Social Services, Division of Public Health: 2010.

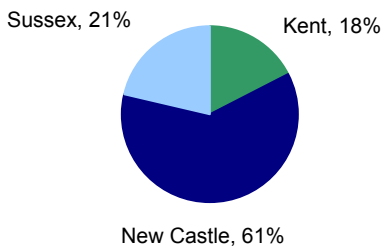
POPULATION

Each of Delaware's three counties continued their increasing population trend, though they grew at different rates. For the recent period from 2000 to 2007, county populations grew annually by 2.8 percent for Kent, 0.7 percent for New Castle, and 2.4 percent for Sussex. The overall increase for Delaware was 1.4 percent.

While Sussex County had the highest percentage of residents 65 years of age and older among the three counties (20.8% in 2007) more than half of the state's total 65+ population resided in New Castle County (see Table A-2).

Over half of Delaware's population resides in New Castle County.

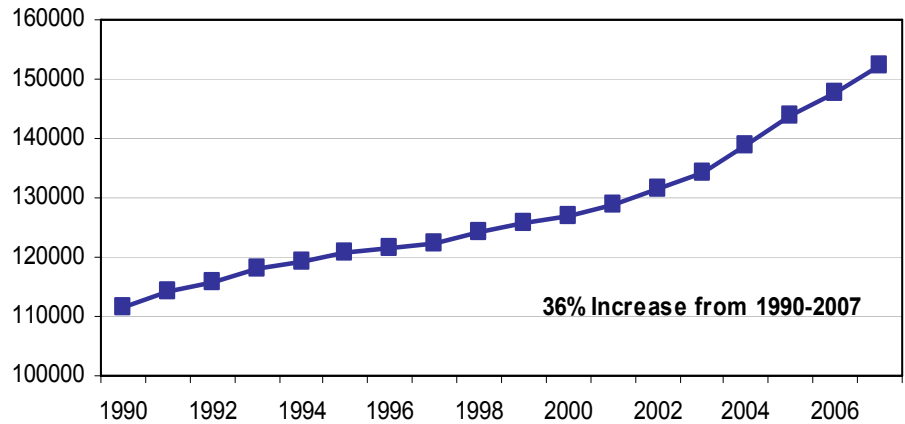
Percent of Population by County Delaware, 2007



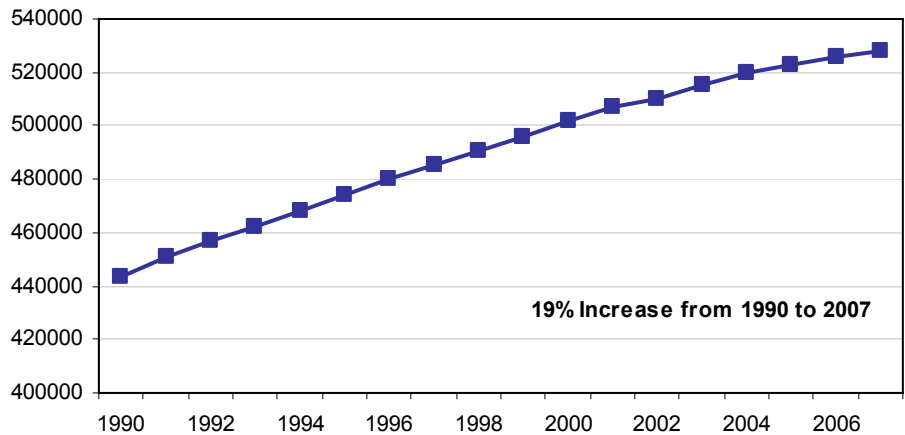
Source: Delaware Health Statistics Center

Delaware Resident Population by County, 1990-2007

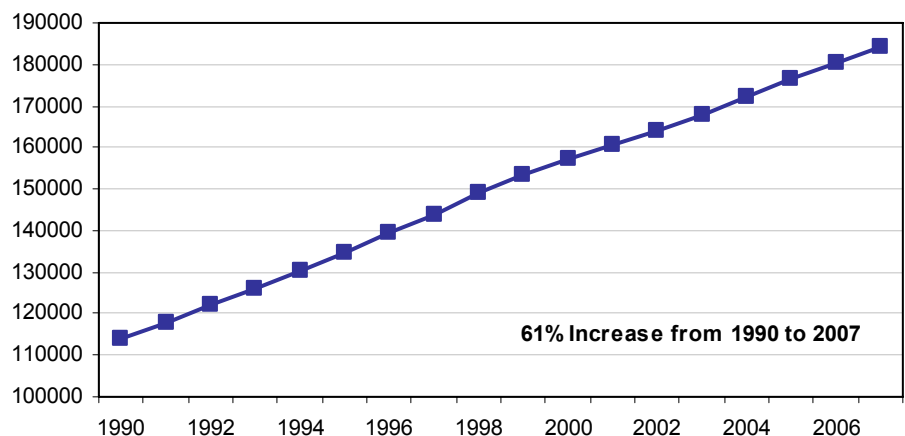
Kent County Population 1990-2007



New Castle County Population 1990-2007



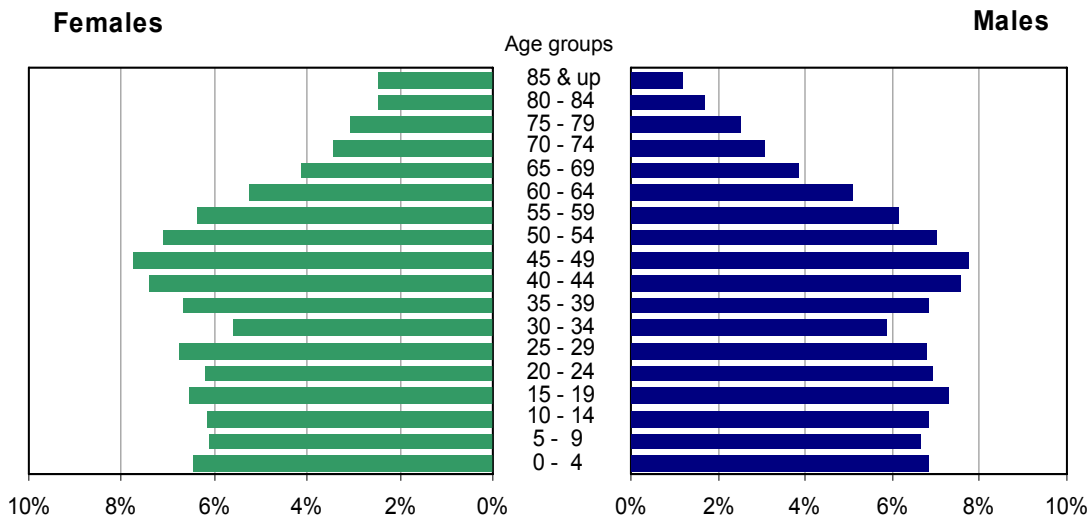
Sussex County Population 1990-2007



Source: Delaware Health Statistics Center

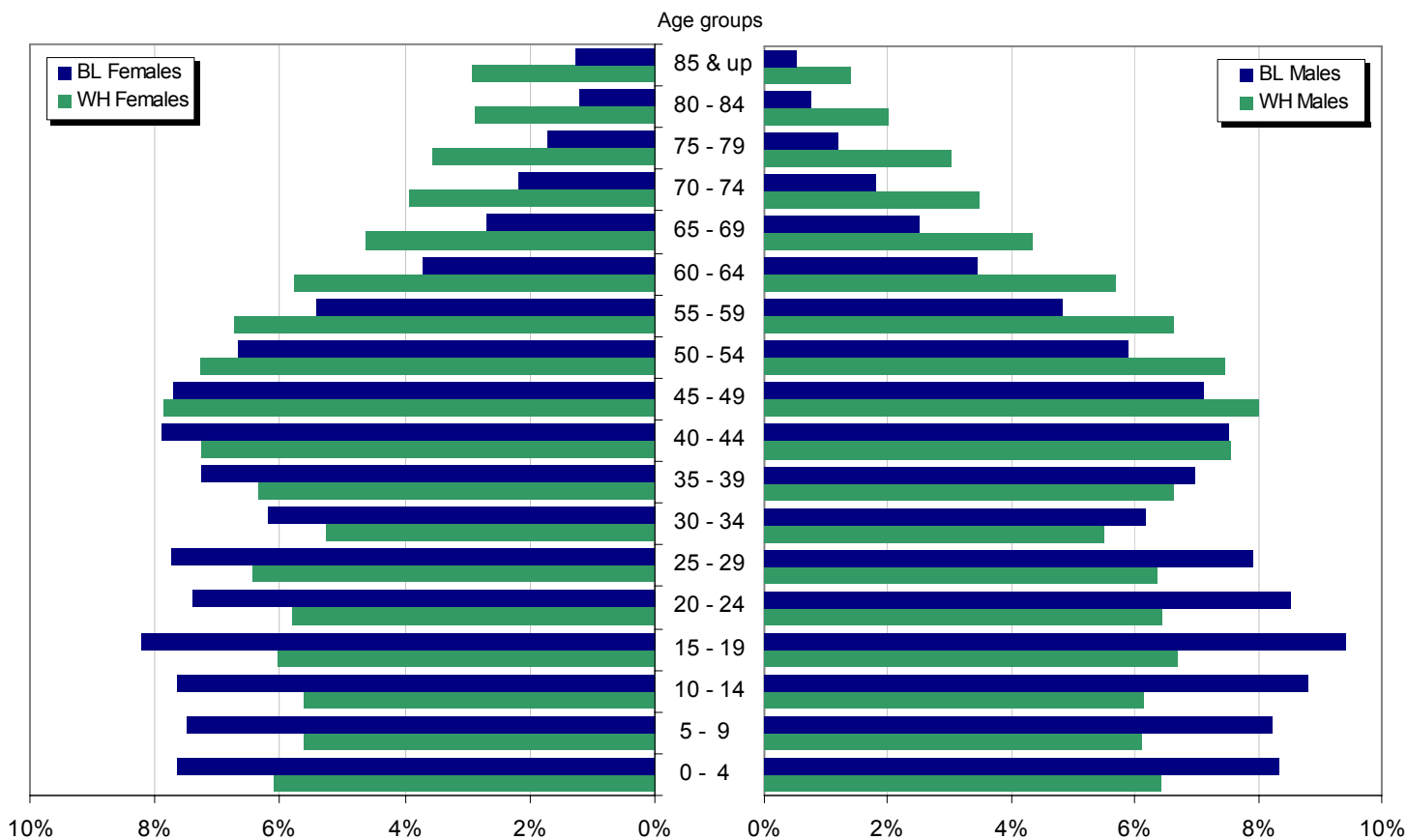
POPULATION

Just over 50 percent of Delaware's population was female in 2007. Females made up a greater proportion of the older age groups, which reflects the longer female life expectancy. Delaware females born in 2007 could expect to live an average of 81.5 years, versus males, who could expect to live 76 years.



Source: Delaware Health Statistics Center

When the population was broken down by race, the higher proportion of females in the older age groups appeared in the black population as well. However, both black males and females had a greater percentage of their population in the 0-39 year age range than whites; in the 45 and above age range, whites made up a greater proportion of the population.



Source: Delaware Health Statistics Center

TABLE A-1
PERCENT CHANGE IN POPULATION BY SEX

DELAWARE, COUNTIES, CITY OF DOVER, CITY OF NEWARK, AND CITY OF WILMINGTON, 1970-2020

Area/ Sex	1970	1980	% Change 1970-1980	1990	% Change 1980-1990	2000	% Change 1990-2000	2010*	% Change 2000-2010	2020*	% Change 2010-2020	% Change 2000-2020
Delaware	548104	594338	8.4	666168	12.1	786431	18.1	896880	14.0	986296	10.0	25.4
Male	267332	286599	7.2	322966	12.7	381586	18.2	435318	14.1	478619	9.9	25.4
Female	280772	307739	9.6	343202	11.5	404845	18.0	461562	14.0	507677	10.0	25.4
Kent	81892	98219	19.9	110993	13.0	127108	14.5	159980	25.9	177817	11.1	39.9
Male	41337	48254	16.7	54300	12.5	61281	12.9	77093	25.8	85604	11.0	39.7
Female	40555	49965	23.2	56693	13.5	65827	16.1	82887	25.9	92213	11.3	40.1
Dover	17488	23512	34.4	27630	17.5	32201	16.5	37479	16.4	38635	3.1	20.0
Male	8319	11695	40.6	13408	14.6	15145	13.0	17457	15.3	17760	1.7	17.3
Female	9169	11817	28.9	14222	20.4	17056	19.9	20022	17.4	20875	4.3	22.4
New Castle	385856	398115	3.2	441946	11.0	501860	13.6	539587	7.5	571201	5.9	13.8
Male	187124	191176	2.2	213869	11.9	243513	13.9	261805	7.5	276783	5.7	13.7
Female	198732	206939	4.1	228077	10.2	258347	13.3	277782	7.5	294418	6.0	14.0
Newark	20757	25247	21.6	26463	4.8	29035	9.7	30412	4.7	30695	0.9	5.7
Male	10242	11993	17.1	12408	3.5	13351	7.6	14203	6.4	14338	0.9	7.4
Female	10515	13254	26.0	14055	6.0	15684	11.6	16209	3.3	16357	0.9	4.3
Wilmington	80386	70195		71529	1.9	72724	1.7	72731	0.0	72309	-0.6	-0.6
Male	36968	31458	-14.9	33249	5.7	34691	4.3	35458	2.2	35785	0.9	3.2
Female	43418	38737	-10.8	38280	-1.2	38033	-0.6	37273	-2.0	36524	-2.0	-4.0
Sussex	80356	98004	22.0	113229	15.5	157463	39.1	197313	25.3	237278	20.3	50.7
Male	38871	47169	21.3	54797	16.2	76792	40.1	96420	25.6	116232	20.5	51.4
Female	41485	50835	22.5	58432	14.9	80671	38.1	100893	25.1	121046	20.0	50.0

POPSEX

Note:

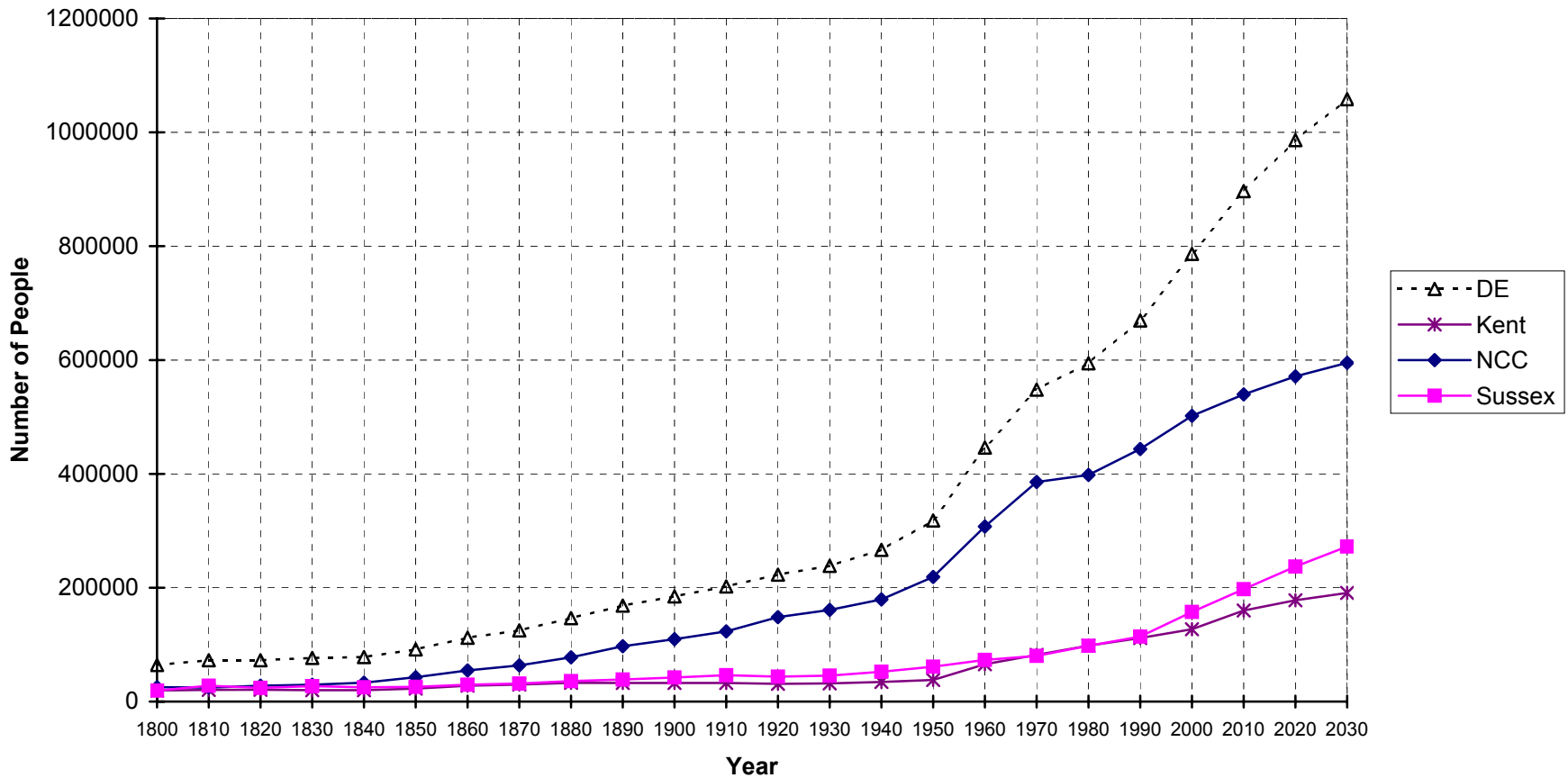
*Numbers for this year are projections.

Sources:

Delaware Health Statistics Center
Delaware Population Consortium
U.S. Bureau of the Census

Figure A-1 Population Growth

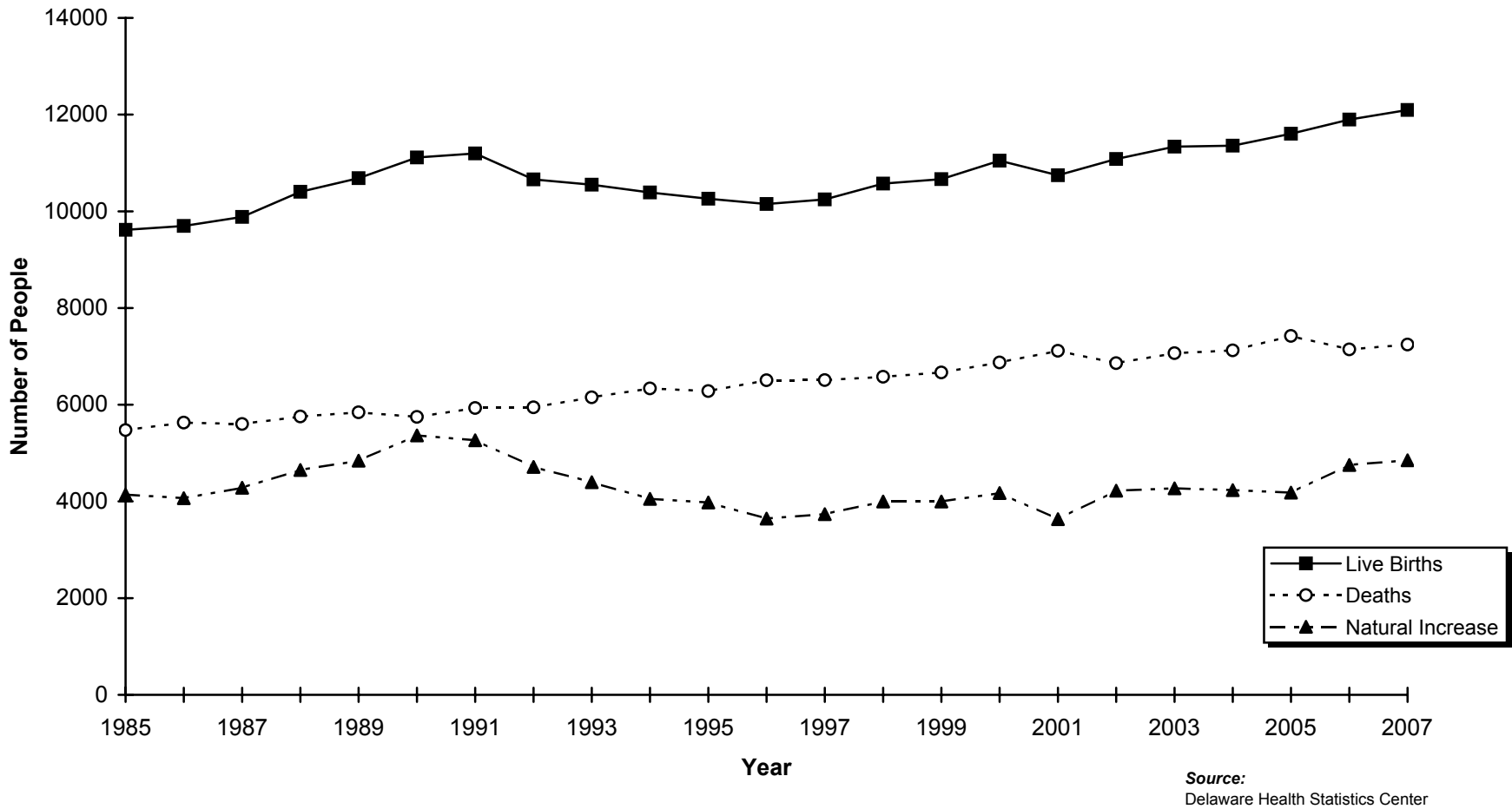
Delaware and Counties, 1800-2030



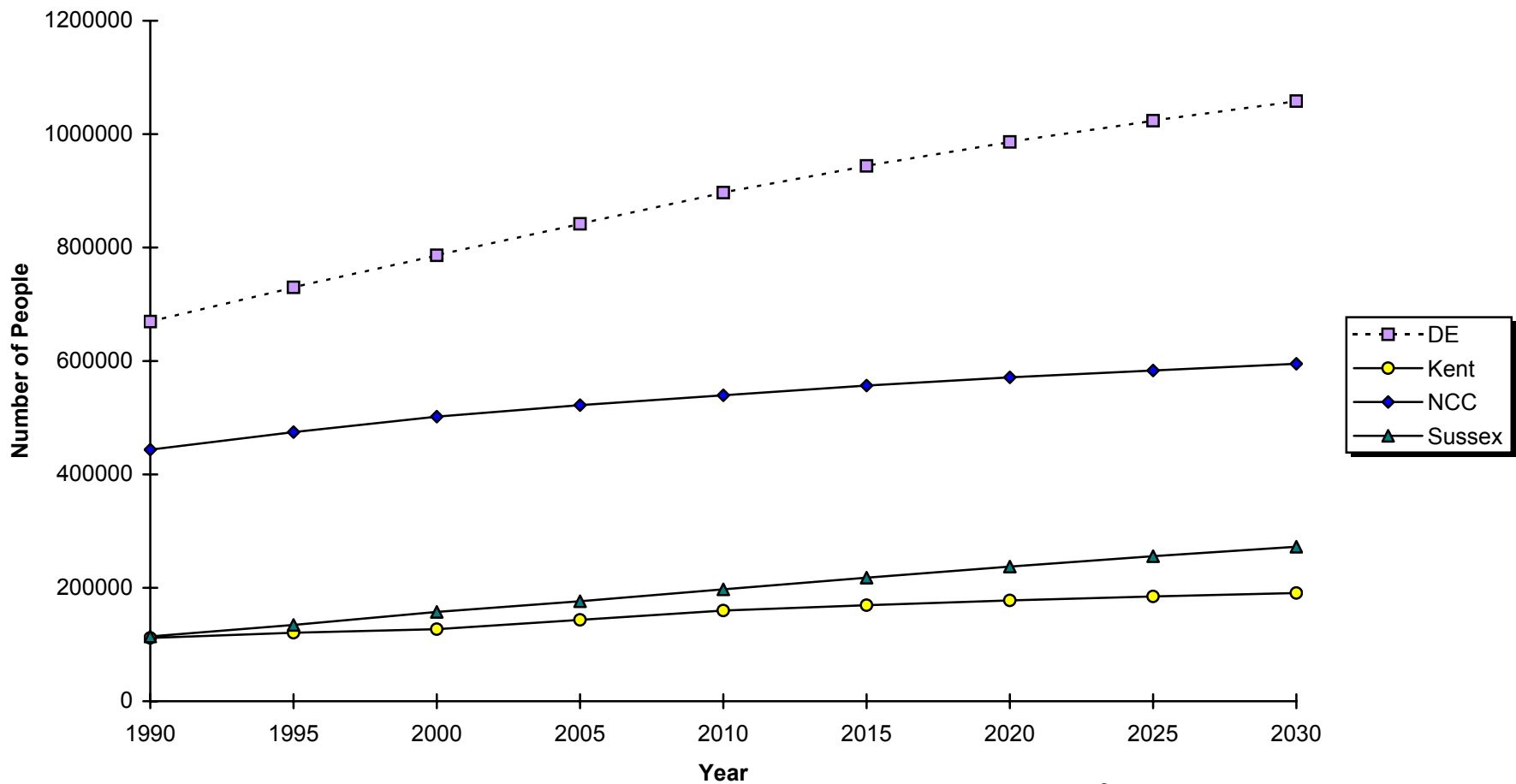
Sources:
 Delaware Health Statistics Center
 Delaware Population Consortium

Figure A-2
Live Births, Deaths, and Natural Increase

Delaware, 1985-2007



**Figure A-3
Projected Population Growth
Delaware and Counties, 1990-2030**



Sources:
Delaware Health Statistics Center
Delaware Population Consortium