

DELAWARE VITAL STATISTICS ANNUAL REPORT, 2008



Photo courtesy of the Delaware Tourism Office

POPULATION

Suggested citation:

Delaware Health Statistics Center. *Delaware Vital Statistics Annual Report, 2008*.
Delaware Department of Health and Social Services, Division of Public Health: 2010.

POPULATION

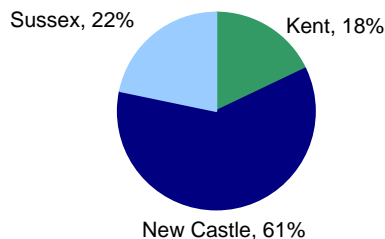
Delaware's three counties continued their increasing population trend, though they grew at different rates. Between 2000 to 2008, county populations grew annually by 2.8 percent for Kent, 0.7 percent for New Castle, and 2.4 percent for Sussex. The overall increase for Delaware was 1.4 percent.

While Sussex County had the highest percentage of residents 65 years of age and older among the three counties (21.1% in 2008) more than half of the state's total 65+ population resided in New Castle County (see Table A-2).

In 2008, more than half of Delaware's 65 and older population resided in New Castle County. However, residents 65 and older represented a much larger proportion of the Sussex county population, where 1 in 5 residents was 65 or older, versus New Castle and Kent counties, where approximately 1 in 8 residents was 65 or older.

Over half of Delaware's population resides in New Castle County.

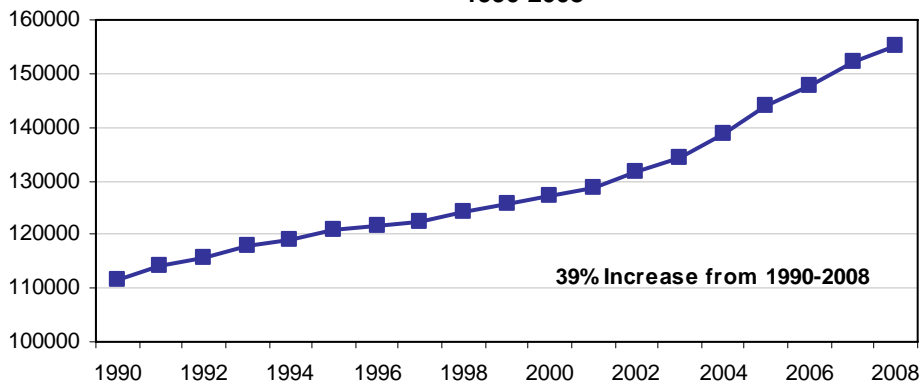
Percent of Population by County Delaware, 2008



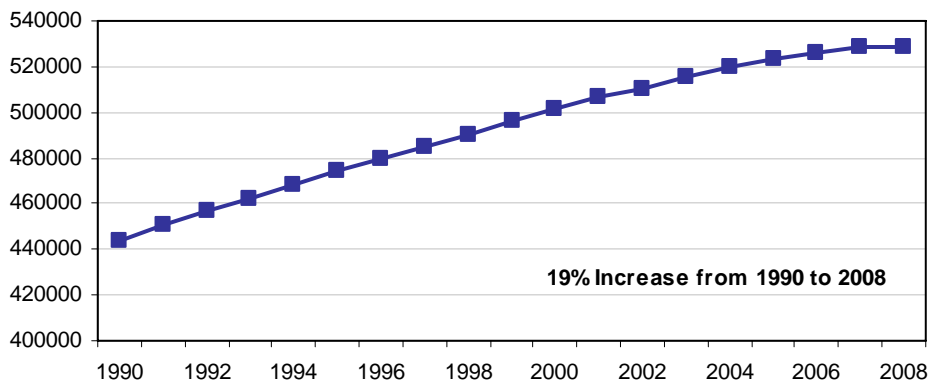
Source: Delaware Health Statistics Center

Delaware Resident Population by County, 1990-2008

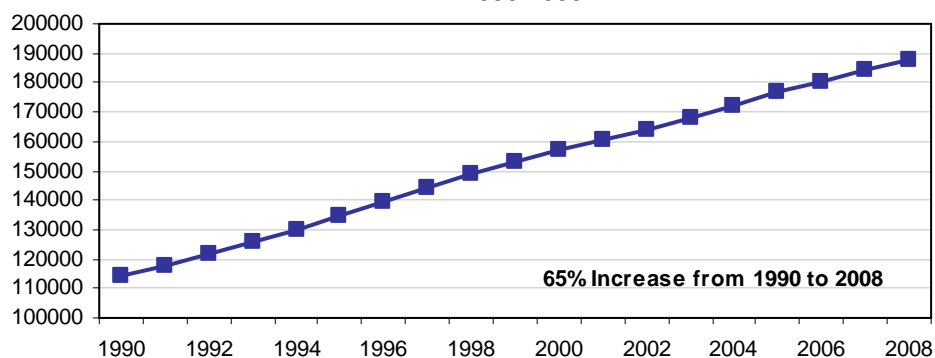
Kent County Population 1990-2008



New Castle County Population 1990-2008



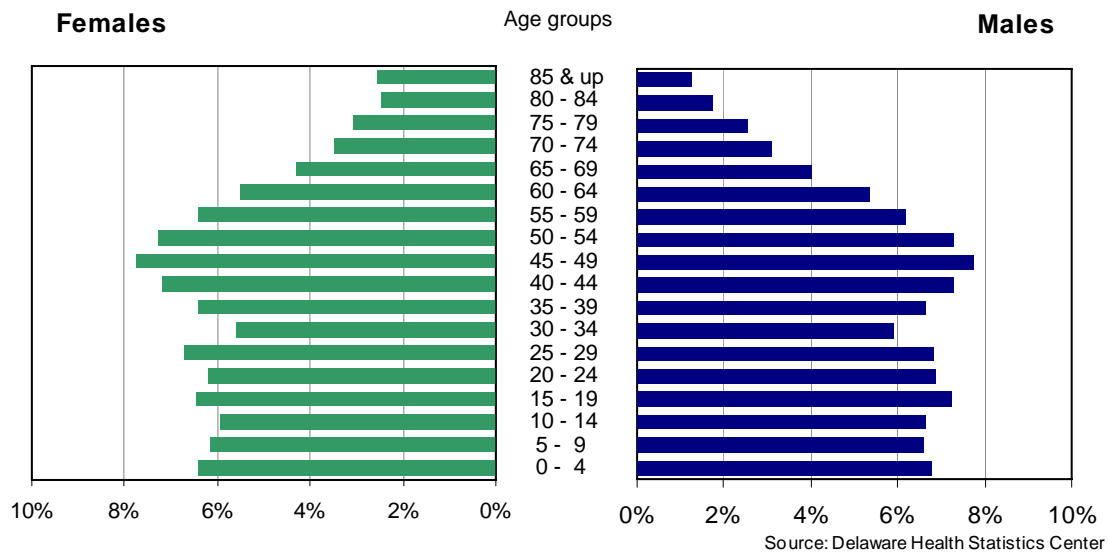
Sussex County Population 1990-2008



Source: Delaware Health Statistics Center

POPULATION

Just over 50 percent of Delaware's population was female in 2008. Females made up a greater proportion of the older age groups, which reflects the longer female life expectancy. Delaware females born in 2008 could expect to live an average of 80.8 years, versus males, who could expect to live 75.7 years.



When the population was broken down by race, the higher proportion of females in the older age groups appeared in the black population as well. However, both black males and females had a greater percentage of their population in the 0-39 year age range than whites; in the 45 and above age range, whites made up a greater proportion of the population.

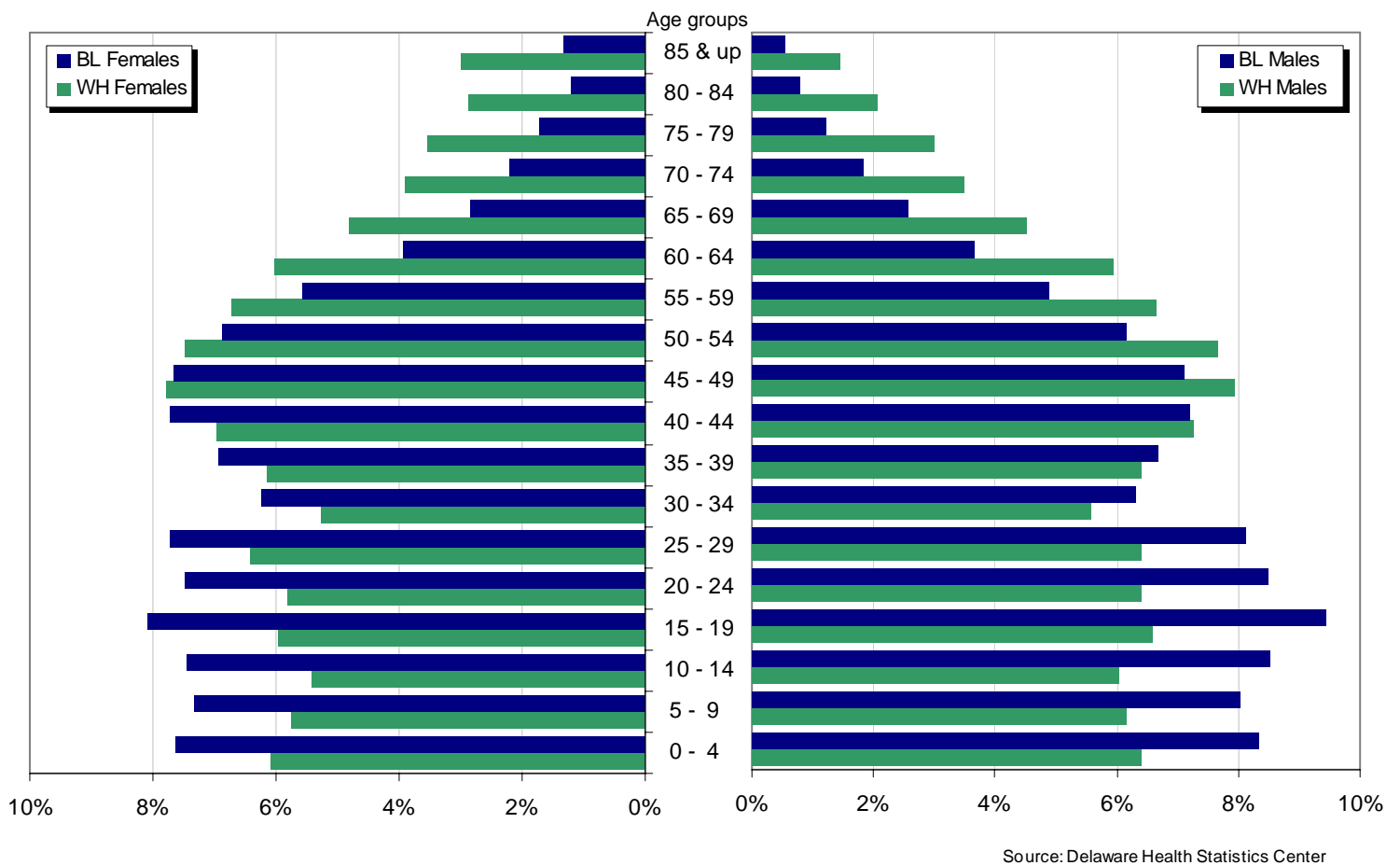


TABLE A-1
PERCENT CHANGE IN POPULATION BY SEX

DELAWARE, COUNTIES, CITY OF DOVER, CITY OF NEWARK, AND CITY OF WILMINGTON, 1970-2020

Area/ Sex	1970	1980	% Change 1970-1980	1990	% Change 1980-1990	2000	% Change 1990-2000	2010*	% Change 2000-2010	2020*	% Change 2010-2020	% Change 2000-2020
Delaware	548104	594338	8.4	666168	12.1	786418	18.1	891495	13.4	977567	9.7	24.3
Male	267332	286599	7.2	322966	12.7	381490	18.1	432593	13.4	474185	9.6	24.3
Female	280772	307739	9.6	343202	11.5	404928	18.0	458902	13.3	503382	9.7	24.3
Kent	81892	98219	19.9	110993	13.0	127103	14.5	159722	25.7	178257	11.6	40.2
Male	41337	48254	16.7	54300	12.5	61300	12.9	77020	25.6	85884	11.5	40.1
Female	40555	49965	23.2	56693	13.5	65803	16.1	82702	25.7	92373	11.7	40.4
Dover	17488	23512	34.4	27630	17.5	32200	16.5	37387	16.1	38956	4.2	21.0
Male	8319	11695	40.6	13408	14.6	15145	13.0	17414	15.0	17908	2.8	18.2
Female	9169	11817	28.9	14222	20.4	17055	19.9	19973	17.1	21048	5.4	23.4
New Castle	385856	398115	3.2	441946	11.0	501856	13.6	535572	6.7	564944	5.5	12.6
Male	187124	191176	2.2	213869	11.9	243427	13.8	259776	6.7	273579	5.3	12.4
Female	198732	206939	4.1	228077	10.2	258429	13.3	275796	6.7	291365	5.6	12.7
Newark	20757	25247	21.6	26463	4.8	29034	9.7	30103	3.7	30321	0.7	4.4
Male	10242	11993	17.1	12408	3.5	13351	7.6	14059	5.3	14163	0.7	6.1
Female	10515	13254	26.0	14055	6.0	15683	11.6	16044	2.3	16158	0.7	3.0
Wilmington	80386	70195		71529	1.9	72718	1.7	72432	-0.4	71651	-1.1	-1.5
Male	36968	31458	-14.9	33249	5.7	34688	4.3	35308	1.8	35454	0.4	2.2
Female	43418	38737	-10.8	38280	-1.2	38030	-0.7	37124	-2.4	36197	-2.5	-4.8
Sussex	80356	98004	22.0	113229	15.5	157459	39.1	196201	24.6	234366	19.5	48.8
Male	38871	47169	21.3	54797	16.2	76763	40.1	95797	24.8	114722	19.8	49.4
Female	41485	50835	22.5	58432	14.9	80696	38.1	100404	24.4	119644	19.2	48.3

Note:

*Numbers for this year are projections.

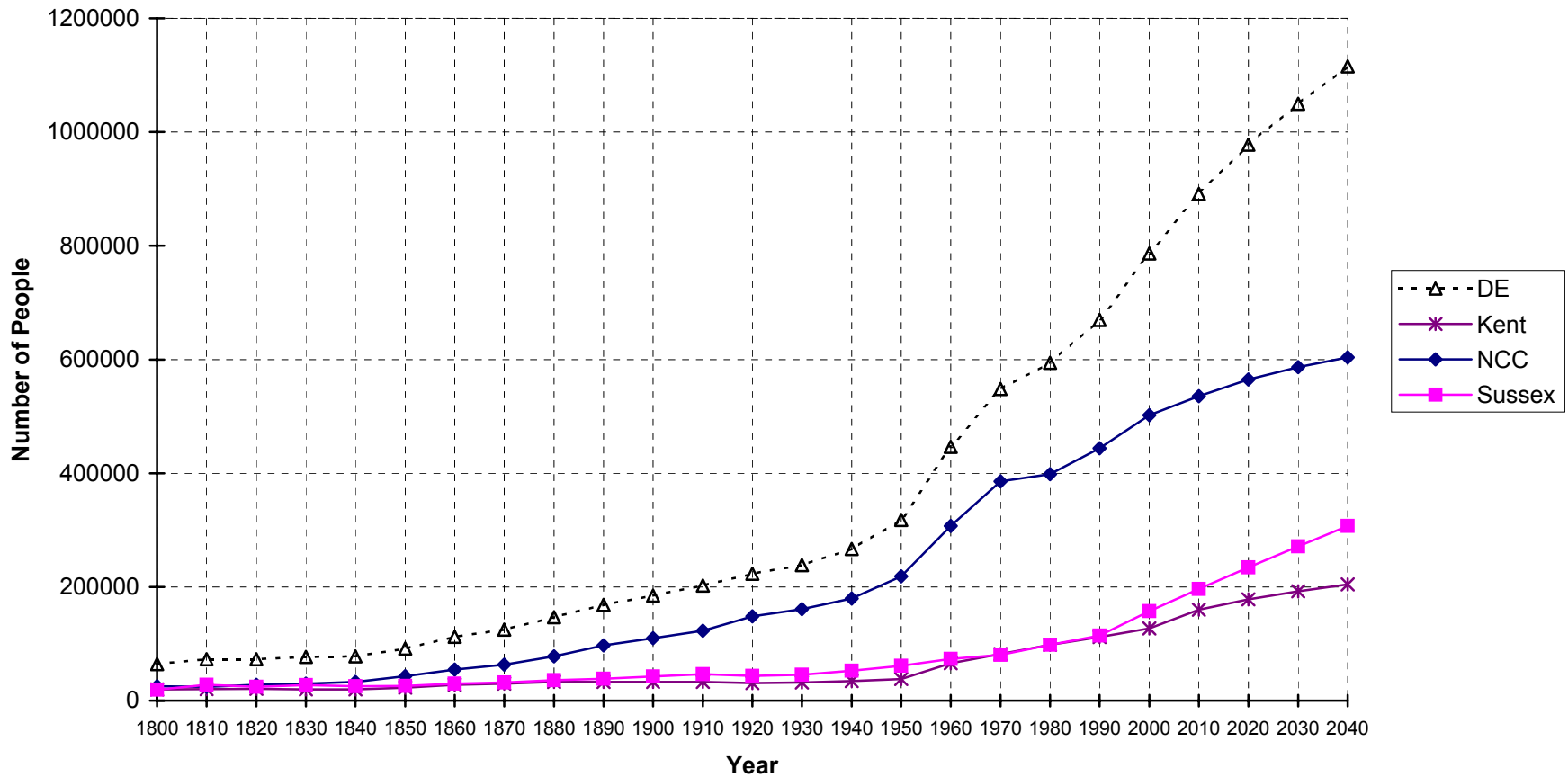
Sources:

Delaware Health Statistics Center
Delaware Population Consortium
U.S. Bureau of the Census

POPSEX

**Figure A-1
Population Growth**

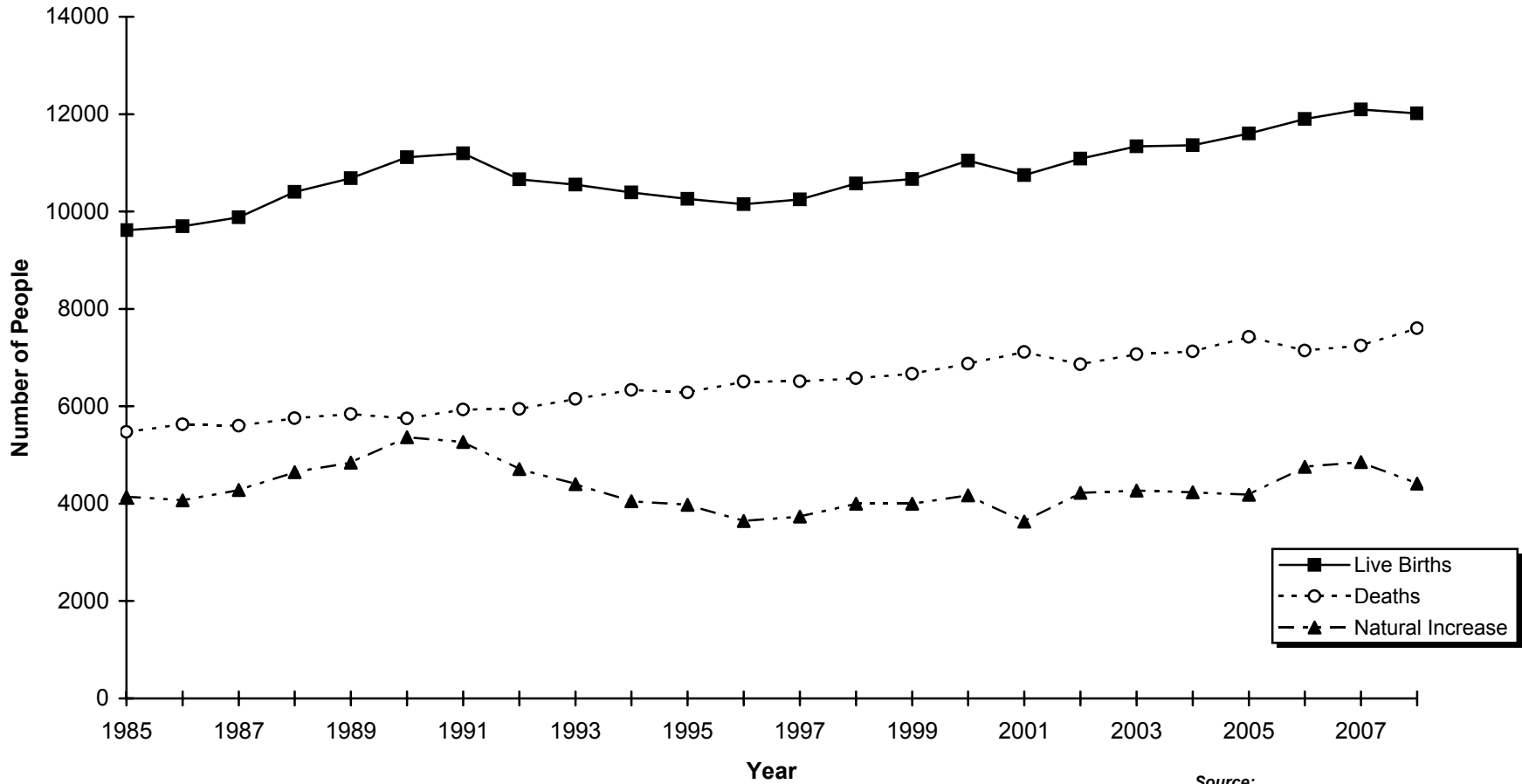
Delaware and Counties, 1800-2040



Sources:
Delaware Health Statistics Center
Delaware Population Consortium

Figure A-2
Live Births, Deaths, and Natural Increase

Delaware, 1985-2008



Source:
Delaware Health Statistics Center

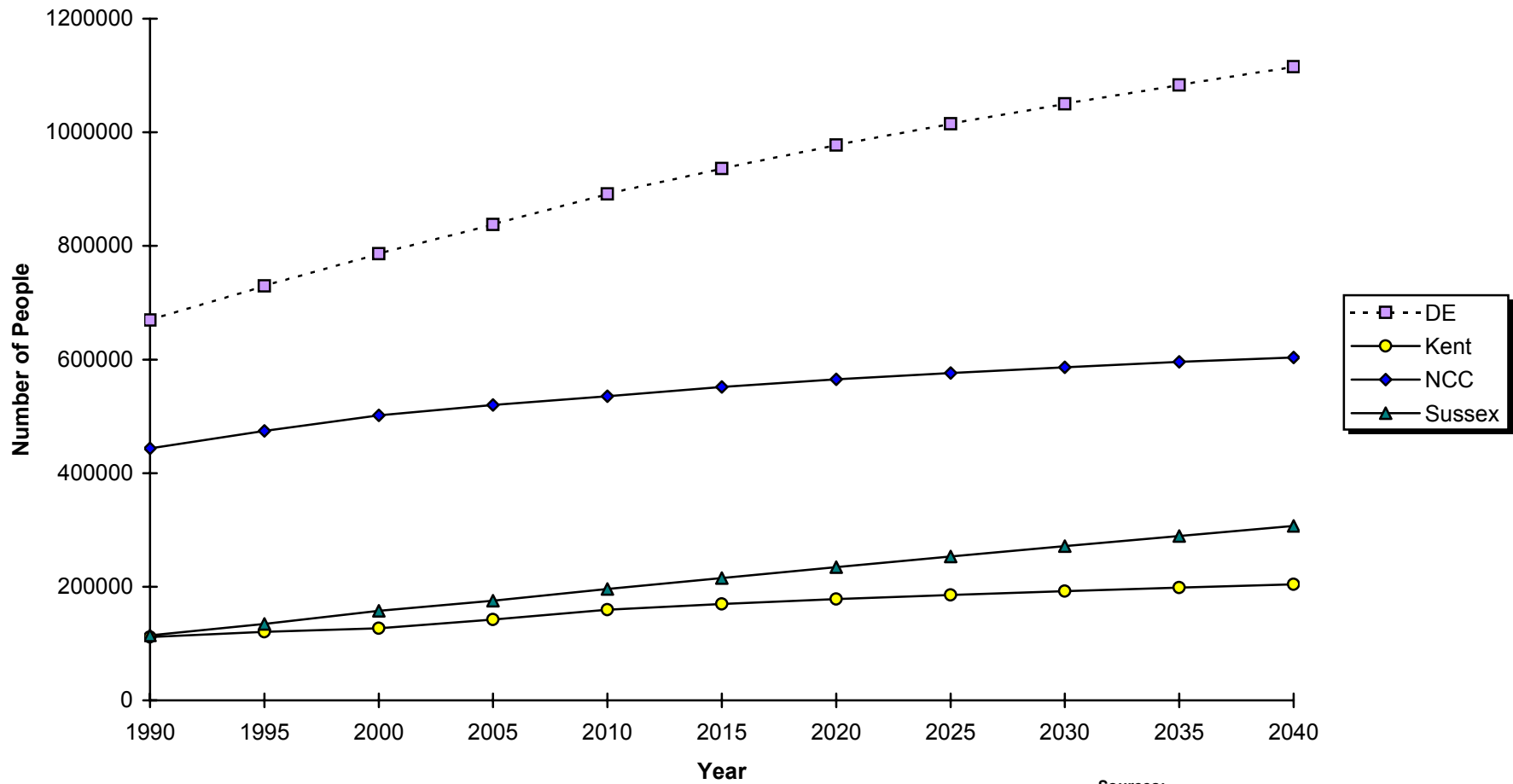
TABLE A-2
POPULATION ESTIMATES BY SEX, RACE AND AGE

DELAWARE, COUNTIES, CITY OF DOVER, CITY OF NEWARK, AND CITY OF WILMINGTON, 2008

Area/ Sex/Race	Age																		
	Total	0-4	5-9	10-14	15-19	20-24	25-29	30-34	35-39	40-44	45-49	50-54	55-59	60-64	65-69	70-74	75-79	80-84	85+
Delaware	871630	57585	55526	54930	59701	56913	59201	50085	56866	63052	67450	63445	54920	47403	36355	28616	24584	18364	16634
Male	422927	28740	27951	28146	30659	29070	28938	24939	27970	30848	32687	30757	26187	22682	17009	13024	10801	7350	5169
White	319958	20521	19771	19287	21128	20558	20516	17846	20524	23217	25375	24520	21309	19017	14422	11146	9582	6590	4629
Black	88202	7367	7081	7529	8334	7490	7175	5574	5892	6369	6285	5447	4293	3208	2270	1630	1085	692	481
Female	448703	28845	27575	26784	29042	27843	30263	25146	28896	32204	34763	32688	28733	24721	19346	15592	13783	11014	11465
White	337520	20573	19401	18334	20101	19618	21698	17817	20769	23491	26321	25216	22668	20366	16228	13172	11917	9723	10107
Black	97068	7421	7133	7224	7861	7254	7499	6046	6738	7494	7448	6669	5401	3834	2759	2134	1686	1187	1280
Kent	155142	11077	10695	10674	11548	11428	11324	9139	9798	11083	12033	10752	8645	7576	5739	4817	3897	2596	2321
Male	74807	5531	5353	5448	5924	5699	5546	4402	4668	5357	5789	5117	4087	3646	2677	2179	1709	987	688
White	56159	3995	3840	3852	4182	4107	3650	3214	3539	4186	4557	4054	3242	2972	2171	1776	1426	827	569
Black	16709	1401	1361	1419	1590	1456	1735	1019	971	1014	1067	950	766	605	471	361	259	150	114
Female	80335	5546	5342	5226	5624	5729	5778	4737	5130	5726	6244	5635	4558	3930	3062	2638	2188	1609	1633
White	59483	3997	3808	3656	4025	4148	3589	3245	3819	4327	4766	4283	3506	3135	2480	2138	1812	1367	1382
Black	18611	1414	1386	1396	1447	1436	2043	1318	1130	1204	1305	1189	929	703	505	428	319	220	239
Dover	36107	2444	2196	2184	3261	3879	2539	2117	1999	2229	2438	2293	1975	1589	1338	1145	1033	738	709
Male	16843	1236	1155	1061	1575	1880	1213	986	923	1048	1074	1077	884	734	611	488	388	298	214
Female	19264	1208	1041	1123	1686	1999	1326	1132	1077	1181	1365	1216	1091	855	727	658	645	440	495
New Castle	528536	35750	34722	34154	37437	34602	38411	32412	36930	39948	41381	38296	32415	26606	19280	14442	12409	9836	9505
Male	256396	17820	17455	17554	19183	17791	18551	16278	18185	19576	20067	18628	15338	12640	8977	6456	5238	3822	2837
White	187240	12458	12046	11640	12733	12147	13257	11389	12936	14196	15078	14338	12005	10131	7244	5249	4508	3359	2526
Black	58303	4781	4649	4950	5580	4893	4404	3776	4076	4410	4235	3688	2885	2157	1481	1025	634	413	266
Female	272140	17930	17267	16600	16811	16811	19860	16134	18745	20372	21314	19668	17077	13966	10303	7986	7171	6014	6668
White	197265	12516	11824	10975	12147	11336	14605	11257	12860	14186	15528	14522	12903	10939	8236	6398	6026	5215	5792
Black	64578	4833	4714	4761	5308	4762	4464	3926	4807	5271	5050	4566	3687	2626	1822	1400	1038	725	818
Newark	29886	878	949	1098	5782	8192	1825	1242	1013	1191	1481	1454	1249	982	759	569	505	406	310
Male	13936	454	504	559	2252	3910	999	663	493	603	731	703	590	477	328	232	209	149	79
Female	15950	424	445	539	3530	4282	825	579	520	588	749	750	659	505	431	337	296	257	232
Wilmington*	72599	5744	4853	4490	5397	5321	5553	5574	5501	5062	4956	4711	4028	3136	2347	1808	1534	1200	1384
Male	35246	2934	2502	2351	2757	2652	2914	2822	2777	2568	2465	2301	1885	1378	972	726	546	373	323
White	13366	949	741	484	601	907	1164	1372	1300	982	914	928	828	686	449	325	284	222	230
Black	19794	1800	1597	1680	1947	1549	1513	1242	1294	1466	1440	1299	978	641	491	379	247	144	87
Female	37353	2810	2351	2139	2640	2669	2639	2752	2724	2494	2491	2410	2143	1758	1375	1082	988	827	1061
White	13492	892	654	422	522	807	936	1282	1078	738	769	861	878	802	622	463	531	511	724
Black	21948	1740	1554	1576	1925	1670	1511	1299	1500	1629	1622	1463	1195	892	717	585	443	304	323
Sussex	187952	10758	10109	10102	10716	10883	9466	8534	10138	12021	14036	14397	13860	13221	11336	9357	8278	5932	4808
Male	91724	5389	5143	5144	5552	5580	4841	4259	5117	5915	6831	7012	6762	6396	5355	4389	3854	2541	1644
White	76559	4068	3885	3795	4213	4304	3609	3243	4049	4835	5740	6128	6062	5914	5007	4121	3648	2404	1534
Black	13190	1185	1071	1160	1164	1141	1036	779	845	945	983	809	642	446	318	244	192	129	101
Female	96228	5369	4966	4958	5164	5303	4625	4275	5021	6106	7205	7385	7098	6825	5981	4968	4424	3391	3164
White	80772	4060	3769	3703	3929	4134	3504	3315	4090	4978	6027	6411	6259	6292	5512	4636	4079	3141	2933
Black	13879	1174	1033	1067	1106	1056	992	802	801	1019	1093	914	785	505	432	306	329	242	223

Sources:
Delaware Health Statistics Center
Delaware Population Consortium

**Figure A-3
Projected Population Growth
Delaware and Counties, 1990-2040**



Sources:
Delaware Health Statistics Center
Delaware Population Consortium