

Infant Mortality Highlights

<u>Key Indicators</u>	<u>Period</u>	<u>Delaware</u>	<u>U.S.</u>	<u>Recent Trend in Delaware*</u>
Infant Mortality • Deaths to children under one year of age per 1,000 live births <i>(See Table E-4)</i>	1997-2001	9.0	7.1	Increasing
Neonatal Mortality • Deaths under 28 days of age per 1,000 live births <i>(See Table E-5)</i>	1997-2001	6.4	4.7	Increasing
Postneonatal Mortality • Deaths to children 28 to 364 days of age per 1,000 live births <i>(See Table E-6)</i>	1997-2001	2.7	2.4	About the Same

* Trend over last 3 to 4 time periods.

Key Facts

- Infants born to mothers who received no prenatal care had a higher mortality rate (45.9) than infants born to mothers who received prenatal care in the first trimester (8.0). *(See Table E-7)*.
- Infants born to mothers who had another live birth less than 18 months earlier had a higher mortality rate (9.2) than infants born to mothers whose last live birth was 18 months ago or more (6.7). *(See Table E-7)*.
- Infants born weighing less than 1500 grams (3 lbs 5 oz) had a mortality rate of 303.8 compared to 2.4 for infants born weighing 2500 grams (5 lbs 8 oz) or more. *(See Table E-7)*.
- Infants born to mothers under 20 years of age had a higher mortality rate (11.9) than infants born to mothers 20 years of age and older (8.2). *(See Table E-7)*.
- Infants born to single mothers had a higher mortality rate (12.2) than infants born to married mothers (6.6). *(See Table E-7)*.

TABLE E-1
NUMBER OF INFANT DEATHS BY RACE

U.S., DELAWARE, COUNTIES AND CITY OF WILMINGTON, 1984-2001

Area/ Race	1984	1985	1986	1987	1988	1989	1990	1991	1992	1993	1994	1995	1996	1997	1998	1999	2000	2001
U.S.																		
All Races	39580	40030	38891	38408	38910	39655	38351	36766	34628	33466	31710	29583	28237	28045	28371	27937	28035	27801*
White	27608	27864	26564	25810	25925	25794	24883	23657	22164	21497	20504	19490	18749	18539	18561	18067	18144	18094*
Black	10881	11063	11204	11461	11840	12527	12290	11994	11348	10887	10072	9118	8490	8496	8726	8822	8771	8563*
Other	1091	1103	1123	1137	1145	1334	1178	1115	1116	1082	1134	975	998	1010	1084	1048	1120	1144*
Delaware																		
All Races	100	142	112	116	121	128	110	136	93	94	70	79	77	81	103	81	102	114
White	59	85	70	69	71	77	58	79	44	44	40	46	43	42	54	31	65	60
Black	41	56	41	47	49	51	52	55	49	50	27	32	32	36	49	49	37	53
Other	0	1	1	0	1	0	0	2	0	0	3	1	2	3	0	1	0	1
Kent																		
All Races	16	28	15	19	27	17	30	18	19	11	15	18	17	14	18	10	21	19
White	13	20	11	13	16	10	17	9	12	5	10	10	11	4	13	4	16	10
Black	3	7	4	6	11	7	13	8	7	6	5	7	6	10	5	6	5	9
Other	0	1	0	0	0	0	0	1	0	0	0	1	0	0	0	0	0	0
New Castle																		
All Races	65	98	79	78	72	81	68	98	66	68	37	45	48	48	65	61	67	72
White	38	56	47	46	43	47	33	59	29	32	20	24	21	26	27	22	40	37
Black	27	42	31	32	28	34	35	38	37	36	15	21	26	20	38	38	27	35
Other	0	0	1	0	1	0	0	1	0	0	2	0	1	2	0	1	0	0
Wilmington																		
All Races	26	31	34	32	26	29	25	34	27	24	15	11	19	14	18	20	16	17
White	4	9	16	9	7	7	2	11	4	4	3	2	1	4	2	4	4	2
Black	22	22	18	23	19	22	23	23	23	20	11	9	18	10	16	16	12	15
Other	0	0	0	0	0	0	0	0	0	0	1	0	0	0	0	0	0	0
Balance of NC County																		
All Races	39	67	45	46	46	52	43	64	39	44	22	34	29	34	47	41	51	55
White	34	47	31	37	36	40	31	48	25	28	17	22	20	22	25	18	36	35
Black	5	20	13	9	9	12	12	15	14	16	4	12	8	10	22	22	15	20
Other	0	0	1	0	1	0	0	1	0	0	1	0	1	2	0	1	0	0
Sussex																		
All Races	19	16	18	19	22	30	12	20	8	15	18	16	12	19	20	10	14	23
White	8	9	12	10	12	20	8	11	3	7	10	12	11	12	14	5	9	13
Black	11	7	6	9	10	10	4	9	5	8	7	4	0	6	6	5	5	9
Other	0	0	0	0	0	0	0	0	0	0	1	0	1	1	0	0	0	1

INFANT1

Notes:

- *Based on NCHS estimate.
- Infant deaths refer to deaths to children under one year of age.

Sources:

National Center for Health Statistics
Delaware Health Statistics Center

TABLE E-2
NUMBER OF NEONATAL DEATHS BY RACE

U.S., DELAWARE, COUNTIES AND CITY OF WILMINGTON, 1984-2001

Area/ Race	1984	1985	1986	1987	1988	1989	1990	1991	1992	1993	1994	1995	1996	1997	1998	1999	2000	2001
U.S.																		
All Races	25691	26179	25212	24627	24690	25168	24309	22978	21849	21174	20250	19155	18326	18524	18918	18728	18776	18491*
White	18058	18233	17256	16448	16346	16428	15751	14698	13915	13506	13100	12644	12252	12269	12406	12164	12201	12157*
Black	7002	7340	7297	7520	7695	8021	7905	7677	7296	7044	6499	5940	5483	5637	5824	5920	5843	5647*
Other	631	606	659	659	649	719	653	603	638	624	651	571	591	618	688	644	732	687*
Delaware																		
All Races	70	102	86	81	90	93	76	90	64	69	48	47	53	55	74	58	71	82
White	43	63	54	49	49	60	40	55	33	33	28	26	28	26	33	21	45	44
Black	27	38	31	32	40	33	36	34	31	36	18	20	24	27	41	37	26	37
Other	0	1	1	0	1	0	0	1	0	0	2	1	1	2	0	0	0	1
Kent																		
All Races	9	20	10	17	16	7	19	12	11	6	7	10	13	10	9	8	15	15
White	7	15	7	12	8	3	13	5	9	2	3	6	7	1	6	3	11	10
Black	2	4	3	5	8	4	6	6	2	4	4	3	6	9	3	5	4	5
Other	0	1	0	0	0	0	0	1	0	0	0	1	0	0	0	0	0	0
New Castle																		
All Races	47	69	61	58	56	67	46	66	47	56	28	26	33	33	47	44	50	54
White	29	40	36	34	33	40	20	43	21	27	17	12	14	19	15	14	29	27
Black	18	29	24	24	22	27	26	23	26	29	9	14	18	13	32	30	21	27
Other	0	0	1	0	1	0	0	0	0	0	2	0	1	1	0	0	0	0
Wilmington																		
All Races	17	20	25	25	23	24	20	22	19	17	10	6	14	6	12	14	13	14
White	3	5	12	8	7	7	2	10	3	2	3	0	1	3	1	2	4	1
Black	14	15	13	17	16	17	18	12	16	15	6	6	13	3	11	12	9	13
Other	0	0	0	0	0	0	0	0	0	0	1	0	0	0	0	0	0	0
Balance of NC County																		
All Races	30	49	36	33	33	43	26	44	28	39	18	20	19	27	35	30	37	40
White	26	35	24	26	26	33	18	33	18	25	14	12	13	16	14	12	25	26
Black	4	14	11	7	6	10	8	11	10	14	3	8	5	10	21	18	12	14
Other	0	0	1	0	1	0	0	0	0	0	1	0	1	1	0	0	0	0
Sussex																		
All Races	14	13	15	6	18	19	11	12	6	7	13	11	7	12	18	6	6	13
White	7	8	11	3	8	17	7	7	3	4	8	8	7	6	12	4	5	7
Black	7	5	4	3	10	2	4	5	3	3	5	3	0	5	6	2	1	5
Other	0	0	0	0	0	0	0	0	0	0	0	0	0	1	0	0	0	1

Notes:

1. *Based on NCHS estimate.
2. Neonatal deaths refer to deaths to children under 28 days of age.

Sources:

National Center for Health Statistics
Delaware Health Statistics Center

TABLE E-3
NUMBER OF POSTNEONATAL DEATHS BY RACE

U.S., DELAWARE, COUNTIES AND CITY OF WILMINGTON, 1984-2001

Area/ Race	1984	1985	1986	1987	1988	1989	1990	1991	1992	1993	1994	1995	1996	1997	1998	1999	2000	2001
U.S.																		
All Races	13889	13851	13679	13781	14220	14487	14042	13788	12779	12292	11460	10428	9911	9521	9453	9209	9259	9310*
White	9550	9631	9308	9362	9579	9366	9132	8959	8249	7991	7404	6846	6497	6270	6155	5903	5943	5937*
Black	3879	3723	3907	3941	4145	4506	4385	4317	4052	3843	3573	3178	3007	2859	2902	2902	2928	2916*
Other	460	497	464	478	496	615	525	512	478	458	483	404	407	392	396	404	388	457*
Delaware																		
All Races	30	40	26	35	31	35	34	46	29	25	22	32	24	26	29	23	31	32
White	16	22	16	20	22	17	18	24	11	11	12	20	15	16	21	10	20	16
Black	14	18	10	15	9	18	16	21	18	14	9	12	8	9	8	12	11	16
Other	0	0	0	0	0	0	0	1	0	0	1	0	1	1	0	1	0	0
Kent																		
All Races	7	8	5	2	11	10	11	6	8	5	8	8	4	4	9	2	6	4
White	6	5	4	1	8	7	4	4	3	3	7	4	4	3	7	1	5	0
Black	1	3	1	1	3	3	7	2	5	2	1	4	0	1	2	1	1	4
Other	0	0	0	0	0	0	0	0	0	0	0	0	0	0	0	0	0	0
New Castle																		
All Races	18	29	18	20	16	14	22	32	19	12	9	19	15	15	18	17	17	18
White	9	16	11	12	10	7	13	16	8	5	3	12	7	7	12	8	11	10
Black	9	13	7	8	6	7	9	15	11	7	6	7	8	7	6	8	6	8
Other	0	0	0	0	0	0	0	1	0	0	0	0	0	1	0	1	0	0
Wilmington																		
All Races	9	11	9	7	3	5	5	12	8	7	5	5	5	8	6	6	3	3
White	1	4	4	1	0	0	0	1	1	2	0	2	0	1	1	2	0	1
Black	8	7	5	6	3	5	5	11	7	5	5	3	5	7	5	4	3	2
Other	0	0	0	0	0	0	0	0	0	0	0	0	0	0	0	0	0	0
Balance of NC County																		
All Races	9	18	9	13	13	9	17	20	11	5	4	14	10	7	12	11	14	15
White	8	12	7	11	10	7	13	15	7	3	3	10	7	6	11	6	11	9
Black	1	6	2	2	3	2	4	4	4	2	1	4	3	0	1	4	3	6
Other	0	0	0	0	0	0	0	1	0	0	0	0	0	1	0	1	0	0
Sussex																		
All Races	5	3	3	13	4	11	1	8	2	8	5	5	5	7	2	4	8	10
White	1	1	1	7	4	3	1	4	0	3	2	4	4	6	2	1	4	6
Black	4	2	2	6	0	8	0	4	2	5	2	1	0	1	0	3	4	4
Other	0	0	0	0	0	0	0	0	0	0	1	0	1	0	0	0	0	0

Notes:

- *Based on NCHS estimate.
- Postneonatal deaths refer to deaths to children 28 to 364 days of age.

Sources:

National Center for Health Statistics
Delaware Health Statistics Center

TABLE E- 4
 FIVE-YEAR AVERAGE INFANT MORTALITY RATES BY RACE
 U.S., DELAWARE, COUNTIES AND CITY OF WILMINGTON, 1981-2001

Area/ Race	1981 -1985	1982 -1986	1983 -1987	1984 -1988	1985 -1989	1986 -1990	1987 -1991	1988 -1992	1989 -1993	1990 -1994	1991 -1995	1992 -1996	1993 -1997	1994 -1998	1995 -1999	1996 -2000	1997 -2001
U.S.																	
All Races	11.2	10.9	10.6	10.4	10.2	9.9	9.6	9.3	9.0	8.6	8.3	8.0	7.7	7.5	7.3	7.1	7.1
White	9.8	9.5	9.2	9.0	8.7	8.3	8.0	7.7	7.3	7.0	6.8	6.5	6.4	6.2	6.0	5.9	5.8
Black	19.1	18.7	18.3	18.0	18.1	18.0	17.9	17.7	17.5	17.0	16.4	15.8	15.3	14.8	14.6	14.4	14.2
Delaware																	
All Races	12.6+	12.2+	11.8+	12.1+	12.3+	11.3+	11.5+	10.9+	10.4+	9.3	8.9	7.9	7.8	7.9	8.1+	8.4+	9.0+
White	9.7	9.7	9.3	9.6	9.9+	8.9	8.9	8.2	7.5	6.6	6.4	5.6-	5.6	5.9	5.7	6.2	6.6
Black	22.1+	20.7	19.9	20.6	20.7	19.6	20.0	19.8	19.9	18.2	17.0	15.7	14.7	14.4	15.8	15.9	17.1+
Kent																	
All Races	10.5	9.8	9.7	11.3	11.1	11.2	11.3	11.3	9.7	9.6	8.6	8.6	8.2	9.0	8.4	8.6	8.7
White	9.1	8.7	9.3	10.5	9.9	9.4	9.0	8.8	7.3	7.3	6.5	6.8	5.9	7.1	6.3	7.0	6.9
Black	14.9	13.5	11.3	14.4	15.6	17.7	19.0	19.9	17.9	17.6	15.5	15.1	16.5	15.9	15.7	14.3	15.2
New Castle																	
All Races	13.5	13.1	12.6	12.4	12.5	11.2	11.3	10.8	10.7	9.5	9.0	7.8	7.3	7.3	7.9	8.5	9.1
White	10.2	10.1	9.6	9.5	9.6	8.4	8.6	7.9	7.5	6.5	6.3	5.0	4.9	4.8	4.9	5.6	6.2
Black	25.2	23.9	23.4	23.2	23.1	21.1	20.8	20.8	21.7	19.8	18.3	17.5	15.3	15.1	17.4	17.7	18.2
Wilmington																	
All Races	N/A	N/A	N/A	N/A	N/A	20.9	20.4	19.6	19.5	18.0	16.6	15.2	13.6	12.8	13.7	14.4	14.0
White	N/A	N/A	N/A	N/A	N/A	16.2	14.1	12.3	11.2	9.7	10.1	6.2	6.4	5.6	6.2	7.0	7.4
Black	N/A	N/A	N/A	N/A	N/A	23.8	24.2	23.8	24.3	22.8	20.4	20.5	17.8	16.8	18.0	18.7	18.0
Balance of NC County																	
All Races	N/A	N/A	N/A	N/A	N/A	8.6	9.0	8.6	8.5	7.5	7.2	6.1	5.9	6.0	6.7	7.2	8.1
White	N/A	N/A	N/A	N/A	N/A	7.6	8.1	7.4	7.1	6.2	5.9	4.8	4.8	4.7	4.8	5.4	6.1
Black	N/A	N/A	N/A	N/A	N/A	17.3	16.4	17.1	18.5	16.3	16.0	14.4	12.9	13.6	16.8	16.8	18.5
Sussex																	
All Races	11.8	11.6	11.0	11.8	12.8	12.2	12.2	10.7	9.7	8.3	8.7	7.9	9.0	9.4	8.5	8.1	9.0
White	8.4	9.0	8.2	9.1	10.8	10.5	10.1	8.8	7.8	6.2	6.8	6.8	8.0	8.9	8.0	7.5	7.6
Black	20.0	17.9	17.8	18.5	18.0	16.8	18.0	16.1	15.3	13.7	13.9	10.4	11.1	10.4	9.9	10.4	14.4

INFANT4

Notes:

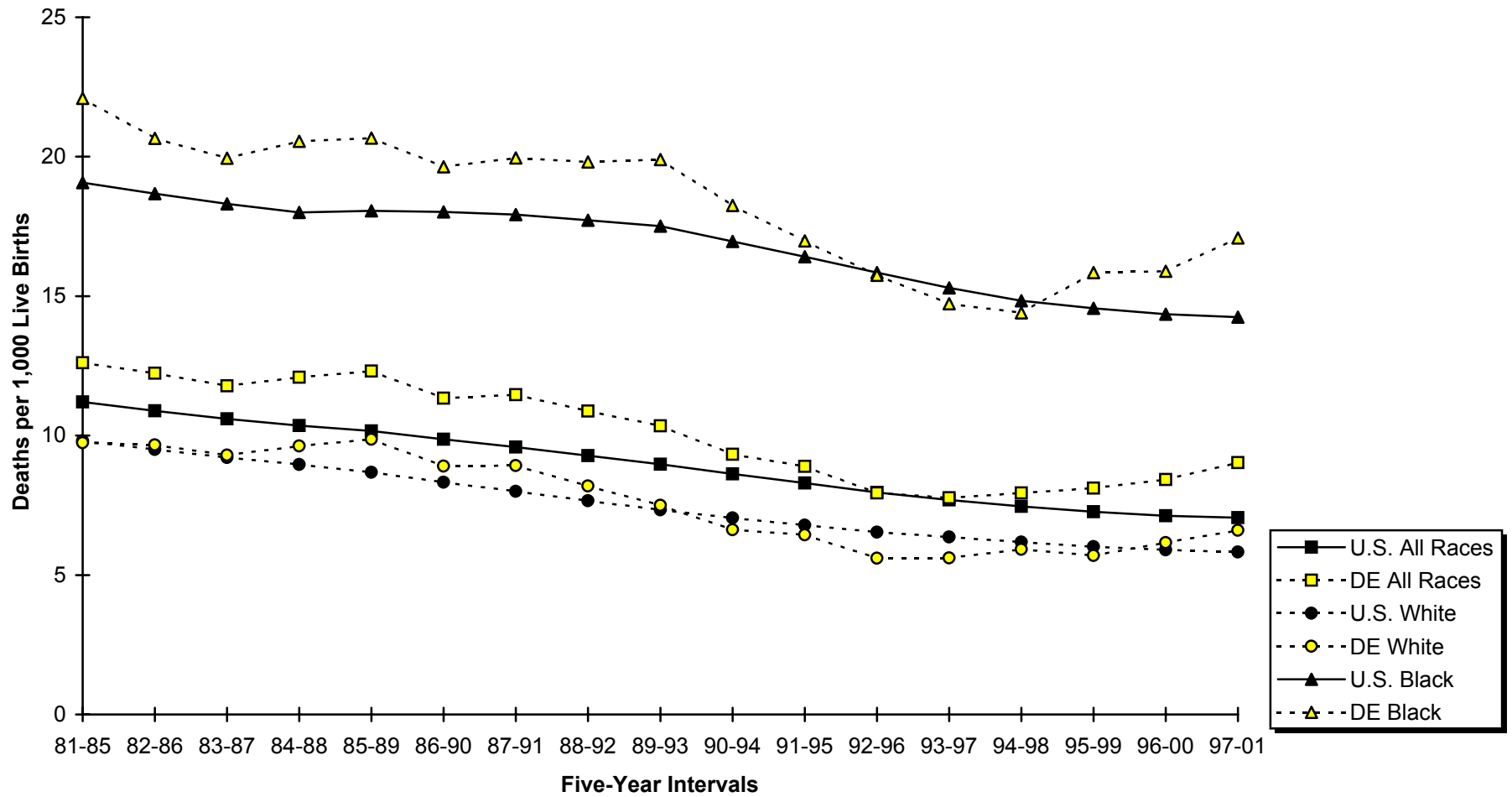
1. 1997-2001 US data are based on NCHS estimates.
2. N/A indicates data not available.
3. Infant mortality rates represent the number of deaths to children under one year of age per 1000 live births.
4. '+' indicates that the Delaware rate is significantly higher than the U.S. rate.
 '-' indicates that the Delaware rate is significantly lower than the U.S. rate.
 No statistical comparisons were made between the county rates and the U.S. rate due to small numbers. See Appendix C for details.

Sources:

National Center for Health Statistics
 Delaware Health Statistics Center

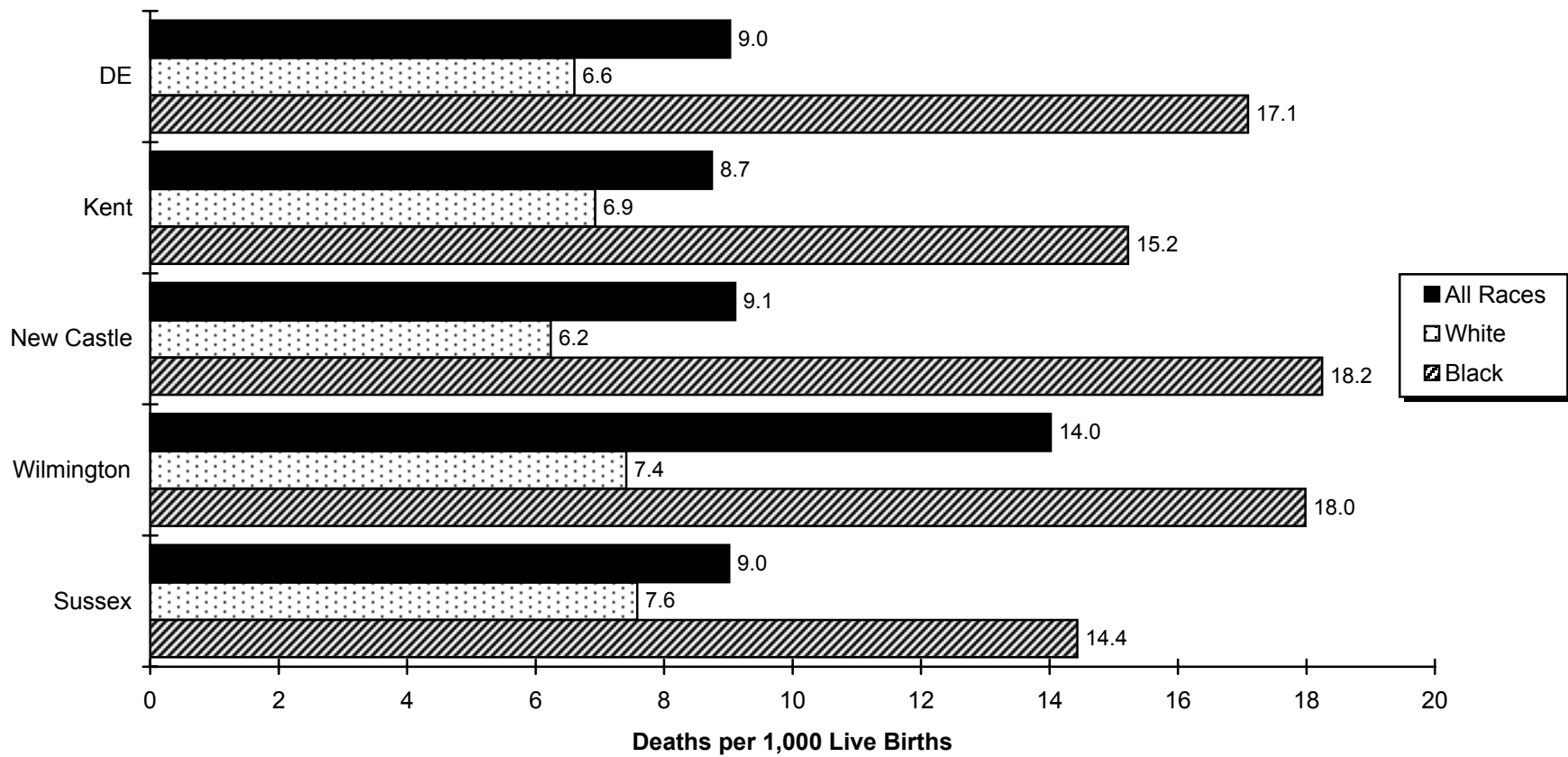
Figure E-1
Five-Year Average Infant Mortality Rates by Race

U.S. and Delaware, 1981-2001



Sources:
 Delaware Health Statistics Center
 National Center for Health Statistics

Figure E-2
Five-Year Average Infant Mortality Rates by Race
Delaware, Counties and the City of Wilmington, 1997-2001



Source:
 Delaware Health Statistics Center

TABLE E-5
 FIVE-YEAR AVERAGE NEONATAL MORTALITY RATES BY RACE
 U.S., DELAWARE, COUNTIES AND CITY OF WILMINGTON, 1981-2001

Area/ Race	1981 -1985	1982 -1986	1983 -1987	1984 -1988	1985 -1989	1986 -1990	1987 -1991	1988 -1992	1989 -1993	1990 -1994	1991 -1995	1992 -1996	1993 -1997	1994 -1998	1995 -1999	1996 -2000	1997 -2001
U.S.																	
All Races	7.4	7.1	6.9	6.7	6.5	6.3	6.1	5.9	5.7	5.4	5.3	5.1	5.0	4.9	4.8	4.7	4.7
White	6.5	6.3	6.0	5.8	5.6	5.3	5.1	4.8	4.6	4.4	4.3	4.2	4.1	4.0	4.0	3.9	3.9
Black	12.6	12.2	11.9	11.8	11.8	11.7	11.6	11.4	11.3	10.9	10.6	10.2	9.9	9.7	9.6	9.5	9.5
Delaware																	
All Races	9.1+	8.9+	8.4+	8.8+	9.0+	8.2+	8.1+	7.6+	7.2+	6.4+	6.0+	5.4	5.3	5.4	5.5+	5.9+	6.4+
White	7.2	7.2+	6.8	7.0+	7.3+	6.5+	6.4+	5.9+	5.5+	4.7	4.5	3.8	3.7	3.7	3.5	4.0	4.4
Black	15.4+	14.4	13.9	14.8+	14.7+	14.1+	13.7+	13.5+	13.2	12.1	11.1	10.7	10.4	10.6	11.9+	12.1+	12.8+
Kent																	
All Races	7.2	6.5	6.8	7.8	7.4	7.1	7.2	6.6	5.6	5.7	4.9	5.0	5.0	5.4	5.5	5.9	6.1
White	6.1	5.7	6.5	7.0	6.4	6.0	5.7	5.2	4.4	4.4	3.6	3.8	2.8	3.4	3.4	4.1	4.6
Black	10.6	8.7	7.5	10.2	10.7	11.2	12.2	11.3	9.6	9.9	8.9	9.3	12.7	12.0	12.0	12.1	11.3
New Castle																	
All Races	9.9	9.7	9.2	9.2	9.5	8.5	8.4	7.9	7.9	6.9	6.4	5.6	5.2	5.0	5.4	6.1	6.6
White	7.7	7.6	7.0	7.1	7.4	6.3	6.4	5.9	5.7	4.8	4.6	3.6	3.6	3.1	3.0	3.7	4.3
Black	17.9	17.1	17.2	17.0	17.4	16.2	15.2	15.0	15.8	13.9	12.6	12.4	10.8	10.8	13.0	13.5	14.2
Wilmington																	
All Races	N/A	N/A	N/A	N/A	N/A	16.8	16.0	15.0	14.3	12.7	11.1	10.5	8.7	8.0	8.7	9.8	9.7
White	N/A	N/A	N/A	N/A	N/A	14.2	13.3	11.5	9.6	8.1	7.6	4.0	4.1	3.8	3.3	5.2	5.1
Black	N/A	N/A	N/A	N/A	N/A	18.4	17.6	17.1	17.1	15.2	13.0	14.2	11.2	10.2	11.8	12.5	12.5
Balance of NC County																	
All Races	N/A	N/A	N/A	N/A	N/A	6.4	6.4	6.1	6.3	5.4	5.3	4.5	4.5	4.3	4.7	5.3	6.0
White	N/A	N/A	N/A	N/A	N/A	5.5	5.7	5.3	5.2	4.5	4.3	3.5	3.5	3.1	3.0	3.6	4.2
Black	N/A	N/A	N/A	N/A	N/A	13.2	12.1	12.4	14.2	12.3	12.1	10.6	10.3	11.4	14.1	14.4	15.6
Sussex																	
All Races	8.2	8.5	7.2	8.3	8.6	8.3	7.8	7.7	6.3	5.6	5.5	5.0	5.6	6.8	6.0	5.3	5.8
White	6.4	7.2	6.0	6.6	8.1	7.8	6.9	6.8	6.1	4.6	4.7	4.8	5.1	6.2	5.5	5.0	4.9
Black	12.6	11.9	10.2	12.5	10.3	9.9	10.3	10.2	7.2	8.3	8.0	6.1	7.1	8.6	7.6	6.6	8.8

Notes:

1. 1997-2001 US data are based on NCHS estimates.
2. N/A indicates data not available.
3. Neonatal mortality rates represent the number of deaths to children under 28 days of age per 1000 live births.
4. + indicates that the Delaware rate is significantly higher than the U.S. rate. No statistical comparisons were made between the county rates and the U.S. rate due to small numbers. See Appendix C for details.

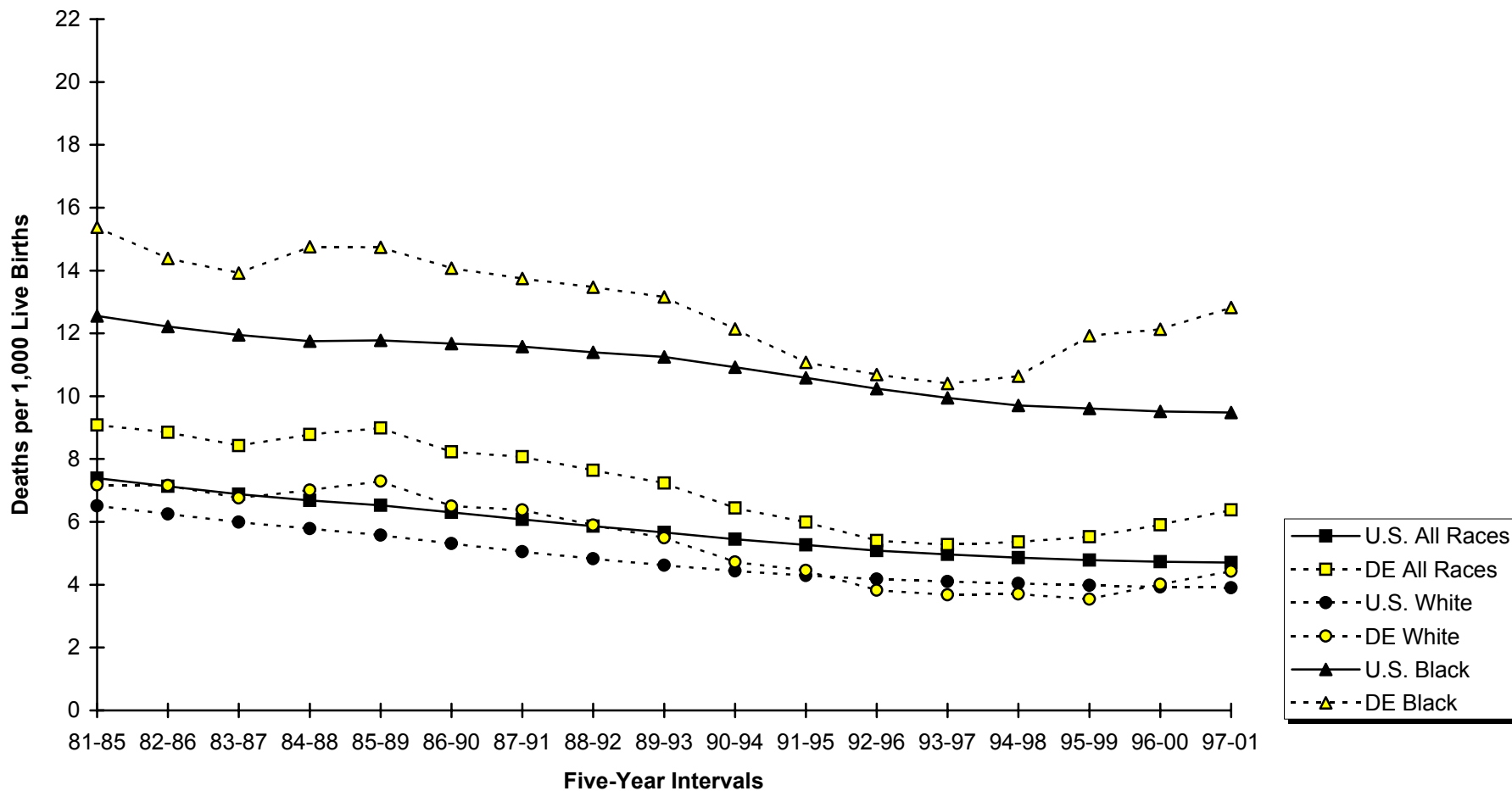
Sources:

National Center for Health Statistics
 Delaware Health Statistics Center

INFANTS

Figure E-3
Five-Year Average Neonatal Mortality Rates by Race

U.S. and Delaware, 1981-2001



Sources:
 Delaware Health Statistics Center
 National Center for Health Statistics

TABLE E-6
 FIVE-YEAR AVERAGE POSTNEONATAL MORTALITY RATES BY RACE
 U.S., DELAWARE, COUNTIES AND CITY OF WILMINGTON, 1981-2001

Area/ Race	1981 -1985	1982 -1986	1983 -1987	1984 -1988	1985 -1989	1986 -1990	1987 -1991	1988 -1992	1989 -1993	1990 -1994	1991 -1995	1992 -1996	1993 -1997	1994 -1998	1995 -1999	1996 -2000	1997 -2001
U.S.																	
All Races	3.8	3.8	3.7	3.7	3.6	3.6	3.5	3.4	3.3	3.2	3.0	2.9	2.7	2.6	2.5	2.4	2.4
White	3.3	3.3	3.2	3.2	3.1	3.0	2.9	2.8	2.7	2.6	2.5	2.4	2.3	2.1	2.0	2.0	1.9
Black	6.5	6.5	6.4	6.2	6.3	6.3	6.3	6.3	6.3	6.0	5.8	5.6	5.4	5.1	5.0	4.8	4.8
Delaware																	
All Races	3.5	3.4	3.4	3.3	3.3	3.1	3.4	3.2	3.1	2.9	2.9	2.5	2.5	2.6	2.6	2.5	2.6
White	2.6-	2.5-	2.5-	2.6-	2.6-	2.4-	2.5	2.3-	2.0-	1.9-	2.0-	1.8-	1.9	2.2	2.2	2.2	2.2
Black	6.7	6.3	6.0	5.8	5.9	5.6	6.2	6.3	6.7	6.1	5.9	5.1	4.3	3.8-	3.9	3.8	4.3
Kent																	
All Races	3.3	3.3	3.0	3.6	3.8	4.0	4.1	4.7	4.1	3.9	3.7	3.5	3.2	3.6	3.0	2.7	2.7
White	3.0	2.9	2.8	3.4	3.5	3.4	3.3	3.6	2.9	2.9	3.0	3.0	3.1	3.7	2.8	2.9	2.4
Black	4.3	4.8	3.8	4.2	4.9	6.5	6.7	8.7	8.3	7.7	6.6	5.8	3.9	3.9	3.7	2.2	3.9
New Castle																	
All Races	3.6	3.5	3.4	3.2	3.0	2.7	3.0	2.9	2.8	2.7	2.6	2.2	2.1	2.3	2.5	2.4	2.5
White	2.6	2.5	2.6	2.4	2.3	2.1	2.2	2.0	1.8	1.7	1.7	1.4	1.4	1.7	1.9	1.8	2.0
Black	7.3	6.9	6.2	6.2	5.7	4.9	5.6	5.8	5.9	5.9	5.7	5.1	4.5	4.3	4.4	4.2	4.0
Wilmington																	
All Races	N/A	N/A	N/A	N/A	N/A	4.2	4.5	4.6	5.2	5.3	5.5	4.8	4.9	4.8	5.0	4.6	4.3
White	N/A	N/A	N/A	N/A	N/A	2.0	0.8	0.8	1.6	1.6	2.5	2.2	2.3	1.9	2.9	1.9	2.3
Black	N/A	N/A	N/A	N/A	N/A	5.4	6.6	6.7	7.2	7.5	7.3	6.3	6.5	6.6	6.3	6.2	5.5
Balance of NC County																	
All Races	N/A	N/A	N/A	N/A	N/A	2.3	2.6	2.5	2.2	2.0	1.9	1.6	1.5	1.7	1.9	1.9	2.1
White	N/A	N/A	N/A	N/A	N/A	2.1	2.3	2.1	1.9	1.7	1.6	1.3	1.3	1.6	1.8	1.8	1.9
Black	N/A	N/A	N/A	N/A	N/A	4.1	4.3	4.7	4.3	4.0	3.9	3.7	2.6	2.2	2.7	2.4	2.9
Sussex																	
All Races	3.6	3.1	3.8	3.5	4.1	3.9	4.4	3.0	3.4	2.7	3.2	2.9	3.4	2.7	2.5	2.8	3.3
White	2.1	1.8	2.2	2.5	2.8	2.7	3.1	1.9	1.8	1.6	2.1	2.1	2.9	2.7	2.5	2.5	2.7
Black	7.4	6.0	7.6	6.0	7.7	6.9	7.7	5.9	8.1	5.4	5.9	4.4	4.0	1.8	2.4	3.8	5.6

INFANTS

Notes:

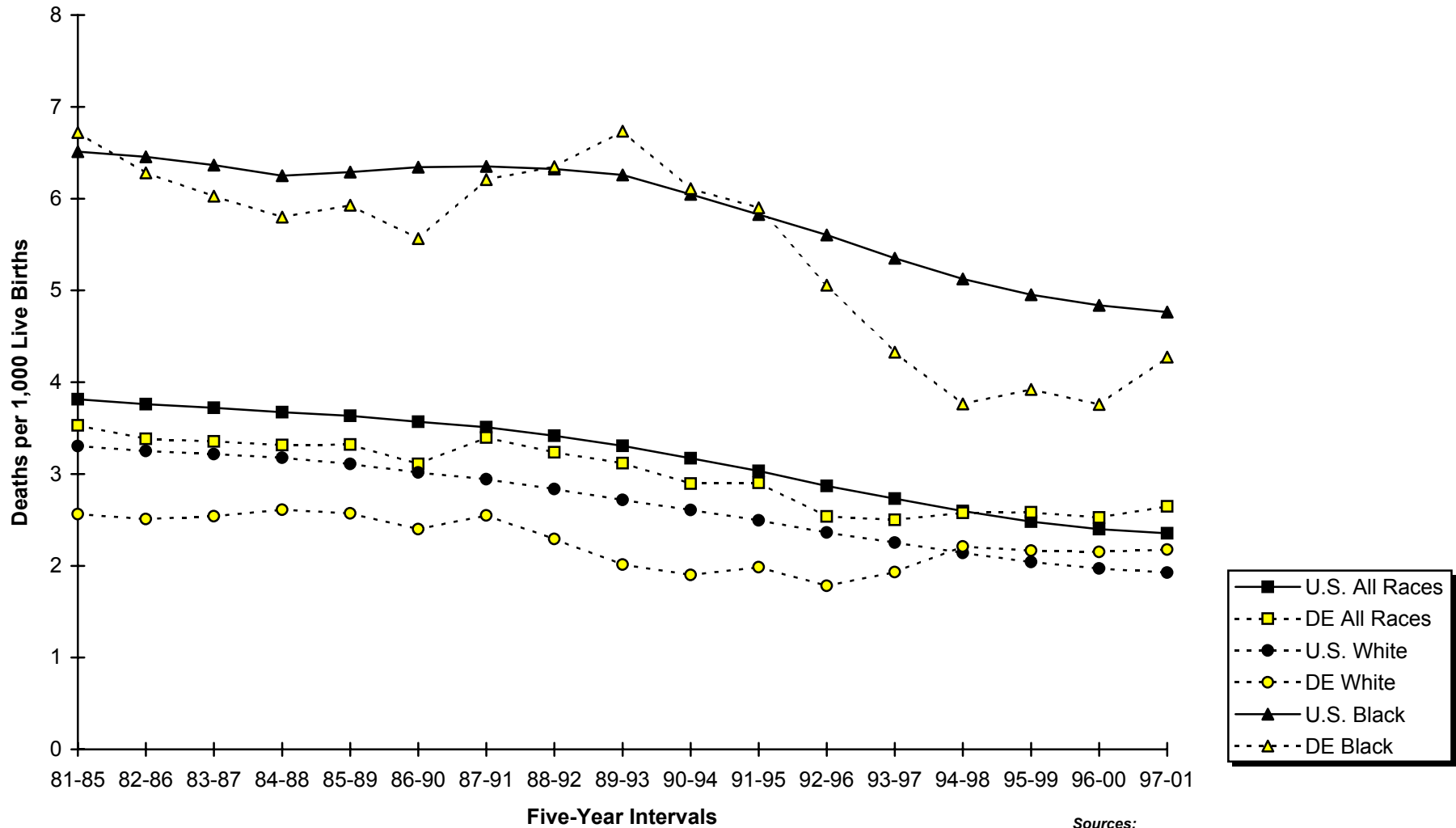
1. 1997-2001 US data based on NCHS estimates.
2. N/A indicates data not available.
3. Postneonatal mortality rates represent the number of deaths to children 28 to 364 days of age per 1000 live births.
4. - indicates that the Delaware rate is significantly lower than the U.S. rate. No statistical comparisons were made between the county rates and the U.S. rate due to small numbers. See Appendix C for details.

Sources:

National Center for Health Statistics
 Delaware Health Statistics Center

Figure E-4
Five-Year Average Postneonatal Mortality Rates by Race

U.S. and Delaware, 1981-2001



Sources:
 Delaware Health Statistics Center
 National Center for Health Statistics

TABLE E-7
FIVE-YEAR AVERAGE
INFANT MORTALITY RATES BY SELECTED RISK FACTORS AND RACE OF MOTHER

DELAWARE, 1997-2001 LIVE BIRTH COHORT

Risk Factor	Race		
	All Races	White	Black
Birth Weight of Child			
<2500	74.6	62.5	93.1
<1500	303.8	279.8	329.8
1500-2499	13.6	14.2	11.7
2500+	2.4	2.3	2.9
Age of Mother			
<20	11.9	8.9	15.2
20-24	10.3	7.4	16.2
25-29	6.5	4.8	13.8
30+	8.3	6.7	16.8
Marital Status of Mother			
Married	6.6	5.7	13.4
Single	12.2	8.6	16.4
Education of Mother			
<12 years	11.8	9.8	16.1
H.S. diploma	10.5	7.5	16.8
1+ years college	5.9	4.4	13.9
Trimester Care Received			
No prenatal care	45.9	44.1	49.4
First	8.0	6.0	15.0
Second	8.6	6.9	12.5
Third	9.7	8.0	9.6
Interval Since Last Live Birth			
<18 months	9.2	7.4	13.4
18+ months	6.7	5.6	10.2

COHRATES

Note:

1. Infant mortality rates represent the number of deaths to children under one year of age per 1,000 live births.

Source:

Delaware Health Statistics Center

TABLE E-8
NUMBER OF INFANT DEATHS BY PLURALITY, BIRTH WEIGHT IN GRAMS, RACE OF MOTHER AND SEX OF CHILD
DELAWARE, 1997-2001 LIVE BIRTH COHORT

Plurality/ Birth Weight	Race and Sex											
	All Races			White			Black			Other		
	Both Sexes	Male	Female	Both Sexes	Male	Female	Both Sexes	Male	Female	Both Sexes	Male	Female
All Births	464	249	215	247	123	124	204	121	83	13	5	8
<2500	348	184	164	167	85	82	171	95	76	10	4	6
<1500	298	158	140	136	70	66	155	84	71	7	4	3
<500	133	67	66	52	24	28	80	43	37	1	0	1
500-999	145	80	65	74	40	34	65	36	29	6	4	2
1000-1499	20	11	9	10	6	4	10	5	5	0	0	0
1500-1999	28	14	14	16	7	9	11	7	4	1	0	1
2000-2499	22	12	10	15	8	7	5	4	1	2	0	2
2500+	116	65	51	80	38	42	33	26	7	3	1	2
2500-2999	38	17	21	25	7	18	11	10	1	2	0	2
3000-3499	47	27	20	37	19	18	9	7	2	1	1	0
3500-3999	24	16	8	14	10	4	10	6	4	0	0	0
4000-4499	6	5	1	3	2	1	3	3	0	0	0	0
4500+	1	0	1	1	0	1	0	0	0	0	0	0
Unknown	0	0	0	0	0	0	0	0	0	0	0	0
Single Births	365	200	165	187	96	91	169	101	68	9	3	6
<2500	251	136	115	109	59	50	136	75	61	6	2	4
<1500	210	112	98	85	46	39	121	64	57	4	2	2
<500	88	43	45	30	12	18	57	31	26	1	0	1
500-999	105	60	45	46	28	18	56	30	26	3	2	1
1000-1499	17	9	8	9	6	3	8	3	5	0	0	0
1500-1999	21	12	9	10	5	5	10	7	3	1	0	1
2000-2499	20	12	8	14	8	6	5	4	1	1	0	1
2500+	114	64	50	78	37	41	33	26	7	3	1	2
2500-2999	36	16	20	23	6	17	11	10	1	2	0	2
3000-3499	47	27	20	37	19	18	9	7	2	1	1	0
3500-3999	24	16	8	14	10	4	10	6	4	0	0	0
4000-4499	6	5	1	3	2	1	3	3	0	0	0	0
4500+	1	0	1	1	0	1	0	0	0	0	0	0
Unknown	0	0	0	0	0	0	0	0	0	0	0	0
Plural Births	99	49	50	60	27	33	35	20	15	4	2	2
<2500	97	48	49	58	26	32	35	20	15	4	2	2
<1500	88	46	42	51	24	27	34	20	14	3	2	1
<500	45	24	21	22	12	10	23	12	11	0	0	0
500-999	40	20	20	28	12	16	9	6	3	3	2	1
1000-1499	3	2	1	1	0	1	2	2	0	0	0	0
1500-1999	7	2	5	6	2	4	1	0	1	0	0	0
2000-2499	2	0	2	1	0	1	0	0	0	1	0	1
2500+	2	1	1	2	1	1	0	0	0	0	0	0
2500-2999	2	1	1	2	1	1	0	0	0	0	0	0
3000-3499	0	0	0	0	0	0	0	0	0	0	0	0
3500-3999	0	0	0	0	0	0	0	0	0	0	0	0
4000-4499	0	0	0	0	0	0	0	0	0	0	0	0
4500+	0	0	0	0	0	0	0	0	0	0	0	0
Unknown	0	0	0	0	0	0	0	0	0	0	0	0

PLBWRCSX

Note:

1. Infant deaths refer to deaths to children under one year of age.

Source:

Delaware Health Statistics Center

TABLE E-9
NUMBER OF NEONATAL DEATHS BY PLURALITY, BIRTH WEIGHT IN GRAMS, RACE OF MOTHER AND SEX OF CHILD
DELAWARE, 1997-2001 LIVE BIRTH COHORT

Plurality/ Birth Weight	Race and Sex											
	All Races			White			Black			Other		
	Both Sexes	Male	Female	Both Sexes	Male	Female	Both Sexes	Male	Female	Both Sexes	Male	Female
All Births	338	183	155	170	88	82	160	92	68	8	3	5
<2500	299	164	135	141	75	66	152	87	65	6	2	4
<1500	272	148	124	124	65	59	143	81	62	5	2	3
<500	129	66	63	50	23	27	78	43	35	1	0	1
500-999	126	72	54	66	37	29	56	33	23	4	2	2
1000-1499	17	10	7	8	5	3	9	5	4	0	0	0
1500-1999	19	11	8	10	6	4	8	5	3	1	0	1
2000-2499	8	5	3	7	4	3	1	1	0	0	0	0
2500+	39	19	20	29	13	16	8	5	3	2	1	1
2500-2999	15	4	11	13	3	10	1	1	0	1	0	1
3000-3499	14	9	5	10	6	4	3	2	1	1	1	0
3500-3999	8	4	4	6	4	2	2	0	2	0	0	0
4000-4499	2	2	0	0	0	0	2	2	0	0	0	0
4500+	0	0	0	0	0	0	0	0	0	0	0	0
Unknown	0	0	0	0	0	0	0	0	0	0	0	0
Single Births	251	137	114	117	63	54	128	72	56	6	2	4
<2500	214	119	95	90	51	39	120	67	53	4	1	3
<1500	192	105	87	78	43	35	111	61	50	3	1	2
<500	85	43	42	29	12	17	55	31	24	1	0	1
500-999	93	54	39	42	26	16	49	27	22	2	1	1
1000-1499	14	8	6	7	5	2	7	3	4	0	0	0
1500-1999	15	9	6	6	4	2	8	5	3	1	0	1
2000-2499	7	5	2	6	4	2	1	1	0	0	0	0
2500+	37	18	19	27	12	15	8	5	3	2	1	1
2500-2999	13	3	10	11	2	9	1	1	0	1	0	1
3000-3499	14	9	5	10	6	4	3	2	1	1	1	0
3500-3999	8	4	4	6	4	2	2	0	2	0	0	0
4000-4499	2	2	0	0	0	0	2	2	0	0	0	0
4500+	0	0	0	0	0	0	0	0	0	0	0	0
Unknown	0	0	0	0	0	0	0	0	0	0	0	0
Plural Births	87	46	41	53	25	28	32	20	12	2	1	1
<2500	85	45	40	51	24	27	32	20	12	2	1	1
<1500	80	43	37	46	22	24	32	20	12	2	1	1
<500	44	23	21	21	11	10	23	12	11	0	0	0
500-999	33	18	15	24	11	13	7	6	1	2	1	1
1000-1499	3	2	1	1	0	1	2	2	0	0	0	0
1500-1999	4	2	2	4	2	2	0	0	0	0	0	0
2000-2499	1	0	1	1	0	1	0	0	0	0	0	0
2500+	2	1	1	2	1	1	0	0	0	0	0	0
2500-2999	2	1	1	2	1	1	0	0	0	0	0	0
3000-3499	0	0	0	0	0	0	0	0	0	0	0	0
3500-3999	0	0	0	0	0	0	0	0	0	0	0	0
4000-4499	0	0	0	0	0	0	0	0	0	0	0	0
4500+	0	0	0	0	0	0	0	0	0	0	0	0
Unknown	0	0	0	0	0	0	0	0	0	0	0	0

Note:

1. Neonatal deaths refer to deaths to children under 28 days of age.

NEOPLBW

Source:

Delaware Health Statistics Center

TABLE E-10
RANKING OF FIVE-YEAR AVERAGE INFANT MORTALITY RATES

U.S., 50 STATES AND DISTRICT OF COLUMBIA, 1996-2000

State	All Races		White		Black	
	Rate	Rank	Rate	Rank	Rate	Rank
Alabama	9.9	3	7.3	4	15.2	25
Alaska**	6.6	33 *	5.6	37 *	12.4	43
Arizona	7.1	26 *	6.6	12	18.3	5
Arkansas	8.6	7 *	7.4	3	13.5	36
California	5.7	45	5.3	42	13.3	39 *
Colorado	6.6	33 *	6.3	18 *	16.6	13
Connecticut	6.7	32	5.7	35 *	14.3	29
Delaware	8.3	11 *	6.1	22 *	15.8	18 *
District of Columbia	13.5	1	4.6	51	17.0	8 *
Florida	7.2	25	5.7	35 *	12.8	42
Georgia	8.6	7 *	5.9	29 *	13.9	31
Hawaii**	6.9	29 *	4.7	49 *	12.0	44
Idaho**	7.1	26 *	7.1	5	13.3	39 *
Illinois	8.5	9	6.4	15 *	17.6	6 *
Indiana	8.1	14 *	7.0	6 *	16.8	12
Iowa	6.4	40 *	6.0	25 *	20.2	1
Kansas	7.4	20 *	6.8	9 *	15.3	23 *
Kentucky	7.4	20 *	6.9	8	13.1	41
Louisiana	9.2	5	6.1	22 *	13.6	34 *
Maine**	5.1	49	5.1	44 *	18.9	3
Maryland	8.3	11 *	5.2	43	14.7	28
Massachusetts	5.0	50 *	4.7	49 *	9.1	49
Michigan	8.1	14 *	6.1	22 *	17.6	6 *
Minnesota	5.9	44	5.1	44 *	14.9	26
Mississippi	10.5	2	7.0	6 *	14.8	27
Missouri	7.6	18	6.0	25 *	16.5	14 *
Montana**	6.8	31	6.3	18 *	15.5	21
Nebraska	7.5	19	6.8	9 *	18.5	4
Nevada	6.6	33 *	5.9	29 *	14.1	30
New Hampshire**	5.0	50 *	5.0	48	13.4	37 *
New Jersey	6.5	38 *	5.1	44 *	13.8	32
New Mexico**	6.6	33 *	6.3	18 *	17.0	8 *
New York	6.5	38 *	5.5	39 *	11.2	47
North Carolina	9.1	6	6.7	11	16.0	16 *
North Dakota**	7.0	28	6.5	13 *	4.7	51
Ohio	7.9	17	6.5	13 *	15.8	18 *
Oklahoma	8.3	11 *	7.7	1 *	15.7	20
Oregon	5.6	46	5.5	39 *	13.4	37 *
Pennsylvania	7.4	20 *	6.0	25 *	16.5	14 *
Rhode Island	6.2	42 *	5.8	32 *	11.7	45
South Carolina	9.3	4	6.0	25 *	15.4	22
South Dakota**	7.4	20 *	5.9	29 *	19.8	2
Tennessee	8.4	10	6.4	15 *	16.0	16 *
Texas	6.2	42 *	5.6	37 *	11.6	46
Utah**	5.5	47 *	5.4	41	11.0	48
Vermont**	6.4	40 *	6.4	15 *	7.3	50
Virginia	7.4	20 *	5.8	32 *	13.6	34 *
Washington	5.5	47 *	5.1	44 *	13.7	33
West Virginia	8.0	16	7.7	1 *	15.3	23 *
Wisconsin	6.9	29 *	5.8	32 *	16.9	11
Wyoming**	6.6	33 *	6.2	21	17.0	8 *
United States	7.1		5.9		14.4	

Notes:

INFSTATE

1. *Indicates a tied rank.
2. **Rate and rank for the black population should be interpreted with caution since the rate is based on less than 50 infant deaths.
3. Infant mortality rates represent the number of deaths under one year of age per 1,000 live births.
4. Infant mortality rates in this table may not match rates in the Infant Mortality Section of this report due to different data sources.
5. It should be noted that rankings do not have particular value for identifying population risk groups or in suggesting appropriate strategies or policy initiatives.

Sources:

Delaware Health Statistics Center
National Center for Health Statistics

Figure E-5

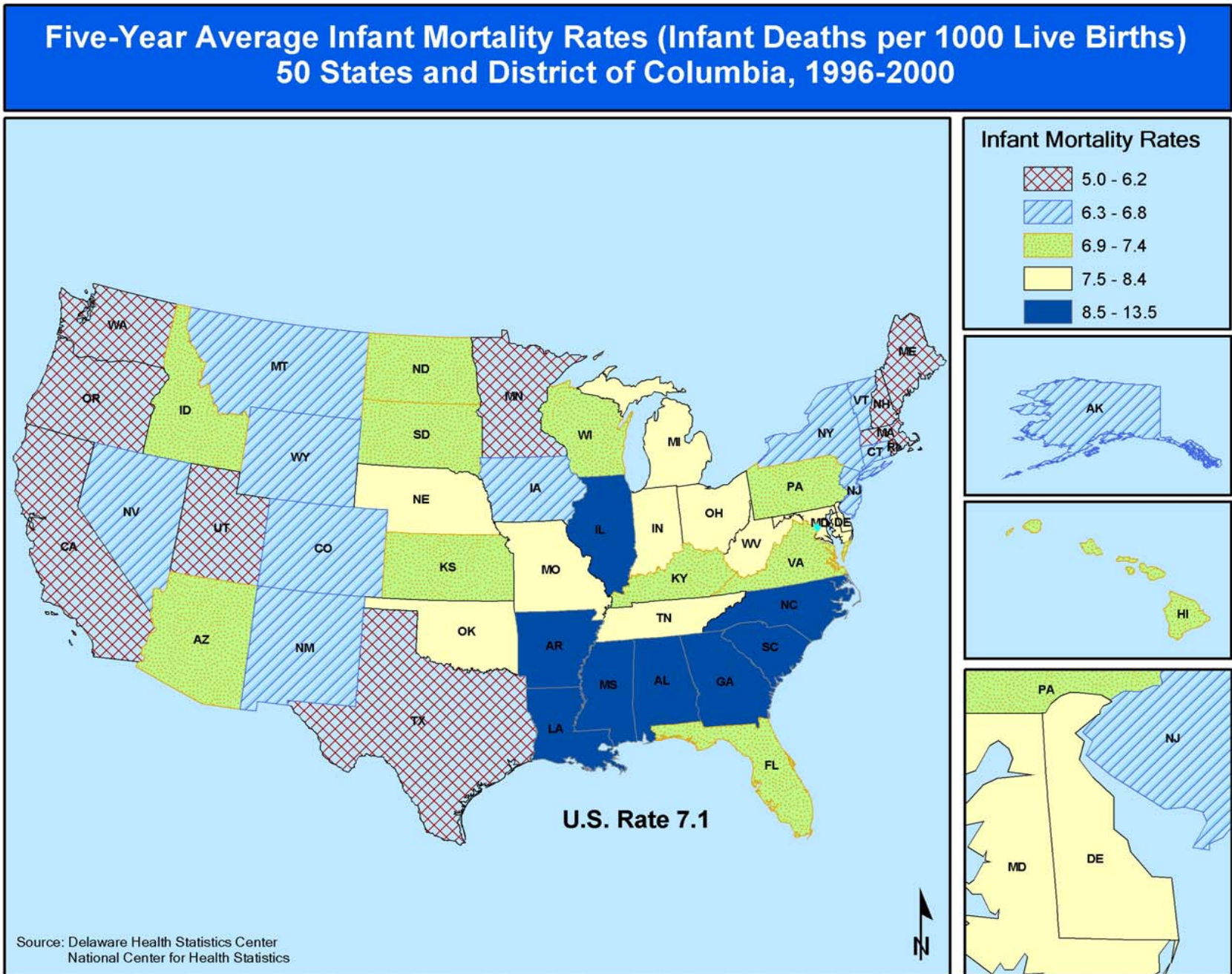


TABLE E-11
RANKING OF FIVE-YEAR AVERAGE NEONATAL MORTALITY RATES

U.S., 50 STATES AND DISTRICT OF COLUMBIA, 1996-2000

State	All Races		White		Black	
	Rate	Rank	Rate	Rank	Rate	Rank
Alabama	6.3	5	4.5	7 *	10.2	25 *
Alaska**	3.2	51	2.9	51	5.0	49
Arizona	4.6	29 *	4.4	12 *	11.5	9
Arkansas	5.1	17 *	4.4	12 *	8.2	40
California	3.8	41 *	3.5	41 *	8.3	39
Colorado	4.4	34 *	4.2	18 *	11.1	13 *
Connecticut	5.0	20 *	4.3	17	10.5	20 *
Delaware	5.8	8 *	3.9	25 *	11.9	6 *
District of Columbia	9.5	1	3.2	49 *	11.9	6 *
Florida	4.7	26 *	3.7	34 *	8.4	37 *
Georgia	5.8	8 *	3.9	25 *	9.7	29
Hawaii**	4.8	23 *	3.5	41 *	8.5	36
Idaho**	4.7	26 *	4.6	5 *	10.6	18 *
Illinois	5.7	10	4.5	7 *	11.2	11 *
Indiana	5.3	13 *	4.7	3 *	10.5	20 *
Iowa	4.2	36	4.0	23 *	12.1	5
Kansas	4.8	23 *	4.5	7 *	9.8	27 *
Kentucky	4.7	26 *	4.4	12 *	8.4	37 *
Louisiana	5.9	7	3.9	25 *	8.8	35
Maine**	3.6	47 *	3.6	37 *	12.6	3
Maryland	6.0	6	3.6	37 *	10.7	17
Massachusetts	3.8	41 *	3.6	37 *	6.7	47
Michigan	5.5	11	4.1	20 *	11.9	6 *
Minnesota	3.8	41 *	3.4	46 *	9.6	30
Mississippi	6.5	2 *	4.1	20 *	9.4	31
Missouri	4.9	22	3.9	25 *	10.9	15
Montana**	3.9	39 *	3.6	37 *	10.4	22 *
Nebraska	5.1	17 *	4.6	5 *	12.3	4
Nevada	3.8	41 *	3.4	46 *	7.7	41 *
New Hampshire**	3.7	46	3.7	34 *	7.5	44
New Jersey	4.6	29 *	3.7	34 *	9.3	32
New Mexico**	3.9	39 *	3.8	32 *	12.9	2
New York	4.6	29 *	3.9	25 *	7.6	43
North Carolina	6.4	4	4.7	3 *	11.3	10
North Dakota**	4.5	33	4.4	12 *	2.3	50
Ohio	5.3	13 *	4.5	7 *	10.4	22 *
Oklahoma	5.0	20 *	4.8	2	9.2	33
Oregon**	3.6	47 *	3.5	41 *	7.0	45
Pennsylvania	5.2	15 *	4.2	18 *	11.2	11 *
Rhode Island**	4.8	23 *	4.5	7 *	8.9	34
South Carolina	6.5	2 *	4.1	20 *	11.1	13 *
South Dakota**	4.0	38	3.5	41 *	13.2	1
Tennessee	5.4	12	4.0	23 *	10.4	22 *
Texas	3.8	41 *	3.4	46 *	6.9	46
Utah**	3.5	49	3.5	41 *	6.2	48
Vermont**	4.4	34 *	4.4	12 *	0.0	51
Virginia	5.2	15 *	3.9	25 *	9.8	27 *
Washington	3.4	50	3.2	49 *	7.7	41 *
West Virginia**	5.1	17 *	4.9	1	10.6	18 *
Wisconsin	4.6	29 *	3.9	25 *	10.8	16
Wyoming**	4.1	37	3.8	32 *	10.2	25 *
United States	4.7		3.9		9.5	

Notes:

1. *Indicates a tied rank.
2. **Rate and rank for the black population should be interpreted with caution since the rate is based on less than 50 neonatal deaths.
3. Neonatal mortality rates represent the number of deaths under 28 days of age per 1,000 live births.
4. Neonatal mortality rates in this table may not match rates in the Infant Mortality Section of this report due to different data sources.
5. It should be noted that rankings do not have particular value for identifying population risk groups or in suggesting appropriate strategies or policy initiatives.

Sources:

Delaware Health Statistics Center
National Center for Health Statistics