

# DELAWARE VITAL STATISTICS ANNUAL REPORT MORTALITY, 2014



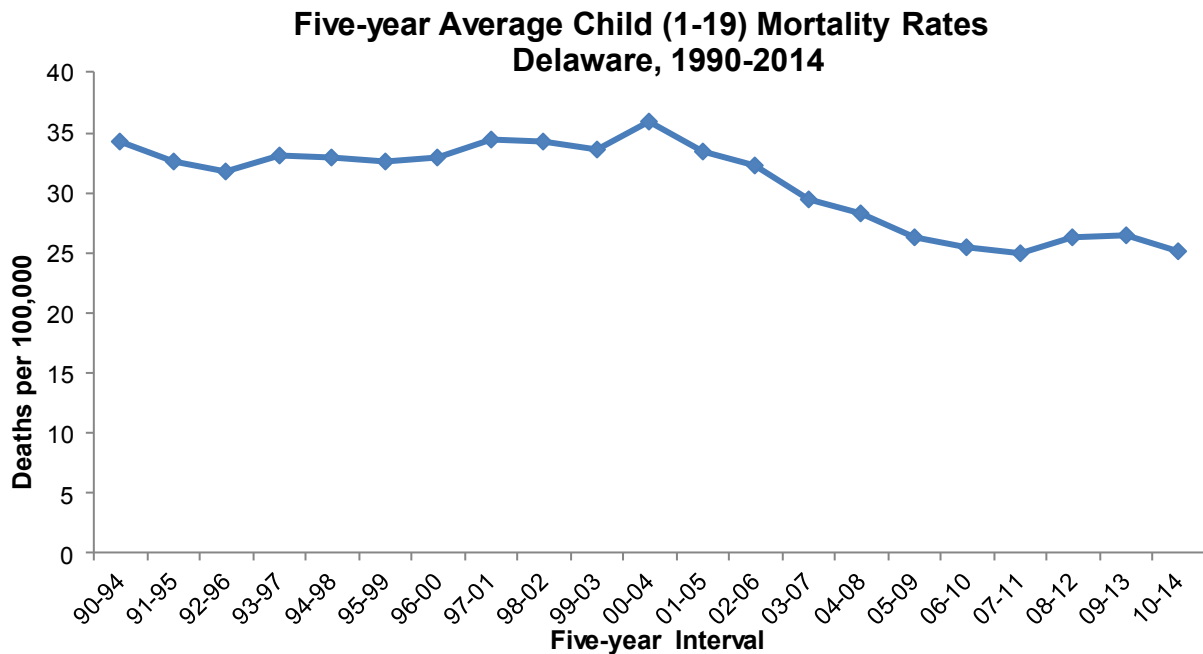
*Suggested Citation:*

Delaware Health Statistics Center. *Delaware Vital Statistics Annual Report, 2014*.  
Delaware Health and Social Services, Division of Public Health: 2017.

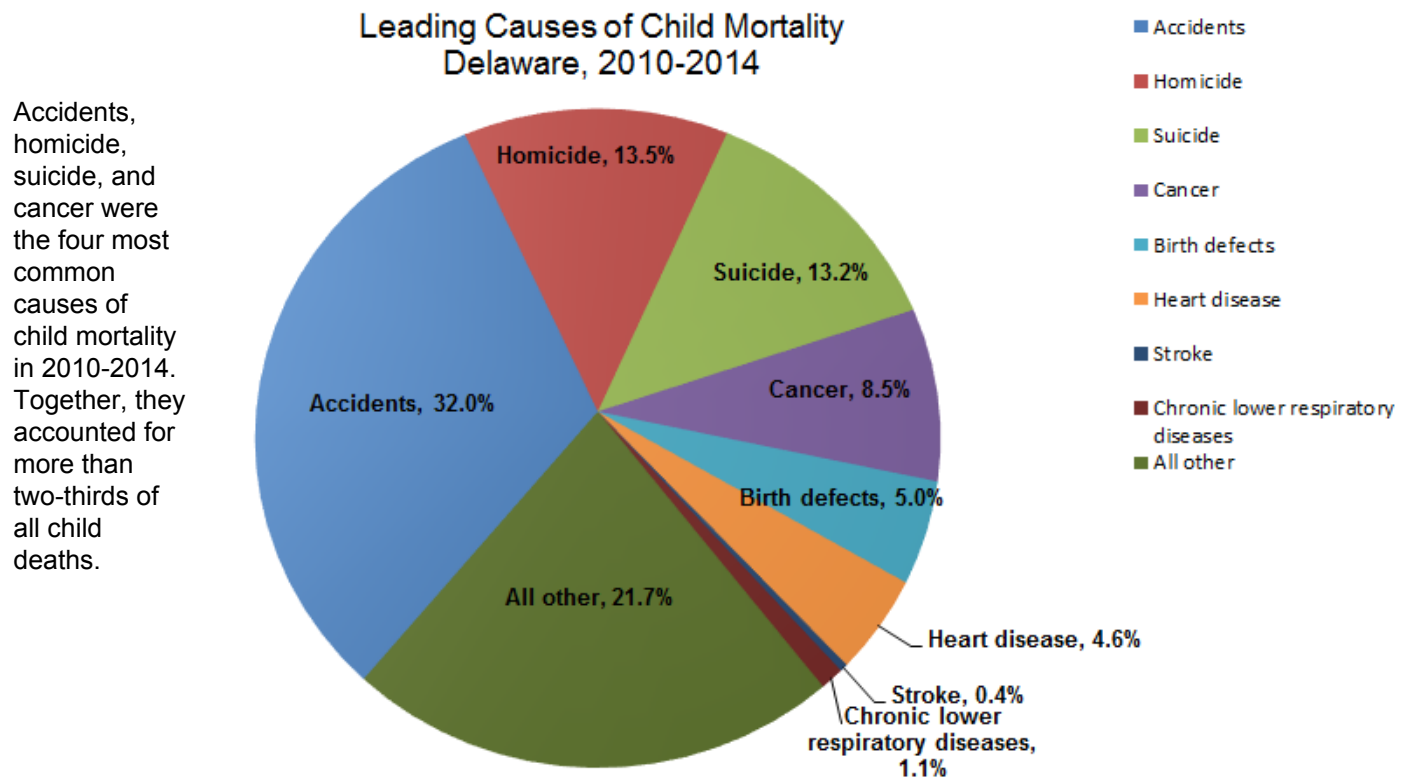
## CHILD MORTALITY

From 2010 to 2014, 281 children and adolescents between the ages of 1 and 19 died in Delaware, representing 0.7 percent of the total deaths that occurred during that time. Males accounted for 64 percent of all child deaths in 2010-2014.

After small fluctuations throughout the 1990s, the mortality rate for children ages 1 to 19 began to decline. Since its peak of 36 in 2000-2004, the rate decreased 30 percent, to 25 deaths per 100,000 children.



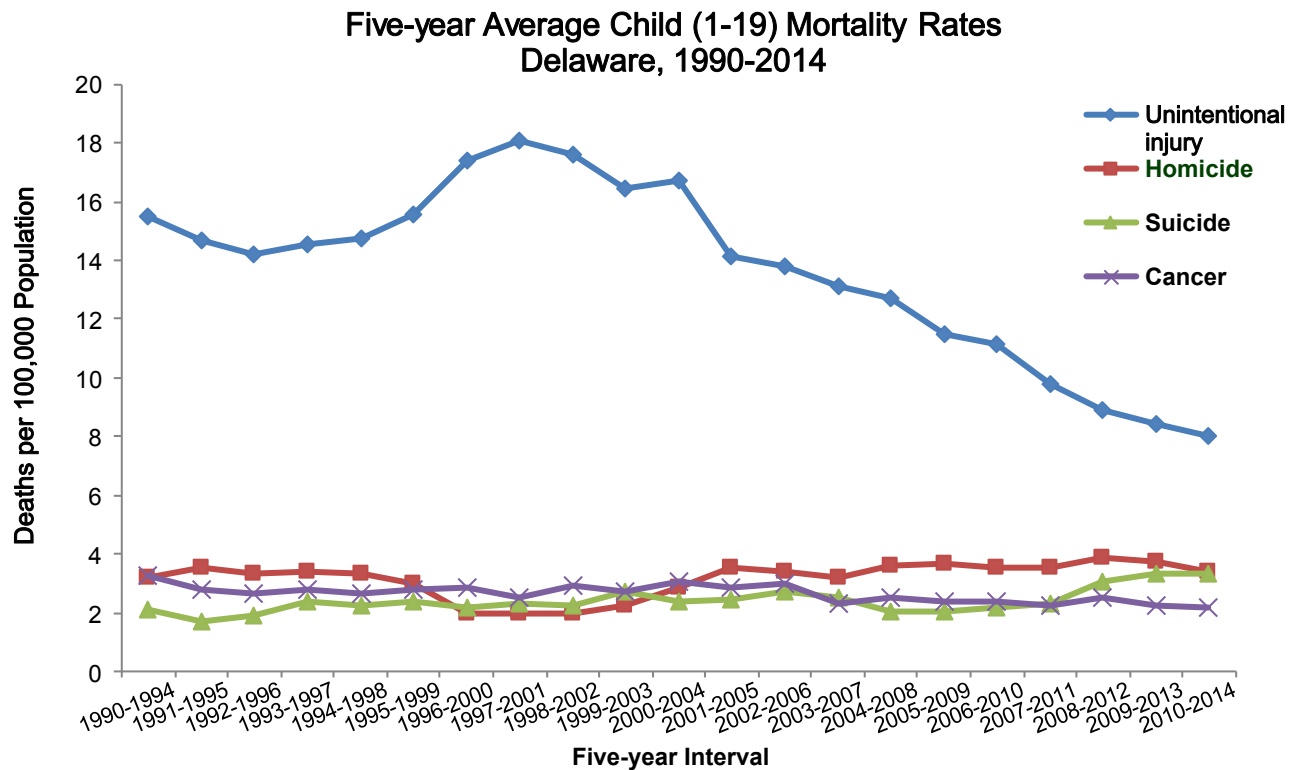
Source: Delaware Health and Social Services, Division of Public Health, Delaware Health Statistics Center



Source: Delaware Health and Social Services, Division of Public Health, Delaware Health Statistics Center

## CHILD MORTALITY

From 2001-2005 to 2010-2014, rates for three of the four leading causes of child mortality declined. Unintentional injury mortality rates declined 43 percent; cancer mortality rates fell 25 percent; and homicide mortality rates decreased 6 percent. Suicide mortality rates increased 32 percent to 3.3 deaths per 100,000 children.



Source: Delaware Health and Social Services, Division of Public Health, Delaware Health Statistics Center

The most common causes of child deaths in 2010-2014 are:

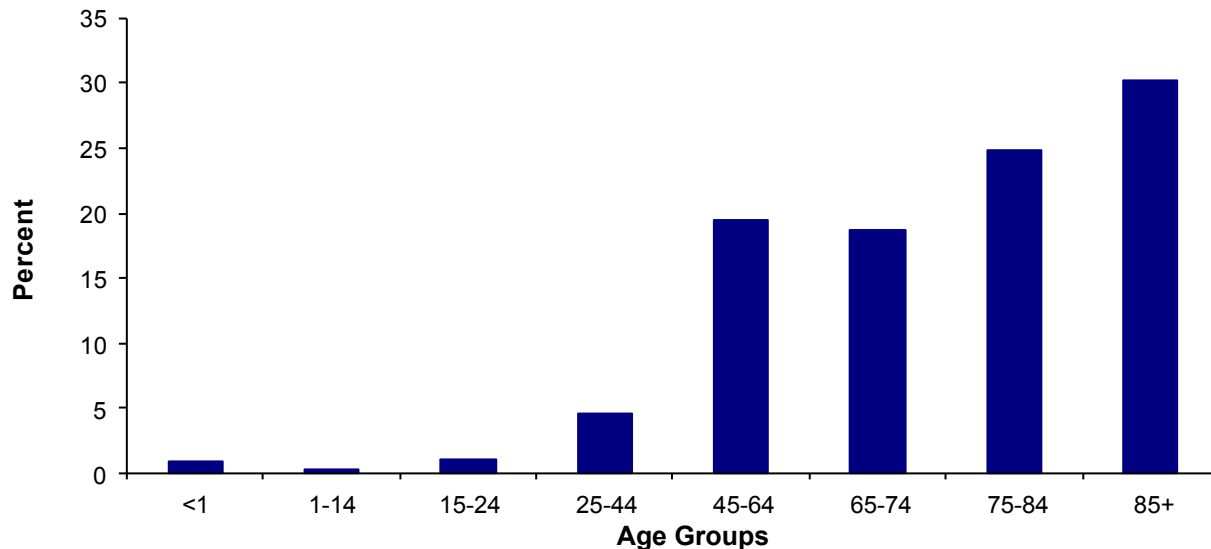
- Motor vehicle crashes accounted for 57 percent of all deaths due to unintentional injuries. The second and third most common causes of unintentional injury deaths of children were poisoning and drowning, which accounted for 16 and 11 percent of deaths, respectively.
- Most child homicides were due to firearms (74 percent) and fire/burning (8 percent).
- The majority of child cancer deaths were due to brain cancer (42 percent) and leukemia (25 percent).
- Suffocation, followed by firearms, were the most common methods of suicide, and accounted for 49 and 32 percent of the total suicide deaths.

## MORTALITY

More Delaware residents died in 2014 than in 2013. A total of 8,252 residents died, 74 of whom were infants under the age of 1. Deaths were split almost equally between males and females. Cancer and heart disease were the most common causes of death, accounting for 47 percent of all deaths in 2014.

- Thirty percent of the Delawareans who died in 2014 were 85 or older. Deaths of those 75 and older accounted for more than half of all deaths.

### Percent of Deaths by Age Delaware, 2014



Source: Delaware Health and Social Services, Division of Public Health, Delaware Health Statistics Center

- A Delaware resident born in 2014 could expect to live an average of 79.6 years.
- Life expectancy at birth varied by race and sex; white females had the highest life expectancy (82.5 years) while black males had the lowest (73.8 years).
- In 1989, 80 percent of Delaware decedents were buried and 15 percent were cremated. By 2014, the distribution had shifted: 49 percent of decedents were buried and 46 percent were cremated.
- In 2014, the 10 leading causes of death for residents of all ages changed slightly from the top 10 in 2013. Septicemia moved down into the tenth leading cause of death, whereas influenza moved up to the ninth leading cause of death.

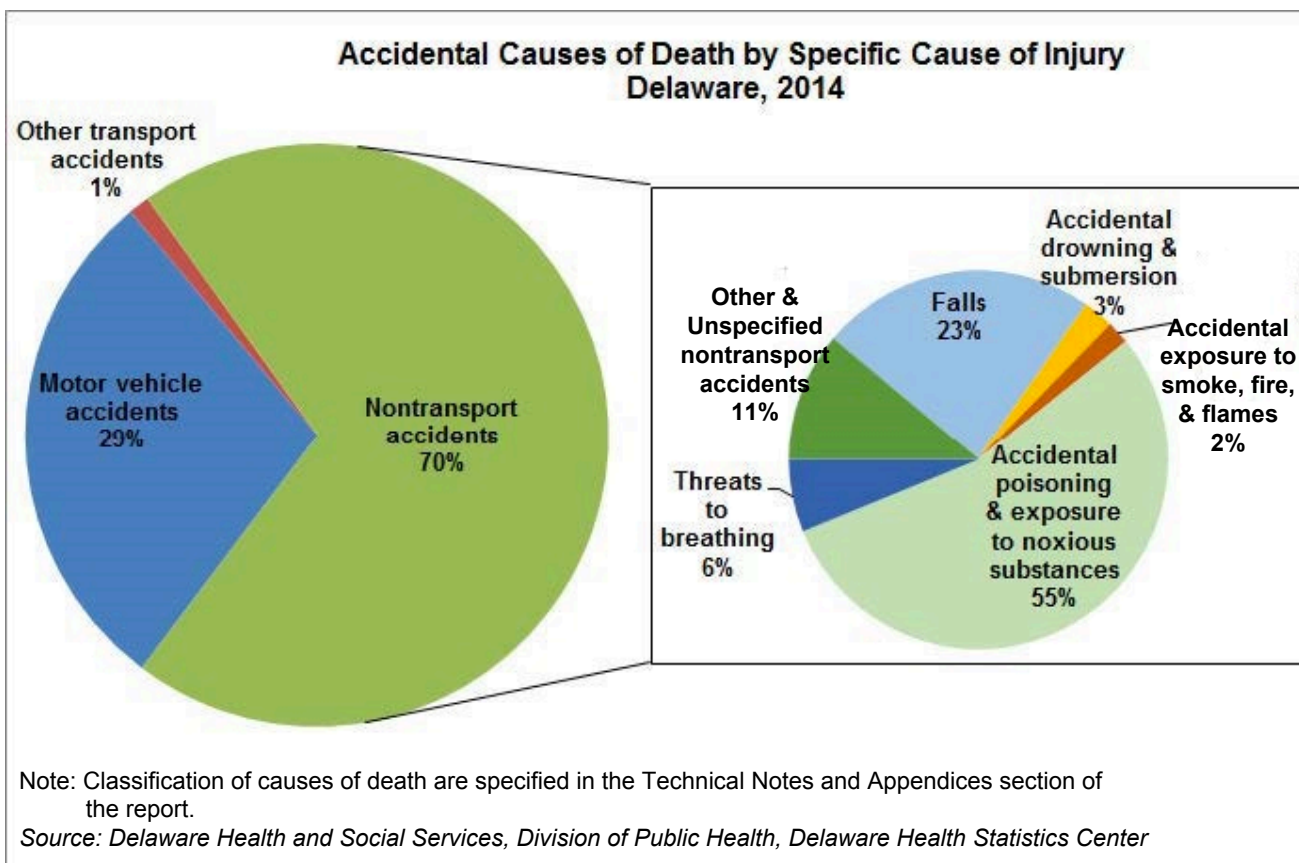
### Number of Deaths by Leading Cause, Delaware, 2014

Rank	Leading Cause of Death	Number
1	Malignant neoplasms	1,972
2	Diseases of heart	1,917
3	Chronic lower respiratory diseases	458
4	Cerebrovascular diseases	439
5	Accidents (unintentional injuries)	436
6	Diabetes mellitus	226
7	Alzheimer's disease	188
8	Nephritis, nephrotic syndrome & nephrosis	172
9	Influenza & pneumonia	156
10	Septicemia	136

Source: Delaware Health and Social Services, Division of Public Health, Delaware Health Statistics Center

## MORTALITY

- Of the 436 deaths due to unintentional injury in 2014 (5.3 percent of all deaths), 29 percent were due to motor vehicle accidents and 70 percent were due to non-transport accidents. More than half of the 306 non-transport accidents were caused by unintentional poisonings; the majority (98 percent) of unintentional poisonings were drug-induced poisonings.
- For the sixth year, unintentional poisonings surpassed motor vehicle injuries and became the leading cause of unintentional injury death in 2014.
  - Poisonings were the cause of the most unintentional injuries for white males and females, followed by motor vehicle accidents. Motor vehicle accidents and poisoning were equally the greatest number of unintentional injuries for black males. Black females, although differing by only one, had more motor vehicle accidents than poisonings.
- In 2010-2014, accidents were the number one cause of death for people 1-44 years of age, and they were responsible for 53 percent of all deaths of people 15-24 years of age. For decedents ages 15-24, accidents, homicides, and suicides were the three most frequent causes of death and accounted for more than three-quarters of total deaths.

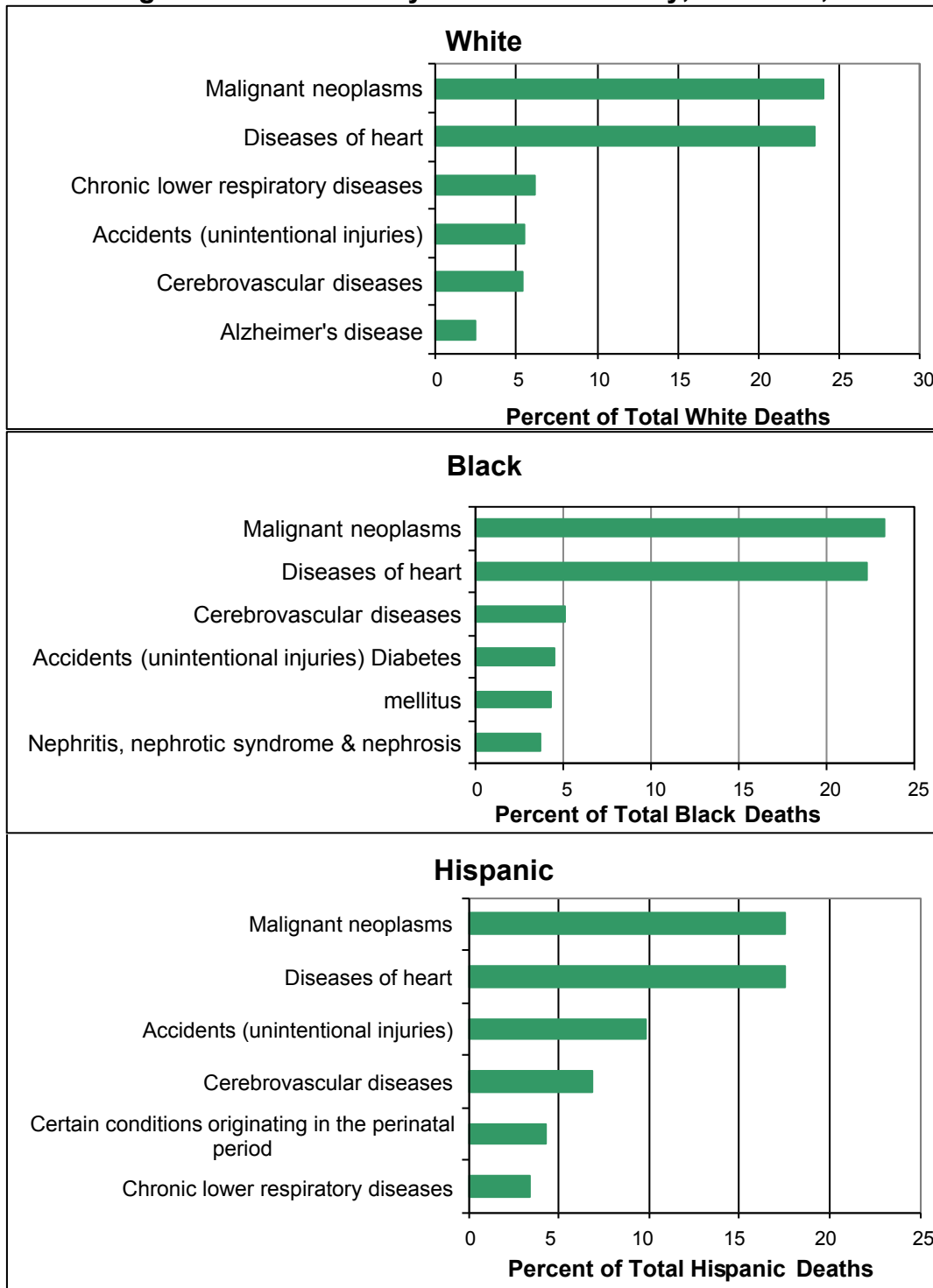




**MORTALITY**

The leading causes of death varied by race and ethnic group. In 2014, the most common causes of death for white, black, and Hispanic Delawareans were:

**Leading Causes of Death by Race and Ethnicity, Delaware, 2014**



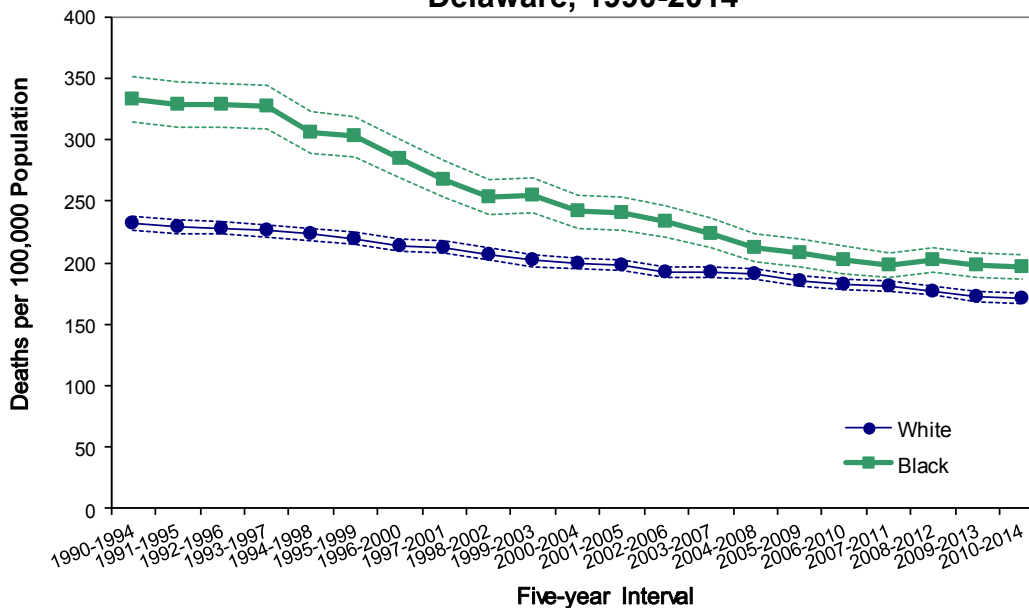
Source: Delaware Health and Social Services, Division of Public Health, Delaware Health Statistics Center

## MORTALITY

Cancer mortality rates have decreased in all three counties since the early 1990s. In 2010-2014, the five-year age-adjusted cancer mortality rates were 158.5 in Sussex County, 172.7 in New Castle County, and in Kent County 199.5 deaths per 100,000 population. The cancer mortality rate in Wilmington exceeded all counties at 212.5 deaths per 100,000 population.

Cancer mortality rates for black and white decedents followed the same declining trend, and though the gap between black and white cancer mortality rates has narrowed, black cancer mortality rates in 2010-2014 remained higher than white rates.

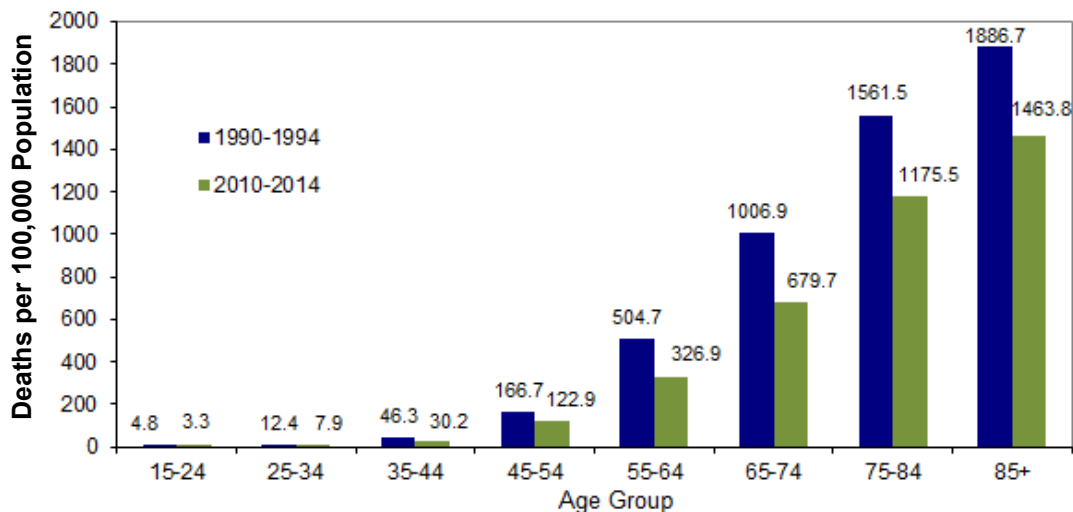
### Five-year Age-Adjusted Cancer Mortality rates by Race Delaware, 1990-2014



Source: Delaware Health and Social Services, Division of Public Health, Delaware Health Statistics Center

The same decreases seen in the age-adjusted cancer mortality rates were reflected in the age-specific rates as well. Cancer mortality rates declined for all age groups between 1990-1994 and 2010-2014. The 25-34 and 55-64 age groups experienced the largest decreases.

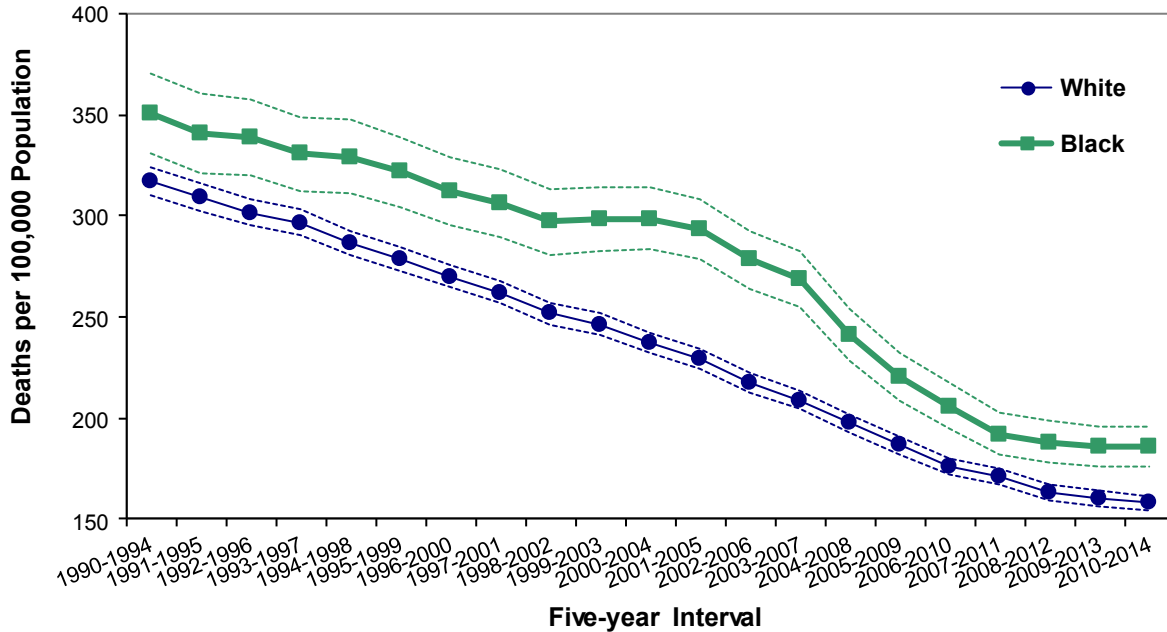
### Five-Year Average Age-Specific Cancer Mortality Rates Delaware, 1990-1994 and 2010-2014



Source: Delaware Health and Social Services, Division of Public Health, Delaware Health Statistics Center

Heart disease was the second most common cause of death for both black and white Delawareans in 2010-2014. Both black and white heart disease mortality rates have declined significantly since 1990-1994, with white rates declining 49.09 percent and black rates declining 47.1 percent.

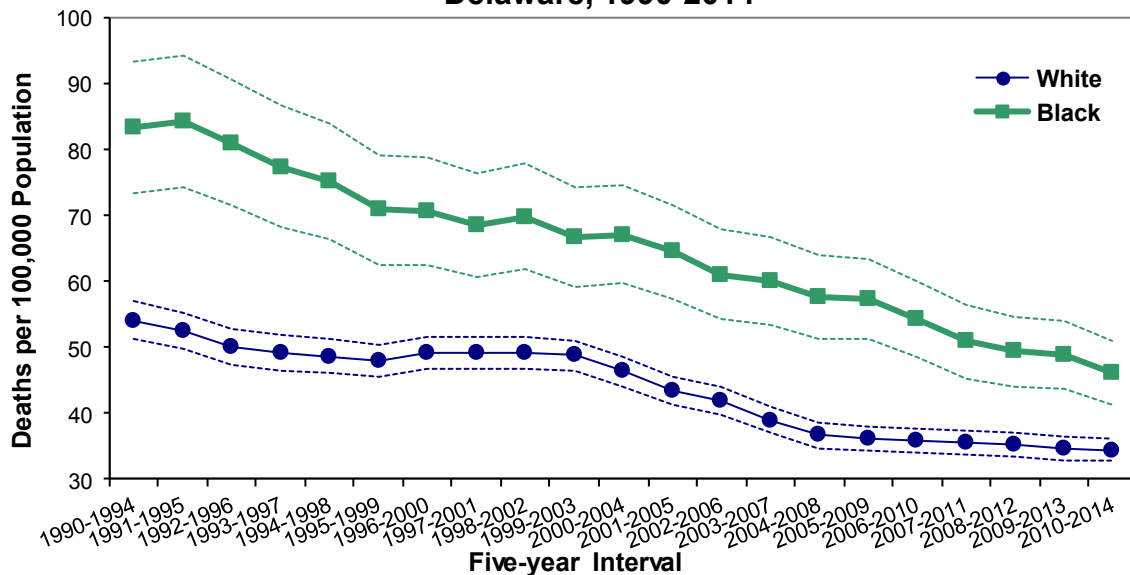
**Five-year Age-Adjusted Heart Disease Mortality Rates by Race  
Delaware, 1990-2014**



Source: Delaware Health and Social Services, Division of Public Health, Delaware Health Statistics Center

Stroke mortality rates for both races continued their declining trends between 1990-1994 and 2010-2014, with rates for white rates decreasing 36 percent and black rates declining 45 percent. In 2010-2014, the black stroke mortality rate of 46.2 deaths per 100,000 remained approximately 34 percent higher than the white rate of 34.5.

**Five-year Age-Adjusted Stroke Mortality Rates by Race  
Delaware, 1990-2014**



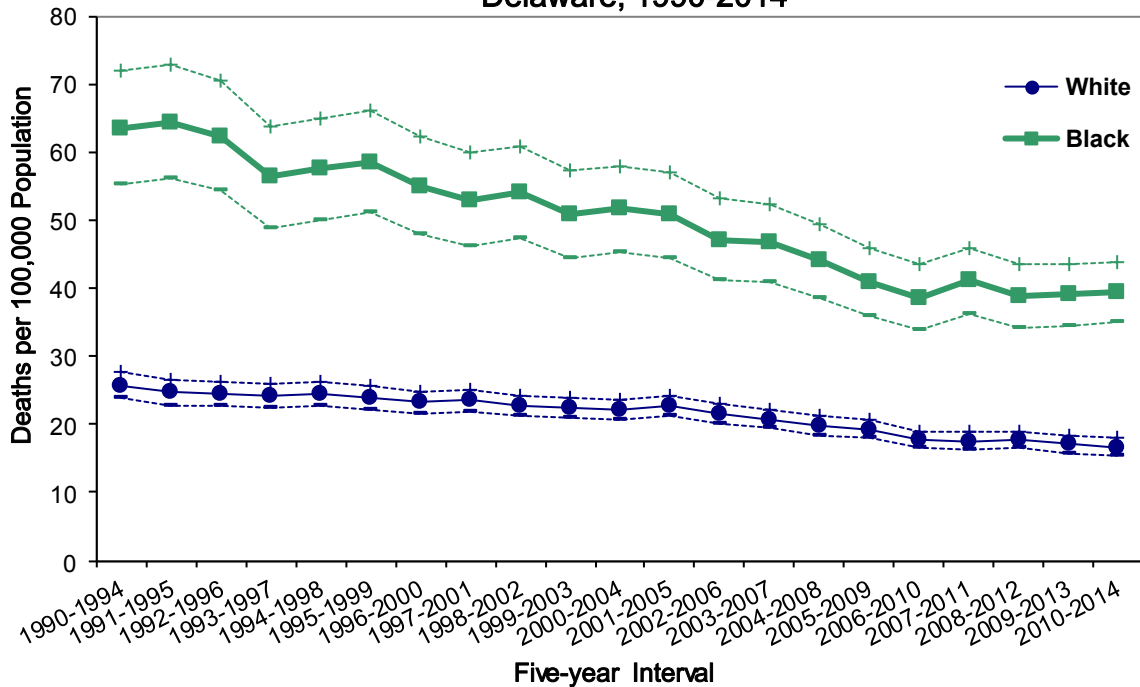
Source: Delaware Health and Social Services, Division of Public Health, Delaware Health Statistics Center



## MORTALITY

Though black mortality rates for diabetes have declined 38 percent since 1990-1994, their rates were more than double that of whites in 2010-2014.

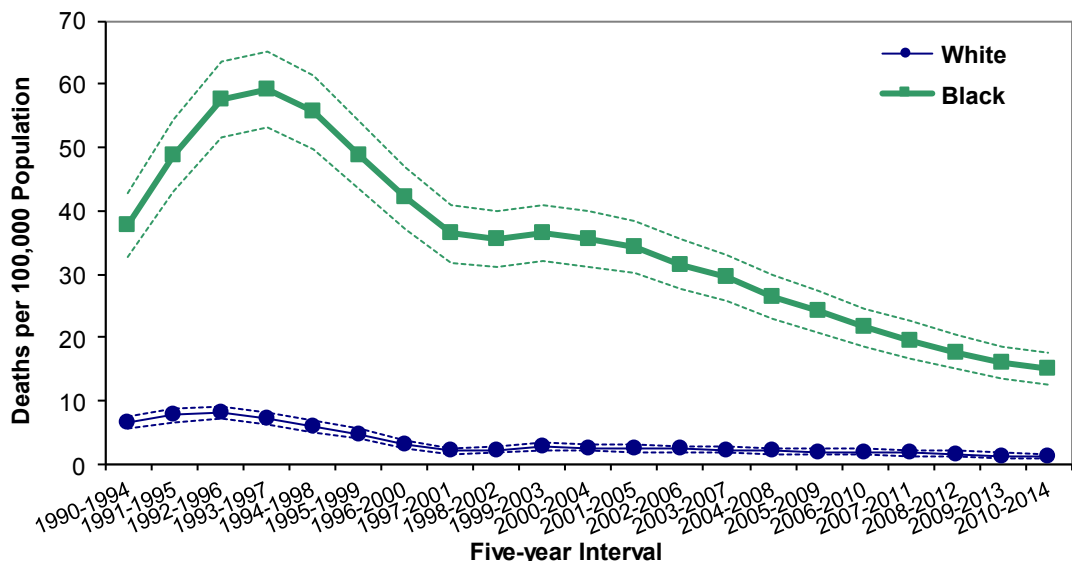
### Five-year Age-Adjusted Diabetes Mortality Rates by Race Delaware, 1990-2014



Source: Delaware Health and Social Services, Division of Public Health, Delaware Health Statistics Center

HIV/AIDS mortality has disproportionately affected Delaware's black population. Despite black HIV/AIDS mortality rates decreasing significantly since the 1993-1997 peak, their 2010-2014 mortality rate of 15.1 deaths per 100,000 was nearly 10 times that of whites. Though they made up only 22 percent of the total Delaware population in 2010-2014, black decedents accounted for 78 percent of all deaths due to HIV/AIDS.

### Five-year Age-Adjusted HIV/AIDS Mortality Rates by Race Delaware, 1990-2014



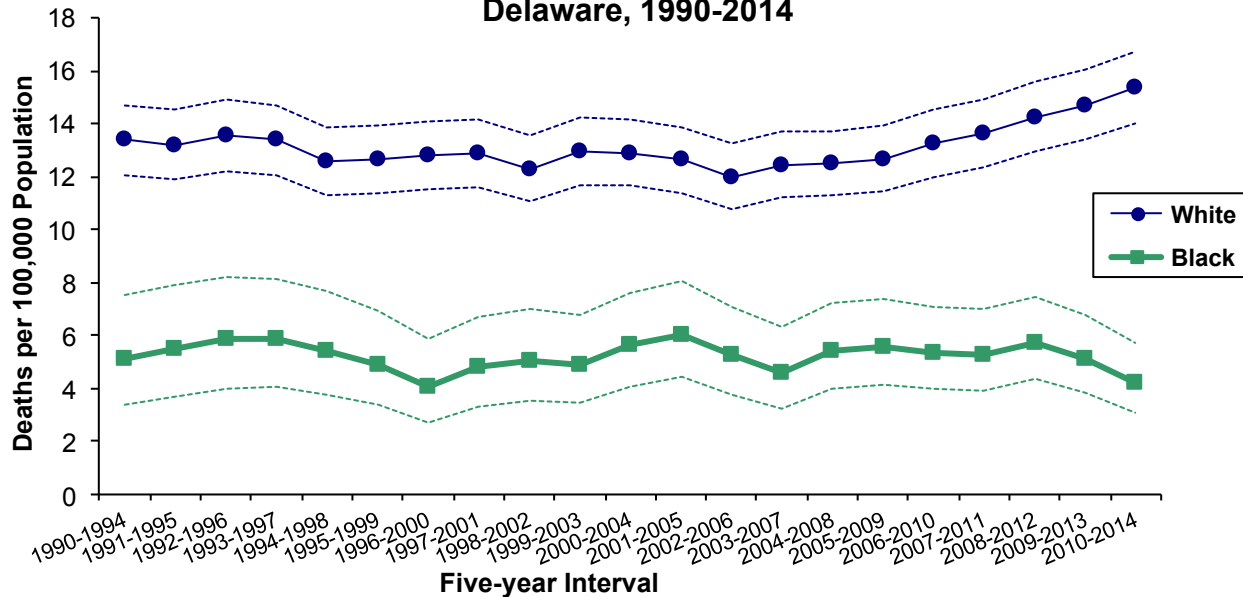
In 2010-2014, HIV was the ninth leading cause of death for black Delawareans; it ranked eighth for black males and twelfth for black females.

Source: Delaware Health and Social Services, Division of Public Health, Delaware Health Statistics Center

## MORTALITY

Suicide mortality trends for white populations increased between 1990-1994 and 2010-2014, with the white rate (15.4) more than triple that of the black rate (4.2). Suicide mortality trends for white populations increased between 1990-1994 and 2010-2014, with the white rate (15.4) more than triple that of the black rate (4.2).

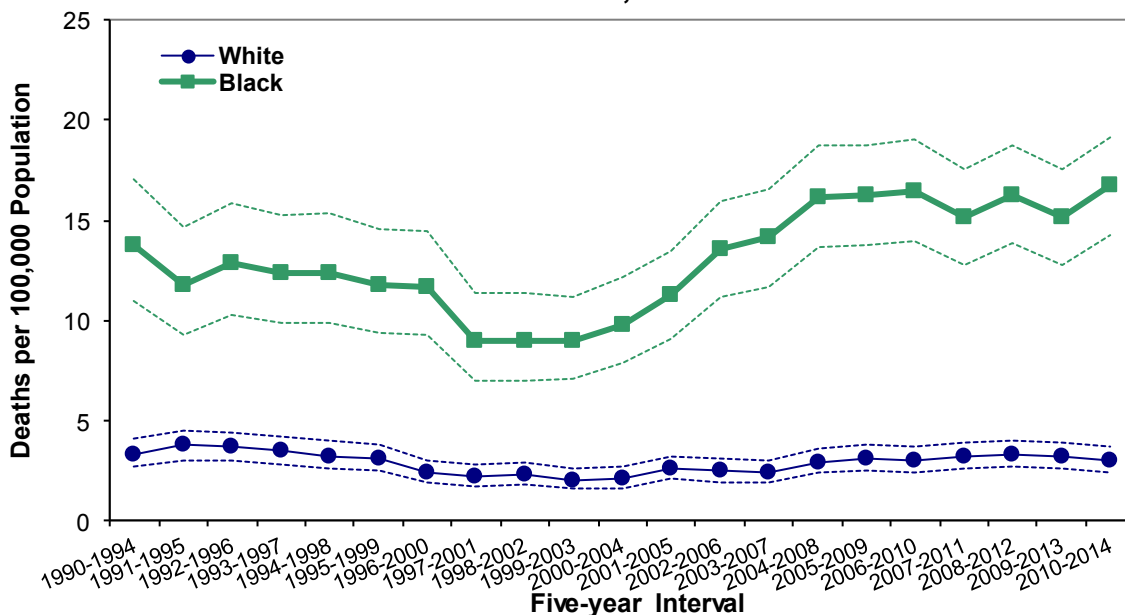
### Five-year Age-Adjusted Suicide Mortality Rates by Race Delaware, 1990-2014



Source: Delaware Health and Social Services, Division of Public Health, Delaware Health Statistics Center

After declining throughout most of the 1990s and reaching their lowest point in 1999-2003, homicide mortality rates have risen 83 percent. In 2010-2014, the black homicide rate increased 88 percent to 16.7 and the white homicide mortality rate increased 50 percent to 3.0 deaths per 100,000 population.

### Five-year Age-Adjusted Homicide Mortality Rates by Race Delaware, 1990-2014

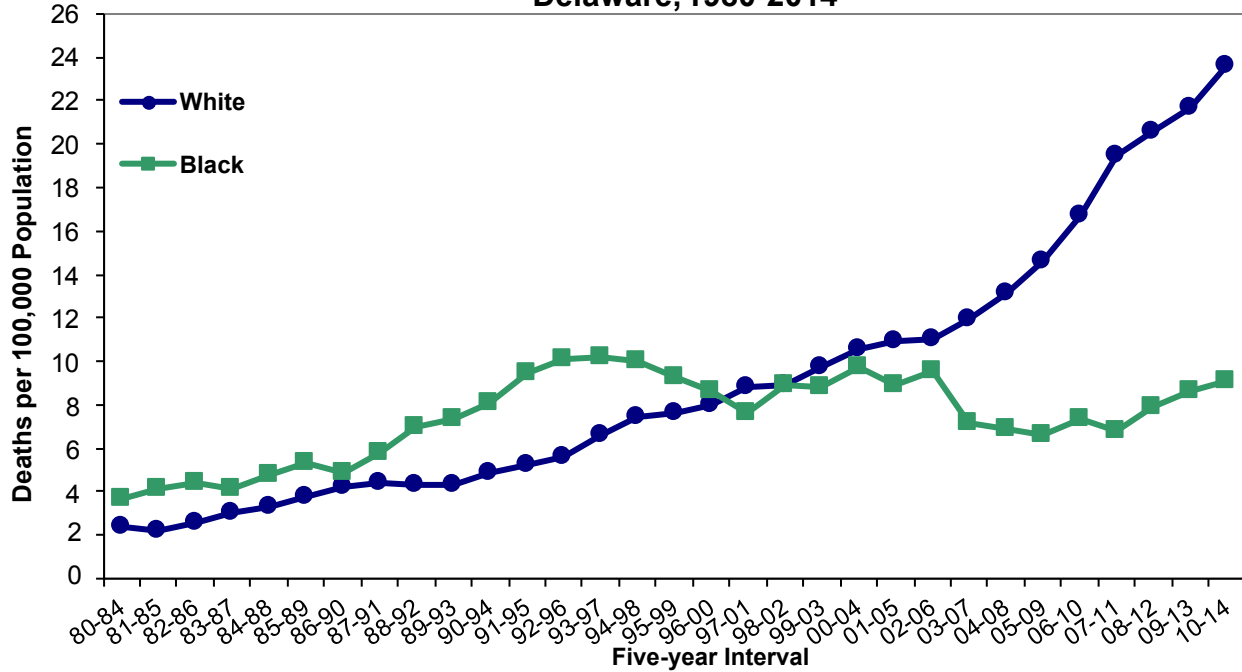


Source: Delaware Health and Social Services, Division of Public Health, Delaware Health Statistics Center

## MORTALITY

Though black mortality rates for drug-induced deaths were historically higher than white rates, in 1994-1998 they began a four-year decline that moved them just below white rates by 1997-2001. Since then, white mortality rates remained higher and continued to rise. By 2010-2014, the white drug-induced mortality rate (23.6 deaths per 100,000 population) was more than twice the black rate (9.1).

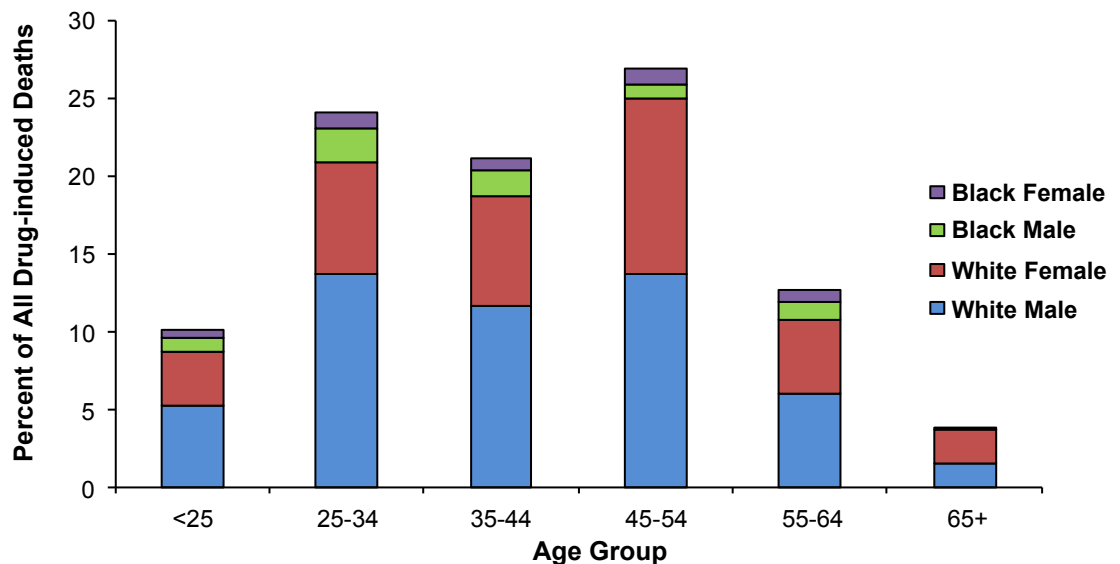
**Five-year Age-adjusted Rates for Drug-Induced Deaths by Race  
Delaware, 1980-2014**



Source: Delaware Health and Social Services, Division of Public Health, Delaware Health Statistics Center

In 2010-2014, 53 percent of all drug-induced deaths were white males. Of all the race-age groups, white males ages 25-34 and 45-54 and white females ages 45-54 were responsible for the largest number of drug-induced deaths. White females ages 45-54 accounted for 11.2 percent of the deaths, whereas white males ages 25-34 and 45-54 accounted for 28 percent of the drug-induced deaths. Black females ages 45-54 and black males ages 25-34 and 45-54 were only 4 percent of the drug-induced deaths.

**Distribution of Drug-induced Deaths by Race, Sex, and Age Group Delaware, 2010-2014**



Source: Delaware Health and Social Services, Division of Public Health, Delaware Health Statistics Center

TABLE F-1  
NUMBER OF DEATHS BY RACE

U.S., DELAWARE, COUNTIES AND CITY OF WILMINGTON, 2001-2014

Area/ Race	2001	2002	2003	2004	2005	2006	2007	2008	2009	2010	2011	2012	2013	2014
<b>U.S.</b>														
All Races	2416425	2443387	2448288	2397615	2448017	2426264	2423712	2471984	2437163	2468435	2515458	2543279	2596993	2626418
White	2079691	2102589	2103714	2056643	2098097	2077549	2074151	2120233	2086355	2114749	2156077	2175178	2217103	2237880
Black	287709	290051	291300	287315	292808	289971	289585	289072	286623	286959	290100	295222	302969	308960
Other	49025	50747	53274	53657	57112	58744	59976	62679	64185	66727	69281	72879	76921	79578
<b>Delaware</b>														
All Races	7114	6860	7067	7124	7424	7144	7246	7602	7498	7667	7816	7873	7967	8252
White	5886	5694	5782	5862	6129	5856	5985	6309	6113	6274	6412	6348	6498	6677
Black	1180	1111	1241	1204	1235	1225	1181	1217	1270	1258	1256	1392	1295	1435
Other	48	55	44	58	60	63	80	76	115	135	148	133	174	140
<b>Kent</b>														
All Races	1102	1113	1114	1154	1250	1219	1255	1367	1379	1345	1368	1462	1422	1524
White	900	916	878	948	1017	967	1018	1133	1096	1080	1092	1159	1128	1196
Black	194	187	224	193	224	234	219	220	263	231	239	273	250	299
Other	8	10	12	13	9	18	18	14	20	34	37	30	44	29
<b>New Castle</b>														
All Races	4234	3996	4129	4146	4229	4039	4101	4290	4100	4221	4394	4260	4338	4334
White	3435	3244	3299	3324	3381	3212	3294	3441	3234	3316	3486	3270	3392	3354
Black	774	718	809	793	809	794	771	802	799	828	820	909	847	901
Other	25	34	21	29	39	33	36	47	67	77	88	81	99	79
Wilmington														
All Races	850	779	843	782	765	728	705	726	692	713	697	691	651	729
White	421	392	413	358	362	337	345	334	329	294	320	297	273	326
Black	425	380	430	419	401	385	359	389	360	406	362	383	364	395
Other	4	7	0	5	2	6	1	3	3	13	15	11	14	8
Balance of NC County														
All Races	3384	3217	3286	3364	3464	3311	3396	3564	3408	3508	3697	3569	3687	3605
White	3014	2852	2886	2966	3019	2875	2949	3107	2905	3022	3166	2973	3119	3028
Black	349	338	379	374	408	409	412	413	439	422	458	526	483	506
Other	21	27	21	24	37	27	35	44	64	64	73	70	85	71
<b>Sussex</b>														
All Races	1778	1751	1824	1824	1945	1886	1890	1945	2019	2101	2054	2151	2207	2394
White	1551	1534	1605	1590	1731	1677	1673	1735	1783	1878	1834	1919	1978	2127
Black	212	206	208	218	202	197	191	195	208	199	197	210	198	235
Other	15	11	11	16	12	12	26	15	28	24	23	22	31	32

NDRACE

**Note:**  
2010 US data are preliminary numbers from NCHS.

**Sources:** Delaware Health and Social Services, Division of Public Health, Delaware Health Statistics Center,  
National Center for Health Statistics

TABLE F-2  
NUMBER OF DEATHS BY AGE, RACE, AND HISPANIC ORIGIN  
DELAWARE, COUNTIES AND CITY OF WILMINGTON, 2014

Area/ Age	Race									Hispanic Origin <sup>2</sup>
	All Races	White	Black	American Indian <sup>1</sup>	Asian or Pacific Islander (API)				All Other	
					Chinese	Japanese	Filipino	Other API		
<b>Delaware</b>	8252	6677	1435	27	17	7	12	52	25	234
<1	74	38	30	0	1	0	0	4	1	12
1-4	12	6	4	0	0	0	0	0	2	3
5-14	10	6	3	0	1	0	0	0	0	1
15-24	88	56	29	0	0	0	0	3	0	9
25-34	159	108	47	1	0	0	0	0	3	13
35-44	216	148	64	1	0	0	0	1	2	15
45-54	536	368	159	3	1	0	1	3	1	17
55-64	1074	810	246	5	1	0	0	8	4	36
65-74	1546	1225	292	6	3	1	4	13	2	41
75+	4537	3912	561	11	10	6	7	20	10	87
Unknown	0	0	0	0	0	0	0	0	0	0
<b>Kent</b>	1524	1196	299	10	3	4	4	5	3	53
<1	13	9	4	0	0	0	0	0	0	1
1-4	3	0	3	0	0	0	0	0	0	0
5-14	2	2	0	0	0	0	0	0	0	0
15-24	16	11	5	0	0	0	0	0	0	1
25-34	40	29	9	1	0	0	0	0	1	3
35-44	54	40	13	0	0	0	0	0	1	4
45-54	118	71	43	2	1	0	0	1	0	3
55-64	224	175	49	0	0	0	0	0	0	7
65-74	303	238	58	2	1	1	1	2	0	13
75+	751	621	115	5	1	3	3	2	1	21
Unknown	0	0	0	0	0	0	0	0	0	0
<b>New Castle</b>	4334	3354	901	3	12	2	6	40	16	151
<1	49	22	21	0	1	0	0	4	1	9
1-4	5	4	1	0	0	0	0	0	0	2
5-14	6	3	2	0	1	0	0	0	0	0
15-24	53	30	20	0	0	0	0	3	0	5
25-34	92	58	32	0	0	0	0	0	2	8
35-44	126	82	42	0	0	0	0	1	1	10
45-54	296	200	93	0	0	0	1	1	1	13
55-64	596	421	163	1	1	0	0	6	4	25
65-74	722	524	183	1	1	0	2	9	2	26
75+	2389	2010	344	1	8	2	3	16	5	53
Unknown	0	0	0	0	0	0	0	0	0	0
Wilmington	729	326	395	0	0	1	0	4	3	48
<1	14	5	8	0	0	0	0	1	0	3
1-4	2	1	1	0	0	0	0	0	0	1
5-14	0	0	0	0	0	0	0	0	0	0
15-24	11	2	9	0	0	0	0	0	0	1
25-34	28	7	20	0	0	0	0	0	1	4
35-44	26	13	13	0	0	0	0	0	0	2
45-54	62	18	44	0	0	0	0	0	0	6
55-64	129	50	79	0	0	0	0	0	0	6
65-74	138	57	79	0	0	0	0	1	1	13
75+	319	173	142	0	0	1	0	2	1	12
Unknown	0	0	0	0	0	0	0	0	0	0
Balance of NC County	3605	3028	506	3	12	1	6	36	13	103
<1	35	17	13	0	1	0	0	3	1	6
1-4	3	3	0	0	0	0	0	0	0	1
5-14	6	3	2	0	1	0	0	0	0	0
15-24	42	28	11	0	0	0	0	3	0	4
25-34	64	51	12	0	0	0	0	0	1	4
35-44	100	69	29	0	0	0	0	1	1	8
45-54	234	182	49	0	0	0	1	1	1	7
55-64	467	371	84	1	1	0	0	6	4	19
65-74	584	467	104	1	1	0	2	8	1	13
75+	2070	1837	202	1	8	1	3	14	4	41
Unknown	0	0	0	0	0	0	0	0	0	0
<b>Sussex</b>	2394	2127	235	14	2	1	2	7	6	30
<1	12	7	5	0	0	0	0	0	0	2
1-4	4	2	0	0	0	0	0	0	2	1
5-14	2	1	1	0	0	0	0	0	0	1
15-24	19	15	4	0	0	0	0	0	0	3
25-34	27	21	6	0	0	0	0	0	0	2
35-44	36	26	9	1	0	0	0	0	0	1
45-54	122	97	23	1	0	0	0	1	0	1
55-64	254	214	34	4	0	0	0	2	0	4
65-74	521	463	51	3	1	0	1	2	0	2
75+	1397	1281	102	5	1	1	1	2	4	13
Unknown	0	0	0	0	0	0	0	0	0	0

DETRACE

**Notes:**

1. Includes any deaths that may have occurred to Aleut and Eskimo Indians.
2. People of Hispanic origin may be of any race. See *Hispanic Origin and Race* in the Technical Notes.

Source: Delaware Health and Social Services, Division of Public Health, Delaware Health Statistics Center

TABLE F-3  
NUMBER OF DEATHS BY AGE AND RACE  
DELAWARE, COUNTIES AND CITY OF WILMINGTON, 2014

**(BOTH SEXES)**

Area/ Race	Age of Decedent													
	Total	< 1	1-4	5-9	10-14	15-19	20-24	25-34	35-44	45-54	55-64	65-74	75+	Unk
<b>Delaware</b>														
All Races	8252	74	12	1	9	28	60	159	216	536	1074	1546	4537	0
White	6677	38	6	0	6	14	42	108	148	368	810	1225	3912	0
Black	1435	30	4	0	3	12	17	47	64	159	246	292	561	0
Other	140	6	2	1	0	2	1	4	4	9	18	29	64	0
<b>Kent</b>														
All Races	1524	13	3	0	2	5	11	40	54	118	224	303	751	0
White	1196	9	0	0	2	3	8	29	40	71	175	238	621	0
Black	299	4	3	0	0	2	3	9	13	43	49	58	115	0
Other	29	0	0	0	0	0	0	2	1	4	0	7	15	0
<b>New Castle</b>														
All Races	4334	49	5	1	5	17	36	92	126	296	596	722	2389	0
White	3354	22	4	0	3	6	24	58	82	200	421	524	2010	0
Black	901	21	1	0	2	9	11	32	42	93	163	183	344	0
Other	79	6	0	1	0	2	1	2	2	3	12	15	35	0
<b>Wilmington</b>														
All Races	729	14	2	0	0	5	6	28	26	62	129	138	319	0
White	326	5	1	0	0	0	2	7	13	18	50	57	173	0
Black	395	8	1	0	0	5	4	20	13	44	79	79	142	0
Other	8	1	0	0	0	0	0	1	0	0	0	2	4	0
<b>Balance of NC County</b>														
All Races	3605	35	3	1	5	12	30	64	100	234	467	584	2070	0
White	3028	17	3	0	3	6	22	51	69	182	371	467	1837	0
Black	506	13	0	0	2	4	7	12	29	49	84	104	202	0
Other	71	5	0	1	0	2	1	1	2	3	12	13	31	0
<b>Sussex</b>														
All Races	2394	12	4	0	2	6	13	27	36	122	254	521	1397	0
White	2127	7	2	0	1	5	10	21	26	97	214	463	1281	0
Black	235	5	0	0	1	1	3	6	9	23	34	51	102	0
Other	32	0	2	0	0	0	0	0	1	2	6	7	14	0

Source: Delaware Health and Social Services, Division of Public Health, Delaware Health Statistics Center

NDAGERAC



TABLE F-4  
NUMBER OF DEATHS BY AGE AND RACE  
DELAWARE, COUNTIES AND CITY OF WILMINGTON, 2014

(MALES)

Area/ Race	Age of Decedent													
	Total	< 1	1-4	5-9	10-14	15-19	20-24	25-34	35-44	45-54	55-64	65-74	75+	Unk
<b>Delaware</b>														
All Races	4190	34	5	0	6	19	45	112	133	321	609	870	2036	0
White	3399	19	2	0	5	7	30	74	98	230	471	691	1772	0
Black	718	13	2	0	1	11	14	35	32	88	126	166	230	0
Other	73	2	1	0	0	1	1	3	3	3	12	13	34	0
<b>Kent</b>														
All Races	794	5	2	0	1	3	8	29	29	74	128	159	356	0
White	622	4	0	0	1	1	5	20	23	47	101	119	301	0
Black	162	1	2	0	0	2	3	7	6	26	27	38	50	0
Other	10	0	0	0	0	0	0	2	0	1	0	2	5	0
<b>New Castle</b>														
All Races	2147	21	1	0	4	12	27	63	82	166	331	394	1046	0
White	1671	11	1	0	3	3	17	39	59	116	243	288	891	0
Black	433	8	0	0	1	8	9	23	21	49	81	99	134	0
Other	43	2	0	0	0	1	1	1	2	1	7	7	21	0
<b>Wilmington</b>														
All Races	355	7	0	0	0	5	6	20	16	34	76	74	117	0
White	166	4	0	0	0	0	2	5	8	9	37	37	64	0
Black	185	3	0	0	0	5	4	15	8	25	39	35	51	0
Other	4	0	0	0	0	0	0	0	0	0	0	2	2	0
<b>Balance of NC County</b>														
All Races	1792	14	1	0	4	7	21	43	66	132	255	320	929	0
White	1505	7	1	0	3	3	15	34	51	107	206	251	827	0
Black	248	5	0	0	1	3	5	8	13	24	42	64	83	0
Other	39	2	0	0	0	1	1	1	2	1	7	5	19	0
<b>Sussex</b>														
All Races	1249	8	2	0	1	4	10	20	22	81	150	317	634	0
White	1106	4	1	0	1	3	8	15	16	67	127	284	580	0
Black	123	4	0	0	0	1	2	5	5	13	18	29	46	0
Other	20	0	1	0	0	0	0	0	1	1	5	4	8	0

Source: Delaware Health and Social Services, Division of Public Health, Delaware Health Statistics Center

NDRCAGML

TABLE F-5  
NUMBER OF DEATHS BY AGE AND RACE  
DELAWARE, COUNTIES AND CITY OF WILMINGTON, 2014

**(FEMALES)**

Area/ Race	Age of Decedent													
	Total	< 1	1-4	5-9	10-14	15-19	20-24	25-34	35-44	45-54	55-64	65-74	75+	Unk
<b>Delaware</b>														
All Races	4062	40	7	1	3	9	15	47	83	215	465	676	2501	0
White	3278	19	4	0	1	7	12	34	50	138	339	534	2140	0
Black	717	17	2	0	2	1	3	12	32	71	120	126	331	0
Other	67	4	1	1	0	1	0	1	1	6	6	16	30	0
<b>Kent</b>														
All Races	730	8	1	0	1	2	3	11	25	44	96	144	395	0
White	574	5	0	0	1	2	3	9	17	24	74	119	320	0
Black	137	3	1	0	0	0	0	2	7	17	22	20	65	0
Other	19	0	0	0	0	0	0	0	1	3	0	5	10	0
<b>New Castle</b>														
All Races	2187	28	4	1	1	5	9	29	44	130	265	328	1343	0
White	1683	11	3	0	0	3	7	19	23	84	178	236	1119	0
Black	468	13	1	0	1	1	2	9	21	44	82	84	210	0
Other	36	4	0	1	0	1	0	1	0	2	5	8	14	0
<b>Wilmington</b>														
All Races	374	7	2	0	0	0	0	8	10	28	53	64	202	0
White	160	1	1	0	0	0	0	2	5	9	13	20	109	0
Black	210	5	1	0	0	0	0	5	5	19	40	44	91	0
Other	4	1	0	0	0	0	0	1	0	0	0	0	2	0
<b>Balance of NC County</b>														
All Races	1813	21	2	1	1	5	9	21	34	102	212	264	1141	0
White	1523	10	2	0	0	3	7	17	18	75	165	216	1010	0
Black	258	8	0	0	1	1	2	4	16	25	42	40	119	0
Other	32	3	0	1	0	1	0	0	0	2	5	8	12	0
<b>Sussex</b>														
All Races	1145	4	2	0	1	2	3	7	14	41	104	204	763	0
White	1021	3	1	0	0	2	2	6	10	30	87	179	701	0
Black	112	1	0	0	1	0	1	1	4	10	16	22	56	0
Other	12	0	1	0	0	0	0	0	0	1	1	3	6	0

Source: Delaware Health and Social Services, Division of Public Health, Delaware Health Statistics Center

NDRCAGFE

TABLE F-6  
MORTALITY TRENDS BY RACE, ETHNICITY, GENDER, AND AGE  
DELAWARE, 2004-2014

CHARACTERISTIC	Year											
	2004	2005	2006	2007	2008	2009	2010	2011	2012	2013	2014	
<b>Resident Deaths</b>												
Number	7124	7424	7144	7246	7602	7498	7667	7816	7873	7967	8252	
Crude Rate	857.5	878.4	831.4	831.2	860.1	840.8	852.1	861.7	860.8	862.5	884.3	
AADR <sup>2</sup>	814.5	818.1	762.7	748.3	760.5	730.8	727.8	726.4	709.7	696.6	703.3	
<b>Decedent's Race/Ethnicity</b>												
White	Number	5862	6129	5856	5985	6309	6113	6274	6412	6348	6498	6677
	Percent	82.3%	82.6%	82.0%	82.6%	83.0%	81.5%	81.8%	82.0%	80.6%	81.6%	80.9%
	AADR <sup>2</sup>	788.1	794.6	741.0	734.8	753.4	713.6	718.2	721.8	695.3	692.4	693.7
Black	Number	1204	1235	1225	1181	1217	1270	1258	1256	1392	1295	1435
	Percent	16.9%	16.6%	17.1%	16.3%	16.0%	16.9%	16.4%	16.1%	17.7%	16.3%	17.4%
	AADR <sup>2</sup>	1046.7	1024.3	943.9	889.2	860.7	866.5	834.4	795.7	858.5	769.4	843.9
Hispanic <sup>1</sup>	Number	121	121	126	178	189	164	142	144	148	200	234
	Percent	1.7%	1.6%	1.8%	2.5%	2.5%	2.2%	1.9%	1.8%	1.9%	2.5%	2.8%
	AADR <sup>2</sup>	730.0	624.5	485.8	775.5	789.6	691.0	550.0	536.1	504.9	706.3	824.4
<b>Decedent's Gender</b>												
Female	Number	3517	3746	3590	3614	3850	3782	3802	3946	4015	3936	4062
	Percent	49.4%	50.5%	50.3%	49.9%	50.6%	50.4%	49.6%	50.5%	51.0%	49.4%	49.2%
	AADR <sup>2</sup>	679.7	651.9	647.3	630.3	651.9	624.0	610.8	625.0	613.9	588.0	591.9
Male	Number	3607	3678	3554	3632	3752	3716	3865	3870	3858	4031	4190
	Percent	50.6%	49.5%	49.7%	50.1%	49.4%	49.6%	50.4%	49.5%	49.0%	50.6%	50.8%
	AADR <sup>2</sup>	996.9	894.3	905.9	893.5	894.3	860.2	869.9	849.7	826.0	830.3	842.0
<b>Decedent's age</b>												
<1	Number	97	106	99	91	101	91	88	98	84	68	74
	Percent	1.4%	1.4%	1.4%	1.3%	1.3%	1.2%	1.1%	1.3%	1.1%	0.9%	0.9%
1-14	Number	44	26	20	15	23	27	18	28	30	29	22
	Percent	0.6%	0.4%	0.3%	0.2%	0.3%	0.4%	0.2%	0.4%	0.4%	0.4%	0.3%
15-24	Number	97	78	92	88	91	92	97	86	89	82	88
	Percent	1.4%	1.1%	1.3%	1.2%	1.2%	1.2%	1.3%	1.1%	1.1%	1.0%	1.1%
25-44	Number	387	375	427	385	400	359	362	356	388	359	375
	Percent	5.4%	5.1%	6.0%	5.3%	5.3%	4.8%	4.7%	4.6%	4.9%	4.5%	4.5%
45-64	Number	1338	1406	1410	1418	1552	1529	1578	1579	1620	1739	1610
	Percent	18.8%	18.9%	19.7%	19.6%	20.4%	20.4%	20.6%	20.2%	20.6%	21.8%	19.5%
65-74	Number	1310	1272	1232	1238	1276	1313	1307	1357	1325	1385	1546
	Percent	18.4%	17.1%	17.2%	17.1%	16.8%	17.5%	17.0%	17.4%	16.8%	17.4%	18.7%
75-84	Number	2039	2160	1960	2022	2043	1944	1976	2077	1897	1931	2048
	Percent	28.6%	29.1%	27.4%	27.9%	26.9%	25.9%	25.8%	26.6%	24.1%	24.2%	24.8%
85+	Number	1812	2001	1904	1985	2116	2143	2241	2235	2440	2374	2489
	Percent	25.4%	27.0%	26.7%	27.4%	27.8%	28.6%	29.2%	28.6%	31.0%	29.8%	30.2%

**Notes:**

1. Because of the small numbers of Hispanic deaths and the resulting variability in annual mortality rates, Hispanic mortality rates should be interpreted with caution.
2. Age-Adjusted Death Rate per 100,000, adjusted to 2000 U.S. Standard Population.
3. Figures for decedent's age may not equal total number of annual deaths due to deaths of unknown age.

MORTREND

**Sources:** Delaware Health and Social Services, Division of Public Health, Delaware Health Statistics Center

TABLE F-7  
 NUMBER OF DEATHS AND MEDIAN AGE AT DEATH BY SEX  
 FOR TWENTY LEADING CAUSES, ALCOHOL-INDUCED DEATHS, AND DRUG-INDUCED DEATHS

DELAWARE, 2014

Cause of Death <sup>1</sup>	Deaths		Median Age at Death	
	Number	Percent	Male	Female
<b>All causes</b>	8,252	100.0	74	80
<b>Malignant neoplasms</b>	1,972	23.9	72	72
<b>Diseases of heart</b>	1,917	23.2	77	84
<b>Dementia</b>	464	5.6	87	89
<b>Chronic lower respiratory diseases</b>	458	5.6	79	80
<b>Cerebrovascular diseases</b>	439	5.3	81	84
<b>Accidents (unintentional injuries)</b>	436	5.3	47	53
<b>Diabetes mellitus</b>	226	2.7	69	74
<b>Alzheimer's disease</b>	188	2.3	86	90
<b>Nephritis, nephrotic syndrome &amp; nephrosis</b>	172	2.1	79	78
<b>Influenza &amp; pneumonia</b>	156	1.9	81	85
<b>Septicemia</b>	136	1.6	75	80
<b>Intentional self-harm (suicide)</b>	126	1.5	49	44
<b>Other diseases of respiratory system</b>	115	1.4	77	82
<b>Chronic liver disease &amp; cirrhosis</b>	110	1.3	62	64
<b>Other diseases of circulatory system</b>	83	1.0	74	83
<b>Parkinson's disease</b>	82	1.0	83	83
<b>Certain conditions originating in the perinatal period</b>	65	0.8	72	91
<b>Pneumonitis due to solids &amp; liquids</b>	59	0.7	87	87
<b>Assault (homicide)</b>	57	0.7	29	31
<b>Essential (primary) hypertension &amp; hypertensive renal disease</b>	48	0.6	74	86
<b>Alcohol-induced deaths<sup>2</sup></b>	77	0.9	59	55
<b>Drug-induced deaths<sup>2</sup></b>	204	2.5	41	44

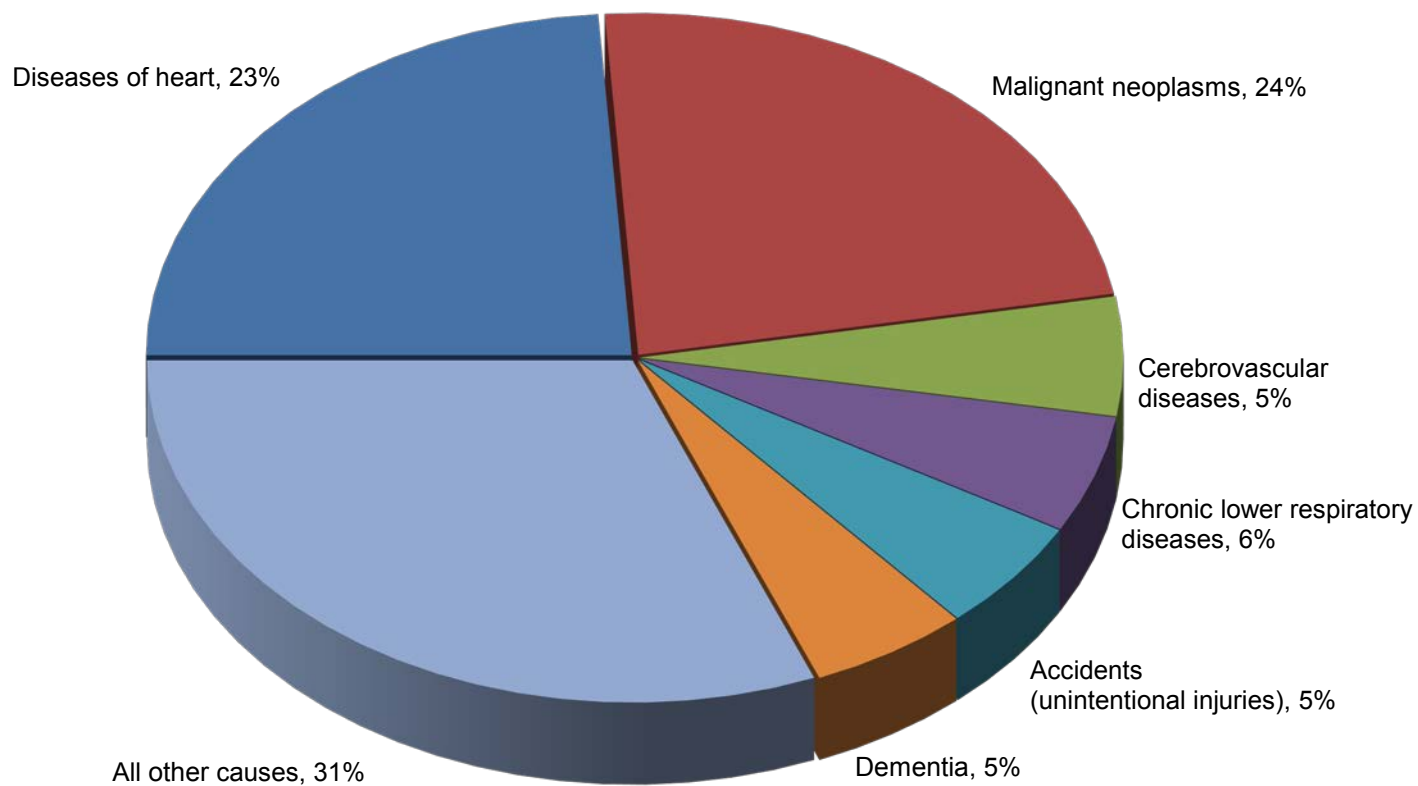
LCODARBS

**Notes:**

1. Classified according to ICD-10 Codes, Tenth Revision. See Appendix E for listing of ICD-10 Codes.
2. Included in selected categories.

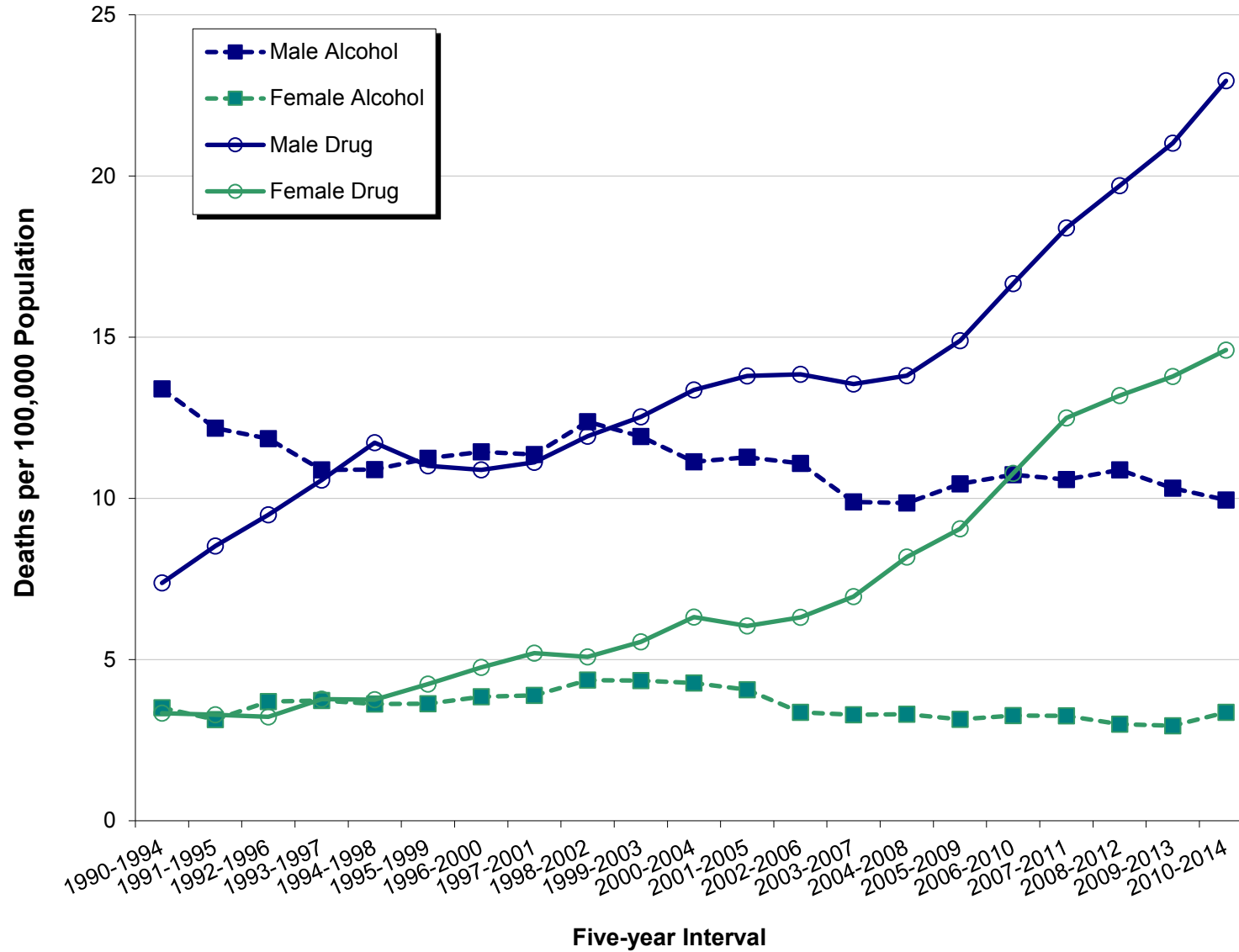
**Source:** Delaware Health and Social Services, Division of Public Health, Delaware Health Statistics Center

**Figure F-1**  
**Leading Causes of Death**  
**Delaware, 2014**



Source: Delaware Health and Social Services, Division of Public Health, Delaware Health Statistics Center

**Figure F-2**  
**Five-year Age-adjusted Drug- and Alcohol-Induced Mortality Rates by Sex**  
**Delaware, 1990-2014**



Source: Delaware Health and Social Services, Division of Public Health, Delaware Health Statistics Center



TABLE F-8  
LEADING CAUSES OF DEATH  
COUNTIES AND CITY OF WILMINGTON, 2010-2014

**Kent**

Cause of Death*	Deaths	
	#	%
Malignant neoplasms	1769	24.8
Diseases of heart	1729	24.3
Chronic lower respiratory diseases	423	5.9
Accidents (unintentional injuries)	358	5.0
Cerebrovascular diseases	328	4.6
Diabetes mellitus	191	2.7
Alzheimer's disease	172	2.4
Septicemia	155	2.2
Nephritis, nephrotic syndrome & nephrosis	138	1.9
Influenza & pneumonia	126	1.8
Intentional self-harm (suicide)	115	1.6
Chronic liver disease & cirrhosis	79	1.1
Essential (primary) hypertension & hypertensive renal disease	66	0.9
In situ neoplasms, benign neoplasms & neoplasms of uncertain behavior	54	0.8
Parkinson's disease	46	0.6
Assault (homicide)	39	0.5
All other causes	1333	18.7
<b>Total</b>	<b>7121</b>	<b>100.0</b>

**New Castle**

Cause of Death*	Deaths	
	#	%
Malignant neoplasms	5128	23.8
Diseases of heart	4636	21.5
Cerebrovascular diseases	1262	5.9
Chronic lower respiratory diseases	1158	5.4
Accidents (unintentional injuries)	1058	4.9
Diabetes mellitus	623	2.9
Alzheimer's disease	508	2.4
Nephritis, nephrotic syndrome & nephrosis	466	2.2
Influenza & pneumonia	402	1.9
Septicemia	331	1.5
Intentional self-harm (suicide)	326	1.5
Chronic liver disease & cirrhosis	217	1.0
Assault (homicide)	216	1.0
Parkinson's disease	216	1.0
Certain conditions originating in the perinatal period	177	0.8
Human immunodeficiency virus (HIV) disease	137	0.6
All other causes	4686	21.7
<b>Total</b>	<b>21547</b>	<b>100.0</b>

**City of Wilmington**

Cause of Death*	Deaths	
	#	%
Diseases of heart	743	21.3
Malignant neoplasms	715	20.5
Cerebrovascular diseases	204	5.9
Accidents (unintentional injuries)	176	5.1
Chronic lower respiratory diseases	167	4.8
Diabetes mellitus	138	4.0
Assault (homicide)	100	2.9
Nephritis, nephrotic syndrome & nephrosis	88	2.5
Human immunodeficiency virus (HIV) disease	88	2.5
Alzheimer's disease	69	2.0
Certain conditions originating in the perinatal period	52	1.5
Septicemia	50	1.4
Influenza & pneumonia	49	1.4
Chronic liver disease & cirrhosis	45	1.3
Essential (primary) hypertension & hypertensive renal disease	37	1.1
Intentional self-harm (suicide)	36	1.0
All other causes	724	20.8
<b>Total</b>	<b>3481</b>	<b>100.0</b>

**Sussex**

Cause of Death*	Deaths	
	#	%
Diseases of heart	2759	25.3
Malignant neoplasms	2705	24.8
Chronic lower respiratory diseases	682	6.3
Cerebrovascular diseases	488	4.5
Accidents (unintentional injuries)	487	4.5
Alzheimer's disease	334	3.1
Diabetes mellitus	292	2.7
Nephritis, nephrotic syndrome & nephrosis	203	1.9
Influenza & pneumonia	167	1.5
Chronic liver disease & cirrhosis	155	1.4
Septicemia	153	1.4
Intentional self-harm (suicide)	143	1.3
Parkinson's disease	110	1.0
Pneumonitis due to solids & liquids	76	0.7
Essential (primary) hypertension & hypertensive renal disease	74	0.7
In situ neoplasms, benign neoplasms & neoplasms of uncertain behavior	69	0.6
All other causes	2010	18.4
<b>Total</b>	<b>10907</b>	<b>100.0</b>

**Note:**

\*Cause of death categories were derived using the NCHS list of 50 rankable causes of death as specified by NCHS. For specific codes, see Appendix E.

**Source:** Delaware Health and Social Services, Division of Public Health, Delaware Health Statistics Center

LCODCTWL

TABLE F-9  
TEN LEADING CAUSES OF DEATH BY SEX AND RACE GROUP  
DELAWARE, 2010-2014

All Races, Male

Cause of Death*	Deaths	
	#	%
Malignant neoplasms	4984	25.2
Diseases of heart	4769	24.1
Accidents (unintentional injuries)	1196	6.0
Chronic lower respiratory diseases	970	4.9
Cerebrovascular diseases	875	4.4
Diabetes mellitus	582	2.9
Intentional self-harm (suicide)	458	2.3
Nephritis, nephrotic syndrome & nephrosis	396	2.0
Influenza & pneumonia	318	1.6
Chronic liver disease & cirrhosis	305	1.5
All other causes	4961	25.0
<b>Total</b>	<b>19814</b>	<b>100.0</b>

All Races, Female

Cause of Death*	Deaths	
	#	%
Malignant neoplasms	4618	23.4
Diseases of heart	4355	22.0
Chronic lower respiratory diseases	1293	6.5
Cerebrovascular diseases	1203	6.1
Alzheimer's disease	714	3.6
Accidents (unintentional injuries)	707	3.6
Diabetes mellitus	524	2.7
Nephritis, nephrotic syndrome & nephrosis	411	2.1
Influenza & pneumonia	377	1.9
Septicemia	334	1.7
All other causes	5225	26.4
<b>Total</b>	<b>19761</b>	<b>100.0</b>

White, Both Sexes

Cause of Death*	Deaths	
	#	%
Malignant neoplasms	7816	24.3
Diseases of heart	7534	23.4
Chronic lower respiratory diseases	2005	6.2
Cerebrovascular diseases	1676	5.2
Accidents (unintentional injuries)	1594	4.9
Alzheimer's disease	869	2.7
Diabetes mellitus	762	2.4
Nephritis, nephrotic syndrome & nephrosis	585	1.8
Influenza & pneumonia	584	1.8
Intentional self-harm (suicide)	526	1.6
All other causes	8258	25.6
<b>Total</b>	<b>32209</b>	<b>100.0</b>

Black, Both Sexes

Cause of Death*	Deaths	
	#	%
Malignant neoplasms	1603	24.2
Diseases of heart	1446	21.8
Cerebrovascular diseases	354	5.3
Diabetes mellitus	315	4.7
Accidents (unintentional injuries)	263	4.0
Chronic lower respiratory diseases	239	3.6
Nephritis, nephrotic syndrome & nephrosis	207	3.1
Assault (homicide)	179	2.7
Human immunodeficiency virus (HIV) disease	149	2.2
Alzheimer's disease	129	1.9
All other causes	1752	26.4
<b>Total</b>	<b>6636</b>	<b>100.0</b>

LCODMFWB

Hispanic, Both Sexes

Cause of Death*	Deaths	
	#	%
Malignant neoplasms	171	19.7
Diseases of heart	151	17.4
Accidents (unintentional injuries)	88	10.1
Cerebrovascular diseases	49	5.6
Certain conditions originating in the perinatal period	33	3.8
Diabetes mellitus	33	3.8
Chronic lower respiratory diseases	29	3.3
Assault (homicide)	22	2.5
Alzheimer's disease	22	2.5
Intentional self-harm (suicide)	20	2.3
All other causes	250	28.8
<b>Total</b>	<b>868</b>	<b>100.0</b>

Notes:

1. Cause of death categories were derived using the NCHS list of 50 rankable causes of death as specified by NCHS. For specific codes, see Appendix E.
2. There was a three-way tie for the tenth most common cause of Hispanic death; Alzheimer's disease also accounted for 19 deaths.

Source: Delaware Health and Social Services, Division of Public Health, Delaware Health Statistics Center

TABLE F-10  
TEN LEADING CAUSES OF DEATH BY RACE-SEX GROUP  
DELAWARE, 2010-2014

White Male

Cause of Death*	Deaths	
	#	%
Malignant neoplasms	4084	25.5
Diseases of heart	3968	24.7
Accidents (unintentional injuries)	988	6.2
Chronic lower respiratory diseases	843	5.3
Cerebrovascular diseases	683	4.3
Diabetes mellitus	416	2.6
Intentional self-harm (suicide)	410	2.6
Nephritis, nephrotic syndrome & nephrosis	285	1.8
Influenza & pneumonia	269	1.7
Alzheimer's disease	262	1.6
All other causes	3837	23.9
<b>Total</b>	<b>16045</b>	<b>100.0</b>

White Females

Cause of Death*	Deaths	
	#	%
Malignant neoplasms	3732	23.1
Diseases of heart	3566	22.1
Chronic lower respiratory diseases	1162	7.2
Cerebrovascular diseases	993	6.1
Alzheimer's disease	607	3.8
Accidents (unintentional injuries)	606	3.7
Diabetes mellitus	346	2.1
Influenza & pneumonia	315	1.9
Nephritis, nephrotic syndrome & nephrosis	300	1.9
Septicemia	259	1.6
All other causes	4278	26.5
<b>Total</b>	<b>16164</b>	<b>100.0</b>

Black Males

Cause of Death*	Deaths	
	#	%
Malignant neoplasms	803	23.8
Diseases of heart	723	21.4
Accidents (unintentional injuries)	181	5.4
Cerebrovascular diseases	168	5.0
Assault (homicide)	161	4.8
Diabetes mellitus	151	4.5
Chronic lower respiratory diseases	114	3.4
Human immunodeficiency virus (HIV) disease	103	3.0
Nephritis, nephrotic syndrome & nephrosis	100	3.0
Certain conditions originating in the perinatal period	71	2.1
All other causes	805	23.8
<b>Total</b>	<b>3380</b>	<b>100.0</b>

Black Females

Cause of Death*	Deaths	
	#	%
Malignant neoplasms	800	24.6
Diseases of heart	723	22.2
Cerebrovascular diseases	186	5.7
Diabetes mellitus	164	5.0
Chronic lower respiratory diseases	125	3.8
Nephritis, nephrotic syndrome & nephrosis	107	3.3
Alzheimer's disease	96	2.9
Accidents (unintentional injuries)	82	2.5
Septicemia	67	2.1
Influenza & pneumonia	56	1.7
All other causes	850	26.1
<b>Total</b>	<b>3256</b>	<b>100.0</b>

Hispanic Males

Cause of Death*	Deaths	
	#	%
Malignant neoplasms	100	18.9
Diseases of heart	95	18.0
Accidents (unintentional injuries)	65	12.3
Cerebrovascular diseases	26	4.9
Diabetes mellitus	22	4.2
Certain conditions originating in the perinatal period	21	4.0
Chronic lower respiratory diseases	19	3.6
Assault (homicide)	18	3.4
Intentional self-harm (suicide)	14	2.7
Chronic liver disease & cirrhosis	11	2.1
All other causes	137	25.9
<b>Total</b>	<b>528</b>	<b>100.0</b>

Hispanic Females

Cause of Death*	Deaths	
	#	%
Malignant neoplasms	71	20.9
Diseases of heart	56	16.5
Accidents (unintentional injuries)	23	6.8
Cerebrovascular diseases	23	6.8
Alzheimer's disease	18	5.3
Certain conditions originating in the perinatal period	12	3.5
Diabetes mellitus	11	3.2
Chronic lower respiratory diseases	10	2.9
chromosomal abnormalities	7	2.1
Nephritis, nephrotic syndrome & nephrosis	7	2.1
All other causes	102	30.0
<b>Total</b>	<b>340</b>	<b>100.0</b>

Note: \*Cause of death categories were derived using the NCHS list of 50 rankable causes of death as specified by NCHS. For specific codes, see Appendix E.

LCODRCSX

Source: Delaware Health and Social Services, Division of Public Health, Delaware Health Statistics Center

TABLE F-11  
TEN LEADING CAUSES OF DEATH BY AGE  
DELAWARE, 2010-2014

1-4 Years

Cause of Death*	Deaths	
	Number	Percent
Accidents (unintentional injuries)	11	78.6
Assault (homicide)	7	50.0
chromosomal abnormalities	6	42.9
Malignant neoplasms	6	42.9
Chronic lower respiratory diseases	2	14.3
Diseases of heart	2	14.3
Complications of medical & surgical care	1	7.1
Nephritis, nephrotic syndrome & nephrosis	1	7.1
Pneumonitis due to solids & liquids	1	7.1
Influenza & pneumonia	1	7.1
Other	14	100.0
<b>Total</b>	<b>52</b>	

5-14 Years

Cause of Death*	Deaths	
	Number	Percent
Accidents (unintentional injuries)	21	28.0
Malignant neoplasms	10	13.3
chromosomal abnormalities	6	8.0
Intentional self-harm (suicide)	4	5.3
Diseases of heart	4	5.3
Chronic lower respiratory diseases	3	4.0
Assault (homicide)	2	2.7
Complications of medical & surgical care	1	1.3
Certain conditions originating in the perinatal period	1	1.3
Pneumonitis due to solids & liquids	1	1.3
All other causes	22	29.3
<b>Total</b>	<b>75</b>	<b>100.0</b>

15-24 Years

Cause of Death*	Deaths	
	Number	Percent
Accidents (unintentional injuries)	180	40.7
Assault (homicide)	78	17.6
Intentional self-harm (suicide)	72	16.3
Malignant neoplasms	20	4.5
Diseases of heart	18	4.1
Complications of medical & surgical care	4	0.9
Congenital malformations, deformations, & chromosomal abnormalities	4	0.9
Chronic lower respiratory diseases	4	0.9
Septicemia	3	0.7
Nephritis, nephrotic syndrome & nephrosis	2	0.5
All other causes	57	12.9
<b>Total</b>	<b>442</b>	<b>100.0</b>

25-44 Years

Cause of Death*	Deaths	
	Number	Percent
Accidents (unintentional injuries)	564	30.7
Diseases of heart	247	13.4
Malignant neoplasms	217	11.8
Intentional self-harm (suicide)	175	9.5
Assault (homicide)	116	6.3
Diabetes mellitus	47	2.6
Human immunodeficiency virus (HIV) disease	37	2.0
Cerebrovascular diseases	34	1.8
Chronic liver disease & cirrhosis	24	1.3
Septicemia	20	1.1
All other causes	359	19.5
<b>Total</b>	<b>1840</b>	<b>100.0</b>

45-64 Years

Cause of Death*	Deaths	
	Number	Percent
Malignant neoplasms	2696	33.2
Diseases of heart	1611	19.8
Accidents (unintentional injuries)	549	6.8
Diabetes mellitus	311	3.8
Chronic lower respiratory diseases	287	3.5
Cerebrovascular diseases	258	3.2
Chronic liver disease & cirrhosis	250	3.1
Intentional self-harm (suicide)	245	3.0
Nephritis, nephrotic syndrome & nephrosis	149	1.8
Septicemia	144	1.8
All other causes	1626	20.0
<b>Total</b>	<b>8126</b>	<b>100.0</b>

65+ Years

Cause of Death*	Deaths	
	Number	Percent
Diseases of heart	7236	25.3
Malignant neoplasms	6653	23.2
Chronic lower respiratory diseases	1949	6.8
Cerebrovascular diseases	1779	6.2
Alzheimer's disease	1003	3.5
Diabetes mellitus	746	2.6
Nephritis, nephrotic syndrome & nephrosis	643	2.2
Influenza & pneumonia	597	2.1
Accidents (unintentional injuries)	570	2.0
Septicemia	469	1.6
All other causes	6983	24.4
<b>Total</b>	<b>28628</b>	<b>100.0</b>

Note:\*Cause of death categories were derived using the NCHS list of 50 rankable causes of death as specified by NCHS. For specific codes, see Appendix E.

Source: Delaware Health and Social Services, Division of Public Health, Delaware Health Statistics Center

LCODAGE

TABLE F-12  
NUMBER OF DEATHS BY AGE FOR SELECTED LEADING CAUSES OF DEATH  
DELAWARE, 2014  
**(ALL RACES, BOTH SEXES)**

Cause of Death*	Age of Decedent													
	Total	< 1	1-4	5-9	10-14	15-19	20-24	25-34	35-44	45-54	55-64	65-74	75+	Unk
<b>Diseases of the heart (I00-I09, I11, I13, I20-I51)</b>	1917	1	1	0	2	2	3	11	33	106	210	332	1216	0
Acute rheumatic fever and chronic rheumatic heart disease (I00-I09)	7	0	0	0	0	0	0	0	0	1	0	1	5	0
Hypertensive heart disease (I11)	94	0	0	0	0	0	0	2	5	19	16	15	37	0
Hypertensive heart and renal disease (I13)	13	0	0	0	0	0	0	0	0	2	2	3	6	0
Ischemic heart disease (I20-I25)	1216	0	0	0	0	0	1	2	9	57	137	218	792	0
All other forms of heart disease (I26-I51)	587	1	1	0	2	2	2	7	19	27	55	95	376	0
<b>Malignant neoplasms (C00-C97)</b>	1972	0	3	0	0	2	3	6	25	132	394	565	842	0
Malignant neoplasms of lip, oral cavity and pharynx (C00-C14)	35	0	0	0	0	0	0	0	1	6	7	12	9	0
Malignant neoplasms of digestive organs (C15-C26)	482	0	0	0	0	0	0	1	7	34	99	137	204	0
Malignant neoplasms of respiratory and intrathoracic organs (C30-C39)	575	0	0	0	0	1	0	2	0	29	112	201	230	0
Malignant neoplasms of breast (C50)	134	0	0	0	0	0	0	0	6	19	35	27	47	0
Malignant neoplasms of female genital organs, (C51-C58)	109	0	0	0	0	0	0	0	2	6	31	32	38	0
Malignant neoplasms of male genital organs, (C60-C63)	93	0	0	0	0	0	0	0	1	2	11	15	64	0
Malignant neoplasms of urinary tract (C64-C68)	103	0	0	0	0	0	0	0	1	6	19	20	57	0
Malignant neoplasms of meninges, brain, and other parts of central nervous system (C70-C72)	43	0	1	0	0	1	1	1	3	5	17	9	5	0
Malignant neoplasms of lymphoid, hematopoietic, and related tissues (C81-C96)	198	0	2	0	0	0	1	1	1	10	29	56	98	0
All other and unspecified malignant neoplasms (C40-C49, C69, C73-C80, C97)	200	0	0	0	0	0	1	1	3	15	34	56	90	0
<b>Cerebrovascular diseases (I60-I69)</b>	439	0	0	0	1	0	1	1	2	13	31	64	326	0

TABLE F-12 (continued)  
(2014 - Delaware, All Races, Both Sexes)

	Age of Decedent													
	Total	< 1	1-4	5-9	10-14	15-19	20-24	25-34	35-44	45-54	55-64	65-74	75+	Unk
<b>Chronic lower respiratory diseases (J40-J47)</b>	458	0	0	0	0	0	1	0	4	16	43	101	293	0
<b>Accidents (unintentional injuries) (V01-X59, Y85-Y86)</b>	436	1	3	0	3	16	31	71	60	64	50	35	102	0
Motor Vehicle Accidents (V02-V04, (V09.0,V09.2,V12-V14, V19.0-V19.2, V19.4-V19.6,V20-V79, V80.3-V80.5, V81.0-V81.1, V82.0-V82.1, V83-V86, V87.0-V87.8, V88.0-V88.8,V89.0,V89.2))	125	0	0	0	2	6	19	25	14	17	16	11	15	0
Nontransport Accidents (W00-X59, Y86)	306	1	3	0	1	10	12	45	45	46	33	23	87	0
<b>Diabetes mellitus (E10-E14)</b>	226	0	0	0	0	0	1	2	6	26	43	51	97	0
<b>Influenza and pneumonia (J10-J18)</b>	156	1	0	0	0	0	0	3	0	8	12	20	112	0
<b>Alzheimer's disease (G30)</b>	188	0	0	0	0	0	0	0	0	0	0	11	177	0
<b>Nephritis, nephrotic syndrome, and nephrosis (N00-N07, N17-N19, N25-N27)</b>	172	0	0	0	0	0	0	1	2	7	24	39	99	0
<b>Septicemia (A40-A41)</b>	136	0	0	0	0	0	0	1	4	7	20	25	79	0
<b>Intentional self-harm (suicide) (X60-X84, Y87.0)</b>	126	0	0	0	0	3	6	19	24	29	18	11	16	0
<b>Chronic liver disease and cirrhosis (K70, K73-K74)</b>	110	0	0	0	0	0	0	0	5	16	42	23	24	0
<b>Essential hypertension and hypertensive renal disease (I10, I12)</b>	48	0	0	0	0	0	0	0	1	5	6	6	30	0
<b>Aortic aneurysm and dissection (I71)</b>	30	0	0	0	0	0	0	1	2	3	3	8	13	0
<b>Assault (homicide) (X85-Y09, Y87.1)</b>	57	3	2	0	1	3	10	15	12	5	4	2	0	0
<b>Human immunodeficiency virus (HIV) (B20-B24)</b>	38	0	0	0	0	0	0	4	3	14	11	5	1	0
<b>Certain conditions originating in the perinatal period (P00-P96)</b>	44	44	0	0	0	0	0	0	0	0	0	0	0	0
<b>Congenital malformations, deformations, and chromosomal abnormalities (Q00-Q99)</b>	21	10	1	0	0	0	1	0	1	2	2	4	0	0
<b>All other causes</b>	1678	14	2	1	2	2	3	24	32	83	161	244	1110	0
<b>TOTAL</b>	8252	74	12	1	9	28	60	159	216	536	1074	1546	4537	0

Note: \*ICD Codes, Tenth Revision.

LCDAGEDE

Source: Delaware Health and Social Services, Division of Public Health, Delaware Health Statistics



TABLE F-13  
NUMBER OF DEATHS BY AGE FOR SELECTED LEADING CAUSES OF DEATH  
KENT, 2014  
**(ALL RACES, BOTH SEXES)**

Cause of Death*	Age of Decedent													
	Total	< 1	1-4	5-9	10-14	15-19	20-24	25-34	35-44	45-54	55-64	65-74	75+	Unk
<b>Diseases of the heart (I00-I09, I11, I13, I20-I51)</b>	346	0	0	0	0	0	1	3	9	23	38	61	211	0
Acute rheumatic fever and chronic rheumatic heart disease (I00-I09)	0	0	0	0	0	0	0	0	0	0	0	0	0	0
Hypertensive heart disease (I11)	24	0	0	0	0	0	0	0	1	5	3	6	9	0
Hypertensive heart and renal disease (I13)	3	0	0	0	0	0	0	0	0	1	0	1	1	0
Ischemic heart disease (I20-I25)	217	0	0	0	0	0	1	1	2	13	25	40	135	0
All other forms of heart disease (I26-I51)	102	0	0	0	0	0	0	2	6	4	10	14	66	0
<b>Malignant neoplasms (C00-C97)</b>	385	0	1	0	0	0	2	1	5	23	95	104	154	0
Malignant neoplasms of lip, oral cavity and pharynx (C00-C14)	6	0	0	0	0	0	0	0	0	0	3	3	0	0
Malignant neoplasms of digestive organs (C15-C26)	104	0	0	0	0	0	0	0	1	5	23	27	48	0
Malignant neoplasms of respiratory and intrathoracic organs (C30-C39)	117	0	0	0	0	0	0	0	0	6	33	39	39	0
Malignant neoplasms of breast (C50)	22	0	0	0	0	0	0	0	2	2	4	6	8	0
Malignant neoplasms of female genital organs, (C51-C58)	27	0	0	0	0	0	0	0	1	2	8	9	7	0
Malignant neoplasms of male genital organs, (C60-C63)	18	0	0	0	0	0	0	0	0	0	1	3	14	0
Malignant neoplasms of urinary tract (C64-C68)	20	0	0	0	0	0	0	0	0	1	5	4	10	0
Malignant neoplasms of meninges, brain, and other parts of central nervous system (C70-C72)	6	0	1	0	0	0	1	1	0	1	2	0	0	0
Malignant neoplasms of lymphoid, hematopoietic, and related tissues (C81-C96)	32	0	0	0	0	0	0	0	0	2	5	9	16	0
All other and unspecified malignant neoplasms (C40-C49, C69, C73-C80, C97)	33	0	0	0	0	0	1	0	1	4	11	4	12	0
<b>Cerebrovascular diseases (I60-I69)</b>	75	0	0	0	0	0	0	1	1	2	5	17	49	0

TABLE F-13 (continued)  
(2014 - Kent, All Races, Both Sexes)

	Age of Decedent													
	Total	< 1	1-4	5-9	10-14	15-19	20-24	25-34	35-44	45-54	55-64	65-74	75+	Unk
<b>Chronic lower respiratory diseases (J40-J47)</b>	93	0	0	0	0	0	0	0	1	7	10	25	50	0
<b>Accidents (unintentional injuries) (V01-X59, Y85-Y86)</b>	92	0	2	0	2	4	4	16	14	16	9	5	20	0
Motor Vehicle Accidents (V02-V04, (V09.0,V09.2,V12-V14, V19.0-V19.2, V19.4-V19.6,V20-V79, V80.3-V80.5, V81.0-V81.1, V82.0-V82.1, V83-V86, V87.0-V87.8, V88.0-V88.8,V89.0,V89.2)	27	0	0	0	1	2	4	7	3	2	5	1	2	0
Nontransport Accidents (W00-X59, Y86)	62	0	2	0	1	2	0	9	10	13	4	3	18	0
<b>Diabetes mellitus (E10-E14)</b>	36	0	0	0	0	0	0	2	0	6	9	7	12	0
<b>Influenza and pneumonia (J10-J18)</b>	32	1	0	0	0	0	0	2	0	2	4	4	19	0
<b>Alzheimer's disease (G30)</b>	21	0	0	0	0	0	0	0	0	0	0	2	19	0
<b>Nephritis, nephrotic syndrome, and nephrosis (N00-N07, N17-N19, N25-N27)</b>	37	0	0	0	0	0	0	0	1	4	6	10	16	0
<b>Septicemia (A40-A41)</b>	31	0	0	0	0	0	0	0	2	2	5	6	16	0
<b>Intentional self-harm (suicide) (X60-X84, Y87.0)</b>	29	0	0	0	0	1	1	6	6	6	5	1	3	0
<b>Chronic liver disease and cirrhosis (K70, K73-K74)</b>	23	0	0	0	0	0	0	0	1	1	8	8	5	0
<b>Essential hypertension and hypertensive renal disease (I10, I12)</b>	11	0	0	0	0	0	0	0	1	1	0	3	6	0
<b>Aortic aneurysm and dissection (I71)</b>	6	0	0	0	0	0	0	0	1	1	2	1	1	0
<b>Assault (homicide) (X85-Y09, Y87.1)</b>	9	1	0	0	0	0	1	3	2	0	0	2	0	0
<b>Human immunodeficiency virus (HIV) (B20-B24)</b>	4	0	0	0	0	0	0	0	1	1	1	1	0	0
<b>Certain conditions originating in the perinatal period (P00-P96)</b>	7	7	0	0	0	0	0	0	0	0	0	0	0	0
<b>Congenital malformations, deformations, and chromosomal abnormalities (Q00-Q99)</b>	5	3	0	0	0	0	0	0	0	0	2	0	0	0
<b>All other causes</b>	282	1	0	0	0	0	2	6	9	23	25	46	170	0
<b>TOTAL</b>	1524	13	3	0	2	5	11	40	54	118	224	303	751	0

Note: \*ICD Codes, Tenth Revision.

LCDAGEKT

Source: Delaware Health and Social Services, Division of Public Health, Delaware Health Statistics Center

TABLE F-14  
NUMBER OF DEATHS BY AGE FOR SELECTED LEADING CAUSES OF DEATH  
NEW CASTLE, 2014  
**(ALL RACES, BOTH SEXES)**

Cause of Death*	Age of Decedent													Unk
	Total	< 1	1-4	5-9	10-14	15-19	20-24	25-34	35-44	45-54	55-64	65-74	75+	
<b>Diseases of the heart (I00-I09, I11, I13, I20-I51)</b>	951	1	1	0	2	2	1	5	17	52	112	155	603	0
Acute rheumatic fever and chronic rheumatic heart disease (I00-I09)	6	0	0	0	0	0	0	0	0	1	0	1	4	0
Hypertensive heart disease (I11)	45	0	0	0	0	0	0	0	3	7	8	5	22	0
Hypertensive heart and renal disease (I13)	6	0	0	0	0	0	0	0	0	1	2	1	2	0
Ischemic heart disease (I20-I25)	600	0	0	0	0	0	0	1	4	31	72	105	387	0
All other forms of heart disease (I26-I51)	294	1	1	0	2	2	1	4	10	12	30	43	188	0
<b>Malignant neoplasms (C00-C97)</b>	989	0	1	0	0	2	0	4	17	81	211	246	427	0
Malignant neoplasms of lip, oral cavity and pharynx (C00-C14)	19	0	0	0	0	0	0	0	1	3	1	7	7	0
Malignant neoplasms of digestive organs (C15-C26)	242	0	0	0	0	0	0	1	5	23	50	64	99	0
Malignant neoplasms of respiratory and intrathoracic organs (C30-C39)	263	0	0	0	0	1	0	2	0	19	56	76	109	0
Malignant neoplasms of breast (C50)	71	0	0	0	0	0	0	0	2	11	21	14	23	0
Malignant neoplasms of female genital organs, (C51-C58)	53	0	0	0	0	0	0	0	1	4	17	15	16	0
Malignant neoplasms of male genital organs, (C60-C63)	60	0	0	0	0	0	0	0	1	2	8	10	39	0
Malignant neoplasms of urinary tract (C64-C68)	49	0	0	0	0	0	0	0	1	2	10	7	29	0
Malignant neoplasms of meninges, brain, and other parts of central nervous system (C70-C72)	24	0	0	0	0	1	0	0	3	3	10	4	3	0
Malignant neoplasms of lymphoid, hematopoietic, and related tissues (C81-C96)	107	0	1	0	0	0	0	1	1	7	21	24	52	0
All other and unspecified malignant neoplasms (C40-C49, C69, C73-C80,C97)	101	0	0	0	0	0	0	0	2	7	17	25	50	0
<b>Cerebrovascular diseases (I60-I69)</b>	252	0	0	0	0	0	0	0	1	7	24	31	189	0

TABLE F-14 (continued)  
(2014 - New Castle, All Races, Both Sexes)

	Age of Decedent													Unk
	Total	< 1	1-4	5-9	10-14	15-19	20-24	25-34	35-44	45-54	55-64	65-74	75+	
<b>Chronic lower respiratory diseases (J40-J47)</b>	223	0	0	0	0	0	0	0	1	6	22	47	147	0
<b>Accidents (unintentional injuries) (V01-X59, Y85-Y86)</b>	228	1	0	0	0	6	21	40	38	32	25	19	46	0
Motor Vehicle Accidents (V02-V04, (V09.0,V09.2,V12-V14, V19.0-V19.2, V19.4-V19.6,V20-V79, V80.3-V80.5, V81.0-V81.1, V82.0-V82.1, V83-V86, V87.0-V87.8, V88.0-V88.8,V89.0,V89.2)	59	0	0	0	0	1	12	12	10	8	5	4	7	0
Nontransport Accidents (W00-X59, Y86)	168	1	0	0	0	5	9	27	28	24	20	15	39	0
<b>Diabetes mellitus (E10-E14)</b>	118	0	0	0	0	0	0	0	6	17	23	31	41	0
<b>Influenza and pneumonia (J10-J18)</b>	91	0	0	0	0	0	0	1	0	5	6	11	68	0
<b>Alzheimer's disease (G30)</b>	116	0	0	0	0	0	0	0	0	0	0	6	110	0
<b>Nephritis, nephrotic syndrome, and nephrosis (N00-N07, N17-N19, N25-N27)</b>	103	0	0	0	0	0	0	1	1	3	14	19	65	0
<b>Septicemia (A40-A41)</b>	75	0	0	0	0	0	0	1	0	2	11	14	47	0
<b>Intentional self-harm (suicide) (X60-X84, Y87.0)</b>	69	0	0	0	0	2	4	10	13	13	10	6	11	0
<b>Chronic liver disease and cirrhosis (K70, K73-K74)</b>	48	0	0	0	0	0	0	0	4	9	21	5	9	0
<b>Essential hypertension and hypertensive renal disease (I10, I12)</b>	25	0	0	0	0	0	0	0	0	3	4	3	15	0
<b>Aortic aneurysm and dissection (I71)</b>	15	0	0	0	0	0	0	1	0	1	1	5	7	0
<b>Assault (homicide) (X85-Y09, Y87.1)</b>	42	0	2	0	1	3	8	11	9	4	4	0	0	0
<b>Human immunodeficiency virus (HIV) (B20-B24)</b>	27	0	0	0	0	0	0	3	1	10	9	3	1	0
<b>Certain conditions originating in the perinatal period (P00-P96)</b>	29	29	0	0	0	0	0	0	0	0	0	0	0	0
<b>Congenital malformations, deformations, and chromosomal abnormalities (Q00-Q99)</b>	11	7	1	0	0	0	1	0	1	0	0	1	0	0
<b>All other causes</b>	922	11	0	1	2	2	1	15	17	51	99	120	603	0
<b>TOTAL</b>	4334	49	5	1	5	17	36	92	126	296	596	722	2389	0

Note: \*ICD Codes, Tenth Revision.

LCDAGENC

Source: Delaware Health and Social Services, Division of Public Health, Delaware Health Statistics Center

TABLE F-15  
NUMBER OF DEATHS BY AGE FOR SELECTED LEADING CAUSES OF DEATH  
CITY OF WILMINGTON, 2014  
**(ALL RACES, BOTH SEXES)**

Cause of Death*	Age of Decedent													
	Total	< 1	1-4	5-9	10-14	15-19	20-24	25-34	35-44	45-54	55-64	65-74	75+	Unk
<b>Diseases of the heart (I00-I09, I11, I13, I20-I51)</b>	156	1	0	0	0	2	0	1	5	13	27	31	76	0
Acute rheumatic fever and chronic rheumatic heart disease (I00-I09)	1	0	0	0	0	0	0	0	0	0	0	0	1	0
Hypertensive heart disease (I11)	10	0	0	0	0	0	0	0	1	2	2	0	5	0
Hypertensive heart and renal disease (I13)	2	0	0	0	0	0	0	0	0	1	1	0	0	0
Ischemic heart disease (I20-I25)	93	0	0	0	0	0	0	0	1	8	16	21	47	0
All other forms of heart disease (I26-I51)	50	1	0	0	0	2	0	1	3	2	8	10	23	0
<b>Malignant neoplasms (C00-C97)</b>	157	0	0	0	0	0	0	1	2	11	38	47	58	0
Malignant neoplasms of lip, oral cavity and pharynx (C00-C14)	3	0	0	0	0	0	0	0	0	0	0	1	2	0
Malignant neoplasms of digestive organs (C15-C26)	48	0	0	0	0	0	0	0	0	4	10	16	18	0
Malignant neoplasms of respiratory and intrathoracic organs (C30-C39)	30	0	0	0	0	0	0	1	0	2	8	8	11	0
Malignant neoplasms of breast (C50)	7	0	0	0	0	0	0	0	1	0	3	1	2	0
Malignant neoplasms of female genital organs, (C51-C58)	11	0	0	0	0	0	0	0	0	2	4	3	2	0
Malignant neoplasms of male genital organs, (C60-C63)	9	0	0	0	0	0	0	0	0	0	1	3	5	0
Malignant neoplasms of urinary tract (C64-C68)	7	0	0	0	0	0	0	0	0	0	3	3	1	0
Malignant neoplasms of meninges, brain, and other parts of central nervous system (C70-C72)	4	0	0	0	0	0	0	0	1	0	1	0	2	0
Malignant neoplasms of lymphoid, hematopoietic, and related tissues (C81-C96)	20	0	0	0	0	0	0	0	0	2	2	10	6	0
All other and unspecified malignant neoplasms (C40-C49, C69, C73-C80, C97)	18	0	0	0	0	0	0	0	0	1	6	2	9	0
<b>Cerebrovascular diseases (I60-I69)</b>	33	0	0	0	0	0	0	0	1	0	6	6	20	0

TABLE F-15 (continued)  
(2014 - City of Wilmington, All Races, Both Sexes)

	Age of Decedent												Unk	
	Total	< 1	1-4	5-9	10-14	15-19	20-24	25-34	35-44	45-54	55-64	65-74		75+
<b>Chronic lower respiratory diseases (J40-J47)</b>	30	0	0	0	0	0	0	0	1	1	4	6	18	0
<b>Accidents (unintentional injuries) (V01-X59, Y85-Y86)</b>	41	0	0	0	0	1	2	9	6	3	9	4	7	0
Motor Vehicle Accidents (V02-V04, V09.0,V09.2,V12-V14, V19.0-V19.2, V19.4-V19.6,V20-V79, V80.3-V80.5, V81.0-V81.1, V82.0-V82.1, V83-V86, V87.0-V87.8, V88.0-V88.8,V89.0,V89.2)	8	0	0	0	0	0	0	4	2	0	1	0	1	0
Nontransport Accidents (W00-X59, Y86)	33	0	0	0	0	1	2	5	4	3	8	4	6	0
<b>Diabetes mellitus (E10-E14)</b>	34	0	0	0	0	0	0	0	2	4	8	8	12	0
<b>Influenza and pneumonia (J10-J18)</b>	7	0	0	0	0	0	0	1	0	0	1	1	4	0
<b>Alzheimer's disease (G30)</b>	16	0	0	0	0	0	0	0	0	0	0	2	14	0
<b>Nephritis, nephrotic syndrome, and nephrosis (N00-N07, N17-N19, N25-N27)</b>	14	0	0	0	0	0	0	0	0	0	2	1	11	0
<b>Septicemia (A40-A41)</b>	13	0	0	0	0	0	0	0	0	1	1	4	7	0
<b>Intentional self-harm (suicide) (X60-X84, Y87.0)</b>	12	0	0	0	0	0	0	3	2	1	3	1	2	0
<b>Chronic liver disease and cirrhosis (K70, K73-K74)</b>	8	0	0	0	0	0	0	0	0	0	4	3	1	0
<b>Essential hypertension and hypertensive renal disease (I10, I12)</b>	12	0	0	0	0	0	0	0	0	2	2	2	6	0
<b>Aortic aneurysm and dissection (I71)</b>	2	0	0	0	0	0	0	0	0	1	0	1	0	0
<b>Assault (homicide) (X85-Y09, Y87.1)</b>	22	0	2	0	0	2	4	6	3	4	1	0	0	0
<b>Human immunodeficiency virus (HIV) (B20-B24)</b>	21	0	0	0	0	0	0	3	1	9	5	2	1	0
<b>Certain conditions originating in the perinatal period (P00-P96)</b>	8	8	0	0	0	0	0	0	0	0	0	0	0	0
<b>Congenital malformations, deformations, and chromosomal abnormalities (Q00-Q99)</b>	3	3	0	0	0	0	0	0	0	0	0	0	0	0
<b>All other causes</b>	140	2	0	0	0	0	0	4	3	12	18	19	82	0
<b>TOTAL</b>	729	14	2	0	0	5	6	28	26	62	129	138	319	0

Note: \*ICD Codes, Tenth Revision.

LCDAGEWLM

Source: Delaware Health and Social Services, Division of Public Health, Delaware Health Statistics Center

TABLE F-16  
NUMBER OF DEATHS BY AGE FOR SELECTED LEADING CAUSES OF DEATH  
SUSSEX, 2014  
(ALL RACES, BOTH SEXES)

Cause of Death*	Age of Decedent													
	Total	< 1	1-4	5-9	10-14	15-19	20-24	25-34	35-44	45-54	55-64	65-74	75+	Unk
<b>Diseases of the heart (I00-I09, I11, I13, I20-I51)</b>	620	0	0	0	0	0	1	3	7	31	60	116	402	0
Acute rheumatic fever and chronic rheumatic heart disease (I00-I09)	1	0	0	0	0	0	0	0	0	0	0	0	1	0
Hypertensive heart disease (I11)	25	0	0	0	0	0	0	2	1	7	5	4	6	0
Hypertensive heart and renal disease (I13)	4	0	0	0	0	0	0	0	0	0	0	1	3	0
Ischemic heart disease (I20-I25)	399	0	0	0	0	0	0	0	3	13	40	73	270	0
All other forms of heart disease (I26-I51)	191	0	0	0	0	0	1	1	3	11	15	38	122	0
<b>Malignant neoplasms (C00-C97)</b>	598	0	1	0	0	0	1	1	3	28	88	215	261	0
Malignant neoplasms of lip, oral cavity and pharynx (C00-C14)	10	0	0	0	0	0	0	0	0	3	3	2	2	0
Malignant neoplasms of digestive organs (C15-C26)	136	0	0	0	0	0	0	0	1	6	26	46	57	0
Malignant neoplasms of respiratory and intrathoracic organs (C30-C39)	195	0	0	0	0	0	0	0	0	4	23	86	82	0
Malignant neoplasms of breast (C50)	41	0	0	0	0	0	0	0	2	6	10	7	16	0
Malignant neoplasms of female genital organs, (C51-C58)	29	0	0	0	0	0	0	0	0	0	6	8	15	0
Malignant neoplasms of male genital organs, (C60-C63)	15	0	0	0	0	0	0	0	0	0	2	2	11	0
Malignant neoplasms of urinary tract (C64-C68)	34	0	0	0	0	0	0	0	0	3	4	9	18	0
Malignant neoplasms of meninges, brain, and other parts of central nervous system (C70-C72)	13	0	0	0	0	0	0	0	0	1	5	5	2	0
Malignant neoplasms of lymphoid, hematopoietic, and related tissues (C81-C96)	59	0	1	0	0	0	1	0	0	1	3	23	30	0
All other and unspecified malignant neoplasms (C40-C49, C69, C73-C80, C97)	66	0	0	0	0	0	0	1	0	4	6	27	28	0
<b>Cerebrovascular diseases (I60-I69)</b>	112	0	0	0	1	0	1	0	0	4	2	16	88	0

TABLE F-16 (continued)  
(2014 - Sussex, All Races, Both Sexes)

	Age of Decedent													
	Total	< 1	1-4	5-9	10-14	15-19	20-24	25-34	35-44	45-54	55-64	65-74	75+	Unk
<b>Chronic lower respiratory diseases (J40-J47)</b>	142	0	0	0	0	0	1	0	2	3	11	29	96	0
<b>Accidents (unintentional injuries) (V01-X59, Y85-Y86)</b>	116	0	1	0	1	6	6	15	8	16	16	11	36	0
Motor Vehicle Accidents (V02-V04, (V09.0,V09.2,V12-V14, V19.0-V19.2, V19.4-V19.6,V20-V79, V80.3-V80.5, V81.0-V81.1, V82.0-V82.1, V83-V86, V87.0-V87.8, V88.0-V88.8,V89.0,V89.2)	39	0	0	0	1	3	3	6	1	7	6	6	6	0
Nontransport Accidents (W00-X59, Y86)	76	0	1	0	0	3	3	9	7	9	9	5	30	0
<b>Diabetes mellitus (E10-E14)</b>	72	0	0	0	0	0	1	0	0	3	11	13	44	0
<b>Influenza and pneumonia (J10-J18)</b>	33	0	0	0	0	0	0	0	0	1	2	5	25	0
<b>Alzheimer's disease (G30)</b>	51	0	0	0	0	0	0	0	0	0	0	3	48	0
<b>Nephritis, nephrotic syndrome, and nephrosis (N00-N07, N17-N19, N25-N27)</b>	32	0	0	0	0	0	0	0	0	0	4	10	18	0
<b>Septicemia (A40-A41)</b>	30	0	0	0	0	0	0	0	2	3	4	5	16	0
<b>Intentional self-harm (suicide) (X60-X84, Y87.0)</b>	28	0	0	0	0	0	1	3	5	10	3	4	2	0
<b>Chronic liver disease and cirrhosis (K70, K73-K74)</b>	39	0	0	0	0	0	0	0	0	6	13	10	10	0
<b>Essential hypertension and hypertensive renal disease (I10, I12)</b>	12	0	0	0	0	0	0	0	0	1	2	0	9	0
<b>Aortic aneurysm and dissection (I71)</b>	9	0	0	0	0	0	0	0	1	1	0	2	5	0
<b>Assault (homicide) (X85-Y09, Y87.1)</b>	6	2	0	0	0	0	1	1	1	1	0	0	0	0
<b>Human immunodeficiency virus (HIV) (B20-B24)</b>	7	0	0	0	0	0	0	1	1	3	1	1	0	0
<b>Certain conditions originating in the perinatal period (P00-P96)</b>	8	8	0	0	0	0	0	0	0	0	0	0	0	0
<b>Congenital malformations, deformations, and chromosomal abnormalities (Q00-Q99)</b>	5	0	0	0	0	0	0	0	0	2	0	3	0	0
<b>All other causes</b>	474	2	2	0	0	0	0	3	6	9	37	78	337	0
<b>TOTAL</b>	2394	12	4	0	2	6	13	27	36	122	254	521	1397	0

Note: \*ICD Codes, Tenth Revision.

LCDAGESX

Source: Delaware Health and Social Services, Division of Public Health, Delaware Health Statistics Center



TABLE F-17  
NUMBER OF DEATHS BY AGE FOR SELECTED LEADING CAUSES OF DEATH  
DELAWARE, 2014  
(ALL RACES, MALES)

Cause of Death*	Age of Decedent													
	Total	< 1	1-4	5-9	10-14	15-19	20-24	25-34	35-44	45-54	55-64	65-74	75+	Unk
<b>Diseases of the heart (I00-I09, I11, I13, I20-I51)</b>	1016	1	0	0	1	2	3	10	15	73	149	198	564	0
Acute rheumatic fever and chronic rheumatic heart disease (I00-I09)	1	0	0	0	0	0	0	0	0	0	0	0	1	0
Hypertensive heart disease (I11)	52	0	0	0	0	0	0	2	2	15	11	7	15	0
Hypertensive heart and renal disease (I13)	7	0	0	0	0	0	0	0	0	2	2	1	2	0
Ischemic heart disease (I20-I25)	659	0	0	0	0	0	1	2	6	37	99	140	374	0
All other forms of heart disease (I26-I51)	297	1	0	0	1	2	2	6	7	19	37	50	172	0
<b>Malignant neoplasms (C00-C97)</b>	1019	0	2	0	0	1	3	4	9	64	189	309	438	0
Malignant neoplasms of lip, oral cavity and pharynx (C00-C14)	21	0	0	0	0	0	0	0	0	4	4	9	4	0
Malignant neoplasms of digestive organs (C15-C26)	284	0	0	0	0	0	0	0	3	22	66	82	111	0
Malignant neoplasms of respiratory and intrathoracic organs (C30-C39)	292	0	0	0	0	1	0	2	0	15	53	101	120	0
Malignant neoplasms of breast (C50)	0	0	0	0	0	0	0	0	0	0	0	0	0	0
Malignant neoplasms of male genital organs, (C60-C63)	93	0	0	0	0	0	0	0	1	2	11	15	64	0
Malignant neoplasms of urinary tract (C64-C68)	71	0	0	0	0	0	0	0	1	4	15	17	34	0
Malignant neoplasms of meninges, brain, and other parts of central nervous system (C70-C72)	23	0	1	0	0	0	1	1	2	3	5	7	3	0
Malignant neoplasms of lymphoid, hematopoietic, and related tissues (C81-C96)	117	0	1	0	0	0	1	1	0	8	15	39	52	0
All other and unspecified malignant neoplasms (C40-C49, C69, C73-C80, C97)	118	0	0	0	0	0	1	0	2	6	20	39	50	0
<b>Cerebrovascular diseases (I60-I69)</b>	178	0	0	0	1	0	0	0	2	4	13	37	121	0

TABLE F-17 (continued)  
(2014 - All Races, Male)

	Age of Decedent													
	Total	< 1	1-4	5-9	10-14	15-19	20-24	25-34	35-44	45-54	55-64	65-74	75+	Unk
<b>Chronic lower respiratory diseases (J40-J47)</b>	214	0	0	0	0	0	1	0	2	9	22	49	131	0
<b>Accidents (unintentional injuries) (V01-X59, Y85-Y86)</b>	277	1	1	0	1	10	23	50	43	40	33	23	52	0
Motor Vehicle Accidents (V02-V04, V09.0, V09.2, V12-V14, V19.0-V19.2, V19.4-V19.6, V20-V79, V80.3-V80.5, V81.0-V81.1, V82.0-V82.1, V83-V86, V87.0-V87.8, V88.0-V88.8, V89.0, V89.2)	85	0	0	0	0	4	14	20	11	11	12	6	7	0
Nontransport Accidents (W00-X59, Y86)	187	1	1	0	1	6	9	29	31	28	20	16	45	0
<b>Diabetes mellitus (E10-E14)</b>	124	0	0	0	0	0	1	1	2	13	29	32	46	0
<b>Influenza and pneumonia (J10-J18)</b>	66	0	0	0	0	0	0	0	0	5	7	10	44	0
<b>Alzheimer's disease (G30)</b>	55	0	0	0	0	0	0	0	0	0	0	5	50	0
<b>Nephritis, nephrotic syndrome, and nephrosis (N00-N07, N17-N19, N25-N27)</b>	89	0	0	0	0	0	0	1	0	5	14	17	52	0
<b>Septicemia (A40-A41)</b>	67	0	0	0	0	0	0	0	1	4	15	13	34	0
<b>Intentional self-harm (suicide) (X60-X84, Y87.0)</b>	100	0	0	0	0	1	3	14	20	25	14	10	13	0
<b>Chronic liver disease and cirrhosis (K70, K73-K74)</b>	66	0	0	0	0	0	0	0	4	8	27	15	12	0
<b>Essential hypertension and hypertensive renal disease (I10, I12)</b>	19	0	0	0	0	0	0	0	0	4	2	5	8	0
<b>Aortic aneurysm and dissection (I71)</b>	21	0	0	0	0	0	0	1	2	3	2	7	6	0
<b>Assault (homicide) (X85-Y09, Y87.1)</b>	47	2	0	0	1	3	9	13	11	3	3	2	0	0
<b>Human immunodeficiency virus (HIV) (B20-B24)</b>	24	0	0	0	0	0	0	3	1	10	7	2	1	0
<b>Certain conditions originating in the perinatal period (P00-P96)</b>	23	23	0	0	0	0	0	0	0	0	0	0	0	0
<b>Congenital malformations, deformations, and chromosomal abnormalities (Q00-Q99)</b>	8	3	1	0	0	0	1	0	1	1	0	1	0	0
<b>All other causes</b>	777	4	1	0	2	2	1	15	20	50	83	135	464	0
<b>TOTAL</b>	4190	34	5	0	6	19	45	112	133	321	609	870	2036	0

Note: \*ICD Codes, Tenth Revision.

LCDAGMAL

Source: Delaware Health and Social Services, Division of Public Health, Delaware Health Statistics Center

TABLE F-18  
NUMBER OF DEATHS BY AGE FOR SELECTED LEADING CAUSES OF DEATH  
DELAWARE, 2014  
(ALL RACES, FEMALES)

Cause of Death*	Age of Decedent													
	Total	< 1	1-4	5-9	10-14	15-19	20-24	25-34	35-44	45-54	55-64	65-74	75+	Unk
<b>Diseases of the heart (I00-I09, I11, I13, I20-I51)</b>	901	0	1	0	1	0	0	1	18	33	61	134	652	0
Acute rheumatic fever and chronic rheumatic heart disease (I00-I09)	6	0	0	0	0	0	0	0	0	1	0	1	4	0
Hypertensive heart disease (I11)	42	0	0	0	0	0	0	0	3	4	5	8	22	0
Hypertensive heart and renal disease (I13)	6	0	0	0	0	0	0	0	0	0	0	2	4	0
Ischemic heart disease (I20-I25)	557	0	0	0	0	0	0	0	3	20	38	78	418	0
All other forms of heart disease (I26-I51)	290	0	1	0	1	0	0	1	12	8	18	45	204	0
<b>Malignant neoplasms (C00-C97)</b>	953	0	1	0	0	1	0	2	16	68	205	256	404	0
Malignant neoplasms of lip, oral cavity and pharynx (C00-C14)	14	0	0	0	0	0	0	0	1	2	3	3	5	0
Malignant neoplasms of digestive organs (C15-C26)	198	0	0	0	0	0	0	1	4	12	33	55	93	0
Malignant neoplasms of respiratory and intrathoracic organs (C30-C39)	283	0	0	0	0	0	0	0	0	14	59	100	110	0
Malignant neoplasms of breast (C50)	134	0	0	0	0	0	0	0	6	19	35	27	47	0
Malignant neoplasms of female genital organs, (C51-C58)	109	0	0	0	0	0	0	0	2	6	31	32	38	0
Malignant neoplasms of urinary tract (C64-C68)	32	0	0	0	0	0	0	0	0	2	4	3	23	0
Malignant neoplasms of meninges, brain, and other parts of central nervous system (C70-C72)	20	0	0	0	0	1	0	0	1	2	12	2	2	0
Malignant neoplasms of lymphoid, hematopoietic, and related tissues (C81-C96)	81	0	1	0	0	0	0	0	1	2	14	17	46	0
All other and unspecified malignant neoplasms (C40-C49, C69, C73-C80, C97)	82	0	0	0	0	0	0	1	1	9	14	17	40	0
<b>Cerebrovascular diseases (I60-I69)</b>	261	0	0	0	0	0	1	1	0	9	18	27	205	0

TABLE F-18 (continued)  
(2014 - All Races, Female)

	Age of Decedent													
	Total	< 1	1-4	5-9	10-14	15-19	20-24	25-34	35-44	45-54	55-64	65-74	75+	Unk
<b>Chronic lower respiratory diseases (J40-J47)</b>	244	0	0	0	0	0	0	0	2	7	21	52	162	0
<b>Accidents (unintentional injuries) (V01-X59, Y85-Y86)</b>	159	0	2	0	2	6	8	21	17	24	17	12	50	0
Motor Vehicle Accidents (V02-V04, V09.0, V09.2, V12-V14, V19.0-V19.2, V19.4-V19.6, V20-V79, V80.3-V80.5, V81.0-V81.1, V82.0-V82.1, V83-V86, V87.0-V87.8, V88.0-V88.8, V89.0, V89.2)	40	0	0	0	2	2	5	5	3	6	4	5	8	0
Nontransport Accidents (W00-X59, Y86)	119	0	2	0	0	4	3	16	14	18	13	7	42	0
<b>Diabetes mellitus (E10-E14)</b>	102	0	0	0	0	0	0	1	4	13	14	19	51	0
<b>Influenza and pneumonia (J10-J18)</b>	90	1	0	0	0	0	0	3	0	3	5	10	68	0
<b>Alzheimer's disease (G30)</b>	133	0	0	0	0	0	0	0	0	0	0	6	127	0
<b>Nephritis, nephrotic syndrome, and nephrosis (N00-N07, N17-N19, N25-N27)</b>	83	0	0	0	0	0	0	0	2	2	10	22	47	0
<b>Septicemia (A40-A41)</b>	69	0	0	0	0	0	0	1	3	3	5	12	45	0
<b>Intentional self-harm (suicide) (X60-X84, Y87.0)</b>	26	0	0	0	0	2	3	5	4	4	4	1	3	0
<b>Chronic liver disease and cirrhosis (K70, K73-K74)</b>	44	0	0	0	0	0	0	0	1	8	15	8	12	0
<b>Essential hypertension and hypertensive renal disease (I10, I12)</b>	29	0	0	0	0	0	0	0	1	1	4	1	22	0
<b>Aortic aneurysm and dissection (I71)</b>	9	0	0	0	0	0	0	0	0	0	1	1	7	0
<b>Assault (homicide) (X85-Y09, Y87.1)</b>	10	1	2	0	0	0	1	2	1	2	1	0	0	0
<b>Human immunodeficiency virus (HIV) (B20-B24)</b>	14	0	0	0	0	0	0	1	2	4	4	3	0	0
<b>Certain conditions originating in the perinatal period (P00-P96)</b>	21	21	0	0	0	0	0	0	0	0	0	0	0	0
<b>Congenital malformations, deformations, and chromosomal abnormalities (Q00-Q99)</b>	13	7	0	0	0	0	0	0	0	1	2	3	0	0
<b>All Other Causes</b>	901	10	1	1	0	0	2	9	12	33	78	109	646	0
<b>TOTAL</b>	4062	40	7	1	3	9	15	47	83	215	465	676	2501	0

Note: \*ICD Codes, Tenth Revision.

LCDAGFEM

Source: Delaware Health and Social Services, Division of Public Health, Delaware Health Statistics Center

TABLE F-19  
NUMBER OF DEATHS BY AGE FOR SELECTED LEADING CAUSES OF DEATH  
DELAWARE, 2014  
(WHITE, BOTH SEXES)

Cause of Death*	Age of Decedent													
	Total	< 1	1-4	5-9	10-14	15-19	20-24	25-34	35-44	45-54	55-64	65-74	75+	Unk
<b>Diseases of the heart (I00-I09, I11, I13, I20-I51)</b>	1565	1	1	0	1	0	3	7	20	70	157	245	1060	0
Acute rheumatic fever and chronic rheumatic heart disease (I00-I09)	7	0	0	0	0	0	0	0	0	1	0	1	5	0
Hypertensive heart disease (I11)	72	0	0	0	0	0	0	2	3	11	15	11	30	0
Hypertensive heart and renal disease (I13)	4	0	0	0	0	0	0	0	0	0	0	1	3	0
Ischemic heart disease (I20-I25)	1005	0	0	0	0	0	1	2	6	39	103	159	695	0
All other forms of heart disease (I26-I51)	477	1	1	0	1	0	2	3	11	19	39	73	327	0
<b>Malignant neoplasms (C00-C97)</b>	1601	0	1	0	0	1	1	5	18	93	297	465	720	0
Malignant neoplasms of lip, oral cavity and pharynx (C00-C14)	26	0	0	0	0	0	0	0	1	5	5	7	8	0
Malignant neoplasms of digestive organs (C15-C26)	379	0	0	0	0	0	0	1	2	23	70	111	172	0
Malignant neoplasms of respiratory and intrathoracic organs (C30-C39)	481	0	0	0	0	0	0	1	0	22	88	175	195	0
Malignant neoplasms of breast (C50)	109	0	0	0	0	0	0	0	5	13	27	24	40	0
Malignant neoplasms of female genital organs, (C51-C58)	83	0	0	0	0	0	0	0	2	4	22	25	30	0
Malignant neoplasms of male genital organs, (C60-C63)	67	0	0	0	0	0	0	0	1	2	6	10	48	0
Malignant neoplasms of urinary tract (C64-C68)	94	0	0	0	0	0	0	0	1	5	16	17	55	0
Malignant neoplasms of meninges, brain, and other parts of central nervous system (C70-C72)	39	0	0	0	0	1	1	1	2	4	17	8	5	0
Malignant neoplasms of lymphoid, hematopoietic, and related tissues (C81-C96)	153	0	1	0	0	0	0	1	1	5	22	38	85	0
All other and unspecified malignant neoplasms (C40-C49, C69, C73-C80, C97)	170	0	0	0	0	0	0	1	3	10	24	50	82	0
<b>Cerebrovascular diseases (I60-I69)</b>	358	0	0	0	1	0	0	1	1	7	22	43	283	0

TABLE F-19 (continued)  
(2014 - White, Both Sexes)

	Age of Decedent													
	Total	< 1	1-4	5-9	10-14	15-19	20-24	25-34	35-44	45-54	55-64	65-74	75+	Unk
<b>Chronic lower respiratory diseases (J40-J47)</b>	410	0	0	0	0	0	0	0	2	13	39	85	271	0
<b>Accidents (unintentional injuries) (V01-X59, Y85-Y86)</b>	365	0	1	0	2	11	27	56	48	57	39	29	95	0
Motor Vehicle Accidents (V02-V04, (V09.0,V09.2,V12-V14, V19.0-V19.2, V19.4-V19.6,V20-V79, V80.3-V80.5, V81.0-V81.1, V82.0-V82.1, V83-V86, V87.0-V87.8, V88.0-V88.8,V89.0,V89.2)	100	0	0	0	1	5	15	17	12	13	11	11	15	0
Nontransport Accidents (W00-X59, Y86)	260	0	1	0	1	6	12	38	35	43	27	17	80	0
<b>Diabetes mellitus (E10-E14)</b>	156	0	0	0	0	0	1	2	2	14	28	39	70	0
<b>Influenza and pneumonia (J10-J18)</b>	131	0	0	0	0	0	0	2	0	4	9	18	98	0
<b>Alzheimer's disease (G30)</b>	162	0	0	0	0	0	0	0	0	0	0	11	151	0
<b>Nephritis, nephrotic syndrome, and nephrosis (N00-N07, N17-N19, N25-N27)</b>	116	0	0	0	0	0	0	1	1	3	12	28	71	0
<b>Septicemia (A40-A41)</b>	113	0	0	0	0	0	0	1	3	4	18	19	68	0
<b>Intentional self-harm (suicide) (X60-X84, Y87.0)</b>	117	0	0	0	0	1	5	18	22	27	18	10	16	0
<b>Chronic liver disease and cirrhosis (K70, K73-K74)</b>	97	0	0	0	0	0	0	0	3	12	39	21	22	0
<b>Essential hypertension and hypertensive renal disease (I10, I12)</b>	30	0	0	0	0	0	0	0	0	2	4	2	22	0
<b>Aortic aneurysm and dissection (I71)</b>	24	0	0	0	0	0	0	1	2	1	3	6	11	0
<b>Assault (homicide) (X85-Y09, Y87.1)</b>	12	0	1	0	1	0	2	0	2	2	3	1	0	0
<b>Human immunodeficiency virus (HIV) (B20-B24)</b>	8	0	0	0	0	0	0	0	0	5	2	1	0	0
<b>Certain conditions originating in the perinatal period (P00-P96)</b>	23	23	0	0	0	0	0	0	0	0	0	0	0	0
<b>Congenital malformations, deformations, and chromosomal abnormalities (Q00-Q99)</b>	13	5	1	0	0	0	0	0	1	2	1	3	0	0
<b>All other causes</b>	1376	9	1	0	1	1	3	14	23	52	119	199	954	0
<b>TOTAL</b>	6677	38	6	0	6	14	42	108	148	368	810	1225	3912	0

Note: \*ICD Codes, Tenth Revision.

LCDAGWHT

Source: Delaware Health and Social Services, Division of Public Health, Delaware Health Statistics Center

TABLE F-20  
NUMBER OF DEATHS BY AGE FOR SELECTED LEADING CAUSES OF DEATH  
DELAWARE, 2014  
(WHITE MALES)

Cause of Death*	Age of Decedent													
	Total	< 1	1-4	5-9	10-14	15-19	20-24	25-34	35-44	45-54	55-64	65-74	75+	Unk
<b>Diseases of the heart (I00-I09, I11, I13, I20-I51)</b>	845	1	0	0	1	0	3	7	11	50	117	153	502	0
Acute rheumatic fever and chronic rheumatic heart disease (I00-I09)	1	0	0	0	0	0	0	0	0	0	0	0	1	0
Hypertensive heart disease (I11)	39	0	0	0	0	0	0	2	1	8	10	4	14	0
Hypertensive heart and renal disease (I13)	3	0	0	0	0	0	0	0	0	0	0	1	2	0
Ischemic heart disease (I20-I25)	554	0	0	0	0	0	1	2	5	27	81	108	330	0
All other forms of heart disease (I26-I51)	248	1	0	0	1	0	2	3	5	15	26	40	155	0
<b>Malignant neoplasms (C00-C97)</b>	836	0	0	0	0	0	1	3	8	49	142	250	383	0
Malignant neoplasms of lip, oral cavity and pharynx (C00-C14)	12	0	0	0	0	0	0	0	0	3	2	4	3	0
Malignant neoplasms of digestive organs (C15-C26)	239	0	0	0	0	0	0	0	2	17	50	71	99	0
Malignant neoplasms of respiratory and intrathoracic organs (C30-C39)	240	0	0	0	0	0	0	1	0	13	41	82	103	0
Malignant neoplasms of breast (C50)	0	0	0	0	0	0	0	0	0	0	0	0	0	0
Malignant neoplasms of male genital organs, (C60-C63)	67	0	0	0	0	0	0	0	1	2	6	10	48	0
Malignant neoplasms of urinary tract (C64-C68)	66	0	0	0	0	0	0	0	1	3	14	15	33	0
Malignant neoplasms of meninges, brain, and other parts of central nervous system (C70-C72)	22	0	0	0	0	0	1	1	2	3	5	7	3	0
Malignant neoplasms of lymphoid, hematopoietic, and related tissues (C81-C96)	87	0	0	0	0	0	0	1	0	4	10	26	46	0
All other and unspecified malignant neoplasms (C40-C49, C69, C73-C80, C97)	103	0	0	0	0	0	0	0	2	4	14	35	48	0
<b>Cerebrovascular diseases (I60-I69)</b>	139	0	0	0	1	0	0	0	1	2	9	23	103	0

TABLE F-20 (continued)  
(2014 - White Males)

	Age of Decedent													
	Total	< 1	1-4	5-9	10-14	15-19	20-24	25-34	35-44	45-54	55-64	65-74	75+	Unk
<b>Chronic lower respiratory diseases (J40-J47)</b>	192	0	0	0	0	0	0	0	1	8	20	43	120	0
<b>Accidents (unintentional injuries) (V01-X59, Y85-Y86)</b>	230	0	0	0	1	6	20	38	34	36	27	19	49	0
Motor Vehicle Accidents (V02-V04, V09.0, V09.2, V12-V14, V19.0-V19.2, V19.4-V19.6, V20-V79, V80.3-V80.5, V81.0-V81.1, V82.0-V82.1, V83-V86, V87.0-V87.8, V88.0-V88.8, V89.0, V89.2)	69	0	0	0	0	4	11	14	9	9	9	6	7	0
Nontransport Accidents (W00-X59, Y86)	156	0	0	0	1	2	9	23	24	26	17	12	42	0
<b>Diabetes mellitus (E10-E14)</b>	87	0	0	0	0	0	1	1	1	5	20	26	33	0
<b>Influenza and pneumonia (J10-J18)</b>	59	0	0	0	0	0	0	0	0	4	7	9	39	0
<b>Alzheimer's disease (G30)</b>	49	0	0	0	0	0	0	0	0	0	0	5	44	0
<b>Nephritis, nephrotic syndrome, and nephrosis (N00-N07, N17-N19, N25-N27)</b>	60	0	0	0	0	0	0	1	0	3	7	12	37	0
<b>Septicemia (A40-A41)</b>	56	0	0	0	0	0	0	0	1	3	14	9	29	0
<b>Intentional self-harm (suicide) (X60-X84, Y87.0)</b>	93	0	0	0	0	0	3	13	18	23	14	9	13	0
<b>Chronic liver disease and cirrhosis (K70, K73-K74)</b>	60	0	0	0	0	0	0	0	2	6	27	14	11	0
<b>Essential hypertension and hypertensive renal disease (I10, I12)</b>	10	0	0	0	0	0	0	0	0	2	2	2	4	0
<b>Aortic aneurysm and dissection (I71)</b>	17	0	0	0	0	0	0	1	2	1	2	5	6	0
<b>Assault (homicide) (X85-Y09, Y87.1)</b>	8	0	0	0	1	0	1	0	2	1	2	1	0	0
<b>Human immunodeficiency virus (HIV) (B20-B24)</b>	7	0	0	0	0	0	0	0	0	4	2	1	0	0
<b>Certain conditions originating in the perinatal period (P00-P96)</b>	15	15	0	0	0	0	0	0	0	0	0	0	0	0
<b>Congenital malformations, deformations, and chromosomal abnormalities (Q00-Q99)</b>	5	1	1	0	0	0	0	0	1	1	0	1	0	0
<b>All other causes</b>	631	2	1	0	1	1	1	10	16	32	59	109	399	0
<b>TOTAL</b>	<b>3399</b>	<b>19</b>	<b>2</b>	<b>0</b>	<b>5</b>	<b>7</b>	<b>30</b>	<b>74</b>	<b>98</b>	<b>230</b>	<b>471</b>	<b>691</b>	<b>1772</b>	<b>0</b>

Note: \*ICD Codes, Tenth Revision.

LCDAGEWM

Source: Delaware Health and Social Services, Division of Public Health, Delaware Health Statistics Center



TABLE F-21  
NUMBER OF DEATHS BY AGE FOR SELECTED LEADING CAUSES OF DEATH  
DELAWARE, 2014  
(WHITE FEMALES)

Cause of Death*	Age of Decedent													
	Total	< 1	1-4	5-9	10-14	15-19	20-24	25-34	35-44	45-54	55-64	65-74	75+	Unk
<b>Diseases of the heart (I00-I09, I11, I13, I20-I51)</b>	720	0	1	0	0	0	0	0	9	20	40	92	558	0
Acute rheumatic fever and chronic rheumatic heart disease (I00-I09)	6	0	0	0	0	0	0	0	0	1	0	1	4	0
Hypertensive heart disease (I11)	33	0	0	0	0	0	0	0	2	3	5	7	16	0
Hypertensive heart and renal disease (I13)	1	0	0	0	0	0	0	0	0	0	0	0	1	0
Ischemic heart disease (I20-I25)	451	0	0	0	0	0	0	0	1	12	22	51	365	0
All other forms of heart disease (I26-I51)	229	0	1	0	0	0	0	0	6	4	13	33	172	0
<b>Malignant neoplasms (C00-C97)</b>	765	0	1	0	0	1	0	2	10	44	155	215	337	0
Malignant neoplasms of lip, oral cavity and pharynx (C00-C14)	14	0	0	0	0	0	0	0	1	2	3	3	5	0
Malignant neoplasms of digestive organs (C15-C26)	140	0	0	0	0	0	0	1	0	6	20	40	73	0
Malignant neoplasms of respiratory and intrathoracic organs (C30-C39)	241	0	0	0	0	0	0	0	0	9	47	93	92	0
Malignant neoplasms of breast (C50)	109	0	0	0	0	0	0	0	5	13	27	24	40	0
Malignant neoplasms of female genital organs, (C51-C58)	83	0	0	0	0	0	0	0	2	4	22	25	30	0
Malignant neoplasms of urinary tract (C64-C68)	28	0	0	0	0	0	0	0	0	2	2	2	22	0
Malignant neoplasms of meninges, brain, and other parts of central nervous system (C70-C72)	17	0	0	0	0	1	0	0	0	1	12	1	2	0
Malignant neoplasms of lymphoid, hematopoietic, and related tissues (C81-C96)	66	0	1	0	0	0	0	0	1	1	12	12	39	0
All other and unspecified malignant neoplasms (C40-C49, C69, C73-C80, C97)	67	0	0	0	0	0	0	1	1	6	10	15	34	0
<b>Cerebrovascular diseases (I60-I69)</b>	219	0	0	0	0	0	0	1	0	5	13	20	180	0

TABLE F-21 (continued)  
(2014 - White Females)

	Age of Decedent													
	Total	< 1	1-4	5-9	10-14	15-19	20-24	25-34	35-44	45-54	55-64	65-74	75+	Unk
<b>Chronic lower respiratory diseases (J40-J47)</b>	218	0	0	0	0	0	0	0	1	5	19	42	151	0
<b>Accidents (unintentional injuries) (V01-X59, Y85-Y86)</b>	135	0	1	0	1	5	7	18	14	21	12	10	46	0
Motor Vehicle Accidents (V02-V04, V09.0, V09.2, V12-V14, V19.0-V19.2, V19.4-V19.6, V20-V79, V80.3-V80.5, V81.0-V81.1, V82.0-V82.1, V83-V86, V87.0-V87.8, V88.0-V88.8, V89.0, V89.2)	31	0	0	0	1	1	4	3	3	4	2	5	8	0
Nontransport Accidents (W00-X59, Y86)	104	0	1	0	0	4	3	15	11	17	10	5	38	0
<b>Diabetes mellitus (E10-E14)</b>	69	0	0	0	0	0	0	1	1	9	8	13	37	0
<b>Influenza and pneumonia (J10-J18)</b>	72	0	0	0	0	0	0	2	0	0	2	9	59	0
<b>Alzheimer's disease (G30)</b>	113	0	0	0	0	0	0	0	0	0	0	6	107	0
<b>Nephritis, nephrotic syndrome, and nephrosis (N00-N07, N17-N19, N25-N27)</b>	56	0	0	0	0	0	0	0	1	0	5	16	34	0
<b>Septicemia (A40-A41)</b>	57	0	0	0	0	0	0	1	2	1	4	10	39	0
<b>Intentional self-harm (suicide) (X60-X84, Y87.0)</b>	24	0	0	0	0	1	2	5	4	4	4	1	3	0
<b>Chronic liver disease and cirrhosis (K70, K73-K74)</b>	37	0	0	0	0	0	0	0	1	6	12	7	11	0
<b>Essential hypertension and hypertensive renal disease (I10, I12)</b>	20	0	0	0	0	0	0	0	0	0	2	0	18	0
<b>Aortic aneurysm and dissection (I71)</b>	7	0	0	0	0	0	0	0	0	0	1	1	5	0
<b>Assault (homicide) (X85-Y09, Y87.1)</b>	4	0	1	0	0	0	1	0	0	1	1	0	0	0
<b>Human immunodeficiency virus (HIV) (B20-B24)</b>	1	0	0	0	0	0	0	0	0	1	0	0	0	0
<b>Certain conditions originating in the perinatal period (P00-P96)</b>	8	8	0	0	0	0	0	0	0	0	0	0	0	0
<b>Congenital malformations, deformations, and chromosomal abnormalities (Q00-Q99)</b>	8	4	0	0	0	0	0	0	0	1	1	2	0	0
<b>All other causes</b>	745	7	0	0	0	0	2	4	7	20	60	90	555	0
<b>TOTAL</b>	3278	19	4	0	1	7	12	34	50	138	339	534	2140	0

Note: \*ICD Codes, Tenth Revision.

LCDAGEWF

Source: Delaware Health and Social Services, Division of Public Health, Delaware Health Statistics Center

TABLE F-22  
NUMBER OF DEATHS BY AGE FOR SELECTED LEADING CAUSES OF DEATH  
DELAWARE, 2014  
**(BLACK, BOTH SEXES)**

Cause of Death*	Age of Decedent													
	Total	< 1	1-4	5-9	10-14	15-19	20-24	25-34	35-44	45-54	55-64	65-74	75+	Unk
<b>Diseases of the heart (I00-I09, I11, I13, I20-I51)</b>	320	0	0	0	1	2	0	4	13	36	49	78	137	0
Acute rheumatic fever and chronic rheumatic heart disease (I00-I09)	0	0	0	0	0	0	0	0	0	0	0	0	0	0
Hypertensive heart disease (I11)	21	0	0	0	0	0	0	0	2	8	1	4	6	0
Hypertensive heart and renal disease (I13)	9	0	0	0	0	0	0	0	0	2	2	2	3	0
Ischemic heart disease (I20-I25)	188	0	0	0	0	0	0	0	3	18	31	52	84	0
All other forms of heart disease (I26-I51)	102	0	0	0	1	2	0	4	8	8	15	20	44	0
<b>Malignant neoplasms (C00-C97)</b>	334	0	1	0	0	1	2	1	7	35	90	90	107	0
Malignant neoplasms of lip, oral cavity and pharynx (C00-C14)	8	0	0	0	0	0	0	0	0	1	2	4	1	0
Malignant neoplasms of digestive organs (C15-C26)	94	0	0	0	0	0	0	0	5	10	28	25	26	0
Malignant neoplasms of respiratory and intrathoracic organs (C30-C39)	84	0	0	0	0	1	0	1	0	5	22	24	31	0
Malignant neoplasms of breast (C50)	24	0	0	0	0	0	0	0	1	5	8	3	7	0
Malignant neoplasms of female genital organs, (C51-C58)	23	0	0	0	0	0	0	0	0	2	8	5	8	0
Malignant neoplasms of male genital organs, (C60-C63)	24	0	0	0	0	0	0	0	0	0	5	5	14	0
Malignant neoplasms of urinary tract (C64-C68)	8	0	0	0	0	0	0	0	0	1	3	3	1	0
Malignant neoplasms of meninges, brain, and other parts of central nervous system (C70-C72)	3	0	1	0	0	0	0	0	1	1	0	0	0	0
Malignant neoplasms of lymphoid, hematopoietic, and related tissues (C81-C96)	39	0	0	0	0	0	1	0	0	5	5	16	12	0
All other and unspecified malignant neoplasms (C40-C49, C69, C73-C80,C97)	27	0	0	0	0	0	1	0	0	5	9	5	7	0
<b>Cerebrovascular diseases (I60-I69)</b>	73	0	0	0	0	0	1	0	1	5	8	19	39	0

TABLE F-22 (continued)  
(2014 - Black, Both Sexes)

	Age of Decedent													
	Total	< 1	1-4	5-9	10-14	15-19	20-24	25-34	35-44	45-54	55-64	65-74	75+	Unk
<b>Chronic lower respiratory diseases (J40-J47)</b>	46	0	0	0	0	0	1	0	2	3	4	16	20	0
<b>Accidents (unintentional injuries) (V01-X59, Y85-Y86)</b>	64	0	2	0	1	4	3	13	12	7	11	5	6	0
Motor Vehicle Accidents (V02-V04, (V09.0,V09.2,V12-V14, V19.0-V19.2, V19.4-V19.6,V20-V79, V80.3-V80.5, V81.0-V81.1, V82.0-V82.1, V83-V86, V87.0-V87.8, V88.0-V88.8,V89.0,V89.2)	22	0	0	0	1	0	3	7	2	4	5	0	0	0
Nontransport Accidents (W00-X59, Y86)	42	0	2	0	0	4	0	6	10	3	6	5	6	0
<b>Diabetes mellitus (E10-E14)</b>	62	0	0	0	0	0	0	0	4	11	12	11	24	0
<b>Influenza and pneumonia (J10-J18)</b>	23	1	0	0	0	0	0	1	0	4	2	2	13	0
<b>Alzheimer's disease (G30)</b>	23	0	0	0	0	0	0	0	0	0	0	0	23	0
<b>Nephritis, nephrotic syndrome, and nephrosis (N00-N07, N17-N19, N25-N27)</b>	53	0	0	0	0	0	0	0	1	4	12	9	27	0
<b>Septicemia (A40-A41)</b>	21	0	0	0	0	0	0	0	0	3	2	6	10	0
<b>Intentional self-harm (suicide) (X60-X84, Y87.0)</b>	6	0	0	0	0	2	1	0	2	1	0	0	0	0
<b>Chronic liver disease and cirrhosis (K70, K73-K74)</b>	12	0	0	0	0	0	0	0	2	4	3	1	2	0
<b>Essential hypertension and hypertensive renal disease (I10, I12)</b>	16	0	0	0	0	0	0	0	1	2	2	3	8	0
<b>Aortic aneurysm and dissection (I71)</b>	6	0	0	0	0	0	0	0	0	2	0	2	2	0
<b>Assault (homicide) (X85-Y09, Y87.1)</b>	43	3	1	0	0	3	8	14	9	3	1	1	0	0
<b>Human immunodeficiency virus (HIV) (B20-B24)</b>	30	0	0	0	0	0	0	4	3	9	9	4	1	0
<b>Certain conditions originating in the perinatal period (P00-P96)</b>	17	17	0	0	0	0	0	0	0	0	0	0	0	0
<b>Congenital malformations, deformations, and chromosomal abnormalities (Q00-Q99)</b>	8	5	0	0	0	0	1	0	0	0	1	1	0	0
<b>All other causes</b>	278	4	0	0	1	0	0	10	7	30	40	44	142	0
<b>TOTAL</b>	1435	30	4	0	3	12	17	47	64	159	246	292	561	0

Note: \*ICD Codes, Tenth Revision.

LCDAGBLK

Source: Delaware Health and Social Services, Division of Public Health, Delaware Health Statistics Center

TABLE F-23  
NUMBER OF DEATHS BY AGE FOR SELECTED LEADING CAUSES OF DEATH  
DELAWARE, 2014  
**(BLACK MALES)**

Cause of Death*	Age of Decedent													
	Total	< 1	1-4	5-9	10-14	15-19	20-24	25-34	35-44	45-54	55-64	65-74	75+	Unk
<b>Diseases of the heart (I00-I09, I11, I13, I20-I51)</b>	155	0	0	0	0	2	0	3	4	23	28	41	54	0
Acute rheumatic fever and chronic rheumatic heart disease (I00-I09)	0	0	0	0	0	0	0	0	0	0	0	0	0	0
Hypertensive heart disease (I11)	13	0	0	0	0	0	0	0	1	7	1	3	1	0
Hypertensive heart and renal disease (I13)	4	0	0	0	0	0	0	0	0	2	2	0	0	0
Ischemic heart disease (I20-I25)	92	0	0	0	0	0	0	0	1	10	15	28	38	0
All other forms of heart disease (I26-I51)	46	0	0	0	0	2	0	3	2	4	10	10	15	0
<b>Malignant neoplasms (C00-C97)</b>	165	0	1	0	0	1	2	1	1	14	43	56	46	0
Malignant neoplasms of lip, oral cavity and pharynx (C00-C14)	8	0	0	0	0	0	0	0	0	1	2	4	1	0
Malignant neoplasms of digestive organs (C15-C26)	41	0	0	0	0	0	0	0	1	5	15	11	9	0
Malignant neoplasms of respiratory and intrathoracic organs (C30-C39)	48	0	0	0	0	1	0	1	0	1	11	18	16	0
Malignant neoplasms of breast (C50)	0	0	0	0	0	0	0	0	0	0	0	0	0	0
Malignant neoplasms of male genital organs, (C60-C63)	24	0	0	0	0	0	0	0	0	0	5	5	14	0
Malignant neoplasms of urinary tract (C64-C68)	4	0	0	0	0	0	0	0	0	1	1	2	0	0
Malignant neoplasms of meninges, brain, and other parts of central nervous system (C70-C72)	1	0	1	0	0	0	0	0	0	0	0	0	0	0
Malignant neoplasms of lymphoid, hematopoietic, and related tissues (C81-C96)	26	0	0	0	0	0	1	0	0	4	4	12	5	0
All other and unspecified malignant neoplasms (C40-C49, C69, C73-C80, C97)	13	0	0	0	0	0	1	0	0	2	5	4	1	0
<b>Cerebrovascular diseases (I60-I69)</b>	34	0	0	0	0	0	0	0	1	2	4	12	15	0

TABLE F-23 (continued)  
(2014 - Black Males)

	Age of Decedent													
	Total	< 1	1-4	5-9	10-14	15-19	20-24	25-34	35-44	45-54	55-64	65-74	75+	Unk
<b>Chronic lower respiratory diseases (J40-J47)</b>	20	0	0	0	0	0	1	0	1	1	2	6	9	0
<b>Accidents (unintentional injuries) (V01-X59, Y85-Y86)</b>	42	0	1	0	0	4	2	10	9	4	6	4	2	0
Motor Vehicle Accidents (V02-V04, (V09.0,V09.2,V12-V14, V19.0-V19.2, V19.4-V19.6,V20-V79, V80.3-V80.5, V81.0-V81.1, V82.0-V82.1, V83-V86, V87.0-V87.8, V88.0-V88.8,V89.0,V89.2)	14	0	0	0	0	0	2	5	2	2	3	0	0	0
Nontransport Accidents (W00-X59, Y86)	28	0	1	0	0	4	0	5	7	2	3	4	2	0
<b>Diabetes mellitus (E10-E14)</b>	34	0	0	0	0	0	0	0	1	8	7	6	12	0
<b>Influenza and pneumonia (J10-J18)</b>	7	0	0	0	0	0	0	0	0	1	0	1	5	0
<b>Alzheimer's disease (G30)</b>	5	0	0	0	0	0	0	0	0	0	0	0	5	0
<b>Nephritis, nephrotic syndrome, and nephrosis (N00-N07, N17-N19, N25-N27)</b>	26	0	0	0	0	0	0	0	0	2	7	3	14	0
<b>Septicemia (A40-A41)</b>	11	0	0	0	0	0	0	0	0	1	1	4	5	0
<b>Intentional self-harm (suicide) (X60-X84, Y87.0)</b>	4	0	0	0	0	1	0	0	2	1	0	0	0	0
<b>Chronic liver disease and cirrhosis (K70, K73-K74)</b>	6	0	0	0	0	0	0	0	2	2	0	1	1	0
<b>Essential hypertension and hypertensive renal disease (I10, I12)</b>	7	0	0	0	0	0	0	0	0	1	0	2	4	0
<b>Aortic aneurysm and dissection (I71)</b>	4	0	0	0	0	0	0	0	0	2	0	2	0	0
<b>Assault (homicide) (X85-Y09, Y87.1)</b>	38	2	0	0	0	3	8	13	8	2	1	1	0	0
<b>Human immunodeficiency virus (HIV) (B20-B24)</b>	17	0	0	0	0	0	0	3	1	6	5	1	1	0
<b>Certain conditions originating in the perinatal period (P00-P96)</b>	7	7	0	0	0	0	0	0	0	0	0	0	0	0
<b>Congenital malformations, deformations, and chromosomal abnormalities (Q00-Q99)</b>	3	2	0	0	0	0	1	0	0	0	0	0	0	0
<b>All other causes</b>	133	2	0	0	1	0	0	5	2	18	22	26	57	0
<b>TOTAL</b>	718	13	2	0	1	11	14	35	32	88	126	166	230	0

Note: \*ICD Codes, Tenth Revision.

LCDAGEBM

Source: Delaware Health and Social Services, Division of Public Health, Delaware Health Statistics Center

TABLE F-24  
NUMBER OF DEATHS BY AGE FOR SELECTED LEADING CAUSES OF DEATH  
DELAWARE, 2014  
**(BLACK FEMALES)**

Cause of Death*	Age of Decedent													
	Total	< 1	1-4	5-9	10-14	15-19	20-24	25-34	35-44	45-54	55-64	65-74	75+	Unk
<b>Diseases of the heart (I00-I09, I11, I13, I20-I51)</b>	165	0	0	0	1	0	0	1	9	13	21	37	83	0
Acute rheumatic fever and chronic rheumatic heart disease (I00-I09)	0	0	0	0	0	0	0	0	0	0	0	0	0	0
Hypertensive heart disease (I11)	8	0	0	0	0	0	0	0	1	1	0	1	5	0
Hypertensive heart and renal disease (I13)	5	0	0	0	0	0	0	0	0	0	0	2	3	0
Ischemic heart disease (I20-I25)	96	0	0	0	0	0	0	0	2	8	16	24	46	0
All other forms of heart disease (I26-I51)	56	0	0	0	1	0	0	1	6	4	5	10	29	0
<b>Malignant neoplasms (C00-C97)</b>	169	0	0	0	0	0	0	0	6	21	47	34	61	0
Malignant neoplasms of lip, oral cavity and pharynx (C00-C14)	0	0	0	0	0	0	0	0	0	0	0	0	0	0
Malignant neoplasms of digestive organs (C15-C26)	53	0	0	0	0	0	0	0	4	5	13	14	17	0
Malignant neoplasms of respiratory and intrathoracic organs (C30-C39)	36	0	0	0	0	0	0	0	0	4	11	6	15	0
Malignant neoplasms of breast (C50)	24	0	0	0	0	0	0	0	1	5	8	3	7	0
Malignant neoplasms of female genital organs, (C51-C58)	23	0	0	0	0	0	0	0	0	2	8	5	8	0
Malignant neoplasms of urinary tract (C64-C68)	4	0	0	0	0	0	0	0	0	0	2	1	1	0
Malignant neoplasms of meninges, brain, and other parts of central nervous system (C70-C72)	2	0	0	0	0	0	0	0	1	1	0	0	0	0
Malignant neoplasms of lymphoid, hematopoietic, and related tissues (C81-C96)	13	0	0	0	0	0	0	0	0	1	1	4	7	0
All other and unspecified malignant neoplasms (C40-C49, C69, C73-C80, C97)	14	0	0	0	0	0	0	0	0	3	4	1	6	0
<b>Cerebrovascular diseases (I60-I69)</b>	39	0	0	0	0	0	1	0	0	3	4	7	24	0

TABLE F-24 (continued)  
(2014 - Black Females)

	Age of Decedent													
	Total	< 1	1-4	5-9	10-14	15-19	20-24	25-34	35-44	45-54	55-64	65-74	75+	Unk
<b>Chronic lower respiratory diseases (J40-J47)</b>	26	0	0	0	0	0	0	0	1	2	2	10	11	0
<b>Accidents (unintentional injuries) (V01-X59, Y85-Y86)</b>	22	0	1	0	1	0	1	3	3	3	5	1	4	0
Motor Vehicle Accidents (V02-V04, V09.0-V09.2, V12-V14, V19.0-V19.2, V19.4-V19.6, V20-V79, V80.3-V80.5, V81.0-V81.1, V82.0-V82.1, V83-V86, V87.0-V87.8, V88.0-V88.8, V89.0, V89.2)	8	0	0	0	1	0	1	2	0	2	2	0	0	0
Nontransport Accidents (W00-X59, Y86)	14	0	1	0	0	0	0	1	3	1	3	1	4	0
<b>Diabetes mellitus (E10-E14)</b>	28	0	0	0	0	0	0	0	3	3	5	5	12	0
<b>Influenza and pneumonia (J10-J18)</b>	16	1	0	0	0	0	0	1	0	3	2	1	8	0
<b>Alzheimer's disease (G30)</b>	18	0	0	0	0	0	0	0	0	0	0	0	18	0
<b>Nephritis, nephrotic syndrome, and nephrosis (N00-N07, N17-N19, N25-N27)</b>	27	0	0	0	0	0	0	0	1	2	5	6	13	0
<b>Septicemia (A40-A41)</b>	10	0	0	0	0	0	0	0	0	2	1	2	5	0
<b>Intentional self-harm (suicide) (X60-X84, Y87.0)</b>	2	0	0	0	0	1	1	0	0	0	0	0	0	0
<b>Chronic liver disease and cirrhosis (K70, K73-K74)</b>	6	0	0	0	0	0	0	0	0	2	3	0	1	0
<b>Essential hypertension and hypertensive renal disease (I10, I12)</b>	9	0	0	0	0	0	0	0	1	1	2	1	4	0
<b>Aortic aneurysm and dissection (I71)</b>	2	0	0	0	0	0	0	0	0	0	0	0	2	0
<b>Assault (homicide) (X85-Y09, Y87.1)</b>	5	1	1	0	0	0	0	1	1	1	0	0	0	0
<b>Human immunodeficiency virus (HIV) (B20-B24)</b>	13	0	0	0	0	0	0	1	2	3	4	3	0	0
<b>Certain conditions originating in the perinatal period (P00-P96)</b>	10	10	0	0	0	0	0	0	0	0	0	0	0	0
<b>Congenital malformations, deformations, and chromosomal abnormalities (Q00-Q99)</b>	5	3	0	0	0	0	0	0	0	0	1	1	0	0
<b>All other causes</b>	145	2	0	0	0	0	0	5	5	12	18	18	85	0
<b>TOTAL</b>	717	17	2	0	2	1	3	12	32	71	120	126	331	0

Note: \*ICD Codes, Tenth Revision.

LCDAGEBF

Source: Delaware Health and Social Services, Division of Public Health, Delaware Health Statistics Center



TABLE F-25  
HIV INFECTION/AIDS<sup>1</sup> DEATHS BY COUNTY, RACE, HISPANIC<sup>2</sup> ORIGIN AND SEX

U.S., DELAWARE, AND COUNTIES, 2000-2014

Area/ Race	2000	2001	2002	2003	2004	2005	2006	2007	2008	2009	2010	2011	2012	2013	2014
<b>Delaware</b>	68	67	70	80	58	63	53	55	58	41	46	36	36	36	38
Males	46	47	51	58	36	43	33	33	27	27	33	28	24	28	24
White	11	10	14	18	7	8	9	13	11	5	7	7	5	8	7
Black	35	37	37	40	29	35	24	20	16	22	26	21	19	20	17
Females	22	20	19	22	22	20	20	22	31	14	13	8	12	8	14
White	2	1	6	3	6	2	1	1	6	2	4	0	3	0	1
Black	20	19	13	19	16	18	19	21	25	12	9	8	9	7	13
<b>Kent</b>	4	9	4	8	8	5	11	9	8	5	10	5	8	4	4
Males	0	5	4	7	5	2	7	5	2	5	6	5	6	4	2
White	0	2	0	2	2	0	1	2	1	2	2	2	2	1	0
Black	0	3	4	5	3	2	6	3	1	3	4	3	4	3	2
Females	4	4	0	1	3	3	4	4	6	0	4	0	2	0	2
White	2	0	0	1	0	0	0	0	1	0	0	0	0	0	0
Black	2	4	0	0	3	3	4	4	5	0	4	0	2	0	2
<b>New Castle</b>	54	52	56	69	46	51	34	39	42	34	31	25	27	27	27
Males	37	38	40	49	29	35	19	21	17	21	23	18	17	19	18
White	6	6	9	15	4	6	5	6	4	2	2	4	3	4	6
Black	31	32	31	34	25	29	14	15	13	19	21	14	14	15	12
Females	17	14	16	20	17	16	15	18	25	13	8	7	10	8	9
White	0	1	4	2	5	2	1	1	5	1	4	0	3	0	1
Black	17	13	12	18	12	14	14	17	20	12	4	7	7	7	8
Wilmington	35	37	28	43	25	33	19	22	29	27	19	15	15	18	21
Males	25	28	22	30	15	21	7	10	13	16	16	9	9	13	16
White	4	3	4	5	0	2	0	0	1	1	0	0	2	1	4
Black	21	25	18	25	15	19	7	10	12	15	16	9	7	12	12
Females	10	9	6	13	10	12	12	12	16	11	3	6	6	5	5
White	0	1	0	0	1	1	1	1	3	1	1	0	0	0	0
Black	10	8	6	13	9	11	11	11	13	10	2	6	6	4	5
Bal of NCCo	19	15	28	26	21	18	15	17	13	7	12	10	12	9	6
Males	12	10	18	19	14	14	12	11	4	5	7	9	8	6	2
White	2	3	5	10	4	4	5	6	3	1	2	4	1	3	2
Black	10	7	13	9	10	10	7	5	1	4	5	5	7	3	0
Females	7	5	10	7	7	4	3	6	9	2	5	1	4	3	4
White	0	0	4	2	4	1	0	0	2	0	3	0	3	0	1
Black	7	5	6	5	3	3	3	6	7	2	2	1	1	3	3
<b>Sussex</b>	10	6	10	3	4	7	8	7	8	2	5	6	1	5	7
Males	9	4	7	2	2	6	7	7	8	1	4	5	1	5	4
White	5	2	5	1	1	2	3	5	6	1	3	1	0	3	1
Black	4	2	2	1	1	4	4	2	2	0	1	4	1	2	3
Females	1	2	3	1	2	1	1	0	0	1	1	1	0	0	3
White	0	0	2	0	1	0	0	0	0	1	0	0	0	0	0
Black	1	2	1	1	1	1	1	0	0	0	1	1	0	0	3
<b>Hispanic</b>	1	3	4	2	1	2	1	1	1	1	1	2	0	1	0
Males	1	2	4	1	0	2	0	0	1	1	1	2	0	0	0
Females	0	1	0	1	1	0	1	1	0	0	0	0	0	1	0

**Notes:**

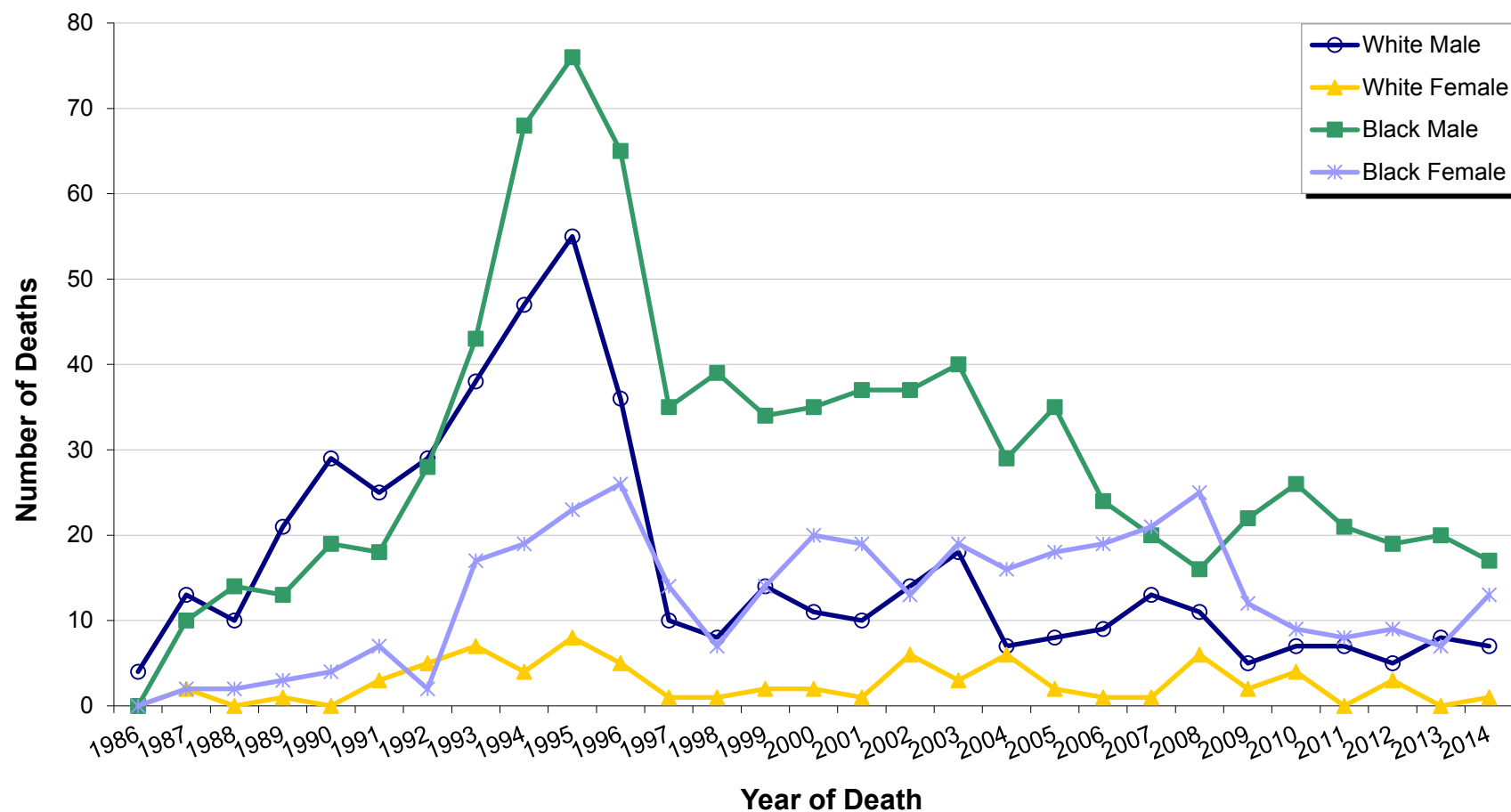
1. See Table F-12 for ICD-9 and ICD-10 Codes.
2. People of Hispanic origin may be of any race. See Hispanic Origin in the Technical Notes.

AIDS

**Sources:**

Delaware Health and Social Services, Division of Public Health, Delaware Health Statistics Center  
National Center for Health Statistics

**Figure F-3**  
**Number of HIV Deaths by Race and Sex**  
**Delaware, 1986-2014**



Source: Delaware Health and Social Services, Division of Public Health, Delaware Health Statistics Center

TABLE F-26  
NUMBER AND PERCENT OF DEATHS BY METHOD OF DISPOSITION AND RACE  
DELAWARE, COUNTIES AND CITY OF WILMINGTON, 2014

Area/ Method of Disposition	Race							
	All Races		White		Black		Other	
	Number	Percent	Number	Percent	Number	Percent	Number	Percent
<b>Delaware</b>	8252	100.0	6677	100.0	1435	100.0	140	100.0
Burial	4041	49.0	3033	45.4	948	66.1	60	42.9
Cremation	3799	46.0	3275	49.0	452	31.5	72	51.4
Donation	96	1.2	93	1.4	2	0.1	1	0.7
Entombment	153	1.9	148	2.2	3	0.2	2	1.4
Removal from State	154	1.9	121	1.8	28	2.0	5	3.6
Unknown	9	0.1	7	0.1	2	0.1	0	0.0
<b>Kent</b>	1524	100.0	1196	100.0	299	100.0	29	100.0
Burial	773	50.7	556	46.5	203	67.9	14	48.3
Cremation	699	45.9	600	50.2	86	28.8	13	44.8
Donation	13	0.9	12	1.0	0	0.0	1	3.4
Entombment	4	0.3	4	0.3	0	0.0	0	0.0
Removal from State	33	2.2	22	1.8	10	3.3	1	3.4
Unknown	2	0.1	2	0.2	0	0.0	0	0.0
<b>New Castle</b>	4334	100.0	3354	100.0	901	100.0	79	100.0
Burial	2186	50.4	1577	47.0	580	64.4	29	36.7
Cremation	1882	43.4	1536	45.8	299	33.2	47	59.5
Donation	46	1.1	44	1.3	2	0.2	0	0.0
Entombment	125	2.9	122	3.6	3	0.3	0	0.0
Removal from State	90	2.1	72	2.1	15	1.7	3	3.8
Unknown	5	0.1	3	0.1	2	0.2	0	0.0
Wilmington	729	100.0	326	100.0	395	100.0	8	100.0
Burial	406	55.7	148	45.4	255	64.6	3	37.5
Cremation	283	38.8	148	45.4	130	32.9	5	62.5
Donation	3	0.4	2	0.6	1	0.3	0	0.0
Entombment	21	2.9	18	5.5	3	0.8	0	0.0
Removal from State	15	2.1	10	3.1	5	1.3	0	0.0
Unknown	1	0.1	0	0.0	1	0.3	0	0.0
Balance of NC County	3605	100.0	3028	100.0	506	100.0	71	100.0
Burial	1780	49.4	1429	47.2	325	64.2	26	36.6
Cremation	1599	44.4	1388	45.8	169	33.4	42	59.2
Donation	43	1.2	42	1.4	1	0.2	0	0.0
Entombment	104	2.9	104	3.4	0	0.0	0	0.0
Removal from State	75	2.1	62	2.0	10	2.0	3	4.2
Unknown	4	0.1	3	0.1	1	0.2	0	0.0
<b>Sussex</b>	2394	100.0	2127	100.0	235	100.0	32	100.0
Burial	1082	45.2	900	42.3	165	70.2	17	53.1
Cremation	1218	50.9	1139	53.5	67	28.5	12	37.5
Donation	37	1.5	37	1.7	0	0.0	0	0.0
Entombment	24	1.0	22	1.0	0	0.0	2	6.3
Removal from State	31	1.3	27	1.3	3	1.3	1	3.1
Unknown	2	0.1	2	0.1	0	0.0	0	0.0

**Note:** Percentages are calculated based upon the total number of deaths in each race category.

DISPRACE

**Source:** Delaware Health and Social Services, Division of Public Health, Delaware Health Statistics Center

TABLE F-27  
LIFE EXPECTANCY AT BIRTH\* BY RACE AND SEX

DELAWARE, 1994-2014

Year	Race and Sex								
	All Races			White			Black		
	Both Sexes	Male	Female	Both Sexes	Male	Female	Both Sexes	Male	Female
2014	79.6	76.9	82.1	79.8	77.1	82.5	76.7	73.8	79.4
2013	78.9	76.2	81.5	79.3	76.7	81.8	76.8	73.5	79.7
2012	79.5	77.0	81.8	79.7	77.3	81.9	77.8	74.3	81.1
2011	79.1	76.6	81.5	79.4	77.0	81.6	77.3	73.7	80.6
2010	79.1	76.4	81.7	79.4	76.9	81.7	76.7	72.5	80.7
2009	78.9	76.3	81.4	79.6	77.1	82.1	76.0	72.7	79.0
2008	78.3	75.7	80.8	78.9	76.3	81.4	75.7	72.7	78.4
2007	78.8	76.0	81.5	79.2	76.5	81.9	76.2	72.9	79.3
2006	78.4	75.7	81.0	79.1	76.4	81.7	74.8	71.4	77.8
2005	77.7	75.0	80.2	78.4	75.7	81.0	74.1	71.3	76.6
2004	77.8	74.9	80.5	78.3	75.5	80.9	73.8	70.4	77.0
2003	76.9	74.5	80.0	78.1	75.3	80.7	72.6	69.2	75.8
2002	77.3	74.6	79.8	77.8	75.4	80.1	73.8	69.5	77.9
2001	76.3	73.9	78.7	77.1	74.6	79.5	72.1	69.5	74.4
2000	76.5	73.9	79.0	77.1	74.5	79.6	72.5	69.4	75.5
1999	76.8	73.9	79.6	77.6	74.7	80.3	72.6	68.8	76.2
1998	75.9	73.3	78.4	77.0	74.5	79.4	70.3	66.9	73.5
1997	75.8	73.3	78.2	76.7	74.2	79.1	71.0	68.3	73.5
1996	75.4	72.5	78.1	76.7	73.9	79.4	68.8	65.2	72.2
1995	75.5	72.5	78.4	76.8	74.2	79.4	68.9	64.4	73.5
1994	75.1	71.4	78.7	76.1	72.6	79.6	69.5	65.0	74.1

Note: \*Life expectancy at birth is the average expected lifetime of people born in the listed year. LIFE\_TB1

Source: Delaware Health and Social Services, Division of Public Health, Delaware Health Statistics Center

TABLE F-28  
AVERAGE REMAINING YEARS OF LIFE\* BY AGE, RACE, AND SEX

DELAWARE, 2014

Age Group	Race and Sex								
	All Races			White			Black		
	Both Sexes	Male	Female	Both Sexes	Male	Female	Both Sexes	Male	Female
0-5	79.6	76.9	82.1	79.8	77.1	82.5	76.7	73.8	79.4
5-10	75.1	72.4	77.8	75.3	72.5	78.0	72.5	69.4	75.2
10-15	70.1	67.4	72.8	70.3	67.5	73.0	67.5	64.4	70.2
15-20	65.2	62.5	67.8	65.3	62.6	68.0	62.6	59.5	65.3
20-25	60.3	57.7	62.9	60.5	57.7	63.1	57.8	54.9	60.4
25-30	55.6	53.1	58.1	55.8	53.1	58.3	53.1	50.3	55.5
30-35	51.0	48.5	53.3	51.1	48.6	53.5	48.5	45.9	50.7
35-40	46.3	44.0	48.5	46.5	44.0	48.8	43.8	41.3	45.9
40-45	41.7	39.4	43.8	41.9	39.5	44.1	39.2	36.8	41.2
45-50	37.1	34.9	39.1	37.3	35.1	39.4	34.7	32.3	36.8
50-55	32.7	30.6	34.6	32.9	30.8	34.9	30.4	28.1	32.3
55-60	28.4	26.4	30.2	28.5	26.6	30.4	26.4	24.2	28.3
60-65	24.4	22.5	26.1	24.6	22.7	26.2	22.4	20.2	24.2
65-70	20.6	18.8	22.1	20.7	18.9	22.2	19.0	16.8	20.7
70-75	17.1	15.5	18.4	17.2	15.6	18.5	15.7	13.8	17.1
75-80	13.8	12.3	15.0	13.8	12.3	15.0	13.0	11.3	14.1
80-85	11.1	9.8	12.0	11.0	9.8	11.9	10.9	9.4	11.7
85+	8.9	7.7	9.6	8.7	7.6	9.4	9.3	7.8	10.1

Note: \*Average number of years of life remaining at the beginning of the age interval. LIFE\_TB2

Source: Delaware Health and Social Services, Division of Public Health, Delaware Health Statistics Center

TABLE F-29  
MATERNAL DEATHS

DELAWARE AND COUNTIES, 1986-2014

Year	Area			
	Delaware	Kent	New Castle	Sussex
2014	1	0	1	0
2013	0	0	0	0
2012	2	0	0	2
2011	1	0	0	1
2010	2	0	0	2
2009	4	1	3	0
2008	3	1	2	0
2007	1	0	1	0
2006	1	0	1	0
2005	3	0	3	0
2004	1	0	1	0
2003	2	0	2	0
2002	0	0	0	0
2001	2	0	1	1
2000	3	1	2	0
1999	1	0	1	0
1998	2	0	2	0
1997	1	0	1	0
1996	0	0	0	0
1995	0	0	0	0
1994	0	0	0	0
1993	0	0	0	0
1992	0	0	0	0
1991	1	0	0	1
1990	0	0	0	0
1989	2	0	1	1

**Note:** Prior to 1999, maternal deaths included ICD-9 categories 630-676. For 1999 and later, maternal deaths include ICD-10 categories O00-O95, O98-O99, and A34. MATERNAL

**Source:** Delaware Health and Social Services, Division of Public Health, Delaware Health Statistics Center

TABLE F-30  
 FIVE-YEAR AGE-ADJUSTED MORTALITY RATES FOR SELECTED CAUSES OF DEATH  
 DELAWARE AND COUNTIES, 2010-2014

LEADING CAUSES OF DEATH	AREA				RACE	
	DE	Kent	NCC	Sussex	White	Black
Malignant neoplasms	172.2	199.5	172.7	158.5	171.1	195.8
Diseases of the heart	160.3	200.2	153.9	153.7	157.8	185.5
Chronic lower respiratory diseases	40.4	49.3	39.9	37.5	42.6	32.8
Cerebrovascular diseases	36.3	38.4	41.8	27.1	34.5	46.2
Dementia	38.0	40.9	45.1	26.2	38.1	41.9
Accidents (unintentional injuries)	39.5	42.9	37.5	44.0	45.1	27.7
Diabetes mellitus	19.9	21.4	21.0	16.9	16.7	39.5
Alzheimer's disease	17.1	20.4	16.6	16.4	16.9	19.6
Nephritis, nephrotic syndrome, and nephrosis	14.1	16.0	15.4	11.1	12.2	26.0
Influenza and pneumonia	12.0	14.4	13.2	9.1	12.0	13.0
Septicemia	11.4	17.8	11.0	8.8	11.0	14.7
Intentional self-harm (suicide)	12.3	14.0	11.5	13.2	15.4	4.2
Other diseases of respiratory system	9.3	11.9	9.9	7.0	9.7	8.4
Chronic liver disease and cirrhosis	8.2	8.6	7.1	10.5	8.9	6.3
Certain conditions originating in the perinatal period	5.5	4.1	6.9	2.9	3.0	10.7
Assault (homicide)	6.4	4.6	8.1	3.2	3.0	16.7
Parkinson's disease	6.6	5.4	7.5	5.7	7.2	NA
Human immunodeficiency virus (HIV)	3.8	3.5	4.6	2.3	1.2	15.1
Essential hypertension and hypertensive renal disease	4.7	7.6	4.3	3.9	4.2	7.4
Pneumonitis due to solids and liquids	4.2	3.9	4.5	4.0	4.2	4.6
Aortic aneurysm and dissection	3.0	4.5	2.8	2.4	3.0	3.4
Congenital malformations, deformations, and chromosomal abnormalities	2.9	2.9	2.7	3.2	3.1	2.4

AADR

**Notes:**

1. Rates per 100,000, adjusted to U.S. 2000 population.
2. See Appendix E for ICD-10 cause of death codes.
3. "NA" indicates rate does not meet standards of reliability or precision; based on fewer than 20 deaths in the numerator.

Source: Delaware Health and Social Services, Division of Public Health, Delaware Health Statistics Center

TABLE F-31  
 FIVE-YEAR AGE-ADJUSTED MORTALITY RATES FOR SELECTED LEADING CAUSES OF DEATH  
 DELAWARE AND COUNTIES, 1994-2014

Cause of Death/ Area	1994 -1998	1995 -1999	1996 -2000	1997 -2001	1998 -2002	1999 -2003	2000 -2004	2001 -2005	2002 -2006	2003 -2007	2004 -2008	2005 -2009	2006 -2010	2007 -2011	2008 -2012	2009 -2013	2010 -2014
<b>Diseases of the heart</b>																	
Delaware	292.1	283.6	275.1	267.4	257.5	252.3	244.2	236.7	223.9	215.1	201.7	190.0	178.8	172.6	165.6	162.7	160.3
Kent	317.0	313.5	308.3	304.4	296.9	291.0	279.6	275.3	267.2	262.7	251.6	243.1	233.7	223.9	211.3	207.1	200.2
New Castle	287.7	276.5	267.1	259.7	250.9	246.2	240.3	233.5	220.1	211.3	196.1	182.9	171.0	165.4	158.3	156.0	153.9
Sussex	290.6	284.5	276.3	265.3	251.9	246.4	235.3	224.0	209.7	198.6	187.4	176.6	166.1	160.8	156.7	153.6	153.7
<b>Malignant neoplasms</b>																	
Delaware	231.2	228.2	221.2	218.0	210.9	206.7	202.9	201.3	195.0	193.9	192.0	186.1	183.5	181.4	178.4	173.8	172.2
Kent	222.4	222.5	220.4	221.9	219.0	217.8	211.9	213.8	206.3	208.8	210.6	208.1	206.8	205.9	208.0	199.6	199.5
New Castle	235.2	230.5	223.4	219.9	212.7	206.7	203.2	202.3	195.2	192.8	192.8	187.1	184.2	184.4	181.1	175.8	172.7
Sussex	227.4	223.4	218.0	213.1	203.9	202.0	198.6	194.2	190.6	190.4	183.0	175.0	171.3	164.3	158.9	158.0	158.5
<b>Cerebrovascular diseases</b>																	
Delaware	52.0	50.8	51.8	51.6	51.7	51.0	48.8	45.9	44.1	41.5	39.0	38.9	38.2	37.7	37.2	36.9	36.3
Kent	70.1	69.0	60.6	55.1	55.8	53.8	50.6	49.4	48.4	42.6	39.4	41.2	39.0	36.7	39.0	39.0	38.4
New Castle	49.9	50.0	53.1	53.8	54.0	54.1	52.4	49.4	48.0	47.3	44.6	44.1	43.3	43.4	42.2	42.6	41.8
Sussex	47.1	45.5	44.1	45.0	44.3	42.9	40.6	36.8	34.1	30.0	28.5	28.4	29.0	28.8	28.5	27.3	27.1
<b>Chronic lower respiratory diseases</b>																	
Delaware	40.9	41.4	42.5	41.9	42.2	41.3	40.5	41.0	40.6	39.8	41.4	41.9	41.2	42.2	41.9	41.0	40.4
Kent	52.8	54.0	52.5	49.4	45.1	44.7	45.7	48.9	49.6	51.4	55.5	55.9	54.7	55.7	55.9	50.6	49.3
New Castle	38.2	39.2	41.5	41.8	41.5	40.5	40.0	39.4	39.2	39.2	41.2	41.5	40.9	42.2	41.3	40.5	39.9
Sussex	39.6	38.9	38.7	37.7	41.8	40.6	38.5	40.0	38.8	35.8	35.5	36.0	35.5	36.1	36.2	37.3	37.5
<b>Diabetes mellitus</b>																	
Delaware	28.4	27.9	26.9	26.9	26.4	25.8	25.8	26.0	24.6	24.0	22.8	22.0	20.6	20.7	20.6	20.0	19.9
Kent	32.7	31.2	28.8	27.6	28.3	28.0	27.3	30.6	30.5	29.0	28.6	28.8	26.3	25.2	23.9	23.7	21.4
New Castle	27.5	26.6	26.6	27.3	26.2	25.1	26.1	26.1	24.4	24.4	23.3	22.2	21.1	21.9	21.9	21.1	21.0
Sussex	28.9	28.6	26.6	25.9	26.0	26.2	24.6	23.7	21.8	20.8	18.9	18.0	16.5	16.3	16.6	16.1	16.9
<b>Influenza and pneumonia</b>																	
Delaware	33.1	30.6	30.2	28.7	26.2	22.2	21.1	18.7	16.9	15.0	14.7	13.8	12.9	12.4	12.1	11.9	12.0
Kent	30.3	31.5	36.5	34.1	31.7	27.3	24.9	20.4	19.9	18.1	17.3	16.1	15.0	13.8	14.4	13.8	14.4
New Castle	30.7	28.2	27.5	25.1	23.2	19.2	17.7	15.8	14.4	13.0	13.6	13.6	13.4	13.4	13.2	12.9	13.2
Sussex	40.1	35.1	33.3	34.4	30.2	26.3	26.9	23.9	20.4	17.6	15.5	13.0	11.1	10.2	9.4	9.4	9.1
<b>Alzheimer's disease</b>																	
Delaware	7.8	9.4	11.1	13.2	14.6	16.5	17.0	18.0	18.5	19.2	19.5	18.9	18.9	18.5	18.1	17.3	17.1
Kent	---	---	5.0	8.8	10.1	12.1	12.8	14.1	13.2	15.9	17.9	18.6	20.3	22.7	22.7	22.0	20.4
New Castle	9.7	11.7	13.8	16.0	17.4	18.8	18.1	18.1	18.4	18.6	17.8	17.1	17.0	15.5	15.3	15.7	16.6
Sussex	6.3	6.9	8.2	9.1	10.8	13.7	16.9	19.8	21.4	22.2	23.7	22.4	21.7	21.9	20.8	18.0	16.4
<b>Nephritis, nephrotic syndrome, and nephrosis</b>																	
Delaware	13.3	13.2	13.5	13.6	14.1	14.2	14.5	14.4	14.9	15.3	16.0	16.4	16.5	16.2	15.2	14.6	14.1
Kent	10.2	11.5	12.4	15.3	17.6	18.0	19.9	18.3	16.7	15.8	17.5	16.1	16.5	16.3	15.6	14.5	16.0
New Castle	14.5	14.5	14.2	13.8	13.6	13.4	13.8	14.0	15.0	16.3	17.4	18.0	18.3	18.0	16.6	15.8	15.4
Sussex	11.3	11.5	12.8	12.2	13.7	14.3	13.1	13.0	13.5	13.1	12.4	13.6	13.2	12.8	12.6	12.7	11.1
<b>Septicemia</b>																	
Delaware	12.8	13.5	14.2	14.6	15.1	14.4	15.2	15.6	16.0	16.0	15.9	15.1	14.3	13.4	13.1	12.6	11.9
Kent	11.6	12.0	13.8	14.4	15.7	17.0	18.3	17.7	18.5	18.1	18.2	17.3	18.0	17.4	16.6	17.2	17.8
New Castle	17.3	16.6	17.5	17.5	17.4	17.1	16.6	15.7	14.8	13.9	13.8	13.3	12.0	11.6	10.9	10.9	11.0
Sussex	11.6	10.9	10.8	12.0	12.8	13.0	13.3	12.8	11.4	10.2	9.4	9.2	8.6	8.2	9.0	9.1	8.8

TABLE F-31 (continued)

Cause of Death/ Area	1994 -1998	1995 -1999	1996 -2000	1997 -2001	1998 -2002	1999 -2003	2000 -2004	2001 -2005	2002 -2006	2003 -2007	2004 -2008	2005 -2009	2006 -2010	2007 -2011	2008 -2012	2009 -2013	2010 -2014
<b>Intentional self-harm (suicide)</b>																	
Delaware	11.2	11.2	11.0	11.2	10.7	11.1	11.1	11.0	10.2	10.4	10.6	10.7	11.0	11.3	11.9	12.0	12.3
Kent	11.6	11.4	12.6	12.1	11.7	11.5	10.5	10.1	10.3	9.8	10.3	11.2	11.2	11.3	12.4	13.0	14.0
New Castle	10.2	10.1	9.8	10.3	9.9	10.7	11.0	11.2	10.0	10.4	10.3	10.1	10.2	10.7	11.2	11.3	11.5
Sussex	14.2	14.0	13.3	12.8	12.2	11.8	11.4	10.4	10.8	11.0	11.8	12.1	13.5	13.1	13.5	12.9	13.2
<b>Chronic liver disease and cirrhosis</b>																	
Delaware	9.1	9.2	9.3	9.0	9.4	9.8	9.8	9.5	9.1	8.5	8.0	8.1	8.4	8.5	8.4	8.1	8.2
Kent	10.3	10.0	10.5	10.8	11.4	12.1	11.5	10.7	10.1	9.7	8.7	9.2	9.5	9.9	8.9	8.2	8.6
New Castle	8.7	8.8	9.0	8.3	8.6	9.1	9.5	8.9	8.9	8.0	7.6	7.3	7.6	7.4	7.6	7.2	7.1
Sussex	9.4	9.5	9.0	9.7	10.1	10.5	10.1	10.5	9.3	9.2	8.7	9.0	9.3	10.1	10.0	9.9	10.5
<b>Assault (homicide)</b>																	
Delaware	4.9	4.7	4.2	3.6	3.7	3.5	3.8	4.5	4.9	5.0	5.9	6.1	6.1	6.1	6.5	6.1	6.4
Kent	4.1	3.4	---	---	---	---	---	---	3.0	3.6	4.4	4.0	4.1	3.9	3.9	3.8	4.6
New Castle	5.3	5.3	5.1	4.5	4.6	4.3	4.6	5.3	5.9	6.0	7.1	7.4	7.5	7.4	8.2	7.9	8.1
Sussex	5.0	4.6	2.8	---	---	---	---	3.6	3.3	2.9	3.2	3.6	3.5	3.7	3.6	3.0	3.2
<b>Certain conditions originating in the perinatal period</b>																	
Delaware	5.3	5.8	6.7	7.8	8.3	8.4	8.2	8.2	7.4	7.0	6.8	6.9	6.1	6.1	6.2	5.8	5.5
Kent	5.5	5.6	6.8	7.2	7.9	8.1	8.1	7.9	6.5	5.1	4.9	5.4	4.2	4.7	5.5	4.9	4.1
New Castle	5.1	5.9	6.9	8.2	8.8	9.2	8.7	8.7	8.1	7.8	7.6	7.8	7.1	7.4	7.5	7.4	7.5
Sussex	5.8	5.5	5.8	7.2	6.8	6.0	6.3	6.6	6.1	6.4	6.1	5.8	4.6	3.5	2.7	2.8	2.9
<b>Congenital malformations</b>																	
Delaware	4.1	4.1	3.9	3.7	3.5	3.4	3.4	3.1	3.1	2.8	2.8	2.6	2.9	2.8	2.9	2.9	2.9
Kent	3.6	3.5	3.2	3.3	3.9	3.5	3.4	3.0	3.4	2.8	3.2	2.8	3.4	3.2	3.1	2.8	2.9
New Castle	3.8	3.9	3.9	3.6	3.2	3.1	3.2	3.0	2.9	2.7	2.6	2.5	2.6	2.6	2.9	2.9	2.7
Sussex	5.9	5.5	4.8	4.6	4.0	3.9	3.8	3.7	3.6	3.4	3.0	2.6	3.2	3.0	2.9	3.4	3.2
<b>Human immunodeficiency virus (HIV)</b>																	
Delaware	14.6	12.5	9.9	8.1	8.2	8.8	8.4	8.2	7.7	7.2	6.5	6.0	5.5	5.1	4.6	4.0	3.8
Kent	10.5	9.4	5.9	5.2	4.8	5.2	5.1	5.1	5.2	5.8	5.6	5.1	5.6	4.7	4.3	3.7	3.5
New Castle	17.2	14.9	12.1	9.8	9.9	10.8	10.7	10.4	9.6	8.8	7.7	7.1	6.3	6.0	5.5	4.9	4.6
Sussex	10.0	8.3	5.9	5.2	5.8	5.5	4.3	3.7	3.9	3.5	3.9	3.8	3.4	3.2	2.5	---	2.3
<b>Accidents (unintentional injuries)</b>																	
Delaware	36.4	35.8	36.0	36.9	36.4	36.0	35.8	35.1	35.2	34.7	35.6	35.9	36.8	36.4	37.3	37.8	39.5
Kent	35.2	35.0	37.5	38.9	37.7	37.6	38.3	38.9	40.5	39.5	39.7	38.0	37.5	35.0	37.7	38.7	42.9
New Castle	33.4	33.4	34.0	34.5	34.6	33.7	32.3	31.6	31.8	31.6	32.7	33.2	34.2	34.4	34.9	35.7	37.5
Sussex	48.6	42.2	42.1	44.0	42.1	43.0	46.4	44.1	42.5	42.4	43.9	44.8	46.6	45.9	46.0	44.9	44.0
<b>Essential hypertension and hypertensive renal disease</b>																	
Delaware	4.2	4.2	4.8	5.2	5.7	5.9	6.9	7.2	6.8	6.3	6.0	5.4	5.1	5.0	4.8	5.0	4.7
Kent	5.7	5.2	4.5	5.5	6.3	6.3	7.1	8.9	9.1	7.8	7.8	7.6	7.4	7.3	7.7	8.1	7.6
New Castle	3.5	3.6	4.4	4.9	5.4	5.9	7.2	7.5	7.0	6.9	6.3	5.6	5.1	5.1	4.7	4.6	4.3
Sussex	5.5	5.6	6.1	5.7	5.9	5.6	5.9	5.4	5.0	4.4	4.4	4.1	4.0	3.8	3.7	4.2	3.9
<b>Aortic aneurysm and dissection</b>																	
Delaware	6.7	6.5	6.4	6.6	6.3	6.7	6.3	5.8	5.0	4.5	3.7	3.4	3.2	3.2	3.2	3.1	3.0
Kent	7.7	8.0	9.0	9.3	9.9	10.0	9.3	8.3	7.2	5.5	4.0	3.0	2.8	2.8	3.4	4.3	4.5
New Castle	6.0	5.9	5.8	6.2	5.9	6.3	5.8	5.4	4.5	3.8	3.2	3.2	3.2	3.3	3.5	3.1	2.8
Sussex	7.7	6.6	6.5	6.0	5.4	5.9	6.1	5.7	5.3	5.4	4.7	4.1	3.5	3.2	2.7	2.4	2.4



TABLE F-31 (continued)

Cause of Death/ Area	1994 -1998	1995 -1999	1996 -2000	1997 -2001	1998 -2002	1999 -2003	2000 -2004	2001 -2005	2002 -2006	2003 -2007	2004 -2008	2005 -2009	2006 -2010	2007 -2011	2008 -2012	2009 -2013	2010 -2014
<b>Pneumonitis due to solids and liquids</b>																	
Delaware	5.7	7.0	7.8	8.9	9.1	9.7	8.9	8.2	7.1	6.3	5.4	5.2	4.8	4.6	4.3	4.3	4.2
Kent	---	---	4.8	4.1	5.0	5.9	5.3	5.4	5.0	3.9	3.3	3.4	3.0	3.4	3.5	3.6	3.9
New Castle	6.9	8.3	8.9	10.6	10.5	10.9	9.9	9.2	7.5	6.6	5.5	5.2	4.7	4.6	4.4	4.6	4.5
Sussex	4.2	5.3	7.1	7.7	8.5	9.3	9.1	7.8	7.5	7.1	6.3	6.1	5.8	5.4	4.7	4.2	4.0
<b>Other diseases of respiratory system</b>																	
Delaware	7.9	7.9	8.3	8.4	8.8	8.4	8.7	8.5	8.9	8.8	9.0	8.8	8.8	9.0	9.3	9.2	9.3
Kent	5.5	6.2	9.2	8.9	9.6	9.5	9.5	9.0	10.3	10.6	10.5	10.6	11.3	11.7	12.1	12.2	11.9
New Castle	7.4	7.5	7.8	8.1	8.3	8.2	8.8	8.7	8.7	8.3	9.0	8.7	8.4	9.3	10.2	9.6	9.9
Sussex	10.1	9.3	9.3	8.9	9.4	8.4	8.3	7.6	8.4	8.6	8.3	8.3	8.3	7.2	6.7	7.4	7.0
<b>Parkinson's disease</b>																	
Delaware	3.8	4.0	4.6	5.1	5.5	5.5	5.4	5.7	5.5	5.6	5.6	5.6	5.2	5.7	5.8	6.2	6.6
Kent	---	---	---	4.3	4.6	4.7	4.1	4.7	4.6	4.4	4.4	5.5	5.1	5.2	5.3	5.4	5.4
New Castle	4.3	4.4	5.0	5.5	6.0	5.9	5.9	6.2	6.1	6.4	6.3	6.1	5.6	6.1	6.3	6.9	7.5
Sussex	2.7	3.4	4.1	4.7	5.0	4.9	5.1	5.3	4.7	4.8	5.1	4.9	4.6	5.2	5.5	5.6	5.7
<b>Dementia</b>																	
Delaware	6.4	5.8	6.5	7.2	8.5	9.5	10.6	12.1	16.1	19.8	24.7	30.0	34.4	36.4	38.9	38.4	38.0
Kent	6.9	7.4	8.6	8.8	12.6	13.9	14.6	13.1	14.2	15.3	20.5	26.3	30.3	35.7	40.4	41.7	40.9
New Castle	5.8	5.5	6.3	7.3	8.3	9.2	10.6	13.2	18.8	24.8	31.8	38.6	43.8	45.8	47.5	46.0	45.1
Sussex	7.1	5.9	5.8	5.9	6.7	7.7	8.6	9.7	11.7	12.2	13.4	16.1	19.8	21.1	24.5	25.1	26.2

AADR\_TRND(2)

**Notes:**

1. Rates per 100,000, adjusted to U.S. 2000 population.
2. See Appendix E for ICD-9 and ICD-10 cause of death codes.
3. "---" indicates rate does not meet standards of reliability or precision; based on fewer than 20 deaths in the numerator.

**Source:** Delaware Health and Social Services, Division of Public Health, Delaware Health Statistics Center

TABLE F-32  
 FIVE-YEAR AGE-ADJUSTED MORTALITY RATES FOR SELECTED LEADING CAUSES OF DEATH BY RACE AND SEX  
 DELAWARE, 1994-2014

Cause of Death/ Race-Sex	1994 -1998	1995 -1999	1996 -2000	1997 -2001	1998 -2002	1999 -2003	2000 -2004	2001 -2005	2002 -2006	2003 -2007	2004 -2008	2005 -2009	2006 -2010	2007 -2011	2008 -2012	2009 -2013	2010 -2014
<b>Diseases of the heart</b>																	
White	286.5	278.6	270.1	262.1	251.9	246.3	237.2	229.4	217.3	209.0	197.2	186.5	176.0	170.8	163.3	160.1	157.8
Male	363.3	348.7	341.3	328.7	312.4	303.9	294.7	283.0	268.7	261.6	248.9	234.3	222.1	217.3	208.1	203.3	202.3
Female	229.2	225.8	215.9	210.6	205.2	201.1	192.0	187.0	176.7	167.2	157.0	148.6	139.7	133.9	127.8	125.2	122.2
Black	329.4	321.5	311.9	306.3	296.9	298.4	298.7	293.4	278.4	268.3	241.3	220.1	206.0	192.0	187.9	185.6	185.5
Male	404.5	393.2	378.9	364.6	356.0	357.2	362.7	347.8	338.1	325.2	293.0	263.7	261.0	245.2	234.1	225.7	224.0
Female	276.7	271.0	264.8	263.9	254.8	257.1	252.8	253.7	235.1	224.5	202.5	186.4	166.1	152.5	154.2	154.2	156.3
<b>Malignant neoplasms</b>																	
White	222.9	219.7	214.1	212.8	206.7	201.6	199.2	198.0	191.7	191.7	191.5	185.3	182.8	181.2	177.1	172.4	171.1
Male	282.3	275.3	264.9	259.5	253.3	247.7	245.9	244.5	237.1	233.0	231.6	222.4	220.1	214.6	209.8	204.7	202.4
Female	186.1	185.8	182.6	182.9	176.2	171.1	167.8	166.7	160.9	163.5	163.7	159.0	156.0	157.2	153.8	149.3	148.7
Black	306.3	302.7	285.0	267.6	253.6	254.8	241.8	240.0	233.3	223.8	212.2	207.8	202.2	197.8	202.3	197.9	195.8
Male	408.4	406.7	371.3	343.0	334.0	334.1	309.9	311.5	300.6	283.3	263.4	261.0	256.4	250.0	250.5	246.0	238.2
Female	246.9	243.1	235.3	223.7	208.4	207.6	199.2	195.2	189.8	184.9	178.0	173.0	166.8	162.6	170.1	166.9	168.0
<b>Cerebrovascular diseases</b>																	
White	48.7	48.0	49.2	49.3	49.2	48.8	46.4	43.4	41.9	39.0	36.6	36.3	35.8	35.6	35.2	34.7	34.5
Male	51.6	50.0	50.5	52.0	50.8	50.3	48.7	47.0	42.5	38.7	35.5	34.0	33.1	34.9	35.6	35.2	35.3
Female	46.0	45.8	47.3	46.7	47.5	47.1	44.6	41.1	41.2	38.6	36.9	37.3	36.9	35.4	34.7	34.1	33.8
Black	75.2	71.0	70.7	68.6	69.9	66.8	67.2	64.5	61.1	60.2	57.8	57.3	54.3	50.9	49.4	48.9	46.2
Male	87.5	80.5	78.1	66.8	67.4	63.8	60.0	61.8	64.1	66.7	66.1	66.0	63.5	61.5	57.6	55.6	55.7
Female	65.6	62.7	64.4	67.2	68.6	66.4	68.7	64.4	58.5	55.6	52.3	51.5	47.4	43.3	43.7	44.0	40.1
<b>Chronic lower respiratory diseases</b>																	
White	42.1	42.5	43.5	42.7	43.1	42.2	41.3	42.3	42.0	41.4	43.1	43.8	43.1	44.4	43.9	43.0	42.6
Male	55.6	55.5	54.5	52.3	51.1	47.7	46.0	46.7	45.4	45.0	47.9	47.7	45.5	46.3	44.5	42.6	42.5
Female	36.0	36.5	38.3	38.0	38.9	39.4	38.6	39.6	39.9	38.9	39.5	41.0	41.3	43.0	43.6	43.6	42.8
Black	33.0	34.4	35.6	35.8	35.1	34.0	34.4	32.2	32.5	32.3	34.1	33.2	33.2	33.9	35.1	33.3	32.8
Male	44.3	48.7	51.1	50.9	53.0	51.9	50.3	46.3	47.7	46.6	51.4	48.7	47.3	47.6	46.6	42.5	41.0
Female	25.3	26.0	25.8	26.0	24.0	22.4	23.9	23.6	23.7	24.2	24.9	25.0	25.6	26.0	28.2	27.6	27.7
<b>Diabetes mellitus</b>																	
White	24.5	23.8	23.2	23.5	22.7	22.4	22.2	22.8	21.5	20.8	19.8	19.3	17.8	17.5	17.7	17.1	16.7
Male	26.2	26.6	26.0	25.7	26.0	25.8	25.7	26.3	25.5	25.4	24.0	23.1	21.5	21.2	21.1	21.3	20.8
Female	23.2	21.9	21.3	21.8	20.3	19.7	19.6	20.2	18.6	17.5	16.7	16.2	14.6	14.3	14.6	13.4	13.3
Black	57.5	58.6	55.1	53.0	54.0	50.8	51.7	50.8	47.2	46.7	44.1	40.9	38.7	41.1	38.8	39.1	39.5
Male	62.3	62.4	59.1	59.5	62.1	54.7	56.1	54.4	50.9	49.6	50.5	46.5	45.0	45.0	42.5	43.4	46.1
Female	55.7	57.0	54.0	49.9	50.2	48.4	49.1	48.6	45.7	44.7	39.9	37.0	33.9	37.3	35.6	36.3	35.3
<b>Influenza and pneumonia</b>																	
White	32.6	30.5	30.3	29.2	26.7	22.6	21.4	18.8	17.0	15.0	14.7	14.1	13.1	12.5	12.2	12.1	12.0
Male	41.7	38.6	38.2	36.3	33.2	27.0	26.1	22.6	20.8	18.4	17.8	17.1	16.3	15.4	15.0	14.7	14.0
Female	27.6	25.8	25.9	25.1	22.8	19.7	18.5	16.4	14.4	12.9	12.8	12.1	11.0	10.5	10.3	10.4	10.7
Black	35.0	31.7	30.1	25.5	23.1	20.1	20.3	18.2	17.4	15.6	15.2	12.6	12.0	12.2	12.3	11.7	13.0
Male	56.0	46.6	45.0	39.0	32.8	28.7	31.8	28.5	26.1	24.3	24.8	18.6	17.6	17.3	15.0	13.9	14.8
Female	24.0	23.1	21.6	17.4	16.8	14.7	14.1	12.4	12.7	11.4	10.7	9.8	9.2	9.2	10.4	10.1	11.9

TABLE F-32 (continued)

Cause of Death/ Race-Sex	1994 -1998	1995 -1999	1996 -2000	1997 -2001	1998 -2002	1999 -2003	2000 -2004	2001 -2005	2002 -2006	2003 -2007	2004 -2008	2005 -2009	2006 -2010	2007 -2011	2008 -2012	2009 -2013	2010 -2014
<b>Alzheimer's disease</b>																	
White	8.2	9.8	11.5	13.8	15.3	17.1	17.4	18.5	18.9	19.7	20.2	19.5	19.2	18.8	18.2	17.2	16.9
Male	6.9	8.9	10.0	12.4	14.3	15.1	14.8	15.6	16.2	17.0	17.5	17.2	16.5	15.4	14.8	14.3	13.8
Female	8.8	10.3	12.1	14.6	15.8	18.1	18.9	20.1	20.3	21.1	21.6	20.6	20.8	20.9	20.4	18.9	18.8
Black	---	5.8	8.2	8.8	9.8	12.7	14.1	14.4	14.5	15.7	14.5	14.8	16.6	17.2	18.7	19.9	19.6
Male	---	---	---	---	---	---	14.2	---	---	13.4	12.7	12.3	13.6	13.7	13.4	15.2	14.8
Female	---	---	8.2	8.3	8.8	12.1	13.7	15.6	15.5	16.4	14.9	15.8	17.7	18.7	6.1	6.3	6.1
<b>Nephritis, nephrotic syndrome, and nephrosis</b>																	
White	11.5	11.3	11.2	11.1	11.9	12.2	12.6	12.5	13.0	13.1	13.8	14.0	14.2	13.9	13.3	12.8	12.2
Male	15.7	15.2	14.9	15.2	16.7	16.4	17.4	17.5	17.6	17.6	18.0	17.5	17.5	16.6	15.5	15.0	14.5
Female	9.3	9.3	9.2	8.7	9.1	9.7	9.7	9.5	9.9	10.1	10.9	11.6	11.9	12.2	11.9	11.3	10.5
Black	28.1	28.4	31.1	31.8	30.6	28.1	27.2	27.4	28.5	31.1	32.2	32.8	31.8	30.2	27.6	25.7	26.0
Male	30.8	32.7	38.7	35.8	39.0	37.4	36.6	35.3	39.7	41.8	42.5	40.8	40.0	38.3	33.2	30.2	32.7
Female	26.1	25.9	26.1	28.9	25.7	22.4	21.9	23.5	22.2	25.1	26.5	27.5	26.6	25.7	16.0	16.4	16.6
<b>Septicemia</b>																	
White	13.7	13.0	13.8	14.0	14.5	14.4	14.7	13.9	13.1	12.2	12.2	11.5	10.9	10.8	10.6	10.8	11.0
Male	15.6	15.3	16.0	16.0	16.7	15.8	16.5	15.5	14.9	14.3	14.0	12.6	12.1	12.1	11.3	12.0	12.6
Female	12.5	11.5	12.7	12.9	13.4	13.6	13.6	12.9	11.9	10.7	11.0	10.8	10.1	9.8	10.3	10.0	9.9
Black	25.2	25.7	25.9	28.7	28.1	28.9	25.7	24.6	23.2	21.9	19.9	19.7	18.1	15.9	15.7	15.3	14.7
Male	33.3	30.1	32.7	34.0	31.8	33.7	28.1	25.1	23.4	21.7	19.1	18.6	17.3	15.8	16.7	14.8	15.5
Female	22.0	23.7	22.1	25.7	26.3	26.1	23.9	24.6	23.2	21.9	20.3	20.3	18.3	15.9	12.8	13.2	12.2
<b>Intentional self-harm (suicide)</b>																	
White	12.6	12.7	12.8	12.9	12.3	13.0	12.9	12.6	12.0	12.5	12.5	12.7	13.3	13.7	14.3	14.7	15.4
Male	21.4	21.9	21.9	21.8	21.1	21.7	21.0	21.0	19.9	19.8	20.2	20.6	21.4	21.8	23.1	23.4	24.6
Female	4.5	4.3	4.4	4.7	4.4	5.1	5.5	5.0	4.8	5.7	5.3	5.3	5.5	5.9	5.8	6.5	6.7
Black	5.4	4.9	4.1	4.8	5.1	4.9	5.6	6.1	5.2	4.6	5.4	5.6	5.4	5.3	5.8	5.1	4.2
Male	11.2	9.7	7.7	8.9	10.0	9.3	10.1	10.8	9.9	8.2	9.5	10.8	10.3	9.7	10.2	9.5	7.3
Female	---	---	---	---	---	---	---	---	---	---	---	---	---	---	---	---	---
<b>Chronic liver disease and cirrhosis</b>																	
White	8.9	9.1	9.5	9.0	9.5	10.0	10.0	9.8	9.7	9.0	8.6	8.8	9.0	9.1	9.1	8.7	8.9
Male	12.2	13.0	12.6	11.8	11.6	12.1	11.5	11.8	12.4	11.8	11.7	12.5	12.9	13.0	13.3	12.8	12.8
Female	5.9	5.7	6.7	6.5	7.7	8.1	8.5	8.0	7.2	6.6	5.7	5.5	5.4	5.5	5.1	4.9	5.3
Black	10.7	10.0	8.6	9.1	9.0	9.5	9.3	8.2	7.3	6.6	6.4	6.3	7.0	7.0	6.9	6.4	6.3
Male	15.8	13.1	12.1	12.2	12.8	14.0	14.5	12.1	12.2	10.9	11.0	9.9	11.5	12.0	11.1	10.0	10.4
Female	---	7.1	---	6.4	---	5.8	---	---	---	---	---	---	---	---	---	---	---
<b>Assault (homicide)</b>																	
White	3.2	3.1	2.4	2.2	2.2	2.0	2.1	2.6	2.5	2.4	2.9	3.0	3.0	3.2	3.3	3.2	3.0
Male	3.9	3.7	2.9	2.7	2.6	2.5	2.5	3.5	3.4	3.3	4.1	4.1	4.1	4.4	4.8	4.4	4.2
Female	2.6	2.4	1.9	1.7	1.8	1.6	1.7	1.7	1.5	1.5	1.7	1.9	1.9	2.0	1.9	2.0	1.9
Black	12.4	11.7	11.7	9.0	9.0	8.9	9.8	11.3	13.5	14.1	16.2	16.2	16.5	15.2	16.3	15.2	16.7
Male	18.9	18.8	18.2	14.4	15.0	15.9	16.9	20.2	24.6	25.8	30.1	30.7	31.1	28.7	30.5	28.0	30.6
Female	6.5	5.4	5.7	---	---	---	---	---	---	---	---	---	---	---	---	---	---

TABLE F-32 (continued)

Cause of Death/ Race-Sex	1994 -1998	1995 -1999	1996 -2000	1997 -2001	1998 -2002	1999 -2003	2000 -2004	2001 -2005	2002 -2006	2003 -2007	2004 -2008	2005 -2009	2006 -2010	2007 -2011	2008 -2012	2009 -2013	2010 -2014
<b>Certain conditions originating in the perinatal period</b>																	
White	3.2	3.3	4.2	5.1	5.8	6.2	6.2	5.7	5.1	4.8	4.5	4.2	3.6	3.4	3.2	2.7	3.0
Male	3.1	3.4	4.7	5.7	6.3	6.9	6.5	5.9	5.3	5.4	5.1	5.1	4.4	4.2	4.1	3.3	3.8
Female	3.2	3.1	3.7	4.5	5.4	5.5	5.8	5.5	4.8	4.2	3.9	3.4	2.8	2.6	2.3	2.1	2.3
Black	11.9	13.9	14.7	16.7	16.6	16.2	15.1	16.4	14.9	14.6	14.2	15.0	13.2	13.1	13.3	12.5	10.7
Male	14.0	16.4	16.8	18.8	19.0	18.9	17.1	19.1	16.8	15.7	14.8	16.0	13.8	13.4	14.2	14.6	12.0
Female	9.7	11.4	12.5	14.5	14.1	13.4	13.2	13.8	13.1	13.4	13.5	14.0	12.6	12.7	12.5	10.4	9.4
<b>Congenital malformations</b>																	
White	4.2	4.2	4.0	3.7	3.3	3.3	3.3	3.1	3.1	2.8	2.8	2.6	3.0	3.0	3.1	3.3	3.1
Male	4.2	4.3	4.2	3.7	3.6	3.9	3.7	3.3	3.3	3.0	2.7	2.4	2.9	2.8	2.8	3.0	2.8
Female	4.3	4.2	3.9	3.7	3.1	2.7	2.9	2.8	2.8	2.7	2.8	2.8	3.1	3.3	3.4	3.6	3.4
Black	3.4	3.4	3.5	3.9	4.0	3.6	3.7	3.6	3.3	2.9	3.0	2.6	2.5	2.4	2.5	2.1	2.4
Male	4.2	4.3	4.2	3.7	3.6	3.9	3.7	3.3	3.3	3.0	2.7	2.4	2.9	2.8	2.8	3.0	2.8
Female	4.3	4.2	3.9	3.7	3.1	2.7	2.9	2.8	2.8	2.7	2.8	2.8	3.1	3.3	3.4	3.6	3.4
<b>Human immunodeficiency virus (HIV)</b>																	
White	5.9	4.7	3.0	2.0	2.2	2.6	2.5	2.4	2.3	2.1	2.0	1.8	1.8	1.7	1.5	1.2	1.2
Male	10.6	8.4	5.4	3.6	3.7	4.4	3.9	3.6	3.5	3.5	3.0	2.9	2.8	2.7	2.1	1.8	1.8
Female	---	---	---	---	---	---	---	---	---	---	---	---	---	---	---	---	---
Black	55.5	48.8	42.0	36.4	35.6	36.4	35.5	34.3	31.5	29.4	26.3	24.1	21.6	19.6	17.6	15.9	15.1
Male	93.3	80.3	66.9	56.7	55.8	54.8	52.6	51.3	46.1	40.0	32.7	29.5	26.7	25.4	24.2	24.8	23.1
Female	23.6	22.0	20.9	19.2	18.5	21.1	21.3	20.2	19.5	20.7	21.5	19.9	17.6	15.0	20.3	14.0	13.5
<b>Accidents (unintentional injuries)</b>																	
White	36.2	36.1	37.3	38.2	37.5	37.2	37.5	37.4	38.0	38.3	39.9	40.6	41.5	41.7	42.6	43.0	45.1
Male	51.1	48.4	50.1	50.9	50.6	51.4	51.5	51.8	53.2	54.5	55.7	57.1	57.0	57.0	57.4	57.3	59.9
Female	22.3	24.2	25.4	26.5	25.6	24.3	24.7	24.2	24.0	23.3	25.1	25.2	27.1	27.5	28.9	29.9	31.3
Black	39.9	36.5	34.2	36.2	37.5	37.3	35.2	32.1	29.6	26.4	24.2	24.6	26.1	24.4	25.4	26.5	27.7
Male	60.9	56.7	53.0	52.8	56.6	56.0	50.3	47.0	44.3	38.2	34.4	35.7	37.2	35.2	37.6	39.2	40.6
Female	24.0	21.4	18.6	22.0	21.1	21.7	21.9	19.7	17.6	16.6	15.4	15.4	16.5	14.9	19.8	19.8	20.8
<b>Essential hypertension and hypertensive renal disease</b>																	
White	3.5	3.5	4.2	4.5	5.0	5.1	5.7	6.0	5.7	5.2	4.8	4.4	4.3	4.3	4.2	4.6	4.2
Male	3.7	3.8	4.3	4.4	4.7	5.0	5.3	5.6	5.5	4.8	4.4	4.5	4.2	3.8	3.8	4.2	3.6
Female	3.4	3.3	4.0	4.3	5.0	5.0	5.8	6.1	5.7	5.4	4.8	4.3	4.2	4.4	4.2	4.7	4.4
Black	9.9	9.8	10.0	10.5	11.4	12.2	15.4	16.4	15.2	14.3	14.5	11.6	9.8	9.1	8.6	7.4	7.4
Male	---	12.7	12.9	13.1	11.8	14.2	19.8	20.4	19.5	20.2	18.1	12.0	10.4	10.1	9.4	8.0	8.6
Female	9.4	8.4	8.1	9.2	10.9	11.0	13.1	14.3	12.5	10.3	11.7	10.4	8.4	7.6	3.5	3.8	4.5
<b>Aortic aneurysm and dissection</b>																	
White	6.7	6.5	6.5	6.8	6.4	6.8	6.3	5.8	5.0	4.4	3.7	3.4	3.2	3.2	3.3	3.0	3.0
Male	10.8	10.6	10.4	11.3	10.0	9.6	8.8	8.3	6.9	6.2	5.5	5.1	4.7	4.4	4.3	3.8	3.9
Female	4.1	3.9	4.0	3.9	4.2	4.8	4.4	4.0	3.6	2.9	2.3	2.1	1.9	2.2	2.4	2.4	2.2
Black	6.1	5.6	5.0	5.0	5.5	6.0	6.9	6.4	5.4	5.1	4.1	3.7	3.6	3.4	3.2	3.8	3.4
Male	---	---	---	---	---	---	---	---	---	---	---	---	---	---	---	---	---
Female	---	---	---	---	---	---	7.0	6.6	---	---	---	---	---	---	---	---	---

TABLE F-32 (continued)

Cause of Death/ Race-Sex	1994 -1998	1995 -1999	1996 -2000	1997 -2001	1998 -2002	1999 -2003	2000 -2004	2001 -2005	2002 -2006	2003 -2007	2004 -2008	2005 -2009	2006 -2010	2007 -2011	2008 -2012	2009 -2013	2010 -2014
<b>Pneumonitis due to solids and liquids</b>																	
White	5.4	6.8	7.5	8.5	8.9	9.4	8.6	7.8	6.8	6.1	5.4	5.1	4.8	4.7	4.4	4.3	4.2
Male	8.8	10.1	10.5	11.8	11.5	11.6	10.5	9.5	7.9	7.4	6.4	6.3	6.1	6.2	6.2	6.5	6.5
Female	3.8	5.1	5.8	6.7	7.3	8.0	7.4	6.8	5.9	5.2	4.6	4.3	3.8	3.7	3.3	2.9	2.6
Black	7.4	8.8	10.5	11.3	10.4	11.7	10.6	10.7	9.0	8.1	5.6	5.5	4.4	3.9	3.2	4.2	4.6
Male	---	---	15.4	19.8	17.9	19.9	18.5	18.0	15.2	12.9	---	---	9.1	---	---	7.9	8.4
Female	---	---	---	---	---	6.8	---	6.7	---	---	---	---	---	---	---	---	---
<b>Other diseases of respiratory system</b>																	
White	8.1	8.2	8.5	8.6	8.8	8.5	8.9	8.6	9.1	9.0	9.0	8.7	8.6	8.8	9.4	9.6	9.7
Male	10.7	10.0	10.6	10.2	9.8	9.7	10.1	10.1	11.3	11.0	10.4	10.3	10.2	9.9	11.4	12.1	12.1
Female	6.2	6.6	7.0	7.3	8.1	7.8	8.1	7.7	7.7	7.5	8.0	7.6	7.5	7.9	7.9	7.7	7.8
Black	6.7	6.1	6.9	7.1	7.9	7.3	7.4	7.1	7.0	7.4	9.3	9.8	10.1	10.4	9.2	7.6	8.4
Male	---	---	---	---	---	---	9.1	10.5	9.6	9.7	11.4	12.7	13.7	14.6	13.1	12.3	13.3
Female	---	---	7.9	8.2	7.7	6.5	6.4	---	5.5	5.9	8.0	8.3	8.2	8.0	7.1	5.4	4.6
<b>Parkinson's disease</b>																	
White	3.9	4.3	5.0	5.5	6.0	5.9	5.9	6.1	5.8	6.0	6.1	6.0	5.7	6.2	6.4	6.9	7.2
Male	6.1	6.0	6.8	8.0	8.5	8.7	8.9	9.1	8.8	9.0	8.8	8.4	8.0	8.0	8.2	9.1	9.9
Female	2.8	3.4	3.9	4.2	4.6	4.3	4.2	4.4	4.1	4.2	4.5	4.6	4.4	5.1	5.2	5.4	5.4
Black	---	---	---	---	---	---	---	---	---	---	---	---	---	---	---	---	---
Male	---	---	---	---	---	---	---	---	---	---	---	---	---	---	---	---	---
Female	---	---	---	---	---	---	---	---	---	---	---	---	---	---	---	---	---
<b>Dementia</b>																	
White	6.6	6.1	6.6	7.4	8.6	9.5	10.1	11.8	15.5	18.8	23.9	29.3	34.0	36.2	39.1	38.5	38.1
Male	7.5	7.0	7.9	7.8	7.9	8.3	8.7	9.4	12.8	15.6	20.0	24.9	29.3	31.1	33.9	33.8	33.8
Female	6.0	5.6	6.1	7.2	8.9	10.1	10.9	13.0	16.9	20.5	25.8	31.6	36.4	38.9	41.5	40.7	40.2
Black	---	---	6.0	5.8	8.7	10.4	15.4	16.3	23.1	30.1	34.3	37.1	40.4	41.8	41.9	41.2	41.9
Male	---	---	---	---	19.0	18.2	22.5	22.3	29.6	29.2	35.4	40.8	42.3	40.2	41.1	42.0	41.6
Female	---	---	---	---	---	---	12.5	13.5	20.1	30.2	33.8	34.9	39.1	42.3	41.8	40.0	41.6

AADR\_TRND(3)

**Notes:**

1. Rates per 100,000, adjusted to U.S. 2000 population.
2. See Appendix E for ICD-9 and ICD-10 cause of death codes.
3. "----" indicates rate does not meet standards of reliability or precision; based on fewer than 20 deaths in the numerator.

**Source:** Delaware Health and Social Services, Division of Public Health, Delaware Health Statistics Center