

DELAWARE VITAL STATISTICS ANNUAL REPORT, 2009



Suggested citation:

Delaware Health Statistics Center. *Delaware Vital Statistics Annual Report, 2009*.
Delaware Department of Health and Social Services, Division of Public Health: 2011.

Intentionally left blank

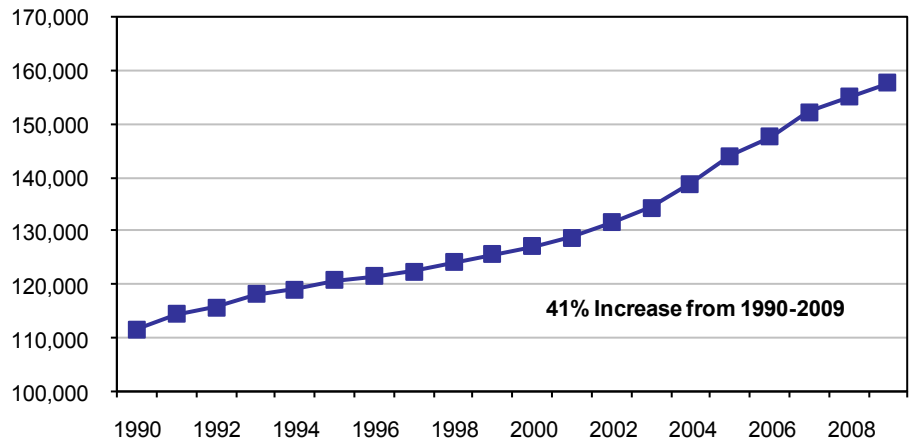
POPULATION

Delaware's three counties continued their increasing population trend, though they grew at different rates. Between 2000 and 2009, county populations grew annually by 2.7 percent for Kent, 0.7 percent for New Castle, and 2.5 percent for Sussex. Delaware's statewide increase was 1.4 percent.

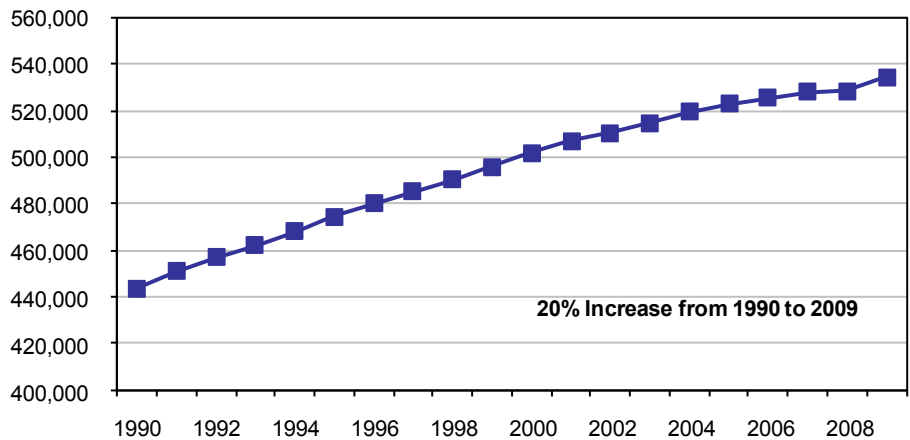
In 2009, more than half of Delaware's 65 and older population resided in New Castle County. However, residents 65 and older represented a much larger proportion of the Sussex County population, where 1 in 5 residents was 65 or older, versus New Castle and Kent counties, where approximately 1 in 8 residents was 65 or older.

Delaware Resident Population by County, 1990-2009

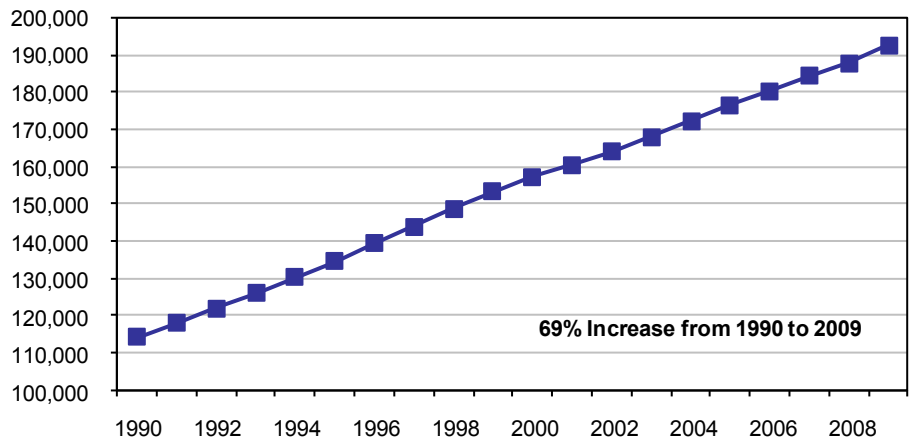
Kent County Population 1990-2009



New Castle County Population 1990-2009

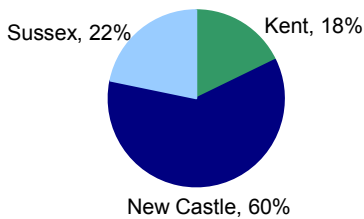


Sussex County Population 1990-2009



Over half of Delaware's total population resides in New Castle County.

Percent of Population by County Delaware, 2009

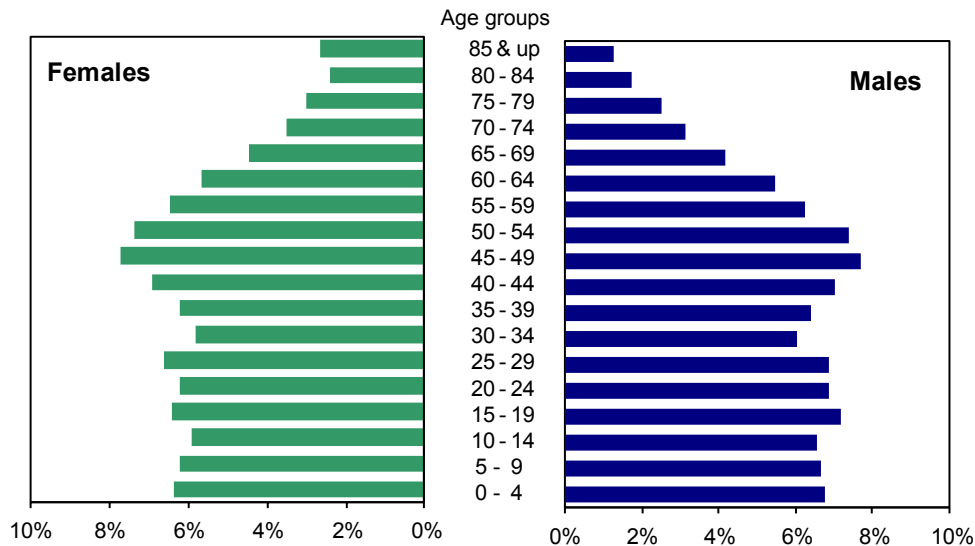


Source: Delaware Health Statistics Center

Source: Delaware Health Statistics Center

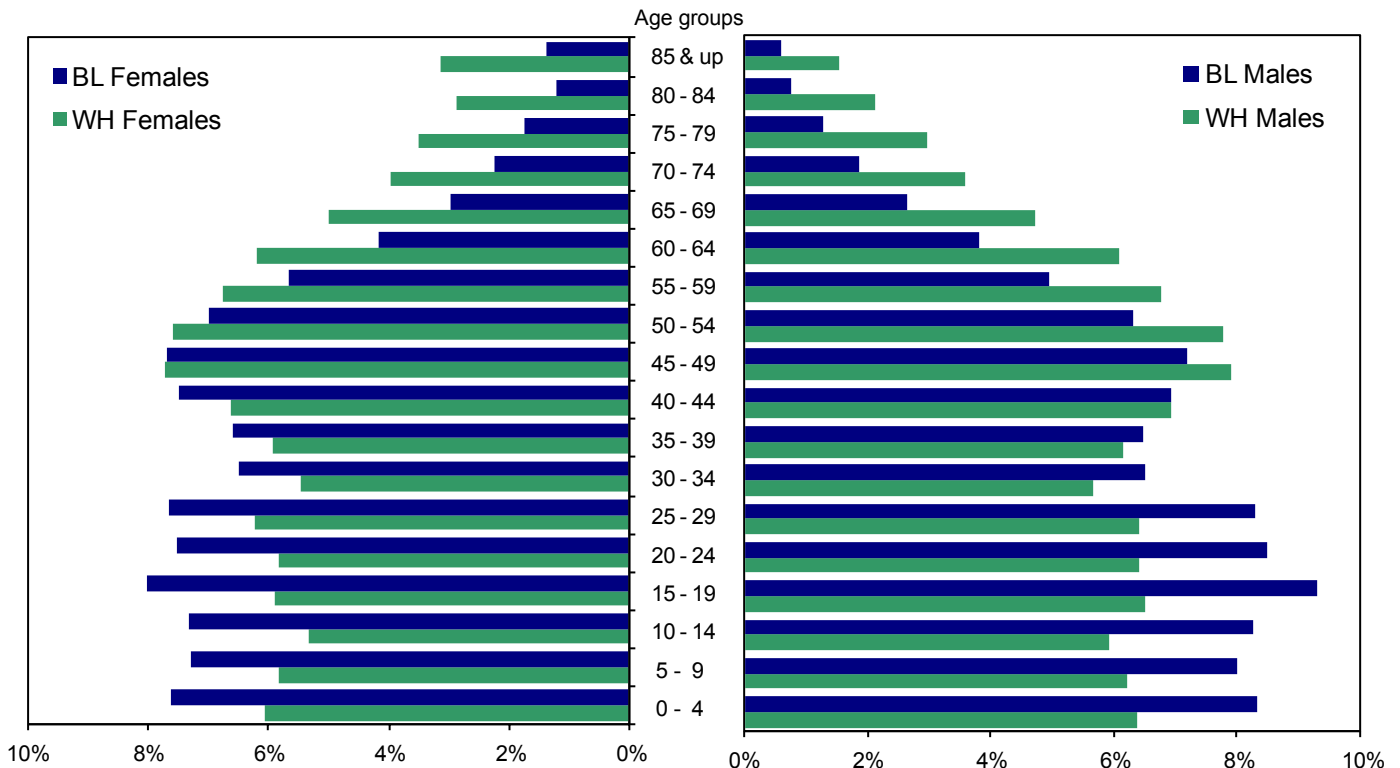
POPULATION

In 2009, just over 50 percent of Delaware's population was female. Females made up a greater proportion of the older age groups, which reflects the longer female life expectancy. Delaware females born in 2009 could expect to live an average of 81.4 years, versus males, who could expect to live 76.3 years.



Source: Delaware Health Statistics Center

When the population was broken down by race, the higher proportion of females in the older age groups appeared in the black population as well. However, both black males and females had a greater percentage of their population in the 0-39 year age range than whites; in the 45 and above age range, whites made up a greater proportion of the population.



Source: Delaware Health Statistics Center

TABLE A-1
PERCENT CHANGE IN POPULATION BY SEX

DELAWARE, COUNTIES, CITY OF DOVER, CITY OF NEWARK, AND CITY OF WILMINGTON, 1970-2020

Area/ Sex	1970	1980	% Change 1970-1980	1990	% Change 1980-1990	2000	% Change 1990-2000	2010*	% Change 2000-2010	2020*	% Change 2010-2020	% Change 2000-2020
Delaware	548104	594338	8.4	666168	12.1	786408	18.0	895173	13.8	981922	9.7	24.9
Male	267332	286599	7.2	322966	12.7	381565	18.1	434454	13.9	476374	9.6	24.8
Female	280772	307739	9.6	343202	11.5	404843	18.0	460719	13.8	505548	9.7	24.9
Kent	81892	98219	19.9	110993	13.0	127114	14.5	160058	25.9	178817	11.7	40.7
Male	41337	48254	16.7	54300	12.5	61280	12.9	77121	25.9	86094	11.6	40.5
Female	40555	49965	23.2	56693	13.5	65834	16.1	82937	26.0	92723	11.8	40.8
Dover	17488	23512	34.4	27630	17.5	32197	16.5	37341	16.0	38952	4.3	21.0
Male	8319	11695	40.6	13408	14.6	15144	12.9	17394	14.9	17907	2.9	18.2
Female	9169	11817	28.9	14222	20.4	17053	19.9	19947	17.0	21045	5.5	23.4
New Castle	385856	398115	3.2	441946	11.0	501855	13.6	538170	7.2	567764	5.5	13.1
Male	187124	191176	2.2	213869	11.9	243498	13.9	261169	7.3	275065	5.3	13.0
Female	198732	206939	4.1	228077	10.2	258357	13.3	277001	7.2	292699	5.7	13.3
Newark	20757	25247	21.6	26463	4.8	29367	11.0	30486	3.8	30715	0.8	4.6
Male	10242	11993	17.1	12408	3.5	13503	8.8	14236	5.4	14348	0.8	6.3
Female	10515	13254	26.0	14055	6.0	15864	12.9	16250	2.4	16367	0.7	3.2
Wilmington	80386	70195		71529	1.9	72728	1.7	73022	0.4	72549	-0.6	-0.2
Male	36968	31458	-14.9	33249	5.7	34692	4.3	35612	2.7	35902	0.8	3.5
Female	43418	38737	-10.8	38280	-1.2	38036	-0.6	37410	-1.6	36647	-2.0	-3.7
Sussex	80356	98004	22.0	113229	15.5	157439	39.0	196945	25.1	235341	19.5	49.5
Male	38871	47169	21.3	54797	16.2	76787	40.1	96164	25.2	115215	19.8	50.0
Female	41485	50835	22.5	58432	14.9	80652	38.0	100781	25.0	120126	19.2	48.9

Note:

*Numbers for this year are projections.

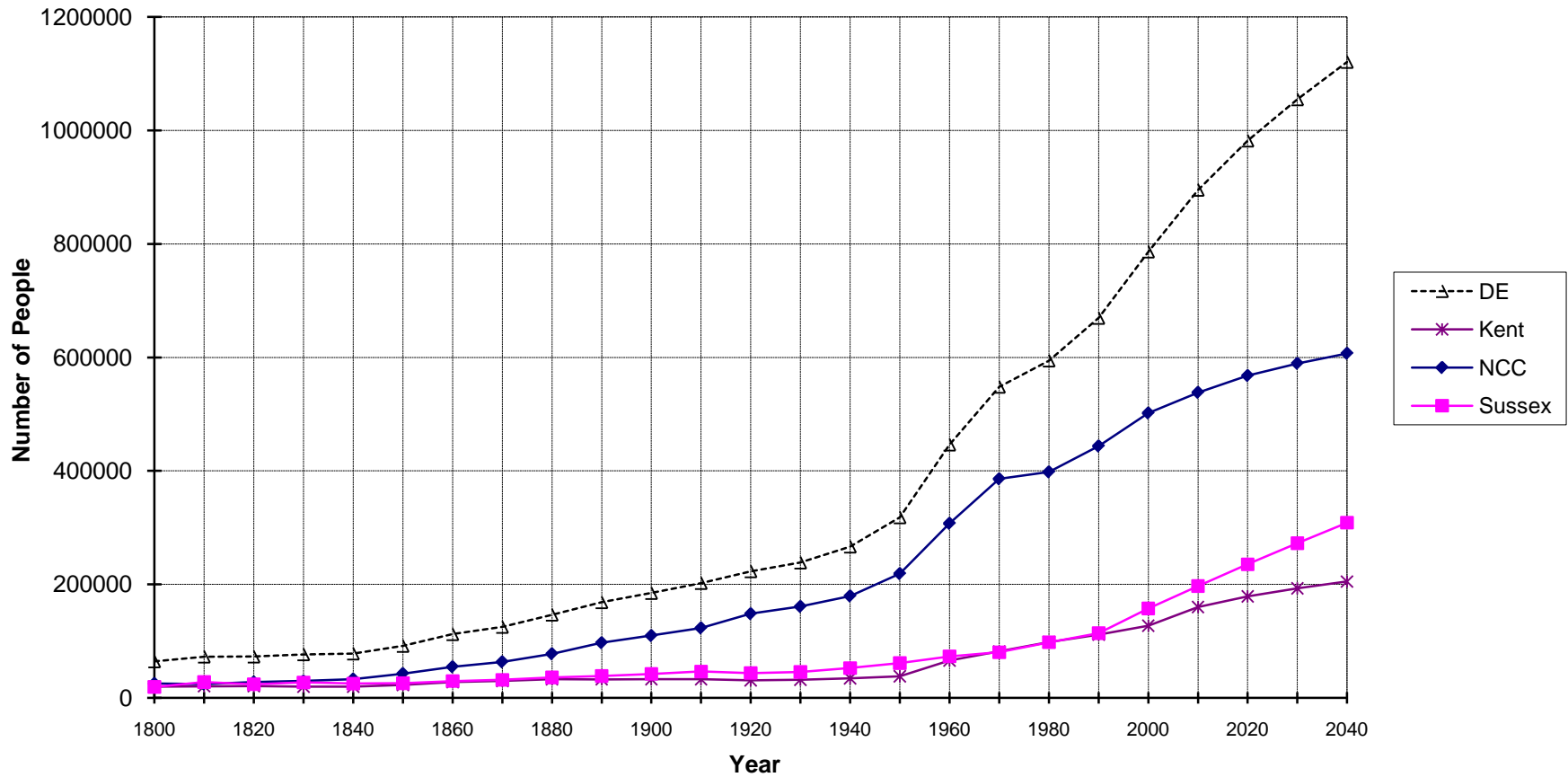
POPSEX

Sources:

Delaware Health Statistics Center
Delaware Population Consortium
U.S. Bureau of the Census

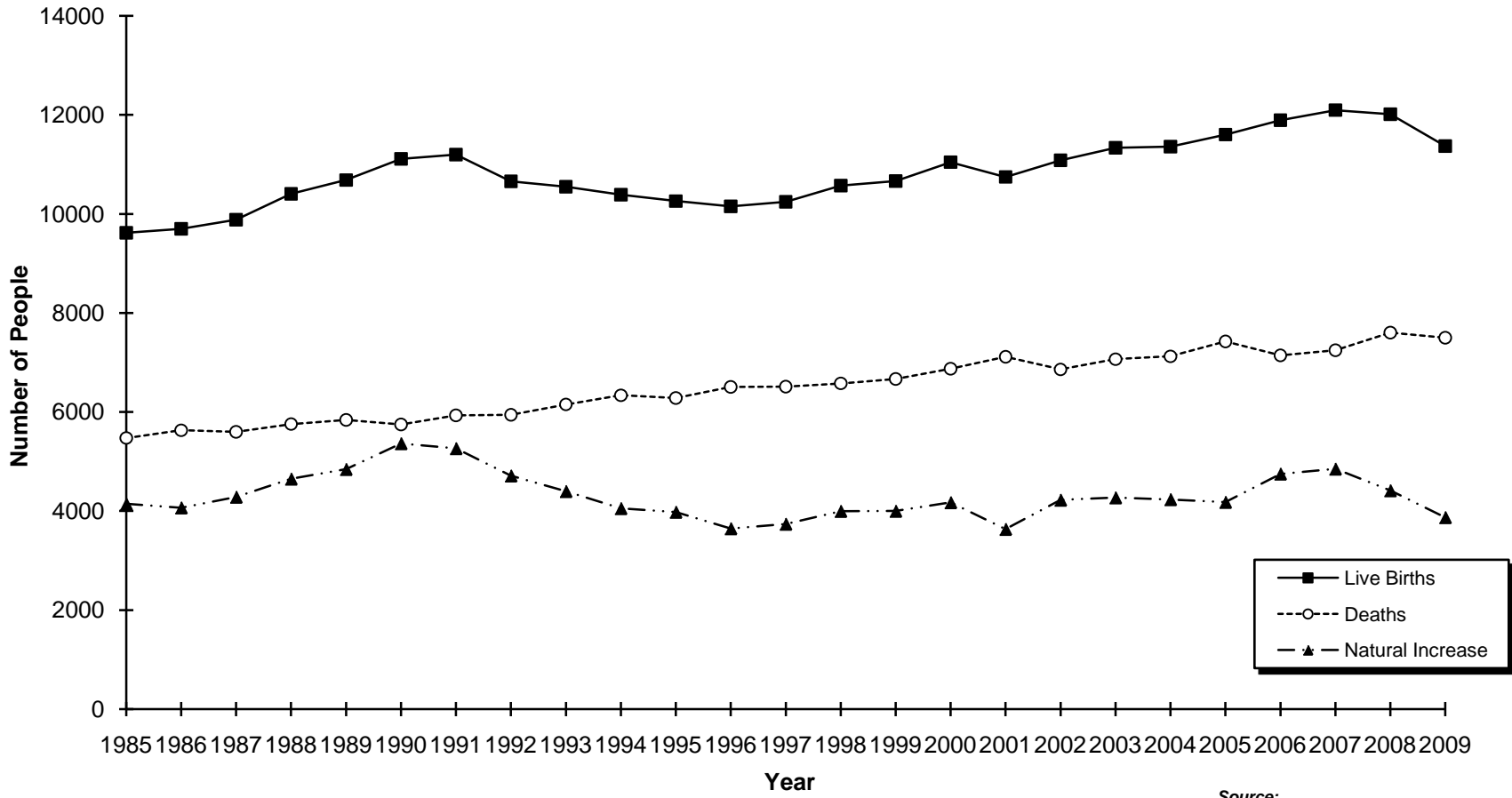
**Figure A-1
Population Growth**

Delaware and Counties, 1800-2040



Sources:
Delaware Health Statistics Center
Delaware Population Consortium

Figure A-2
Live Births, Deaths, and Natural Increase
Delaware, 1985-2009



Source:
 Delaware Health Statistics Center

TABLE A-2
POPULATION ESTIMATES BY SEX, RACE AND AGE

DELAWARE, COUNTIES, CITY OF DOVER, CITY OF NEWARK, AND CITY OF WILMINGTON, 2009

Area/ Sex/Race	Age																		
	Total	0-4	5-9	10-14	15-19	20-24	25-29	30-34	35-39	40-44	45-49	50-54	55-59	60-64	65-69	70-74	75-79	80-84	85+
Delaware	885131	58137	56726	55099	60165	57952	59649	52330	55963	61615	68235	65349	56248	49338	38188	29475	24560	18581	17521
Male	429573	29023	28496	28150	30866	29537	29568	25874	27581	30054	33140	31684	26864	23564	17897	13454	10776	7555	5490
White	318869	20320	19866	18862	20725	20444	20445	18072	19617	22044	25156	24828	21550	19443	15056	11378	9443	6755	4865
Black	91468	7622	7325	7567	8522	7775	7575	5942	5910	6341	6565	5787	4537	3475	2423	1714	1153	695	540
Female	455558	29114	28230	26949	29299	28415	30081	26456	28382	31561	35095	33665	29384	25774	20291	16021	13784	11026	12031
White	336408	20364	19667	17953	19817	19578	21010	18363	19946	22362	26008	25551	22797	20831	16813	13400	11784	9636	10528
Black	100648	7672	7331	7367	8070	7561	7703	6524	6626	7555	7740	7029	5688	4192	2987	2241	1742	1231	1389
Kent	157740	11386	10840	10719	11549	11708	11608	9691	9634	10757	12234	11079	8887	7844	6016	4802	3923	2641	2422
Male	76001	5687	5436	5450	5944	5828	5660	4706	4550	5198	5916	5267	4212	3712	2801	2155	1733	1030	716
White	55149	3978	3759	3728	4028	4054	3625	3229	3329	3905	4493	4084	3251	2916	2235	1713	1397	854	571
Black	17952	1509	1462	1457	1688	1561	1813	1227	997	1061	1164	1005	846	688	506	378	297	157	136
Female	81739	5699	5404	5269	5605	5880	5948	4985	5084	5559	6318	5812	4675	4132	3215	2647	2190	1611	1706
White	58423	3979	3722	3554	3855	4096	3669	3187	3628	4033	4665	4276	3478	3161	2528	2104	1746	1328	1414
Black	19979	1520	1470	1467	1515	1565	2071	1543	1186	1263	1388	1289	1013	805	571	442	362	237	272
Dover	36559	2466	2233	2168	3273	3934	2598	2140	1968	2176	2471	2388	2012	1670	1385	1152	1058	747	720
Male	17040	1247	1177	1047	1584	1905	1237	999	897	1025	1086	1122	898	770	635	482	401	307	221
Female	19519	1219	1056	1121	1689	2029	1361	1141	1071	1151	1385	1266	1114	900	750	670	657	440	499
New Castle	534636	35809	35506	34279	37682	35306	37890	33953	36277	39201	41762	39430	32984	27681	20241	14845	12218	9705	9867
Male	259473	17853	17815	17514	19286	18150	18685	16771	17986	19105	20323	19215	15603	13122	9404	6707	5144	3811	2979
White	184926	12177	12111	11295	12436	12080	12836	11523	12305	13456	14867	14449	11962	10317	7487	5342	4344	3325	2614
Black	60418	4942	4809	4976	5680	5111	4729	3888	4112	4371	4422	3957	3041	2313	1587	1096	674	411	299
Female	275163	17956	17691	16765	17156	17156	19205	17182	18291	20096	21439	20215	17381	14559	10837	8138	7074	5894	6888
White	194831	12230	12010	10704	11911	11288	13558	11865	12236	13500	15160	14648	12837	11158	8508	6412	5845	5034	5927
Black	66917	4993	4838	4883	5469	4939	4626	4173	4671	5325	5298	4795	3885	2849	1993	1474	1074	755	877
Newark	30373	878	966	1089	5923	8323	1859	1254	999	1176	1498	1504	1286	1032	795	572	502	403	314
Male	14172	454	514	553	2300	3989	1022	667	488	595	739	730	607	500	342	233	208	149	82
Female	16201	424	452	536	3623	4334	837	587	511	581	759	774	679	532	453	339	294	254	232
Wilmington*	73079	5798	5059	4413	5328	5351	5720	5532	5486	5000	4959	4785	4074	3284	2434	1834	1501	1141	1380
Male	35558	2961	2611	2288	2709	2689	2998	2799	2828	2508	2476	2349	1899	1468	1016	733	536	360	330
White	13502	947	802	487	595	902	1215	1313	1351	987	900	944	802	722	496	318	278	216	227
Black	19955	1827	1645	1631	1899	1595	1528	1279	1300	1388	1469	1335	1017	687	489	388	244	137	97
Female	37521	2837	2448	2125	2619	2662	2722	2733	2658	2492	2483	2436	2175	1816	1418	1101	965	781	1050
White	13534	889	726	426	515	812	980	1180	1099	767	754	839	887	840	654	477	507	472	710
Black	22061	1768	1583	1556	1925	1664	1527	1390	1406	1590	1629	1521	1208	913	723	592	442	297	327
Sussex	192755	10942	10380	10101	10934	10938	10151	8686	10052	11657	14239	14840	14377	13813	11931	9828	8419	6235	5232
Male	94099	5483	5245	5186	5636	5559	5223	4397	5045	5751	6901	7202	7049	6730	5692	4592	3899	2714	1795
White	78794	4165	3996	3839	4261	4310	3984	3320	3983	4683	5796	6295	6337	6210	5334	4323	3702	2576	1680
Black	13098	1171	1054	1134	1154	1103	1033	827	801	909	979	825	650	474	330	240	182	127	105
Female	98656	5459	5135	4915	5298	5379	4928	4289	5007	5906	7338	7638	7328	7083	6239	5236	4520	3521	3437
White	83154	4155	3935	3695	4051	4194	3783	3311	4082	4829	6183	6627	6482	6512	5777	4884	4193	3274	3187
Black	13752	1159	1023	1017	1086	1057	1006	808	769	967	1054	945	790	538	423	325	306	239	240

Sources:
Delaware Health Statistics Center
Delaware Population Consortium