

**2020  
Anniversary  
Report**

**50 years of medical education  
for Delawareans**

The logo for DIMER (Delaware Institute of Medical Education and Research) features the word "DIMER" in a bold, blue, sans-serif font. The letter "D" is stylized to include a white silhouette of the state of Delaware. The logo is framed by two horizontal gold bars, one above and one below the text.

**DIMER**

Delaware Institute of Medical Education and Research

# Delaware Institute of Medical Education and Research (DIMER) Board of Directors

Sherman L. Townsend, Chairman  
University of Delaware, Board of Trustees  
(retired)

Michael Alexander, MD  
Nemours/A.I. duPont Hospital for Children  
Medical Residency Program  
(retired)

David A. Barlow, PhD  
Department of Education  
Delaware Higher Education Office

Katherine Collison, MSM  
Department of Health and Social Services,  
Division of Public Health ex officio, on behalf of  
Karyl Rattay, MD - Director

John F. Glenn, MD  
Kent County - Public Member

Marshá T. Horton, PhD  
Delaware State University  
College of Health and Behavioral Science

Neil Jasani, MD, MBA  
ChristianaCare  
(formerly Christiana Care Health System)

Janice L. Lee, MD  
Delaware Health Care Commission

Vincent Lobo, Jr., DO  
Sussex County - Public Member

Kathleen Matt, PhD  
University of Delaware, College of Health Sciences  
(formerly College of Nursing)

Lisa Maxwell, MD  
ChristianaCare

Barret Michalec, PhD  
University of Delaware

Robert Monteleone, MD  
Saint Francis Hospital  
Medical Residency Program

Wayne A. Smith, MGA, MA  
Delaware Healthcare Association

Carl E. Turner, MD  
Wilmington - Public Member

*Board members are subject to serve three (3) year terms or until reappointment by the representing organization.  
Contact [DHCC@delaware.gov](mailto:DHCC@delaware.gov) or (302) 739-2730 for details about appointments and/or vacancies.*

Copyright © 2020 Delaware Health Care Commission

All rights reserved. This publication or any portion thereof may not be reproduced or used in any manner whatsoever without the express written permission of the publisher.

Delaware Health Care Commission  
Margaret O'Neill Building – D600C  
410 Federal Street – 3rd Floor – Suite 7  
Dover, Delaware 19901  
<https://dhss.delaware.gov/dhcc/>

# Table of Contents

• <i>DIMER Board of Directors</i>	2
• <i>Executive Summary</i>	4
• <i>Welcome</i>	
Kara Odom Walker, MD, MPH, MSHS - Secretary, Department of Health and Social Services	7
Nancy Fan, MD - Chair, Delaware Health Care Commission	8
Sherman Townsend - Chair, DIMER Board of Directors	9
• <i>History</i>	
Sherman Townsend (reprint from Delaware Medical Journal)	10
• <i>Why DIMER Today?</i>	
Introduction - Omar A. Khan, MD, MHS - President and CEO, Delaware Health Sciences Alliance	14
Institutional Perspectives	
David L. Paskin, MD - Vice Dean, Sidney Kimmel Medical College	16
Deborah Benvenger, MBA - Chief Admissions Officer, Philadelphia College of Osteopathic Medicine	17
Neil B. Jasani, MD, MBA - Chief People Officer, ChristianaCare	18
Lisa C. Maxwell, MD, MHCDS - Chief Learning Officer, ChristianaCare	18
Steven M. Selbst, MD - Vice Chair for Education, Nemours/Al duPont Hospital for Children	20
Assar A. Rather, MD - Graduate Medical Education Chair, Bayhealth	22
DIMER Profiles	
Leadership Profile	
Janice E. Nevin, MD, MPH - President and CEO, ChristianaCare	24
Student Profiles	
Trevor Maloney	25
Nick Jennelly	25
Omneya Ayoub	25
Alumni Profiles	
John F. Glenn, III, MD - Physican and DIMER Board Member	26
Scott A. Hammer, MD - Family Medicine, Milford, Delaware	26
Cindy W. Siu, MD, MS - Family Medicine, Bayhealth	27
• <i>DIMER by the Numbers</i>	
All-time Statistics Infographic	28
Medical Specialty Infographic	29
Retention Infographic	30
• <i>Attracting and Retaining DIMER Graduates</i>	31
Elisabeth Scheneman, MA - Executive Director, Delaware Health Care Commission	
• <i>Cost of Medical School</i>	
Standard Budget, SKMC	32
Standard Budget, 1970	32
Standard Budget, PCOM	33
Student Debt Snapshot	33
• <i>DIMER Health Panel Events</i>	
Pamela Gardner, BS - Program Manager, Delaware Health Sciences Alliance	34
• <i>DIMER Student and Alumni Engagement</i>	36
Pamela Gardner, BS - Program Manager, Delaware Health Sciences Alliance	
• <i>DIMER Directory</i>	37
• <i>Current DIMER Students</i>	47



Delaware Institute for Medical Education and Research

## 50<sup>th</sup> Anniversary Report Executive Summary

### History and Background

The Delaware Institute of Medical Education and Research (DIMER) was founded in 1969, as an alternative to an in-state medical school, to address the concern of access to high-quality medical education for Delaware residents. Upon creation, DIMER formalized a relationship with Thomas Jefferson University for 20 admission slots for Delawareans at Jefferson Medical College (now Sidney Kimmel Medical College (SKMC)). In 2000, DIMER expanded its education relationships to include the Philadelphia College of Osteopathic Medicine (PCOM), further increasing access to medical education for Delawareans. PCOM originally held five admission slots for qualified Delaware applicants; in 2019, the number of admission slots was increased to ten. DIMER is incredibly grateful to both institutions, who accept qualified Delawareans into their respective medical education programs and provide the highest quality training to future physicians.

### The DIMER Advantage

Of the 151 medical schools listed by the Association of American Medical Colleges (AAMC), 120 have more in-state students than out of state students. As a state with no medical school, this would ordinarily present a disadvantage for Delaware residents seeking medical education, and future careers in medical professions. However, through its relationships with SKMC and PCOM, Delaware has secured a minimum number of slots for qualified Delaware applicants. On average, SKMC and PCOM each receive an estimated 10,000 applications per year for ultimately no more than 280 slots per respective institution. As a DIMER applicant, Delaware resident applications are pulled from the overall application pool and evaluated only against Delaware applicants. Being one out of 90-100 significantly improves an applicant's odds of receiving one of the 30 or more slots for Delaware matriculants. To date, SKMC has matriculated 949 Delawareans and PCOM has matriculated 225 Delawareans for a total of 1,206 DIMER students. DIMER provides one of the best medical education admission advantages in the country for qualified applicants from the First State.

### Delaware Branch Campus and Residency

DIMER is not only focused on providing medical education opportunities for Delawareans, but also in the retention of Delaware physicians to serve our communities. DIMER's relationships extend beyond its education partners and into Delaware's health systems. DIMER medical students at SKMC and PCOM have an opportunity to conduct their third- and fourth-year rotations at the Delaware Branch Campus. The Delaware Branch Campus provides medical students clinical training at ChristianaCare, Nemours / A.I. duPont Hospital for Children and the Wilmington VA Medical Center. PCOM clinical rotations have recently grown to also include Bayhealth's Kent and Sussex Campuses.

In addition to providing medical education opportunities, ChristianaCare and Nemours / A.I. duPont Hospital for Children offer an array of residency opportunities. Delaware residency match opportunities are not limited to Delaware Branch Campus partners, as Saint Francis also has a residency program, and Bayhealth will launch its residency program in 2021. Meanwhile, other health systems are also exploring graduate medical education options for the future. The range of options will provide increased opportunity for Delawareans to complete their medical training and serve their community in their home state.

### **Abstract Data and Outcomes**

Since 1969, DIMER has matriculated 1,206 Delaware Students with 949 students to SKMC and 225 students to PCOM. Of the 1,206 DIMER students, 729 are male with 477 females represented. As we look at DIMER students by county: 680 originated from New Castle County while Kent and Sussex Counties were represented by a combined total of 465 students. For those Delaware medical students who have graduated from SKMC and PCOM, 334 went into primary care and 645 have gone into a specialty care. To date, the total number of DIMER students that have returned to practice in the First State is 229. Twenty percent have stayed to practice in Delaware, while 33.9% have ever practiced in Delaware (i.e. 13.9% of the 33.9% ultimately practiced elsewhere). The full DIMER Anniversary Report details data on the significant impact that DIMER and partners are making for the First State.

### **DIMER Board Activity for 2019**

The DIMER Board was quite active in 2019. The Board of Directors met three times, and had many accomplishments spanning the year. The DIMER Board was instrumental in successfully securing additional state funding to increase the minimum number of Delaware admission slots at PCOM from five to ten, increasing access to high-quality medical education for Delaware applicants.

The DIMER Board recognizes the high cost for medical education and enormous debt students face upon graduation. The DIMER Board also recognizes that the current Federal-State Student Loan Repayment Program contains specific requirements for participation and funding. As such, the Board is working closely with the Delaware Health Care Commission (DHCC), Delaware Legislators, and partners such as the Delaware Health Sciences Alliance (DHSA), to create a Delaware Student Loan Repayment Program. This would provide for increased participation and funding support for those physicians with Primary Care focused specialties and serving in geographic areas of need throughout the State of Delaware.

Relationships are the foundation on which DIMER is built, including relationships with its educational and clinical partners, as well as with students, alumni and prospective students, families and alumni. Through its contractual partnership with DHSA, DIMER has implemented a robust strategy for engagement with DIMER students, alumni and the general community.

While DIMER's charge is to ensure access to quality medical education for Delaware residents, DIMER's mission and values extend beyond access. DIMER and its partners are committed to providing a network of support for its students and engaging students throughout the academic year in a variety of ways. The DIMER-DHSA partnership has resulted in providing personal letters to each student at the beginning of each academic year; co-hosting receptions with PCOM and SKMC for DIMER students to network with DIMER and institutional leadership; co-hosting a graduation reception with the Delaware Branch Campus for graduating students; and conducting participatory panels in every county with prospective students and families to discuss the many benefits of DIMER.

# Delaware Institute for Medical Education and Research

## Executive Summary, continued

In 2019, the DIMER and DHSA leadership participated in and was represented at outreach events for current Delaware high school students interested in future medical professions in New Castle, Kent and Sussex Counties. Hosting outreach events for students and families is key to DIMER's future success. Ensuring Delaware students understand the opportunities that are available to them through DIMER's partnerships will help increase the qualified Delaware applicant pool, and ensure Delaware is well-represented from all three counties. Our outreach events provide an opportunity for students to hear from panels of experts including DIMER leadership, current DIMER medical students, DIMER alumni, DHSA leadership, and practicing physicians, as well as representatives from all our medical education partners and admissions offices. The panels provide insight into the DIMER program and admissions advantage for Delaware residents, recommendations for undergraduate studies, the application process for medical school, as well as the journey from medical student to resident to practicing physician. DIMER is optimistic that through continued partnership, outreach and engagement, more Delawareans will seek high quality medical education opportunities from our exceptional partner institutions.

### **Conclusion**

Since 1969, the DIMER program has represented an incredible value for medical education in Delaware. The full anniversary report contains detailed information on demographics and data on DIMER graduates, as well as personal stories from state and institution leadership, including several DIMER alumni. DIMER's approach to partnering with the DHSA, health systems and others has resulted in a robust array of services intended to facilitate a Delawarean's pathway to medical school and improved chances of them returning to Delaware to practice needed specialties in their home communities. There remain important areas of investment, such as more robust student financial support. We are confident that with the support of the State and our many partners, we can improve healthcare access for our communities with the best-trained medical workforce anywhere. We are grateful to all who support DIMER.

# Kara Odom Walker, MD, MPH, MSHS

## Secretary of the Delaware Department of Health and Social Services

**For 50 years**, the Delaware Institute of Medical Education and Research program (DIMER) has offered qualified residents of Delaware, a state with no medical schools of its own, the opportunity to receive a quality medical education.

Created in 1969 as an alternative to a state-supported medical school, the DIMER program sets aside 20 admission slots for Delaware residents to attend Sidney Kimmel Medical College at Thomas Jefferson University in Philadelphia, and 10 admission spots for Delawareans at Philadelphia College of Osteopathic Medicine (PCOM). These are the minimum number of slots reserved for qualified first year applicants from Delaware and the schools often accept more, resulting in the two colleges functioning as Delaware's medical schools.

As a former DIMER student myself and now the Cabinet Secretary for Delaware's Department of Health and Social Services and a practicing family physician, I know our state needs more doctors, especially primary care doctors. A study by my department and the University of Delaware showed there has been a six percent decline in the number of primary care doctors in the state since 2013 even as our state's population continues to age, creating a need for even more physicians.

That's why we are thankful for the benefits the DIMER program is providing.

Since 2012, both Thomas Jefferson University and the Philadelphia College of Osteopathic Medicine have accepted more students than they committed to accept. Thomas Jefferson's Sidney Kimmel Medical College accepts an average of 24 to 29 Delaware students each year. The acceptance rate for Delawareans was over seven times higher than that for non-Delawareans. The Philadelphia College of Osteopathic Medicine meanwhile is accepting 16-34 Delaware residents to its Medical School each year. The acceptance rate for Delawareans was over 11 times higher than for non-Delawareans.

DIMER is not only achieving its objective of enabling access to medical school for qualified Delaware residents, a review of graduates from Delaware to determine how many returned to the state to practice shows that 33.9% of Jefferson DIMER students and 31.1% of Philadelphia College of Osteopathic Medicine DIMER students were found after residency training to have had a license to practice medicine in the state. The overall return rate is 33.6%.

Programs are underway to further enhance this strong return rate, allowing DIMER students to receive significant parts of their training in Delaware.

I look forward to seeing what the next 50 years bring.

Kara Odom Walker, MD, MPH, MSHS



DELAWARE HEALTH AND SOCIAL SERVICES



# Welcome

Nancy Fan, MD, Chair

Delaware Health Care Commission



As written in our mission statement, the Delaware Health Care Commission “strives to foster initiatives, design plans, and implement programs that promote access to high-quality affordable care, improve outcomes for all Delawareans, and foster collaboration among the public and private sectors regarding health care.” During my chairmanship, building a sustainable health care workforce for optimal access to health care for all Delawareans has become a priority initiative for DHCC. When the DHCC assumed the administrative responsibility for the Delaware Institute of Medical Education and Research in 1996, it began a productive and meaningful collaboration to achieve this goal. As a crucial leg in a multi-prong approach, DIMER has provided for hundreds of students from Delaware the opportunity to attend medical school with in state admissions acceptance, despite not having a medical school in Delaware. The recent “2019 Healthcare Workforce Study” by Dr. Tom Ferry, demonstrated the benefits of the admissions partnership with Sidney Kimmel Medical College and the Philadelphia College Osteopathic Medicine for Delaware students.

With DIMER as a successful foundation, the other “legs” for recruiting and retaining physicians in Delaware have been expanded by the exposure for medical students to Delaware through the graduate medical education residency programs, at the Delaware Branch Campus at ChristianaCare; and the soon to be established programs at Bayhealth. While Delaware has also benefited from a federal Student Loan Repayment Program (analyzed in the “2019 Health Care Workforce Study”), recruiting and retaining physicians would be substantially enhanced with an additional state-sponsored Health Care Provider Loan Repayment Program, which has been developed in our neighboring states of Pennsylvania, New Jersey and Maryland. These programs have proven to be effective tools, and can be considered another fundamental “leg” to the overall framework of workforce retention.

Finally, I applaud DIMER for expanding its outlook and developing an initiative for greater outreach to high schools. Exposing students at an early stage of their education to the potential opportunities of a career in health care is a valuable pathway for students interested in a career in medicine but lacking resources or knowledge of the process.

As we look back on the 50 years of DIMER in this report, I know DHCC looks forward to continuing the collaborative partnership with DIMER in promoting medical education and advancing our health care workforce as we strive for access for all Delawareans.

*The Delaware General Assembly created the Delaware Health Care Commission in June of 1990 to develop a pathway to basic, affordable health care for all Delawareans.*

*The Delaware Health Care Commission embodies the public/private efforts which have traditionally spelled success for problem solving in Delaware. The Commission consists of 11 members, 5 of whom are appointed by the Governor, 1 appointed by the President Pro Tempore of the State Senate, and 1 appointed by the Speaker of the House of Representatives. Of the 5 members appointed by the Governor, at least 1 member shall be a resident of each county. The Insurance Commissioner, the Secretary of Finance, the Secretary of Health and Social Services, and the Secretary of Services for Children, Youth and Their Families or their designees shall serve as ex officio members of the Commission.*

*By creating the Commission as a policy-setting body, the General Assembly gave it a unique position in State Government. It is intended to allow creative thinking outside the usual confines of conducting day-to-day state business. The Commission is expressly authorized to conduct pilot projects to test methods for catalyzing private-sector activities that will help the state meet its health care needs. To achieve its goals, the Commission strives to balance various viewpoints and perspectives.*

*In 1996, the Commission assumed administrative responsibility for the Delaware Institute of Medical Education and Research, which serves as an advisory board to the Commission. Placing the administration of DIMER within the Commission enhanced its ability to accomplish its primary goal of providing Delaware residents greater opportunity for a medical education, while also expanding its mission to help the state meet its broader health care needs.*

*The Commission strives to balance access, quality and cost concerns, and develop recommendations that represent the best policy for the most Delawareans.*



Welcome

Sherman L. Townsend, Chair  
DIMER Board of Directors



This year the Delaware Institute of Medical Education and Research (DIMER) celebrates our 50th Anniversary. Created in 1969 as an alternative to a state medical school, DIMER provides an opportunity for Delaware residents to obtain a high-quality medical education by reserving admission slots for our qualified applicants at partner institutions; increasing the odds for acceptance of Delaware students.

Relationships and collaboration are the foundation upon which DIMER's success has been built. This year also marks 50 years of our partnership with the Sidney Kimmel Medical College (SKMC) at Thomas Jefferson University, where we have matriculated 949 Delaware students. A great deal of credit to DIMER's success goes to the father of DIMER and former Chair, Dr. Leslie W. Whitney, whose tireless efforts helped to implement DIMER and create the relationship with SKMC. This year we celebrate our 20th anniversary with the Philadelphia College of Osteopathic Medicine (PCOM) where we have matriculated 225 Delaware students to date. Special thanks and acknowledgement should go to Dr. Vincent Lobo for his assistance in creating our partnership with PCOM. I would also like to take this opportunity to acknowledge and recognize the unwavering support DIMER has received since its inception in 1969 by all serving Governors as well as many legislators who continue to champion our efforts. To date and in total, 1,206 Delawareans have entered medical school through DIMER.

DIMER is not only focused on providing medical education opportunities for Delawareans, but also on the retention of Delaware physicians to serve our communities. DIMER's relationships extend beyond our education partners and into Delaware's health systems. DIMER medical students at SKMC and PCOM have an opportunity to conduct their third- and fourth-year rotations at the Delaware Branch Campus. Led by ChristianaCare, the Delaware Branch Campus provides medical students clinical training at ChristianaCare and Nemours/Al duPont Hospital for Children. We are pleased Branch Campus relationships for PCOM have grown to now also include Bayhealth at their Kent and Sussex campuses. In addition to providing medical education opportunities, ChristianaCare and Nemours/Al duPont Hospital for Children offer an array of residency opportunities. We are optimistic of higher retention for Delaware physicians with the 2021 launch of the Bayhealth residency program, and are hopeful Beebe and Nanticoke residency programs will follow.

DIMER acknowledges the financial burden medical education presents and the current shortage of primary care physicians in the state of Delaware. DIMER is proud to be working with the Health Care Commission and Delaware Legislators in hopes of providing the 2020 Delaware Student Loan Repayment Program for use in recruiting primary care physicians to areas of need throughout the state.

One of DIMER's greatest accomplishments in recent years has been its partnership with the Delaware Health Sciences Alliance (DHSA) which affords us opportunities to enhance awareness and market medical education throughout the first state. Through our relationship with DHSA and its member organizations\*, we have conducted outreach in all three counties providing information on DIMER and our partnerships, and opportunities for Delawareans. We are confident our efforts will yield more Delawareans seeking the high-quality medical education provided by our partners, as well as retention of high-quality physicians to serve Delaware.

DIMER has much to be proud of in its quest for providing access to high-quality medical education for Delawareans over the past 50 years. However, there is still much work for DIMER to do, as we seek to not only ensure access to medical education, but also to strengthen retention of Delaware's finest physicians. We look forward to serving for you for many years to come.

*\*DHSA member organizations: ChristianaCare, Nemours/Al duPont Hospital for Children, Thomas Jefferson University, University of Delaware, Bayhealth, Delaware Academy of Medicine/Delaware Public Health Association, Philadelphia College of Osteopathic Medicine.*

## History

# The Delaware Institute of Medical Education and Research (DIMER) Celebrates Its 50th Anniversary.

Sherman L. Townsend



Samantha Bush, fourth-year PCOM

The Delaware Institute for Medical Education and Research (DIMER) was established in 1969 as Delaware's alternative to an in-state medical school.<sup>1</sup> This year marks the 50th anniversary of its founding. At its core, DIMER sought to provide access to high-quality medical education for qualified Delawareans — a mission that continues to this day.

The initial estimates for establishing an in-state medical school were in the tens of millions of dollars annually, although this estimate assumed a stand-alone medical school without necessarily leveraging the strengths of university and health system partners. Today's estimates, 50 years later, are well above \$100 million annually to establish and operate a medical school in the State of Delaware!

The longest-standing DIMER partnership is with Thomas Jefferson University's (TJU) Jefferson Medical College, now Sidney Kimmel Medical College (SKMC). The initial agreement between the State of Delaware and TJU was for a minimum of 20 annual first-year slots to be reserved for qualified Delaware students. The first class of DIMER students was admitted in the fall of 1970. Since that time, more than 1,000 Delawareans have attended that medical school through the DIMER program.

In 2000, DIMER added the Philadelphia College of Osteopathic Medicine (PCOM) as a partner, with an agreement to provide admission to at least five qualified Delawareans per year. More than 200 Delaware students have attended PCOM since 2000 through the DIMER program.

In all, since the inception of DIMER, more than 1,200 Delawareans have completed medical school at our partnering institutions. Among those students are Janice E. Nevin, MD, MPH, the President and CEO of Christiana Care Health System, and Kara Odom Walker, MD, the Secretary of the Delaware Department of Health and Social Services. Clearly, the program has made an impact across the board, including in key leadership positions.

While this program has been extremely successful, it hasn't always been without hiccups. In June of 2016, due to a budget process snafu, the funding for DIMER was eliminated on the last day of the legislative session. In a flurry of intense support from the medical community, including the Medical Society of Delaware, the Delaware Hospital Association, countless health care stakeholders, and of course the dedicated legislators who recognized the vital importance of this program, the funding was restored and DIMER continued.

In order for the DIMER partnership with SKMC and PCOM to continue to grow, more than \$1,250,000 are allocated in the state budget annually. This funding is minor compared to other states in the western part of the country that have similar programs. It is our hope that DIMER can continue to expand to open the doors to more Delaware students.

The fundamentals of the current DIMER agreement are similar to 50 years ago: a fixed amount of funding is provided by the State to partnering institutions in order to provide medical education to qualified Delawareans.

The DIMER class spanning both institutions (SKMC and PCOM) is



Left to right: Nicholas Jennelly, fourth-year SKMC; Michael Gerges, fourth-year PCOM; Navneet Mann, fourth-year PCOM

currently 39 students, the largest first-year class ever! Christiana Care Health System serves as a hub and a branch campus for SKMC and PCOM. This allows medical students to receive the second half of medical school education (third and fourth year) in Delaware. Indeed, several students who choose to come to the Delaware Branch Campus are DIMER students, but the campus is open to all students from SKMC and PCOM.

In another boon to Delaware's medical training, it was recently announced that in the summer of 2019, PCOM will begin rotations for medical students at Bayhealth, both in Dover and at the new campus in Milford. Bayhealth will also begin residencies in Family Medicine and Internal Medicine in the near future, which are expected to contribute to the Delaware workforce.

Currently, three other institutions are providing residency education in Delaware: Christiana Care Health System, Nemours, and St. Francis Hospital. Many of those entering residency in Delaware are former DIMER students, and thus they can complete the arc of their training locally.<sup>2</sup>

While an in-state medical school is how most states in the U.S. provide education, and indeed this has been discussed since DIMER's inception, it is worth noting that DIMER provides the most economical and efficient partnership model.<sup>3</sup> DIMER is Delaware's "medical school" with a current budget of less than \$2 million annually. The DIMER program and the Delaware Branch Campus program currently provide the full medical school curriculum, prior to residency.

In the last two years, DIMER (through the Delaware Health Care Commission) has partnered with the Delaware Health Sciences Alliance ([www.dhsa.org](http://www.dhsa.org)). DHSA is a non-profit alliance of major educational institutions and health systems in the region.<sup>4</sup> This partnership has allowed a renewed focus on recruiting, retention, and data gathering in order to alleviate Delaware's current and future physician workforce needs.

It should be mentioned that there are also some scholarship opportunities for qualifying DIMER students. At the time of this article, approximately \$175,000 is earmarked for small scholarships to help offset the cost of education. Discussions are underway to enhance

this program, as well as research with the Delaware Health Care Commission on how to optimize the Student Loan Repayment Program (SLRP).

## NEXT STEPS: CHALLENGES AND OPPORTUNITIES

DIMER has thus far relied on self-motivated students to apply to medical school. We have begun now to partner actively with undergraduate institutions in Delaware to recruit qualified medical school applicants. It is particularly important to the DIMER board that incoming medical school classes represent Delaware in all its diversity and geographical characteristics.

The major challenges nationwide in medical education revolve around cost. This directly affects recruitment and retention of physicians in Delaware. While there exists an SLRP, it will be



Left to right: Himani R. Divatia, DO, Associate Program Director of Med/Peds; Jack Qiu, fourth-year SKMC; Zack Lorenz, fourth-year SKMC; David Cohen, MD (Infectious Disease)

important in the future to consider tuition offsets and robust incentives to recruit and retain students in Delaware.<sup>5</sup> These programs can be tied to current specialties of need, such as primary care, women's health, and behavioral health, as well as other important emerging areas of future need such as hospital medicine and general surgery.<sup>6</sup>

It is estimated that the median debt for attending medical school was \$200,000 in 2018 and as high as \$300,000 for private medical institutions.<sup>7</sup> Currently, the Health Care Commission, DIMER, and other key health-care stakeholders are developing a new student loan repayment plan that will better meet the needs in the First State. This plan



Left to right: Anna Filip, MD; Ashley Panichelli, MD; Erin Kavanaugh, MD.

## Reflection: How the DIMER Program Shaped This Physician's Career • By Ashley Panichelli, MD

I can still remember getting the call. I was standing in the organic chemistry lab, waiting for the Organic Chemistry 1 class to finish up the reduction of an unknown compound, when I received a call from a phone number with a 215 area code. I had recently interviewed at Thomas Jefferson University's Sidney Kimmel Medical College (SKMC), and I knew I should be hearing soon about my admission status. Dean Callahan left a voicemail (that I still have to this day!) alerting me to my admission to medical school, and just like that, my medical and DIMER career began.

From the beginning of my medical journey, the DIMER program served

as a crucial ally, propelling and shaping my career. I was born and raised in New Castle, Delaware. After graduating from high school at St. Andrew's School, I traveled to Vermont to pursue my undergraduate degree at Middlebury College. As I began to investigate medical schools, I found out about the DIMER program. Through my research I learned that as a Delaware resident, the DIMER program would support me financially, while also improving my chances of getting into a medical school near my hometown. After spending time away from my community, I knew that I wanted to return home for my future education and career and, from what I could determine, the DIMER program could help me along this journey.

will assist in recruiting, retaining, and developing future Delaware physicians.

The future of DIMER remains bright and our relationship with our two medical schools is strong. As a critical program for the State and for all health providers/systems, DIMER must be maintained and strengthened. The power of partnerships spanning Delaware and Philadelphia institutions is an important one and, with new ideas and partners, shows every sign of being even more vibrant and active in the next 50 years.

The DIMER board requests the entire medical community to encourage our state leadership to support our efforts to educate Delawareans. These future physicians are the hope of our communities and the future of improved access to care and better health outcomes in our great State of Delaware.



## CONTRIBUTING AUTHORS

**SHERMAN L. TOWNSEND** is the Chair of the Delaware Institute of Medical Education and Research. He served as a trustee of the University of Delaware for 30 years and was one of the founders of the Delaware Community Foundation. He is a retired First Vice President of Merrill Lynch and resides in Dover.

**Acknowledgment**  
DR. OMAR KHAN provided helpful comments and input on a draft of this manuscript.

## REFERENCES

1. Martz EW. The Delaware Institute of Medical Education and Research (DIMER). *Del Med J*. 1975 Jun;47(6):318-21,323
2. Little BW. 100 years of Graduate Medical Education in Wilmington, Delaware. *Del Med J*. 2002 Jul;74(7):309-19.
3. Martz EW. Editorial: Should Delaware Have a Medical School? *Del Med J*. 1975 Jul;47(7):373-5.
4. Delaware Health Sciences Alliance. [www.dhsa.org](http://www.dhsa.org). Accessed May 17, 2019.
5. State Loan Repayment Program (SLRP). <https://dhss.delaware.gov/dhss/dhcc/slrp.html>. Accessed May 17, 2019.
6. DHSS Releases 2018 Study Showing a Continuing Decline in Primary Care Physicians Across the State. <https://news.delaware.gov/2019/01/02/primary-care-doctors>. Accessed May 16, 2019.
7. Budd, K. 7 Ways to Reduce Medical School Debt. Association of American Medical Colleges. <https://news.aamc.org/medical-education/article/7-ways-reduce-medical-school-debt>. October 9, 2018.

Starting from my first day at SKMC, the DIMER program was important to my development both directly and indirectly. Financially, the DIMER program helped to provide desperately needed funding for tuition. As a family medicine physician, every dollar helps. More informally, the DIMER program helped me toward my career in primary care. As a second-year medical student, my fellow students led me to discover SKMC's Delaware Branch Campus at Christiana Care Health System (CCHS). As part of the DIMER Program, I was able to complete all of my third- and fourth-year clinical rotations through CCHS.

By staying on one clinical campus, I was able to get used to one health system and electronic medical record. I was able to see patients across specialties;

I saw patients in the emergency room whom I then saw in their primary care provider's office or operating room. This experience allowed for much of the stress and worry to dissolve that normally comes with rapidly changing not only clinical rotations, but also site. I could simply take care of patients. Additionally, I got to spend time with physicians who were previous DIMER program participants and had stayed to practice locally. They were able to provide guidance beyond the subject of medical care. They welcomed me into my local medical community and helped illuminate the needs of the patients in my backyard.

Largely due to my earlier DIMER experiences, I pursued a residency in Family Medicine at CCHS. I currently practice as a primary care provider and

faculty member for the Christiana Care Family Medicine Residency Program. Through my work, I am able to take care of my community while teaching young physicians and students.

The DIMER program was crucial in my development as a clinician. As a primary care provider and Delawarean, I urge continued support of the DIMER program. We need smart, hardworking, innovative doctors to fall in love with our community, grow roots, and continue to help elevate the health of our patients and neighbors.

---

Ashley Panichelli, MD is a family physician working for the Family Medicine Residency Program at Christiana Care.

## Why DIMER Today?

Omar A. Khan, MD, MHS  
President and CEO,  
Delaware Health Sciences Alliance



On behalf of the Board of the Delaware Health Sciences Alliance, I am tremendously pleased to contribute to the creation of this landmark publication - the 50th Anniversary Report of DIMER.

As a Delawarean, I have personally seen the meaningful impact of DIMER and its partners on health throughout the First State. This includes recruitment of highly qualified Delawareans, and the provision of opportunities for medical school through two outstanding DHSA member institutions: Sidney Kimmel Medical College (SKMC) at Thomas Jefferson University and the Philadelphia College of Osteopathic Medicine (PCOM).

The Alliance was formed over 10 years ago with the mission of improving Delaware's health through partnerships between health-centered institutions. On DIMER's 50th anniversary, the DHSA is a different organization and stronger than ever. The Founding Partners of DHSA (ChristianaCare, Nemours/A.I. duPont Hospital for Children, Thomas Jefferson University and the University of Delaware) are joined now by Bayhealth, the Delaware Academy of Medicine/Delaware Public Health Association and the Philadelphia College of Osteopathic Medicine. Our leadership is collectively committed to the highest quality medical and health sciences education and programs for Delaware's benefit, and we are incredibly proud of our partnership with DIMER to help make this happen.

Over the last year, I have seen how the DIMER Board, led by Mr. Sherman Townsend, works tirelessly to advance opportunities for Delawareans. I have observed and participated in Health Care Commission meetings, led by Dr. Nancy Fan, with the aim to make our lives better and healthier. I have heard our leadership, including Governor John Carney, Lieutenant Governor Bethany Hall-Long, and Cabinet Secretary for Health & Social Services Dr. Kara Odom Walker, commit their time and energies to serving Delawareans through these programs in which we are all partners.

As an alternative to a state-based medical school, the "Delaware Medical School" is, in fact, the DIMER Program (which provides for enhanced admission to qualified Delawareans); plus the Branch Campus model (wherein students from SKMC and PCOM can carry out their entire 3rd and 4th year of medical school in Delaware institutions like ChristianaCare). Combine this with the opportunities for residency education after medical school at four Delaware institutions (Bayhealth, ChristianaCare, Nemours/A.I. duPont Hospital for Children, Saint Francis Healthcare), and loan repayment for DE practice after residency - and we have a robust program, at low cost, with tremendous outcomes.

I encourage you all to read the recent issue of the Delaware Journal of Public Health, guest edited by Secretary Walker, on Health Policy (<https://djph.delamed.org>). I hope you can attend a public meeting of the Delaware Health Care Commission and the DIMER Board. I would love for all of you to see how your colleagues and friends - all of us in these pages, and many beyond - work in partnership to provide Delawareans more choices for medical education, create more opportunities for serving Delaware as highly trained physicians, and help create a healthier Delaware for us all.

I especially want to acknowledge the leadership of the DHSA member institutions in supporting our DIMER partnership: Dr. Janice Nevin (ChristianaCare), Dr. Steve Klasko (Thomas Jefferson University), Dr. Dennis Assanis (University of Delaware), Dr. Jay Greenspan (Nemours), Dr. Jay Feldstein (PCOM), and Mr. Terry Murphy (Bayhealth).

This report would not have been possible without the expertise of Mr. Timothy Gibbs, Executive Director and Dr. Kate Smith, Program Manager, both of the Delaware Academy of Medicine/Delaware Public Health Association. The overall guidance and attention to detail provided by Ms. Pamela Gardner, DHSA Program Manager, is sincerely appreciated.

It is a joy to work with our partners at DIMER, the Delaware Health Care Commission, and the State of Delaware. Together, we are making Delaware a healthier place for us all.

Omar A. Khan, MD, MHS  
President & CEO  
Delaware Health Sciences Alliance



# Delaware Health Sciences Alliance



## Why DIMER Today?

David L. Paskin, MD, Vice Dean  
Graduate Medical Education & Affiliates  
Sidney Kimmel Medical College



Jefferson, now Sidney Kimmel Medical College (SKMC), has been the Medical College for the state of Delaware over a half a century. Along with that designation has been a close working relationship with DIMER. There have been in place various events sponsored by SKMC to ensure that DIMER students remember their Delaware roots. In recent years, a dinner with DIMER members and 1st and 2nd year students occurs every fall, shortly after the winter break. The dinner is hosted by SKMC and DIMER at our favorite Italian restaurant. Both of these events have been very successful.

For the incoming Class of 2018, we had 9,907 applications, including 79 from DIMER applicants (approximately 0.8% of the total pool). We made 457 offers of admissions last year (25 of them to Delaware residents). This means approximately 32% of the DIMER applicants received an acceptance, compared to an acceptance rate of 4.4% for the general application pool. This year, to date, we have received a total of 9,442 applications.

Although the application cycle is not complete, of the 349 offers made to date, 21 (out of the total 84 DIMER applicants, 34 of whom we interviewed) of them have been to DIMER applicants. Once again, even though the DIMER applicants only make up 0.8% of the applicant pool, they have received 6% of the total acceptances. These numbers are driven, in part, by our goal to have at least 20 well-qualified medical students from Delaware in each matriculating class. To this end, the Dean of Admissions, the Director of Admissions, and staff work closely with the members of DIMER board throughout the year.

In 2019, twelve students matched to first year postgraduate positions in Delaware, one each in internal medicine, medicine/pediatrics and psychiatry; two in emergency medicine; and three in family medicine, all at ChristianaCare. Four students matched to the pediatric residency at Nemours/Al duPont Hospital for Children. SKMC's relationship with ChristianaCare, Nemours and DIMER is in full bloom, and is poised to continue to prosper.







## Why DIMER Today?

Deborah Benvenger, MBA  
Chief Admissions Officer  
Philadelphia College of Osteopathic Medicine

Philadelphia College of Osteopathic Medicine (PCOM) has served as the official osteopathic medical school of Delaware for nearly twenty years through the partnership with the Delaware Institute of Medical Education and Research (DIMER).

Dr. Vincent Lobo (DO '65) was instrumental in facilitating and establishing the partnership between DIMER and PCOM. Although the initial state contract required PCOM hold five seats for Delawareans, we have exceeded that goal since 2007. We are proud of those results, and equally as excited for the recognition of our efforts by the State with a renewed contract providing additional funding and commitment of ten seats for Delawareans in the first year class.

The entire PCOM community is appreciative and grateful to the DIMER Chairman of the Board, Mr. Sherman Townsend, for his support and work with the legislature to create this successful outcome. We acknowledge the need for more Delawareans to return to the state and grow the physician workforce (especially primary care). PCOM is committed to our ongoing efforts to help meet those needs, with a robust recruitment initiative throughout the entire state.

By partnering with DIMER for all these years, PCOM has been able to provide high quality medical education for individuals with a passion for healthcare. It is our hope that these caring, competent students will return to Delaware to serve their hometown communities. We are excited about what the future holds as DIMER and PCOM journey together on this exciting pathway.



Photo credit: PCOM



Photo credit: PCOM

## Why DIMER Today?

### The ChristianaCare Branch Campus Perspective

Neil B. Jasani, MD, MBA, Chief People Officer

Lisa C. Maxwell, MD, MHCDS, Chief Learning Officer

ChristianaCare's strong affiliation with the DIMER program provides medical students from Delaware the opportunity to receive a high-quality medical education in partnership with Delaware's state supported medical schools, Sidney Kimmel Medical College (SKMC) at Thomas Jefferson University and the Philadelphia College of Osteopathic Medicine (PCOM). Through this partnership, ChristianaCare offers these students the opportunity to complete their 3rd and 4th year clinical rotations exclusively in Delaware at ChristianaCare, Nemours/Al duPont Hospital for Children and the Wilmington VA Medical Center through the Delaware Branch Campus.

The Delaware Branch Campus at ChristianaCare provides a unique opportunity for students to rotate at a top-rated tertiary care medical center and growing inner city community hospital. Training is offered at additional sites including the Center for Heart & Vascular Health, The Helen F. Graham Cancer Center, Women's and Children's Health Services and the Breast Center.

ChristianaCare offers a strong culture of teaching and opportunity to build community. Students are a valued team members and work directly with fully engaged faculty and residents. Students experience the opportunity to build strong interpersonal relationships and receive one-on-one mentoring with faculty and personalized Letters of Recommendation.

Our commitment to exploring the science of medicine keeps clinicians at the top of their specialties and attracts the best and the brightest to serve as faculty and mentors in our undergraduate student rotations. ChristianaCare is where tomorrow's health care providers learn state-of-the-art medical care.



**ChristianaCare**<sup>TM</sup>

Students who have participated in the Delaware Branch Campus have matched in top rated, well-established residency programs nationally in the top five specialties of family medicine, internal medicine, anesthesiology, emergency medicine and pediatrics.

Over the last eight years, we have successfully graduated eight Branch Campus classes totaling 122 students, who have completed all 3rd and some 4th year clerkships in Delaware hospitals. The Class of 2020 will graduate in May, and we will begin to prepare for the upcoming academic year (2020-21) in which 16 PCOM students will be joining the Class of 2022, as well as, six students from SKMC.

The Delaware Branch Campus is a voluntary track. It is open to all students, but priority is given to DIMER students. Of all DIMER students from 2013 projected through 2020 from SKMC and PCOM (including the class of 2020), 36% have chosen to be part of the Delaware Branch Campus.

Of all Delaware Branch Campus students from 2013 – 2020, 56% have a Delaware connection of some kind. That connection may include being a Delaware resident at time of medical school application or a University of Delaware graduate or a University of Delaware graduate who participated in the Med Scholar track.

In addition to the Delaware Branch Campus, ChristianaCare hosts hundreds of medical student rotations each year from SKMC and PCOM, as well as, many other area schools totaling over 700+ rotations. Many of these students rotating at ChristianaCare match into one of our 32 residency/fellowship programs and many of our graduating residents/fellows choose to stay and practice in Delaware.

In July 2019, we welcomed our first cohort of Physician Assistant (PA) students to the newly established “Clinical Campus” program with six PA students from SKMC and two PA students from PCOM. This program offers universities the opportunity to select participating students with roots in Delaware or interest in working in Delaware upon graduation. Every clinical campus student will rotate through each of their Core Rotations at ChristianaCare. Core Rotations include Internal Medicine, Family Medicine, Emergency Medicine, Behavioral Health, General Surgery, Pediatrics and OB/GYN. This longitudinal clinical experience will allow students to become fully immersed in the ChristianaCare culture, while gaining clinical experience. In turn, ChristianaCare will be investing their time and energy into the training of potential permanent Delaware healthcare providers.

In addition to the newly established Clinical Campus Program for PA students, ChristianaCare has long term standing relationships with affiliate programs from Arcadia University, PCOM, Thomas Jefferson University and Drexel University. ChristianaCare provides 200+ clinical rotations to PA students each year in core areas and elective specialties across the health care system.



## Why DIMER Today?

**Nemours/Alfred I. duPont Hospital for Children Campus Perspective**

**Steven M. Selbst, MD, Vice Chair for Education, Department of Pediatrics**

**Pediatric Residency Program Director, Director of Graduate Medical Education**

The Nemours/Alfred I. duPont Hospital for Children is a multispecialty, tertiary care, 200-bed free-standing children's hospital located in Wilmington, Delaware. As the only children's hospital in Delaware, our hospital offers the entire spectrum of pediatric medical and surgical subspecialties. We are fortunate to have been recognized by a variety of national organizations as a site for outstanding teaching and clinical care.

We have pooled the considerable resources of three major institutions to create exciting, high-quality programs in patient care, biomedical research, and medical education. We enjoy the strong financial backing of Nemours, the broad patient base of the Alfred I. duPont Hospital for Children and ChristianaCare, and the rich academic heritage of Sidney Kimmel Medical College (SKMC) of Thomas Jefferson University. These partnerships have enabled us to develop a unique educational program. DIMER students who train with us are able to gain a wealth of experience working with nationally-recognized physician-educators in a variety of pediatric disciplines and with patients in the hospital, clinic, and private practice settings. Students rotate through the medical/surgical units, general pediatrics clinics, newborn nurseries, and private practitioners' offices. They gain experience with the various aspects of well-child care and normal growth and development as well as common and uncommon pediatric diseases. We also offer advocacy training for students and residents to learn to become a voice for children's health in the clinical setting and the community.



For many years, the DIMER program has provided Nemours/Alfred I. duPont Hospital for Children with a wonderful resource of local trainees who are passionate about serving the population of Delaware. We are thrilled to have DIMER students from SKMC rotate with us during their clinical (third) year. We welcome senior medical students (4th year) from SKMC and the Philadelphia College of Osteopathic Medicine in a variety of clinical and research experiences. Through rotations for 3rd and 4th year medical students, we are able to introduce the students to our renowned children's hospital and expose them to the broad scope of Pediatrics.

Many DIMER students go on to pursue residency in Pediatrics at Nemours/Alfred I. duPont Hospital for Children. DIMER students who enter specialties such as Family Medicine and Emergency Medicine at local residency programs, such as Jefferson or ChristianaCare, also gain valuable pediatric training here. Several DIMER graduates of our Pediatric Residency Program have become our Chief Residents and many have pursued fellowships and attending positions here and at other prominent institutions. One has even joined our residency leadership team, helping to train the next generation of Delaware physicians! Through DIMER, we have been able to recruit physicians who go on to serve their home communities in a myriad of ways, including teaching and advocacy. We look forward to partnering with DIMER for many more years.



# Why DIMER Today?

## The Bayhealth Branch Campus Prespective

Assar A. Rather, MD, GME Chair

### Bringing Doctors to Central and Southern Delaware through UME and GME Programs

Bayhealth announced its plans to launch a residency teaching program, or Graduate Medical Education (GME), in March 2019. The announcement was an exciting one for the community and health system, as the residency training program will assist in bringing more doctors to central and southern Delaware, enhancing the culture of learning at Bayhealth, and fostering improvements to patient care and the patient experience.

As a part of our commitment to medical education, Bayhealth also partners with area medical schools to host medical students for a portion of their Undergraduate Medical Education (UME) clinical rotations. Upon graduating medical school, these students may later apply for one of Bayhealth's residency programs.

Bayhealth Surgeon and GME Chair Assar Rather, MD, FACS, FASCRS; Senior Vice President, Chief Medical Officer and Designated Institutional Official Gary Siegelman, MD; administrative leaders; and a group of more than 20 physicians worked for more than a year to establish GME. An assessment and full implementation plan was developed and outlines a proposed start date of July 2021 for family medicine and internal medicine programs, with general surgery and emergency medicine to follow in subsequent years.



In July 2019, Bayhealth was awarded a Rural Residency Planning and Development Program grant from the Health Resources and Services Administration (HRSA). HRSA awarded \$20 million in grants to healthcare systems developing new rural residency programs while applying for accreditation through the Accreditation Council for Graduate Medical Education (ACGME). Bayhealth was awarded \$750,000.

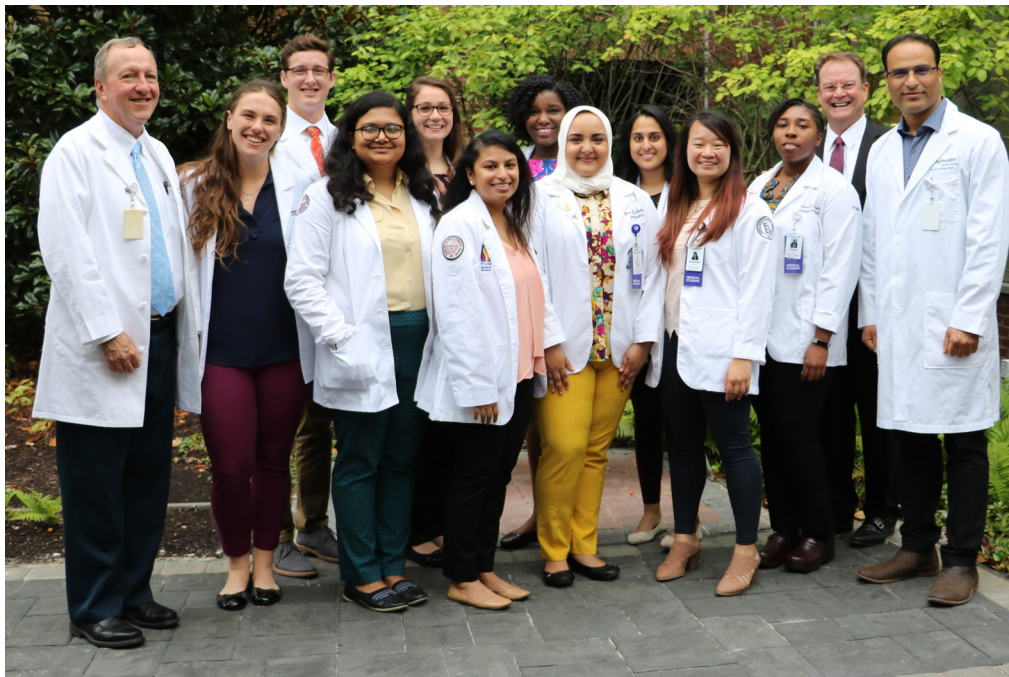
The application for the Family Medicine Residency program was submitted in August 2019, with a site visit by the ACGME in October. Family Medicine Residency Program Director Brintha Vasagar, MD, MPH, FAAFP, is working on faculty and curriculum development in anticipation of welcoming eight residents in 2021. Ahead of the start of the program, Bayhealth will open a new family medicine outpatient clinic in Dover where residents will care for patients under faculty supervision. This practice is estimated to bring more than 30,000 full-spectrum primary care visits, including adult, pediatric, and obstetric care, per year to the community.



The Internal Medicine Residency Program continues to progress as well with a program director beginning at Bayhealth in early 2020. The Internal Medicine Residency program application was submitted to ACGME in November 2019 with a site visit expected in February 2020. The program will appoint at least 10 residents in its first year. These residents will care for inpatients at Bayhealth’s two hospital campuses – Bayhealth Hospital, Kent Campus in Dover and Bayhealth Hospital, Sussex Campus in Milford. Residents will have an opportunity to work alongside faculty to develop skills, knowledge and expertise necessary to become outstanding physicians.

Future plans include developing the family medicine residency practice, internal medicine residency practice, resident call rooms and lounges, lecture halls and education facilities, and a new medical staff lounge all to make the experience for the residents worthwhile.

“This is truly an exciting time for Bayhealth as we look toward our future,” said Senior Vice President, Chief Medical Officer and Designated Institutional Official Gary Siegelman, MD. “These medical education programs are an investment not only in Bayhealth’s future, but in southern Delaware’s communities as well.”



# DIMER Alumna Profile

Janice E. Nevin, MD, MPH  
President and CEO  
ChristianaCare



## How did your journey as a DIMER student affect your educational trajectory?

I am forever grateful for the opportunity to go to Jefferson, now Sidney Kimmel Medical College (SKMC), one of our nation's leading medical schools, as a DIMER student. Today, I'm proud to lead an organization that supports the educational journey of future physicians, including DIMER students – it allows me to pay that gratitude forward.

## What do you most enjoy as a Physician Executive in Delaware?

As ChristianaCare moves from health system to a system that truly impacts health, we are committed to excellence in all that we do. As such, we are deeply embedded in our community and are investing in the health of those who live here. We are truly living the ChristianaCare Way – serving our neighbors as respectful, expert, caring partners. As someone who has lived most of my life in Delaware, the opportunity to positively impact the health of every community within our state and the surrounding region is a remarkable privilege and one of the aspects of my role I enjoy most.

## In your opinion, what is most important to retaining Delaware talent in the field of healthcare?

As a community based academic health system, we have a deep interest in developing young physicians and other health professionals who want to become part of the Delaware medical community. The fact that students who study here at ChristianaCare have access to regional centers of excellence and nationally recognized peers and mentors is important to retention efforts. Our partnership with DIMER plays a key role in attracting and recruiting students who are already Delawareans. The presence of learners in our system, also means we attract and retain outstanding clinical faculty who come from all over the country.

## In the absence of a 'state medical school', how can DIMER best be leveraged for all Delawareans to benefit?

The Delaware Branch Campus for SKMC and PCOM students is Delaware's medical school and provides a Delaware-based medical education for many students, including many DIMER students. The two plus years these students spend with ChristianaCare and Nemours provide a strong foundation of knowledge and hands-on experience to help them build a successful career impacting the health and wellbeing of our neighbors and our communities. Quite simply, DIMER's initial support of students from Delaware has a positive long-term impact that supports the health of all Delawareans.

## How invested should the state's health systems be in medical education?

ChristianaCare is already heavily invested in supporting both undergraduate medical education and graduate medical education. In addition to the Delaware Branch Campus, ChristianaCare provides over 700 core clerkships for medical students from SKMC, PCOM, and other medical schools from across the country. In addition, we have 32 residency and fellowship programs with over 270 residents and fellows training with us every year. With our unique, data-powered care coordination service and a focus on population health and value-based care, we are shaping the future of health care and remain focused on training the next generation of health leaders to support new opportunities to provide innovative, expert care to those we serve.



## DIMER Medical Student Profiles

*"As a life-long Delawarean, I am proud to represent the First State as a DIMER medical student at the Philadelphia College of Osteopathic Medicine. The DIMER program has given me an incredible opportunity to attend a fantastic medical school in Philadelphia. However, DIMER is much more than just a program to get Delaware students to medical school. The DIMER program advocates for each Delaware student at PCOM and Sidney Kimmel Medical College to ensure that we are provided invaluable opportunities as students at these institutions. DIMER invests in the Delaware students and encourages us to challenge ourselves in our education and aspire to return to serve the communities that we grew up in. For me, I am honored to represent this program, and I brag about it often. I am thankful for this opportunity to attend PCOM and long for the day when I can return to Delaware as a practicing physician."*



**-Trevor Maloney**  
**Medical Student, PCOM**



*"DIMER has been a part of my life for the past three years, where I developed new friendships and have become a mentor to younger generations in Delaware. The organization has allotted me the opportunity to pursue a career in medicine as a Delaware resident. Through DIMER I have gained the knowledge about residency programs and am better prepared to apply in the coming year. I am thankful for their continuous support and ample networking events to meet and connect with prestigious mentors in Delaware."*

**-Omneya Ayoub**  
**Medical Student, PCOM**

*"As both a graduate of the Medical Scholars Program at the University of Delaware and a DIMER student, I have been blessed with the opportunity to pursue my dream of becoming a doctor. I am grateful for all the resources and support DIMER has provided Delaware students over the last 50 years and look forward to being a part of the next generation of physicians in the state."*

**- Nicholas Jennelly**  
**Medical Student, SKMC at Thomas Jefferson University**



## DIMER Alumni Profile

### John F. Glenn, III, MD

Delaware is one of four states that does not have a state-sponsored medical school. In 1969, DIMER was created. Twenty positions were reserved at Sidney Kimmel Medical College for Delaware residents, thereby affording an opportunity for medical education. Later, 10 positions at the Philadelphia College of Osteopathic Medicine were added. I was privileged to be selected as one of the students for the class of 1974 at Sidney Kimmel Medical College.

I was born and raised in Milford, attended Milford High School, and attended the University of Delaware. At the end of my junior year I was selected to be admitted to the first DIMER class. I firmly believe that DIMER increased my chances of being accepted to medical school. DIMER placed no obligation for returning to practice in Delaware but, even today, it is hoped that the students will return and practice in the state.

After graduation I completed residencies in General Surgery and then Cardio-Thoracic Surgery. Unfortunately, at that time, cardiac surgery was not available to people in lower Delaware. After nine years practicing in Pittsburgh, I realized that I missed living in lower Delaware and near "the beach." I then joined the staff at Bayhealth Medical Center in Dover. I have practiced surgery there for the past 30 years. Several years ago I retired from surgery and am now the Medical Director of the Wound Care Center at Bayhealth.



DIMER afforded me the opportunity to attend medical school and pursue a career in surgery. This program is an asset for any Delaware resident hoping to become a physician. The odds of acceptance into medical school are enhanced because of this program. Now, as a board member, I realize that the scope of DIMER goes beyond securing positions for medical school. It's also involved in loan re-payment. More recently, informational programs are being presented in the communities to increase Delawarean's awareness of DIMER. I would encourage any resident wishing to pursue a career as a physician to avail themselves of this program.



## DIMER Alumni Profile

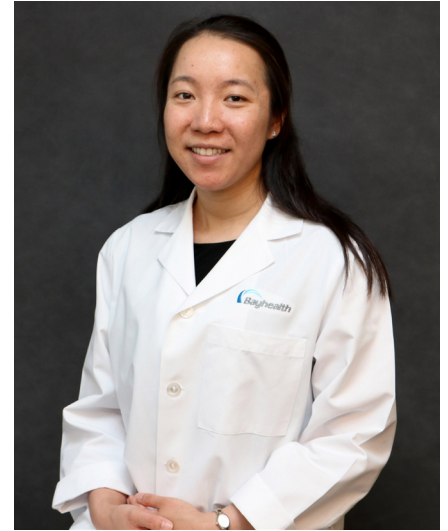
### Scott A. Hammer, MD

*"Thank you to DIMER, and especially to Mr. Sherman Townsend, for helping me to realize my dream of practicing primary care here in Central and Southern Delaware. More than 20 years after beginning my medical education at Jefferson Medical College (now Sidney Kimmel Medical College), I feel humbled and immensely fortunate to be providing family medicine and hospice care to the residents of the same community in which I was born and raised. My family and I are forever grateful."*

*“So, what brought you to Delaware?”*

When I meet new patients in my office, many of them ask me this question.

I was raised in Dover, Delaware where I learned first-hand the value of hard work while growing up in the kitchen of my family's Chinese restaurants. I watched my parents work tirelessly to provide my brother and me with better opportunities than they had. My interest in medicine began at an early age through deep admiration for the pediatricians and family medicine physicians who took care of me. After graduating from high school at Saint Thomas More Academy, I went on to pursue my undergraduate degree at Bucknell University and then my graduate degree at Columbia University. While applying to medical school, I considered schools along the entire East Coast, but my top choice was Jefferson Medical College (now Sidney Kimmel Medical College).



From my very first steps into my medical career, the DIMER program has played an integral role. By partnering with Sidney Kimmel Medical College (SKMC) and Philadelphia College of Osteopathic Medicine (PCOM), DIMER supports Delaware residents in obtaining a high-quality medical education. This support from DIMER comes in multiple forms. First, DIMER increases the odds of acceptance for Delaware residents into SKMC or PCOM. Second, DIMER provides financial support throughout the four years of medical school. Third, DIMER provides invaluable opportunities for networking and mentorship with practicing physicians who have already gone through the DIMER program.

While applying for family medicine residency, I again considered programs along the entire East Coast, but my top choice was the ChristianaCare Family Medicine Residency Program. I knew it was a great program while I was there, but the true value is the confidence that I have in providing primary care services in my own practice once I graduated from residency. My mentors in residency shaped who I am as a physician. I am grateful for my residency training in Delaware that provided me with the skills and knowledge to practice family medicine where I am today.

I currently provide outpatient primary care services to individuals of all ages at the Bayhealth Primary Care Milford - Airport Road office. I also take care of newborns delivered at the Bayhealth Sussex Campus Hospital. During Delaware's growing season, I work with the Westside Family Healthcare outreach team on a mobile health unit that provides primary care services to migrant and seasonal agricultural workers in Kent and Sussex Counties. I have particular interests in global health, refugee and immigrant health, primary care for underserved populations, community outreach, and patient advocacy.

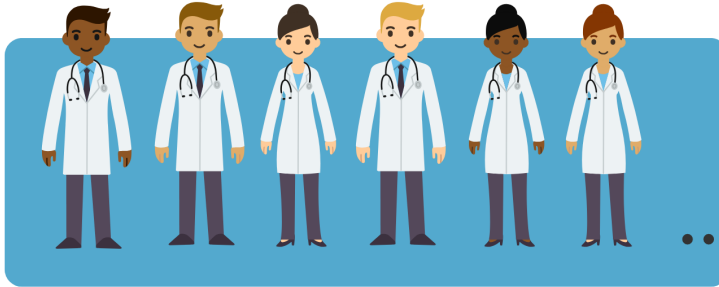
I am very fortunate to be in the position that I am in now, and I could not have made it here without the support of my family, the experiences in my local community, and the opportunities afforded by the DIMER program. DIMER has allowed me to go to medical school, complete my residency training, and now practice family medicine – all close to home. DIMER invests in the talent within our own state. This is urgently needed especially in Kent and Sussex Counties where the number of primary care physicians continues to decline. So when my patients ask what brought me to Delaware, my answer is simple - I grew up here and am passionate about giving back to the community that raised me.

# DIMER by the Numbers



## DIMER ALL-TIME STATISTICS

**Sidney Kimmel Medical College (joined 1970)  
(formerly Thomas Jefferson Medical College)**



**949**  
Doctors (MD)

**Pennsylvania College of Osteopathic Medicine  
(joined 2000)**



**225**  
Doctors (DO)

### Diversity based on gender (all time)

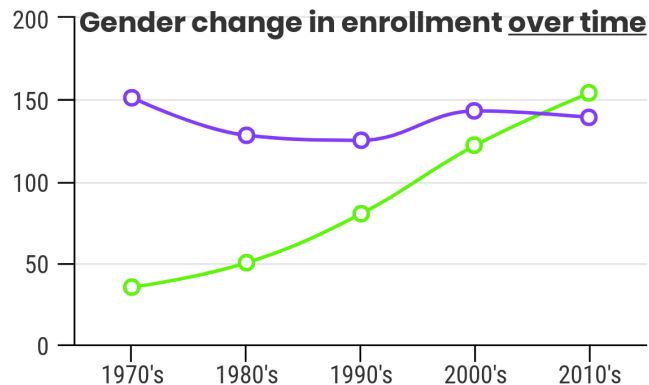


477



729

### Gender change in enrollment over time



SOURCE: Study by Tom Ferry commissioned by the Delaware Health Care Commission

# Medical Specialty

Source: Report commissioned by Delaware Academy of Medicine / Delaware Public Health Association and the Delaware Health Sciences Alliance for a separate project and provided here as a courtesy. Joint Copyright © 2020, all rights reserved.



DELAWARE  
ACADEMY of  
MEDICINE



Delaware Health Sciences Alliance

## About this infographic

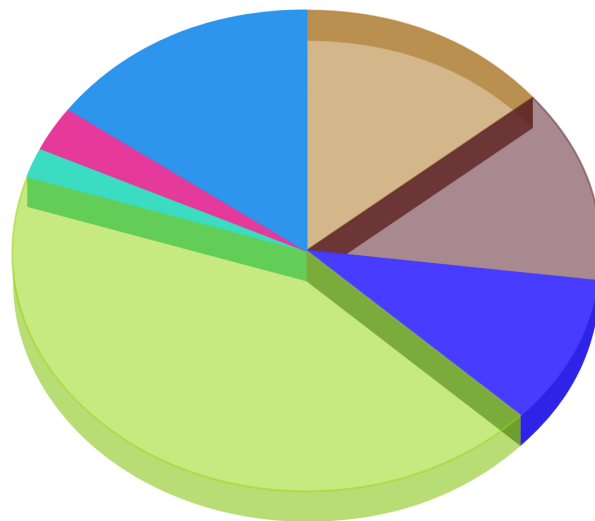
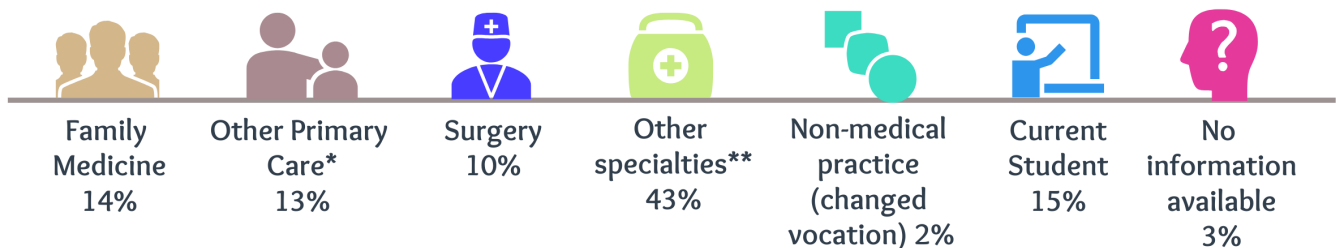
Below are a line and pie chart of the different major medical specialty categories that students entered into after completing medical school.

## Definitions

**Family medicine** is the medical specialty which provides continuing, comprehensive health care for the individual and family. It is a specialty in breadth that integrates the biological, clinical and behavioral sciences. The scope of family medicine encompasses all ages, all genders, each organ system and every disease entity. Source: <https://www.aafp.org/about/policies/all/family-medicine-definition.html>

**Primary care** is that care provided by physicians specifically trained for and skilled in comprehensive first contact and continuing care for persons with any undiagnosed sign, symptom, or health concern (the "undifferentiated" patient) not limited by problem origin (biological, behavioral, or social), organ system, or diagnosis. Source: <https://www.aafp.org/about/policies/all/primary-care.html>

## What Type of Medicine are DIMER Graduates Practicing? (ALL TIME DATA)



- Family Medicine
- Other Primary Care
- Surgery
- Other specialties
- Non-medical practice
- No information available
- Current students

\* Other Primary Care includes: OB/GYN, Pediatrics, Preventive Medicine, and Psychiatry.

\*\*Other Specialties include: Addiction, Anesthesiology, Cardiology, Critical Care, Dermatology, Emergency Medicine, Endocrinology, Ear/Nose/Throat (ENT), Gastroenterology, Genetics, Hematology, Hospitalist, Immunology, Infectious Disease, Internal Medicine, Maternal & Fetal Med., Neonatal Med., Nephrology, Neurology, Nuclear Med., Oncology, Ophthalmology, Orthopaedics, Pathology, Physical Med., Pulmonology, Radiology, Rheumatology, Sports Medicine, Transitional Year, and Urology.

# DIMER by the Numbers



## Retention

of DIMER physicians who return to live/work in Delaware and surrounding states

1

1206 DIMER Students since program inception

- SKMC at Thomas Jefferson joined in 1970
- PCOM joined in 2000

2

229 Returned to Delaware

- New Castle County 176
- Kent County 16
- Sussex County 37

3

347 Returned to surrounding states

- Maryland 53
- New Jersey 45
- Pennsylvania 249

4

104 Stayed in the Mid-Atlantic area

- District of Columbia 10
- New York 47
- Virginia 47

5

345 Settled Elsewhere in the United States (Top 4)

- California 40
- Florida 45
- North Carolina 32
- Texas 21

6

3 Left the United States

- Australia 1
- Germany 1
- Korea 1

Source: Report commissioned by Delaware Academy of Medicine / Delaware Public Health Association and the Delaware Health Sciences Alliance for a separate project and provided here as a courtesy. Joint Copyright © 2020, all rights reserved.



DELAWARE  
ACADEMY of  
MEDICINE

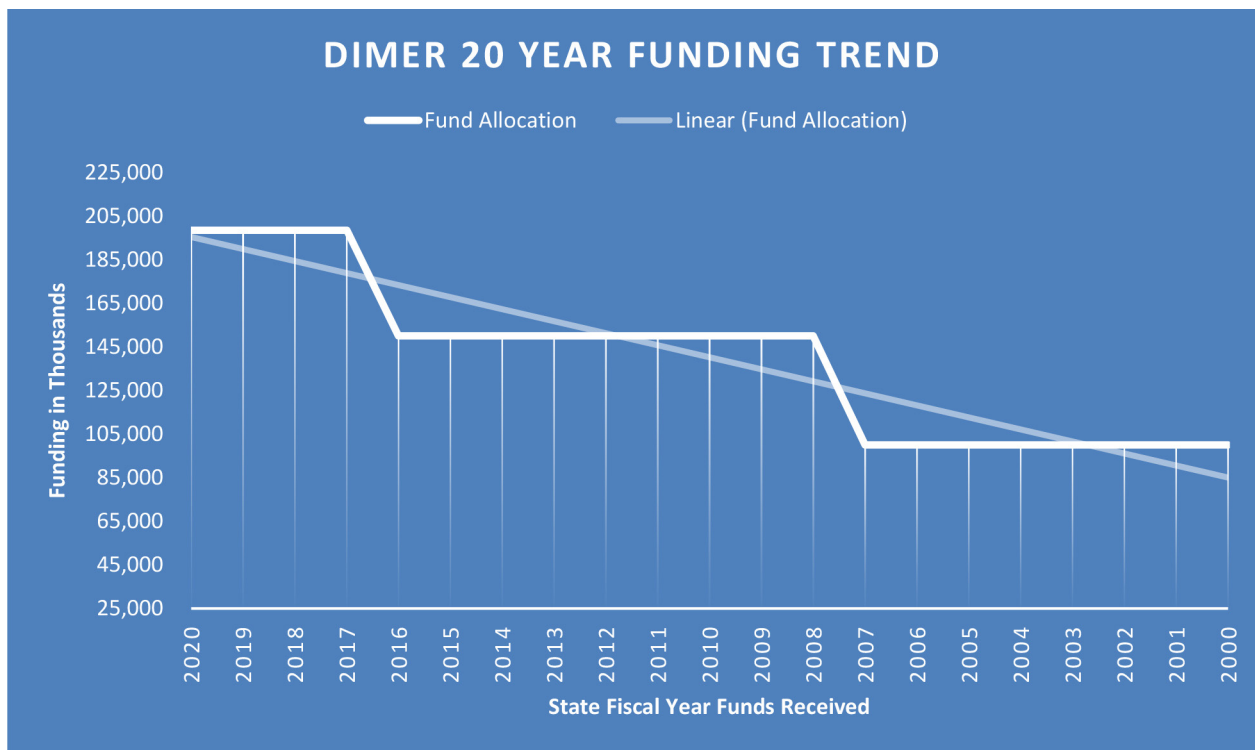


Delaware Health Sciences Alliance

# Attracting and Retaining DIMER Graduates

Elisabeth Scheneman, MA, Executive Director  
Delaware Health Care Commission

The Delaware Health Care Commission administers a State Loan Repayment Program (SLRP) that provides financial assistance to medical and dental practitioners employed in underserved regions of Delaware, for accrued educational debt. Since 2000, the U.S. Department of Health and Human Services, Health Resources and Services Administration (HRSA) has provided 50% of funding needed for this program, through competitive multi-year grant awards. The remaining 50% is provided by the State of Delaware, General Assembly on behalf of Delaware Institution of Medical Education and Research (DIMER) and through collaborations with health-care institutions. Over the 20-year history of the Federal program in Delaware, DIMER has provided funding in support of loan repayments as follows:



*“From 2012 to 2019 (year-to-date), Delaware has made 59 loan repayment awards for a total of \$2,529,000. Of the 44 awards for which the service commitment has been completed, 40 awardees are providing services in Delaware, 3 are working outside of Delaware, and 1 could not be located. With 40 of the 43 located providers working in Delaware, that is an exceptionally strong 93% retention rate. . . The 93% retention rate following completion of the SLRP service commitment appears to be very strong. No comparison data in other states was located. However, the 93% retention clearly indicates the success of Delaware SLRP and argues for possible expansion and additional funding.”*

- Star-Med, LLC  
Report commissioned by the DHCC

## Standard Budget

### Sidney Kimmel Medical College at Thomas Jefferson University

#### Allopathic Medicine (MD)

Year	1	2	3	4
Tuition	\$55,464	\$55,464	\$55,464	\$55,464
Library and Tech Fees	\$890	\$890	\$890	\$890
Books and Supplies	\$1,060	\$725	\$925	\$625
Instruments*	\$249	\$20	-	-
Room and Board	\$17,567	\$17,567	\$19,164	\$17,567
Transportation	\$500	\$500	\$2,292	\$2,101
Medical-Dental (out of pocket)	\$450	\$450	\$485	\$450
Major Medical Insurance**	\$0	\$0	\$0	\$0
Residency Application/Travel	\$0	\$0	\$0	\$1,250
Miscellaneous ***	\$1,375	\$1,980	\$3,462	\$1,375
Estimated Loan Fees	\$480	\$480	\$504	\$480
Total Estimated COA*	\$78,035	\$78,076	\$83,186	\$80,202

\*Cost of Attendance

## Standard Budget in the 1970's

Below are some comparative costs, in Philadelphia, in the early 1970s, for a medical school education.<sup>1</sup>

Tuition	\$2,450
General Fee	\$ 300
Room and Board	\$1,250
Books and equipment	\$150
Personal expenses	\$550

1. Downloaded from <https://archives.upenn.edu/exhibits/penn-history/tuition/tuition-1970-1979>



# Standard Budget

## Philadelphia College of Osteopathic Medicine

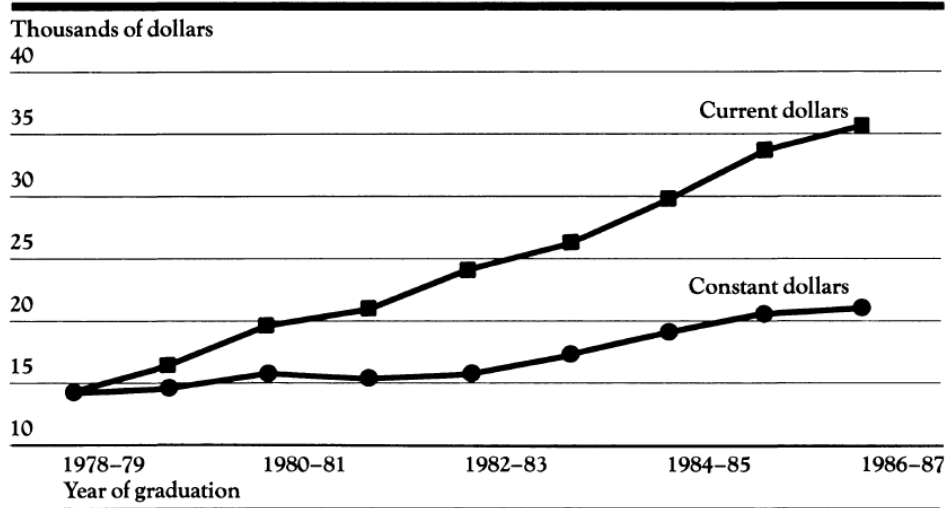
### Osteopathic Medicine (DO)

Year	1	2	3	4
Estimated tuition <sup>1</sup>	\$51,972	\$51,972	\$51,972	\$51,972
School fee	\$750	\$750	\$750	\$750
Room, board and utilities	\$17,325	\$17,325	\$23,100	\$23,100
Books and supplies	\$501	\$600	\$1,000	\$500
Instruments and equipment	\$201	\$201	\$300	-
Board exam	-	\$660	\$660	-
Personal	\$1,800	\$1,800	\$2,400	\$2,400
Transportation	\$1,350	\$1,350	\$3,000	\$3,000
Health insurance <sup>2</sup>	\$1,800	\$1,800	\$2,400	\$2,400
Federal Stafford loan fees	\$432	\$432	\$500	\$500
<b>Total Estimated COA*</b>	<b>\$76,131</b>	<b>\$76,890</b>	<b>\$86,082</b>	<b>\$84,622</b>

\*Cost of Attendance

## Student Debt Snapshot

**Mean Debt Of Indebted Medical School Graduates, Current And Constant (1978)  
Dollars, 1978–1979 Through 1986–1987**



Source: Association of American Medical Colleges, Graduate Questionnaire.

# DIMER Health Panel Events

**Pamela Gardner, BS, Program Manager**  
**Delaware Health Sciences Alliance**

The Delaware Institute for Medical Education and Research (DIMER) is committed to providing access to high-quality medical education for Delawareans and ensuring awareness of the admissions advantages for all Delawareans. Through its partnership with DIMER, the Delaware Health Sciences Alliance (DHSA), has implemented a robust strategy for engagement and outreach within the Delaware community. This strategy includes informative outreach events targeted to high school and early undergraduate students in all of Delaware's counties. This is unprecedented in DIMER's 50-year history.

We recognize that access to information and knowledge are powerful drivers of motivation. By creating awareness and informing Delaware students of their state's DIMER opportunities, we are empowering students to pursue their passion and interests in medicine. We are especially interested in serving those who may not have otherwise had opportunity to hear about these possibilities.

At our outreach events, we provide students valuable exposure to experts from across DIMER and DHSA. Panelists include DIMER leadership/Board, current DIMER medical students, DIMER alumni and practicing physicians, as well as leadership and admissions representatives from DIMER medical education partners Sidney Kimmel Medical College at Thomas Jefferson University (SKMC) and the Philadelphia College of Osteopathic Medicine (PCOM). The panel provides insight on the DIMER program and admissions advantages for Delaware students, recommendations for undergraduate studies, the application process for medical school, as well as the journey from medical student to resident to practicing physician. We also provide information on affordability of medical school and the options beyond, such as the Student Loan Repayment Program (SLRP) and other loan opportunities.

In 2019, DHSA hosted four DIMER outreach events targeting high school and early undergraduate students interested in future medical studies and professions. The events were held throughout Delaware and provided the opportunity for students in New Castle, Kent and Sussex counties to attend an event in proximity to their location within the state, making the events accessible for all. DHSA partnered with Delaware State University to host two outreach events at their Dover Campus, and DHSA member institution Bayhealth hosted the Sussex County outreach event at its Milford Campus. Events in all counties were extremely interactive and well attended by students and their families.



In collaboration with the DIMER Board, DHSA has implemented a post event survey to measure the impact of DIMER outreach programs. Early survey results show that prior to outreach events, 89% of respondents had no previous knowledge of DIMER, and 94% of respondents had not considered DIMER institutions prior to the event. After our education and outreach, 100% of respondents indicated knowledge of DIMER, and intent to include SKMC and PCOM among their future applications.

We believe that through the DIMER-DHSA collaboration, more Delawareans will seek high quality medical education opportunities through DIMER partner institutions. We believe that increasing knowledge and intent will result in not only a greater number of applicants, but those reflecting the diversity and county-wide representation of the First State. Our aim is to demonstrate not only DIMER medical school admissions opportunities, but continued education beyond: to the Delaware Branch Campus for clinical education, and to Delaware's excellent residency programs for Graduate Medical Education. We intend to harness this energy and output to the betterment of Delaware's healthcare workforce and, therefore, the health of Delaware communities.



# DIMER Student and Alumni Engagement

Pamela Gardner, BS, Program Manager

Delaware Health Sciences Alliance

While DIMER's charge is to ensure access to quality medical education for Delaware residents, DIMER's mission and values extend beyond access. DIMER and its partners are committed to providing a network of support for its students and engage students and alumni throughout the year in a variety of ways.

Through its relationship with the Delaware Health Sciences Alliance (DHSA), DIMER has implemented a robust engagement strategy for students and alumni. The DIMER-DHSA partnership has resulted in several innovations:

- Crafting personal letters for each admitted & current student at the beginning of each academic year;
- Co-hosting receptions with PCOM and SKMC for DIMER students to network with DIMER and institutional leadership;
- Co-hosting a graduation reception with the Delaware Branch Campus for graduating students;
- Conducting participatory panels in every Delaware county with prospective students and families to discuss the many benefits of DIMER.
- In collaboration with DIMER Board member Dr. Lisa Maxwell, conducting focus groups with current Branch Campus students and residents to discuss ways to retain them in Delaware

As a sponsor of the annual meeting of the Delaware Academy of Medicine / Delaware Public Health Association, DHSA provides an opportunity for DIMER students to attend the event as guests of DHSA. The annual meeting provides valuable exposure for DIMER students to DIMER leadership, DHSA/health system leadership, legislators and community anchors. At the 2019 Annual Meeting (chaired by Dr. Omar Khan), DIMER Chair Sherman Townsend was presented with the Lewis B. Flinn President's Award. This award is presented to an individual or organization that has achieved distinction by substantive contributions to the well-being of our community through education, leadership, philanthropy or service. Furthermore, the 2019 Annual Meeting honored Secretary Kara Odom Walker, MD, MPH, MSHS with a special acknowledgement given only one other time in the Academy's existence.

Education and engagement are pieces of a larger puzzle in creating a dynamic healthcare workforce for Delaware. As DIMER's partner, DHSA facilitates a healthcare workforce recruiting event called "Delaware Day." Delaware Day brings all hospitals and health systems in Delaware together to recruit top talent to serve our communities. The inaugural 2019 event was held in Dover. As we look to future Delaware Day events hosted by DHSA in all three counties on a rotating annual schedule, we seek to provide the opportunity to highlight the full state to prospective physicians. The recruiting event is open to all those interested in recruiting for Delaware-based healthcare jobs. DIMER graduating residents and alumni are specifically invited as another expression of support from the First State, DIMER, and DHSA.



Photo credit: PCOM



*PHYSICIAN DIRECTORY*

# DIMER DIRECTORY

The following pages contain a working list\* of DIMER students who have completed their medical education and their degree type (M.D. from SKMC, and D.O. from PCOM), and the year that they matriculated (entered) into medical school. We use matriculation rather than graduation date as not everyone who enters a given medical school graduates from it due to transfers and medical school duration is not 100% consistent for all students. This section of the directory does not include current DIMER medical students. Resident and student directories can be found on pages 46 and 47.

These physicians are, or have, practiced in Delaware, elsewhere in the United States, or globally.

Entries are listed alphabetically by last name, and in order to economize on space, we have used only married last names if we found a maiden name as well.

*\*this is the first time such a list has been researched and collated. Information has come from a variety of sources, and while we have attempted to be both accurate and comprehensive, errors and omissions may have occurred.*

Semaan Abboud, M.D. - 1987	Sarah Bass, M.D. - 2000	David Bozentka, M.D. - 1987
Ari Abel, M.D. - 1997	Amber Batool, D.O. - 2011	Daniel Bregman, M.D. - 1985
Anne Adam, M.D. - 1977	Raman Battish, M.D. - 2004	Ira Brenner, M.D. - 1976
Cheryl Albanese, M.D. - 1975	Casey Bedder, D.O. - 2007	Cora Breuner, M.D. - 1982
Gregory Albert, M.D. - 2006	James Beebe, M.D. - 1976	Kevin Bristowe, M.D. - 1995
Bradley Albertson, M.D. - 2015	Joseph Belgrade, M.D. - 1985	David Brock, M.D. - 1976
Christopher Aleman, M.D. - 1995	Theresa Benecki, M.D. - 1978	Barrington Brown, M.D. - 2000
Evaline Alessandrini, M.D. - 1988	Bruce Benge, M.D. - 1988	Patricia Brown, M.D. - 1999
Christopher Alexander, D.O. - 2009	David Bercaw, M.D. - 1981	Richard Bruehlman, M.D. - 1982
Mohsin Ali, M.D. - 2013	Amanda Berg, M.D. - 2013	Gina Bui, M.D. - 2005
David Aljadir, M.D. - 2007	Paul Berlin, M.D. - 1985	Daniel Burge, M.D. - 1986
Brianne Allerton, D.O. - 2015	Grace Berlin, D.O. - 2014	John Burge, M.D. - 1988
Bryan Ambro, M.D. - 1999	Scott Berta, M.D. - 2002	Jeffrey Burgess, M.D. - 2016
James Andersen, M.D. - 1983	Gary Beste, M.D. - 1980	Stephen Burke, M.D. - 1998
Donald Andersen, M.D. - 1989	Xia Bi, M.D. - 2016	Kelly Burkert, M.D. - 2002
Jonathan Andrews, M.D. - 2012	Laura Biederman, M.D. - 2014	Archana Caballero, M.D. - 2013
Damian Andrisani, M.D. - 1999	Jason Biggs, M.D. - 2006	Cristina Cabrera, M.D. - 2004
Alice Angelo, M.D. - 1974	John Billon, M.D. - 1999	Michael Cairns, M.D. - 1981
Paul Antal, M.D. - 1994	James Blythe, M.D. - 1998	Carmen Campanelli, M.D. - 2001
Ashley Anttila, M.D. - 2011	Alanna Bodenstab, M.D. - 1977	Mario Capparuccini, M.D. - 1980
Kert Anzilotti, M.D. - 1996	Alex Bodenstab, M.D. - 1977	Andrew Carey, M.D. - 1986
Christine Arenson, M.D. - 1990	William Bodenstab, M.D. - 1977	Asher Carey, M.D. - 1978
Bradley Auffarth, M.D. - 1987	Michael Bonk, M.D. - 2012	Thomas Carnevale, M.D. - 1983
Jeremie Axe, M.D. - 2008	Lindsay Bonnett, M.D. - 2014	James Carney, M.D. - 1983
Dierdre Axell-House, M.D. - 2015	Paul Boulos, M.D. - 2000	Jenava Carty, M.D. - 2014
Alfred Bacon, M.D. - 1981	Elizabeth Bowen, M.D. - 1987	Nicholas Casscells, M.D. - 2013
Carl Barbee, M.D. - 1977	Thomas Bowen, M.D. - 2001	Amanda Castro, M.D. - 2012
Malissa Barbosa, D.O. - 2009	Adam Bowman, M.D. - 1998	Haynes Cates, M.D. - 1980
Sarah Barlow, M.D. - 2012	Kevin Bowman, M.D. - 2006	Michael Chai, M.D. - 2015
William Barrish, M.D. - 1996	William Boyd, M.D. - 1998	Venkat Chakkaravarthi, M.D. - 2003
Bruno Basara, M.D. - 1979	Laura Boyd, M.D. - 2013	Faye Chao, M.D. - 2005

# DIMER DIRECTORY

Wen Chao, M.D. - 1990  
Lynn Chao, M.D. - 1991  
William Chasanov, D.O. - 2007  
Jeffrey Chase, M.D. - 1986  
Andrew Chen, M.D. - 2004  
Sonia Cheng, M.D. - 1997  
Deepthi Cherian, M.D. - 2013  
Dinu Cherian, M.D. - 2008  
David Chiang, M.D. - 2008  
Nikhil Chinmaya, D.O. - 2015  
Richard Cho, M.D. - 2003  
Hetal Choxi, M.D. - 2012  
Melissa Choy Beattie, M.D. - 2017  
Stephen Chrzanowski, M.D. - 2002  
Pil Chung, M.D. - 2004  
Mark Clark, M.D. - 1976  
Ryan Cleary, M.D. - 2010  
Joseph Clemente, M.D. - 1985  
David Clinton, M.D. - 1975  
Stephen Clute, M.D. - 1997  
Clyde Clybourn, M.D. - 2002  
David Clymer, M.D. - 1987  
Amy Coan, M.D. - 2013  
Daniel Coar, M.D. - 1986  
Valerie Cohen, D.O. - 2011  
Timothy Cole, M.D. - 1988  
Joseph Colletta, M.D. - 1977  
Roger Componovo, M.D. - 2002  
David Compton, M.D. - 1998  
Kieran Connolly, M.D. - 1996  
Stephen Conrad, M.D. - 1975  
Michael Conway, M.D. - 1989  
Frederick Cook, M.D. - 1984  
James Cook, M.D. - 1984  
Brianna Cook Sustersic, M.D. - 2008  
Jennifer Cooke, D.O. - 2007  
Susan Cooley, M.D. - 1984  
Kevin Copeland, D.O. - 2006  
Jonathan Corsini, M.D. - 2014  
Michael Cosgrove, M.D. - 1999  
Christopher Cox, M.D. - 1998  
Walter Coyle, M.D. - 1986  
Colin Craft, M.D. - 2013  
Jeanne Craft, M.D. - 1989  
Kevin Crotty, D.O. - 2007  
Robert Crowe, M.D. - 1999  
Elizabeth Crowe, M.D. - 2010  
Christopher Crowell, M.D. - 2004  
Kevin Crowley, M.D. - 1974  
Kevin Cullen, D.O. - 2004  
Patricia Curtin, M.D. - 1988  
Elizabeth Cushing, D.O. - 2017  
Anthony DalNogare, M.D. - 1978  
Hung Dam, M.D. - 1999  
Anh Dam, M.D. - 1999  
James D'Amour, M.D. - 1982  
John Danko, D.O. - 2001  
Jeffrey Dassel, M.D. - 2002  
Seema Dattani, M.D. - 2008  
Kimberly Davidson, M.D. - 2001  
John Davies, M.D. - 1991  
Joshua Davis, M.D. - 2017  
Erin Davis, M.D. - 2010  
Bessann Dawson, M.D. - 1986  
Steven Dellose, M.D. - 1996  
Lee Dennis, M.D. - 1981  
Joseph Deutsch, M.D. - 2006  
Chaitan Devulapalli, M.D. - 2011  
Surjeet Dheer, D.O. - 2016  
Matthew Di Guglielmo, M.D. - 2004  
Dennis Dicampoli, M.D. - 1996  
Jacob Diehl, D.O. - 2006  
John Dietz, M.D. - 1977  
Stephen DiSabatino, M.D. - 2015  
Kristin DiSimone-Berna, M.D. - 1996  
James Dobson, M.D. - 1976  
Phillip Dobson, M.D. - 2011  
Michael Doherty, M.D. - 1984  
Jeremy Domanski, M.D. - 2005  
Zeena Dorai, M.D. - 1998  
William Doran, D.O. - 2011  
Denise Dorsey Kyle, M.D. - 1995  
Christopher Doty, M.D. - 1997  
Anthony Dougherty, M.D. - 1974  
Lauren Dougherty Bloom, D.O. - 2013  
Lauren Douglas, M.D. - 2011  
Richard Dowling, M.D. - 1986  
Luis Duarte, M.D. - 1987  
John Duch, M.D. - 1993  
Duane Duke, M.D. - 2003  
Gealina Dun-Melli, M.D. - 2016  
Philip Durney, M.D. - 2017  
Anne Durstenfeld, M.D. - 2013  
Kevin Eanes, M.D. - 2008  
Paul Eckenbrecht, M.D. - 1981  
Guy Edmondson, M.D. - 1981  
David Edwards, M.D. - 1982  
Joshua Eisenberg, M.D. - 1999  
Jesse Eisenman, M.D. - 1984  
Richard Eisenman, M.D. - 1987  
Kathleen Eldridge, M.D. - 2007  
Valerie Elener, M.D. - 1987  
Daniel Elliot, M.D. - 2001  
Amy Elliott, M.D. - 1997  
Scott Ellis, M.D. - 1985  
Frank Ellis, M.D. - 1989  
Donald Emery, M.D. - 1981  
Brian Englander, M.D. - 1998  
Rachel Epstein, M.D. - 2009  
Alan Erickson, M.D. - 1979  
Christopher Eriksen, M.D. - 1982  
Charles Esham, M.D. - 1988  
David Estock, M.D. - 1982  
Mary Facciolo, M.D. - 1979  
Christian Fagel, M.D. - 2016  
Andrew Farach, M.D. - 2010  
Hadi Fattah, M.D. - 2011

# DIMER DIRECTORY

Bahar Fazeli, M.D. - 2007  
Samantha Feld, M.D. - 2012  
John Field, M.D. - 2012  
Justin Field, M.D. - 2015  
Bonni Field, M.D. - 1985  
Michael Fierro, M.D. - 2010  
Barbara Figgs, M.D. - 1974  
Marciana Filippone, M.D. - 1978  
Jon Finamore, M.D. - 2015  
Tina Finesmith, M.D. - 1987  
John Fiss, M.D. - 2001  
Christa Fistler, M.D. - 2001  
Patricia Fitzpatrick, M.D. - 1978  
Timothy Fitzpatrick, M.D. - 2000  
Peter Fleischut, M.D. - 2006  
Erin Fletcher, D.O. - 2005  
Erin Fletcher, D.O. - 2006  
Patrick Fogarty, M.D. - 1996  
Everett Ford, M.D. - 1992  
Amy Forsythe Morgan, M.D. - 1993  
Bruce Foster, M.D. - 1977  
Andrew Foy, M.D. - 2008  
Bryan Franck, M.D. - 2008  
Charles Frasso, D.O. - 2013  
Marilee Frazer, M.D. - 1978  
Kyle Frey, M.D. - 2014  
Hervey Froehlick, M.D. - 1981  
William Funk, M.D. - 1977  
Peter Furness, M.D. - 1990  
Rosa Fuste, M.D. - 1977  
Teresa Gale, M.D. - 2002  
Eric Gallagher, M.D. - 1996  
Kimberly Gallagher, M.D. - 1996  
Alexander Gambogi, M.D. - 2013  
Kaanchan Gangal, M.D. - 2007  
Michelle Gardecki, M.D. - 2008  
David Garth, M.D. - 1995  
James Garvin, M.D. - 1976  
Richard Gasparre, M.D. - 1999  
Charles Gawthrop, M.D. - 2004  
Sarah Gawthrop, M.D. - 2004  
Daniel Gelb, M.D. - 1987  
Benjamin George, M.D. - 2002  
Susan George, M.D. - 2004  
Dana Ger, M.D. - 1997  
Darin Geracimos, M.D. - 2006  
Ryan Geracimos, M.D. - 2003  
Joseph Gerard, M.D. - 1977  
Constance Gerassimakis, M.D. - 1979  
Stephanie Giattino, M.D. - 2013  
Sandra Gibney, M.D. - 1994  
Danielle Giddins, M.D. - 2002  
Peter Gkonos, M.D. - 1978  
John Glenn, M.D. - 1974  
Andrew Glick, M.D. - 1984  
Stefanie Golebiewski-Manchin, M.D. - 2010  
Katy Goodman Crowe, M.D. - 2005  
Jonas Gopez, M.D. - 1996  
Richard Gorman, M.D. - 1989  
Sharon Gould, M.D. - 1988  
Matthew Grady, M.D. - 1999  
Antonio Granda, M.D. - 1974  
Glenn Graybeal, M.D. - 1978  
Michael Graybeal, M.D. - 1979  
Michael Greenage, D.O. - 2007  
Jeffrey Greenwald, M.D. - 1983  
Tyler Grenda, M.D. - 2010  
John Griggs, M.D. - 1975  
Angelo Grillo, M.D. - 1990  
Sharon Griswold, M.D. - 1993  
Jerome Groll, M.D. - 1976  
David Grubbs, M.D. - 1985  
Stephen Grubbs, M.D. - 1979  
Jeffrey Guarino, M.D. - 2009  
Courtney Guerrieri, M.D. - 2007  
Kanika Gupta, M.D. - 2007  
Ratika Gupta, M.D. - 2011  
Sara Guzick, D.O. - 2006  
Hilary Haack, D.O. - 2013  
Constantinos Hadjipanayis, M.D. - 1998  
Timothy Hagemann, M.D. - 1983  
John Hale, M.D. - 1988  
Nathan Hammel, M.D. - 2006  
Scott Hammer, M.D. - 2001  
Joseph Handler, M.D. - 1992  
Patrick Hanley, M.D. - 2010  
Edward Hanna, M.D. - 1978  
Patricia Hansen Figgs, M.D. - 2011  
Ashley Harrison Choucroun, M.D. - 2008  
Elyse Harrop, M.D. - 1995  
Scott Harshman, M.D. - 2012  
Geoffrey Hart, M.D. - 1981  
Sally Hauser, M.D. - 1977  
McKenna Healy, M.D. - 2010  
Lauren Healy-Scarpaci, M.D. - 1996  
Anneliese Heckert, D.O. - 2011  
Jeffrey Heckert, M.D. - 1989  
Richard Heckert, M.D. - 1981  
Ryan Heffelfinger, M.D. - 2000  
Cynthia Heldt, M.D. - 1983  
Stacy Henderson McAllister, M.D. - 2012  
Michael Henrickson, M.D. - 1984  
George Henry, M.D. - 1995  
Wayne Herrick, M.D. - 1981  
Thomas Hetrick, M.D. - 1976  
Gideon Hill, M.D. - 1983  
Raymond Hillyard, M.D. - 1981  
Benjamin Hinman, M.D. - 2014  
Neil Hockstein, M.D. - 2000  
John Hocutt, M.D. - 1975  
Courtney Hoey, M.D. - 2007  
Carolyn Hoffman, M.D. - 1990  
Jean Hoffman-Censits, M.D. - 2002  
Michael Hofmann, M.D. - 1977



# DIMER DIRECTORY

Charles Hoidal, M.D. - 1982  
Anita Holloway, M.D. - 1986  
Angelica Honsberg, M.D. - 1989  
Timothy Hoopes, M.D. - 1988  
Terry Horton, M.D. - 1987  
Paul Hoyer, M.D. - 1976  
Marian Huang, M.D. - 1982  
Philip Huffman, M.D. - 1998  
Carrie Hufnal-Miller, M.D. - 1984  
Samuel Hughes, M.D. - 1975  
Peter Hulick, M.D. - 2001  
Mark Hummel, M.D. - 1985  
Joseph Hung, M.D. - 2007  
Clifton Hunt, M.D. - 1974  
Deborah Hunter, M.D. - 1992  
Christopher Huntington, M.D. - 1990  
Jennifer Hurd, M.D. - 2009  
Douglas Hutchinson, M.D. - 1984  
Sharon Hwang, M.D. - 2013  
Patrice Hyde, M.D. - 1980  
Melodie Icasiano, M.D. - 1999  
Daniel Ikeda, M.D. - 2009  
Galicano Inguito, M.D. - 1990  
Siobhan Irwin, M.D. - 1996  
Kathryn Italia, M.D. - 2005  
Brittany Jackson, M.D. - 2013  
Jeffrey Jacobs, M.D. - 1985  
Neeta Jain Sethi, M.D. - 2013  
Pooja Jasani, D.O. - 2007  
Tyrie Jenkins Hiller, M.D. - 1980  
Brian Jerusik, D.O. - 2009  
David Jezyk, M.D. - 1975  
Margaret Johnson, M.D. - 1990  
David Johnson, M.D. - 1987  
Robert Johnson, M.D. - 1974  
Joan Johnson, M.D. - 1983  
Steven Johnson, M.D. - 1975  
Caitlyn Johnson Costanzo, M.D. - 2011  
Upasana Joneja, M.D. - 2013  
David Jones, M.D. - 1998  
James Jones, M.D. - 1975  
Trisha Jordan, M.D. - 2001  
Nathan Jordan, M.D. - 2013  
Trisha Juliano, M.D. - 2010  
Jennifer Kacmar, M.D. - 1996  
Nicholas Kalman, D.O. - 2015  
Ram Kalyanam, M.D. - 1993  
Samata Kamireddy, M.D. - 2012  
Jonathan Kaufmann, D.O. - 2006  
Erin Kavanaugh, M.D. - 2007  
Jonathan Kay, M.D. - 1975  
Peter Kelleher, M.D. - 2002  
Tara Kennedy, M.D. - 2004  
Anne Marie Kennedy, D.O. - 2016  
Minh Kenney, M.D. - 1993  
James Kerrigan, M.D. - 1984  
Christopher Kestner, M.D. - 2006  
Brian Keuski, M.D. - 2007  
Vikram Khasat, D.O. - 2010  
Mary Khine, M.D. - 1992  
Elaine Kilmartin, M.D. - 2001  
Gina Kim, M.D. - 2013  
Edward Kim, M.D. - 1989  
Su Kim, M.D. - 2010  
Deborah Kirk, M.D. - 2000  
Chris Kittle, M.D. - 1978  
Peter Klacsmann, M.D. - 1975  
Maryida Klimowicz, M.D. - 1984  
James Knox, M.D. - 1986  
Jane Kong, M.D. - 2003  
Craig Koniver, M.D. - 2000  
Mark Kostic, M.D. - 1994  
Jennifer Koterwas, M.D. - 2010  
Renee Kottenhahn, M.D. - 1990  
Heidi Kozic, M.D. - 2002  
Charles Krespan, M.D. - 1982  
Andrew Kubinski, D.O. - 2014  
Michael Kuczmariski, D.O. - 2005  
Gregory Kujala, M.D. - 1981  
Braden Kuo, M.D. - 1994  
Maryanne Kuo, M.D. - 2007  
Kristen Kuratnick Sandoe, D.O. - 2007  
Erika Kutsch, D.O. - 2006  
Dean Laganosky, M.D. - 2014  
Gail Larkin, M.D. - 1982  
M. Lauter, M.D. - 1978  
Otto Lauter, M.D. - 1982  
David Lavin, M.D. - 1978  
Laura Lawler, M.D. - 2001  
Marvin Lawrence, M.D. - 1996  
Jessica Lawrence George, M.D. - 2004  
Stephen Lazar, D.O. - 2014  
Peter Lazzopina, M.D. - 2008  
Sook Lee, M.D. - 1996  
Vanessa Lee, M.D. - 2003  
Stephanie Lee, M.D. - 1999  
Brian Lee, M.D. - 2012  
Christina Lehane, M.D. - 2003  
Miriam Lender, M.D. - 2008  
Nicholas Leone, M.D. - 2003  
Nancyanne Lerner, M.D. - 1991  
Michael Levy, M.D. - 1976  
Eleanor Lewin, M.D. - 2013  
Benjamin Liechty, M.D. - 2010  
Julie Linek Barta, M.D. - 2008  
Matthew Lippstone, M.D. - 2002  
George Lisehora, M.D. - 1984  
Susan Livesay, M.D. - 1989  
Elizabeth Livingston, M.D. - 1989  
Joshua Lloyd, M.D. - 2004  
Julia Loiacono Cullen, D.O. - 2012  
Thomas Londergan, M.D. - 1988  
Michael Longo, M.D. - 1997  
William Lovett, M.D. - 1980

# DIMER DIRECTORY

Jonathan Lowry, M.D. - 1989  
Hungyi Lub, M.D. - 2002  
Jeffrey Lukish, M.D. - 1991  
Christo Lutrzykowski, M.D. - 1993  
Melissa Lynch, M.D. - 2001  
Lawrence Lyons, M.D. - 1976  
Albert MacFarlane, M.D. - 1982  
Jill Mackey, M.D. - 1994  
John MacKnight, M.D. - 1992  
John Macmillan, M.D. - 1995  
Leslie Magalong, M.D. - 1993  
Ali Mahmood, M.D. - 2013  
Reza Maleksalehi, M.D. - 1991  
G. Malone, M.D. - 1976  
Stephen Malone, M.D. - 1995  
Michael Maloney, M.D. - 2014  
Patrick Maloney, M.D. - 2007  
Lindsay Mammarella, M.D. - 2015  
Maria Mancuso, M.D. - 1999  
Charles Mandelberg, M.D. - 1982  
Mark Mandichak, M.D. - 2007  
Richard Marcello, M.D. - 1975  
Walter Marchlewski, M.D. - 1980  
Armin Marefat, D.O. - 2005  
Megan Margiotta, M.D. - 2014  
Andrew Margules, M.D. - 2012  
Andrew Markiewitz, M.D. - 1989  
John Maroney, M.D. - 1986  
Christopher Martin, M.D. - 2009  
Patrick Massey, M.D. - 2008  
Patrick Matthews, M.D. - 2003  
Sarah Matthews Wells, M.D. - 2016  
Thomas Maxwell, M.D. - 1975  
Henry Maxwell, M.D. - 1980  
Thane McCann, M.D. - 2003  
Christopher McClung, M.D. - 2003  
Edward McConnell, M.D. - 1976  
Paul McCready, M.D. - 1980  
Jamie McElrath, M.D. - 1994  
Brian McGillen, M.D. - 2004  
Holly McKiel, D.O. - 2011  
Brian McKinley, M.D. - 1993  
Elizabeth McShane, M.D. - 1983  
Ryan McSpadden, M.D. - 2012  
Aaron Mendelson, M.D. - 2012  
Armando Mendez, M.D. - 1985  
Martin Mersky, M.D. - 1975  
Joseph Mesa, M.D. - 1994  
Laura Methvin, M.D. - 2015  
Erich Metzler, M.D. - 1988  
William Meyer, M.D. - 1974  
Eric Michael, M.D. - 1978  
Liudmila Mikhno, D.O. - 2018  
Julia Milewski Azari, M.D. - 1985  
Wayne Miller, M.D. - 1983  
Randolph Miller, M.D. - 1984  
Samuel Miller, M.D. - 1991  
Pamela Miller, M.D. - 1988  
Erin Millilgan-Milburn, M.D. - 2008  
Edmund Mitchell, M.D. - 1990  
Perry Mitchell, M.D. - 1974  
Bradford Mitchell, M.D. - 1987  
Obinna Mmagu, D.O. - 2013  
Wallis Molchen, D.O. - 2012  
Jeremy Molligan, M.D. - 2012  
James Monihan, M.D. - 1984  
Benjamin Montgomery, M.D. - 2000  
Paul Montigney, M.D. - 1978  
David Moore, M.D. - 1982  
Edward Moore, D.O. - 2013  
Sarah Moore, M.D. - 2007  
Daniel Moore, M.D. - 1990  
Leslie Moroz, M.D. - 2009  
Allston Morris, M.D. - 1976  
Heather Mosca, D.O. - 2010  
Neil Moudgill, M.D. - 2004  
Parisa Mousavi Garrett, M.D. - 2003  
Craig Muetterties, M.D. - 1975  
Adam Mullan, M.D. - 2012  
Donald Mullen, M.D. - 1993  
Lise Mungul, M.D. - 1979  
Margaret Murphy, M.D. - 1980  
Gene Myers, M.D. - 2004  
Steven Myrick, M.D. - 1981  
Tejal Naik, M.D. - 2016  
Nadia Nashed, D.O. - 2011  
Priyanka Nath, M.D. - 2004  
Guillermo Navarro, M.D. - 2000  
Kimberlie Neal, M.D. - 1996  
Krista Neal Wasserman, M.D. - 2015  
Jean Nelson, M.D. - 1988  
Anne Nelson Walton, M.D. - 2000  
Sharon Nemser-Rudo, M.D. - 2000  
Janice Nevin, M.D. - 1987  
Ngoc Nguyen, M.D. - 2015  
Michael Nguyen, M.D. - 2000  
Aivi Nguyen, M.D. - 2014  
Andrew Noble, M.D. - 2000  
Sajid Noor, D.O. - 2007  
Leonard Noronha, M.D. - 2000  
Jillian Noyes, M.D. - 2013  
Brent Noyes, M.D. - 1978  
Robert Nunag, M.D. - 1992  
Aaron Ober, M.D. - 2013  
Jeffrey O'Brian, M.D. - 2006  
Matthew O'brien, M.D. - 1997  
John O'Brien, M.D. - 1979  
Allison Ochsner, M.D. - 1992  
Robert O'Connor, M.D. - 1986  
Julie O'connor, M.D. - 2003  
Kathryn O'Connor, M.D. - 1986  
Kara Odom Walker, M.D. - 2004  
Michael O'Donoghue, M.D. - 1992  
Stephen Ogden, D.O. - 2005

# DIMER DIRECTORY

Ann Olewnik, M.D. - 1983  
Robert Olivere, M.D. - 1977  
David Olson, M.D. - 1976  
Robert Olympia, M.D. - 1996  
Patricia Olympia DeChellis, M.D. - 2001  
Chiazom Omeruah, D.O. - 2008  
Jubril Onaneye, D.O. - 2015  
Kevin O'Neil, M.D. - 1983  
Daniel O'Neill, M.D. - 1989  
Eric Orndorff, M.D. - 1999  
Timothy Ortlip, M.D. - 2012  
David Osborn, M.D. - 2001  
Ernest Osei-Tutu, M.D. - 1984  
Gary Owens, M.D. - 1975  
Jeffrey Owens, M.D. - 1996  
Juan Palacio, M.D. - 1996  
Francis Palermo, M.D. - 1984  
Craig Palmer, M.D. - 1983  
Vasudha Panday, M.D. - 2001  
Ashley Panichelli, M.D. - 2015  
Matthew Paoli, D.O. - 2012  
Anuj Parikh, M.D. - 2002  
Amol Parikh, D.O. - 2008  
Monica Patel, M.D. - 2003  
Kajal Patel, D.O. - 2013  
Monil Patel, D.O. - 2013  
Parth Patel, D.O. - 2016  
Shaunak Patel, M.D. - 1998  
Sayjal Patel, M.D. - 1997  
Ravi Patel, M.D. - 2007  
Dhiren Patel, M.D. - 2003  
Shivam Patel, M.D. - 2007  
Markian Pazuniak, M.D. - 2015  
Jay Peacock, M.D. - 1977  
Adrian Pearson, D.O. - 2014  
Steven Pearson, M.D. - 1982  
Stephen Peeke, M.D. - 2013  
Nicholas Pefkaros, M.D. - 2001  
Jennifer Pelli Packard, M.D. - 2006  
Susan Peluso, M.D. - 1995  
Thomas Pembroke, M.D. - 2009  
Joseph Pennington, M.D. - 1991  
Nicholas Perchiniak, M.D. - 2007  
Neeraja Peri, M.D. - 2014  
Nityanand Peri, D.O. - 2016  
Luke Perkins, D.O. - 2016  
Sarah Perry Ambro, M.D. - 2005  
Michael Peters, M.D. - 1998  
William Pfaff, M.D. - 2003  
Khanh Pham, M.D. - 2000  
Christine Phillips, M.D. - 1998  
Alireza Pirestani, D.O. - 2009  
Michael Podolsky, M.D. - 1974  
Nicholas Polise, D.O. - 2016  
Julie Poludniak, M.D. - 1996  
Theresa Pondok, M.D. - 2001  
Alissa Poppiti Manfredi, M.D. - 1999  
Robert Portz, M.D. - 1987  
John Powell, M.D. - 2002  
Deepak Pradhan, M.D. - 2006  
Donna Price, M.D. - 1983  
Harper Price, M.D. - 2004  
Arthur Prine, M.D. - 1995  
Brian Pryor, D.O. - 2009  
John Punderson, M.D. - 1976  
Ayis Pyrros, M.D. - 2003  
Glen Quigley, M.D. - 2010  
Seong Ra, M.D. - 2004  
Ryan Rafaelli, M.D. - 2002  
Irene Raisis, M.D. - 1983  
David Rappaport, M.D. - 2001  
Aaron Ratner, D.O. - 2011  
Edward Read, M.D. - 1977  
Emily Reardon, M.D. - 2011  
Rajesh Reddy, D.O. - 2004  
Elizabeth Reed Burchard, M.D. - 2003  
Glenys Rees, M.D. - 1983  
Zachary Reese, M.D. - 2016  
Clare Reinhardt, M.D. - 2000  
Neil Remington, M.D. - 1979  
Stacia Remsberg-Sailer, M.D. - 1988  
Mark Repka, M.D. - 1981  
Michael Repka, M.D. - 1979  
Stephen Replenski, D.O. - 2009  
Daniel Rhoades, M.D. - 2014  
Matthew Richards, M.D. - 2013  
Christopher Richards, M.D. - 2013  
Shane Riggs, D.O. - 2014  
James Ritter, M.D. - 1983  
Lana Rivers, M.D. - 2012  
Richard Rizzo, M.D. - 1989  
Carol Robertson, M.D. - 1985  
Frank Robertson, M.D. - 1985  
Aaron Robinson, D.O. - 2004  
Amy Robinson, M.D. - 2000  
Mark Rodgers, M.D. - 1992  
Maria Rodowski, M.D. - 1996  
Vincent Rollo, M.D. - 1989  
Russell Rosenberg, M.D. - 2014  
Terence Ross, M.D. - 1981  
D. Ross, M.D. - 1980  
Kathlyn Rowen, M.D. - 1986  
Matthew Rubino, M.D. - 2007  
Ned Rudnitzky, M.D. - 1998  
Kimberly Ruhl, M.D. - 1994  
Jeffrey Ruiz, D.O. - 2006  
John Ruth, M.D. - 1984  
Ronald Ryan, M.D. - 1995  
Steven Rybicki, M.D. - 2012  
Raja Sabbagh, M.D. - 1992  
Arvind Sabesan, M.D. - 2011  
Radha Sadacharan, M.D. - 2014  
Katherine Sahm, M.D. - 2000  
Rujuta Saksena, M.D. - 2008

# DIMER DIRECTORY

Kent Sallee, M.D. - 1976  
Duncan Salmon, M.D. - 1978  
Nicole Salva, M.D. - 2008  
Sarah Sammons, M.D. - 2012  
Britt Sanford, M.D. - 1994  
Joseph Santora, D.O. - 2012  
Keith Sargent, D.O. - 2004  
Jonathan Sarik, M.D. - 2011  
Anna Sasaki, M.D. - 1974  
Sotiere Savopoulos, M.D. - 1989  
Patricia Schaefer, M.D. - 1977  
Madalyn Schaeffgen, M.D. - 1982  
Roxie Schell, M.D. - 1978  
William Schetman, M.D. - 1986  
Andrea Schmiege, M.D. - 1998  
Laura Schoch Farach, M.D. - 2010  
Scott Schoedler, M.D. - 1990  
Jason Schoenfeld, M.D. - 2013  
Alexandra Schuck Jordan, M.D. - 2011  
Mary Schuler, M.D. - 1995  
David Schutzman, M.D. - 1978  
Paul Schwartzkopf, M.D. - 1987  
Robert Schweizer, M.D. - 1979  
Kevin Scott, M.D. - 2000  
Daniel Scott, M.D. - 1982  
Geoffrey Scott, D.O. - 2015  
Elaine Seaton, M.D. - 2009  
Sepehr Sedigh-Haghighat, M.D. - 2016  
Allen Seeger, M.D. - 1982  
Suneil Seetharam, M.D. - 2017  
Alan Seltzer, M.D. - 1984  
Keith Senecal, M.D. - 1979  
James Shaer, M.D. - 1993  
Leon Shao, M.D. - 2007  
Jameel Shareef, D.O. - 2016  
Madhuri Sharma, M.D. - 2011  
Eileen Sheehy Milano, M.D. - 1987  
Craig Shepps, M.D. - 1994  
Richard Shih, M.D. - 1988  
Braden Shoupe, M.D. - 1983  
Winston Shu, M.D. - 2003  
Carolyn Sidor, M.D. - 1982  
Michael Siegell, M.D. - 1997  
John Siegle, M.D. - 1981  
Benjamin Siemanowski, M.D. - 2000  
Allan Simpao, M.D. - 2007  
Matthew Sincok, M.D. - 2005  
Thomas Sisk, M.D. - 2002  
Cindy Siu, M.D. - 2015  
Leslie Sklar Galloway, M.D. - 1990  
Lindsey Slater, M.D. - 1987  
Timothy Slavens, M.D. - 1988  
Joseph Sliwkowski, M.D. - 1988  
Stewart Slomowitz, M.D. - 1992  
Mackenzie Smith, M.D. - 2003  
Ryan Smith, M.D. - 2015  
Jennifer Snavely, D.O. - 2006  
Sae Sohn, M.D. - 1988  
Bruce Sokoloff, M.D. - 1986  
Anjali Solanki, D.O. - 2010  
Rahul Solanki, M.D. - 2003  
Anna Soltys Widmyer, M.D. - 2009  
Frederick Song, M.D. - 2003  
Mark Sordi, M.D. - 1998  
Alexis Souleles, D.O. - 2004  
Harold Spangler, M.D. - 1993  
Christopher Spanich, M.D. - 1989  
Manasa Sridhar, D.O. - 2016  
Sharon Stachecki-Consolato, M.D. - 1992  
Richard Starke, M.D. - 1987  
Benjamin Starnes, M.D. - 1992  
John Statler, M.D. - 1994  
Jillian Stevens Savage, D.O. - 2008  
Geoffrey Stewart, M.D. - 1990  
Michael Stillabower, M.D. - 1976  
Joseph Stirparo, M.D. - 2005  
Robert Stock, M.D. - 1988  
Joyce Stout, M.D. - 1996  
Joseph Straight, M.D. - 2003  
Alexandra Straight, M.D. - 2001  
Abigail Strang, M.D. - 2011  
Margaret Stroz, M.D. - 1984  
Keerthi Surampudy, D.O. - 2017  
Matthew Swierzbinski, M.D. - 2008  
Collin Sylvester, M.D. - 2014  
Zsofia Szep, M.D. - 2002  
Wasył Szeremeta, M.D. - 1989  
Chad Talarek, M.D. - 2008  
Thomas Tandy, M.D. - 1986  
Bambi Taylor, M.D. - 1994  
Nicholas Tepe, M.D. - 1980  
Amit Thaker, D.O. - 2004  
Liana Theroux, M.D. - 2014  
Karin Thomas, M.D. - 1996  
Kenneth Thompson, M.D. - 1975  
Richard Tobin, M.D. - 1984  
Gregory Tokarsky, M.D. - 2003  
Daniel Tolpin, M.D. - 2004  
Bethany Tozer, M.D. - 2008  
William Trachtman, M.D. - 1989  
Mark Trochimowicz, M.D. - 2001  
Michael Trotter, M.D. - 2008  
David Tuke, M.D. - 2014  
Puneet Tung, D.O. - 2010  
Navjot Tung Jain, D.O. - 2013  
Linda Turner, D.O. - 2006  
Bruce Turner, M.D. - 1975  
Kevin Turner, M.D. - 2010  
Brian Uniacke, M.D. - 1982  
Kenneth Usuki, M.D. - 2004  
Neil Vadhar, M.D. - 2015  
Anika Vaidyanathan, M.D. - 2016  
Babak Vakili, M.D. - 1997  
Sander Van cleeff, M.D. - 1990

# DIMER DIRECTORY

Gabriella Vasile, D.O. - 2017  
Nestor Veitia, M.D. - 1998  
Maria Vershovovsky, M.D. - 2014  
Gonzalo Vicente, M.D. - 1998  
Gregory Viehman, M.D. - 1993  
Swathi Vijayaraghavan, M.D. - 2008  
Paul Villasenor, M.D. - 1999  
Richard Vincent, M.D. - 2012  
Michael Vincent, M.D. - 1979  
Joanne Viola, M.D. - 1996  
Denise Visco, M.D. - 1991  
Matthew Voltz, D.O. - 2009  
John Wagner, M.D. - 1981  
Eric Walker, M.D. - 1995  
Jason Walls, M.D. - 2008  
Eugenia Walsh, M.D. - 1989  
Brian Walsh, D.O. - 2010  
Heather Walters Nace, M.D. - 2005  
Hojin Wang, M.D. - 2001  
Chi-lun Wang, M.D. - 1978  
Christine Wanjeri-Hasan, D.O. - 2011  
Charles Waples, M.D. - 1976  
Meredith Warner, M.D. - 1999  
Erin Watson, M.D. - 2005  
Christina Wee, M.D. - 1994  
Barry Wein, M.D. - 1985  
David Weinman, M.D. - 1986  
Tamara Welch, M.D. - 2004  
Johannes Weltin, M.D. - 1976  
Christopher Wendel, M.D. - 1978  
Jordan Wescott Watson, M.D. - 2014  
Caroline Weston Ropiak, M.D. - 2004  
Mitchell Whiteman, M.D. - 1983  
Kevin Whitlock, D.O. - 2014  
Charles Whitney, M.D. - 1990  
Scott Wiesen, M.D. - 1986  
Richard Wilk, M.D. - 1985  
Cy Wilkins, M.D. - 2011  
Elizabeth Williams, D.O. - 2014  
Edward Williams, M.D. - 1975  
Timothy Williams, M.D. - 2004  
Jane Williams Moore, M.D. - 1997  
Dean Winslow, M.D. - 1976  
Robert Wisniewski, M.D. - 1977  
Peter Witherell, M.D. - 1991  
John Witherell, M.D. - 1994  
Colleen Witherell, M.D. - 1994  
Alison Witkin, M.D. - 2010  
Robert Witt, M.D. - 1981  
Richard Wittmeyer, D.O. - 2014  
Kevin Wolf, D.O. - 2013  
Christopher Wolf, M.D. - 2005  
Kelly Wright, M.D. - 2009  
Clinton Wrigley, M.D. - 2008  
Michael Yaakovian, M.D. - 2004  
Akshay Yadhati, M.D. - 2013  
Anusha Yeshokumar, M.D. - 2011  
Mona Yezdani, M.D. - 2010  
John Yindra, M.D. - 1979  
Richard Yoon, M.D. - 2006  
Robert Young, M.D. - 2001  
Dennis Young, M.D. - 1974  
Jeanette Zaines, M.D. - 1991  
Elizabeth Zapp, M.D. - 1997  
Michael Zaragoza, M.D. - 1987  
Christopher Zarraga, D.O. - 2015  
Katherine Zarroli, M.D. - 2013  
Bethany Ziss, M.D. - 2007  
Mark Zolnick, M.D. - 1982  
Paul Zukoff, M.D. - 1986  
Thomas Zumsteg, M.D. - 1983

## DIMER Residents\*

Hannah Anderson, M.D.  
Jacob Anderson, M.D.  
Gulsedef Arslan, D.O.  
Haseeb Bajwa, D.O.  
Kaitlyn Barkley Melnick, M.D.  
Judith Barnett, D.O.  
David Barry, M.D.  
Isaac Bennett, D.O.  
Hamza Bhatti, D.O.  
Talha Bhatti, D.O.  
Brian Blazovic, M.D.  
Brandon Boyer, D.O.  
Charles Brodowski, M.D.  
Rachel Brown, D.O.  
Mark Burgess, D.O.  
Brian Calio, M.D.  
Alexander Chau, M.D.  
Xian Cheung, D.O.  
Evan Cohen, D.O.  
Ryan Cotto, M.D.  
Alicia Cox, D.O.  
Stephanie Cramer, M.D.  
Marcus Dal Nogore, M.D.  
Christine Dang, M.D.  
Adam Daniel, M.D.  
Angela Debo, D.O.  
Courtney Docherty, D.O.  
Jeremy Dressler, M.D.  
Julia Durante, M.D.  
Alexis Esbitt, D.O.  
Maura Fahy, M.D.  
Meghan Fahy, M.D.  
Michele Fascelli, M.D.  
Nicole Frerichs, D.O.  
Lauren Galinat, M.D.  
Julie Gianakon, M.D.  
Gerald Gibbons, M.D.  
Amanda Grigoli, M.D.  
Rica Gueco, M.D.  
John Hafycz, M.D.  
Katrina Hansen, D.O.  
Joshua Harman, D.O.  
Heather Hartman, M.D.  
Erica Hatch, M.D.  
Brittany Heckel, M.D.  
Clifford Hegedus, M.D.  
Meghan Holliday-Minderlein, D.O.  
Madison Houff, D.O.  
Chad Hummel, M.D.  
Travis Hunt, M.D.  
Gabrielle James, M.D.  
Shreya Jammula, M.D.  
Maciej Klosowski, M.D.

Pavitra Krishnamani, M.D.  
Elizabeth Kuhn, M.D.  
Patrick Kukulich, M.D.  
Sanjay Kulkarni, M.D.  
Christine Kurian, M.D.  
Abigail Kushner, D.O.  
Jared Lander, D.O.  
Kristine LaRocca, D.O.  
Arooj Latif, D.O.  
Philip Lavenburg, D.O.  
Victoria Lawn, D.O.  
Brian Lee, M.D.  
Ryan Lee, M.D.  
Harry Lengel, M.D.  
Thomas LeNoir, D.O.  
Bryan Lerner, M.D.  
Philip Lieberman, M.D.  
Zachary Magner, D.O.  
Padmini Manrai, M.D.  
Philip Margiotta, M.D.  
Ashley Martin, D.O.  
David Matera, D.O.  
Kyle McCormick, D.O.  
Lindsay McHale, M.D.  
James McNinch, M.D.  
Isha Mehta, D.O.  
Beth Meloro, D.O.  
Nina Millman, M.D.  
Philip Mintz, M.D.  
Christopher Mitchell, M.D.  
Jaymin Modi, D.O.  
Nidhi Mody, D.O.  
Priyanca Mody, D.O.  
Fazad Mohamed, D.O.  
Angelica Montes, M.D.  
Todd Morrison, M.D.  
Samuel Needles, M.D.  
Amanda Nemezc, M.D.  
Jeffrey Oliver, M.D.  
Susan Pak, M.D.  
Arjun Patel, M.D.  
Ramkrishna Patel, M.D.  
Needhi Pattani, D.O.  
Nithin Paul, M.D.  
Lauren Payne, D.O.  
Gregory Penny, M.D.  
Gabrielle Perrotti, M.D.  
Taylor Phillips, D.O.  
Torey Roesch, M.D.  
Nathaniel Rosal, D.O.  
Rebecca Russell, M.D.  
Susan Schiff, M.D.  
Samir Sethi, M.D.

Karim Shafi, M.D.  
Nadia Shobnam, M.D.  
Maryanne Shorey, M.D.  
Jesse Sinanan, M.D.  
Shilpa Singh, D.O.  
Andrew Singles, D.O.  
Hope Skibicki, D.O.  
Lisa Strouss Wallace, M.D.  
Stephy Thomas, M.D.  
David Truscello, D.O.  
Peter Ucciferro, D.O.  
Siddardth Umapathy, D.O.  
Sagar Vadhar, D.O.  
Meredith Vieira, M.D.  
Matthew Viercek, M.D.  
Kevin Walpole, D.O.  
Amanda Walsh, M.D.  
Julie Wang, D.O.  
Alissa Werzen, M.D.  
Christopher West, M.D.  
Matthew Wiltshire, M.D.  
Hunter Witmer, M.D.  
Cullen Worsh, M.D.  
Yuchen Yang, D.O.  
Victor Ye, M.D.  
Andrew Young, D.O.  
Joseph Zarraga, D.O.  
Benjamin Zussman, M.D.

\*As of January 2020. This list is all-inclusive and contains names of inactive, lapsed and deceased individuals.

## Current DIMER Students

### Sidney Kimmel Medical College

T. Robert Abishek	Samantha Leite
Trevor Aldred	Sara Long
Brigitte Anderson	Lauren Lynch
Elyse Andrews	Priya Mahesh
Richard Bai	Thomas Marconi
Earl Bampo	Praneeja Matta
Joshua Barton	Anna Melnick
Jessica Beadle	Toru Mihama
Camryn Bernheimer	Kayla Morrell
Andrew Blake	Jeffrey Mu
Mary Blumenfeld	Oriana Pando
Emily Bollinger	Taylor Paskey
Krystina Callahan	Stephanie Perez
Melissa Chai	Kyle Plusch
Keshav Choudhuri	Natasha Qureshi
Noah Christian	Nicholas Rapp
Daniel Courtney	Chelsea Richards
Bryn Cross	Austin Roadarmel
Devon Cross	Emily Romano
Sean Daniels	Erin Royal
Darren D'mello	Harold Salmons
Grayton Downing	Nazanin Sarpoulaki
Frank Duan	Matthew Sikina
Daniel Eddins	Shelby Smith
Umma Fatema	Kathryn Sommers
Megan Feick	Michelle Stickler
Grace Firestone	Christina Stiebris
Ashley Foreman	Jay Subramoney
Henry Gemino	Abhishek Surampudy
Grant Gillan	Rashiqah Syed
Alyssa Givens	Lauren Szeto
Sarah Halbert	Julian Tanjuakio
Georgette Hattier	Olivia Taylor
Kurt Hill	Ana Tegtmeier
Zachary Howell	Shiori Tomatsu
Zubin Hussain	Dunia Tonob
Galicano Kai Inguito	Jasmine Wang
Kathleen Jarrell	Kerith Wang
Nicholas Jennelly	Brian Wogu
Adrienne Johnson	Ashley Wong
Clinton Jordan	Alexander Xu
Varsha Kripalu	Dani Yellanki
Michelle Leach	Peter Zdunek

### Philadelphia College of Osteopathic Medicine

Yara Aboubakr Abdelaal	Ethan Kirk
Chelsea Adebisi	Pierce Knox
Megan Aidoo	Florina Kraitner
Farha Ali	Nicole Kushner
Alyssa Alicea	Alexa Lapointe
Robert Anderson	Caroline Lawless
Ariella Anthony	Hanxiong Lin
Omneya Ayoub	Austin Lonski
Bradley Bakst	Saleena Malik
Ayla Bengel	Trevor Maloney
Samantha Bush	Navneet Mann
Alisa Chanchenchop	Anson Marsh
Peter Cloney	Vamsi Matta
Whitney Cochran	Frank Mayer
Sarah Coughlan	Kelsey Mellow
Michelle Cross	Arianna Morton
Andre Cunningham	Benjamin Murray
Thomas DePietro	Nicholas O'Connor
Saurabh Dharmadhikari	Lauren Olivieri
Vincent Fierro	Corey Olsen
Adrienne Fraczkowski	Nirali Patel
Andrew Freeman	Sky Prestowitz
Kathryn Fulda	Nandini Razdan
Olivia Garcia	Vandhana Reddy
Michael Gerges	Taylor Russell
Christine Gibson	Shreya Sakthivel
John Gilligan	Austin Schatzman
Lindsay Gugerty	Gelan Shamloul
Devika Gupta	Danica Smith
Hannah Harrell	Kenneth Staab
Jamie Hedrick	Melissa States
Jarrett James	Michael Suarez
Karanveer Johal	Devin Sullivan
Ryan Johnson	Vishwant Tatagari
Nathan Jones	Robert Taylor
Kyle Joseph	Nathalie Torres
Solomon Kamau	Jacob Valvis
Harshita Kandarpa	Blen Weldekidan
Kristen Kerr	Kathie Wu

## Acknowledgments and Thanks

A report such as this, looking back over 50 years, is a significant undertaking. This is especially true where information about former DIMER participants is concerned. The DIMER Board wishes to thank the Delaware Health Sciences Alliance and the Delaware Academy of Medicine / Delaware Public Health Association for their leadership and partnership in developing this report based, in part, on a separate study they independently undertook. In particular, Dr. Omar Khan, Mr. Timothy Gibbs, Dr. Kate Smith, and Ms. Pamela Gardner were instrumental in this work and we are deeply grateful. The DIMER Board acknowledges the pain-staking work undertaken by Thomas R. Ferry and Matthew R. McNeill, BS to compile the information provided in this report.



**DIMER**



**Delaware Institute of Medical Education and Research**  
Copyright © 2020 Delaware Health Care Commission