

CANCER INCIDENCE AND MORTALITY IN DELAWARE, 2013-2017

Diane Ng, MPH, Research Analyst
Sumitha Nagarajan, MPH, Chronic Disease Epidemiologist
Delaware Cancer Registry, Division of Public Health
October 11, 2021



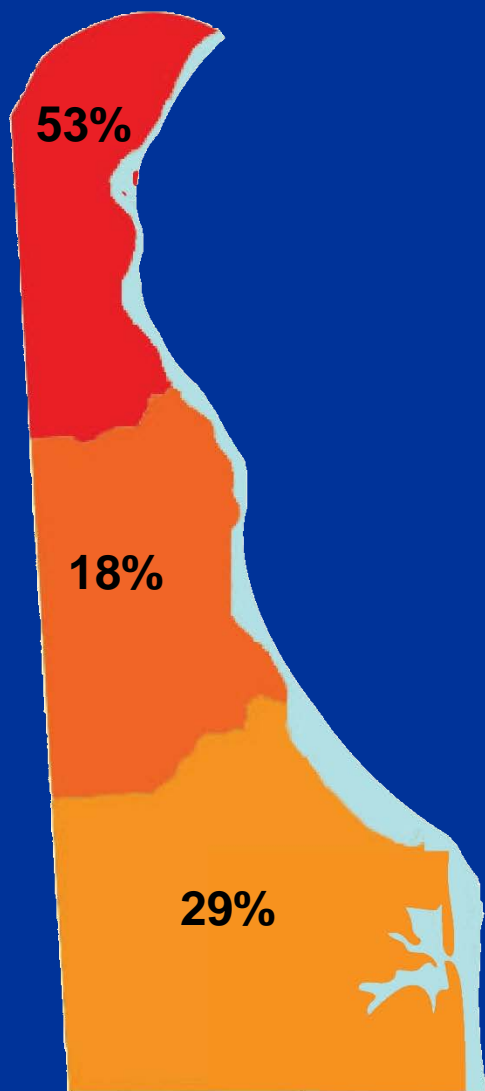
DELAWARE HEALTH AND SOCIAL SERVICES
Division of Public Health
Comprehensive Cancer Control Program

Overview

- All-site cancer rates
- Eight site-specific cancers
- Top four cancer sites: female breast, prostate, lung, and colorectal
- Plus: cervical, kidney and renal pelvis, leukemia, and oral cavity and pharynx cancers.
- Special section on breast cancer and Delaware initiatives
- Census tract-level analysis compendium
 - Census-tract data previously included in the I&M report were moved to a separate compendium
 - Includes all-site cancer incidence rates and maps

ALL-SITE CANCER INCIDENCE

All-site Cancer Incidence, Delaware, 2013-2017



Copyright © U.S. Census Bureau, 2010 Census

- 28,938 cancer cases
 - average of 5,788 per year
- By sex
 - Male – 51%
 - Female – 49%
- By race/ethnicity
 - Non-Hispanic Caucasian – 78%
 - Non-Hispanic African American – 17%
 - Hispanic – 3%

All-Site Cancer Incidence, Delaware vs. U.S., 2013-2017

Delaware: 484.3 per 100,000

Statistically significantly higher than U.S. (435.0 per 100,000)

- *Unchanged* - 2013-2017 rank: 2nd; 2012-2016 rank: 2nd

Delaware males: 531.5 per 100,000

Statistically significantly higher than male U.S. (472.9 per 100,000)

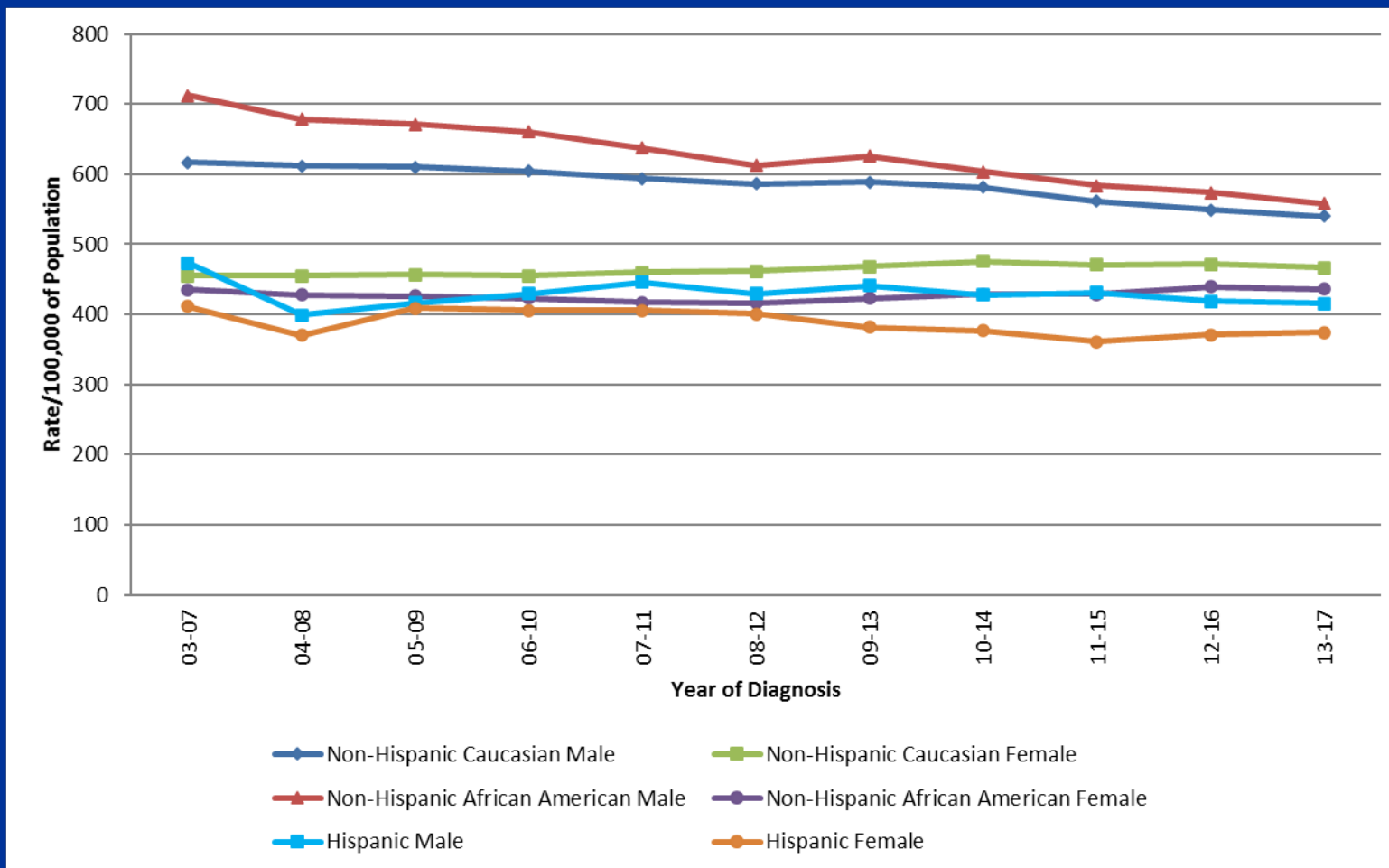
- *Improved* - 2013-2017 rank: 4th; 2012-2016 rank: 3rd

Delaware females: 450.8 per 100,000

Statistically significantly higher than U.S. (410.5 per 100,000)

- *Improved* - 2013-2017 rank: 9th; 2012-2016 rank: 5th

Five-Year Average Age-Adjusted All-Site Cancer Incidence Rates by Sex and Race/Ethnicity; Delaware, 2003-2007 to 2013-2017

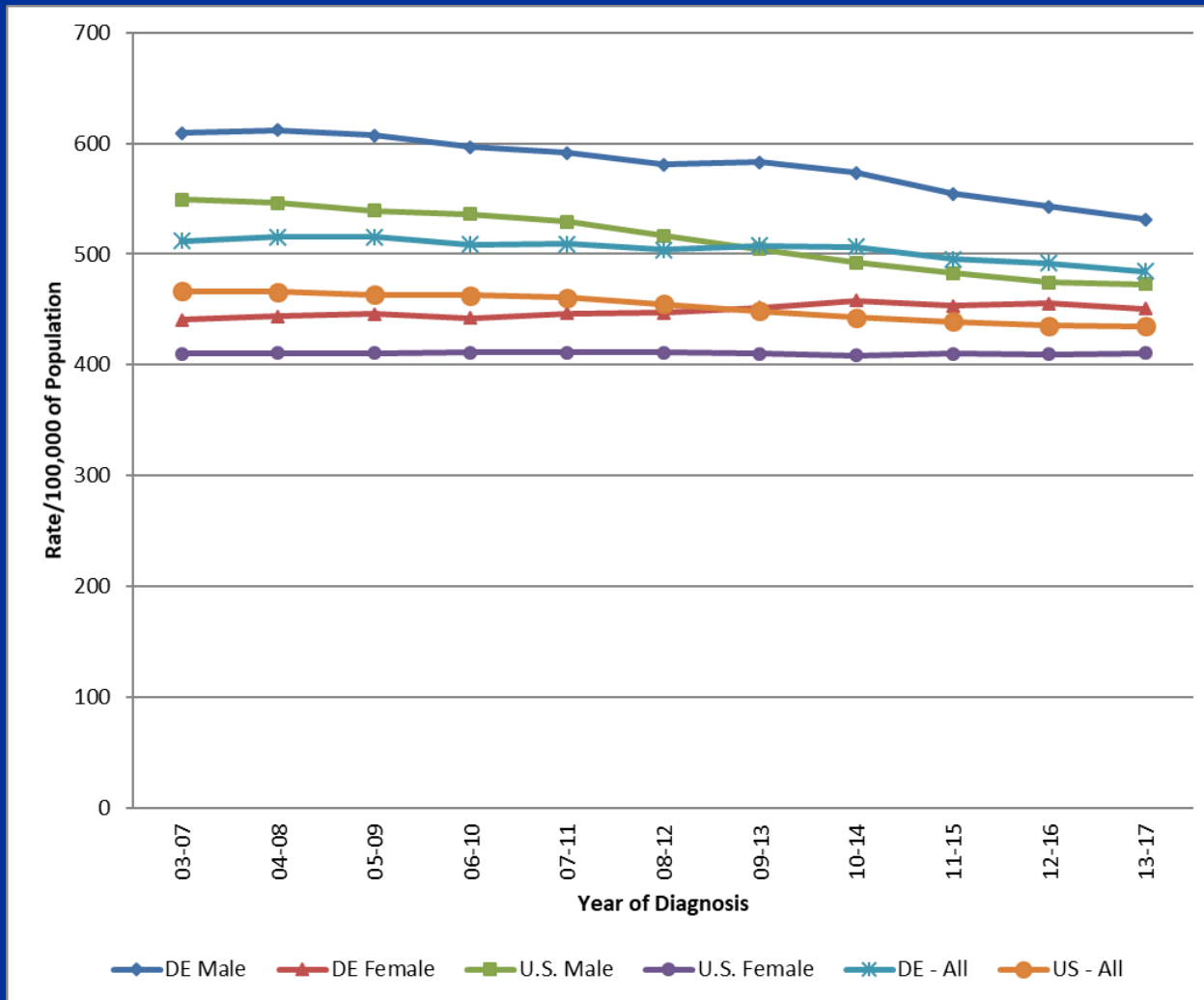


Most Commonly Diagnosed Cancers by Sex in Delaware, 2013-2017

MALES		
Site	Rate	% of cases
1. Prostate	125.5	26%
2. Lung	75.7	14%
3. Colorectal	44.3	8%
4. Urinary bladder	42.3	8%
5. Melanoma	38.9	7%
6. NHL	24.6	4%
7. Kidney	23.6	4%
8. Oral	19.7	4%
9. Leukemia	17.3	3%
10. Pancreas	16.9	3%

FEMALES		
Site	Rate	% of cases
1. Breast	135.4	30%
2. Lung	61.3	15%
3. Colorectal	32.9	7%
4. Uterine	30.7	7%
5. Thyroid	25.4	5%
6. Melanoma	22.5	5%
7. NHL	17.0	4%
8. Pancreas	12.1	3%
9. Kidney	11.8	3%
10. Ovary	11.0	2%

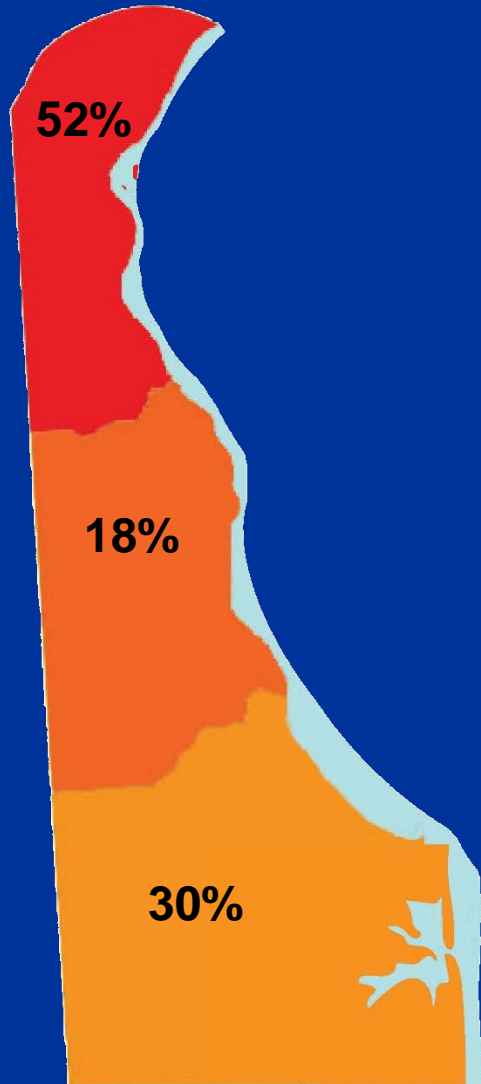
Five-Year Average Age-Adjusted All-Site Cancer Incidence Rates by Sex; U.S. and Delaware, 2003-2007 to 2013-2017



Source: *Cancer Incidence and Mortality in Delaware, 2013-2017*

ALL-SITE CANCER MORTALITY

All-site Cancer Mortality, Delaware, 2013-2017



- 10,096 deaths from cancer
 - average of 2,019 per year
- By sex
 - Male – 53%
 - Female – 47%
- By race/ethnicity
 - Non-Hispanic Caucasian – 80%
 - Non-Hispanic African American – 17%
 - Hispanic – 2%

All-Site Cancer Mortality, Delaware vs. U.S., 2013-2017

Delaware: 171.0 per 100,000

Statistically significantly higher than U.S. (158.3 per 100,000)

- *Unchanged* - 2013-2017 rank: 15th; 2012-2016 rank: 15th

Delaware males: 204.1 per 100,000

Statistically significantly higher than male U.S. (189.5 per 100,000)

- *Worsened* - 2013-2017 rank: 17th; 2012-2016 rank: 18th

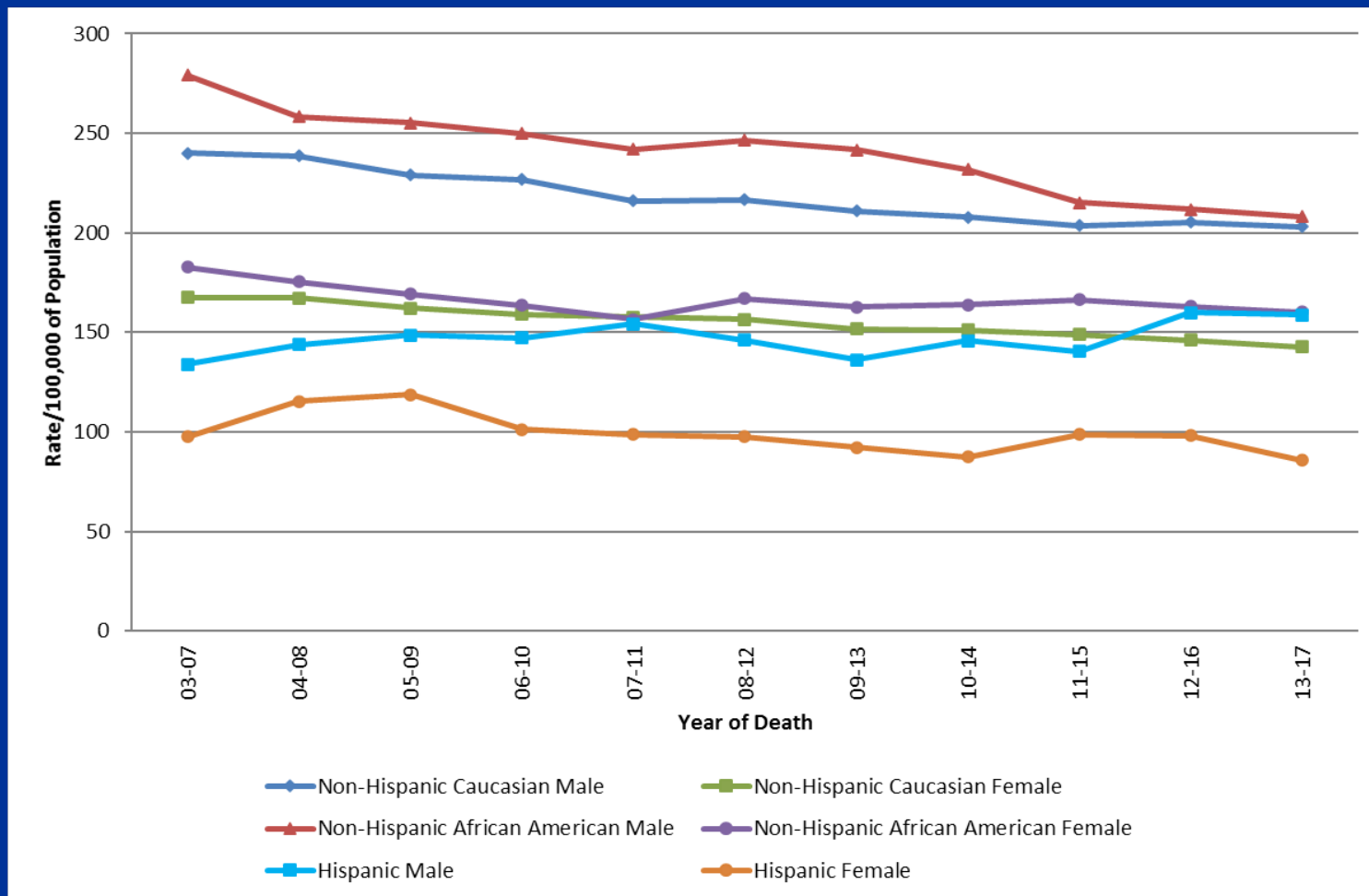
Delaware females: 146.3 per 100,000

Statistically significantly higher than U.S. (135.7 per 100,000)

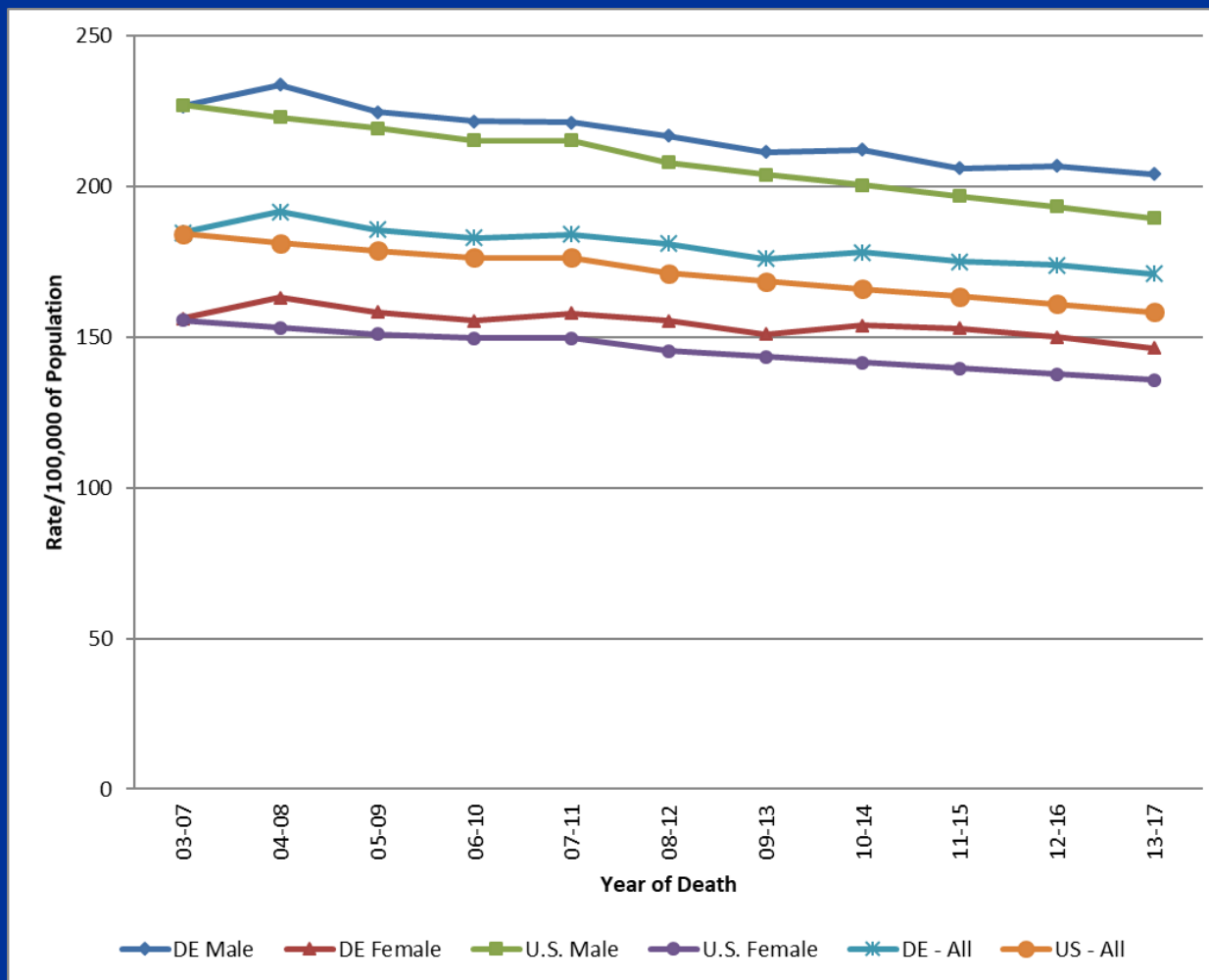
- *Improved* - 2013-2017 rank: 17th; 2012-2016 rank: 14th

Non-Hispanic Caucasians in Delaware had a statistically significantly higher mortality rate than non-Hispanic Caucasians in the U.S.

Five-Year Average Age-Adjusted All-Site Cancer Mortality Rates by Sex and Race/Ethnicity; Delaware, 2003-2007 to 2013-2017



Five-Year Average Age-Adjusted All-Site Cancer Mortality Rates by Sex; U.S. and Delaware, 2003-2007 to 2013-2017



Source: *Cancer Incidence and Mortality in Delaware, 2013-2017*

NOTABLE SITE-SPECIFIC CANCER DETAILS

Improvements by Cancer Site, Delaware, 2003-2007 to 2013-2017

- **Breast**

- Between 2003-2007 and 2013-2017, mortality rates for female breast cancer decreased by 2% in Delaware and 15% in the U.S.

- **Colorectal**

- Between 2003-2007 and 2013-2017, incidence rates for colorectal cancer decreased by 26% in Delaware and 21% in the U.S.
- Between 2003-2007 and 2013-2017, mortality rates for colorectal cancer decreased by 21% both in Delaware and in the U.S.

Improvements by Cancer Site, Delaware, 2003-2007 to 2013-2017

- **Lung**

- Between 2003-2007 and 2013-2017, incidence rates for lung cancer decreased by 17% in Delaware and 18% in the U.S.
- Between 2003-2007 and 2013-2017, mortality rates for lung cancer decreased by 20% in Delaware and 23% in the U.S.
- A larger percentage of lung cancers were diagnosed at local stage in Delaware (26%) than in the U.S. (22%).

- **Prostate**

- Between 2003-2007 and 2013-2017, incidence rates for prostate cancer decreased by 30% in Delaware and 33% in the U.S.
- Between 2003-2007 and 2013-2017, mortality rates for prostate cancer decreased by 31% in Delaware and 24% in the U.S.

Delaware Cancers Sites with Statistically Significant Differences from the U.S. vs. Cancer Sites with no Statistically Significant Differences, 2013-2017

Delaware Incidence Rate Statistically Significantly Higher than U.S.
All-site
Female breast
Lung/bronchus
Prostate
Oral cavity

Delaware Incidence Rate Not Statistically Significantly Different from U.S.
Colorectal
Kidney and renal pelvis
Cervical
Leukemia

Source: *Cancer Incidence and Mortality in Delaware, 2013-2017*

Cancer Sites with Large Increases in Incidence, Delaware, 2003-2007 to 2013-2017

Cancer Site	Delaware Percent change 2003-2007 to 2013-2017	U.S. Percent change 2003-2007 to 2013-2017
Leukemia	+19	+8
Oral Cavity	+18	+7

Source: *Cancer Incidence and Mortality in Delaware, 2013-2017*

Cancer Sites with Dramatic Decreases in Incidence, Delaware, 2003-2007 to 2013-2017

Cancer Site	Delaware Percent change 2003-2007 to 2013-2017	U.S. Percent change 2003-2007 to 2013-2017
Colorectal	-26	-21
Prostate	-30	-33

Source: *Cancer Incidence and Mortality in Delaware, 2013-2017*

Cancer Sites with Dramatic Increases in Mortality, Delaware, 2003-2007 to 2013-2017

Cancer Site	Delaware Percent change 2003-2007 to 2013-2017	U.S. Percent change 2003-2007 to 2013-2017
Cervical	+30	-4

Source: *Cancer Incidence and Mortality in Delaware, 2013-2017*

Cancer Sites with Dramatic Decreases in Mortality, Delaware, 2003-2007 to 2013-2017

Cancer Site	Delaware Percent change 2003-2007 to 2013-2017	U.S. Percent change 2003-2007 to 2013-2017
Colorectal	-21	-21
Lung/bronchus	-20	-23
Prostate	-31	-24

Source: *Cancer Incidence and Mortality in Delaware, 2013-2017*

Breast Cancer and Delaware Initiatives

- From 2003-2007 to 2013-2017, Delaware's breast cancer incidence rate increased by 8%.
- During the same time period, Delaware's breast cancer mortality rate decreased 2%.
- It is likely that improvements in the early detection of breast cancer contributed to Delaware's progress in reduced breast cancer mortality.

Breast Cancer and Delaware Initiatives

- Delaware has implemented several evidence-based interventions designed to increase breast cancer screenings among priority populations. This includes:
 - Reducing out of pocket expenses for underserved communities
 - Patient navigation
 - Provider and patient reminders
 - Provider education
 - Community outreach
 - Marketing

Cancer Screening

- The Behavioral Risk Factor Survey (BRFS) collects information on cancer screening.
- **Breast cancer** – Delaware ranks 17th nationally for mammography.
 - 73% of Delaware females 40 and older were screened for breast cancer in the previous 2 years compared to 72% nationally
- **Colorectal cancer** – Delaware ranks 10th nationally for meeting USPSTF colorectal cancer screening.
 - 78% of Delawareans met the USPSTF recommendations compared to 74% nationally
- **Prostate cancer** – Delaware ranks 15th for PSA tests.
 - 33% of Delaware males 40 and older has a PSA test in the past 2 years compared to 32% nationally

Cancer Prevention

- **Tobacco use is the leading risk factor.**
 - In 2020, 15% of Delawareans were current smokers, almost the same as nationally (16%).
 - Contributes to many cancers including lung, esophagus, kidney, urinary bladder, stomach, and pancreas
- **Lack of physical activity and unhealthy eating** are associated with increased risk of multiple cancers.
- **Alcohol abuse** is a risk factor for many cancers.
- **Excessive sun exposure** is a risk factor for melanoma.

Summary

- **Delaware continues to:**
 - Have the second highest cancer incidence in the nation even though incidence rates are declining.
 - Rank 15th nationally for cancer mortality.
- **Cancer screening rates continue to be high in Delaware:**
 - An increasing number of cancers are diagnosed at earlier, more treatable stages.
 - Delaware has several initiatives in place to help increase breast cancer screenings for improvements in early detection.
- **There need to be continued efforts to:**
 - Improve and enhance not only cancer screening, but also cancer prevention in Delaware by addressing behavioral risk factors and social determinants of health.

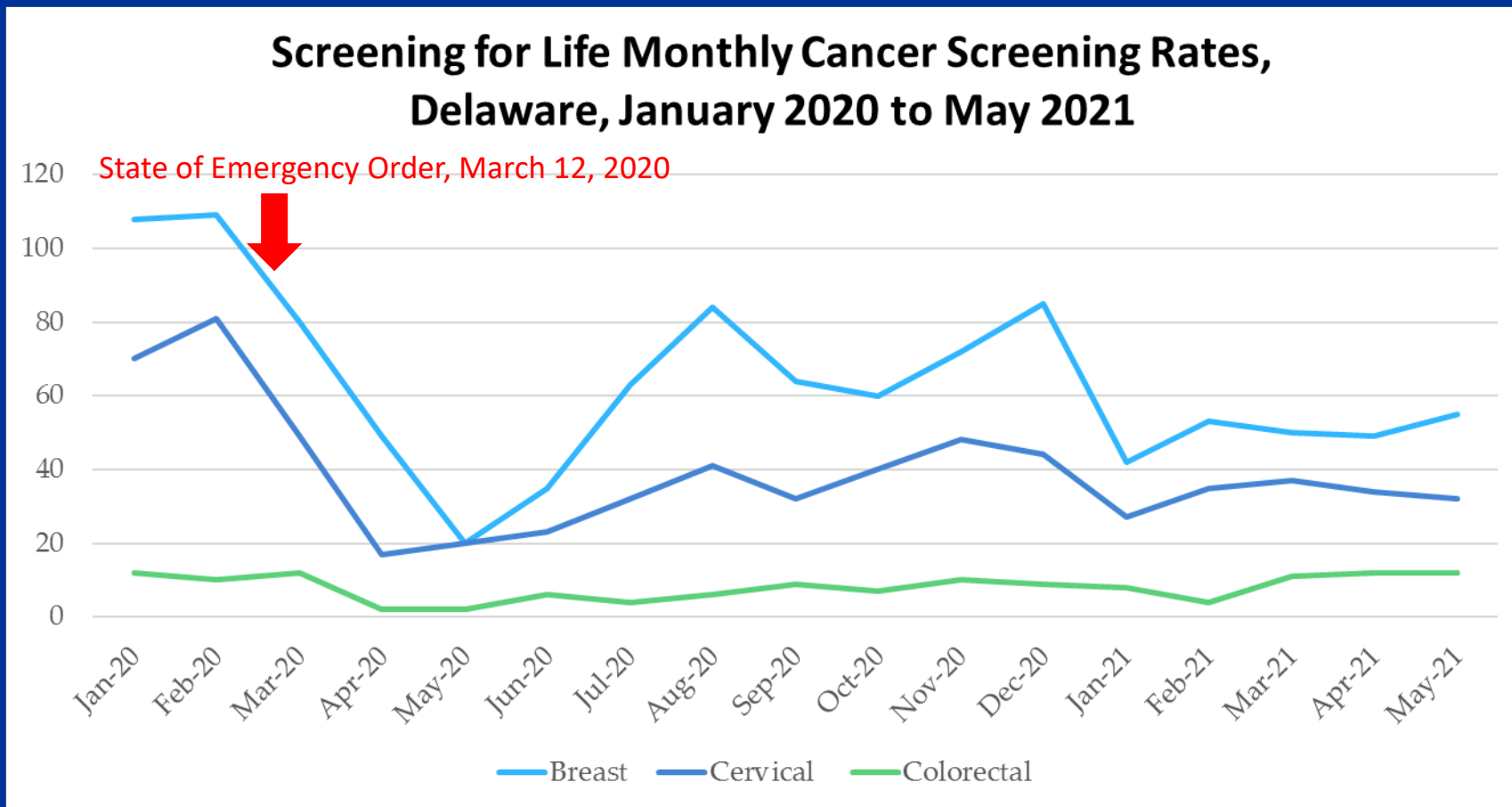
The full reports can be
found at

[http://dhss.delaware.gov/
dph/dpc/cancer.html](http://dhss.delaware.gov/dph/dpc/cancer.html)

Discussion/Wrap Up

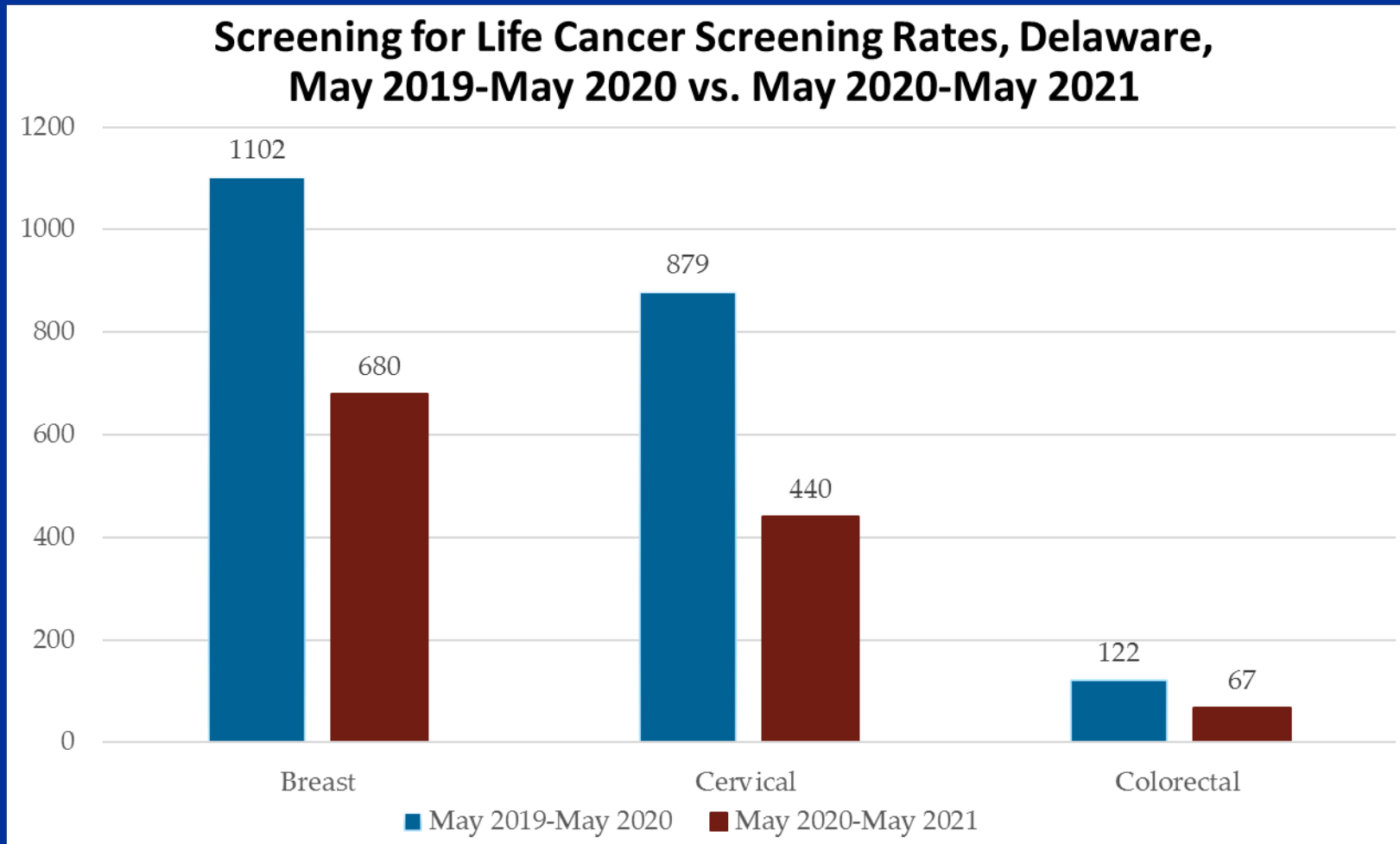
Karyl Rattay, MD, MS
Director
Division of Public Health

Impact of COVID-19 Pandemic on Cancer Screening Rates in Delaware



Source: Delaware Department of Health and Social Services, Division of Public Health, Screening For Life (SFL) program, August 2021

Changes in Cancer Screenings



Source: Delaware Department of Health and Social Services, Division of Public Health, Screening For Life (SFL) program, August 2021

COVID-19 and Cancer

- **COVID-19 highlighted inequalities in health care access.**
 - Populations with low socioeconomic status, including African American, Hispanic, and Native American people, have a disproportionate burden of chronic disease, SARS-CoV-2 infection, hospitalization, and mortality.
 - The pandemic intensified already existing inequalities. It will take an approach utilizing Social Determinants of Health (SDoH) to address chronic disease concerns.
- **Achieving health equity is a priority across HHS and DPH**
 - CDC is shifting funding to address SDoH and emphasize health equity.
 - DPH is focused on SDoH and equity across the Division.

Healthy Communities Delaware (HCD)

- **Goal:** To improve *health, well-being and equity* in low-wealth Delaware communities through *alignment, investment and impact*
- A network of partners, managed as a collaboration among:
 - Delaware Division of Public Health
 - University of Delaware Partnership for Healthy Communities
 - Delaware Community Foundation
- Long-term initiative to advance *healthy, safe and vibrant communities*
- Work *in partnership* with communities on resident-driven priorities related to the social determinants of health

\$1.4m Investment in Vital Conditions/SDOH

Community
Vitality



Education



Environment



Food & Agriculture



Financial Health &
Wealth



Humane Housing



Job Creation &
Workforce Development



Public Safety



Health System &
Services



Transportation



Thriving People & Places

Outcomes: Leveraged and Aligned Funding

- Investment through HCD: \$1.4 million
- Aligned Funding: **Over \$3.3 million**
 - DHSS CARES Act funding
 - DPH PANO
 - DPH Health Equity
 - Partnership for Healthy Communities - MPH students
- Leveraged due to HCD: **Over \$2 million**
 - Nemours
 - Cornerstone West
 - Central Baptist CDC
 - Be Ready CDC
 - La Esperanza



Leveraged Funding Outcome Example 2020-21

La Esperanza (Georgetown, Western Sussex County)

- Resource Navigation and Family Coaching to provide bi-lingual services (funding for staff)
- HCD Funding: \$48,000
- Funding Leveraged: \$350,000
- Direct financial support to immigrants who do not have access to other resources.
- La Esperanza community guides screened clients for self-sufficiency, provided relevant referrals, and connected them with the financial resources.
- Having staff in place, both at La Esperanza and in the community in Georgetown, Seaford and Bridgeville (soon to be Milford and Laurel), made these resources more accessible to a wider range of families.



Dover Communities

NCALL Research, Inc.

Community-driven priorities identified

- o Community Need Assessment and Action Plan
 - Derby Estates, Manchester Square & Willis Rd. Commons



Eastside, Wilmington

Central Baptist CDC & Habitat for Humanity of NCC

Increased food security and increased access to healthy food

- 8,136 home deliveries of fresh produce to low-income families (NCC)
- 1 Food Access Initiative Business Plan

Increased affordable housing

- 1 Housing Market Analysis

Increased community and home safety

- 272 revitalization services for 152 residents (e.g., AC/furnace tune-ups, video doorbell installation, gutter cleaning, etc.)

Increased access to safe spaces that support well-being/health

- 1 Architectural plan for community center

Increased capacity to support community change

- 2 Staff members employed to support community change



My Healthy Community portal

<https://myhealthycommunity.dhss.delaware.gov/>

The screenshot displays the My Healthy Community portal interface. At the top, there is a navigation bar with 'Delaware.gov' and links for 'Agencies', 'News', 'Topics', and 'Contact'. Below this is a secondary navigation bar with 'Coronavirus Dashboard', 'Population Health Dashboard', and a search bar. The main content area is titled 'CHRONIC DISEASE' and includes a sub-header 'ASTHMA'. A table provides key statistics for Asthma Emergency Department Visits in 2017, comparing Delaware's performance to the United States benchmark. The table shows a count of 3,823 visits, an age-adjusted rate of 43.1, and a 14% increase from 2016 to 2017. A trend line graph shows the rate increasing from 2016 to 2017.

COUNT	AGE-ADJUSTED RATE * (2017)	BENCHMARK	% CHANGE (2016-2017)	TREND (2016-2017)
3,823	43.1		↑ 14%	
	RATE			
	41			

Thank You!

For more information:

**Division of Public Health
Comprehensive Cancer Program**

<https://www.dhss.delaware.gov/dhss/dph/dpc/cancer.html>

302-744-1020



DELAWARE HEALTH AND SOCIAL SERVICES

Division of Public Health

Comprehensive Cancer Control Program