

---

# Cancer Incidence and Mortality in Delaware

Paul Silverman, Dr. P.H

Division of Public Health

Delaware Health and Social Services

March 15 2004



- 
- ◆ The Report
  - ◆ Natural History of Cancer
  - ◆ Big Picture
  - ◆ Delaware Trends
  - ◆ Delaware Compared to U.S.
  - ◆ Racial Disparities
  - ◆ Stage of Diagnosis



- 
- ◆ **The Report**
  - ◆ Natural History of Cancer
  - ◆ Big Picture
  - ◆ Delaware Trends
  - ◆ Delaware Compared to U.S.
  - ◆ Racial Disparities
  - ◆ Stage of Diagnosis



# The Report

[www.deph.org](http://www.deph.org)

---

## Delaware Cancer Incidence and Mortality Rates



February 2004

Delaware Division of Public Health  
**Department of Health and Social Services**  
Dover, Delaware

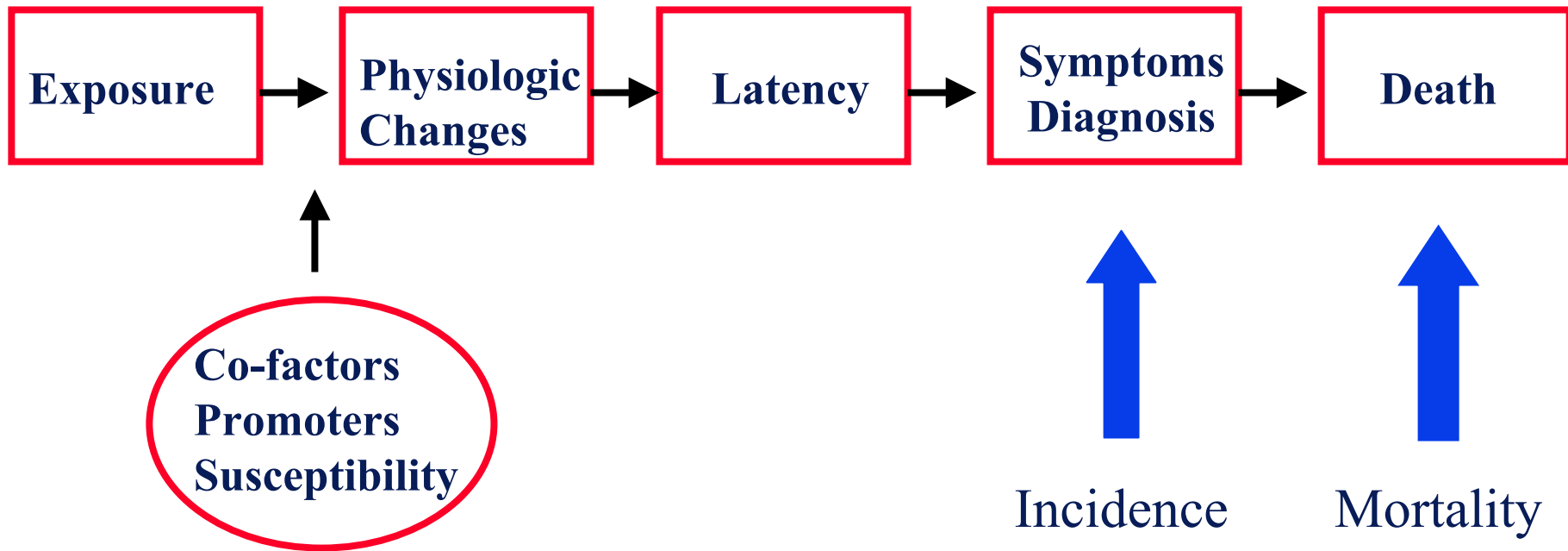


- 
- ◆ The Report
  - ◆ Natural History of Cancer
  - ◆ Big Picture
  - ◆ Delaware Trends
  - ◆ Delaware Compared to U.S.
  - ◆ Racial Disparities
  - ◆ Stage of Diagnosis



# Incidence and Mortality

---



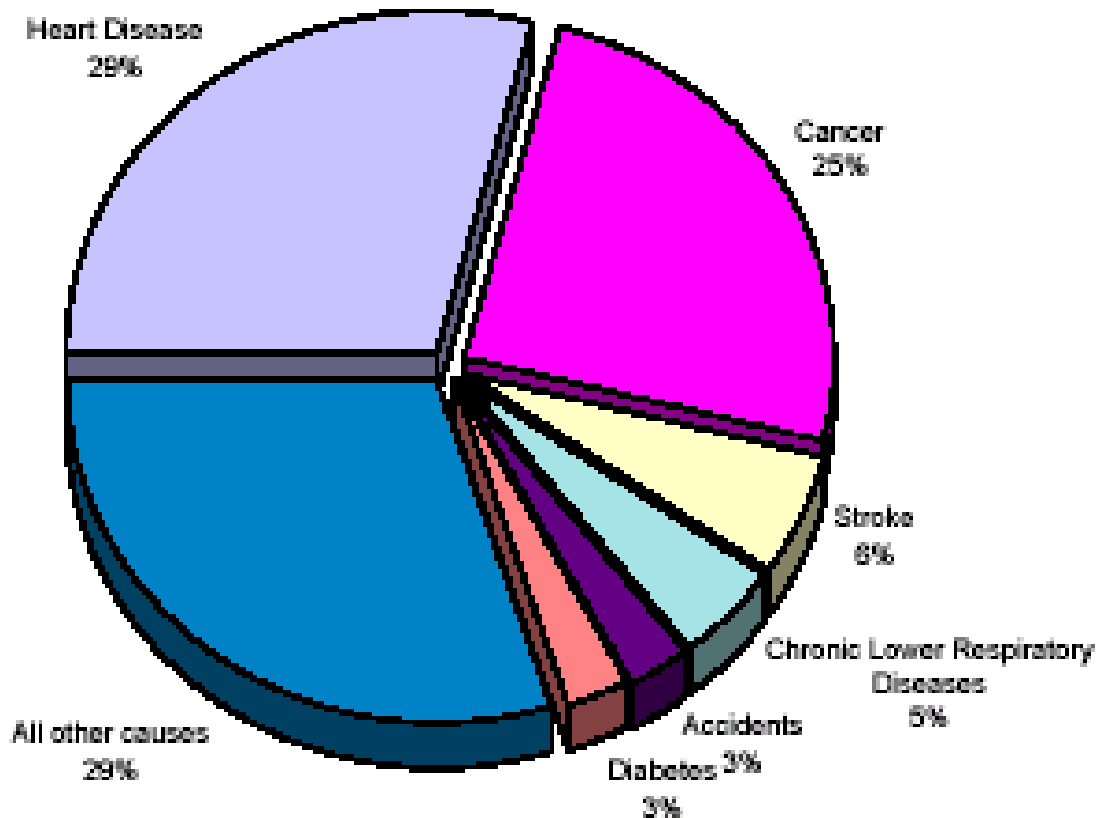
- 
- ◆ The Report
  - ◆ Natural History of Cancer
  - ◆ **Big Picture**
  - ◆ Delaware Trends
  - ◆ Delaware Compared to U.S.
  - ◆ Racial Disparities
  - ◆ Stage of Diagnosis



# Leading Causes of Death

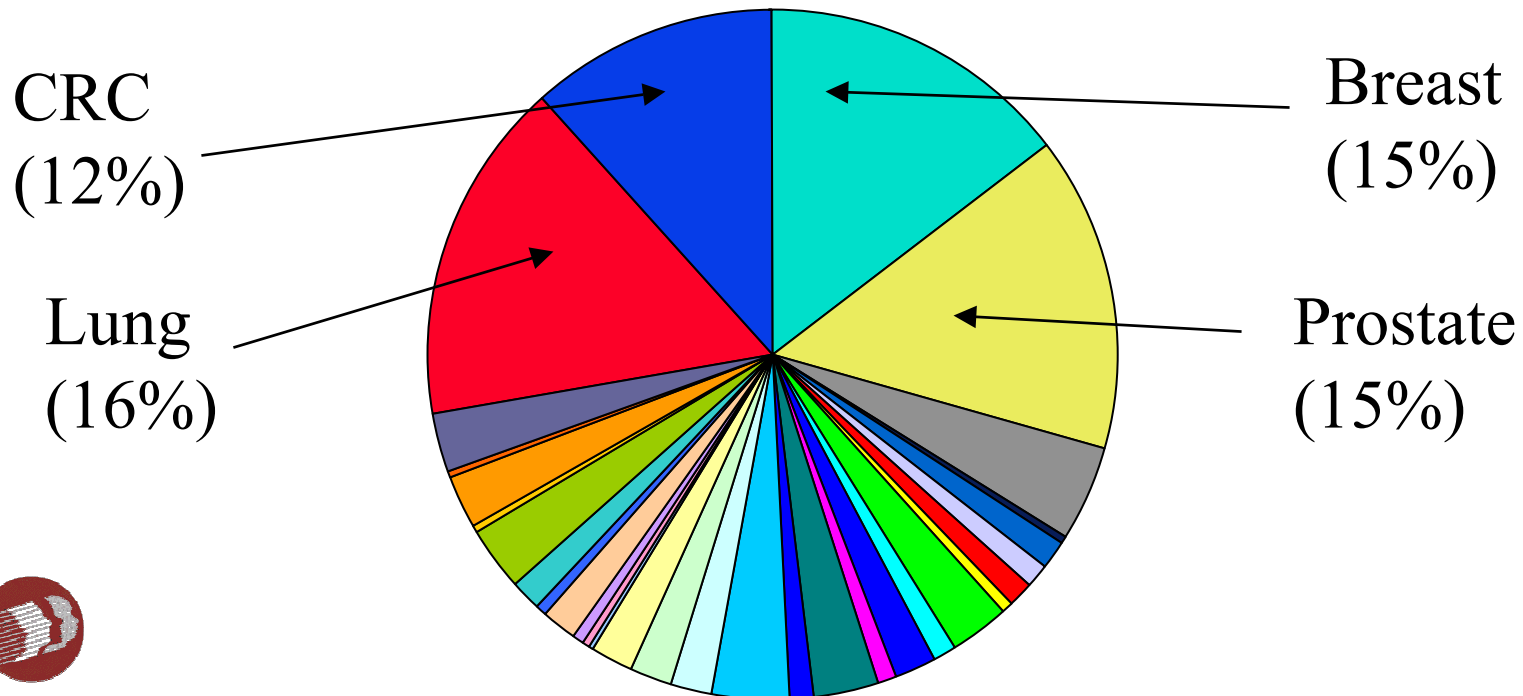
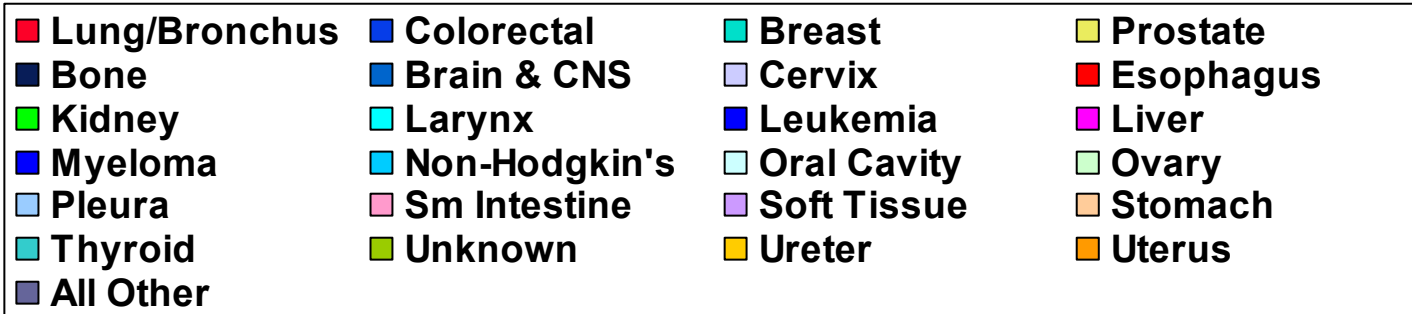
---

Leading Causes of Death  
Delaware, 1999 - 2001

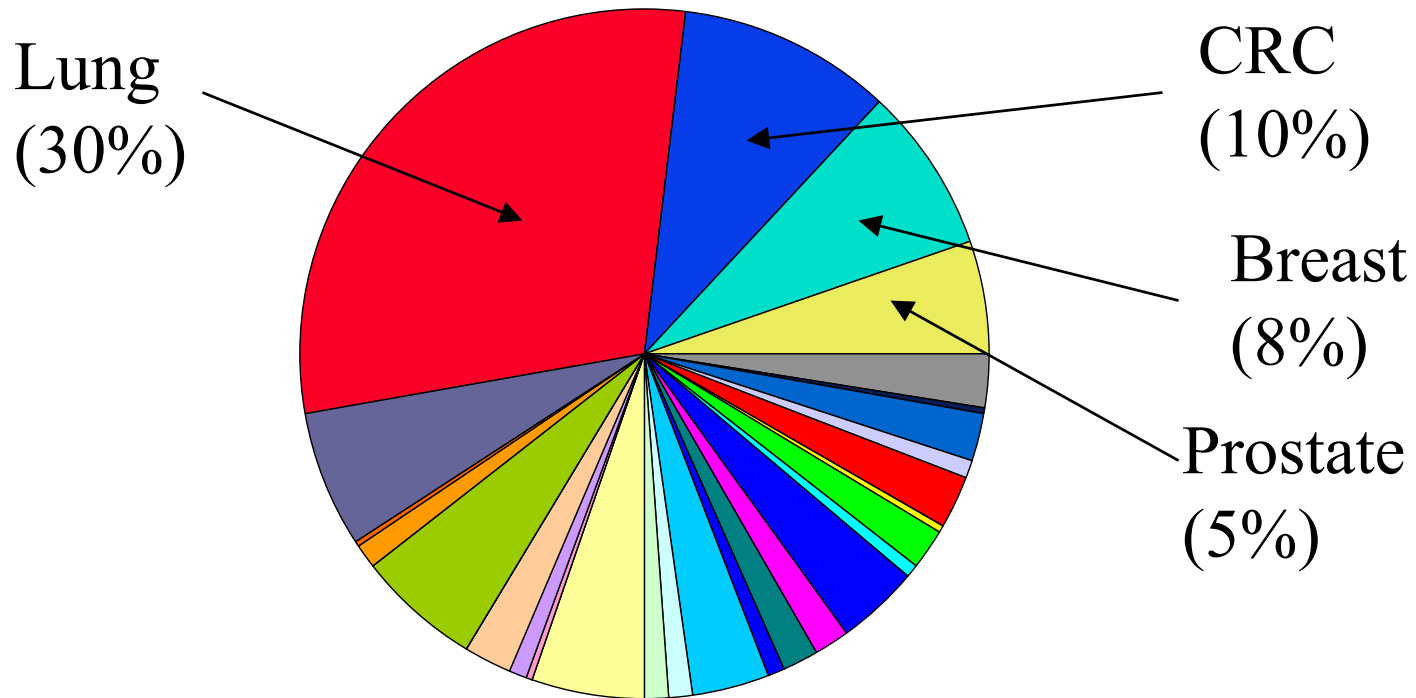
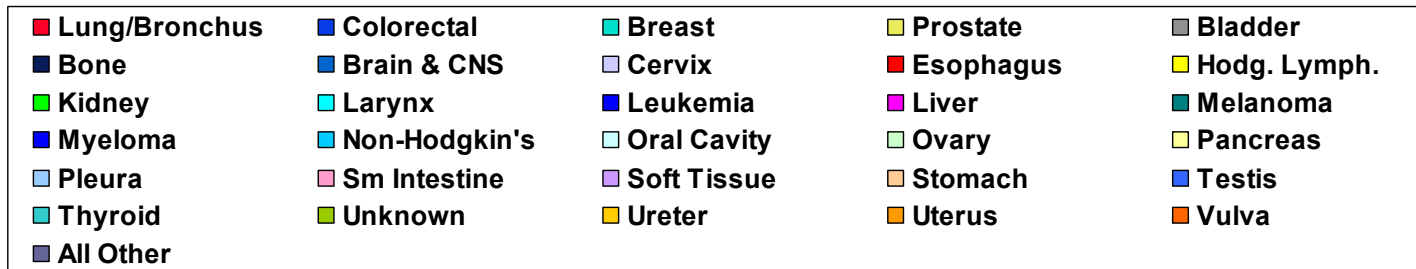




# Cancer Incidence, 1997-2001, Delaware

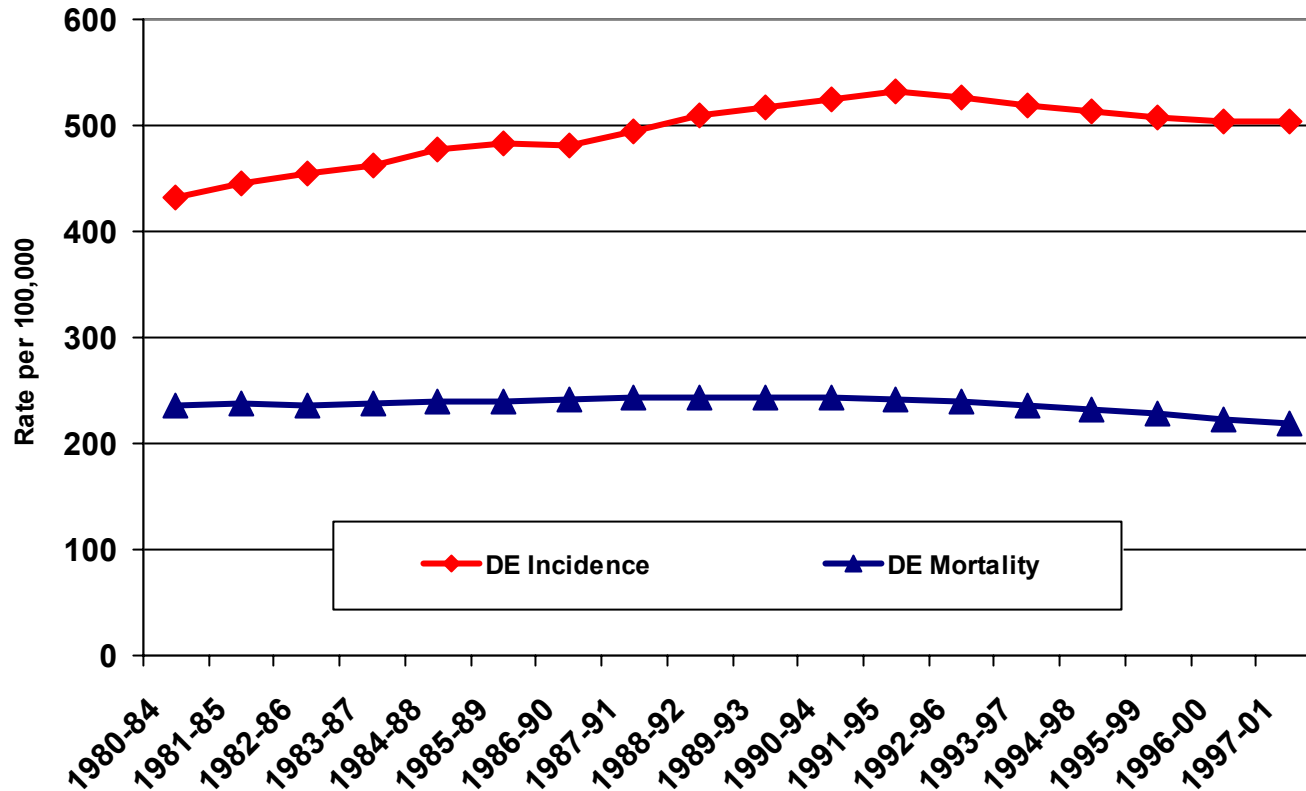


# Cancer Deaths, 1997-2001, Delaware



# Overall Trend

Cancer Incidence and Mortality Average Annual Age-adjusted Rates per 100,000, Delaware

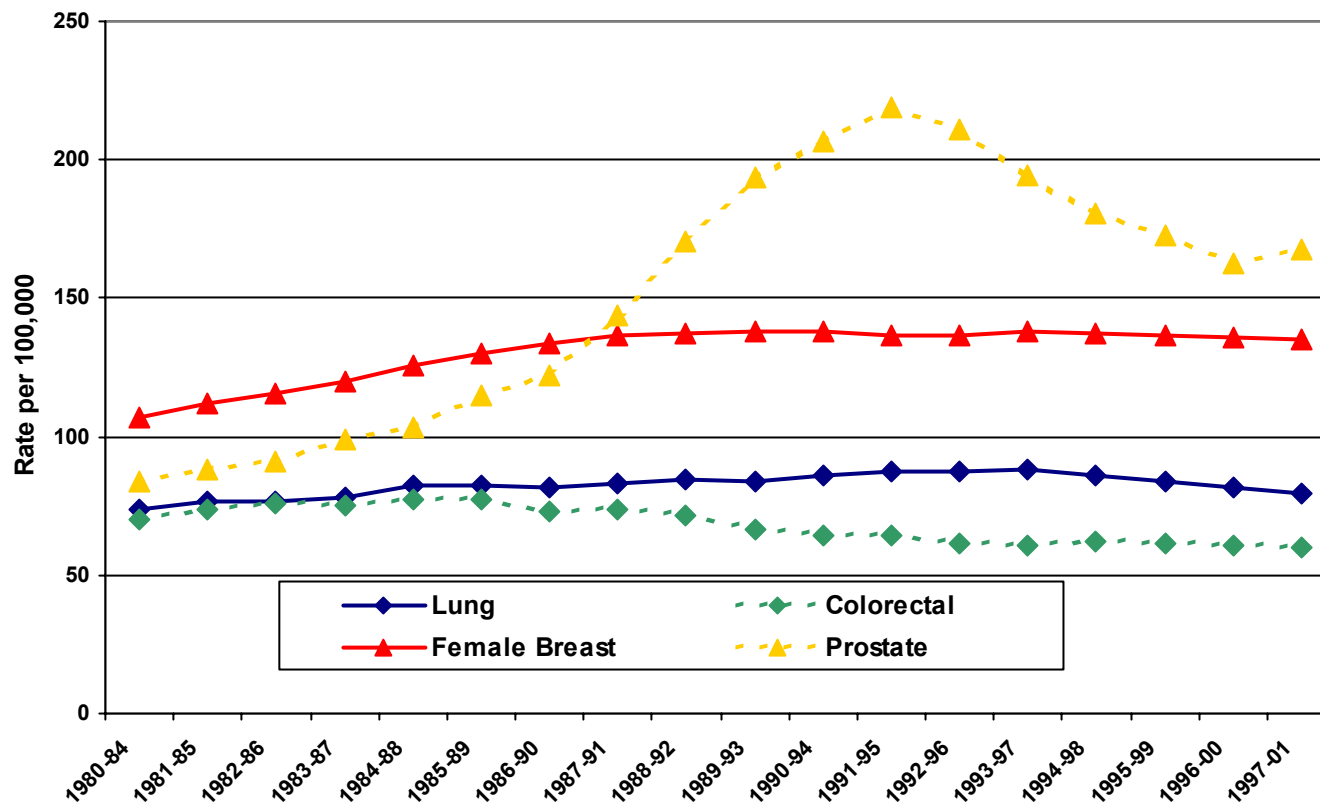


- 
- ◆ The Report
  - ◆ Natural History of Cancer
  - ◆ Big Picture
  - ◆ Delaware Trends
  - ◆ Delaware Compared to U.S.
  - ◆ Racial Disparities
  - ◆ Stage of Diagnosis



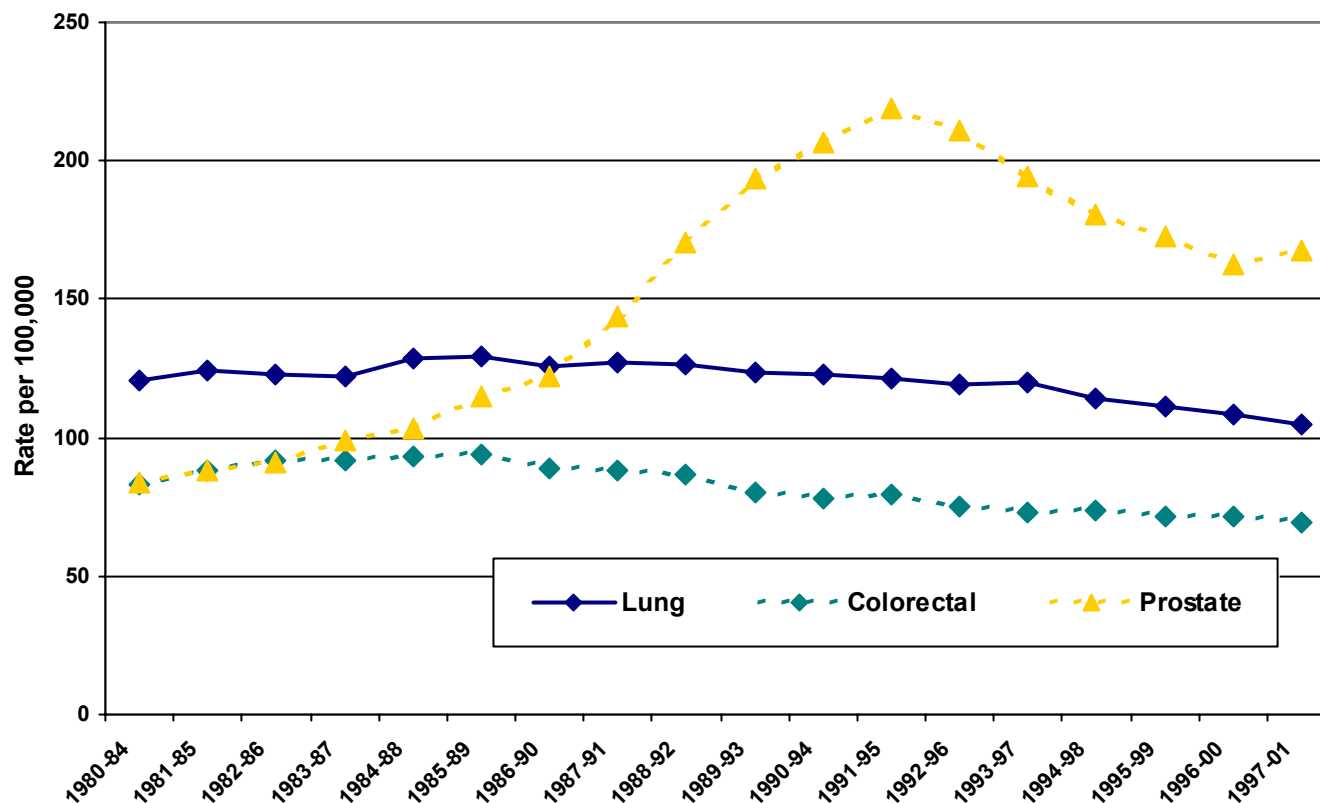
# Incidence of Selected Cancers

Cancer Incidence Age-adjusted rates per 100,000,  
Delaware



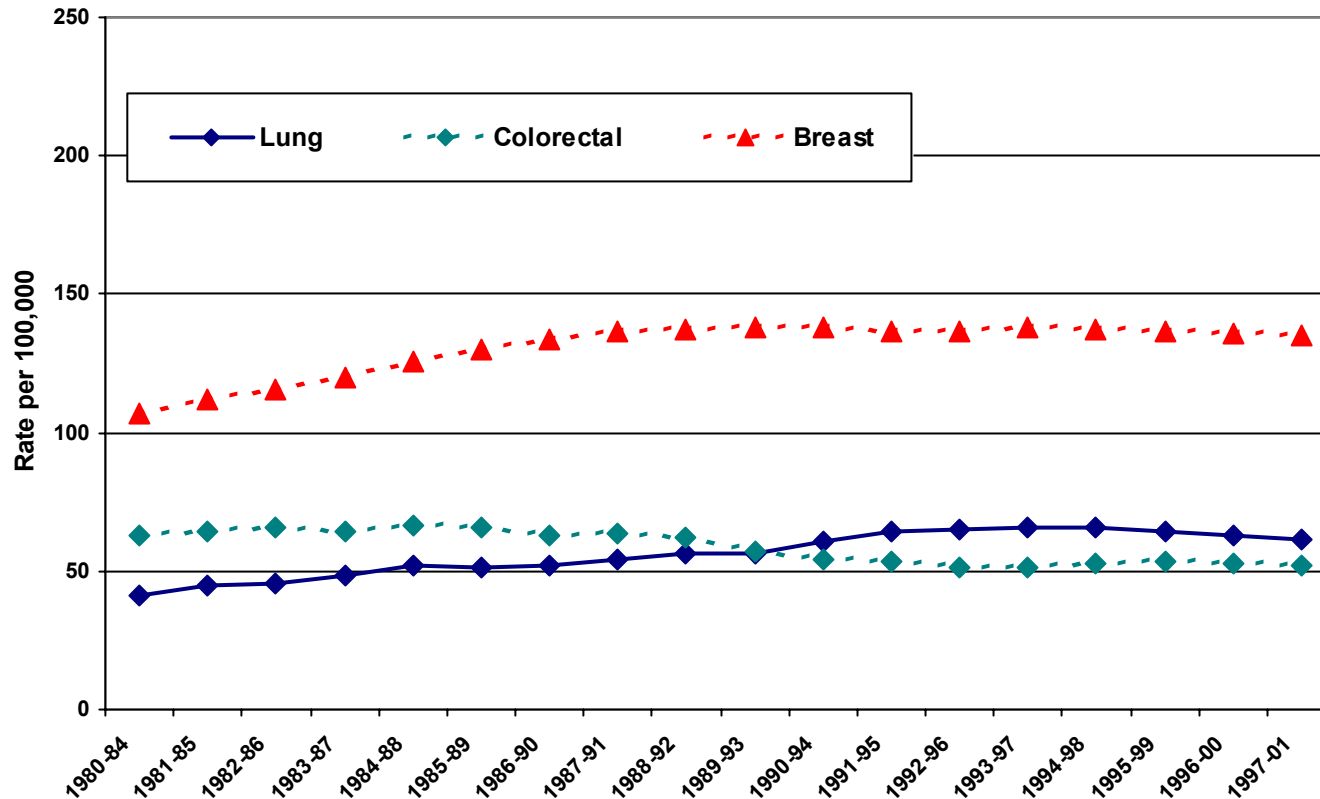
# Incidence of Selected Cancers, Men

Cancer Incidence Average Annual Age-adjusted Rates per 100,000, Delaware, Males



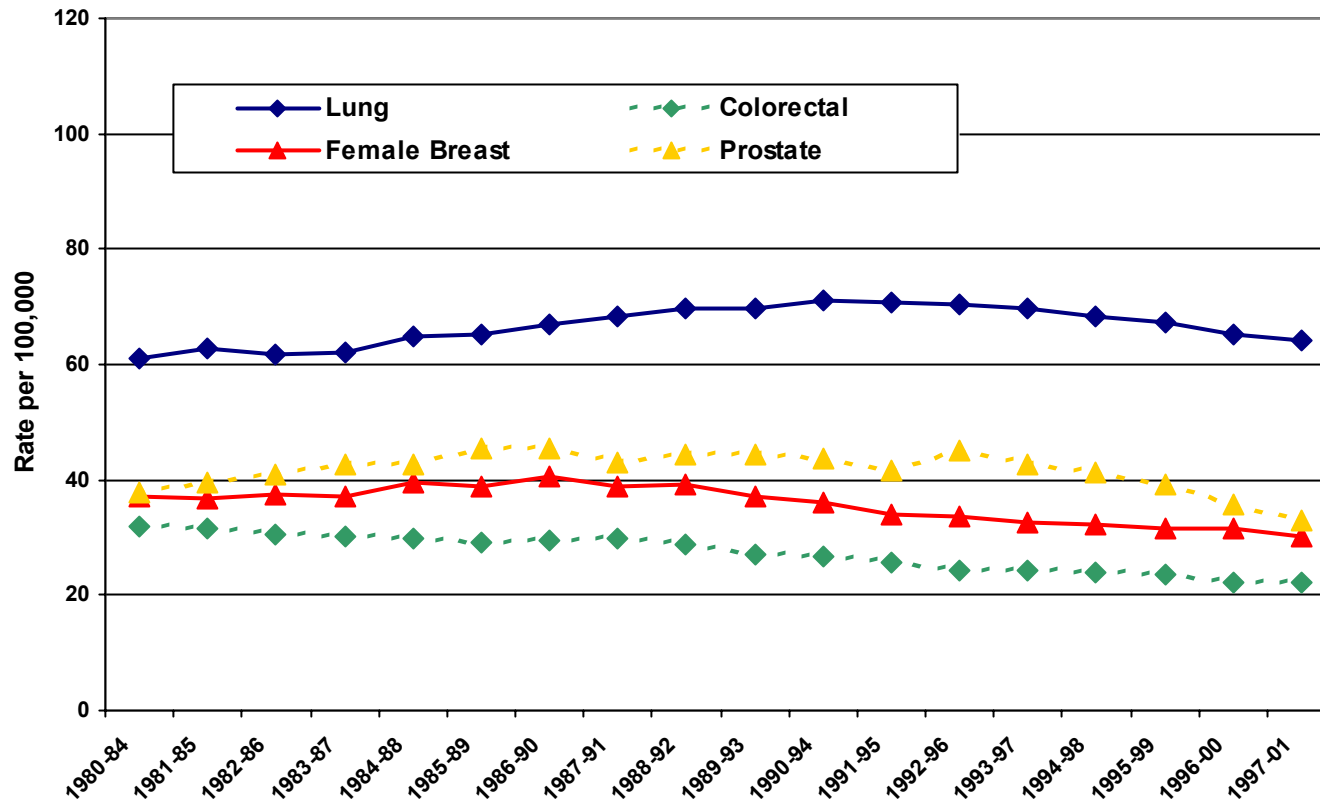
# Incidence of Selected Cancers, Women

Cancer Incidence Average Annual Age-adjusted Rates per 100,000, Delaware, Females



# Mortality from Selected Cancers

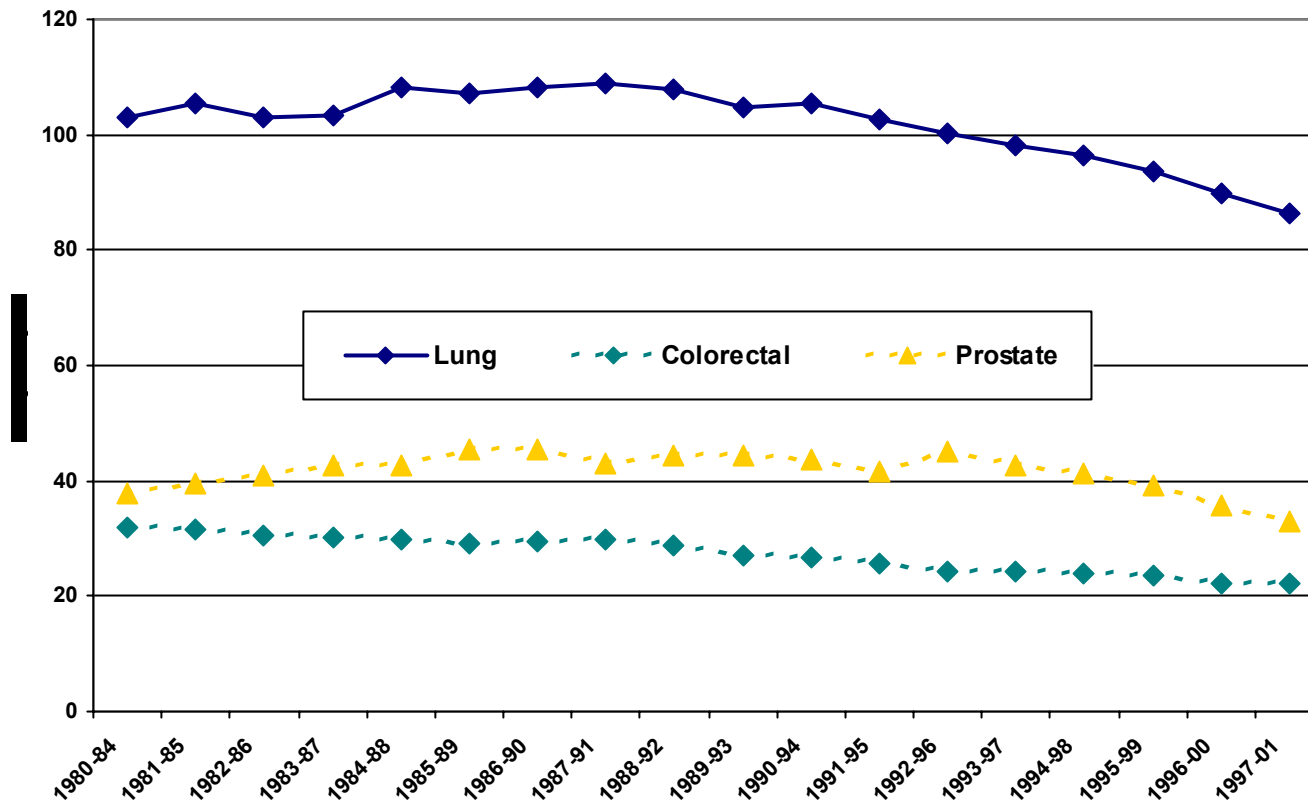
Cancer Mortality Age-adjusted rates per 100,000, Delaware





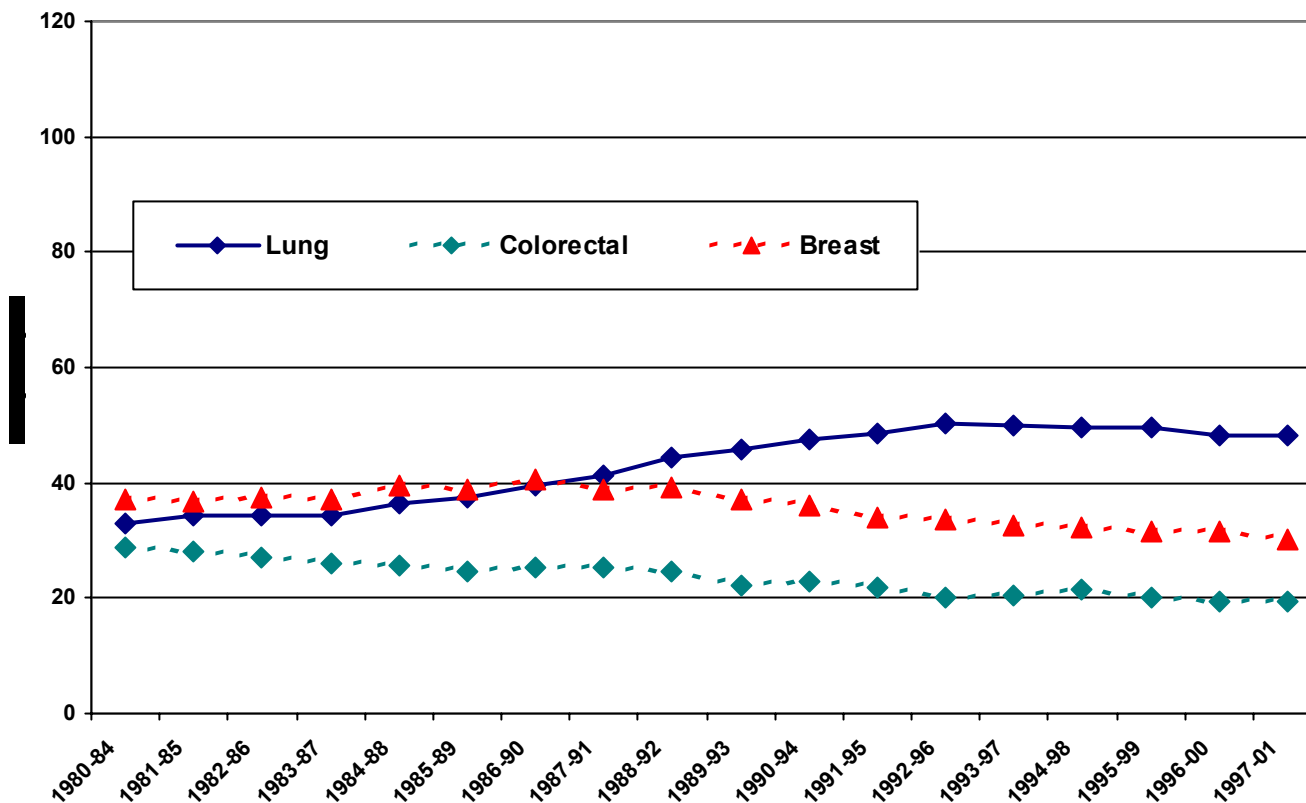
# Mortality from Selected Cancers, Men

Cancer Mortality Average Annual Age-adjusted Rates per 100,000, Delaware, Males



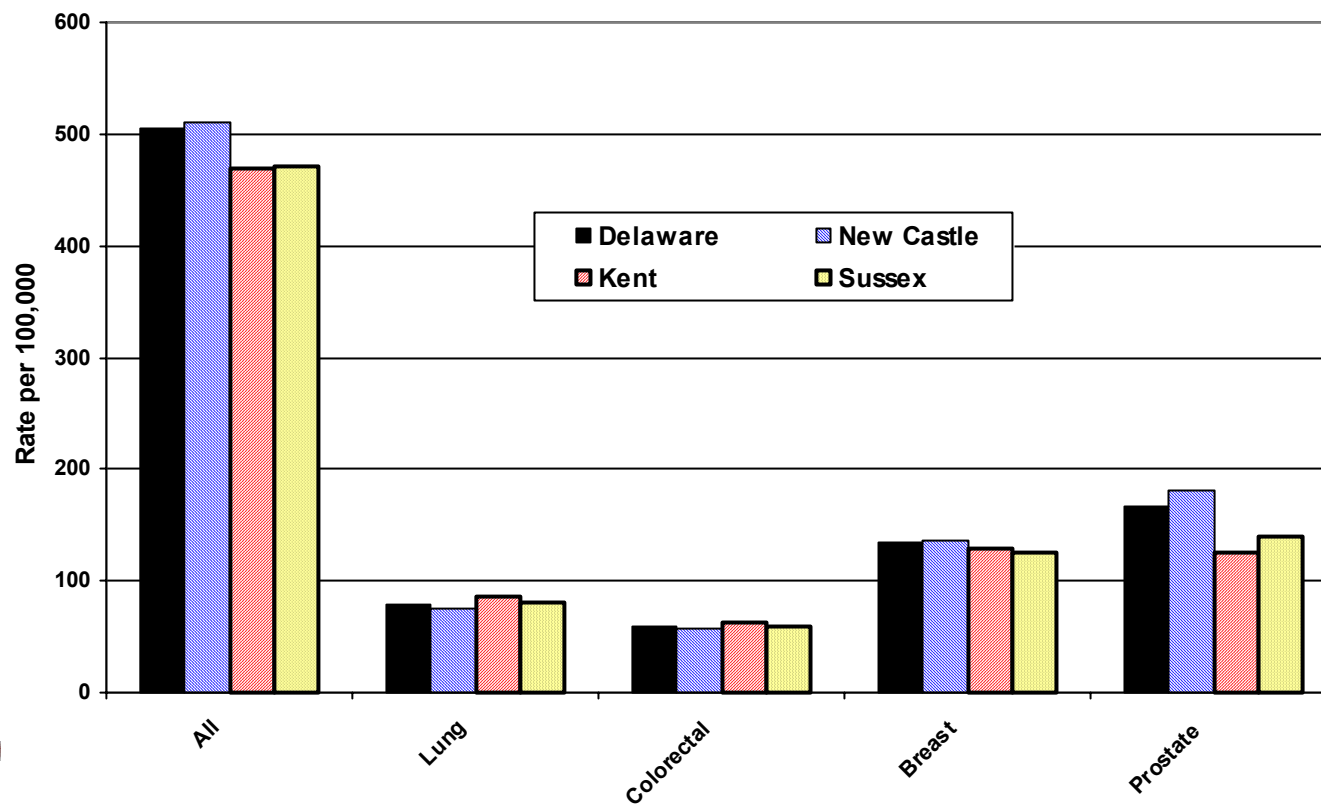
# Mortality from Selected Cancers, Women

Cancer Mortality Average Annual Age-adjusted Rates per 100,000, Delaware, Females



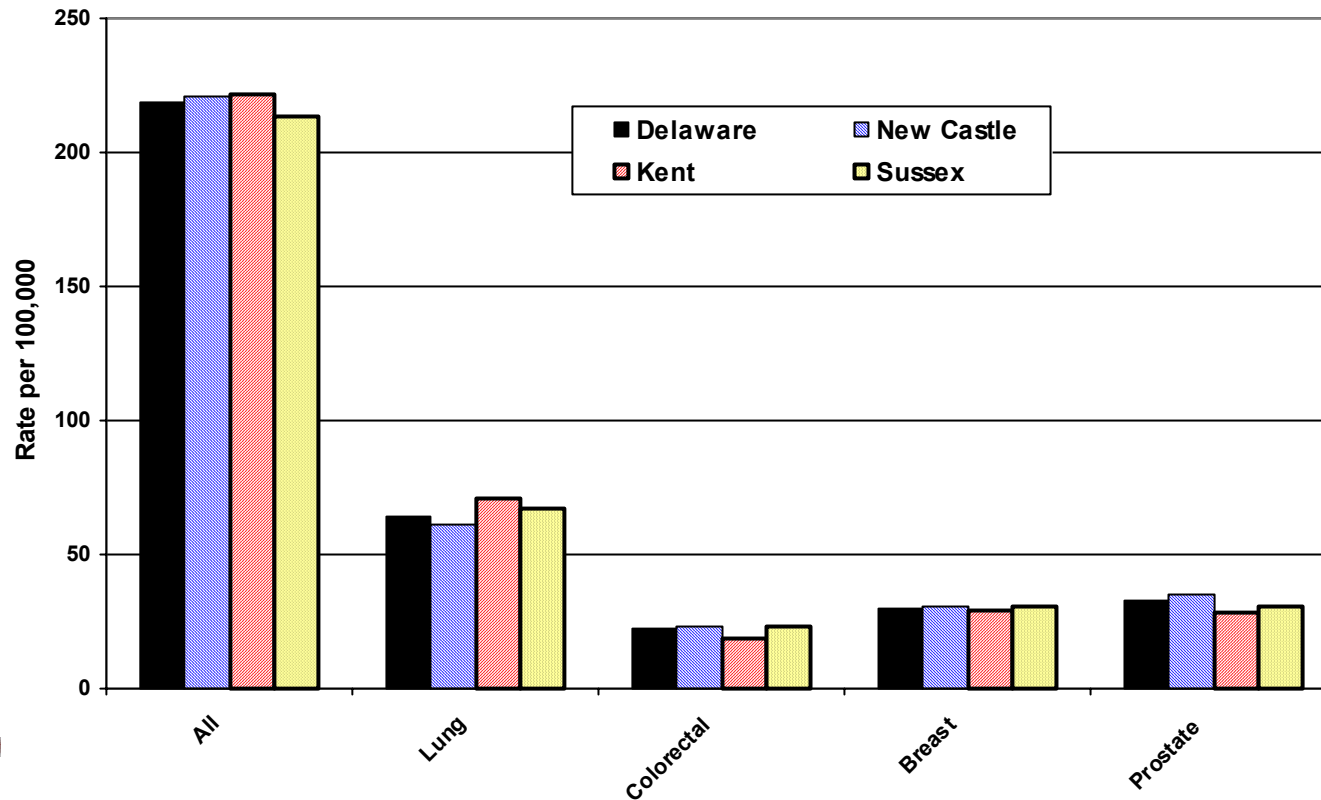
# Incidence by County

Cancer Incidence Average Annual Age-adjusted Rates  
per 100,000, Delaware, 1997-2001



# Mortality by County

**Cancer Mortality Average Annual Age-adjusted Rates  
per 100,000, Delaware, 1997-2001**

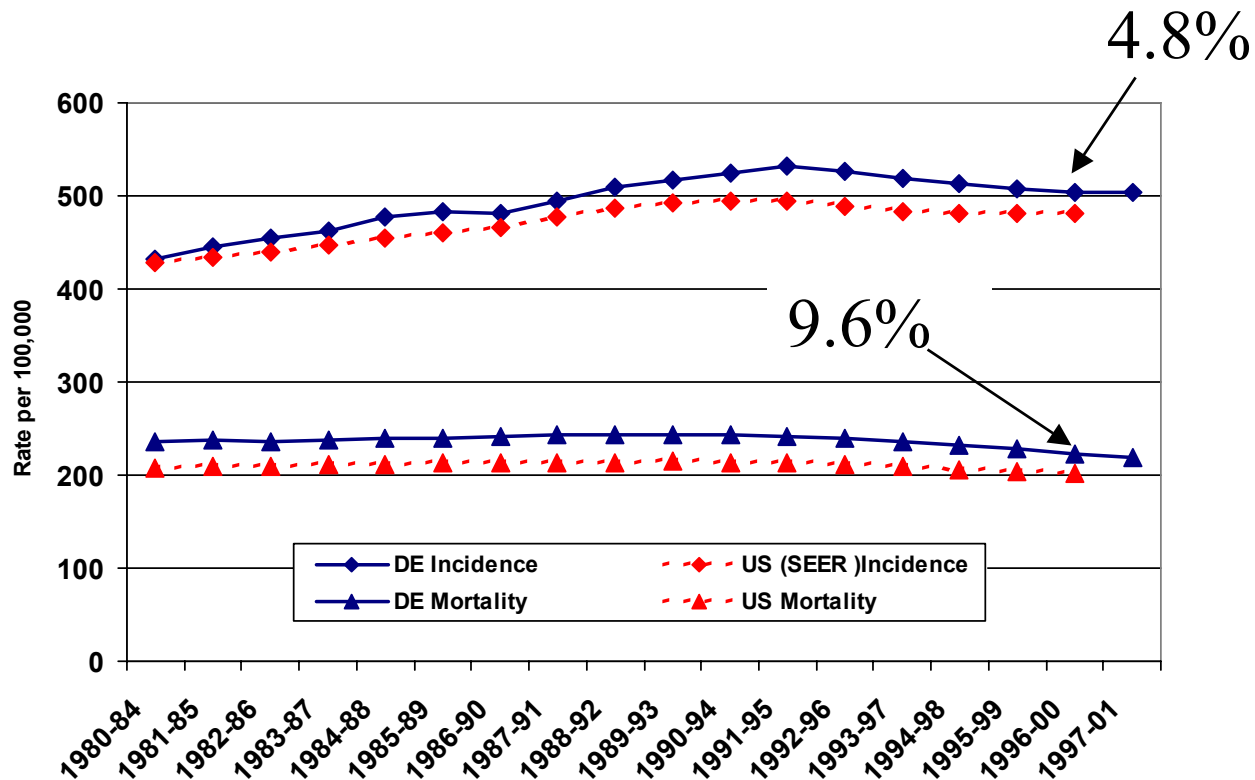


- 
- ◆ The Report
  - ◆ Natural History of Cancer
  - ◆ Big Picture
  - ◆ Delaware Trends
  - ◆ Delaware Compared to U.S.
  - ◆ Racial Disparities
  - ◆ Stage of Diagnosis



# Delaware Cancer Rates Compared to U.S.

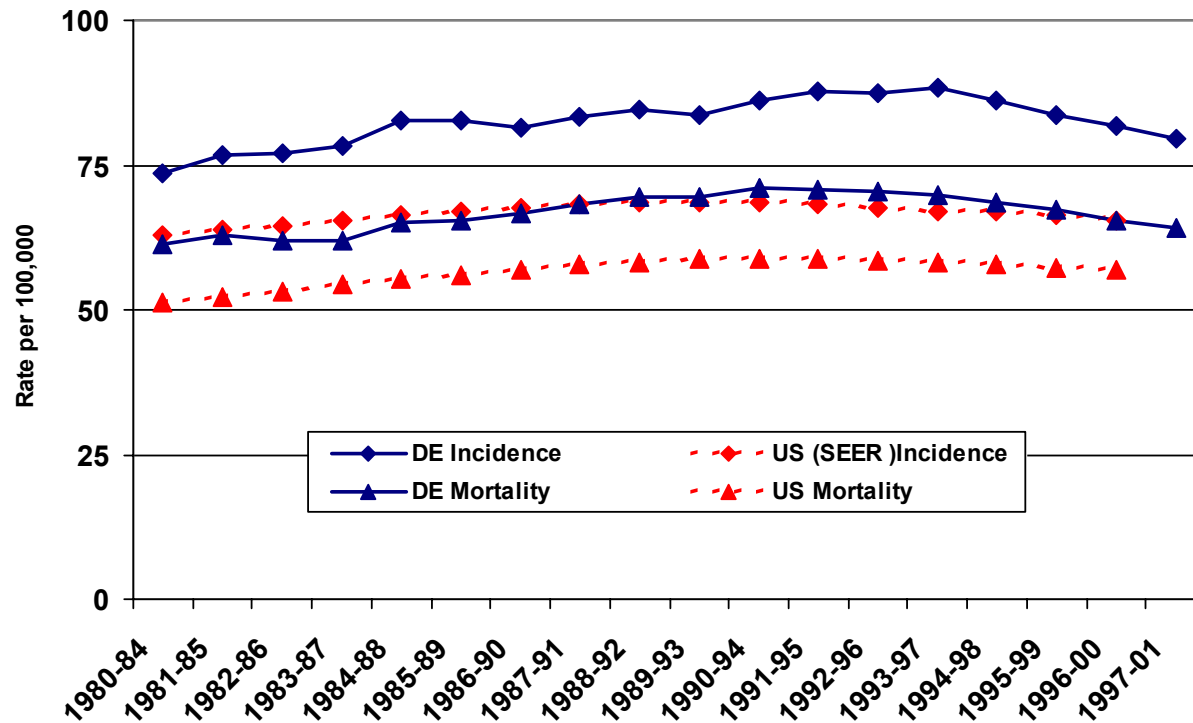
Cancer Incidence and Mortality Average Annual Age-adjusted Rates per 100,000, Delaware and U.S.



National Average is represented by SEER (Surveillance, Epidemiology and End Results) Registries, a program of the National Cancer Institute

# Lung Cancer

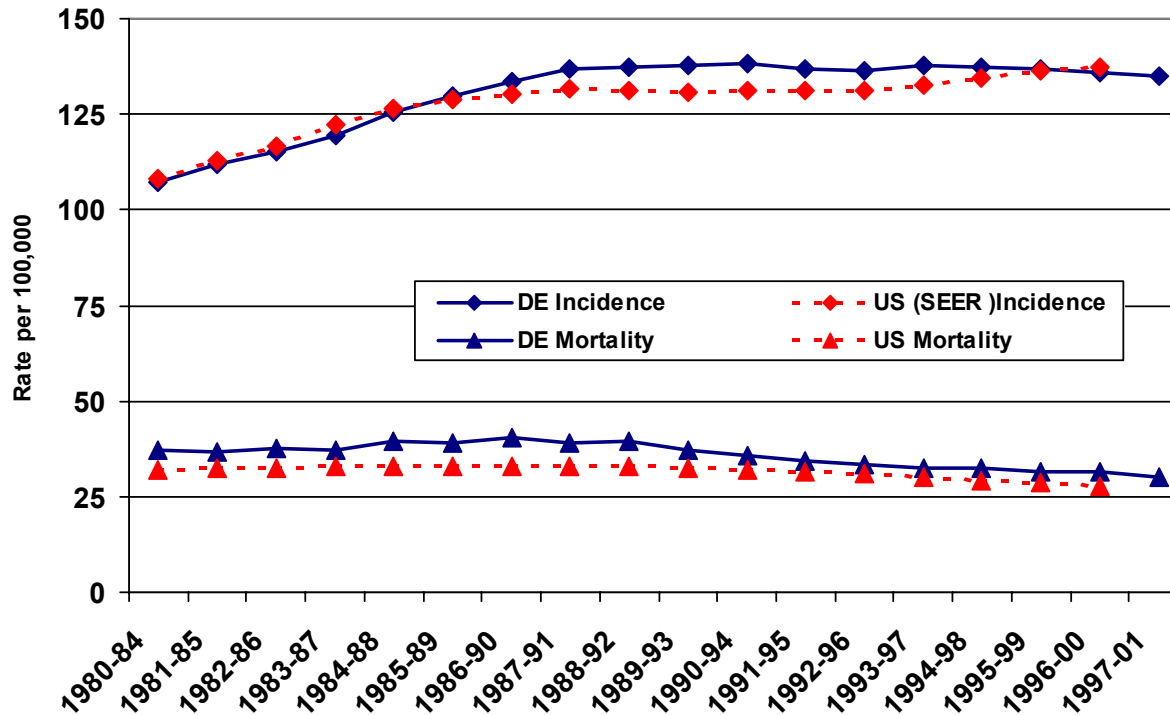
Lung Cancer Incidence and Mortality Age-adjusted rates per 100,000, Delaware and U.S.



National Average is represented by SEER (Surveillance, Epidemiology and End Results) Registries, a program of the National Cancer Institute

# Female Breast Cancer

Female Breast Cancer Incidence and Mortality Age-adjusted rates per 100,000, Delaware and U.S.

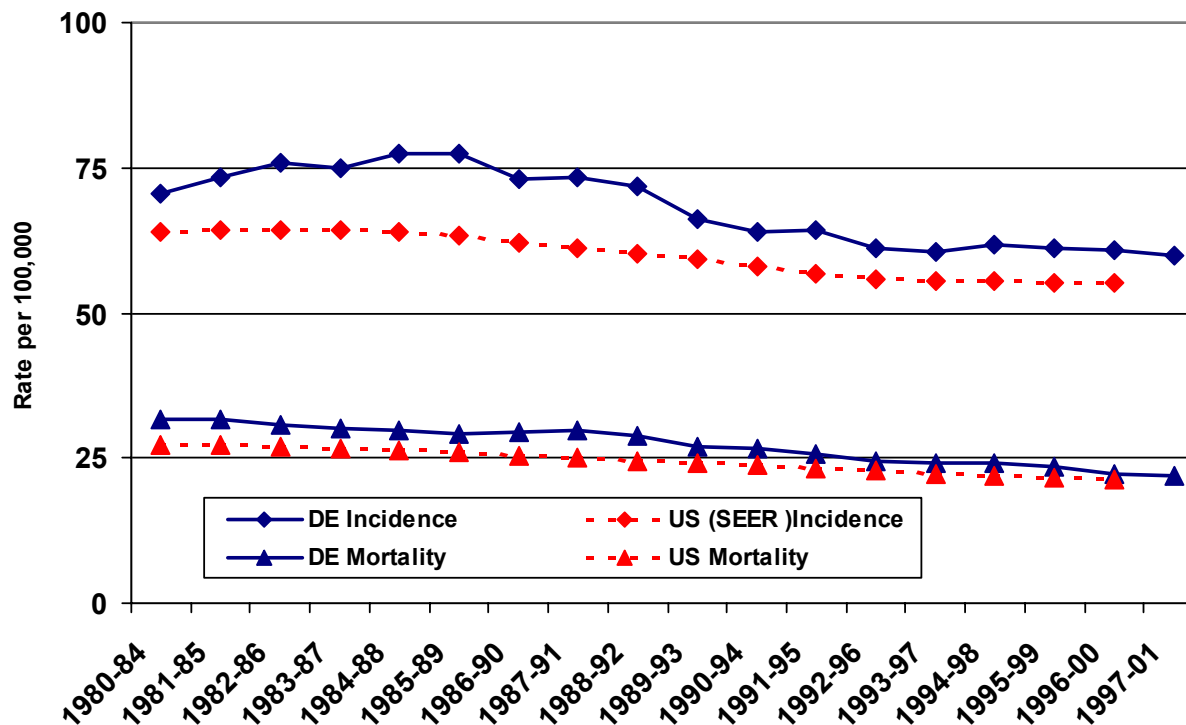


National Average is represented by SEER (Surveillance, Epidemiology and End Results) Registries, a program of the National Cancer Institute



# Colorectal Cancer

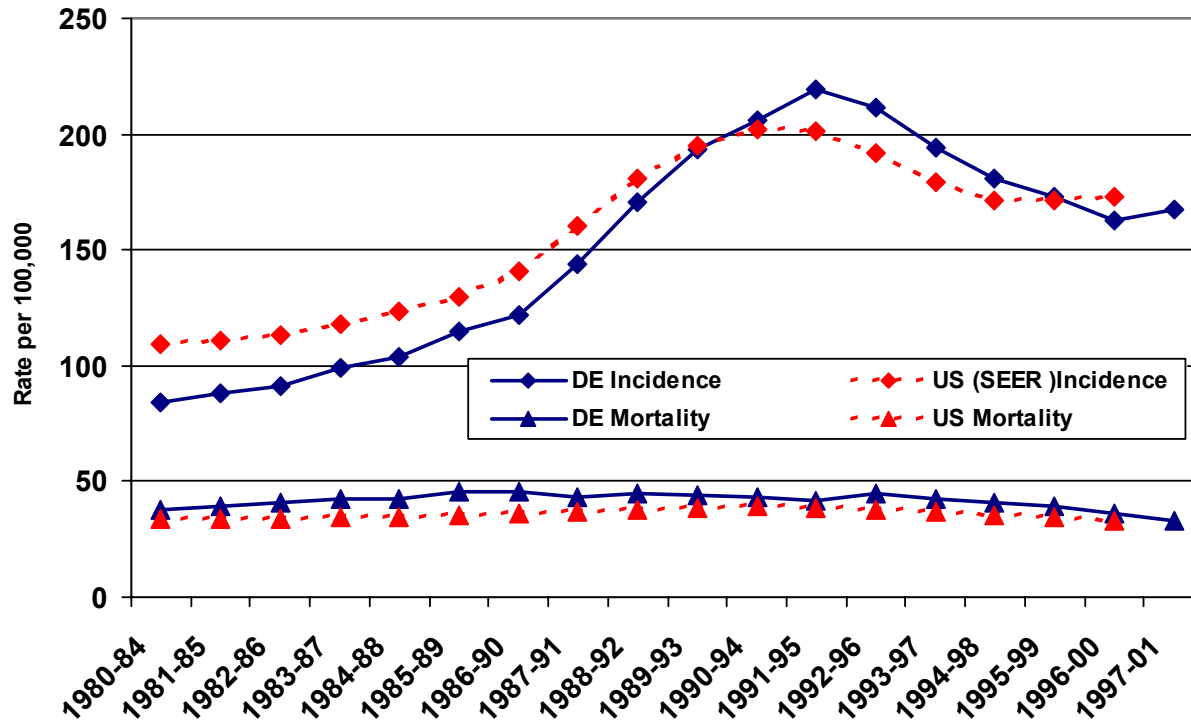
Colorectal Cancer Incidence and Mortality Age-adjusted rates per 100,000, Delaware and U.S.



National Average is represented by SEER (Surveillance, Epidemiology and End Results) Registries, a program of the National Cancer Institute

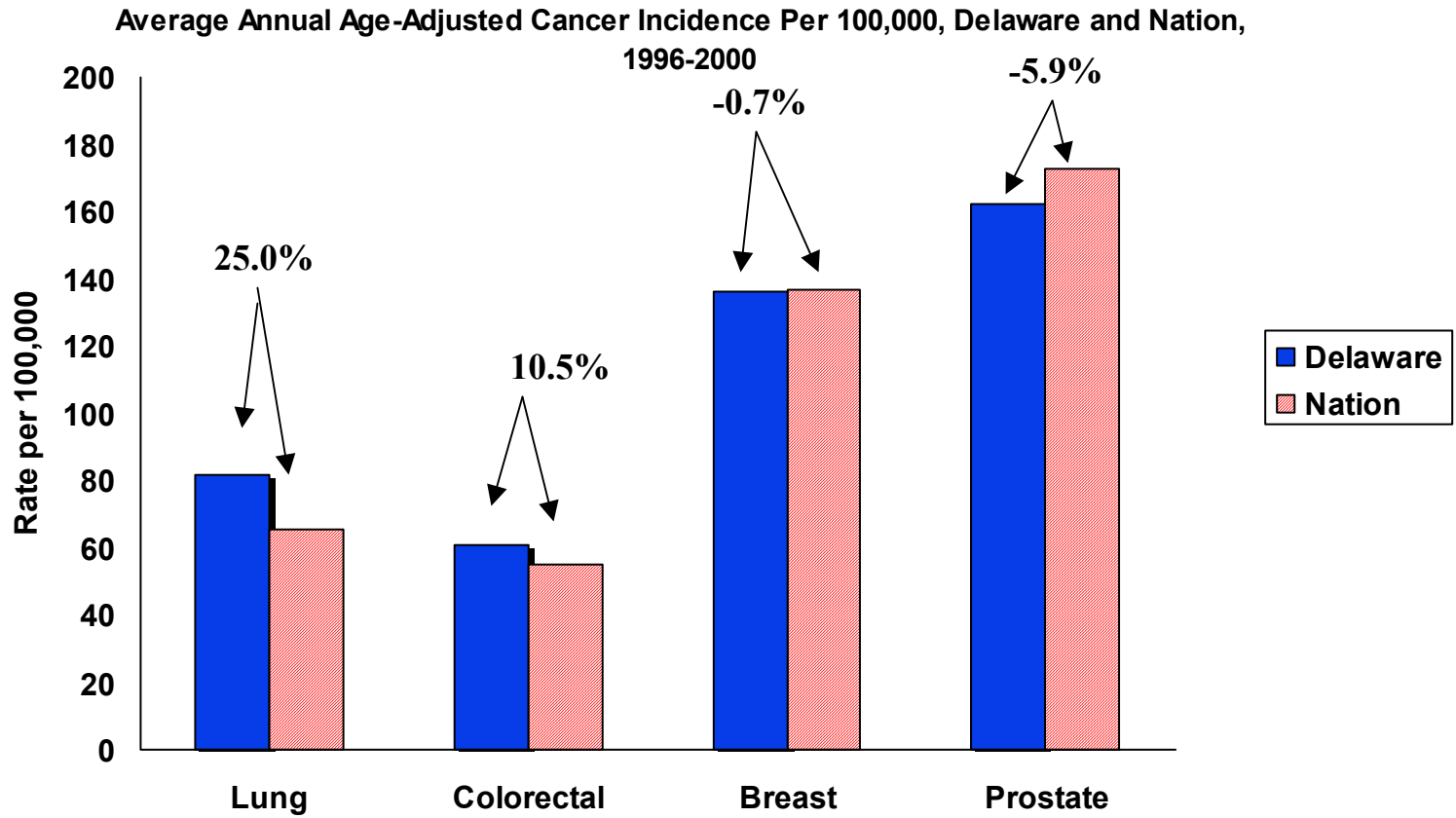
# Prostate Cancer

Prostate Cancer Incidence and Mortality Age-adjusted rates per 100,000, Delaware and U.S.



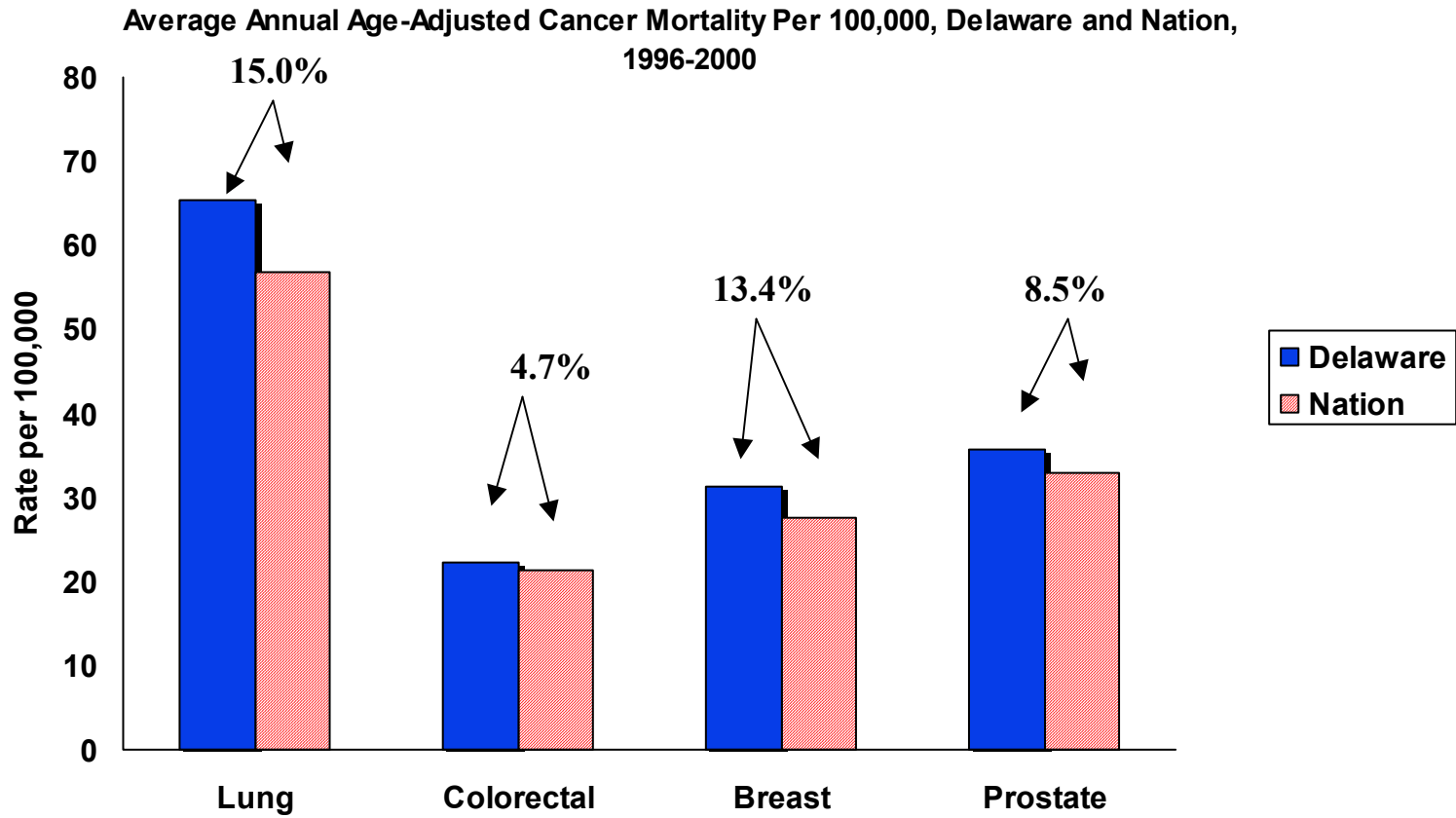
National Average is represented by SEER (Surveillance, Epidemiology and End Results) Registries, a program of the National Cancer Institute

# Summary: Delaware Cancer Incidence Rate Compared to U.S. Estimate



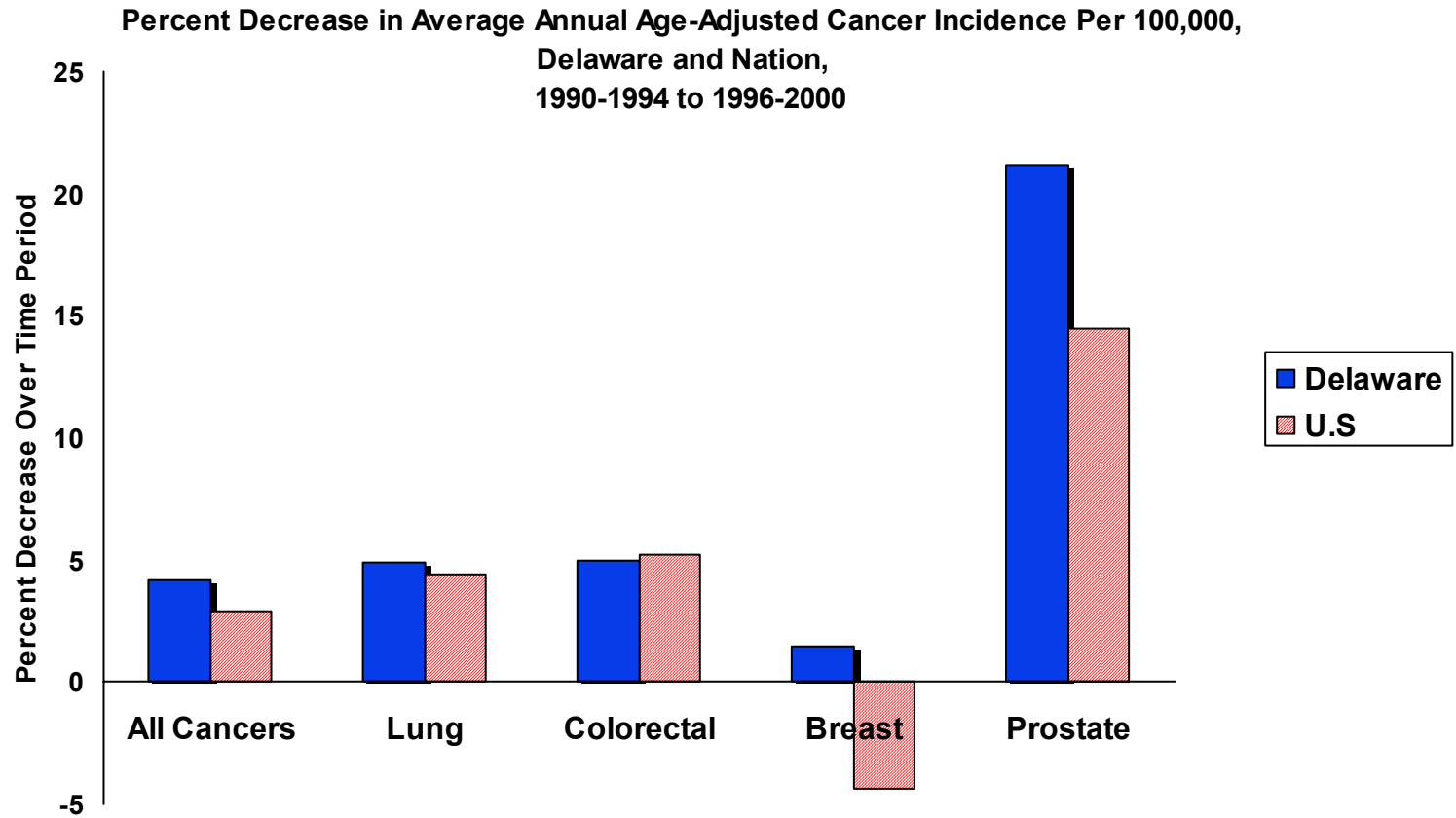
National Average is represented by SEER (Surveillance, Epidemiology and End Results) Registries, a program of the National Cancer Institute

# Summary: Delaware Cancer Mortality Rate Compared to U.S.



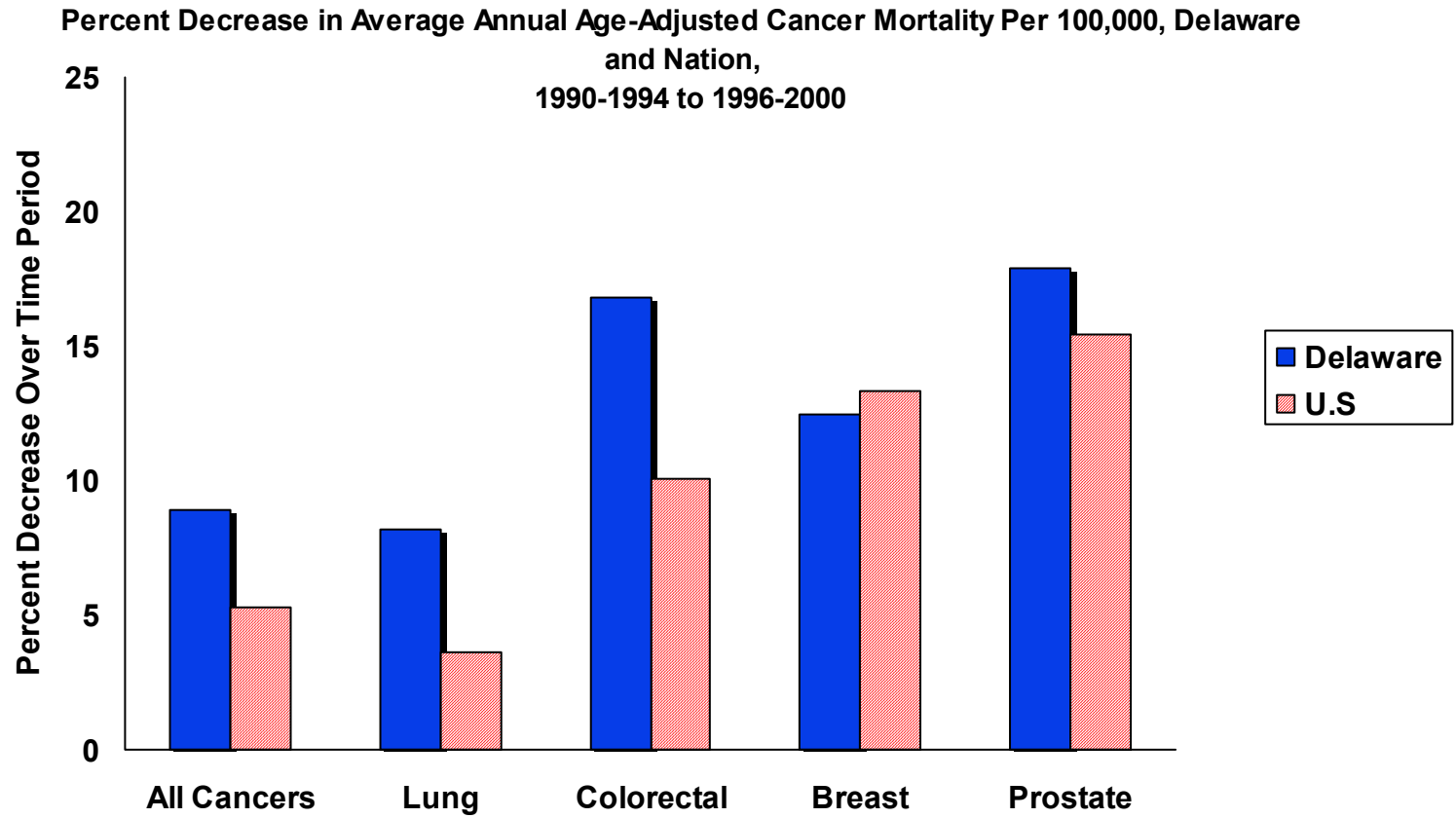
National Average is represented by SEER (Surveillance, Epidemiology and End Results) Registries, a program of the National Cancer Institute

# Summary: Delaware Cancer Incidence Rate Trend Compared to U.S.



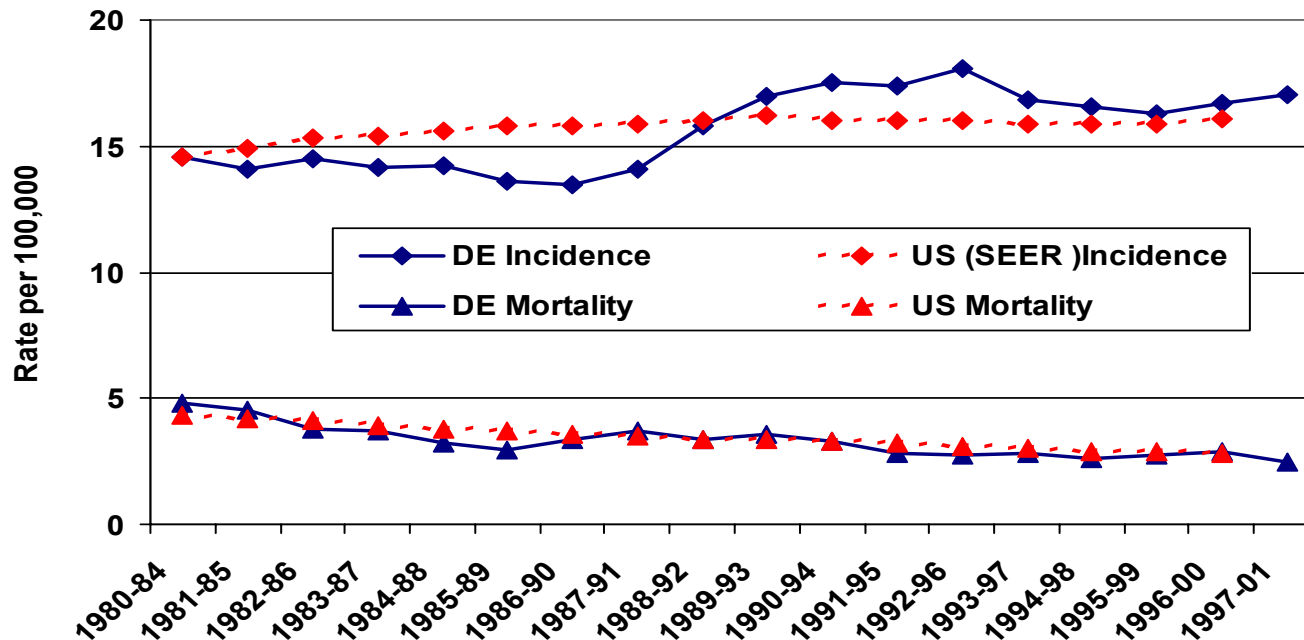
National Average is represented by SEER (Surveillance, Epidemiology and End Results) Registries, a program of the National Cancer Institute

# Summary: Delaware Cancer Mortality Rate Trend Compared to U.S.



# Childhood (0-19 Years) Cancer, Delaware and U.S.

**Cancer Incidence and Mortality Average Annual Age-adjusted Rates per 100,000, 0-19 Years at Diagnosis, Delaware and U.S.**



National Average is represented by SEER (Surveillance, Epidemiology and End Results) Registries, a program of the National Cancer Institute

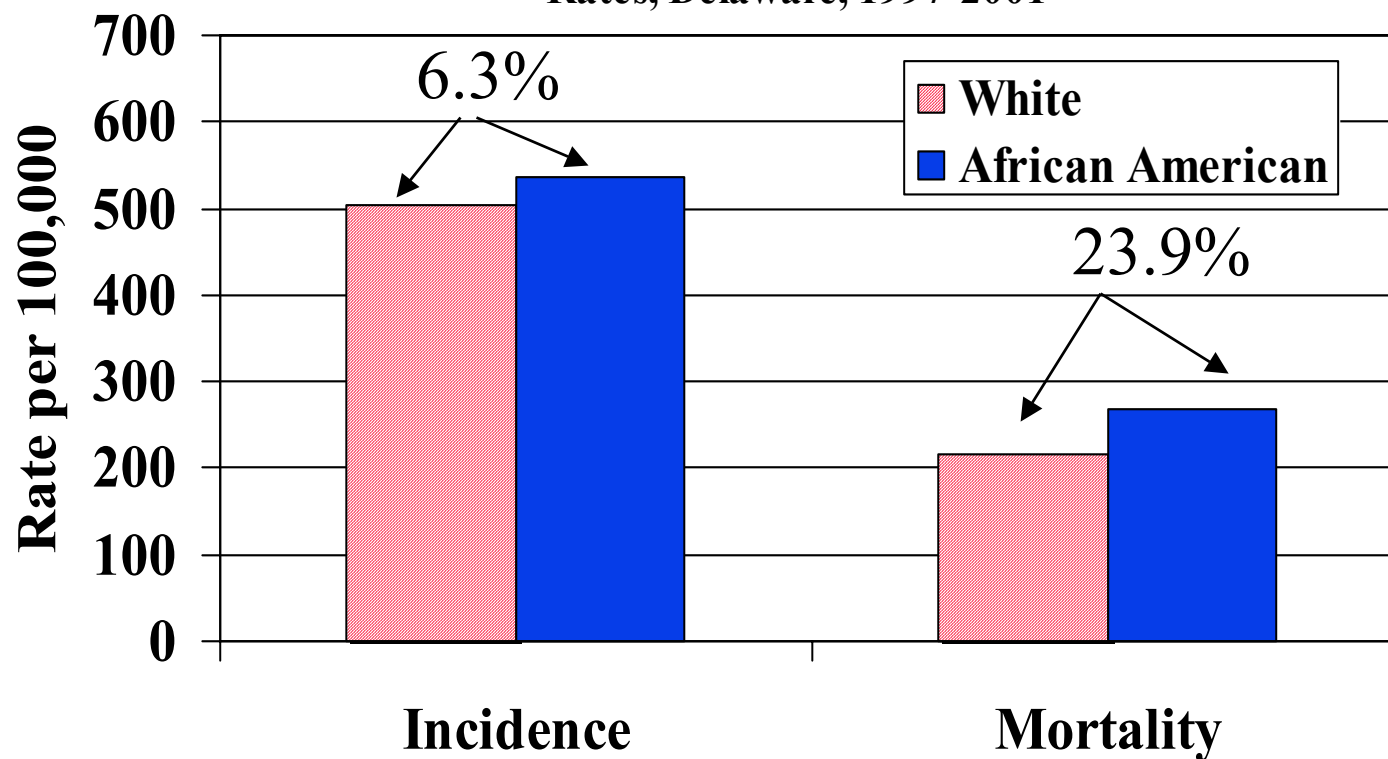
- 
- ◆ The Report
  - ◆ Natural History of Cancer
  - ◆ Big Picture
  - ◆ Delaware Trends
  - ◆ Delaware Compared to U.S.
  - ◆ **Racial Disparities**
  - ◆ Stage of Diagnosis





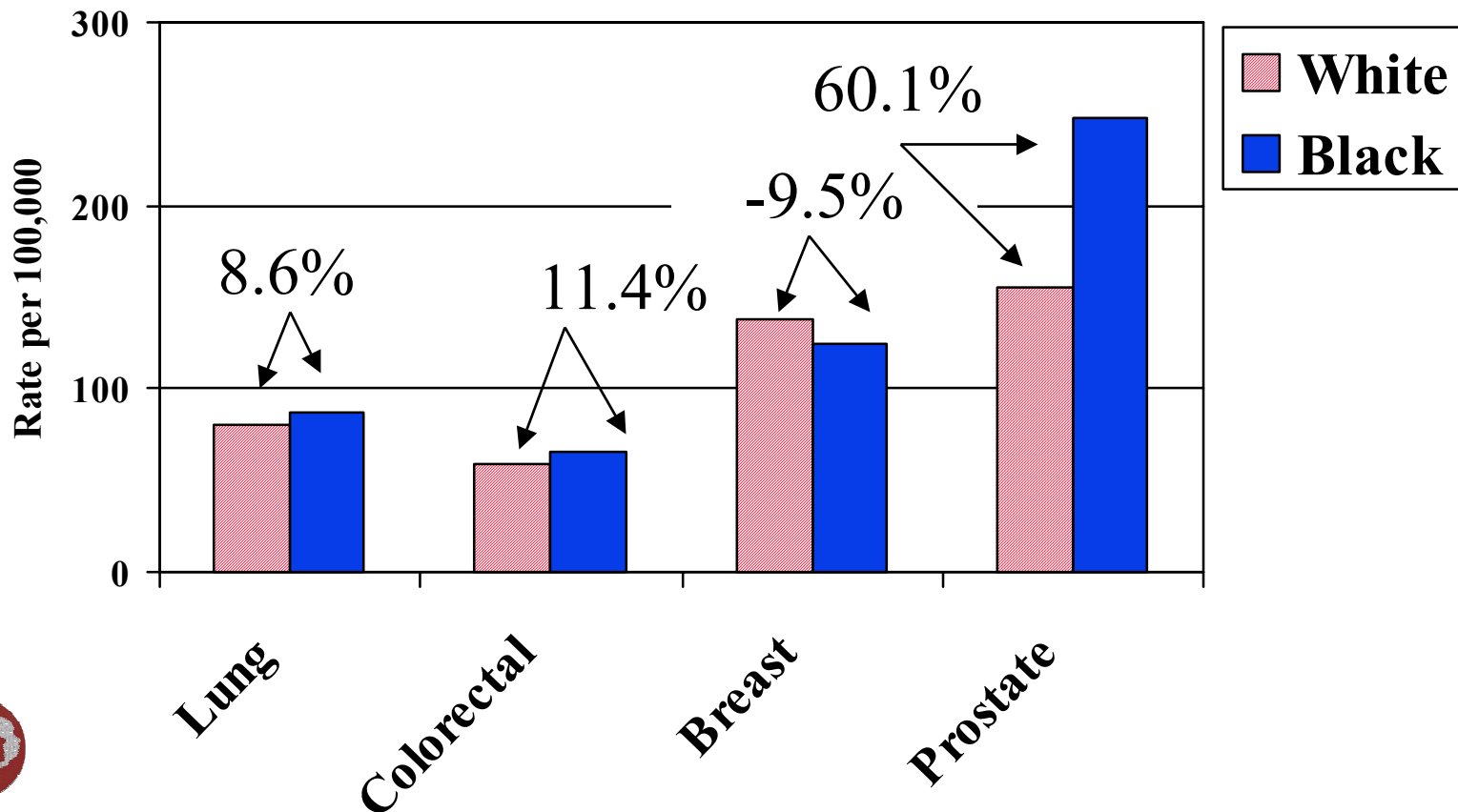
# All Cancers by Race

Five-Year Average Age-adjusted Cancer Incidence and Mortality Rates, Delaware, 1997-2001



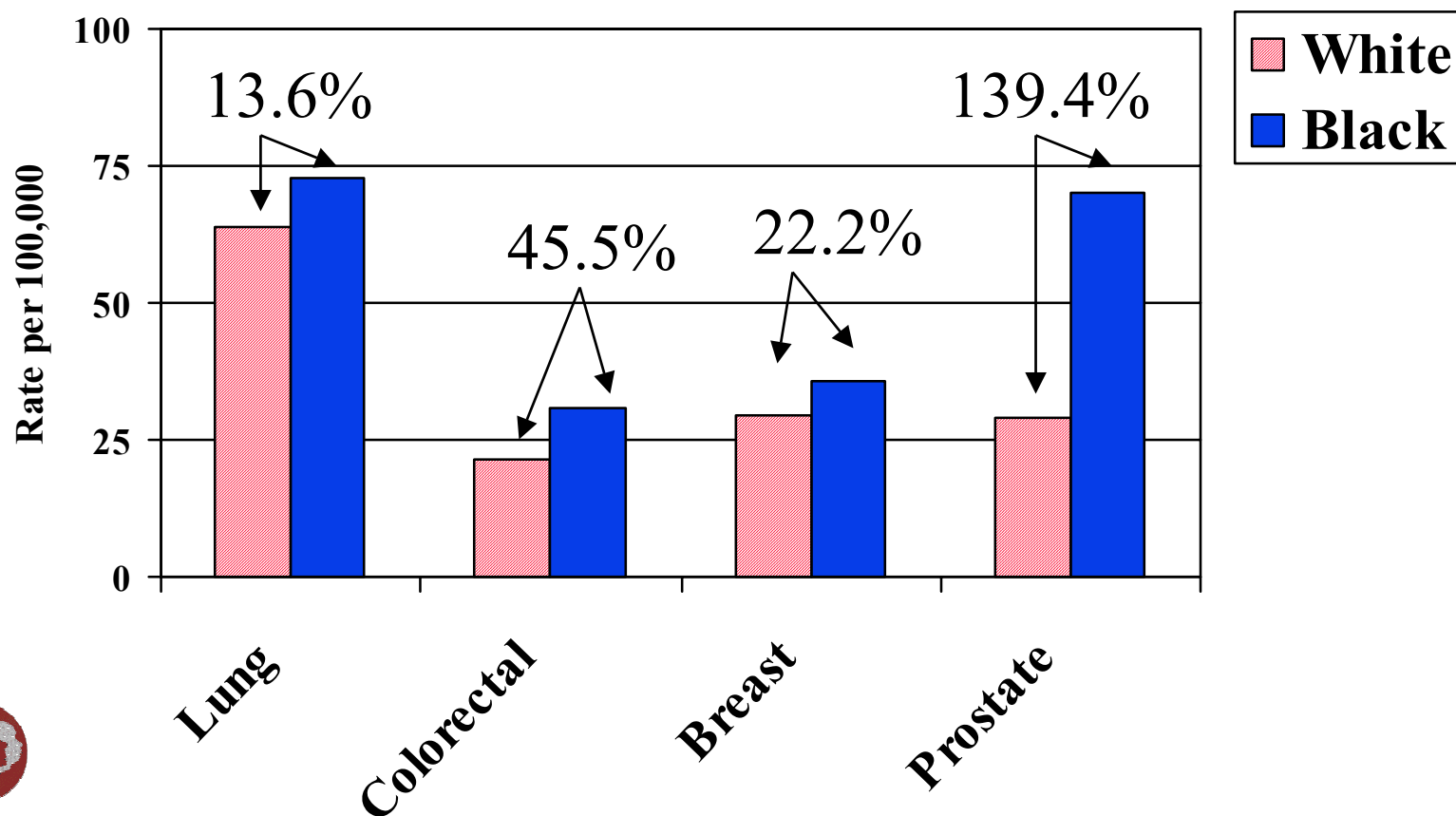
# Racial Disparity: Incidence

Average Annual Age-Adjusted Incidence Rate per 100,000 by Race, Delaware 1997-2001



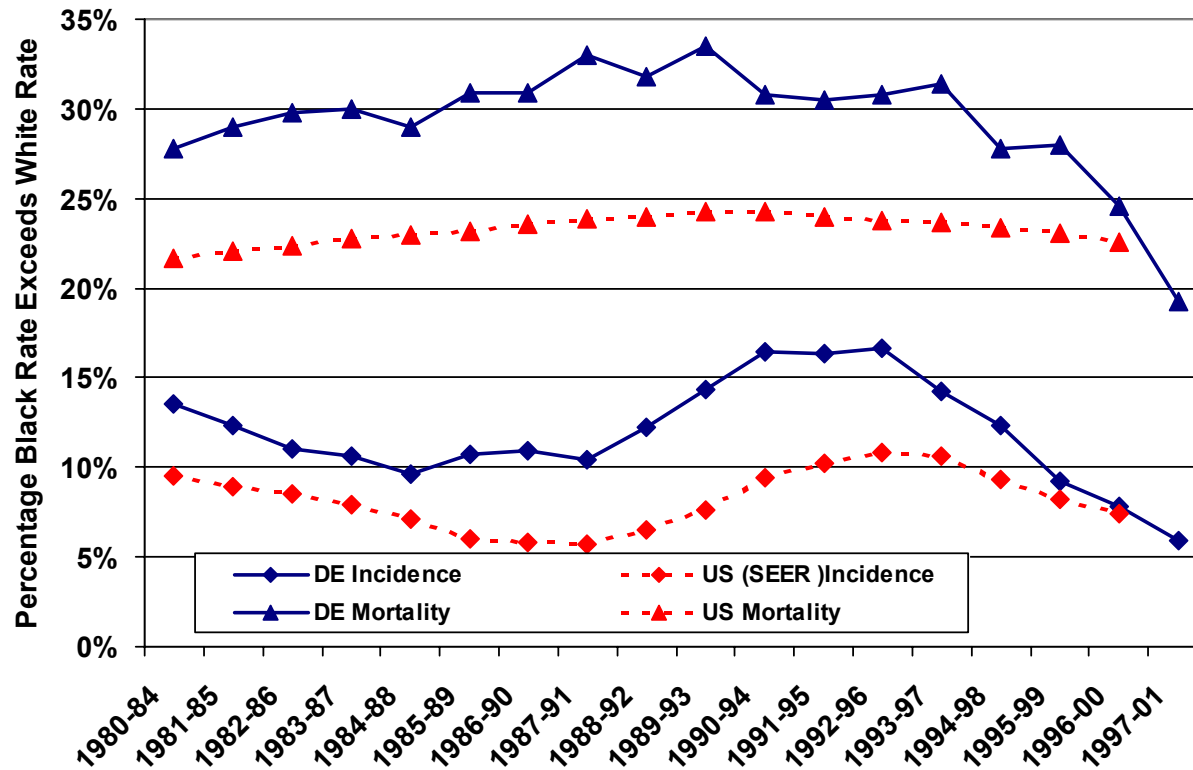
# Racial Disparity: Mortality

Average Annual Age-Adjusted Mortality Rate per 100,000 by Race, Delaware 1997-2001



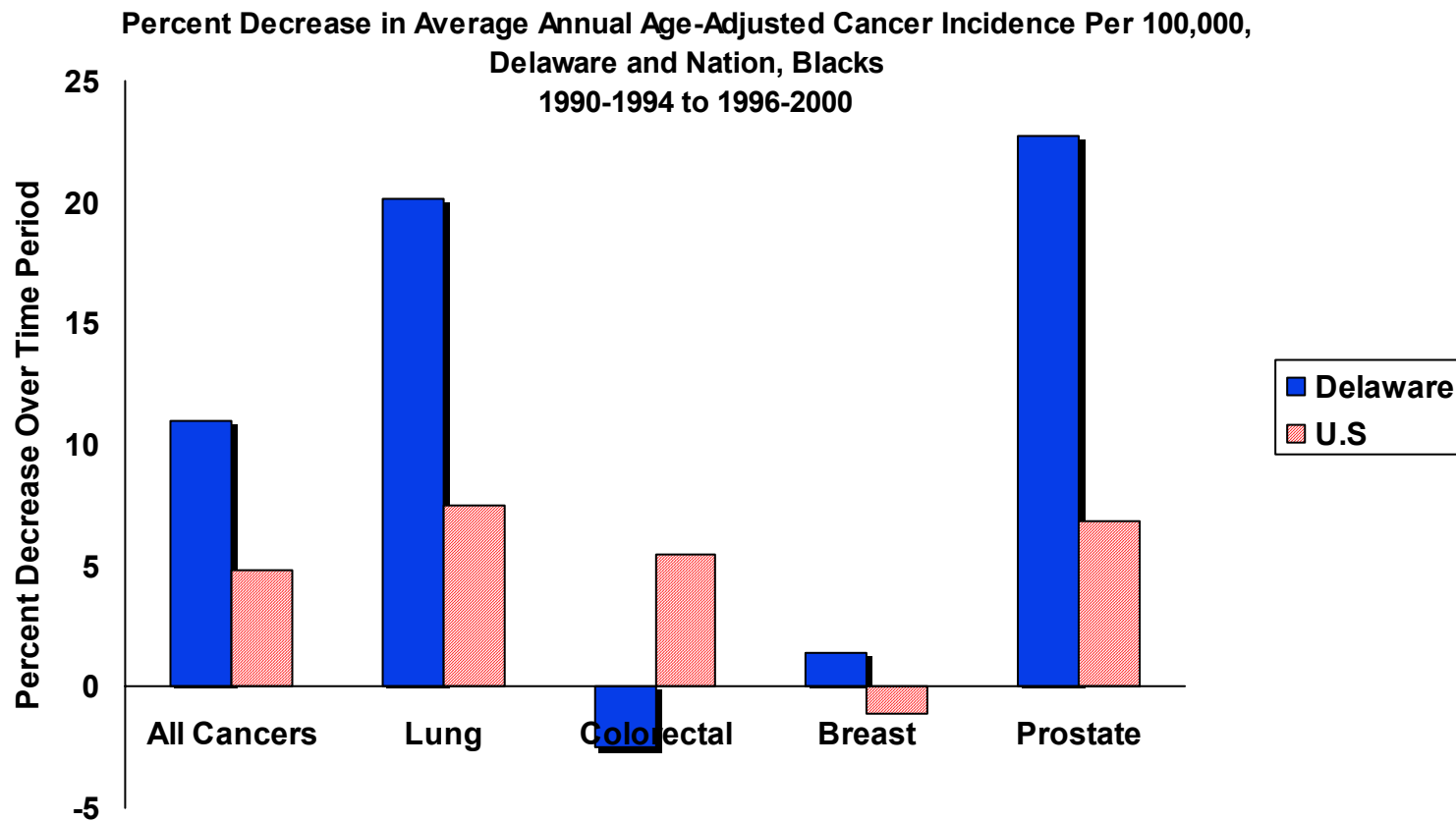
# Racial Disparity Trend

Percentage that Black Cancer Rates Exceed White Rates Based on Age-adjusted rates per 100,000, Delaware and U.S.



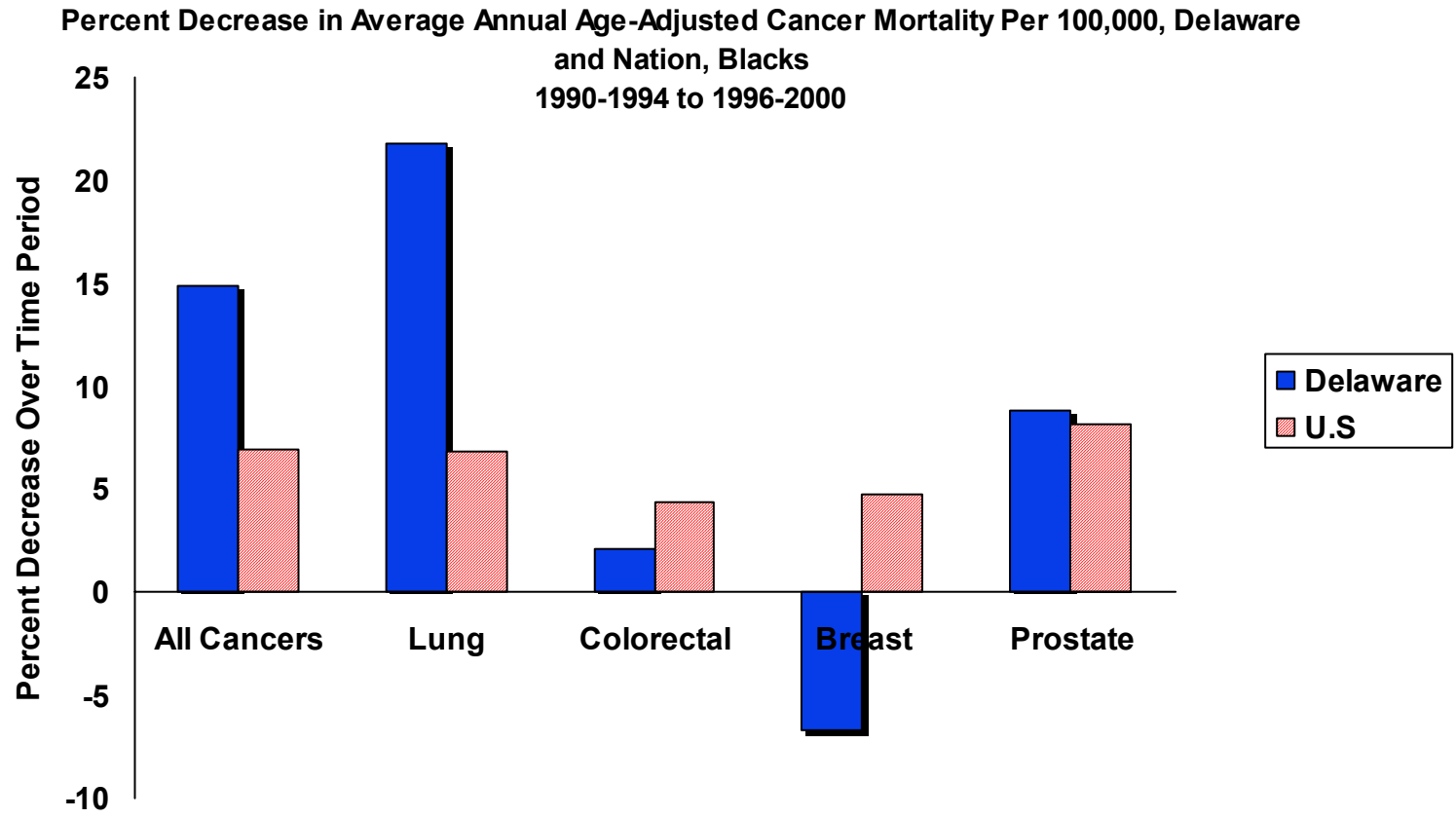
National Average is represented by SEER (Surveillance, Epidemiology and End Results) Registries, a program of the National Cancer Institute

# Summary: Delaware Cancer Incidence Rate Trend Compared to U.S., Blacks



National Average is represented by SEER (Surveillance, Epidemiology and End Results) Registries, a program of the National Cancer Institute

# Summary: Delaware Cancer Mortality Rate Trend Compared to U.S., Blacks



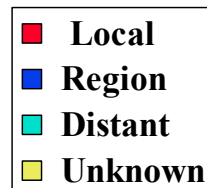
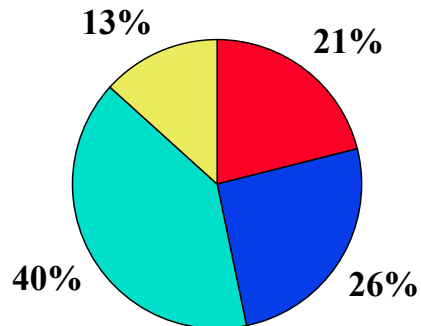
- 
- ◆ The Report
  - ◆ Natural History of Cancer
  - ◆ Big Picture
  - ◆ Delaware Trends
  - ◆ Delaware Compared to U.S.
  - ◆ Racial Disparities
  - ◆ Stage of Diagnosis



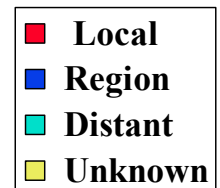
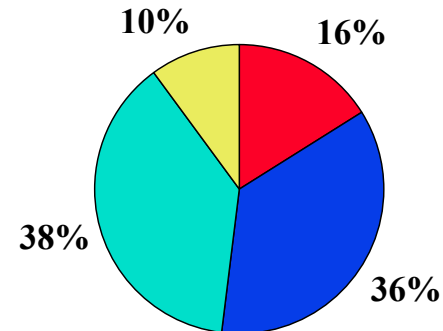
# Stage at Diagnosis

## Lung Cancer, 1992-1999

Delaware Staging



United States Staging

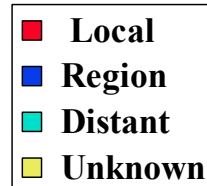
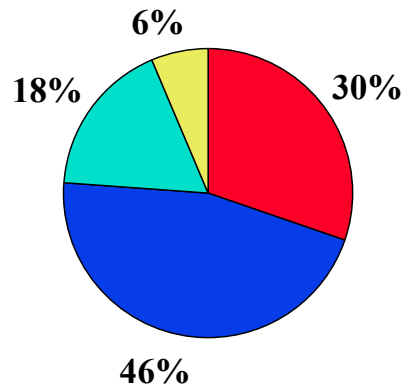




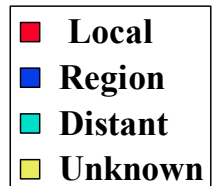
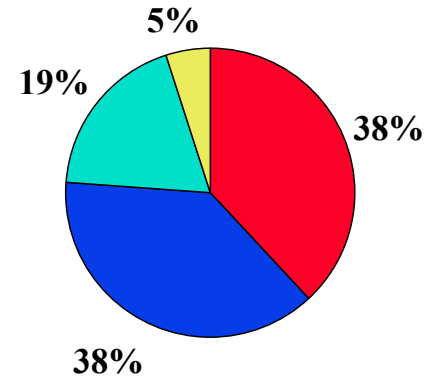
# Stage at Diagnosis

## ColoRectal Cancer, 1992-1999

Delaware Staging



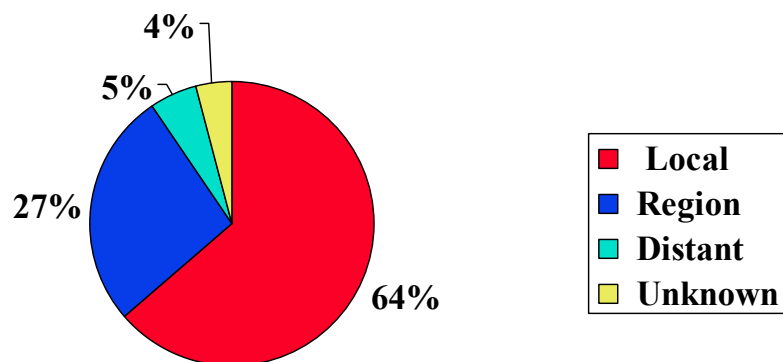
United States Staging



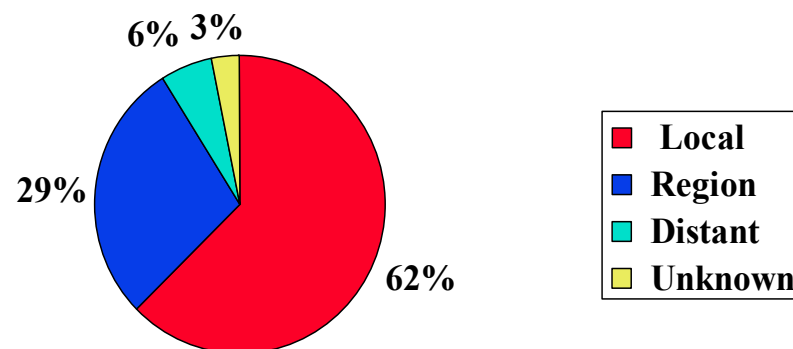
# Stage at Diagnosis

## Breast, 1992-1999

Delaware Staging



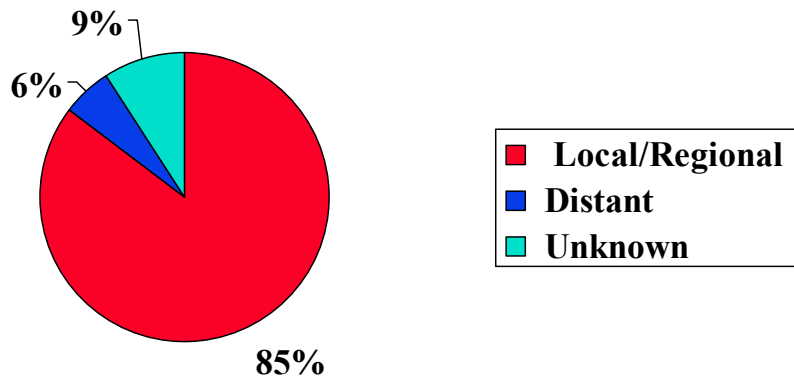
United States Staging



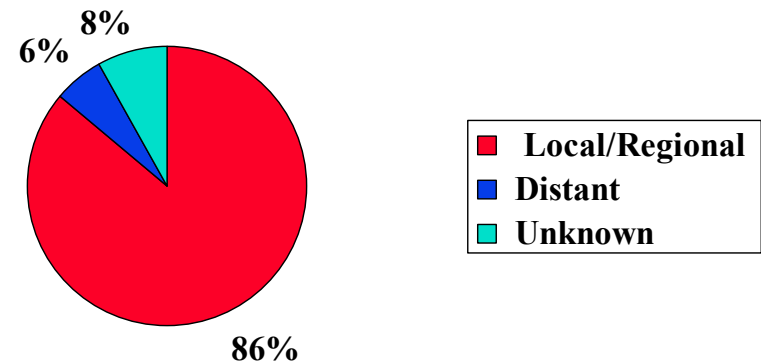
# Stage at Diagnosis

## Prostate Cancer, 1992-1999

Delaware Staging

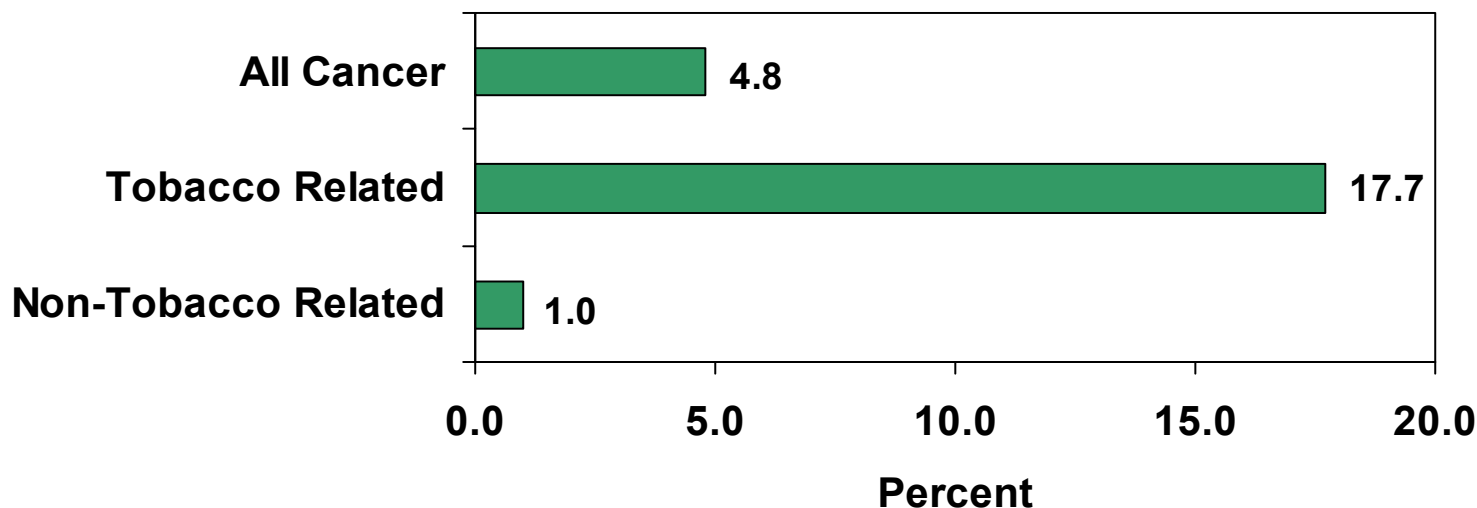


United States Staging



# Importance of Tobacco to “Excess” Incidence

## Percent Increase in Delaware Cancer Age-adjusted Incidence vs. U.S. Estimate, 1996-2000



National Average is represented by SEER (Surveillance, Epidemiology and End Results) Registries, a program of the National Cancer Institute Tobacco related cancers: lung, bladder, larynx, esophageal, kidney, pancreas, oral

# Questions

---

