



Delaware Weekly Influenza Surveillance Report

Week 06 (February 6 – February 12, 2011)
Delaware Division of Public Health

National Synopsis-2010-2011:

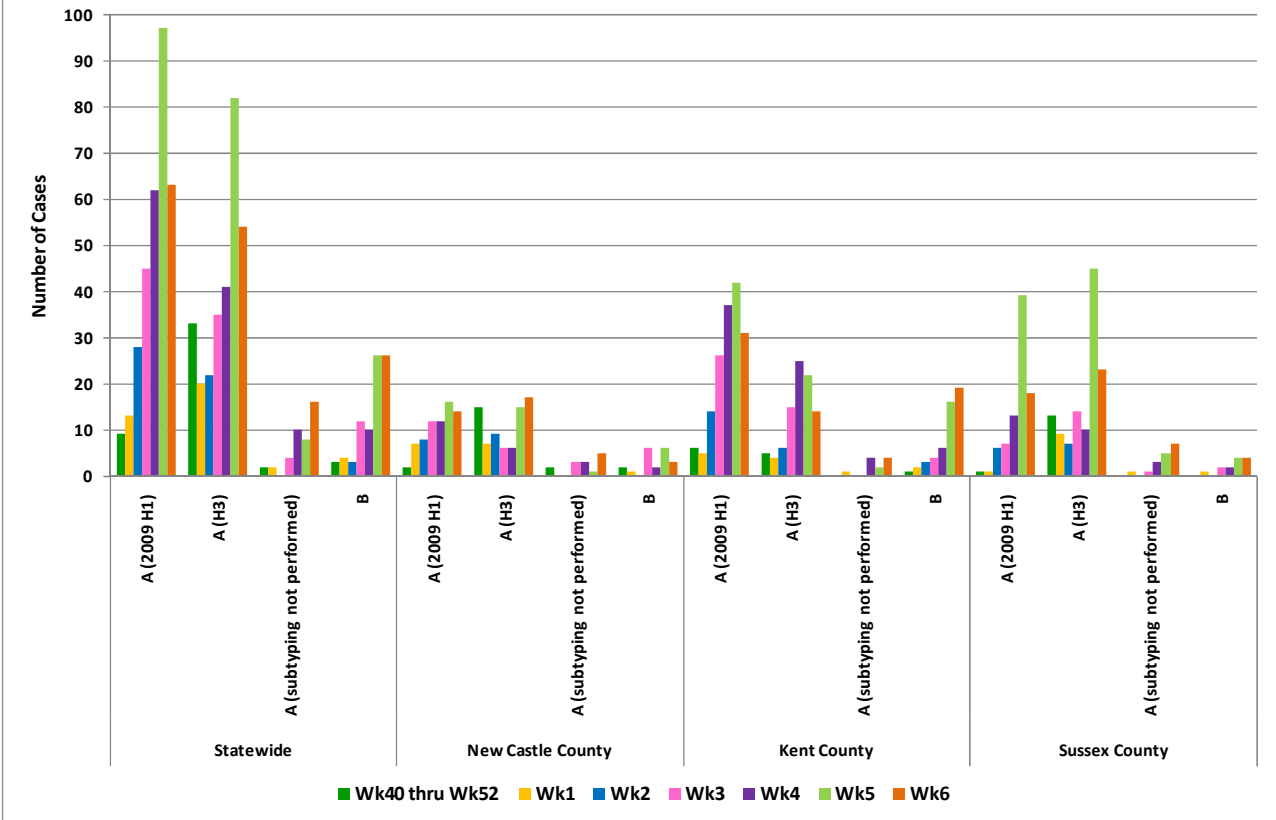
NOTE: National data is updated Friday of each week. Please visit <http://www.cdc.gov/flu/weekly/> for the most current information.

Delaware Influenza Surveillance-2010-2011:

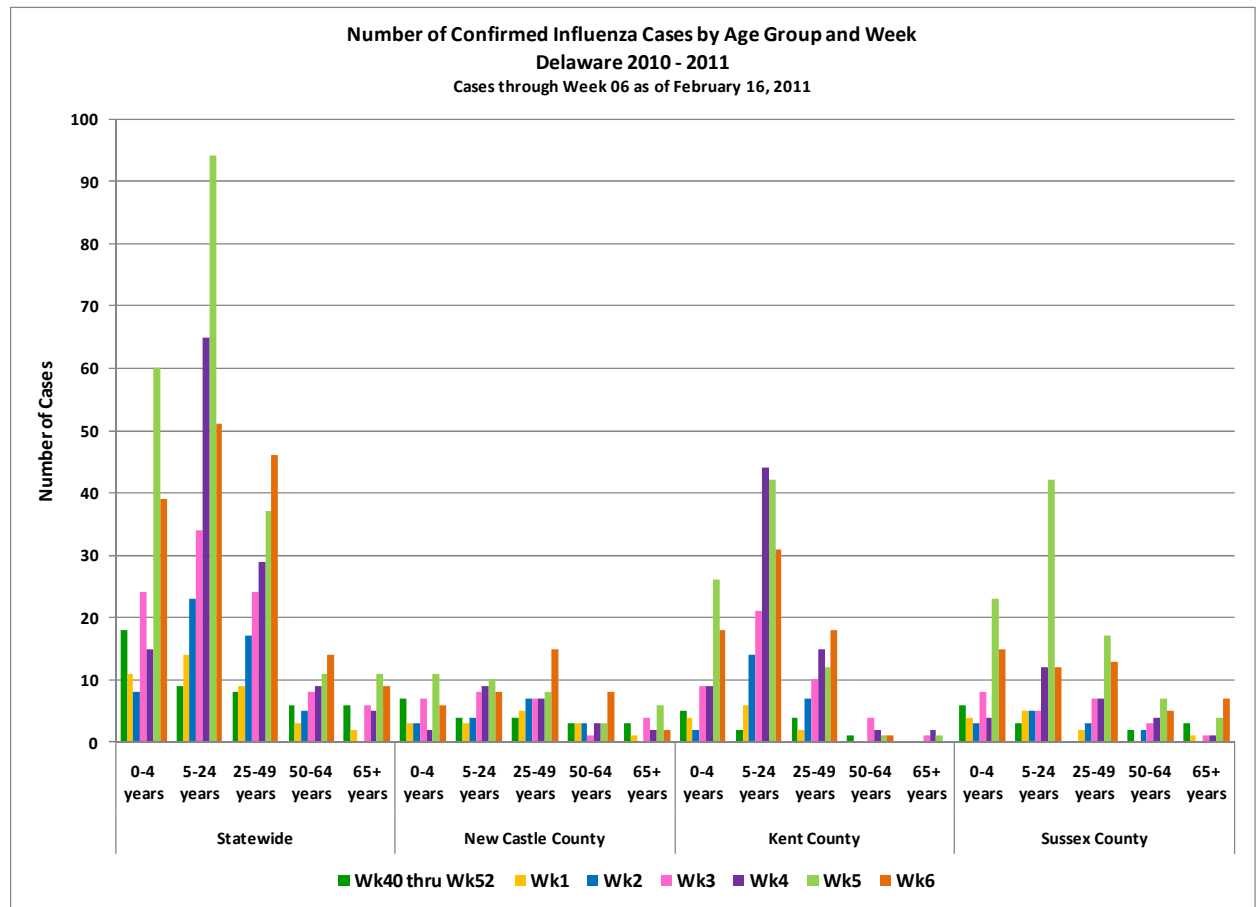
†Influenza Positive and Confirmed Cases Reported through Week 06 (Week ending February 12, 2011)

Confirmed Flu Cases by Subtype		2010 Wk40 thru Wk52	2011						YTD	Total	Pct of Total
			Wk1	Wk2	Wk3	Wk4	Wk5	Wk6			
Statewide	A (2009 H1)	9	13	28	45	62	97	63	317	730	
	A (H3)	33	20	22	35	41	82	54	287		
	Unknown	0			0	0	0	0	0		
	A (unable to subtype)	0			0	0	0	0	0		
	A (subtyping not performed)	2	2		4	10	8	16	42		
	B	3	4	3	12	10	26	26	84		
New Castle County	A (2009 H1)	2	7	8	12	12	16	14	71	180	24.7%
	A (H3)	15	7	9	6	6	15	17	75		
	Unknown	0					0	0	0		
	A (unable to subtype)	0					0	0	0		
	A (subtyping not performed)	2			3	3	1	5	14		
	B	2	1		6	2	6	3	20		
Kent County	A (2009 H1)	6	5	14	26	37	42	31	161	314	43.0%
	A (H3)	5	4	6	15	25	22	14	91		
	Unknown	0					0	0	0		
	A (unable to subtype)	0					0	0	0		
	A (subtyping not performed)	0	1			4	2	4	11		
	B	1	2	3	4	6	16	19	51		
Sussex County	A (2009 H1)	1	1	6	7	13	39	18	85	236	32.3%
	A (H3)	13	9	7	14	10	45	23	121		
	Unknown	0					0	0	0		
	A (unable to subtype)	0					0	0	0		
	A (subtyping not performed)	0	1		1	3	5	7	17		
	B	0	1		2	2	4	4	13		

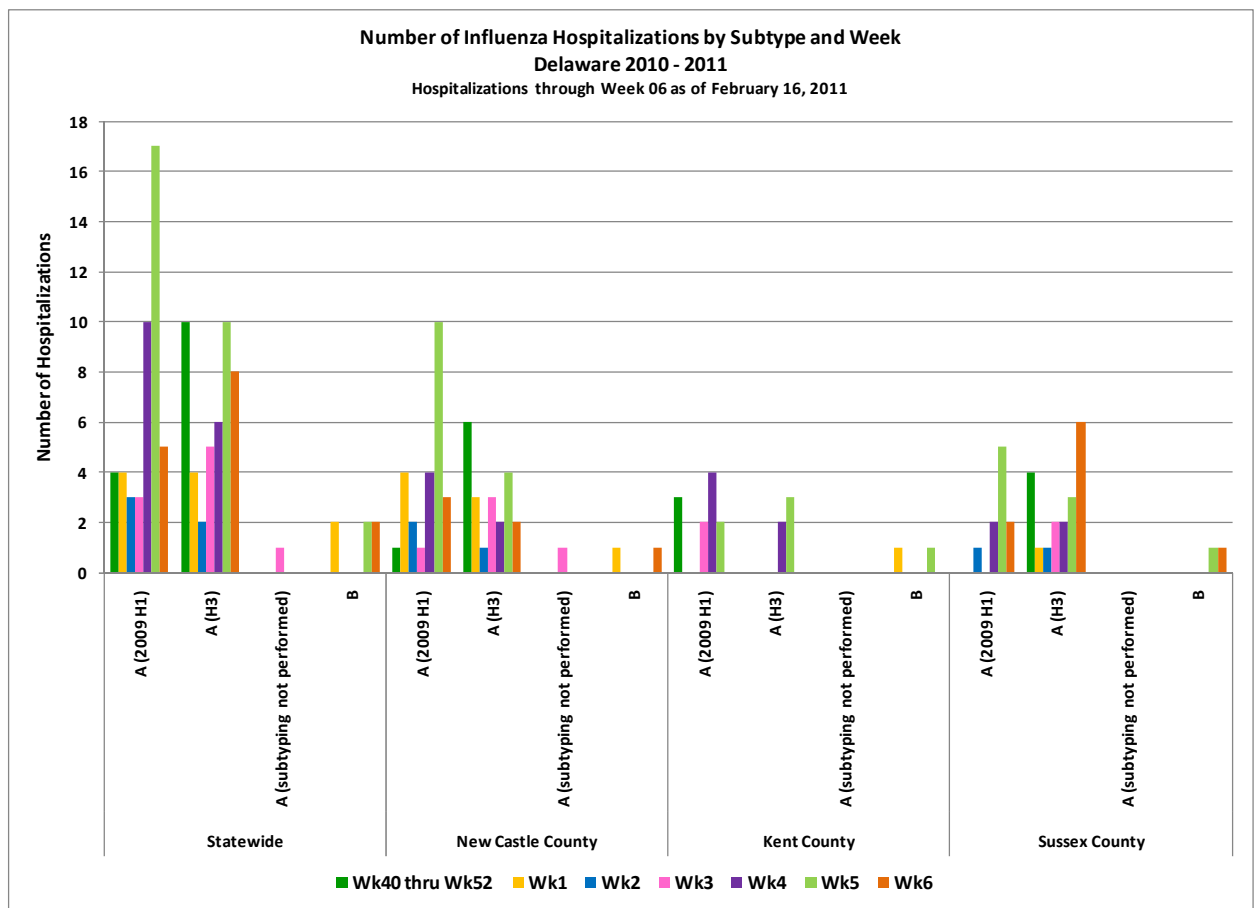
Number of Confirmed Influenza Cases by Subtype and Week
Delaware 2010 - 2011
 Cases through Week 06 as of February 16, 2011



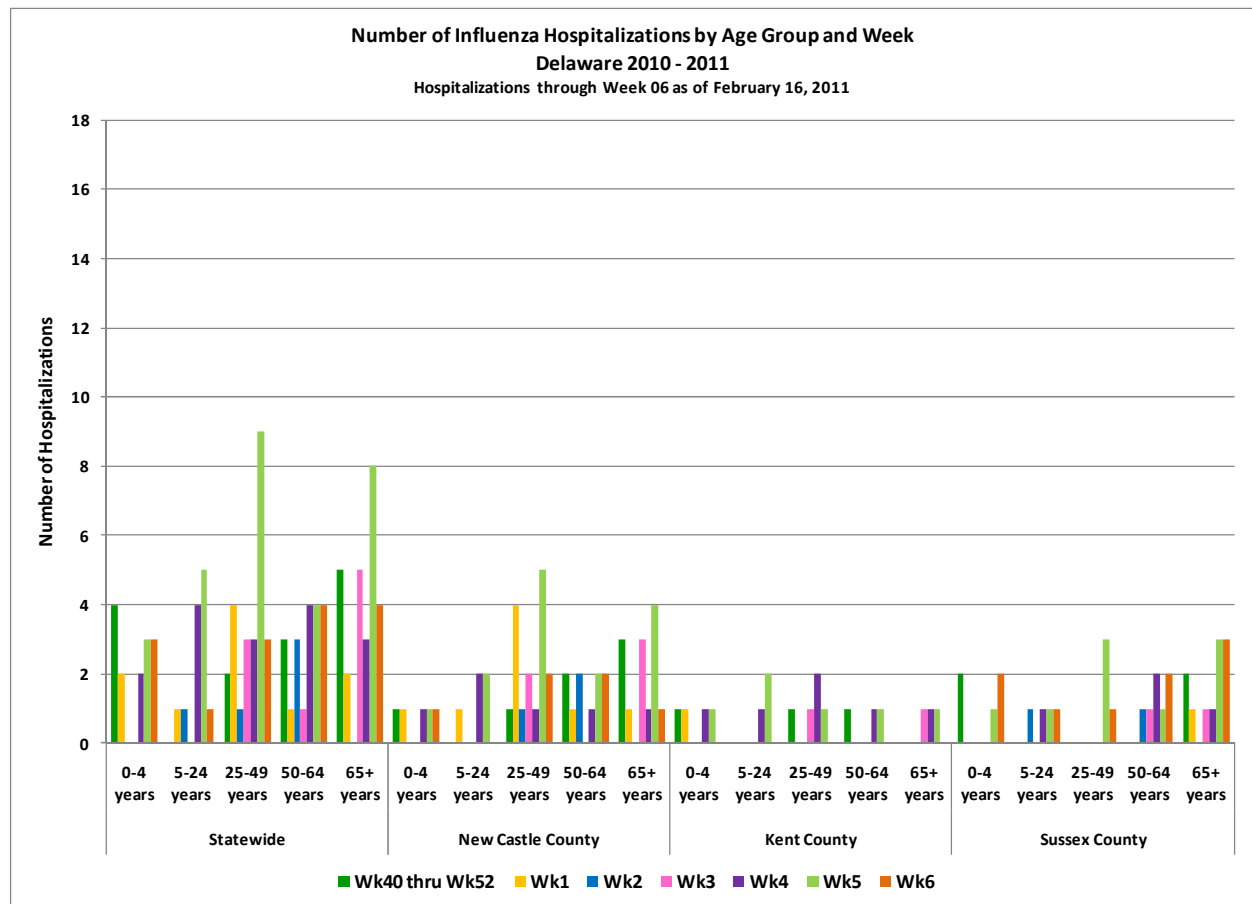
Confirmed Flu Cases by Age Group		2010	2011								
		Wk40 thru Wk52	Wk1	Wk2	Wk3	Wk4	Wk5	Wk6	YTD	Total	Pct of Total
Statewide	0-4 years	18	11	8	24	15	60	39	175	730	
	5-24 years	9	14	23	34	65	94	51	290		
	25-49 years	8	9	17	24	29	37	46	170		
	50-64 years	6	3	5	8	9	11	14	56		
	65+ years	6	2		6	5	11	9	39		
New Castle County	0-4 years	7	3	3	7	2	11	6	39	180	24.7%
	5-24 years	4	3	4	8	9	10	8	46		
	25-49 years	4	5	7	7	7	8	15	53		
	50-64 years	3	3	3	1	3	3	8	24		
	65+ years	3	1		4	2	6	2	18		
Kent County	0-4 years	5	4	2	9	9	26	18	73	314	43.0%
	5-24 years	2	6	14	21	44	42	31	160		
	25-49 years	4	2	7	10	15	12	18	68		
	50-64 years	1			4	2	1	1	9		
	65+ years	0			1	2	1	0	4		
Sussex County	0-4 years	6	4	3	8	4	23	15	63	236	32.3%
	5-24 years	3	5	5	5	12	42	12	84		
	25-49 years	0	2	3	7	7	17	13	49		
	50-64 years	2		2	3	4	7	5	23		
	65+ years	3	1		1	1	4	7	17		



Flu Hospitalizations by Subtype		2010 Wk40 thru Wk52	2011						YTD	Total	Pct of Total
			Wk1	Wk2	Wk3	Wk4	Wk5	Wk6			
Statewide	A (2009 H1)	4	4	3	3	10	17	5	46	98	
	A (H3)	10	4	2	5	6	10	8	45		
	A (H1)	0					0	0	0		
	A (subtyping not performed)	0			1		0	0	1		
	B	0	2				2	2	6		
New Castle County	A (2009 H1)	1	4	2	1	4	10	3	25	49	50.0%
	A (H3)	6	3	1	3	2	4	2	21		
	A (H1)	0					0	0	0		
	A (subtyping not performed)	0			1		0	0	1		
	B	0	1				0	1	2		
Kent County	A (2009 H1)	3			2	4	2	0	11	18	18.4%
	A (H3)	0				2	3	0	5		
	A (H1)	0					0	0	0		
	A (subtyping not performed)	0					0	0	0		
	B	0	1				1	0	2		
Sussex County	A (2009 H1)	0		1		2	5	2	10	31	31.6%
	A (H3)	4	1	1	2	2	3	6	19		
	A (H1)	0					0	0	0		
	A (subtyping not performed)	0					0	0	0		
	B	0					1	1	2		



Flu Hospitalizations by Age Group		2010	2011								
		Wk40 thru Wk52	Wk1	Wk2	Wk3	Wk4	Wk5	Wk6	YTD	Total	Pct of Total
Statewide	0-4 years	4	2			2	3	3	14	98	
	5-24 years	0	1	1		4	5	1	12		
	25-49 years	2	4	1	3	3	9	3	25		
	50-64 years	3	1	3	1	4	4	4	20		
	65+ years	5	2		5	3	8	4	27		
New Castle County	0-4 years	1	1			1	1	1	5	49	50.0%
	5-24 years	0	1			2	2	0	5		
	25-49 years	1	4	1	2	1	5	2	16		
	50-64 years	2	1	2		1	2	2	10		
	65+ years	3	1		3	1	4	1	13		
Kent County	0-4 years	1	1			1	1	0	4	18	18.4%
	5-24 years	0				1	2	0	3		
	25-49 years	1			1	2	1	0	5		
	50-64 years	1				1	1	0	3		
	65+ years	0			1	1	1	0	3		
Sussex County	0-4 years	2					1	2	5	31	31.6%
	5-24 years	0		1		1	1	1	4		
	25-49 years	0					3	1	4		
	50-64 years	0		1	1	2	1	2	7		
	65+ years	2	1		1	1	3	3	11		



Total Flu-related Deaths in Delaware 2010 – 2011 Influenza Season	Wk40 thru Wk52	Wk01 thru Wk06	YTD
	0	1	1

Annual Seasonal Flu Case Totals	
2004	995
2005	541
2006	508
2007	1401
2008	738
2009-2010	2, 247
2010-2011	730

* Based on patients with positive nucleic acid and viral culture test results reported to the Division of Public Health.

† Reports are by date of specimen collection, not the date the results are obtained. As a result, prior weeks may be adjusted to reflect additional cases.

§§ Confirmed Influenza cases from all reporting sources (including State Lab)

NOTE: The data provided may not be a true reflection of the total number of people who have been infected with influenza virus in Delaware, chiefly due to the following:

- Many people ill with influenza-like symptoms do not seek medical care; and
- Many who do seek medical care are not tested for influenza.

Level of Influenza Activity in Delaware, Week 06:

Sporadic

- ➔ Isolated laboratory confirmed cases OR a laboratory confirmed outbreak in one institution but no increase in reports of ILI from the regional baseline for the season.

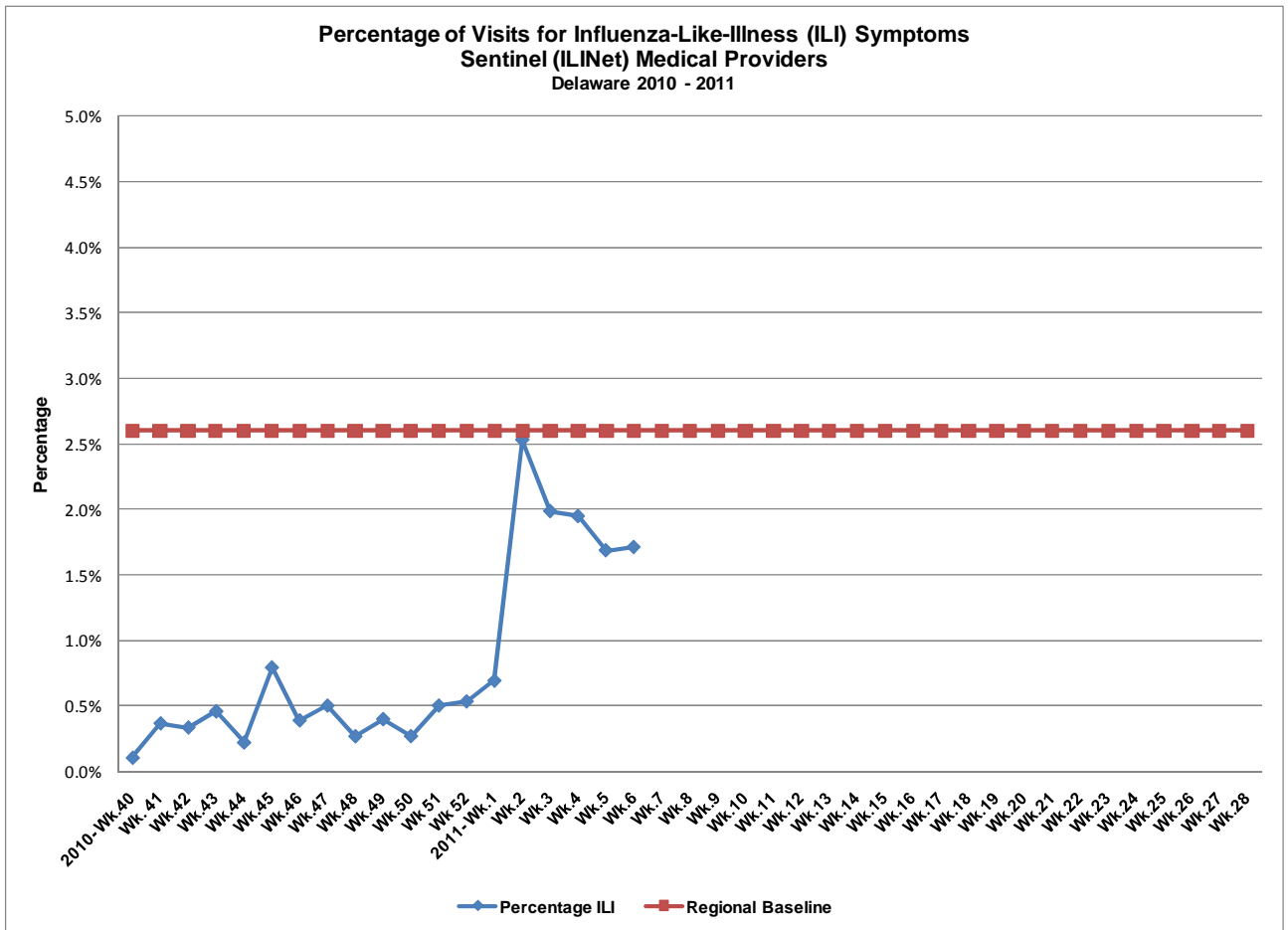
Influenza-like illness (ILI) is defined as patients presenting with fever over 100° F, cough and/or sore throat in the absence of a known cause other than influenza.

- ➔ **No Activity:** No laboratory confirmed cases of influenza and no increase in the number of reports of ILI above regional baseline for the season.
- ➔ **Sporadic:** Isolated laboratory confirmed cases OR a laboratory confirmed outbreak in one institution but no increase in reports of ILI from the regional baseline for the season.
- ➔ **Local:** Increased ILI above the regional baseline for the season in a single county; ILI activity in other counties is not increased above baseline AND recent (within the past three weeks) laboratory evidence of influenza in the county with increased ILI OR two or more institutional outbreaks (ILI or laboratory confirmed flu) in a single county AND recent (within the past three weeks) laboratory evidence of influenza in the county with the outbreaks; virus activity is no greater than sporadic in other counties.
- ➔ **Regional:** Outbreaks of influenza or increases in ILI and recent laboratory confirmed influenza in at least 2 but less than half the regions of the state. (This level of activity does not apply for small states with 4 or fewer regions.)
- ➔ **Widespread:** Increase in ILI reports above the regional baseline and/or institutional outbreaks of influenza (ILI or lab confirmed) AND recent (within the past 3 weeks) laboratory confirmed influenza in at least two of the three counties.

ILINet (Sentinel) Provider Surveillance Network:

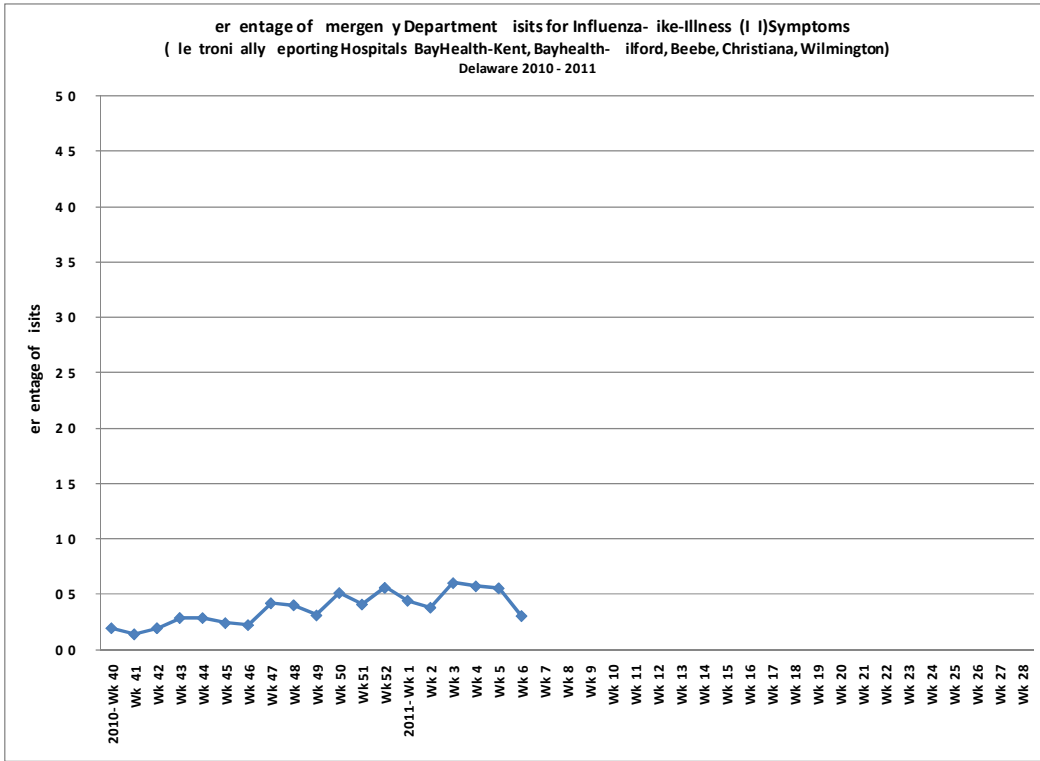
An ILINet (Sentinel) provider conducts surveillance for influenza-like illness (ILI) in collaboration with the state health department and the Centers for Disease Control and Prevention. Data reported by ILINet (Sentinel) providers, in combination with other influenza surveillance data, provide a national and statewide picture of influenza virus and ILI activity in the U.S.

**Influenza-like illness reported from ILINet (Sentinel) Providers
Delaware 2010-2011
11 of 17 Sentinels reporting**

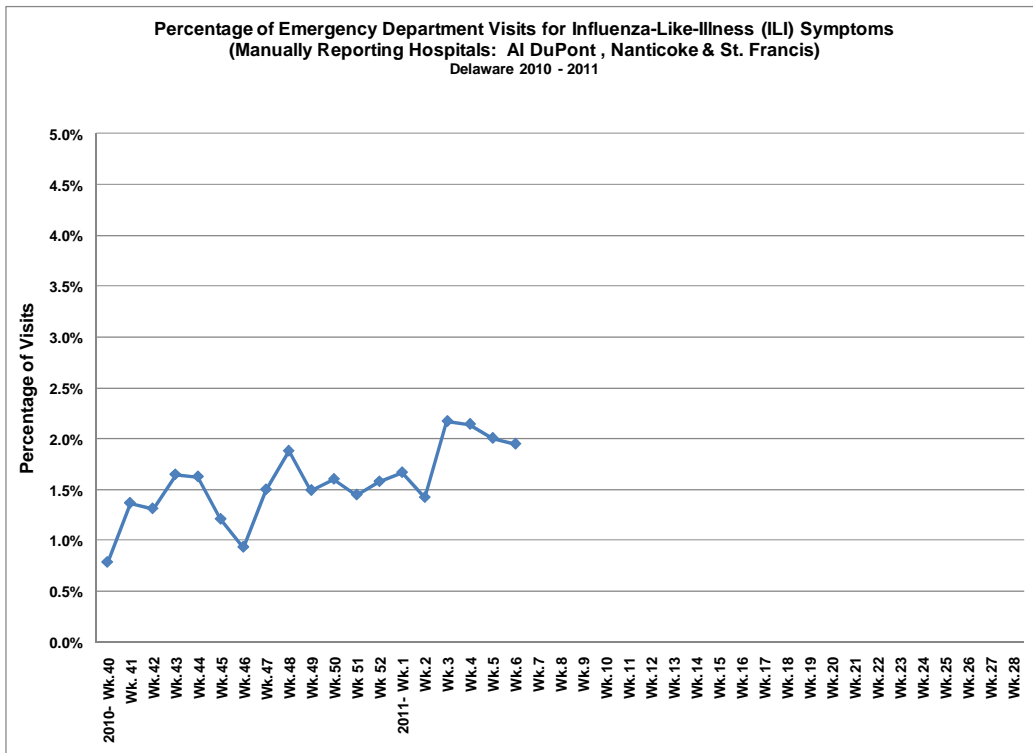


Regional Baseline for 2010-2011 applicable to: Region 3 (Delaware, District of Columbia, Maryland, Pennsylvania, Virginia & West Virginia); baseline= 2.6%.

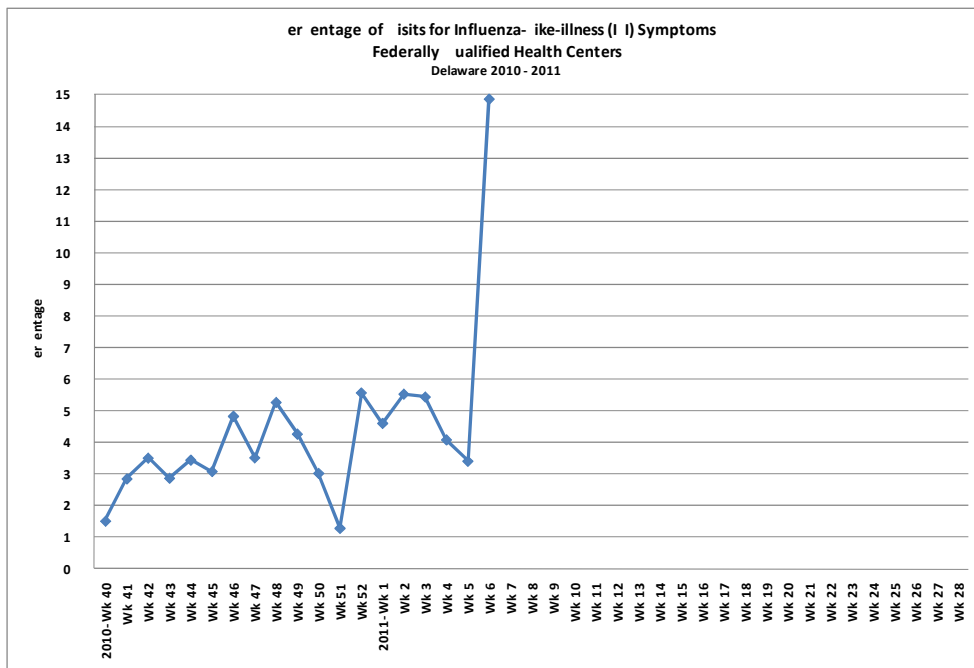
Hospital Electronic Surveillance Data: Delaware 2010-2011 5 of 5 hospitals reporting



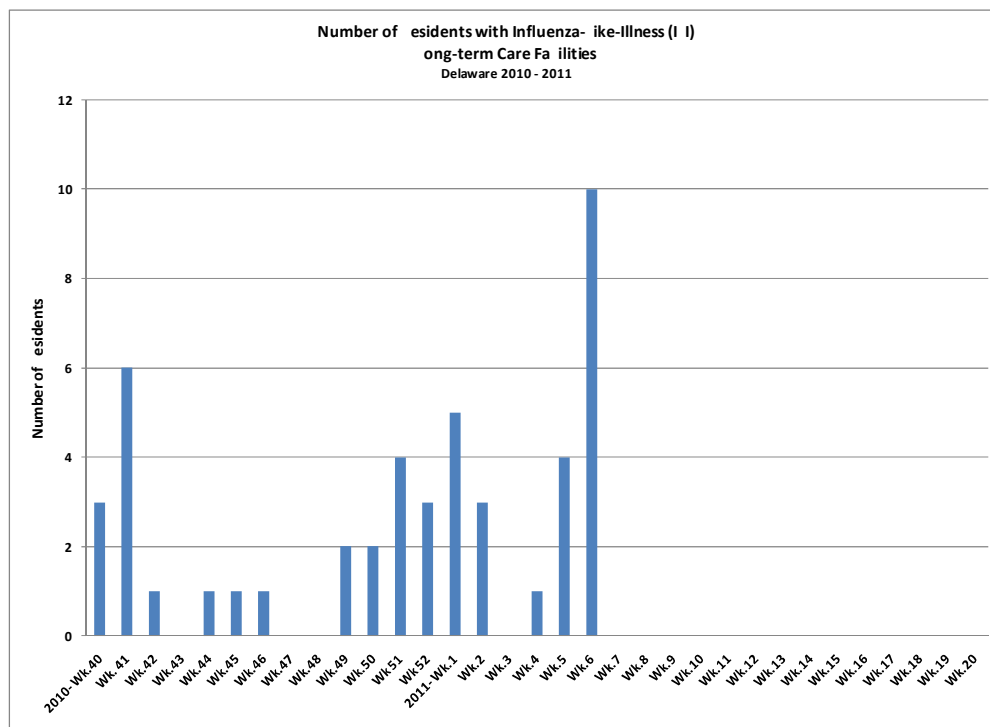
Hospital Manual Surveillance Data: Delaware 2010-2011 3 of 3 hospitals reporting



**Influenza-like illness reported from Federally Qualified Health Centers (FQHCs):
Delaware 2010-2011
1 of 2 centers reporting (Henrietta Johnson)**

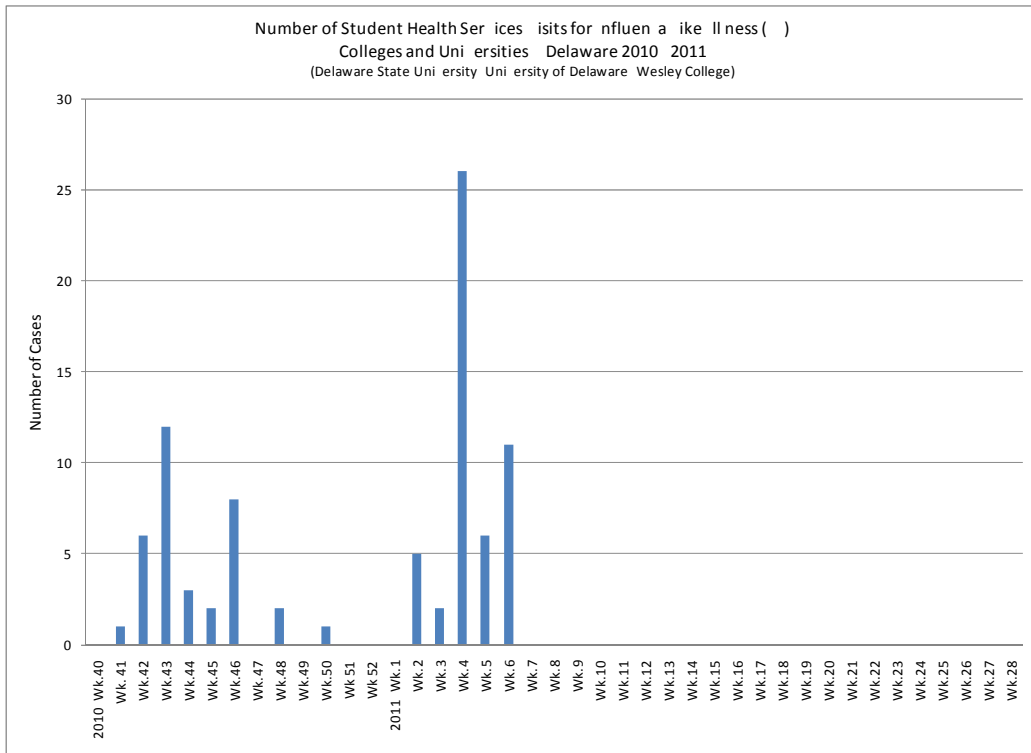


**Influenza-like illness reported from Long-Term Care Facilities (LTCFs):
Delaware 2010-2011
10 of 19 facilities reporting**

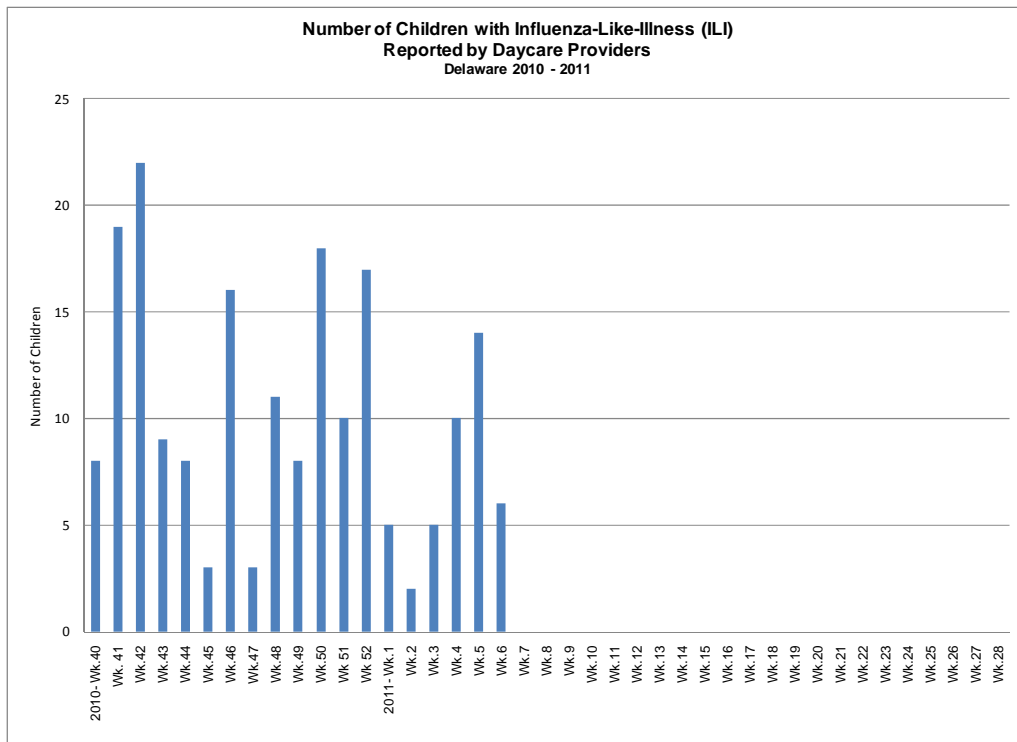


Influenza-like illness reported from Colleges/Universities: Delaware 2010-2011

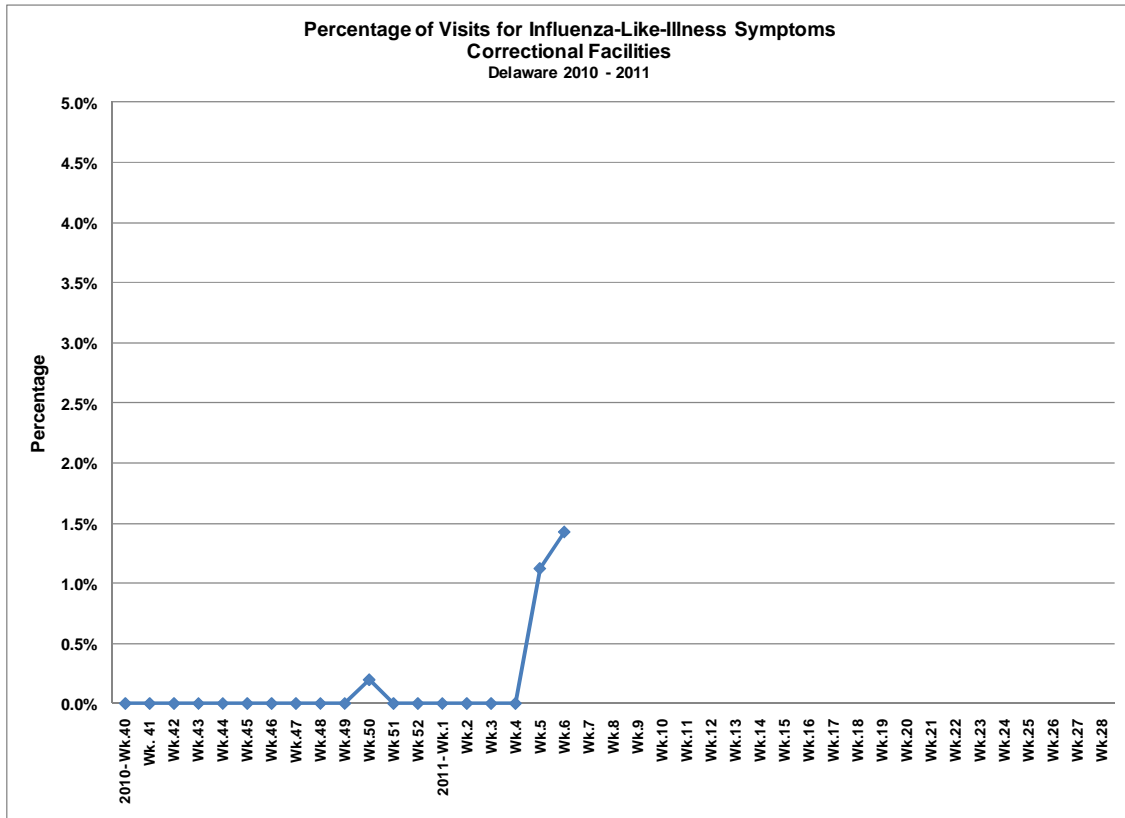
Delaware 2010 – 2011
2 of 3 schools reporting (Delaware State University and University of Delaware)



Influenza-like illness reported from Daycare Providers: Delaware 2010-2011
5 of 13 providers reporting



Influenza-like illness reported from DE Correctional Facilities: Delaware 2010-2011



The Division of Public Health is committed to serving you better. If you have not found the answers to your questions, please visit flu.delaware.gov or call (302) 744-4704.