



Delaware Weekly Influenza Report
Week 50 (December 8 – December 14, 2013)
Delaware Division of Public Health

National Synopsis 2013 – 2014

National data are updated Friday of each week. Please visit <http://www.cdc.gov/flu/weekly/> for the most current information. Briefly, influenza activity continues to increase in the United States. Four states reported widespread activity; 20 states reported regional activity; 17 states reported local activity; 8 states and D.C., Guam, and Puerto Rico report sporadic activity; 1 state reported no activity, and the U.S. Virgin Islands did not report.

Surrounding states in our region reported sporadic (PA, D.C., and WV), local (MD), and regional (VA) influenza activity.

Both national and state data are provisional and subject to change as additional reports are received.

Delaware Influenza Surveillance 2013 – 2014

There were 10 confirmed cases of influenza reported during week 50. Reports of influenza-like illness (ILI) received from participating providers, facilities, and institutions indicate a relatively low level of ILI in the community. Levels of ILI reported by sentinel providers participating in ILINet were approximately 1.1%, below the regional baseline of 2.0%.

Level of Influenza Activity¹ in Delaware, Week 50:

Sporadic

Small numbers of laboratory-confirmed² influenza cases or a single laboratory-confirmed influenza outbreak has been reported, but there is no increase in cases of ILI.

Influenza-like illness (ILI) is defined as patients presenting with fever of 100° F or greater, cough and/or sore throat in the absence of a known cause other than influenza.

No Activity: No laboratory-confirmed² cases of influenza and no reported increase in the number of cases of ILI.

Sporadic: Small numbers of laboratory-confirmed² influenza cases or a single laboratory-confirmed influenza outbreak has been reported, but there is no increase in cases of ILI.

Local: Outbreaks of influenza or increases in ILI cases and recent laboratory-confirmed² influenza in a single region of the state.

Regional: Outbreaks of influenza or increases in ILI and recent laboratory confirmed² influenza in at least two but less than half the regions of the state with recent laboratory evidence of influenza in those regions.

Widespread: Outbreaks of influenza or increases in ILI cases and recent laboratory-confirmed² influenza in at least half the regions of the state with recent laboratory evidence of influenza in the state.

¹ Activity levels may not be comparable across states because some states may use different definitions for lab confirmation of influenza cases. Some states may include rapid diagnostic tests as confirmatory while Delaware considers viral culture or PCR as confirmatory.

² Laboratory confirmed case= case confirmed by viral culture or PCR.

Table 1a. Influenza positive¹ cases reported², statewide and by county.

Confirmed Flu Cases by Subtype		Wk 40-43	Wk 44	Wk 45	Wk 46	Wk 47	Wk 48	Wk 49	Wk 50	YTD	YTD Total	YTD County%
Statewide	A (2009 H1)	0	0	1	1	10	3	3	3	21	40	100%
	A (H3)	1	0	0	0	0	0	1	0	2		
	A (subtyping not performed)	0	0	0	1	0	1	3	7	12		
	B	0	0	0	1	3	0	1	0	5		
New Castle County	A (2009 H1)	0	0	0	0	1	3	0	1	5	9	23%
	A (H3)	1	0	0	0	0	0	0	0	1		
	A (subtyping not performed)	0	0	0	0	0	0	0	0	0		
	B	0	0	0	0	2	0	1	0	3		
Kent County	A (2009 H1)	0	0	1	0	1	0	1	1	4	9	23%
	A (H3)	0	0	0	0	0	0	1	0	1		
	A (subtyping not performed)	0	0	0	1	0	1	1	1	4		
	B	0	0	0	0	0	0	0	0	0		
Sussex County	A (2009 H1)	0	0	0	1	8	0	2	1	12	22	55%
	A (H3)	0	0	0	0	0	0	0	0	0		
	A (subtyping not performed)	0	0	0	0	0	0	2	6	8		
	B	0	0	0	1	1	0	0	0	2		

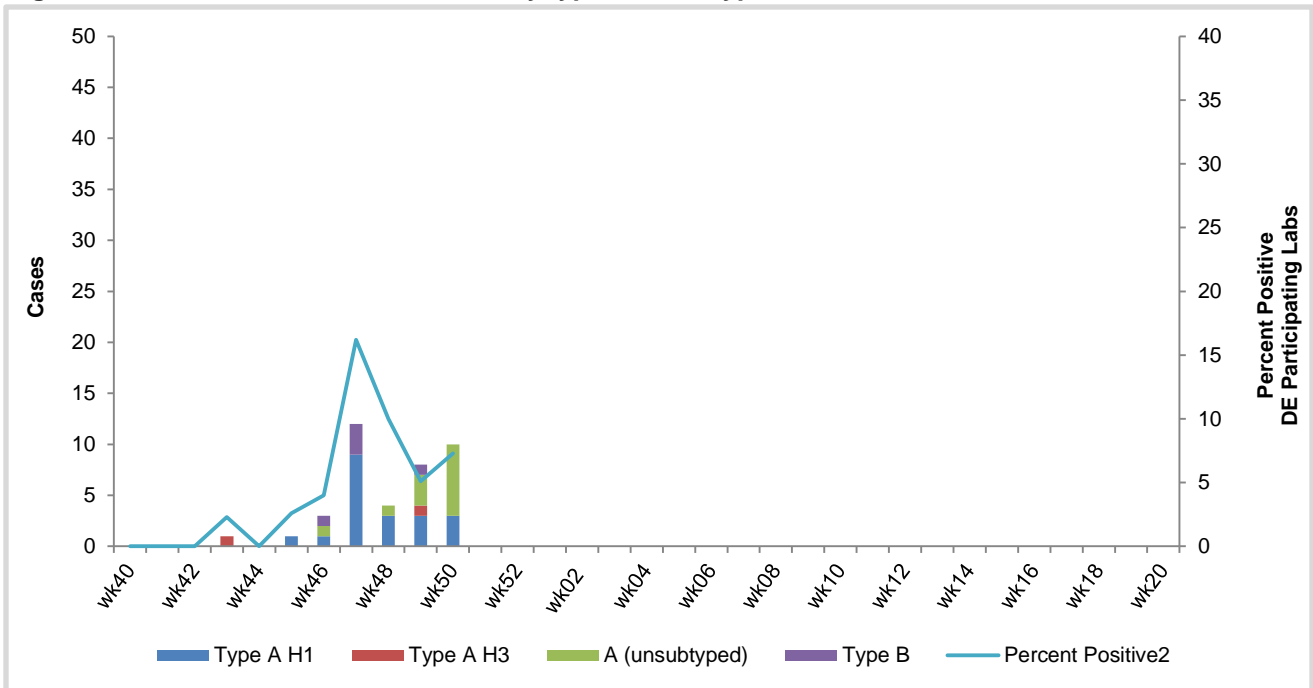
Table 1b. Age subgroup-specific influenza positive cases.

Confirmed Flu Cases by Age Group		Wk 40-43	Wk 44	Wk 45	Wk 46	Wk 47	Wk 48	Wk 49	Wk 50	YTD	YTD Total	YTD County%
Statewide	0-4 years	0	0	0	1	7	1	2	2	13	40	100%
	5-24 years	0	0	0	0	1	1	2	0	4		
	25-49 years	1	0	1	2	3	1	4	7	19		
	50-64 years	0	0	0	0	2	1	0	1	4		
	65+ years	0	0	0	0	0	0	0	0	0		
New Castle County	0-4 years	0	0	0	0	3	0	0	0	3	9	23%
	5-24 years	0	0	0	0	0	1	0	0	1		
	25-49 years	1	0	0	0	0	1	1	1	4		
	50-64 years	0	0	0	0	0	1	0	0	1		
	65+ years	0	0	0	0	0	0	0	0	0		
Kent County	0-4 years	0	0	0	0	0	1	2	0	3	9	23%
	5-24 years	0	0	0	0	0	0	0	0	0		
	25-49 years	0	0	1	1	1	0	1	2	6		
	50-64 years	0	0	0	0	0	0	0	0	0		
	65+ years	0	0	0	0	0	0	0	0	0		
Sussex County	0-4 years	0	0	0	1	3	0	0	2	6	22	55%
	5-24 years	0	0	0	0	1	0	2	0	3		
	25-49 years	0	0	0	1	3	0	2	4	10		
	50-64 years	0	0	0	0	2	0	0	1	3		
	65+ years	0	0	0	0	0	0	0	0	0		

¹Based on patients with positive nucleic acid or viral culture test results reported to the Division of Public Health.

²Reports are by date of specimen collection, not the date the results are obtained. As a result, prior weeks' counts may be adjusted to reflect additional cases received.

Figure 1. Confirmed cases¹ of influenza by type and subtype, Delaware 2013-2014 Influenza Season.



¹ Based on patients with positive nucleic acid or viral culture test results reported to the Delaware Division of Public Health. There were 10 confirmed case of influenza reported during MMWR 50. Confirmed cases are reported for the date the specimen was collected; not the data that positive test result was reported; this is different from the percent positive calculation.

² Percent positive= (number of specimens PCR positive for flu reported during the week) / (total number of specimens submitted during the week); lab data reflect the date the test result was reported and not the date that the specimen was collected. The percent positive reflects only the percent testing positive for specimens submitted by WHO/NREVSS Collaborating Laboratories in Delaware (includes Christiana Care and the Delaware Public Health Laboratory).

Table 2. Influenza-related hospitalizations, Delaware 2013-2014

Flu Related Hospitalizations		Wks 40-43	Wk 44	Wk 45	Wk 46	Wk 47	Wk 48	Wk 49	Wk 50	YTD	YTD Total	YTD County%
Statewide	0-4 years	0	0	0	0	0	0	0	0	0	1	100%
	5-24 years	0	0	0	0	0	0	0	0	0		
	25-49 years	0	0	0	0	0	0	0	0	0		
	50-64 years	0	0	0	0	1	0	0	0	1		
	65+ years	0	0	0	0	0	0	0	0	0		
New Castle County	0-4 years	0	0	0	0	0	0	0	0	0	0	0
	5-24 years	0	0	0	0	0	0	0	0	0		
	25-49 years	0	0	0	0	0	0	0	0	0		
	50-64 years	0	0	0	0	0	0	0	0	0		
	65+ years	0	0	0	0	0	0	0	0	0		
Kent County	0-4 years	0	0	0	0	0	0	0	0	0	0	0
	5-24 years	0	0	0	0	0	0	0	0	0		
	25-49 years	0	0	0	0	0	0	0	0	0		
	50-64 years	0	0	0	0	0	0	0	0	0		
	65+ years	0	0	0	0	0	0	0	0	0		
Sussex County	0-4 years	0	0	0	0	0	0	0	0	0	1	100%
	5-24 years	0	0	0	0	0	0	0	0	0		
	25-49 years	0	0	0	0	0	0	0	0	0		
	50-64 years	0	0	0	0	1	0	0	0	1		
	65+ years	0	0	0	0	0	0	0	0	0		

Table 3. Influenza-related deaths, Delaware 2013-2014

Flu- Related Deaths	Wk 40	Wk 41	Wk 42	Wk 43	Wk 44	Wk 45	Wk 46	Wk 47	Wk 48	Wk 49	Wk 50	Cumulative
	0	0	0	0	0	0	0	0	0	0	0	0

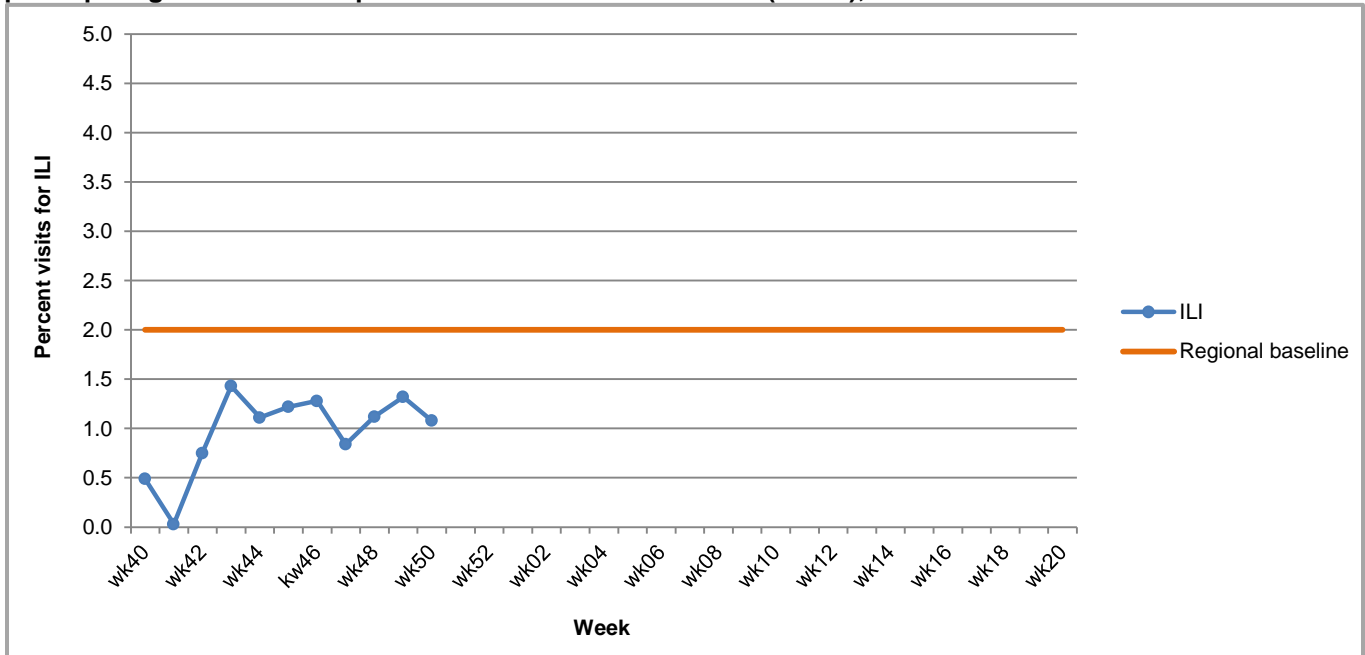
Table 4. Annual number of influenza cases reported by flu season, Delaware 2004 – 2013.

Influenza Season	Annual Flu Case Totals
2004 – 2005	995
2005 – 2006	541
2006 – 2007	508
2007 – 2008	1401
2008 – 2009	738
2009 – 2010	2247
2010 – 2011	1470
2011 – 2012	262
2012 – 2013	1773
2013 – 2014 (YTD)	40

U.S. Outpatient Influenza-like Illness Surveillance Network (ILINet) (Sentinel) Provider Surveillance Network:

An ILINet (sentinel) provider conducts surveillance of influenza-like illness (ILI) in collaboration with the Division of Public Health and the Centers for Disease Control and Prevention (CDC). Data reported by ILINet providers, in combination with other influenza surveillance data, provide a national and statewide picture of influenza activity in the U.S.

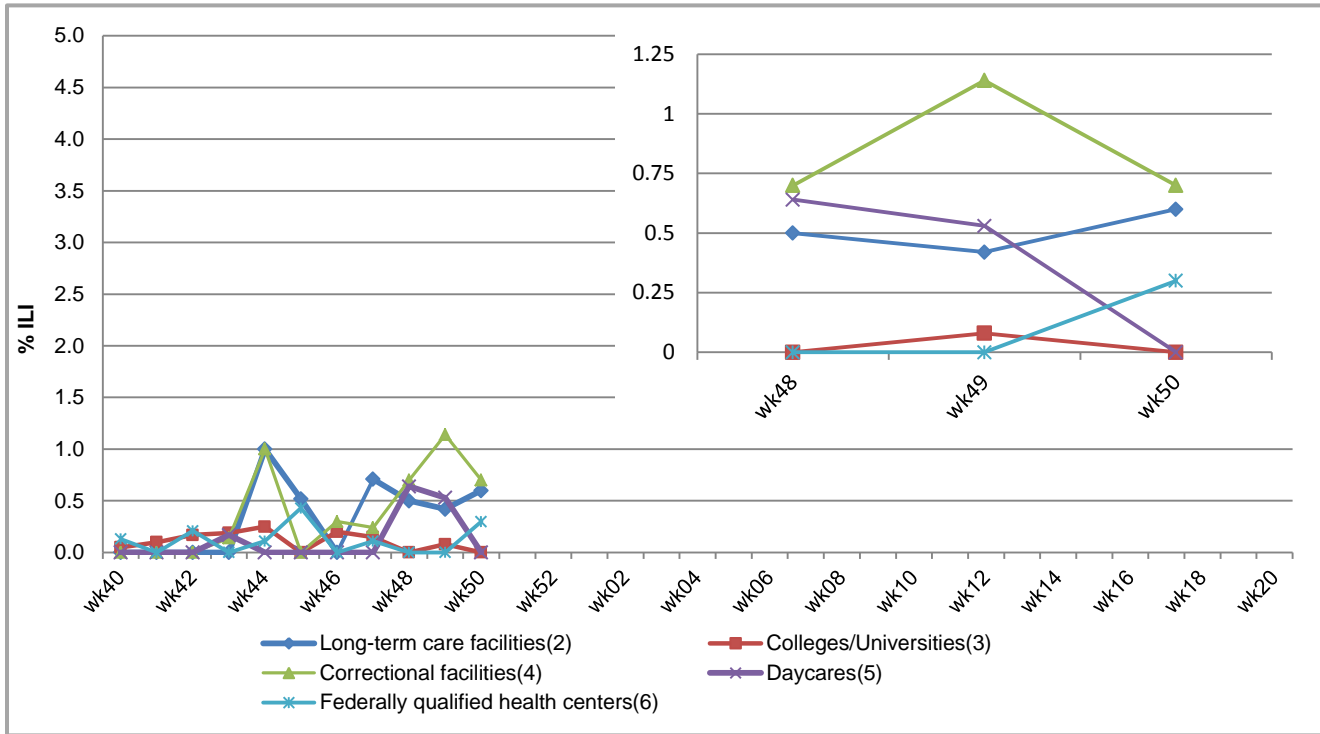
Figure 2. Percentage of visits for influenza-like illness (ILI) reported by sentinel healthcare providers¹ participating in the U.S. Outpatient ILI Surveillance Network (ILINet), Delaware 2013-2014.



¹ Eleven of 20 sentinel providers reported during Week 50.

² Regional baseline is calculated by CDC using non-influenza weeks from the previous 3 influenza seasons. Delaware is a member of Region 3 and includes DE, DC, MD, PA, VA, and WV. Regional baseline= 2.0%.

Figure 3. Influenza-Like Illness (ILI) reported by influenza surveillance reporting partners¹, Delaware 2013-2014.



¹ Reporting partners include long-term care facilities, colleges and universities, correctional facilities, daycares, and federally qualified health centers.

² % ILI= percentage of residents with ILI symptoms. Seven of 19 LTCFs reported for MMWR 50.

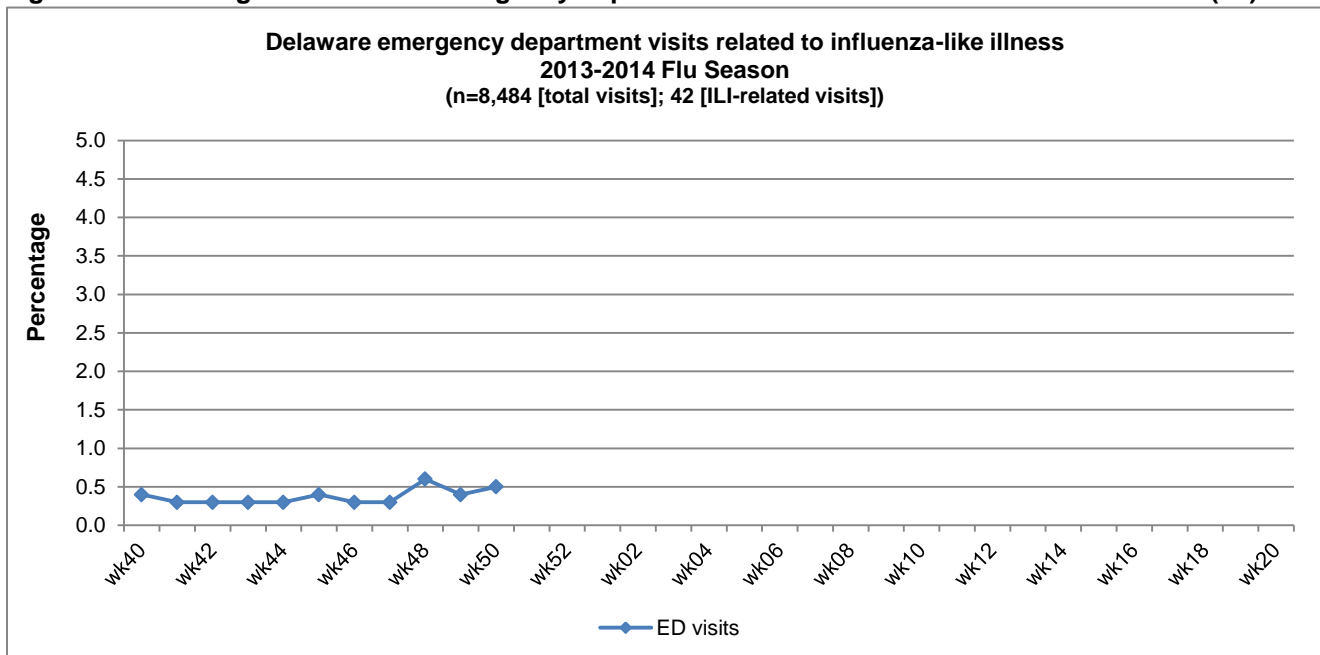
³ % ILI= percentage of student visits for ILI. Schools reporting include the University of Delaware, Delaware State University, and Wesley College.

⁴ % ILI= percentage of visits for ILI at the correctional facility. Ten of 10 facilities reported for MMWR 50.

⁵ % ILI= percentage of children absent with ILI. One of 12 daycare providers reported for MMWR 50.

⁶ % ILI= percentage of visits for ILI at FQHCs. FQHCs reporting include LARED and Henrietta Johnson Medical Center.

Figure 4. Percentage of Delaware emergency department visits related to Influenza Like Illness (ILI).



NOTE: Data provided do not reflect the total number of individuals who have been infected with the influenza virus in Delaware during the reporting period as a result of the following factors:

- Many people ill with influenza-like symptoms do not seek medical care.
- Many who do seek medical care are not tested for influenza.
- The Delaware Public Health Laboratory (DPHL) is limited by capacity to processing a maximum of 3 specimens per day from each reporting entity.

The Division of Public Health (DPH) is committed to serving you better. Please visit us at flu.delaware.gov or <http://dhss.delaware.gov/dhss/dph/dpc/immunize-flu.html> for general information on the flu or specific information on DPH flu clinics. For questions on Delaware's weekly flu report, please call the Office of Infectious Disease Epidemiology at 302-744-1033. For questions regarding influenza vaccination information, please call 302-744-1060.