



# Delaware Weekly Influenza Report

## MMWR Week 11 (March 10 - 16, 2019)

### Delaware Division of Public Health

#### National Influenza Synopsis 2018-2019:

National data are updated Friday of each week. Please visit <http://www.cdc.gov/flu/weekly/> for the most current information. During MMWR Week 11 (March 10 - 16, 2019) influenza activity remains elevated in the United States. Influenza A(H1N1)pdm09, influenza A(H3N2), and influenza B viruses continue to co-circulate. Geographic spread during week 11 is: **Widespread influenza activity** was reported by 44 states (Alabama, Alaska, Arizona, Arkansas, California, Colorado, Connecticut, **Delaware**, Florida, Georgia, Idaho, Illinois, Indiana, Iowa, Kansas, Kentucky, Louisiana, Maine, **Maryland**, Massachusetts, Michigan, Minnesota, Mississippi, Missouri, Montana, Nevada, New Hampshire, **New Jersey**, New Mexico, New York, North Carolina, North Dakota, Ohio, Oklahoma, Oregon, **Pennsylvania**, Rhode Island, South Carolina, South Dakota, Utah, Virginia, Washington, Wisconsin and Wyoming). **Regional influenza activity** was reported by Puerto Rico and four states (Nebraska, Tennessee, Texas and West Virginia). **Local influenza activity** was reported by the District of Columbia and two states (Hawaii and Vermont). **Sporadic influenza activity** was reported by the U.S. Virgin Islands. Guam did not report. Both national and state data are provisional and subject to change as additional reports are received.

#### Delaware Influenza Surveillance 2018-2019:

During MMWR Week 11 there were 466 laboratory-confirmed cases of influenza reported among Delaware residents, bringing the total to 5,551 for the 2018-2019 season. Reports of influenza-like illness (ILI) received from participating providers, facilities and institutions in Delaware show ILI remains at 1.3%, below the 2018-2019 baseline of 2.0%. Nationally, ILI remains at 4.4%, above the national baseline of 2.2%.

#### Level of Influenza Activity in Delaware, MMWR Week 11:

|   |   |
|---|---|
| <b>Widespread</b>   | Outbreaks of influenza or increases in ILI cases and recent laboratory-confirmed influenza in at least half the regions of the state with recent laboratory evidence of influenza in the state. |
| Influenza-like illness (ILI) is defined as patients presenting with fever of 100° F or greater, cough and/or sore throat in the absence of a known cause other than influenza.  |   |
| <p><b>No Activity:</b> No laboratory-confirmed cases of influenza and no reported increase in the number of cases of ILI.</p> <p><b>Sporadic:</b> Small numbers of laboratory-confirmed influenza cases or a single laboratory-confirmed influenza outbreak has been reported, but there is no increase in cases of ILI.</p> <p><b>Local:</b> Outbreaks of influenza or increases in ILI cases and recent laboratory-confirmed influenza in a single region of the state.</p> <p><b>Regional:</b> Outbreaks of influenza or increases in ILI and recent laboratory-confirmed influenza in at least two but less than half the regions of the state with recent laboratory evidence of influenza in those regions.<sup>3</sup></p> <p><b>Widespread:</b> Outbreaks of influenza or increases in ILI cases and recent laboratory-confirmed influenza in at least half the regions of the state with recent laboratory evidence of influenza in the state.</p> |   |

<sup>1</sup> 2018-2019 Region 3 (DE, DC, MD, PA, VA and WV) baseline = 2.0%.

<sup>2</sup> Laboratory-confirmed case = case confirmed by viral culture or PCR.

<sup>3</sup> Region = population under surveillance in a defined geographical subdivision of a state. Regions typically include several counties. Regional doesn't apply to states with ≤ four counties.

| <u>In this report:</u>   | <u>page</u> |
|--|-------------|
| Table 1a. Influenza positive cases reported statewide and county, by subtype / lineage and MMWR week, Delaware 2018-19                   | 2           |
| Table 1b. Influenza positive cases reported statewide and county, by age group and MMWR week, Delaware 2018-19                           | 2           |
| Figure 1. Confirmed cases of influenza by type and subtype / lineage, by MMWR week, Delaware 2018-19                                     | 3           |
| Table 2. Influenza-related hospitalizations, statewide and county, by age group and MMWR week, Delaware 2018-19                          | 3           |
| Table 3. Influenza-related deaths by MMWR week, Delaware 2018-19   | 3           |
| Table 4. Numbers of influenza cases reported by flu season, Delaware 2004-05 through 2018-19   | 4           |
| Figure 2. Percentage of visits for influenza-like illness reported by sentinel providers participating in CDC's ILINet, Delaware 2018-19 | 4           |
| Figure 3. Influenza-like illness reported by ILI reporting partners by MMWR week, Delaware 2018-19                                       | 5           |
| Figures 4a and 4b. Percentages of emergency department (ED) visits due to ILI/Flu by MMWR week, Delaware 2018-19                         | 5           |
| Figures 5a and 5b. Numbers of ED visits due to Respiratory Syncytial Virus (RSV) by MMWR week, Delaware, 2018-19                         | 6           |
| Summary of International Influenza Activity  | 7           |

**Table 1a. Influenza positive<sup>1</sup> cases reported<sup>2</sup> statewide and county by subtype (A) or lineage (B)<sup>3</sup>, Delaware 2018-19**

| Confirmed Flu Cases by Subtype / Lineage | Wks 40-49      | Wk 50 | Wk 51 | Wk 52 | Wk 1 | Wk 2 | Wk 3 | Wk 4 | Wk 5 | Wk 6 | Wk 7 | Wk 8 | Wk 9 | Wk 10 | Wk 11 | YTD | YTD Total    | YTD County % |       |
|--|----------------|-------|-------|-------|------|------|------|------|------|------|------|------|------|-------|-------|-----|--------------|--------------|-------|
| <b>STATEWIDE</b>                         | A / 2009 H1N1  | 38    | 26    | 42    | 36   | 43   | 33   | 47   | 55   | 50   | 39   | 24   | 42   | 24    | 21    | 26  | <b>546</b>   | 5,551        |       |
|  | A / 2012 H3N2  | 3     | 2     | 5     | 5    | 4    | 0    | 4    | 7    | 26   | 37   | 59   | 92   | 74    | 38    | 46  | <b>402</b>   |              |       |
|  | A / no subtype | 140   | 68    | 132   | 182  | 155  | 130  | 196  | 253  | 347  | 539  | 502  | 542  | 445   | 459   | 377 | <b>4,467</b> |              |       |
|  | Co-infection   | 2     | 0     | 0     | 0    | 0    | 0    | 0    | 1    | 0    | 0    | 0    | 1    | 0     | 1     | 0   | <b>5</b>     |              |       |
|  | B / Yamagata   | 3     | 0     | 0     | 0    | 0    | 0    | 0    | 0    | 0    | 0    | 1    | 0    | 0     | 1     | 0   | <b>5</b>     |              |       |
|  | B / Victoria   | 0     | 0     | 0     | 0    | 0    | 0    | 0    | 0    | 0    | 0    | 0    | 0    | 0     | 1     | 2   | <b>3</b>     |              |       |
|  | B / no lineage | 2     | 2     | 0     | 1    | 4    | 4    | 8    | 6    | 4    | 16   | 14   | 11   | 10    | 26    | 15  | <b>123</b>   |              |       |
| <b>New Castle County</b>                 | A / 2009 H1N1  | 23    | 21    | 31    | 24   | 29   | 26   | 32   | 39   | 34   | 24   | 16   | 20   | 10    | 8     | 11  | <b>348</b>   | 2,150        | 38.7% |
|  | A / 2012 H3N2  | 1     | 2     | 3     | 5    | 3    | 0    | 3    | 6    | 16   | 27   | 36   | 71   | 52    | 26    | 24  | <b>275</b>   |              |       |
|  | A / no subtype | 35    | 27    | 41    | 55   | 34   | 52   | 67   | 104  | 131  | 209  | 175  | 176  | 142   | 130   | 131 | <b>1,509</b> |              |       |
|  | Co-infection   | 0     | 0     | 0     | 0    | 0    | 0    | 0    | 1    | 0    | 0    | 0    | 1    | 0     | 0     | 0   | <b>2</b>     |              |       |
|  | B / Yamagata   | 0     | 0     | 0     | 0    | 0    | 0    | 0    | 0    | 0    | 0    | 1    | 0    | 0     | 0     | 0   | <b>1</b>     |              |       |
|  | B / Victoria   | 0     | 0     | 0     | 0    | 0    | 0    | 0    | 0    | 0    | 0    | 0    | 0    | 0     | 1     | 1   | <b>2</b>     |              |       |
|  | B / no lineage | 0     | 1     | 0     | 1    | 1    | 0    | 0    | 1    | 0    | 1    | 2    | 5    | 0     | 1     | 1   | <b>13</b>    |              |       |
| <b>Kent County</b>                       | A / 2009 H1N1  | 13    | 4     | 6     | 6    | 6    | 2    | 6    | 9    | 10   | 15   | 3    | 12   | 10    | 8     | 7   | <b>117</b>   | 1,432        | 25.8% |
|  | A / 2012 H3N2  | 2     | 0     | 2     | 0    | 1    | 0    | 0    | 0    | 4    | 6    | 16   | 14   | 13    | 10    | 10  | <b>78</b>    |              |       |
|  | A / no subtype | 83    | 27    | 48    | 50   | 47   | 20   | 35   | 51   | 63   | 133  | 103  | 141  | 132   | 138   | 116 | <b>1,187</b> |              |       |
|  | Co-infection   | 0     | 0     | 0     | 0    | 0    | 0    | 0    | 0    | 0    | 0    | 0    | 0    | 0     | 0     | 0   | <b>0</b>     |              |       |
|  | B / Yamagata   | 3     | 0     | 0     | 0    | 0    | 0    | 0    | 0    | 0    | 0    | 0    | 0    | 0     | 0     | 0   | <b>3</b>     |              |       |
|  | B / Victoria   | 0     | 0     | 0     | 0    | 0    | 0    | 0    | 0    | 0    | 0    | 0    | 0    | 0     | 0     | 0   | <b>0</b>     |              |       |
|  | B / no lineage | 0     | 0     | 0     | 0    | 0    | 2    | 7    | 4    | 2    | 13   | 10   | 2    | 2     | 4     | 1   | <b>47</b>    |              |       |
| <b>Sussex County</b>                     | A / 2009 H1N1  | 2     | 1     | 5     | 6    | 8    | 5    | 9    | 7    | 6    | 0    | 5    | 10   | 4     | 5     | 8   | <b>81</b>    | 1,969        | 35.5% |
|  | A / 2012 H3N2  | 0     | 0     | 0     | 0    | 0    | 0    | 1    | 1    | 6    | 4    | 7    | 7    | 9     | 2     | 12  | <b>49</b>    |              |       |
|  | A / no subtype | 22    | 14    | 43    | 77   | 74   | 58   | 94   | 98   | 153  | 197  | 224  | 225  | 171   | 191   | 130 | <b>1,771</b> |              |       |
|  | Co-infection   | 2     | 0     | 0     | 0    | 0    | 0    | 0    | 0    | 0    | 0    | 0    | 0    | 0     | 1     | 0   | <b>3</b>     |              |       |
|  | B / Yamagata   | 0     | 0     | 0     | 0    | 0    | 0    | 0    | 0    | 0    | 0    | 0    | 0    | 0     | 1     | 0   | <b>1</b>     |              |       |
|  | B / Victoria   | 0     | 0     | 0     | 0    | 0    | 0    | 0    | 0    | 0    | 0    | 0    | 0    | 0     | 0     | 1   | <b>1</b>     |              |       |
|  | B / no lineage | 2     | 1     | 0     | 0    | 3    | 2    | 1    | 2    | 1    | 3    | 3    | 7    | 3     | 22    | 13  | <b>63</b>    |              |       |

**Table 1b. Influenza positive<sup>1</sup> cases reported<sup>2</sup> statewide and county by age group, Delaware 2018-19**

| Confirmed Flu Cases by Age Group | Wks 40-49   | Wk 50 | Wk 51 | Wk 52 | Wk 1 | Wk 2 | Wk 3 | Wk 4 | Wk 5 | Wk 6 | Wk 7 | Wk 8 | Wk 9 | Wk 10 | Wk 11 | YTD | YTD Total    | YTD County % |       |
|----------------------------------|-------------|-------|-------|-------|------|------|------|------|------|------|------|------|------|-------|-------|-----|--------------|--------------|-------|
| <b>STATEWIDE</b>                 | 0-4 years   | 38    | 25    | 40    | 62   | 58   | 55   | 69   | 77   | 87   | 121  | 128  | 137  | 114   | 97    | 113 | <b>1,221</b> | 5,551        |       |
|                                  | 5-24 years  | 48    | 31    | 64    | 48   | 28   | 36   | 65   | 91   | 161  | 248  | 223  | 255  | 199   | 187   | 126 | <b>1,809</b> |              |       |
|                                  | 25-49 years | 45    | 20    | 45    | 54   | 48   | 32   | 57   | 71   | 80   | 114  | 81   | 120  | 93    | 87    | 69  | <b>1,016</b> |              |       |
|                                  | 50-64 years | 28    | 16    | 17    | 31   | 33   | 24   | 37   | 46   | 56   | 69   | 81   | 96   | 53    | 80    | 62  | <b>729</b>   |              |       |
|                                  | 65+ years   | 29    | 6     | 13    | 29   | 39   | 20   | 27   | 37   | 43   | 79   | 87   | 80   | 94    | 97    | 96  | <b>776</b>   |              |       |
| <b>New Castle County</b>         | 0-4 years   | 12    | 10    | 21    | 28   | 17   | 25   | 25   | 45   | 42   | 58   | 42   | 44   | 45    | 32    | 41  | <b>487</b>   | 2,150        | 38.7% |
|                                  | 5-24 years  | 14    | 18    | 27    | 20   | 12   | 14   | 22   | 40   | 64   | 86   | 73   | 108  | 74    | 45    | 37  | <b>653</b>   |              |       |
|                                  | 25-49 years | 14    | 11    | 13    | 21   | 16   | 17   | 25   | 25   | 39   | 51   | 36   | 50   | 30    | 24    | 26  | <b>398</b>   |              |       |
|                                  | 50-64 years | 9     | 9     | 9     | 7    | 8    | 14   | 17   | 20   | 24   | 31   | 34   | 34   | 21    | 32    | 20  | <b>289</b>   |              |       |
|                                  | 65+ years   | 10    | 3     | 5     | 9    | 14   | 8    | 13   | 20   | 13   | 34   | 44   | 34   | 39    | 33    | 44  | <b>323</b>   |              |       |
| <b>Kent County</b>               | 0-4 years   | 19    | 10    | 9     | 8    | 18   | 7    | 13   | 11   | 15   | 34   | 25   | 54   | 39    | 32    | 35  | <b>329</b>   | 1,432        | 25.8% |
|                                  | 5-24 years  | 27    | 10    | 24    | 10   | 7    | 5    | 16   | 19   | 28   | 64   | 52   | 53   | 67    | 55    | 51  | <b>488</b>   |              |       |
|                                  | 25-49 years | 27    | 7     | 17    | 13   | 10   | 7    | 13   | 18   | 14   | 35   | 16   | 27   | 25    | 30    | 17  | <b>276</b>   |              |       |
|                                  | 50-64 years | 14    | 2     | 6     | 13   | 6    | 2    | 4    | 9    | 13   | 17   | 17   | 23   | 10    | 17    | 18  | <b>171</b>   |              |       |
|                                  | 65+ years   | 14    | 2     | 0     | 12   | 13   | 3    | 2    | 7    | 9    | 17   | 22   | 12   | 16    | 26    | 13  | <b>168</b>   |              |       |
| <b>Sussex County</b>             | 0-4 years   | 7     | 5     | 10    | 26   | 23   | 23   | 31   | 21   | 30   | 29   | 61   | 39   | 30    | 33    | 37  | <b>405</b>   | 1,969        | 35.5% |
|                                  | 5-24 years  | 7     | 3     | 13    | 18   | 9    | 17   | 27   | 32   | 69   | 98   | 98   | 94   | 58    | 87    | 38  | <b>668</b>   |              |       |
|                                  | 25-49 years | 4     | 2     | 15    | 20   | 22   | 8    | 19   | 28   | 27   | 28   | 29   | 43   | 38    | 33    | 26  | <b>342</b>   |              |       |
|                                  | 50-64 years | 5     | 5     | 2     | 11   | 19   | 8    | 16   | 17   | 19   | 21   | 30   | 39   | 22    | 31    | 24  | <b>269</b>   |              |       |
|                                  | 65+ years   | 5     | 1     | 8     | 8    | 12   | 9    | 12   | 10   | 21   | 28   | 21   | 34   | 39    | 38    | 39  | <b>285</b>   |              |       |

<sup>1</sup> Based on patients with positive nucleic acid or viral culture test results reported to the Division of Public Health.

<sup>2</sup> Reports are by the date the laboratory results are obtained. As a result, prior weeks' counts may be adjusted to reflect additional cases received.

<sup>3</sup> The Division of Public Health Laboratory now has the capability to identify lineage for Influenza B. Since some laboratories in the state do not have this capability, those influenza cases are categorized as Influenza B, no lineage identified.

Figure 1. Confirmed cases<sup>1</sup> of influenza by type and subtype/lineage, Delaware 2018-2019 influenza season\*

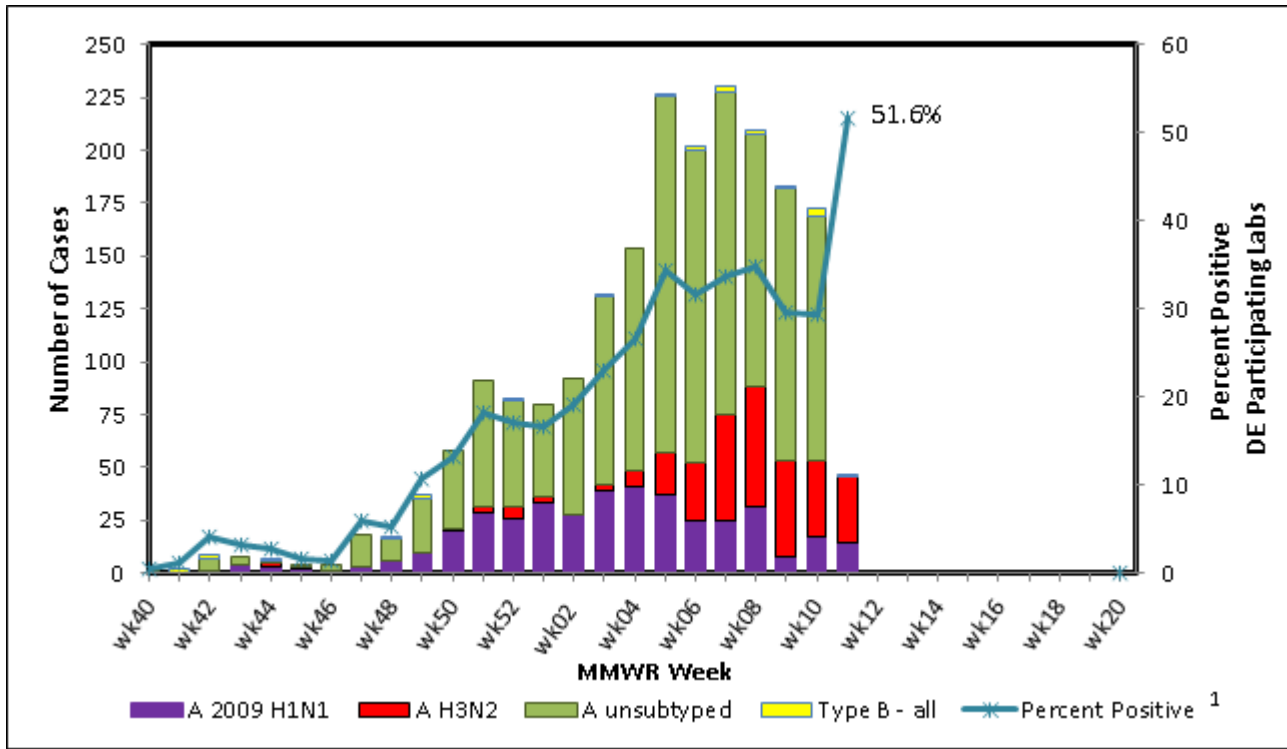


Table 2. Influenza-related hospitalizations statewide and county, by age group, Delaware 2018-19

| Hospitalized Flu Cases by Age Group |             | Wks 40-49 | Wk 50 | Wk 51 | Wk 52 | Wk 1 | Wk 2 | Wk 3 | Wk 4 | Wk 5 | Wk 6 | Wk 7 | Wk 8 | Wk 9 | Wk 10 | Wk 11 | YTD | YTD Total | YTD County % |
|-------------------------------------|-------------|-----------|-------|-------|-------|------|------|------|------|------|------|------|------|------|-------|-------|-----|-----------|--------------|
| STATEWIDE                           | 0-4 years   | 1         | 2     | 5     | 4     | 2    | 5    | 5    | 8    | 1    | 12   | 5    | 9    | 9    | 1     | 3     | 72  | 885       |              |
|                                     | 5-24 years  | 0         | 1     | 5     | 0     | 1    | 2    | 4    | 4    | 5    | 4    | 7    | 4    | 4    | 2     | 4     | 47  |           |              |
|                                     | 25-49 years | 7         | 3     | 3     | 4     | 5    | 4    | 7    | 11   | 9    | 8    | 8    | 9    | 8    | 9     | 6     | 101 |           |              |
|                                     | 50-64 years | 7         | 9     | 6     | 14    | 9    | 6    | 12   | 14   | 21   | 17   | 27   | 25   | 10   | 37    | 17    | 231 |           |              |
|                                     | 65+ years   | 19        | 5     | 7     | 18    | 24   | 10   | 17   | 30   | 21   | 45   | 48   | 42   | 40   | 54    | 54    | 434 |           |              |
| New Castle County                   | 0-4 years   | 0         | 1     | 1     | 2     | 1    | 3    | 4    | 6    | 1    | 5    | 4    | 7    | 6    | 0     | 1     | 42  | 447       | 50.5%        |
|                                     | 5-24 years  | 0         | 1     | 4     | 0     | 1    | 2    | 2    | 3    | 3    | 2    | 6    | 1    | 4    | 1     | 4     | 34  |           |              |
|                                     | 25-49 years | 3         | 2     | 1     | 2     | 2    | 3    | 5    | 5    | 6    | 7    | 5    | 6    | 4    | 3     | 5     | 59  |           |              |
|                                     | 50-64 years | 2         | 6     | 1     | 4     | 2    | 4    | 7    | 6    | 9    | 10   | 14   | 9    | 5    | 18    | 7     | 104 |           |              |
|                                     | 65+ years   | 6         | 2     | 4     | 5     | 11   | 7    | 8    | 19   | 6    | 22   | 28   | 19   | 20   | 24    | 27    | 208 |           |              |
| Kent County                         | 0-4 years   | 0         | 1     | 3     | 1     | 1    | 0    | 0    | 0    | 0    | 4    | 0    | 2    | 0    | 0     | 1     | 13  | 202       | 22.8%        |
|                                     | 5-24 years  | 0         | 0     | 0     | 0     | 0    | 0    | 1    | 0    | 1    | 1    | 0    | 1    | 0    | 0     | 0     | 4   |           |              |
|                                     | 25-49 years | 4         | 1     | 2     | 1     | 2    | 0    | 1    | 3    | 2    | 0    | 1    | 1    | 2    | 0     | 1     | 21  |           |              |
|                                     | 50-64 years | 4         | 1     | 4     | 7     | 3    | 0    | 1    | 4    | 9    | 5    | 8    | 9    | 2    | 8     | 4     | 69  |           |              |
|                                     | 65+ years   | 10        | 2     | 0     | 6     | 7    | 0    | 1    | 6    | 5    | 9    | 11   | 6    | 10   | 13    | 9     | 95  |           |              |
| Sussex County                       | 0-4 years   | 1         | 0     | 1     | 1     | 0    | 2    | 1    | 2    | 0    | 3    | 1    | 0    | 3    | 1     | 1     | 17  | 236       | 26.7%        |
|                                     | 5-24 years  | 0         | 0     | 1     | 0     | 0    | 0    | 1    | 1    | 1    | 1    | 1    | 2    | 0    | 1     | 0     | 9   |           |              |
|                                     | 25-49 years | 0         | 0     | 0     | 1     | 1    | 1    | 1    | 3    | 1    | 1    | 2    | 2    | 2    | 6     | 0     | 21  |           |              |
|                                     | 50-64 years | 1         | 2     | 1     | 3     | 4    | 2    | 4    | 4    | 3    | 2    | 5    | 7    | 3    | 11    | 6     | 58  |           |              |
|                                     | 65+ years   | 3         | 1     | 3     | 7     | 6    | 3    | 8    | 5    | 10   | 14   | 9    | 17   | 10   | 17    | 18    | 131 |           |              |

Table 3. Influenza-related deaths, Delaware 2018-19

| Influenza-Related Deaths | Wks 40-49 | Wk 50 | Wk 51 | Wk 52 | Wk 1 | Wk 2 | Wk 3 | Wk 4 | Wk 5 | Wk 6 | Wk 7 | Wk 8 | Wk 9 | Wk 10 | Wk 11 | YTD |
|--------------------------|-----------|-------|-------|-------|------|------|------|------|------|------|------|------|------|-------|-------|-----|
|                          | 0         | 0     | 0     | 1     | 2    | 2    | 0    | 2    | 4    | 1    | 1    | 2    | 2    | 1     | 1     | 19  |

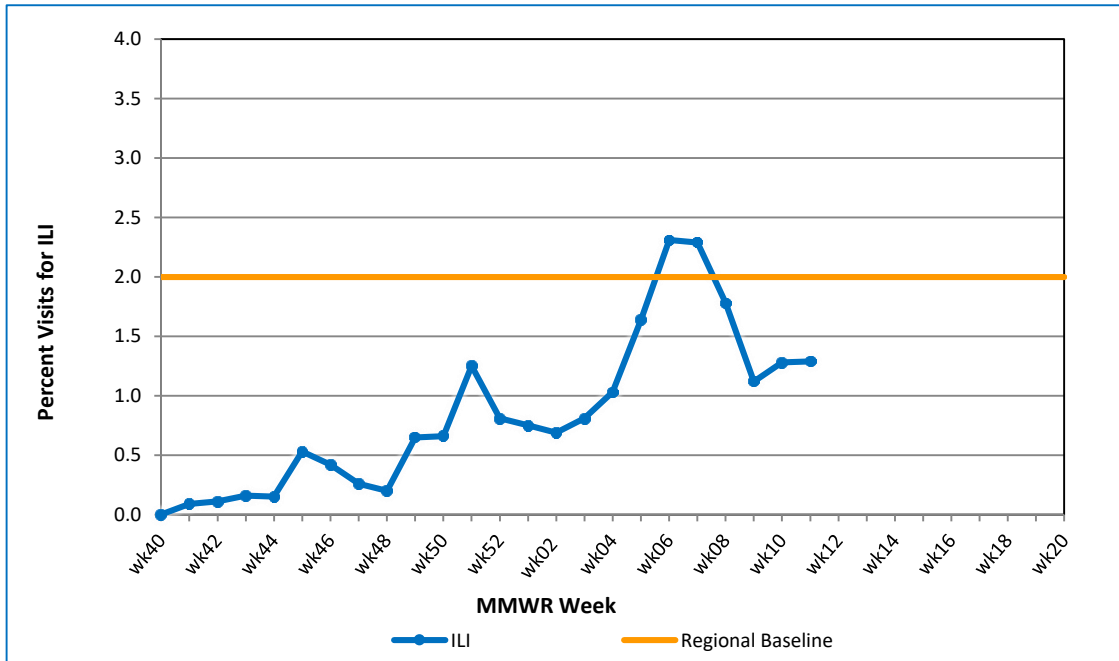
**Table 4. Annual number of influenza cases reported by flu season, Delaware 2004-05 through 2018-19**

| Influenza Season         | Total Annual Influenza Cases |
|--------------------------|------------------------------|
| 2004 – 2005              | 995                          |
| 2005 – 2006              | 541                          |
| 2006 – 2007              | 508                          |
| 2007 – 2008              | 1,401                        |
| 2008 – 2009              | 738                          |
| 2009 – 2010              | 2,247                        |
| 2010 – 2011              | 1,479                        |
| 2011 – 2012              | 267                          |
| 2012 – 2013              | 1,781                        |
| 2013 – 2014              | 1,842                        |
| 2014 – 2015              | 2,390                        |
| 2015 – 2016              | 1,842                        |
| 2016 – 2017              | 4,590                        |
| 2017 – 2018              | 9,051                        |
| <b>2018 – 2019 (YTD)</b> | <b>5,551</b>                 |

**U.S. Outpatient Influenza-Like Illness Surveillance Network (ILINet) Sentinel Providers**

An ILINet (sentinel) provider conducts surveillance for influenza-like illness (ILI) in collaboration with the Delaware Division of Public Health and the Centers for Disease Control and Prevention (CDC). Data reported by ILINet providers, in combination with other influenza surveillance data, provide a national and statewide picture of influenza activity in the U.S.

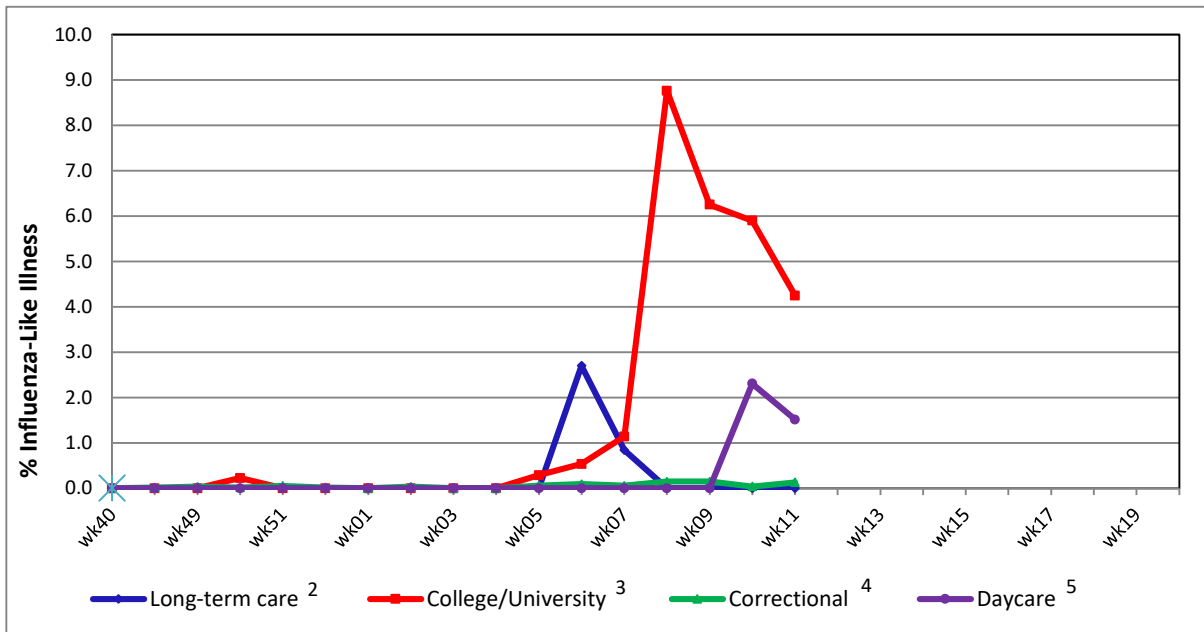
**Figure 2. Percentage of visits for influenza-like illness reported by sentinel providers<sup>1</sup> participating in the U.S. Outpatient ILI Surveillance Network (ILINet), Delaware 2018-19**



<sup>1</sup> Ten of 12 sentinel providers reported.

<sup>2</sup> Regional baseline is calculated by CDC using non-influenza weeks from the previous three influenza seasons. Delaware is in Region 3 that also includes DC, MD, PA, VA and WV.

Figure 3. Influenza-like illness reported by influenza surveillance ILI reporting partners<sup>1</sup>, Delaware 2018-19



<sup>1</sup> ILINet reporting partners include long-term care facilities, colleges / universities, correctional facilities and daycare facilities.  
<sup>2</sup> % ILI= percentage of residents with ILI symptoms. Seven long-term care facilities reported.  
<sup>3</sup> % ILI= percentage of student visits for ILI; Two universities reported.  
<sup>4</sup> % ILI= percentage of visits for ILI at the correctional facility; Nine correctional facilities reported.  
<sup>5</sup> % ILI= percentage of children absent with ILI; One daycare provider reported.

Figure 4a. Percentage of emergency department (ED) visits due to ILI/Flu by MMWR Week, Delaware, 2018-19

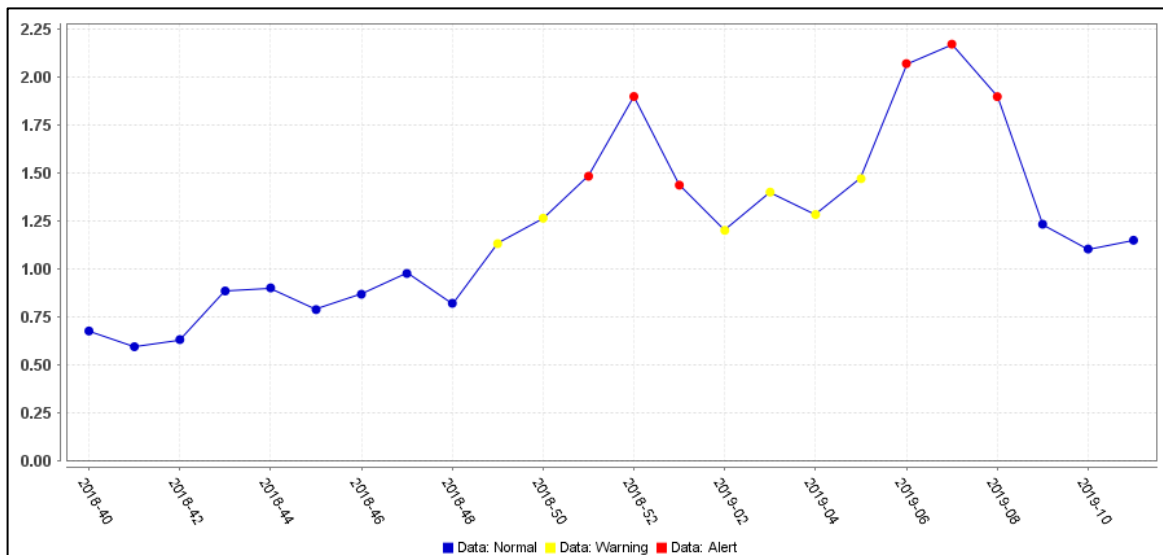


Figure 4b. County-specific percentages of ED visits due to ILI/Flu by MMWR Week, Delaware 2018-19

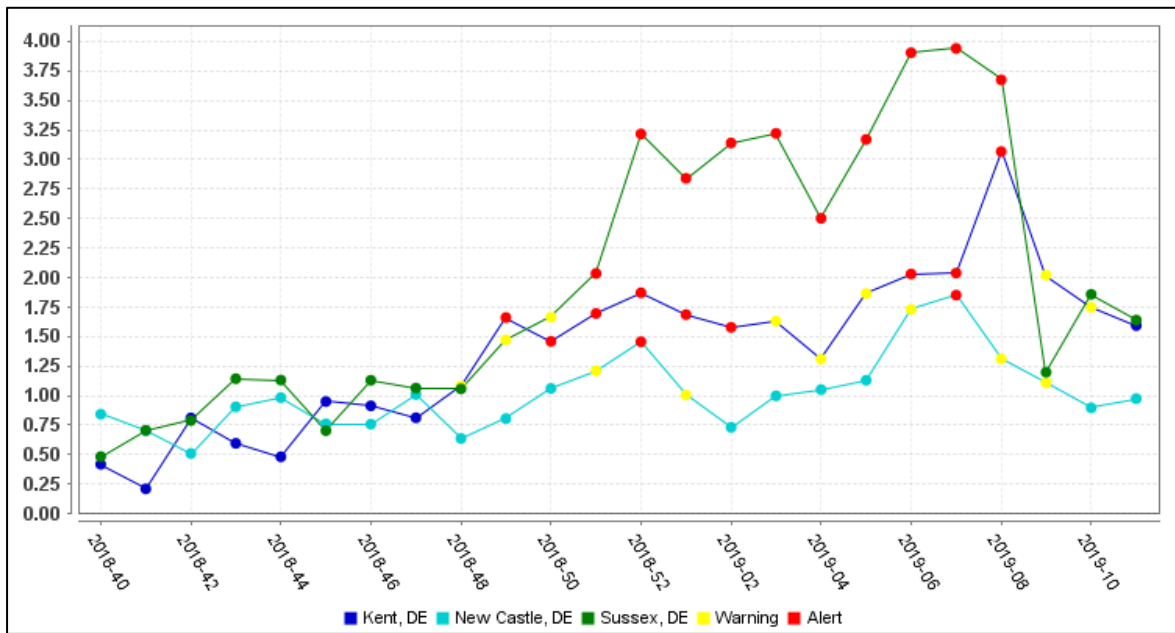
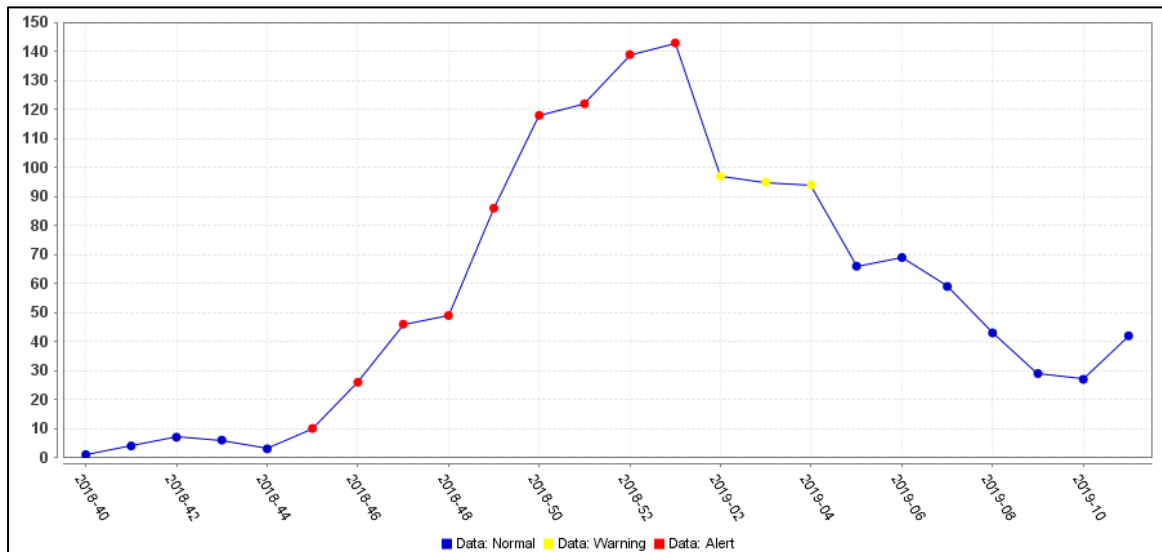
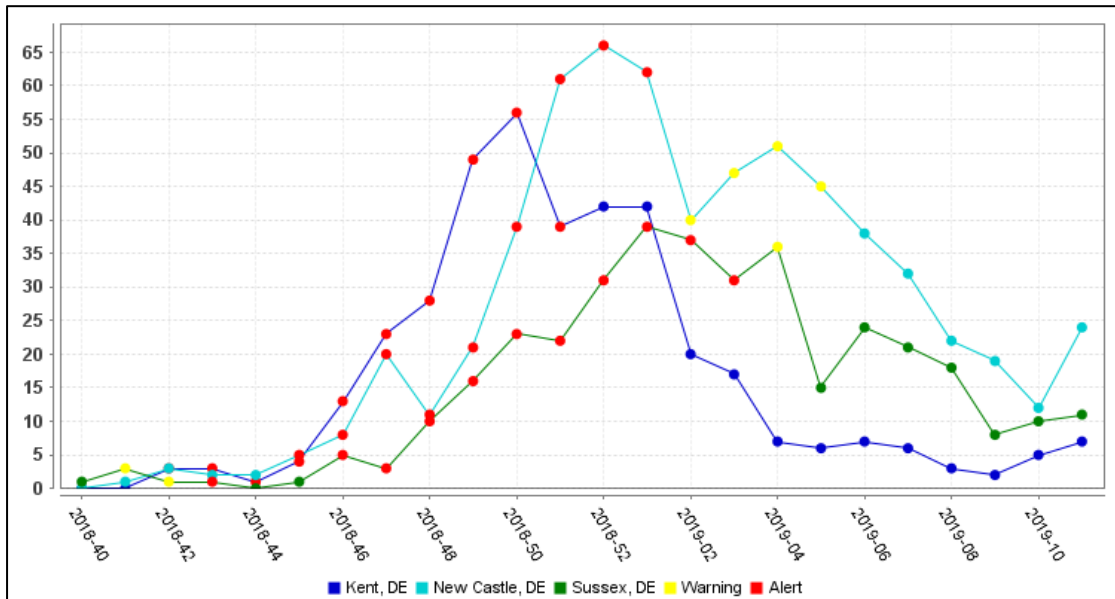


Figure 5a. Number of ED visits due to Respiratory Syncytial Virus (RSV) by MMWR Week, Delaware, 2018-19



**Figure 5b. County-specific numbers of ED visits due to RSV by MMWR Week, Delaware, 2018-19**



**Summary of Worldwide Influenza Activity**

Worldwide, seasonal influenza A viruses accounted for the majority of detections.

In the temperate zone of the northern hemisphere influenza activity continued to be reported. In the temperate zones of the southern hemisphere, influenza activity remained at inter-seasonal levels, with the exception of some parts of Australia where influenza activity remained above inter-seasonal levels.

In North America, influenza activity continued but in recent weeks influenza A(H3N2) was the dominant virus, followed by influenza A(H1N1)pdm09.

In the United States, influenza detections decreased slightly but remained elevated, and influenza detections increased in Canada. Influenza A(H3N2), influenza A(H1N1)pdm09 and influenza B co-circulated. In Mexico, influenza activity continued low and decreasing with a predominance of influenza A(H1N1)pdm09.

In the Caribbean, Central American countries, and the tropical countries of South America, influenza and RSV activity were low in general.

In Europe, influenza activity decreased across the continent, with two thirds of countries still above baseline for influenza-like illness activity. Influenza A viruses co-circulated.

In North Africa, influenza activity was still reported in some countries.

In Western Asia, influenza activity appeared to decrease overall, with exception of some countries where activity remained elevated. In East Asia, influenza activity appeared to decrease overall, with influenza A(H1N1)pdm09 virus predominating. In Southern Asia, influenza activity remained elevated overall with influenza A viruses predominating.

**Reference:** World Health Organization (WHO), 2019. Influenza Update number 337 (3/18/2019). Retrieved 3/22/19 from [http://www.who.int/influenza/surveillance\\_monitoring/updates/latest\\_update\\_GIP\\_surveillance/en/](http://www.who.int/influenza/surveillance_monitoring/updates/latest_update_GIP_surveillance/en/) Reports are updated biweekly.

**NOTE:** Data provided do not reflect the total number of individuals who have been infected with the influenza virus in Delaware during the reporting period due to the following factors:

- Many people ill with influenza-like symptoms do not seek medical care.
- Many who do seek medical care are not tested for influenza.
- The Delaware Public Health Laboratory is limited by capacity to processing a maximum of three specimens per day from each reporting entity.

The Delaware Division of Public Health (DPH) is committed to serving you better by providing the most accurate, up-to-date influenza data available.

- For general information on influenza, visit [flu.delaware.gov](http://flu.delaware.gov) or <http://dhss.delaware.gov/dhss/dph/dpc/immunize-flu.html>.
- For specific information on DPH flu clinics, visit <http://dhss.delaware.gov/dhss/dph/fluclinics.html>.
- For questions on Delaware’s weekly flu report, call the DPH Office of Infectious Disease Epidemiology: 302-744-4990.
- For questions regarding influenza vaccination, please call 302-744-1060.