



## Delaware Weekly Influenza Report

MMWR Week 4 (January 19, 2020- January 25, 2020)

### Delaware Division of Public Health

#### **National Influenza Synopsis 2019-2020:**

National data are updated Friday of each week. Please visit <http://www.cdc.gov/flu/weekly/> for the most current information. Geographic spread of influenza during MMWR Week 1 (January 19, 2020- January 25, 2020) was reported as follows:

- *Sporadic Influenza Activity* was reported in the U.S. Virgin Islands
- *Local Influenza Activity* was reported in the District of Columbia
- *Regional Influenza Activity* was reported in one state (Hawaii)
- *Widespread Influenza Activity* was reported Puerto Rico and 49 states (Alabama, Alaska, Arizona, Arkansas, California, Colorado, Connecticut, Delaware, Florida, Georgia, Idaho, Illinois, Indiana, Iowa, Kansas, Kentucky, Louisiana, Maine, Maryland, Massachusetts, Michigan, Minnesota, Mississippi, Missouri, Montana, Nebraska, Nevada, New Hampshire, New Jersey, New Mexico, New York, North Carolina, North Dakota, Ohio, Oklahoma, Oregon, Pennsylvania, Rhode Island, South Carolina, South Dakota, Tennessee, Texas, Utah, Vermont, Virginia, Washington, West Virginia, Wisconsin, and Wyoming)
- Guam did not report.

#### **Summary of International Influenza Activity:**

- In the temperate zone of the northern hemisphere, respiratory illness indicators and influenza activity continued to increase in most countries.
  - In North America, influenza activity further increased with all seasonal influenza subtypes circulating.
  - In Europe, influenza activity continued to increase across the region and was reported at moderate levels in some countries of Northern Europe.
  - In Central Asia, influenza activity increased with influenza B viruses predominant.
  - In Northern Africa, influenza activity was low overall.
  - In Western Asia, influenza activity remained elevated overall and continued to increase in Iraq, Israel, Jordan, Turkey and Yemen.
  - In East Asia, influenza-like illness (ILI) and influenza activity continued to increase overall.
- In the Caribbean and Central American countries, influenza activity was low overall, except for Mexico where increased detections of influenza A viruses were reported. In tropical South American countries, increased influenza activity was reported from Ecuador and Colombia in recent weeks.
- In tropical Africa, influenza activity was low across reporting countries of Eastern and Western Africa.
- In Southern Asia, influenza activity was low in most reporting countries, but increased in Afghanistan.
- In South East Asia, influenza activity continued to be reported in Lao People's Democratic Republic and Malaysia and increased in Singapore.
- In the temperate zones of the southern hemisphere, influenza activity remained at inter-seasonal levels.
- Worldwide, seasonal influenza A viruses accounted for the majority of detections

**Reference:** World Health Organization (WHO), 2017. Influenza Update number 359 (01/20/2020). Retrieved January 20, 2020, from

[http://www.who.int/influenza/surveillance\\_monitoring/updates/latest\\_update\\_GIP\\_surveillance/en/](http://www.who.int/influenza/surveillance_monitoring/updates/latest_update_GIP_surveillance/en/)

Reports are updated biweekly.

## Delaware Influenza Surveillance 2019-2020:

During MMWR Week 4, there were 527 laboratory-confirmed cases of influenza reported among Delaware Residents. Reports of influenza-like-illness (ILI) received from participating providers, facilities, and institutions in Delaware show ILI is 1.01% compared to Delaware's 2019-2020 baseline of 1.9%. Nationally, 5.7% of visits to a healthcare provider were for ILI, which is an increase from last week, and is still above the 2019-2020 national baseline of 2.4%. All regions remain above their baselines.

### Level of Influenza Activity in Delaware, MMWR Week 4:

<b>Widespread:</b>	Outbreaks of influenza or increases in ILI cases and recent laboratory-confirmed influenza in at least half the regions of the state with recent laboratory evidence of influenza in the state.
Influenza-like illness (ILI) is defined as patients presenting with fever of 100° F or greater, cough and/or sore throat in the absence of a known cause other than influenza.	
CDC Definitions:	
<b>No Activity:</b> No laboratory-confirmed cases of influenza and no reported increase in the number of cases of ILI.	
<b>Sporadic:</b> Small numbers of laboratory-confirmed influenza cases or a single laboratory-confirmed influenza outbreak has been reported, but there is no increase in cases of ILI.	
<b>Local:</b> Outbreaks of influenza or increases in ILI cases and recent laboratory-confirmed influenza in a single region of the state.	
<b>Regional:</b> Outbreaks of influenza or increases in ILI and recent laboratory-confirmed influenza in at least two but less than half the regions of the state with recent laboratory evidence of influenza in those regions. <sup>3</sup>	
<b>Widespread:</b> Outbreaks of influenza or increases in ILI cases and recent laboratory-confirmed influenza in at least half the regions of the state with recent laboratory evidence of influenza in the state.	

<sup>1</sup> 2018-2019 Region 3 (DE, DC, MD, PA, VA and WV) Baseline = 1.9%.

<sup>2</sup> Laboratory-confirmed case = case confirmed by viral culture or PCR.

<sup>3</sup> Region = population under surveillance in a defined geographical subdivision of a state. Regions typically include several counties. Regional does not apply to states with ≤ four counties.

**Summary of Figures for the MMWR Week 4 Report:**

**Table 1:** Influenza Season 2019-2020 – Vaccination Status

**Table 1A:** Comparison of the 2018-2019 MMWR Week 4 and the 2019-2020 MMWR Week 4 Confirmed Influenza Cases Reported Statewide by County and Age Group

**Table 1B:** Comparison of the 2018-2019 MMWR Week 4 and the 2019-2020 MMWR Week 4 Confirmed Influenza Cases Reported Statewide by County and subtype/lineage

**Figure 1:** Confirmed Cases of Influenza by Type and Subtype/Lineage, Delaware 2019-2020 Influenza Season

**Table 2:** Comparison of the 2018-2019 MMWR Week 4 and the 2019-2020 MMWR Week 4 Influenza-related Hospitalizations and Deaths

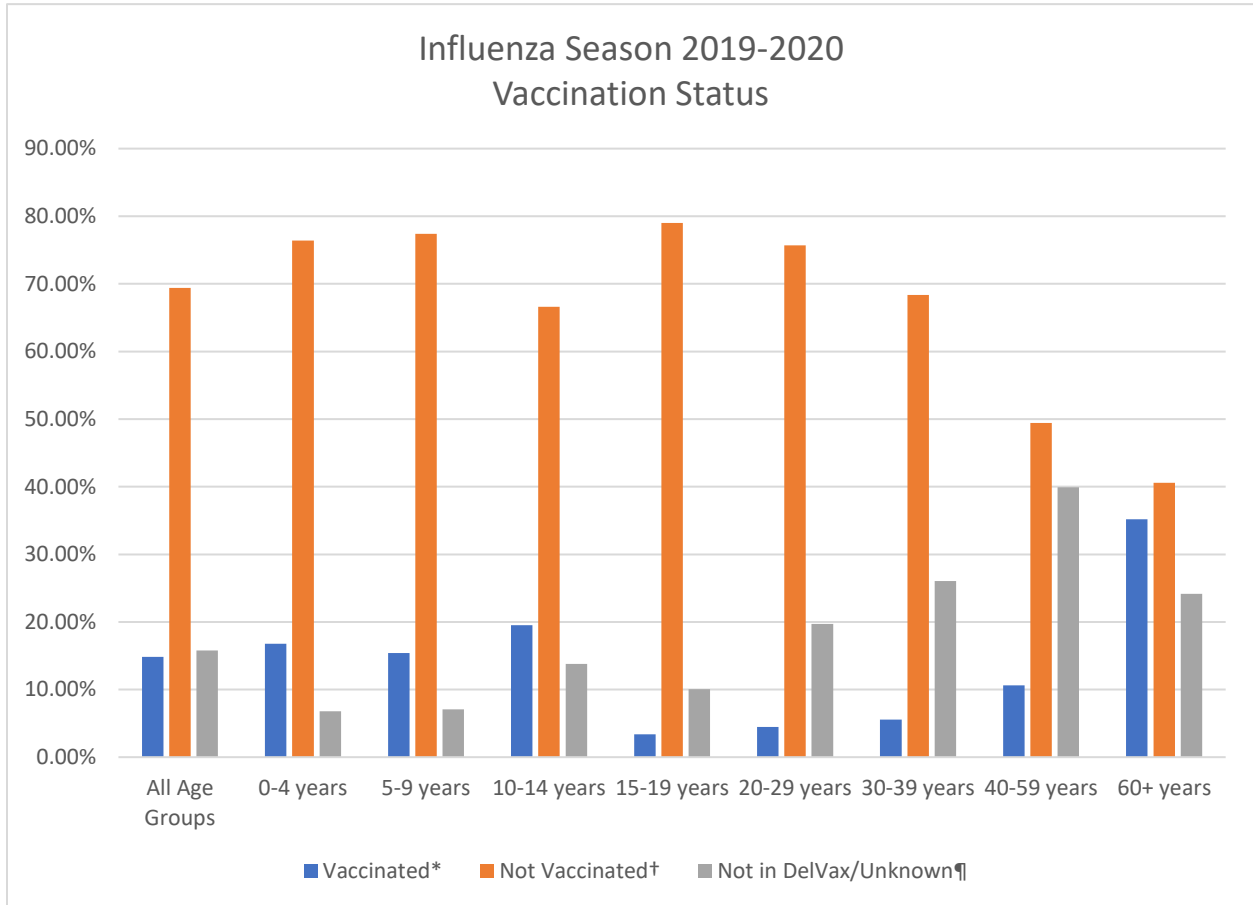
**Table 3:** Annual Number of Influenza Cases Reported by Flu Season, Delaware 2004-05 through 2019-20

**Figure 2:** Percentage of Visits for Influenza-Line Illness Reported by Sentinel Providers participating in the U.S. Outpatient ILI Surveillance Network (ILINet), Delaware 2019-2020

**Figure 3A:** Percentage of Emergency Department (ED) Visits Due to ILI/Influenza by MMWR Week, Delaware 2019-2020

**Figure 3B:** County-Specific Percentage of ED visits Due to ILI/Influenza by MMRW Week, Delaware 2019-2020

**Table 1: Influenza Season 2019-2020 – “Vaccination Status of Confirmed Cases”**



*Received influenza vaccination this season per DelVax
†Not vaccinated for influenza this season per DelVax
¶No record in the Delaware Immunization Registry (DelVax)

**Table 1A:** Comparison of the 2018-2019 MMWR Week 4 and the 2019-2020 MMWR Week 4 Confirmed<sup>1</sup> Influenza Cases Reported Statewide by County and Age Group

Confirmed Flu Cases by Age Group		2018-2019 Influenza Season					2019-2020 Influenza Season				
		Week 4	Total Counts	County Percentage (%)	YTD <sup>2</sup>	YTD County Percentage (%)	Week 4	Total Counts	County Percentage (%)	YTD <sup>2</sup>	YTD County Percentage (%)
STATEWIDE	0-4	77	323	--	1639	--	127	527	--	2943	--
	5-9	46					96				
	10-14	23					50				
	15-19	8					27				
	20-29	26					46				
	30-39	35					53				
	40-59	58					77				
	60+	50					51				
New Castle County	0-4	45	150	46.4	664	40.51	67	234	44.4	1366	46.42
	5-9	20					39				
	10-14	9					19				
	15-19	5					6				
	20-29	11					18				
	30-39	12					18				
	40-59	22					42				
	60+	26					25				
Kent County	0-4	11	64	19.81	435	26.54	21	112	21.25	731	24.84
	5-9	12					21				
	10-14	4					7				
	15-19	0					7				
	20-29	5					12				
	30-39	9					18				
	40-59	14					16				
	60+	9					10				
Sussex County	0-4	21	109	33.75	5400	32.95	39	181	34.34	846	28.75
	5-9	14					36				
	10-14	10					24				
	15-19	3					14				
	20-29	10					16				
	30-39	14					17				
	40-59	22					19				
	60+	15					16				

<sup>1</sup>Influenza Cases are confirmed via PCR testing

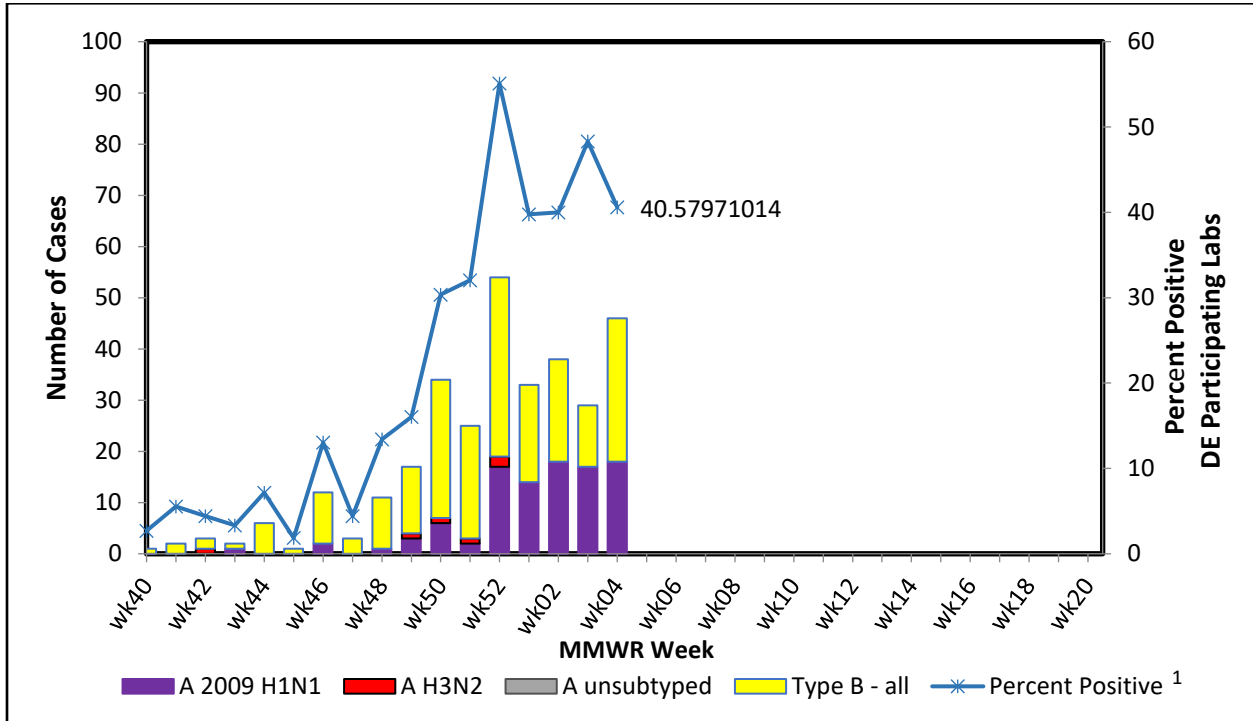
<sup>2</sup>YTD stands for “Year to Date” and represents the cumulative number of cases through the current MMWR Week being assessed for the 2018-19 and 2019-20 influenza seasons, respectively.

**Table 1B:** Comparison of the 2018-2019 MMWR Week 4 and the 2019-2020 MMWR Week 4 Confirmed<sup>1</sup> Influenza Cases Reported Statewide by County and subtype/lineage

Confirmed Flu Cases by Subtype / Lineage		2018-2019 Influenza Season		2019-2020 Influenza Season	
		Week 4	Total Counts	Week 4	Total Counts
STATEWIDE	A / 2009 H1N1	56	323	46	527
	A / 2012 H3N2	7		0	
	A / no subtype	253		251	
	Co-infection	1		2	
	B / Yamagata	0		0	
	B / Victoria	0		13	
	B / no lineage	6		215	
New Castle County	A / 2009 H1N1	39	150	30	234
	A / 2012 H3N2	6		0	
	A / no subtype	104		114	
	Co-infection	1		0	
	B / Yamagata	0		0	
	B / Victoria	0		7	
	B / no lineage	0		83	
Kent County	A / 2009 H1N1	9	64	12	112
	A / 2012 H3N2	0		0	
	A / no subtype	51		51	
	Co-infection <sup>2</sup>	0		1	
	B / Yamagata	0		0	
	B / Victoria	0		1	
	B / no lineage	4		47	
Sussex County	A / 2009 H1N1	8	109	4	181
	A / 2012 H3N2	1		0	
	A / no subtype	98		86	
	Co-infection	0		1	
	B / Yamagata	0		0	
	B / Victoria	0		5	
	B / no lineage	2		85	

<sup>1</sup>Influenza Cases are confirmed via PCR testing

Confirmed Cases of Influenza by Type and Subtype/Lineage, Delaware 2019-2020 Influenza Season



**Figure 1:** During MMWR Week 4 for the 2019-2020 Influenza season, there were 28 confirmed cases of Influenza reported by ILINet providers. Ten were identified as subtype B/Victoria, and eighteen were identified as Flu A/ H1N1. The percent positive for samples tested was 40.57 %.

<sup>1</sup>Percent Positive represents the amount of specimens that tested positive for influenza out of all samples tested for that MMWR week.

**Table 2:** Comparison of the 2018-2019 MMWR Week 4 and the 2019-2020 MMWR Week 4 Influenza-related Hospitalizations and Deaths Statewide

Hospitalizations and Deaths due to Influenza	2018-2019 Influenza Season				2019-2020 Influenza Season			
	Week 4	YTD Totals <sup>1</sup>	Percentage of Confirmed Cases (%) <sup>2</sup>	YTD Percentage of Confirmed Cases (%) <sup>3</sup>	Week 4	YTD Totals <sup>1</sup>	Percentage of Confirmed Case (%) <sup>2</sup>	YTD Percentage of Confirmed Cases (%) <sup>3</sup>
Hospitalizations	67	314	20.74	19.15	24	165	4.55	5.63
Deaths	2	5	.61	.30	1	5	0.18	0.16

<sup>1</sup>YTD stands for “Year to Date” and represents the cumulative number of cases through the current MMWR Week that were hospitalized or died

<sup>2</sup>Percentage of cases confirmed during the single MMWR Week

<sup>3</sup>Percentage of cases for the cumulative count of confirmed cases through the influenza season to the current MMWR Week.

**Table 3:** Annual Number of Influenza Cases Reported by Flu Season, Delaware 2004-05 through 2019-20

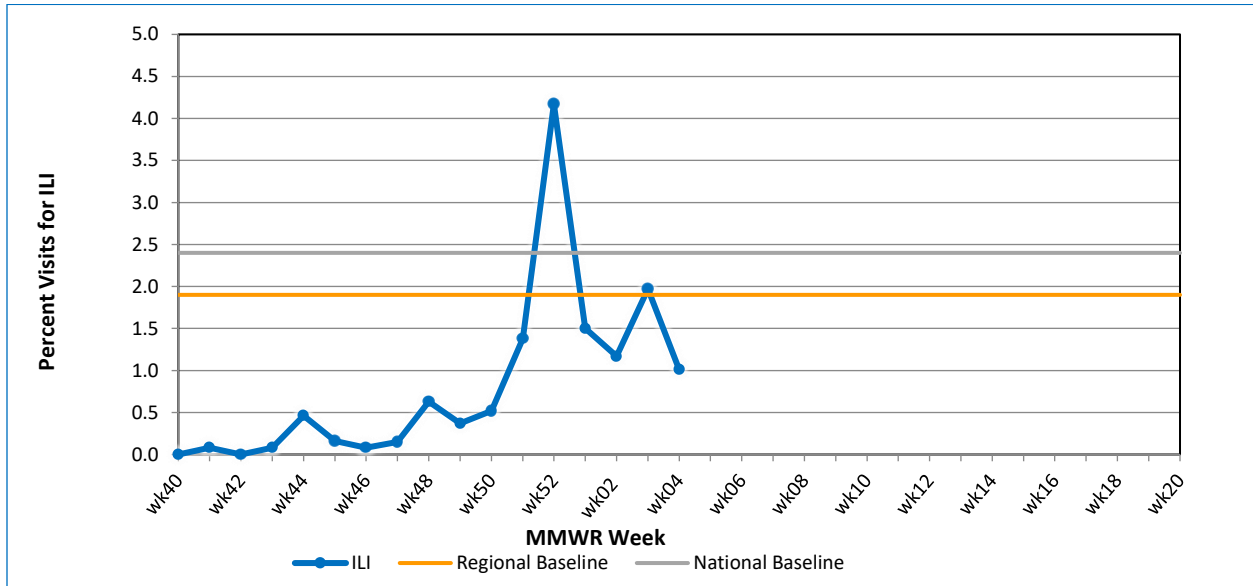
Influenza Season	Total Annual Influenza Cases
2004 – 2005	995
2005 – 2006	541
2006 – 2007	508
2007 – 2008	1,401
2008 – 2009	738
2009 – 2010	2,247
2010 – 2011	1,479
2011 – 2012	267
2012 – 2013	1,781
2013 – 2014	1,842
2014 – 2015	2,390
2015 – 2016	1,842
2016 – 2017	4,590
2017 – 2018	9,050
2018 – 2019	6,387
<b>2019 – 2020 (YTD)</b>	<b>2,943</b>



## U.S. Outpatient Influenza-Like Illness Surveillance Network (ILINet) Sentinel Providers

An ILINet (sentinel) provider conducts surveillance for influenza-like illness (ILI) in collaboration with the Division of Public Health and the Centers for Disease Control and Prevention (CDC). Data reported by ILINet providers, in combination with other influenza surveillance data, provide a national and statewide picture of influenza activity in the U.S.

Percentage of Visits for Influenza-Like Illness Reported by Sentinel Providers<sup>1</sup> participating in the U.S. Outpatient ILI Surveillance Network (ILINet), Delaware 2019-2020



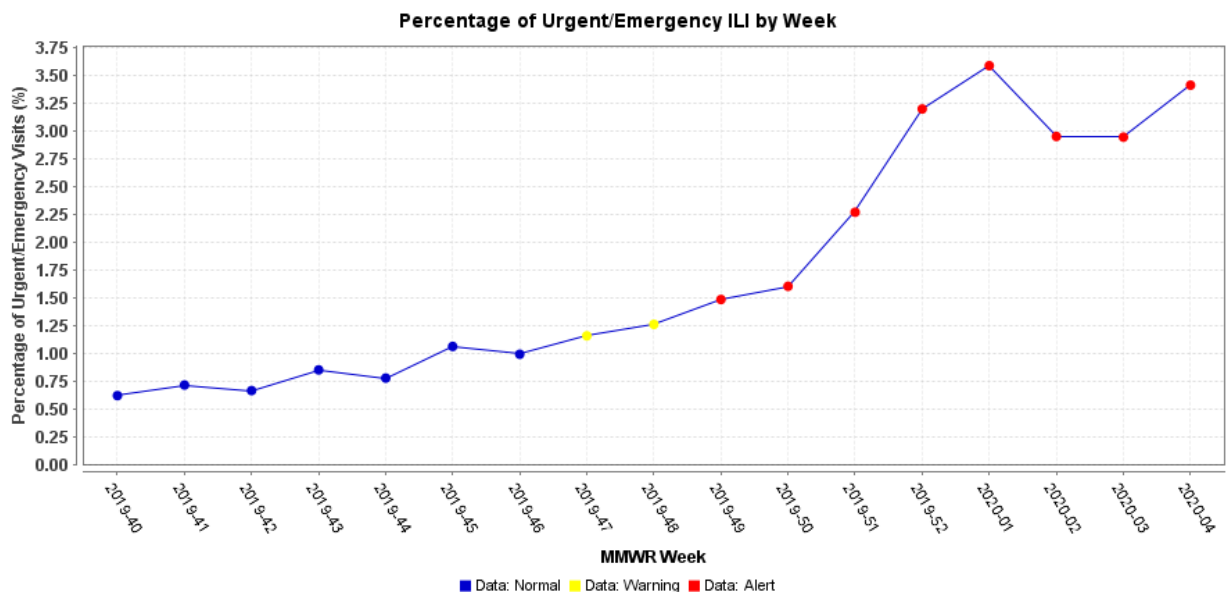
**Figure 2:** Delaware's regional baseline<sup>2</sup> for healthcare visits relating to ILI symptoms in the 2019-2020 Influenza Season is 1.9% and the national baseline<sup>3</sup> is 2.4%. In MMWR Week 4, the amount of ILI related visits reported by sentinel providers decreased from 1.17% to 1.01%.

<sup>1</sup>six of twelve sentinel providers reported

<sup>2</sup>The regional baseline is calculated by the CDC using non-influenza weeks from the previous three influenza seasons. Delaware is in Region 3, which also includes DC, MD, PA, VA, and WV.

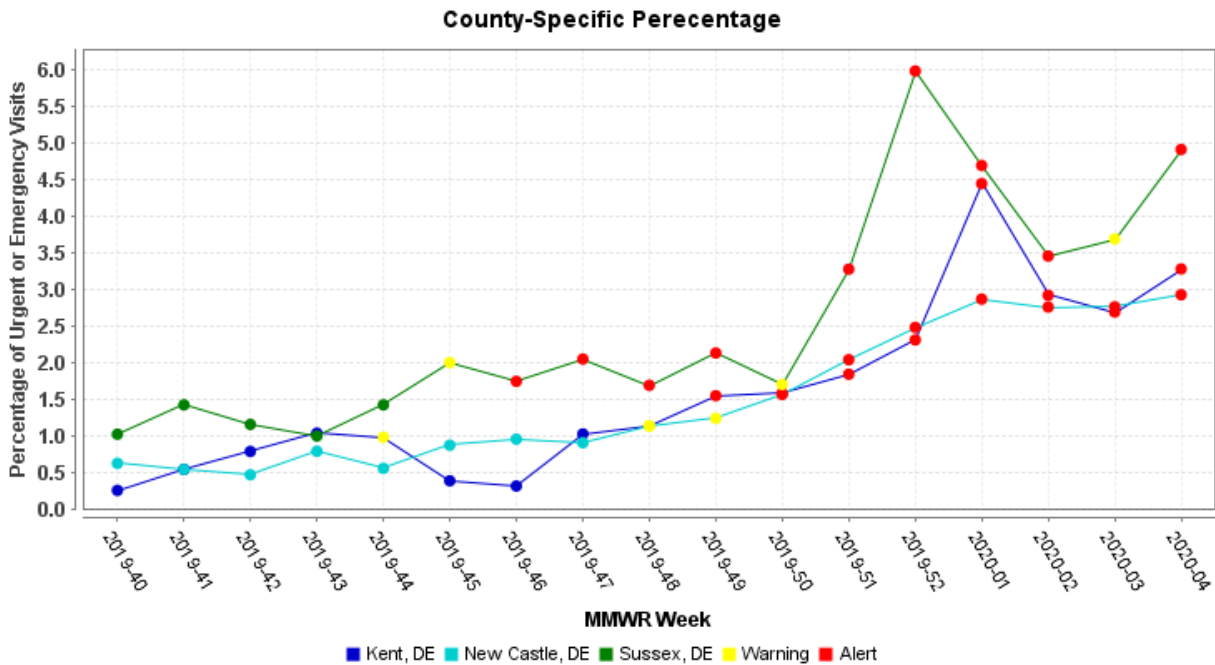
<sup>3</sup>The National baseline is calculated by the CDC using non-influenza weeks from the previous three influenza seasons.

### Percentage of Emergency Care Visits Due to ILI/Influenza by MMWR Week, Delaware 2019-2020



**Figure 3A:** Syndromic data collected from ESSENCE shows that in the weeks preceding the start of the 2019-2020 Influenza season and through MMWR Week 4, there is an increasing trend in the percentage of ED visits due to ILI/Flu symptoms.

County-Specific Percentage of ED visits Due to ILI/Influenza by MMRW Week, Delaware  
2019-2020



**Figure 3B:** Syndromic data collected from ESSENCE shows that in the weeks preceding the start of the 2019-2020 Influenza season and through MMWR Week 4 stratified by Delaware’s three counties.

**NOTE:** Data provided do not reflect the total number of individuals who have been infected with the influenza virus in Delaware during the reporting period due to the following factors:

- Many people ill with influenza-like symptoms do not seek medical care.
- Many who do seek medical care are not tested for influenza.
- The Delaware Public Health Laboratory is limited by capacity to processing a maximum of three specimens per day from each reporting entity.

The Delaware Division of Public Health (DPH) is committed to serving you better by providing the most accurate, up-to-date influenza data available.

- For general information on influenza, visit [flu.delaware.gov](http://flu.delaware.gov) or <http://dhss.delaware.gov/dhss/dph/dpc/immunize-flu.html>.
- For specific information on DPH flu clinics, visit <http://dhss.delaware.gov/dhss/dph/fluclinics.html>.
- For questions on Delaware’s weekly flu report, call the DPH Office of Infectious Disease Epidemiology at 302-744-4990.
- For questions regarding influenza vaccination, please call 302-744-1060.