

DELAWARE VITAL STATISTICS ANNUAL REPORT INFANT MORTALITY, 2012



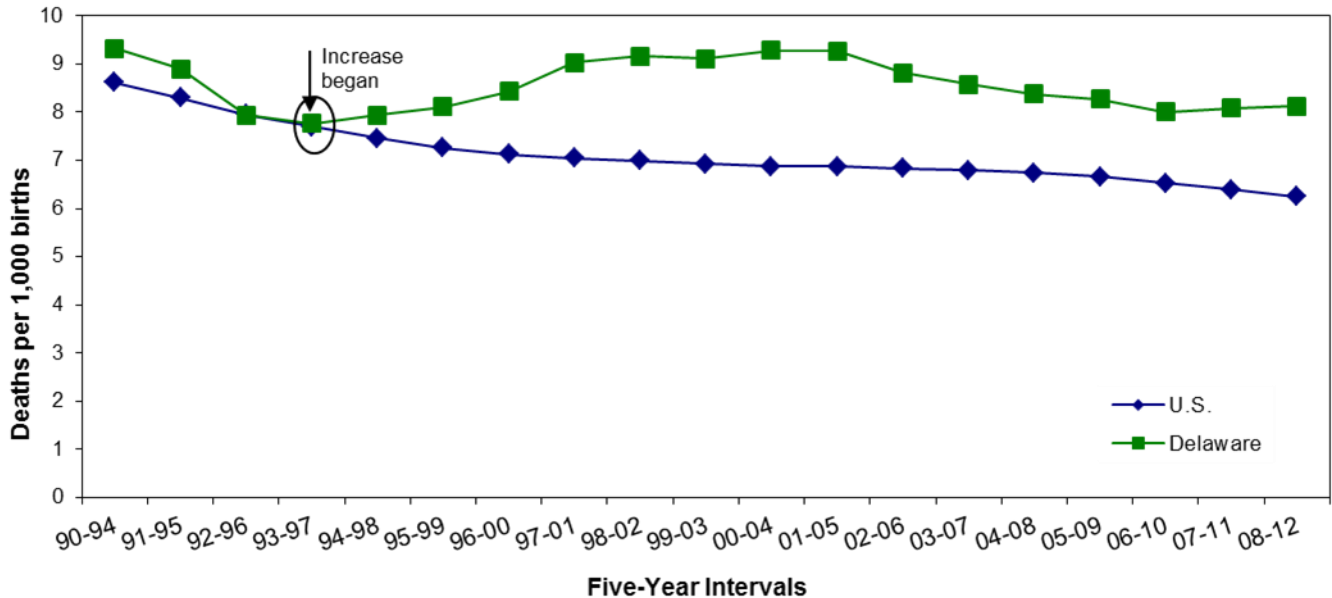
Suggested Citation:

*Delaware Health Statistics Center. Delaware Vital Statistics Annual Report, 2012.
Delaware Department of Health and Social Services, Division of Public Health: 2016.*

INFANT MORTALITY

Between 2007-2011 and 2008-2012, Delaware's infant mortality rate (IMR) remained constant at 8.1 infant deaths per 1,000 live births, maintaining the total decline of 12.9 percent from its 2000-2004 peak of 9.3 infant deaths per 1,000 live births. At 6.2, the U.S. rate remained significantly lower than the Delaware rate.

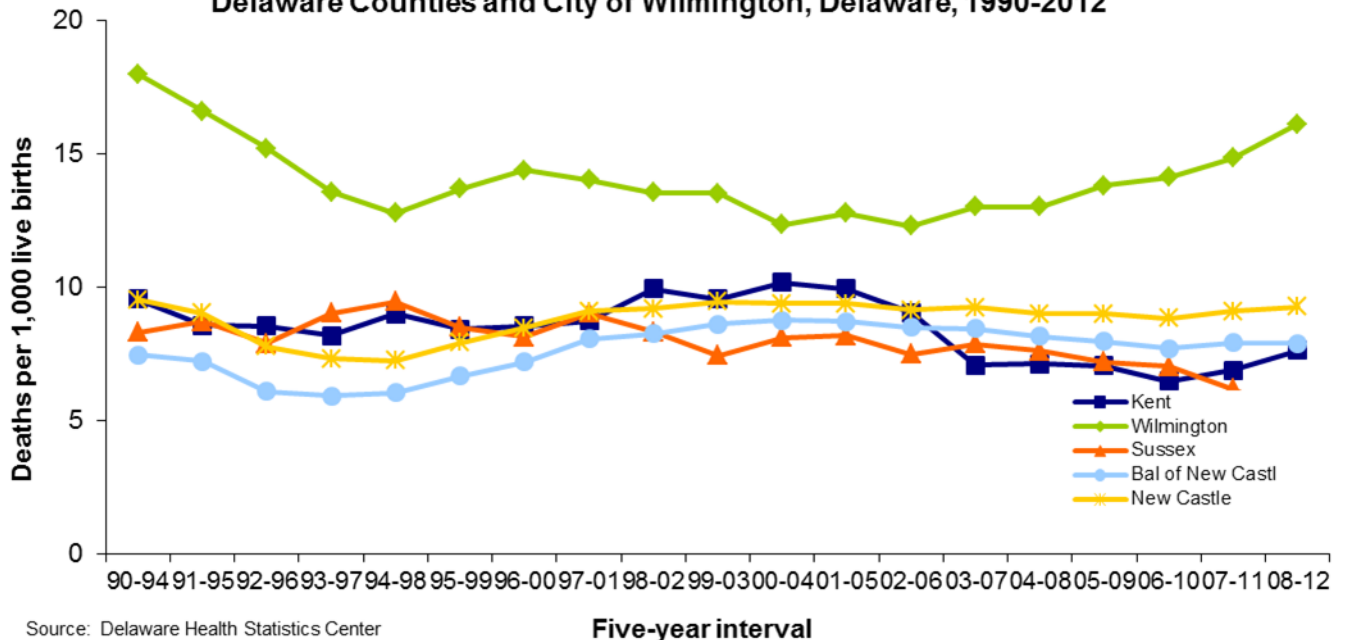
**Five-year Average Infant Mortality Rates
Delaware and U.S., 1990-2012**



Source: Delaware Health Statistics Center

Wilmington's IMR increased for the sixth straight year. The combination of Wilmington's high IMR and a higher IMR in the balance of New Castle County, resulted in New Castle County's IMR being higher than the IMRs of both Kent and Sussex Counties. The decrease in IMR of Sussex from 2007-2011 to 2008-2012 resulted in Sussex's IMR being the lowest. In 2008-2012, the balance of New Castle County's IMR was 7.9, Wilmington's IMR was 16.1, Kent County's IMR was 7.6, and Sussex County's IMR was 5.2.

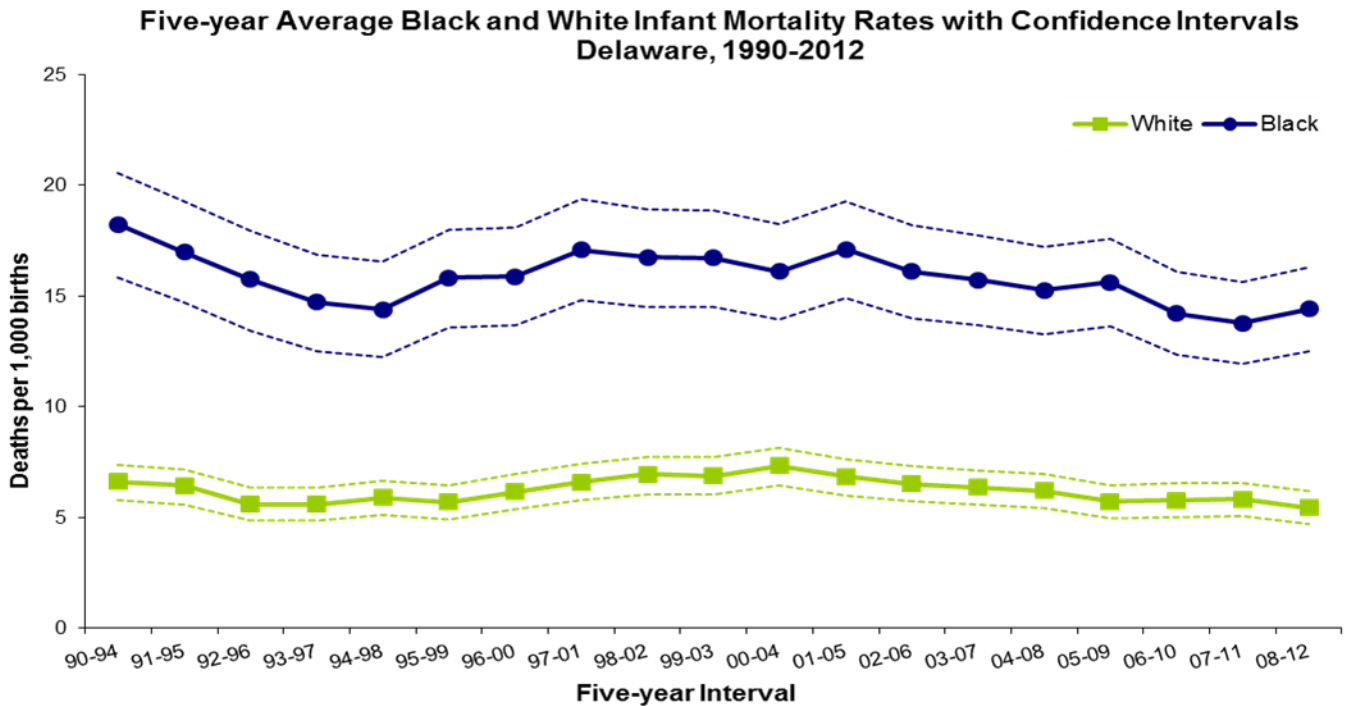
**Five-year Average Infant Mortality Rates
Delaware Counties and City of Wilmington, Delaware, 1990-2012**



Source: Delaware Health Statistics Center

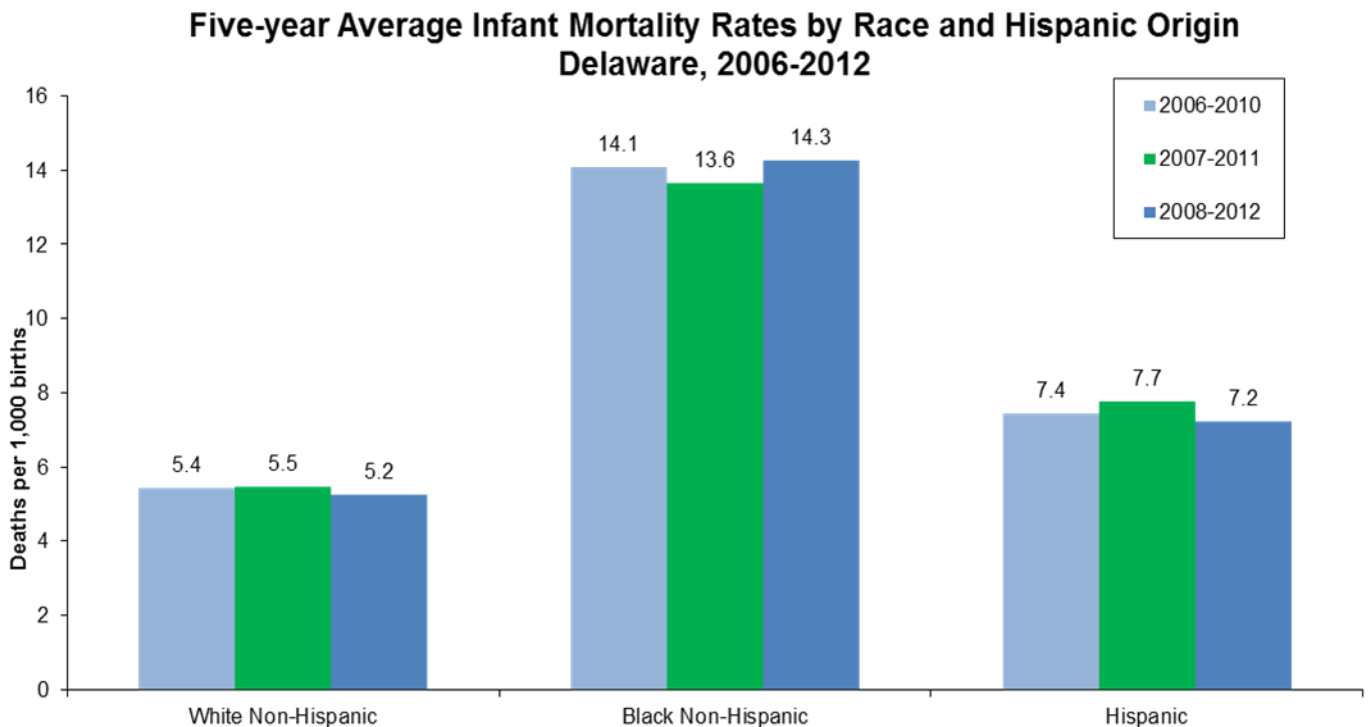
INFANT MORTALITY

Black infants experienced significantly higher mortality rates than white infants, and from 1990-1994 to 2008-2012, black IMRs were anywhere from 2.2 to 2.8 times that of white IMRs.



Source: Delaware Health Statistics Center

Significant disparities existed between black non-Hispanics and each of the two other groups, white non-Hispanics and Hispanics. Black non-Hispanics had the highest IMRs in 2006-2010, 2007-2011, and 2008-2012; and their rate of 14.3 in 2008-2012 was more than double the white non-Hispanic rate of 5.2 and nearly twice the Hispanic rate of 7.2 infant deaths per 1,000 live births.



Source: Delaware Health Statistics Center

INFANT MORTALITY

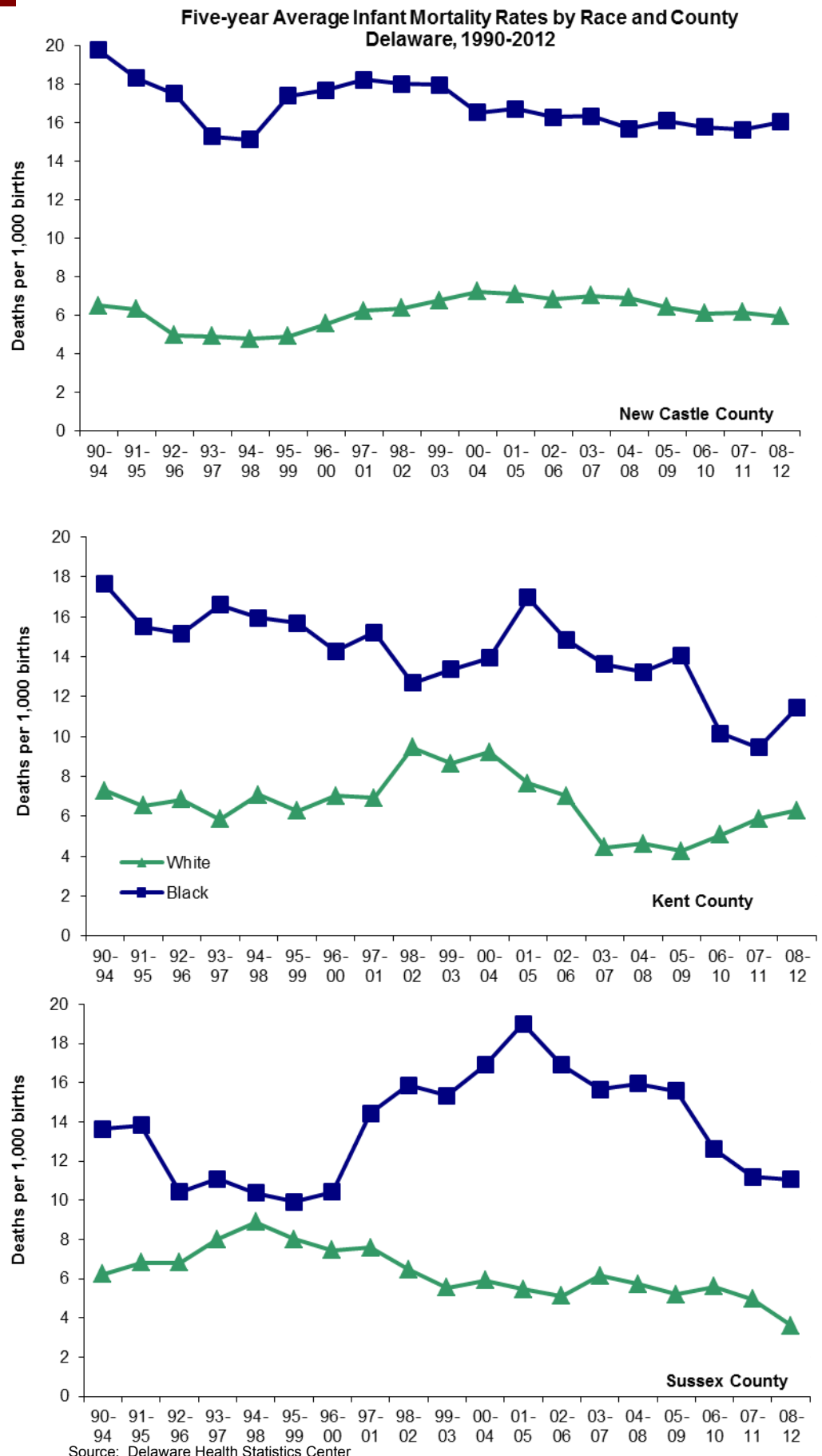
In 2008-2012, New Castle County had the highest IMRs and Sussex County had the lowest.

Black IMRs in New Castle County have hovered around 16 since 2002-2006, and in 2008-2012 the black IMR was 16.1 infant deaths per 1,000 live births. White IMRs decreased slightly to 5.9 from 2007-2011 to 2008-2012.

Black IMRs in Kent County peaked at 17 in 2001-2005; the recent drop in 2007-2011 resulted in a 45 percent reduction in black IMRs between 2001-2005 and 2007-2011.

In 2008-2012, the rate increased by 22.3 percent to 11.5 infant deaths per 1,000 live births. Despite increasing from their 2007-2011 rate, the white IMR in Kent County was 17 percent lower in 2008-2012 than in 2001-2005.

Sussex County's black IMR dropped to 11.1 in 2008-2012, its lowest rate since 1996-2000, and a 42 percent reduction from the 2001-2005 peak of 19. Sussex County's white IMR has fluctuated between five and six since 1999-2003, and in 2008-2012 the rate moved down to 3.6 infant deaths per 1,000 births.



INFANT MORTALITY- Leading Causes of Death

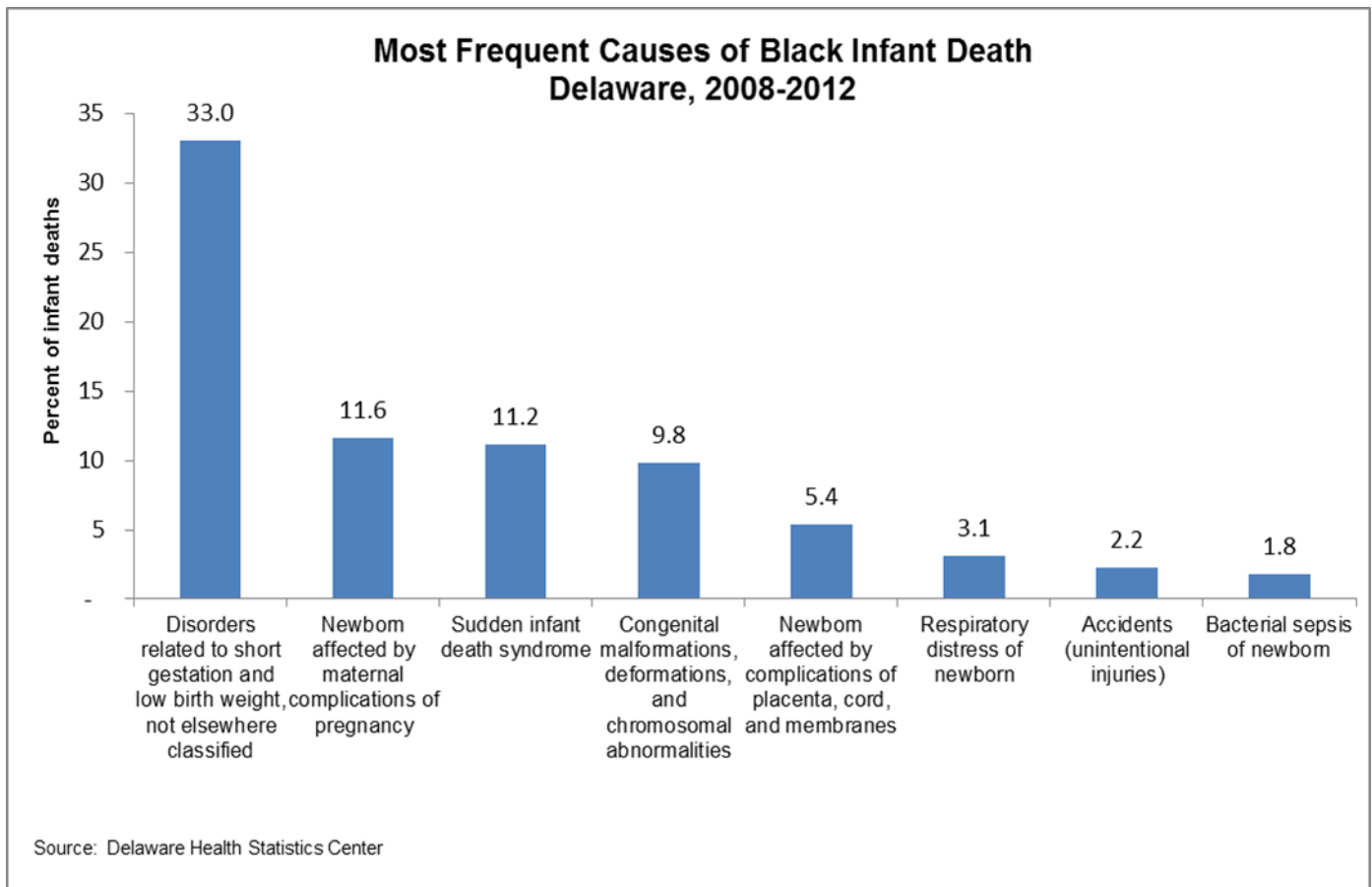
In 2008-2012 the five leading causes of infant death were:

- Disorders related to short gestation and fetal malnutrition (prematurity and low birthweight), which accounted for 24.9 percent of infant deaths.
- Congenital anomalies (birth defects), which accounted for 15.8 percent of infant deaths.
- Sudden infant death syndrome (SIDS), which accounted for 11.0 percent of infant deaths.
- Newborns affected by maternal complications of pregnancy, which accounted for 9.5 percent of infant deaths. Of the 44 deaths attributed to this cause, 39 were due to the newborn being affected by incompetent cervix and premature rupture of membranes.
- Newborn affected by complications of placenta, cord, and membranes (4.8 percent).

In sum, the five most common causes of infant death accounted for 66.0 percent, or 305 of the 462 total infant deaths.

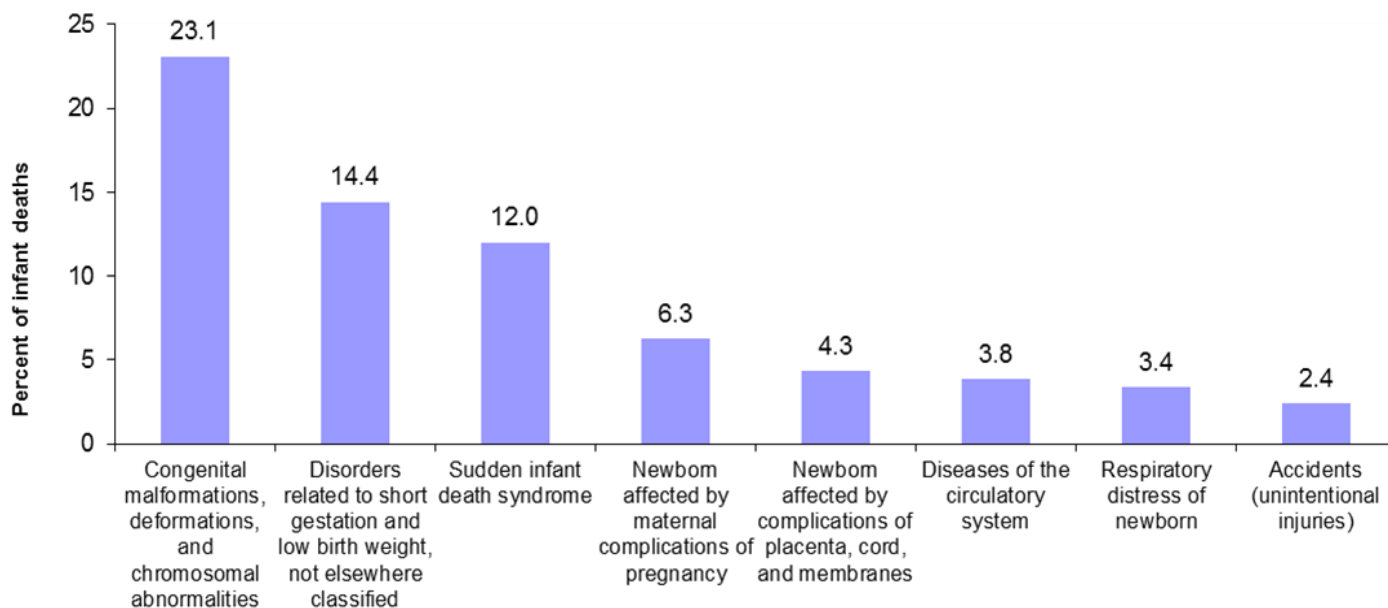
The most frequent causes of death by race are shown in the graphs below and on the following page. SIDS and disorders related to short gestation and low birthweight were listed in the top three most frequent causes of death for both black and white infants.

Though the proportions of deaths by race were similar for many of the causes of death, notable exceptions were birth defects and disorders due to prematurity and low birthweight. While birth defects were responsible for 23.1 percent of all white infant deaths, they accounted for only 9.8 percent of black infant deaths. Conversely, infant deaths due to disorders related to prematurity and low birthweight accounted for larger percentages of black infant deaths than white infant deaths (33.0 versus 14.4 percent).



INFANT MORTALITY- Leading Causes of Death

Most Frequent Causes of White Infant Death Delaware, 2008-2012

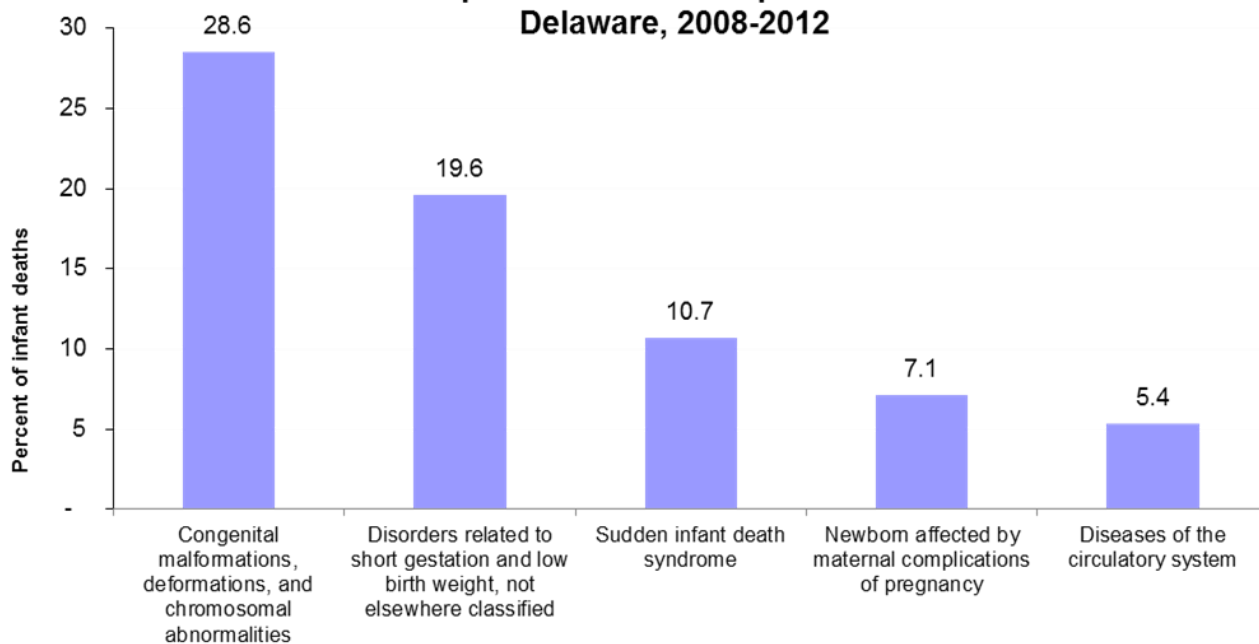


Source: Delaware Health Statistics Center

In 1989-1993, Hispanics accounted for 3.6 percent of all live births and 3.4 percent of infant deaths; since that time the proportion of births to Hispanic mothers have nearly quadrupled. In the most recent five-year period, 2008-2012, 13.6 percent of all live births were to Hispanic mothers, and 12.1 percent of all infant deaths were of Hispanic origin.

Two causes of death accounted for the greatest number of Hispanic infant deaths: birth defects and disorders related to prematurity and low birthweight.

Most Frequent Causes of Hispanic Infant Death Delaware, 2008-2012



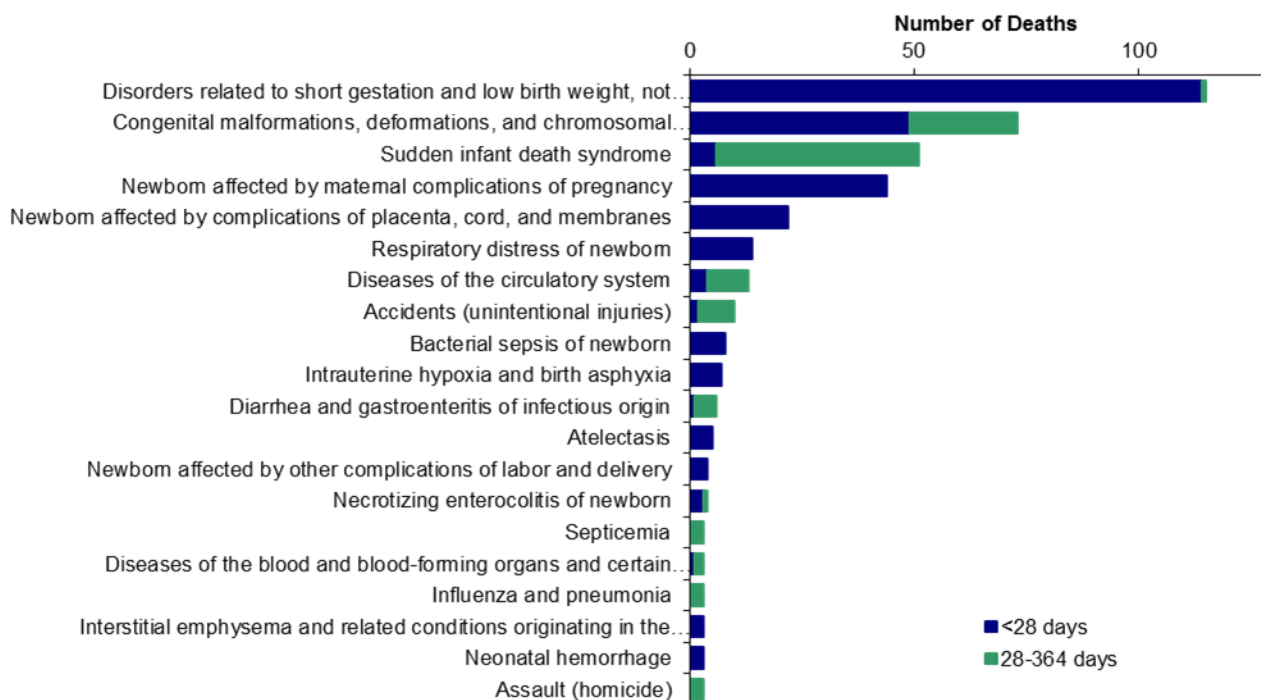
Source: Delaware Health Statistics Center

INFANT MORTALITY - Leading Causes of Death

Approximately 90 percent of all infant deaths occurred within the first six months of life; 71 percent of all infant deaths occurred within the first 28 days of life, and 45 percent occurred within 24 hours of birth.

The graph below displays deaths by specific cause and the infant's age classification at death: neonatal (<28 days), or postneonatal (28-364 days).

**Most Frequent Causes of Infant Death
Delaware, 2008-2012**



Source: Delaware Health Statistics Center

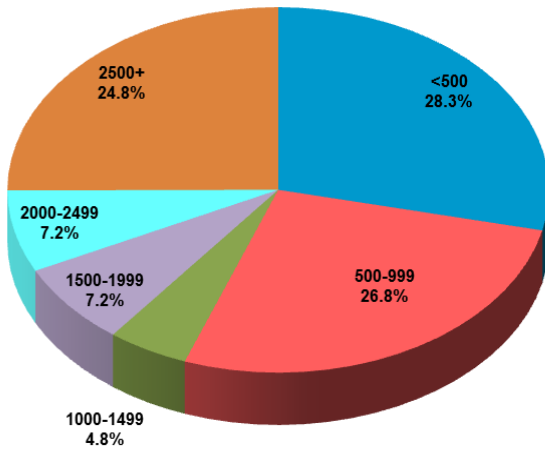
- Prematurity and low birthweight accounted for the greatest number of infant deaths in 2008-2012; all but one of these deaths occurred in the neonatal period.
- Sudden infant death syndrome (SIDS) was the only one of the top five causes of death that had the majority of deaths occurring in the postneonatal period, with a mean age at death of 105 days. Though fewer infants died in 2008-2012 compared to 2007-2011, the same amount of infants died due to SIDS, which remained to be the third leading cause of infant death in 2008-2012.
 - ⇒ 43 percent (22 out of 51) of the SIDS deaths were associated with co-sleeping and/or sleeping on soft surfaces, such as couches and adult beds.
- During that same time period, there were 12 additional infant deaths, coded under a different cause of death, that were associated with co-sleeping and/or sleeping on a soft surface. In total, 7.3 percent of all infant deaths in 2008-2012 were associated with co-sleeping and/or unsafe sleep practices.

INFANT MORTALITY - Live Birth Cohort

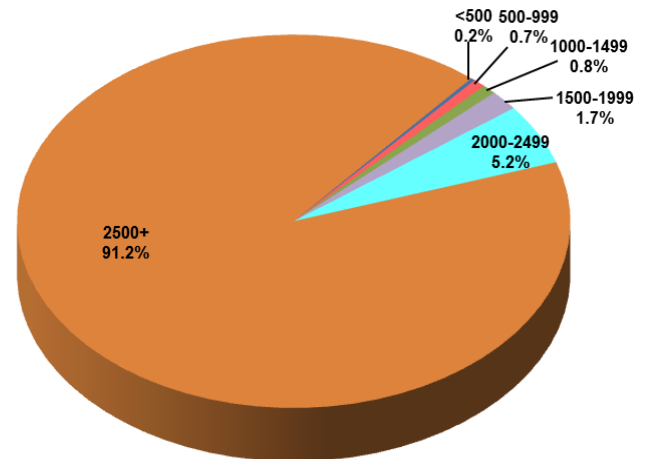
Though only 1 percent of all live births in 2007-2011 were infants weighing less than 1,000 grams, they accounted for over half (55 percent) of all infant deaths. In total, 9 percent of all live births in 2007-2011 were infants of low birthweight (under 2,500 grams) and 74 percent of infant deaths were low birthweight.

Distribution by Birthweight, Delaware Live Birth Cohort, 2007-2011

Infant Deaths



Live Births



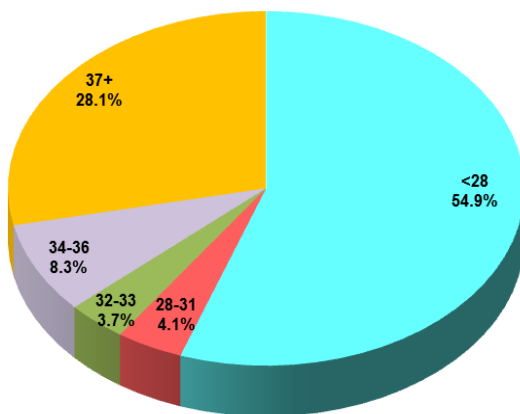
Source: Delaware Health Statistics Center

Gestation and infant death demonstrated the same relationship as birthweight and infant death. Infants born at the youngest gestational age made up a very small percentage of live births, yet they accounted for the majority of infant deaths.

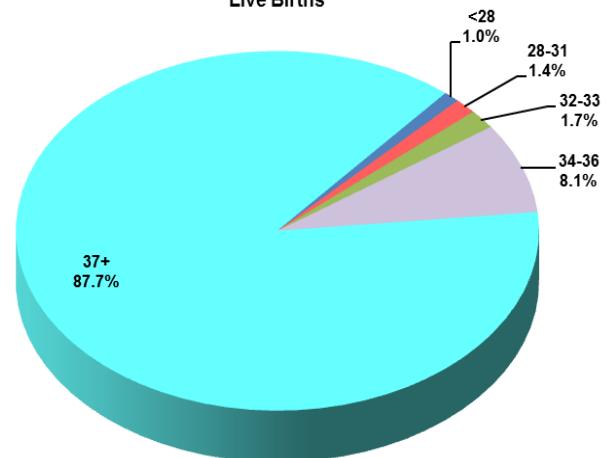
One percent of live births in 2007-2011 were less than 28 weeks gestation at birth, but they accounted for 55 percent of all infant deaths. In total, 12 percent of all live births in 2007-2011 were born preterm (<37 weeks of gestation) and 71 percent of infant deaths were born preterm.

Distribution by Gestation, Delaware Live Birth Cohort, 2007-2011

Infant Deaths



Live Births



Source: Delaware Health Statistics Center

INFANT MORTALITY - Live Birth Cohort

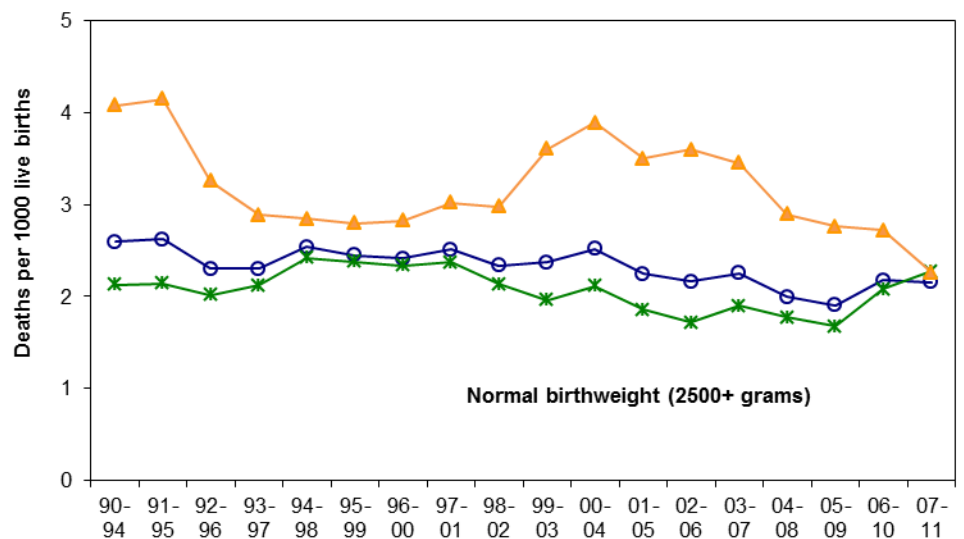
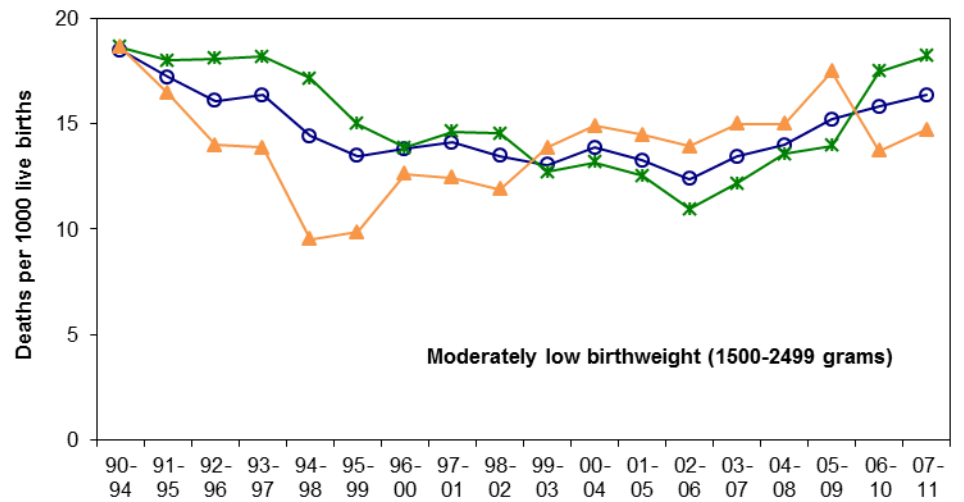
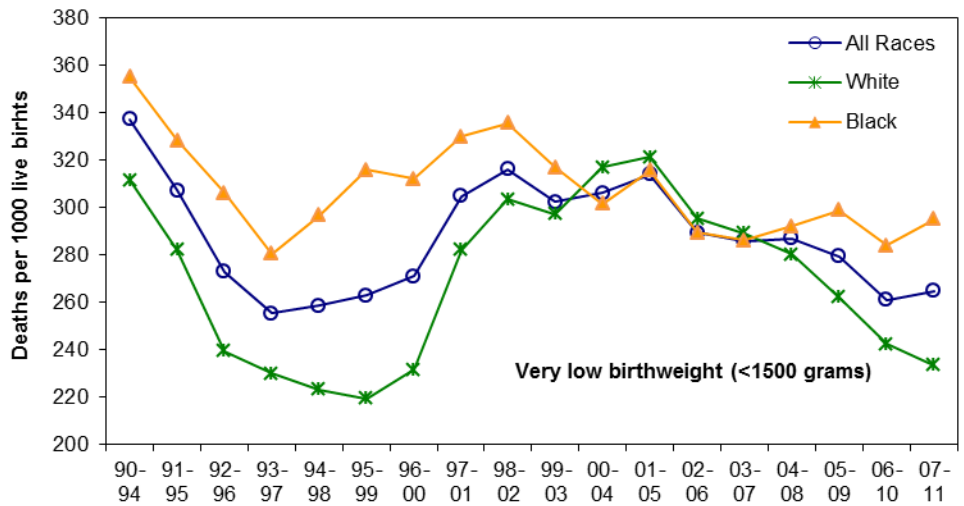
Birthweight and gestation are considered to be the most important predictors of infant health and mortality risk. Infants born too small or too early have a much greater risk of mortality than those who reach a normal birthweight (2500+ grams) or full-term gestation (37+ weeks).

The IMR for very low birthweight (VLBW) black infants increased in 2007-2011 after decreasing since 2005-2009. The IMR for VLBW white infants steadily decreased since 2002-2006. In 2007-2011, IMRs for white and black VLBW infants were 233 and 295 infant deaths per 1,000 live births.

IMRs for moderately LBW infants of all races rose 17 percent between 2000-2004 and 2007-2011. During that time, white IMRs increased 38 percent while the black IMR decreased by only 1 percent. Black IMR rates for 2007-2011 continued to remain lower than the white rates (14.7 vs. 18.2).

The IMR for all races remained the same from 2006-2010 to 2007-2011. IMRs for normal birthweight white infants experienced an increase of 10 percent since 2000-2004. The IMRs for black infants declined 41 percent between 2000-2004 and 2007-2011. The divergent movement in black and white rates in the 2007-2011 period narrowed the black/white disparity ratio. In 2007-2011, the black IMR was equal to the white IMR for normal birthweight infants.

Five-year Average Infant Mortality Rate by Birthweight and Race
Delaware, 1990-2011 Live Birth Cohort

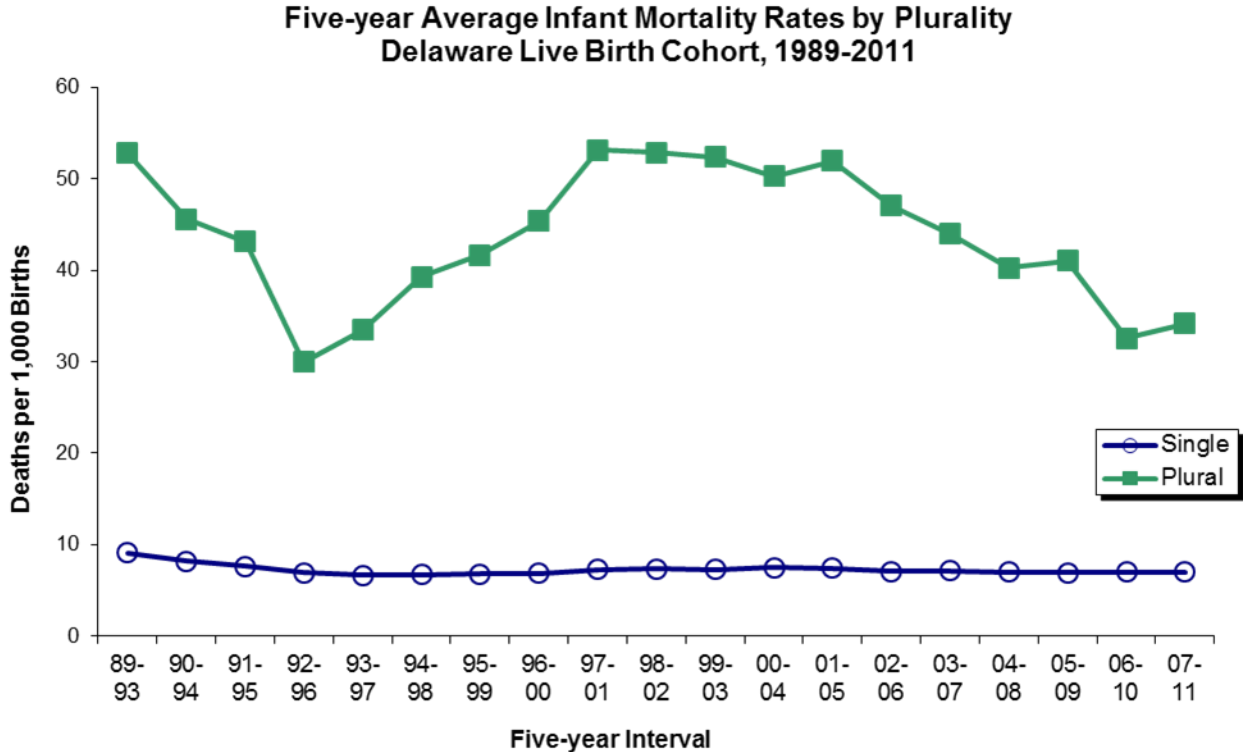


Source: Delaware Health Statistics Center

—○— All Races —*— White —▲— Black

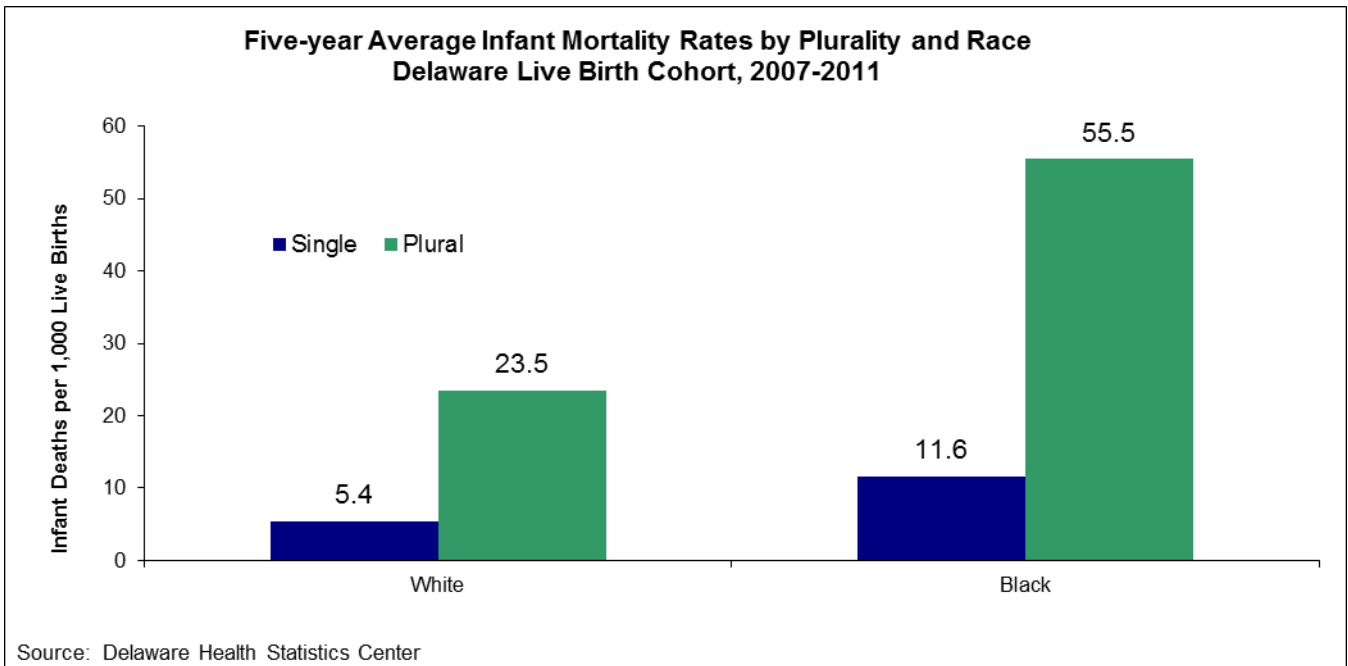
INFANT MORTALITY - Live Birth Cohort

From 1992-1996 to 1997-2001, IMRs for plural births increased 77 percent, to 53.1 deaths per 1,000 live births. During the same time, IMRs for singleton births increased by 4 percent. Since then, plural IMRs decreased 36 percent, with a slight increase (5 percent) occurring in the most recent time period. IMRs for singleton births experienced a slight decrease of 4 percent. In 2007-2011, the infant mortality rate for plural births was 4.9 times that of singleton births (34 versus 7).



Source: Delaware Health Statistics Center

The magnitude of difference between singleton and plural IMRs remained the same regardless of race, though rates for black infants, both singleton and plural, were more than double those of white infants.



Source: Delaware Health Statistics Center

Intentionally left blank

TABLE E-1
NUMBER OF INFANT DEATHS BY RACE

U.S., DELAWARE, COUNTIES AND CITY OF WILMINGTON, 1995-2012

Area/ Race	1995	1996	1997	1998	1999	2000	2001	2002	2003	2004	2005	2006	2007	2008	2009	2010	2011	2012
U.S.																		
All Races	29583	28237	28045	28371	27937	28035	27568	28034	28025	27936	28440	28527	29138	28059	26412	24586	23910*	23654*
White	19490	18749	18539	18561	18067	18144	17955	18369	18440	18231	18514	18403	18807	18164	16817	15954	15438*	15264*
Black	9118	8490	8496	8726	8822	8771	8498	8524	8402	8494	8695	8858	8944	8543	8312	7401	7234*	6896*
Other	975	998	1010	1084	1048	1120	1115	1141	1183	1211	1231	1266	1387	1352	1283	1231	1238*	1494*
Delaware																		
All Races	79	77	81	103	81	102	114	96	107	97	106	99	91	101	91	88	98	84
White	46	43	42	54	31	65	60	57	53	51	48	50	52	49	30	47	48	34
Black	32	32	36	49	49	37	53	35	53	44	55	44	38	52	54	36	38	44
Other	1	2	3	0	1	0	1	4	1	2	3	5	1	0	7	5	12	6
Kent																		
All Races	18	17	14	18	10	21	19	27	16	17	21	13	9	18	18	15	17	17
White	10	11	4	13	4	16	10	22	8	8	6	7	4	10	6	12	13	7
Black	7	6	10	5	6	5	9	5	8	8	14	5	4	8	12	3	3	10
Other	1	0	0	0	0	0	0	0	0	1	1	1	1	0	0	0	1	0
New Castle																		
All Races	45	48	48	65	61	67	72	55	78	60	68	68	60	70	57	58	74	58
White	24	21	26	27	22	40	37	30	37	33	35	31	33	32	18	24	29	24
Black	21	26	20	38	38	27	35	22	40	27	31	35	27	38	34	30	34	28
Other	0	1	2	0	1	0	0	3	1	0	2	2	0	0	5	4	11	6
Wilmington																		
All Races	11	19	14	18	20	16	17	12	18	12	18	16	17	19	18	18	17	20
White	2	1	4	2	4	4	2	2	4	4	3	2	3	7	0	4	2	8
Black	9	18	10	16	16	12	15	10	14	8	15	14	14	12	16	13	15	11
Other	0	0	0	0	0	0	0	0	0	0	0	0	0	0	2	1	0	1
Balance of NC County																		
All Races	34	29	34	47	41	51	55	43	60	48	50	52	43	51	39	40	57	38
White	22	20	22	25	18	36	35	28	33	29	32	29	30	25	18	20	27	16
Black	12	8	10	22	22	15	20	12	26	19	16	21	13	26	18	17	19	17
Other	0	1	2	0	1	0	0	3	1	0	2	2	0	0	3	3	11	5
Sussex																		
All Races	16	12	19	20	10	14	23	14	13	20	17	18	22	13	16	15	7	9
White	12	11	12	14	5	9	13	5	8	10	7	12	15	7	6	11	6	3
Black	4	0	6	6	5	5	9	8	5	9	10	4	7	6	8	3	1	6
Other	0	1	1	0	0	0	1	1	0	1	0	2	0	0	2	1	0	0

Notes:

1. *Based on NCHS estimate.
2. Infant deaths refer to deaths to children under one year of age.

Sources:

National Center for Health Statistics
Delaware Health Statistics Center

INFANT1

TABLE E-2
NUMBER OF NEONATAL DEATHS BY RACE

U.S., DELAWARE, COUNTIES AND CITY OF WILMINGTON, 1995-2012

Area/ Race	1995	1996	1997	1998	1999	2000	2001	2002	2003	2004	2005	2006	2007	2008	2009	2010	2011	2012
U.S.																		
All Races	19155	18326	18524	18918	18728	18776	18265	18749	18893	18593	18770	18989	19058	18211	17255	16188	15954*	15886*
White	12644	12252	12269	12406	12164	12201	12013	12354	12495	12238	12239	12302	12333	11843	11054	10612	10422*	10267*
Black	5940	5483	5637	5824	5920	5843	5585	5646	5640	5495	5740	5876	5842	5523	5374	4769	4719*	4610*
Other	571	591	618	688	644	732	667	749	758	860	791	811	883	845	827	807	813*	1009*
Delaware																		
All Races	47	53	55	74	58	71	82	79	75	63	79	72	65	68	66	58	73	66
White	26	28	26	33	21	45	44	48	36	33	36	36	37	32	19	27	30	25
Black	20	24	27	41	37	26	37	28	38	28	40	33	28	36	40	26	35	35
Other	1	1	2	0	0	0	1	3	1	2	3	3	0	0	7	5	8	6
Kent																		
All Races	10	13	10	9	8	15	15	22	8	11	14	7	6	12	14	11	13	12
White	6	7	1	6	3	11	10	18	3	5	3	4	3	7	4	9	9	4
Black	3	6	9	3	5	4	5	4	5	5	10	3	3	5	10	2	3	8
Other	1	0	0	0	0	0	0	0	0	1	1	0	0	0	0	0	1	0
New Castle																		
All Races	26	33	33	47	44	50	54	47	56	39	54	52	43	48	42	36	57	47
White	12	14	19	15	14	29	27	26	27	21	28	22	23	20	13	9	18	20
Black	14	18	13	32	30	21	27	19	28	18	24	28	20	28	24	23	32	21
Other	0	1	1	0	0	0	0	2	1	0	2	2	0	0	5	4	7	6
Wilmington																		
All Races	6	14	6	12	14	13	14	9	10	9	15	12	10	10	14	10	14	18
White	0	1	3	1	2	4	1	1	1	3	3	1	1	3	0	0	1	8
Black	6	13	3	11	12	9	13	8	9	6	12	11	9	7	12	9	13	9
Other	0	0	0	0	0	0	0	0	0	0	0	0	0	0	2	1	0	1
Balance of NC County																		
All Races	20	19	27	35	30	37	40	38	46	30	39	40	33	38	28	26	43	29
White	12	13	16	14	12	25	26	25	26	18	25	21	22	17	13	9	17	12
Black	8	5	10	21	18	12	14	11	19	12	12	17	11	21	12	14	19	12
Other	0	1	1	0	0	0	0	2	1	0	2	2	0	0	3	3	7	5
Sussex																		
All Races	11	7	12	18	6	6	13	10	11	13	11	13	16	8	10	11	3	7
White	8	7	6	12	4	5	7	4	6	7	5	10	11	5	2	9	3	1
Black	3	0	5	6	2	1	5	5	5	5	6	2	5	3	6	1	0	6
Other	0	0	1	0	0	0	1	1	0	1	0	1	0	0	2	1	0	0

Notes:

- *Based on NCHS estimate.
- Neonatal deaths refer to deaths of children under 28 days of age.

Sources:

National Center for Health Statistics

INFANT2

TABLE E-3
NUMBER OF POSTNEONATAL DEATHS BY RACE

U.S., DELAWARE, COUNTIES AND CITY OF WILMINGTON, 1995-2012

Area/ Race	1995	1996	1997	1998	1999	2000	2001	2002	2003	2004	2005	2006	2007	2008	2009	2010	2011	2012
U.S.																		
All Races	10428	9911	9521	9453	9209	9259	9303	9285	9132	9343	9670	9538	10080	9848	9157	8398	7956*	7768*
White	6846	6497	6270	6155	5903	5943	5942	6015	5945	5993	6275	6101	6474	6321	5763	5342	5016*	4997*
Black	3178	3007	2859	2902	2902	2928	2913	2878	2762	2999	2955	2982	3102	3020	2938	2632	2515*	2286*
Other	404	407	392	396	404	388	448	392	425	351	440	455	504	507	456	424	425*	485*
Delaware																		
All Races	32	24	26	29	23	31	32	17	32	34	27	27	26	33	25	30	25	18
White	20	15	16	21	10	20	16	9	17	18	12	14	15	17	11	20	18	9
Black	12	8	9	8	12	11	16	7	15	16	15	11	10	16	14	10	3	9
Other	0	1	1	0	1	0	0	1	0	0	0	2	1	0	0	0	4	0
Kent																		
All Races	8	4	4	9	2	6	4	5	8	6	7	6	3	6	4	4	4	5
White	4	4	3	7	1	5	0	4	5	3	3	3	1	3	2	3	4	3
Black	4	0	1	2	1	1	4	1	3	3	4	2	1	3	2	1	0	2
Other	0	0	0	0	0	0	0	0	0	0	0	1	1	0	0	0	0	0
New Castle																		
All Races	19	15	15	18	17	17	18	8	22	21	14	16	17	22	15	22	17	11
White	12	7	7	12	8	11	10	4	10	12	7	9	10	12	5	15	11	4
Black	7	8	7	6	8	6	8	3	12	9	7	7	7	10	10	7	2	7
Other	0	0	1	0	1	0	0	1	0	0	0	0	0	0	0	0	4	0
Wilmington																		
All Races	5	5	8	6	6	3	3	3	8	3	3	4	7	9	4	8	3	2
White	2	0	1	1	2	0	1	1	3	1	0	1	2	4	0	4	1	0
Black	3	5	7	5	4	3	2	2	5	2	3	3	5	5	4	4	2	2
Other	0	0	0	0	0	0	0	0	0	0	0	0	0	0	0	0	0	0
Balance of NC County																		
All Races	14	10	7	12	11	14	15	5	14	18	11	12	10	13	11	14	14	9
White	10	7	6	11	6	11	9	3	7	11	7	8	8	8	5	11	10	4
Black	4	3	0	1	4	3	6	1	7	7	4	4	2	5	6	3	0	5
Other	0	0	1	0	1	0	0	1	0	0	0	0	0	0	0	4	4	0
Sussex																		
All Races	5	5	7	2	4	8	10	4	2	7	6	5	6	5	6	4	4	2
White	4	4	6	2	1	4	6	1	2	3	2	2	4	2	4	2	3	2
Black	1	0	1	0	3	4	4	3	0	4	4	2	2	3	2	2	1	0
Other	0	1	0	0	0	0	0	0	0	0	0	1	0	0	0	0	0	0

Notes:

1. *Based on NCHS estimate.
2. Postneonatal deaths refer to deaths of children 28 to 364 days of age.

Sources:

National Center for Health Statistics
Delaware Health Statistics Center

INFANT3

TABLE E- 4
FIVE-YEAR AVERAGE INFANT MORTALITY RATES BY RACE
U.S., DELAWARE, COUNTIES AND CITY OF WILMINGTON, 1992-2012

Area/ Race	1992 -1996	1993 -1997	1994 -1998	1995 -1999	1996 -2000	1997 -2001	1998 -2002	1999 -2003	2000 -2004	2001 -2005	2002 -2006	2003 -2007	2004 -2008	2005 -2009	2006 -2010	2007 -2011	2008 -2012
U.S.																	
All Races	8.0	7.7	7.5	7.3	7.1	7.0	7.0	6.9	6.9	6.9	6.8	6.8	6.7	6.7	6.5	6.4	6.2
White	6.5	6.4	6.2	6.0	5.9	5.8	5.8	5.7	5.7	5.7	5.7	5.7	5.6	5.6	5.5	5.4	5.3
Black	15.8	15.3	14.8	14.6	14.4	14.2	14.3	14.2	14.0	14.0	13.8	13.6	13.3	13.1	12.7	12.4	11.9
Delaware																	
All Races	7.9	7.8	7.9	8.1+	8.4+	9.0+	9.2+	9.1+	9.3+	9.3+	8.8+	8.6+	8.4+	8.3+	8.0+	8.1+	8.1+
White	5.6-	5.6	5.9	5.7	6.2	6.6	6.9+	6.9+	7.3+	6.9+	6.5+	6.4	6.2	5.7	5.8	5.8	5.5
Black	15.8	14.7	14.4	15.8	15.9	17.1+	16.7+	16.7+	16.1	17.1+	16.1+	15.7+	15.3	15.6+	14.2	13.8	14.4+
Kent																	
All Races	8.6	8.2	9.0	8.4	8.6	8.7	9.9	9.5	10.2	10.0	9.1	7.1	7.1	7.1	6.5	6.9	7.6
White	6.8	5.8	7.1	6.3	7.0	6.9	9.5	8.6	9.2	7.6	7.0	4.4	4.6	4.3	5.1	5.9	6.3
Black	15.2	16.6	15.9	15.7	14.3	15.2	12.7	13.4	13.9	17.0	14.9	13.6	13.2	14.0	10.2	9.4	11.5
New Castle																	
All Races	7.8	7.3	7.3	7.9	8.5	9.1	9.2	9.5	9.4	9.4	9.2	9.2	9.0	9.0	8.8	9.1	9.3
White	5.0	4.9	4.8	4.9	5.6	6.2	6.4	6.8	7.3	7.1	6.8	7.0	6.9	6.4	6.1	6.2	5.9
Black	17.5	15.3	15.1	17.4	17.7	18.2	18.0	18.0	16.5	16.7	16.3	16.3	15.7	16.1	15.8	15.6	16.1
Wilmington																	
All Races	15.2	13.6	12.8	13.7	14.4	14.0	13.5	13.5	12.4	12.8	12.3	13.0	13.0	13.8	14.1	14.8	16.1
White	---	---	---	---	---	---	---	---	---	---	---	---	---	---	---	---	9.8
Black	20.5	17.8	16.8	18.0	18.7	18.0	17.9	17.6	15.9	17.0	16.3	17.3	16.3	18.0	18.0	19.1	19.3
Balance of NC County																	
All Races	6.1	5.9	6.0	6.7	7.2	8.1	8.3	8.6	8.8	8.7	8.5	8.5	8.2	8.0	7.7	7.9	7.9
White	4.8	4.8	4.7	4.8	5.4	6.1	6.4	6.8	7.3	7.2	6.9	7.0	6.8	6.4	6.0	6.0	5.5
Black	14.4	12.9	13.6	16.8	16.8	18.5	18.1	18.2	17.0	16.6	16.3	15.8	15.3	14.9	14.5	13.8	14.4
Sussex																	
All Races	7.9	9.0	9.5	8.5	8.1	9.0	8.3	7.4	8.1	8.2	7.5	7.9	7.6	7.2	7.0	6.2	5.2
White	6.8	8.0	8.9	8.0	7.5	7.6	6.5	5.5	5.9	5.5	5.1	6.2	5.7	5.2	5.6	5.0	3.6
Black	10.4	11.1	10.4	9.9	10.4	14.4	15.9	15.4	16.9	19.0	16.9	15.7	16.0	15.6	12.6	11.2	11.1

Notes:

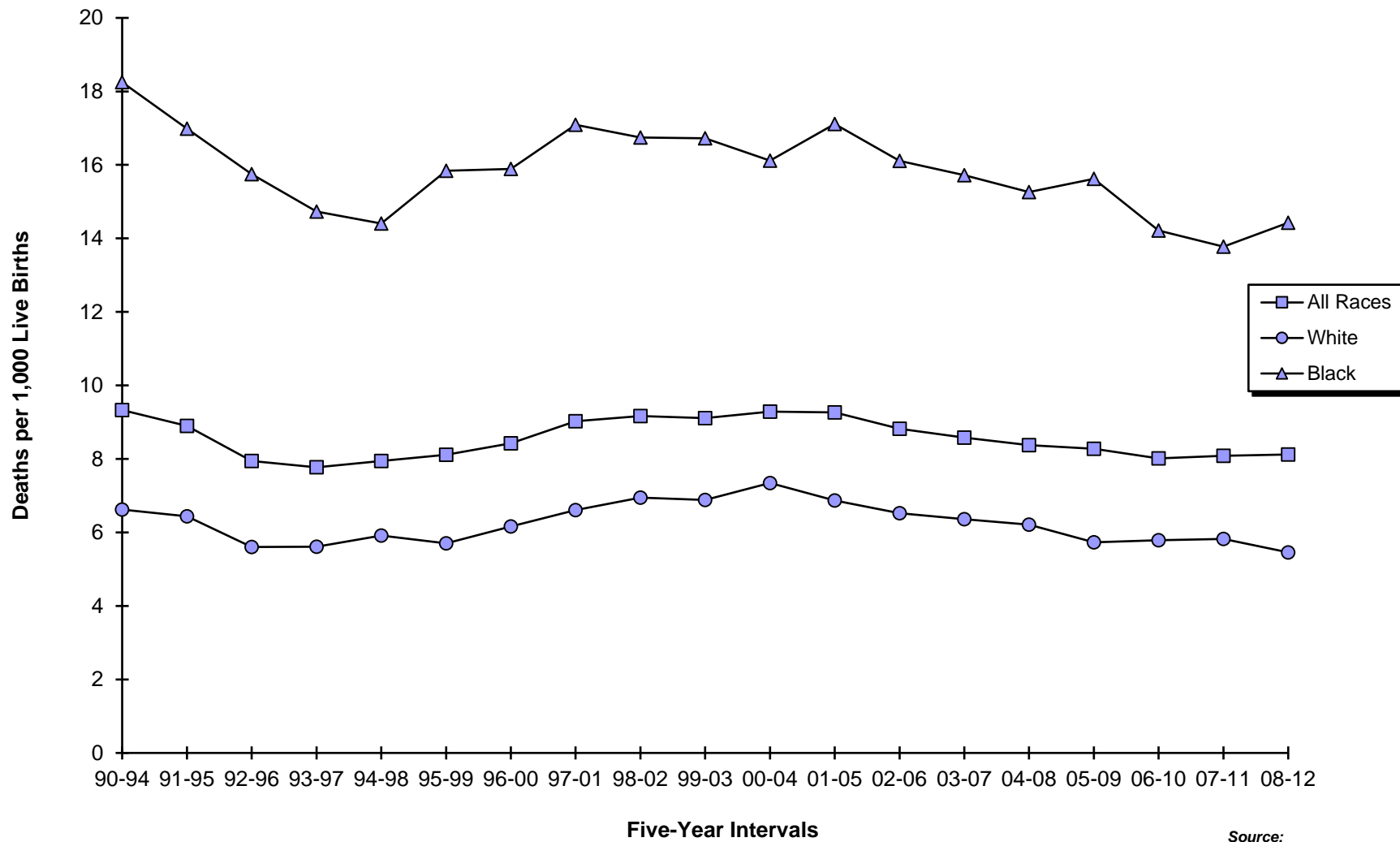
1. 2006-2010 U.S. data are based on NCHS estimates.
2. Infant mortality rates represent the number of deaths of children under one year of age per 1000 live births.
3. '+' indicates that the Delaware rate is significantly higher than the U.S. rate.
4. '-' indicates that the Delaware rate is significantly lower than the U.S. rate.
5. "----" Indicates rate does not meet standard of reliability or precision; based on fewer than 20 deaths in the numerator.
6. No statistical comparisons were made between the county rates and the U.S. rate due to small numbers. See Appendix C for details.

Sources:

National Center for Health Statistics
Delaware Health Statistics Center

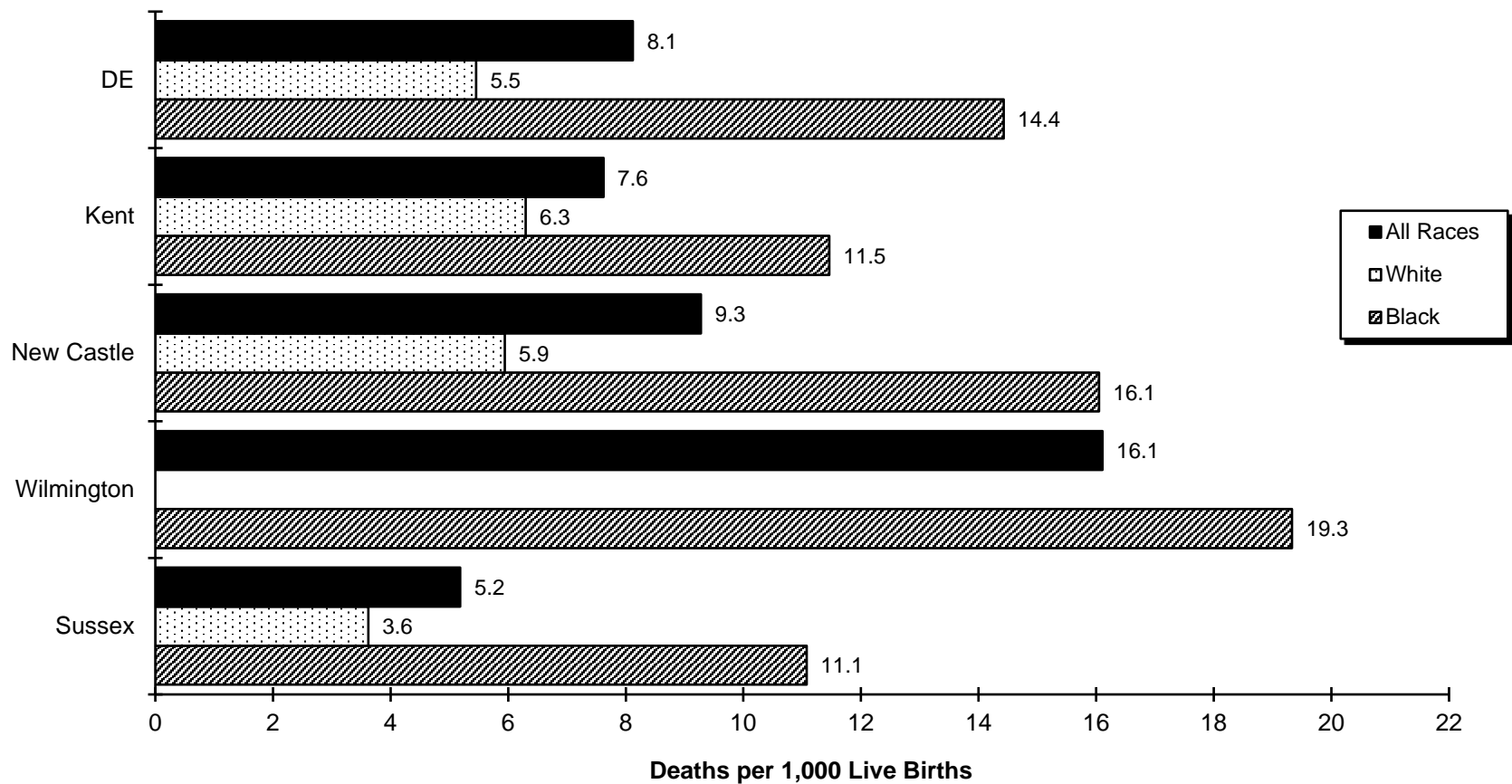
INFANT4

Figure E-1
Five-Year Average Infant Mortality Rates by Race
Delaware, 1990-2012



Source:
 Delaware Health Statistics Center

Figure E-2
Five-Year Average Infant Mortality Rates by Race
Delaware, Counties and the City of Wilmington, 2008-2012



Source:
 Delaware Health Statistics Center

TABLE E-5
FIVE-YEAR AVERAGE NEONATAL MORTALITY RATES BY RACE

U.S., DELAWARE, COUNTIES AND CITY OF WILMINGTON, 1992-2012

Area/ Race	1992 -1996	1993 -1997	1994 -1998	1995 -1999	1996 -2000	1997 -2001	1998 -2002	1999 -2003	2000 -2004	2001 -2005	2002 -2006	2003 -2007	2004 -2008	2005 -2009	2006 -2010	2007 -2011	2008 -2012
U.S.																	
All Races	5.1	5.0	4.9	4.8	4.7	4.7	4.7	4.6	4.6	4.6	4.6	4.5	4.4	4.4	4.3	4.2	4.1
White	4.2	4.1	4.0	4.0	3.9	3.9	3.9	3.9	3.8	3.8	3.8	3.8	3.7	3.7	3.6	3.5	3.5
Black	10.2	9.9	9.7	9.6	9.5	9.5	9.5	9.5	9.3	9.2	9.1	9.0	8.7	8.6	8.3	8.0	7.7
Delaware																	
All Races	5.4	5.3	5.4	5.5+	5.9+	6.4+	6.7+	6.7+	6.7+	6.7+	6.4+	6.1+	5.9+	5.9+	5.6+	5.7+	5.8+
White	3.8	3.7	3.7	3.5	4.0	4.4	5.0+	5.0+	5.3+	5.0+	4.8+	4.5+	4.3	4.0	3.8	3.7	3.5
Black	10.7	10.4	10.6	11.9+	12.1+	12.8+	12.7+	12.2+	11.4+	12.2+	11.6+	11.2+	10.8+	11.4+	10.3+	10.4+	11.1+
Kent																	
All Races	5.0	5.0	5.4	5.5	5.9	6.1	7.2	7.0	7.2	7.0	6.0	4.3	4.6	4.7	4.4	5.0	5.6
White	3.8	---	3.4	3.4	4.1	4.6	7.0	6.5	6.8	5.5	4.5	---	2.9	2.7	3.5	4.2	4.3
Black	---	12.7	12.1	12.0	12.1	11.3	8.9	9.3	9.2	11.2	10.0	9.1	8.8	10.1	7.3	7.2	8.9
New Castle																	
All Races	5.6	5.2	5.0	5.4	6.1	6.6	6.9	7.1	7.0	7.1	6.9	6.8	6.5	6.7	6.2	6.4	6.7
White	3.6	3.6	3.1	3.0	3.7	4.3	4.5	5.0	5.3	5.3	5.1	5.0	4.8	4.6	3.9	3.8	3.7
Black	12.4	10.8	10.8	13.0	13.5	14.2	14.5	13.9	12.4	12.5	12.3	12.1	11.7	12.1	11.8	12.2	12.5
Wilmington																	
All Races	10.5	8.7	8.0	8.7	9.8	9.7	10.1	9.8	9.1	9.5	8.9	9.0	8.9	9.6	9.0	9.7	11.6
White	---	---	---	---	---	---	---	---	---	---	---	---	---	---	---	---	---
Black	14.2	11.2	10.2	11.8	12.5	12.5	13.8	13.4	12.1	13.1	12.3	12.5	11.6	12.9	12.5	13.6	14.4
Balance of NC County																	
All Races	4.5	4.5	4.3	4.7	5.3	6.0	6.3	6.6	6.5	6.6	6.5	6.3	6.0	6.0	5.6	5.8	5.8
White	3.5	3.5	3.1	3.0	3.6	4.2	4.6	5.1	5.4	5.5	5.2	5.2	4.8	4.7	4.0	3.9	3.5
Black	10.6	10.3	11.4	14.1	14.4	15.6	15.1	14.2	12.5	12.1	12.3	11.8	11.8	11.6	11.5	11.4	11.6
Sussex																	
All Races	5.0	5.6	6.8	6.0	5.3	5.8	5.5	4.6	5.1	5.5	5.3	5.6	5.2	4.9	4.9	4.1	3.4
White	4.8	5.1	6.2	5.5	5.0	4.9	4.5	3.6	3.8	3.7	3.9	4.6	4.3	3.7	4.1	3.3	2.2
Black	---	---	---	---	---	---	---	---	9.9	12.1	10.8	10.3	9.3	9.8	---	---	---

INFANT5

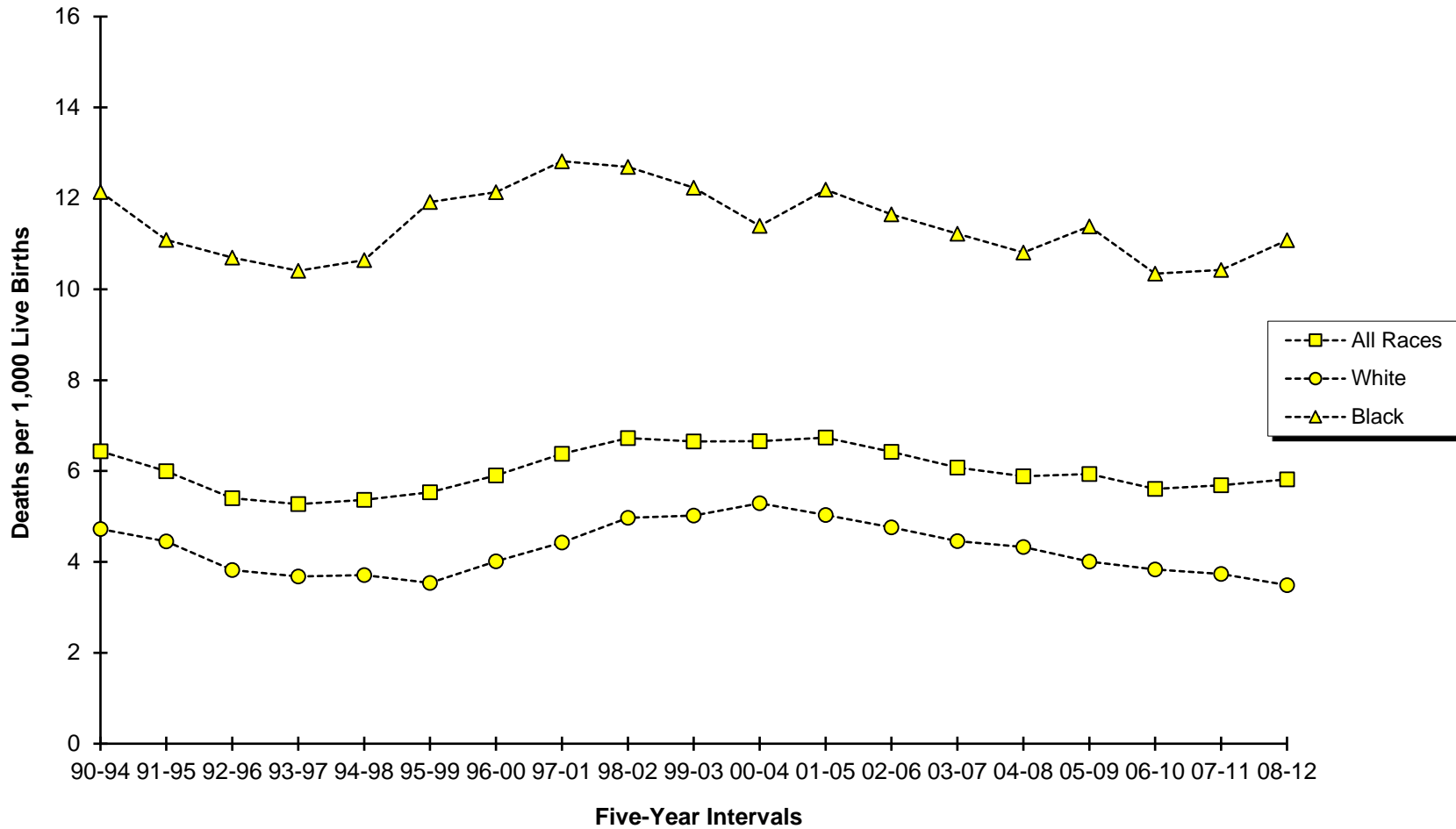
Notes:

1. 2006-2010 U.S. data are based on NCHS estimates.
2. Neonatal mortality rates represent the number of deaths of children under 28 days of age per 1000 live births.
3. '+' indicates that the Delaware rate is significantly higher than the U.S. rate.
4. "----" Indicates rate does not meet standard of reliability or precision; based on fewer than 20 deaths in the numerator.
5. No statistical comparisons were made between the county rates and the U.S. rate due to small numbers. See Appendix C for details.

Sources:

National Center for Health Statistics
Delaware Health Statistics Center

Figure E-3
Five-Year Average Neonatal Mortality Rates by Race
Delaware, 1990-2012



Source:
 Delaware Health Statistics Center

TABLE E-6
 FIVE-YEAR AVERAGE POSTNEONATAL MORTALITY RATES BY RACE
 U.S., DELAWARE, COUNTIES AND CITY OF WILMINGTON, 1992-2012

Area/ Race	1992 -1996	1993 -1997	1994 -1998	1995 -1999	1996 -2000	1997 -2001	1998 -2002	1999 -2003	2000 -2004	2001 -2005	2002 -2006	2003 -2007	2004 -2008	2005 -2009	2006 -2010	2007 -2011	2008 -2012
U.S.																	
All Races	2.9	2.7	2.6	2.5	2.4	2.4	2.3	2.3	2.3	2.3	2.3	2.3	2.3	2.3	2.2	2.2	2.1
White	2.4	2.3	2.1	2.0	2.0	1.9	1.9	1.9	1.9	1.9	1.9	1.9	1.9	1.9	1.9	1.8	1.8
Black	5.6	5.4	5.1	5.0	4.8	4.8	4.8	4.7	4.8	4.8	4.7	4.6	4.6	4.5	4.4	4.3	4.1
Delaware																	
All Races	2.5	2.5	2.6	2.6	2.5	2.6	2.4	2.5	2.6	2.5	2.4	2.5	2.5	2.3	2.4	2.4	2.3
White	1.8-	1.9	2.2	2.2	2.2	2.2	2.0	1.9	2.1	1.8	1.8	1.9	1.9	1.7	2.0	2.1	2.0
Black	5.1	4.3	3.8-	3.9	3.8	4.3	4.1	4.5	4.7	4.9	4.5	4.5	4.5	4.2	3.9	3.3-	3.3
Kent																	
All Races	3.5	3.2	3.6	3.0	2.7	2.7	2.7	2.6	2.9	3.0	3.1	2.8	2.6	2.3	2.0	1.9	2.1
White	3.0	3.1	3.7	---	2.9	---	---	---	---	---	---	---	---	---	---	---	---
Black	---	---	---	---	---	---	---	---	---	---	---	---	---	---	---	---	---
New Castle																	
All Races	2.2	2.1	2.3	2.5	2.4	2.5	2.2	2.3	2.4	2.3	2.3	2.5	2.5	2.3	2.6	2.7	2.5
White	1.4	1.4	1.7	1.9	1.8	2.0	1.8	1.8	1.9	1.8	1.7	2.0	2.1	1.9	2.3	2.4	2.2
Black	5.1	4.5	4.3	4.4	4.2	4.0	3.5	4.1	4.2	4.2	4.0	4.3	4.0	4.0	3.9	3.5	3.5
Wilmington																	
All Races	4.8	4.9	4.8	5.0	4.6	4.3	3.4	3.7	3.3	3.3	3.4	4.0	4.1	4.2	5.1	5.2	4.6
White	---	---	---	---	---	---	---	---	---	---	---	---	---	---	---	---	---
Black	6.3	6.5	6.6	6.3	6.2	5.5	---	---	---	---	---	---	---	5.1	5.5	5.5	---
Balance of NC County																	
All Races	1.6	1.5	1.7	1.9	1.9	2.1	2.0	2.0	2.3	2.1	2.0	2.2	2.1	1.9	2.1	2.1	2.1
White	1.3	1.3	1.6	1.8	1.8	1.9	1.8	1.6	1.9	1.7	1.6	1.9	2.0	1.7	2.0	2.1	2.0
Black	---	---	---	---	---	---	---	4.0	4.4	4.4	4.0	4.0	3.5	3.3	3.1	---	---
Sussex																	
All Races	2.9	3.4	2.7	2.5	2.8	3.3	2.9	2.8	3.0	2.7	2.2	2.3	2.4	2.3	2.2	2.1	1.8
White	---	---	---	---	---	---	---	---	---	---	---	---	---	---	---	---	---
Black	---	---	---	---	---	---	---	---	---	---	---	---	---	---	---	---	---

INFANT6

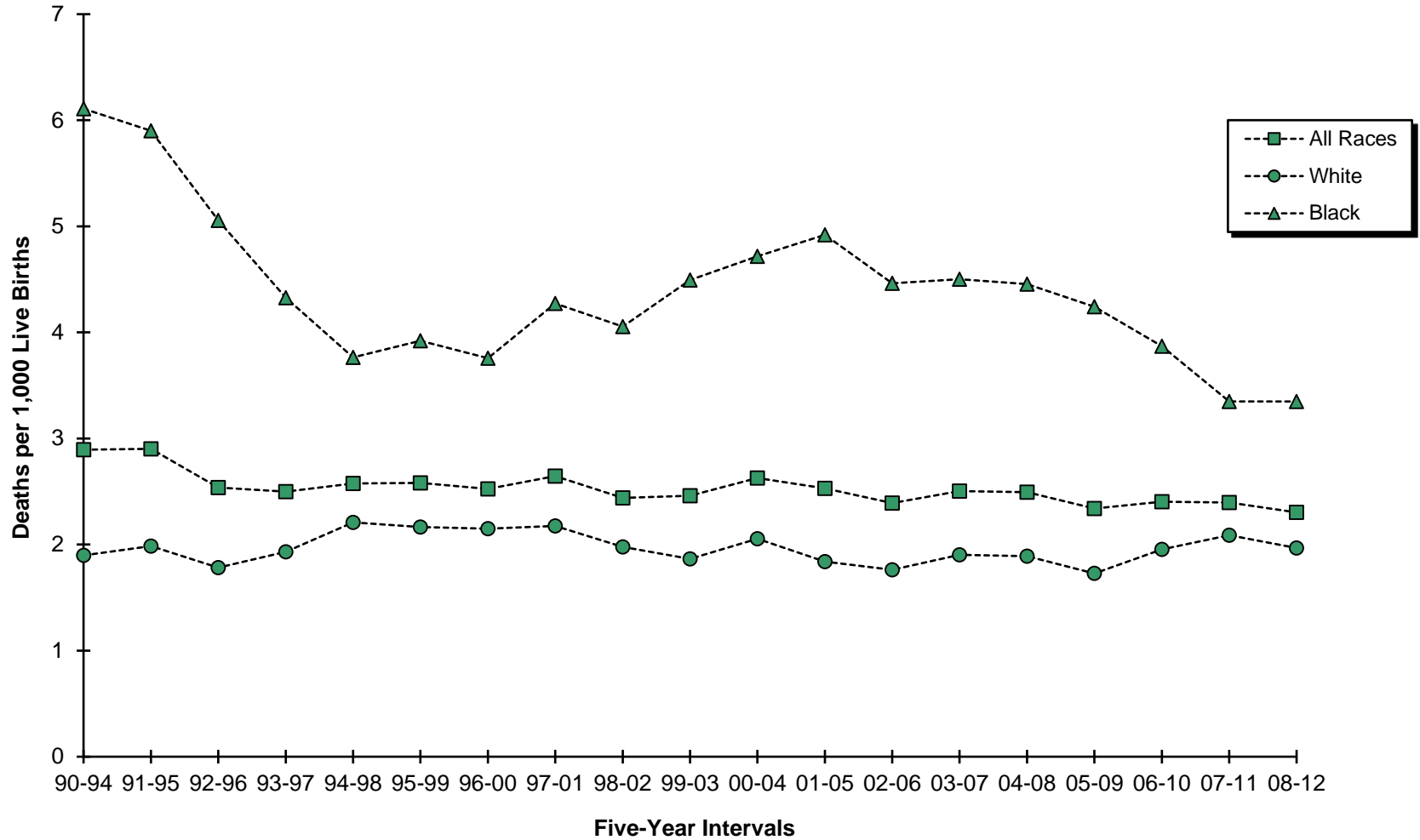
Notes:

1. 2006-2010 U.S. data are based on NCHS estimates.
2. Postneonatal mortality rates represent the number of deaths of children 28 to 364 days of age per 1000 live births.
3. '-' indicates that the Delaware rate is significantly lower than the U.S. rate.
4. "----" indicates rate does not meet standard of reliability or precision; based on fewer than 20 deaths in the numerator.
5. No statistical comparisons were made between the county rates and the U.S. rate due to small numbers. See Appendix C for details.

Sources:

National Center for Health Statistics
 Delaware Health Statistics Center

Figure E-4
Five-Year Average Postneonatal Mortality Rates by Race
Delaware, 1990-2012



Source:
 Delaware Health Statistics Center

TABLE E-7
FIVE-YEAR AVERAGE INFANT MORTALITY
RATES BY SELECTED RISK MARKERS AND RACE OF MOTHER

DELAWARE, 2007-2011 LIVE BIRTH COHORT

Risk Factor	Race		
	All Races	White	Black
Birth Weight of Child			
<2500	67.1	54.9	85.9
<1500	264.7	233.3	295.1
1500-2499	16.3	18.2	14.7
2500+	2.2	2.3	2.3
Age of Mother			
<20	10.2	6.6	14.5
20-24	8.9	6.5	13.6
25-29	7.5	6.0	12.4
30+	7.0	5.6	13.5
Marital Status of Mother			
Married	5.9	5.1	12.0
Single	10.1	7.4	13.9
Education of Mother			
<12 years	9.1	6.8	15.1
H.S. diploma	10.8	8.5	14.6
1+ years college	5.8	4.6	10.8
Interval Since Last Live Birth			
<18 months	8.3	---	12.9
18+ months	5.7	4.8	8.3

COHRATES

Notes:

1. Infant mortality rates represent the number of deaths to children under one year of age per 1,000 live births.

Source:

Delaware Health Statistics Center

TABLE E-8
LEADING CAUSES OF INFANT DEATH BY GESTATIONAL AGE CATEGORY

DELAWARE, 2007-2011 LIVE BIRTH COHORT

Leading causes of death	Gestational Age Category					% Born Very Preterm	% Born Preterm
	Very preterm	Moderately preterm	Term	Unknown	Total		
Disorders related to short gestation and low birth weight, not elsewhere classified	111	0	2	2	115	96.5	96.5
Congenital malformations, deformations, and chromosomal abnormalities	10	22	37	0	69	14.5	46.4
Sudden infant death syndrome	1	11	36	0	48	2.1	25.0
Newborn affected by maternal complications of pregnancy	40	2	0	0	42	95.2	100.0
Newborn affected by complications of placenta, cord, and membranes	22	0	1	0	23	95.7	95.7
Respiratory distress of newborn	12	1	1	0	14	85.7	92.9
Diseases of the circulatory system	0	6	7	0	13	0.0	46.2
Accidents (unintentional injuries)	2	2	5	0	9	22.2	44.4
Bacterial sepsis of newborn	6	1	0	0	7	85.7	100.0
Diarrhea and gastroenteritis of infectious origin	5	0	1	0	6	83.3	83.3
Septicemia	3	1	2	0	6	50.0	66.7
Intrauterine hypoxia and birth asphyxia	4	0	1	1	6	66.7	66.7
Gastritis, duodenitis, and noninfective enteritis and colitis	4	1	0	0	5	80.0	100.0
Newborn affected by other complications of labor and delivery	5	0	0	0	5	100.0	100.0
Neonatal hemorrhage	5	0	0	0	5	100.0	100.0
Atelectasis	4	0	0	0	4	100.0	100.0
Assault (homicide)	0	1	3	0	4	0.0	25.0
involving the immune mechanism	0	1	1	1	3	0.0	33.3
Influenza and pneumonia	0	0	3	0	3	0.0	0.0
Interstitial emphysema and related conditions originating in the perinatal period	3	0	0	0	3	100.0	100.0
All other causes	34	6	29	0	69	49.3	58.0
TOTAL	271	55	129	4	459	59.0	71.0

INFLCOD

Notes:

1. Leading causes of infant death are categorized using NCHS rankable causes of infant death, specific ICD-10 codes are shown in Appendix D.
2. Very preterm is defined as less than 32 weeks of gestation.
3. Moderately preterm is defined as between 32 and 36 weeks of gestation.
4. Term is defined as 37 and greater weeks of gestation.
5. The percent born preterm includes both the very preterm and moderately preterm groups.

Source:

Delaware Health Statistics Center

TABLE E-9
FIVE-YEAR AVERAGE INFANT MORTALITY RATES BY RACE AND SELECTED RISK MARKERS

DELAWARE LIVE BIRTH COHORT, 1992-2011

Parameter/ Race	1992 -1996	1993 -1997	1994 -1998	1995 -1999	1996 -2000	1997 -2001	1998 -2002	1999 -2003	2000 -2004	2001 -2005	2002 -2006	2003 -2007	2004 -2008	2005 -2009	2006 -2010	2007 -2011
BIRTHWEIGHT																
2500+																
All Races	2.3	2.3	2.5	2.4	2.4	2.5	2.3	2.4	2.5	2.2	2.2	2.3	2.0	1.9	2.2	2.2
White	2.0	2.1	2.4	2.4	2.3	2.4	2.1	2.0	2.1	1.9	1.7	1.9	1.8	1.7	2.1	2.3
Black	3.3	2.9	2.8	2.8	2.8	3.0	3.0	3.6	3.9	3.5	3.6	3.5	2.9	2.8	2.7	2.3
<2500																
All Races	68.7	65.4	64.8	66.5	69.5	75.2	76.4	74.2	73.1	74.5	69.9	68.8	69.2	70.6	65.5	67.1
White	58.4	56.9	55.4	53.9	55.9	63.2	68.7	67.4	68.8	68.4	64.3	60.8	60.0	58.5	55.6	54.9
Black	85.3	78.9	78.8	86.0	88.2	93.7	90.5	88.3	83.0	88.0	80.9	82.2	83.9	89.5	81.6	85.9
<1500																
All Races	272.9	255.2	258.5	262.7	270.9	304.8	316.2	302.4	306.2	313.9	289.4	285.8	286.8	279.3	260.8	264.7
White	239.3	229.8	223.2	219.3	231.5	281.9	303.4	297.2	316.8	321.2	295.3	289.0	280.2	262.0	242.2	233.3
Black	306.1	280.3	296.8	315.8	312.1	329.8	335.5	317.0	301.5	315.7	289.4	286.0	291.9	298.9	283.9	295.1
GESTATION																
37+ weeks																
All Races	2.3	2.4	2.6	2.6	2.5	2.5	2.3	2.3	2.4	2.2	2.2	2.3	2.0	2.0	2.4	2.6
White	2.2	2.3	2.6	2.6	2.4	2.3	2.1	1.9	2.0	1.7	1.8	1.9	1.8	1.8	2.4	2.7
Black	2.8	2.8	2.8	2.7	2.8	3.1	2.9	3.7	4.0	3.4	3.4	3.4	2.9	2.7	2.8	2.7
<37 weeks																
All Races	50.3	47.1	45.6	45.9	48.2	53.0	54.3	52.8	52.6	53.5	49.1	47.1	47.0	47.3	43.6	44.3
White	38.1	37.2	35.4	33.6	35.7	41.8	45.5	45.1	46.5	45.2	40.5	37.5	36.2	34.9	33.0	32.3
Black	72.3	65.3	64.1	69.6	70.5	73.5	72.5	70.5	67.7	72.7	68.2	66.9	68.3	71.1	64.0	66.3
<32 weeks																
All Races	212.4	196.5	199.8	201.3	214.9	238.1	249.6	238.7	239.4	249.1	232.4	220.4	220.4	216.9	195.0	195.7
White	186.3	177.7	179.4	174.0	191.5	228.4	249.2	238.2	244.0	248.3	223.0	202.7	193.2	184.8	159.9	153.0
Black	239.1	215.4	222.2	235.6	238.7	250.4	255.4	246.3	239.8	259.4	250.0	246.4	255.2	258.8	237.4	240.9
PLURALITY																
Single																
All Races	7.0	6.7	6.7	6.8	6.9	7.3	7.3	7.3	7.5	7.4	7.1	7.2	7.0	7.0	7.0	7.0
White	5.0	5.0	5.1	5.1	4.9	5.2	5.4	5.2	5.6	5.4	5.1	5.2	5.2	4.9	5.4	5.4
Black	13.3	12.1	11.5	12.2	12.9	13.4	13.4	13.8	13.5	13.6	13.0	12.8	12.2	12.7	11.8	11.6
Plural																
All Races	30.0	33.5	39.3	41.6	45.4	53.1	52.9	52.3	50.3	52.0	47.0	44.0	40.3	41.0	32.6	34.2
White	24.5	28.9	30.4	28.6	35.1	43.4	48.0	50.3	49.2	49.9	44.0	36.6	29.6	30.6	23.0	23.5
Black	---	---	68.7	84.6	73.0	80.7	68.5	60.8	54.1	64.6	59.1	63.5	67.7	69.5	54.4	55.5
SMOKING DURING PREGNANCY																
No																
All Races	7.0	7.1	7.1	7.4	7.6	8.1	8.0	8.2	8.2	8.2	7.9	7.7	7.4	7.6	7.4	7.4
White	5.0	5.3	5.2	5.3	5.3	5.7	5.8	5.9	6.2	6.1	6.0	5.7	5.4	5.3	5.6	5.5
Black	13.4	12.6	12.7	14.0	14.3	15.3	14.8	15.0	14.3	14.7	13.7	13.4	13.2	13.9	12.9	12.9
Yes																
All Races	10.3	9.2	10.6	10.6	11.3	13.4	15.1	14.1	14.8	15.1	13.4	13.9	13.3	12.1	10.7	10.8
White	8.2	7.4	9.4	9.3	9.8	12.2	14.2	12.7	13.3	13.0	10.2	10.7	10.7	8.9	8.2	8.9
Black	18.6	16.2	15.3	16.3	17.3	18.0	18.9	19.4	19.5	22.0	23.9	23.8	21.2	21.5	17.5	15.8

TABLE E-9 (continued)
 FIVE-YEAR AVERAGE INFANT MORTALITY RATES BY RACE AND SELECTED RISK MARKERS

DELAWARE LIVE BIRTH COHORT, 1992-2011

Parameter/ Race	1992 -1996	1993 -1997	1994 -1998	1995 -1999	1996 -2000	1997 -2001	1998 -2002	1999 -2003	2000 -2004	2001 -2005	2002 -2006	2003 -2007	2004 -2008	2005 -2009	2006 -2010	2007 -2011
EDUCATION																
HS Grad or less																
All Races	9.5	9.4	9.9	10.4	10.3	11.1	11.5	11.4	11.4	11.1	10.7	10.8	10.1	10.0	10.0	10.0
White	6.9	7.2	8.0	8.0	7.8	8.4	9.1	8.8	9.1	8.7	8.3	8.4	7.8	7.6	7.7	7.6
Black	15.7	14.3	14.3	15.8	15.6	16.8	16.9	17.2	16.9	17.2	16.6	16.4	15.4	15.4	14.8	14.8
1+ yrs college																
All Races	5.0	4.9	4.9	4.9	5.5	6.1	6.0	6.0	6.0	6.3	5.8	5.4	5.6	5.9	5.6	5.8
White	4.0	3.9	3.7	3.6	4.1	4.6	4.7	4.7	5.0	4.5	4.5	4.1	4.2	4.1	4.3	4.6
Black	9.9	10.2	10.5	11.8	13.5	13.9	12.6	12.2	11.0	12.0	11.1	10.9	11.4	13.1	11.2	10.8
PAYMENT FOR DELIVERY																
Medicaid																
All Races	10.1	10.0	10.3	10.9	9.9	10.6	10.1	9.5	9.8	10.2	9.6	10.4	10.2	9.9	9.5	9.3
White	7.3	7.9	8.8	9.1	7.7	8.6	8.3	7.1	7.5	7.7	7.1	8.0	8.0	7.5	7.5	7.0
Black	13.8	12.9	12.7	13.6	13.1	13.8	13.0	13.3	13.7	14.7	14.0	14.4	14.1	14.1	13.0	13.3
Private Insurance																
All Races	5.5	5.3	5.5	5.7	6.5	6.8	7.4	7.7	7.8	7.6	7.4	6.7	6.4	6.6	6.4	6.4
White	4.4	4.2	4.2	4.3	4.9	5.2	5.7	5.9	6.1	5.8	5.6	5.0	4.6	4.5	4.7	5.0
Black	12.6	11.6	12.8	13.7	14.8	15.6	16.5	17.1	16.9	17.0	16.6	15.3	15.0	16.4	14.8	13.7

COTREND

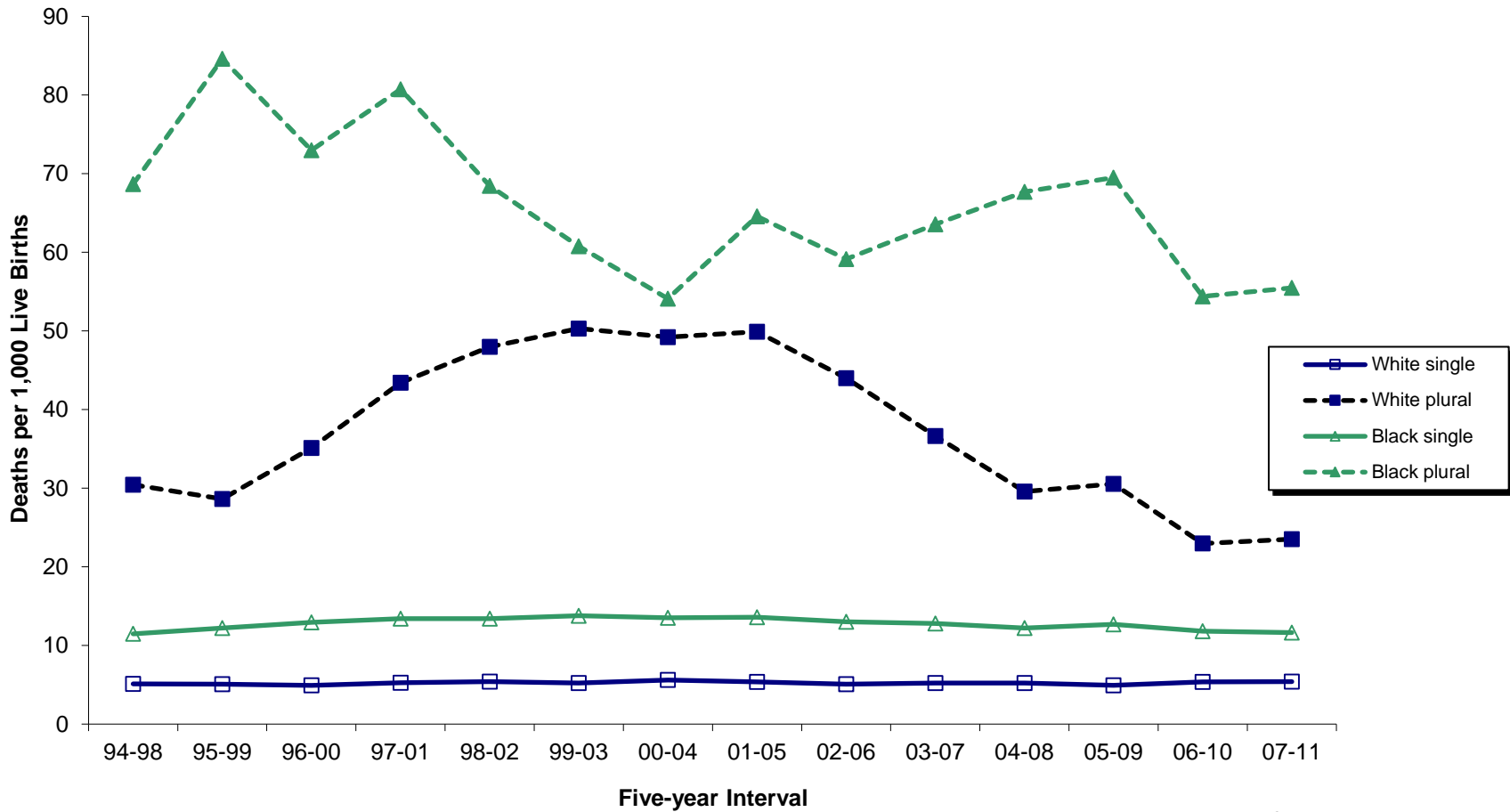
Notes:

1. See the Basic Definitions' section for definitions of birthweight, gestation, prenatal care attainment, and plurality.
2. "---" indicates rate does not meet standards of reliability or precision; based on fewer than 20 deaths in the numerator.
3. Primary source of payment for delivery not available prior to 1991.

Source:

Delaware Health Statistics Center

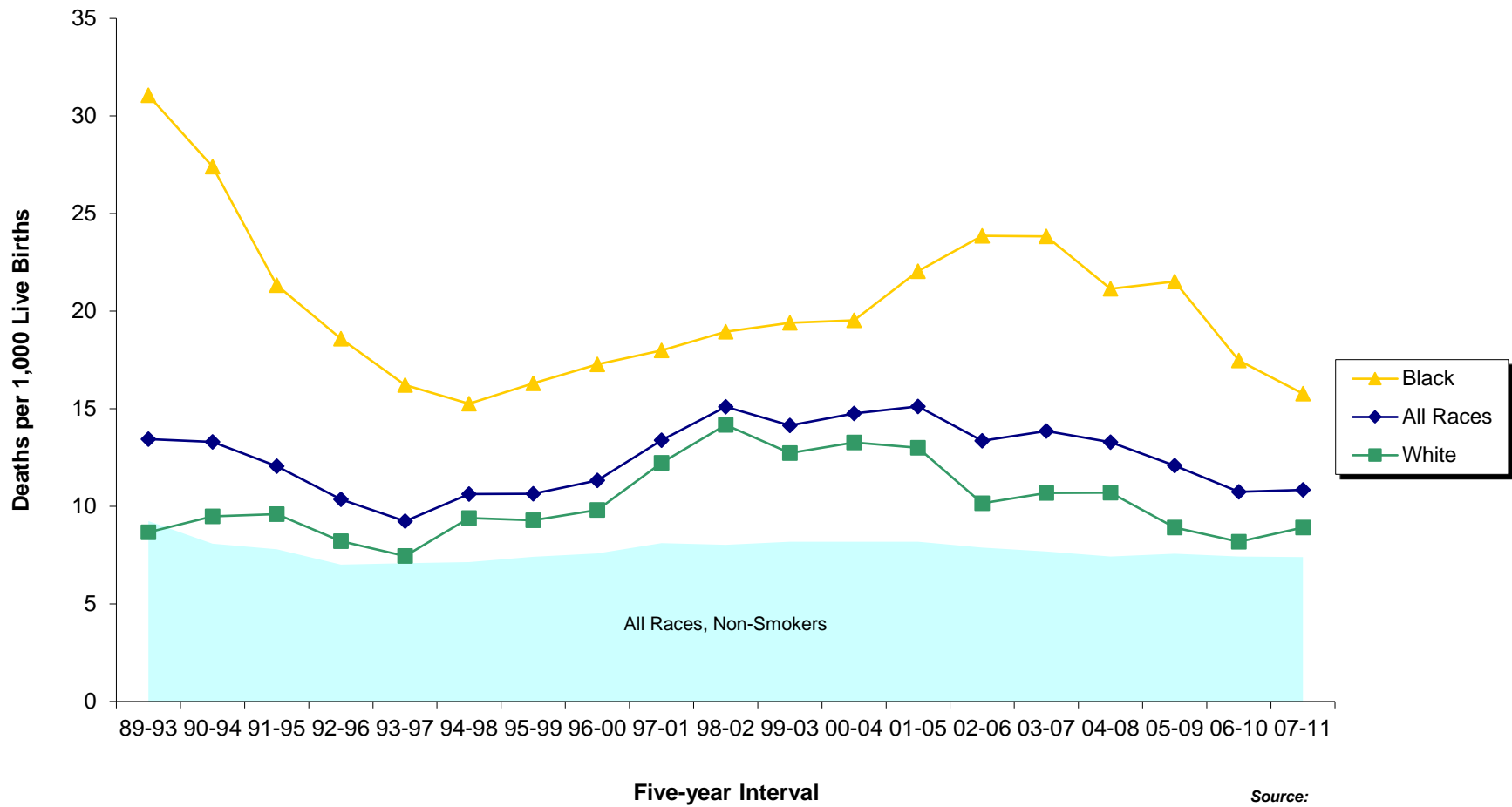
Figure E-5
Five-year Average Infant Mortality Rates by Race and Plurality
Delaware, 1994-2011 Live Birth Cohort



Source:
 Delaware Health Statistics Center

Figure E-6
Five-year Average Infant Mortality Rates by Race of Mothers who Smoked during
Pregnancy versus all Non-smoking Mothers

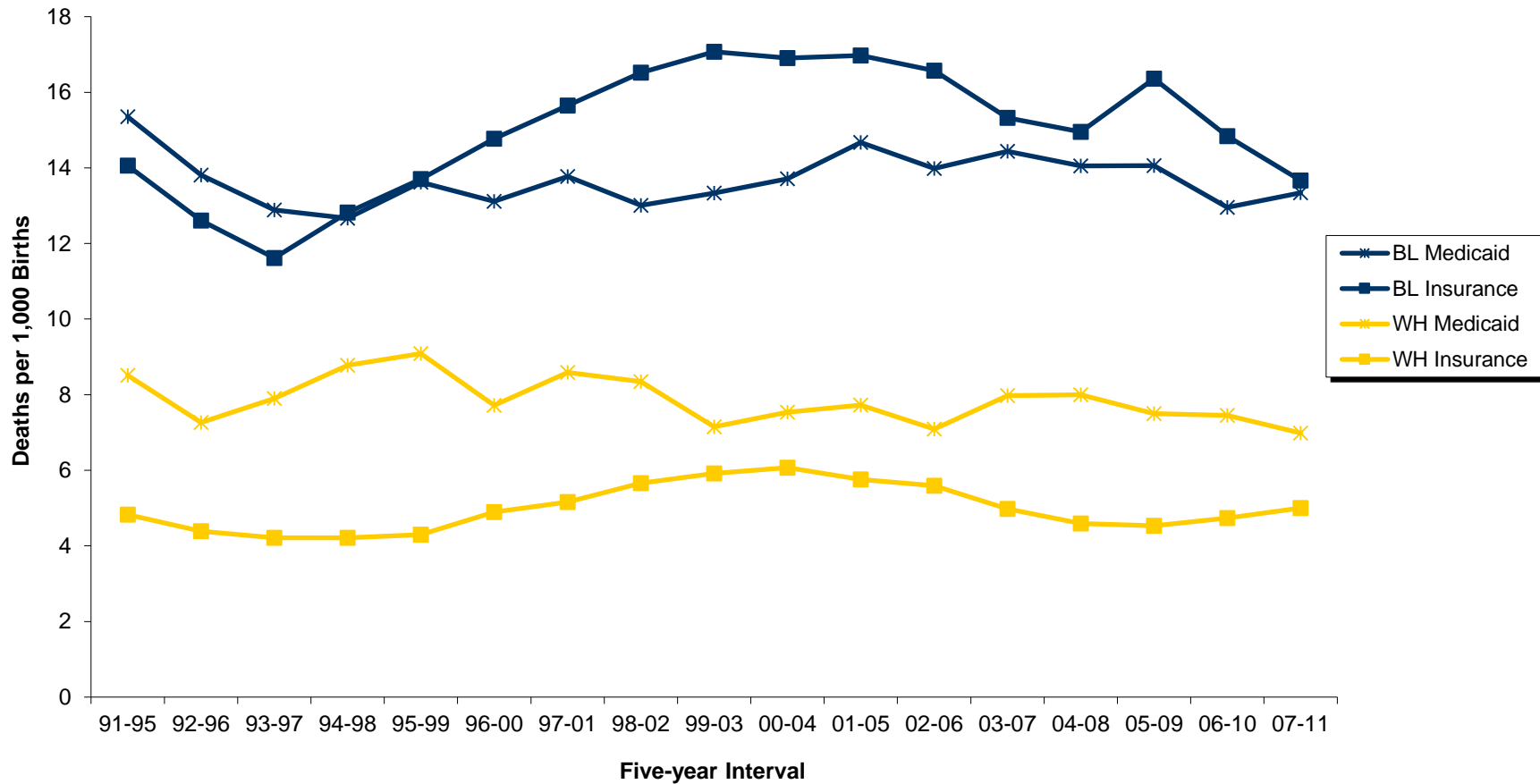
Delaware, 1989-2011 Live Birth Cohort



Source:
 Delaware Health Statistics Center

Figure E-7
Five-year Average Infant Mortality Rates by Race and
Source of Payment for Delivery

Delaware, 1991-2011 Live Birth Cohort



Source:
 Delaware Health Statistics Center

TABLE E-10
NUMBER OF INFANT DEATHS BY PLURALITY, BIRTH WEIGHT IN GRAMS, RACE OF MOTHER AND SEX OF CHILD
DELAWARE, 2007-2011 LIVE BIRTH COHORT

Plurality/ Birth Weight	Race and Sex										
	All Races			White			Black			Other	
	Both Sexes	Male	Female	Both Sexes	Male	Female	Both Sexes	Male	Female	Both Sexes	Male
All Births	459	248	211	233	128	105	212	111	101	14	9
<2500	341	187	154	149	87	62	180	92	88	12	8
<1500	275	157	118	108	70	38	157	80	77	10	7
<500	130	67	63	39	19	20	86	44	42	5	4
500-999	123	75	48	56	41	15	63	32	31	4	2
1000-1499	22	15	7	13	10	3	8	4	4	1	1
1500-1999	33	15	18	22	10	12	10	5	5	1	0
2000-2499	33	15	18	19	7	12	13	7	6	1	1
2500+	114	57	57	82	39	43	31	18	13	1	0
2500-2999	43	18	25	31	15	16	12	3	9	0	0
3000-3499	41	22	19	25	10	15	15	12	3	1	0
3500-3999	25	13	12	21	10	11	4	3	1	0	0
4000-4499	4	3	1	4	3	1	0	0	0	0	0
4500+	1	1	0	1	1	0	0	0	0	0	0
Unknown	4	4	0	2	2	0	1	1	0	1	1
Single Births	391	216	175	203	110	93	177	99	78	11	7
<2500	280	158	122	123	70	53	148	82	66	9	6
<1500	219	131	88	84	55	29	128	71	57	7	5
<500	109	57	52	34	16	18	72	38	34	3	3
500-999	94	64	30	42	33	9	48	29	19	4	2
1000-1499	16	10	6	8	6	2	8	4	4	0	0
1500-1999	33	15	18	22	10	12	10	5	5	1	0
2000-2499	28	12	16	17	5	12	10	6	4	1	1
2500+	108	55	53	78	38	40	29	17	12	1	0
2500-2999	40	17	23	29	14	15	11	3	8	0	0
3000-3499	38	21	17	23	10	13	14	11	3	1	0
3500-3999	25	13	12	21	10	11	4	3	1	0	0
4000-4499	4	3	1	4	3	1	0	0	0	0	0
4500+	1	1	0	1	1	0	0	0	0	0	0
Unknown	3	3	0	2	2	0	0	0	0	1	1
Plural Births	68	32	36	30	18	12	35	12	23	3	2
<2500	61	29	32	26	17	9	32	10	22	3	2
<1500	56	26	30	24	15	9	29	9	20	3	2
<500	21	10	11	5	3	2	14	6	8	2	1
500-999	29	11	18	14	8	6	15	3	12	0	0
1000-1499	6	5	1	5	4	1	0	0	0	1	1
1500-1999	0	0	0	0	0	0	0	0	0	0	0
2000-2499	5	3	2	2	2	0	3	1	2	0	0
2500+	6	2	4	4	1	3	2	1	1	0	0
2500-2999	3	1	2	2	1	1	1	0	1	0	0
3000-3499	3	1	2	2	0	2	1	1	0	0	0
3500-3999	0	0	0	0	0	0	0	0	0	0	0
4000-4499	0	0	0	0	0	0	0	0	0	0	0
4500+	0	0	0	0	0	0	0	0	0	0	0
Unknown	1	1	0	0	0	0	1	1	0	0	0

PLBWRCSX

Note:
Infant deaths refer to deaths of children under one year of age.

Source:
Delaware Health Statistics Center

TABLE E-11
NUMBER OF NEONATAL DEATHS BY PLURALITY, BIRTH WEIGHT IN GRAMS, RACE OF MOTHER AND SEX OF CHILD
DELAWARE, 2007-2011 LIVE BIRTH COHORT

Plurality/ Birth Weight	Race and Sex										
	All Races			White			Black			Other	
	Both Sexes	Male	Female	Both Sexes	Male	Female	Both Sexes	Male	Female	Both Sexes	Male
All Births	325	183	142	150	88	62	164	88	76	11	7
<2500	286	159	127	123	74	49	152	78	74	11	7
<1500	250	143	107	99	64	35	142	73	69	9	6
<500	130	67	63	39	19	20	86	44	42	5	4
500-999	102	64	38	49	36	13	50	27	23	3	1
1000-1499	18	12	6	11	9	2	6	2	4	1	1
1500-1999	21	9	12	13	6	7	7	3	4	1	0
2000-2499	15	7	8	11	4	7	3	2	1	1	1
2500+	36	21	15	25	12	13	11	9	2	0	0
2500-2999	14	8	6	11	6	5	3	2	1	0	0
3000-3499	12	7	5	7	2	5	5	5	0	0	0
3500-3999	8	5	3	5	3	2	3	2	1	0	0
4000-4499	2	1	1	2	1	1	0	0	0	0	0
4500+	0	0	0	0	0	0	0	0	0	0	0
Unknown	3	3	0	2	2	0	1	1	0	0	0
Single Births	268	155	113	125	73	52	135	77	58	8	5
<2500	233	133	100	101	60	41	124	68	56	8	5
<1500	198	118	80	77	50	27	115	64	51	6	4
<500	109	57	52	34	16	18	72	38	34	3	3
500-999	76	53	23	36	28	8	37	24	13	3	1
1000-1499	13	8	5	7	6	1	6	2	4	0	0
1500-1999	21	9	12	13	6	7	7	3	4	1	0
2000-2499	14	6	8	11	4	7	2	1	1	1	1
2500+	33	20	13	22	11	11	11	9	2	0	0
2500-2999	13	7	6	10	5	5	3	2	1	0	0
3000-3499	10	7	3	5	2	3	5	5	0	0	0
3500-3999	8	5	3	5	3	2	3	2	1	0	0
4000-4499	2	1	1	2	1	1	0	0	0	0	0
4500+	0	0	0	0	0	0	0	0	0	0	0
Unknown	2	2	0	2	2	0	0	0	0	0	0
Plural Births	57	28	29	25	15	10	29	11	18	3	2
<2500	53	26	27	22	14	8	28	10	18	3	2
<1500	52	25	27	22	14	8	27	9	18	3	2
<500	21	10	11	5	3	2	14	6	8	2	1
500-999	26	11	15	13	8	5	13	3	10	0	0
1000-1499	5	4	1	4	3	1	0	0	0	1	1
1500-1999	0	0	0	0	0	0	0	0	0	0	0
2000-2499	1	1	0	0	0	0	1	1	0	0	0
2500+	3	1	2	3	1	2	0	0	0	0	0
2500-2999	1	1	0	1	1	0	0	0	0	0	0
3000-3499	2	0	2	2	0	2	0	0	0	0	0
3500-3999	0	0	0	0	0	0	0	0	0	0	0
4000-4499	0	0	0	0	0	0	0	0	0	0	0
4500+	0	0	0	0	0	0	0	0	0	0	0
Unknown	1	1	0	0	0	0	1	1	0	0	0

NEOPLBW

Note:
Neonatal deaths refer to deaths of children under 28 days of age.

Source:
Delaware Health Statistics Center