



DELAWARE VITAL STATISTICS ANNUAL REPORT MORTALITY, 2015

Suggested Citation:

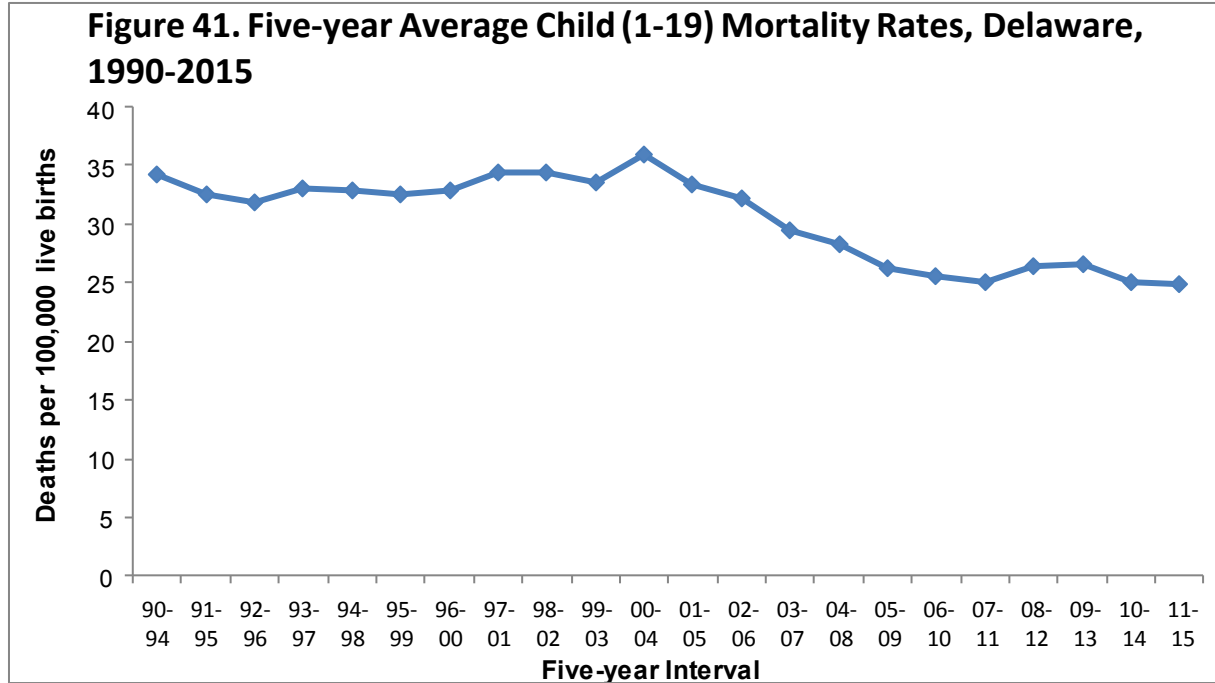
Delaware Health Statistics Center. *Delaware Vital Statistics Annual Report, 2015.*

Delaware Health and Social Services, Division of Public Health: 2017.

CHILD MORTALITY

For 2011-2015, 278 children and adolescents between the ages of 1 and 19 died in Delaware, representing 0.7 percent of the total deaths that occurred during that time. Males accounted for 65 percent of all child deaths in 2011-2015.

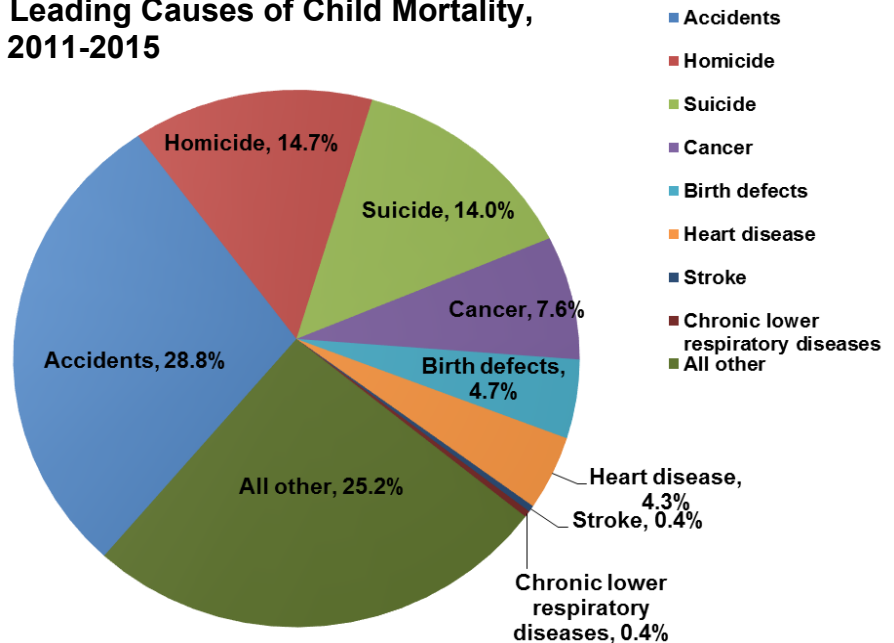
After small fluctuations throughout the 1990s, the mortality rate for children ages 1 to 19 began to decline. Since its peak of 36 in 2000-2004, the rate has decreased 30 percent, to 25 deaths per 100,000 children in 2011-2015.



Source: Delaware Health and Social Services, Division of Public Health, Delaware Health Statistics Center

Accidents, homicide, suicide, and cancer were the four most common causes of child mortality in 2011-2015. Together, they accounted for nearly two-thirds of all child deaths.

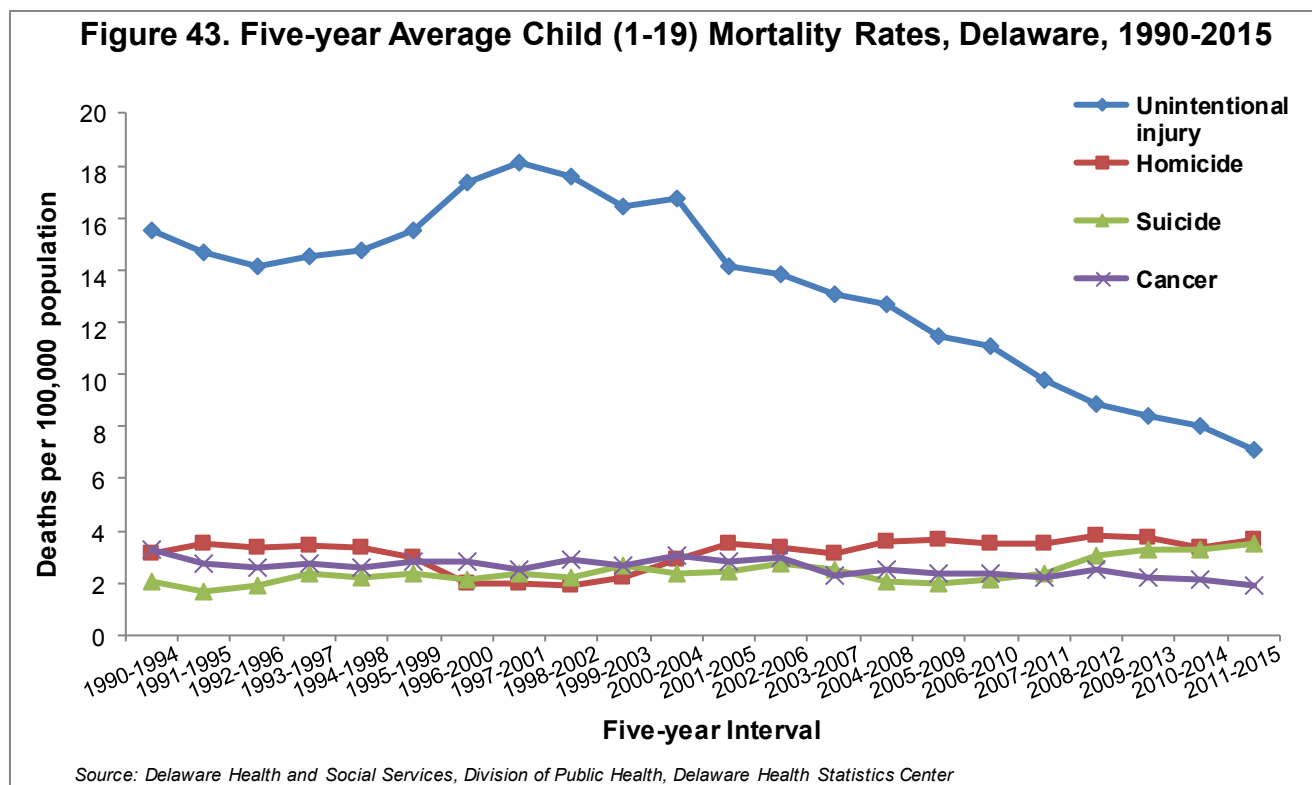
Figure 42. Leading Causes of Child Mortality, Delaware, 2011-2015



Source: Delaware Health and Social Services, Division of Public Health, Delaware Health Statistics Center

CHILD MORTALITY

From 2001-2005 to 2011-2015, rates for two of the four leading causes of mortality in children ages 1-19 declined. Unintentional injury mortality rates declined by 50 percent; cancer mortality rates fell 34 percent; and homicide mortality rates increased by 5 percent. Suicide mortality rates increased 41 percent to 3.5 deaths per 100,000 children.



The most common causes of child deaths in 2011-2015 are:

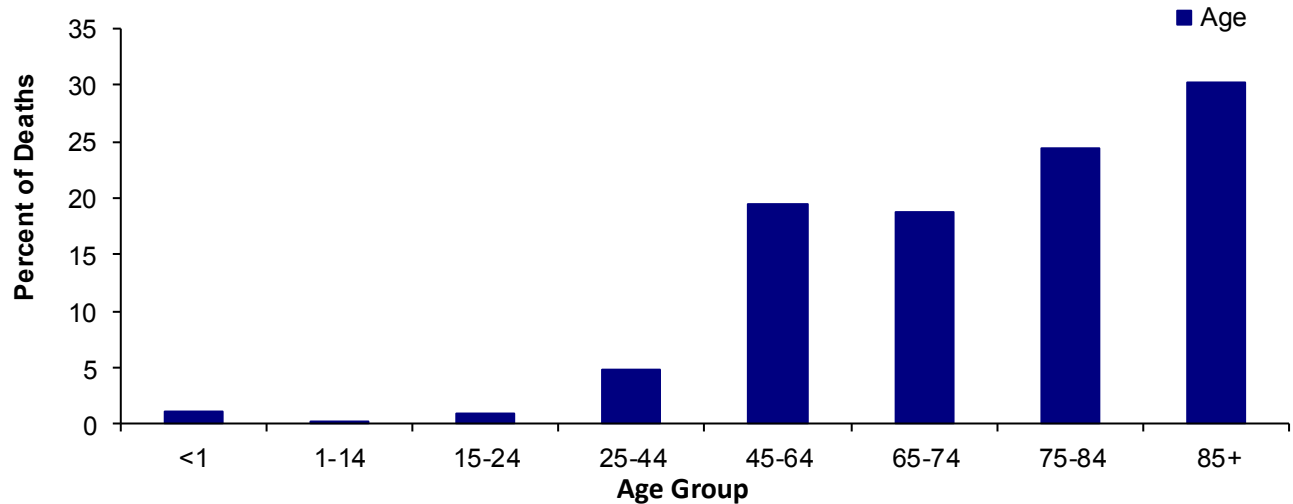
- Motor vehicle crashes accounted for 56 percent of all deaths due to unintentional injuries. The second and third most common causes of unintentional injury deaths of children were poisoning and drowning, which accounted for 18 and 11 percent of deaths, respectively.
- Most child homicides were due to firearms (76 percent) and fire/burning (2 percent).
- The majority of child cancer deaths were due to brain cancer (48 percent) and leukemia (19 percent).
- Suffocation, followed by firearms, were the most common methods of suicide, and accounted for 51 and 26 percent of the total suicide deaths.

MORTALITY

More Delaware residents died in 2015 than in 2014. A total of 8,580 residents died, 100 of whom were infants under the age of 1. Deaths were split almost equally between males and females. Cancer and heart disease were the most common causes of death, accounting for 46 percent of all deaths in 2015.

- Thirty percent of the Delawareans who died in 2015 were 85 or older. Deaths of those 75 and older accounted for more than half of all deaths.

Figure 44. Percent of Deaths by Age, Delaware, 2015



Source: Delaware Health and Social Services, Division of Public Health, Delaware Health Statistics Center

- A Delaware resident born in 2015 could expect to live an average of 79.2 years.
- Life expectancy at birth varied by race and sex; white females had the highest life expectancy (82.5) while black males had the lowest (74.1).
- In 1989, 80 percent of Delaware decedents were buried and 15 percent were cremated. By 2015, the distribution had shifted: 48 percent of decedents were buried and 47 percent were cremated.
- In 2015, the 10 leading causes of death for residents of all ages changed slightly from the top 10 in 2014. Influenza became the eighth leading cause of death, whereas nephritis became the ninth leading cause of death.

Figure 45. Number of Deaths by Leading Cause, Delaware, 2015

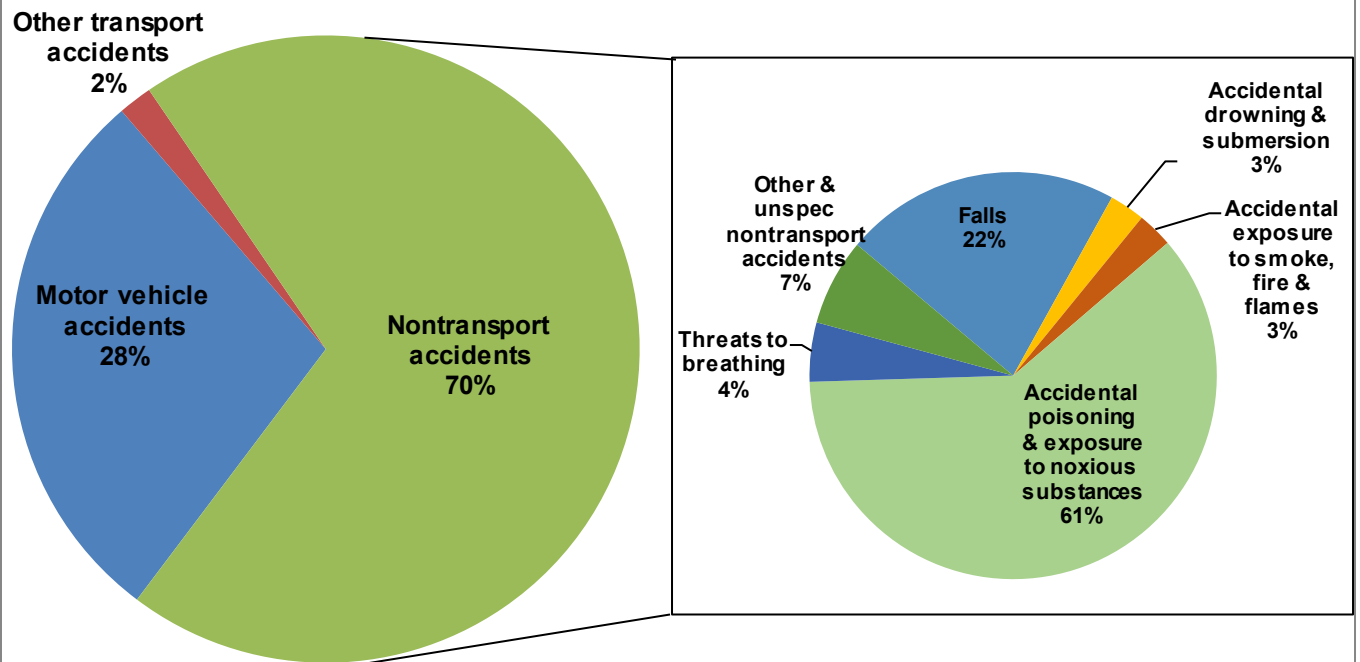
Rank	Leading Cause of Death	Number
1	Malignant neoplasms	2,011
2	Diseases of heart	1,930
3	Chronic lower respiratory diseases	507
4	Cerebrovascular diseases	469
5	Accidents (unintentional injuries)	457
6	Alzheimer's disease	266
7	Diabetes mellitus	212
8	Influenza and pneumonia	193
9	Nephritis, nephrotic syndrome & nephrosis	175
10	Septicemia	146

Delaware Health and Social Services, Division of Public Health, Delaware Health Statistics Center

MORTALITY

- Of the 457 deaths due to unintentional injury in 2015 (5.3 percent of all deaths), 28 percent were due to motor vehicle accidents and 70 percent were due to non-transport accidents. More than half of the 319 non-transport accidents were caused by unintentional poisonings; the majority (60 percent) of unintentional poisonings were drug-induced poisonings.
- For the seventh year, unintentional poisonings surpassed motor vehicle injuries and became the leading cause of unintentional injury death in 2015.
 - Poisonings caused the most unintentional injuries for white males and females. The second highest unintentional injuries were motor vehicle traffic accidents for white males and falls for white females.
 - Poisoning caused the most unintentional injuries for black females and the second highest for black males. Motor vehicle traffic accidents were the highest unintentional injuries for black males and the second highest for black females.
- In 2011-2015, accidents were the number one cause of deaths for people 1-44 years of age, and they were responsible for 40 percent of all deaths of people 15-24 years of age. For decedents ages 15-24, accidents, homicides, and suicides were the three most frequent causes of death and accounted for more than three-quarters of total deaths.

Figure 46. Accidental Causes of Death by Specific Cause of Injury Delaware, 2015

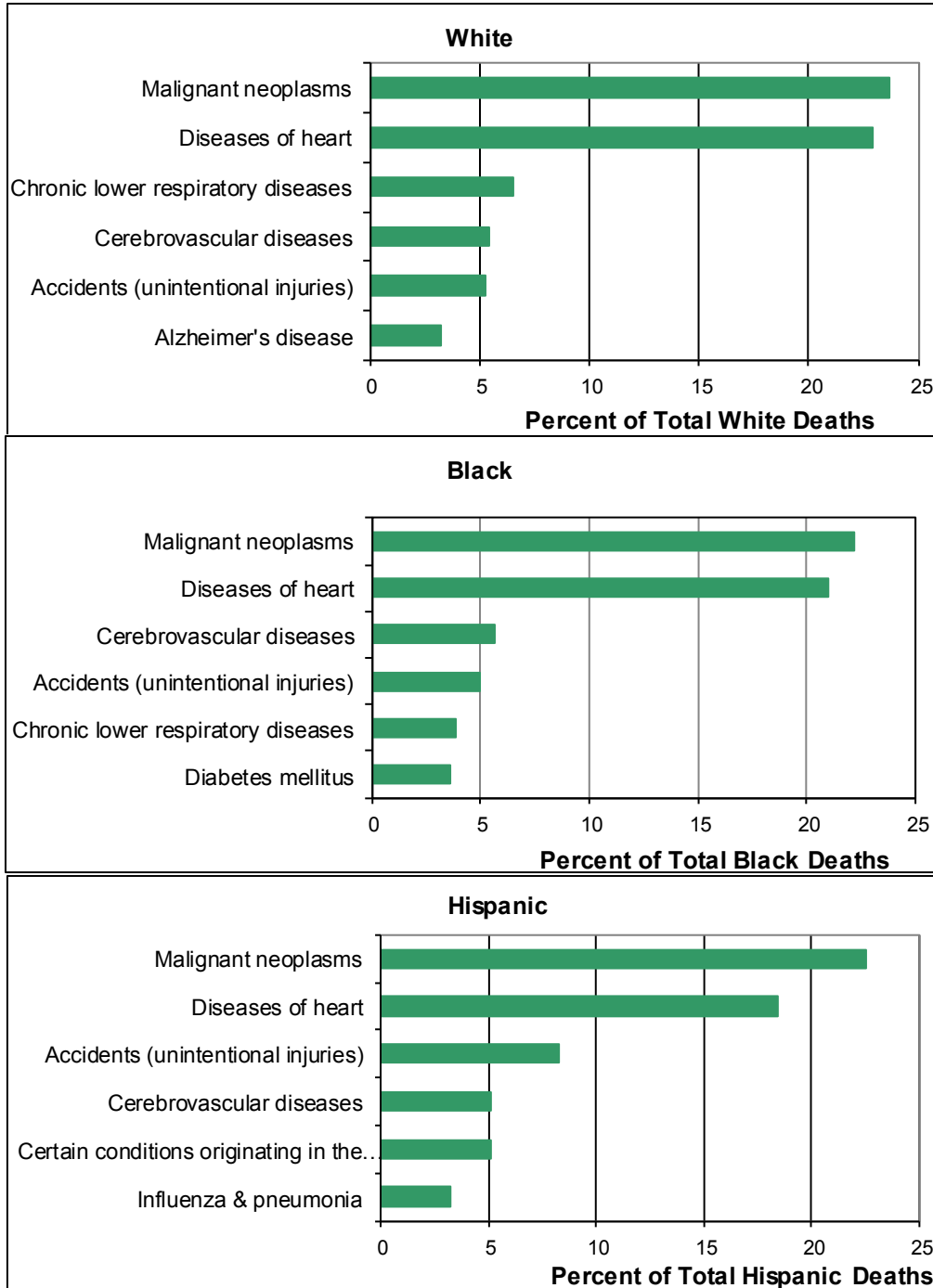


Note: Classification of causes of death are specified in the Technical Notes and Appendices section of the report.

Source: Delaware Health and Social Services, Division of Public Health, Delaware Health Statistics Center

The leading causes of death varied by race and ethnic group. In 2015, the most common causes of death for white, black, and Hispanic Delawareans were:

Figure 47. Leading Causes of Death by Race and Ethnicity, Delaware, 2015



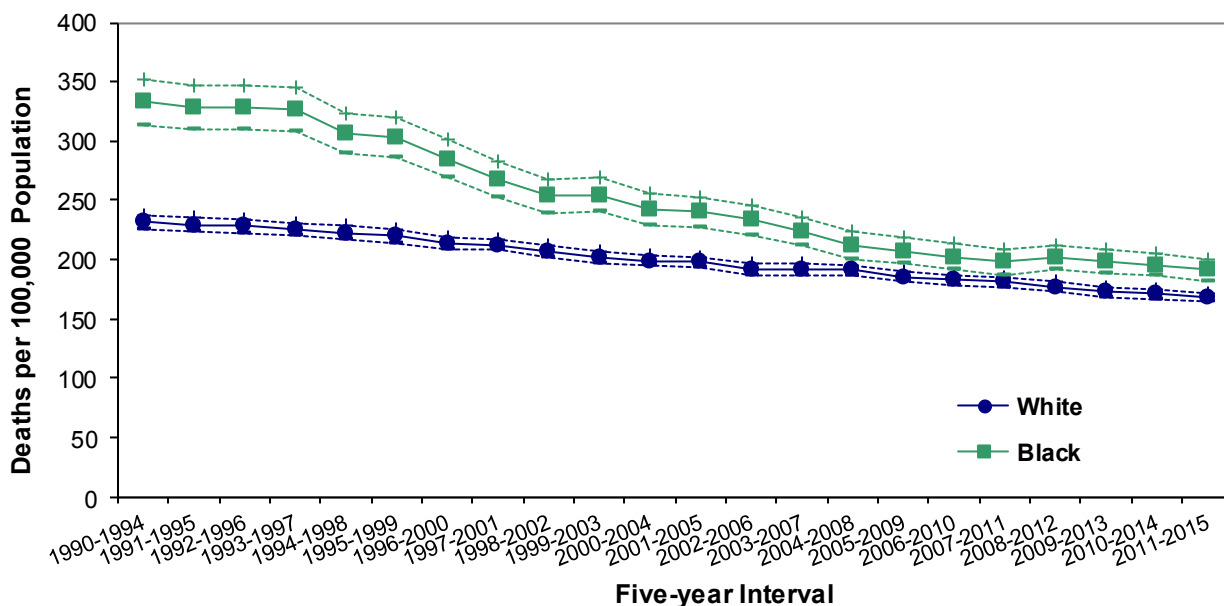
Source: Delaware Health and Social Services, Division of Public Health, Delaware Health Statistics Center

MORTALITY

Cancer mortality rates have decreased in all three counties since the early 1990s. In 2011-2015, the five-year age-adjusted cancer mortality rates were 156.9 in Sussex County, 169 in New Castle County and in Kent County 198.8 deaths per 100,000 population. The cancer mortality rate in Wilmington exceeded all counties at 214.4 deaths per 100,000 population.

Cancer mortality rates for black and white decedents followed the same declining trend, and though the gap between black and white cancer mortality rates has narrowed, black cancer mortality rates in 2011-2015 remained higher than white rates (191.4 and 168.3 deaths per 100,000 population).

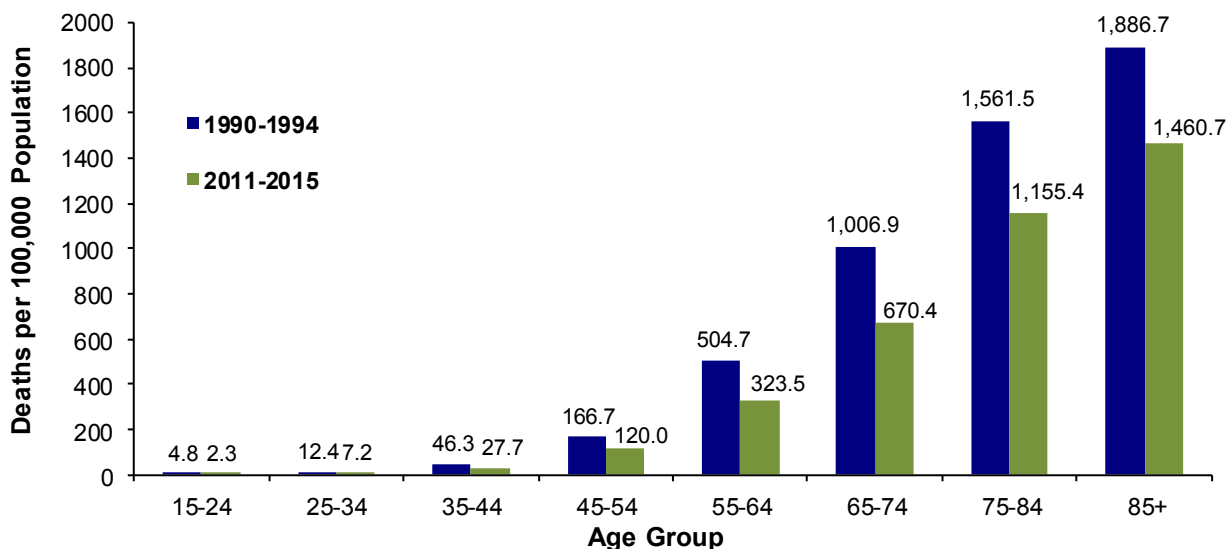
Figure 48. Five-year Age-Adjusted Cancer Mortality Rates by Race, Delaware, 1990-2015



Source: Delaware Health and Social Services, Division of Public Health, Delaware Health Statistics Center

The same decreases seen in the age-adjusted cancer mortality rates were reflected in the age-specific rates. Cancer mortality rates declined for all age groups between 1990-1994 and 2011-2015. The 15-24 and 25-34 age groups experienced the largest decreases.

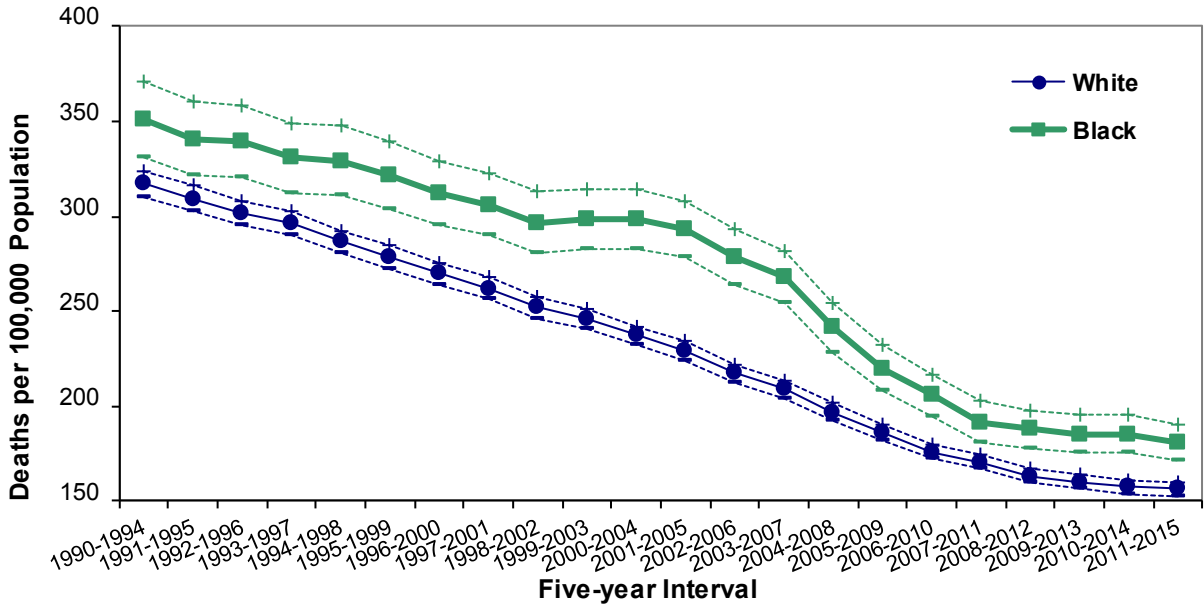
Figure 49. Five-year Average Age-Specific Cancer Mortality Rates, Delaware, 1990-1994 and 2011-2015



Delaware Health and Social Services, Division of Public Health, Delaware Health Statistics Center

Heart disease was the second most common cause of death for both black and white Delawareans in 2011-2015. Both black and white heart disease mortality rates have declined significantly since 1990-1994, with white rates declining 50.7 percent and black rates declining 48.3 percent.

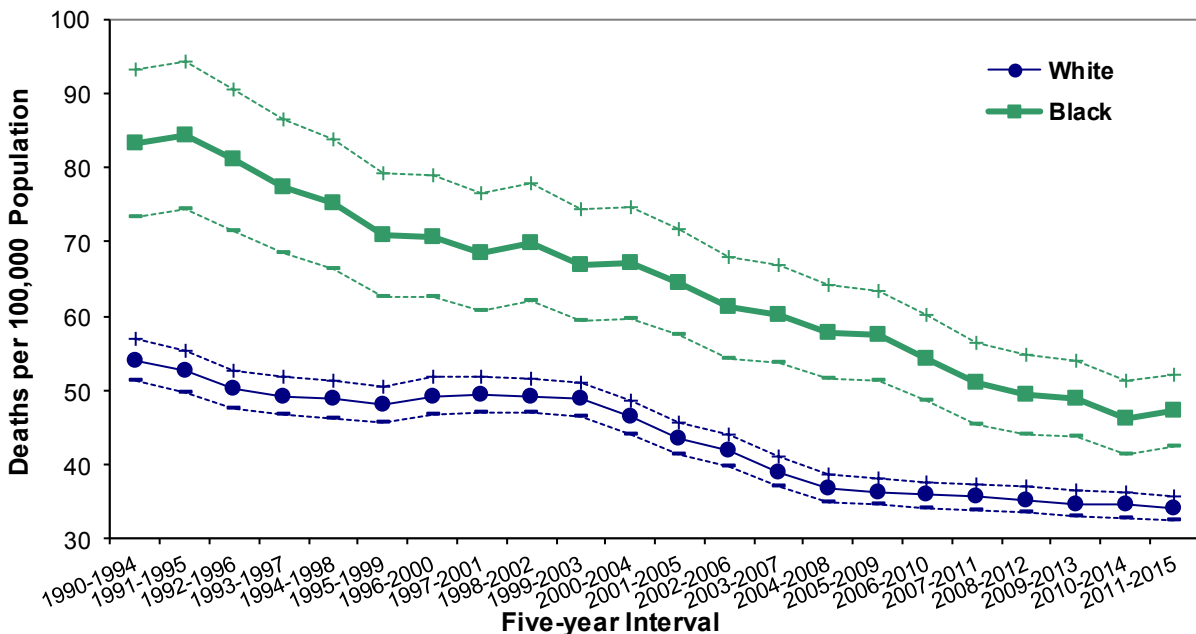
Figure 50. Five-year Age-Adjusted Heart Disease Mortality Rates by Race, Delaware, 1990-2015



Source: Delaware Health and Social Services, Division of Public Health, Delaware Health Statistics Center

Stroke mortality rates for both races continued their declining trends between 1990-1994 and 2011-2015, with white rates decreasing 37 percent and black rates declining 43 percent. In 2011-2015, the black stroke mortality rate of 47.2 deaths per 100,000 population remained approximately 38 percent higher than the white rate of 34.1 deaths per 100,000 population.

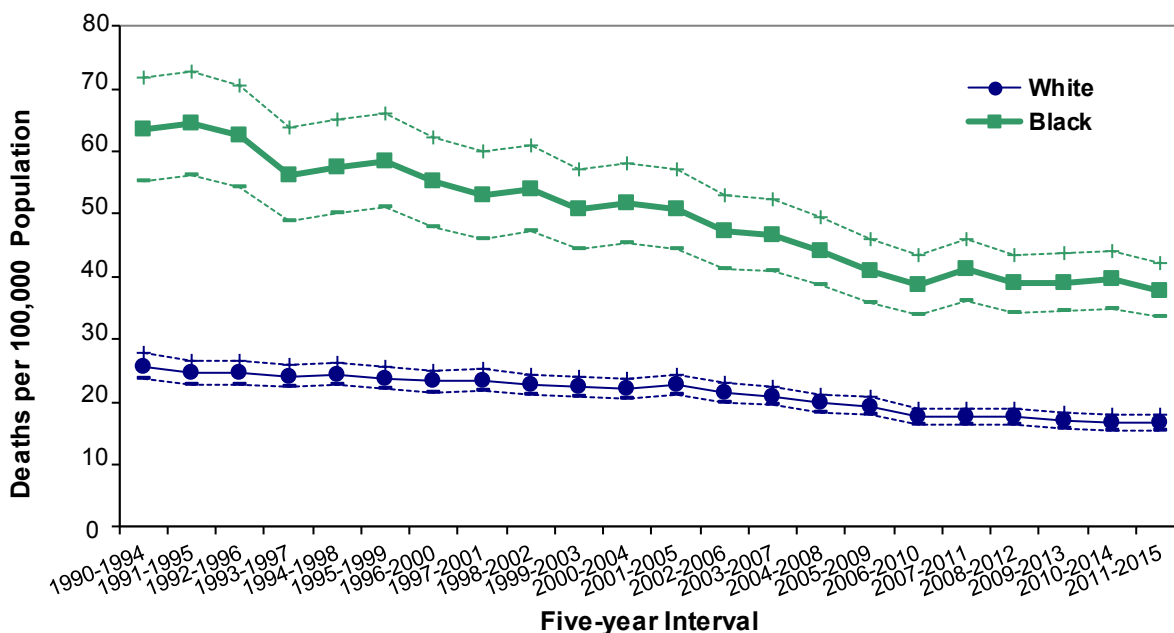
Figure 51. Five-year Age-Adjusted Stroke Mortality Rates by Race, Delaware, 1990-2015



Source: Delaware Health and Social Services, Division of Public Health, Delaware Health Statistics Center

Though black mortality rates for diabetes have declined 41 percent since 1990-1994, their rates were more than double that of whites in 2011-2015.

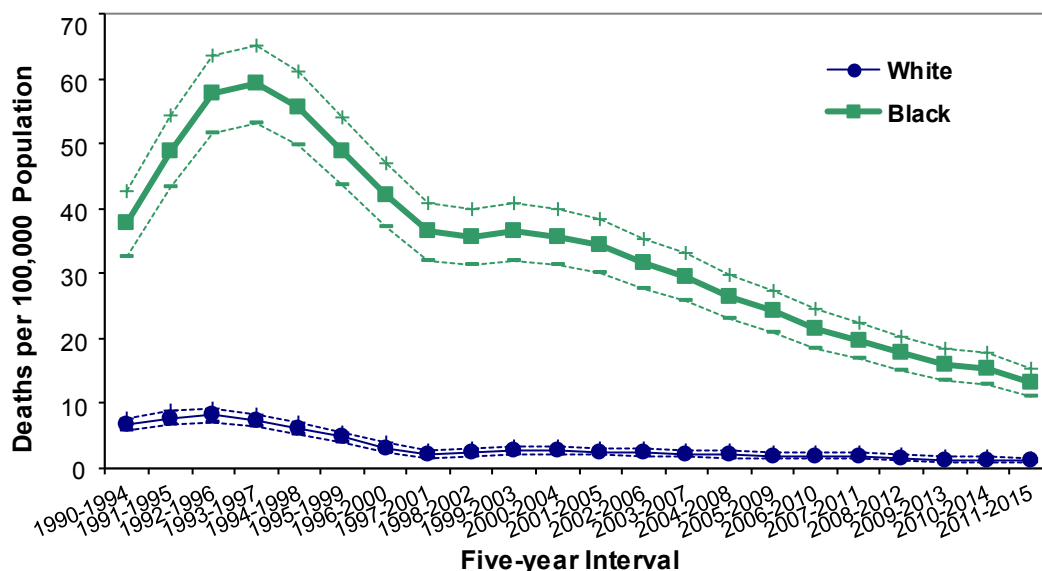
Figure 52. Five-year Age-Adjusted Diabetes Mortality Rates by Race, Delaware, 1990-2015



Source: Delaware Health and Social Services, Division of Public Health, Delaware Health Statistics Center

HIV/AIDS mortality has disproportionately affected Delaware’s black population. Despite black HIV/AIDS mortality rates decreasing significantly since the 1993-1997 peak, their 2011-2015 mortality rate of 13.2 deaths per 100,000 population was more than 10 times that of whites. Though they made up only 22 percent of the total Delaware population in 2011-2015, black decedents accounted for 76 percent of all deaths due to HIV/AIDS.

Figure 53. Five-year Age-Adjusted HIV/AIDS Mortality Rates by Race, Delaware, 1990-2015

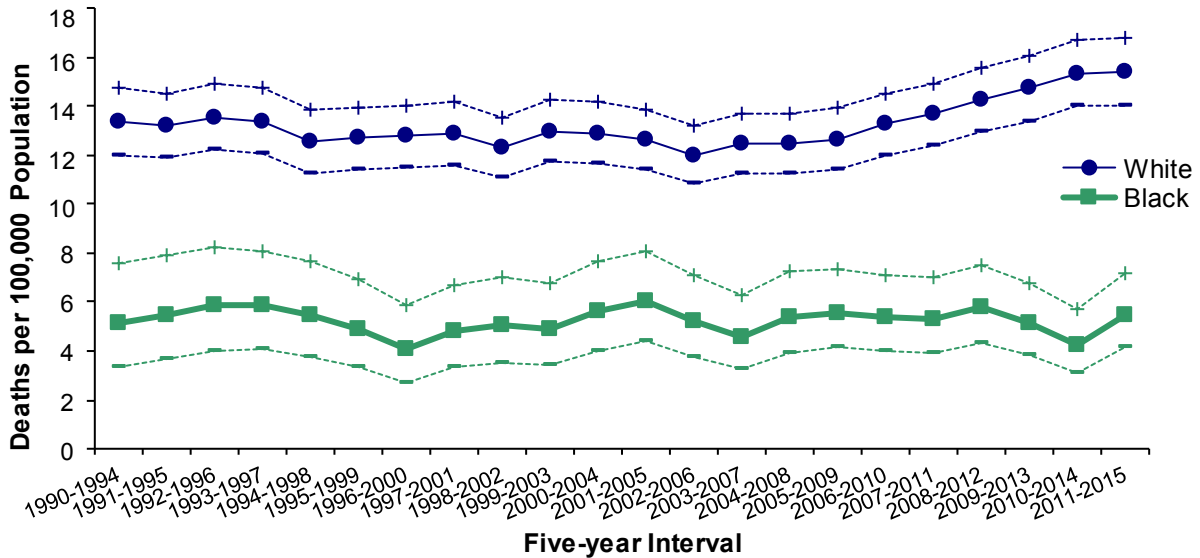


In 2011-2015, HIV was the tenth leading cause of death for black Delawareans; it ranked ninth for black males and twelfth for black females.

Source: Delaware Health and Social Services, Division of Public Health, Delaware Health Statistics Center

Suicide mortality trends for white populations increased 16 percent between 1990-1994 and 2011-2015, with the white rate (15.4 deaths per 100,000 population) nearly triple the black rate (5.5 deaths per 100,000 population).

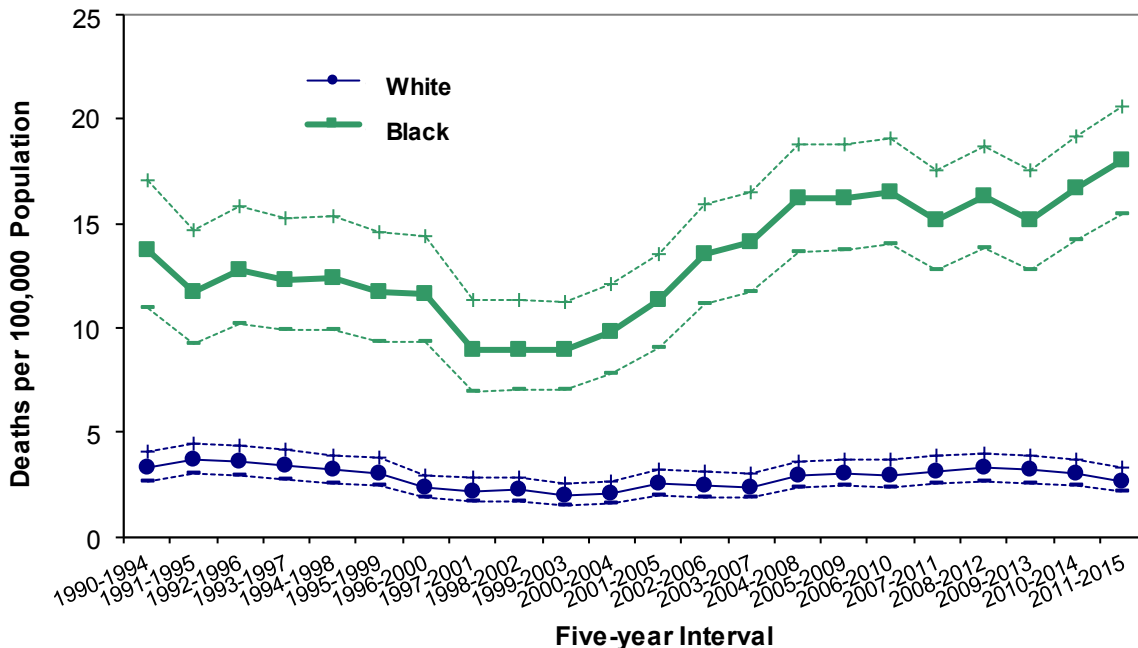
Figure 54. Five-year Age-Adjusted Suicide Mortality Rates by Race, Delaware, 1990-2015



Source: Delaware Health and Social Services, Division of Public Health, Delaware Health Statistics Center

After declining throughout most of the 1990s and reaching their lowest point in 1999-2003, homicide mortality rates have risen 86.4 percent to 6.6 deaths per 100,000 population in 2011-2015. During the same time period, the black homicide rate increased 102 percent to 18.0 and the white homicide mortality rate increased 33 percent to 2.7 deaths per 100,000 population.

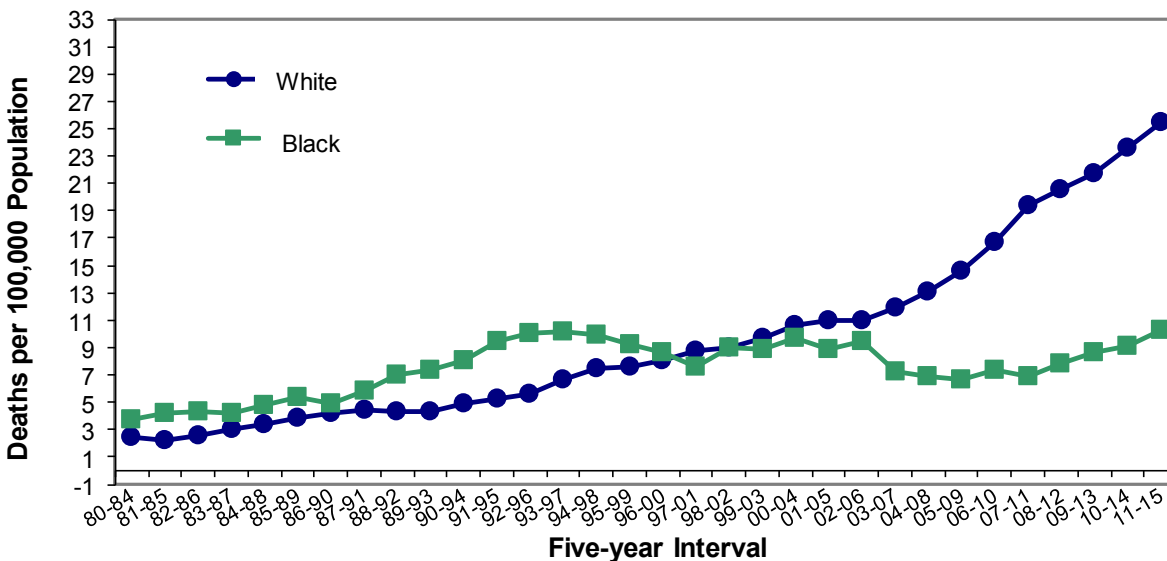
Figure 55. Five-year Age-Adjusted Homicide Mortality Rates by Race, Delaware, 1990-2015



Source: Delaware Health and Social Services, Division of Public Health, Delaware Health Statistics Center

Though black mortality rates for drug-induced deaths were historically higher than white rates, in 1994-1998 they began a four-year decline that moved them just below the white rates by 1997-2001. Since then, white mortality rates remained higher and continued to rise. By 2011-2015, the white drug-induced mortality rate (25.4 deaths per 100,000 population) was more than twice the black rate (10.3).

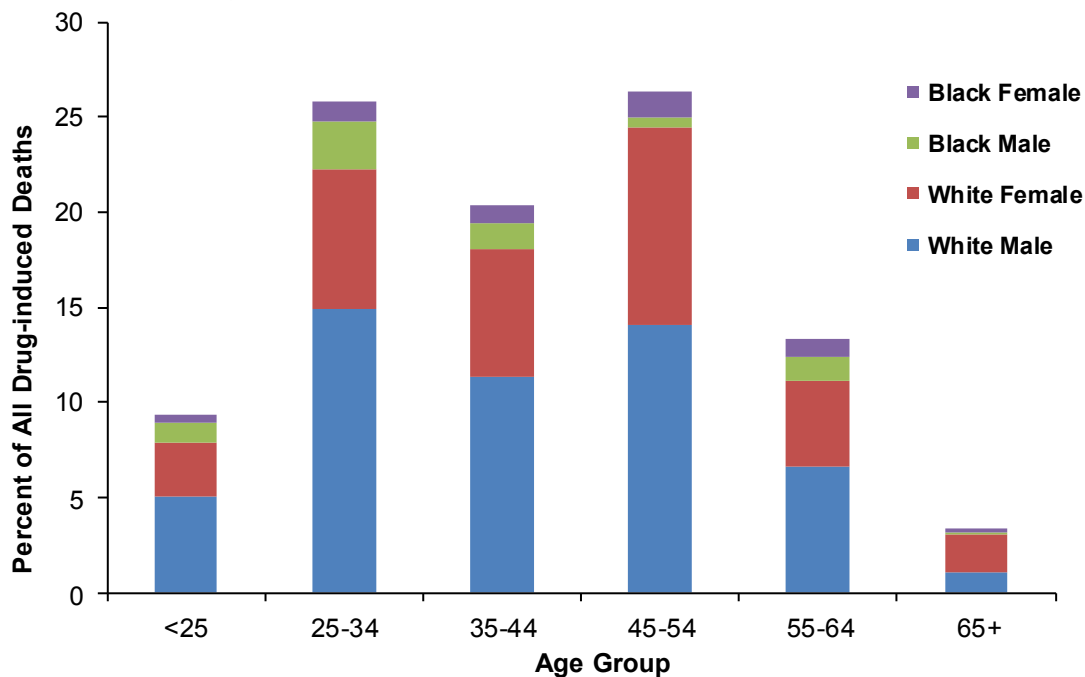
Figure 56. Five-year Age-adjusted Mortality Rates for Drug-Induced Deaths by Race, Delaware, 1980-2015



Source: Delaware Health and Social Services, Division of Public Health, Delaware Health Statistics Center

The white population has a significantly higher percentage of drug-induced deaths than the black population. In 2011-2015, 53 percent of all drug-induced deaths were white males. Of those deaths, 29 percent were white males ages 25-34 and 45-54. White females ages 45-54 accounted for 10.4 percent of drug-induced deaths. In contrast, black males ages 25-34 and 45-54, and black females ages 45-54 were only 4 percent of the drug-induced deaths.

Figure 57. Distribution of Drug-induced Deaths by Race, Sex, and Age Group, Delaware, 2011-2015



Source: Delaware Health and Social Services, Division of Public Health, Delaware Health Statistics Center

TABLE F-1. NUMBER OF DEATHS BY RACE, COUNTIES/CITY OF WILMINGTON, U.S., 5 B8 DELAWARE, 2002-2015

Area/ Race	2002	2003	2004	2005	2006	2007	2008	2009	2010	2011	2012	2013	2014	2015
U.S.														
All Races	2443387	2448288	2397615	2448017	2426264	2423712	2471984	2437163	2468435	2515458	2543279	2596993	2626418	2712630
White	2102589	2103714	2056643	2098097	2077549	2074151	2120233	2086355	2114749	2156077	2175178	2217103	2237880	2306861
Black	290051	291300	287315	292808	289971	289585	289072	286623	286959	290100	295222	302969	308960	320072
Other	50747	53274	53657	57112	58744	59976	62679	64185	66727	69281	72879	76921	79578	85697
Delaware														
All Races	6860	7067	7124	7424	7144	7246	7602	7498	7667	7816	7873	7967	8252	8580
White	5694	5782	5862	6129	5856	5985	6309	6113	6274	6412	6348	6498	6677	6883
Black	1111	1241	1204	1235	1225	1181	1217	1270	1258	1256	1392	1295	1435	1443
Other	55	44	58	60	63	80	76	115	135	148	133	174	140	254
Kent														
All Races	1113	1114	1154	1250	1219	1255	1367	1379	1345	1368	1462	1422	1524	1592
White	916	878	948	1017	967	1018	1133	1096	1080	1092	1159	1128	1196	1232
Black	187	224	193	224	234	219	220	263	231	239	273	250	299	304
Other	10	12	13	9	18	18	14	20	34	37	30	44	29	56
New Castle														
All Races	3996	4129	4146	4229	4039	4101	4290	4100	4221	4394	4260	4338	4334	4547
White	3244	3299	3324	3381	3212	3294	3441	3234	3316	3486	3270	3392	3354	3476
Black	718	809	793	809	794	771	802	799	828	820	909	847	901	909
Other	34	21	29	39	33	36	47	67	77	88	81	99	79	162
Wilmington														
All Races	779	843	782	765	728	705	726	692	713	697	691	651	729	666
White	392	413	358	362	337	345	334	329	294	320	297	273	326	277
Black	380	430	419	401	385	359	389	360	406	362	383	364	395	359
Other	7	0	5	2	6	1	3	3	13	15	11	14	8	30
Balance of NC County														
All Races	3217	3286	3364	3464	3311	3396	3564	3408	3508	3697	3569	3687	3605	3881
White	2852	2886	2966	3019	2875	2949	3107	2905	3022	3166	2973	3119	3028	3199
Black	338	379	374	408	409	412	413	439	422	458	526	483	506	550
Other	27	21	24	37	27	35	44	64	64	73	70	85	71	132
Sussex														
All Races	1751	1824	1824	1945	1886	1890	1945	2019	2101	2054	2151	2207	2394	2441
White	1534	1605	1590	1731	1677	1673	1735	1783	1878	1834	1919	1978	2127	2175
Black	206	208	218	202	197	191	195	208	199	197	210	198	235	230
Other	11	11	16	12	12	26	15	28	24	23	22	31	32	36

Sources: Delaware Health and Social Services, Division of Public Health, Delaware Health Statistics Center
National Center for Health Statistics

**TABLE F-2. NUMBER OF DEATHS BY AGE, RACE, AND HISPANIC ORIGIN, COUNTIES
CITY OF WILMINGTON, 5 B8 DELAWARE, 2015**

Area/ Age	Race									Hispanic Origin ²
	All Races	White	Black	American Indian ¹	Asian or Pacific Islander (API)				All Other	
					Chinese	Japanese	Filipino	Other API		
Delaware	8580	6883	1443	18	10	4	7	52	163	217
<1	100	44	39	0	0	0	0	2	15	18
1-4	13	7	5	0	0	0	0	0	1	1
5-14	9	5	2	0	0	0	0	0	2	1
15-24	90	43	40	0	0	0	0	0	7	8
25-34	180	121	51	0	0	0	1	2	5	10
35-44	230	160	57	0	0	0	2	1	10	12
45-54	547	377	140	1	3	0	1	4	21	26
55-64	1115	835	251	4	0	0	0	6	19	27
65-74	1605	1267	290	4	1	0	1	10	32	39
75+	4691	4024	568	9	6	4	2	27	51	75
Unknown	0	0	0	0	0	0	0	0	0	0
Kent	1592	1232	304	7	3	2	2	3	39	49
<1	23	9	9	0	0	0	0	0	5	5
1-4	4	4	0	0	0	0	0	0	0	0
5-14	4	3	0	0	0	0	0	0	1	1
15-24	16	10	5	0	0	0	0	0	1	0
25-34	44	29	11	0	0	0	1	0	3	6
35-44	36	31	4	0	0	0	0	0	1	1
45-54	110	78	27	1	1	0	0	1	2	6
55-64	244	184	50	3	0	0	0	0	7	7
65-74	327	238	85	1	0	0	1	1	1	4
75+	784	646	113	2	2	2	0	1	18	19
Unknown	0	0	0	0	0	0	0	0	0	0
New Castle	4547	3476	909	0	7	1	5	45	104	139
<1	54	21	24	0	0	0	0	2	7	8
1-4	6	1	4	0	0	0	0	0	1	1
5-14	2	0	1	0	0	0	0	0	1	0
15-24	62	26	30	0	0	0	0	0	6	7
25-34	106	65	37	0	0	0	0	2	2	4
35-44	140	87	42	0	0	0	2	1	8	9
45-54	322	205	95	0	2	0	1	3	16	19
55-64	585	407	162	0	0	0	0	5	11	19
65-74	780	579	168	0	1	0	0	8	24	26
75+	2490	2085	346	0	4	1	2	24	28	46
Unknown	0	0	0	0	0	0	0	0	0	0
Wilmington	666	277	359	0	0	0	0	2	28	37
<1	10	3	4	0	0	0	0	0	3	3
1-4	1	0	1	0	0	0	0	0	0	0
5-14	1	0	1	0	0	0	0	0	0	0
15-24	20	2	16	0	0	0	0	0	2	2
25-34	24	3	21	0	0	0	0	0	0	1
35-44	21	7	14	0	0	0	0	0	0	1
45-54	54	17	32	0	0	0	0	0	5	6
55-64	103	30	70	0	0	0	0	0	3	2
65-74	106	48	53	0	0	0	0	0	5	9
75+	326	167	147	0	0	0	0	2	10	13
Unknown	0	0	0	0	0	0	0	0	0	0
Balance of NC County	3881	3199	550	0	7	1	5	43	76	102
<1	44	18	20	0	0	0	0	2	4	5
1-4	5	1	3	0	0	0	0	0	1	1
5-14	1	0	0	0	0	0	0	0	1	0
15-24	42	24	14	0	0	0	0	0	4	5
25-34	82	62	16	0	0	0	0	2	2	3
35-44	119	80	28	0	0	0	2	1	8	8
45-54	268	188	63	0	2	0	1	3	11	13
55-64	482	377	92	0	0	0	0	5	8	17
65-74	674	531	115	0	1	0	0	8	19	17
75+	2164	1918	199	0	4	1	2	22	18	33
Unknown	0	0	0	0	0	0	0	0	0	0
Sussex	2441	2175	230	11	0	1	0	4	20	29
<1	23	14	6	0	0	0	0	0	3	5
1-4	3	2	1	0	0	0	0	0	0	0
5-14	3	2	1	0	0	0	0	0	0	0
15-24	12	7	5	0	0	0	0	0	0	1
25-34	30	27	3	0	0	0	0	0	0	0
35-44	54	42	11	0	0	0	0	0	1	2
45-54	115	94	18	0	0	0	0	0	3	1
55-64	286	244	39	1	0	0	0	1	1	1
65-74	498	450	37	3	0	0	0	1	7	9
75+	1417	1293	109	7	0	1	0	2	5	10
Unknown	0	0	0	0	0	0	0	0	0	0

Notes:

1. Includes any deaths that may have occurred to Aleut and Eskimo Indians.
2. People of Hispanic origin may be of any race. See *Hispanic Origin and Race* in the Technical Notes.

Source: Delaware Health and Social Services, Division of Public Health, Delaware Health Statistics Center

**TABLE F-3. NUMBER OF DEATHS BY AGE AND RACE, COUNTIES/CITY OF WILMINGTON, 5 B8 'DELAWARE, &&%
BOTH SEXES**

Area/ Race	Age of Decedent													
	Total	< 1	1-4	5-9	10-14	15-19	20-24	25-34	35-44	45-54	55-64	65-74	75+	Unk
Delaware														
All Races	8580	100	13	3	6	26	64	180	230	547	1115	1605	4691	0
White	6883	44	7	1	4	12	31	121	160	377	835	1267	4024	0
Black	1443	39	5	1	1	13	27	51	57	140	251	290	568	0
Other	254	17	1	1	1	1	6	8	13	30	29	48	99	0
Kent														
All Races	1592	23	4	0	4	6	10	44	36	110	244	327	784	0
White	1232	9	4	0	3	3	7	29	31	78	184	238	646	0
Black	304	9	0	0	0	3	2	11	4	27	50	85	113	0
Other	56	5	0	0	1	0	1	4	1	5	10	4	25	0
New Castle														
All Races	4547	54	6	1	1	18	44	106	140	322	585	780	2490	0
White	3476	21	1	0	0	7	19	65	87	205	407	579	2085	0
Black	909	24	4	0	1	10	20	37	42	95	162	168	346	0
Other	162	9	1	1	0	1	5	4	11	22	16	33	59	0
Wilmington														
All Races	666	10	1	0	1	8	12	24	21	54	103	106	326	0
White	277	3	0	0	0	1	1	3	7	17	30	48	167	0
Black	359	4	1	0	1	7	9	21	14	32	70	53	147	0
Other	30	3	0	0	0	0	2	0	0	5	3	5	12	0
Balance of NC County														
All Races	3881	44	5	1	0	10	32	82	119	268	482	674	2164	0
White	3199	18	1	0	0	6	18	62	80	188	377	531	1918	0
Black	550	20	3	0	0	3	11	16	28	63	92	115	199	0
Other	132	6	1	1	0	1	3	4	11	17	13	28	47	0
Sussex														
All Races	2441	23	3	2	1	2	10	30	54	115	286	498	1417	0
White	2175	14	2	1	1	2	5	27	42	94	244	450	1293	0
Black	230	6	1	1	0	0	5	3	11	18	39	37	109	0
Other	36	3	0	0	0	0	0	0	1	3	3	11	15	0

Source: Delaware Health and Social Services, Division of Public Health, Delaware Health Statistics Center

TABLE F-4. NUMBER OF DEATHS BY AGE AND RACE , COUNTIES-CITY OF WILMINGTON, '5 B8 '89 @ K 5 F9ž&\$%)

MALES

Area/ Race	Age of Decedent													
	Total	< 1	1-4	5-9	10-14	15-19	20-24	25-34	35-44	45-54	55-64	65-74	75+	Unk
Delaware														
All Races	4371	54	6	2	2	25	49	119	132	323	682	910	2067	0
White	3523	19	4	1	0	11	25	79	95	244	516	738	1791	0
Black	705	23	1	0	1	13	21	36	31	60	144	146	229	0
Other	143	12	1	1	1	1	3	4	6	19	22	26	47	0
Kent														
All Races	808	14	2	0	1	6	7	23	21	65	145	174	350	0
White	648	4	2	0	0	3	6	17	17	53	115	135	296	0
Black	139	6	0	0	0	3	1	5	4	10	24	38	48	0
Other	21	4	0	0	1	0	0	1	0	2	6	1	6	0
New Castle														
All Races	2275	28	3	1	1	18	35	71	82	190	356	424	1066	0
White	1726	9	1	0	0	7	15	38	52	133	246	323	902	0
Black	450	13	1	0	1	10	17	30	24	42	97	84	131	0
Other	99	6	1	1	0	1	3	3	6	15	13	17	33	0
Wilmington														
All Races	312	5	1	0	1	8	9	18	14	32	63	53	108	0
White	115	2	0	0	0	1	1	2	4	10	19	24	52	0
Black	178	1	1	0	1	7	7	16	10	17	43	27	48	0
Other	19	2	0	0	0	0	1	0	0	5	1	2	8	0
Balance of NC County														
All Races	1963	23	2	1	0	10	26	53	68	158	293	371	958	0
White	1611	7	1	0	0	6	14	36	48	123	227	299	850	0
Black	272	12	0	0	0	3	10	14	14	25	54	57	83	0
Other	80	4	1	1	0	1	2	3	6	10	12	15	25	0
Sussex														
All Races	1288	12	1	1	0	1	7	25	29	68	181	312	651	0
White	1149	6	1	1	0	1	4	24	26	58	155	280	593	0
Black	116	4	0	0	0	0	3	1	3	8	23	24	50	0
Other	23	2	0	0	0	0	0	0	0	2	3	8	8	0

Source: Delaware Health and Social Services, Division of Public Health, Delaware Health Statistics Center

TABLE F-5. NUMBER OF DEATHS BY AGE AND RACE, COUNTY/CITY OF WILMINGTON, 5 B8 DELAWARE, 2015

FEMALES

Area/ Race	Age of Decedent													
	Total	< 1	1-4	5-9	10-14	15-19	20-24	25-34	35-44	45-54	55-64	65-74	75+	Unk
Delaware														
All Races	4209	46	7	1	4	1	15	61	98	224	433	695	2624	0
White	3360	25	3	0	4	1	6	42	65	133	319	529	2233	0
Black	738	16	4	1	0	0	6	15	26	80	107	144	339	0
Other	111	5	0	0	0	0	3	4	7	11	7	22	52	0
Kent														
All Races	784	9	2	0	3	0	3	21	15	45	99	153	434	0
White	584	5	2	0	3	0	1	12	14	25	69	103	350	0
Black	165	3	0	0	0	0	1	6	0	17	26	47	65	0
Other	35	1	0	0	0	0	1	3	1	3	4	3	19	0
New Castle														
All Races	2272	26	3	0	0	0	9	35	58	132	229	356	1424	0
White	1750	12	0	0	0	0	4	27	35	72	161	256	1183	0
Black	459	11	3	0	0	0	3	7	18	53	65	84	215	0
Other	63	3	0	0	0	0	2	1	5	7	3	16	26	0
Wilmington														
All Races	354	5	0	0	0	0	3	6	7	22	40	53	218	0
White	162	1	0	0	0	0	0	1	3	7	11	24	115	0
Black	181	3	0	0	0	0	2	5	4	15	27	26	99	0
Other	11	1	0	0	0	0	1	0	0	0	2	3	4	0
Balance of NC County														
All Races	1918	21	3	0	0	0	6	29	51	110	189	303	1206	0
White	1588	11	0	0	0	0	4	26	32	65	150	232	1068	0
Black	278	8	3	0	0	0	1	2	14	38	38	58	116	0
Other	52	2	0	0	0	0	1	1	5	7	1	13	22	0
Sussex														
All Races	1153	11	2	1	1	1	3	5	25	47	105	186	766	0
White	1026	8	1	0	1	1	1	3	16	36	89	170	700	0
Black	114	2	1	1	0	0	2	2	8	10	16	13	59	0
Other	13	1	0	0	0	0	0	0	1	1	0	3	7	0

Source: Delaware Health and Social Services, Division of Public Health, Delaware Health Statistics Center

TABLE F-6. MORTALITY TRENDS BY RACE, ETHNICITY, GENDER, AND AGE, DELAWARE, 2005-2015

CHARACTERISTIC	Year										
	2005	2006	2007	2008	2009	2010	2011	2012	2013	2014	2015
Resident Deaths											
Number	7424	7144	7246	7602	7498	7667	7816	7873	7967	8252	8580
Crude Rate	878.4	831.4	831.2	860.1	840.8	852.1	861.7	860.8	862.5	884.3	909.8
AADR ²	818.1	762.7	748.3	760.5	730.8	727.8	726.4	709.7	696.6	703.3	713.5
Decedent's Race/Ethnicity											
White											
Number	6129	5856	5985	6309	6113	6274	6412	6348	6498	6677	6883
Percent	82.6%	82.0%	82.6%	83.0%	81.5%	81.8%	82.0%	80.6%	81.6%	80.9%	80.2%
AADR ²	794.6	741.0	734.8	753.4	713.6	718.2	721.8	695.3	692.4	693.7	700.4
Black											
Number	1235	1225	1181	1217	1270	1258	1256	1392	1295	1435	1443
Percent	16.6%	17.1%	16.3%	16.0%	16.9%	16.4%	16.1%	17.7%	16.3%	17.4%	16.8%
AADR ²	1024.3	943.9	889.2	860.7	866.5	834.4	795.7	858.5	769.4	843.9	814.0
Hispanic ¹											
Number	121	126	178	189	164	142	144	148	200	234	217
Percent	1.6%	1.8%	2.5%	2.5%	2.2%	1.9%	1.8%	1.9%	2.5%	2.8%	2.5%
AADR ²	624.5	485.8	775.5	789.6	691.0	550.0	536.1	504.9	706.3	824.4	690.6
Decedent's Gender											
Female											
Number	3746	3590	3614	3850	3782	3802	3946	4015	3936	4062	4209
Percent	50.5%	50.3%	49.9%	50.6%	50.4%	49.6%	50.5%	51.0%	49.4%	49.2%	49.1%
AADR ²	651.9	647.3	630.3	651.9	624.0	610.8	625.0	613.9	588.0	591.9	600.7
Male											
Number	3678	3554	3632	3752	3716	3865	3870	3858	4031	4190	4371
Percent	49.5%	49.7%	50.1%	49.4%	49.6%	50.4%	49.5%	49.0%	50.6%	50.8%	50.9%
AADR ²	894.3	905.9	893.5	894.3	860.2	869.9	849.7	826.0	830.3	842.0	850.1
Decedent's age											
<1											
Number	106	99	91	101	91	88	98	84	68	74	100
Percent	1.4%	1.4%	1.3%	1.3%	1.2%	1.1%	1.3%	1.1%	0.9%	0.9%	1.2%
1-14											
Number	26	20	15	23	27	18	28	30	29	22	22
Percent	0.4%	0.3%	0.2%	0.3%	0.4%	0.2%	0.4%	0.4%	0.4%	0.3%	0.3%
15-24											
Number	78	92	88	91	92	97	86	89	82	88	90
Percent	1.1%	1.3%	1.2%	1.2%	1.2%	1.3%	1.1%	1.1%	1.0%	1.1%	1.0%
25-44											
Number	375	427	385	400	359	362	356	388	359	375	410
Percent	5.1%	6.0%	5.3%	5.3%	4.8%	4.7%	4.6%	4.9%	4.5%	4.5%	4.8%
45-64											
Number	1406	1410	1418	1552	1529	1578	1579	1620	1739	1610	1662
Percent	18.9%	19.7%	19.6%	20.4%	20.4%	20.6%	20.2%	20.6%	21.8%	19.5%	19.4%
65-74											
Number	1272	1232	1238	1276	1313	1307	1357	1325	1385	1546	1605
Percent	17.1%	17.2%	17.1%	16.8%	17.5%	17.0%	17.4%	16.8%	17.4%	18.7%	18.7%
75-84											
Number	2160	1960	2022	2043	1944	1976	2077	1897	1931	2048	2097
Percent	29.1%	27.4%	27.9%	26.9%	25.9%	25.8%	26.6%	24.1%	24.2%	24.8%	24.4%
85+											
Number	2001	1904	1985	2116	2143	2241	2235	2440	2374	2489	2594
Percent	27.0%	26.7%	27.4%	27.8%	28.6%	29.2%	28.6%	31.0%	29.8%	30.2%	30.2%

Notes:

1. Because of the small numbers of Hispanic deaths and the resulting variability in annual mortality rates, Hispanic mortality rates should be interpreted with caution.
2. Age-Adjusted Death Rate per 100,000, adjusted to 2000 U.S. Standard Population.
3. Figures for decedent's age may not equal total number of annual deaths due to deaths of unknown age.

Sources: *Delaware Health and Social Services, Division of Public Health, Delaware Health Statistics Center*
U.S. Census

TABLE F-7. NUMBER OF DEATHS AND MEDIAN AGE AT DEATH BY SEX FOR TWENTY LEADING CAUSES, ALCOHOL-INDUCED DEATHS, AND DRUG-INDUCED DEATHS, DELAWARE, 2015

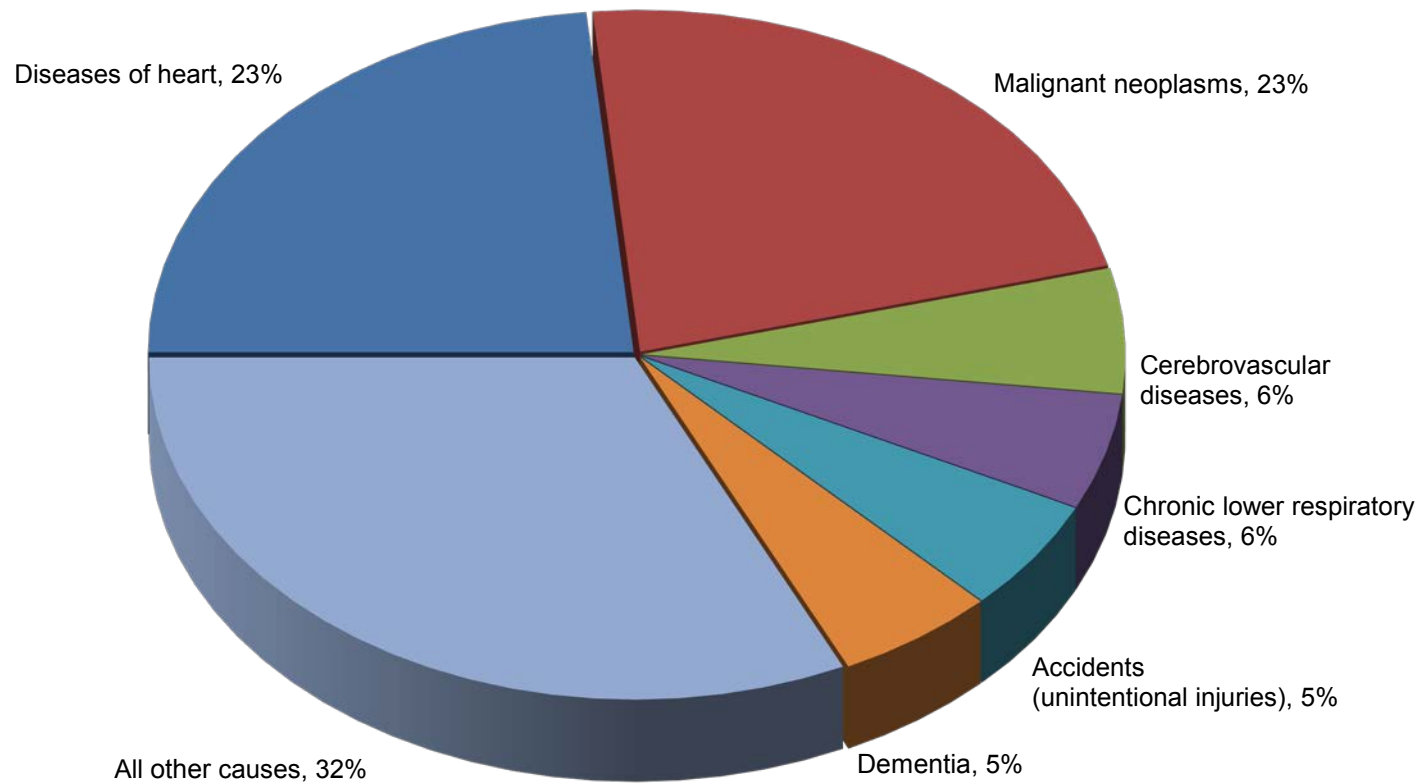
Cause of Death ¹	Deaths		Median Age at Death	
	Number	Percent	Male	Female
All causes	8,580	100.0	73	80
Malignant neoplasms	2,011	23.4	73	72
Diseases of heart	1,930	22.5	77	84
Chronic lower respiratory diseases	507	5.9	77	79
Cerebrovascular diseases	469	5.5	81	86
Accidents (unintentional injuries)	457	5.3	47	52
Dementia	456	5.3	86	89
Alzheimer's disease	266	3.1	85	89
Diabetes mellitus	212	2.5	69	74
Influenza & pneumonia	193	2.2	82	87
Nephritis, nephrotic syndrome & nephrosis	175	2.0	75	77
Septicemia	146	1.7	78	76
Intentional self-harm (suicide)	122	1.4	43	46
Chronic liver disease & cirrhosis	111	1.3	60	63
Other diseases of respiratory system	96	1.1	72	82
Parkinson's disease	83	1.0	82	85
Other diseases of circulatory system	74	0.9	72	88
Pneumonitis due to solids & liquids	73	0.9	83	89
Certain conditions originating in the perinatal period	67	0.8	0	0
Assault (homicide)	66	0.8	29	34
Essential (primary) hypertension & hypertensive renal disease	63	0.7	77	91
Alcohol-induced deaths²	80	0.9	54	53
Drug-induced deaths²	216	2.5	38	42

Notes:

1. Classified according to ICD-10 Codes, Tenth Revision. See Appendix E for listing of ICD-10 Codes.
2. Included in selected categories.

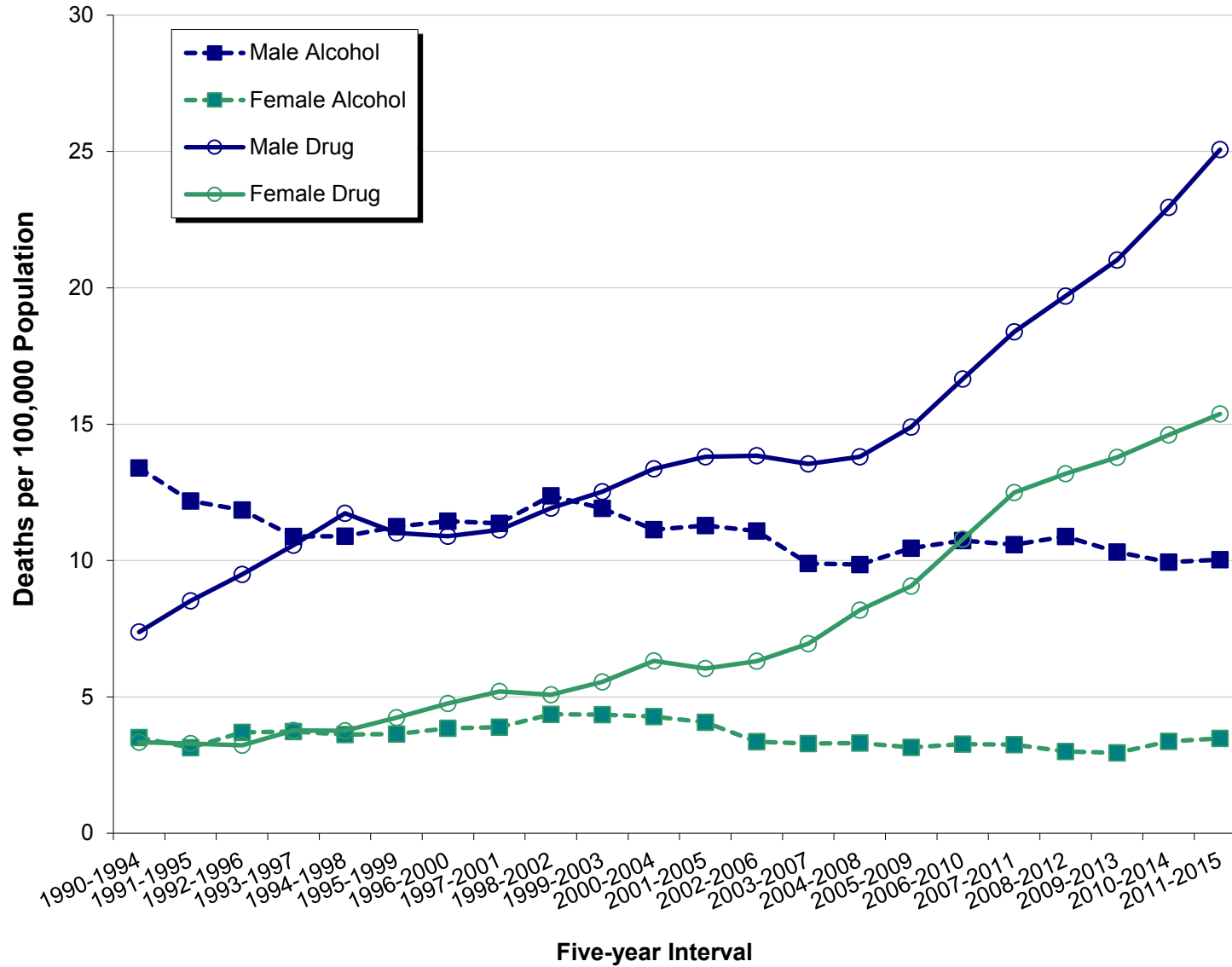
Source: Delaware Health and Social Services, Division of Public Health, Delaware Health Statistics Center

Figure F-1. Leading Causes of Death, Delaware, 2015



Source: Delaware Health and Social Services, Division of Public Health, Delaware Health Statistics Center

Figure F-2. Five-year Age-adjusted Drug- and Alcohol-Induced Mortality Rates, by Sex, Delaware, 1990-2015



Source: Delaware Health and Social Services, Division of Public Health, Delaware Health Statistics Center

TABLE F-8. LEADING CAUSES OF DEATH, COUNTIES, CITY OF WILMINGTON, AND DELAWARE, 2011-2015

Kent

Cause of Death*	Deaths	
	#	%
Malignant neoplasms	1816	24.6
Diseases of heart	1720	23.3
Chronic lower respiratory diseases	444	6.0
Accidents (unintentional injuries)	386	5.2
Cerebrovascular diseases	348	4.7
Diabetes mellitus	196	2.7
Alzheimer's disease	187	2.5
Nephritis, nephrotic syndrome & nephrosis	154	2.1
Septicemia	151	2.0
Influenza & pneumonia	130	1.8
Intentional self-harm (suicide)	120	1.6
Chronic liver disease & cirrhosis	85	1.2
Essential (primary) hypertension & hypertensive renal disease	59	0.8
In situ neoplasms, benign neoplasms & neoplasms of uncertain behavior	56	0.8
Parkinson's disease	54	0.7
Assault (homicide)	43	0.6
All other causes	1419	19.3
Total	7368	100.0

New Castle

Cause of Death*	Deaths	
	#	%
Malignant neoplasms	5138	23.5
Diseases of heart	4691	21.4
Cerebrovascular diseases	1283	5.9
Chronic lower respiratory diseases	1177	5.4
Accidents (unintentional injuries)	1121	5.1
Diabetes mellitus	612	2.8
Alzheimer's disease	549	2.5
Nephritis, nephrotic syndrome & nephrosis	468	2.1
Influenza & pneumonia	441	2.0
Septicemia	344	1.6
Intentional self-harm (suicide)	342	1.6
Parkinson's disease	224	1.0
Chronic liver disease & cirrhosis	223	1.0
Assault (homicide)	222	1.0
Certain conditions originating in the perinatal period	190	0.9
Pneumonitis due to solids & liquids	161	0.7
All other causes	4687	21.4
Total	21873	100.0

City of Wilmington

Cause of Death*	Deaths	
	#	%
Malignant neoplasms	719	20.9
Diseases of heart	710	20.7
Cerebrovascular diseases	196	5.7
Accidents (unintentional injuries)	180	5.2
Chronic lower respiratory diseases	158	4.6
Diabetes mellitus	124	3.6
Assault (homicide)	109	3.2
Nephritis, nephrotic syndrome & nephrosis	83	2.4
Human immunodeficiency virus (HIV) disease	77	2.2
Alzheimer's disease	70	2.0
Septicemia	57	1.7
Certain conditions originating in the perinatal period	53	1.5
Influenza & pneumonia	50	1.5
Chronic liver disease & cirrhosis	46	1.3
Intentional self-harm (suicide)	38	1.1
Essential (primary) hypertension & hypertensive renal disease	37	1.1
All other causes	727	21.2
Total	3434	100.0

Sussex

Cause of Death*	Deaths	
	#	%
Diseases of heart	2882	25.6
Malignant neoplasms	2764	24.6
Chronic lower respiratory diseases	708	6.3
Cerebrovascular diseases	508	4.5
Accidents (unintentional injuries)	499	4.4
Alzheimer's disease	327	2.9
Diabetes mellitus	313	2.8
Nephritis, nephrotic syndrome & nephrosis	203	1.8
Influenza & pneumonia	179	1.6
Septicemia	179	1.6
Chronic liver disease & cirrhosis	162	1.4
Intentional self-harm (suicide)	138	1.2
Parkinson's disease	120	1.1
Essential (primary) hypertension & hypertensive renal disease	83	0.7
Pneumonitis due to solids & liquids	77	0.7
In situ neoplasms, benign neoplasms & neoplasms of uncertain behavior	69	0.6
All other causes	2036	18.1
Total	11247	100.0

Note:*Cause of death categories were derived using the NCHS list of 50 rankable causes of death as specified by NCHS. For specific codes, see Appendix E.

Source: Delaware Health and Social Services, Division of Public Health, Delaware Health Statistics Center

TABLE F-9. TEN LEADING CAUSES OF DEATH BY SEX AND RACE GROUP, DELAWARE, 2011-2015

All Races, Male

Cause of Death*	Deaths	
	#	%
Malignant neoplasms	5001	24.6
Diseases of heart	4896	24.1
Accidents (unintentional injuries)	1271	6.3
Chronic lower respiratory diseases	1047	5.2
Cerebrovascular diseases	894	4.4
Diabetes mellitus	596	2.9
Intentional self-harm (suicide)	457	2.2
Nephritis, nephrotic syndrome & nephrosis	413	2.0
Influenza & pneumonia	345	1.7
Alzheimer's disease	336	1.7
All other causes	5064	24.9
Total	20320	100.0

All Races, Female

Cause of Death*	Deaths	
	#	%
Malignant neoplasms	4717	23.4
Diseases of heart	4397	21.8
Chronic lower respiratory diseases	1282	6.4
Cerebrovascular diseases	1245	6.2
Accidents (unintentional injuries)	735	3.6
Alzheimer's disease	727	3.6
Diabetes mellitus	525	2.6
Nephritis, nephrotic syndrome & nephrosis	412	2.0
Influenza & pneumonia	405	2.0
Septicemia	358	1.8
All other causes	5365	26.6
Total	20168	100.0

White, Both Sexes

Cause of Death*	Deaths	
	#	%
Malignant neoplasms	7891	24.0
Diseases of heart	7663	23.3
Chronic lower respiratory diseases	2052	6.3
Cerebrovascular diseases	1715	5.2
Accidents (unintentional injuries)	1657	5.0
Alzheimer's disease	909	2.8
Diabetes mellitus	781	2.4
Influenza & pneumonia	640	2.0
Nephritis, nephrotic syndrome & nephrosis	588	1.8
Septicemia	537	1.6
All other causes	8385	25.6
Total	32818	100.0

Black, Both Sexes

Cause of Death*	Deaths	
	#	%
Malignant neoplasms	1620	23.8
Diseases of heart	1458	21.4
Cerebrovascular diseases	369	5.4
Diabetes mellitus	313	4.6
Accidents (unintentional injuries)	288	4.2
Chronic lower respiratory diseases	255	3.7
Nephritis, nephrotic syndrome & nephrosis	218	3.2
Assault (homicide)	195	2.9
Alzheimer's disease	136	2.0
Human immunodeficiency virus (HIV) disease	135	2.0
All other causes	1834	26.9
Total	6821	100.0

Hispanic, Both Sexes

Cause of Death*	Deaths	
	#	%
Malignant neoplasms	194	20.6
Diseases of heart	164	17.4
Accidents (unintentional injuries)	88	9.3
Cerebrovascular diseases	55	5.8
Certain conditions originating in the perinatal period	41	4.3
Diabetes mellitus	33	3.5
Chronic lower respiratory diseases	31	3.3
Intentional self-harm (suicide)	21	2.2
Chronic liver disease & cirrhosis	21	2.2
Assault (homicide)	19	2.0
All other causes	276	29.3
Total	943	100.0

Notes:

1. Cause of death categories were derived using the NCHS list of 50 rankable causes of death as specified by NCHS. For specific codes, see Appendix E.
2. There was a three-way tie for the tenth most common cause of Hispanic death; Alzheimer's disease also accounted for 19 deaths.

Source: Delaware Health and Social Services, Division of Public Health, Delaware Health Statistics Center

TABLE F-10. TEN LEADING CAUSES OF DEATH BY RACE-SEX GROUP, DELAWARE, 2011-2015

White Male

Cause of Death*	Deaths	
	#	%
Malignant neoplasms	4123	25.0
Diseases of heart	4075	24.8
Accidents (unintentional injuries)	1040	6.3
Chronic lower respiratory diseases	908	5.5
Cerebrovascular diseases	700	4.3
Diabetes mellitus	429	2.6
Intentional self-harm (suicide)	402	2.4
Influenza & pneumonia	297	1.8
Nephritis, nephrotic syndrome & nephrosis	293	1.8
Alzheimer's disease	293	1.8
All other causes	3901	23.7
Total	16461	100.0

White Females

Cause of Death*	Deaths	
	#	%
Malignant neoplasms	3768	23.0
Diseases of heart	3588	21.9
Chronic lower respiratory diseases	1144	7.0
Cerebrovascular diseases	1015	6.2
Accidents (unintentional injuries)	617	3.8
Alzheimer's disease	616	3.8
Diabetes mellitus	352	2.2
Influenza & pneumonia	343	2.1
Nephritis, nephrotic syndrome & nephrosis	295	1.8
Septicemia	278	1.7
All other causes	4341	26.5
Total	16357	100.0

Black Males

Cause of Death*	Deaths	
	#	%
Malignant neoplasms	771	22.7
Diseases of heart	723	21.2
Accidents (unintentional injuries)	198	5.8
Assault (homicide)	177	5.2
Cerebrovascular diseases	169	5.0
Diabetes mellitus	151	4.4
Chronic lower respiratory diseases	123	3.6
Nephritis, nephrotic syndrome & nephrosis	109	3.2
Human immunodeficiency virus (HIV) disease	89	2.6
Certain conditions originating in the perinatal period	75	2.2
All other causes	818	24.0
Total	3403	100.0

Black Females

Cause of Death*	Deaths	
	#	%
Malignant neoplasms	849	24.8
Diseases of heart	735	21.5
Cerebrovascular diseases	200	5.9
Diabetes mellitus	162	4.7
Chronic lower respiratory diseases	132	3.9
Nephritis, nephrotic syndrome & nephrosis	109	3.2
Alzheimer's disease	99	2.9
Accidents (unintentional injuries)	90	2.6
Septicemia	73	2.1
Certain conditions originating in the perinatal period	58	1.7
All other causes	911	26.7
Total	3418	100.0

Hispanic Males

Cause of Death*	Deaths	
	#	%
Malignant neoplasms	107	18.9
Diseases of heart	103	18.2
Accidents (unintentional injuries)	63	11.2
Cerebrovascular diseases	28	5.0
Certain conditions originating in the perinatal period	26	4.6
Diabetes mellitus	23	4.1
Chronic lower respiratory diseases	22	3.9
Assault (homicide)	16	2.8
Intentional self-harm (suicide)	15	2.7
Chronic liver disease & cirrhosis	15	2.7
All other causes	147	26.0
Total	565	100.0

Hispanic Females

Cause of Death*	Deaths	
	#	%
Malignant neoplasms	87	23.0
Diseases of heart	61	16.1
Cerebrovascular diseases	27	7.1
Accidents (unintentional injuries)	25	6.6
Certain conditions originating in the perinatal period	15	4.0
Alzheimer's disease	13	3.4
Diabetes mellitus	10	2.6
Chronic lower respiratory diseases	9	2.4
Nephritis, nephrotic syndrome & nephrosis	8	2.1
Septicemia	8	2.1
All other causes	115	30.4
Total	378	100.0

Note: *Cause of death categories were derived using the NCHS list of 50 rankable causes of death as specified by NCHS. For specific codes, see Appendix E.

Source: Delaware Health and Social Services, Division of Public Health, Delaware Health Statistics Center

TABLE F-11. TEN LEADING CAUSES OF DEATH BY AGE, DELAWARE, 2011-2015

1-4 Years

Cause of Death*	Deaths	
	Number	Percent
Accidents (unintentional injuries)	12	57.1
Assault (homicide)	7	33.3
Malignant neoplasms	7	33.3
Congenital malformations, deformations, & Chronic lower respiratory diseases	5	23.8
Influenza & pneumonia	2	9.5
Diseases of heart	2	9.5
Complications of medical & surgical care	1	4.8
Nephritis, nephrotic syndrome & nephrosis	1	4.8
Pneumonitis due to solids & liquids	1	4.8
Other	21	100.0
Total	52	100.0

5-14 Years

Cause of Death*	Deaths	
	Number	Percent
Accidents (unintentional injuries)	15	21.4
Malignant neoplasms	9	12.9
Intentional self-harm (suicide)	7	10.0
Congenital malformations, deformations, & Diseases of heart	7	10.0
Chronic lower respiratory diseases	5	7.1
Assault (homicide)	2	2.9
Certain conditions originating in the perinatal period	1	1.4
Pneumonitis due to solids & liquids	1	1.4
Cerebrovascular diseases	1	1.4
All other causes	21	30.0
Total	70	100.0

15-24 Years

Cause of Death*	Deaths	
	Number	Percent
Accidents (unintentional injuries)	175	40.2
Assault (homicide)	80	18.4
Intentional self-harm (suicide)	78	17.9
Diseases of heart	15	3.4
Malignant neoplasms	14	3.2
Chronic lower respiratory diseases	5	1.1
Congenital malformations, deformations, & Human immunodeficiency virus (HIV) disease	3	0.7
Septicemia	3	0.7
Complications of medical & surgical care	2	0.5
All other causes	57	13.1
Total	435	100.0

25-44 Years

Cause of Death*	Deaths	
	Number	Percent
Accidents (unintentional injuries)	609	32.3
Diseases of heart	240	12.7
Malignant neoplasms	198	10.5
Intentional self-harm (suicide)	185	9.8
Assault (homicide)	127	6.7
Diabetes mellitus	49	2.6
Chronic liver disease & cirrhosis	29	1.5
Human immunodeficiency virus (HIV) disease	27	1.4
Cerebrovascular diseases	26	1.4
Chronic lower respiratory diseases	20	1.1
All other causes	378	20.0
Total	1888	100.0

45-64 Years

Cause of Death*	Deaths	
	Number	Percent
Malignant neoplasms	2702	32.9
Diseases of heart	1605	19.5
Accidents (unintentional injuries)	601	7.3
Diabetes mellitus	309	3.8
Chronic lower respiratory diseases	300	3.7
Cerebrovascular diseases	270	3.3
Chronic liver disease & cirrhosis	251	3.1
Intentional self-harm (suicide)	236	2.9
Nephritis, nephrotic syndrome & nephrosis	152	1.9
Septicemia	146	1.8
All other causes	1638	20.0
Total	8210	100.0

65+ Years

Cause of Death*	Deaths	
	Number	Percent
Diseases of heart	7420	25.2
Malignant neoplasms	6788	23.1
Chronic lower respiratory diseases	2000	6.8
Cerebrovascular diseases	1837	6.2
Alzheimer's disease	1052	3.6
Diabetes mellitus	761	2.6
Nephritis, nephrotic syndrome & nephrosis	659	2.2
Influenza & pneumonia	647	2.2
Accidents (unintentional injuries)	585	2.0
Septicemia	504	1.7
All other causes	7147	24.3
Total	29400	100.0

Note: *Cause of death categories were derived using the NCHS list of 50 rankable causes of death as specified by NCHS. For specific codes, see Appendix E.

Source: Delaware Health and Social Services, Division of Public Health, Delaware Health Statistics Center

TABLE F-12. NUMBER OF DEATHS BY AGE FOR SELECTED LEADING CAUSES OF DEATH, DELAWARE, 2015

ALL RACES, BOTH SEXES

Cause of Death*	Age of Decedent													
	Total	< 1	1-4	5-9	10-14	15-19	20-24	25-34	35-44	45-54	55-64	65-74	75+	Unk
Diseases of the heart (I00-I09, I11, I13, I20-I51)	1931	0	0	1	0	0	1	8	35	106	221	325	1234	0
Acute rheumatic fever and chronic rheumatic heart disease (I00-I09)	7	0	0	0	0	0	0	0	0	1	1	0	5	0
Hypertensive heart disease (I11)	96	0	0	0	0	0	0	1	13	17	11	14	40	0
Hypertensive heart and renal disease (I13)	14	0	0	0	0	0	0	0	0	0	2	1	11	0
Ischemic heart disease (I20-I25)	1174	0	0	0	0	0	0	1	10	65	147	211	740	0
All other forms of heart disease (I26-I51)	640	0	0	1	0	0	1	6	12	23	60	99	438	0
Malignant neoplasms (C00-C97)	2011	0	1	0	1	0	1	7	25	143	382	574	877	0
Malignant neoplasms of lip, oral cavity and pharynx (C00-C14)	28	0	0	0	0	0	0	0	1	6	5	7	9	0
Malignant neoplasms of digestive organs (C15-C26)	486	0	0	0	0	0	0	0	4	44	112	120	206	0
Malignant neoplasms of respiratory and intrathoracic organs (C30-C39)	579	0	0	0	0	0	0	1	6	36	100	196	240	0
Malignant neoplasms of breast (C50)	147	0	0	0	0	0	0	1	3	19	35	40	49	0
Malignant neoplasms of female genital organs, (C51-C58)	135	0	0	0	0	0	0	2	3	12	26	45	47	0
Malignant neoplasms of male genital organs, (C60-C63)	78	0	0	0	0	0	0	0	0	2	9	24	43	0
Malignant neoplasms of urinary tract (C64-C68)	117	0	0	0	0	0	0	0	0	2	22	27	66	0
Malignant neoplasms of meninges, brain, and other parts of central nervous system (C70-C72)	38	0	1	0	0	0	0	1	1	2	10	14	9	0
Malignant neoplasms of lymphoid, hematopoietic, and related tissues (C81-C96)	189	0	0	0	0	0	0	2	2	11	23	52	99	0
All other and unspecified malignant neoplasms (C40-C49, C69, C73-C80,C97)	214	0	0	0	1	0	1	0	5	9	40	49	109	0
Cerebrovascular diseases (I60-I69)	469	1	0	0	0	0	0	0	0	14	36	68	350	0

TABLE F-12. (continued)

(2015 - Delaware, All Races, Both Sexes)

	Age of Decedent													
	Total	< 1	1-4	5-9	10-14	15-19	20-24	25-34	35-44	45-54	55-64	65-74	75+	Unk
Chronic lower respiratory diseases (J40-J47)	507	0	0	0	0	1	0	1	2	14	51	135	303	0
Accidents (unintentional injuries) (V01-X59, Y85-Y86)	457	4	3	0	1	8	26	80	75	85	58	34	83	0
Motor Vehicle Accidents (V02-V04, (V09.0,V09.2,V12-V14, V19.0-V19.2, V19.4-V19.6,V20-V79, V80.3-V80.5, V81.0-V81.1, V82.0-V82.1, V83-V86, V87.0-V87.8, V88.0-V88.8,V89.0.V89.2)	130	1	0	0	0	7	10	18	27	15	24	18	10	0
Nontransport Accidents (W00-X59, Y86)	319	3	3	0	1	1	15	61	46	68	34	15	72	0
Diabetes mellitus (E10-E14)	212	0	0	0	0	0	0	4	7	13	48	46	94	0
Influenza and pneumonia (J10-J18)	193	0	1	0	0	0	1	1	2	9	8	32	139	0
Alzheimer's disease (G30)	266	0	0	0	0	0	0	0	0	1	3	22	240	0
Nephritis, nephrotic syndrome, and nephrosis (N00-N07, N17-N19, N25-N27)	175	0	0	0	0	0	0	1	2	8	29	39	96	0
Septicemia (A40-A41)	146	0	0	0	0	0	0	1	3	8	20	30	84	0
Intentional self-harm (suicide) (X60-X84, Y87.0)	122	0	0	1	2	5	14	21	18	22	23	9	7	0
Chronic liver disease and cirrhosis (K70, K73-K74)	111	0	0	0	0	0	0	1	7	25	34	26	18	0
Essential hypertension and hypertensive renal disease (I10, I12)	63	0	0	0	0	0	0	1	0	3	6	5	48	0
Aortic aneurysm and dissection (I71)	37	0	0	0	0	0	0	1	2	2	4	5	23	0
Assault (homicide) (X85-Y09, Y87.1)	66	2	1	0	0	9	11	24	11	5	2	0	1	0
Human immunodeficiency virus (HIV) (B20-B24)	31	0	0	0	0	0	1	2	2	10	13	2	1	0
Certain conditions originating in the perinatal period (P00-P96)	67	67	0	0	0	0	0	0	0	0	0	0	0	0
Congenital malformations, deformations, and chromosomal abnormalities (Q00-Q99)	27	12	0	0	1	0	0	3	2	3	3	2	1	0
All other causes	1689	14	7	1	1	3	9	24	37	76	174	251	1092	0
TOTAL	8580	100	13	3	6	26	64	180	230	547	1115	1605	4691	0

Note: *ICD Codes, Tenth Revision.

Source: Delaware Health and Social Services, Division of Public Health, Delaware Health Statistics Center

TABLE F-13. NUMBER OF DEATHS BY AGE FOR SELECTED LEADING CAUSES OF DEATH BY COUNTY, DELAWARE, 2015

KENT

ALL RACES, BOTH SEXES

Cause of Death*	Age of Decedent													
	Total	< 1	1-4	5-9	10-14	15-19	20-24	25-34	35-44	45-54	55-64	65-74	75+	Unk
Diseases of the heart (I00-I09, I11, I13, I20-I51)	341	0	0	0	0	0	0	3	4	27	51	58	198	0
Acute rheumatic fever and chronic rheumatic heart disease (I00-I09)	1	0	0	0	0	0	0	0	0	0	1	0	0	0
Hypertensive heart disease (I11)	19	0	0	0	0	0	0	0	1	4	4	2	8	0
Hypertensive heart and renal disease (I13)	5	0	0	0	0	0	0	0	0	0	0	0	5	0
Ischemic heart disease (I20-I25)	221	0	0	0	0	0	0	1	2	18	33	36	131	0
All other forms of heart disease (I26-I51)	95	0	0	0	0	0	0	2	1	5	13	20	54	0
Malignant neoplasms (C00-C97)	393	0	0	0	0	0	0	2	4	29	82	120	156	0
Malignant neoplasms of lip, oral cavity and pharynx (C00-C14)	6	0	0	0	0	0	0	0	0	4	0	2	0	0
Malignant neoplasms of digestive organs (C15-C26)	85	0	0	0	0	0	0	0	0	9	21	16	39	0
Malignant neoplasms of respiratory and intrathoracic organs (C30-C39)	110	0	0	0	0	0	0	0	1	5	18	50	36	0
Malignant neoplasms of breast (C50)	38	0	0	0	0	0	0	1	0	4	12	9	12	0
Malignant neoplasms of female genital organs, (C51-C58)	27	0	0	0	0	0	0	0	0	0	4	16	7	0
Malignant neoplasms of male genital organs, (C60-C63)	18	0	0	0	0	0	0	0	0	1	2	5	10	0
Malignant neoplasms of urinary tract (C64-C68)	19	0	0	0	0	0	0	0	0	0	5	3	11	0
Malignant neoplasms of meninges, brain, and other parts of central nervous system (C70-C72)	6	0	0	0	0	0	0	0	0	0	3	3	0	0
Malignant neoplasms of lymphoid, hematopoietic, and related tissues (C81-C96)	37	0	0	0	0	0	0	1	1	3	6	7	19	0
All other and unspecified malignant neoplasms (C40-C49, C69, C73-C80, C97)	47	0	0	0	0	0	0	0	2	3	11	9	22	0
Cerebrovascular diseases (I60-I69)	79	1	0	0	0	0	0	0	0	1	6	18	53	0

TABLE F-13. (continued)

(2015 - Kent, All Races, Both Sexes)

	Age of Decedent													
	Total	< 1	1-4	5-9	10-14	15-19	20-24	25-34	35-44	45-54	55-64	65-74	75+	Unk
Chronic lower respiratory diseases (J40-J47)	102	0	0	0	0	0	0	0	0	3	12	31	56	0
Accidents (unintentional injuries) (V01-X59, Y85-Y86)	92	2	1	0	1	1	5	23	14	18	10	6	11	0
Motor Vehicle Accidents (V02-V04, (V09.0,V09.2,V12-V14, V19.0-V19.2, V19.4-V19.6,V20-V79, V80.3-V80.5, V81.0-V81.1, V82.0-V82.1, V83-V86, V87.0-V87.8, V88.0-V88.8,V89.0,V89.2)	31	0	0	0	0	1	1	6	3	6	8	3	3	0
Nontransport Accidents (W00-X59, Y86)	58	2	1	0	1	0	3	17	10	11	2	3	8	0
Diabetes mellitus (E10-E14)	42	0	0	0	0	0	0	2	1	1	8	14	16	0
Influenza and pneumonia (J10-J18)	24	0	1	0	0	0	0	0	0	0	3	6	14	0
Alzheimer's disease (G30)	52	0	0	0	0	0	0	0	0	0	0	2	50	0
Nephritis, nephrotic syndrome, and nephrosis (N00-N07, N17-N19, N25-N27)	39	0	0	0	0	0	0	0	0	0	10	7	22	0
Septicemia (A40-A41)	27	0	0	0	0	0	0	0	0	3	4	6	14	0
Intentional self-harm (suicide) (X60-X84, Y87.0)	21	0	0	0	1	2	2	3	2	4	6	0	1	0
Chronic liver disease and cirrhosis (K70, K73-K74)	25	0	0	0	0	0	0	0	1	3	10	8	3	0
Essential hypertension and hypertensive renal disease (I10, I12)	10	0	0	0	0	0	0	0	0	0	1	0	9	0
Aortic aneurysm and dissection (I71)	6	0	0	0	0	0	0	0	1	0	1	1	3	0
Assault (homicide) (X85-Y09, Y87.1)	11	0	0	0	0	3	0	2	2	2	1	0	1	0
Human immunodeficiency virus (HIV) (B20-B24)	8	0	0	0	0	0	0	2	0	2	4	0	0	0
Certain conditions originating in the perinatal period (P00-P96)	13	13	0	0	0	0	0	0	0	0	0	0	0	0
Congenital malformations, deformations, and chromosomal abnormalities (Q00-Q99)	9	4	0	0	1	0	0	1	0	2	1	0	0	0
All other causes	298	3	2	0	1	0	3	6	7	15	34	50	177	0
TOTAL	1592	23	4	0	4	6	10	44	36	110	244	327	784	0

Note: *ICD Codes, Tenth Revision.

Source: Delaware Health and Social Services, Division of Public Health, Delaware Health Statistics Center

TABLE F-14. NUMBER OF DEATHS BY AGE FOR SELECTED LEADING CAUSES OF DEATH BY COUNTY, DELAWARE, 2015

**NEW CASTLE
ALL RACES, BOTH SEXES**

Cause of Death*	Age of Decedent													
	Total	< 1	1-4	5-9	10-14	15-19	20-24	25-34	35-44	45-54	55-64	65-74	75+	Unk
Diseases of the heart (I00-I09, I11, I13, I20-I51)	959	0	0	0	0	0	1	4	24	64	101	160	605	0
Acute rheumatic fever and chronic rheumatic heart disease (I00-I09)	3	0	0	0	0	0	0	0	0	1	0	0	2	0
Hypertensive heart disease (I11)	58	0	0	0	0	0	0	1	9	11	5	11	21	0
Hypertensive heart and renal disease (I13)	3	0	0	0	0	0	0	0	0	0	1	0	2	0
Ischemic heart disease (I20-I25)	576	0	0	0	0	0	0	0	7	38	70	101	360	0
All other forms of heart disease (I26-I51)	319	0	0	0	0	0	1	3	8	14	25	48	220	0
Malignant neoplasms (C00-C97)	1026	0	1	0	0	0	1	5	13	81	203	265	457	0
Malignant neoplasms of lip, oral cavity and pharynx (C00-C14)	15	0	0	0	0	0	0	0	1	1	3	4	6	0
Malignant neoplasms of digestive organs (C15-C26)	270	0	0	0	0	0	0	0	3	28	63	58	118	0
Malignant neoplasms of respiratory and intrathoracic organs (C30-C39)	277	0	0	0	0	0	0	1	4	21	50	82	119	0
Malignant neoplasms of breast (C50)	75	0	0	0	0	0	0	0	0	11	16	23	25	0
Malignant neoplasms of female genital organs, (C51-C58)	74	0	0	0	0	0	0	2	2	7	14	18	31	0
Malignant neoplasms of male genital organs, (C60-C63)	37	0	0	0	0	0	0	0	0	1	4	9	23	0
Malignant neoplasms of urinary tract (C64-C68)	57	0	0	0	0	0	0	0	0	0	12	12	33	0
Malignant neoplasms of meninges, brain, and other parts of central nervous system (C70-C72)	24	0	1	0	0	0	0	1	1	1	6	8	6	0
Malignant neoplasms of lymphoid, hematopoietic, and related tissues (C81-C96)	101	0	0	0	0	0	0	1	0	7	11	29	53	0
All other and unspecified malignant neoplasms (C40-C49, C69, C73-C80, C97)	96	0	0	0	0	0	1	0	2	4	24	22	43	0
Cerebrovascular diseases (I60-I69)	268	0	0	0	0	0	0	0	0	11	20	33	204	0

TABLE F-14 (continued)

(2015 - New Castle, All Races, Both Sexes)

	Age of Decedent													Unk
	Total	< 1	1-4	5-9	10-14	15-19	20-24	25-34	35-44	45-54	55-64	65-74	75+	
Chronic lower respiratory diseases (J40-J47)	242	0	0	0	0	1	0	1	1	9	24	58	148	0
Accidents (unintentional injuries) (V01-X59, Y85-Y86)	256	0	2	0	0	5	12	40	47	44	31	20	55	0
Motor Vehicle Accidents (V02-V04, (V09.0,V09.2,V12-V14, V19.0-V19.2, V19.4-V19.6,V20-V79, V80.3-V80.5, V81.0-V81.1, V82.0-V82.1, V83-V86, V87.0-V87.8, V88.0-V88.8,V89.0,V89.2)	58	0	0	0	0	4	4	8	16	5	6	11	4	0
Nontransport Accidents (W00-X59, Y86)	193	0	2	0	0	1	8	31	30	38	25	8	50	0
Diabetes mellitus (E10-E14)	107	0	0	0	0	0	0	1	5	9	33	22	37	0
Influenza and pneumonia (J10-J18)	126	0	0	0	0	0	1	1	2	8	4	19	91	0
Alzheimer's disease (G30)	142	0	0	0	0	0	0	0	0	1	2	13	126	0
Nephritis, nephrotic syndrome, and nephrosis (N00-N07, N17-N19, N25-N27)	97	0	0	0	0	0	0	1	0	5	17	19	55	0
Septicemia (A40-A41)	72	0	0	0	0	0	0	0	3	3	11	14	41	0
Intentional self-harm (suicide) (X60-X84, Y87.0)	73	0	0	0	1	3	12	15	10	12	12	5	3	0
Chronic liver disease and cirrhosis (K70, K73-K74)	49	0	0	0	0	0	0	0	2	16	13	12	6	0
Essential hypertension and hypertensive renal disease (I10, I12)	28	0	0	0	0	0	0	1	0	1	3	3	20	0
Aortic aneurysm and dissection (I71)	22	0	0	0	0	0	0	1	1	2	3	2	13	0
Assault (homicide) (X85-Y09, Y87.1)	50	0	0	0	0	6	10	22	8	3	1	0	0	0
Human immunodeficiency virus (HIV) (B20-B24)	18	0	0	0	0	0	1	0	2	7	7	1	0	0
Certain conditions originating in the perinatal period (P00-P96)	43	43	0	0	0	0	0	0	0	0	0	0	0	0
Congenital malformations, deformations, and chromosomal abnormalities (Q00-Q99)	11	3	0	0	0	0	0	1	2	1	2	1	1	0
All other causes	958	8	3	1	0	3	6	13	20	45	98	133	628	0
TOTAL	4547	54	6	1	1	18	44	106	140	322	585	780	2490	0

Note: *ICD Codes, Tenth Revision.

Source: Delaware Health and Social Services, Division of Public Health, Delaware Health Statistics Center

TABLE F-15. NUMBER OF DEATHS BY AGE FOR SELECTED LEADING CAUSES OF DEATH, DELAWARE, 2015

**CITY OF WILMINGTON
ALL RACES, BOTH SEXES**

Cause of Death*	Age of Decedent													Unk
	Total	< 1	1-4	5-9	10-14	15-19	20-24	25-34	35-44	45-54	55-64	65-74	75+	
Diseases of the heart (I00-I09, I11, I13, I20-I51)	135	0	0	0	0	0	0	0	2	14	20	26	73	0
Acute rheumatic fever and chronic rheumatic heart disease (I00-I09)	1	0	0	0	0	0	0	0	0	0	0	0	1	0
Hypertensive heart disease (I11)	7	0	0	0	0	0	0	0	1	4	0	1	1	0
Hypertensive heart and renal disease (I13)	0	0	0	0	0	0	0	0	0	0	0	0	0	0
Ischemic heart disease (I20-I25)	83	0	0	0	0	0	0	0	0	6	13	16	48	0
All other forms of heart disease (I26-I51)	44	0	0	0	0	0	0	0	1	4	7	9	23	0
Malignant neoplasms (C00-C97)	127	0	0	0	0	0	0	1	1	8	28	34	55	0
Malignant neoplasms of lip, oral cavity and pharynx (C00-C14)	2	0	0	0	0	0	0	0	0	0	1	0	1	0
Malignant neoplasms of digestive organs (C15-C26)	29	0	0	0	0	0	0	0	1	1	7	8	12	0
Malignant neoplasms of respiratory and intrathoracic organs (C30-C39)	37	0	0	0	0	0	0	1	0	3	7	13	13	0
Malignant neoplasms of breast (C50)	9	0	0	0	0	0	0	0	0	2	4	1	2	0
Malignant neoplasms of female genital organs, (C51-C58)	9	0	0	0	0	0	0	0	0	1	3	2	3	0
Malignant neoplasms of male genital organs, (C60-C63)	6	0	0	0	0	0	0	0	0	0	0	2	4	0
Malignant neoplasms of urinary tract (C64-C68)	8	0	0	0	0	0	0	0	0	0	2	0	6	0
Malignant neoplasms of meninges, brain, and other parts of central nervous system (C70-C72)	1	0	0	0	0	0	0	0	0	0	1	0	0	0
Malignant neoplasms of lymphoid, hematopoietic, and related tissues (C81-C96)	16	0	0	0	0	0	0	0	0	0	2	6	8	0
All other and unspecified malignant neoplasms (C40-C49, C69, C73-C80,C97)	10	0	0	0	0	0	0	0	0	1	1	2	6	0
Cerebrovascular diseases (I60-I69)	39	0	0	0	0	0	0	0	0	2	5	5	27	0

TABLE F-15 (continued)

(2015 - City of Wilmington, All Races, Both Sexes)

	Age of Decedent													
	Total	< 1	1-4	5-9	10-14	15-19	20-24	25-34	35-44	45-54	55-64	65-74	75+	Unk
Chronic lower respiratory diseases (J40-J47)	24	0	0	0	0	0	0	0	0	0	3	7	14	0
Accidents (unintentional injuries) (V01-X59, Y85-Y86)	37	0	0	0	0	0	0	8	5	9	4	4	7	0
Motor Vehicle Accidents (V02-V04, (V09.0,V09.2,V12-V14, V19.0-V19.2, V19.4-V19.6,V20-V79, V80.3-V80.5, V81.0-V81.1, V82.0-V82.1, V83-V86, V87.0-V87.8, V88.0-V88.8,V89.0,V89.2)	7	0	0	0	0	0	0	2	3	0	1	1	0	0
Nontransport Accidents (W00-X59, Y86)	28	0	0	0	0	0	0	6	2	8	3	2	7	0
Diabetes mellitus (E10-E14)	14	0	0	0	0	0	0	0	2	0	4	4	4	0
Influenza and pneumonia (J10-J18)	13	0	0	0	0	0	1	0	0	0	1	2	9	0
Alzheimer's disease (G30)	16	0	0	0	0	0	0	0	0	0	1	0	15	0
Nephritis, nephrotic syndrome, and nephrosis (N00-N07, N17-N19, N25-N27)	16	0	0	0	0	0	0	0	0	1	7	0	8	0
Septicemia (A40-A41)	12	0	0	0	0	0	0	0	1	2	1	4	4	0
Intentional self-harm (suicide) (X60-X84, Y87.0)	8	0	0	0	1	0	1	0	0	3	2	0	1	0
Chronic liver disease and cirrhosis (K70, K73-K74)	11	0	0	0	0	0	0	0	1	4	3	3	0	0
Essential hypertension and hypertensive renal disease (I10, I12)	6	0	0	0	0	0	0	1	0	0	0	0	5	0
Aortic aneurysm and dissection (I71)	6	0	0	0	0	0	0	0	0	1	1	0	4	0
Assault (homicide) (X85-Y09, Y87.1)	27	0	0	0	0	6	6	11	3	1	0	0	0	0
Human immunodeficiency virus (HIV) (B20-B24)	8	0	0	0	0	0	0	0	1	3	4	0	0	0
Certain conditions originating in the perinatal period (P00-P96)	9	9	0	0	0	0	0	0	0	0	0	0	0	0
Congenital malformations, deformations, and chromosomal abnormalities (Q00-Q99)	3	1	0	0	0	0	0	0	1	0	0	0	1	0
All other causes	155	0	1	0	0	2	4	3	4	6	19	17	99	0
TOTAL	666	10	1	0	1	8	12	24	21	54	103	106	326	0

Note: *ICD Codes, Tenth Revision.

Source: Delaware Health and Social Services, Division of Public Health, Delaware Health Statistics Center

TABLE F-16. NUMBER OF DEATHS BY AGE FOR SELECTED LEADING CAUSES OF DEATH BY COUNTY, DELAWARE, 2015

SUSSEX

ALL RACES, BOTH SEXES

Cause of Death*	Age of Decedent													
	Total	< 1	1-4	5-9	10-14	15-19	20-24	25-34	35-44	45-54	55-64	65-74	75+	Unk
Diseases of the heart (I00-I09, I11, I13, I20-I51)	631	0	0	1	0	0	0	1	7	15	69	107	431	0
Acute rheumatic fever and chronic rheumatic heart disease (I00-I09)	3	0	0	0	0	0	0	0	0	0	0	0	3	0
Hypertensive heart disease (I11)	19	0	0	0	0	0	0	0	3	2	2	1	11	0
Hypertensive heart and renal disease (I13)	6	0	0	0	0	0	0	0	0	0	1	1	4	0
Ischemic heart disease (I20-I25)	377	0	0	0	0	0	0	0	1	9	44	74	249	0
All other forms of heart disease (I26-I51)	226	0	0	1	0	0	0	1	3	4	22	31	164	0
Malignant neoplasms (C00-C97)	592	0	0	0	1	0	0	0	8	33	97	189	264	0
Malignant neoplasms of lip, oral cavity and pharynx (C00-C14)	7	0	0	0	0	0	0	0	0	1	2	1	3	0
Malignant neoplasms of digestive organs (C15-C26)	131	0	0	0	0	0	0	0	1	7	28	46	49	0
Malignant neoplasms of respiratory and intrathoracic organs (C30-C39)	192	0	0	0	0	0	0	0	1	10	32	64	85	0
Malignant neoplasms of breast (C50)	34	0	0	0	0	0	0	0	3	4	7	8	12	0
Malignant neoplasms of female genital organs, (C51-C58)	34	0	0	0	0	0	0	0	1	5	8	11	9	0
Malignant neoplasms of male genital organs, (C60-C63)	23	0	0	0	0	0	0	0	0	0	3	10	10	0
Malignant neoplasms of urinary tract (C64-C68)	41	0	0	0	0	0	0	0	0	2	5	12	22	0
Malignant neoplasms of meninges, brain, and other parts of central nervous system (C70-C72)	8	0	0	0	0	0	0	0	0	1	1	3	3	0
Malignant neoplasms of lymphoid, hematopoietic, and related tissues (C81-C96)	51	0	0	0	0	0	0	0	1	1	6	16	27	0
All other and unspecified malignant neoplasms (C40-C49, C69, C73-C80, C97)	71	0	0	0	1	0	0	0	1	2	5	18	44	0
Cerebrovascular diseases (I60-I69)	122	0	0	0	0	0	0	0	0	2	10	17	93	0

TABLE F-16.(continued)

(2015 - Sussex, All Races, Both Sexes)

	Age of Decedent												Unk	
	Total	< 1	1-4	5-9	10-14	15-19	20-24	25-34	35-44	45-54	55-64	65-74		75+
Chronic lower respiratory diseases (J40-J47)	163	0	0	0	0	0	0	0	1	2	15	46	99	0
Accidents (unintentional injuries) (V01-X59, Y85-Y86)	109	2	0	0	0	2	9	17	14	23	17	8	17	0
Motor Vehicle Accidents (V02-V04, (V09.0,V09.2,V12-V14, V19.0-V19.2, V19.4-V19.6,V20-V79, V80.3-V80.5, V81.0-V81.1, V82.0-V82.1, V83-V86, V87.0-V87.8, V88.0-V88.8,V89.0,V89.2)	41	1	0	0	0	2	5	4	8	4	10	4	3	0
Nontransport Accidents (W00-X59, Y86)	68	1	0	0	0	0	4	13	6	19	7	4	14	0
Diabetes mellitus (E10-E14)	63	0	0	0	0	0	0	1	1	3	7	10	41	0
Influenza and pneumonia (J10-J18)	43	0	0	0	0	0	0	0	0	1	1	7	34	0
Alzheimer's disease (G30)	72	0	0	0	0	0	0	0	0	0	1	7	64	0
Nephritis, nephrotic syndrome, and nephrosis (N00-N07, N17-N19, N25-N27)	39	0	0	0	0	0	0	0	2	3	2	13	19	0
Septicemia (A40-A41)	47	0	0	0	0	0	0	1	0	2	5	10	29	0
Intentional self-harm (suicide) (X60-X84, Y87.0)	28	0	0	1	0	0	0	3	6	6	5	4	3	0
Chronic liver disease and cirrhosis (K70, K73-K74)	37	0	0	0	0	0	0	1	4	6	11	6	9	0
Essential hypertension and hypertensive renal disease (I10, I12)	25	0	0	0	0	0	0	0	0	2	2	2	19	0
Aortic aneurysm and dissection (I71)	9	0	0	0	0	0	0	0	0	0	0	2	7	0
Assault (homicide) (X85-Y09, Y87.1)	5	2	1	0	0	0	1	0	1	0	0	0	0	0
Human immunodeficiency virus (HIV) (B20-B24)	5	0	0	0	0	0	0	0	0	1	2	1	1	0
Certain conditions originating in the perinatal period (P00-P96)	11	11	0	0	0	0	0	0	0	0	0	0	0	0
Congenital malformations, deformations, and chromosomal abnormalities (Q00-Q99)	7	5	0	0	0	0	0	1	0	0	0	1	0	0
All other causes	433	3	2	0	0	0	0	5	10	16	42	68	287	0
TOTAL	2441	23	3	2	1	2	10	30	54	115	286	498	1417	0

Note:*ICD Codes, Tenth Revision.

Source: Delaware Health and Social Services, Division of Public Health, Delaware Health Statistics Center

**TABLE F-17. NUMBER OF DEATHS BY AGE FOR SELECTED LEADING CAUSES OF DEATH, DELAWARE, 2015
ALL RACES, MALES**

Cause of Death*	Age of Decedent													
	Total	< 1	1-4	5-9	10-14	15-19	20-24	25-34	35-44	45-54	55-64	65-74	75+	Unk
Diseases of the heart (I00-I09, I11, I13, I20-I51)	1039	0	0	0	0	0	1	6	21	70	150	215	576	0
Acute rheumatic fever and chronic rheumatic heart disease (I00-I09)	3	0	0	0	0	0	0	0	0	0	0	0	3	0
Hypertensive heart disease (I11)	51	0	0	0	0	0	0	1	8	11	10	5	16	0
Hypertensive heart and renal disease (I13)	7	0	0	0	0	0	0	0	0	0	1	1	5	0
Ischemic heart disease (I20-I25)	681	0	0	0	0	0	0	1	7	47	108	156	362	0
All other forms of heart disease (I26-I51)	297	0	0	0	0	0	1	4	6	12	31	53	190	0
Malignant neoplasms (C00-C97)	1034	0	0	0	0	0	1	1	5	67	200	310	450	0
Malignant neoplasms of lip, oral cavity and pharynx (C00-C14)	14	0	0	0	0	0	0	0	0	2	4	5	3	0
Malignant neoplasms of digestive organs (C15-C26)	273	0	0	0	0	0	0	0	0	25	70	75	103	0
Malignant neoplasms of respiratory and intrathoracic organs (C30-C39)	323	0	0	0	0	0	0	0	2	21	57	103	140	0
Malignant neoplasms of breast (C50)	4	0	0	0	0	0	0	0	0	0	1	2	1	0
Malignant neoplasms of male genital organs, (C60-C63)	78	0	0	0	0	0	0	0	0	2	9	24	43	0
Malignant neoplasms of urinary tract (C64-C68)	85	0	0	0	0	0	0	0	0	2	14	21	48	0
Malignant neoplasms of meninges, brain, and other parts of central nervous system (C70-C72)	24	0	0	0	0	0	0	1	1	1	5	10	6	0
Malignant neoplasms of lymphoid, hematopoietic, and related tissues (C81-C96)	109	0	0	0	0	0	0	0	1	8	16	34	50	0
All other and unspecified malignant neoplasms (C40-C49, C69, C73-C80,C97)	124	0	0	0	0	0	1	0	1	6	24	36	56	0
Cerebrovascular diseases (I60-I69)	196	1	0	0	0	0	0	0	0	6	22	36	131	0

TABLE F-17 (continued)

(2015 - All Races, Male)

	Age of Decedent												Unk	
	Total	< 1	1-4	5-9	10-14	15-19	20-24	25-34	35-44	45-54	55-64	65-74		75+
Chronic lower respiratory diseases (J40-J47)	255	0	0	0	0	1	0	1	0	7	27	75	144	0
Accidents (unintentional injuries) (V01-X59, Y85-Y86)	297	2	1	0	0	7	18	59	48	57	40	23	42	0
Motor Vehicle Accidents (V02-V04, V09.0,V09.2,V12-V14, V19.0-V19.2, V19.4-V19.6,V20-V79, V80.3-V80.5, V81.0-V81.1, V82.0-V82.1, V83-V86, V87.0-V87.8, V88.0-V88.8,V89.0,V89.2)	97	0	0	0	0	6	7	15	22	11	17	12	7	0
Nontransport Accidents (W00-X59, Y86)	194	2	1	0	0	1	11	43	25	44	23	10	34	0
Diabetes mellitus (E10-E14)	116	0	0	0	0	0	0	2	3	6	32	24	49	0
Influenza and pneumonia (J10-J18)	102	0	0	0	0	0	1	0	1	7	5	18	70	0
Alzheimer's disease (G30)	94	0	0	0	0	0	0	0	0	0	1	13	80	0
Nephritis, nephrotic syndrome, and nephrosis (N00-N07, N17-N19, N25-N27)	94	0	0	0	0	0	0	0	0	7	20	20	47	0
Septicemia (A40-A41)	65	0	0	0	0	0	0	1	1	2	8	13	40	0
Intentional self-harm (suicide) (X60-X84, Y87.0)	87	0	0	1	1	5	11	14	13	12	19	6	5	0
Chronic liver disease and cirrhosis (K70, K73-K74)	75	0	0	0	0	0	0	1	5	18	23	18	10	0
Essential hypertension and hypertensive renal disease (I10, I12)	27	0	0	0	0	0	0	0	0	3	5	2	17	0
Aortic aneurysm and dissection (I71)	22	0	0	0	0	0	0	1	2	2	4	3	10	0
Assault (homicide) (X85-Y09, Y87.1)	57	2	0	0	0	9	10	21	10	5	0	0	0	0
Human immunodeficiency virus (HIV) (B20-B24)	19	0	0	0	0	0	1	0	1	4	11	1	1	0
Certain conditions originating in the perinatal period (P00-P96)	35	35	0	0	0	0	0	0	0	0	0	0	0	0
Congenital malformations, deformations, and chromosomal abnormalities (Q00-Q99)	12	6	0	0	0	0	0	2	1	1	1	1	0	0
All other causes	745	8	5	1	1	3	6	10	21	49	114	132	395	0
TOTAL	4371	54	6	2	2	25	49	119	132	323	682	910	2067	0

Note: *ICD Codes, Tenth Revision.

Source: Delaware Health and Social Services, Division of Public Health, Delaware Health Statistics Center

TABLE F-18. NUMBER OF DEATHS BY AGE FOR SELECTED LEADING CAUSES OF DEATH, DELAWARE, 2015
ALL RACES, FEMALES

Cause of Death*	Age of Decedent													
	Total	< 1	1-4	5-9	10-14	15-19	20-24	25-34	35-44	45-54	55-64	65-74	75+	Unk
Diseases of the heart (I00-I09, I11, I13, I20-I51)	892	0	0	1	0	0	0	2	14	36	71	110	658	0
Acute rheumatic fever and chronic rheumatic heart disease (I00-I09)	4	0	0	0	0	0	0	0	0	1	1	0	2	0
Hypertensive heart disease (I11)	45	0	0	0	0	0	0	0	5	6	1	9	24	0
Hypertensive heart and renal disease (I13)	7	0	0	0	0	0	0	0	0	0	1	0	6	0
Ischemic heart disease (I20-I25)	493	0	0	0	0	0	0	0	3	18	39	55	378	0
All other forms of heart disease (I26-I51)	343	0	0	1	0	0	0	2	6	11	29	46	248	0
Malignant neoplasms (C00-C97)	977	0	1	0	1	0	0	6	20	76	182	264	427	0
Malignant neoplasms of lip, oral cavity and pharynx (C00-C14)	14	0	0	0	0	0	0	0	1	4	1	2	6	0
Malignant neoplasms of digestive organs (C15-C26)	213	0	0	0	0	0	0	0	4	19	42	45	103	0
Malignant neoplasms of respiratory and intrathoracic organs (C30-C39)	256	0	0	0	0	0	0	1	4	15	43	93	100	0
Malignant neoplasms of breast (C50)	143	0	0	0	0	0	0	1	3	19	34	38	48	0
Malignant neoplasms of female genital organs, (C51-C58)	135	0	0	0	0	0	0	2	3	12	26	45	47	0
Malignant neoplasms of urinary tract (C64-C68)	32	0	0	0	0	0	0	0	0	0	8	6	18	0
Malignant neoplasms of meninges, brain, and other parts of central nervous system (C70-C72)	14	0	1	0	0	0	0	0	0	1	5	4	3	0
Malignant neoplasms of lymphoid, hematopoietic, and related tissues (C81-C96)	80	0	0	0	0	0	0	2	1	3	7	18	49	0
All other and unspecified malignant neoplasms (C40-C49, C69, C73-C80, C97)	90	0	0	0	1	0	0	0	4	3	16	13	53	0
Cerebrovascular diseases (I60-I69)	273	0	0	0	0	0	0	0	0	8	14	32	219	0

TABLE F-18 (continued)

(2015 - All Races, Female)

	Age of Decedent													
	Total	< 1	1-4	5-9	10-14	15-19	20-24	25-34	35-44	45-54	55-64	65-74	75+	Unk
Chronic lower respiratory diseases (J40-J47)	252	0	0	0	0	0	0	0	2	7	24	60	159	0
Accidents (unintentional injuries) (V01-X59, Y85-Y86)	160	2	2	0	1	1	8	21	27	28	18	11	41	0
Motor Vehicle Accidents (V02-V04, V09.0, V09.2, V12-V14, V19.0-V19.2, V19.4-V19.6, V20-V79, V80.3-V80.5, V81.0-V81.1, V82.0-V82.1, V83-V86, V87.0-V87.8, V88.0-V88.8, V89.0, V89.2)	33	1	0	0	0	1	3	3	5	4	7	6	3	0
Nontransport Accidents (W00-X59, Y86)	125	1	2	0	1	0	4	18	21	24	11	5	38	0
Diabetes mellitus (E10-E14)	96	0	0	0	0	0	0	2	4	7	16	22	45	0
Influenza and pneumonia (J10-J18)	91	0	1	0	0	0	0	1	1	2	3	14	69	0
Alzheimer's disease (G30)	172	0	0	0	0	0	0	0	0	1	2	9	160	0
Nephritis, nephrotic syndrome, and nephrosis (N00-N07, N17-N19, N25-N27)	81	0	0	0	0	0	0	1	2	1	9	19	49	0
Septicemia (A40-A41)	81	0	0	0	0	0	0	0	2	6	12	17	44	0
Intentional self-harm (suicide) (X60-X84, Y87.0)	35	0	0	0	1	0	3	7	5	10	4	3	2	0
Chronic liver disease and cirrhosis (K70, K73-K74)	36	0	0	0	0	0	0	0	2	7	11	8	8	0
Essential hypertension and hypertensive renal disease (I10, I12)	36	0	0	0	0	0	0	1	0	0	1	3	31	0
Aortic aneurysm and dissection (I71)	15	0	0	0	0	0	0	0	0	0	0	2	13	0
Assault (homicide) (X85-Y09, Y87.1)	9	0	1	0	0	0	1	3	1	0	2	0	1	0
Human immunodeficiency virus (HIV) (B20-B24)	12	0	0	0	0	0	0	2	1	6	2	1	0	0
Certain conditions originating in the perinatal period (P00-P96)	32	32	0	0	0	0	0	0	0	0	0	0	0	0
Congenital malformations, deformations, and chromosomal abnormalities (Q00-Q99)	15	6	0	0	1	0	0	1	1	2	2	1	1	0
All Other Causes	944	6	2	0	0	0	3	14	16	27	60	119	697	0
TOTAL	4209	46	7	1	4	1	15	61	98	224	433	695	2624	0

Note: *ICD Codes, Tenth Revision.

Source: Delaware Health and Social Services, Division of Public Health, Delaware Health Statistics Center

TABLE F-19. NUMBER OF DEATHS BY AGE FOR SELECTED LEADING CAUSES OF DEATH, DELAWARE, 2015

WHITE, BOTH SEXES

Cause of Death*	Age of Decedent													
	Total	< 1	1-4	5-9	10-14	15-19	20-24	25-34	35-44	45-54	55-64	65-74	75+	Unk
Diseases of the heart (I00-I09, I11, I13, I20-I51)	1577	0	0	0	0	0	0	5	24	72	158	254	1064	0
Acute rheumatic fever and chronic rheumatic heart disease (I00-I09)	6	0	0	0	0	0	0	0	0	1	1	0	4	0
Hypertensive heart disease (I11)	65	0	0	0	0	0	0	0	8	10	8	8	31	0
Hypertensive heart and renal disease (I13)	14	0	0	0	0	0	0	0	0	0	2	1	11	0
Ischemic heart disease (I20-I25)	970	0	0	0	0	0	0	1	7	48	108	170	636	0
All other forms of heart disease (I26-I51)	522	0	0	0	0	0	0	4	9	13	39	75	382	0
Malignant neoplasms (C00-C97)	1631	0	0	0	1	0	0	5	15	98	295	465	752	0
Malignant neoplasms of lip, oral cavity and pharynx (C00-C14)	24	0	0	0	0	0	0	0	0	5	4	6	9	0
Malignant neoplasms of digestive organs (C15-C26)	390	0	0	0	0	0	0	0	3	33	84	93	177	0
Malignant neoplasms of respiratory and intrathoracic organs (C30-C39)	478	0	0	0	0	0	0	0	2	25	80	167	204	0
Malignant neoplasms of breast (C50)	110	0	0	0	0	0	0	0	2	9	26	33	40	0
Malignant neoplasms of female genital organs, (C51-C58)	94	0	0	0	0	0	0	2	3	5	19	30	35	0
Malignant neoplasms of male genital organs, (C60-C63)	57	0	0	0	0	0	0	0	0	2	6	17	32	0
Malignant neoplasms of urinary tract (C64-C68)	100	0	0	0	0	0	0	0	0	2	19	23	56	0
Malignant neoplasms of meninges, brain, and other parts of central nervous system (C70-C72)	34	0	0	0	0	0	0	1	1	2	8	14	8	0
Malignant neoplasms of lymphoid, hematopoietic, and related tissues (C81-C96)	151	0	0	0	0	0	0	2	1	9	16	37	86	0
All other and unspecified malignant neoplasms (C40-C49, C69, C73-C80, C97)	193	0	0	0	1	0	0	0	3	6	33	45	105	0
Cerebrovascular diseases (I60-I69)	373	0	0	0	0	0	0	0	0	5	25	51	292	0

TABLE F-19 (continued)

(2015 - White, Both Sexes)

	Age of Decedent													Unk
	Total	< 1	1-4	5-9	10-14	15-19	20-24	25-34	35-44	45-54	55-64	65-74	75+	
Chronic lower respiratory diseases (J40-J47)	447	0	0	0	0	1	0	1	1	12	45	112	275	0
Accidents (unintentional injuries) (V01-X59, Y85-Y86)	362	2	2	0	1	6	18	64	58	67	47	24	73	0
Motor Vehicle Accidents (V02-V04, (V09.0,V09.2,V12-V14, V19.0-V19.2, V19.4-V19.6,V20-V79, V80.3-V80.5, V81.0-V81.1, V82.0-V82.1, V83-V86, V87.0-V87.8, V88.0-V88.8,V89.0,V89.2)	85	1	0	0	0	5	5	11	17	6	20	10	10	0
Nontransport Accidents (W00-X59, Y86)	271	1	2	0	1	1	12	52	40	60	27	13	62	0
Diabetes mellitus (E10-E14)	154	0	0	0	0	0	0	3	3	5	32	32	79	0
Influenza and pneumonia (J10-J18)	169	0	1	0	0	0	0	1	1	8	6	27	125	0
Alzheimer's disease (G30)	223	0	0	0	0	0	0	0	0	1	2	18	202	0
Nephritis, nephrotic syndrome, and nephrosis (N00-N07, N17-N19, N25-N27)	115	0	0	0	0	0	0	1	1	4	13	26	70	0
Septicemia (A40-A41)	112	0	0	0	0	0	0	1	1	5	17	19	69	0
Intentional self-harm (suicide) (X60-X84, Y87.0)	96	0	0	1	1	3	10	17	17	13	22	6	6	0
Chronic liver disease and cirrhosis (K70, K73-K74)	96	0	0	0	0	0	0	1	7	19	28	23	18	0
Essential hypertension and hypertensive renal disease (I10, I12)	53	0	0	0	0	0	0	0	0	3	4	5	41	0
Aortic aneurysm and dissection (I71)	34	0	0	0	0	0	0	1	1	1	4	5	22	0
Assault (homicide) (X85-Y09, Y87.1)	13	1	0	0	0	0	0	3	3	4	1	0	1	0
Human immunodeficiency virus (HIV) (B20-B24)	9	0	0	0	0	0	0	0	0	2	5	1	1	0
Certain conditions originating in the perinatal period (P00-P96)	28	28	0	0	0	0	0	0	0	0	0	0	0	0
Congenital malformations, deformations, and chromosomal abnormalities (Q00-Q99)	17	5	0	0	1	0	0	3	2	1	3	1	1	0
All other causes	1374	8	4	0	0	2	3	15	26	57	128	198	933	0
TOTAL	6883	44	7	1	4	12	31	121	160	377	835	1267	4024	0

Note:*ICD Codes, Tenth Revision.

Source: Delaware Health and Social Services, Division of Public Health, Delaware Health Statistics Center

TABLE F-20. NUMBER OF DEATHS BY AGE FOR SELECTED LEADING CAUSES OF DEATH, DELAWARE, 2015

WHITE MALES

Cause of Death*	Age of Decedent													
	Total	< 1	1-4	5-9	10-14	15-19	20-24	25-34	35-44	45-54	55-64	65-74	75+	Unk
Diseases of the heart (I00-I09, I11, I13, I20-I51)	852	0	0	0	0	0	0	4	16	49	110	175	498	0
Acute rheumatic fever and chronic rheumatic heart disease (I00-I09)	3	0	0	0	0	0	0	0	0	0	0	0	3	0
Hypertensive heart disease (I11)	33	0	0	0	0	0	0	0	5	7	7	3	11	0
Hypertensive heart and renal disease (I13)	7	0	0	0	0	0	0	0	0	0	1	1	5	0
Ischemic heart disease (I20-I25)	573	0	0	0	0	0	0	1	6	37	81	129	319	0
All other forms of heart disease (I26-I51)	236	0	0	0	0	0	0	3	5	5	21	42	160	0
Malignant neoplasms (C00-C97)	867	0	0	0	0	0	0	1	4	57	156	254	395	0
Malignant neoplasms of lip, oral cavity and pharynx (C00-C14)	13	0	0	0	0	0	0	0	0	2	4	4	3	0
Malignant neoplasms of digestive organs (C15-C26)	224	0	0	0	0	0	0	0	0	21	55	56	92	0
Malignant neoplasms of respiratory and intrathoracic organs (C30-C39)	271	0	0	0	0	0	0	0	1	18	44	90	118	0
Malignant neoplasms of breast (C50)	3	0	0	0	0	0	0	0	0	0	1	1	1	0
Malignant neoplasms of male genital organs, (C60-C63)	57	0	0	0	0	0	0	0	0	2	6	17	32	0
Malignant neoplasms of urinary tract (C64-C68)	74	0	0	0	0	0	0	0	0	2	12	18	42	0
Malignant neoplasms of meninges, brain, and other parts of central nervous system (C70-C72)	23	0	0	0	0	0	0	1	1	1	4	10	6	0
Malignant neoplasms of lymphoid, hematopoietic, and related tissues (C81-C96)	90	0	0	0	0	0	0	0	1	7	12	24	46	0
All other and unspecified malignant neoplasms (C40-C49, C69, C73-C80, C97)	112	0	0	0	0	0	0	0	1	4	18	34	55	0
Cerebrovascular diseases (I60-I69)	157	0	0	0	0	0	0	0	0	3	16	25	113	0

TABLE F-20 (continued)

(2015 - White Males)

	Age of Decedent													Unk
	Total	< 1	1-4	5-9	10-14	15-19	20-24	25-34	35-44	45-54	55-64	65-74	75+	
Chronic lower respiratory diseases (J40-J47)	222	0	0	0	0	1	0	1	0	7	23	61	129	0
Accidents (unintentional injuries) (V01-X59, Y85-Y86)	232	1	1	0	0	5	13	47	36	42	32	17	38	0
Motor Vehicle Accidents (V02-V04, (V09.0,V09.2,V12-V14, V19.0-V19.2, V19.4-V19.6,V20-V79, V80.3-V80.5, V81.0-V81.1, V82.0-V82.1, V83-V86, V87.0-V87.8, V88.0-V88.8,V89.0,V89.2)	61	0	0	0	0	4	4	10	12	3	14	7	7	0
Nontransport Accidents (W00-X59, Y86)	167	1	1	0	0	1	9	36	24	38	18	9	30	0
Diabetes mellitus (E10-E14)	85	0	0	0	0	0	0	2	2	2	20	19	40	0
Influenza and pneumonia (J10-J18)	88	0	0	0	0	0	0	0	0	6	4	16	62	0
Alzheimer's disease (G30)	81	0	0	0	0	0	0	0	0	0	0	11	70	0
Nephritis, nephrotic syndrome, and nephrosis (N00-N07, N17-N19, N25-N27)	62	0	0	0	0	0	0	0	0	3	8	14	37	0
Septicemia (A40-A41)	50	0	0	0	0	0	0	1	0	1	8	10	30	0
Intentional self-harm (suicide) (X60-X84, Y87.0)	72	0	0	1	0	3	9	11	13	9	18	4	4	0
Chronic liver disease and cirrhosis (K70, K73-K74)	66	0	0	0	0	0	0	1	5	15	18	17	10	0
Essential hypertension and hypertensive renal disease (I10, I12)	24	0	0	0	0	0	0	0	0	3	3	2	16	0
Aortic aneurysm and dissection (I71)	20	0	0	0	0	0	0	1	1	1	4	3	10	0
Assault (homicide) (X85-Y09, Y87.1)	8	1	0	0	0	0	0	1	2	4	0	0	0	0
Human immunodeficiency virus (HIV) (B20-B24)	6	0	0	0	0	0	0	0	0	0	4	1	1	0
Certain conditions originating in the perinatal period (P00-P96)	12	12	0	0	0	0	0	0	0	0	0	0	0	0
Congenital malformations, deformations, and chromosomal abnormalities (Q00-Q99)	8	2	0	0	0	0	0	2	1	1	1	1	0	0
All other causes	611	3	3	0	0	2	3	7	15	41	91	108	338	0
TOTAL	3523	19	4	1	0	11	25	79	95	244	516	738	1791	0

Note:*ICD Codes, Tenth Revision.

Source: Delaware Health and Social Services, Division of Public Health, Delaware Health Statistics Center

TABLE F-21. NUMBER OF DEATHS BY AGE FOR SELECTED LEADING CAUSES OF DEATH, DELAWARE, 2015

WHITE FEMALES

Cause of Death*	Age of Decedent													
	Total	< 1	1-4	5-9	10-14	15-19	20-24	25-34	35-44	45-54	55-64	65-74	75+	Unk
Diseases of the heart (I00-I09, I11, I13, I20-I51)	725	0	0	0	0	0	0	1	8	23	48	79	566	0
Acute rheumatic fever and chronic rheumatic heart disease (I00-I09)	3	0	0	0	0	0	0	0	0	1	1	0	1	0
Hypertensive heart disease (I11)	32	0	0	0	0	0	0	0	3	3	1	5	20	0
Hypertensive heart and renal disease (I13)	7	0	0	0	0	0	0	0	0	0	1	0	6	0
Ischemic heart disease (I20-I25)	397	0	0	0	0	0	0	0	1	11	27	41	317	0
All other forms of heart disease (I26-I51)	286	0	0	0	0	0	0	1	4	8	18	33	222	0
Malignant neoplasms (C00-C97)	764	0	0	0	1	0	0	4	11	41	139	211	357	0
Malignant neoplasms of lip, oral cavity and pharynx (C00-C14)	11	0	0	0	0	0	0	0	0	3	0	2	6	0
Malignant neoplasms of digestive organs (C15-C26)	166	0	0	0	0	0	0	0	3	12	29	37	85	0
Malignant neoplasms of respiratory and intrathoracic organs (C30-C39)	207	0	0	0	0	0	0	0	1	7	36	77	86	0
Malignant neoplasms of breast (C50)	107	0	0	0	0	0	0	0	2	9	25	32	39	0
Malignant neoplasms of female genital organs, (C51-C58)	94	0	0	0	0	0	0	2	3	5	19	30	35	0
Malignant neoplasms of urinary tract (C64-C68)	26	0	0	0	0	0	0	0	0	0	7	5	14	0
Malignant neoplasms of meninges, brain, and other parts of central nervous system (C70-C72)	11	0	0	0	0	0	0	0	0	1	4	4	2	0
Malignant neoplasms of lymphoid, hematopoietic, and related tissues (C81-C96)	61	0	0	0	0	0	0	2	0	2	4	13	40	0
All other and unspecified malignant neoplasms (C40-C49, C69, C73-C80, C97)	81	0	0	0	1	0	0	0	2	2	15	11	50	0
Cerebrovascular diseases (I60-I69)	216	0	0	0	0	0	0	0	0	2	9	26	179	0

TABLE F-21 (continued)

(2015 - White Females)

	Age of Decedent												Unk	
	Total	< 1	1-4	5-9	10-14	15-19	20-24	25-34	35-44	45-54	55-64	65-74		75+
Chronic lower respiratory diseases (J40-J47)	225	0	0	0	0	0	0	0	1	5	22	51	146	0
Accidents (unintentional injuries) (V01-X59, Y85-Y86)	130	1	1	0	1	1	5	17	22	25	15	7	35	0
Motor Vehicle Accidents (V02-V04, (V09.0,V09.2,V12-V14, V19.0-V19.2, V19.4-V19.6,V20-V79, V80.3-V80.5, V81.0-V81.1, V82.0-V82.1, V83-V86, V87.0-V87.8, V88.0-V88.8,V89.0,V89.2)	24	1	0	0	0	1	1	1	5	3	6	3	3	0
Nontransport Accidents (W00-X59, Y86)	104	0	1	0	1	0	3	16	16	22	9	4	32	0
Diabetes mellitus (E10-E14)	69	0	0	0	0	0	0	1	1	3	12	13	39	0
Influenza and pneumonia (J10-J18)	81	0	1	0	0	0	0	1	1	2	2	11	63	0
Alzheimer's disease (G30)	142	0	0	0	0	0	0	0	0	1	2	7	132	0
Nephritis, nephrotic syndrome, and nephrosis (N00-N07, N17-N19, N25-N27)	53	0	0	0	0	0	0	1	1	1	5	12	33	0
Septicemia (A40-A41)	62	0	0	0	0	0	0	0	1	4	9	9	39	0
Intentional self-harm (suicide) (X60-X84, Y87.0)	24	0	0	0	1	0	1	6	4	4	4	2	2	0
Chronic liver disease and cirrhosis (K70, K73-K74)	30	0	0	0	0	0	0	0	2	4	10	6	8	0
Essential hypertension and hypertensive renal disease (I10, I12)	29	0	0	0	0	0	0	0	0	0	1	3	25	0
Aortic aneurysm and dissection (I71)	14	0	0	0	0	0	0	0	0	0	0	2	12	0
Assault (homicide) (X85-Y09, Y87.1)	5	0	0	0	0	0	0	2	1	0	1	0	1	0
Human immunodeficiency virus (HIV) (B20-B24)	3	0	0	0	0	0	0	0	0	2	1	0	0	0
Certain conditions originating in the perinatal period (P00-P96)	16	16	0	0	0	0	0	0	0	0	0	0	0	0
Congenital malformations, deformations, and chromosomal abnormalities (Q00-Q99)	9	3	0	0	1	0	0	1	1	0	2	0	1	0
All other causes	763	5	1	0	0	0	0	8	11	16	37	90	595	0
TOTAL	3360	25	3	0	4	1	6	42	65	133	319	529	2233	0

Note: *ICD Codes, Tenth Revision.

Source: Delaware Health and Social Services, Division of Public Health, Delaware Health Statistics Center

TABLE F-22. NUMBER OF DEATHS BY AGE FOR SELECTED LEADING CAUSES OF DEATH, DELAWARE, 2015
BLACK, BOTH SEXES

Cause of Death*	Age of Decedent													Unk
	Total	< 1	1-4	5-9	10-14	15-19	20-24	25-34	35-44	45-54	55-64	65-74	75+	
Diseases of the heart (I00-I09, I11, I13, I20-I51)	303	0	0	1	0	0	1	3	9	30	57	60	142	0
Acute rheumatic fever and chronic rheumatic heart disease (I00-I09)	1	0	0	0	0	0	0	0	0	0	0	0	1	0
Hypertensive heart disease (I11)	29	0	0	0	0	0	0	1	4	7	3	5	9	0
Hypertensive heart and renal disease (I13)	0	0	0	0	0	0	0	0	0	0	0	0	0	0
Ischemic heart disease (I20-I25)	172	0	0	0	0	0	0	0	2	14	35	35	86	0
All other forms of heart disease (I26-I51)	101	0	0	1	0	0	1	2	3	9	19	20	46	0
Malignant neoplasms (C00-C97)	320	0	1	0	0	0	0	2	7	32	77	95	106	0
Malignant neoplasms of lip, oral cavity and pharynx (C00-C14)	1	0	0	0	0	0	0	0	0	1	0	0	0	0
Malignant neoplasms of digestive organs (C15-C26)	81	0	0	0	0	0	0	0	1	6	26	23	25	0
Malignant neoplasms of respiratory and intrathoracic organs (C30-C39)	90	0	0	0	0	0	0	1	4	9	18	27	31	0
Malignant neoplasms of breast (C50)	31	0	0	0	0	0	0	1	0	9	8	7	6	0
Malignant neoplasms of female genital organs, (C51-C58)	36	0	0	0	0	0	0	0	0	5	7	13	11	0
Malignant neoplasms of male genital organs, (C60-C63)	18	0	0	0	0	0	0	0	0	0	1	6	11	0
Malignant neoplasms of urinary tract (C64-C68)	17	0	0	0	0	0	0	0	0	0	3	4	10	0
Malignant neoplasms of meninges, brain, and other parts of central nervous system (C70-C72)	4	0	1	0	0	0	0	0	0	0	2	0	1	0
Malignant neoplasms of lymphoid, hematopoietic, and related tissues (C81-C96)	28	0	0	0	0	0	0	0	1	1	6	12	8	0
All other and unspecified malignant neoplasms (C40-C49, C69, C73-C80, C97)	14	0	0	0	0	0	0	0	1	1	6	3	3	0
Cerebrovascular diseases (I60-I69)	82	0	0	0	0	0	0	0	0	8	9	13	52	0

TABLE F-22 (continued)

(2015 - Black, Both Sexes)

	Age of Decedent													
	Total	< 1	1-4	5-9	10-14	15-19	20-24	25-34	35-44	45-54	55-64	65-74	75+	Unk
Chronic lower respiratory diseases (J40-J47)	55	0	0	0	0	0	0	0	1	2	6	21	25	0
Accidents (unintentional injuries) (V01-X59, Y85-Y86)	72	2	1	0	0	2	7	12	13	13	11	4	7	0
Motor Vehicle Accidents (V02-V04, (V09.0,V09.2,V12-V14, V19.0-V19.2, V19.4-V19.6,V20-V79, V80.3-V80.5, V81.0-V81.1, V82.0-V82.1, V83-V86, V87.0-V87.8, V88.0-V88.8,V89.0,V89.2)	34	0	0	0	0	2	5	3	9	7	4	4	0	0
Nontransport Accidents (W00-X59, Y86)	37	2	1	0	0	0	2	9	4	5	7	0	7	0
Diabetes mellitus (E10-E14)	52	0	0	0	0	0	0	1	3	8	13	13	14	0
Influenza and pneumonia (J10-J18)	19	0	0	0	0	0	1	0	0	0	2	4	12	0
Alzheimer's disease (G30)	36	0	0	0	0	0	0	0	0	0	1	4	31	0
Nephritis, nephrotic syndrome, and nephrosis (N00-N07, N17-N19, N25-N27)	51	0	0	0	0	0	0	0	1	4	14	11	21	0
Septicemia (A40-A41)	32	0	0	0	0	0	0	0	2	3	3	10	14	0
Intentional self-harm (suicide) (X60-X84, Y87.0)	21	0	0	0	1	1	3	4	1	6	1	3	1	0
Chronic liver disease and cirrhosis (K70, K73-K74)	14	0	0	0	0	0	0	0	0	5	6	3	0	0
Essential hypertension and hypertensive renal disease (I10, I12)	10	0	0	0	0	0	0	1	0	0	2	0	7	0
Aortic aneurysm and dissection (I71)	3	0	0	0	0	0	0	0	1	1	0	0	1	0
Assault (homicide) (X85-Y09, Y87.1)	51	1	1	0	0	9	11	19	8	1	1	0	0	0
Human immunodeficiency virus (HIV) (B20-B24)	21	0	0	0	0	0	0	2	2	8	8	1	0	0
Certain conditions originating in the perinatal period (P00-P96)	31	31	0	0	0	0	0	0	0	0	0	0	0	0
Congenital malformations, deformations, and chromosomal abnormalities (Q00-Q99)	7	4	0	0	0	0	0	0	0	2	0	1	0	0
All other causes	263	1	2	0	0	1	4	7	9	17	40	47	135	0
TOTAL	1443	39	5	1	1	13	27	51	57	140	251	290	568	0

Note: *ICD Codes, Tenth Revision.

Source: Delaware Health and Social Services, Division of Public Health, Delaware Health Statistics Center

TABLE F-23. NUMBER OF DEATHS BY AGE FOR SELECTED LEADING CAUSES OF DEATH, DELAWARE, 2015

BLACK MALES

Cause of Death*	Age of Decedent													
	Total	<1	1-4	5-9	10-14	15-19	20-24	25-34	35-44	45-54	55-64	65-74	75+	Unk
Diseases of the heart (I00-I09, I11, I13, I20-I51)	154	0	0	0	0	0	1	2	3	18	35	34	61	0
Acute rheumatic fever and chronic rheumatic heart disease (I00-I09)	0	0	0	0	0	0	0	0	0	0	0	0	0	0
Hypertensive heart disease (I11)	16	0	0	0	0	0	0	1	2	4	3	1	5	0
Hypertensive heart and renal disease (I13)	0	0	0	0	0	0	0	0	0	0	0	0	0	0
Ischemic heart disease (I20-I25)	88	0	0	0	0	0	0	0	0	8	23	25	32	0
All other forms of heart disease (I26-I51)	50	0	0	0	0	0	1	1	1	6	9	8	24	0
Malignant neoplasms (C00-C97)	136	0	0	0	0	0	0	0	1	3	37	48	47	0
Malignant neoplasms of lip, oral cavity and pharynx (C00-C14)	0	0	0	0	0	0	0	0	0	0	0	0	0	0
Malignant neoplasms of digestive organs (C15-C26)	39	0	0	0	0	0	0	0	0	1	13	16	9	0
Malignant neoplasms of respiratory and intrathoracic organs (C30-C39)	46	0	0	0	0	0	0	0	1	2	12	12	19	0
Malignant neoplasms of breast (C50)	1	0	0	0	0	0	0	0	0	0	0	1	0	0
Malignant neoplasms of male genital organs, (C60-C63)	18	0	0	0	0	0	0	0	0	0	1	6	11	0
Malignant neoplasms of urinary tract (C64-C68)	11	0	0	0	0	0	0	0	0	0	2	3	6	0
Malignant neoplasms of meninges, brain, and other parts of central nervous system (C70-C72)	1	0	0	0	0	0	0	0	0	0	1	0	0	0
Malignant neoplasms of lymphoid, hematopoietic, and related tissues (C81-C96)	12	0	0	0	0	0	0	0	0	0	3	8	1	0
All other and unspecified malignant neoplasms (C40-C49, C69, C73-C80,C97)	8	0	0	0	0	0	0	0	0	0	5	2	1	0
Cerebrovascular diseases (I60-I69)	33	0	0	0	0	0	0	0	0	3	5	9	16	0

TABLE F-23 (continued)

(2015 - Black Males)

	Age of Decedent													
	Total	< 1	1-4	5-9	10-14	15-19	20-24	25-34	35-44	45-54	55-64	65-74	75+	Unk
Chronic lower respiratory diseases (J40-J47)	29	0	0	0	0	0	0	0	0	0	4	12	13	0
Accidents (unintentional injuries) (V01-X59, Y85-Y86)	52	1	0	0	0	2	5	10	10	10	8	4	2	0
Motor Vehicle Accidents (V02-V04, (V09.0,V09.2,V12-V14, V19.0-V19.2, V19.4-V19.6,V20-V79, V80.3-V80.5, V81.0-V81.1, V82.0-V82.1, V83-V86, V87.0-V87.8, V88.0-V88.8,V89.0,V89.2)	30	0	0	0	0	2	3	3	9	6	3	4	0	0
Nontransport Accidents (W00-X59, Y86)	21	1	0	0	0	0	2	7	1	3	5	0	2	0
Diabetes mellitus (E10-E14)	26	0	0	0	0	0	0	0	1	4	9	4	8	0
Influenza and pneumonia (J10-J18)	10	0	0	0	0	0	1	0	0	0	1	2	6	0
Alzheimer's disease (G30)	11	0	0	0	0	0	0	0	0	0	1	2	8	0
Nephritis, nephrotic syndrome, and nephrosis (N00-N07, N17-N19, N25-N27)	28	0	0	0	0	0	0	0	0	4	11	4	9	0
Septicemia (A40-A41)	14	0	0	0	0	0	0	0	1	1	0	3	9	0
Intentional self-harm (suicide) (X60-X84, Y87.0)	13	0	0	0	1	1	2	3	0	2	1	2	1	0
Chronic liver disease and cirrhosis (K70, K73-K74)	8	0	0	0	0	0	0	0	0	2	5	1	0	0
Essential hypertension and hypertensive renal disease (I10, I12)	3	0	0	0	0	0	0	0	0	0	2	0	1	0
Aortic aneurysm and dissection (I71)	2	0	0	0	0	0	0	0	1	1	0	0	0	0
Assault (homicide) (X85-Y09, Y87.1)	47	1	0	0	0	9	10	18	8	1	0	0	0	0
Human immunodeficiency virus (HIV) (B20-B24)	12	0	0	0	0	0	0	0	1	4	7	0	0	0
Certain conditions originating in the perinatal period (P00-P96)	18	18	0	0	0	0	0	0	0	0	0	0	0	0
Congenital malformations, deformations, and chromosomal abnormalities (Q00-Q99)	2	2	0	0	0	0	0	0	0	0	0	0	0	0
All other causes	107	1	1	0	0	1	2	3	5	7	18	21	48	0
TOTAL	705	23	1	0	1	13	21	36	31	60	144	146	229	0

Note: *ICD Codes, Tenth Revision.

Source: Delaware Health and Social Services, Division of Public Health, Delaware Health Statistics Center

**TABLE F-24. NUMBER OF DEATHS BY AGE FOR SELECTED LEADING CAUSES OF DEATH, DELAWARE, 2015
(BLACK FEMALES)**

Cause of Death*	Age of Decedent													
	Total	< 1	1-4	5-9	10-14	15-19	20-24	25-34	35-44	45-54	55-64	65-74	75+	Unk
Diseases of the heart (I00-I09, I11, I13, I20-I51)	149	0	0	1	0	0	0	1	6	12	22	26	81	0
Acute rheumatic fever and chronic rheumatic heart disease (I00-I09)	1	0	0	0	0	0	0	0	0	0	0	0	1	0
Hypertensive heart disease (I11)	13	0	0	0	0	0	0	0	2	3	0	4	4	0
Hypertensive heart and renal disease (I13)	0	0	0	0	0	0	0	0	0	0	0	0	0	0
Ischemic heart disease (I20-I25)	84	0	0	0	0	0	0	0	2	6	12	10	54	0
All other forms of heart disease (I26-I51)	51	0	0	1	0	0	0	1	2	3	10	12	22	0
Malignant neoplasms (C00-C97)	184	0	1	0	0	0	0	2	6	29	40	47	59	0
Malignant neoplasms of lip, oral cavity and pharynx (C00-C14)	1	0	0	0	0	0	0	0	0	1	0	0	0	0
Malignant neoplasms of digestive organs (C15-C26)	42	0	0	0	0	0	0	0	1	5	13	7	16	0
Malignant neoplasms of respiratory and intrathoracic organs (C30-C39)	44	0	0	0	0	0	0	1	3	7	6	15	12	0
Malignant neoplasms of breast (C50)	30	0	0	0	0	0	0	1	0	9	8	6	6	0
Malignant neoplasms of female genital organs, (C51-C58)	36	0	0	0	0	0	0	0	5	7	13	11	11	0
Malignant neoplasms of urinary tract (C64-C68)	6	0	0	0	0	0	0	0	0	0	1	1	4	0
Malignant neoplasms of meninges, brain, and other parts of central nervous system (C70-C72)	3	0	1	0	0	0	0	0	0	0	1	0	1	0
Malignant neoplasms of lymphoid, hematopoietic, and related tissues (C81-C96)	16	0	0	0	0	0	0	0	1	1	3	4	7	0
All other and unspecified malignant neoplasms (C40-C49, C69, C73-C80,C97)	6	0	0	0	0	0	0	0	1	1	1	1	2	0
Cerebrovascular diseases (I60-I69)	49	0	0	0	0	0	0	0	0	5	4	4	36	0

TABLE F-24 (continued)

(2015 - Black Females)

	Age of Decedent													
	Total	< 1	1-4	5-9	10-14	15-19	20-24	25-34	35-44	45-54	55-64	65-74	75+	Unk
Chronic lower respiratory diseases (J40-J47)	26	0	0	0	0	0	0	0	1	2	2	9	12	0
Accidents (unintentional injuries) (V01-X59, Y85-Y86)	20	1	1	0	0	0	2	2	3	3	3	0	5	0
Motor Vehicle Accidents (V02-V04, (V09.0,V09.2,V12-V14, V19.0-V19.2, V19.4-V19.6,V20-V79, V80.3-V80.5, V81.0-V81.1, V82.0-V82.1, V83-V86, V87.0-V87.8, V88.0-V88.8,V89.0,V89.2)	4	0	0	0	0	0	2	0	0	1	1	0	0	0
Nontransport Accidents (W00-X59, Y86)	16	1	1	0	0	0	0	2	3	2	2	0	5	0
Diabetes mellitus (E10-E14)	26	0	0	0	0	0	0	1	2	4	4	9	6	0
Influenza and pneumonia (J10-J18)	9	0	0	0	0	0	0	0	0	0	1	2	6	0
Alzheimer's disease (G30)	25	0	0	0	0	0	0	0	0	0	0	2	23	0
Nephritis, nephrotic syndrome, and nephrosis (N00-N07, N17-N19, N25-N27)	23	0	0	0	0	0	0	0	1	0	3	7	12	0
Septicemia (A40-A41)	18	0	0	0	0	0	0	0	1	2	3	7	5	0
Intentional self-harm (suicide) (X60-X84, Y87.0)	8	0	0	0	0	0	1	1	1	4	0	1	0	0
Chronic liver disease and cirrhosis (K70, K73-K74)	6	0	0	0	0	0	0	0	0	3	1	2	0	0
Essential hypertension and hypertensive renal disease (I10, I12)	7	0	0	0	0	0	0	1	0	0	0	0	6	0
Aortic aneurysm and dissection (I71)	1	0	0	0	0	0	0	0	0	0	0	0	1	0
Assault (homicide) (X85-Y09, Y87.1)	4	0	1	0	0	0	1	1	0	0	1	0	0	0
Human immunodeficiency virus (HIV) (B20-B24)	9	0	0	0	0	0	0	2	1	4	1	1	0	0
Certain conditions originating in the perinatal period (P00-P96)	13	13	0	0	0	0	0	0	0	0	0	0	0	0
Congenital malformations, deformations, and chromosomal abnormalities (Q00-Q99)	5	2	0	0	0	0	0	0	0	2	0	1	0	0
All other causes	156	0	1	0	0	0	2	4	4	10	22	26	87	0
TOTAL	738	16	4	1	0	0	6	15	26	80	107	144	339	0

Note: *ICD Codes, Tenth Revision.

Source: Delaware Health and Social Services, Division of Public Health, Delaware Health Statistics Center

TABLE F-25. HIV INFECTION/AIDS¹ DEATHS BY COUNTY, RACE, HISPANIC² ORIGIN AND SEX, BY COUNTIES AND DELAWARE, 2001-2015

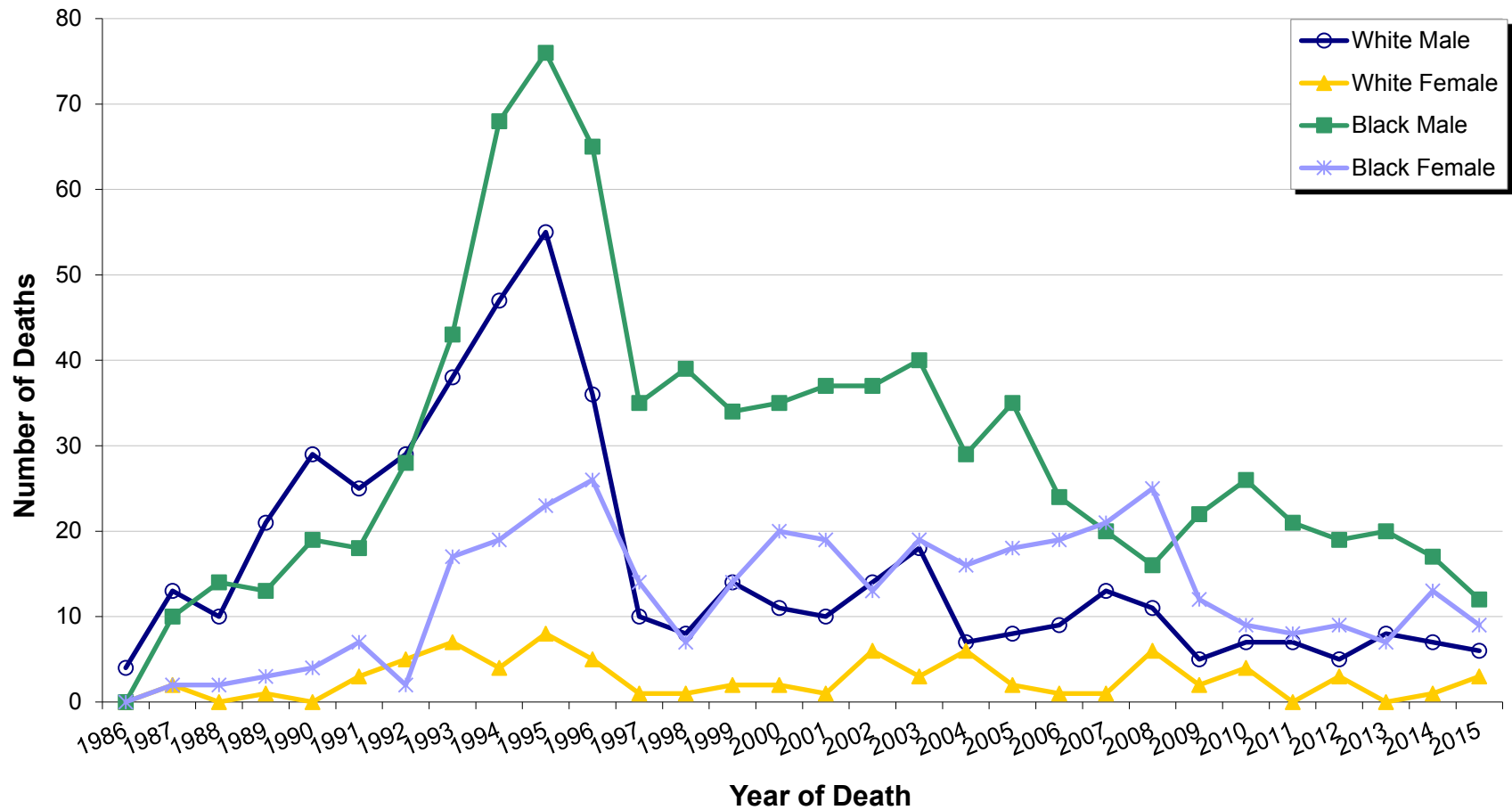
Area/ Race	2001	2002	2003	2004	2005	2006	2007	2008	2009	2010	2011	2012	2013	2014	2015
Delaware	67	70	80	58	63	53	55	58	41	46	36	36	36	38	31
Males	47	51	58	36	43	33	33	27	27	33	28	24	28	24	19
White	10	14	18	7	8	9	13	11	5	7	7	5	8	7	6
Black	37	37	40	29	35	24	20	16	22	26	21	19	20	17	12
Females	20	19	22	22	20	20	22	31	14	13	8	12	8	14	12
White	1	6	3	6	2	1	1	6	2	4	0	3	0	1	3
Black	19	13	19	16	18	19	21	25	12	9	8	9	7	13	9
Kent	9	4	8	8	5	11	9	8	5	10	5	8	4	4	8
Males	5	4	7	5	2	7	5	2	5	6	5	6	4	2	6
White	2	0	2	2	0	1	2	1	2	2	2	2	1	0	1
Black	3	4	5	3	2	6	3	1	3	4	3	4	3	2	5
Females	4	0	1	3	3	4	4	6	0	4	0	2	0	2	2
White	0	0	1	0	0	0	0	1	0	0	0	0	0	0	0
Black	4	0	0	3	3	4	4	5	0	4	0	2	0	2	2
New Castle	52	56	69	46	51	34	39	42	34	31	25	27	27	27	18
Males	38	40	49	29	35	19	21	17	21	23	18	17	19	18	10
White	6	9	15	4	6	5	6	4	2	2	4	3	4	6	2
Black	32	31	34	25	29	14	15	13	19	21	14	14	15	12	7
Females	14	16	20	17	16	15	18	25	13	8	7	10	8	9	8
White	1	4	2	5	2	1	1	5	1	4	0	3	0	1	2
Black	13	12	18	12	14	14	17	20	12	4	7	7	7	8	6
Wilmington	37	28	43	25	33	19	22	29	27	19	15	15	18	21	8
Males	28	22	30	15	21	7	10	13	16	16	9	9	13	16	4
White	3	4	5	0	2	0	0	1	1	0	0	2	1	4	0
Black	25	18	25	15	19	7	10	12	15	16	9	7	12	12	4
Females	9	6	13	10	12	12	12	16	11	3	6	6	5	5	4
White	1	0	0	1	1	1	1	3	1	1	0	0	0	0	1
Black	8	6	13	9	11	11	11	13	10	2	6	6	4	5	3
Bal of NCCo	15	28	26	21	18	15	17	13	7	12	10	12	9	6	10
Males	10	18	19	14	14	12	11	4	5	7	9	8	6	2	6
White	3	5	10	4	4	5	6	3	1	2	4	1	3	2	2
Black	7	13	9	10	10	7	5	1	4	5	5	7	3	0	3
Females	5	10	7	7	4	3	6	9	2	5	1	4	3	4	4
White	0	4	2	4	1	0	0	2	0	3	0	3	0	1	1
Black	5	6	5	3	3	3	6	7	2	2	1	1	3	3	3
Sussex	6	10	3	4	7	8	7	8	2	5	6	1	5	7	5
Males	4	7	2	2	6	7	7	8	1	4	5	1	5	4	3
White	2	5	1	1	2	3	5	6	1	3	1	0	3	1	3
Black	2	2	1	1	4	4	2	2	0	1	4	1	2	3	0
Females	2	3	1	2	1	1	0	0	1	1	1	0	0	3	2
White	0	2	0	1	0	0	0	0	1	0	0	0	0	0	1
Black	2	1	1	1	1	1	0	0	0	1	1	0	0	3	1
Hispanic	3	4	2	1	2	1	1	1	1	1	2	0	1	4	1
Males	2	4	1	0	2	0	1	1	1	1	2	0	0	4	1
Females	1	0	1	1	0	1	1	0	0	0	0	0	1	0	0

Notes:

1. See Table F-12 for ICD-9 and ICD-10 Codes.
2. People of Hispanic origin may be of any race. See Hispanic Origin in the Technical Notes.

Sources: Delaware Health and Social Services, Division of Public Health, Delaware Health Statistics Center
National Center for Health Statistics

Figure F-3. Number of HIV Deaths by Race and Sex, Delaware, 1986-2015



Source: Delaware Health and Social Services, Division of Public Health, Delaware Health Statistics Center

TABLE F-26. NUMBER AND PERCENT OF DEATHS BY METHOD OF DISPOSITION, RACE, COUNTY, CITY OF WILMINGTON, AND DELAWARE, 2015

Area/ Method of Disposition	Race							
	All Races		White		Black		Other	
	Number	Percent	Number	Percent	Number	Percent	Number	Percent
Delaware	8580	100.0	6883	100.0	1443	100.0	254	100.0
Burial	4117	48.0	3075	44.7	935	64.8	107	42.1
Cremation	4054	47.2	3459	50.3	471	32.6	124	48.8
Donation	99	1.2	94	1.4	2	0.1	3	1.2
Entombment	145	1.7	137	2.0	6	0.4	2	0.8
Removal from State	164	1.9	117	1.7	29	2.0	18	7.1
Unknown	1	0.0	1	0.0	0	0.0	0	0.0
Kent	1592	100.0	1232	100.0	304	100.0	56	100.0
Burial	792	49.7	581	47.2	185	60.9	26	46.4
Cremation	732	46.0	597	48.5	108	35.5	27	48.2
Donation	14	0.9	13	1.1	1	0.3	0	0.0
Entombment	14	0.9	12	1.0	2	0.7	0	0.0
Removal from State	40	2.5	29	2.4	8	2.6	3	5.4
Unknown	0	0.0	0	0.0	0	0.0	0	0.0
New Castle	4547	100.0	3476	100.0	909	100.0	162	100.0
Burial	2228	49.0	1597	45.9	571	62.8	60	37.0
Cremation	2069	45.5	1669	48.0	314	34.5	86	53.1
Donation	50	1.1	48	1.4	1	0.1	1	0.6
Entombment	110	2.4	104	3.0	4	0.4	2	1.2
Removal from State	89	2.0	57	1.6	19	2.1	13	8.0
Unknown	1	0.0	1	0.0	0	0.0	0	0.0
Wilmington	666	100.0	277	100.0	359	100.0	30	100.0
Burial	373	56.0	141	50.9	217	60.4	15	50.0
Cremation	270	40.5	120	43.3	137	38.2	13	43.3
Donation	2	0.3	2	0.7	0	0.0	0	0.0
Entombment	12	1.8	11	4.0	1	0.3	0	0.0
Removal from State	8	1.2	2	0.7	4	1.1	2	6.7
Unknown/Other	1	0.2	1	0.4	0	0.0	0	0.0
Balance of NC County	3881	100.0	3199	100.0	550	100.0	132	100.0
Burial	1855	47.8	1456	45.5	354	64.4	45	34.1
Cremation	1799	46.4	1549	48.4	177	32.2	73	55.3
Donation	48	1.2	46	1.4	1	0.2	1	0.8
Entombment	98	2.5	93	2.9	3	0.5	2	1.5
Removal from State	81	2.1	55	1.7	15	2.7	11	8.3
Unknown	0	0.0	0	0.0	0	0.0	0	0.0
Sussex	2441	100.0	2175	100.0	230	100.0	36	100.0
Burial	1097	44.9	897	41.2	179	77.8	21	58.3
Cremation	1253	51.3	1193	54.9	49	21.3	11	30.6
Donation	35	1.4	33	1.5	0	0.0	2	5.6
Entombment	21	0.9	21	1.0	0	0.0	0	0.0
Removal from State	35	1.4	31	1.4	2	0.9	2	5.6
Unknown	0	0.0	0	0.0	0	0.0	0	0.0

Note: Percentages are calculated based upon the total number of deaths in each race category.

Source: Delaware Health and Social Services, Division of Public Health, Delaware Health Statistics Center

TABLE F-27. LIFE EXPECTANCY AT BIRTH* BY RACE AND SEX, DELAWARE, 1995-2015

Year	Race and Sex								
	All Races			White			Black		
	Both Sexes	Male	Female	Both Sexes	Male	Female	Both Sexes	Male	Female
2015	79.2	76.5	81.9	79.7	77.0	82.5	76.9	74.1	79.3
2014	79.6	76.9	82.1	79.8	77.1	82.5	76.7	73.8	79.4
2013	78.9	76.2	81.5	79.3	76.7	81.8	76.8	73.5	79.7
2012	79.5	77.0	81.8	79.7	77.3	81.9	77.8	74.3	81.1
2011	79.1	76.6	81.5	79.4	77.0	81.6	77.3	73.7	80.6
2010	79.1	76.4	81.7	79.4	76.9	81.7	76.7	72.5	80.7
2009	78.9	76.3	81.4	79.6	77.1	82.1	76.0	72.7	79.0
2008	78.3	75.7	80.8	78.9	76.3	81.4	75.7	72.7	78.4
2007	78.8	76.0	81.5	79.2	76.5	81.9	76.2	72.9	79.3
2006	78.4	75.7	81.0	79.1	76.4	81.7	74.8	71.4	77.8
2005	77.7	75.0	80.2	78.4	75.7	81.0	74.1	71.3	76.6
2004	77.8	74.9	80.5	78.3	75.5	80.9	73.8	70.4	77.0
2003	76.9	74.5	80.0	78.1	75.3	80.7	72.6	69.2	75.8
2002	77.3	74.6	79.8	77.8	75.4	80.1	73.8	69.5	77.9
2001	76.3	73.9	78.7	77.1	74.6	79.5	72.1	69.5	74.4
2000	76.5	73.9	79.0	77.1	74.5	79.6	72.5	69.4	75.5
1999	76.8	73.9	79.6	77.6	74.7	80.3	72.6	68.8	76.2
1998	75.9	73.3	78.4	77.0	74.5	79.4	70.3	66.9	73.5
1997	75.8	73.3	78.2	76.7	74.2	79.1	71.0	68.3	73.5
1996	75.4	72.5	78.1	76.7	73.9	79.4	68.8	65.2	72.2
1995	75.5	72.5	78.4	76.8	74.2	79.4	68.9	64.4	73.5

Note:

*Life expectancy at birth is the average expected lifetime of people born in the listed year.

Source: Delaware Health and Social Services, Division of Public Health, Delaware Health Statistics Center

TABLE F-28. AVERAGE REMAINING YEARS OF LIFE* BY AGE, RACE, AND SEX, DELAWARE, 2015

Age Group	Race and Sex								
	All Races			White			Black		
	Both Sexes	Male	Female	Both Sexes	Male	Female	Both Sexes	Male	Female
0-5	79.2	76.5	81.9	79.7	77.0	82.5	76.9	74.1	79.3
5-10	75.0	72.2	77.6	75.2	72.4	78.1	72.9	70.1	75.2
10-15	70.0	67.2	72.6	70.2	67.4	73.1	67.9	65.1	70.3
15-20	65.0	62.3	67.7	65.3	62.4	68.1	62.9	60.2	65.3
20-25	60.2	57.5	62.7	60.4	57.6	63.1	58.1	55.6	60.3
25-30	55.5	52.9	57.9	55.6	53.0	58.2	53.6	51.3	55.5
30-35	50.8	48.4	53.1	50.9	48.4	53.5	49.0	46.8	50.8
35-40	46.2	43.9	48.4	46.4	43.9	48.8	44.4	42.3	46.0
40-45	41.6	39.4	43.7	41.8	39.5	44.1	39.8	37.8	41.3
45-50	37.1	34.8	39.1	37.3	34.9	39.6	35.2	33.3	36.7
50-55	32.6	30.4	34.6	32.8	30.5	35.0	30.9	28.9	32.4
55-60	28.4	26.3	30.3	28.6	26.5	30.5	26.7	24.6	28.4
60-65	24.4	22.5	26.1	24.6	22.7	26.4	22.9	20.9	24.3
65-70	20.6	18.9	22.0	20.7	19.0	22.2	19.3	17.6	20.5
70-75	16.9	15.4	18.2	17.0	15.4	18.3	15.9	14.5	17.0
75-80	13.8	12.5	14.8	13.8	12.5	14.9	13.1	11.6	14.1
80-85	11.0	10.0	11.7	10.9	10.0	11.6	10.7	8.9	11.8
85+	8.8	7.9	9.4	8.8	8.0	9.3	8.5	6.7	9.5

Note: *Average number of years of life remaining at the beginning of the age interval.

Source: Delaware Health and Social Services, Division of Public Health, Delaware Health Statistics Center

TABLE F-29. MATERNAL DEATHS BY COUNTY AND DELAWARE, 1986-2015

Year	Area			
	Delaware	Kent	New Castle	Sussex
2015	1	0	1	0
2014	1	0	1	0
2013	0	0	0	0
2012	2	0	0	2
2011	1	0	0	1
2010	2	0	0	2
2009	4	1	3	0
2008	3	1	2	0
2007	1	0	1	0
2006	1	0	1	0
2005	3	0	3	0
2004	1	0	1	0
2003	2	0	2	0
2002	0	0	0	0
2001	2	0	1	1
2000	3	1	2	0
1999	1	0	1	0
1998	2	0	2	0
1997	1	0	1	0
1996	0	0	0	0
1995	0	0	0	0
1994	0	0	0	0
1993	0	0	0	0
1992	0	0	0	0
1991	1	0	0	1
1990	0	0	0	0

Note: Prior to 1999, maternal deaths included ICD-9 categories 630-676. For 1999 and later, maternal deaths include ICD-10 categories O00-O95, O98-O99, and A34.

Source: Delaware Health and Social Services, Division of Public Health, Delaware Health Statistics Center

TABLE F-30. FIVE-YEAR AGE-ADJUSTED MORTALITY RATES FOR SELECTED CAUSES OF DEATH BY COUNTY AND DELAWARE, 2011-2015

LEADING CAUSES OF DEATH	AREA				RACE	
	DE	Kent	NCC	Sussex	White	Black
Malignant neoplasms	169.3	198.8	169.0	156.9	168.3	191.4
Diseases of the heart	158.8	193.9	152.6	153.8	156.4	181.1
Chronic lower respiratory diseases	40.3	50.2	39.5	37.5	42.4	33.5
Cerebrovascular diseases	36.1	39.5	41.6	26.7	34.1	47.2
Dementia	36.9	42.6	43.6	25.1	36.8	42.0
Accidents (unintentional injuries)	41.2	45.4	39.6	44.9	46.7	29.5
Diabetes mellitus	19.7	21.5	20.3	17.4	16.7	37.8
Alzheimer's disease	17.3	21.6	17.4	15.3	17.2	19.6
Nephritis, nephrotic syndrome, and nephrosis	14.0	17.2	15.2	10.9	12.0	26.6
Influenza and pneumonia	12.6	14.4	14.2	9.2	12.8	12.5
Septicemia	11.7	16.8	11.2	9.9	11.2	15.7
Intentional self-harm (suicide)	12.6	14.2	12.0	12.7	15.4	5.5
Other diseases of respiratory system	9.2	11.4	9.8	7.3	9.4	8.5
Chronic liver disease and cirrhosis	8.4	9.0	7.2	11.0	9.3	6.2
Certain conditions originating in the perinatal period	6.2	5.0	7.5	3.6	3.6	11.2
Assault (homicide)	6.6	5.1	8.3	2.8	2.7	18.0
Parkinson's disease	6.8	6.2	7.5	6.0	7.5	3.3
Human immunodeficiency virus (HIV)	3.4	3.1	4.0	2.2	1.0	13.2
Essential hypertension and hypertensive renal disease	4.5	6.7	4.1	4.1	4.0	7.3
Pneumonitis due to solids and liquids	4.6	4.4	5.2	3.8	4.7	3.9
Aortic aneurysm and dissection	2.9	4.2	2.8	2.4	2.9	3.0
Congenital malformations, deformations, and chromosomal abnormalities	2.8	3.4	2.5	3.0	2.8	2.9

Notes:

1. Rates per 100,000, adjusted to U.S. 2000 population.
2. See Appendix E for ICD-10 cause of death codes.
3. "NA" indicates rate does not meet standards of reliability or precision; based on fewer than 20 deaths in the numerator.

Source: Delaware Health and Social Services, Division of Public Health, Delaware Health Statistics Center

TABLE F-31. FIVE-YEAR AGE-ADJUSTED MORTALITY RATES FOR SELECTED LEADING CAUSES OF DEATH BY COUNTY, DELAWARE, 1995-2015

Cause of Death/ Area	1995 -1999	1996 -2000	1997 -2001	1998 -2002	1999 -2003	2000 -2004	2001 -2005	2002 -2006	2003 -2007	2004 -2008	2005 -2009	2006 -2010	2007 -2011	2008 -2012	2009 -2013	2010 -2014	2011 -2015
Diseases of the heart																	
Delaware	283.6	275.1	267.4	257.5	252.3	244.2	236.7	223.9	215.1	201.7	190.0	178.8	172.6	165.6	162.7	160.3	158.8
Kent	312.7	308.3	304.4	296.9	291.0	279.6	275.3	267.2	262.7	251.6	243.1	233.7	223.9	211.3	207.1	200.2	193.9
New Castle	276.5	267.1	259.7	250.9	246.2	240.3	233.5	220.1	211.3	196.1	182.9	171.0	165.4	158.3	156.0	153.9	152.6
Sussex	284.5	276.3	265.3	251.9	246.4	235.3	224.0	209.7	198.6	187.4	176.6	166.1	160.8	156.7	153.6	153.7	153.8
Malignant neoplasms																	
Delaware	228.2	221.2	218.0	210.9	206.7	202.9	201.3	195.0	193.9	192.0	186.1	183.5	181.4	178.4	173.8	172.2	169.3
Kent	228.8	220.4	221.9	219.0	217.8	211.9	213.8	206.3	208.8	210.6	208.1	206.8	205.9	208.0	199.6	199.5	198.8
New Castle	230.5	223.4	219.9	212.7	206.7	203.2	202.3	195.2	192.8	192.8	187.1	184.2	184.4	181.1	175.8	172.7	169.0
Sussex	223.4	218.0	213.1	203.9	202.0	198.6	194.2	190.6	190.4	183.0	175.0	171.3	164.3	158.9	158.0	158.5	156.9
Cerebrovascular diseases																	
Delaware	50.8	51.8	51.6	51.7	51.0	48.8	45.9	44.1	41.5	39.0	38.9	38.2	37.7	37.2	36.9	36.3	36.1
Kent	63.4	60.6	55.1	55.8	53.8	50.6	49.4	48.4	42.6	39.4	41.2	39.0	36.7	39.0	39.0	38.4	39.5
New Castle	50.0	53.1	53.8	54.0	54.1	52.4	49.4	48.0	47.3	44.6	44.1	43.3	43.4	42.2	42.6	41.8	41.6
Sussex	45.5	44.1	45.0	44.3	42.9	40.6	36.8	34.1	30.0	28.5	28.4	29.0	28.8	28.5	27.3	27.1	26.7
Chronic lower respiratory diseases																	
Delaware	41.4	42.5	41.9	42.2	41.3	40.5	41.0	40.6	39.8	41.4	41.9	41.2	42.2	41.9	41.0	40.4	40.3
Kent	54.2	52.5	49.4	45.1	44.7	45.7	48.9	49.6	51.4	55.5	55.9	54.7	55.7	55.9	50.6	49.3	50.2
New Castle	39.2	41.5	41.8	41.5	40.5	40.0	39.4	39.2	39.2	41.2	41.5	40.9	42.2	41.3	40.5	39.9	39.5
Sussex	38.9	38.7	37.7	41.8	40.6	38.5	40.0	38.8	35.8	35.5	36.0	35.5	36.1	36.2	37.3	37.5	37.5
Diabetes mellitus																	
Delaware	27.9	26.9	26.9	26.4	25.8	25.8	26.0	24.6	24.0	22.8	22.0	20.6	20.7	20.6	20.0	19.9	19.7
Kent	31.9	28.8	27.6	28.3	28.0	27.3	30.6	30.5	29.0	28.6	28.8	26.3	25.2	23.9	23.7	21.4	21.5
New Castle	26.6	26.6	27.3	26.2	25.1	26.1	26.1	24.4	24.4	23.3	22.2	21.1	21.9	21.9	21.1	21.0	20.3
Sussex	28.6	26.6	25.9	26.0	26.2	24.6	23.7	21.8	20.8	18.9	18.0	16.5	16.3	16.6	16.1	16.9	17.4
Influenza and pneumonia																	
Delaware	30.6	30.2	28.7	26.2	22.2	21.1	18.7	16.9	15.0	14.7	13.8	12.9	12.4	12.1	11.9	12.0	12.6
Kent	32.9	36.5	34.1	31.7	27.3	24.9	20.4	19.9	18.1	17.3	16.1	15.0	13.8	14.4	13.8	14.4	14.4
New Castle	28.2	27.5	25.1	23.2	19.2	17.7	15.8	14.4	13.0	13.6	13.6	13.4	13.4	13.2	12.9	13.2	14.2
Sussex	35.1	33.3	34.4	30.2	26.3	26.9	23.9	20.4	17.6	15.5	13.0	11.1	10.2	9.4	9.4	9.1	9.2
Alzheimer's disease																	
Delaware	9.4	11.1	13.2	14.6	16.5	17.0	18.0	18.5	19.2	19.5	18.9	18.9	18.5	18.1	17.3	17.1	17.3
Kent	4.0	5.0	8.8	10.1	12.1	12.8	14.1	13.2	15.9	17.9	18.6	20.3	22.7	22.7	22.0	20.4	21.6
New Castle	11.7	13.8	16.0	17.4	18.8	18.1	18.1	18.4	18.6	17.8	17.1	17.0	15.5	15.3	15.7	16.6	17.4
Sussex	6.9	8.2	9.1	10.8	13.7	16.9	19.8	21.4	22.2	23.7	22.4	21.7	21.9	20.8	18.0	16.4	15.3
Nephritis, nephrotic syndrome, and nephrosis																	
Delaware	13.2	13.5	13.6	14.1	14.2	14.5	14.4	14.9	15.3	16.0	16.4	16.5	16.2	15.2	14.6	14.1	14.0
Kent	10.8	12.4	15.3	17.6	18.0	19.9	18.3	16.7	15.8	17.5	16.1	16.5	16.3	15.6	14.5	16.0	17.2
New Castle	14.5	14.2	13.8	13.6	13.4	13.8	14.0	15.0	16.3	17.4	18.0	18.3	18.0	16.6	15.8	15.4	15.2
Sussex	11.5	12.8	12.2	13.7	14.3	13.1	13.0	13.5	13.1	12.4	13.6	13.2	12.8	12.6	12.7	11.1	10.9
Septicemia																	
Delaware	14.4	15.2	15.6	16.0	16.0	15.9	15.1	14.3	13.4	13.1	12.6	11.9	11.5	11.3	11.4	11.4	11.7
Kent	11.9	13.8	14.4	15.7	17.0	18.3	17.7	18.5	18.1	18.2	17.3	18.0	17.4	16.6	17.2	17.8	16.8
New Castle	16.6	17.5	17.5	17.4	17.1	16.6	15.7	14.8	13.9	13.8	13.3	12.0	11.6	10.9	10.9	11.0	11.2
Sussex	10.9	10.8	12.0	12.8	13.0	13.3	12.8	11.4	10.2	9.4	9.2	8.6	8.2	9.0	9.1	8.8	9.9

TABLE F-31. (continued)

Cause of Death/ Area	1995 -1999	1996 -2000	1997 -2001	1998 -2002	1999 -2003	2000 -2004	2001 -2005	2002 -2006	2003 -2007	2004 -2008	2005 -2009	2006 -2010	2007 -2011	2008 -2012	2009 -2013	2010 -2014	2011 -2015
Intentional self-harm (suicide)																	
Delaware	11.2	11.0	11.2	10.7	11.1	11.1	11.0	10.2	10.4	10.6	10.7	11.0	11.3	11.9	12.0	12.3	12.6
Kent	11.9	12.6	12.1	11.7	11.5	10.5	10.1	10.3	9.8	10.3	11.2	11.2	11.3	12.4	13.0	14.0	14.2
New Castle	10.1	9.8	10.3	9.9	10.7	11.0	11.2	10.0	10.4	10.3	10.1	10.2	10.7	11.2	11.3	11.5	12.0
Sussex	14.0	13.3	12.8	12.2	11.8	11.4	10.4	10.8	11.0	11.8	12.1	13.5	13.1	13.5	12.9	13.2	12.7
Chronic liver disease and cirrhosis																	
Delaware	9.2	9.3	9.0	9.4	9.8	9.8	9.5	9.1	8.5	8.0	8.1	8.4	8.5	8.4	8.1	8.2	8.4
Kent	9.8	10.5	10.8	11.4	12.1	11.5	10.7	10.1	9.7	8.7	9.2	9.5	9.9	8.9	8.2	8.6	9.0
New Castle	8.8	9.0	8.3	8.6	9.1	9.5	8.9	8.9	8.0	7.6	7.3	7.6	7.4	7.6	7.2	7.1	7.2
Sussex	9.5	9.0	9.7	10.1	10.5	10.1	10.5	9.3	9.2	8.7	9.0	9.3	10.1	10.0	9.9	10.5	11.0
Assault (homicide)																	
Delaware	4.7	4.2	3.6	3.7	3.5	3.8	4.5	4.9	5.0	5.9	6.1	6.1	6.1	6.5	6.1	6.4	6.6
Kent	---	---	---	---	---	---	---	3.0	3.6	4.4	4.0	4.1	3.9	3.9	3.8	4.6	5.1
New Castle	5.3	5.1	4.5	4.6	4.3	4.6	5.3	5.9	6.0	7.1	7.4	7.5	7.4	8.2	7.9	8.1	8.3
Sussex	4.6	2.8	---	---	---	---	3.6	3.3	2.9	3.2	3.6	3.5	3.7	3.6	3.0	3.2	2.8
Certain conditions originating in the perinatal period																	
Delaware	5.8	6.7	7.8	8.3	8.4	8.2	8.2	7.4	7.0	6.8	6.9	6.1	6.1	6.2	5.8	5.5	6.2
Kent	5.9	6.8	7.2	7.9	8.1	8.1	7.9	6.5	5.1	4.9	5.4	4.2	4.7	5.5	4.9	4.1	5.0
New Castle	5.9	6.9	8.2	8.8	9.2	8.7	8.7	8.1	7.8	7.6	7.8	7.1	7.4	7.5	7.2	6.9	7.5
Sussex	5.5	5.8	7.2	6.8	6.0	6.3	6.6	6.1	6.4	6.1	5.8	4.6	3.5	2.7	2.8	2.9	3.6
Congenital malformations																	
Delaware	4.1	3.9	3.7	3.5	3.4	3.4	3.1	3.1	2.8	2.8	2.6	2.9	2.8	2.9	2.9	2.9	2.8
Kent	3.3	3.2	3.3	3.9	3.5	3.4	3.0	3.4	2.8	3.2	2.8	3.4	3.2	3.1	2.8	2.9	3.4
New Castle	3.9	3.9	3.6	3.2	3.1	3.2	3.0	2.9	2.7	2.6	2.5	2.6	2.6	2.9	2.9	2.7	2.5
Sussex	5.5	4.8	4.6	4.0	3.9	3.8	3.7	3.6	3.4	3.0	2.6	3.2	3.0	2.9	3.4	3.2	3.0
Human immunodeficiency virus (HIV)																	
Delaware	12.5	9.9	8.1	8.2	8.8	8.4	8.2	7.7	7.2	6.5	6.0	5.5	5.1	4.6	4.0	3.8	3.4
Kent	8.0	5.9	5.2	4.8	5.2	5.1	5.1	5.2	5.8	5.6	5.1	5.6	4.7	4.3	3.7	3.5	3.1
New Castle	14.9	12.1	9.8	9.9	10.8	10.7	10.4	9.6	8.8	7.7	7.1	6.3	6.0	5.5	4.9	4.6	4.0
Sussex	8.3	5.9	5.2	5.8	5.5	4.3	3.7	3.9	3.5	3.9	3.8	3.4	3.2	2.5	---	2.3	2.2
Accidents (unintentional injuries)																	
Delaware	35.8	36.0	36.9	36.4	36.0	35.8	35.1	35.2	34.7	35.6	35.9	36.8	36.4	37.3	37.8	39.5	41.2
Kent	37.8	37.5	38.9	37.7	37.6	38.3	38.9	40.5	39.5	39.7	38.0	37.5	35.0	37.7	38.7	42.9	45.4
New Castle	33.4	34.0	34.5	34.6	33.7	32.3	31.6	31.8	31.6	32.7	33.2	34.2	34.4	34.9	35.7	37.5	39.6
Sussex	42.2	42.1	44.0	42.1	43.0	46.4	44.1	42.5	42.4	43.9	44.8	46.6	45.9	46.0	44.9	44.0	44.9
Essential hypertension and hypertensive renal disease																	
Delaware	4.2	4.8	5.2	5.7	5.9	6.9	7.2	6.8	6.3	6.0	5.4	5.1	5.0	4.8	5.0	4.7	4.5
Kent	4.9	4.5	5.5	6.3	6.3	7.1	8.9	9.1	7.8	7.8	7.6	7.4	7.3	7.7	8.1	7.6	6.7
New Castle	3.6	4.4	4.9	5.4	5.9	7.2	7.5	7.0	6.9	6.3	5.6	5.1	5.1	4.7	4.6	4.3	4.1
Sussex	5.6	6.1	5.7	5.9	5.6	5.9	5.4	5.0	4.4	4.4	4.1	4.0	3.8	3.7	4.2	3.9	4.1
Aortic aneurysm and dissection																	
Delaware	6.5	6.4	6.6	6.3	6.7	6.3	5.8	5.0	4.5	3.7	3.4	3.2	3.2	3.2	3.1	3.0	2.9
Kent	8.6	9.0	9.3	9.9	10.0	9.3	8.3	7.2	5.5	4.0	3.0	2.8	2.8	3.4	4.3	4.5	4.2
New Castle	5.9	5.8	6.2	5.9	6.3	5.8	5.4	4.5	3.8	3.2	3.2	3.2	3.3	3.5	3.1	2.8	2.8
Sussex	6.6	6.5	6.0	5.4	5.9	6.1	5.7	5.3	5.4	4.7	4.1	3.5	3.2	2.7	2.4	2.4	2.4

TABLE F-31. (continued)

Cause of Death/ Area	1995 -1999	1996 -2000	1997 -2001	1998 -2002	1999 -2003	2000 -2004	2001 -2005	2002 -2006	2003 -2007	2004 -2008	2005 -2009	2006 -2010	2007 -2011	2008 -2012	2009 -2013	2010 -2014	2011 -2015
Pneumonitis due to solids and liquids																	
Delaware	7.0	7.8	8.9	9.1	9.7	8.9	8.2	7.1	6.3	5.4	5.2	4.8	4.6	4.3	4.3	4.2	4.6
Kent	4.5	4.8	4.1	5.0	5.9	5.3	5.4	5.0	3.9	3.3	3.4	3.0	3.4	3.5	3.6	3.9	4.4
New Castle	8.3	8.9	10.6	10.5	10.9	9.9	9.2	7.5	6.6	5.5	5.2	4.7	4.6	4.4	4.6	4.5	5.2
Sussex	5.3	7.1	7.7	8.5	9.3	9.1	7.8	7.5	7.1	6.3	6.1	5.8	5.4	4.7	4.2	4.0	3.8
Other diseases of respiratory system																	
Delaware	7.9	8.3	8.4	8.8	8.4	8.7	8.5	8.9	8.8	9.0	8.8	8.8	9.0	9.3	9.2	9.3	9.2
Kent	7.2	9.2	8.9	9.6	9.5	9.5	9.0	10.3	10.6	10.5	10.6	11.3	11.7	12.1	12.2	11.9	11.4
New Castle	7.5	7.8	8.1	8.3	8.2	8.8	8.7	8.7	8.3	9.0	8.7	8.4	9.3	10.2	9.6	9.9	9.8
Sussex	9.3	9.3	8.9	9.4	8.4	8.3	7.6	8.4	8.6	8.3	8.3	8.3	7.2	6.7	7.4	7.0	7.3
Parkinson's disease																	
Delaware	4.0	4.6	5.1	5.5	5.5	5.4	5.7	5.5	5.6	5.6	5.6	5.2	5.7	5.8	6.2	6.6	6.8
Kent	---	---	4.3	4.6	4.7	4.1	4.7	4.6	4.4	4.4	5.5	5.1	5.2	5.3	5.4	5.4	6.2
New Castle	4.4	5.0	5.5	6.0	5.9	5.9	6.2	6.1	6.4	6.3	6.1	5.6	6.1	6.3	6.9	7.5	7.5
Sussex	3.4	4.1	4.7	5.0	4.9	5.1	5.3	4.7	4.8	5.1	4.9	4.6	5.2	5.5	5.6	5.7	6.0
Dementia																	
Delaware	5.8	6.5	7.2	8.5	9.5	10.6	12.1	16.1	19.8	24.7	30.0	34.4	36.4	38.9	38.4	38.0	36.9
Kent	6.8	8.6	8.8	12.6	13.9	14.6	13.1	14.2	15.3	20.5	26.3	30.3	35.7	40.4	41.7	40.9	42.6
New Castle	5.5	6.3	7.3	8.3	9.2	10.6	13.2	18.8	24.8	31.8	38.6	43.8	45.8	47.5	46.0	45.1	43.6
Sussex	5.9	5.8	5.9	6.7	7.7	8.6	9.7	11.7	12.2	13.4	16.1	19.8	21.1	24.5	25.1	26.2	25.1

Notes:

1. Rates per 100,000, adjusted to U.S. 2000 population.
2. See Appendix E for ICD-9 and ICD-10 cause of death codes.
3. "---" indicates rate does not meet standards of reliability or precision; based on fewer than 20 deaths in the numerator.

Source: Delaware Health and Social Services, Division of Public Health, Delaware Health Statistics Center

TABLE F-32. FIVE-YEAR AGE-ADJUSTED MORTALITY RATES FOR SELECTED LEADING CAUSES OF DEATH BY RACE AND SEX, DELAWARE, 1995-2015

Cause of Death/ Race-Sex	1995 -1999	1996 -2000	1997 -2001	1998 -2002	1999 -2003	2000 -2004	2001 -2005	2002 -2006	2003 -2007	2004 -2008	2005 -2009	2006 -2010	2007 -2011	2008 -2012	2009 -2013	2010 -2014	2011 -2015
Diseases of the heart																	
White	278.6	270.1	262.1	251.9	246.3	237.2	229.4	217.3	209.0	197.2	186.5	176.0	170.8	163.3	160.1	157.8	156.4
Male	348.7	341.3	328.7	312.4	303.9	294.7	283.0	268.7	261.6	248.9	234.3	222.1	217.3	208.1	203.3	202.3	201.8
Female	225.8	215.9	210.6	205.2	201.1	192.0	187.0	176.7	167.2	157.0	148.6	139.7	133.9	127.8	125.2	122.2	119.8
Black	321.5	311.9	306.3	296.9	298.4	298.7	293.4	278.4	268.3	241.3	220.1	206.0	192.0	187.9	185.6	185.5	181.1
Male	393.2	378.9	364.6	356.0	357.2	362.7	347.8	338.1	325.2	293.0	263.7	261.0	245.2	234.1	225.7	224.0	217.5
Female	271.0	264.8	263.9	254.8	257.1	252.8	253.7	235.1	224.5	202.5	186.4	166.1	152.5	154.2	154.2	156.3	154.5
Malignant neoplasms																	
White	219.7	214.1	212.8	206.7	201.6	199.2	198.0	191.7	191.7	191.5	185.3	182.8	181.2	177.1	172.4	171.1	168.3
Male	275.3	264.9	259.5	253.3	247.7	245.9	244.5	237.1	233.0	231.6	222.4	220.1	214.6	209.8	204.7	202.4	198.5
Female	185.8	182.6	182.9	176.2	171.1	167.8	166.7	160.9	163.5	163.7	159.0	156.0	157.2	153.8	149.3	148.7	146.5
Black	302.7	285.0	267.6	253.6	254.8	241.8	240.0	233.3	223.8	212.2	207.8	202.2	197.8	202.3	197.9	195.8	191.4
Male	406.7	371.3	343.0	334.0	334.1	309.9	311.5	300.6	283.3	263.4	261.0	256.4	250.0	250.5	246.0	238.2	222.2
Female	243.1	235.3	223.7	208.4	207.6	199.2	195.2	189.8	184.9	178.0	173.0	166.8	162.6	170.1	166.9	168.0	172.6
Cerebrovascular diseases																	
White	48.0	49.2	49.3	49.2	48.8	46.4	43.4	41.9	39.0	36.6	36.3	35.8	35.6	35.2	34.7	34.5	34.1
Male	50.0	50.5	52.0	50.8	50.3	48.7	47.0	42.5	38.7	35.5	34.0	33.1	34.9	35.6	35.2	35.3	34.9
Female	45.8	47.3	46.7	47.5	47.1	44.6	41.1	41.2	38.6	36.9	37.3	36.9	35.4	34.7	34.1	33.8	33.4
Black	71.0	70.7	68.6	69.9	66.8	67.2	64.5	61.1	60.2	57.8	57.3	54.3	50.9	49.4	48.9	46.2	47.2
Male	80.5	78.1	66.8	67.4	63.8	60.0	61.8	64.1	66.7	66.1	66.0	63.5	61.5	57.6	55.6	55.7	54.4
Female	62.7	64.4	67.2	68.6	66.4	68.7	64.4	58.5	55.6	52.3	51.5	47.4	43.3	43.7	44.0	40.1	42.6
Chronic lower respiratory diseases																	
White	42.5	43.5	42.7	43.1	42.2	41.3	42.3	42.0	41.4	43.1	43.8	43.1	44.4	43.9	43.0	42.6	42.4
Male	55.5	54.5	52.3	51.1	47.7	46.0	46.7	45.4	45.0	47.9	47.7	45.5	46.3	44.5	42.6	42.5	44.4
Female	36.5	38.3	38.0	38.9	39.4	38.6	39.6	39.9	38.9	39.5	41.0	41.3	43.0	43.6	43.6	42.8	41.2
Black	34.4	35.6	35.8	35.1	34.0	34.4	32.2	32.5	32.3	34.1	33.2	33.2	33.9	35.1	33.3	32.8	33.5
Male	48.7	51.1	50.9	53.0	51.9	50.3	46.3	47.7	46.6	51.4	48.7	47.3	47.6	46.6	42.5	41.0	42.1
Female	26.0	25.8	26.0	24.0	22.4	23.9	23.6	23.7	24.2	24.9	25.0	25.6	26.0	28.2	27.6	27.7	28.3
Diabetes mellitus																	
White	23.8	23.2	23.5	22.7	22.4	22.2	22.8	21.5	20.8	19.8	19.3	17.8	17.5	17.7	17.1	16.7	16.7
Male	26.6	26.0	25.7	26.0	25.8	25.7	26.3	25.5	25.4	24.0	23.1	21.5	21.2	21.1	21.3	20.8	20.9
Female	21.9	21.3	21.8	20.3	19.7	19.6	20.2	18.6	17.5	16.7	16.2	14.6	14.3	14.6	13.4	13.3	13.2
Black	58.6	55.1	53.0	54.0	50.8	51.7	50.8	47.2	46.7	44.1	40.9	38.7	41.1	38.8	39.1	39.5	37.8
Male	62.4	59.1	59.5	62.1	54.7	56.1	54.4	50.9	49.6	50.5	46.5	45.0	42.5	43.4	46.1	45.1	45.1
Female	57.0	54.0	49.9	50.2	48.4	49.1	48.6	45.7	44.7	39.9	37.0	33.9	37.3	35.6	36.3	35.3	33.8
Influenza and pneumonia																	
White	30.5	30.3	29.2	26.7	22.6	21.4	18.8	17.0	15.0	14.7	14.1	13.1	12.5	12.2	12.1	12.0	12.8
Male	38.6	38.2	36.3	33.2	27.0	26.1	22.6	20.8	18.4	17.8	17.1	16.3	15.4	15.0	14.7	14.0	14.9
Female	25.8	25.9	25.1	22.8	19.7	18.5	16.4	14.4	12.9	12.8	12.1	11.0	10.5	10.3	10.4	10.7	11.3
Black	31.7	30.1	25.5	23.1	20.1	20.3	18.2	17.4	15.6	15.2	12.6	12.0	12.2	12.3	11.7	13.0	12.5
Male	46.6	45.0	39.0	32.8	28.7	31.8	28.5	26.1	24.3	24.8	18.6	17.6	17.3	15.0	13.9	14.8	14.2
Female	23.1	21.6	17.4	16.8	14.7	14.1	12.4	12.7	11.4	10.7	9.8	9.2	9.2	10.4	10.1	11.9	11.4

TABLE F-32. (continued)

Cause of Death/ Race-Sex	1995 -1999	1996 -2000	1997 -2001	1998 -2002	1999 -2003	2000 -2004	2001 -2005	2002 -2006	2003 -2007	2004 -2008	2005 -2009	2006 -2010	2007 -2011	2008 -2012	2009 -2013	2010 -2014	2011 -2015
Alzheimer's disease																	
White	9.8	11.5	13.8	15.3	17.1	17.4	18.5	18.9	19.7	20.2	19.5	19.2	18.8	18.2	17.2	16.9	17.2
Male	8.9	10.0	12.4	14.3	15.1	14.8	15.6	16.2	17.0	17.5	17.2	16.5	15.4	14.8	14.3	13.8	14.8
Female	10.3	12.1	14.6	15.8	18.1	18.9	20.1	20.3	21.1	21.6	20.6	20.8	20.9	20.4	18.9	18.8	18.6
Black	5.8	8.2	8.8	9.8	12.7	14.1	14.4	14.5	15.7	14.5	14.8	16.6	17.2	18.7	19.9	19.6	19.6
Male	---	---	---	---	---	14.2	---	---	13.4	12.7	12.3	13.6	13.7	13.4	15.2	14.8	15.8
Female	---	8.2	8.3	8.8	12.1	13.7	15.6	15.5	16.4	14.9	15.8	17.7	18.7	6.1	6.3	6.1	5.9
Nephritis, nephrotic syndrome, and nephrosis																	
White	11.3	11.2	11.1	11.9	12.2	12.6	12.5	13.0	13.1	13.8	14.0	14.2	13.9	13.3	12.8	12.2	12.0
Male	15.2	14.9	15.2	16.7	16.4	17.4	17.5	17.6	17.6	18.0	17.5	17.5	16.6	15.5	15.0	14.5	14.4
Female	9.3	9.2	8.7	9.1	9.7	9.7	9.5	9.9	10.1	10.9	11.6	11.9	12.2	11.9	11.3	10.5	10.3
Black	28.4	31.1	31.8	30.6	28.1	27.2	27.4	28.5	31.1	32.2	32.8	31.8	30.2	27.6	25.7	26.0	26.6
Male	32.7	38.7	35.8	39.0	37.4	36.6	35.3	39.7	41.8	42.5	40.8	40.0	38.3	33.2	30.2	32.7	33.8
Female	25.9	26.1	28.9	25.7	22.4	21.9	23.5	22.2	25.1	26.5	27.5	26.6	25.7	16.0	16.4	16.6	15.7
Septicemia																	
White	13.0	13.8	14.0	14.5	14.4	14.7	13.9	13.1	12.2	12.2	11.5	10.9	10.8	10.6	10.8	11.0	11.2
Male	15.3	16.0	16.0	16.7	15.8	16.5	15.5	14.9	14.3	14.0	12.6	12.1	12.1	11.3	12.0	12.6	12.5
Female	11.5	12.7	12.9	13.4	13.6	13.6	12.9	11.9	10.7	11.0	10.8	10.1	9.8	10.3	10.0	9.9	10.5
Black	25.7	25.9	28.7	28.1	28.9	25.7	24.6	23.2	21.9	19.9	19.7	18.1	15.9	15.7	15.3	14.7	15.7
Male	30.1	32.7	34.0	31.8	33.7	28.1	25.1	23.4	21.7	19.1	18.6	17.3	15.8	16.7	14.8	15.5	17.7
Female	23.7	22.1	25.7	26.3	26.1	23.9	24.6	23.2	21.9	20.3	20.3	18.3	15.9	12.8	13.2	12.2	12.9
Intentional self-harm (suicide)																	
White	12.7	12.8	12.9	12.3	13.0	12.9	12.6	12.0	12.5	12.5	12.7	13.3	13.7	14.3	14.7	15.4	15.4
Male	21.9	21.9	21.8	21.1	21.7	21.0	21.0	19.9	19.8	20.2	20.6	21.4	21.8	23.1	23.4	24.6	24.2
Female	4.3	4.4	4.7	4.4	5.1	5.5	5.0	4.8	5.7	5.3	5.3	5.5	5.9	5.8	6.5	6.7	7.1
Black	4.9	4.1	4.8	5.1	4.9	5.6	6.1	5.2	4.6	5.4	5.6	5.4	5.3	5.8	5.1	4.2	5.5
Male	9.7	7.7	8.9	10.0	9.3	10.1	10.8	9.9	8.2	9.5	10.8	10.3	9.7	10.2	9.5	7.3	8.5
Female	---	---	---	---	---	---	---	---	---	---	---	---	---	---	---	---	---
Chronic liver disease and cirrhosis																	
White	9.1	9.5	9.0	9.5	10.0	10.0	9.8	9.7	9.0	8.6	8.8	9.0	9.1	9.1	8.7	8.9	9.3
Male	13.0	12.6	11.8	11.6	12.1	11.5	11.8	12.4	11.8	11.7	12.5	12.9	13.0	13.3	12.8	12.8	13.3
Female	5.7	6.7	6.5	7.7	8.1	8.5	8.0	7.2	6.6	5.7	5.5	5.4	5.5	5.1	4.9	5.3	5.6
Black	10.0	8.6	9.1	9.0	9.5	9.3	8.2	7.3	6.6	6.4	6.3	7.0	7.0	6.9	6.4	6.3	6.2
Male	13.1	12.1	12.2	12.8	14.0	14.5	12.1	12.2	10.9	11.0	9.9	11.5	12.0	11.1	10.0	10.4	9.4
Female	7.1	---	6.4	---	5.8	---	---	---	---	---	---	---	---	---	---	---	5.5
Assault (homicide)																	
White	3.1	2.4	2.2	2.2	2.0	2.1	2.6	2.5	2.4	2.9	3.0	3.0	3.2	3.3	3.2	3.0	2.7
Male	3.7	2.9	2.7	2.6	2.5	2.5	3.5	3.4	3.3	4.1	4.1	4.1	4.4	4.8	4.4	4.2	3.7
Female	2.4	1.9	1.7	1.8	1.6	1.7	1.7	1.5	1.5	1.7	1.9	1.9	2.0	1.9	2.0	1.9	1.8
Black	11.7	11.7	9.0	9.0	8.9	9.8	11.3	13.5	14.1	16.2	16.2	16.5	15.2	16.3	15.2	16.7	18.0
Male	18.8	18.2	14.4	15.0	15.9	16.9	20.2	24.6	25.8	30.1	30.7	31.1	28.7	30.5	28.0	30.6	33.3
Female	5.4	5.7	---	---	---	---	---	---	---	---	---	---	---	---	---	---	---

TABLE F-32 (continued)

Cause of Death/ Race-Sex	1995 -1999	1996 -2000	1997 -2001	1998 -2002	1999 -2003	2000 -2004	2001 -2005	2002 -2006	2003 -2007	2004 -2008	2005 -2009	2006 -2010	2007 -2011	2008 -2012	2009 -2013	2010 -2014	2011 -2015
Certain conditions originating in the perinatal period																	
White	3.3	4.2	5.1	5.8	6.2	6.2	5.7	5.1	4.8	4.5	4.2	3.6	3.4	3.2	2.7	3.0	3.6
Male	3.4	4.7	5.7	6.3	6.9	6.5	5.9	5.3	5.4	5.1	5.1	4.4	4.2	4.1	3.3	3.8	4.2
Female	3.1	3.7	4.5	5.4	5.5	5.8	5.5	4.8	4.2	3.9	3.4	2.8	2.6	2.3	2.1	2.3	3.1
Black	13.9	14.7	16.7	16.6	16.2	15.1	16.4	14.9	14.6	14.2	15.0	13.2	13.1	13.3	12.5	10.7	11.2
Male	16.4	16.8	18.8	19.0	18.9	17.1	19.1	16.8	15.7	14.8	16.0	13.8	13.4	14.2	14.6	12.0	12.6
Female	11.4	12.5	14.5	14.1	13.4	13.2	13.8	13.1	13.4	13.5	14.0	12.6	12.7	12.5	10.4	9.4	9.8
Congenital malformations																	
White	4.2	4.0	3.7	3.3	3.3	3.3	3.1	3.1	2.8	2.8	2.6	3.0	3.0	3.1	3.3	3.1	2.8
Male	4.3	4.2	3.7	3.6	3.9	3.7	3.3	3.3	3.0	2.7	2.4	2.9	2.8	2.8	3.0	2.8	2.5
Female	4.2	3.9	3.7	3.1	2.7	2.9	2.8	2.8	2.7	2.8	2.8	3.1	3.3	3.4	3.6	3.4	3.1
Black	3.4	3.5	3.9	4.0	3.6	3.7	3.6	3.3	2.9	3.0	2.6	2.5	2.4	2.5	2.1	2.4	2.9
Male	4.3	4.2	3.7	3.6	3.9	3.7	3.3	3.3	3.0	2.7	2.4	2.9	2.8	2.8	3.0	2.8	2.5
Female	4.2	3.9	3.7	3.1	2.7	2.9	2.8	2.8	2.7	2.8	2.8	3.1	3.3	3.4	3.6	3.4	3.1
Human immunodeficiency virus (HIV)																	
White	4.7	3.0	2.0	2.2	2.6	2.5	2.4	2.3	2.1	2.0	1.8	1.8	1.7	1.5	1.2	1.2	1.0
Male	8.4	5.4	3.6	3.7	4.4	3.9	3.6	3.5	3.5	3.0	2.9	2.8	2.7	2.1	1.8	1.8	1.7
Female	---	---	---	---	---	---	---	---	---	---	---	---	---	---	---	---	---
Black	48.8	42.0	36.4	35.6	36.4	35.5	34.3	31.5	29.4	26.3	24.1	21.6	19.6	17.6	15.9	15.1	13.2
Male	80.3	66.9	56.7	55.8	54.8	52.6	51.3	46.1	40.0	32.7	29.5	26.7	25.4	24.2	24.8	23.1	19.2
Female	22.0	20.9	19.2	18.5	21.1	21.3	20.2	19.5	20.7	21.5	19.9	17.6	15.0	20.3	14.0	13.5	13.3
Accidents (unintentional injuries)																	
White	36.1	37.3	38.2	37.5	37.2	37.5	37.4	38.0	38.3	39.9	40.6	41.5	41.7	42.6	43.0	45.1	46.7
Male	48.4	50.1	50.9	50.6	51.4	51.5	51.8	53.2	54.5	55.7	57.1	57.0	57.0	57.4	57.3	59.9	62.8
Female	24.2	25.4	26.5	25.6	24.3	24.7	24.2	24.0	23.3	25.1	25.2	27.1	27.5	28.9	29.9	31.3	31.6
Black	36.5	34.2	36.2	37.5	37.3	35.2	32.1	29.6	26.4	24.2	24.6	26.1	24.4	25.4	26.5	27.7	29.5
Male	56.7	53.0	52.8	56.6	56.0	50.3	47.0	44.3	38.2	34.4	35.7	37.2	35.2	37.6	39.2	40.6	43.1
Female	21.4	18.6	22.0	21.1	21.7	21.9	19.7	17.6	16.6	15.4	15.4	16.5	14.9	19.8	19.8	20.8	22.8
Essential hypertension and hypertensive renal disease																	
White	3.5	4.2	4.5	5.0	5.1	5.7	6.0	5.7	5.2	4.8	4.4	4.3	4.3	4.2	4.6	4.2	4.0
Male	3.8	4.3	4.4	4.7	5.0	5.3	5.6	5.5	4.8	4.4	4.5	4.2	3.8	3.8	4.2	3.6	3.8
Female	3.3	4.0	4.3	5.0	5.0	5.8	6.1	5.7	5.4	4.8	4.3	4.2	4.4	4.2	4.7	4.4	4.0
Black	9.8	10.0	10.5	11.4	12.2	15.4	16.4	15.2	14.3	14.5	11.6	9.8	9.1	8.6	7.4	7.4	7.3
Male	12.7	12.9	13.1	11.8	14.2	19.8	20.4	19.5	20.2	18.1	12.0	10.4	10.1	9.4	8.0	8.6	7.5
Female	8.4	8.1	9.2	10.9	11.0	13.1	14.3	12.5	10.3	11.7	10.4	8.4	7.6	3.5	3.8	4.5	4.9
Aortic aneurysm and dissection																	
White	6.5	6.5	6.8	6.4	6.8	6.3	5.8	5.0	4.4	3.7	3.4	3.2	3.2	3.3	3.0	3.0	2.9
Male	10.6	10.4	11.3	10.0	9.6	8.8	8.3	6.9	6.2	5.5	5.1	4.7	4.4	4.3	3.8	3.9	3.8
Female	3.9	4.0	3.9	4.2	4.8	4.4	4.0	3.6	2.9	2.3	2.1	1.9	2.2	2.4	2.4	2.2	2.2
Black	5.6	5.0	5.0	5.5	6.0	6.9	6.4	5.4	5.1	4.1	3.7	3.6	3.4	3.2	3.8	3.4	3.0
Male	---	---	---	---	---	---	---	---	---	---	---	---	---	---	---	---	---
Female	---	---	---	---	---	7.0	6.6	---	---	---	---	---	---	---	---	---	---

TABLE F-32.(continued)

Cause of Death/ Race-Sex	1995 -1999	1996 -2000	1997 -2001	1998 -2002	1999 -2003	2000 -2004	2001 -2005	2002 -2006	2003 -2007	2004 -2008	2005 -2009	2006 -2010	2007 -2011	2008 -2012	2009 -2013	2010 -2014	2011 -2015
Pneumonitis due to solids and liquids																	
White	6.8	7.5	8.5	8.9	9.4	8.6	7.8	6.8	6.1	5.4	5.1	4.8	4.7	4.4	4.3	4.2	4.7
Male	10.1	10.5	11.8	11.5	11.6	10.5	9.5	7.9	7.4	6.4	6.3	6.1	6.2	6.2	6.5	6.5	7.0
Female	5.1	5.8	6.7	7.3	8.0	7.4	6.8	5.9	5.2	4.6	4.3	3.8	3.7	3.3	2.9	2.6	3.2
Black	8.8	10.5	11.3	10.4	11.7	10.6	10.7	9.0	8.1	5.6	5.5	4.4	3.9	3.2	4.2	4.6	3.9
Male	---	15.4	19.8	17.9	19.9	18.5	18.0	15.2	12.9	---	---	9.1	---	---	7.9	8.4	---
Female	---	---	---	---	6.8	---	6.7	---	---	---	---	---	---	---	---	---	---
Other diseases of respiratory system																	
White	8.2	8.5	8.6	8.8	8.5	8.9	8.6	9.1	9.0	9.0	8.7	8.6	8.8	9.4	9.6	9.7	9.4
Male	10.0	10.6	10.2	9.8	9.7	10.1	10.1	11.3	11.0	10.4	10.3	10.2	9.9	11.4	12.1	12.1	11.7
Female	6.6	7.0	7.3	8.1	7.8	8.1	7.7	7.7	7.5	8.0	7.6	7.5	7.9	7.9	7.7	7.8	7.7
Black	6.1	6.9	7.1	7.9	7.3	7.4	7.1	7.0	7.4	9.3	9.8	10.1	10.4	9.2	7.6	8.4	8.5
Male	---	---	---	---	---	9.1	10.5	9.6	9.7	11.4	12.7	13.7	14.6	13.1	12.3	13.3	11.6
Female	---	7.9	8.2	7.7	6.5	6.4	---	5.5	5.9	8.0	8.3	8.2	8.0	7.1	5.4	4.6	4.7
Parkinson's disease																	
White	4.3	5.0	5.5	6.0	5.9	5.9	6.1	5.8	6.0	6.1	6.0	5.7	6.2	6.4	6.9	7.2	7.5
Male	6.0	6.8	8.0	8.5	8.7	8.9	9.1	8.8	9.0	8.8	8.4	8.0	8.0	8.2	9.1	9.9	10.1
Female	3.4	3.9	4.2	4.6	4.3	4.2	4.4	4.1	4.2	4.5	4.6	4.4	5.1	5.2	5.4	5.4	5.6
Black	---	---	---	---	---	---	---	---	---	---	---	---	---	---	---	---	3.3
Male	---	---	---	---	---	---	---	---	---	---	---	---	---	---	---	---	---
Female	---	---	---	---	---	---	---	---	---	---	---	---	---	---	---	---	---
Dementia																	
White	6.1	6.6	7.4	8.6	9.5	10.1	11.8	15.5	18.8	23.9	29.3	34.0	36.2	39.1	38.5	38.1	36.8
Male	7.0	7.9	7.8	7.9	8.3	8.7	9.4	12.8	15.6	20.0	24.9	29.3	31.1	33.9	33.8	33.8	31.7
Female	5.6	6.1	7.2	8.9	10.1	10.9	13.0	16.9	20.5	25.8	31.6	36.4	38.9	41.5	40.7	40.2	39.5
Black	---	6.0	5.8	8.7	10.4	15.4	16.3	23.1	30.1	34.3	37.1	40.4	41.8	41.9	41.2	41.9	42.0
Male	---	---	---	19.0	18.2	22.5	22.3	29.6	29.2	35.4	40.8	42.3	40.2	41.1	42.0	41.6	42.3
Female	---	---	---	---	---	12.5	13.5	20.1	30.2	33.8	34.9	39.1	42.3	41.8	40.0	41.6	41.3

Notes:

1. Rates per 100,000, adjusted to U.S. 2000 population.
2. See Appendix E for ICD-9 and ICD-10 cause of death codes.
3. "—" indicates rate does not meet standards of reliability or precision; based on fewer than 20 deaths in the numerator.

Source: Delaware Health and Social Services, Division of Public Health, Delaware Health Statistics Center