

DELAWARE VITAL STATISTICS ANNUAL REPORT POPULATION, 2019

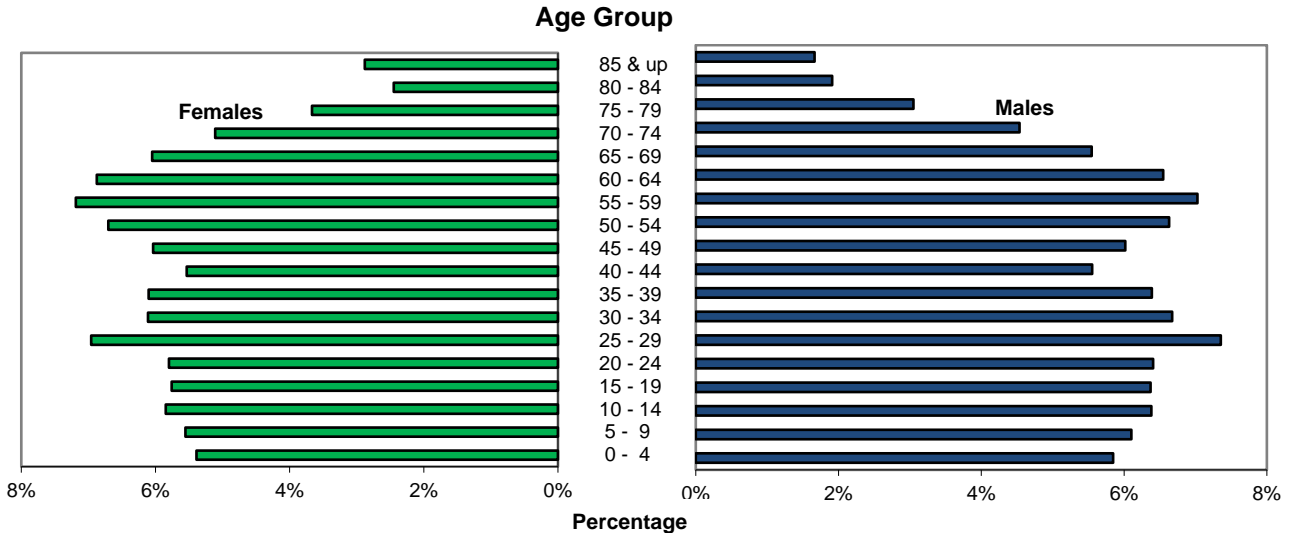


Suggested Citation:

Delaware Health Statistics Center. *Delaware Vital Statistics Annual Report, 2019*.
Delaware Department of Health and Social Services, Division of Public Health, 2021.

In 2019, nearly 52 percent of Delaware’s population was female. Females made up a greater proportion of the older age groups, which reflects the longer female life expectancy. Delaware females born in 2019 can expect to live an average of 82.2 years versus males who can expect to live 75.9 years.

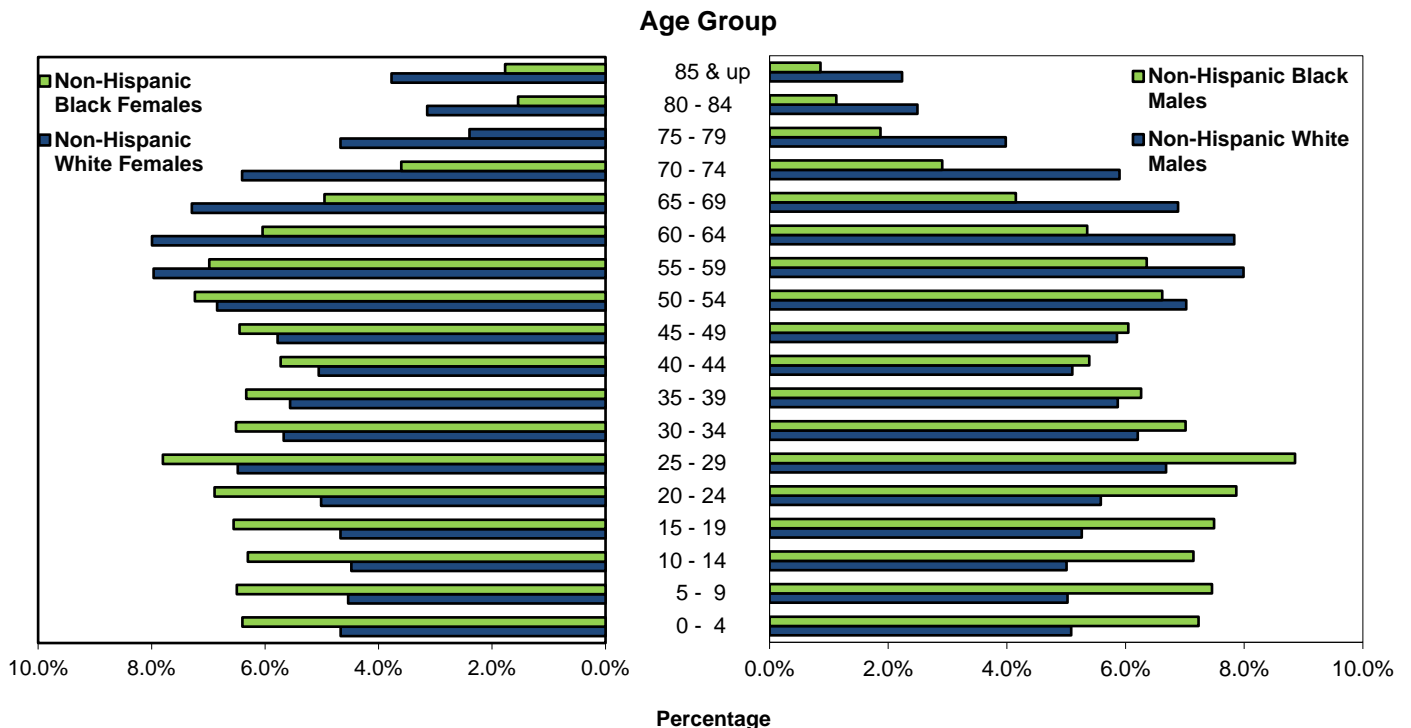
Figure 3. Population by Gender, Delaware, 2019



Source: Delaware Department of Social Services, Division of Public Health, Delaware Health Statistic Center

When the population was broken down by race, the highest proportion of females in the older age groups appeared in the non-Hispanic white population. However, both non-Hispanic black males and females had a greater percentage of their population in the 0-49 year age range than non-Hispanic white males and females. In the 55 and above age range for both males and females, whites made up a greater proportion of the population.

Figure 4. Non-Hispanic Population by Gender and Race, Delaware, 2019



Source: Delaware Department of Social Services, Division of Public Health, Delaware Health Statistic Center

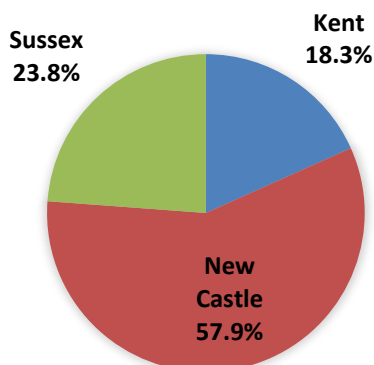
POPULATION

Delaware's three counties continued their increasing population trend, although they grew at different rates. Between 2000 and 2019, county populations grew annually by 2.1 percent for Kent, 0.6 percent for New Castle, and 2.5 percent for Sussex. Delaware's statewide increase was 1.2 percent.

In 2019, half of Delaware's 65 and older population resided in New Castle County. However, residents 65 and older represented a much larger proportion of the Sussex County population, where one in four residents was 65 or older, versus New Castle and Kent counties, where approximately one in six residents was 65 or older.

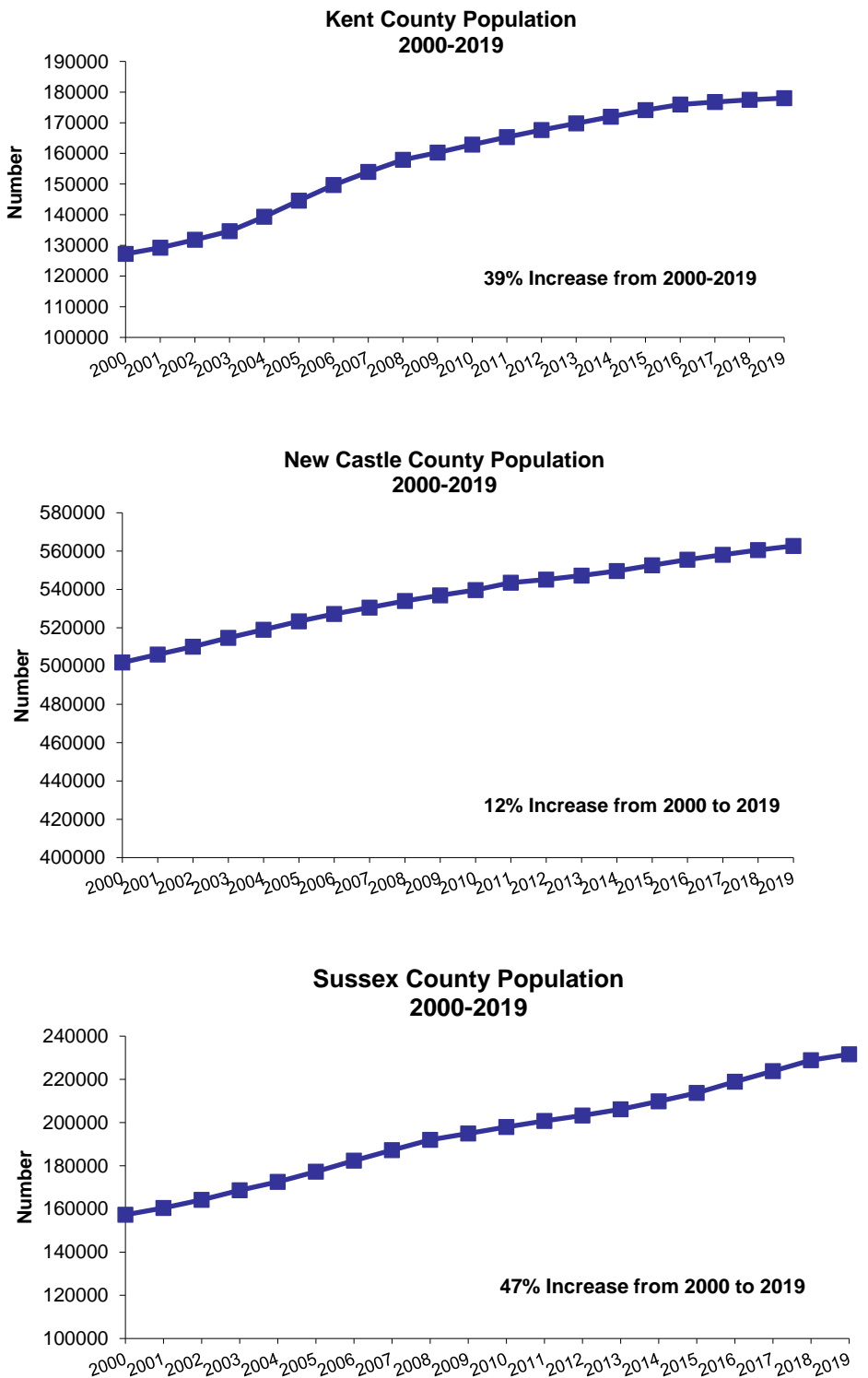
Over half of Delaware's total population resides in New Castle County, 58%.

Figure 6. Percent of Population by County, Delaware, 2019



Source: Delaware Department of Health and Social Services, Division of Public Health, Delaware Health Statistics Center

Figure 5. Resident Population by County, Delaware, 2000-2019



Source: Delaware Department of Health and Social Services, Division of Public Health, Delaware Health Statistics Center

TABLE A-1. PERCENT CHANGE IN POPULATION BY SEX, COUNTY, CITY OF DOVER, CITY OF NEWARK, AND CITY OF WILMINGTON, DELAWARE, 1970-2020

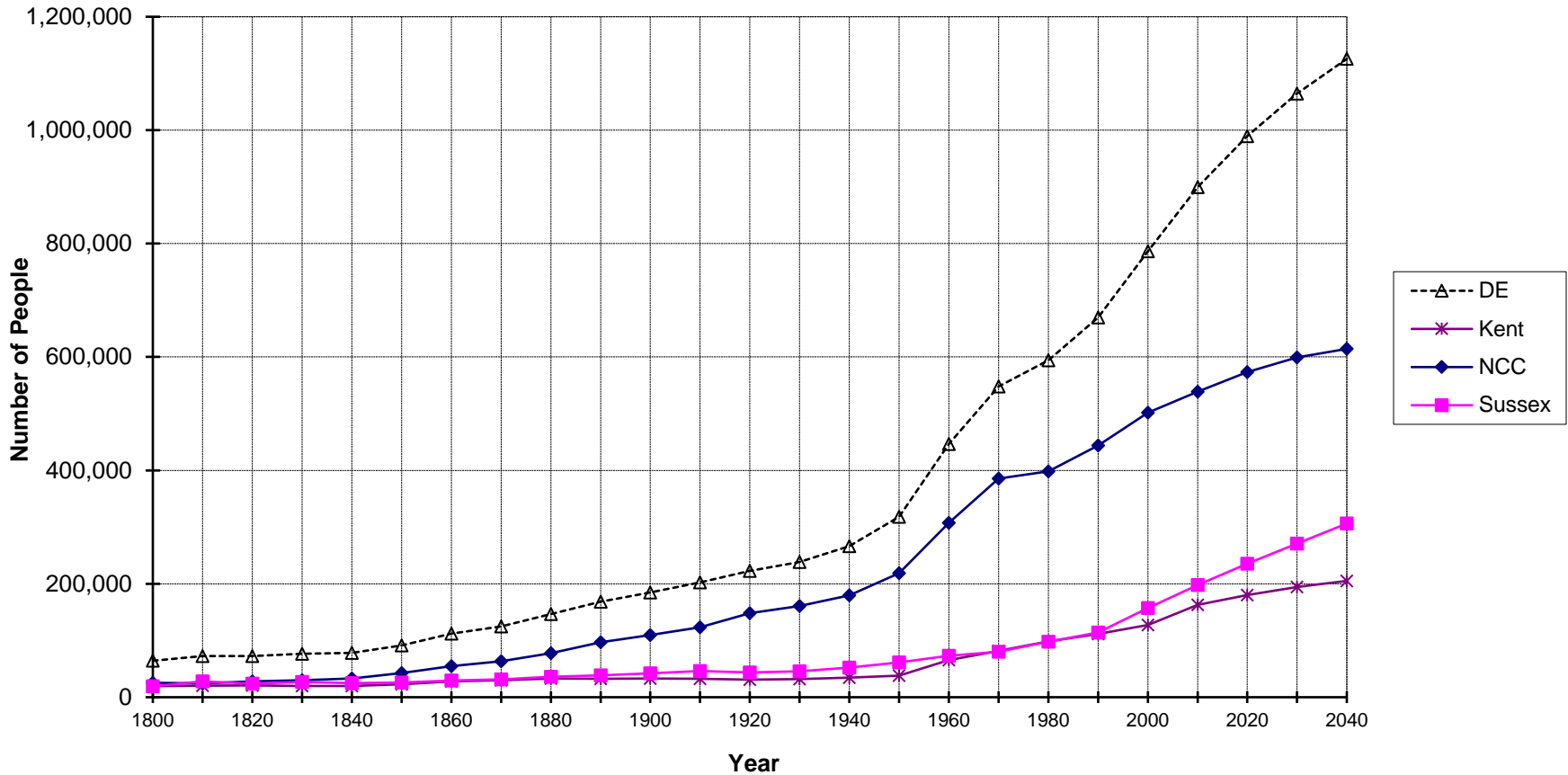
Area/ Sex	1970	1980	% Change 1970-1980	1990	% Change 1980-1990	2000	% Change 1990-2000	2010	% Change 2000-2010	2020*	% Change 2010-2020	% Change 2000-2020
Delaware	548,104	594,338	8.4	666,168	12.1	786,393	18.0	900,459	14.5	977,780	8.6	24.3
Male	267,332	286,599	7.2	322,966	12.7	381,690	18.2	436,093	14.3	473,822	8.7	24.1
Female	280,772	307,739	9.6	343,202	11.5	404,703	17.9	464,366	14.7	503,958	8.5	24.5
Kent	81,892	98,219	19.9	110,993	13.0	127,230	14.6	162,847	28.0	178,650	9.7	40.4
Male	41,337	48,254	16.7	54,300	12.5	61,325	12.9	78,339	27.7	85,476	9.1	39.4
Female	40,555	49,965	23.2	56,693	13.5	65,905	16.2	84,508	28.2	93,174	10.3	41.4
Dover	17,488	23,512	34.4	27,630	17.5	32,135	16.3	35,897	11.7	38,597	7.5	20.1
Male	8,319	11,695	40.6	13,408	14.6	15,114	12.7	16,668	10.3	17,937	7.6	18.7
Female	9,169	11,817	28.9	14,222	20.4	17,021	19.7	19,229	13.0	20,659	7.4	21.4
New Castle	385,856	398,115	3.2	441,946	11.0	501,846	13.6	539,642	7.5	564,780	4.7	12.5
Male	187,124	191,176	2.2	213,869	11.9	243,587	13.9	261,055	7.2	274,276	5.1	12.6
Female	198,732	206,939	4.1	228,077	10.2	258,259	13.2	278,587	7.9	290,504	4.3	12.5
Newark	20,757	25,247	21.6	26,463	4.8	28,457	7.5	31,490	10.7	34,196	8.6	20.2
Male	10,242	11,993	17.1	12,408	3.5	13,085	5.5	14,699	12.3	16,003	8.9	22.3
Female	10,515	13,254	26.0	14,055	6.0	15,372	9.4	16,791	9.2	18,192	8.3	18.3
Wilmington	80,386	70,195	-12.7	71,529	1.9	72,730	1.7	71,455	-1.8	71,818	0.5	-1.3
Male	36,968	31,458	-14.9	33,249	5.7	34,759	4.5	33,998	-2.2	34,293	0.9	-1.3
Female	43,418	38,737	-10.8	38,280	-1.2	37,971	-0.8	37,457	-1.4	37,525	0.2	-1.2
Sussex	80,356	98,004	22.0	113,229	15.5	157,317	38.9	197,970	25.8	234,350	18.4	49.0
Male	38,871	47,169	21.3	54,797	16.2	76,778	40.1	96,699	25.9	114,070	18.0	48.6
Female	41,485	50,835	22.5	58,432	14.9	80,539	37.8	101,271	25.7	120,280	18.8	49.3

Note:

*Numbers for this year are projections.

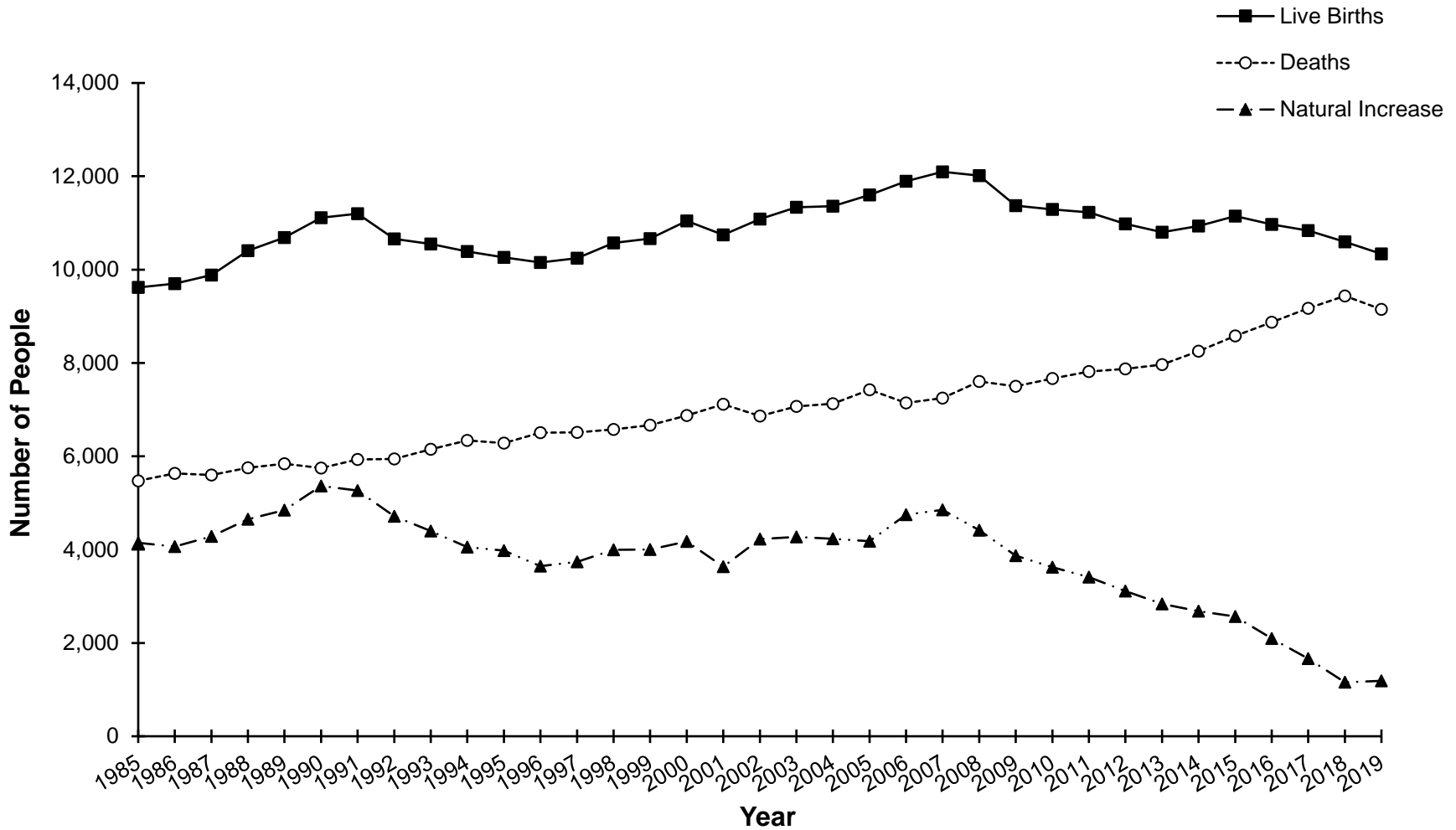
Sources: Delaware Department of Health and Social Services, Division of Public Health, Delaware Health Statistics Center, Delaware Population Consortium
U.S. Bureau of the Census

Figure A-1. Population Growth, Delaware and Counties, 1800-2040



Sources: Delaware Department of Health and Social Services, Division of Public Health, Delaware Health Statistics Center
 Delaware Population Consortium

Figure A-2. Live Births, Deaths, and Natural Increase, Delaware, 1985-2019



Source: Delaware Department of Health and Social Services, Division of Public Health, Delaware Health Statistics Center

TABLE A-2. POPULATION ESTIMATES BY SEX, RACE AND AGE, COUNTY, CITY OF DOVER, CITY OF NEWARK, AND CITY OF WILMINGTON, DELAWARE, 2019

Area/ Sex/Race	Age																		
	Total	0-4	5-9	10-14	15-19	20-24	25-29	30-34	35-39	40-44	45-49	50-54	55-59	60-64	65-69	70-74	75-79	80-84	85+
Delaware	972,332	54,554	56,583	59,373	58,872	59,254	69,524	62,068	60,679	53,896	58,586	64,831	69,122	65,307	56,439	46,977	32,735	21,258	22,274
Male	471,239	27,551	28,753	30,075	30,019	30,193	34,663	31,448	30,104	26,161	28,349	31,241	33,113	30,857	26,130	21,373	14,367	8,998	7,844
Non-Hispanic White	291,152	14,802	14,619	14,570	15,320	16,254	19,461	18,066	17,086	14,860	17,044	20,448	23,254	22,803	20,044	17,174	11,591	7,255	6,501
Non-Hispanic Black	100,618	7,276	7,502	7,189	7,537	7,916	8,912	7,055	6,302	5,423	6,083	6,659	6,395	5,387	4,177	2,929	1,880	1,133	863
Female	501,093	27,003	27,830	29,298	29,298	28,853	29,061	34,861	30,620	30,575	27,735	30,237	33,590	36,009	34,450	30,309	25,604	18,368	12,260
Non-Hispanic White	310,903	14,517	14,101	13,923	14,523	15,584	20,148	17,634	17,289	15,717	17,972	21,279	24,762	24,854	22,670	19,917	14,522	9,768	11,723
Non-Hispanic Black	111,813	7,156	7,266	7,050	7,329	7,705	8,723	7,283	7,080	6,403	7,214	8,092	7,809	6,758	5,538	4,024	2,681	1,724	1,978
Kent	178,019	11,003	11,296	11,864	11,952	11,599	13,665	12,018	10,845	9,740	10,484	11,534	11,849	10,705	8,989	7,813	5,570	3,700	3,393
Male	85,212	5,502	5,695	5,978	6,053	5,961	6,747	6,050	5,179	4,469	4,934	5,471	5,664	4,933	4,072	3,500	2,382	1,487	1,135
Non-Hispanic White	54,152	3,388	3,300	3,257	3,405	3,395	3,546	3,695	3,333	2,903	3,285	3,714	3,950	3,541	2,951	2,662	1,831	1,114	882
Non-Hispanic Black	20,003	1,405	1,473	1,457	1,512	1,545	2,272	1,483	1,065	900	1,089	1,228	1,222	1,006	826	640	421	270	189
Female	92,807	5,501	5,601	5,886	5,899	5,638	6,918	5,968	5,666	5,271	5,550	6,063	6,185	5,772	4,917	4,313	3,188	2,213	2,258
Non-Hispanic White	57,468	3,390	3,258	3,021	3,177	3,071	3,345	3,595	3,510	3,256	3,478	3,933	4,232	3,945	3,440	3,154	2,321	1,664	1,678
Non-Hispanic Black	22,515	1,413	1,417	1,473	1,461	1,521	2,569	1,531	1,312	1,179	1,321	1,427	1,346	1,282	1,084	814	583	382	400
New Castle	562,694	31,979	33,137	34,802	34,974	35,821	44,307	37,883	37,610	33,206	35,667	38,369	39,526	36,364	30,077	22,804	15,037	9,837	11,294
Male	273,276	16,176	16,875	17,596	17,894	18,365	21,937	19,200	18,689	16,313	17,326	18,489	18,877	17,238	13,880	10,234	6,402	4,010	3,775
Non-Hispanic White	154,496	7,954	7,936	7,806	8,403	9,098	12,084	10,506	9,767	8,429	9,505	11,049	12,234	11,819	9,857	7,518	4,663	2,939	2,929
Non-Hispanic Black	67,540	4,777	4,981	4,739	5,075	5,420	5,647	4,675	4,416	3,776	4,304	4,603	4,350	3,619	2,760	1,891	1,166	706	535
Female	289,418	15,803	16,262	17,206	17,080	17,456	22,370	18,683	18,921	16,893	18,341	19,880	20,649	19,126	16,197	12,570	8,635	5,827	7,519
Non-Hispanic White	164,706	7,771	7,554	7,647	7,982	8,762	13,078	10,131	9,841	8,666	9,826	11,434	12,995	12,678	11,122	8,867	6,253	4,243	5,856
Non-Hispanic Black	75,373	4,680	4,864	4,629	4,952	5,209	5,256	4,863	4,925	4,512	5,139	5,722	5,447	4,645	3,728	2,672	1,710	1,135	1,285
Wilmington*	71,670	5,056	5,215	4,742	4,441	4,168	4,571	5,095	6,125	4,829	4,405	4,299	4,601	4,209	3,394	2,459	1,652	1,117	1,292
Male	34,204	2,522	2,580	2,372	2,264	2,090	2,324	2,521	2,955	2,386	2,134	2,013	2,145	1,950	1,544	1,038	631	396	339
Non-Hispanic White	10,006	421	508	383	289	266	304	807	1,259	1,013	806	712	719	726	643	499	313	166	172
Non-Hispanic Black	19,227	1,593	1,561	1,519	1,536	1,498	1,666	1,357	1,226	1,051	1,053	1,063	1,227	1,066	769	453	271	191	127
Female	37,466	2,534	2,635	2,370	2,177	2,078	2,247	2,574	3,170	2,443	2,271	2,286	2,456	2,259	1,850	1,421	1,021	721	953
Non-Hispanic White	10,054	424	517	378	298	272	285	800	1,226	808	689	570	661	677	674	595	421	272	487
Non-Hispanic Black	22,460	1,612	1,615	1,533	1,468	1,472	1,647	1,421	1,512	1,291	1,319	1,458	1,594	1,405	1,047	737	531	394	404
Sussex	231,619	11,572	12,150	12,707	11,946	11,834	11,552	12,167	12,224	10,950	12,435	14,928	17,747	18,238	17,373	16,360	12,128	7,721	7,587
Male	112,751	5,873	6,183	6,501	6,072	5,867	5,979	6,198	6,236	5,379	6,089	7,281	8,572	8,686	8,178	7,936	7,806	8,403	9,098
Non-Hispanic White	82,504	3,460	3,383	3,507	3,512	3,761	3,831	3,865	3,986	3,528	4,254	5,685	7,070	7,443	7,236	6,994	5,097	3,202	2,690
Non-Hispanic Black	13,075	1,094	1,048	993	950	951	993	897	821	647	690	828	823	762	591	398	293	157	139
Female	118,868	5,699	5,967	6,206	5,874	5,967	5,573	5,969	5,988	5,571	6,346	7,647	9,175	9,552	9,195	8,721	6,545	4,220	4,653
Non-Hispanic White	88,729	3,356	3,289	3,255	3,364	3,751	3,725	3,908	3,938	3,795	4,668	5,912	7,535	8,231	8,108	7,896	5,948	3,861	4,189
Non-Hispanic Black	13,925	1,063	985	948	916	975	898	889	843	712	754	943	1,016	831	726	538	388	207	293

Sources:

Delaware Department of Health and Social Services, Division of Public Health, Delaware Health Statistics Center
Delaware Population Consortium