

DELAWARE VITAL STATISTICS ANNUAL REPORT POPULATION, 2021

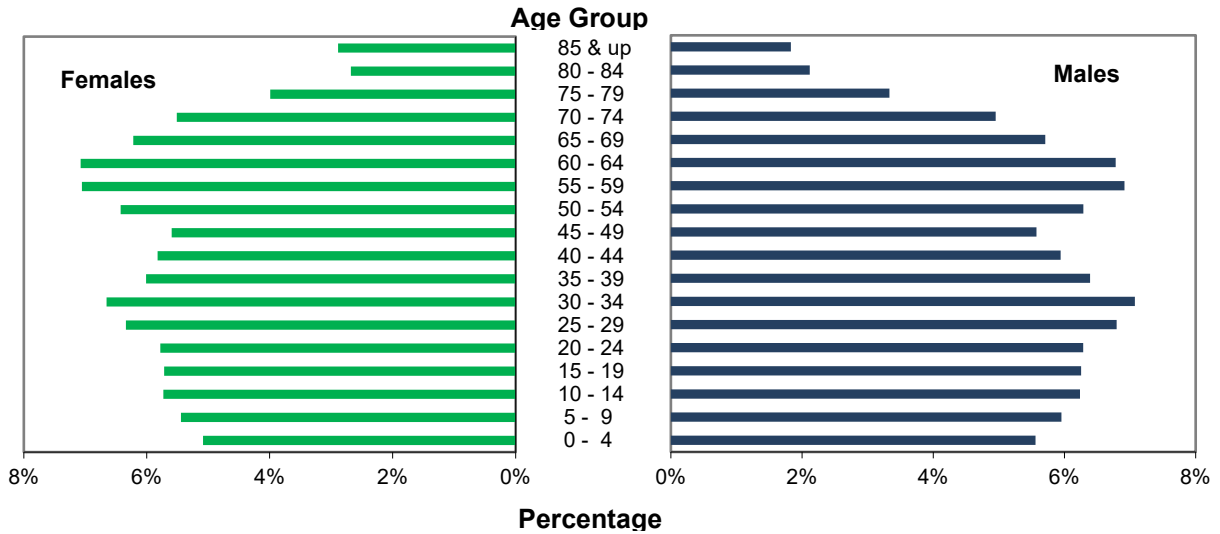


Suggested Citation:

Delaware Health Statistics Center. *Delaware Vital Statistics Annual Report, 2021*.
Delaware Department of Health and Social Services, Division of Public Health: 2024

In 2021, nearly 51% percent of Delaware’s population was female. Females made up a greater proportion of the older age groups, which reflects the longer female life expectancy. Delaware females born in 2021 can expect to live an average of 80.9 years versus males who can expect to live 74.3 years.

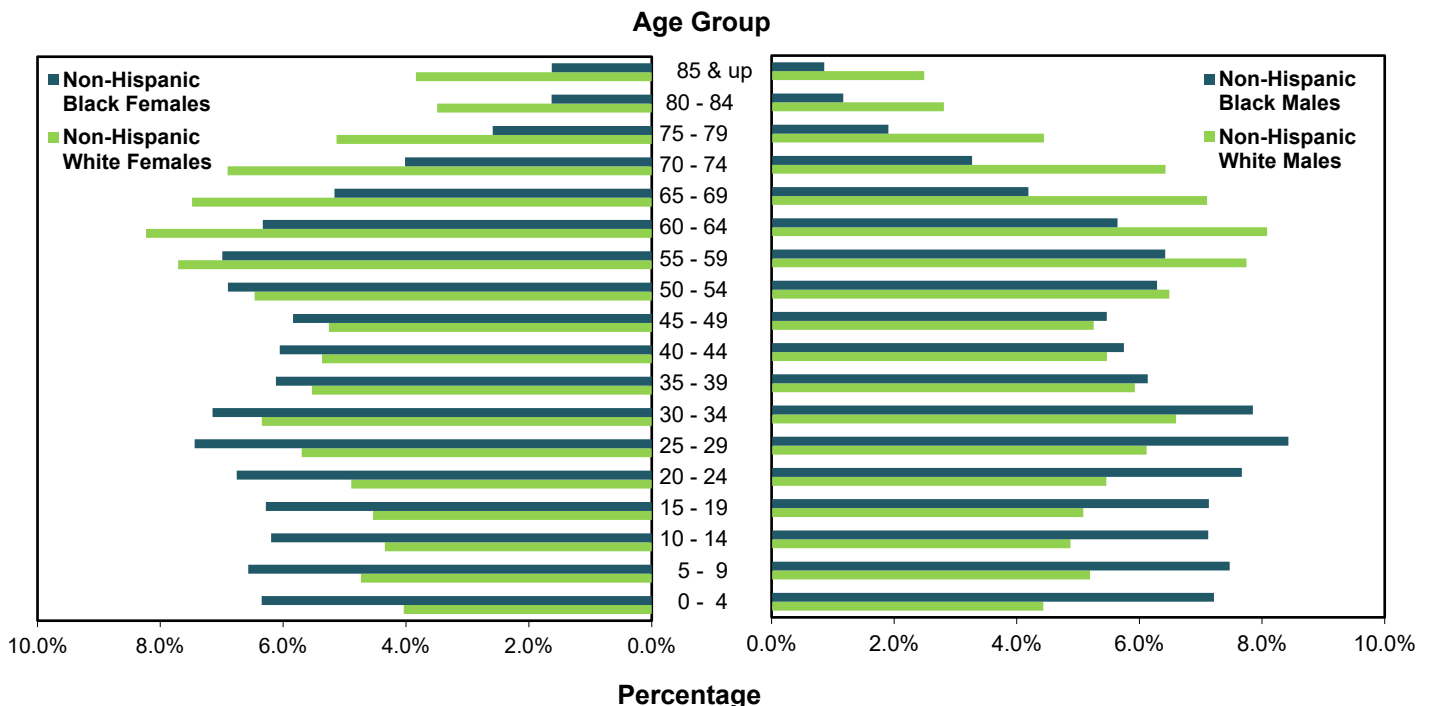
Figure 3. Population by Gender, Delaware, 2021



Source: Delaware Department of Social Services, Division of Public Health, Delaware Health Statistic Center

When the population was broken down by race, the highest proportion of females in the older age groups appeared in the non-Hispanic white population. However, non-Hispanic black females had a greater percentage of their population in the 0-54 year age range than non-Hispanic white females. In the 55 and above age range for both males and females, a greater proportion of the population was non-Hispanic white.

Figure 4. Non-Hispanic Population by Gender and Race, Delaware, 2021



Source: Delaware Department of Social Services, Division of Public Health, Delaware Health Statistic Center

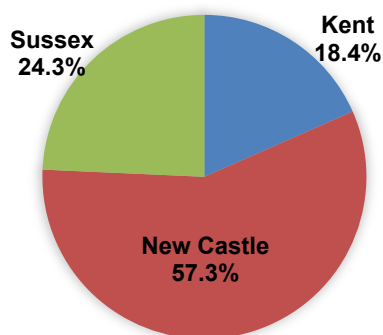
POPULATION

Delaware's three counties continued their increasing population trend, although they grew at different rates. Between 2000 and 2021, county populations grew annually by 2.1 percent for Kent, 0.7 percent for New Castle, and 2.6 percent for Sussex. Delaware's statewide increase was 1.3 percent.

In 2021, nearly half of Delaware's 65 and older population resided in New Castle County. However, residents 65 and older represented a much larger proportion of the Sussex County population, where one in four residents was 65 or older, versus New Castle and Kent counties, where approximately one in six residents was 65 or older.

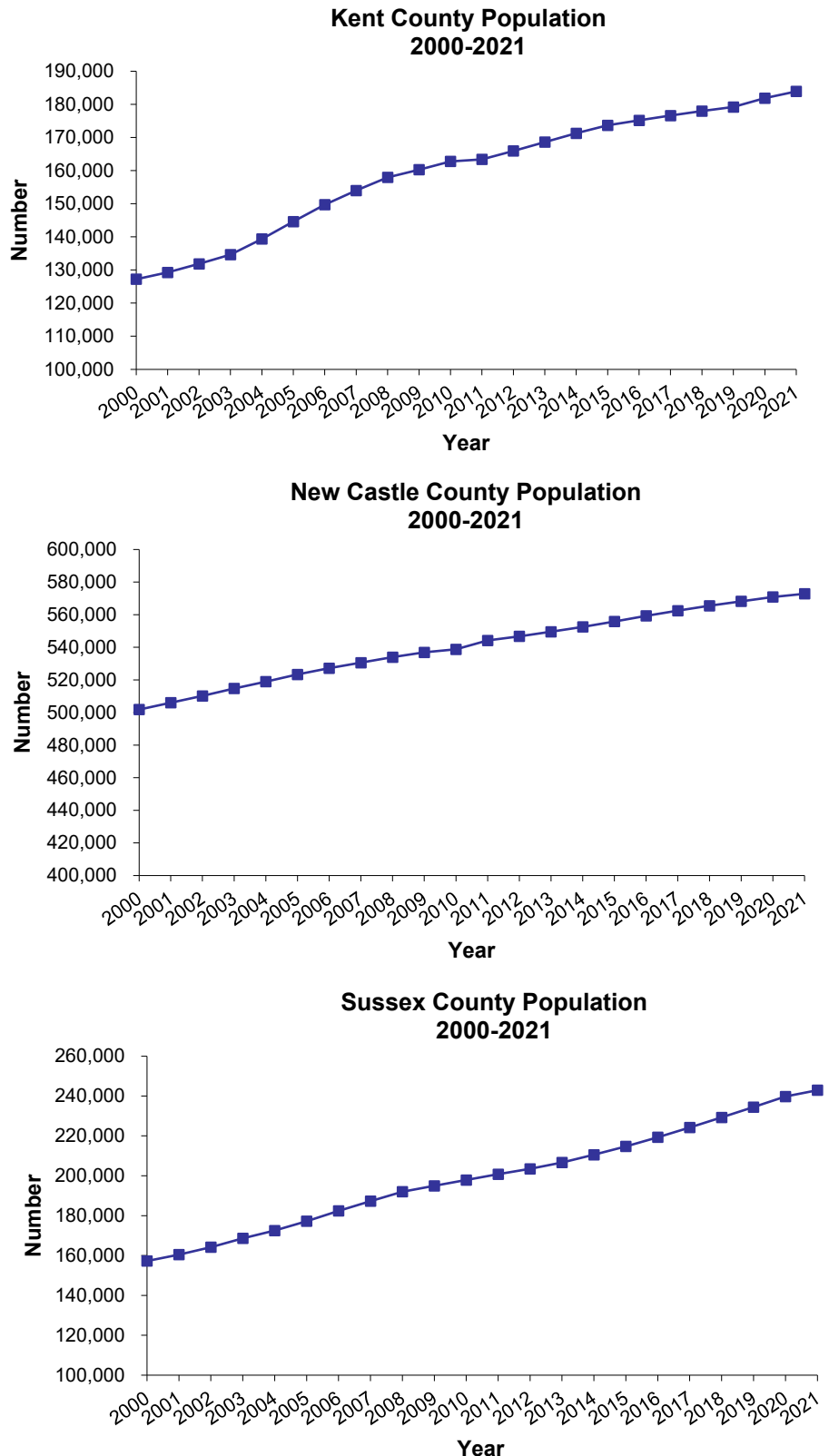
Over half of Delaware's total population resides in New Castle County, 57%.

Figure 6. Percent of Population by County, Delaware, 2021



Source: Delaware Department of Health and Social Services, Division of Public Health, Delaware Health Statistics Center

Figure 5. Resident Population by County, Delaware, 2000-2021



Source: Delaware Department of Health and Social Services, Division of Public Health, Delaware Health Statistics Center

TABLE A-1. PERCENT CHANGE IN POPULATION BY SEX, COUNTY, CITY OF DOVER, CITY OF NEWARK, AND CITY OF WILMINGTON, DELAWARE, 1970-2020

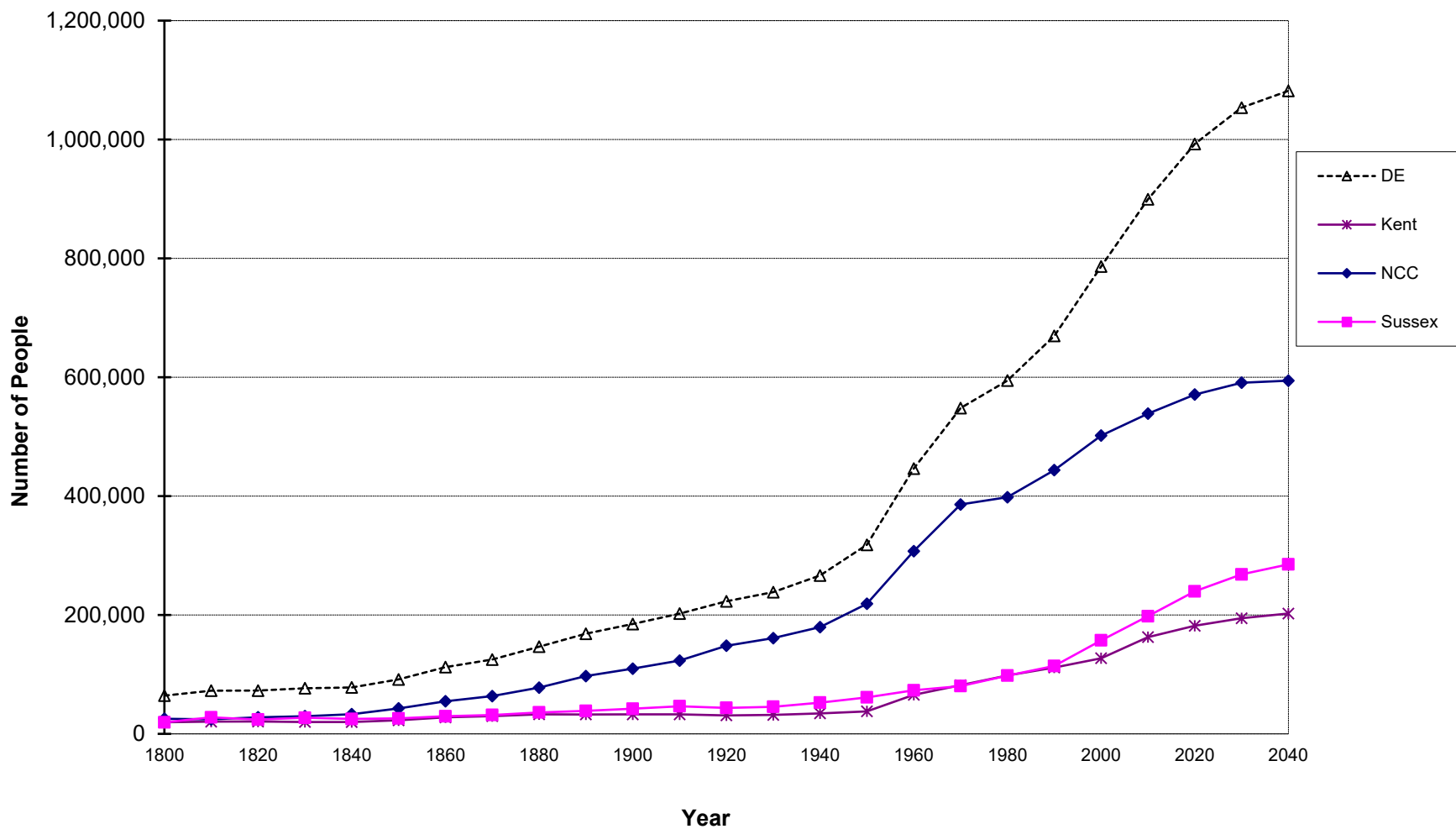
Area/ Sex	1970	1980	% Change 1970-1980	1990	% Change 1980-1990	2000	% Change 1990-2000	2010	% Change 2000-2010	2020*	% Change 2010-2020	% Change 2000-2020
Delaware	548,104	594,338	8.4	666,168	12.1	786,393	18.0	899,381	14.4	992,508	10.4	26.2
Male	267,332	286,599	7.2	322,966	12.7	381,690	18.2	435,584	14.1	480,707	10.4	25.9
Female	280,772	307,739	9.6	343,202	11.5	404,703	17.9	463,797	14.6	511,801	10.4	26.5
Kent	81,892	98,219	19.9	110,993	13.0	127,230	14.6	162,763	27.9	181,858	11.7	42.9
Male	41,337	48,254	16.7	54,300	12.5	61,325	12.9	78,307	27.7	86,159	10.0	40.5
Female	40,555	49,965	23.2	56,693	13.5	65,905	16.2	84,456	28.1	95,699	13.3	45.2
Dover	17,488	23,512	34.4	27,630	17.5	32,135	16.3	35,894	11.7	39,554	10.2	23.1
Male	8,319	11,695	40.6	13,408	14.6	15,114	12.7	16,667	10.3	18,382	10.3	21.6
Female	9,169	11,817	28.9	14,222	20.4	17,021	19.7	19,227	13.0	21,171	10.1	24.4
New Castle	385,856	398,115	3.2	441,946	11.0	501,846	13.6	538,753	7.4	570,888	6.0	13.8
Male	187,124	191,176	2.2	213,869	11.9	243,587	13.9	260,629	7.0	277,725	6.6	14.0
Female	198,732	206,939	4.1	228,077	10.2	258,259	13.2	278,124	7.7	293,163	5.4	13.5
Newark	20,757	25,247	21.6	26,463	4.8	28,457	7.5	31,468	10.6	31,296	-0.5	10.0
Male	10,242	11,993	17.1	12,408	3.5	13,085	5.5	14,689	12.3	14,646	-0.3	11.9
Female	10,515	13,254	26.0	14,055	6.0	15,372	9.4	16,779	9.2	16,649	-0.8	8.3
Wilmington	80,386	70,195	-12.7	71,529	1.9	72,730	1.7	71,454	-1.8	70,905	-0.8	-2.5
Male	36,968	31,458	-14.9	33,249	5.7	34,759	4.5	33,997	-2.2	33,912	-0.3	-2.4
Female	43,418	38,737	-10.8	38,280	-1.2	37,971	-0.8	37,457	-1.4	36,993	-1.2	-2.6
Sussex	80,356	98,004	22.0	113,229	15.5	157,317	38.9	197,865	25.8	239,762	21.2	52.4
Male	38,871	47,169	21.3	54,797	16.2	76,778	40.1	96,648	25.9	116,823	20.9	52.2
Female	41,485	50,835	22.5	58,432	14.9	80,539	37.8	101,217	25.7	122,939	21.5	52.6

Note:

*Numbers for this year are projections.

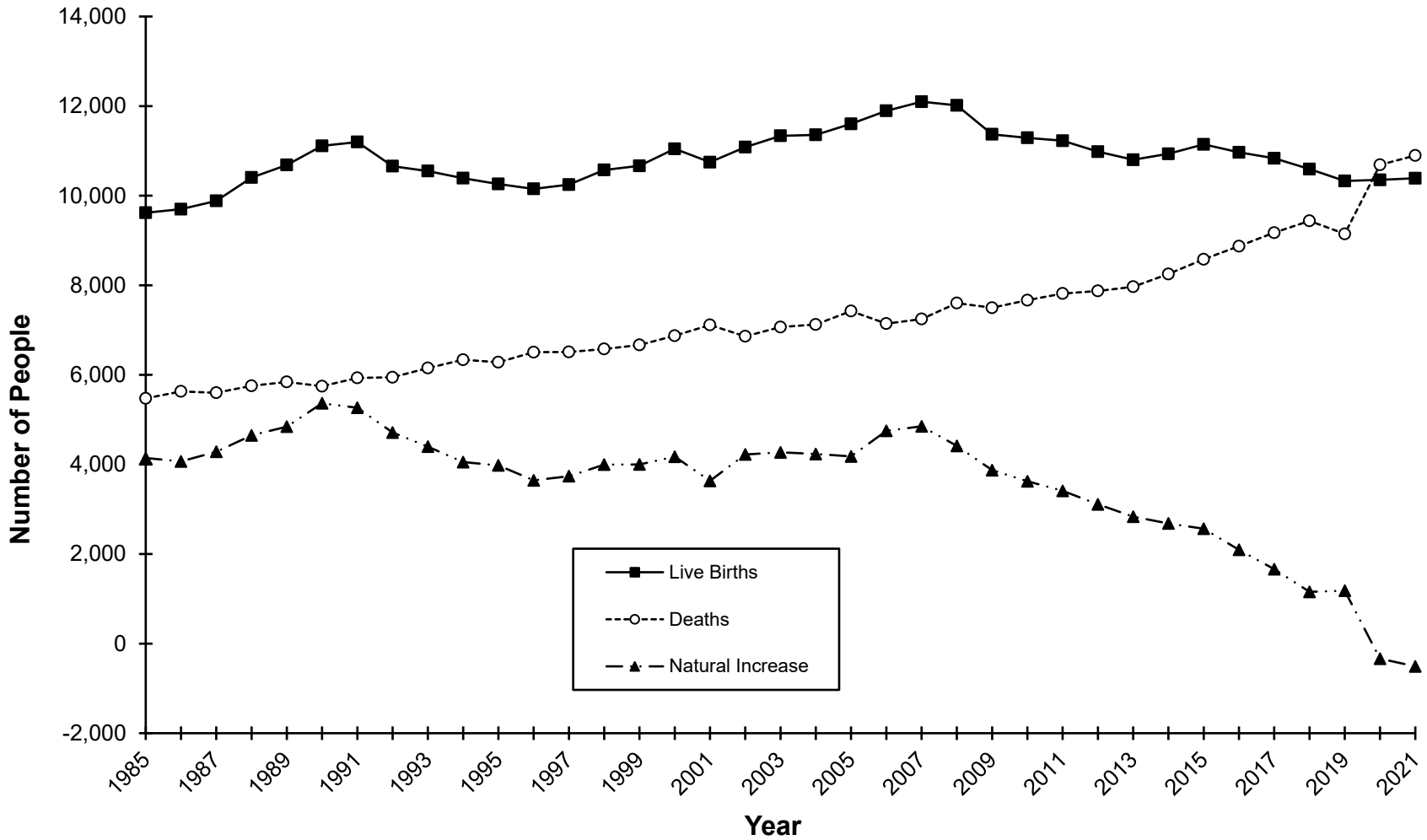
Sources: Delaware Department of Health and Social Services, Division of Public Health, Delaware Health Statistics Center, Delaware Population Consortium
U.S. Bureau of the Census

Figure A-1. Population Growth, Delaware and Counties, 1800-2040



Sources: Delaware Department of Health and Social Services, Division of Public Health, Delaware Health Statistics Center
 Delaware Population Consortium

Figure A-2. Live Births, Deaths, and Natural Increase, Delaware, 1985-2021



Source: Delaware Department of Health and Social Services, Division of Public Health, Delaware Health Statistics Center

TABLE A-2. POPULATION ESTIMATES BY SEX, RACE AND AGE, COUNTY, CITY OF DOVER, CITY OF NEWARK, AND CITY OF WILMINGTON, DELAWARE, 2021

Area/ Sex/Race	Age																		
	Total	0-4	5-9	10-14	15-19	20-24	25-29	30-34	35-39	40-44	45-49	50-54	55-59	60-64	65-69	70-74	75-79	80-84	85+
Delaware	999,674	53,127	56,892	59,738	59,750	60,224	65,572	68,539	61,933	58,786	55,818	63,560	69,844	69,300	59,689	52,389	36,703	24,065	23,745
Male	484,122	26,914	28,830	30,204	30,280	30,429	32,905	34,243	30,945	28,767	26,983	30,448	33,480	32,833	27,634	23,981	16,134	10,257	8,855
Non-Hispanic White	299,199	13,258	15,540	14,586	15,211	16,341	18,302	19,738	17,726	16,367	15,720	19,415	23,174	24,185	21,256	19,224	13,289	8,413	7,454
Non-Hispanic Black	99,740	7,197	7,454	7,105	7,115	7,651	8,408	7,831	6,120	5,733	5,454	6,270	6,404	5,628	4,179	3,263	1,901	1,168	859
Female	515,552	26,213	28,062	29,534	29,470	29,795	32,667	34,296	30,988	30,019	28,835	33,112	36,364	36,467	32,055	28,408	20,569	13,808	14,890
Non-Hispanic White	319,020	12,874	15,104	13,855	14,476	15,601	18,178	20,246	17,649	17,124	16,769	20,625	24,595	26,268	23,875	22,027	16,368	11,143	12,243
Non-Hispanic Black	110,752	7,031	7,274	6,862	6,958	7,483	8,241	7,918	6,775	6,705	6,467	7,641	7,741	7,011	5,721	4,448	2,868	1,805	1,803
Kent	183,890	10,812	11,606	11,701	12,018	12,001	12,629	13,712	11,466	10,647	10,213	11,259	12,101	11,456	9,563	8,547	6,334	4,099	3,726
Male	87,113	5,466	5,868	5,799	5,888	5,964	6,222	6,790	5,524	4,923	4,727	5,322	5,626	5,335	4,237	3,806	2,704	1,626	1,286
Non-Hispanic White	56,999	3,050	3,593	3,328	3,556	3,641	3,555	3,987	3,594	3,310	3,096	3,688	4,028	3,913	3,178	2,958	2,194	1,275	1,055
Non-Hispanic Black	20,621	1,613	1,508	1,507	1,468	1,613	1,961	1,962	1,183	900	1,021	1,165	1,228	1,093	834	689	422	271	183
Female	96,777	5,346	5,738	5,902	6,130	6,037	6,407	6,922	5,942	5,724	5,486	5,937	6,475	6,121	5,326	4,741	3,630	2,473	2,440
Non-Hispanic White	60,252	2,959	3,495	3,159	3,291	3,348	3,248	3,842	3,746	3,617	3,453	3,795	4,421	4,274	3,727	3,449	2,698	1,870	1,860
Non-Hispanic Black	23,237	1,593	1,483	1,383	1,542	1,540	2,102	2,169	1,323	1,277	1,238	1,412	1,404	1,282	1,165	901	627	415	381
New Castle	572,867	30,929	33,124	34,767	35,334	36,175	40,473	42,611	37,761	36,134	33,677	37,729	39,489	38,228	32,055	26,076	16,667	10,627	11,011
Male	278,686	15,675	16,773	17,638	18,070	18,453	20,369	21,216	18,980	17,801	16,526	18,105	18,977	18,105	14,820	11,865	7,134	4,398	3,781
Non-Hispanic White	155,801	6,960	8,336	7,718	8,180	8,995	10,636	11,789	10,109	9,116	8,736	10,433	11,884	12,238	10,563	8,693	5,288	3,251	2,876
Non-Hispanic Black	66,004	4,615	4,919	4,604	4,682	5,096	5,453	4,926	4,118	4,090	3,810	4,340	4,327	3,748	2,704	2,124	1,187	712	549
Female	294,181	15,254	16,351	17,129	17,264	17,722	20,104	21,395	18,781	18,333	17,151	19,624	20,512	20,123	17,235	14,211	9,533	6,229	7,230
Non-Hispanic White	165,914	6,771	8,133	7,359	7,869	8,595	10,874	12,422	9,781	9,480	8,846	11,007	12,504	13,291	11,803	10,043	6,931	4,582	5,623
Non-Hispanic Black	73,547	4,481	4,791	4,510	4,492	5,022	5,184	4,845	4,608	4,656	4,549	5,339	5,393	4,774	3,817	2,956	1,827	1,140	1,163
Wilmington*	70,761	4,878	5,235	4,946	4,469	4,168	4,357	4,512	5,796	5,407	4,190	4,242	4,315	4,140	3,421	2,660	1,668	1,090	1,267
Male	33,861	2,435	2,611	2,472	2,260	2,098	2,178	2,311	2,807	2,612	2,048	2,012	2,022	1,895	1,555	1,154	644	404	343
Non-Hispanic White	9,422	343	469	440	293	242	276	477	1,178	1,048	806	701	674	674	635	506	330	179	151
Non-Hispanic Black	17,795	1,446	1,460	1,422	1,363	1,373	1,473	1,391	1,069	1,066	876	987	1,069	1,019	731	510	248	164	128
Female	36,900	2,443	2,624	2,474	2,209	2,070	2,179	2,201	2,989	2,795	2,142	2,230	2,293	2,245	1,866	1,506	1,024	686	924
Non-Hispanic White	9,437	344	471	426	309	266	259	462	1,101	986	662	580	582	642	631	597	433	264	422
Non-Hispanic Black	20,759	1,465	1,482	1,427	1,343	1,335	1,495	1,346	1,341	1,281	1,106	1,307	1,431	1,353	1,040	764	495	347	401
Sussex	242,917	11,386	12,162	13,270	12,398	12,048	12,470	12,216	12,706	12,005	11,928	14,572	18,254	19,616	18,071	17,766	13,702	9,339	9,008
Male	118,323	5,773	6,189	6,767	6,322	6,012	6,314	6,237	6,441	6,043	5,730	7,021	8,877	9,393	8,577	8,310	6,296	4,233	3,788
Non-Hispanic White	86,399	3,248	3,611	3,540	3,475	3,705	4,111	3,962	4,023	3,941	3,888	5,294	7,262	8,034	7,515	7,573	5,807	3,887	3,523
Non-Hispanic Black	13,115	969	1,027	994	965	942	994	943	819	743	623	765	849	787	641	450	292	185	127
Female	124,594	5,613	5,973	6,503	6,076	6,036	6,156	5,979	6,265	5,962	6,198	7,551	9,377	10,223	9,494	9,456	7,406	5,106	5,220
Non-Hispanic White	92,854	3,144	3,476	3,337	3,316	3,658	4,056	3,982	4,122	4,027	4,470	5,823	7,670	8,703	8,345	8,535	6,739	4,691	4,760
Non-Hispanic Black	13,968	957	1,000	969	924	921	955	904	844	772	680	890	944	955	739	591	414	250	259

Sources:

Delaware Department of Health and Social Services, Division of Public Health, Delaware Health Statistics Center

Delaware Population Consortium