

# UPDATES

Delaware Institute for Medical Education and Research (DIMER)

Dr. Nancy Fan  
DHCC Chair and Acting DIMER Chair



ChooseHealth  
DELAWARE

# DELAWARE INSTITUTE FOR MEDICAL EDUCATION AND RESEARCH (DIMER)

- DIMER Board met on September 27, 2023
- Meeting agenda –
  - Delaware Health Sciences Alliance
  - DIMER school updates
  - Residency updates
  - DHCC Strategic Retreat
  - Sussex County Update/Recommendation for Medical School
  - Legislative Changes Workgroup
- Next DIMER board meeting January 17, 2024 (4pm - 6pm)



# DIMER SCHOOL UPDATES

## Philadelphia College of Osteopathic Medicine (PCOM)

- 13 Delaware students class of 2027: 6 women, 7 male
- PCOM received 67 applications from potential DIMER candidates. The DO Faculty Committee on Admissions invited 41 applicants to interview virtually; 41 applicants were interviewed and the Faculty Committee on Admissions accepted 33 of those individuals, 13 students confirmed their places in the class with 1 defer to 24-25.

## Demographics

RACE	
American Indian/Alaskan Native, Black or African-American	1
Asian, Asian Indian	2
Asian, Chinese	1
Asian, Southeast Asian-not Vietnamese	1
Black or African American	2
Black or African-American, White	1
White	5

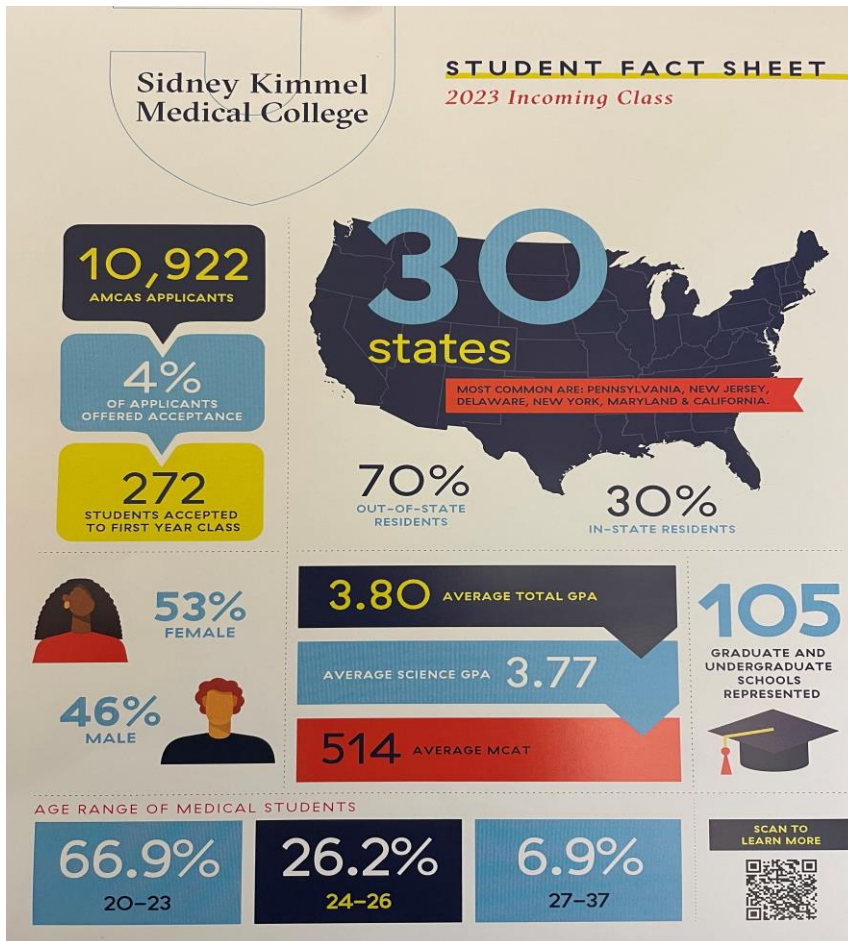
COUNTIES	
KENT	4
NEW CASTLE	7
SUSSEX	2



# DIMER SCHOOL UPDATES

## Sidney Kimmel Medical College (SKMC)

- 20 Delaware students class of 2027:
  - 10 men and 10 women
  - 18 New Castle County, 1 Sussex, 1 Kent
- Total applications – 10,922
- DIMER applications – 65
  - 31 invited to interview
  - 25 accepts
  - 5 offers declined



# PROPOSED DIMER BOARD COMPOSITION

## Chair and Vice-Chair

- DIMER Chair will be elected from the board by the board. Chair will serve a 3-year term, no more than 3 terms and non-consecutive.
- DIMER Vice Chair nominated in the same fashion as Chair and with the same term limit rules. This will allow for a successor to Chair.
- A nominating committee will be established for both Chair and Vice Chair position

## Board (17 members)

- 6 - All stated institutions with graduate medical education programs
- 2 - University of Delaware
- 1 - Delaware State University
- 1 - Department of Education
- 1 - Division of Public Health (ex-office)
- 1 - Delaware Health Care Commission commissioner
- 1 - Medical Society of Delaware
- 1 - Delaware Healthcare Association
- 2 - ChristianaCare representatives
- 1 - At large, not affiliate or representing an institution



*\*Eliminating all current at large county/City of Wilmington positions*

# RESIDENCY UPDATES - BAYHEALTH

## Graduate Medical Education Programs at Bayhealth as of July 1, 2023

Academic Year	21 -22	22-23	23-24	24-25	25-26	26-27
Internal Medicine	13	26	39	39	39	39
Family Medicine	7	14	22	24	24	24
General Surgery	-	3	6	9	12	15
Emergency Medicine	-	-	6	12	18	18
Hematology and Medical Oncology Fellowship	-	-	-	2	4	6
<i>Total</i>	20	43	73	86	97	102

### Undergraduate Medical Education

Total for 2022-2023:

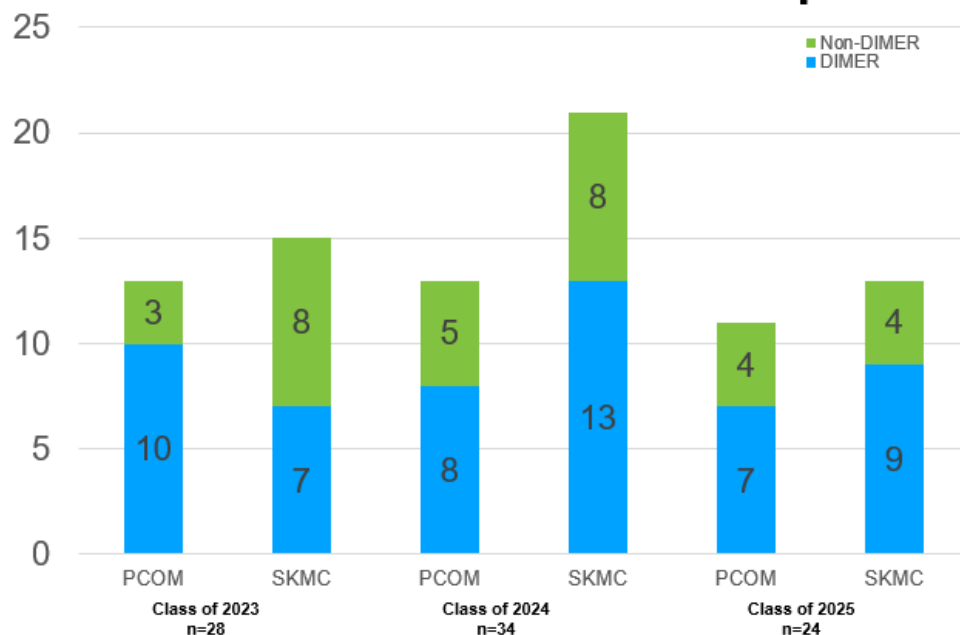
- PCOM 3<sup>rd</sup> Year Rotations: 110
- PCOM 4<sup>th</sup> Year Rotations: 63
- Jefferson Rotations: 13
- Arcadia Rotations: 44
- Drexel Rotations: 9
- Audition Rotations: 36

### Program Updates

- Hematology and Medical Oncology Fellowship program was accredited and the first class fellows will start on July 1, 2024
- Other fellowship and residency programs are being discussed
- PCOM Simulation Center at Bayhealth has received initial accreditation

# RESIDENCY UPDATES - CHRISTIANACARE

## Current Delaware Branch Campus



## Affiliate Match 2023

Below are the results of the match and counts as it relates to DIMER, Affiliates and Branch Campus students.

### Total Affiliate Match Results:

# of PCOM Students: 10

# of SKMC Students: 6

### Branch Campus:

# of PCOM Branch: 3 (FM, IM, Med/Peds)

# of SKMC Branch: 1 (EM)

### DIMER Numbers:

PCOM – 4 (EM/FM, FM, Med/Peds, Psych)

SKMC – 1 (EM)

# RESIDENCY UPDATES – ST. FRANCIS

- 1/3 of residents are bilingual in Spanish
- 2 out of 6 residents stayed on at St. Francis
- Added another faculty member and community family physician
- Trying to bring a population health curriculum to the residency program which will help promote an interest in Family Medicine
- New Epic transition is done and office renovation for Family Medicine has been completed.





# RESIDENCY UPDATES - NEMOURS

- Residents came from Utah, Boston, and local area.
- 4 residents from Sidney Kimmel Medical College and 3 residents from Philadelphia College of Osteopathic Medicine
- Getting ready to start a new year of recruitment and have an Underrepresented in Medicine Scholars program.

