

Primary Care at Christiana Care Health System

Christine Donohue-Henry, MD
November 7, 2018



CHRISTIANA CARE
HEALTH SYSTEM

THE CHRISTIANA CARE WAY

We serve our neighbors as respectful, expert, caring partners in their health. We do this by creating innovative, effective, affordable systems of care that our neighbors value.



CHRISTIANA CARE
HEALTH SYSTEM

Why We Need Enhanced Primary Care

- Increase access to care for neighbors
- Eliminate health disparities
- Decrease health care costs within the State
- Enhance caregiver wellbeing

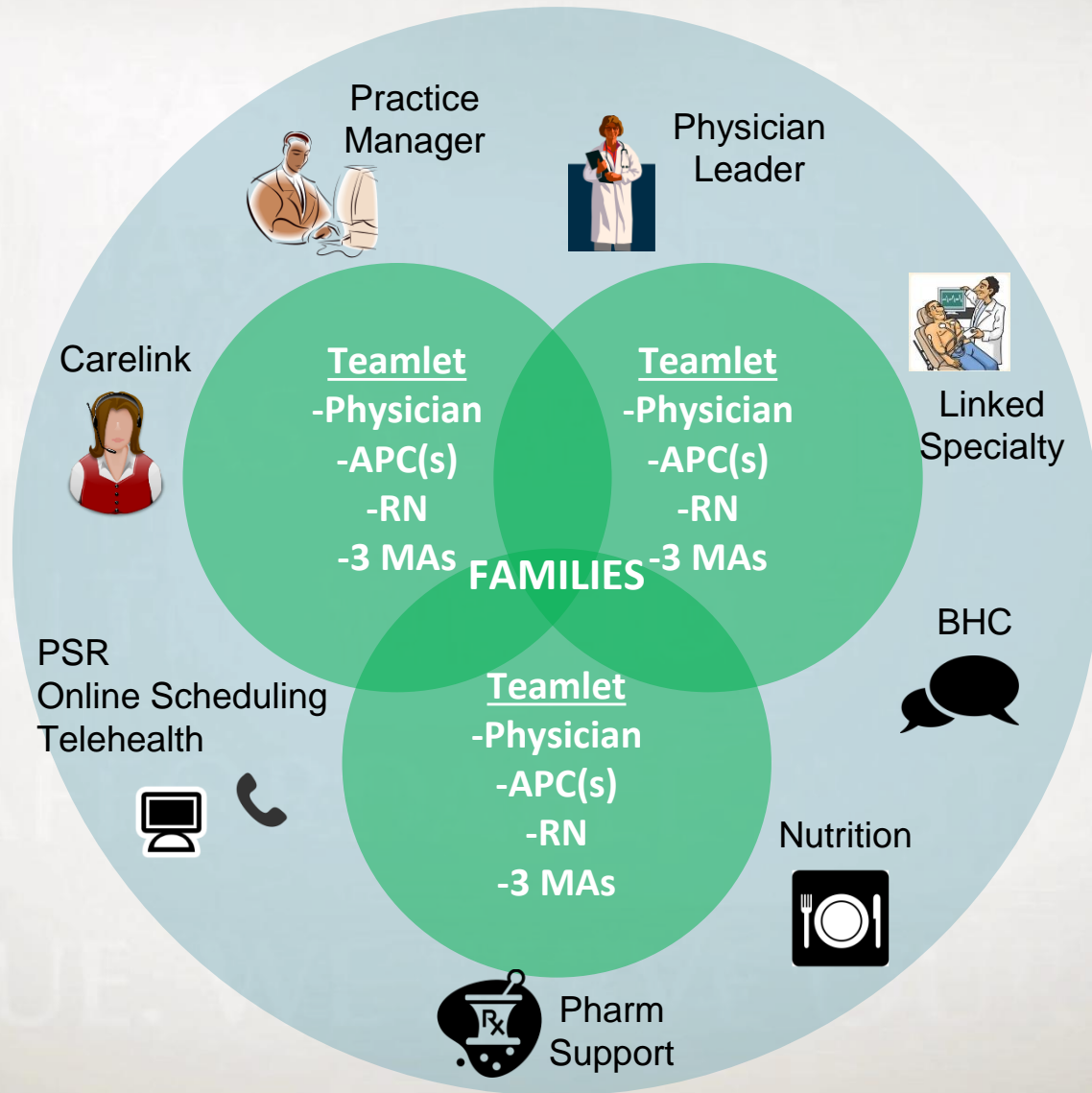
Assessment of Need: Physician Shortage by 2022

Neighborhood	2022 Population	Estimated Physician Need in Zone
New Castle	63,545	38
Lower New Castle County	60,189	26
Bear/Glasgow	136,125	36
City of Wilmington	96,924	5
Claymont	30,513	15
Brandywine (Concord)	46,696	0
Hockessin	25,829	6
Newark	118,441	14

Reimagining Primary Care

- **Team based care**
- **Data to support quality and utilization metrics**
- **Carelink Care Now – RN care management, social work, and pharmacy**
- **ONE Electronic health record**
- **Innovative Models of Care Delivery**
 - **Virtual Primary Care for employees and adult dependents**
 - **Behavioral Health Medical Home**
 - **Telehealth platform**
- **Focused resident recruitment: FM, IM, Med/Peds, Psych**
- **APC Fellowship in Primary Care**

Christiana Care Teamlet Model

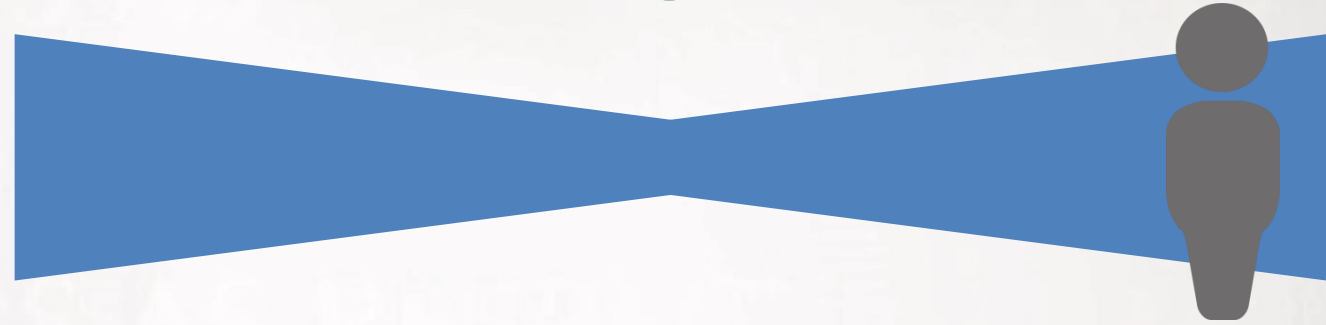


Practices will serve 10,000+ patients

Primary Care and Specialty Integration

Primary Care Practice

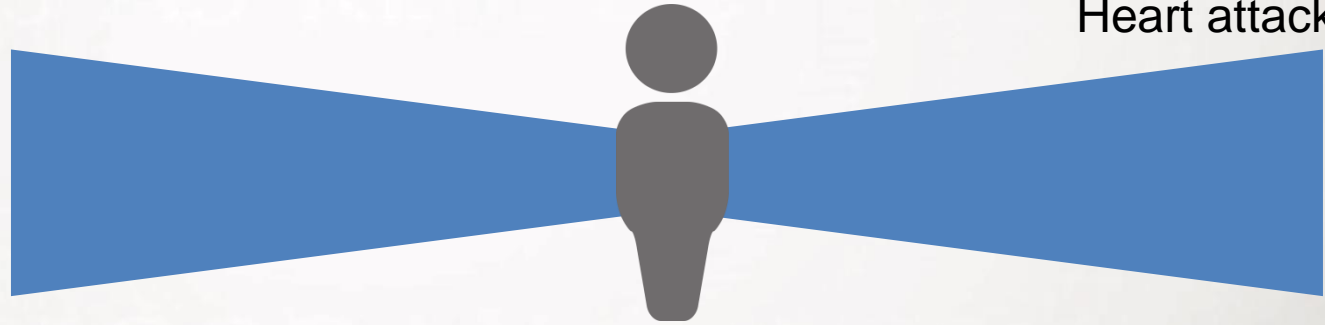
Cardiology Practice



Heart attack

Primary Care Practice

Cardiology Practice



3 months after heart attack

Primary Care Practice

Cardiology Practice



3 years after heart attack

