



DELAWARE HEALTH AND SOCIAL SERVICES

HEALTH MANAGEMENT ASSOCIATES

Update on State Innovation Model (SIM) Activities: Behavioral Health Integration & Healthy Neighborhoods

Calories
Heart rate
Blood sugar
Blood pressure



W W W . H E A L T H M A N A G E M E N T . C O M



DELAWARE HEALTH AND SOCIAL SERVICES

HEALTH
MANAGEMENT
ASSOCIATES

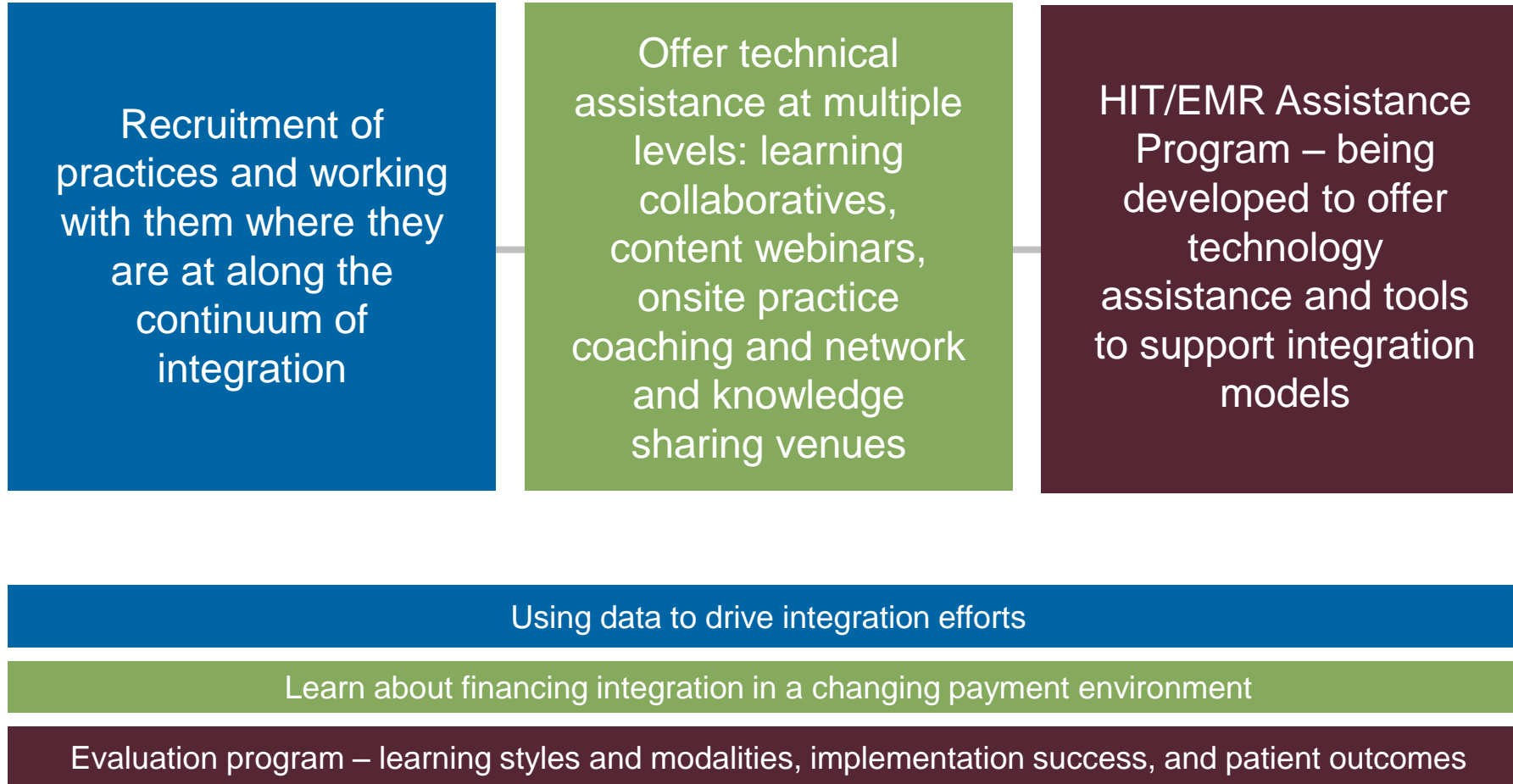
Update on Delaware HCC Behavioral Health Integration Pilot Program

DECEMBER 7, 2017

DEVELOP AND IMPLEMENT A STRATEGY TO PROMOTE INTEGRATION OF PRIMARY CARE AND BEHAVIORAL HEALTH...

- + Offering several options of pilots along the continuum of behavioral health integration:**
 - + Building referral relationship and connectivity between primary care and behavioral health practices**
 - + Co-location model development**
 - + Full integration through the collaborative care model**
 - + Integration of primary care into behavioral health**
 - + Assistance with HIT tools to aid in integration and connectivity**
- + We want to work with the Delaware clinics wherever they are starting from and adapt and enhance what's already working**

■ BEHAVIORAL HEALTH INTEGRATION PILOT PROGRAM



■ UPDATE | CURRENT STATUS

- + Conducted 2 kickoff webinars and have sent application to all those in attendance. Flyer, application and webinar recording is also available on the HCC website
- + 5 applications received so far
- + Met with the DCHI Clinical Committee the week of Thanksgiving and the first week in December holding multiple stakeholder meetings across the state to continue recruitment strategy as well as
- + Beginning to plan the site visits in January and learning collaboratives for February

■ DISCUSSION ON NEXT STEPS

- + How do we learn and build on what is already happening in the state?**
 - + Transformation work**
 - + Integration work**
 - + Other**
- + Any suggestions for key thought leaders in the state, partners that would be critical for training, coaching, recruiting?**
- + Any suggestions to help develop the EMR/HIT assistance part of the program?**

CONTACT US



NANCY JAECKELS KAMP

Managing Principal, Project Lead

952.250.6269

nkamp@healthmanagement.com



LISA WHITTEMORE

*Principal, Technical Assistance
Lead*

617.720.7800

lwhittemore@healthmanagement.com

HEALTH MANAGEMENT ASSOCIATES



DELAWARE HEALTH AND SOCIAL SERVICES

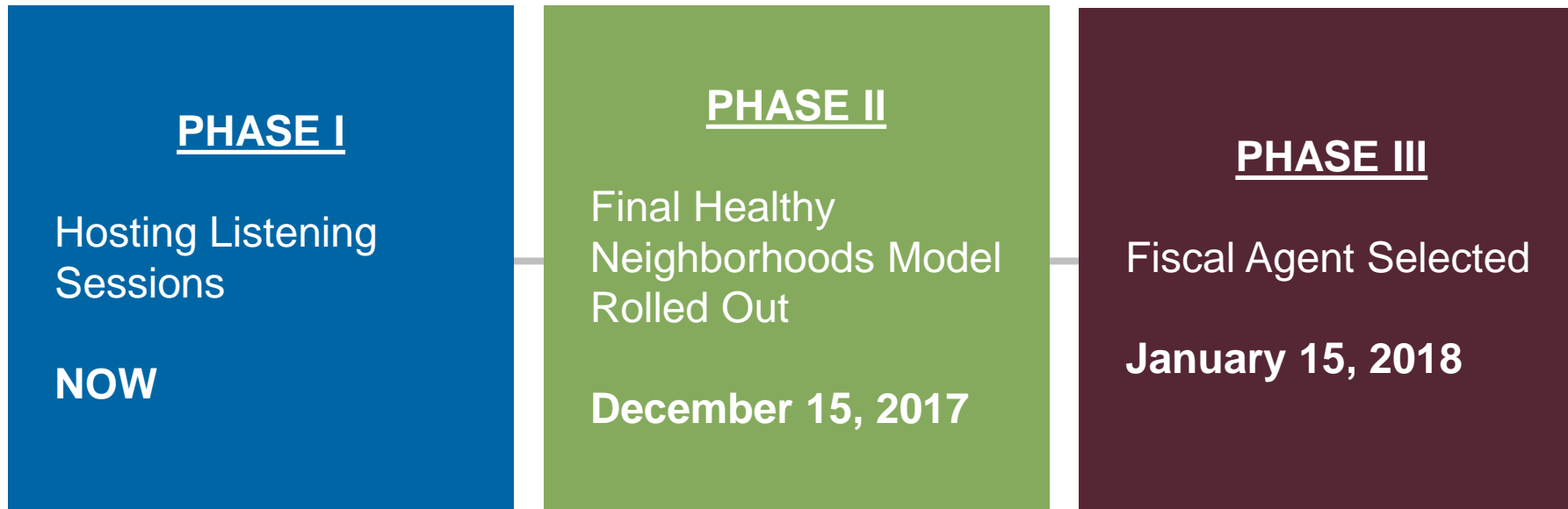
HEALTH
MANAGEMENT
ASSOCIATES

Update on Delaware Healthy Neighborhoods Initiative

DECEMBER 7, 2017



HMA Team had created phased approach in order to select fiscal agent and begin disbursement of mini-grants.



PROPOSED MODEL

HEALTHY NEIGHBORHOODS MODEL



STATEWIDE FISCAL AGENT

Fiscal agent will disburse funds directly to Neighborhood Initiatives



3-STEP MINI-GRANT DISBURSEMENT

1. Complete Readiness Assessment
2. Present to statewide sounding board to obtain support and ensure sustainability
3. Obtain Local Council approval



STATEWIDE CONSORTIUM

Shared learning, community-level data, sustainability, policy



- + Who are critical stakeholders?
- + What are we missing or not thinking about?

CONTACT ME



LIDDY GARCIA-BUNUEL

*Principal, Healthy Neighborhoods
Lead*

202.601.7751

lgarciabunuel@healthmanagement.com

HMA

HEALTH 
MANAGEMENT
ASSOCIATES