


TELEHEALTH UPDATE

Presentation to Health Care Commission 12-3-2020

- 
- A person is shown in profile on the left, looking at a laptop. The laptop screen displays a video call with another person. The background is a blurred office setting. A large teal and purple gradient shape is on the right side of the slide.
- Administrative changes
 - Highlights of the current state regs and policies
 - Initiatives and access
 - next steps

ADMINISTRATIVE CHANGES

- DHSS leadership
- Strategic Plan
- Website
- Social Media



HB348

- **AN ACT TO AMEND TITLES 18 AND 24 OF THE DELAWARE CODE RELATING TO TELEMEDICINE SERVICES**
- Suspends statutory requirements that patients present in-person before telemedicine services may be provided
- Suspends requirement that a patient must be in Delaware at the time the telemedicine services are provided
- Permits telemedicine services via non-smart phones or land line connections.
- Requires that telemedicine services permitted under this Act receive the same insurance coverage as under existing law.

1409

- **INSURANCE COVERAGE FOR TELEMEDICINE AND TELEHEALTH**
- Final order dated 11-1-20: expires on July 1, 2021 unless extended by order of the Commissioner.
- Indicates telemedicine-related requirements in the Declaration as further modified in the Joint Order.
- The Act includes revisions to sections 3370 and 3571R of the Delaware Insurance Code.” Revisions were made to conform language in the 1409 with the Act.

A blurred background image showing a physical therapist in a white coat and mask, interacting with a patient. The therapist is leaning over, possibly performing a physical examination or treatment. The patient is lying down, and the therapist's hands are visible near the patient's head/neck area. The overall scene is in grayscale, emphasizing the professional and clinical nature of the work.

2600

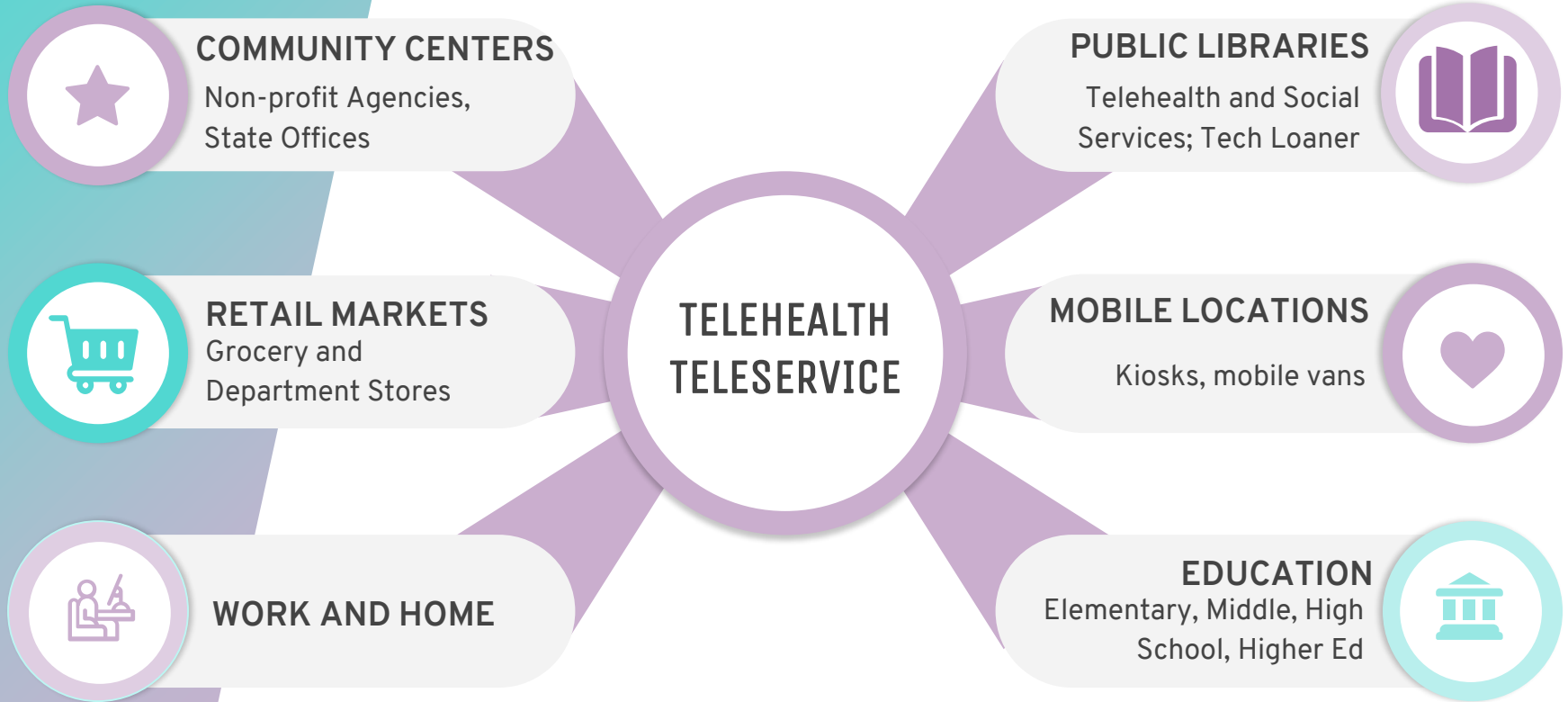
- **EXAMINING BOARD OF PHYSICAL THERAPISTS AND ATHLETIC TRAINERS**
- Permits all evaluations, including initial evaluations, to be conducted via telehealth
- Permits the supervising Physical Therapist the option to supervise in-person or via telehealth

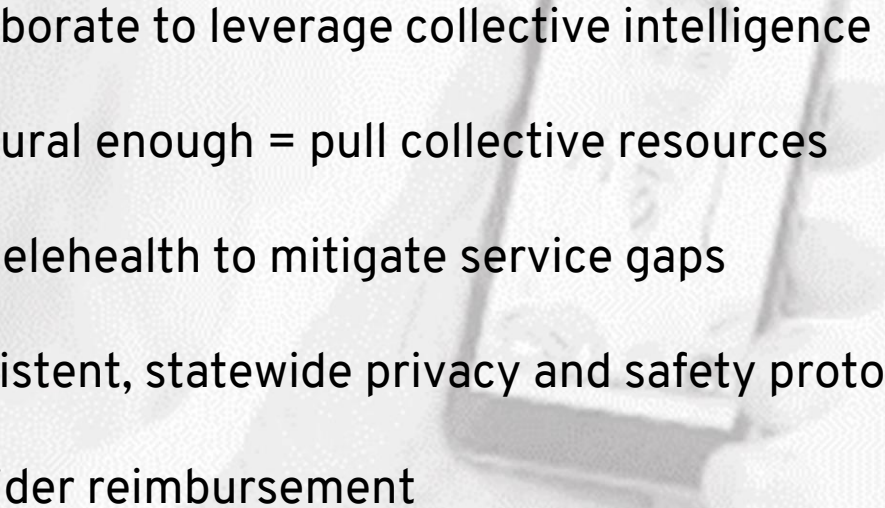
REGULATION

CMS 1730-F

- Permanent changes in home health regulations
- Permits utilization of telecommunications technologies under the Medicare home health benefit provided it is included on the patient's plan of care.


MAXIMIZING ACCESS TO SERVICES



- 
- A hand holding a smartphone with a medical chart on the screen. The chart shows a patient's information and a list of items, possibly a medication list or a care plan. The background is a light, textured surface.
- Collaborate to leverage collective intelligence
 - Not rural enough = pull collective resources
 - Use telehealth to mitigate service gaps
 - Consistent, statewide privacy and safety protocols
 - Provider reimbursement

DISCUSS NEXT STEPS

CONTACT INFORMATION



Susan Campbell
Director of Telehealth
Planning Unit, Division of Management Services
Delaware Health and Social Services

susan.campbell@delaware.gov

302-255-9137