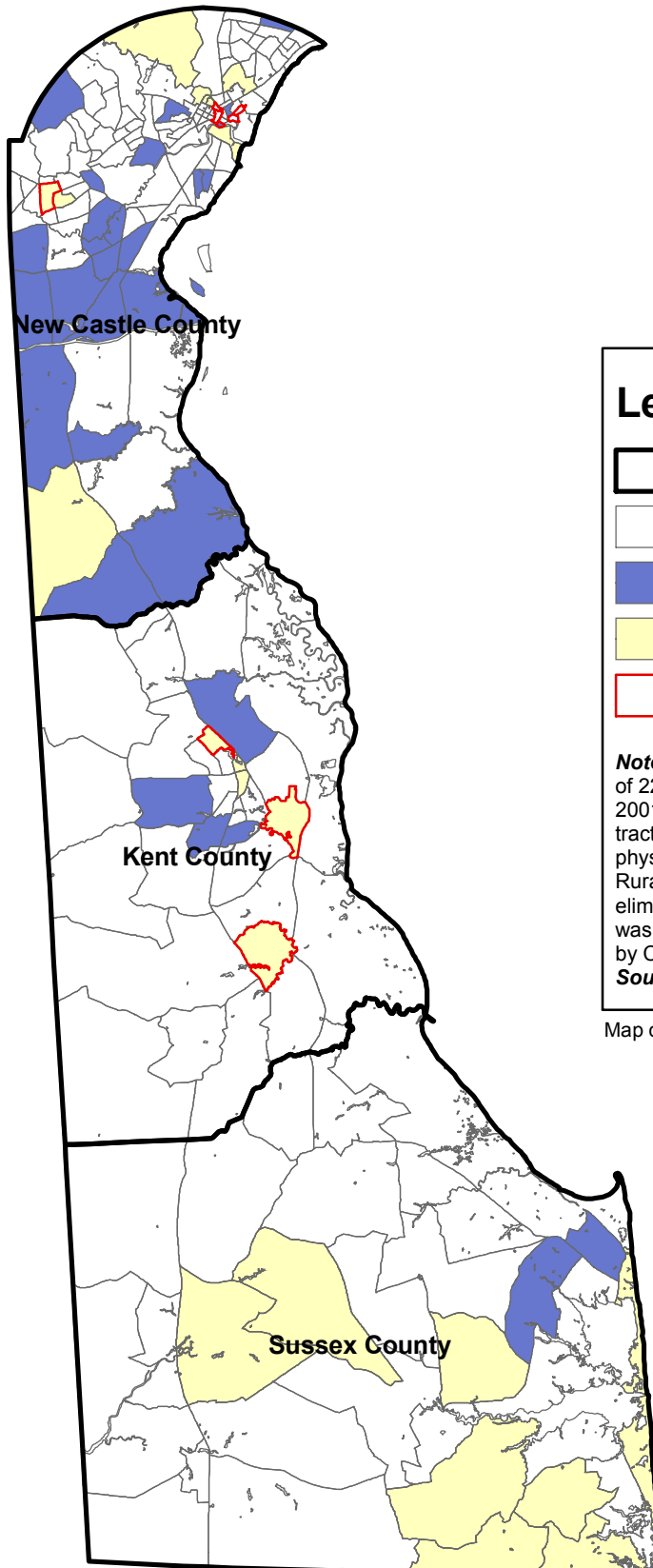







# Five-year Age-adjusted Cancer Incidence Rates Delaware Census Tracts, 2001-2005



## Legend

-  Counties
-  Not significantly different
-  Significantly Higher Rates
-  Significantly Lower Rates
-  Fewer than 25 cases

**Note:** Census tracts were accurately assigned to 96.5% of 22,023 cancer cases diagnosed in Delaware between 2001 and 2005. For the remaining 3.5% of cases, census tract assignment was impossible due to missing or non-physical address information (for example, P.O. Box and Rural Route addresses). A total of 774 cases were eliminated from analysis because census tract assignment was impossible. For more information, see "Cancer Rates by Census Tract: Methodology".

**Source:** Delaware Cancer Registry

Map created by Delaware Health Statistics Center

