

DELAWARE VITAL STATISTICS ANNUAL REPORT INFANT MORTALITY, 2019



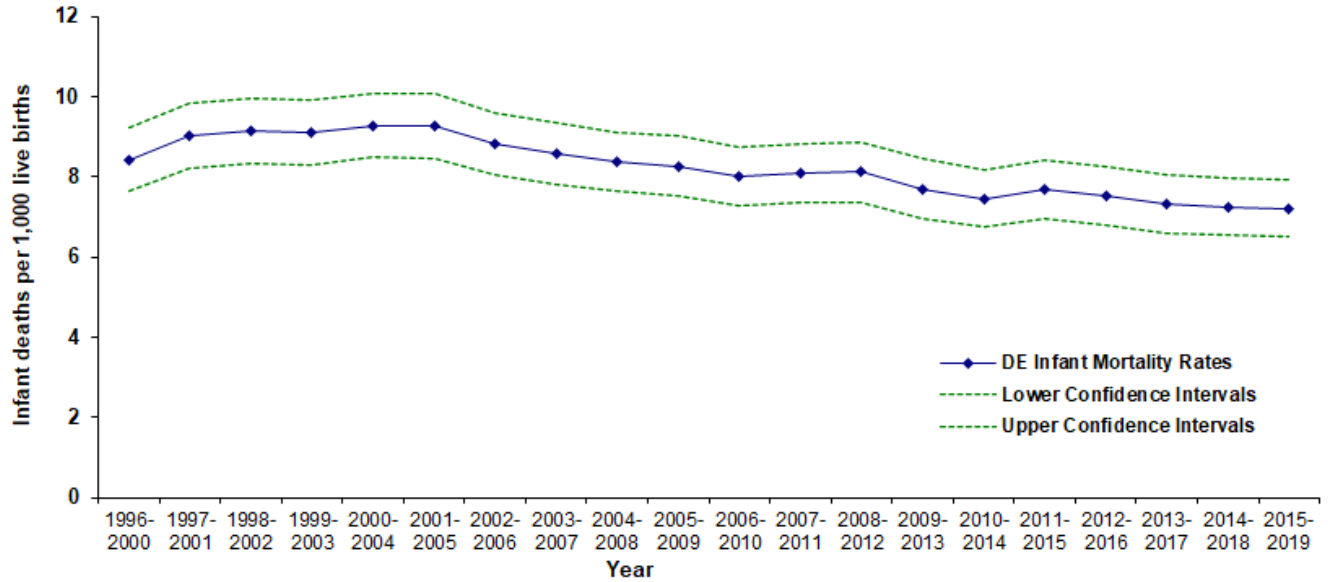
Suggested Citation:

Delaware Health Statistics Center. *Delaware Vital Statistics Annual Report, 2019*.
Delaware Department of Health and Social Services, Division of Public Health, 2021.

INFANT MORTALITY

In 2015-2019, Delaware's infant mortality rate (IMR) was 7.2 infant deaths per 1,000 live births, resulting in a total decline of 22.6 percent from the 2000-2004 rate of 9.3 infant deaths per 1,000 live births.

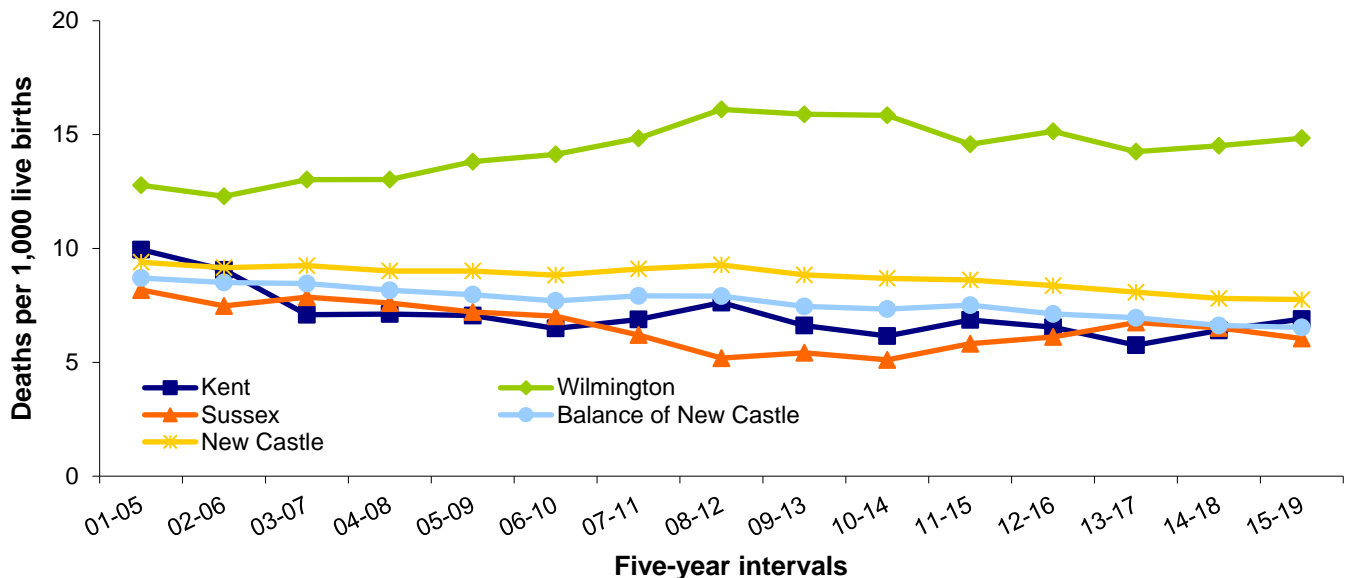
Figure 27. Five-year Average Infant Mortality Rates with Confidence Intervals, Delaware, 1996-2019



Source: Delaware Department of Health and Social Services, Division of Public Health, Delaware Health Statistics Center

Wilmington's IMR continued to be the highest in Delaware. The combination of Wilmington's high IMR and a high IMR in the balance of New Castle County resulted in New Castle County's IMR being higher than the IMRs of both Kent and Sussex counties at 7.8 infant deaths per 1,000 live births. In 2015-2019 Sussex County's IMR remained the lowest at 6.0 infant deaths per 1,000 live births. During the same time period the balance of New Castle County's IMR was 6.5 infant deaths per 1,000 live births; Wilmington's IMR was 14.8 infant deaths per 1,000 live births; and Kent County's IMR was 6.9 infant deaths per 1,000 live births.

Figure 28. Five-year Average Infant Mortality Rates, Delaware Counties and City of Wilmington, Delaware, 2001-2019

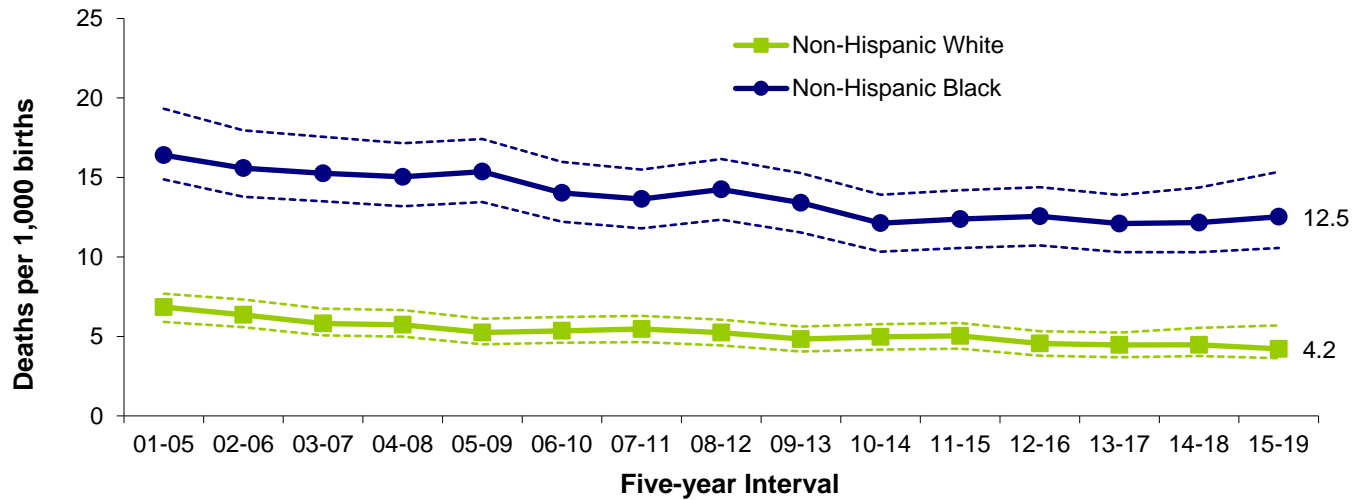


Source: Delaware Health and Social Services, Division of Public Health, Delaware Health Statistics Center

INFANT MORTALITY

Non-Hispanic black infants experienced a lower percentage of decrease in mortality rates than non-Hispanic white infants. In 2015-2019 the non-Hispanic black IMR of 12.5 infant deaths per 1,000 live births was a 24 percent decrease from the 16.4 rate in 2001-2005. Non-Hispanic white IMR decreased 38 percent from 6.8 in 2001-2005 to 4.2 infant deaths per 1,000 live births in 2015-2019.

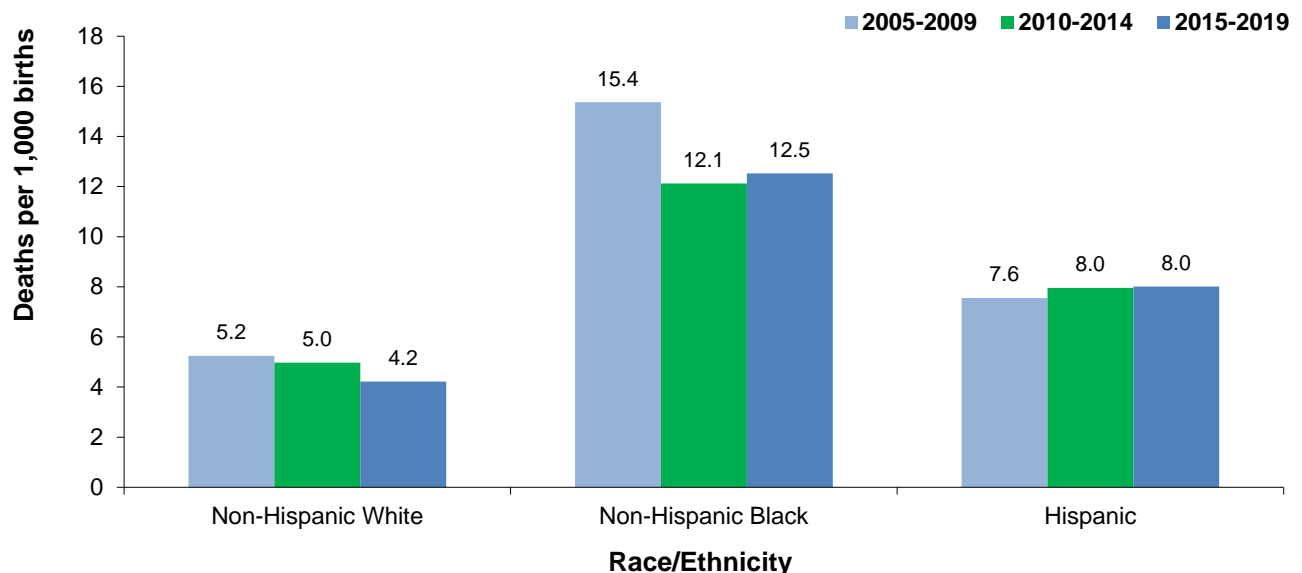
Figure 29. Five-year Average Infant Mortality Rates by Race with Confidence Intervals, Delaware, 2001-2019



Source: Delaware Department of Health and Social Services, Division of Public Health, Delaware Health Statistics Center

Significant disparities existed between non-Hispanic black and non-Hispanic white infant mortality rates. Non-Hispanic black IMRs were three times higher than the non-Hispanic white IMRs in 2015-2019. Non-Hispanic black IMRs were highest in all three time periods depicted below with the highest rate of 15.4 infant deaths per 1,000 live births in 2005-2009. The non-Hispanic black rate in 2015-2019 was 1.6 times higher than the Hispanic rate of 8.0 infant deaths per 1,000 live births. From 2005-2009 to 2015-2019 the Hispanic IMR increased five percent (7.6 to 8.0 infant deaths per 1,000 live births).

Figure 30. Five-year Average Infant Mortality Rates by Race and Hispanic Origin, Delaware 2005-2019

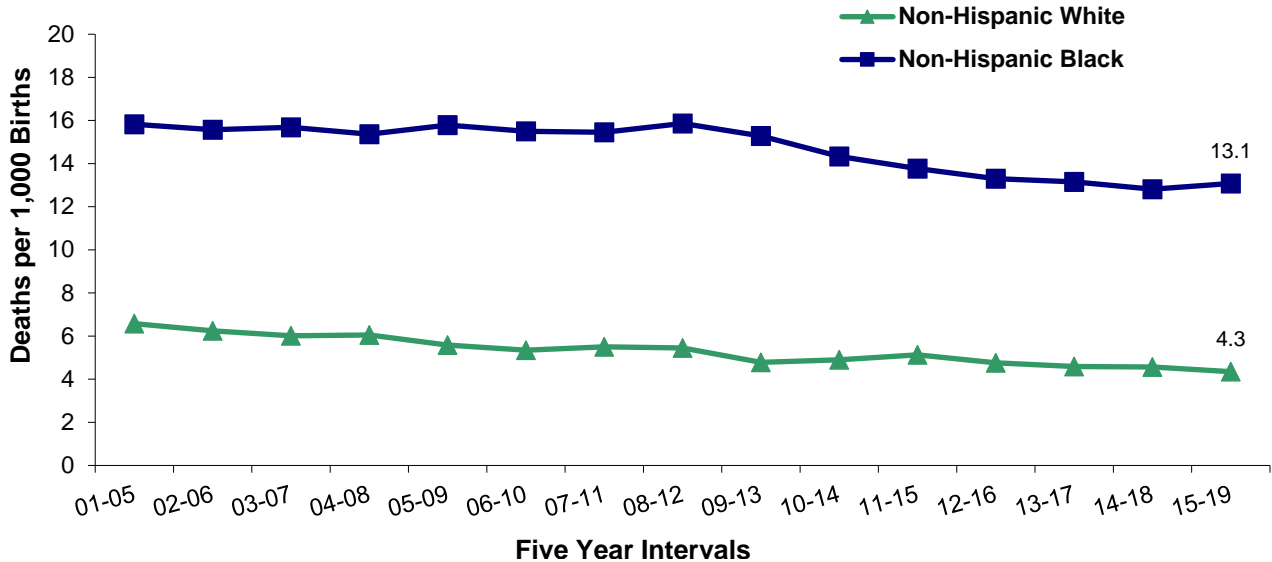


Source: Delaware Department of Health and Social Services, Division of Public Health, Delaware Health Statistics Center

INFANT MORTALITY- Leading Causes of Death

In 2015-2019, New Castle County had the highest IMRs and Sussex had the lowest. Non-Hispanic black IMRs in New Castle County were stable at 16 infant deaths per 1,000 live births from 2000 to 2012, and decreased 18 percent to 13.1 infant deaths per 1,000 live births in 2015-2019. Disparity between the races is evident in all three counties, with the New Castle non-Hispanic black rate three times higher than the non-Hispanic white rate for 2015-2019.

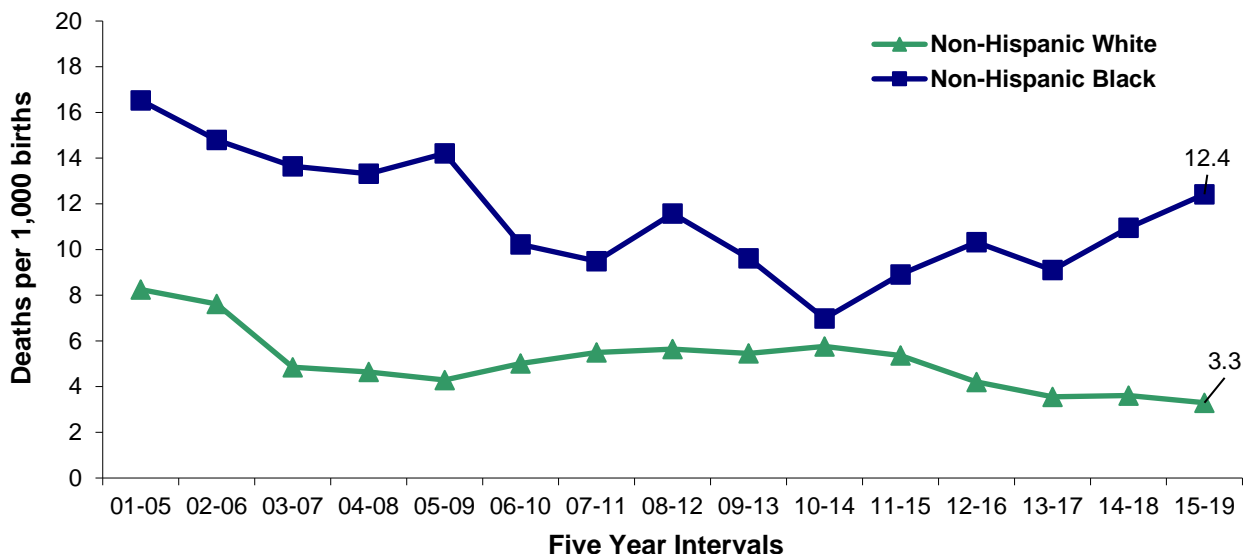
Figure 31. Five-year Average Infant Mortality Rates by Race, New Castle County, Delaware, 2001-2019



Source: Delaware Department of Health and Social Services, Division of Public Health, Delaware Health Statistics Center

Non-Hispanic black IMRs in Kent County peaked at 16.5 infant deaths per 1,000 live births in 2001-2005. The non-Hispanic black IMR decreased 25 percent to 12.4 infant death per 1,000 live births in 2015-2019. The non-Hispanic white IMR had a 60 percent decrease from 2001-2005 to 2015-2019 (8.2 to 3.3 infant deaths per 1,000 live births). The non-Hispanic Black IMR was almost four times higher than the non-Hispanic white IMR.

Figure 32. Five-year Average Infant Mortality Rates by Race, Kent County, Delaware, 2001-2019

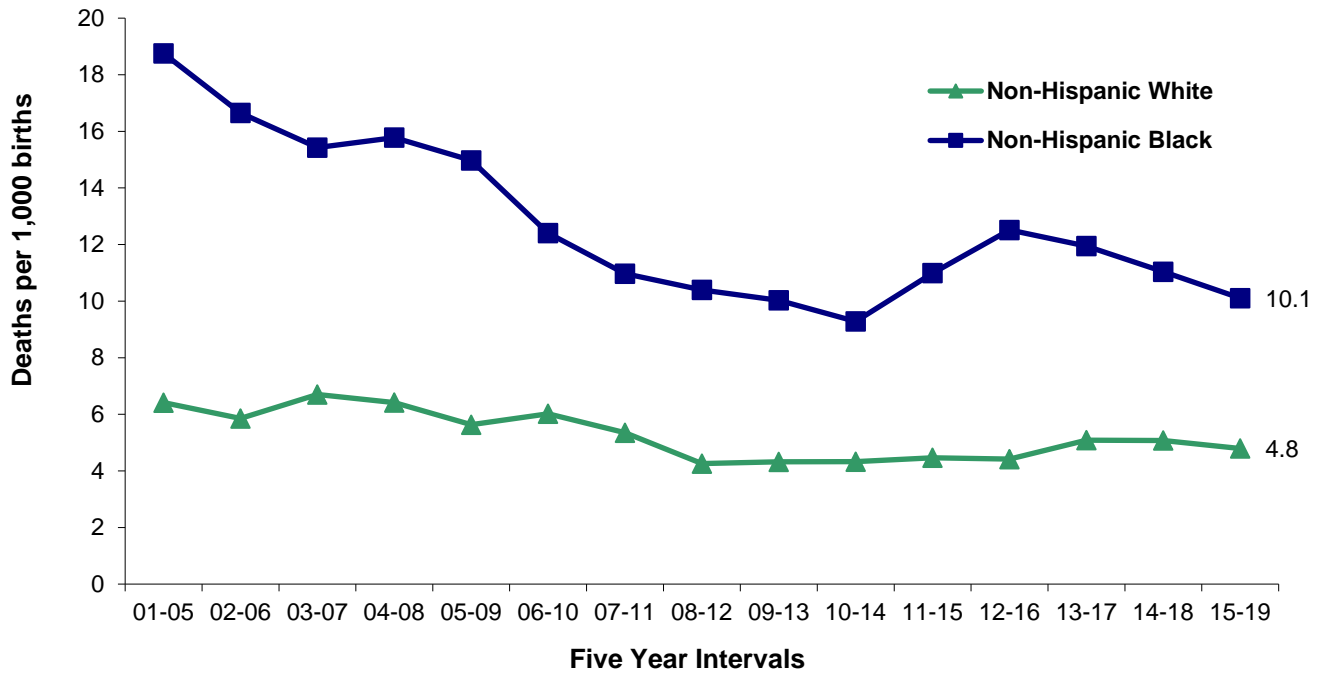


Source: Delaware Department of Health and Social Services, Division of Public Health, Delaware Health Statistics Center

INFANT MORTALITY- Leading Causes of Death

Sussex County's non-Hispanic black IMR decreased to 10.1 infant deaths per 1,000 live births in 2015-2019, a 46 percent reduction from the 2001-2005 peak of 18.8 infant deaths per 1,000 live births. Sussex County's non-Hispanic white IMR had a 25 percent decrease from its peak in 2003-2007 to 2015-2019 (6.4 to 4.8 infant deaths per 1,000 live births). Sussex County had the smallest disparity between the races with non-Hispanic black IMRs two times higher than non-Hispanic white IMRs in 2015-2019.

Figure 33. Five-year Average Infant Mortality Rates by Race, Sussex County, Delaware, 2001-2019



Source: Delaware Department of Health and Social Services, Division of Public Health, Delaware Health Statistics Center

INFANT MORTALITY- Leading Causes of Death

In 2015-2019 there were 389 infant deaths. The five leading causes of infant death in Delaware were:

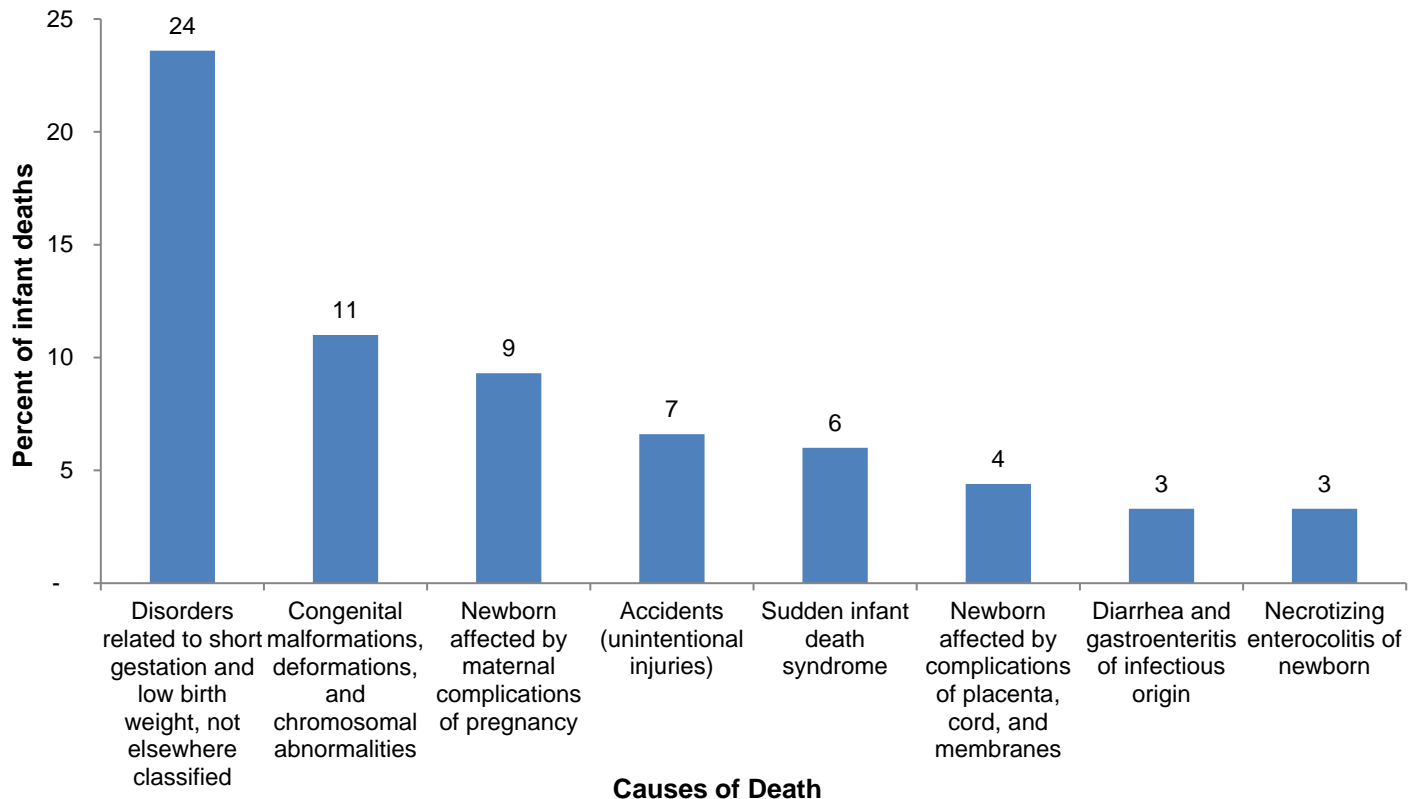
- Disorders related to short gestation and low birthweight, which accounted for 21.3 percent of infant deaths.
- Congenital anomalies (birth defects), which accounted for 14.9 percent of infant deaths.
- Newborns affected by maternal complications of pregnancy, which accounted for 11.1 percent of infant deaths. Of the 43 deaths attributed to this cause, 36 were due to the newborn being affected by incompetent cervix and premature rupture of membranes
- Sudden infant death syndrome (SIDS), which accounted for 4.4 percent of all infant deaths.
- Accidents (unintentional injuries), which accounted for 3.9 percent of infant deaths.

In sum, the five most common causes of infant death accounted for 56 percent, or 216 of the 389 total infant deaths.

The most frequent causes of death by race are shown in Figures 34-36. Birth defects, disorders related to short gestation and low birthweight, and newborn affected by maternal complications of pregnancy were the top three most frequent causes of death non-Hispanic black, non-Hispanic white, and Hispanic infants.

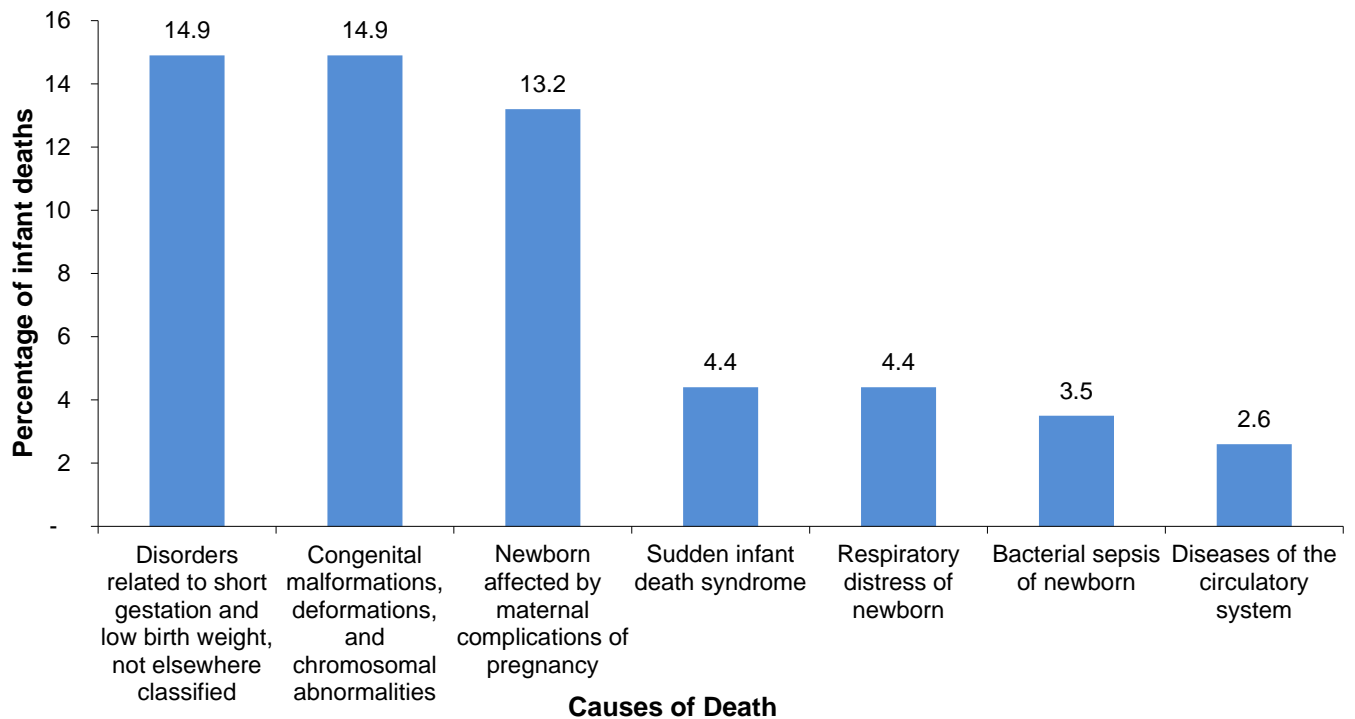
Though the proportions of deaths by race were similar for many of the causes of death, notable exceptions were accidents and disorders due to prematurity and low birthweight. In 2015-2019, while accidents were responsible for one percent of all non-Hispanic white infant deaths, they accounted for seven percent of non-Hispanic black infant deaths. In 2015-2019, infant deaths due to disorders related to prematurity and low birthweight also accounted for larger percentages of non-Hispanic black infant deaths (24 percent) than non-Hispanic white infant deaths (15 percent).

Figure 34. Percentage of the Most Frequent Causes of Non-Hispanic Black Infant Death, Delaware, 2015-2019



Source: Delaware Department of Health and Social Services, Division of Public Health, Delaware Health Statistics Center

Figure 35. Percentage of the Most Frequent Causes of Non- Hispanic White Infant Death, Delaware 2015-2019

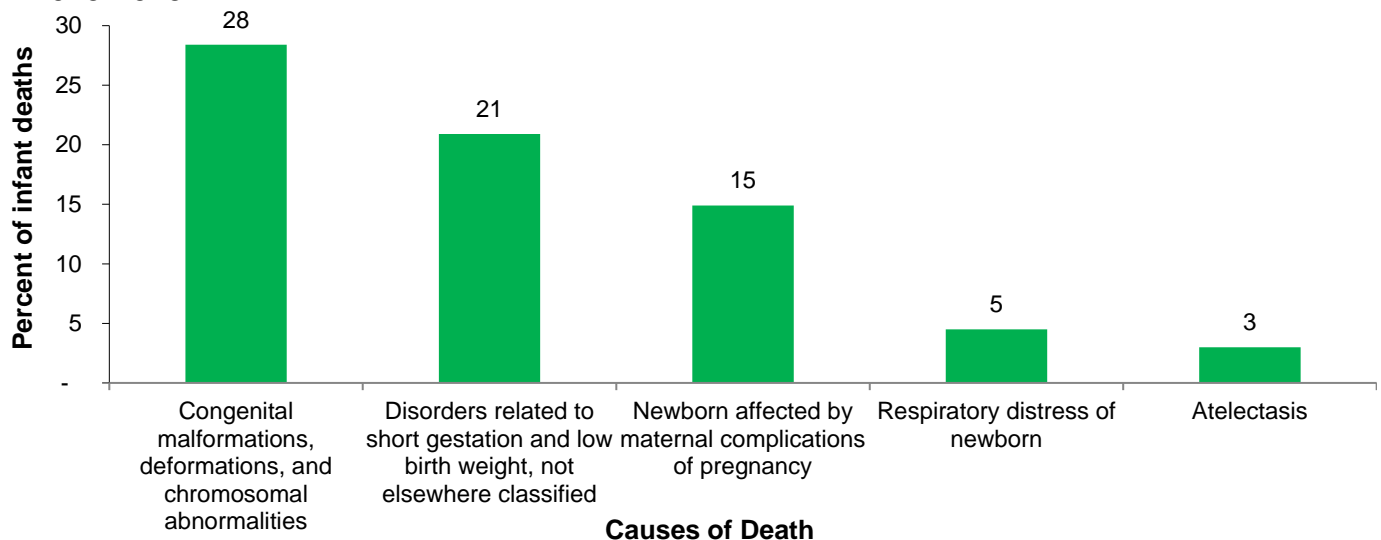


Source: Delaware Department of Health and Social Services, Division of Public Health, Delaware Health Statistics Center

In 1989-1993, Hispanic births accounted for 3.6 percent of all live births and 3.4 percent of infant deaths; since that time, the proportion of births to Hispanic mothers has quadrupled. In the most recent five-year period, 2015-2019, 15.5 percent of all live births were to Hispanic mothers, and 17.2 percent of all infant deaths were of Hispanic origin.

Two causes of death accounted for the greatest number of Hispanic infant deaths: birth defects and disorders related to prematurity and low birthweight.

Figure 36. Percentage of the Most Frequent Causes of Hispanic Infant Death, Delaware, 2015-2019



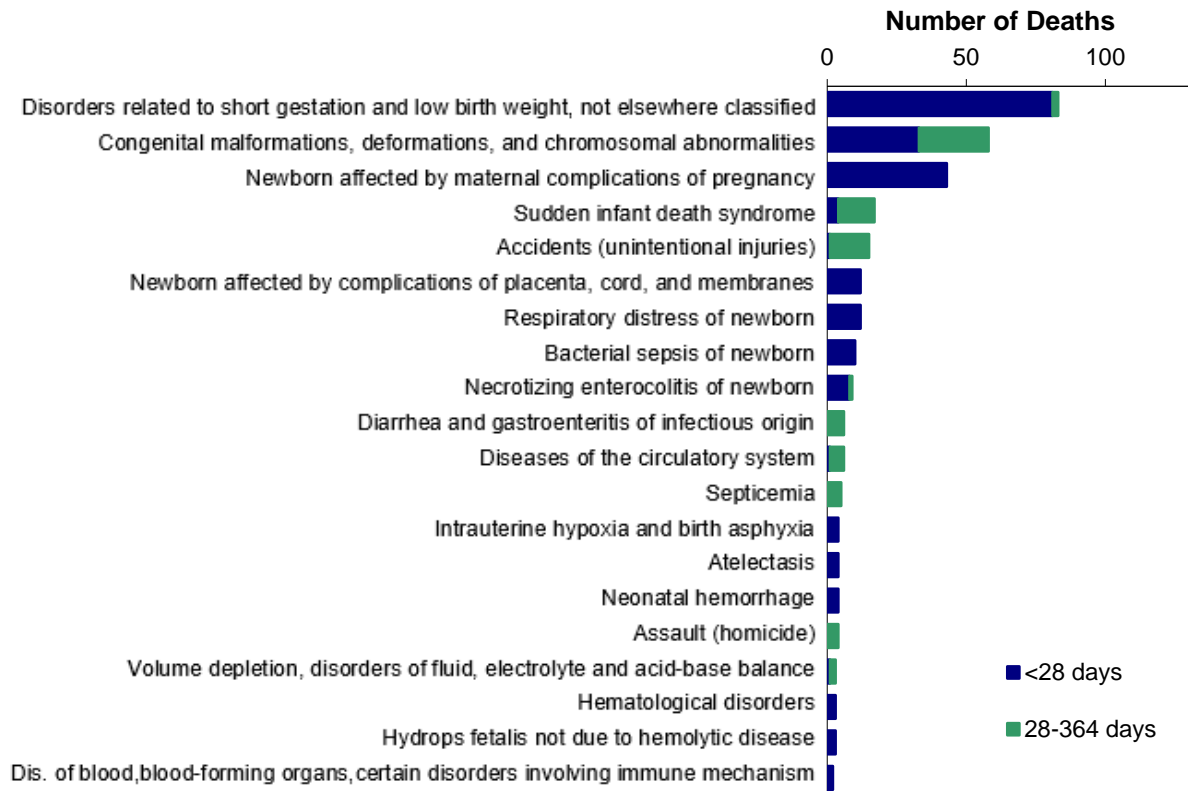
Source: Delaware Department of Health and Social Services, Division of Public Health, Delaware Health Statistics Center

INFANT MORTALITY- Leading Causes of Death

In 2015-2019, approximately 94 percent of all infant deaths occurred within the first six months of life, 70.4 percent occurred within the first 28 days of life, and 41 percent occurred within 24 hours of birth.

Figure 37 displays deaths by specific cause and the infant's age classification at death: neonatal (<28 days), or postneonatal (28-364 days).

Figure. 37 Most Frequent Causes of Infant Death, Delaware, 2015-2019



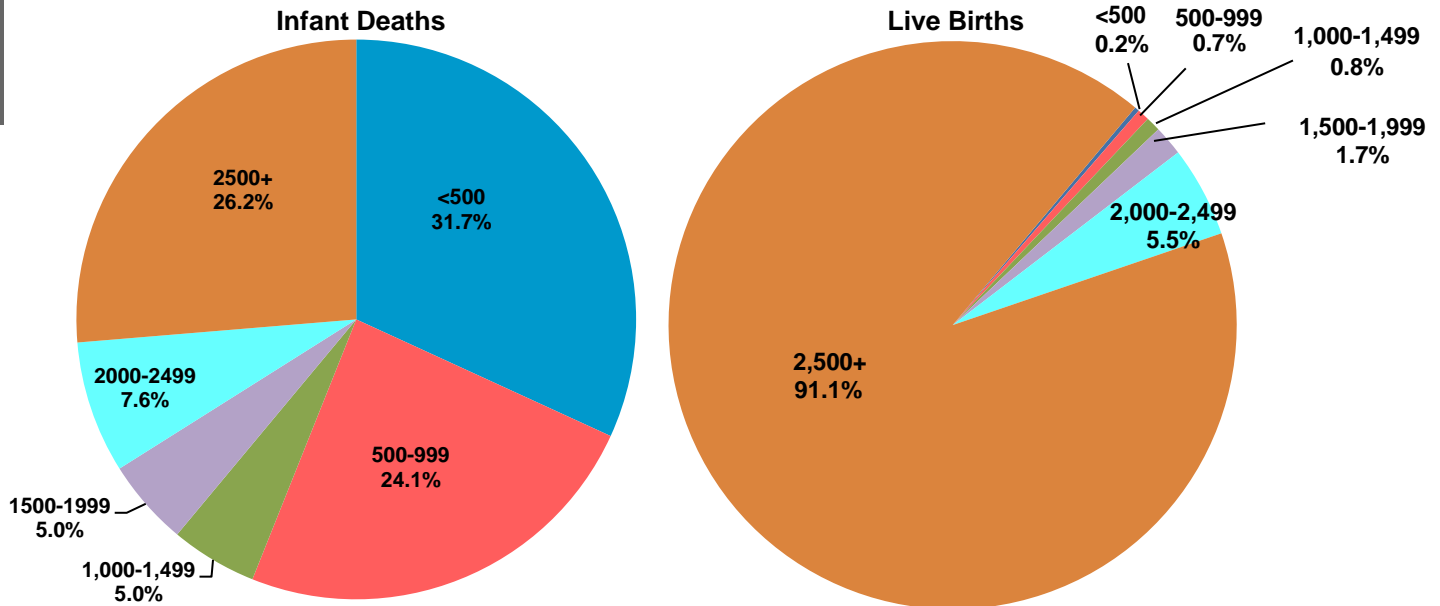
Source: Delaware Department of Health and Social Services, Division of Public Health, Delaware Health Statistics Center

- Prematurity and low birthweight accounted for the greatest number of infant deaths in 2015-2019; 98 percent of these deaths occurred in the neonatal period.
- Sudden infant death syndrome (SIDS) was one of the top five causes of death. The majority of these deaths occurred in the postneonatal period, with a mean age at death of 78 days. SIDS deaths decreased 59 percent from 2010-2014 to 2015-2019 (41 to 17 SIDS deaths). The number of infant deaths in 2015-2019 (389) decreased six percent from the number of infant deaths in 2010-2014 (412).
- Sixty-five percent (11 out of 17) of the SIDS deaths were associated with co-sleeping and/or sleeping on soft surfaces, such as couches and adult beds.
- In 2015-2019, there were 16 additional infant deaths coded under a different cause of death that were associated with co-sleeping and/or sleeping on a soft surface. In total, seven percent of all infant deaths were associated with co-sleeping and/or unsafe sleep practices.

INFANT MORTALITY - Live Birth Cohort

Although only 1 percent of all live births in 2014-2018 were infants weighing less than 1,000 grams, they accounted for over half (56 percent) of all infant deaths. In total, nine percent of all live births in 2014-2018 were infants of low birthweight (under 2,500 grams) and 73.4 percent of infant deaths were low birthweight.

Figure 38. Percent Distribution by Birthweight in Grams, Delaware, Live Birth Cohort, 2014-2018

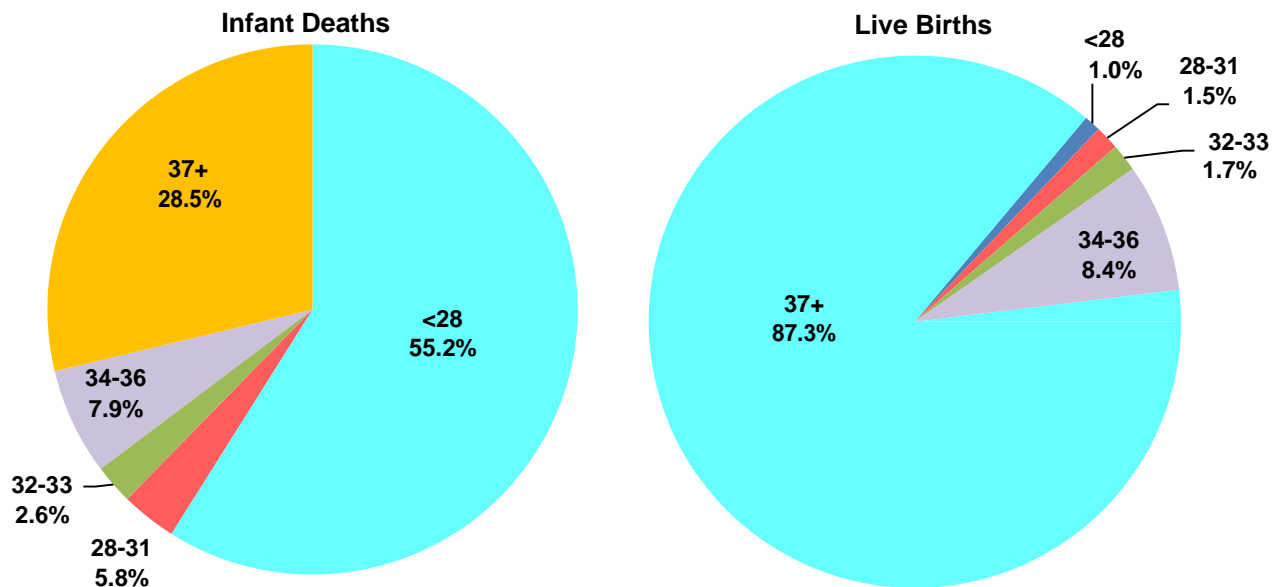


Source: Delaware Department of Health and Social Services, Division of Public Health, Delaware Health Statistics Center

Gestation and infant death demonstrated the same relationship as birthweight and infant death. Infants born at the youngest gestational age made up a very small percentage of live births, yet they accounted for the majority of infant deaths.

One percent of live births in 2014-2018 were less than 28 weeks gestation at birth, but they accounted for 55.2 percent of all infant deaths. In total, 12.6 percent of all live births in 2014-2018 were born preterm (<37 weeks of gestation) and 71.5 percent of infant deaths were preterm.

Figure 39. Distribution by Gestation in Weeks, Delaware, Live Birth Cohort, 2014-2018



Source: Delaware Health and Social Services, Division of Public Health, Delaware Health Statistics Center

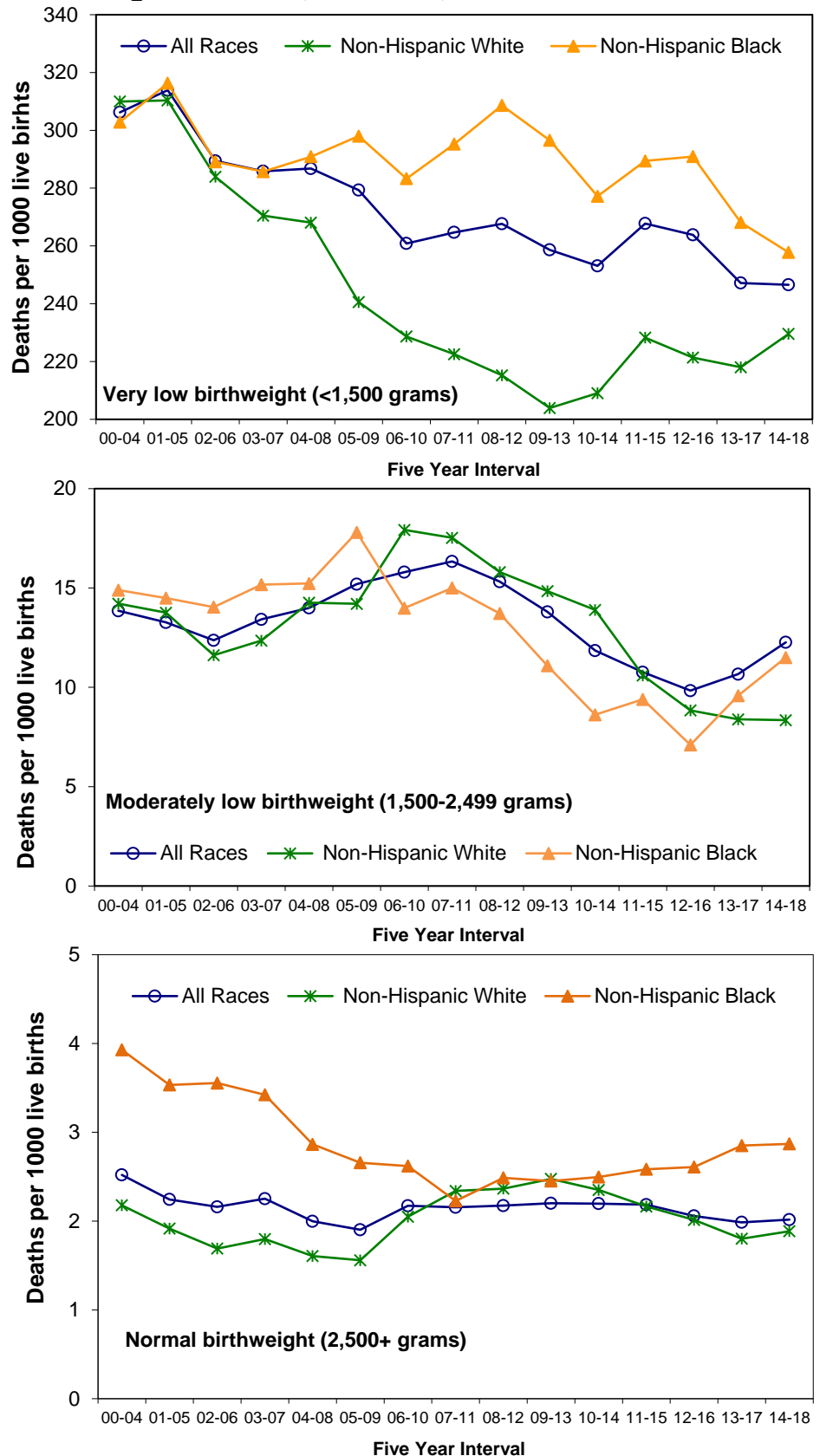
Birthweight and gestation are considered to be the most important predictors of infant health and mortality risk. Infants born too small or too early have a much greater risk of mortality than those who reach a normal birthweight (2,500+ grams) or full-term gestation (37+ weeks).

Although the IMRs decreased for both non-Hispanic white and non-Hispanic black for very low birthweight (VLBW) (<1,500 grams) since 2001-2005, the non-Hispanic black IMR of 257.8 was significantly higher than the non-Hispanic white IMR of 229.6 infant deaths per 1,000 live births in 2014-2018.

IMRs for moderately low birthweight infants of all races decreased 25 percent from its high point in 2007-2011 to 2014-2018. During that time, non-Hispanic white IMRs decreased 53 percent while the non-Hispanic black IMR decreased by 23 percent, making the non-Hispanic black IMR higher than the non-Hispanic white IMR (11.5 vs 8.3).

In 2007-2011 IMRs for normal birthweight non-Hispanic white and non-Hispanic black infants were nearly the same at 2.3 and 2.2, respectively. By 2014-2018, the non-Hispanic white IMR decreased 17 percent to 1.9 but the non-Hispanic black IMR increased 32 percent to 2.9 infant deaths per 1,000 live births. The IMR for all races had a 9 percent decrease for the same time period.

Figure 40. Five-year Average Infant Mortality Rates by Birthweight and Race, Delaware, 2000-2018 Live Birth Cohort

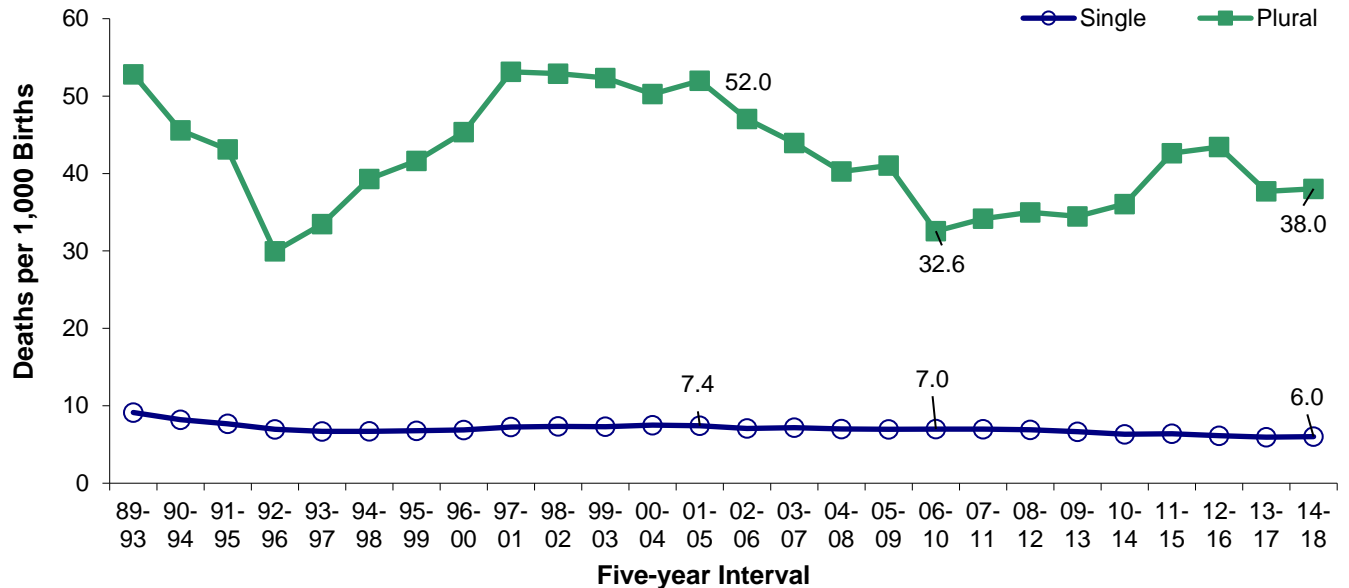


Source: Delaware Department of Health and Social Services, Division of Public Health, Delaware Health Statistics Center

INFANT MORTALITY - Live Birth Cohort

From 2001-2005 to 2006-2010, IMRs for plural births decreased 37 percent, from 52 to 33 infant deaths per 1,000 live births. Since 2006-2010, IMRs for plural births increased 17 percent from 32.6 to 38.0 infant deaths per 1,000 live births. IMRs for singleton births decreased 19 percent from 2001-2005 to 2014-2018. In 2014-2018, the infant mortality rate for plural births was more than six times that of singleton births (38.0 versus 6.0 infant deaths per 1,000 live births, respectively).

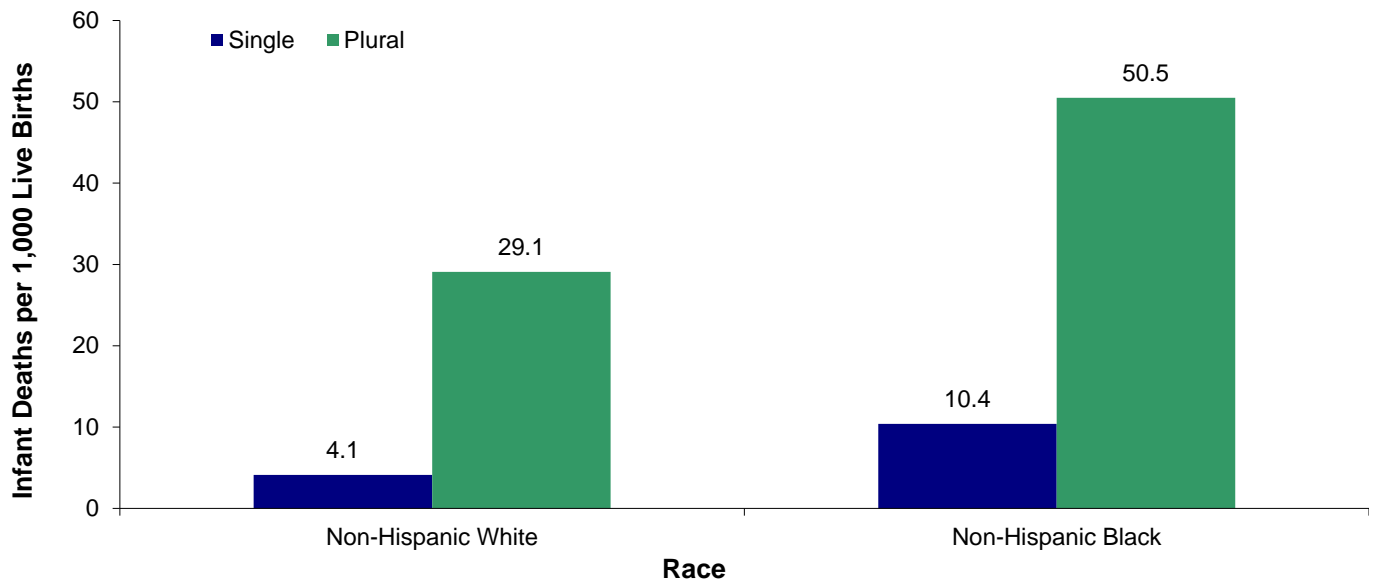
Figure 41. Five-year Average Infant Mortality Rates by Plurality, Delaware, Live Birth Cohort, 1989-2018



Source: Delaware Department of Health and Social Services, Division of Public Health, Delaware Health Statistics Center

The disparity between singleton and plural IMRs was evident regardless of race. The non-Hispanic black IMR was more than twice the non-Hispanic white IMR for singleton births and nearly two times greater for plural births.

Figure 42. Five-year Average Infant Mortality Rates by Plurality and Race, Delaware, Live Birth Cohort, 2014-2018



Source: Delaware Department of Health and Social Services, Division of Public Health, Delaware Health Statistics Center

TABLE E-1. NUMBER OF INFANT DEATHS BY RACE, COUNTY, AND CITY OF WILMINGTON, U.S., DELAWARE, 2002-2019

| Area/ Race | 2002 | 2003 | 2004 | 2005 | 2006 | 2007 | 2008 | 2009 | 2010 | 2011 | 2012 | 2013 | 2014 | 2015 | 2016 | 2017 | 2018 | 2019 |
|-------------------------|-------|-------|-------|-------|-------|-------|-------|-------|-------|-------|-------|-------|-------|-------|-------|-------|------|------|
| U.S. | | | | | | | | | | | | | | | | | | |
| All Races | 27970 | 27995 | 27860 | 28384 | 28509 | 29153 | 28075 | 26408 | 24572 | 24001 | 23654 | 23446 | 23211 | 23458 | 23157 | 22341 | N/A | N/A |
| Non-Hispanic White | 13327 | 13228 | 13001 | 13134 | 12884 | 13005 | 12509 | 11785 | 11192 | 10886 | 10759 | 10766 | 10515 | 10444 | 10204 | 9520 | N/A | N/A |
| Non-Hispanic Black | 8031 | 7836 | 7869 | 7958 | 8241 | 8351 | 7894 | 7560 | 6758 | 6670 | 6528 | 6488 | 6435 | 6624 | 6545 | 6390 | N/A | N/A |
| Non-Hispanic Other | 1289 | 1331 | 1334 | 1380 | 1368 | 1516 | 1452 | 1397 | 1324 | 1338 | 1363 | 1280 | 1273 | 1401 | 1380 | 1402 | N/A | N/A |
| Delaware | | | | | | | | | | | | | | | | | | |
| All Races | 96 | 107 | 97 | 106 | 99 | 91 | 101 | 91 | 88 | 98 | 84 | 68 | 74 | 100 | 87 | 72 | 62 | 68 |
| Non-Hispanic White | 52 | 41 | 43 | 36 | 39 | 33 | 37 | 24 | 38 | 39 | 24 | 22 | 27 | 38 | 23 | 18 | 19 | 16 |
| Non-Hispanic Black | 35 | 49 | 44 | 53 | 44 | 38 | 49 | 52 | 35 | 38 | 43 | 33 | 29 | 38 | 39 | 37 | 33 | 35 |
| Non-Hispanic Other | 3 | 1 | 2 | 3 | 4 | 1 | 0 | 7 | 4 | 10 | 6 | 1 | 6 | 6 | 8 | 3 | 2 | 7 |
| Kent | | | | | | | | | | | | | | | | | | |
| All Races | 27 | 16 | 17 | 21 | 13 | 9 | 18 | 18 | 15 | 17 | 17 | 6 | 13 | 23 | 14 | 8 | 13 | 17 |
| Non-Hispanic White | 22 | 8 | 8 | 6 | 7 | 4 | 7 | 6 | 11 | 10 | 5 | 5 | 8 | 8 | 2 | 0 | 5 | 5 |
| Non-Hispanic Black | 5 | 7 | 8 | 14 | 5 | 4 | 7 | 12 | 3 | 3 | 10 | 1 | 4 | 9 | 8 | 7 | 7 | 9 |
| Non-Hispanic Other | 0 | 0 | 1 | 1 | 1 | 1 | 0 | 0 | 0 | 1 | 0 | 0 | 0 | 1 | 1 | 0 | 1 | 2 |
| New Castle | | | | | | | | | | | | | | | | | | |
| All Races | 55 | 78 | 60 | 68 | 68 | 60 | 70 | 57 | 58 | 74 | 58 | 48 | 49 | 54 | 62 | 48 | 37 | 44 |
| Non-Hispanic White | 26 | 27 | 25 | 23 | 22 | 19 | 25 | 13 | 17 | 24 | 16 | 12 | 14 | 19 | 16 | 11 | 9 | 8 |
| Non-Hispanic Black | 22 | 37 | 27 | 30 | 35 | 27 | 36 | 33 | 29 | 34 | 28 | 27 | 20 | 23 | 27 | 26 | 23 | 23 |
| Non-Hispanic Other | 3 | 1 | 0 | 2 | 2 | 0 | 0 | 5 | 3 | 9 | 6 | 1 | 6 | 4 | 7 | 3 | 0 | 5 |
| Wilmington | | | | | | | | | | | | | | | | | | |
| All Races | 12 | 18 | 12 | 18 | 16 | 17 | 19 | 18 | 18 | 17 | 20 | 14 | 14 | 10 | 18 | 15 | 13 | 13 |
| Non-Hispanic White | 1 | 1 | 1 | 1 | 1 | 1 | 2 | 0 | 1 | 2 | 4 | 0 | 3 | 2 | 0 | 1 | 1 | 2 |
| Non-Hispanic Black | 10 | 13 | 8 | 14 | 14 | 14 | 10 | 15 | 13 | 15 | 11 | 11 | 7 | 4 | 14 | 10 | 12 | 7 |
| Non-Hispanic Other | 0 | 0 | 0 | 0 | 0 | 0 | 0 | 2 | 0 | 0 | 1 | 0 | 1 | 1 | 2 | 2 | 0 | 0 |
| Balance of NC County | | | | | | | | | | | | | | | | | | |
| All Races | 43 | 60 | 48 | 50 | 52 | 43 | 51 | 39 | 40 | 57 | 38 | 34 | 35 | 44 | 44 | 33 | 24 | 31 |
| Non-Hispanic White | 25 | 26 | 24 | 22 | 21 | 18 | 23 | 13 | 16 | 22 | 12 | 12 | 11 | 17 | 16 | 10 | 8 | 6 |
| Non-Hispanic Black | 12 | 24 | 19 | 16 | 21 | 13 | 26 | 18 | 16 | 19 | 17 | 16 | 13 | 19 | 13 | 16 | 11 | 16 |
| Non-Hispanic Other | 3 | 1 | 0 | 2 | 2 | 0 | 0 | 3 | 3 | 9 | 5 | 1 | 5 | 3 | 5 | 1 | 0 | 5 |
| Sussex | | | | | | | | | | | | | | | | | | |
| All Races | 14 | 13 | 20 | 17 | 18 | 22 | 13 | 16 | 15 | 7 | 9 | 14 | 12 | 23 | 11 | 16 | 12 | 7 |
| Non-Hispanic White | 4 | 6 | 10 | 7 | 10 | 10 | 5 | 5 | 10 | 5 | 3 | 5 | 5 | 11 | 5 | 7 | 5 | 3 |
| Non-Hispanic Black | 8 | 5 | 9 | 9 | 4 | 7 | 6 | 7 | 3 | 1 | 5 | 5 | 5 | 6 | 4 | 4 | 3 | 3 |
| Non-Hispanic Other | 0 | 0 | 1 | 0 | 1 | 0 | 0 | 2 | 1 | 0 | 0 | 0 | 0 | 1 | 0 | 0 | 1 | 0 |

Notes:

1. *Based on NCHS estimate.
2. Infant deaths refer to deaths to children under one year of age.

Sources: National Center for Health Statistics

Delaware Department of Health and Social Services, Division of Public Health, Delaware Health Statistics Center

TABLE E-2. NUMBER OF NEONATAL DEATHS BY RACE, COUNTY, AND CITY OF WILMINGTON, U.S., DELAWARE, 2002-2019

| Area/ Race | 2002 | 2003 | 2004 | 2005 | 2006 | 2007 | 2008 | 2009 | 2010 | 2011 | 2012 | 2013 | 2014 | 2015 | 2016 | 2017 | 2018 | 2019 |
|-------------------------|-------|-------|-------|-------|-------|-------|-------|-------|-------|-------|-------|--------|-------|-------|-------|-------|------|------|
| U.S. | | | | | | | | | | | | | | | | | | |
| All Races | 18791 | 18935 | 18602 | 18782 | 19041 | 19094 | 18238 | 17261 | 16193 | 16065 | 15887 | 15893* | 15737 | 15672 | 15303 | 14844 | N/A | N/A |
| Non-Hispanic White | 8853 | 8797 | 8499 | 8452 | 8410 | 8329 | 7936 | 7515 | 7251 | 7103 | 7070 | 7119* | 6923 | 6724 | 6486 | 6191 | N/A | N/A |
| Non-Hispanic Black | 5399 | 5335 | 5283 | 5332 | 5525 | 5484 | 5159 | 4957 | 4395 | 4437 | 4354 | 4355* | 4361 | 4348 | 4323 | 4150 | N/A | N/A |
| Non-Hispanic Other | 856 | 861 | 851 | 895 | 885 | 982 | 916 | 909 | 867 | 893 | 912 | 869* | 869 | 937 | 925 | 924 | N/A | N/A |
| Delaware | | | | | | | | | | | | | | | | | | |
| All Races | 78 | 76 | 63 | 79 | 72 | 65 | 68 | 66 | 58 | 73 | 66 | 47 | 55 | 79 | 57 | 48 | 43 | 46 |
| Non-Hispanic White | 44 | 29 | 28 | 25 | 28 | 25 | 23 | 15 | 24 | 24 | 16 | 12 | 18 | 32 | 10 | 14 | 12 | 12 |
| Non-Hispanic Black | 28 | 36 | 28 | 39 | 33 | 28 | 35 | 39 | 25 | 35 | 34 | 25 | 20 | 31 | 27 | 22 | 23 | 20 |
| Non-Hispanic Other | 2 | 1 | 2 | 3 | 3 | 0 | 0 | 7 | 4 | 7 | 6 | 1 | 5 | 3 | 7 | 3 | 2 | 4 |
| Kent | | | | | | | | | | | | | | | | | | |
| All Races | 22 | 8 | 11 | 14 | 7 | 6 | 12 | 14 | 11 | 13 | 12 | 3 | 10 | 17 | 9 | 5 | 9 | 15 |
| Non-Hispanic White | 18 | 3 | 5 | 3 | 4 | 3 | 4 | 4 | 8 | 6 | 3 | 3 | 7 | 7 | 1 | 0 | 3 | 4 |
| Non-Hispanic Black | 4 | 4 | 5 | 10 | 3 | 3 | 5 | 10 | 2 | 3 | 8 | 0 | 2 | 6 | 5 | 5 | 5 | 8 |
| Non-Hispanic Other | 0 | 0 | 1 | 1 | 0 | 0 | 0 | 0 | 0 | 1 | 0 | 0 | 0 | 0 | 1 | 0 | 1 | 2 |
| New Castle | | | | | | | | | | | | | | | | | | |
| All Races | 46 | 57 | 39 | 54 | 52 | 43 | 48 | 42 | 36 | 57 | 47 | 34 | 37 | 49 | 43 | 36 | 27 | 28 |
| Non-Hispanic White | 22 | 22 | 16 | 17 | 15 | 14 | 16 | 9 | 8 | 16 | 12 | 6 | 7 | 17 | 7 | 11 | 6 | 7 |
| Non-Hispanic Black | 19 | 27 | 18 | 23 | 28 | 20 | 27 | 23 | 22 | 32 | 21 | 22 | 16 | 23 | 20 | 16 | 17 | 11 |
| Non-Hispanic Other | 2 | 1 | 0 | 2 | 2 | 0 | 0 | 5 | 3 | 6 | 6 | 1 | 5 | 3 | 6 | 3 | 0 | 2 |
| Wilmington | | | | | | | | | | | | | | | | | | |
| All Races | 9 | 11 | 9 | 15 | 12 | 10 | 10 | 14 | 10 | 14 | 18 | 11 | 12 | 10 | 15 | 9 | 9 | 6 |
| Non-Hispanic White | 1 | 0 | 1 | 1 | 0 | 1 | 0 | 0 | 0 | 1 | 4 | 0 | 3 | 2 | 0 | 1 | 1 | 2 |
| Non-Hispanic Black | 8 | 10 | 6 | 11 | 11 | 9 | 6 | 11 | 9 | 13 | 9 | 8 | 5 | 4 | 11 | 5 | 8 | 2 |
| Non-Hispanic Other | 0 | 0 | 0 | 0 | 0 | 0 | 0 | 2 | 0 | 0 | 1 | 0 | 1 | 1 | 2 | 2 | 0 | 0 |
| Balance of NC County | | | | | | | | | | | | | | | | | | |
| All Races | 37 | 46 | 30 | 39 | 40 | 33 | 38 | 28 | 26 | 43 | 29 | 23 | 25 | 39 | 28 | 27 | 18 | 22 |
| Non-Hispanic White | 21 | 22 | 15 | 16 | 15 | 13 | 16 | 9 | 8 | 15 | 8 | 6 | 4 | 15 | 7 | 10 | 5 | 5 |
| Non-Hispanic Black | 11 | 17 | 12 | 12 | 17 | 11 | 21 | 12 | 13 | 19 | 12 | 14 | 11 | 19 | 9 | 11 | 9 | 9 |
| Non-Hispanic Other | 2 | 1 | 0 | 2 | 2 | 0 | 0 | 3 | 3 | 6 | 5 | 1 | 4 | 2 | 4 | 1 | 0 | 2 |
| Sussex | | | | | | | | | | | | | | | | | | |
| All Races | 10 | 11 | 13 | 11 | 13 | 16 | 8 | 10 | 11 | 3 | 7 | 10 | 8 | 13 | 5 | 7 | 7 | 3 |
| Non-Hispanic White | 4 | 4 | 7 | 5 | 9 | 8 | 3 | 2 | 8 | 2 | 1 | 3 | 4 | 8 | 2 | 3 | 3 | 1 |
| Non-Hispanic Black | 5 | 5 | 5 | 6 | 2 | 5 | 3 | 6 | 1 | 0 | 5 | 3 | 2 | 2 | 2 | 1 | 1 | 1 |
| Non-Hispanic Other | 0 | 0 | 1 | 0 | 1 | 0 | 0 | 2 | 1 | 0 | 0 | 0 | 0 | 0 | 0 | 0 | 1 | 0 |

Notes:

1. *Based on NCHS estimate.
2. Neonatal deaths refer to deaths of children under 28 days of age.

Sources: National Center for Health Statistics,
Delaware Department of Health and Social Services, Division of Public Health, Delaware Health Statistics Center

TABLE E-3. NUMBER OF POSTNEONATAL DEATHS BY RACE, COUNTY, AND CITY OF WILMINGTON, U.S., DELAWARE 2002-2019

| Area/ Race | 2002 | 2003 | 2004 | 2005 | 2006 | 2007 | 2008 | 2009 | 2010 | 2011 | 2012 | 2013 | 2014 | 2015 | 2016 | 2017 | 2018 | 2019 |
|-------------------------|------|------|------|------|------|-------|------|------|------|------|------|-------|------|------|------|------|------|------|
| U.S. | | | | | | | | | | | | | | | | | | |
| All Races | 9179 | 9060 | 9258 | 9602 | 9468 | 10059 | 9837 | 9147 | 8379 | 7936 | 7767 | 7553* | 7474 | 7786 | 7854 | 7497 | N/A | N/A |
| Non-Hispanic White | 4474 | 4431 | 4502 | 4682 | 4474 | 4676 | 4573 | 4270 | 3941 | 3783 | 3689 | 3647* | 3592 | 3720 | 3718 | 3329 | N/A | N/A |
| Non-Hispanic Black | 2632 | 2501 | 2586 | 2626 | 2716 | 2867 | 2735 | 2603 | 2363 | 2233 | 2174 | 2133* | 2074 | 2276 | 2222 | 2240 | N/A | N/A |
| Non-Hispanic Other | 433 | 470 | 483 | 485 | 483 | 534 | 536 | 488 | 457 | 445 | 451 | 411* | 404 | 464 | 455 | 478 | N/A | N/A |
| Delaware | | | | | | | | | | | | | | | | | | |
| All Races | 18 | 31 | 34 | 27 | 27 | 26 | 33 | 25 | 30 | 25 | 18 | 21 | 19 | 21 | 30 | 24 | 19 | 22 |
| Non-Hispanic White | 8 | 12 | 15 | 11 | 11 | 8 | 14 | 9 | 14 | 15 | 8 | 10 | 9 | 6 | 13 | 4 | 7 | 4 |
| Non-Hispanic Black | 7 | 13 | 16 | 14 | 11 | 10 | 14 | 13 | 10 | 3 | 9 | 8 | 9 | 7 | 12 | 15 | 10 | 15 |
| Non-Hispanic Other | 1 | 0 | 0 | 0 | 1 | 1 | 0 | 0 | 0 | 3 | 0 | 0 | 1 | 3 | 1 | 0 | 0 | 3 |
| Kent | | | | | | | | | | | | | | | | | | |
| All Races | 5 | 8 | 6 | 7 | 6 | 3 | 6 | 4 | 4 | 4 | 5 | 3 | 3 | 6 | 5 | 3 | 4 | 2 |
| Non-Hispanic White | 4 | 5 | 3 | 3 | 3 | 1 | 3 | 2 | 3 | 4 | 2 | 2 | 1 | 1 | 1 | 0 | 2 | 1 |
| Non-Hispanic Black | 1 | 3 | 3 | 4 | 2 | 1 | 2 | 2 | 1 | 0 | 2 | 1 | 2 | 3 | 3 | 2 | 2 | 1 |
| Non-Hispanic Other | 0 | 0 | 0 | 0 | 1 | 1 | 0 | 0 | 0 | 0 | 0 | 0 | 0 | 1 | 0 | 0 | 0 | 0 |
| New Castle | | | | | | | | | | | | | | | | | | |
| All Races | 9 | 21 | 21 | 14 | 16 | 17 | 22 | 15 | 22 | 17 | 11 | 14 | 12 | 5 | 19 | 12 | 10 | 16 |
| Non-Hispanic White | 4 | 5 | 9 | 6 | 7 | 5 | 9 | 4 | 9 | 8 | 4 | 6 | 7 | 2 | 9 | 0 | 3 | 1 |
| Non-Hispanic Black | 3 | 10 | 9 | 7 | 7 | 7 | 9 | 10 | 7 | 2 | 7 | 5 | 4 | 0 | 7 | 10 | 6 | 12 |
| Non-Hispanic Other | 1 | 0 | 0 | 0 | 0 | 0 | 0 | 0 | 0 | 3 | 0 | 0 | 1 | 1 | 1 | 0 | 0 | 3 |
| Wilmington | | | | | | | | | | | | | | | | | | |
| All Races | 3 | 7 | 3 | 3 | 4 | 7 | 9 | 4 | 8 | 3 | 2 | 3 | 2 | 0 | 3 | 6 | 4 | 7 |
| Non-Hispanic White | 0 | 1 | 0 | 0 | 1 | 0 | 2 | 0 | 1 | 1 | 0 | 0 | 0 | 0 | 0 | 0 | 0 | 0 |
| Non-Hispanic Black | 2 | 3 | 2 | 3 | 3 | 5 | 4 | 4 | 4 | 2 | 2 | 3 | 2 | 0 | 3 | 5 | 4 | 5 |
| Non-Hispanic Other | 0 | 0 | 0 | 0 | 0 | 0 | 0 | 0 | 0 | 0 | 0 | 0 | 0 | 0 | 0 | 0 | 0 | 0 |
| Balance of NC County | | | | | | | | | | | | | | | | | | |
| All Races | 6 | 14 | 18 | 11 | 12 | 10 | 13 | 11 | 14 | 14 | 9 | 11 | 10 | 5 | 16 | 6 | 6 | 9 |
| Non-Hispanic White | 4 | 4 | 9 | 6 | 6 | 5 | 7 | 4 | 8 | 7 | 4 | 6 | 7 | 2 | 9 | 0 | 3 | 1 |
| Non-Hispanic Black | 1 | 7 | 7 | 4 | 4 | 2 | 5 | 6 | 3 | 0 | 5 | 2 | 2 | 0 | 4 | 5 | 2 | 7 |
| Non-Hispanic Other | 1 | 0 | 0 | 0 | 0 | 0 | 0 | 0 | 0 | 3 | 0 | 0 | 1 | 1 | 1 | 0 | 0 | 1 |
| Sussex | | | | | | | | | | | | | | | | | | |
| All Races | 4 | 2 | 7 | 6 | 5 | 6 | 5 | 6 | 4 | 4 | 2 | 4 | 4 | 10 | 6 | 9 | 5 | 4 |
| Non-Hispanic White | 0 | 2 | 3 | 2 | 1 | 2 | 2 | 3 | 2 | 3 | 2 | 2 | 1 | 3 | 3 | 4 | 2 | 2 |
| Non-Hispanic Black | 3 | 0 | 4 | 3 | 2 | 2 | 3 | 1 | 2 | 1 | 0 | 2 | 3 | 4 | 2 | 3 | 2 | 2 |
| Non-Hispanic Other | 0 | 0 | 0 | 0 | 0 | 0 | 0 | 0 | 0 | 0 | 0 | 0 | 0 | 1 | 0 | 0 | 0 | 0 |

Notes:
 1. *Based on NCHS estimate.
 2. Postneonatal deaths refer to deaths of children 28 to 364 days of age.

Sources: National Center for Health Statistics
 Delaware Department of Health and Social Services, Division of Public Health, Delaware Health Statistics Center

TABLE E- 4. FIVE-YEAR AVERAGE INFANT MORTALITY RATES BY RACE, COUNTY, AND CITY OF WILMINGTON, U.S., DELAWARE 2002-2019

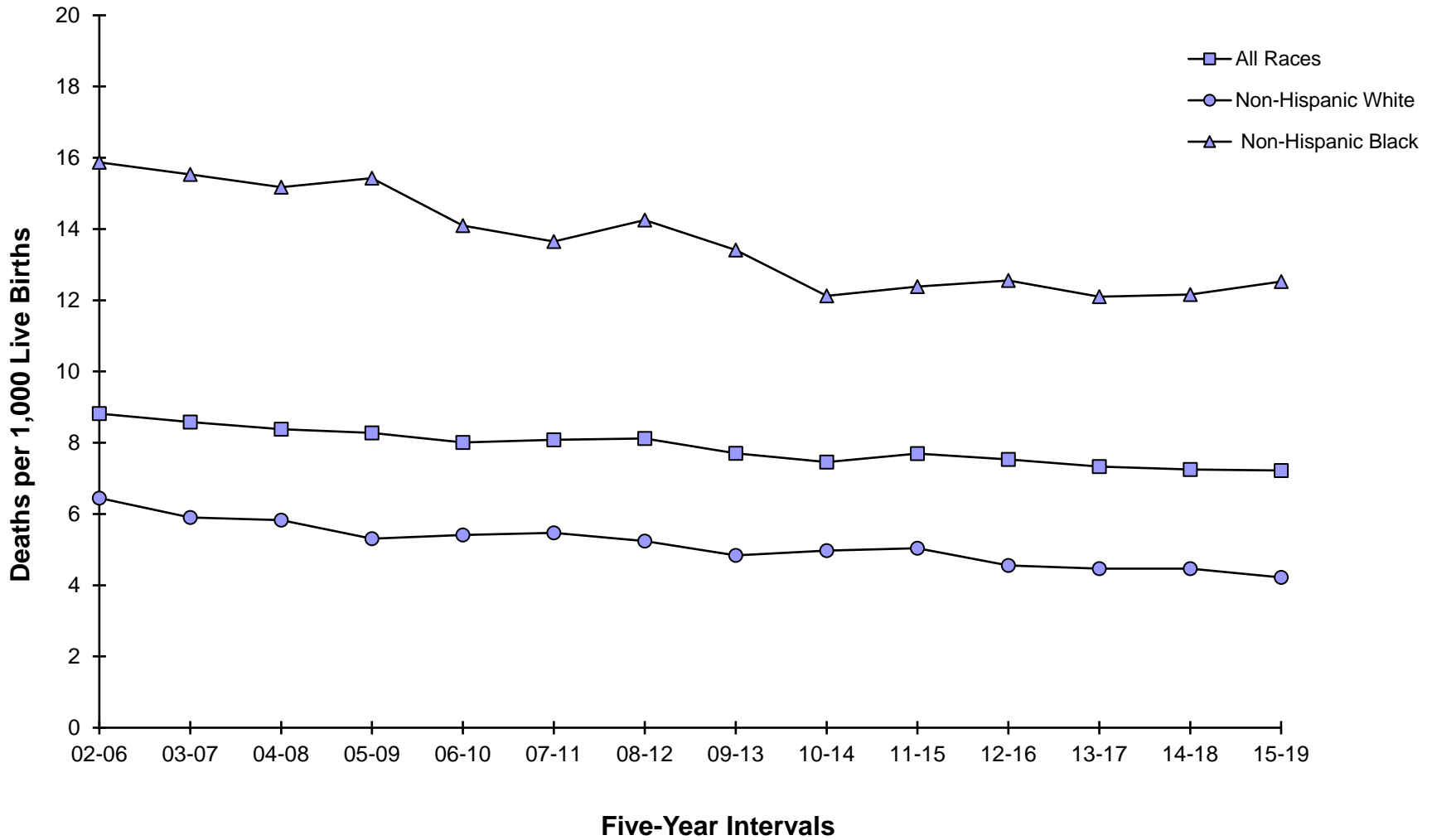
| Area/ Race | 2002 -2006 | 2003 -2007 | 2004 -2008 | 2005 -2009 | 2006 -2010 | 2007 -2011 | 2008 -2012 | 2009 -2013 | 2010 -2014 | 2011 -2015 | 2012 -2016 | 2013 -2017 | 2014 -2018 | 2015 -2019 |
|-----------------------------|---------------|---------------|---------------|---------------|---------------|---------------|---------------|---------------|---------------|---------------|---------------|---------------|---------------|---------------|
| U.S. | | | | | | | | | | | | | | |
| All Races | 6.8 | 6.8 | 6.7 | 6.7 | 6.5 | 6.4 | 6.2 | 6.1 | 6.0 | 5.9 | 5.9 | 5.9 | N/A | N/A |
| Non-Hispanic White | 5.7 | 5.7 | 5.6 | 5.6 | 5.4 | 5.3 | 5.2 | 5.1 | 5.0 | 5.0 | 5.0 | 4.9 | N/A | N/A |
| Non-Hispanic Black | 13.6 | 13.5 | 13.3 | 13.1 | 12.7 | 12.3 | 11.8 | 11.5 | 11.2 | 11.2 | 11.1 | 11.1 | N/A | N/A |
| Delaware | | | | | | | | | | | | | | |
| All Races | 8.8+ | 8.6+ | 8.4+ | 8.3+ | 8.0+ | 8.1+ | 8.1+ | 7.7+ | 7.5+ | 7.7+ | 7.5+ | 7.3+ | 7.3 | 7.2 |
| Non-Hispanic White | 6.4 | 5.9 | 5.8 | 5.3 | 5.4 | 5.5 | 5.2 | 4.8 | 5.0 | 5.0 | 4.6 | 4.5 | 4.5 | 4.2 |
| Non-Hispanic Black | 15.9+ | 15.5 | 15.2 | 15.4+ | 14.1 | 13.6 | 14.3+ | 13.4 | 12.1 | 12.4 | 12.6 | 12.1 | 12.2 | 12.5 |
| Kent | | | | | | | | | | | | | | |
| All Races | 9.1 | 7.1 | 7.1 | 7.1 | 6.5 | 6.9 | 7.6 | 6.6 | 6.2 | 6.9 | 6.5 | 5.8 | 6.4 | 6.9 |
| Non-Hispanic White | 7.6 | 4.8 | 4.6 | 4.3 | 5.0 | 5.5 | 5.6 | 5.5 | 5.8 | 5.4 | 4.2 | 3.6 | 3.6 | 3.3 |
| Non-Hispanic Black | 14.8 | 13.6 | 13.3 | 14.2 | 10.2 | 9.5 | 11.6 | 9.6 | 7.0 | 8.9 | 10.3 | 9.1 | 11.0 | 12.4 |
| New Castle | | | | | | | | | | | | | | |
| All Races | 9.2 | 9.2 | 9.0 | 9.0 | 8.8 | 9.1 | 9.3 | 8.8 | 8.7 | 8.6 | 8.4 | 8.1 | 7.8 | 7.8 |
| Non-Hispanic White | 6.2 | 6.0 | 6.1 | 5.6 | 5.3 | 5.5 | 5.4 | 4.8 | 4.9 | 5.1 | 4.8 | 4.6 | 4.6 | 4.3 |
| Non-Hispanic Black | 16.0 | 16.1 | 15.6 | 15.9 | 15.6 | 15.5 | 15.9 | 15.3 | 14.3 | 13.8 | 13.3 | 13.2 | 12.8 | 13.1 |
| Wilmington | | | | | | | | | | | | | | |
| All Races | 12.3 | 13.0 | 13.0 | 13.8 | 14.1 | 14.8 | 16.1 | 15.9 | 15.8 | 14.6 | 15.1 | 14.3 | 14.5 | 14.8 |
| Non-Hispanic White | --- | --- | --- | --- | --- | --- | --- | --- | --- | --- | --- | --- | --- | --- |
| Non-Hispanic Black | 15.9 | 16.9 | 15.7 | 17.1 | 17.4 | 18.5 | 18.7 | 20.2 | 19.2 | 16.3 | 16.4 | 16.3 | 16.9 | 17.1 |
| Balance of NC County | | | | | | | | | | | | | | |
| All Races | 8.5 | 8.5 | 8.2 | 8.0 | 7.7 | 7.9 | 7.9 | 7.5 | 7.3 | 7.5 | 7.1 | 7.0 | 6.6 | 6.5 |
| Non-Hispanic White | 6.4 | 6.2 | 6.1 | 5.7 | 5.5 | 5.6 | 5.4 | 4.8 | 4.7 | 4.9 | 4.6 | 4.6 | 4.4 | 4.2 |
| Non-Hispanic Black | 16.0 | 15.6 | 15.5 | 15.1 | 14.5 | 13.8 | 14.4 | 12.9 | 12.2 | 12.6 | 11.9 | 11.8 | 11.1 | 11.4 |
| Sussex | | | | | | | | | | | | | | |
| All Races | 7.5 | 7.9 | 7.6 | 7.2 | 7.0 | 6.2 | 5.2 | 5.4 | 5.1 | 5.8 | 6.1 | 6.7 | 6.5 | 6.0 |
| Non-Hispanic White | 5.9 | 6.7 | 6.4 | 5.6 | 6.0 | 5.4 | 4.3 | 4.3 | 4.3 | 4.5 | 4.4 | 5.1 | 5.1 | 4.8 |
| Non-Hispanic Black | 16.7 | 15.4 | 15.8 | 15.0 | 12.4 | 11.0 | 10.4 | 10.0 | --- | 11.0 | 12.5 | 11.9 | 11.0 | 10.1 |

Notes:

1. U.S. data are based on NCHS estimates.
2. Infant mortality rates represent the number of deaths of children under one year of age per 1000 live births.
3. '+' indicates that the Delaware rate is significantly higher than the U.S. rate.
'-' indicates that the Delaware rate is significantly lower than the U.S. rate.
4. '---' Indicates rate does not meet standard of reliability or precision; based on fewer than 20 deaths in the numerator.
5. No statistical comparisons were made between the county rates and the U.S. rate due to small numbers. See Appendix C for details.

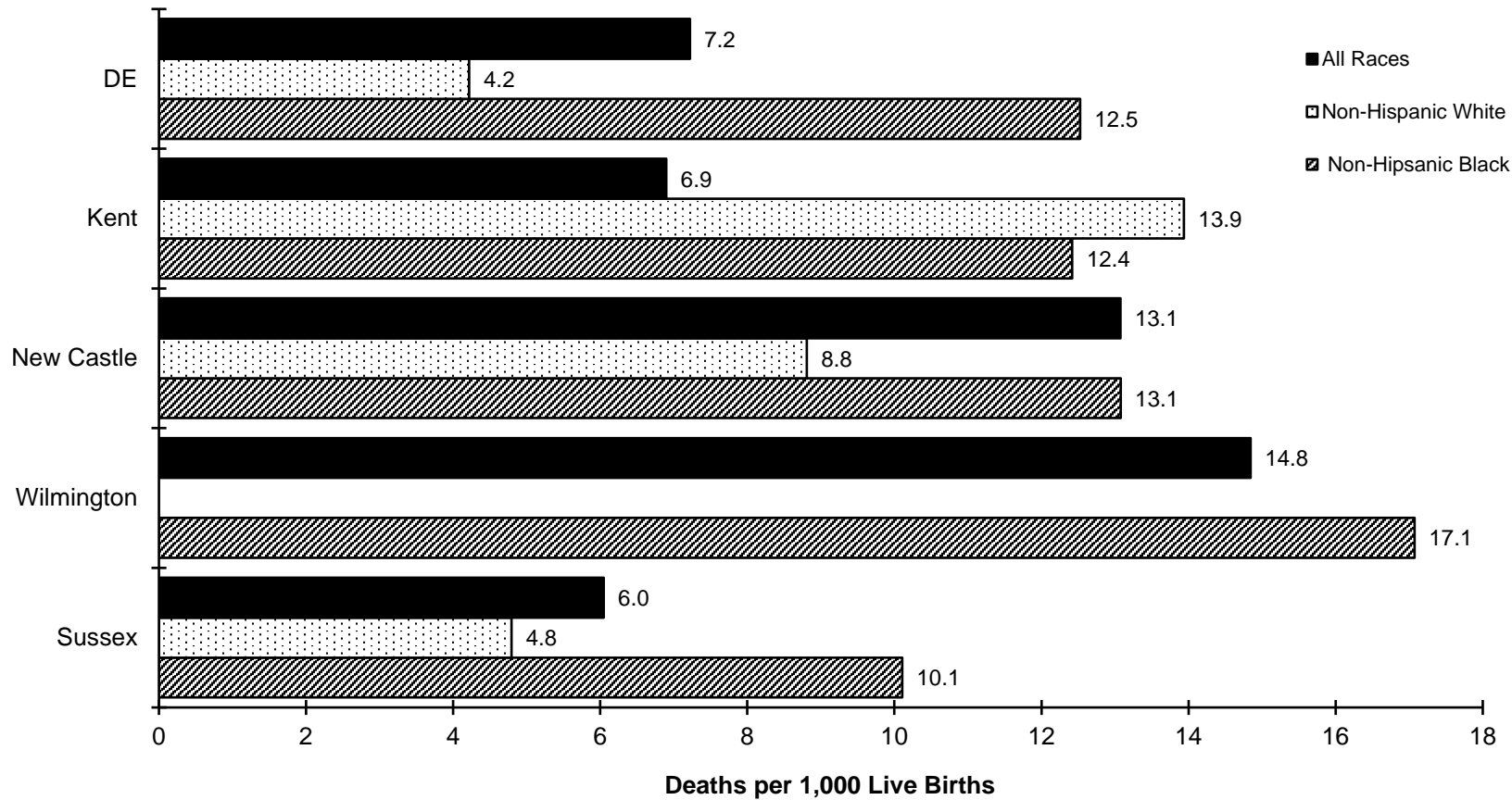
*Sources: National Center for Health Statistics,
Delaware Department of Health and Social Services, Division of Public Health, Delaware Health Statistics Center*

Figure E-1. Five-Year Average Infant Mortality Rates by Race, Delaware, 2002-2019



Source: Delaware Department of Health and Social Services, Division of Public Health, Delaware Health Statistics Center

Figure E-2. Five-Year Average Infant Mortality Rates by Race, Delaware, Counties and the City of Wilmington, 2015-2019



Source: Delaware Department of Health and Social Services, Division of Public Health, Delaware Health Statistics Center

TABLE E-5. FIVE-YEAR AVERAGE NEONATAL MORTALITY RATES BY RACE, COUNTY, AND CITY OF WILMINGTON, U.S., DELAWARE 2002-2019

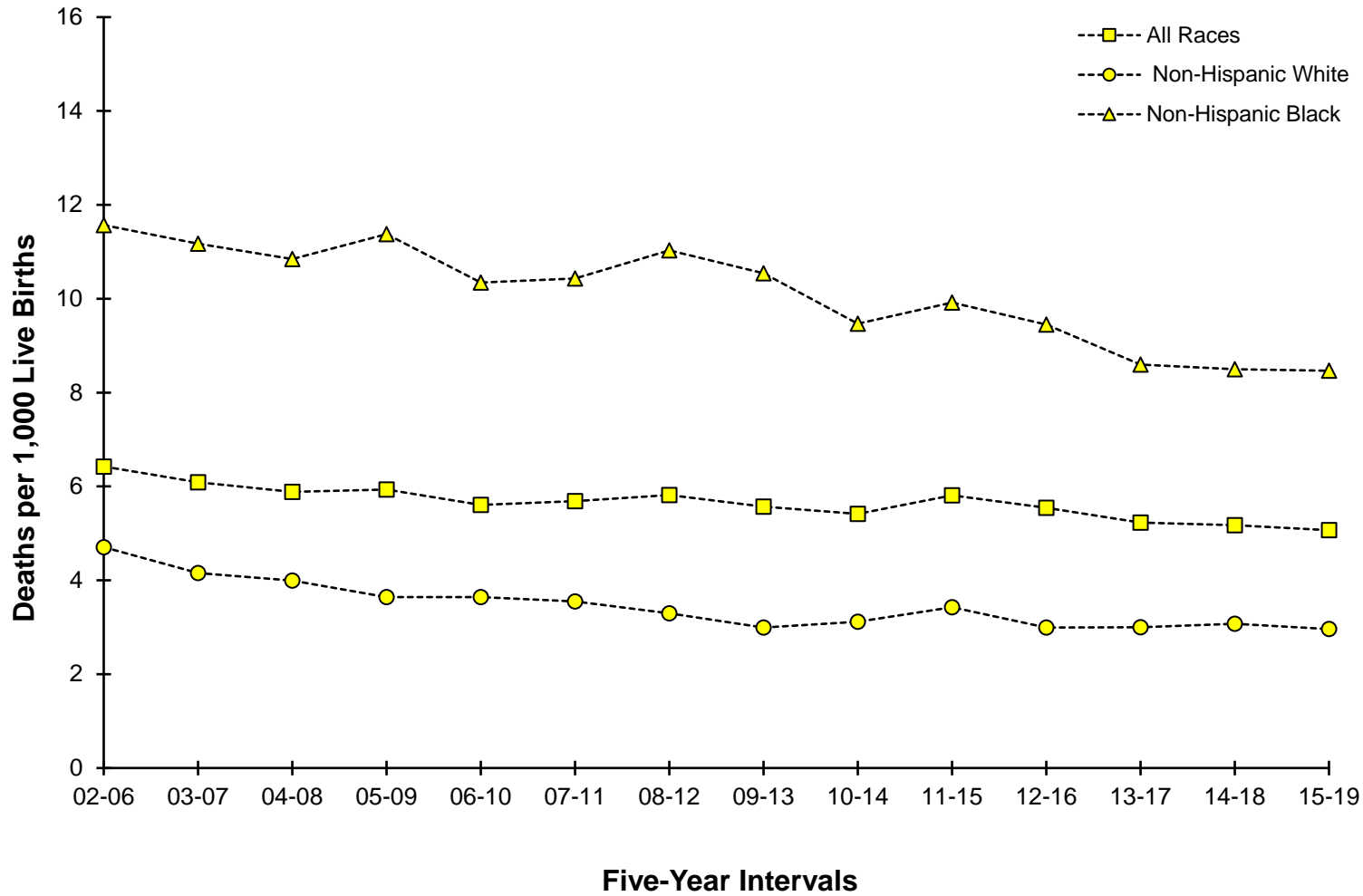
| Area/ Race | 2002 -2006 | 2003 -2007 | 2004 -2008 | 2005 -2009 | 2006 -2010 | 2007 -2011 | 2008 -2012 | 2009 -2013 | 2010 -2014 | 2011 -2015 | 2012 -2016 | 2013 -2017 | 2014 -2018 | 2015 -2019 |
|-------------------------|---------------|---------------|---------------|---------------|---------------|---------------|---------------|---------------|---------------|---------------|---------------|---------------|---------------|---------------|
| U.S. | | | | | | | | | | | | | | |
| All Races | 4.6 | 4.5 | 4.4 | 4.4 | 4.3 | 4.2 | 4.1 | 4.1 | 4.0 | 4.0 | 4.0 | 3.9 | N/A | N/A |
| Non-Hispanic White | 3.7 | 3.7 | 3.6 | 3.6 | 3.5 | 3.4 | 3.4 | 3.3 | 3.3 | 3.3 | 3.2 | 3.2 | N/A | N/A |
| Non-Hispanic Black | 9.2 | 9.0 | 8.8 | 8.6 | 8.3 | 8.1 | 7.8 | 7.6 | 7.5 | 7.5 | 7.4 | 7.3 | N/A | N/A |
| Delaware | | | | | | | | | | | | | | |
| All Races | 6.4+ | 6.1+ | 5.9+ | 5.9+ | 5.6+ | 5.7+ | 5.8+ | 5.6+ | 5.4+ | 5.8+ | 5.5+ | 5.2+ | 5.2 | 5.1 |
| Non-Hispanic White | 4.7+ | 4.2 | 4.0 | 3.6 | 3.6 | 3.5 | 3.3 | 3.0 | 3.1 | 3.4 | 3.0 | 3.0 | 3.1 | 3 |
| Non-Hispanic Black | 11.6+ | 11.2+ | 10.8+ | 11.4+ | 10.3+ | 10.4+ | 11.0+ | 10.5+ | 9.5+ | 9.9+ | 9.5+ | 8.6 | 8.5 | 8.5 |
| Kent | | | | | | | | | | | | | | |
| All Races | 6.0 | 4.3 | 4.6 | 4.7 | 4.4 | 5.0 | 5.6 | 4.8 | 4.4 | 5.0 | 4.6 | 4.0 | 4.5 | 5.1 |
| Non-Hispanic White | 4.9 | --- | --- | --- | 3.3 | 3.6 | 3.6 | 3.5 | 4.0 | 3.9 | 3.2 | --- | --- | --- |
| Non-Hispanic Black | 9.9 | 9.0 | 9.1 | 10.5 | 7.6 | 7.5 | 9.3 | 7.6 | --- | --- | 6.8 | --- | 7.2 | 9.0 |
| New Castle | | | | | | | | | | | | | | |
| All Races | 6.9 | 6.8 | 6.5 | 6.7 | 6.2 | 6.4 | 6.7 | 6.5 | 6.4 | 6.8 | 6.5 | 6.2 | 6.0 | 5.8 |
| Non-Hispanic White | 4.7 | 4.4 | 4.1 | 3.9 | 3.5 | 3.5 | 3.5 | 3.0 | 2.9 | 3.5 | 3.0 | 3.1 | 3.2 | 3.3 |
| Non-Hispanic Black | 12.2 | 12.0 | 11.7 | 11.9 | 11.7 | 12.1 | 12.4 | 12.1 | 11.7 | 11.9 | 10.9 | 10.4 | 9.9 | 9.3 |
| Wilmington | | | | | | | | | | | | | | |
| All Races | 9.1 | 9.2 | 8.9 | 9.6 | 9.0 | 9.7 | 11.6 | 12.2 | 12.4 | 12.6 | 13.2 | 11.4 | 11.4 | 10.5 |
| Non-Hispanic White | --- | --- | --- | --- | --- | --- | --- | --- | --- | --- | --- | --- | --- | --- |
| Non-Hispanic Black | 12.4 | 12.6 | 11.2 | 12.3 | 12.1 | 13.2 | 14.0 | 15.6 | 14.8 | 13.3 | 12.9 | 11.7 | 11.9 | 10.9 |
| Balance of NC County | | | | | | | | | | | | | | |
| All Races | 6.5 | 6.3 | 6.0 | 6.0 | 5.6 | 5.8 | 5.8 | 5.3 | 5.3 | 5.7 | 5.3 | 5.2 | 5.0 | 5.0 |
| Non-Hispanic White | 4.8 | 4.5 | 4.3 | 4.1 | 3.7 | 3.7 | 3.5 | 2.9 | 2.6 | 3.2 | 2.7 | 2.9 | 2.9 | 3.1 |
| Non-Hispanic Black | 12.0 | 11.6 | 11.9 | 11.7 | 11.4 | 11.4 | 11.6 | 10.5 | 10.4 | 11.3 | 9.9 | 9.8 | 9.1 | 8.7 |
| Sussex | | | | | | | | | | | | | | |
| All Races | 5.3 | 5.6 | 5.2 | 4.9 | 4.9 | 4.1 | 3.4 | 3.6 | 3.5 | 3.7 | 3.8 | 3.8 | 3.5 | 3.1 |
| Non-Hispanic White | 4.6 | 5.1 | 4.9 | 4.1 | 4.5 | 3.5 | --- | --- | --- | --- | --- | 3.1 | 3.1 | --- |
| Non-Hispanic Black | 10.9 | 10.4 | 9.5 | 10.0 | --- | --- | --- | --- | --- | --- | --- | --- | --- | --- |

Notes:

1. 2006-2010 U.S. data are based on NCHS estimates.
2. Neonatal mortality rates represent the number of deaths of children under 28 days of age per 1000 live births.
3. '+' indicates that the Delaware rate is significantly higher than the U.S. rate.
4. '---' indicates rate does not meet standard of reliability or precision; based on fewer than 20 deaths in the numerator.
5. No statistical comparisons were made between the county rates and the U.S. rate due to small numbers. See Appendix C for details.

*Sources: National Center for Health Statistics
Delaware Department of Health and Social Services, Division of Public Health, Delaware Health Statistics Center*

Figure E-3. Five-Year Average Neonatal Mortality Rates by Race, Delaware, 2002-2019



Source: Delaware Department of Health and Social Services, Division of Public Health, Delaware Health Statistics Center

TABLE E-6. FIVE-YEAR AVERAGE POSTNEONATAL MORTALITY RATES BY RACE, COUNTY, AND CITY OF WILMINGTON, U.S., DELAWARE, 2002-2019

| Area/ Race | 2002 -2006 | 2003 -2007 | 2004 -2008 | 2005 -2009 | 2006 -2010 | 2007 -2011 | 2008 -2012 | 2009 -2013 | 2010 -2014 | 2011 -2015 | 2012 -2016 | 2013 -2017 | 2014 -2018 | 2015 -2019 |
|-------------------------|---------------|---------------|---------------|---------------|---------------|---------------|---------------|---------------|---------------|---------------|---------------|---------------|---------------|---------------|
| U.S. | | | | | | | | | | | | | | |
| All Races | 2.3 | 2.3 | 2.3 | 2.3 | 2.2 | 2.2 | 2.1 | 2.0 | 2.0 | 1.9 | 1.9 | 1.9 | N/A | N/A |
| Non-Hispanic White | 2.0 | 2.0 | 2.0 | 2.0 | 1.9 | 1.9 | 1.9 | 1.8 | 1.7 | 1.7 | 1.7 | 1.7 | N/A | N/A |
| Non-Hispanic Black | 4.5 | 4.5 | 4.5 | 4.4 | 4.3 | 4.2 | 4.1 | 3.9 | 3.7 | 3.7 | 3.7 | 3.7 | N/A | N/A |
| Delaware | | | | | | | | | | | | | | |
| All Races | 2.4 | 2.5 | 2.5 | 2.3 | 2.4 | 2.4 | 2.3 | 2.1 | 2.0 | 1.9 | 2.0 | 2.1 | 2.1 | 2.2 |
| White Non-Hispanic | 1.7 | 1.8 | 1.8 | 1.7 | 1.8 | 1.9 | 1.9 | 1.8 | 1.9 | 1.6 | 1.6 | 1.5 | 1.4 | 1.3 |
| Black Non-Hispanic | 4.3 | 4.4 | 4.3 | 4.1 | 3.7 | 3.2- | 3.2 | 2.9- | 2.7- | 2.5- | 3.1 | 3.5 | 3.7 | 4.1 |
| Kent | | | | | | | | | | | | | | |
| All Races | 3.1 | 2.8 | 2.6 | 2.3 | 2.0 | 1.9 | 2.1 | 1.8 | --- | 1.9 | 2.0 | 1.8 | 1.9 | 1.8 |
| Non-Hispanic White | --- | --- | --- | --- | --- | --- | --- | --- | --- | --- | --- | --- | --- | --- |
| Non-Hispanic Black | --- | --- | --- | --- | --- | --- | --- | --- | --- | --- | --- | --- | --- | --- |
| New Castle | | | | | | | | | | | | | | |
| All Races | 2.3 | 2.5 | 2.5 | 2.3 | 2.6 | 2.7 | 2.5 | 2.4 | 2.3 | 1.8 | 1.9 | 1.9 | 1.8 | 2.0 |
| Non-Hispanic White | 1.6 | 1.7 | 1.9 | 1.7 | 1.9 | 2.0 | 2.0 | 1.8 | 2.0 | 1.6 | 1.7 | 1.5 | 1.4 | --- |
| Non-Hispanic Black | 3.8 | 4.1 | 3.9 | 3.9 | 3.9 | 3.4 | 3.5 | 3.1 | 2.6 | --- | 2.4 | 2.8 | 2.9 | 3.8 |
| Wilmington | | | | | | | | | | | | | | |
| All Races | 3.2 | 3.9 | 4.1 | 4.2 | 5.1 | 5.2 | 4.6 | 3.7 | --- | --- | --- | --- | --- | 4.3 |
| Non-Hispanic White | --- | --- | --- | --- | --- | --- | --- | --- | --- | --- | --- | --- | --- | --- |
| Non-Hispanic Black | --- | --- | --- | --- | 5.3 | --- | --- | --- | --- | --- | --- | --- | --- | --- |
| Balance of NC County | | | | | | | | | | | | | | |
| All Races | 2.1 | 2.2 | 2.1 | 1.9 | 2.1 | 2.1 | 2.1 | 2.1 | 2.1 | 1.8 | 1.9 | 1.8 | 1.6 | 1.6 |
| Non-Hispanic White | 1.6 | 1.7 | 1.9 | 1.6 | 1.8 | 1.9 | 1.9 | 1.8 | 2.1 | 1.7 | 1.9 | 1.7 | 1.5 | --- |
| Non-Hispanic Black | 4.0 | 4.0 | 3.6 | 3.4 | 3.1 | --- | --- | --- | --- | --- | --- | --- | --- | --- |
| Sussex | | | | | | | | | | | | | | |
| All Races | 2.2 | 2.3 | 2.4 | 2.3 | 2.2 | 2.1 | 1.8 | 1.8 | --- | 2.1 | 2.3 | 2.9 | 3.0 | 3.0 |
| Non-Hispanic White | --- | --- | --- | --- | --- | --- | --- | --- | --- | --- | --- | --- | --- | --- |
| Non-Hispanic Black | --- | --- | --- | --- | --- | --- | --- | --- | --- | --- | --- | --- | --- | --- |

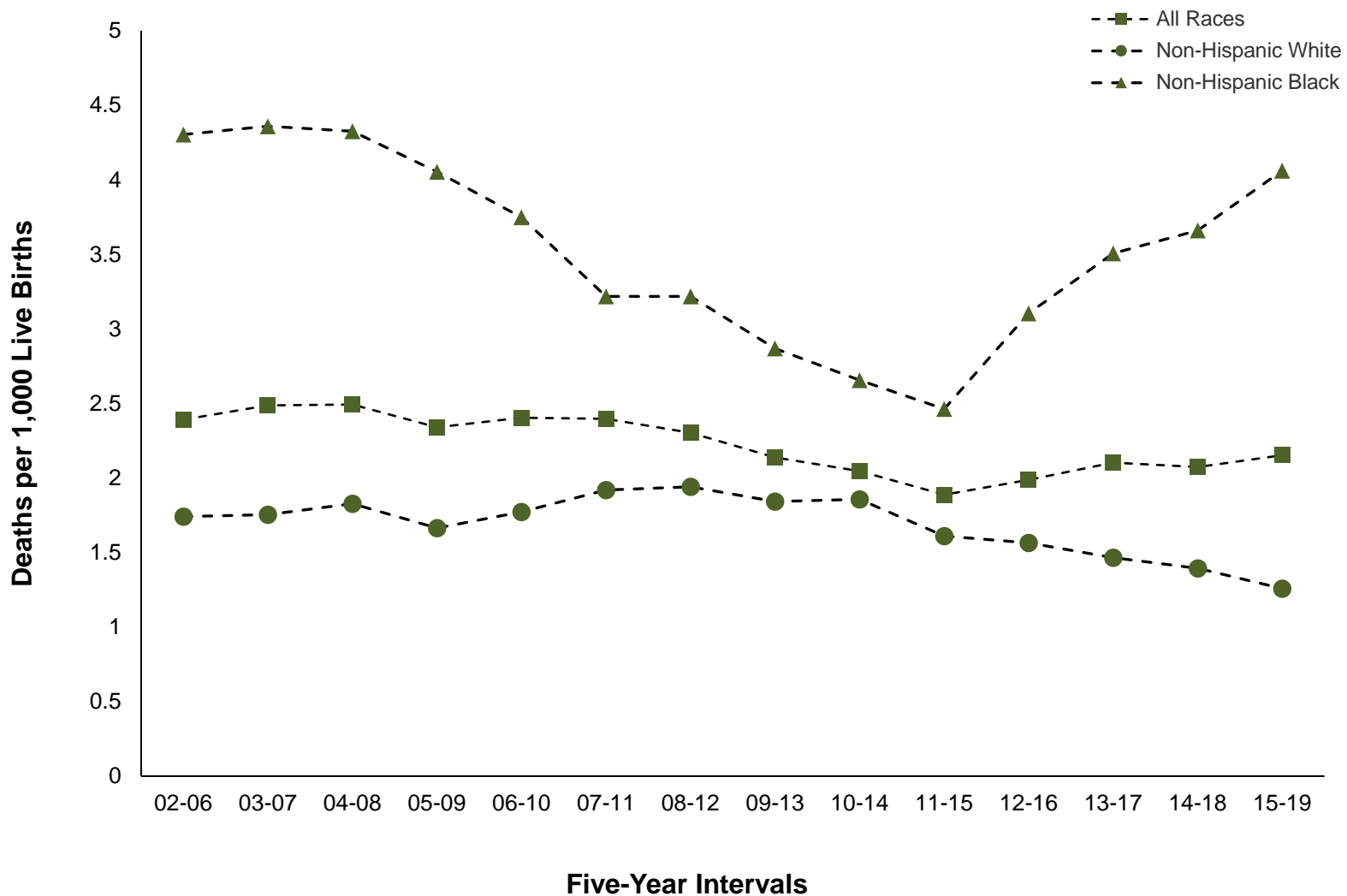
Notes:

1. 2006-2010 U.S. data are based on NCHS estimates.
2. Postneonatal mortality rates represent the number of deaths of children 28 to 364 days of age per 1000 live births.
3. '-' indicates that the Delaware rate is significantly lower than the U.S. rate.
4. "----" indicates rate does not meet standard of reliability or precision; based on fewer than 20 deaths in the numerator.
5. No statistical comparisons were made between the county rates and the U.S. rate due to small numbers. See Appendix C for details.

Sources: National Center for Health Statistics

Delaware Department of Health and Social Services, Division of Public Health, Delaware Health Statistics Center

Figure E-4. Five-Year Average Postneonatal Mortality Rates by Race, Delaware, 2002-2019



Source: Delaware Department of Health and Social Services, Division of Public Health, Delaware Health Statistics Center

TABLE E-7. FIVE-YEAR AVERAGE INFANT MORTALITY RATES BY SELECTED RISK MARKERS AND RACE OF MOTHER, DELAWARE, 2014-2018 LIVE BIRTH COHORT

| Risk Factor | Non-Hispanic | | |
|---------------------------------------|--------------|-------|-------|
| | All | White | Black |
| Birth Weight of Child | | | |
| <2500 | 57.7 | 43.6 | 69.0 |
| <1500 | 254.0 | 229.6 | 257.8 |
| 1500-2499 | 10.5 | --- | --- |
| 2500+ | 2.0 | 1.9 | 2.9 |
| Age of Mother | | | |
| <20 | 7.8 | --- | --- |
| 20-24 | 8.5 | 5.7 | 13.7 |
| 25-29 | 7.1 | 4.6 | 11.7 |
| 30+ | 6.3 | 4.2 | 11.6 |
| Marital Status of Mother | | | |
| Married | 4.6 | 3.6 | 9.1 |
| Single | 9.7 | 7.3 | 13.0 |
| Education of Mother | | | |
| <12 years | 8.2 | 7.5 | 11.0 |
| H.S. diploma | 9.9 | 7.2 | 14.6 |
| 1+ years college | 5.2 | 3.7 | 9.4 |
| Interval Since Last Live Birth | | | |
| <18 months | 11.3 | --- | --- |
| 18+ months | 4.9 | 3.4 | 8.9 |

Notes:

1. Infant mortality rates represent the number of deaths to children under one year of age per 1,000 live births.

Source: Delaware Department of Health and Social Services, Division of Public Health, Delaware Health Statistics Center

TABLE E-8. LEADING CAUSES OF INFANT DEATH BY GESTATIONAL AGE CATEGORY, DELAWARE, 2014-2018 LIVE BIRTH COHORT

| Leading causes of death | Gestational Age Category | | | | | % Born Very Preterm | % Born Preterm |
|---|--------------------------|--------------------|-----------|----------|------------|---------------------|----------------|
| | Very preterm | Moderately preterm | Term | Unknown | Total | | |
| Disorders related to short gestation and low birth weight, not elsewhere | 75 | 0 | 1 | 0 | 76 | 98.7 | 98.7 |
| Newborn affected by maternal complications of pregnancy | 42 | 2 | 1 | 0 | 45 | 93.3 | 97.8 |
| Newborn affected by complications of placenta, cord, and membranes | 15 | 0 | 0 | 0 | 15 | 100.0 | 100.0 |
| Congenital malformations, deformations, and chromosomal abnormalities | 15 | 14 | 29 | 0 | 58 | 25.9 | 50.0 |
| Respiratory distress of newborn | 14 | 0 | 0 | 0 | 14 | 100.0 | 100.0 |
| Bacterial sepsis of newborn | 8 | 1 | 2 | 0 | 11 | 72.7 | 81.8 |
| Diarrhea and gastroenteritis of infectious origin | 7 | 0 | 0 | 0 | 7 | 100.0 | 100.0 |
| Necrotizing enterocolitis of newborn | 5 | 1 | 1 | 0 | 7 | 71.4 | 85.7 |
| Septicemia | 3 | 0 | 1 | 0 | 4 | 75.0 | 75.0 |
| Intrauterine hypoxia and birth asphyxia | 3 | 1 | 2 | 0 | 6 | 50.0 | 66.7 |
| Atelectasis | 3 | 0 | 0 | 0 | 3 | 100.0 | 100.0 |
| Diseases of the blood and blood-forming organs and certain disorders invo | 2 | 0 | 1 | 0 | 3 | 66.7 | 66.7 |
| Volume depletion, disorders of fluid, electrolyte and acid-base balance | 2 | 0 | 1 | 0 | 3 | 66.7 | 66.7 |
| Newborn affected by other complications of labor and delivery | 2 | 0 | 0 | 0 | 2 | 100.0 | 100.0 |
| Neonatal hemorrhage | 2 | 2 | 0 | 0 | 4 | 50.0 | 100.0 |
| Newborn affected by maternal hypertensive disorders | 1 | 0 | 0 | 0 | 1 | 100.0 | 100.0 |
| Newborn affected by noxious influences transmitted via placenta or breast | 1 | 0 | 0 | 0 | 1 | 100.0 | 100.0 |
| Slow fetal growth and fetal malnutrition | 1 | 0 | 0 | 0 | 1 | 100.0 | 100.0 |
| Interstitial emphysema and related conditions originating in the perinata | 1 | 0 | 1 | 0 | 2 | 50.0 | 50.0 |
| Pulmonary hemorrhage originating in the perinatal period | 1 | 0 | 0 | 0 | 1 | 100.0 | 100.0 |
| All other causes | 5 | 9 | 33 | 0 | 47 | 10.6 | 29.8 |
| TOTAL | 208 | 30 | 73 | 0 | 311 | 66.9 | 76.5 |

Notes:

1. Leading causes of infant death are categorized using NCHS rankable causes of infant death, specific ICD-10 codes are shown in Appendix D.
2. Very preterm is defined as less than 32 weeks of gestation.
3. Moderately preterm is defined as between 32 and 36 weeks of gestation.
4. Term is defined as 37 and greater weeks of gestation.
5. The percent born preterm includes both the very preterm and moderately preterm groups.

Source: Delaware Department of Health and Social Services, Division of Public Health, Delaware Health Statistics Center

TABLE E-9. FIVE-YEAR AVERAGE INFANT MORTALITY RATES BY RACE AND SELECTED RISK MARKERS, DELAWARE LIVE BIRTH COHORT, 2002-2018

| Parameter/ Race | 2002 -2006 | 2003 -2007 | 2004 -2008 | 2005 -2009 | 2006 -2010 | 2007 -2011 | 2008 -2012 | 2009 -2013 | 2010 -2014 | 2011 -2015 | 2012 -2016 | 2013 -2017 | 2014 -2018 |
|---------------------------------|---------------|---------------|---------------|---------------|---------------|---------------|---------------|---------------|---------------|---------------|---------------|---------------|---------------|
| BIRTHWEIGHT | | | | | | | | | | | | | |
| 2500+ | | | | | | | | | | | | | |
| All Races | 2.2 | 2.3 | 2.0 | 1.9 | 2.2 | 2.2 | 2.2 | 2.2 | 2.2 | 2.2 | 2.1 | 2.0 | 2.0 |
| Non-Hispanic White | 1.7 | 1.8 | 1.6 | 1.6 | 2.0 | 2.3 | 2.4 | 2.5 | 2.4 | 2.2 | 2.0 | 1.8 | 1.9 |
| Non-Hispanic Black | 3.6 | 3.4 | 2.9 | 2.7 | 2.6 | 2.2 | 2.5 | 2.5 | 2.5 | 2.6 | 2.6 | 2.9 | 2.9 |
| <2500 | | | | | | | | | | | | | |
| All Races | 69.9 | 68.8 | 69.2 | 70.6 | 65.5 | 67.1 | 68.2 | 64.6 | 61.7 | 64.6 | 62.2 | 58.2 | 57.7 |
| Non-Hispanic White | 62.9 | 58.4 | 59.8 | 55.5 | 54.5 | 52.3 | 51.1 | 46.9 | 47.1 | 49.4 | 48.1 | 44.2 | 43.6 |
| Non-Hispanic Black | 81.1 | 82.6 | 84.2 | 90.1 | 82.1 | 86.5 | 88.9 | 83.3 | 76.3 | 79.6 | 74.7 | 71.0 | 69.0 |
| <1500 | | | | | | | | | | | | | |
| All Races | 289.4 | 285.8 | 286.8 | 279.3 | 260.8 | 264.7 | 267.6 | 258.6 | 253.1 | 267.7 | 263.8 | 247.2 | 246.5 |
| Non-Hispanic White | 283.9 | 270.5 | 268.1 | 240.6 | 228.6 | 222.5 | 215.2 | 203.9 | 209.0 | 228.3 | 221.4 | 218.0 | 229.6 |
| Non-Hispanic Black | 289.1 | 285.7 | 290.9 | 298.0 | 283.3 | 295.2 | 308.6 | 296.5 | 277.2 | 289.4 | 290.9 | 268.1 | 257.8 |
| GESTATION | | | | | | | | | | | | | |
| 37+ weeks | | | | | | | | | | | | | |
| All Races | 2.2 | 2.3 | 2.0 | 2.0 | 2.4 | 2.6 | 2.6 | 2.5 | 2.6 | 2.5 | 2.2 | 2.2 | 2.3 |
| Non-Hispanic White | 1.7 | 1.9 | 1.8 | 1.7 | 2.3 | 2.7 | 2.7 | 2.7 | 2.8 | 2.3 | 2.0 | 1.7 | 1.8 |
| Non-Hispanic Black | 3.4 | 3.4 | 2.8 | 2.6 | 2.7 | 2.6 | 2.7 | 2.7 | 2.9 | 3.1 | 3.0 | 3.4 | 3.6 |
| <37 weeks | | | | | | | | | | | | | |
| All Races | 49.1 | 47.1 | 47.0 | 47.3 | 43.6 | 44.3 | 45.5 | 44.0 | 41.5 | 44.8 | 43.3 | 40.4 | 39.9 |
| Non-Hispanic White | 40.5 | 36.8 | 36.8 | 35.0 | 34.2 | 33.0 | 32.3 | 31.2 | 28.9 | 32.8 | 33.0 | 30.4 | 30.1 |
| Non-Hispanic Black | 68.4 | 67.3 | 68.5 | 71.5 | 64.4 | 66.8 | 69.6 | 65.6 | 60.1 | 63.0 | 58.5 | 55.6 | 54.2 |
| <32 weeks | | | | | | | | | | | | | |
| All Races | 232.4 | 220.4 | 220.4 | 216.9 | 195.0 | 195.7 | 198.7 | 190.8 | 178.9 | 189.6 | 186.9 | 177.0 | 174.0 |
| Non-Hispanic White | 215.6 | 192.6 | 191.1 | 178.3 | 160.1 | 154.9 | 146.2 | 137.7 | 130.1 | 144.2 | 144.6 | 141.8 | 144.0 |
| Non-Hispanic Black | 249.2 | 245.6 | 254.0 | 258.1 | 236.5 | 241.2 | 249.6 | 235.5 | 216.0 | 226.1 | 225.0 | 212.5 | 205.3 |
| PLURALITY | | | | | | | | | | | | | |
| Single | | | | | | | | | | | | | |
| All Races | 7.1 | 7.2 | 7.0 | 7.0 | 7.0 | 7.0 | 6.9 | 6.7 | 6.3 | 6.4 | 6.1 | 5.9 | 6.0 |
| Non-Hispanic White | 5.2 | 5.2 | 5.1 | 4.7 | 5.3 | 5.4 | 5.2 | 5.1 | 4.8 | 4.6 | 4.4 | 4.0 | 4.1 |
| Non-Hispanic Black | 13.0 | 12.8 | 12.2 | 12.6 | 11.8 | 11.7 | 11.8 | 11.5 | 10.6 | 10.9 | 10.4 | 10.6 | 10.4 |
| Plural | | | | | | | | | | | | | |
| All Races | 47.0 | 44.0 | 40.3 | 41.0 | 32.6 | 34.2 | 35.0 | 34.5 | 36.1 | 42.6 | 43.4 | 37.7 | 38.0 |
| Non-Hispanic White | 37.3 | 30.2 | 26.5 | 26.2 | 21.0 | 20.8 | 22.0 | 22.2 | 27.0 | 33.3 | 35.2 | 31.0 | 29.1 |
| Non-Hispanic Black | 59.7 | 64.4 | 68.6 | 70.4 | 54.9 | 54.9 | 56.6 | 46.6 | 40.5 | 47.5 | 50.4 | 43.0 | 50.5 |
| SMOKING DURING PREGNANCY | | | | | | | | | | | | | |
| No | | | | | | | | | | | | | |
| All Races | 7.9 | 7.7 | 7.4 | 7.6 | 7.4 | 7.4 | 7.4 | 7.2 | 6.7 | 6.9 | 6.6 | 6.4 | 6.4 |
| Non-Hispanic White | 5.8 | 5.3 | 5.1 | 4.9 | 5.5 | 5.4 | 5.5 | 5.3 | 4.9 | 4.7 | 4.5 | 4.0 | 4.0 |
| Non-Hispanic Black | 13.7 | 13.5 | 13.2 | 13.8 | 12.8 | 13.0 | 13.3 | 12.5 | 11.6 | 12.0 | 11.2 | 11.1 | 11.0 |
| Yes | | | | | | | | | | | | | |
| All Races | 13.4 | 13.9 | 13.3 | 12.1 | 10.7 | 10.8 | 10.0 | 9.7 | 10.7 | 11.5 | 12.1 | 11.9 | 13.4 |
| Non-Hispanic White | 10.4 | 10.8 | 10.8 | 8.7 | 8.2 | 8.5 | 7.3 | 6.9 | 8.8 | 10.0 | 10.4 | 10.0 | 10.7 |
| Non-Hispanic Black | 24.2 | 24.2 | 21.6 | 21.9 | 17.8 | 16.1 | 16.2 | 16.0 | 14.4 | 15.0 | 17.6 | 18.3 | 20.0 |

TABLE E-9. FIVE-YEAR AVERAGE INFANT MORTALITY RATES BY RACE AND SELECTED RISK MARKERS, DELAWARE LIVE BIRTH COHORT, 2002-2018 (continued)

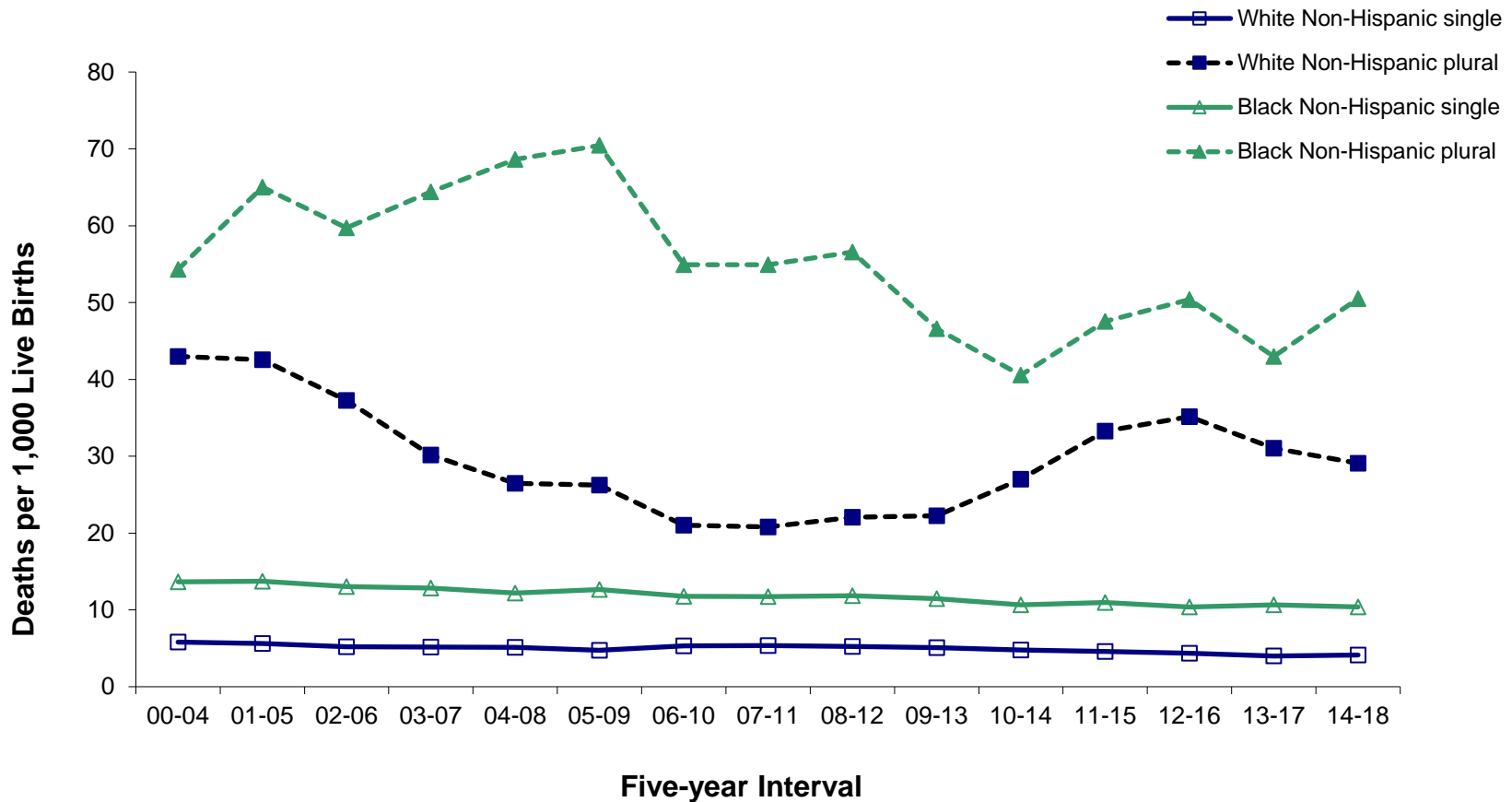
| Parameter/ Race | 2002 -2006 | 2003 -2007 | 2004 -2008 | 2005 -2009 | 2006 -2010 | 2007 -2011 | 2008 -2012 | 2009 -2013 | 2010 -2014 | 2011 -2015 | 2012 -2016 | 2013 -2017 | 2014 -2018 |
|-----------------------------|---------------|---------------|---------------|---------------|---------------|---------------|---------------|---------------|---------------|---------------|---------------|---------------|---------------|
| EDUCATION | | | | | | | | | | | | | |
| HS Grad or less | | | | | | | | | | | | | |
| All Races | 10.7 | 10.8 | 10.1 | 10.0 | 10.0 | 10.0 | 9.5 | 9.5 | 8.8 | 9.3 | 8.9 | 9.2 | 9.3 |
| Non-Hispanic White | 8.9 | 8.8 | 8.5 | 8.1 | 8.6 | 8.3 | 7.8 | 7.7 | 7.2 | 7.8 | 7.5 | 7.3 | 7.3 |
| Non-Hispanic Black | 16.6 | 16.4 | 15.3 | 15.4 | 14.8 | 15.0 | 15.3 | 15.1 | 13.7 | 14.2 | 13.3 | 13.9 | 13.6 |
| 1+ yrs college | | | | | | | | | | | | | |
| All Races | 5.8 | 5.4 | 5.6 | 5.9 | 5.6 | 5.8 | 6.2 | 5.7 | 5.7 | 5.9 | 5.7 | 5.1 | 5.2 |
| Non-Hispanic White | 4.3 | 4.0 | 4.0 | 3.8 | 4.1 | 4.5 | 4.7 | 4.4 | 4.5 | 4.3 | 4.1 | 3.6 | 3.7 |
| Non-Hispanic Black | 11.2 | 11.1 | 11.5 | 13.1 | 11.2 | 10.8 | 11.0 | 9.7 | 9.2 | 9.6 | 9.5 | 9.1 | 9.4 |
| PAYMENT FOR DELIVERY | | | | | | | | | | | | | |
| Medicaid | | | | | | | | | | | | | |
| All Races | 9.6 | 10.4 | 10.2 | 9.9 | 9.5 | 9.3 | 8.8 | 8.5 | 8.2 | 8.7 | 8.7 | 8.2 | 8.5 |
| Non-Hispanic White | 8.5 | 8.9 | 9.2 | 8.2 | 8.4 | 7.3 | 7.1 | 6.7 | 6.8 | 7.1 | 7.6 | 6.8 | 7.1 |
| Non-Hispanic Black | 13.9 | 14.5 | 14.1 | 14.0 | 12.9 | 13.5 | 13.5 | 13.0 | 12.2 | 12.6 | 11.8 | 11.2 | 11.3 |
| Private Insurance | | | | | | | | | | | | | |
| All Races | 7.4 | 6.7 | 6.4 | 6.6 | 6.4 | 6.4 | 6.6 | 6.4 | 6.2 | 6.2 | 5.9 | 5.8 | 5.6 |
| Non-Hispanic White | 5.3 | 4.7 | 4.5 | 4.3 | 4.6 | 5.1 | 4.9 | 4.9 | 4.6 | 4.5 | 4.0 | 3.8 | 3.7 |
| Non-Hispanic Black | 16.7 | 15.5 | 14.9 | 16.3 | 14.8 | 13.4 | 13.9 | 12.6 | 11.3 | 12.2 | 12.0 | 13.0 | 12.6 |

Notes:

1. See the Basic Definitions' section for definitions of birthweight, gestation, prenatal care attainment, and plurality.
2. "---" indicates rate does not meet standards of reliability or precision; based on fewer than 20 deaths in the numerator.
3. Primary source of payment for delivery not available prior to 1991.

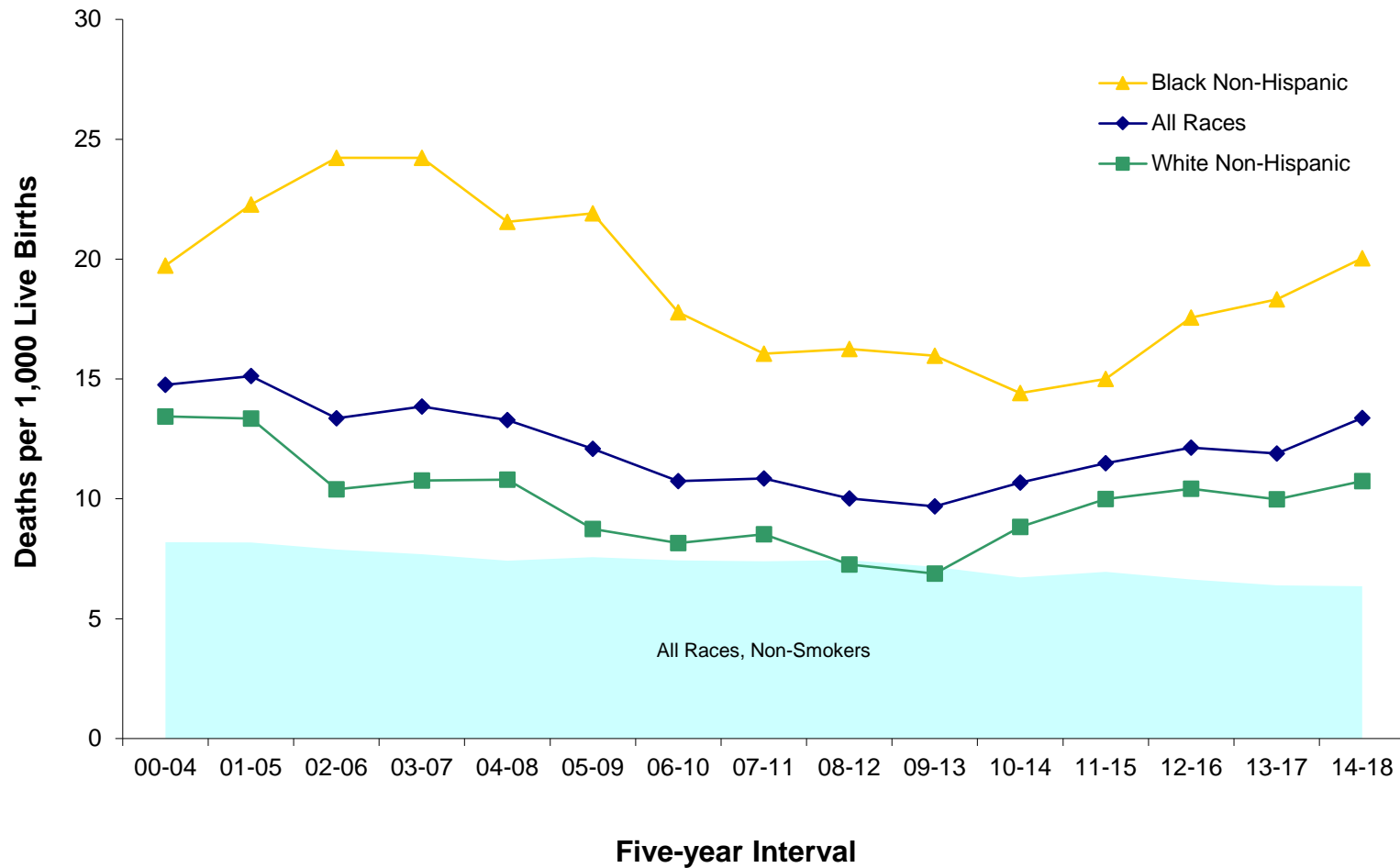
Source: Delaware Department of Health and Social Services, Division of Public Health, Delaware Health Statistics Center

Figure E-5. Five-year Average Infant Mortality Rates by Race and Plurality, Delaware, 2000-2018 Live Birth Cohort



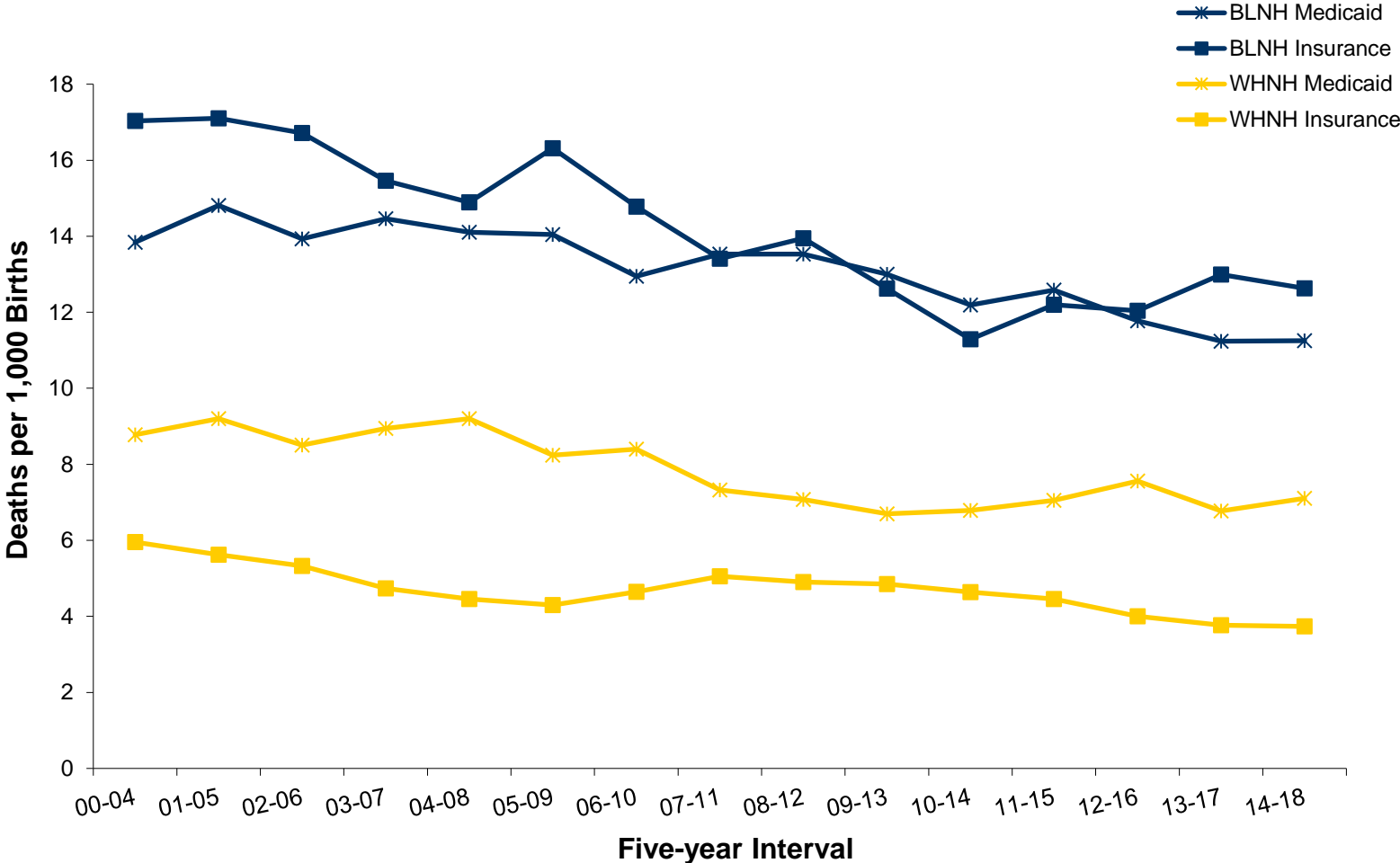
Source: Delaware Department of Health and Social Services, Division of Public Health, Delaware Health Statistics Center

Figure E-6. Five-year Average Infant Mortality Rates by Race of Mothers who Smoked during Pregnancy versus all Non-smoking Mothers, Delaware, 2000-2018 Live Birth Cohort



Source: Delaware Department of Health and Social Services, Division of Public Health, Delaware Health Statistics Center

Figure E-7. Five-year Average Infant Mortality Rates by Race and Source of Payment for Delivery, Delaware, 2000-2018 Live Birth Cohort



Source: Delaware Department of Health and Social Services, Division of Public Health, Delaware Health Statistics Center

TABLE E-10. NUMBER OF INFANT DEATHS BY PLURALITY, BIRTH WEIGHT IN GRAMS, RACE OF MOTHER, AND SEX OF CHILD, DELAWARE, 2014-2018, LIVE BIRTH COHORT

| Plurality/ Birth Weight | Race and Sex | | | | | | | | | | | |
|----------------------------|--------------|------|--------|--------------------|------|--------|--------------------|------|--------|----------------------------|------|--------|
| | All Races | | | Non-Hispanic White | | | Non-Hispanic Black | | | Non-Hispanic Other/Unknown | | |
| | Both Sexes | Male | Female | Both Sexes | Male | Female | Both Sexes | Male | Female | Both Sexes | Male | Female |
| All Births | 382 | 196 | 186 | 136 | 66 | 70 | 171 | 91 | 80 | 16 | 7 | 9 |
| <2500 | 280 | 140 | 140 | 87 | 42 | 45 | 133 | 68 | 65 | 12 | 4 | 8 |
| <1500 | 232 | 120 | 112 | 73 | 35 | 38 | 116 | 61 | 55 | 10 | 4 | 6 |
| <500 | 121 | 57 | 64 | 35 | 15 | 20 | 69 | 33 | 36 | 6 | 2 | 4 |
| 500-999 | 92 | 58 | 34 | 30 | 18 | 12 | 39 | 26 | 13 | 3 | 1 | 2 |
| 1000-1499 | 19 | 5 | 14 | 8 | 2 | 6 | 8 | 2 | 6 | 1 | 1 | 0 |
| 1500-1999 | 19 | 6 | 13 | 3 | 1 | 2 | 6 | 2 | 4 | 2 | 0 | 2 |
| 2000-2499 | 29 | 14 | 15 | 11 | 6 | 5 | 11 | 5 | 6 | 0 | 0 | 0 |
| 2500+ | 100 | 55 | 45 | 49 | 24 | 25 | 36 | 22 | 14 | 4 | 3 | 1 |
| 2500-2999 | 37 | 21 | 16 | 17 | 7 | 10 | 12 | 8 | 4 | 2 | 2 | 0 |
| 3000-3499 | 34 | 16 | 18 | 14 | 6 | 8 | 15 | 9 | 6 | 2 | 1 | 1 |
| 3500-3999 | 17 | 10 | 7 | 10 | 6 | 4 | 5 | 2 | 3 | 0 | 0 | 0 |
| 4000-4499 | 10 | 7 | 3 | 7 | 4 | 3 | 3 | 3 | 0 | 0 | 0 | 0 |
| 4500+ | 2 | 1 | 1 | 1 | 1 | 0 | 1 | 0 | 1 | 0 | 0 | 0 |
| Unknown | 2 | 1 | 1 | 0 | 0 | 0 | 2 | 1 | 1 | 0 | 0 | 0 |
| Single Births | 318 | 167 | 151 | 112 | 54 | 58 | 145 | 80 | 65 | 15 | 6 | 9 |
| <2500 | 223 | 114 | 109 | 66 | 31 | 35 | 110 | 58 | 52 | 11 | 3 | 8 |
| <1500 | 180 | 96 | 84 | 53 | 25 | 28 | 94 | 52 | 42 | 9 | 3 | 6 |
| <500 | 94 | 45 | 49 | 24 | 10 | 14 | 55 | 27 | 28 | 6 | 2 | 4 |
| 500-999 | 71 | 48 | 23 | 23 | 14 | 9 | 32 | 23 | 9 | 3 | 1 | 2 |
| 1000-1499 | 15 | 3 | 12 | 6 | 1 | 5 | 7 | 2 | 5 | 0 | 0 | 0 |
| 1500-1999 | 15 | 5 | 10 | 3 | 1 | 2 | 5 | 1 | 4 | 2 | 0 | 2 |
| 2000-2499 | 28 | 13 | 15 | 10 | 5 | 5 | 11 | 5 | 6 | 0 | 0 | 0 |
| 2500+ | 94 | 53 | 41 | 46 | 23 | 23 | 34 | 22 | 12 | 4 | 3 | 1 |
| 2500-2999 | 34 | 20 | 14 | 17 | 7 | 10 | 10 | 8 | 2 | 2 | 2 | 0 |
| 3000-3499 | 32 | 16 | 16 | 12 | 6 | 6 | 15 | 9 | 6 | 2 | 1 | 1 |
| 3500-3999 | 16 | 9 | 7 | 9 | 5 | 4 | 5 | 2 | 3 | 0 | 0 | 0 |
| 4000-4499 | 10 | 7 | 3 | 7 | 4 | 3 | 3 | 3 | 0 | 0 | 0 | 0 |
| 4500+ | 2 | 1 | 1 | 1 | 1 | 0 | 1 | 0 | 1 | 0 | 0 | 0 |
| Unknown | 1 | 0 | 1 | 0 | 0 | 0 | 1 | 0 | 1 | 0 | 0 | 0 |
| Plural Births | 64 | 29 | 35 | 24 | 12 | 12 | 26 | 11 | 15 | 1 | 1 | 0 |
| <2500 | 57 | 26 | 31 | 21 | 11 | 10 | 23 | 10 | 13 | 1 | 1 | 0 |
| <1500 | 52 | 24 | 28 | 20 | 10 | 10 | 22 | 9 | 13 | 1 | 1 | 0 |
| <500 | 27 | 12 | 15 | 11 | 5 | 6 | 14 | 6 | 8 | 0 | 0 | 0 |
| 500-999 | 21 | 10 | 11 | 7 | 4 | 3 | 7 | 3 | 4 | 0 | 0 | 0 |
| 1000-1499 | 4 | 2 | 2 | 2 | 1 | 1 | 1 | 0 | 1 | 1 | 1 | 0 |
| 1500-1999 | 4 | 1 | 3 | 0 | 0 | 0 | 1 | 1 | 0 | 0 | 0 | 0 |
| 2000-2499 | 1 | 1 | 0 | 1 | 1 | 0 | 0 | 0 | 0 | 0 | 0 | 0 |
| 2500+ | 6 | 2 | 4 | 3 | 1 | 2 | 2 | 0 | 2 | 0 | 0 | 0 |
| 2500-2999 | 3 | 1 | 2 | 0 | 0 | 0 | 2 | 0 | 2 | 0 | 0 | 0 |
| 3000-3499 | 2 | 0 | 2 | 2 | 0 | 2 | 0 | 0 | 0 | 0 | 0 | 0 |
| 3500-3999 | 1 | 1 | 0 | 1 | 1 | 0 | 0 | 0 | 0 | 0 | 0 | 0 |
| 4000-4499 | 0 | 0 | 0 | 0 | 0 | 0 | 0 | 0 | 0 | 0 | 0 | 0 |
| 4500+ | 0 | 0 | 0 | 0 | 0 | 0 | 0 | 0 | 0 | 0 | 0 | 0 |
| Unknown | 1 | 1 | 0 | 0 | 0 | 0 | 1 | 1 | 0 | 0 | 0 | 0 |

Note:

Infant deaths refer to deaths of children under one year of age.

Source: Delaware Department of Health and Social Services, Division of Public Health, Delaware Health Statistics Center

TABLE E-11. NUMBER OF NEONATAL DEATHS BY PLURALITY, BIRTH WEIGHT IN GRAMS, RACE OF MOTHER, AND SEX OF CHILD, DELAWARE, 2014-2018 LIVE BIRTH COHORT

| Plurality/ Birth Weight | Race and Sex | | | | | | | | | | | |
|----------------------------|---------------|------|--------|--------------------|------|--------|--------------------|------|--------|--------------------|------|--------|
| | All Races | | | Non-Hispanic White | | | Non-Hispanic Black | | | Non-Hispanic Other | | |
| | Both Sexes | Male | Female | Both Sexes | Male | Female | Both Sexes | Male | Female | Both Sexes | Male | Female |
| All Births | 382 | 196 | 186 | 93 | 47 | 46 | 120 | 62 | 58 | 12 | 5 | 7 |
| <2500 | 280 | 140 | 140 | 77 | 37 | 40 | 108 | 55 | 53 | 9 | 3 | 6 |
| <1500 | 232 | 120 | 112 | 68 | 32 | 36 | 102 | 53 | 49 | 9 | 3 | 6 |
| <500 | 121 | 57 | 64 | 35 | 15 | 20 | 69 | 33 | 36 | 6 | 2 | 4 |
| 500-999 | 92 | 58 | 34 | 26 | 16 | 10 | 28 | 20 | 8 | 2 | 0 | 2 |
| 1000-1499 | 19 | 5 | 14 | 7 | 1 | 6 | 5 | 0 | 5 | 1 | 1 | 0 |
| 1500-1999 | 19 | 6 | 13 | 0 | 0 | 0 | 3 | 1 | 2 | 0 | 0 | 0 |
| 2000-2499 | 29 | 14 | 15 | 9 | 5 | 4 | 3 | 1 | 2 | 0 | 0 | 0 |
| 2500+ | 29 | 18 | 11 | 16 | 10 | 6 | 10 | 6 | 4 | 3 | 2 | 1 |
| 2500-2999 | 37 | 21 | 16 | 9 | 5 | 4 | 1 | 1 | 0 | 2 | 2 | 0 |
| 3000-3499 | 34 | 16 | 18 | 3 | 2 | 1 | 7 | 4 | 3 | 1 | 0 | 1 |
| 3500-3999 | 17 | 10 | 7 | 2 | 2 | 0 | 1 | 0 | 1 | 0 | 0 | 0 |
| 4000-4499 | 10 | 7 | 3 | 1 | 0 | 1 | 1 | 1 | 0 | 0 | 0 | 0 |
| 4500+ | 2 | 1 | 1 | 1 | 1 | 0 | 0 | 0 | 0 | 0 | 0 | 0 |
| Unknown | 2 | 1 | 1 | 0 | 0 | 0 | 2 | 1 | 1 | 0 | 0 | 0 |
| Single Births | 318 | 167 | 151 | 74 | 37 | 37 | 100 | 53 | 47 | 11 | 4 | 7 |
| <2500 | 223 | 114 | 109 | 58 | 27 | 31 | 89 | 47 | 42 | 8 | 2 | 6 |
| <1500 | 180 | 96 | 84 | 50 | 23 | 27 | 83 | 45 | 38 | 8 | 2 | 6 |
| <500 | 94 | 45 | 49 | 24 | 10 | 14 | 55 | 27 | 28 | 6 | 2 | 4 |
| 500-999 | 71 | 48 | 23 | 20 | 12 | 8 | 24 | 18 | 6 | 2 | 0 | 2 |
| 1000-1499 | 15 | 3 | 12 | 6 | 1 | 5 | 4 | 0 | 4 | 0 | 0 | 0 |
| 1500-1999 | 15 | 5 | 10 | 0 | 0 | 0 | 3 | 1 | 2 | 0 | 0 | 0 |
| 2000-2499 | 28 | 13 | 15 | 8 | 4 | 4 | 3 | 1 | 2 | 0 | 0 | 0 |
| 2500+ | 94 | 53 | 41 | 16 | 10 | 6 | 10 | 6 | 4 | 3 | 2 | 1 |
| 2500-2999 | 34 | 20 | 14 | 9 | 5 | 4 | 1 | 1 | 0 | 2 | 2 | 0 |
| 3000-3499 | 32 | 16 | 16 | 3 | 2 | 1 | 7 | 4 | 3 | 1 | 0 | 1 |
| 3500-3999 | 16 | 9 | 7 | 2 | 2 | 0 | 1 | 0 | 1 | 0 | 0 | 0 |
| 4000-4499 | 10 | 7 | 3 | 1 | 0 | 1 | 1 | 1 | 0 | 0 | 0 | 0 |
| 4500+ | 2 | 1 | 1 | 1 | 1 | 0 | 0 | 0 | 0 | 0 | 0 | 0 |
| Unknown | 1 | 0 | 1 | 0 | 0 | 0 | 1 | 0 | 1 | 0 | 0 | 0 |
| Plural Births | 64 | 29 | 35 | 19 | 10 | 9 | 20 | 9 | 11 | 1 | 1 | 0 |
| <2500 | 57 | 26 | 31 | 19 | 10 | 9 | 19 | 8 | 11 | 1 | 1 | 0 |
| <1500 | 52 | 24 | 28 | 18 | 9 | 9 | 19 | 8 | 11 | 1 | 1 | 0 |
| <500 | 27 | 12 | 15 | 11 | 5 | 6 | 14 | 6 | 8 | 0 | 0 | 0 |
| 500-999 | 21 | 10 | 11 | 6 | 4 | 2 | 4 | 2 | 2 | 0 | 0 | 0 |
| 1000-1499 | 4 | 2 | 2 | 1 | 0 | 1 | 1 | 0 | 1 | 1 | 1 | 0 |
| 1500-1999 | 4 | 1 | 3 | 0 | 0 | 0 | 0 | 0 | 0 | 0 | 0 | 0 |
| 2000-2499 | 1 | 1 | 0 | 1 | 1 | 0 | 0 | 0 | 0 | 0 | 0 | 0 |
| 2500+ | 6 | 2 | 4 | 0 | 0 | 0 | 0 | 0 | 0 | 0 | 0 | 0 |
| 2500-2999 | 3 | 1 | 2 | 0 | 0 | 0 | 0 | 0 | 0 | 0 | 0 | 0 |
| 3000-3499 | 2 | 0 | 2 | 0 | 0 | 0 | 0 | 0 | 0 | 0 | 0 | 0 |
| 3500-3999 | 1 | 1 | 0 | 0 | 0 | 0 | 0 | 0 | 0 | 0 | 0 | 0 |
| 4000-4499 | 0 | 0 | 0 | 0 | 0 | 0 | 0 | 0 | 0 | 0 | 0 | 0 |
| 4500+ | 0 | 0 | 0 | 0 | 0 | 0 | 0 | 0 | 0 | 0 | 0 | 0 |
| Unknown | 1 | 1 | 0 | 0 | 0 | 0 | 1 | 1 | 0 | 0 | 0 | 0 |

Note:

Neonatal deaths refer to deaths of children under 28 days of age.

Source: Delaware Department of Health and Social Services, Division of Public Health, Delaware Health Statistics Center