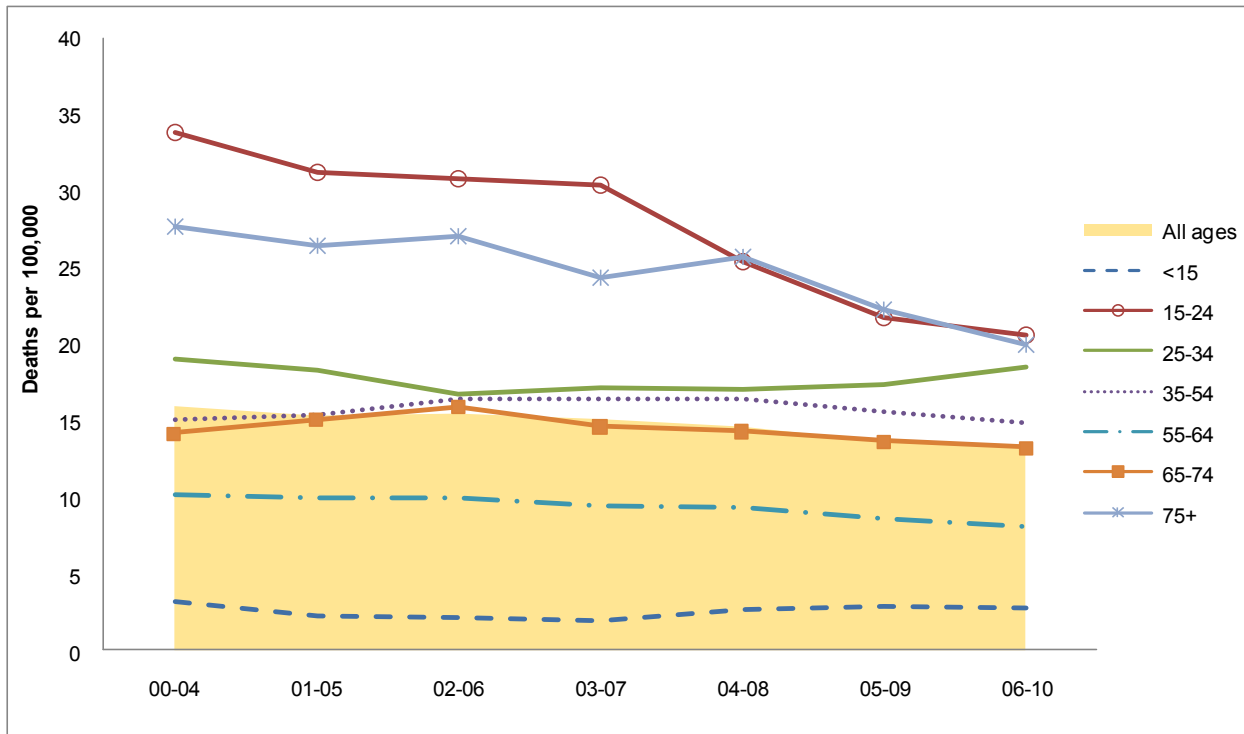


Unintentional Motor Vehicle Traffic-related Deaths and Hospitalizations in Delaware

Between 2000-2004 and 2006-2010, the age-adjusted mortality rate for unintentional motor vehicle traffic injuries declined by 16 percent, from 15.9 to 13.2 deaths per 100,000 population. The two age groups with the highest 2006-2010 mortality rates also demonstrated the largest decreases between 2000-2004 and 2006-2010. Rates for decedents in the 15-24 and the 75 and older age groups decreased by 39 and 28 percent respectively.

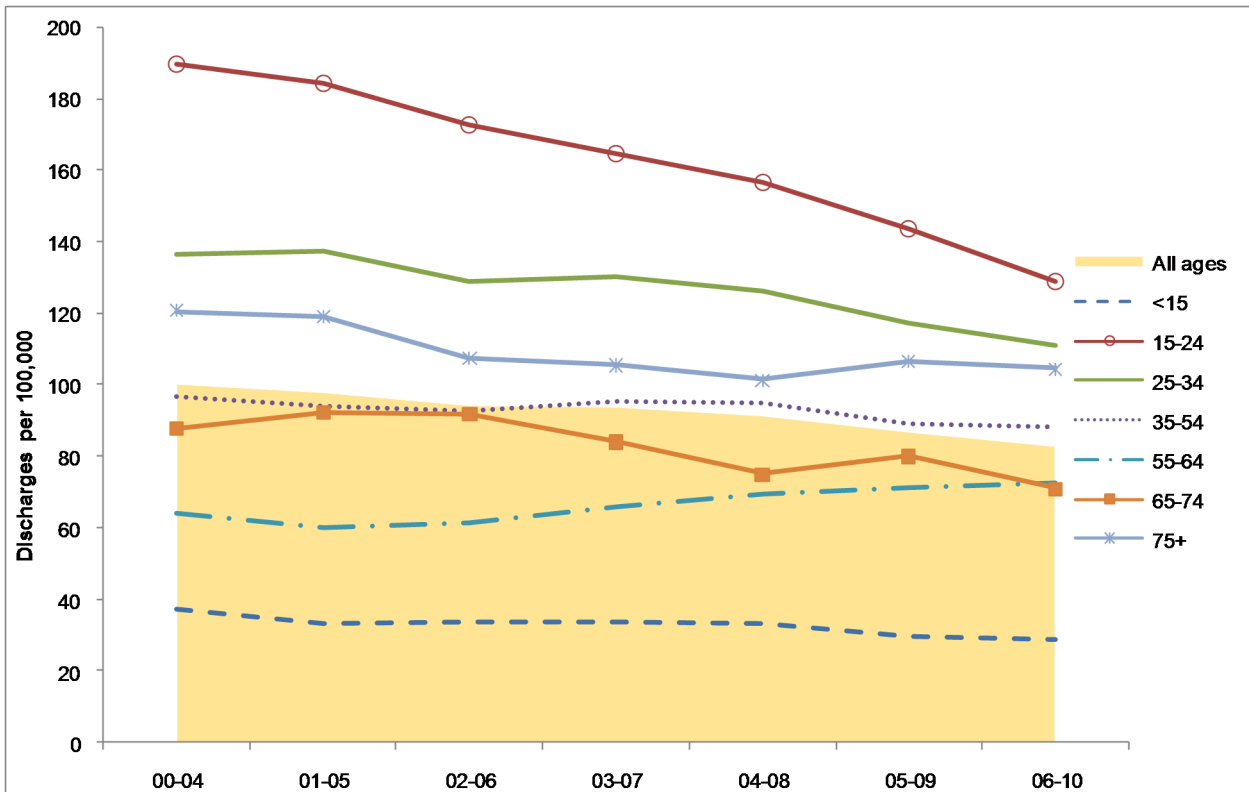
Figure 1. Five-year Mortality Rates for Unintentional Motor Vehicle Traffic-related Deaths by Age Group — Delaware, 2000-2010



Source: Delaware Health Statistics Center

Overall, the age-adjusted hospital discharge rate for unintentional motor vehicle traffic-related injuries decreased 17 percent between 2000-2004 and 2006-2010, dropping from 100.2 to 82.8 stays per 100,000. Patients in the 15-24 age group had both the highest 2006-2010 rate, and the largest decline in rates, dropping 32 percent between 2000-2004 and 2006-2010. Patients in the 25-34 and the 75 and older age groups had the second and third highest rates after declines of 19 and 13 percent respectively.

Figure 2. Five-year Hospital Discharge Rate for Unintentional Motor Vehicle Traffic-related Injuries by Age Group — Delaware Hospitals, 2000-2010



Source: Delaware Health Statistics Center



DELAWARE HEALTH AND SOCIAL SERVICES

Division of Public Health

If you have comments, suggestions, and/or questions, please contact the Delaware Health Statistics Center at (302) 744-4541.

Reported by Barbara Gladders