

The background of the page is white with a pattern of diagonal grey lines. The lines are parallel and spaced evenly, running from the top-left towards the bottom-right.

Population

2003

Population Highlights

<u>Key Indicators</u>	<u>Period</u>	<u>Delaware</u>	<u>Recent Trend in Delaware*</u>	<u>Projected Trend in Delaware**</u>
Population • Total resident population (See Table A-2)	2003	817,501	Increasing	Increasing
65 and Over Population • Resident population 65 years of age or older (See Table A-2)	2003	109,451	Increasing	Increasing
75 and Over Population • Resident population 75 years of age or older (See Table A-2)	2003	51,166	Increasing	Increasing

* Trend since 1990.
** Projected trend to 2020.

Key Facts

- Sussex County had the highest percentage of residents 65 years of age and older among the three counties at 19.1% in 2003 (see Table A-2).
- Kent County had the highest percentage of black residents among the three counties at 23.7% in 2003 (see Table A-2).
- The New Castle County population accounted for 63% of the total State population in 2003 (see Table A-2).

For more detailed population information, see the Delaware Population Consortium's website at: http://www.state.de.us/planning/information/dpc_projections.shtml.

TABLE A-1
PERCENT CHANGE IN POPULATION BY SEX

DELAWARE, COUNTIES, CITY OF DOVER, CITY OF NEWARK, AND CITY OF WILMINGTON, 1970-2020

Area/ Sex	1970	1980	% Change 1970-1980	1990	% Change 1980-1990	2000	% Change 1990-2000	2010*	% Change 2000-2010	2020*	% Change 2010-2020	% Change 2000-2020
Delaware	548104	594338	8.4	666168	12.1	786448	18.1	888230	12.9	972407	9.5	23.6
Male	267332	286599	7.2	322966	12.7	381914	18.3	429610	12.5	469222	9.2	22.9
Female	280772	307739	9.6	343202	11.5	404534	17.9	458620	13.4	503185	9.7	24.4
Kent	81892	98219	19.9	110993	13.0	127085	14.5	146259	15.1	158986	8.7	25.1
Male	41337	48254	16.7	54300	12.5	61256	12.8	68519	11.9	73638	7.5	20.2
Female	40555	49965	23.2	56693	13.5	65829	16.1	77740	18.1	85348	9.8	29.7
Dover	17488	23512	34.4	27630	17.5	32271	16.8	34499	6.9	36459	5.7	13.0
Male	8319	11695	40.6	13408	14.6	15178	13.2	16069	5.9	16760	4.3	10.4
Female	9169	11817	28.9	14222	20.4	17093	20.2	18430	7.8	19699	6.9	15.2
New Castle	385856	398115	3.2	441946	11.0	501933	13.6	547356	9.0	583980	6.7	16.3
Male	187124	191176	2.2	213869	11.9	243750	14.0	265650	9.0	282966	6.5	16.1
Female	198732	206939	4.1	228077	10.2	258183	13.2	281706	9.1	301014	6.9	16.6
Newark	20757	25247	21.6	26463	4.8	29300	10.7	31478	7.4	31864	1.2	8.8
Male	10242	11993	17.1	12408	3.5	13472	8.6	14701	9.1	14884	1.2	10.5
Female	10515	13254	26.0	14055	6.0	15828	12.6	16777	6.0	16980	1.2	7.3
Wilmington	80386	70195		71529	1.9	72664	1.6	71727	-1.3	70445	-1.8	-3.1
Male	36968	31458	-14.9	33249	5.7	34674	4.3	34950	0.8	34777	-0.5	0.3
Female	43418	38737	-10.8	38280	-1.2	37990	-0.8	36777	-3.2	35668	-3.0	-6.1
Sussex	80356	98004	22.0	113229	15.5	157430	39.0	194615	23.6	229441	17.9	45.7
Male	38871	47169	21.3	54797	16.2	76908	40.4	95441	24.1	112618	18.0	46.4
Female	41485	50835	22.5	58432	14.9	80522	37.8	99174	23.2	116823	17.8	45.1

POPSEX

Note:

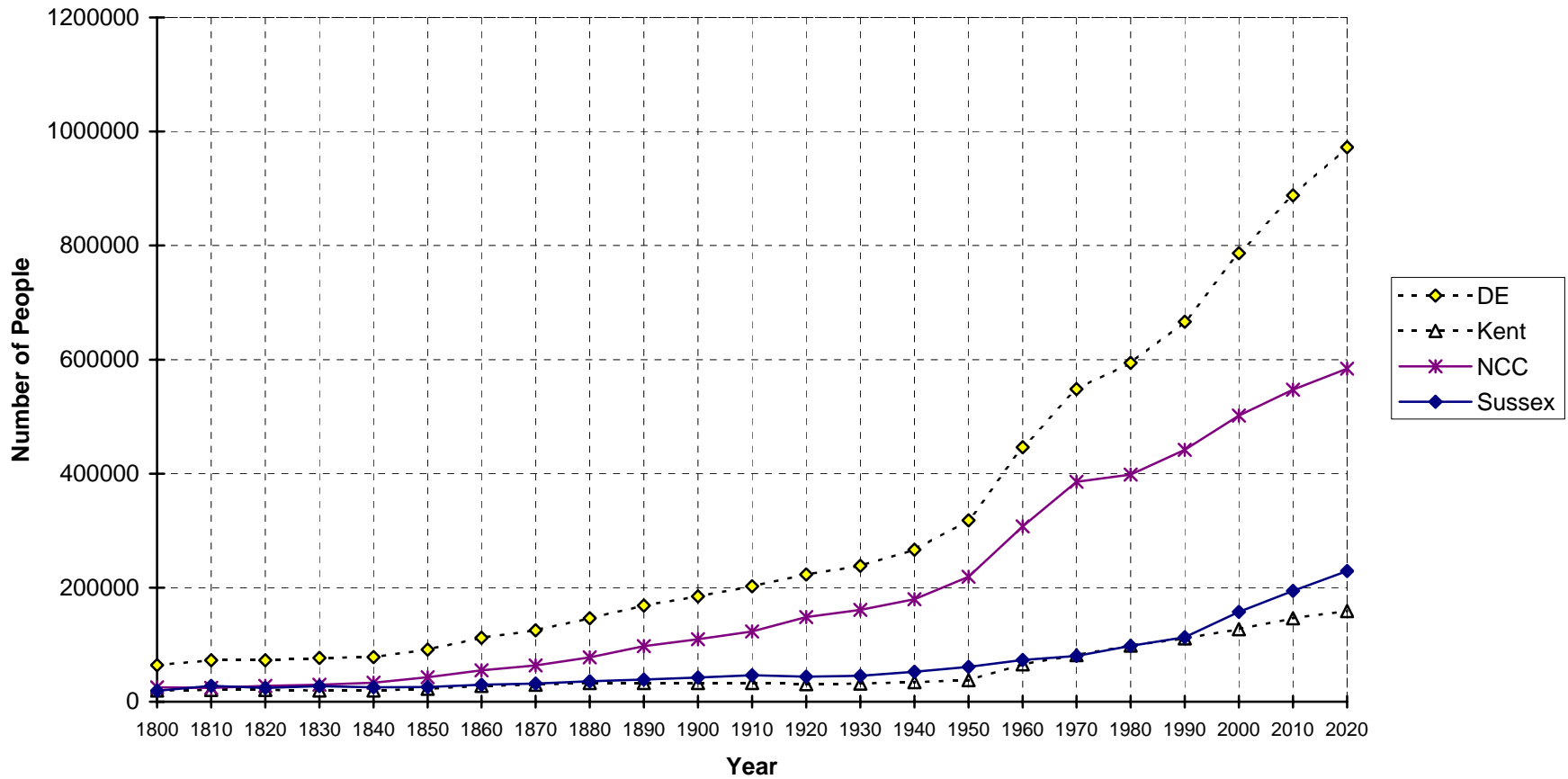
1. *Numbers for this year are projections.

Sources:

Delaware Health Statistics Center
Delaware Population Consortium
U.S. Bureau of the Census

Figure A-1 Population Growth

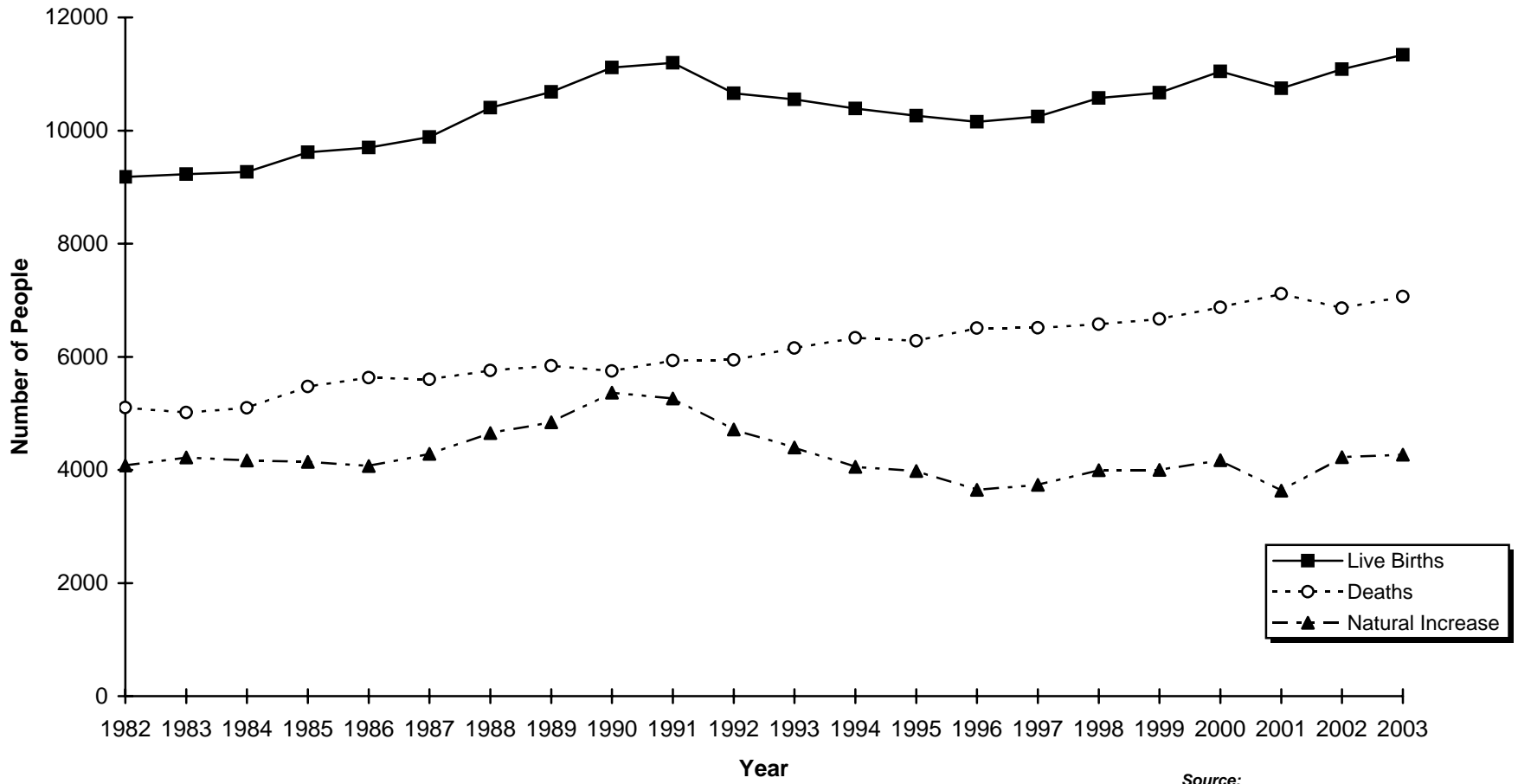
Delaware and Counties, 1800-2020



Sources:
 Delaware Health Statistics Center
 U.S. Bureau of the Census

Figure A-2
Live Births, Deaths, and Natural Increase

Delaware, 1983-2003



Source:
 Delaware Health Statistics
 Center

TABLE A-2
POPULATION ESTIMATES BY SEX, RACE AND AGE

DELAWARE, COUNTIES, CITY OF DOVER, CITY OF NEWARK, AND CITY OF WILMINGTON, 2003

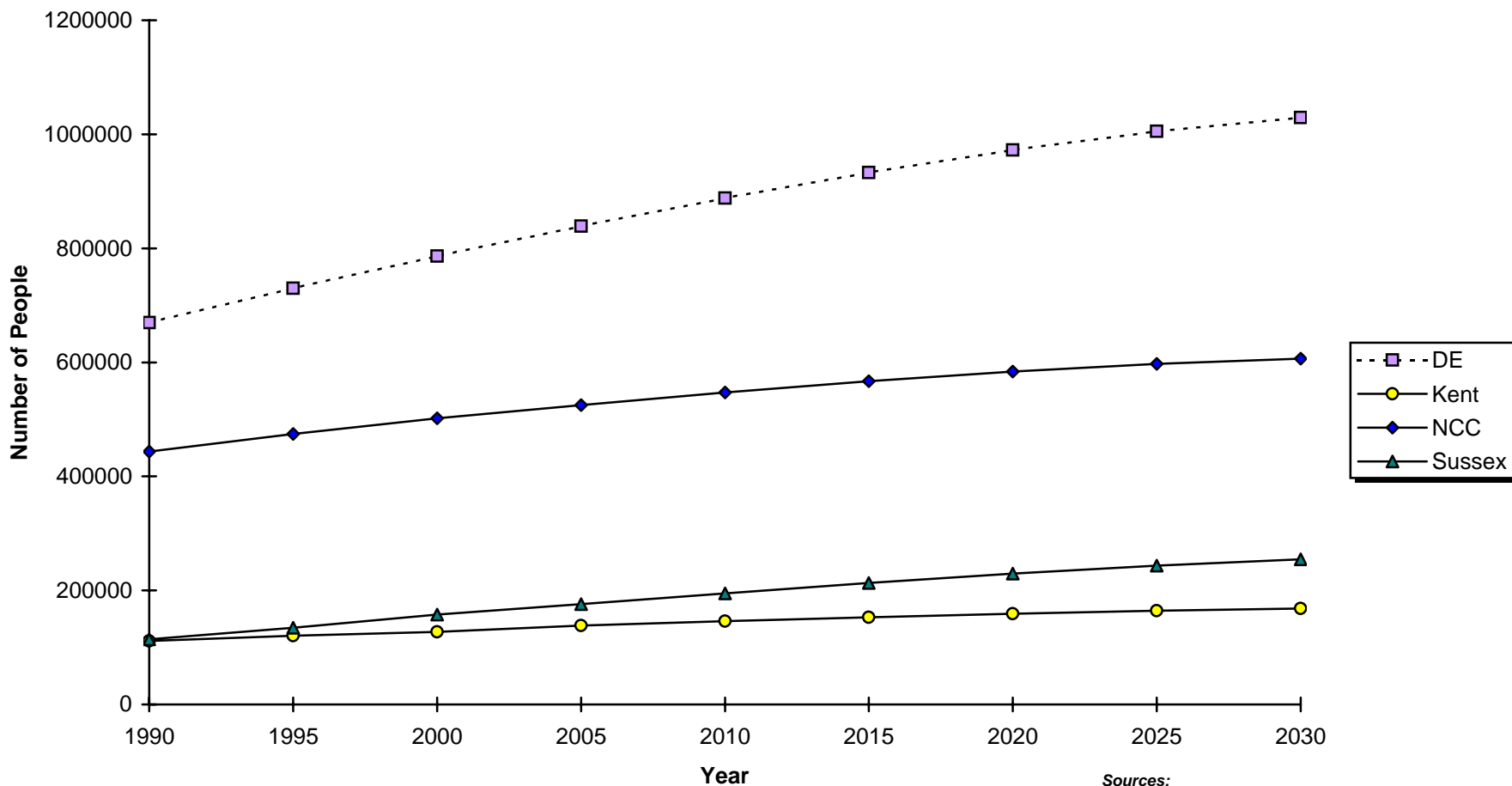
Area/ Sex/Race	Age																		
	Total	0-4	5-9	10-14	15-19	20-24	25-29	30-34	35-39	40-44	45-49	50-54	55-59	60-64	65-69	70-74	75-79	80-84	85+
Delaware	817501	53959	53795	58659	55769	57053	48868	55858	61600	65370	61071	53047	46315	36686	30416	27869	22804	16021	12341
Male	396452	27183	27515	30047	28347	27854	24365	27571	30285	31894	29830	25444	22280	17363	14217	12793	9700	6120	3644
White	295596	18798	18290	20149	19624	19408	16916	19570	22173	24159	23244	20204	18260	14392	11908	11179	8601	5473	3248
Black	79876	6760	7263	8140	7224	6581	5165	5642	6217	6182	5388	4336	3327	2473	1909	1386	979	561	343
Female	421049	26776	26280	28612	27422	29199	24503	28287	31315	33476	31241	27603	24035	19323	16199	15076	13104	9901	8697
White	313038	18437	17450	19182	18824	20677	16975	19793	22306	24809	23593	21296	19412	15923	13482	12917	11495	8763	7704
Black	88130	6797	6977	7826	7164	6944	5610	6432	7199	7182	6460	5311	3848	2844	2268	1875	1434	1038	921
Kent	134382	9482	9606	10650	10218	9499	7768	8664	9870	10686	9625	8007	7234	5702	5086	4505	3377	2459	1944
Male	64068	4763	4862	5332	4937	4506	3634	4049	4741	5129	4582	3819	3522	2717	2404	2130	1404	962	575
White	46774	3250	3225	3495	3378	2949	2632	2964	3563	3875	3498	2921	2779	2138	1908	1736	1166	817	480
Black	15022	1322	1415	1646	1391	1367	803	892	985	1048	944	794	651	530	435	356	221	134	88
Female	70314	4719	4744	5318	5281	4993	4134	4615	5129	5557	5043	4188	3712	2985	2682	2375	1973	1497	1369
White	50780	3207	3129	3474	3550	3098	2829	3330	3744	4100	3694	3119	2881	2359	2133	1954	1676	1305	1198
Black	16834	1327	1396	1644	1543	1716	1091	1058	1141	1240	1145	910	709	524	451	341	262	175	161
Dover	33179	2245	2066	2158	3066	3467	2259	2067	2158	2293	2119	1918	1654	1250	1169	1052	923	669	646
Male	15551	1130	1092	1062	1473	1695	1085	978	1029	1075	937	904	749	576	544	462	329	253	178
Female	17628	1115		1096	1593	1772	1174	1089	1129	1218	1182	1014	905	674	625	590	594	416	468
New Castle	515079	34852	34376	37447	35077	38628	33018	37689	40665	42128	39091	33438	27932	20696	16131	14644	12675	9285	7307
Male	250173	17534	17685	19235	18004	18736	16659	18663	20053	20573	19159	15966	13411	9815	7441	6475	5269	3389	2106
White	183033	12058	11631	12719	12300	13283	11464	13067	14385	15355	14676	12442	10700	7870	5996	5544	4623	3036	1884
Black	52395	4395	4683	5283	4636	4180	3605	3918	4281	4137	3618	2878	2202	1573	1173	781	566	300	186
Female	264906	17318	16691	18212	17073	19892	16359	19026	20612	21555	19932	17472	14521	10881	8690	8169	7406	5896	5201
White	192973	11830	10961	12065	11565	14540	11274	12911	14272	15663	14710	13182	11341	8673	6938	6862	6436	5176	4574
Black	58017	4451	4500	5014	4497	4224	3726	4575	5036	4839	4393	3593	2602	1852	1474	1149	856	657	579
Newark	30060	913	987	1163	5670	8194	1849	1353	1178	1313	1459	1363	1136	837	708	620	567	433	317
Male	13916	471	524	596	2206	3826	1007	725	569	667	717	654	539	409	308	251	231	146	70
Female	16144	442	463	567	3464	4368	842	628	609	646	742	709	597	428	400	369	336	287	247
Wilmington*	72425	5360	4711	5570	5102	5179	5602	6020	5531	5366	5032	4335	3424	2616	2175	1977	1682	1439	1304
Male	34796	2750	2474	2849	2541	2726	2824	3012	2763	2630	2461	2065	1541	1127	927	772	600	415	319
White	12530	806	484	522	613	808	1257	1413	1081	965	944	849	733	499	376	357	317	279	227
Black	19884	1722	1750	2075	1717	1663	1313	1358	1523	1521	1419	1109	735	583	519	391	275	127	84
Female	37629	2610	2237	2721	2561	2453	2778	3008	2768	2736	2571	2270	1883	1489	1248	1205	1082	1024	985
White	13108	735	454	469	543	653	1229	1242	833	802	847	857	797	609	474	584	629	663	688
Black	22324	1676	1600	2017	1813	1595	1335	1564	1757	1798	1613	1321	1003	834	728	600	437	344	289
Sussex	168040	9625	9813	10562	10474	8926	8082	9505	11065	12556	12355	11602	11149	10288	9199	8720	6752	4277	3090
Male	82211	4886	4968	5480	5406	4612	4072	4859	5491	6192	6089	5659	5347	4831	4372	4188	3027	1769	963
White	65789	3490	3434	3935	3946	3176	2820	3539	4225	4929	5070	4841	4781	4384	4004	3899	2812	1620	884
Black	12459	1043	1165	1211	1197	1034	757	832	951	997	826	664	474	370	301	249	192	127	69
Female	85829	4739	4845	5082	5068	4314	4010	4646	5574	6364	6266	5943	5802	5457	4827	4532	3725	2508	2127
White	69285	3400	3360	3643	3709	3039	2872	3552	4290	5046	5189	4995	5190	4891	4411	4101	3383	2282	1932
Black	13279	1019	1081	1168	1124	1004	793	799	1022	1103	922	808	537	468	343	385	316	206	181

POPSRA

Note:

1. *Race estimates for the City of Wilmington are illustrative and should be interpreted with caution.

**Figure A-3
Projected Population Growth
Delaware and Counties, 1990-2030**



Sources:
Delaware Health Statistics Center
Delaware Population Consortium

