

Population Highlights

<u>Key Indicators</u>	<u>Period</u>	<u>Delaware</u>	<u>Recent Trend in Delaware*</u>	<u>Projected Trend in Delaware**</u>
Population • Total resident population (See Table A-2)	2002	807,382	Increasing	Increasing
65 and Over Population • Resident population 65 years of age or older (See Table A-2)	2002	106,505	Increasing	Increasing
75 and Over Population • Resident population 75 years of age or older (See Table A-2)	2002	49,096	Increasing	Increasing

* Trend since 1990.
** Projected trend to 2020.

Key Facts

- Sussex County had the highest percentage of residents 65 years of age and older among the three counties at 18.8% in 2002 (see Table A-2).
- Kent County had the highest percentage of black residents among the three counties at 22.8% in 2002 (see Table A-2).
- The New Castle County population accounted for 63.5% of the total State population in 2002 (see Table A-2).

For more detailed population information, see the Delaware Population Consortium's website at: <http://www.cadsr.udel.edu/demography/consortium.htm>.

TABLE A-1
PERCENT CHANGE IN POPULATION BY SEX

DELAWARE, COUNTIES, CITY OF DOVER, CITY OF NEWARK, AND CITY OF WILMINGTON, 1970-2020

Area/ Sex	1970	1980	% Change 1970-1980	1990	% Change 1980-1990	2000	% Change 1990-2000	2010*	% Change 2000-2010	2020*	% Change 2010-2020	% Change 2000-2020
Delaware	548104	594338	8.4	666168	12.1	786448	18.1	887326	12.8	973659	9.7	23.8
Male	267332	286599	7.2	322966	12.7	381914	18.3	430108	12.6	470715	9.4	23.3
Female	280772	307739	9.6	343202	11.5	404534	17.9	457218	13.0	502944	10.0	24.3
Kent	81892	98219	19.9	110993	13.0	127085	14.5	140969	10.9	152032	7.8	19.6
Male	41337	48254	16.7	54300	12.5	61256	12.8	66797	9.0	71055	6.4	16.0
Female	40555	49965	23.2	56693	13.5	65829	16.1	74172	12.7	80977	9.2	23.0
Dover	17488	23512	34.4	27630	17.5	32271	16.8	34499	6.9	36459	5.7	13.0
Male	8319	11695	40.6	13408	14.6	15178	13.2	16069	5.9	16760	4.3	10.4
Female	9169	11817	28.9	14222	20.4	17093	20.2	18430	7.8	19699	6.9	15.2
New Castle	385856	398115	3.2	441946	11.0	501933	13.6	551137	9.8	589433	6.9	17.4
Male	187124	191176	2.2	213869	11.9	243750	14.0	267587	9.8	285762	6.8	17.2
Female	198732	206939	4.1	228077	10.2	258183	13.2	283550	9.8	303671	7.1	17.6
Newark	20757	25247	21.6	26463	4.8	29300	10.7	31479	7.4	31865	1.2	8.8
Male	10242	11993	17.1	12408	3.5	13472	8.6	14701	9.1	14884	1.2	10.5
Female	10515	13254	26.0	14055	6.0	15828	12.6	16778	6.0	16981	1.2	7.3
Wilmington	80386	70195		71529	1.9	72664	1.6	71727	-1.3	70445	-1.8	-3.1
Male	36968	31458	-14.9	33249	5.7	34674	4.3	34950	0.8	34777	-0.5	0.3
Female	43418	38737	-10.8	38280	-1.2	37990	-0.8	36777	-3.2	35668	-3.0	-6.1
Sussex	80356	98004	22.0	113229	15.5	157430	39.0	195220	24.0	232194	18.9	47.5
Male	38871	47169	21.3	54797	16.2	76908	40.4	95724	24.5	113898	19.0	48.1
Female	41485	50835	22.5	58432	14.9	80522	37.8	99496	23.6	118296	18.9	46.9

POPSEX

Note:

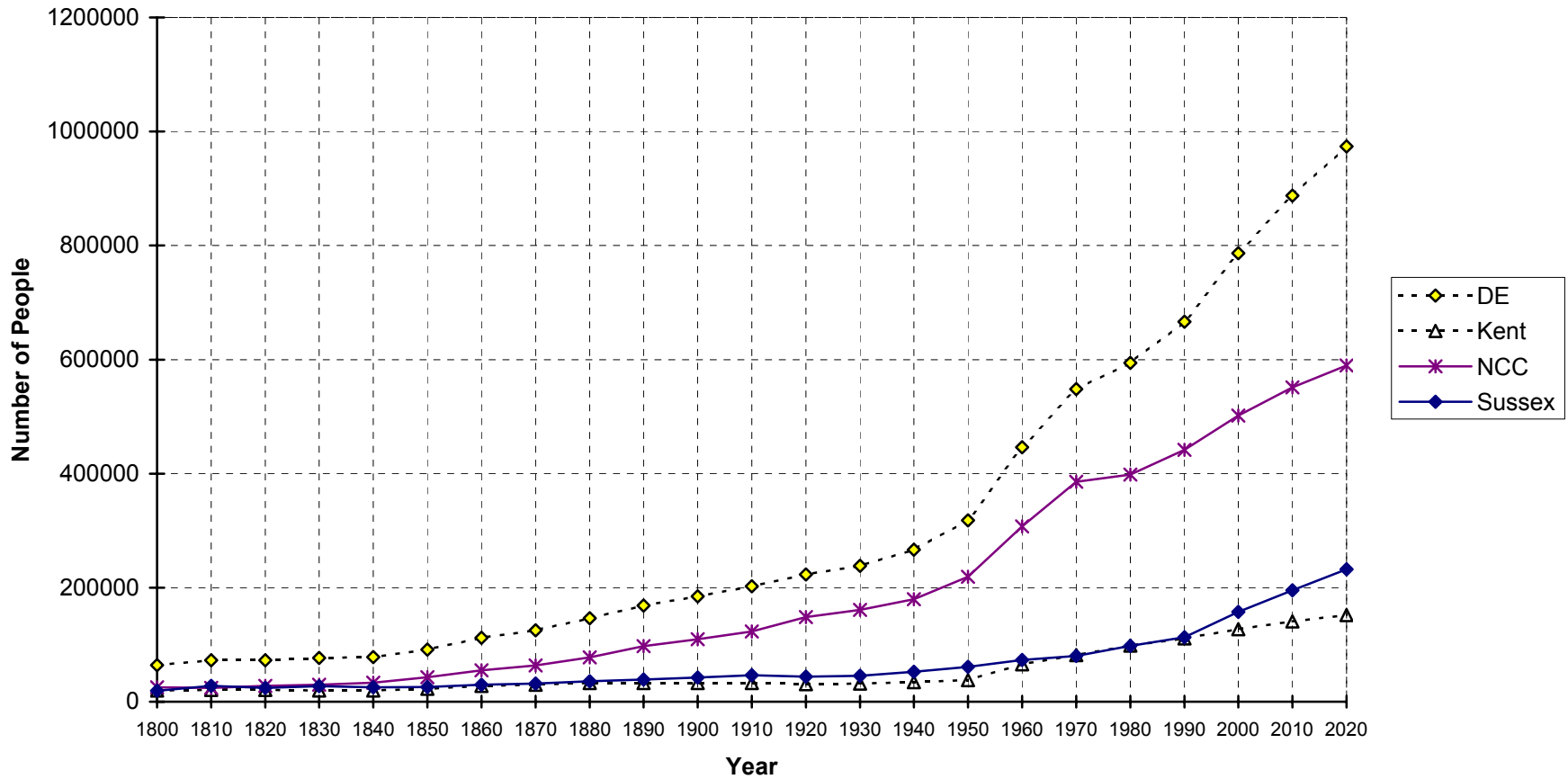
1. *Numbers for this year are projections.

Sources:

Delaware Health Statistics Center
Delaware Population Consortium
U.S. Bureau of the Census

**Figure A-1
Population Growth**

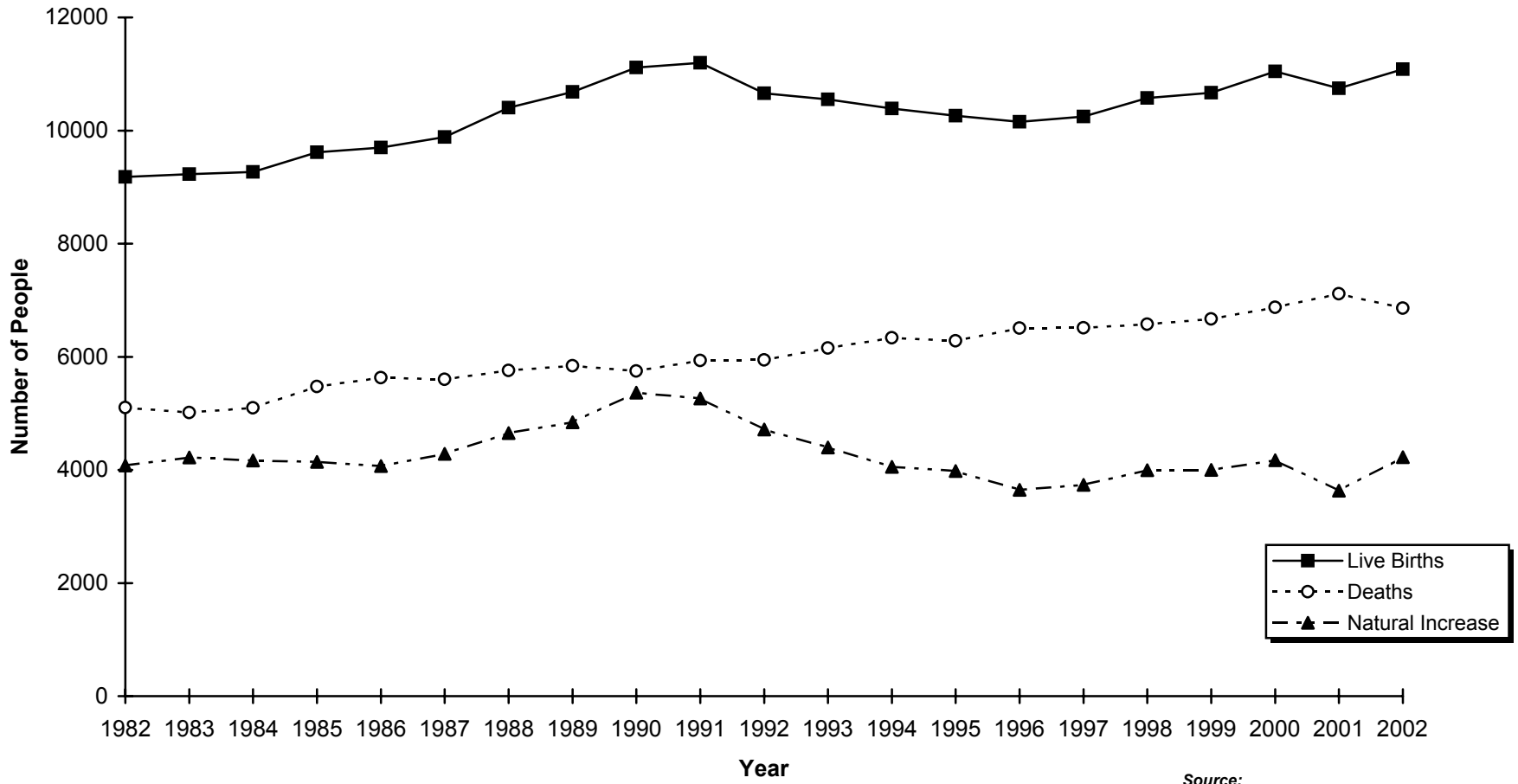
Delaware and Counties, 1800-2020



Sources:
Delaware Health Statistics Center
U.S. Bureau of the Census

Figure A-2
Live Births, Deaths, and Natural Increase

Delaware, 1982 - 2002



Source:
Delaware Health Statistics
Center

TABLE A-2
POPULATION ESTIMATES BY SEX, RACE AND AGE

DELAWARE, COUNTIES, CITY OF DOVER, CITY OF NEWARK, AND CITY OF WILMINGTON, 2002

Area/ Sex/Race	Age																		
	Total	0-4	5-9	10-14	15-19	20-24	25-29	30-34	35-39	40-44	45-49	50-54	55-59	60-64	65-69	70-74	75-79	80-84	85+
Delaware	807382	53365	54392	57891	55203	56608	48316	57066	63143	65096	58906	52309	43749	34833	29912	27497	22162	15323	11611
Male	391877	27015	27798	29699	28238	27546	24079	28132	31149	31815	28678	25077	21063	16510	13975	12562	9310	5885	3346
White	293206	18487	18594	20190	19622	19257	16685	20142	22955	24339	22504	20021	17342	13698	11794	11055	8266	5281	2974
Black	78213	6798	7281	7860	7110	6385	5037	5782	6338	6048	5054	4203	3073	2341	1824	1301	924	530	324
Female	415505	26350	26594	28192	26965	29062	24237	28934	31994	33281	30228	27232	22686	18323	15937	14935	12852	9438	8265
White	309830	17874	17893	19042	18704	20595	16736	20305	23036	24816	22935	21178	18461	15116	13341	12841	11274	8383	7300
Black	86274	6797	6961	7618	6834	6879	5534	6606	7231	7077	6169	5061	3549	2644	2201	1834	1416	962	901
Kent	131071	9359	9543	10412	9807	9546	7681	8866	10232	10400	9097	7905	6731	5416	4781	4185	3148	2240	1722
Male	62830	4693	4847	5291	4812	4583	3609	4257	4917	5014	4329	3796	3278	2551	2258	1942	1297	866	490
White	46514	3229	3296	3618	3347	2993	2634	3152	3737	3870	3362	2942	2639	2023	1817	1618	1092	738	407
Black	14076	1264	1338	1474	1300	1398	775	911	973	952	831	760	566	473	384	294	187	118	78
Female	68241	4666	4696	5121	4995	4963	4072	4609	5315	5386	4768	4109	3453	2865	2523	2243	1851	1374	1232
White	49862	3172	3214	3494	3473	3000	2837	3354	3931	4024	3540	3097	2714	2294	2007	1860	1587	1196	1068
Black	15746	1297	1281	1429	1339	1789	1005	1035	1143	1155	1035	852	630	461	427	317	233	163	155
Dover	32860	2213	2086	2153	3032	3394	2239	2107	2222	2273	2043	1892	1580	1212	1167	1032	916	658	641
Male	15418	1111	1109	1058	1458	1664	1072	1009	1058	1067	903	894	716	556	551	450	322	247	173
Female	17442	1102		1095	1574	1730	1167	1098	1164	1206	1140	998	864	656	616	582	594	411	468
New Castle	512358	34743	35070	37104	34998	38782	32702	38618	41556	42329	37973	32961	26431	19556	16004	14784	12686	9037	7024
Male	248861	17619	17969	19051	18051	18692	16470	19028	20585	20729	18502	15715	12720	9298	7381	6491	5234	3327	1999
White	182304	11962	11805	12674	12345	13349	11237	13417	14816	15600	14250	12269	10170	7451	5984	5591	4605	2994	1785
Black	51987	4473	4796	5207	4635	4014	3538	4036	4399	4128	3438	2824	2071	1497	1153	759	551	286	182
Female	263497	17124	17101	18053	16947	20090	16232	19590	20971	21600	19471	17246	13711	10258	8623	8293	7452	5710	5025
White	192203	11497	11292	11925	11570	14780	11019	13326	14669	15784	14429	13066	10801	8157	6948	7003	6475	5052	4410
Black	57551	4478	4613	5044	4349	4157	3806	4716	5063	4839	4245	3471	2418	1744	1429	1142	867	598	572
Newark	29798	900	1000	1142	5618	8098	1846	1379	1201	1305	1424	1337	1088	804	709	628	575	427	317
Male	13760	464	531	587	2173	3763	1008	737	580	663	697	643	516	394	308	254	233	141	68
Female	16038	436	469	555	3445	4335	838	642	621	642	727	694	572	410	401	374	342	286	249
Wilmington*	72523	5192	4899	5569	5137	5057	5717	6059	5662	5394	5015	4294	3255	2523	2218	2001	1770	1465	1296
Male	34760	2664	2564	2836	2584	2652	2884	3006	2853	2605	2435	2029	1481	1070	954	761	633	435	314
White	12576	734	493	555	618	772	1327	1407	1099	960	956	871	706	472	389	356	344	299	218
Black	19818	1711	1813	2040	1744	1618	1306	1377	1591	1517	1378	1047	710	557	536	381	277	127	88
Female	37763	2528	2335	2733	2553	2405	2833	3053	2809	2789	2580	2265	1774	1453	1264	1240	1137	1030	982
White	13256	689	459	476	560	638	1287	1210	851	843	899	857	753	590	490	610	680	689	675
Black	22320	1648	1667	2036	1786	1572	1327	1625	1797	1813	1569	1315	948	815	730	606	444	322	300
Sussex	163953	9263	9779	10375	10398	8280	7933	9582	11355	12367	11836	11443	10587	9861	9127	8528	6328	4046	2865
Male	80186	4703	4982	5357	5375	4271	4000	4847	5647	6072	5847	5566	5065	4661	4336	4129	2779	1692	857
White	64388	3296	3493	3898	3930	2915	2814	3573	4402	4869	4892	4810	4533	4224	3993	3846	2569	1549	782
Black	12150	1061	1147	1179	1175	973	724	835	966	968	785	619	436	371	287	248	186	126	64
Female	83767	4560	4797	5018	5023	4009	3933	4735	5708	6295	5989	5877	5522	5200	4791	4399	3549	2354	2008
White	67765	3205	3387	3623	3661	2815	2880	3625	4436	5008	4966	5015	4946	4665	4386	3978	3212	2135	1822
Black	12977	1022	1067	1145	1146	933	723	855	1025	1083	889	738	501	439	345	375	316	201	174

POPSRA

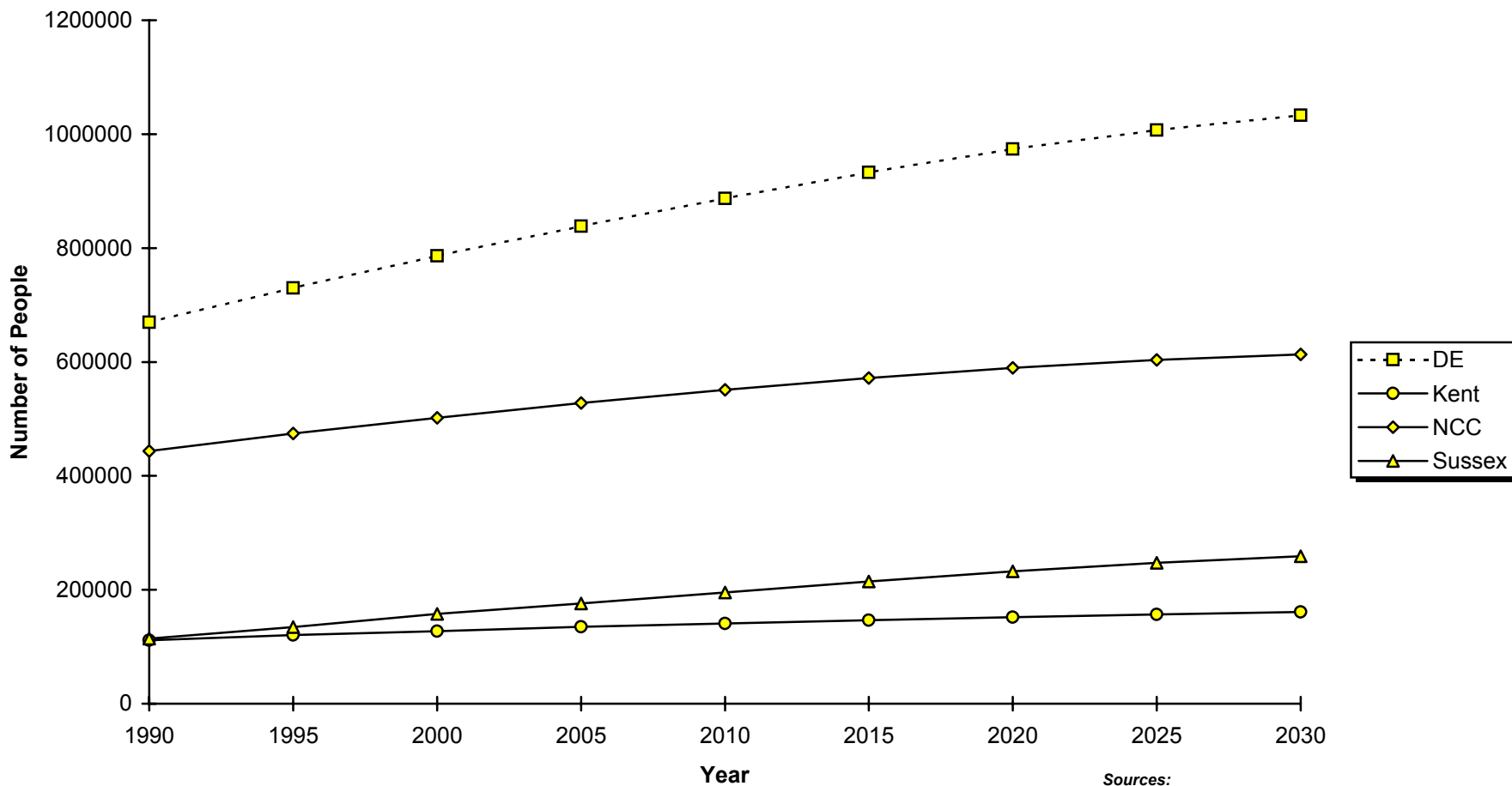
Note:

1. *Race estimates for the City of Wilmington are illustrative and should be interpreted with caution.

Sources:

Delaware Health Statistics Center
Delaware Population Consortium

Figure A-3
Projected Population Growth
Delaware and Counties, 1990-2030



Sources:
Delaware Health Statistics Center
Delaware Population Consortium