

The background of the page is filled with a pattern of parallel, diagonal gray lines. These lines are spaced evenly and run from the top-left towards the bottom-right, creating a textured, grid-like appearance.

Population

2006

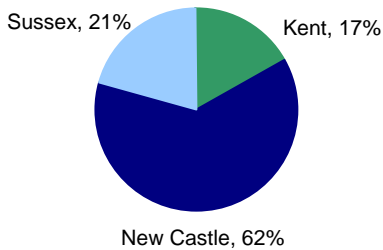
POPULATION

Each of Delaware's three counties continued their increasing population trend, though they grew at different rates. For the recent period from 2000 to 2006, county populations grew annually by 2.7 percent for Kent, 0.8 percent, for New Castle, and 2.4 percent for Sussex. The overall increase for Delaware was 1.4 percent.

While Sussex County had the highest percentage of residents 65 years of age and older among the three counties at 20.5% in 2006, more than half of the state's total 65+ population resided in New Castle County (see Table A-2).

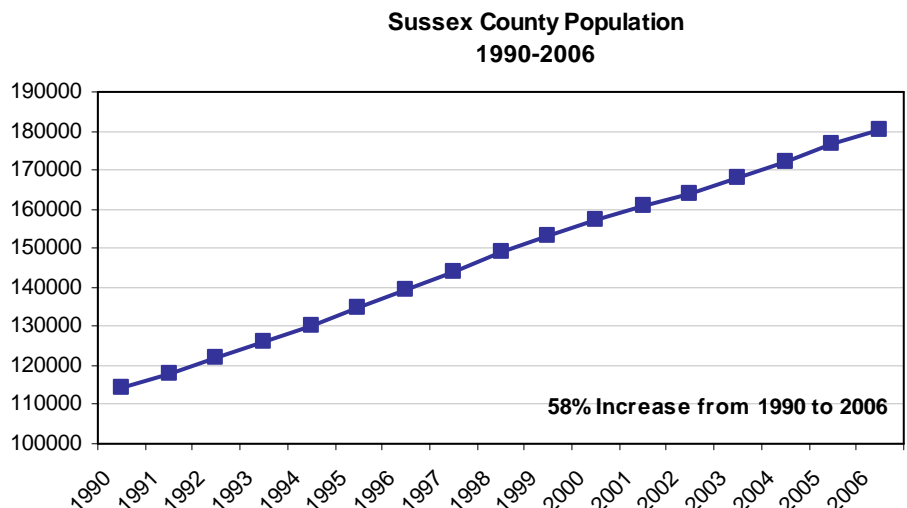
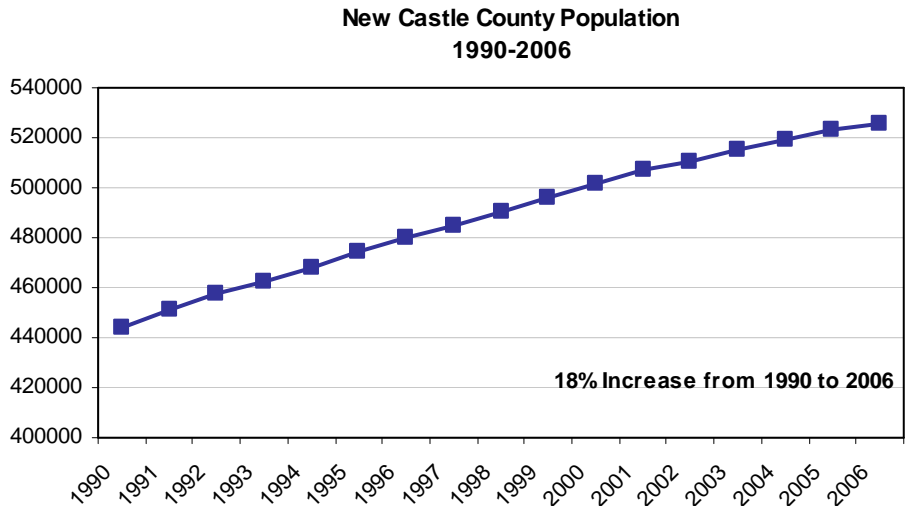
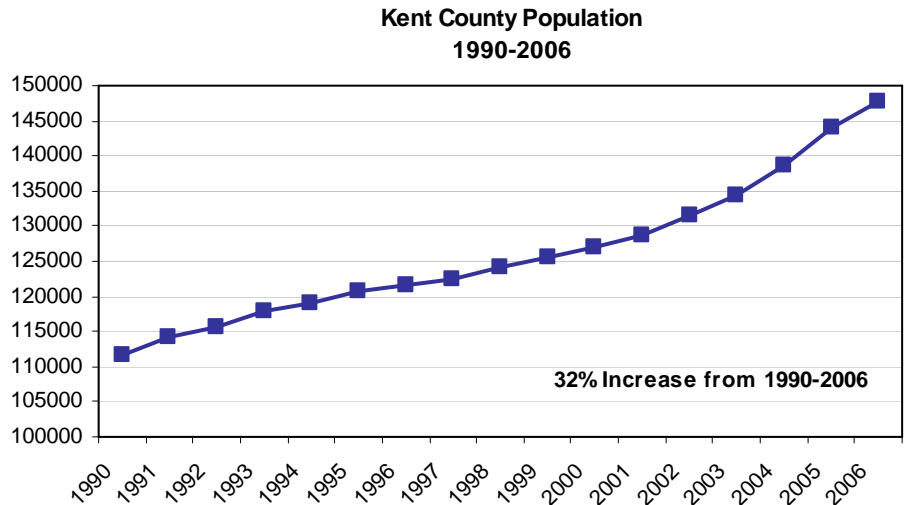
Over half of Delaware's population resides in New Castle County.

**Percent of Population by County
Delaware, 2006**



Source: Delaware Health Statistics Center

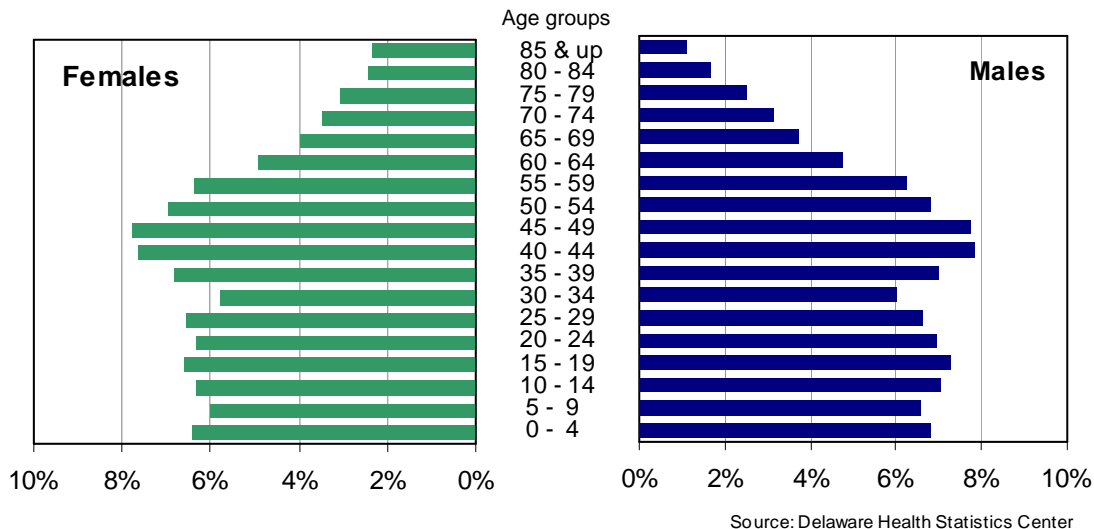
Delaware Resident Population by County, 1990-2006



Source: Delaware Health Statistics Center

POPULATION

Just over 50 percent of Delaware's population was female in 2006. Females made up a greater proportion of the older age groups, which reflects the longer female life expectancy. Delaware females born in 2006 could expect to live an average of 81.0 years, versus males, who could expect to live 75.7 years.



When the population was broken down by race, the higher proportion of females in the older age groups appeared in the black population as well. However, both black males and females had a greater percentage of their population in the 0-39 year age range than whites; in the 45 and above age range, whites made up a greater proportion of the population.

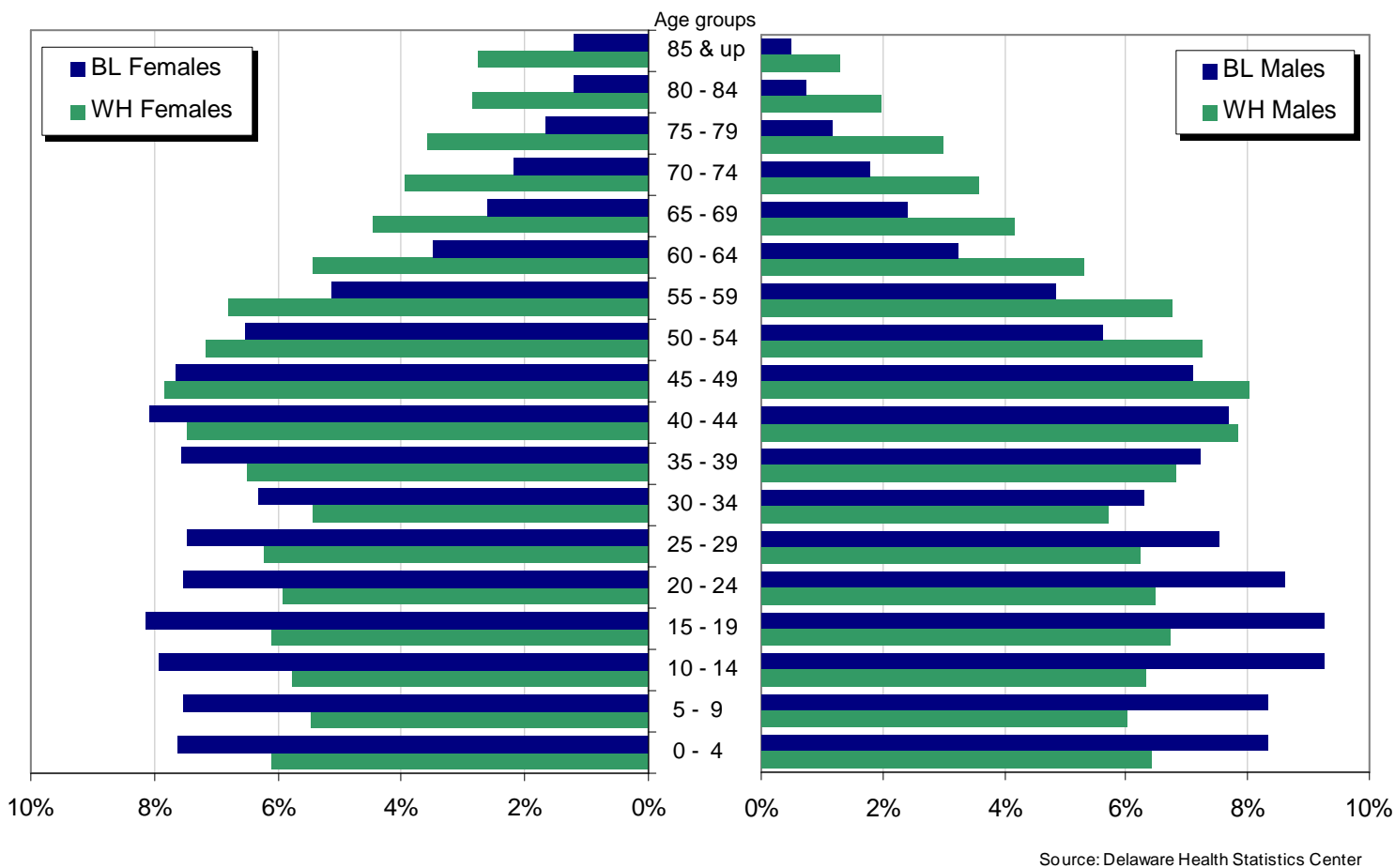


TABLE A-1
PERCENT CHANGE IN POPULATION BY SEX

DELAWARE, COUNTIES, CITY OF DOVER, CITY OF NEWARK, AND CITY OF WILMINGTON, 1970-2020

Area/ Sex	1970	1980	% Change 1970-1980	1990	% Change 1980-1990	2000	% Change 1990-2000	2010*	% Change 2000-2010	2020*	% Change 2010-2020	% Change 2000-2020
Delaware	548104	594338	8.4	666168	12.1	786418	18.1	893184	13.6	977645	9.5	24.3
Male	267332	286599	7.2	322966	12.7	381490	18.1	433374	13.6	474029	9.4	24.3
Female	280772	307739	9.6	343202	11.5	404928	18.0	459810	13.6	503616	9.5	24.4
Kent	81892	98219	19.9	110993	13.0	127103	14.5	157404	23.8	175717	11.6	38.2
Male	41337	48254	16.7	54300	12.5	61300	12.9	75897	23.8	84659	11.5	38.1
Female	40555	49965	23.2	56693	13.5	65803	16.1	81507	23.9	91058	11.7	38.4
Dover	17488	23512	34.4	27630	17.5	32084	16.1	36620	14.1	39605	8.2	23.4
Male	8319	11695	40.6	13408	14.6	15090	12.5	17057	13.0	18206	6.7	20.6
Female	9169	11817	28.9	14222	20.4	16994	19.5	19563	15.1	21399	9.4	25.9
New Castle	385856	398115	3.2	441946	11.0	501856	13.6	541350	7.9	575162	6.2	14.6
Male	187124	191176	2.2	213869	11.9	243427	13.8	262586	7.9	278655	6.1	14.5
Female	198732	206939	4.1	228077	10.2	258429	13.3	278764	7.9	296507	6.4	14.7
Newark	20757	25247	21.6	26463	4.8	29037	9.7	30741	5.9	31359	2.0	8.0
Male	10242	11993	17.1	12408	3.5	13352	7.6	14357	7.5	14648	2.0	9.7
Female	10515	13254	26.0	14055	6.0	15685	11.6	16384	4.5	16711	2.0	6.5
Wilmington	80386	70195		71529	1.9	72714	1.7	72535	-0.2	71451	-1.5	-1.7
Male	36968	31458	-14.9	33249	5.7	34698	4.4	35344	1.9	35274	-0.2	1.7
Female	43418	38737	-10.8	38280	-1.2	38016	-0.7	37191	-2.2	36177	-2.7	-4.8
Sussex	80356	98004	22.0	113229	15.5	157459	39.1	194430	23.5	226766	16.6	44.0
Male	38871	47169	21.3	54797	16.2	76763	40.1	94891	23.6	110715	16.7	44.2
Female	41485	50835	22.5	58432	14.9	80696	38.1	99539	23.4	116051	16.6	43.8

Note:

*Numbers for this year are projections.

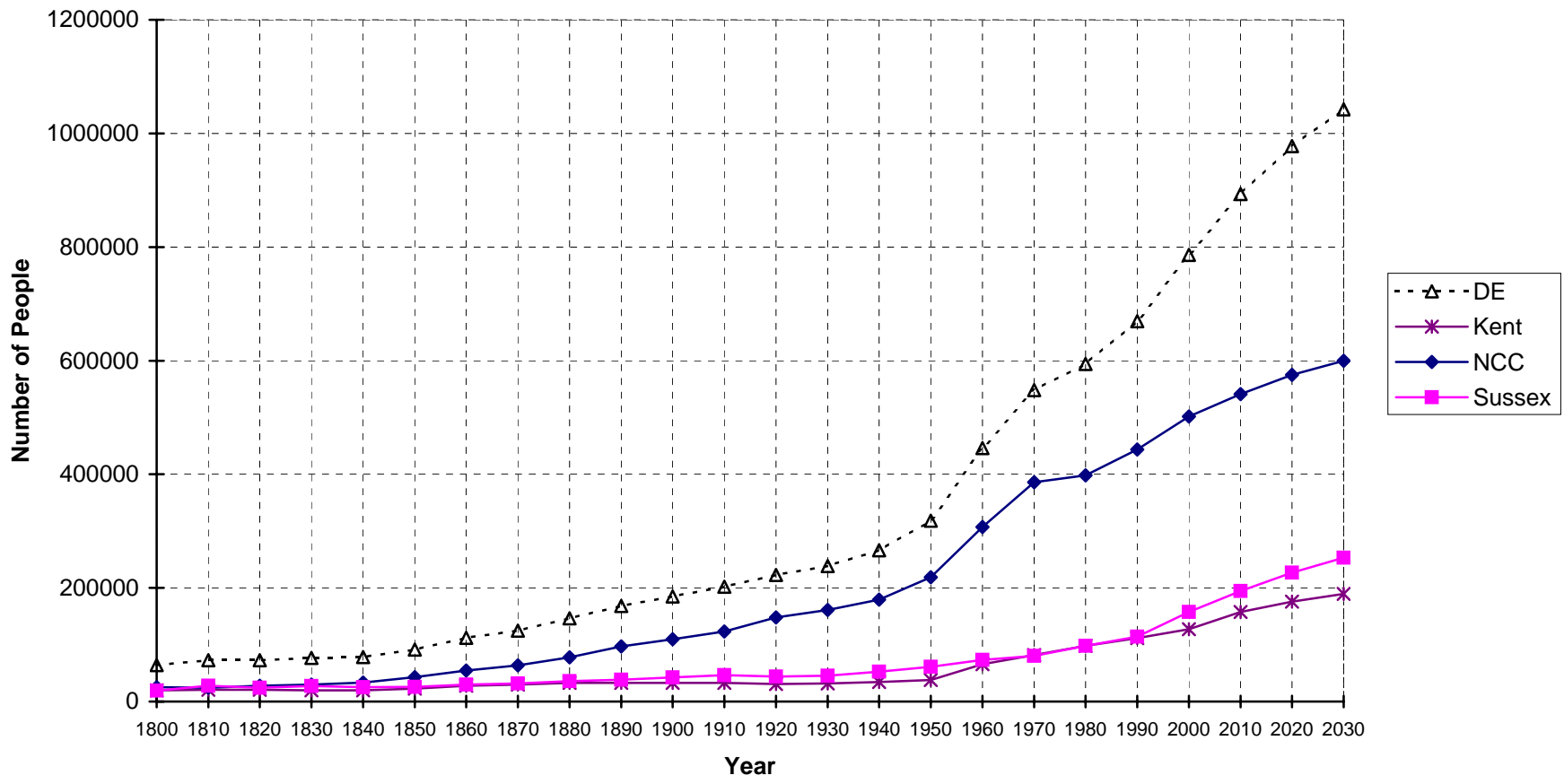
Sources:

Delaware Health Statistics Center
Delaware Population Consortium
U.S. Bureau of the Census

POPSEX

**Figure A-1
Population Growth**

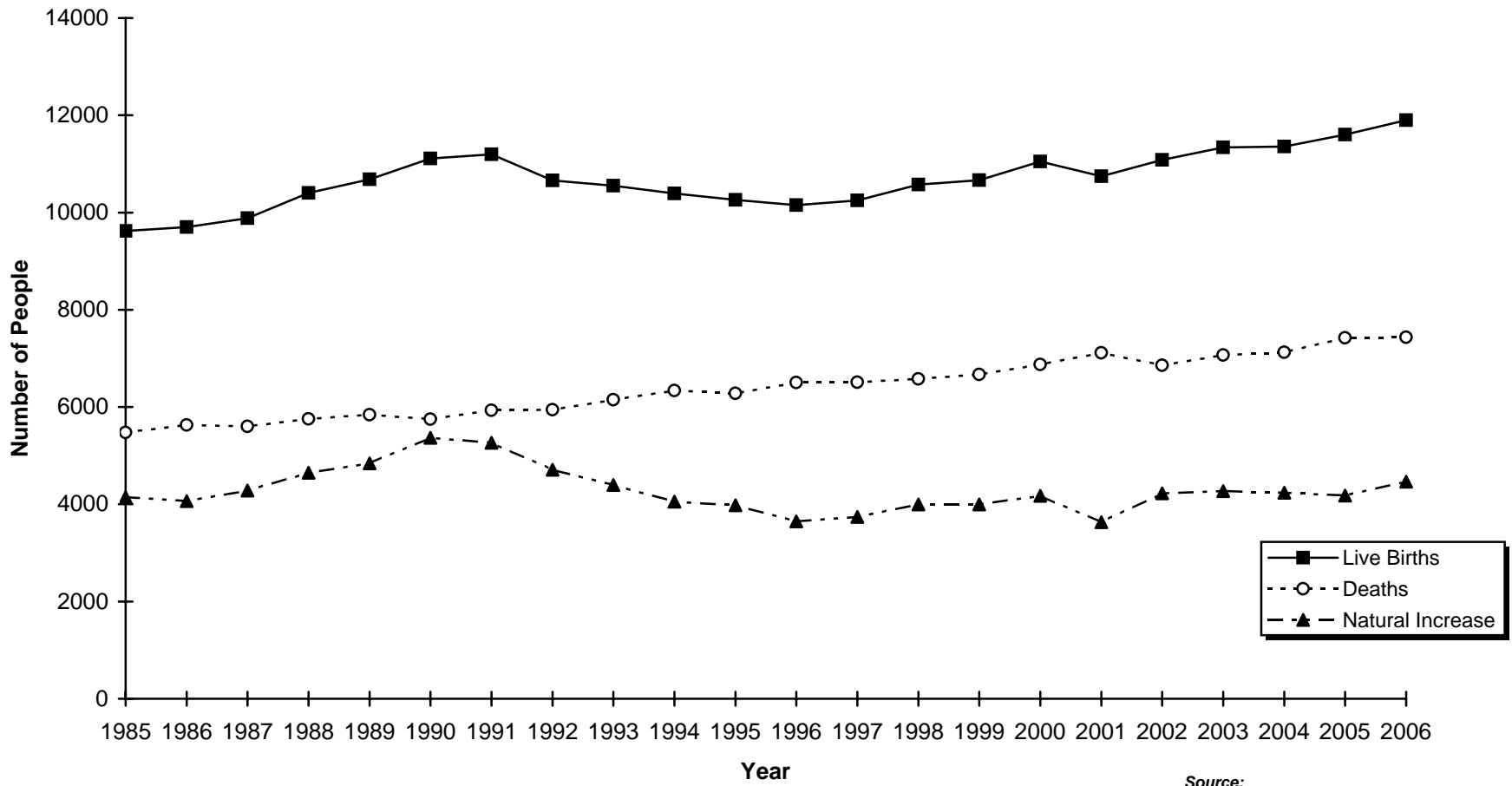
Delaware and Counties, 1800-2030



Sources:
Delaware Health Statistics Center
Delaware Population Consortium

Figure A-2
Live Births, Deaths, and Natural Increase

Delaware, 1985-2006



Source:
Delaware Health Statistics Center

TABLE A-2
POPULATION ESTIMATES BY SEX, RACE AND AGE

DELAWARE, COUNTIES, CITY OF DOVER, CITY OF NEWARK, AND CITY OF WILMINGTON, 2006

Area/ Sex/Race	Age																		
	Total	0-4	5-9	10-14	15-19	20-24	25-29	30-34	35-39	40-44	45-49	50-54	55-59	60-64	65-69	70-74	75-79	80-84	85+
Delaware	853447	56478	53891	56929	59228	56575	56270	50341	59062	66019	66287	58914	53950	41504	33041	28314	24053	17626	14965
Male	414052	28188	27368	29193	30223	28791	27453	24921	29012	32447	32158	28264	25927	19770	15465	12926	10444	6914	4588
White	312702	20090	18846	19830	21061	20258	19533	17830	21352	24550	25084	22690	21163	16565	13069	11168	9321	6191	4101
Black	86719	7223	7227	8040	8031	7462	6538	5458	6260	6668	6149	4884	4206	2820	2090	1553	1016	654	440
Female	439395	28290	26523	27736	29005	27784	28817	25420	30050	33572	34129	30650	28023	21734	17576	15388	13609	10712	10377
White	329918	20138	18070	19031	20172	19537	20556	17987	21454	24711	25914	23654	22464	17974	14741	13055	11854	9463	9143
Black	95489	7280	7211	7569	7783	7201	7140	6033	7239	7725	7314	6245	4910	3332	2482	2092	1606	1159	1168
Kent	147587	10432	10199	10702	11313	10871	10292	8728	9884	11517	11232	9509	8485	6490	5313	4519	3581	2482	2038
Male	71157	5209	5119	5511	5720	5403	5011	4137	4823	5531	5400	4489	4128	3088	2440	2087	1525	943	593
White	53321	3736	3614	3861	4058	3765	3359	3083	3665	4299	4277	3561	3255	2536	1980	1699	1290	793	490
Black	15980	1340	1335	1498	1499	1513	1489	886	1014	1062	976	840	793	507	418	351	219	140	100
Female	76430	5223	5080	5191	5593	5468	5281	4591	5061	5986	5832	5020	4357	3402	2873	2432	2056	1539	1445
White	56465	3736	3520	3679	3983	3816	3257	3279	3746	4532	4445	3806	3376	2721	2336	1962	1726	1318	1227
Black	17813	1353	1393	1361	1457	1522	1879	1123	1144	1265	1228	1071	854	598	459	409	286	203	208
Dover	34735	2364	2092	2181	3189	3718	2388	2041	2033	2308	2342	2082	1875	1416	1230	1116	973	712	676
Male	16231	1196	1095	1071	1533	1805	1150	946	961	1081	1035	977	844	656	557	490	359	278	197
Female	18504	1168	996	1110	1656	1913	1239	1095	1072	1227	1307	1106	1031	760	673	626	614	434	479
New Castle	525578	35889	34026	35923	37314	35290	37512	33097	38768	41857	41359	36168	31985	23256	17349	14487	12637	9878	8783
Male	254948	17890	17324	18376	19097	17993	18101	16559	19015	20680	20057	17384	15272	10960	8134	6448	5296	3755	2607
White	185763	12491	11557	11996	12848	12318	12943	11499	13527	15101	15136	13503	12011	8734	6520	5330	4608	3316	2325
Black	58097	4775	4809	5379	5401	4862	4124	3810	4396	4632	4231	3344	2834	1915	1377	966	608	388	246
Female	270630	17999	16702	17547	18217	17297	19411	16538	19753	21177	21302	18784	16713	12296	9215	8039	7341	6123	6176
White	195848	12548	10993	11565	12218	11832	14173	11279	13479	14900	15576	13935	12831	9712	7322	6536	6238	5341	5370
Black	64306	4828	4804	5130	5205	4653	4385	4194	5179	5432	5055	4292	3400	2270	1649	1347	1010	715	758
Newark	30014	909	947	1158	5711	8223	1825	1264	1081	1265	1499	1411	1228	921	717	585	532	428	312
Male	13970	470	502	589	2238	3892	992	679	524	641	741	678	581	447	312	238	219	153	74
Female	16044	439	445	569	3473	4331	833	585	557	624	758	733	647	474	405	347	312	275	238
Wilmington*	72826	5761	4609	5067	5386	5362	5485	5732	5560	5303	5074	4531	3942	2784	2178	1858	1571	1283	1340
Male	35216	2942	2395	2631	2717	2734	2793	2954	2758	2673	2459	2185	1828	1236	906	738	545	399	322
White	12489	900	563	471	599	834	1047	1455	1138	940	887	847	787	588	379	306	287	235	227
Black	20260	1824	1621	1919	1888	1641	1457	1272	1420	1586	1466	1243	940	592	491	410	245	156	89
Female	37610	2820	2214	2436	2669	2628	2691	2778	2801	2630	2615	2346	2114	1548	1272	1120	1026	884	1018
White	12782	846	502	411	531	733	945	1248	927	729	790	833	839	675	521	458	552	552	688
Black	22569	1763	1548	1818	1933	1649	1534	1330	1678	1759	1714	1413	1185	820	706	630	453	320	315
Sussex	180282	10157	9666	10304	10601	10414	8466	8516	10410	12645	13696	13237	13480	11758	10379	9308	7835	5266	4144
Male	87947	5089	4925	5306	5406	5395	4341	4225	5174	6236	6701	6391	6527	5722	4891	4391	3623	2216	1388
White	73618	3863	3675	3973	4155	4175	3231	3248	4160	5150	5671	5626	5897	5295	4569	4139	3423	2082	1286
Black	12642	1108	1083	1163	1131	1087	925	762	850	974	942	700	579	398	295	236	189	126	94
Female	92335	5068	4741	4998	5195	5019	4125	4291	5236	6409	6995	6846	6953	6036	5488	4917	4212	3050	2756
White	77605	3854	3557	3787	3971	3889	3126	3429	4229	5279	5893	5913	6257	5541	5083	4557	3890	2804	2546
Black	13370	1099	1014	1078	1121	1026	876	716	916	1028	1031	882	656	464	374	336	310	241	202

Note:

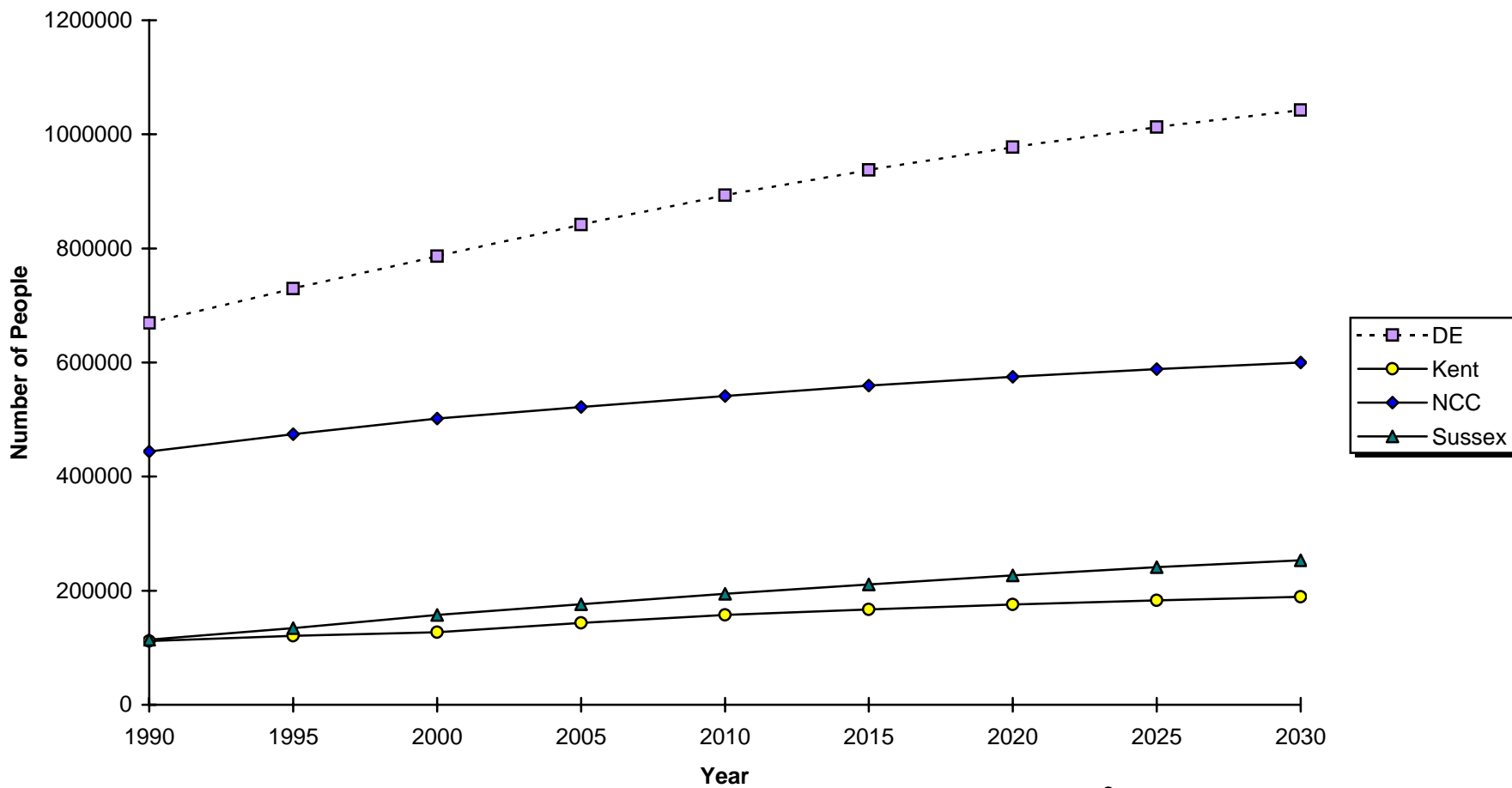
*Race estimates for the City of Wilmington are illustrative and should be interpreted with caution.

POPSRA

Sources:

Delaware Health Statistics Center
Delaware Population Consortium

Figure A-3
Projected Population Growth
Delaware and Counties, 1990-2030



Sources:
Delaware Health Statistics Center
Delaware Population Consortium