

Healthy Communities Delaware & the Innovation Fund

Network of community and investment partners working to improve health, well-being and equity

Backbone Managed as a Public-Private Partnership among:

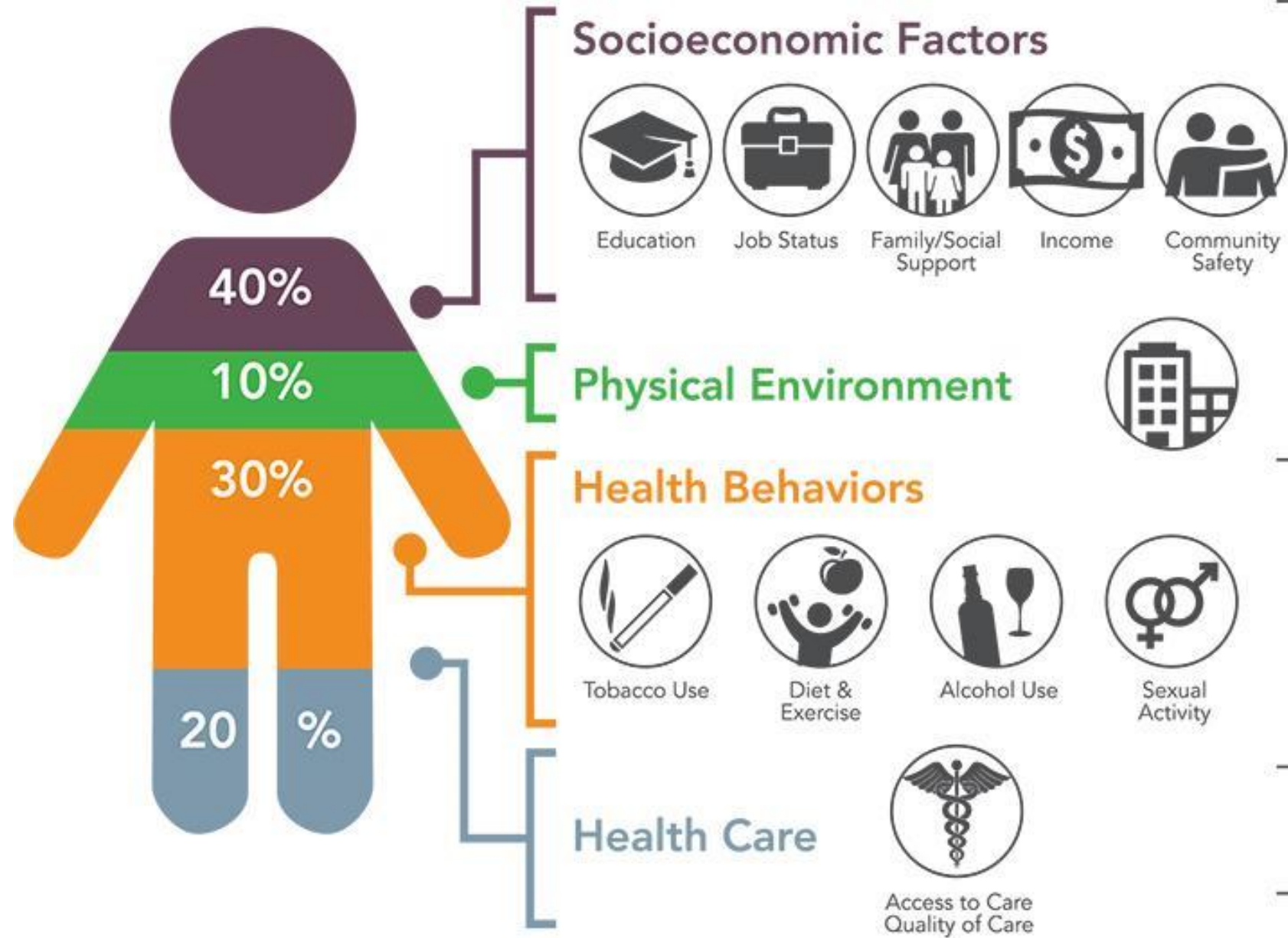
- Delaware Division of Public Health
- Delaware Community Foundation
- University of Delaware Partnership for Healthy Communities

Photo: WestSide, Wilmington. Latin American Community Center.



Place matters
for our well-being

80% of our health is influenced by factors outside of the healthcare system



Vital Conditions/SDOH for Well-Being and Equity

What makes a healthy, safe and vibrant community of opportunity?

Community **Vital Conditions/SDOH**:
What **all people** need **all the time** to thrive and reach our full potential.

HCD partners with communities to accelerate improvements in vital conditions/SDOH.

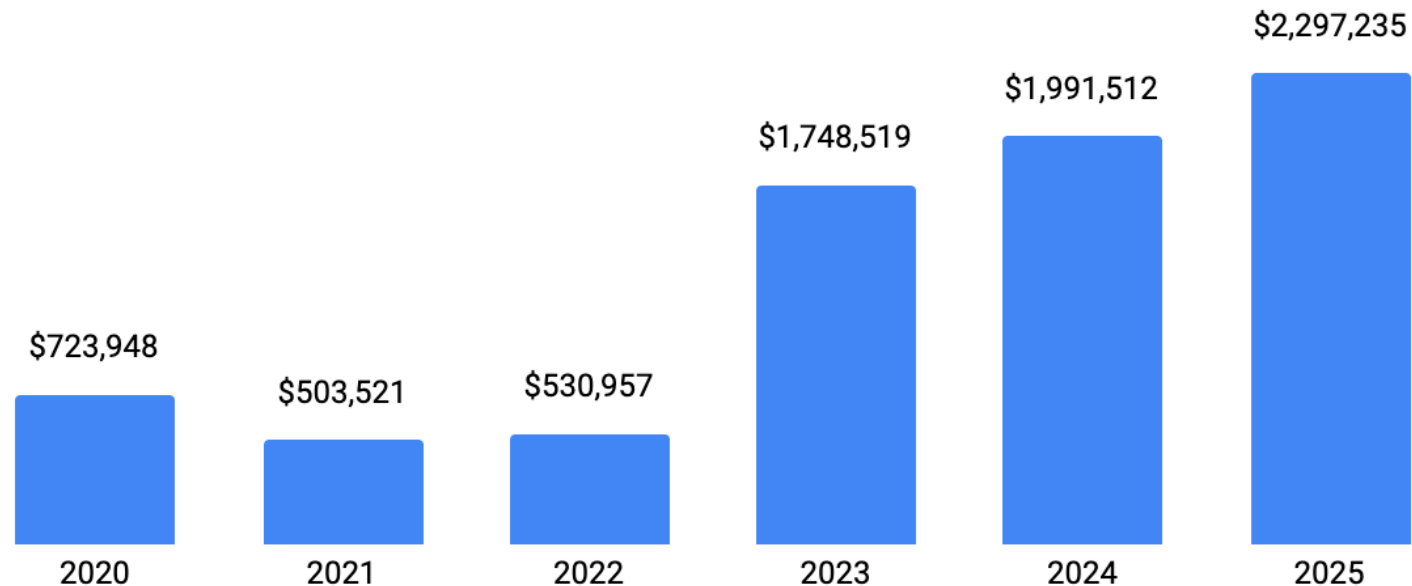


VITAL CONDITIONS

Innovation Fund Investment in HCD Communities

- **\$7.79 Million** distributed to HCD Communities through the HCD Community Investment Process
- **\$4.2 Million** additional distributed (fed. funds) on behalf of DPH, using the HCD infrastructure to achieve equitable and rapid distribution of funds
- **15 HCD Communities** and **23 Partner Organizations** received support for place-based, resident-led community revitalization efforts
- **78 Community-Driven Projects** funded through HCD community investment process

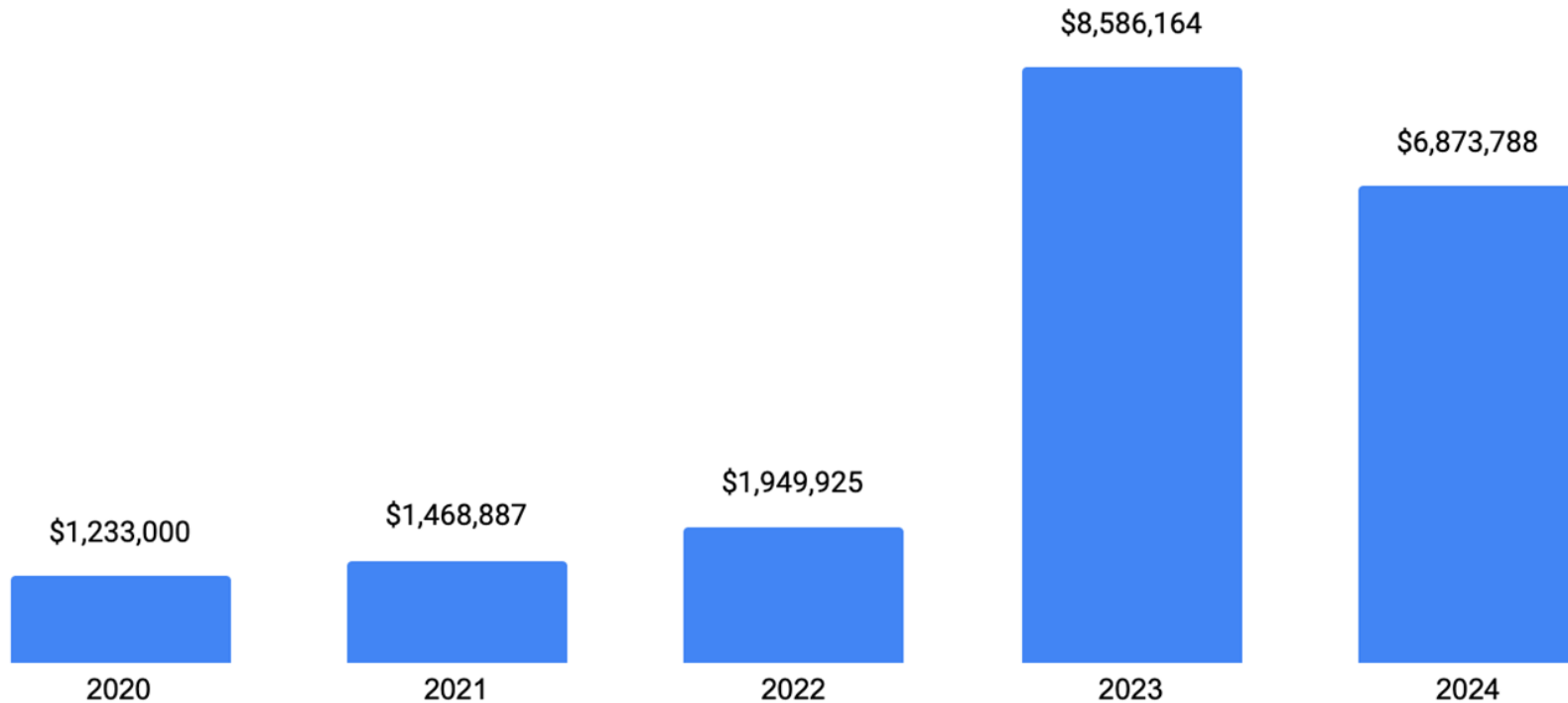
Investment via HCD Community Investment Process
FY 2020 - FY 2025



Additional Funding Obtained by HCD Partners: FY20 – FY24

Since FY 2020, HCD partners obtained **over \$20 million in additional funding** from other sources that **increases the impact of HCD investments**.

Additional Funding Obtained by HCD Partners
FY 2020 - FY 2024



Alignment for Sustained Investment

HCD invests in the community-based infrastructure needed for equitable change.

15 geographic communities

23 community-based partners

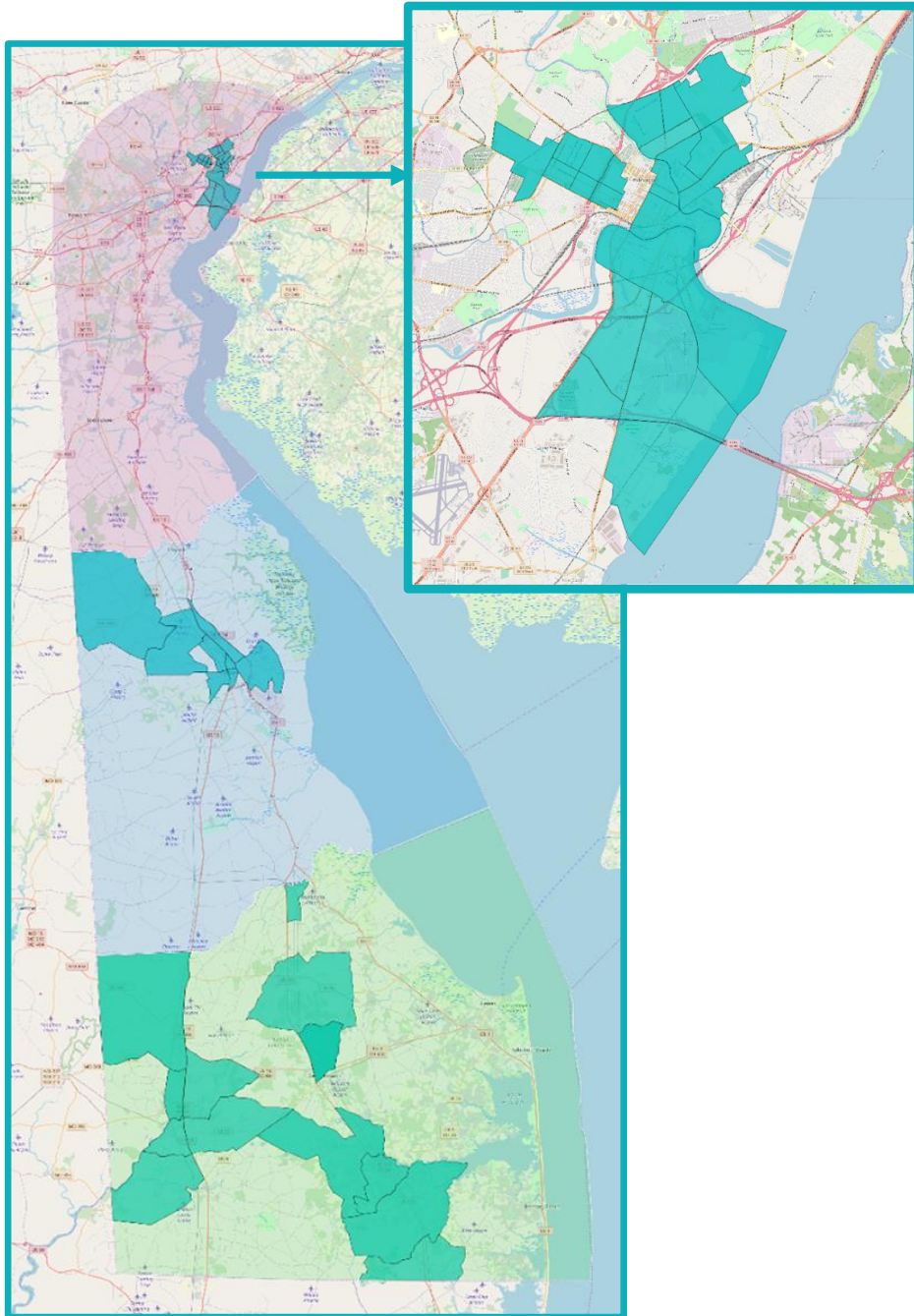
6 investment partners



DELAWARE HEALTH
AND SOCIAL SERVICES
Division of Public Health



HCD Community Partners FY20-25



KENT COUNTY

Cheswold/Lenape Census District
Greenbridge CDC

Dover
NeighborGood Partners
Central Delaware Habitat for Humanity

SUSSEX COUNTY

Ellendale/New Hope Rd.
SERCAP

Georgetown
The Springboard Collaborative

Seaford
Seaford Community of Hope (CFF)

Bridgeville
Town of Bridgeville
Cornerstone Community Center

Georgetown, Bridgeville, Seaford, Milford
La Esperanza

NEW CASTLE COUNTY

West Side, Wilmington
Be Ready CDC
Cornerstone West CDC
Latin American Community Center

Eastside, Wilmington
Central Baptist CDC
Habitat for Humanity of New Castle County

Northeast, Wilmington
Collaborate Northeast
Northeast Community Development Corporation
Habitat for Humanity of New Castle County

West Center City, Wilmington
Wilmington Alliance

Southbridge, Wilmington
Southbridge CDC
South Wilmington Planning Network

Northwest, Wilmington
Jefferson Street Center

Rt. 9 Corridor, New Castle
Rt. 9 Master Plan Monitoring Committee
Rt. 9 CDC (formerly New Castle Prevention Coalition)

Collective Community Transformation Progress, FY 2020 - 2024

Assessments & Action Plans

- 5 comprehensive community assessments and 4 action plans
- 7 housing plans and 3 assessments
- 1 child care center plan
- 2 healthy food access assessments and plans
- 4 park/playground plans and 1 assessment
- 4 vacant lot assessments and 2 plans
- 1 commercial property assessment
- 2 plans for community spaces
- 2 plans for career training programs
- 6 COVID assessments and action plans

Implementation Activities

- 6 units of affordable housing created
- 40 units of transitional housing created/renovated
- 305 minor home repair services
- 79 homes received critical repairs
- 7 community gardens created
- 2 new child care centers created
- 2 new farmers market
- 3 parks/playgrounds revitalized
- 5 vacant lots revitalized
- 2 commercial spaces created/renovated
- 35 works of community art installed/maintained
- 2 community spaces created
- 50 adults received resident leadership training
- 72 youth and 8 adults received career training
- 3 businesses/worker cooperatives created
- 38 jobs created
- 1 road diet piloted

HCD Support and Funding Enables Partners to Build their Capacity for Community Transformation

Quotes from HCD Community Partners

100% of Partners reported that HCD funding and support helped them build their capacity to advance their community's vision and plan.

- “Continued resource sharing - education, contacts, and general support are a huge help to smaller organizations trying to create large-scale change. And it’s incredibly valuable - and unique to HCD. We've worked with many grant organizations and have never had this kind of support!”
- “HCD has guided many of our most productive partnership relationships and connections. This has led to incredibly innovative work in both concept and practice.”
- “HCD's workshops, monthly meetings, and educational/networking events are gold for our multifaceted organization.”
- “HCD offers a great set of supports to community development organizations across Delaware and has filled a void by systematically working to strengthen the sector. ”

EXAMPLE: West Side, Wilmington

Be Ready Community Development Corporation



Year 1 (July '20 – June '21)	Year 2 (July '21 – June '22)	Year 3 (July '22– June '23)	Year 4 (July '23– June '24)
Increased capacity to support community change 1 staff member employed	Increased capacity to support community change 2 staff members employed	Increased capacity to support community change 3 staff members employed	Increased capacity to support community change 4 staff members employed
Increased affordable housing 6 units of affordable & accessible rental housing built/occupied Plans for 12 units of affordable rental housing completed Completed repairs to 3 transitional housing units		Increased affordable housing Fundraising for 12 units of affordable rental housing	Increased affordable housing Funding for 12 units of affordable rental housing secured 7 units of transitional housing units renovated Plans for 3 affordable homeownership properties completed
Increased economic development 16,000 sq ft of commercial space complete 1 commercial lease signed with small business incubator		Increased economic development Plans for 4,250 sq. ft. of commercial space	
	Increased civic muscle & leadership Supported civic association	Increased civic muscle & leadership Formal civic association leadership structure established and increased resident membership	Increased civic muscle & leadership Civic association capacity continues to grow 6 community dinners hosted

Thank you!

We thank the Health Fund Advisory Council for its investments to improve health equity in Delaware, and hope that you will continue to invest in HCD and our partner communities.

We are working together to create healthy, safe and vibrant communities across Delaware, so that ALL people have the opportunity to thrive.



Healthy Communities Delaware
alignment. investment. impact.