



## Delaware Weekly Influenza Report Week 05 (January 26 – February 1, 2014) Delaware Division of Public Health

### National Synopsis 2013 – 2014

National data are updated Friday of each week. Please visit <http://www.cdc.gov/flu/weekly/> for the most current information. Briefly, influenza activity is high in the Delaware and the United States. Twenty-nine states reported widespread activity; 19 states reported regional activity; D.C. and 1 state reported local activity; 1 state, Guam, and Puerto Rico reported sporadic activity; and the U.S. Virgin Islands did not report.

Surrounding states in our region reported widespread (PA, MD, VA, and WV) and local (D.C.) influenza activity.

Both national and state data are provisional and subject to change as additional reports are received.

### Delaware Influenza Surveillance 2013 – 2014

Overall, flu activity remains high in Delaware. There were 104 confirmed cases of influenza reported during week 05. Reports of influenza-like illness (ILI) received from participating providers, facilities, and institutions indicate increased levels of ILI in their facilities or population. The level of ILI reported by sentinel providers participating in ILINet was approximately 2.5%, above the regional baseline of 2.0%.

### Level of Influenza Activity<sup>1</sup> in Delaware, Week 5

#### **Widespread**

**Widespread:** Outbreaks of influenza or increases in ILI cases and recent laboratory-confirmed<sup>2</sup> influenza in at least half the regions of the state with recent laboratory evidence of influenza in the state.

Influenza-like illness (ILI) is defined as patients presenting with fever of 100° F or greater, cough and/or sore throat in the absence of a known cause other than influenza.

**No Activity:** No laboratory-confirmed<sup>2</sup> cases of influenza and no reported increase in the number of cases of ILI.

**Sporadic:** Small numbers of laboratory-confirmed<sup>2</sup> influenza cases or a single laboratory-confirmed influenza outbreak has been reported, but there is no increase in cases of ILI.

**Local:** Outbreaks of influenza or increases in ILI cases and recent laboratory-confirmed<sup>2</sup> influenza in a single region of the state.

**Regional:** This level does not apply to Delaware. Per CDC, regional does not apply to states with  $\leq 4$  regions<sup>3</sup>.

**Widespread:** Outbreaks of influenza or increases in ILI cases and recent laboratory-confirmed<sup>2</sup> influenza in at least half the regions of the state with recent laboratory evidence of influenza in the state.

<sup>1</sup> Activity levels may not be comparable across states because some states may use different definitions for lab confirmation of influenza cases. Some states may include rapid diagnostic tests as confirmatory while Delaware considers viral culture or PCR as confirmatory.

<sup>2</sup> Laboratory confirmed case= case confirmed by viral culture or PCR.

<sup>3</sup> Region= population under surveillance in a defined geographical subdivision of a state. Regions typically include several counties.

**Table 1a. Influenza positive<sup>1</sup> cases reported<sup>2</sup>, statewide and by county.**

Confirmed Flu Cases by Subtype		Wk 40-48	Wk 49	Wk 50	Wk 51	Wk 52	Wk 01	Wk 02	Wk 03	Wk 04	Wk 05	YTD	YTD Total	YTD County%
Statewide	A (2009 H1)	15	4	8	22	39	57	74	109	121	70	519	655	100%
	A (H3)	1	1	0	1	1	2	1	2	2	0	11		
	A (subtyping not performed)	2	2	3	5	6	8	16	18	23	33	117		
	B	4	1	0	1	0	0	0	0	0	1	1		
New Castle County	A (2009 H1)	4	0	2	5	9	26	36	46	52	13	193	256	39%
	A (H3)	1	0	0	1	1	1	0	0	1	0	5		
	A (subtyping not performed)	0	0	0	0	1	4	9	11	10	17	53		
	B	2	1	0	1	0	0	0	0	0	0	0		
Kent County	A (2009 H1)	2	1	1	8	14	19	26	51	53	32	207	250	38%
	A (H3)	0	1	0	0	0	0	1	1	0	0	3		
	A (subtyping not performed)	2	1	1	2	4	1	4	4	10	11	40		
	B	0	0	0	0	0	0	0	0	0	0	0		
Sussex County	A (2009 H1)	9	3	5	9	16	12	12	12	16	25	119	149	23%
	A (H3)	0	0	0	0	0	1	0	1	1	0	3		
	A (subtyping not performed)	0	1	2	3	1	3	3	3	3	5	24		
	B	2	0	0	0	0	0	0	0	0	1	0		

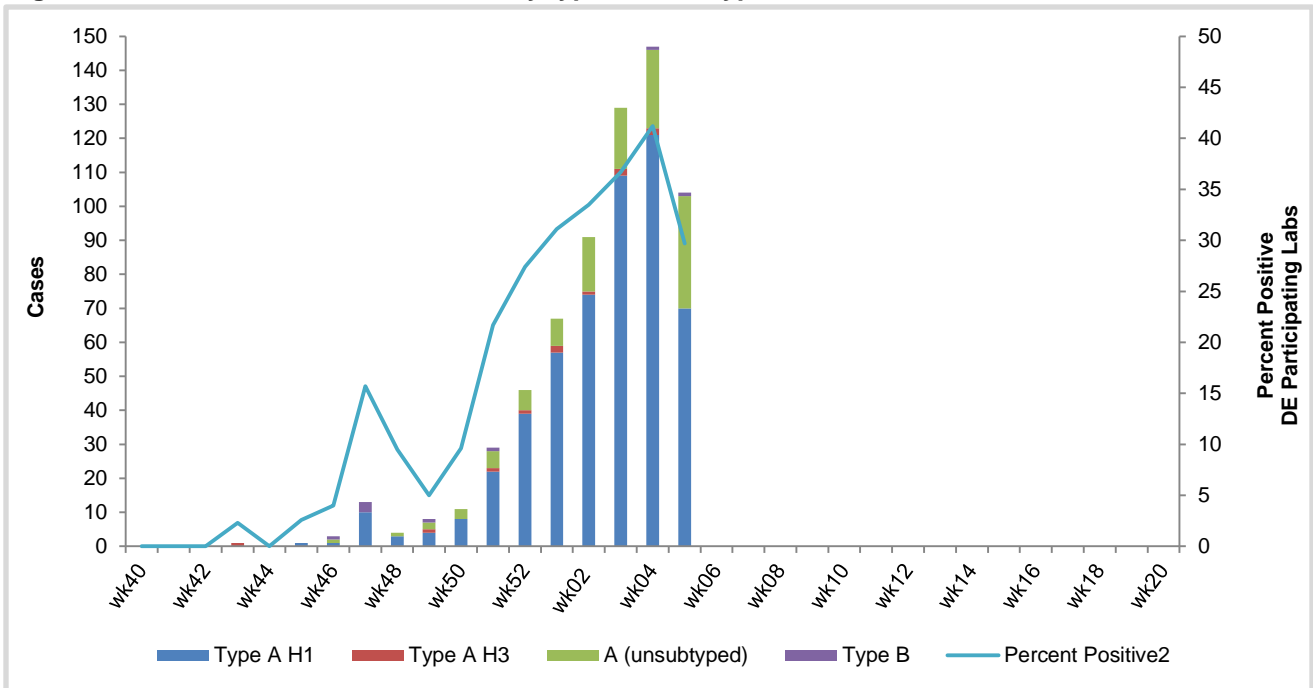
**Table 1b. Age subgroup-specific influenza positive cases.**

Confirmed Flu Cases by Age Group		Wk 40-48	Wk 49	Wk 50	Wk 51	Wk 52	Wk 01	Wk 02	Wk 03	Wk 04	Wk 05	YTD	YTD Total	YTD County%
Statewide	0-4 years	9	2	3	6	13	12	18	19	29	14	125	655	100%
	5-24 years	2	2	0	6	13	12	21	40	35	27	158		
	25-49 years	8	4	7	9	14	24	29	46	52	38	231		
	50-64 years	3	0	1	3	6	15	21	17	23	19	108		
	65+ years	0	0	0	5	0	4	2	8	8	6	33		
New Castle County	0-4 years	3	0	1	1	3	7	9	5	16	1	46	250	39%
	5-24 years	1	0	0	3	4	7	9	14	15	4	57		
	25-49 years	2	1	1	3	3	7	15	26	19	15	92		
	50-64 years	1	0	0	0	1	9	10	7	9	8	45		
	65+ years	0	0	0	0	0	1	2	6	4	3	16		
Kent County	0-4 years	1	2	0	3	6	2	5	8	9	7	43	256	38%
	5-24 years	0	0	0	1	2	3	10	20	15	14	65		
	25-49 years	3	1	2	4	6	8	10	17	24	14	89		
	50-64 years	0	0	0	0	4	5	6	9	12	5	41		
	65+ years	0	0	0	2	0	2	0	2	3	3	12		
Sussex County	0-4 years	5	0	2	2	4	3	4	6	4	6	36	149	23%
	5-24 years	1	2	0	2	7	2	2	6	5	9	36		
	25-49 years	3	2	4	2	5	9	4	3	9	9	50		
	50-64 years	2	0	1	3	1	1	5	1	2	6	22		
	65+ years	0	0	0	3	0	1	0	0	1	0	5		

<sup>1</sup>Based on patients with positive nucleic acid or viral culture test results reported to the Division of Public Health.

<sup>2</sup>Reports are by date of specimen collection, not the date the results are obtained. As a result, prior weeks' counts may be adjusted to reflect additional cases received.

**Figure 1. Confirmed cases<sup>1</sup> of influenza by type and subtype, Delaware 2013-2014 Influenza Season.**



<sup>1</sup> Based on patients with positive nucleic acid or viral culture test results reported to the Delaware Division of Public Health. There were 104 confirmed case of influenza reported during MMWR 05. Confirmed cases are reported for the date the specimen was collected; not the data that positive test result was reported; this is different from the percent positive calculation.

<sup>2</sup> Percent positive= (number of specimens PCR positive for flu reported during the week) / (total number of specimens submitted during the week); lab data reflect the date the test result was reported and not the date that the specimen was collected. The percent positive reflects only the percent testing positive for specimens submitted by WHO/NREVSS Collaborating Laboratories in Delaware (includes Christiana Care and the Delaware Public Health Laboratory). The percent positive does not reflect specimens tested by hospitals not participating in the WHO/NERVSS Collaborating Labs in Delaware.

**Table 2. Influenza-related hospitalizations, Delaware 2013-2014**

Flu Related Hospitalizations	Wks 40-48	Wk 49	Wk 50	Wk 51	Wk 52	Wk 01	Wk 02	Wk 03	Wk 04	Wk 05	YTD	YTD Total	YTD County%	
Statewide	0-4 years	0	0	0	3	5	2	3	3	3	22	130	100%	
	5-24 years	0	0	0	0	1	1	2	6	2	15			
	25-49 years	0	0	0	0	0	4	5	9	8	4			30
	50-64 years	1	0	0	0	3	6	9	6	10	6			41
	65+ years	0	0	0	2	0	2	2	5	6	5			22
New Castle County	0-4 years	0	0	0	1	3	1	1	1	3	11	77	59%	
	5-24 years	0	0	0	0	0	1	2	4	1	9			
	25-49 years	0	0	0	0	0	2	5	7	4	2			20
	50-64 years	0	0	0	0	1	5	8	2	6	5			27
	65+ years	0	0	0	0	0	0	2	3	2	3			10
Kent County	0-4 years	0	0	0	2	2	0	2	1	0	8	42	32%	
	5-24 years	0	0	0	0	1	0	0	2	1	6			
	25-49 years	0	0	0	0	0	0	0	2	3	1			6
	50-64 years	0	0	0	0	2	0	1	4	4	1			12
	65+ years	0	0	0	1	0	2	0	2	3	2			10
Sussex County	0-4 years	0	0	0	0	0	1	0	1	0	3	11	8%	
	5-24 years	0	0	0	0	0	0	0	0	0	0			
	25-49 years	0	0	0	0	0	2	0	0	1	1			4
	50-64 years	1	0	0	0	0	1	0	0	0	0			2
	65+ years	0	0	0	1	0	0	0	0	1	0			2

**Table 3. Influenza-related deaths, Delaware 2013-2014**

Flu- Related Deaths	Wk 40-48	Wk 49	Wk 50	Wk 51	Wk 52	Wk 01	Wk 02	Wk 03	Wk 04	Wk 05	Cumulative
	0	0	0	0	0	0	1	0	0	0	1

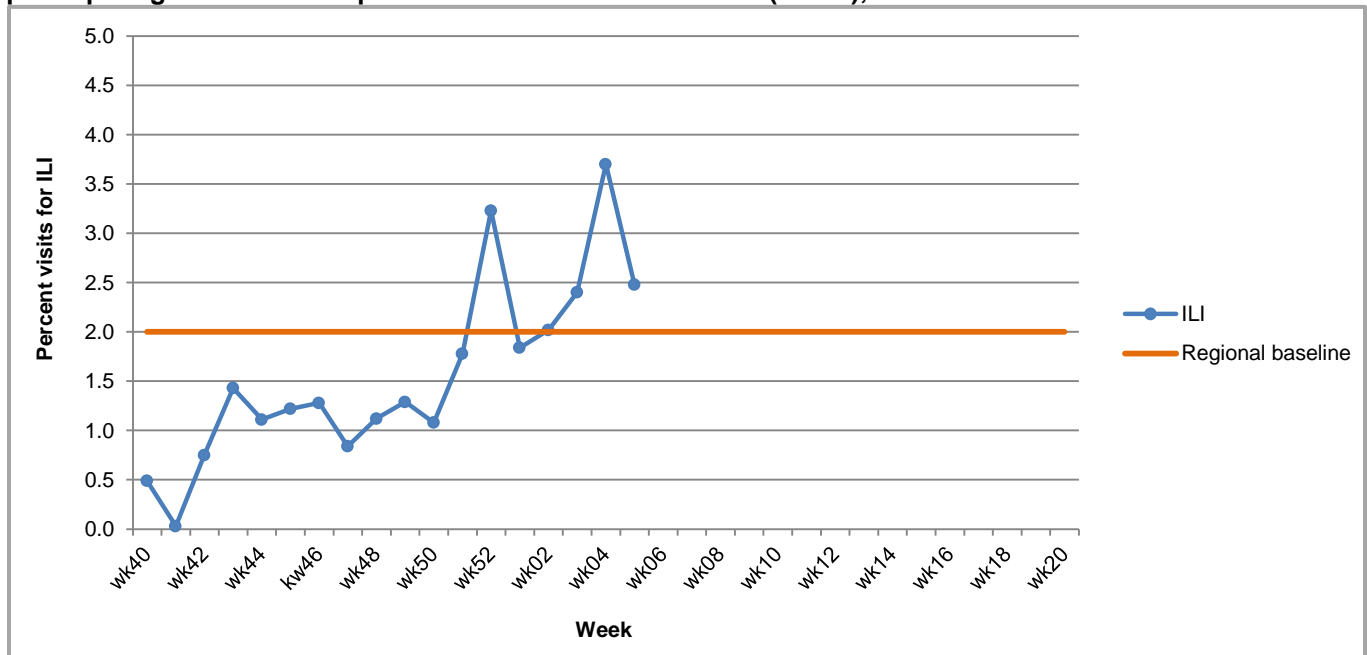
**Table 4. Annual number of influenza cases reported by flu season, Delaware 2004 – 2013.**

Influenza Season	Annual Flu Case Totals
2004 – 2005	995
2005 – 2006	541
2006 – 2007	508
2007 – 2008	1401
2008 – 2009	738
2009 – 2010	2247
2010 – 2011	1470
2011 – 2012	262
2012 – 2013	1773
2013 – 2014 (YTD)	655

**U.S. Outpatient Influenza-like Illness Surveillance Network (ILINet) (Sentinel) Provider Surveillance Network:**

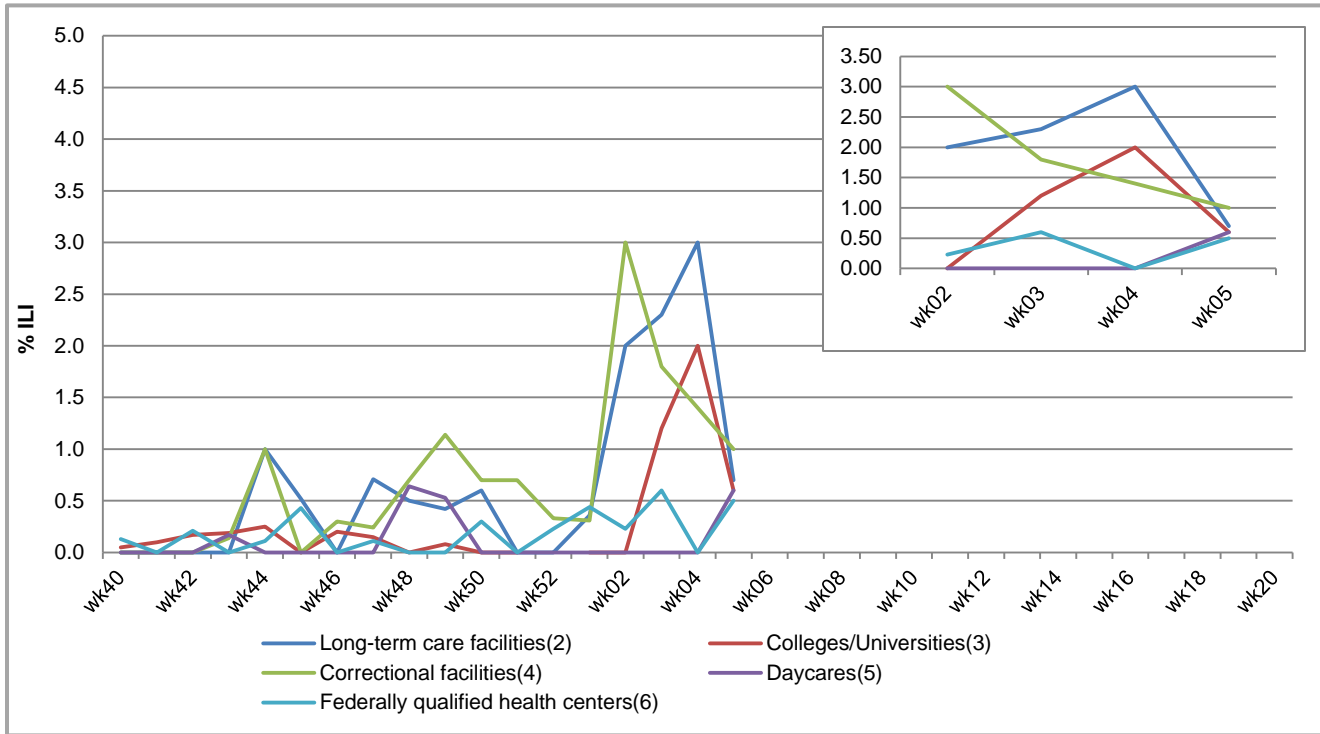
An ILINet (sentinel) provider conducts surveillance of influenza-like illness (ILI) in collaboration with the Division of Public Health and the Centers for Disease Control and Prevention (CDC). Data reported by ILINet providers, in combination with other influenza surveillance data, provide a national and statewide picture of influenza activity in the U.S.

**Figure 2. Percentage of visits for influenza-like illness (ILI) reported by sentinel healthcare providers<sup>1</sup> participating in the U.S. Outpatient ILI Surveillance Network (ILINet), Delaware 2013-2014.**



<sup>1</sup> Eleven of 11 sentinel providers reported during Week 05. Data are subject to change as additional reports are received.  
<sup>2</sup> Regional baseline is calculated by CDC using non-influenza weeks from the previous 3 influenza seasons. Delaware is a member of Region 3 and includes DE, DC, MD, PA, VA, and WV. Regional baseline= 2.0%.

**Figure 3. Influenza-Like Illness (ILI) reported by influenza surveillance reporting partners<sup>1</sup>, Delaware 2013-2014.**



<sup>1</sup> Reporting partners include long-term care facilities, colleges and universities, correctional facilities, daycares, and federally qualified health centers.

<sup>2</sup> % ILI= percentage of residents with ILI symptoms. Nine of 19 LTCFs reported for MMWR 05.

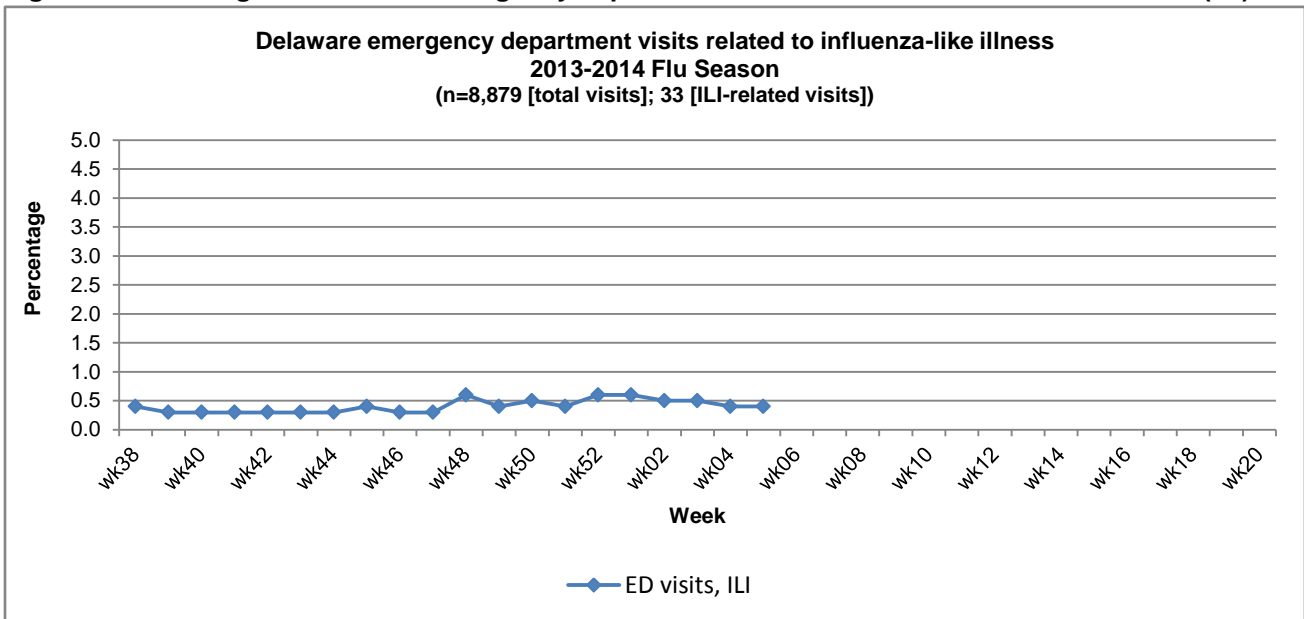
<sup>3</sup> % ILI= percentage of student visits for ILI. Schools reporting include the University of Delaware, Delaware State University, and Wesley College.

<sup>4</sup> % ILI= percentage of visits for ILI at the correctional facility. Ten of 10 facilities reported for MMWR 05.

<sup>5</sup> % ILI= percentage of children absent with ILI. One of 12 daycare providers reported for MMWR 05.

<sup>6</sup> % ILI= percentage of visits for ILI at FQHCs. FQHCs reporting include LARED and Henrietta Johnson Medical Center.

**Figure 4. Percentage of Delaware emergency department visits related to Influenza-like Illness (ILI).**



**NOTE:** Data provided do not reflect the total number of individuals who have been infected with the influenza virus in Delaware during the reporting period as a result of the following factors:

- Many people ill with influenza-like symptoms do not seek medical care.
- Many who do seek medical care are not tested for influenza.
- The Delaware Public Health Laboratory (DPHL) is limited by capacity to processing a maximum of 3 specimens per day from each reporting entity.

The Division of Public Health (DPH) is committed to serving you better. Please visit us at [flu.delaware.gov](http://flu.delaware.gov) or <http://dhss.delaware.gov/dhss/dph/dpc/immunize-flu.html> for general information on the flu or specific information on DPH flu clinics. For questions on Delaware's weekly flu report, please call the Office of Infectious Disease Epidemiology at 302-744-1033. For questions regarding influenza vaccination information, please call 302-744-1060.