



Infant Mortality

2004

BLANK

Infant Mortality Highlights

<u>Key Indicators</u>	<u>Period</u>	<u>Delaware</u>	<u>U.S.</u>	<u>Recent Trend in Delaware*</u>
Infant Mortality				
• Deaths to children under one year of age per 1,000 live births (See Table E-4)	2000-2004	9.3	6.9	Increasing Slightly
Neonatal Mortality				
• Deaths under 28 days of age per 1,000 live births (See Table E-5)	2000-2004	6.7	4.6	Stable
Postneonatal Mortality				
• Deaths to children 28 to 364 days of age per 1,000 live births (See Table E-6)	2000-2004	2.6	2.3	Increasing Slightly

* Trend over last 3 to 4 time periods.

Key Facts

- Infants born to mothers who received late or no prenatal care had a mortality rate of 25.8 compared to that of infants born to mothers who received prenatal care in the first trimester (8.2). (See Table E-8).
- Infants born weighing less than 1500 grams (3 lbs 5 oz) had a mortality rate of 302.4 compared to 2.4 for infants born weighing 2500 grams (5 lbs 8 oz) or more. (See Table E-8).
- Infants born to mothers under 20 years of age had a higher mortality rate (11.7) than infants born to mothers 20 years of age and older (8.6). (See Table E-8).
- Infants born to single mothers had a higher mortality rate (11.7) than infants born to married mothers (7.2). (See Table E-8).

BLANK

TABLE E-1
NUMBER OF INFANT DEATHS BY RACE

U.S., DELAWARE, COUNTIES AND CITY OF WILMINGTON, 1987-2004

Area/ Race	1987	1988	1989	1990	1991	1992	1993	1994	1995	1996	1997	1998	1999	2000	2001	2002	2003	2004
U.S.																		
All Races	38408	38910	39655	38351	36766	34628	33466	31710	29583	28237	28045	28371	27937	28035	27568	28034	28025	27838*
White	25810	25925	25794	24883	23657	22164	21497	20504	19490	18749	18539	18561	18067	18144	17955	18369	18440	18240*
Black	11461	11840	12527	12290	11994	11348	10887	10072	9118	8490	8496	8726	8822	8771	8498	8524	8402	8359*
Other	1137	1145	1334	1178	1115	1116	1082	1134	975	998	1010	1084	1048	1120	1115	1141	1183	1239*
Delaware																		
All Races	116	121	128	110	136	93	94	70	79	77	81	103	81	102	114	96	107	97
White	69	71	77	58	79	44	44	40	46	43	42	54	31	65	60	57	53	51
Black	47	49	51	52	55	49	50	27	32	32	36	49	49	37	53	35	53	44
Other	0	1	0	0	2	0	0	3	1	2	3	0	1	0	1	4	1	2
Kent																		
All Races	19	27	17	30	18	19	11	15	18	17	14	18	10	21	19	27	16	17
White	13	16	10	17	9	12	5	10	10	11	4	13	4	16	10	22	8	8
Black	6	11	7	13	8	7	6	5	7	6	10	5	6	5	9	5	8	8
Other	0	0	0	0	1	0	0	0	1	0	0	0	0	0	0	0	0	1
New Castle																		
All Races	78	72	81	68	98	66	68	37	45	48	48	65	61	67	72	55	78	60
White	46	43	47	33	59	29	32	20	24	21	26	27	22	40	37	30	37	33
Black	32	28	34	35	38	37	36	15	21	26	20	38	38	27	35	22	40	27
Other	0	1	0	0	1	0	0	2	0	1	2	0	1	0	0	3	1	0
Wilmington																		
All Races	32	26	29	25	34	27	24	15	11	19	14	18	20	16	17	12	18	12
White	9	7	7	2	11	4	4	3	2	1	4	2	4	4	2	2	4	4
Black	23	19	22	23	23	23	20	11	9	18	10	16	16	12	15	10	14	8
Other	0	0	0	0	0	0	0	1	0	0	0	0	0	0	0	0	0	0
Balance of NC County																		
All Races	46	46	52	43	64	39	44	22	34	29	34	47	41	51	55	43	60	48
White	37	36	40	31	48	25	28	17	22	20	22	25	18	36	35	28	33	29
Black	9	9	12	12	15	14	16	4	12	8	10	22	22	15	20	12	26	19
Other	0	1	0	0	1	0	0	1	0	1	2	0	1	0	0	3	1	0
Sussex																		
All Races	19	22	30	12	20	8	15	18	16	12	19	20	10	14	23	14	13	20
White	10	12	20	8	11	3	7	10	12	11	12	14	5	9	13	5	8	10
Black	9	10	10	4	9	5	8	7	4	0	6	6	5	5	9	8	5	9
Other	0	0	0	0	0	0	0	1	0	1	1	0	0	0	1	1	0	1

Notes:

1. *Based on NCHS estimate.
2. Infant deaths refer to deaths to children under one year of age.

Sources:

National Center for Health Statistics
Delaware Health Statistics Center

INFANT1

TABLE E-2
NUMBER OF NEONATAL DEATHS BY RACE

U.S., DELAWARE, COUNTIES AND CITY OF WILMINGTON, 1987-2004

Area/ Race	1987	1988	1989	1990	1991	1992	1993	1994	1995	1996	1997	1998	1999	2000	2001	2002	2003	2004
U.S.																		
All Races	24627	24690	25168	24309	22978	21849	21174	20250	19155	18326	18524	18918	18728	18776	18265	18749	18893	18532*
White	16448	16346	16428	15751	14698	13915	13506	13100	12644	12252	12269	12406	12164	12201	12013	12354	12495	12238*
Black	7520	7695	8021	7905	7677	7296	7044	6499	5940	5483	5637	5824	5920	5843	5585	5646	5640	5495*
Other	659	649	719	653	603	638	624	651	571	591	618	688	644	732	667	749	758	799*
Delaware																		
All Races	81	90	93	76	90	64	69	48	47	53	55	74	58	71	82	79	75	63
White	49	49	60	40	55	33	33	28	26	28	26	33	21	45	44	48	36	33
Black	32	40	33	36	34	31	36	18	20	24	27	41	37	26	37	28	38	28
Other	0	1	0	0	1	0	0	2	1	1	2	0	0	0	1	3	1	2
Kent																		
All Races	17	16	7	19	12	11	6	7	10	13	10	9	8	15	15	22	8	11
White	12	8	3	13	5	9	2	3	6	7	1	6	3	11	10	18	3	5
Black	5	8	4	6	6	2	4	4	3	6	9	3	5	4	5	4	5	5
Other	0	0	0	0	1	0	0	0	1	0	0	0	0	0	0	0	0	1
New Castle																		
All Races	58	56	67	46	66	47	56	28	26	33	33	47	44	50	54	47	56	39
White	34	33	40	20	43	21	27	17	12	14	19	15	14	29	27	26	27	21
Black	24	22	27	26	23	26	29	9	14	18	13	32	30	21	27	19	28	18
Other	0	1	0	0	0	0	0	2	0	1	1	0	0	0	0	2	1	0
Wilmington																		
All Races	25	23	24	20	22	19	17	10	6	14	6	12	14	13	14	9	10	9
White	8	7	7	2	10	3	2	3	0	1	3	1	2	4	1	1	1	3
Black	17	16	17	18	12	16	15	6	6	13	3	11	12	9	13	8	9	6
Other	0	0	0	0	0	0	0	1	0	0	0	0	0	0	0	0	0	0
Balance of NC County																		
All Races	33	33	43	26	44	28	39	18	20	19	27	35	30	37	40	38	46	30
White	26	26	33	18	33	18	25	14	12	13	16	14	12	25	26	25	26	18
Black	7	6	10	8	11	10	14	3	8	5	10	21	18	12	14	11	19	12
Other	0	1	0	0	0	0	0	1	0	1	1	0	0	0	0	2	1	0
Sussex																		
All Races	6	18	19	11	12	6	7	13	11	7	12	18	6	6	13	10	11	13
White	3	8	17	7	7	3	4	8	8	7	6	12	4	5	7	4	6	7
Black	3	10	2	4	5	3	3	5	3	0	5	6	2	1	5	5	5	5
Other	0	0	0	0	0	0	0	0	0	0	1	0	0	0	1	1	0	1

Notes:

- *Based on NCHS estimate.
- Neonatal deaths refer to deaths to children under 28 days of age.

Sources:

National Center for Health Statistics
Delaware Health Statistics Center

INFANT2

TABLE E-3
NUMBER OF POSTNEONATAL DEATHS BY RACE

U.S., DELAWARE, COUNTIES AND CITY OF WILMINGTON, 1987-2004

Area/ Race	1987	1988	1989	1990	1991	1992	1993	1994	1995	1996	1997	1998	1999	2000	2001	2002	2003	2004
U.S.																		
All Races	13781	14220	14487	14042	13788	12779	12292	11460	10428	9911	9521	9453	9209	9259	9303	9285	9132	9306*
White	9362	9579	9366	9132	8959	8249	7991	7404	6846	6497	6270	6155	5903	5943	5942	6015	5945	6002*
Black	3941	4145	4506	4385	4317	4052	3843	3573	3178	3007	2859	2902	2902	2928	2913	2878	2762	2864*
Other	478	496	615	525	512	478	458	483	404	407	392	396	404	388	448	392	425	440*
Delaware																		
All Races	35	31	35	34	46	29	25	22	32	24	26	29	23	31	32	17	32	34
White	20	22	17	18	24	11	11	12	20	15	16	21	10	20	16	9	17	18
Black	15	9	18	16	21	18	14	9	12	8	9	8	12	11	16	7	15	16
Other	0	0	0	0	1	0	0	1	0	1	1	0	1	0	0	1	0	0
Kent																		
All Races	2	11	10	11	6	8	5	8	8	4	4	9	2	6	4	5	8	6
White	1	8	7	4	4	3	3	7	4	4	3	7	1	5	0	4	5	3
Black	1	3	3	7	2	5	2	1	4	0	1	2	1	1	4	1	3	3
Other	0	0	0	0	0	0	0	0	0	0	0	0	0	0	0	0	0	0
New Castle																		
All Races	20	16	14	22	32	19	12	9	19	15	15	18	17	17	18	8	22	21
White	12	10	7	13	16	8	5	3	12	7	7	12	8	11	10	4	10	12
Black	8	6	7	9	15	11	7	6	7	8	7	6	8	6	8	3	12	9
Other	0	0	0	0	1	0	0	0	0	0	1	0	1	0	0	1	0	0
Wilmington																		
All Races	7	3	5	5	12	8	7	5	5	5	8	6	6	3	3	3	8	3
White	1	0	0	0	1	1	2	0	2	0	1	1	2	0	1	1	3	1
Black	6	3	5	5	11	7	5	5	3	5	7	5	4	3	2	2	5	2
Other	0	0	0	0	0	0	0	0	0	0	0	0	0	0	0	0	0	0
Balance of NC County																		
All Races	13	13	9	17	20	11	5	4	14	10	7	12	11	14	15	5	14	18
White	11	10	7	13	15	7	3	3	10	7	6	11	6	11	9	3	7	11
Black	2	3	2	4	4	4	2	1	4	3	0	1	4	3	6	1	7	7
Other	0	0	0	0	1	0	0	0	0	0	1	0	1	0	0	1	0	0
Sussex																		
All Races	13	4	11	1	8	2	8	5	5	5	7	2	4	8	10	4	2	7
White	7	4	3	1	4	0	3	2	4	4	6	2	1	4	6	1	2	3
Black	6	0	8	0	4	2	5	2	1	0	1	0	3	4	4	3	0	4
Other	0	0	0	0	0	0	0	1	0	1	0	0	0	0	0	0	0	0

Notes:

- *Based on NCHS estimate.
- Postneonatal deaths refer to deaths to children 28 to 364 days of age.

Sources:

National Center for Health Statistics
Delaware Health Statistics Center

INFANT3

TABLE E- 4
 FIVE-YEAR AVERAGE INFANT MORTALITY RATES BY RACE
 U.S., DELAWARE, COUNTIES AND CITY OF WILMINGTON, 1984-2004

Area/ Race	1984 -1988	1985 -1989	1986 -1990	1987 -1991	1988 -1992	1989 -1993	1990 -1994	1991 -1995	1992 -1996	1993 -1997	1994 -1998	1995 -1999	1996 -2000	1997 -2001	1998 -2002	1999 -2003	2000 -2004
U.S.																	
All Races	10.4	10.2	9.9	9.6	9.3	9.0	8.6	8.3	8.0	7.7	7.5	7.3	7.1	7.0	7.0	6.9	6.9
White	9.0	8.7	8.3	8.0	7.7	7.3	7.0	6.8	6.5	6.4	6.2	6.0	5.9	5.8	5.8	5.7	5.7
Black	18.0	18.1	18.0	17.9	17.7	17.5	17.0	16.4	15.8	15.3	14.8	14.6	14.4	14.2	14.3	14.2	14.0
Delaware																	
All Races	12.1+	12.3+	11.3+	11.5+	10.9+	10.4+	9.3	8.9	7.9	7.8	7.9	8.1+	8.4+	9.0+	9.2+	9.1+	9.3+
White	9.6	9.9+	8.9	8.9	8.2	7.5	6.6	6.4	5.6-	5.6	5.9	5.7	6.2	6.6	6.9+	6.9+	7.3+
Black	20.6	20.7	19.6	20.0	19.8	19.9	18.2	17.0	15.7	14.7	14.4	15.8	15.9	17.1+	16.7+	16.7+	16.1
Kent																	
All Races	11.3	11.1	11.2	11.3	11.3	9.7	9.6	8.6	8.6	8.2	9.0	8.4	8.6	8.7	9.9	9.5	10.2
White	10.5	9.9	9.4	9.0	8.8	7.3	7.3	6.5	6.8	5.9	7.1	6.3	7.0	6.9	9.5	8.6	9.2
Black	14.4	15.6	17.7	19.0	19.9	17.9	17.6	15.5	15.1	16.5	15.9	15.7	14.3	15.2	12.7	13.4	13.9
New Castle																	
All Races	12.4	12.5	11.2	11.3	10.8	10.7	9.5	9.0	7.8	7.3	7.3	7.9	8.5	9.1	9.2	9.5	9.4
White	9.5	9.6	8.4	8.6	7.9	7.5	6.5	6.3	5.0	4.9	4.8	4.9	5.6	6.2	6.4	6.8	7.3
Black	23.2	23.1	21.1	20.8	20.8	21.7	19.8	18.3	17.5	15.3	15.1	17.4	17.7	18.2	18.0	18.0	16.5
Wilmington																	
All Races	N/A	N/A	20.9	20.4	19.6	19.5	18.0	16.6	15.2	13.6	12.8	13.7	14.4	14.0	13.5	13.5	12.4
White	N/A	N/A	16.2	14.1	12.3	11.2	9.7	10.1	6.2	6.4	5.6	6.2	7.0	7.4	6.3	7.1	7.0
Black	N/A	N/A	23.8	24.2	23.8	24.3	22.8	20.4	20.5	17.8	16.8	18.0	18.7	18.0	17.9	17.6	15.9
Balance of NC County																	
All Races	N/A	N/A	8.6	9.0	8.6	8.5	7.5	7.2	6.1	5.9	6.0	6.7	7.2	8.1	8.3	8.6	8.8
White	N/A	N/A	7.6	8.1	7.4	7.1	6.2	5.9	4.8	4.8	4.7	4.8	5.4	6.1	6.4	6.8	7.3
Black	N/A	N/A	17.3	16.4	17.1	18.5	16.3	16.0	14.4	12.9	13.6	16.8	16.8	18.5	18.1	18.2	17.0
Sussex																	
All Races	11.8	12.8	12.2	12.2	10.7	9.7	8.3	8.7	7.9	9.0	9.4	8.5	8.1	9.0	8.3	7.4	8.1
White	9.1	10.8	10.5	10.1	8.8	7.8	6.2	6.8	6.8	8.0	8.9	8.0	7.5	7.6	6.5	5.5	5.9
Black	18.5	18.0	16.8	18.0	16.1	15.3	13.7	13.9	10.4	11.1	10.4	9.9	10.4	14.4	15.9	15.4	16.9

INFANT4

Notes:

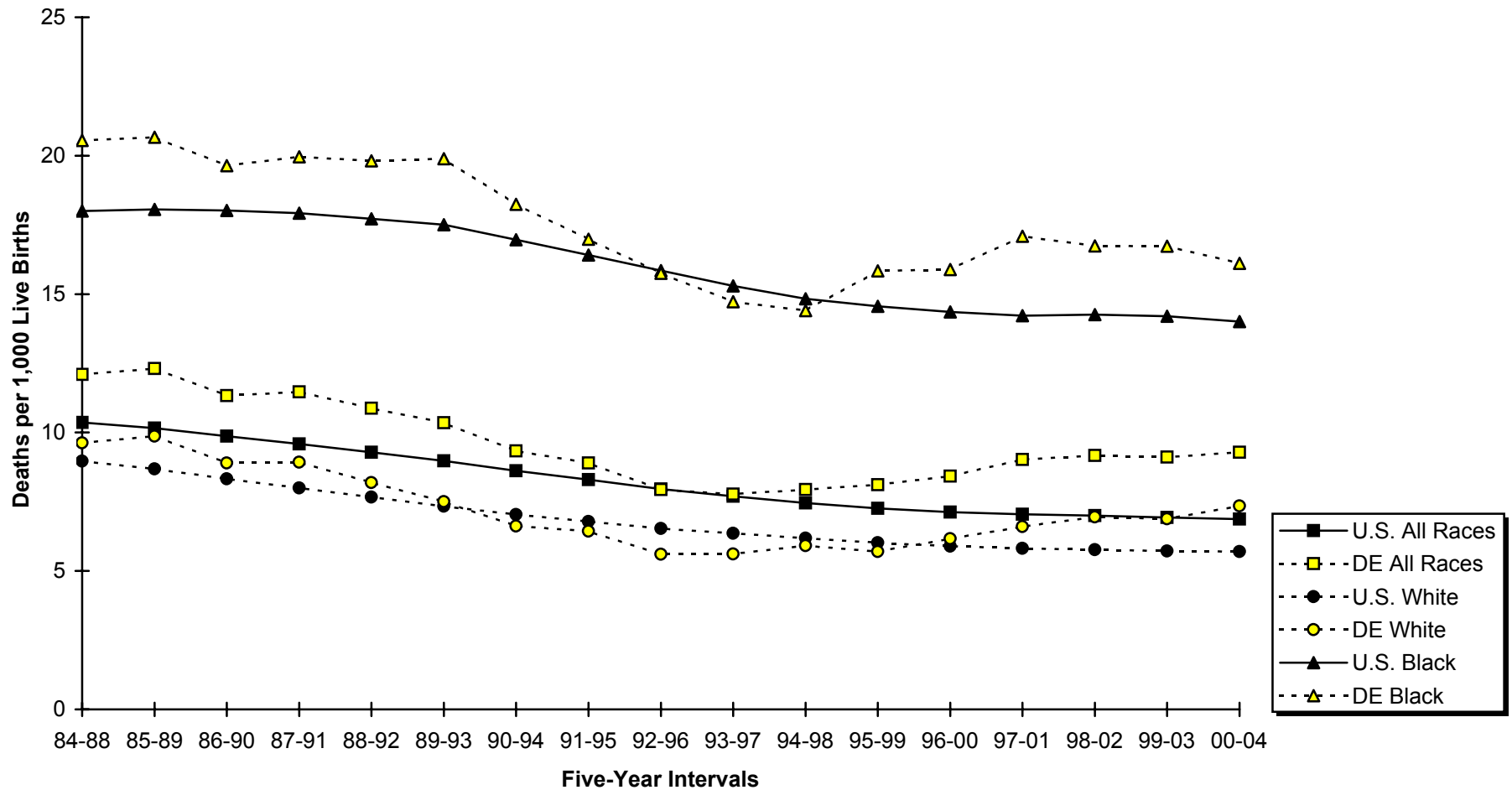
1. 2000-2004 US data are based on NCHS estimates.
2. N/A indicates data not available.
3. Infant mortality rates represent the number of deaths to children under one year of age per 1000 live births.
4. '+' indicates that the Delaware rate is significantly higher than the U.S. rate.
 '-' indicates that the Delaware rate is significantly lower than the U.S. rate.
5. No statistical comparisons were made between the county rates and the U.S. rate due to small numbers. See Appendix C for details.

Sources:

National Center for Health Statistics
 Delaware Health Statistics Center

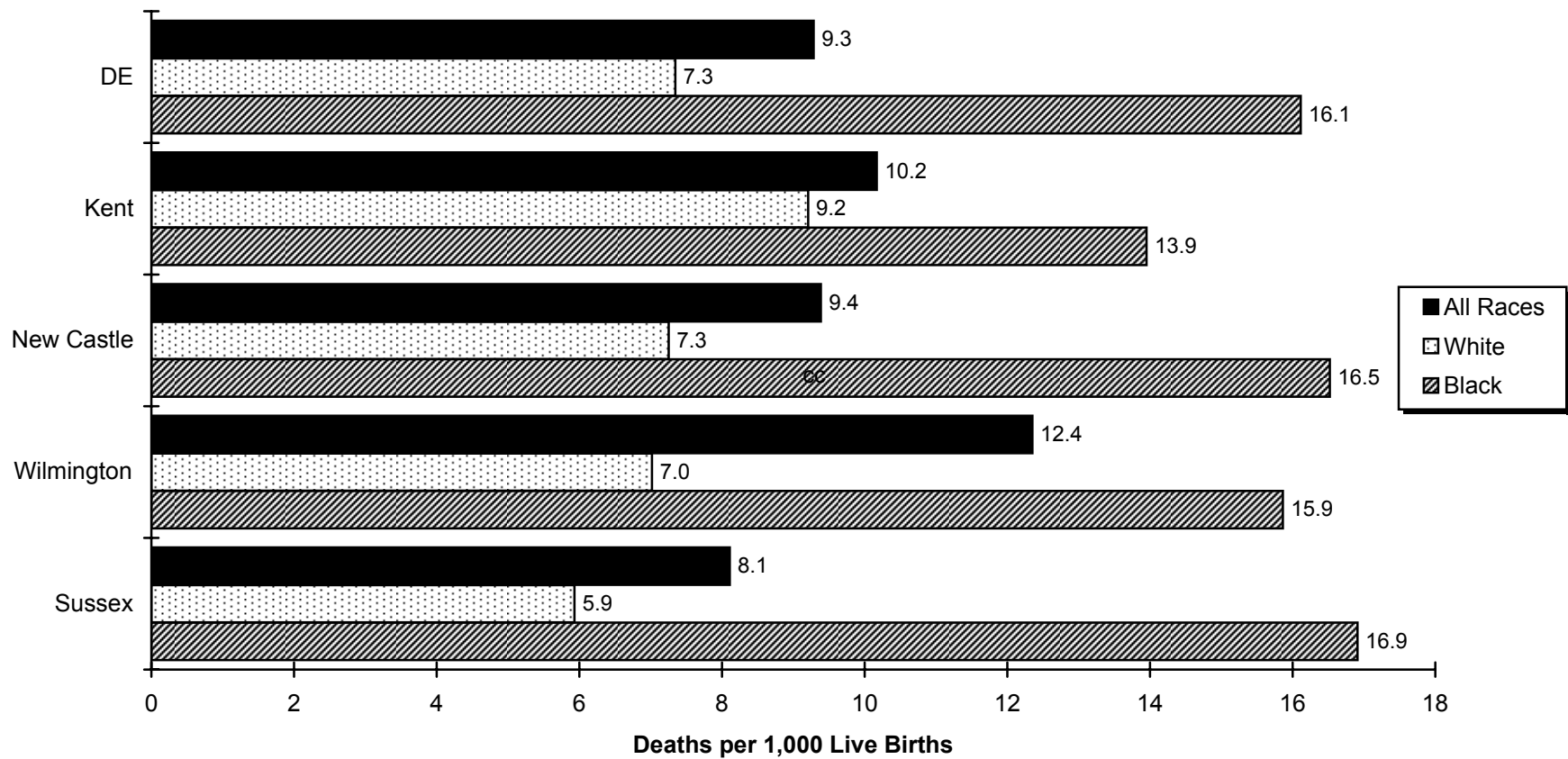
Figure E-1
Five-Year Average Infant Mortality Rates by Race

U.S. and Delaware, 1984-2004



Sources:
 Delaware Health Statistics Center
 National Center for Health Statistics

Figure E-2
Five-Year Average Infant Mortality Rates by Race
Delaware, Counties and the City of Wilmington, 2000-2004



Source:
 Delaware Health Statistics Center

TABLE E-5
 FIVE-YEAR AVERAGE NEONATAL MORTALITY RATES BY RACE
 U.S., DELAWARE, COUNTIES AND CITY OF WILMINGTON, 1984-2004

Area/ Race	1984 -1988	1985 -1989	1986 -1990	1987 -1991	1988 -1992	1989 -1993	1990 -1994	1991 -1995	1992 -1996	1993 -1997	1994 -1998	1995 -1999	1996 -2000	1997 -2001	1998 -2002	1999 -2003	2000 -2004
U.S.																	
All Races	6.7	6.5	6.3	6.1	5.9	5.7	5.4	5.3	5.1	5.0	4.9	4.8	4.7	4.7	4.7	4.6	4.6
White	5.8	5.6	5.3	5.1	4.8	4.6	4.4	4.3	4.2	4.1	4.0	4.0	3.9	3.9	3.9	3.9	3.8
Black	11.8	11.8	11.7	11.6	11.4	11.3	10.9	10.6	10.2	9.9	9.7	9.6	9.5	9.5	9.5	9.5	9.3
Delaware																	
All Races	8.8+	9.0+	8.2+	8.1+	7.6+	7.2+	6.4+	6.0+	5.4	5.3	5.4	5.5+	5.9+	6.4+	6.7+	6.7+	6.7+
White	7.0+	7.3+	6.5+	6.4+	5.9+	5.5+	4.7	4.5	3.8	3.7	3.7	3.5	4.0	4.4	5.0+	5.0+	5.3+
Black	14.8+	14.7+	14.1+	13.7+	13.5+	13.2	12.1	11.1	10.7	10.4	10.6	11.9+	12.1+	12.8+	12.7+	12.2+	11.4+
Kent																	
All Races	7.8	7.4	7.1	7.2	6.6	5.6	5.7	4.9	5.0	5.0	5.4	5.5	5.9	6.1	7.2	7.0	7.2
White	7.0	6.4	6.0	5.7	5.2	4.4	4.4	3.6	3.8	2.8	3.4	3.4	4.1	4.6	7.0	6.5	6.8
Black	10.2	10.7	11.2	12.2	11.3	9.6	9.9	8.9	9.3	12.7	12.0	12.0	12.1	11.3	8.9	9.3	9.2
New Castle																	
All Races	9.2	9.5	8.5	8.4	7.9	7.9	6.9	6.4	5.6	5.2	5.0	5.4	6.1	6.6	6.9	7.1	7.0
White	7.1	7.4	6.3	6.4	5.9	5.7	4.8	4.6	3.6	3.6	3.1	3.0	3.7	4.3	4.5	5.0	5.3
Black	17.0	17.4	16.2	15.2	15.0	15.8	13.9	12.6	12.4	10.8	10.8	13.0	13.5	14.2	14.5	13.9	12.4
Wilmington																	
All Races	N/A	N/A	16.8	16.0	15.0	14.3	12.7	11.1	10.5	8.7	8.0	8.7	9.8	9.7	10.1	9.8	9.1
White	N/A	N/A	14.2	13.3	11.5	9.6	8.1	7.6	4.0	4.1	3.8	3.3	5.2	5.1	4.1	4.0	4.4
Black	N/A	N/A	18.4	17.6	17.1	17.1	15.2	13.0	14.2	11.2	10.2	11.8	12.5	12.5	13.8	13.4	12.1
Balance of NC County																	
All Races	N/A	N/A	6.4	6.4	6.1	6.3	5.4	5.3	4.5	4.5	4.3	4.7	5.3	6.0	6.3	6.6	6.5
White	N/A	N/A	5.5	5.7	5.3	5.2	4.5	4.3	3.5	3.5	3.1	3.0	3.6	4.2	4.6	5.1	5.4
Black	N/A	N/A	13.2	12.1	12.4	14.2	12.3	12.1	10.6	10.3	11.4	14.1	14.4	15.6	15.1	14.2	12.5
Sussex																	
All Races	8.3	8.6	8.3	7.8	7.7	6.3	5.6	5.5	5.0	5.6	6.8	6.0	5.3	5.8	5.5	4.6	5.1
White	6.6	8.1	7.8	6.9	6.8	6.1	4.6	4.7	4.8	5.1	6.2	5.5	5.0	4.9	4.5	3.6	3.8
Black	12.5	10.3	9.9	10.3	10.2	7.2	8.3	8.0	6.1	7.1	8.6	7.6	6.6	8.8	9.1	8.6	9.9

INFANT5

Notes:

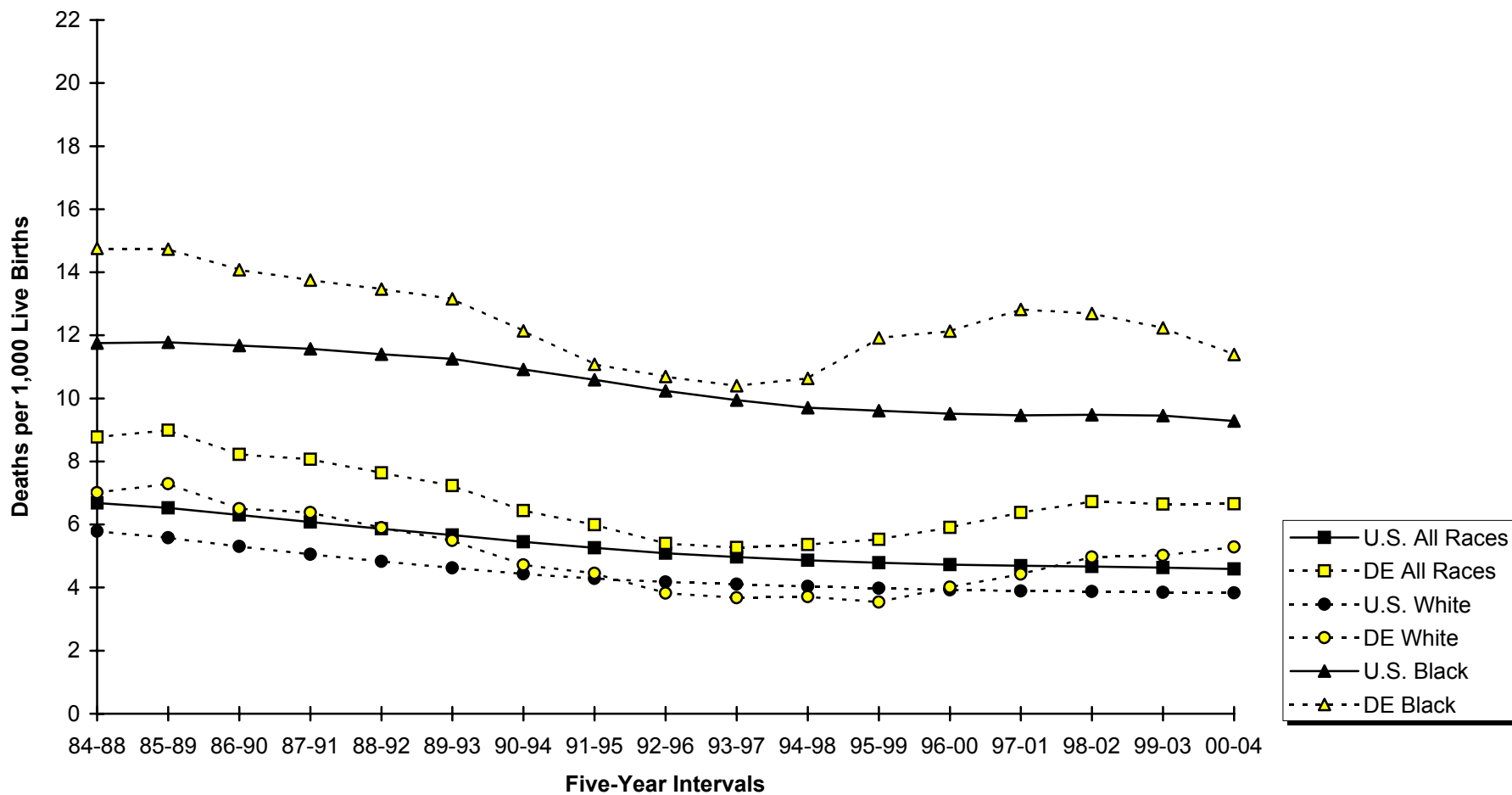
1. 2000-2004 US data are based on NCHS estimates.
2. N/A indicates data not available.
3. Neonatal mortality rates represent the number of deaths to children under 28 days of age per 1000 live births.
4. '+' indicates that the Delaware rate is significantly higher than the U.S. rate.
5. No statistical comparisons were made between the county rates and the U.S. rate due to small numbers. See Appendix C for details.

Sources:

National Center for Health Statistics
 Delaware Health Statistics Center

Figure E-3
Five-Year Average Neonatal Mortality Rates by Race

U.S. and Delaware, 1984-2004



Sources:
 Delaware Health Statistics Center
 National Center for Health Statistics

TABLE E-6
 FIVE-YEAR AVERAGE POSTNEONATAL MORTALITY RATES BY RACE
 U.S., DELAWARE, COUNTIES AND CITY OF WILMINGTON, 1984-2004

Area/ Race	1984 -1988	1985 -1989	1986 -1990	1987 -1991	1988 -1992	1989 -1993	1990 -1994	1991 -1995	1992 -1996	1993 -1997	1994 -1998	1995 -1999	1996 -2000	1997 -2001	1998 -2002	1999 -2003	2000 -2004
U.S.																	
All Races	3.7	3.6	3.6	3.5	3.4	3.3	3.2	3.0	2.9	2.7	2.6	2.5	2.4	2.4	2.3	2.3	2.3
White	3.2	3.1	3.0	2.9	2.8	2.7	2.6	2.5	2.4	2.3	2.1	2.0	2.0	1.9	1.9	1.9	1.9
Black	6.2	6.3	6.3	6.3	6.3	6.3	6.0	5.8	5.6	5.4	5.1	5.0	4.8	4.8	4.8	4.7	4.7
Delaware																	
All Races	3.3	3.3	3.1	3.4	3.2	3.1	2.9	2.9	2.5	2.5	2.6	2.6	2.5	2.6	2.4	2.5	2.6
White	2.6-	2.6-	2.4-	2.5	2.3-	2.0-	1.9-	2.0-	1.8-	1.9	2.2	2.2	2.2	2.2	2.0	1.9	2.1
Black	5.8	5.9	5.6	6.2	6.3	6.7	6.1	5.9	5.1	4.3	3.8-	3.9	3.8	4.3	4.1	4.5	4.7
Kent																	
All Races	3.6	3.8	4.0	4.1	4.7	4.1	3.9	3.7	3.5	3.2	3.6	3.0	2.7	2.7	2.7	2.6	2.9
White	3.4	3.5	3.4	3.3	3.6	2.9	2.9	3.0	3.0	3.1	3.7	2.8	2.9	2.4	2.5	2.2	2.4
Black	4.2	4.9	6.5	6.7	8.7	8.3	7.7	6.6	5.8	3.9	3.9	3.7	2.2	3.9	3.8	4.1	4.8
New Castle																	
All Races	3.2	3.0	2.7	3.0	2.9	2.8	2.7	2.6	2.2	2.1	2.3	2.5	2.4	2.5	2.2	2.3	2.4
White	2.4	2.3	2.1	2.2	2.0	1.8	1.7	1.7	1.4	1.4	1.7	1.9	1.8	2.0	1.8	1.8	1.9
Black	6.2	5.7	4.9	5.6	5.8	5.9	5.9	5.7	5.1	4.5	4.3	4.4	4.2	4.0	3.5	4.1	4.2
Wilmington																	
All Races	N/A	N/A	4.2	4.5	4.6	5.2	5.3	5.5	4.8	4.9	4.8	5.0	4.6	4.3	3.4	3.7	3.3
White	N/A	N/A	2.0	0.8	0.8	1.6	1.6	2.5	2.2	2.3	1.9	2.9	1.9	2.3	2.3	3.1	2.6
Black	N/A	N/A	5.4	6.6	6.7	7.2	7.5	7.3	6.3	6.5	6.6	6.3	6.2	5.5	4.2	4.2	3.8
Balance of NC County																	
All Races	N/A	N/A	2.3	2.6	2.5	2.2	2.0	1.9	1.6	1.5	1.7	1.9	1.9	2.1	2.0	2.0	2.3
White	N/A	N/A	2.1	2.3	2.1	1.9	1.7	1.6	1.3	1.3	1.6	1.8	1.8	1.9	1.8	1.6	1.9
Black	N/A	N/A	4.1	4.3	4.7	4.3	4.0	3.9	3.7	2.6	2.2	2.7	2.4	2.9	3.0	4.0	4.4
Sussex																	
All Races	3.5	4.1	3.9	4.4	3.0	3.4	2.7	3.2	2.9	3.4	2.7	2.5	2.8	3.3	2.9	2.8	3.0
White	2.5	2.8	2.7	3.1	1.9	1.8	1.6	2.1	2.1	2.9	2.7	2.5	2.5	2.7	2.0	1.9	2.1
Black	6.0	7.7	6.9	7.7	5.9	8.1	5.4	5.9	4.4	4.0	1.8	2.4	3.8	5.6	6.7	6.7	7.0

INFANT6

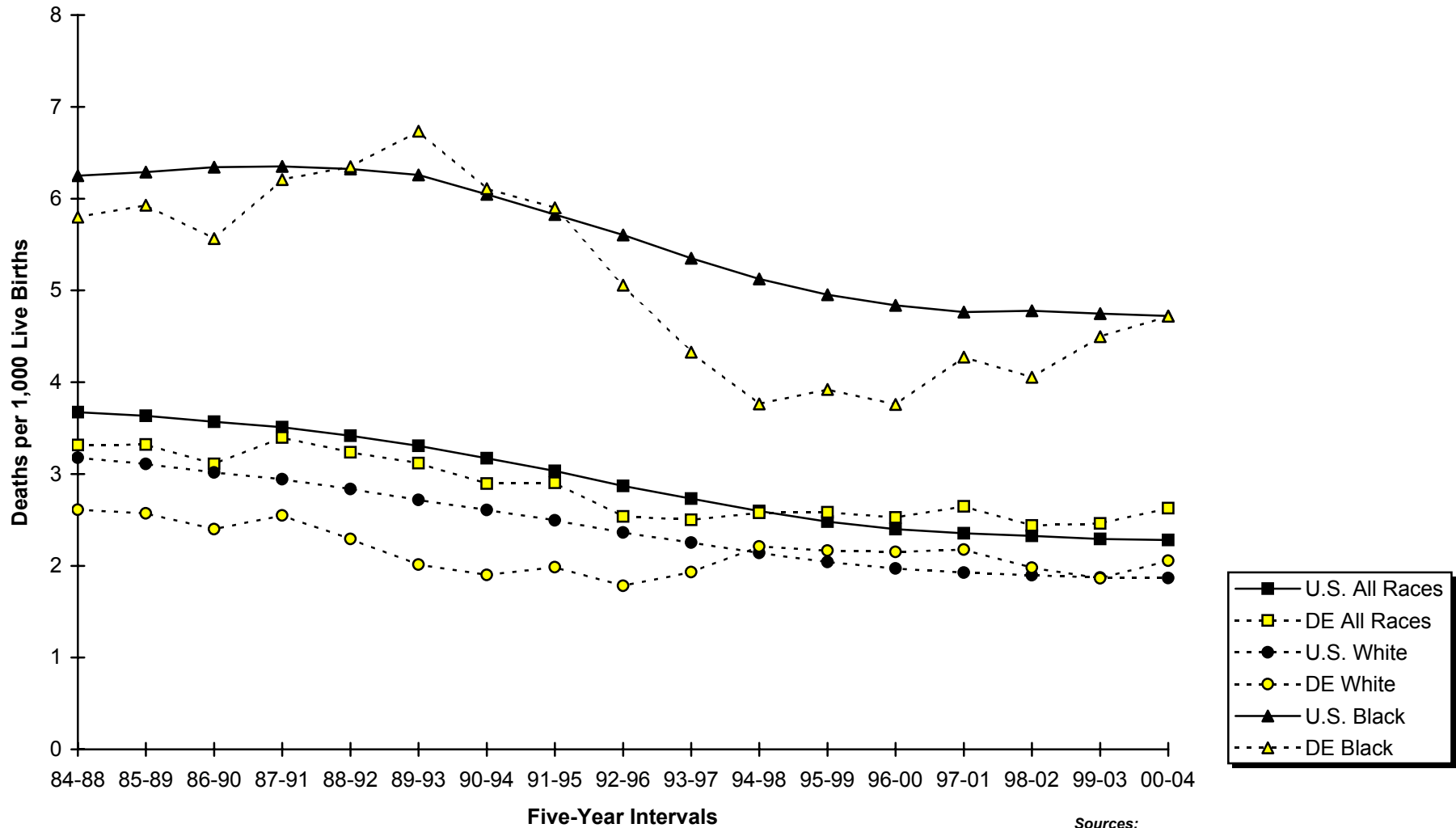
Notes:

1. 2000-2004 US data based on NCHS estimates.
2. N/A indicates data not available.
3. Postneonatal mortality rates represent the number of deaths to children 28 to 364 days of age per 1000 live births.
4. '-' indicates that the Delaware rate is significantly lower than the U.S. rate. No statistical comparisons were made between the county rates and the U.S. rate due to small numbers. See Appendix C for details.

Sources:

National Center for Health Statistics
 Delaware Health Statistics Center

Figure E-4
Five-Year Average Postneonatal Mortality Rates by Race
U.S. and Delaware, 1984-2004



Sources:
 Delaware Health Statistics Center
 National Center for Health Statistics

TABLE E-7
FIVE-YEAR AVERAGE PERINATAL MORTALITY RATES BY RACE

DELAWARE AND COUNTIES, 1989-2004

Area/ Race	1989 -1993	1990 -1994	1991 -1995	1992 -1996	1993 -1997	1994 -1998	1995 -1999	1996 -2000	1997 -2001	1998 -2002	1999 -2003	2000 -2004
Delaware												
All Races	9.8	8.8	8.0	7.1	6.9	6.9	7.0	7.1	7.6	8.1	8.1	8.3
White	7.6	6.8	6.3	5.7	5.6	5.7	5.4	5.6	5.8	6.2	6.3	6.8
Black	16.9	15.2	13.2	11.4	10.8	10.9	12.0	12.4	14.0	14.7	14.5	13.8
Kent												
All Races	8.4	8.2	7.6	7.7	6.8	7.3	7.6	7.5	7.4	9.1	9.0	9.0
White	7.8	7.6	6.4	6.4	4.8	5.6	5.8	6.0	6.2	8.3	7.9	8.0
Black	10.5	9.9	10.3	11.2	12.6	12.5	13.3	12.9	12.2	12.2	12.9	11.9
New Castle												
All Races	10.4	9.2	8.3	7.3	6.9	6.7	7.0	7.3	8.0	8.4	8.5	8.7
White	7.6	6.7	6.3	5.5	5.5	5.3	5.0	5.3	5.6	5.8	6.2	6.8
Black	19.7	17.5	14.8	13.2	11.3	11.3	13.1	13.7	15.4	16.4	16.0	14.9
Sussex												
All Races	8.9	8.1	7.2	5.9	7.0	7.3	6.6	6.3	6.7	6.5	6.0	6.6
White	7.5	6.5	6.2	6.2	6.8	7.2	6.5	6.1	5.7	5.5	5.1	5.4
Black	13.1	12.3	10.4	5.6	7.5	7.7	6.6	6.6	10.2	10.1	9.6	11.2

PERI_RACE

Notes:

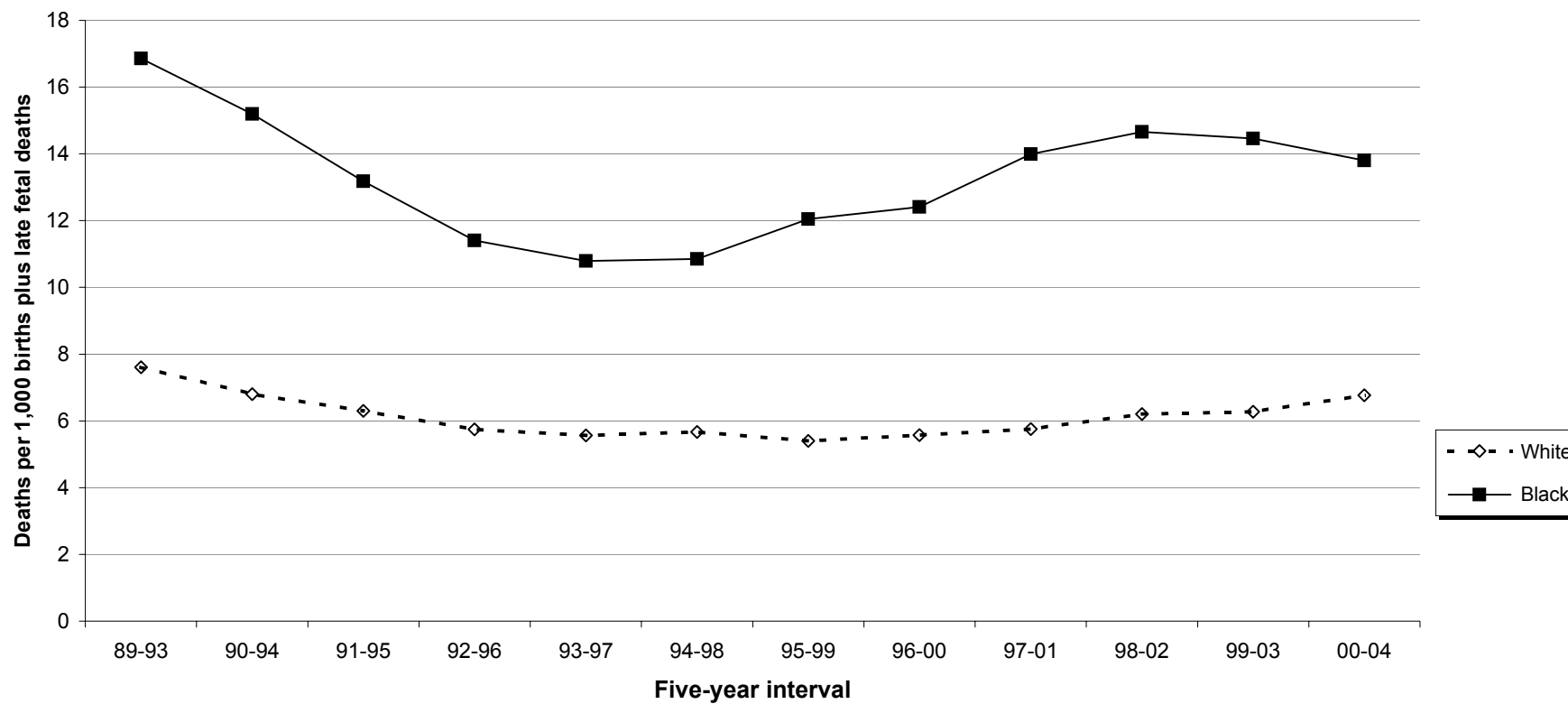
1. Perinatal relates to the period surrounding the birth event.
2. The perinatal mortality rate is the sum of late fetal deaths (28+ weeks gestation) and early infant deaths (<7 days of age) divided by the number of live births and late fetal deaths, per 1,000 live births and late fetal deaths.

Source:

Delaware Health Statistics Center

Figure E-5
Five-year Average Perinatal Mortality Rates by Race

Delaware, 1989-2004



Source:
Delaware Health Statistics Center

TABLE E-8
FIVE-YEAR AVERAGE INFANT MORTALITY
RATES BY SELECTED RISK MARKERS AND RACE OF MOTHER

DELAWARE, 1999-2003 LIVE BIRTH COHORT

Risk Factor	Race		
	All Races	White	Black
Birth Weight of Child			
<2500	74.2	67.4	88.3
<1500	302.4	297.2	317.0
1500-2499	13.0	12.7	13.9
2500+	2.4	2.0	3.6
Age of Mother			
<20	11.7	10.5	13.0
20-24	8.9	6.3	14.0
25-29	7.8	5.3	17.7
30+	9.0	7.5	17.9
Marital Status of Mother			
Married	7.2	6.2	15.1
Single	11.7	8.6	15.7
Education of Mother			
<12 years	10.7	9.2	14.8
H.S. diploma	11.9	8.6	18.7
1+ years college	6.0	4.7	12.2
Trimester Care Received			
Late/No PNC ³	25.8	24.2	30.6
First	8.2	6.2	15.0
Interval Since Last Live Birth			
<18 months	11.5	---	---
18+ months	7.0	5.1	13.0

COHRATES

Notes:

1. Infant mortality rates represent the number of deaths to children under one year of age per 1,000 live births.
2. "---" Indicates rate does not meet standard of reliability or precision; based on fewer than 20 deaths in the numerator.
3. Defined as receiving no care or care in the third trimester.

TABLE E-9
LEADING CAUSES OF INFANT DEATH BY GESTATIONAL AGE CATEGORY
DELAWARE, 1999-2003 LIVE BIRTH COHORT

Leading causes of death	Gestational Age Category					% Born Very Preterm	% Born Preterm
	Very preterm	Moderately preterm	Term	Unknown	Total		
Disorders related to short gestation and low birth weight, not elsewhere classified	91	1	0	1	93	97.8	98.9
Congenital malformations, deformations, and chromosomal abnormalities	16	16	28	0	60	26.7	53.3
All other conditions originating in the perinatal period	36	7	6	0	49	73.5	87.8
Newborn affected by maternal complication of pregnancy	47	0	0	0	47	100.0	100.0
Newborn affected by complications of placenta, cord, and membranes	34	4	2	0	40	85.0	95.0
Sudden infant death syndrome	2	8	30	0	40	5.0	25.0
Infections specific to the perinatal period	22	4	0	0	26	84.6	100.0
Other respiratory conditions originating in perinatal period	20	1	3	0	24	83.3	87.5
Respiratory distress of newborn	19	1	0	0	20	95.0	100.0
Diseases of the digestive system	12	0	0	0	12	100.0	100.0
Accidents	1	2	7	0	10	10.0	30.0
Diseases of the circulatory system	2	2	6	0	10	20.0	40.0
Intrauterine hypoxia and birth asphyxia	6	1	2	0	9	66.7	77.8
Septicemia	1	1	6	0	8	12.5	25.0
Renal failure and other disorders of kidney	4	1	2	0	7	57.1	71.4
Slow fetal growth and fetal malnutrition	7	0	0	0	7	100.0	100.0
Endocrine, nutritional and metabolic diseases	2	1	3	0	6	33.3	50.0
Other symptoms, signs, and abnormal clinical and lab findings not elsewhere classified	1	1	3	0	5	20.0	40.0
Diseases of the nervous system	0	1	3	0	4	0.0	25.0
All other infectious and parasitic diseases	0	0	3	0	3	0.0	0.0
Influenza and pneumonia	0	1	1	0	2	0.0	50.0
Birth trauma	2	0	0	0	2	100.0	100.0
Certain intestinal infectious diseases	0	0	1	0	1	0.0	0.0
Homicide	0	0	1	0	1	0.0	0.0
Other and unspecified diseases of genitourinary system	0	0	1	0	1	0.0	0.0
All other causes	2	1	3	0	6	33.3	50.0
TOTAL	327	54	111	1	493	66.3	77.3

INFLCOD

Notes:

1. Leading causes of infant death are defined by ICD-10 codes shown in Appendix D.
2. Very preterm is defined as less than 32 weeks of gestation.
3. Moderately preterm is defined as between 32 and 36 weeks of gestation.
4. Term is defined as 37 and greater weeks of gestation.
5. The percent born preterm includes both the very preterm and moderately preterm groups.

Source:

Delaware Health Statistics Center

TABLE E-10
NUMBER OF INFANT DEATHS BY PLURALITY, BIRTH WEIGHT IN GRAMS, RACE OF MOTHER AND SEX OF CHILD
DELAWARE, 1999-2003 LIVE BIRTH COHORT

Plurality/ Birth Weight	Race and Sex											
	All Races			White			Black			Other		
	Both Sexes	Male	Female	Both Sexes	Male	Female	Both Sexes	Male	Female	Both Sexes	Male	Female
All Births	493	286	207	267	149	118	211	130	81	15	7	8
<2500	375	214	161	197	110	87	169	100	69	9	4	5
<1500	323	187	136	167	95	72	149	88	61	7	4	3
<500	159	94	65	72	42	30	85	52	33	2	0	2
500-999	145	80	65	81	43	38	59	33	26	5	4	1
1000-1499	19	13	6	14	10	4	5	3	2	0	0	0
1500-1999	26	16	10	15	8	7	11	8	3	0	0	0
2000-2499	26	11	15	15	7	8	9	4	5	2	0	2
2500+	118	72	46	70	39	31	42	30	12	6	3	3
2500-2999	37	19	18	24	10	14	9	7	2	4	2	2
3000-3499	50	30	20	28	16	12	20	13	7	2	1	1
3500-3999	22	16	6	14	10	4	8	6	2	0	0	0
4000-4499	8	7	1	3	3	0	5	4	1	0	0	0
4500+	1	0	1	1	0	1	0	0	0	0	0	0
Unknown	0	0	0	0	0	0	0	0	0	0	0	0
Single Births	386	228	158	194	110	84	180	113	67	12	5	7
<2500	270	157	113	126	72	54	138	83	55	6	2	4
<1500	225	134	91	102	61	41	119	71	48	4	2	2
<500	107	64	43	42	25	17	63	39	24	2	0	2
500-999	103	58	45	50	27	23	51	29	22	2	2	0
1000-1499	15	12	3	10	9	1	5	3	2	0	0	0
1500-1999	20	13	7	10	5	5	10	8	2	0	0	0
2000-2499	25	10	15	14	6	8	9	4	5	2	0	2
2500+	116	71	45	68	38	30	42	30	12	6	3	3
2500-2999	35	18	17	22	9	13	9	7	2	4	2	2
3000-3499	50	30	20	28	16	12	20	13	7	2	1	1
3500-3999	22	16	6	14	10	4	8	6	2	0	0	0
4000-4499	8	7	1	3	3	0	5	4	1	0	0	0
4500+	1	0	1	1	0	1	0	0	0	0	0	0
Unknown	0	0	0	0	0	0	0	0	0	0	0	0
Plural Births	107	58	49	73	39	34	31	17	14	3	2	1
<2500	105	57	48	71	38	33	31	17	14	3	2	1
<1500	98	53	45	65	34	31	30	17	13	3	2	1
<500	52	30	22	30	17	13	22	13	9	0	0	0
500-999	42	22	20	31	16	15	8	4	4	3	2	1
1000-1499	4	1	3	4	1	3	0	0	0	0	0	0
1500-1999	6	3	3	5	3	2	1	0	1	0	0	0
2000-2499	1	1	0	1	1	0	0	0	0	0	0	0
2500+	2	1	1	2	1	1	0	0	0	0	0	0
2500-2999	2	1	1	2	1	1	0	0	0	0	0	0
3000-3499	0	0	0	0	0	0	0	0	0	0	0	0
3500-3999	0	0	0	0	0	0	0	0	0	0	0	0
4000-4499	0	0	0	0	0	0	0	0	0	0	0	0
4500+	0	0	0	0	0	0	0	0	0	0	0	0
Unknown	0	0	0	0	0	0	0	0	0	0	0	0

Note:
Infant deaths refer to deaths to children under one year of age.

Source:
Delaware Health Statistics Center

PLBWRC SX

TABLE E-11
NUMBER OF NEONATAL DEATHS BY PLURALITY, BIRTH WEIGHT IN GRAMS, RACE OF MOTHER AND SEX OF CHILD
DELAWARE, 1999-2003 LIVE BIRTH COHORT

Plurality/ Birth Weight	Race and Sex											
	All Races			White			Black			Other		
	Both Sexes	Male	Female	Both Sexes	Male	Female	Both Sexes	Male	Female	Both Sexes	Male	Female
All Births	363	211	152	195	113	82	160	95	65	8	3	5
<2500	321	188	133	170	99	71	145	87	58	6	2	4
<1500	294	170	124	154	88	66	135	80	55	5	2	3
<500	157	94	63	72	42	30	83	52	31	2	0	2
500-999	121	65	56	70	37	33	48	26	22	3	2	1
1000-1499	16	11	5	12	9	3	4	2	2	0	0	0
1500-1999	16	12	4	9	7	2	7	5	2	0	0	0
2000-2499	11	6	5	7	4	3	3	2	1	1	0	1
2500+	42	23	19	25	14	11	15	8	7	2	1	1
2500-2999	17	8	9	11	5	6	4	2	2	2	1	1
3000-3499	15	8	7	8	5	3	7	3	4	0	0	0
3500-3999	8	5	3	6	4	2	2	1	1	0	0	0
4000-4499	2	2	0	0	0	0	2	2	0	0	0	0
4500+	0	0	0	0	0	0	0	0	0	0	0	0
Unknown	0	0	0	0	0	0	0	0	0	0	0	0
Single Births	267	158	109	130	78	52	131	78	53	6	2	4
<2500	227	136	91	107	65	42	116	70	46	4	1	3
<1500	203	121	82	94	57	37	106	63	43	3	1	2
<500	105	64	41	42	25	17	61	39	22	2	0	2
500-999	86	47	39	44	24	20	41	22	19	1	1	0
1000-1499	12	10	2	8	8	0	4	2	2	0	0	0
1500-1999	14	10	4	7	5	2	7	5	2	0	0	0
2000-2499	10	5	5	6	3	3	3	2	1	1	0	1
2500+	40	22	18	23	13	10	15	8	7	2	1	1
2500-2999	15	7	8	9	4	5	4	2	2	2	1	1
3000-3499	15	8	7	8	5	3	7	3	4	0	0	0
3500-3999	8	5	3	6	4	2	2	1	1	0	0	0
4000-4499	2	2	0	0	0	0	2	2	0	0	0	0
4500+	0	0	0	0	0	0	0	0	0	0	0	0
Unknown	0	0	0	0	0	0	0	0	0	0	0	0
Plural Births	96	53	43	65	35	30	29	17	12	2	1	1
<2500	94	52	42	63	34	29	29	17	12	2	1	1
<1500	91	49	42	60	31	29	29	17	12	2	1	1
<500	52	30	22	30	17	13	22	13	9	0	0	0
500-999	35	18	17	26	13	13	7	4	3	2	1	1
1000-1499	4	1	3	4	1	3	0	0	0	0	0	0
1500-1999	2	2	0	2	2	0	0	0	0	0	0	0
2000-2499	1	1	0	1	1	0	0	0	0	0	0	0
2500+	2	1	1	2	1	1	0	0	0	0	0	0
2500-2999	2	1	1	2	1	1	0	0	0	0	0	0
3000-3499	0	0	0	0	0	0	0	0	0	0	0	0
3500-3999	0	0	0	0	0	0	0	0	0	0	0	0
4000-4499	0	0	0	0	0	0	0	0	0	0	0	0
4500+	0	0	0	0	0	0	0	0	0	0	0	0
Unknown	0	0	0	0	0	0	0	0	0	0	0	0

NEOPLBW

Note:

Neonatal deaths refer to deaths to children under 28 days of age.

Source:

Delaware Health Statistics Center

TABLE E-12
RANKING OF FIVE-YEAR AVERAGE INFANT MORTALITY RATES

U.S., 50 STATES AND DISTRICT OF COLUMBIA, 1999-2003

State	All Races		White		Black	
	Rate	Rank	Rate	Rank	Rate	Rank
Alabama	9.3	4	6.8	6 *	14.9	24 *
Alaska**	6.6	31 *	5.3	39 *	11.5	44
Arizona	6.7	29 *	6.2	18 *	17.3	5 *
Arkansas	8.3	10	7.0	3	13.5	33 *
California	5.4	45 *	5.0	44 *	12.8	39
Colorado	6.1	38 *	5.7	28 *	18.0	2
Connecticut	6.1	38 *	5.2	42 *	13.4	35 *
Delaware	9.1	5 *	6.9	4 *	16.7	12 *
District of Columbia	11.9	1	4.8	50	15.4	20 *
Florida	7.3	21 *	5.6	31 *	13.4	35 *
Georgia	8.5	8 *	6.1	21 *	13.7	31
Hawaii**	7.2	23	5.7	28 *	13.5	33 *
Idaho**	6.6	31 *	6.6	9 *	13.4	35 *
Illinois	8.0	13 *	6.1	21 *	16.7	12 *
Indiana	7.7	16 *	6.8	6 *	15.5	19
Iowa	5.8	42	5.4	36 *	17.1	10 *
Kansas	7.0	24 *	6.5	11 *	15.3	22
Kentucky	7.0	24 *	6.5	11 *	12.2	41
Louisiana	9.5	3	6.3	14 *	14.1	29
Maine**	5.0	49	4.9	46 *	17.9	3
Maryland	8.0	13 *	5.2	42 *	13.6	32
Massachusetts	4.9	50 *	4.5	51	9.6	48
Michigan	8.2	11	6.2	18 *	17.8	4
Minnesota	5.4	45 *	4.9	46 *	11.3	45
Mississippi	10.5	2	6.9	4 *	14.9	24 *
Missouri	7.7	16 *	6.3	14 *	16.5	14 *
Montana**	6.8	27 *	6.3	14 *	23.9	1
Nebraska	6.7	29 *	5.9	27	17.2	8 *
Nevada	6.1	38 *	5.5	35	14.7	27
New Hampshire**	4.9	50 *	4.9	46 *	7.0	49
New Jersey	6.2	36 *	4.9	46 *	13.3	38
New Mexico**	6.4	34 *	6.0	24 *	17.3	5 *
New York	6.1	38 *	5.3	39 *	10.5	47
North Carolina	8.5	8 *	6.3	14 *	15.7	18
North Dakota**	7.4	19 *	6.8	6 *	14.9	24 *
Ohio	7.8	15	6.4	13	16.5	14 *
Oklahoma	8.1	12	7.3	2	15.9	17
Oregon	5.6	43	5.6	31 *	11.0	46
Pennsylvania	7.3	21 *	6.1	21 *	15.4	20 *
Rhode Island	6.5	33	6.0	24 *	11.7	43
South Carolina	9.1	5 *	6.0	24 *	15.2	23
South Dakota**	7.0	24 *	5.6	31 *	17.3	5 *
Tennessee	8.8	7	6.6	9 *	17.2	8 *
Texas	6.2	36 *	5.4	36 *	12.7	40
Utah**	5.1	48	5.0	44 *	14.5	28
Vermont**	5.3	47	5.4	36 *	5.0	51
Virginia	7.4	19 *	5.6	31 *	13.9	30
Washington	5.5	44	5.3	39 *	11.8	42
West Virginia	7.7	16 *	7.5	1	16.5	14 *
Wisconsin	6.8	27 *	5.7	28 *	17.1	10 *
Wyoming**	6.4	34 *	6.2	18 *	6.6	50
United States	6.9		5.7		14.2	

INFSTATE

Notes:

1. *Indicates a tied rank.
2. **Rate and rank for the black population should be interpreted with caution since the rate is based on less than 50 infant deaths.
3. Infant mortality rates represent the number of deaths under one year of age per 1,000 live births.
4. Infant mortality rates in this table may not match rates in the Infant Mortality Section of this report due to different data sources.
5. It should be noted that rankings do not have particular value for identifying population risk groups or in suggesting appropriate strategies or policy initiatives.

Sources:

Delaware Health Statistics Center
National Center for Health Statistics

Figure E-6

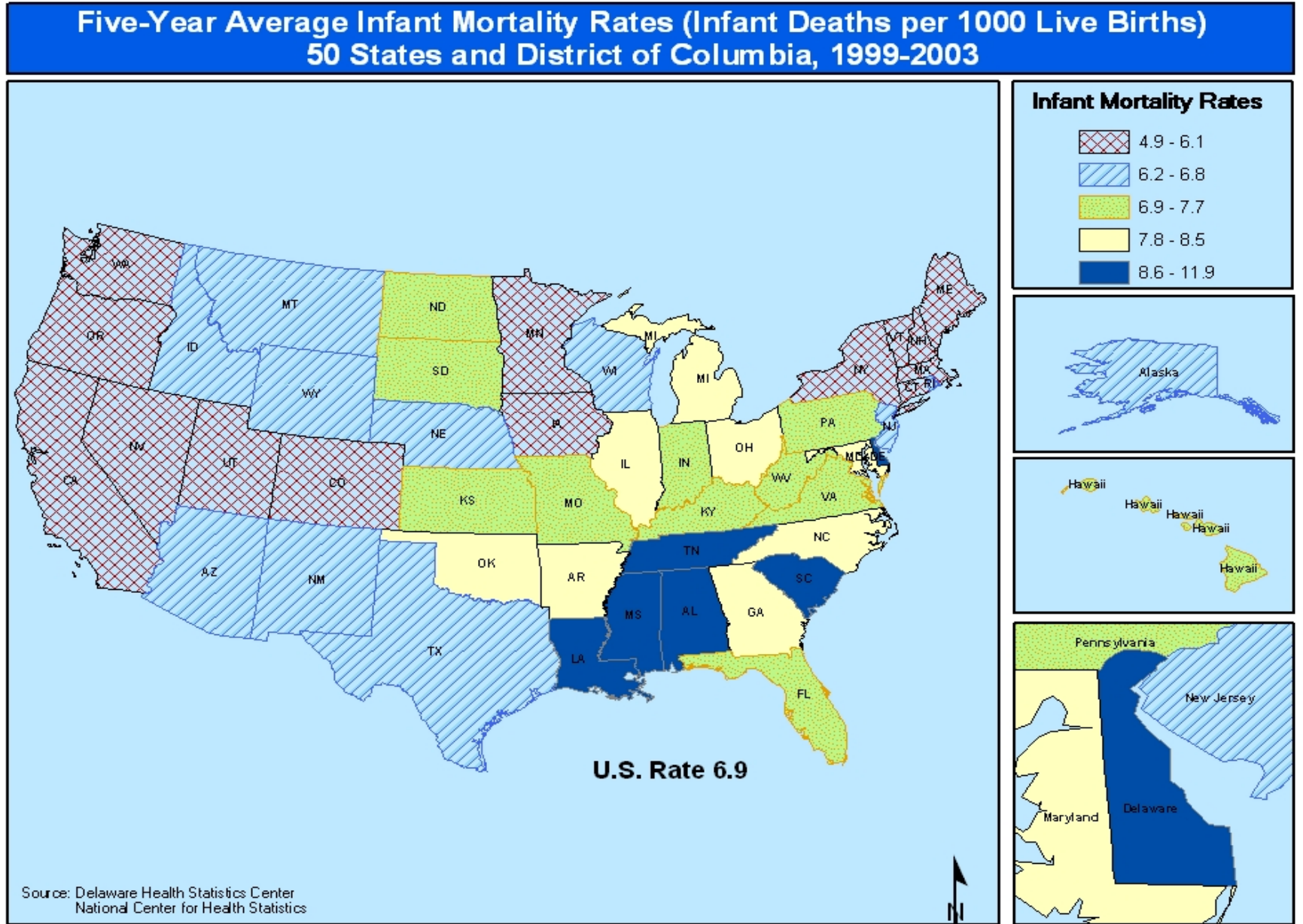


TABLE E-13
RANKING OF FIVE-YEAR AVERAGE NEONATAL MORTALITY RATES

U.S., 50 STATES AND DISTRICT OF COLUMBIA, 1999-2003

State	All Races		White		Black	
	Rate	Rank	Rate	Rank	Rate	Rank
Alabama	5.8	7 *	4.1	17 *	9.5	28
Alaska**	3.0	51	2.8	51	4.6	49
Arizona	4.3	29 *	4.2	15 *	10.3	22
Arkansas	4.9	20 *	4.1	17 *	8.3	38
California	3.6	44 *	3.4	42 *	8.2	39
Colorado	4.3	29 *	3.9	27 *	12.9	4
Connecticut	4.5	26 *	4.0	21 *	9.2	31 *
Delaware	6.7	2	5.0	1	12.2	7
District of Columbia	8.6	1	3.6	39	11.1	13
Florida	4.8	23	3.7	34 *	8.7	37
Georgia	5.8	7 *	4.0	21 *	9.3	29 *
Hawaii**	5.0	18 *	4.5	5 *	10.7	17 *
Idaho**	4.3	29 *	4.4	7 *	8.9	36
Illinois	5.5	12	4.4	7 *	10.7	17 *
Indiana	5.1	16 *	4.6	3 *	9.7	25 *
Iowa	3.6	44 *	3.4	42 *	10.9	15 *
Kansas	4.7	24 *	4.3	13 *	10.2	23
Kentucky	4.2	34	4.0	21 *	7.2	42 *
Louisiana	6.1	5	4.0	21 *	9.1	33 *
Maine**	3.8	38 *	3.7	34 *	13.7	3
Maryland	5.7	9 *	3.8	30 *	9.7	25 *
Massachusetts	3.7	42 *	3.5	40 *	7.2	42 *
Michigan	5.6	11	4.3	13 *	12.1	8
Minnesota	3.5	47 *	3.3	49 *	6.4	46
Mississippi	6.4	3	4.0	21 *	9.3	29 *
Missouri	5.2	14 *	4.2	15 *	11.2	12
Montana**	4.0	35 *	3.8	30 *	14.4	2
Nebraska	4.5	26 *	4.1	17 *	11.5	10
Nevada	3.6	44 *	3.4	42 *	7.9	40
New Hampshire**	3.4	49 *	3.4	42 *	4.0	50
New Jersey	4.3	29 *	3.5	40 *	9.0	35
New Mexico**	3.9	37	3.7	34 *	12.6	6
New York	4.3	29 *	3.8	30 *	7.2	42 *
North Carolina	6.0	6	4.4	7 *	11.3	11
North Dakota**	5.0	18 *	4.6	3 *	12.8	5
Ohio	5.3	13	4.4	7 *	11.0	14
Oklahoma	4.7	24 *	4.4	7 *	9.2	31 *
Oregon**	3.8	38 *	3.8	30 *	5.8	47
Pennsylvania	5.2	14 *	4.4	7 *	10.5	20 *
Rhode Island	4.9	20 *	4.5	5 *	9.6	27
South Carolina	6.3	4	4.0	21 *	10.9	15 *
South Dakota**	3.8	38 *	3.3	49 *	15.4	1
Tennessee	5.7	9 *	4.1	17 *	11.7	9
Texas	3.8	38 *	3.4	42 *	7.8	41
Utah**	3.4	49 *	3.4	42 *	9.1	33 *
Vermont**	3.7	42 *	3.7	34 *	5.0	48
Virginia	5.1	16 *	3.7	34 *	9.8	24
Washington	3.5	47 *	3.4	42 *	7.1	45
West Virginia**	4.9	20 *	4.8	2	10.5	20 *
Wisconsin	4.5	26 *	3.9	27 *	10.6	19
Wyoming**	4.0	35 *	3.9	27 *	3.3	51
United States	4.6		3.8		9.5	

NEOSTATE

Notes:

1. *Indicates a tied rank.
2. **Rate and rank for the black population should be interpreted with caution since the rate is based on less than 50 neonatal deaths.
3. Neonatal mortality rates represent the number of deaths under 28 days of age per 1,000 live births.
4. Neonatal mortality rates in this table may not match rates in the Infant Mortality Section of this report due to different data sources.
5. It should be noted that rankings do not have particular value for identifying population risk groups or in suggesting appropriate strategies or policy initiatives.

Sources:

Delaware Health Statistics Center
National Center for Health Statistics

Figure E-7

