

DELAWARE VITAL STATISTICS ANNUAL REPORT INFANT MORTALITY, 2021



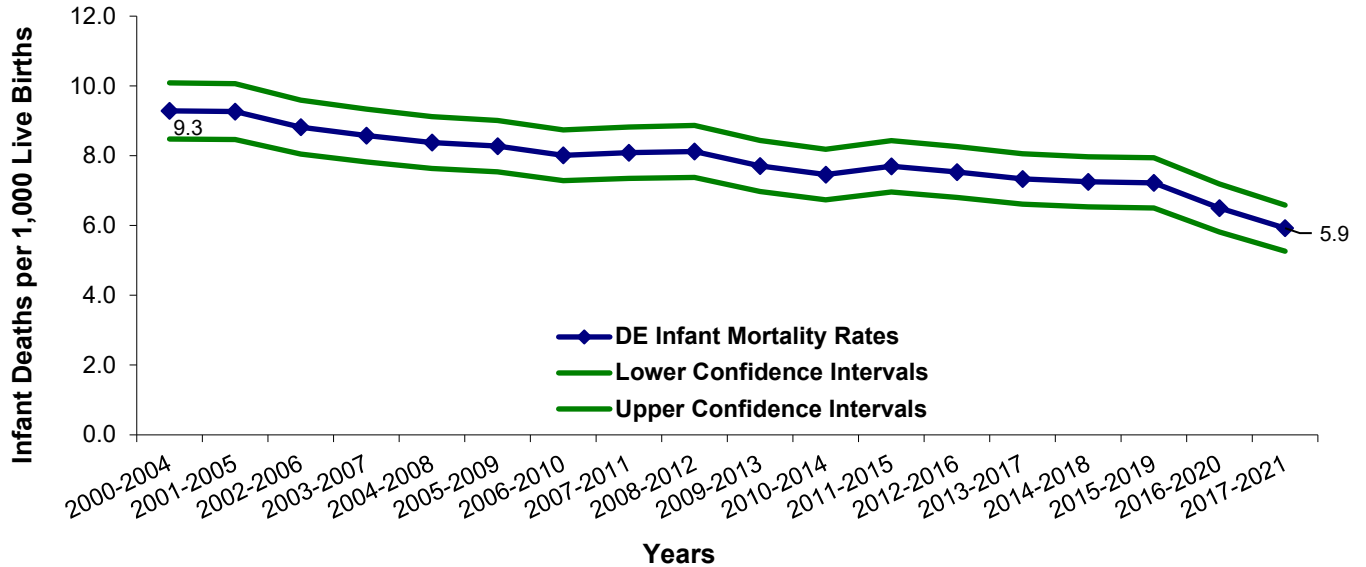
Suggested Citation:

Delaware Health Statistics Center. *Delaware Vital Statistics Annual Report, 2021*.
Delaware Department of Health and Social Services, Division of Public Health: 2023.

INFANT MORTALITY

In 2017-2021, Delaware's infant mortality rate (IMR) was 5.9 infant deaths per 1,000 live births, resulting in a total decline of 36.2 percent from the 2000-2004 rate of 9.3 infant deaths per 1,000 live births.

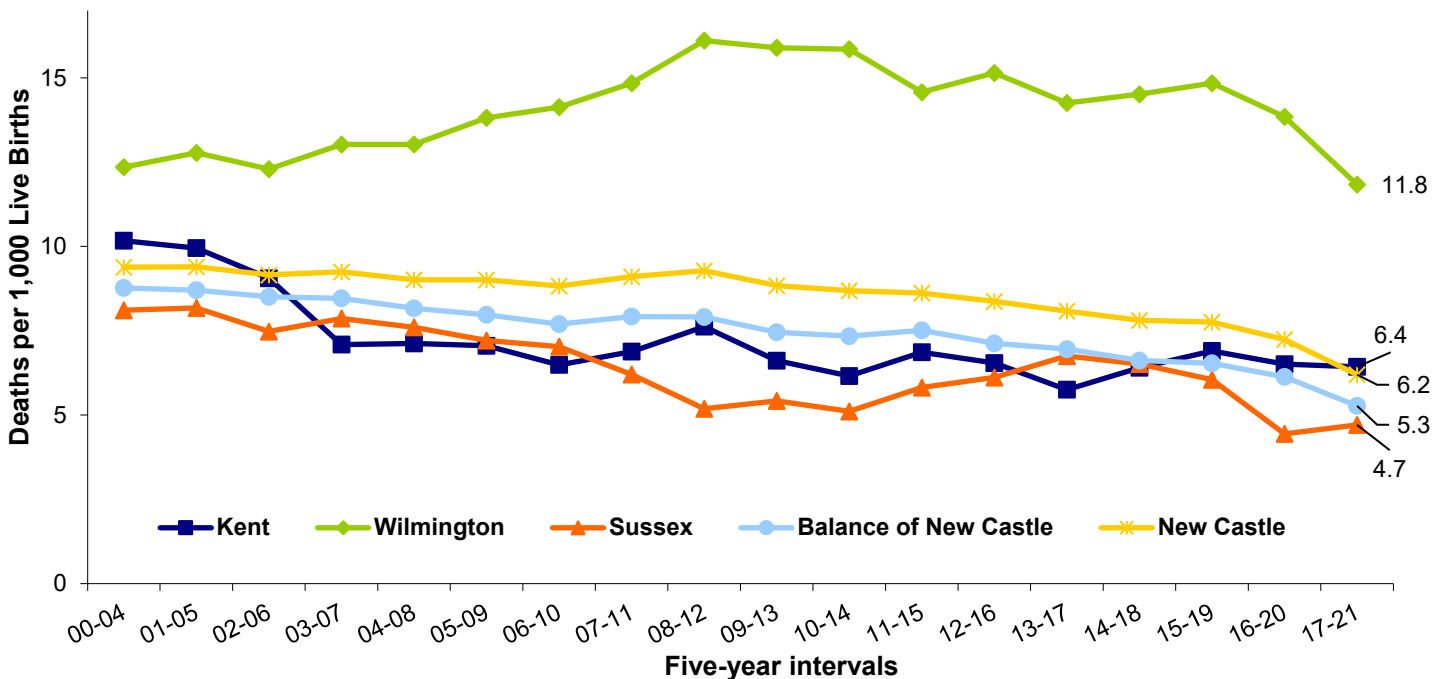
Figure 27. Five-year Average Infant Mortality Rates with Confidence Intervals, Delaware, 2000-2021



Source: Delaware Department of Health and Social Services, Division of Public Health, Delaware Health Statistics Center

Wilmington's IMR continued to be the highest in Delaware at 11.8 infant deaths per 1,000 live births. Kent county's IMR of 6.4 infant deaths per 1,000 live births is the higher than New Castle county's IMR of 6.2 infant deaths per 1,000 live births. In 2017-2021 Sussex County's IMR remained the lowest at 4.7 infant deaths per 1,000 live births. During the same time period the balance of New Castle County's IMR was 5.3 infant deaths per 1,000 live births.

Figure 28. Five-year Average Infant Mortality Rates by County and City of Wilmington, Delaware, 2000-2021

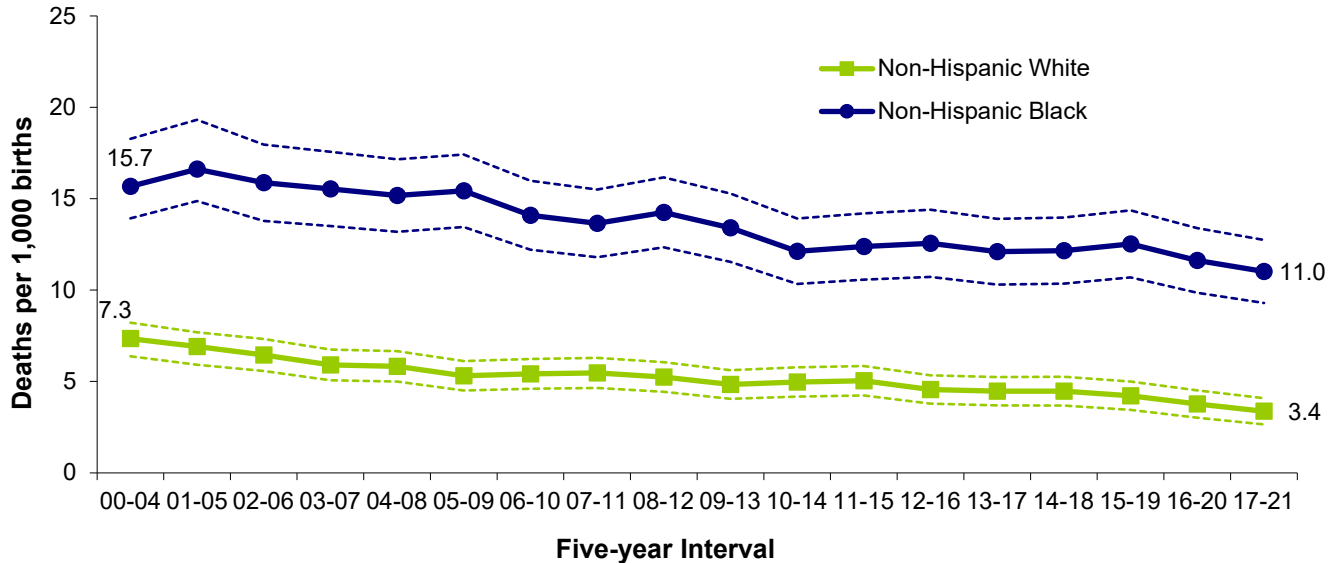


Source: Delaware Health and Social Services, Division of Public Health, Delaware Health Statistics Center

INFANT MORTALITY- Leading Causes of Death

Non-Hispanic black infants experienced a lower percentage decline in mortality rates than non-Hispanic white infants. In 2017-2021 the non-Hispanic black IMR of 11 infant deaths per 1,000 live births was a 30 percent decrease from the 15.7 rate in 2000-2004. Non-Hispanic white IMR decreased 54 percent from 7.3 in 2000-2004 to 3.4 infant deaths per 1,000 live births in 2017-2021.

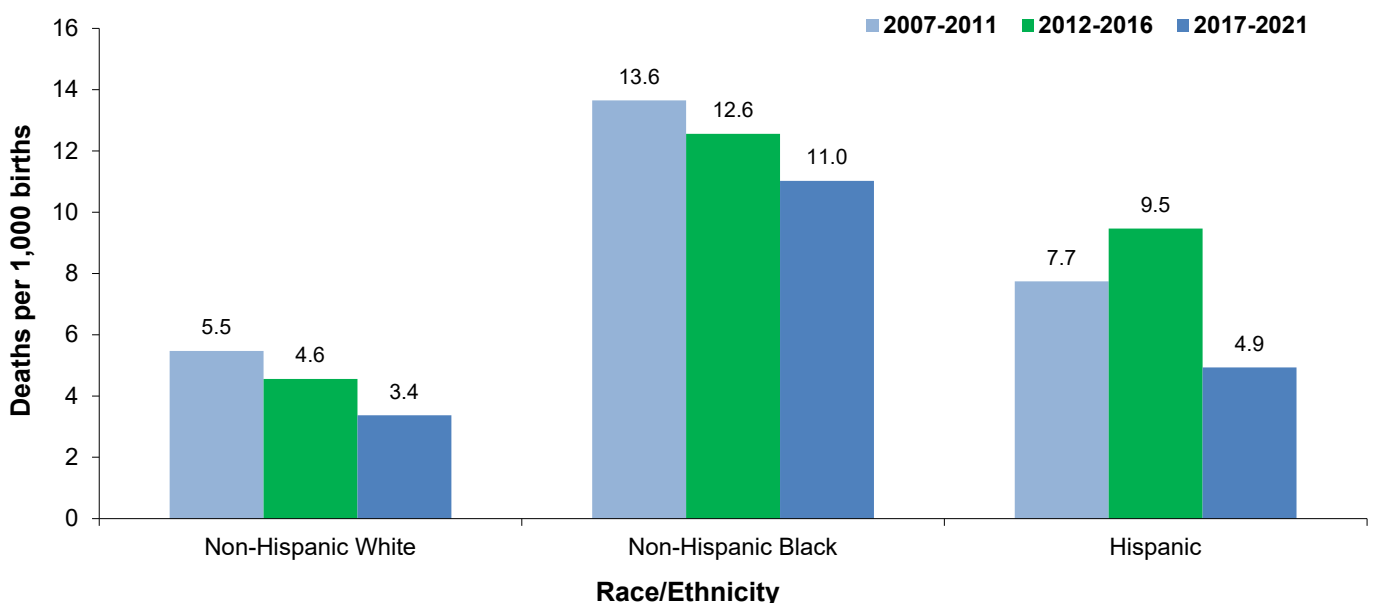
Figure 29. Five-year Average Black and White Infant Mortality Rates with Confidence In Delaware, 2000-2021



Source: Delaware Department of Health and Social Services, Division of Public Health, Delaware Health Statistics Center

Significant disparities existed between non-Hispanic black and non-Hispanic white infant mortality rates as well as Hispanic IMRs. Non-Hispanic black IMRs were highest in all three time periods depicted below with the highest rate of 13.6 infant deaths per 1,000 live births in 2007-2011. Hispanic IMRs were 1.5 times higher than the non-Hispanic white IMRs in 2017-2021. The non-Hispanic black rate in 2017-2021 was more than two times higher than the Hispanic rate of 4.9 infant deaths per 1,000 live births. From 2012-2016 to 2017-2021 the Hispanic IMR decreased 48 percent (9.5 to 4.9 infant deaths per 1,000 live births).

Figure 30. Five-year Average Infant Mortality Rates by Race and Hispanic Origin, Delaware, 2007-2021

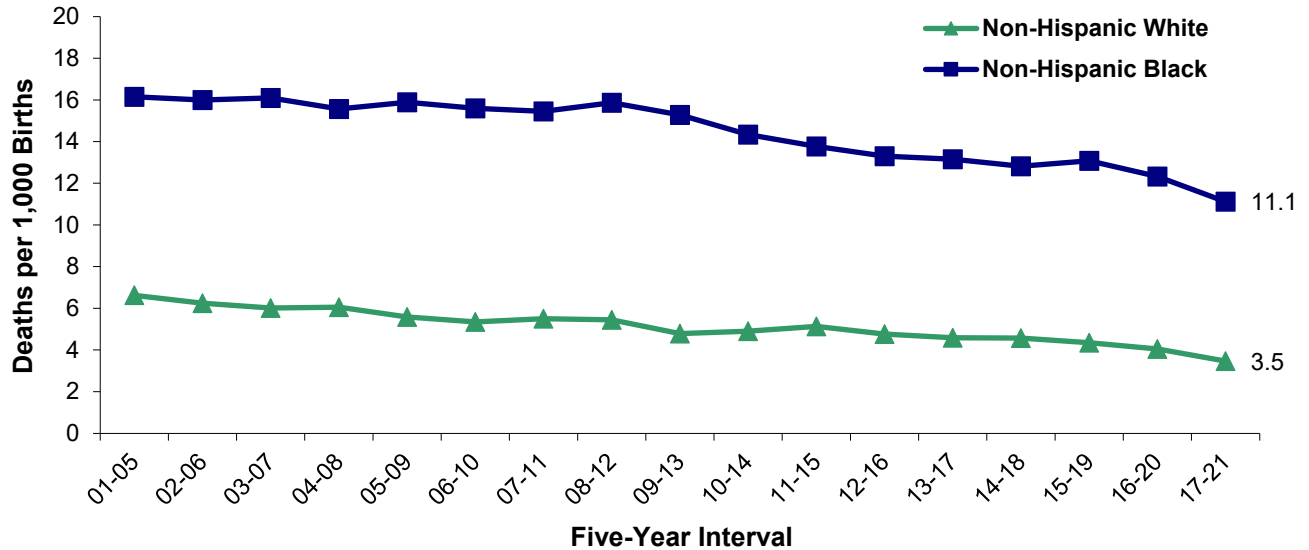


Source: Delaware Department of Health and Social Services, Division of Public Health, Delaware Health Statistics Center

INFANT MORTALITY- Leading Causes of Death

In 2017-2021, Kent County had the highest IMRs and Sussex had the lowest. Non-Hispanic black five-year average IMRs in New Castle County were stable at 16 infant deaths per 1,000 live births from 2001-2005 to 2008-2012, and decreased 31 percent to 11.1 infant deaths per 1,000 live births in 2017-2021. Disparity between the races is evident in all three counties, with the New Castle non-Hispanic black rate three times higher than the non-Hispanic white rate for 2017-2021.

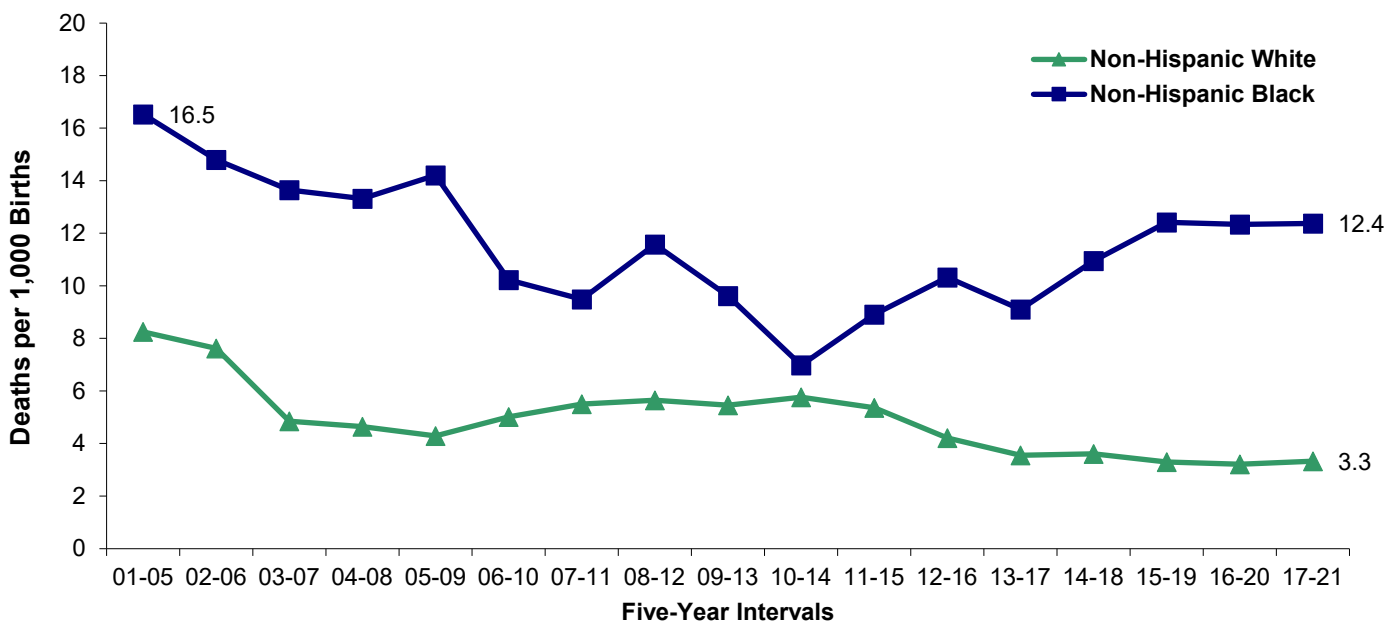
Five-year Average Infant Mortality Rates by Race, New Castle County, Delaware, 2001-2021



Source: Delaware Department of Health and Social Services, Division of Public Health, Delaware Health Statistics Center

Non-Hispanic black IMRs in Kent County peaked at 16.5 infant deaths per 1,000 live births in 2001-2005. The non-Hispanic black IMR decreased 25 percent to 12.4 infant death per 1,000 live births in 2017-2021. The non-Hispanic white IMR had a 60 percent decrease from 2001-2005 to 2017-2021 (8.2 to 3.3 infant deaths per 1,000 live births). The non-Hispanic Black IMR was nearly four times higher than the non-Hispanic white IMR.

Figure 32. Five-year Average Infant Mortality Rates by Race, Kent County, Delaware, 2001-2021

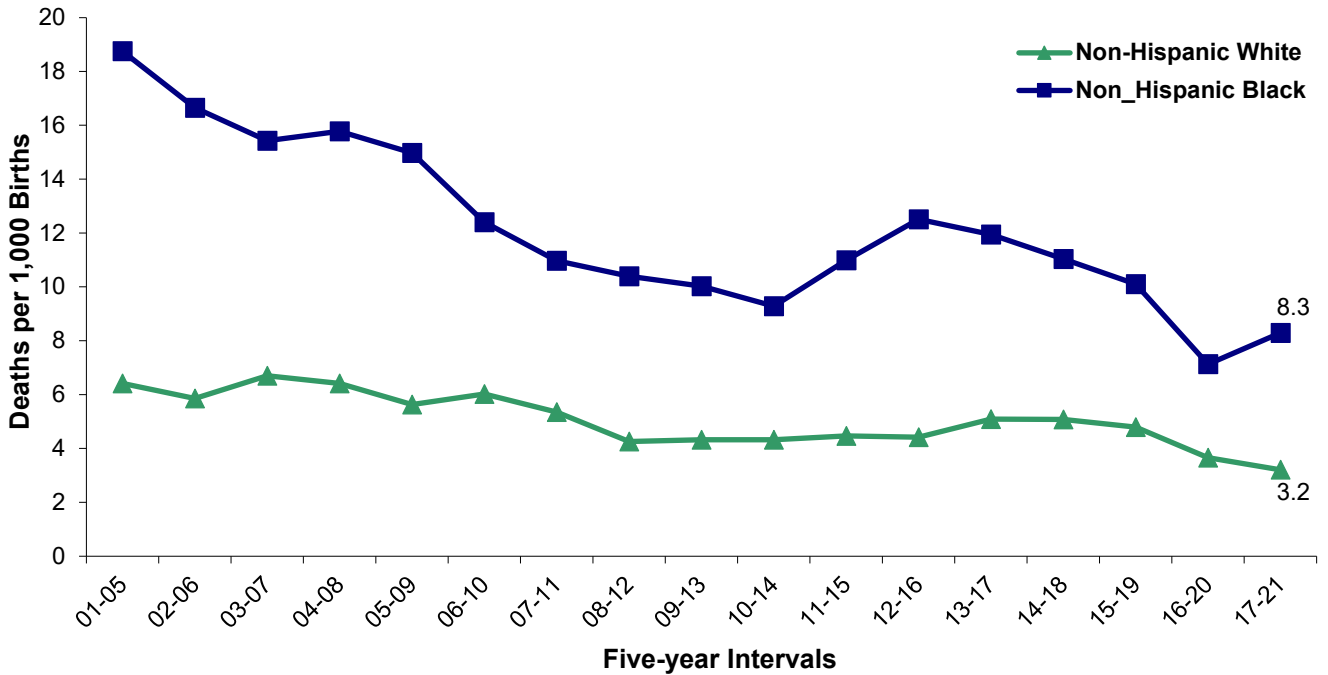


Source: Delaware Department of Health and Social Services, Division of Public Health, Delaware Health Statistics Center

INFANT MORTALITY- Leading Causes of Death

Sussex County's non-Hispanic black IMR decreased to 8.3 infant deaths per 1,000 live births in 2017-2021, a 56 percent decrease from the 2001-2005 peak of 18.8 infant deaths per 1,000 live births. Sussex County's non-Hispanic white IMR had a 52 percent decrease from its peak in 2003-2007 to 2017-2021 (6.7 to 3.2 infant deaths per 1,000 live births). Sussex County had the smallest disparity between the races with non-Hispanic black IMRs 2.5 times higher than non-Hispanic white IMRs in 2017-2021.

Figure 33. Five-year Average Infant Mortality Rates by Race, Sussex County, Delaware, 2001-2021



Source: Delaware Department of Health and Social Services, Division of Public Health, Delaware Health Statistics Center

INFANT MORTALITY- Leading Causes of Death

In 2017-2021 there were 311 infant deaths. The five leading causes of infant death in Delaware were:

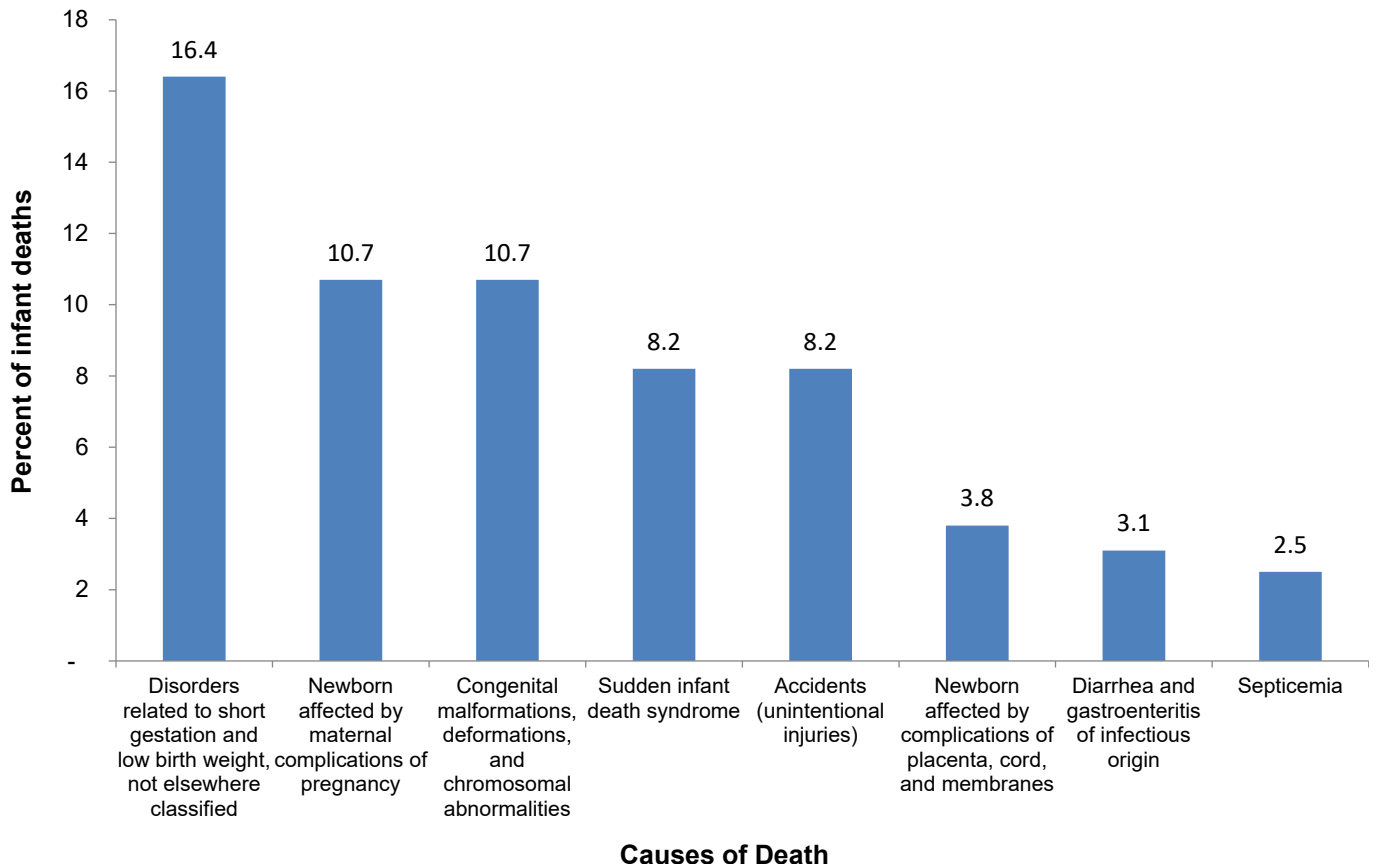
- Disorders related to short gestation and and low birthweight, which accounted for 19.0 percent of infant deaths.
- Congenital anomalies (birth defects), which accounted for 17.4 percent of infant deaths.
- Newborns affected by maternal complications of pregnancy, which accounted for 8.7 percent of infant deaths. Of the 27 deaths attributed to this cause, 21 were due to the newborn being affected by incompetent cervix and premature rupture of membranes
- Sudden infant death syndrome (SIDS), which accounted for 7.1 percent of all infant deaths.
- Accidents (unintentional injuries), which accounted for 5.1 percent of infant deaths.

In sum, the five most common causes of infant death accounted for 57.2 percent, or 178 of the 311 total infant deaths.

The most frequent causes of death by race are shown in Figures 34-36. Birth defects and disorders related to short gestation and low birthweight were the top two most frequent causes of death of non-Hispanic white and Hispanic infants.

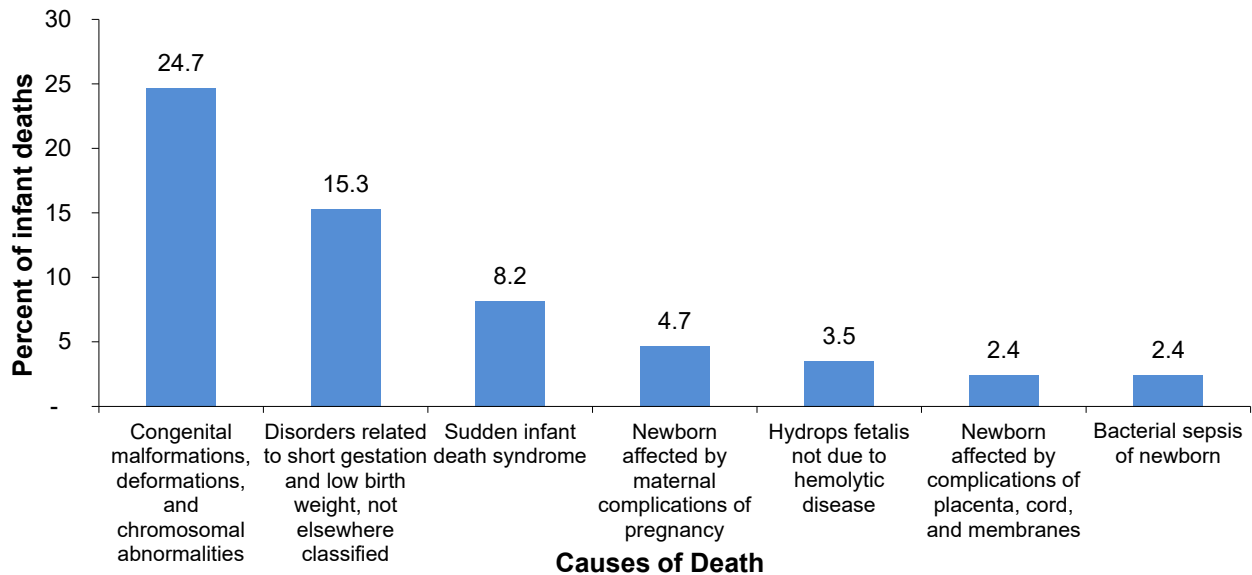
Though the proportions of deaths by race were similar for many of the causes of death, notable exceptions were accidents and and birth defects. In 2017-2021, while accidents were responsible for one percent of all non-Hispanic white infant deaths, they accounted for eight percent of non-Hispanic black infant deaths. In 2017-2021, infant deaths due to birth defects also accounted for larger percentages of non-Hispanic black infant deaths (25 percent) than non-Hispanic white infant deaths (11 percent).

Figure 34. Percentage of the Most Frequent Causes of Non-Hispanic Black Infant Deaths, Delaware, 2017-2021



Source: Delaware Department of Health and Social Services, Division of Public Health, Delaware Health Statistics Center

Figure 35. Percentage of the Most Frequent Causes of Non- Hispanic White Infant Deaths, Delaware 2017-2021

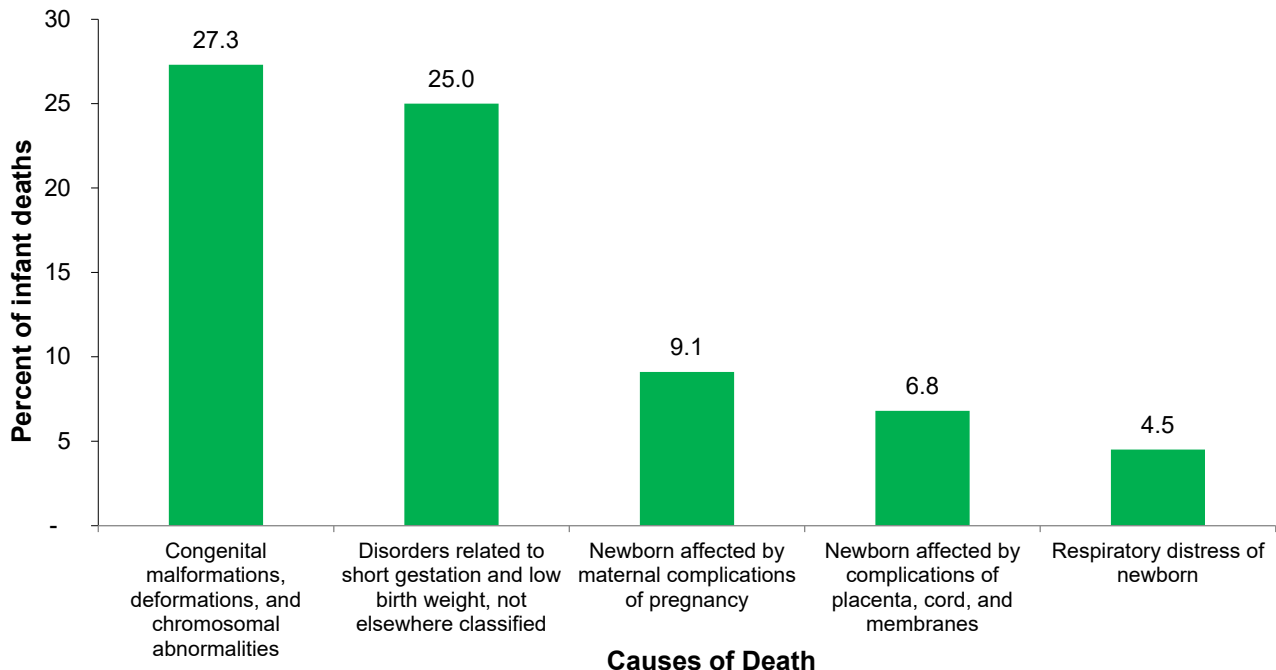


Source: Delaware Department of Health and Social Services, Division of Public Health, Delaware Health Statistics Center

In 1989-1993, Hispanic births accounted for 3.6 percent of all live births and 3.4 percent of infant deaths; since that time, the proportion of births to Hispanic mothers has more than quadrupled. In the most recent five-year period, 2017-2021, 17.0 percent of all live births were to Hispanic mothers, and 14.1 percent of all infant deaths were of Hispanic origin.

Two causes of death accounted for the greatest number of Hispanic infant deaths: birth defects and disorders related to prematurity and low birthweight.

Figure 36. Percentage of the Most Frequent Causes of Hispanic Infant Death, Delaware, 2017-2021

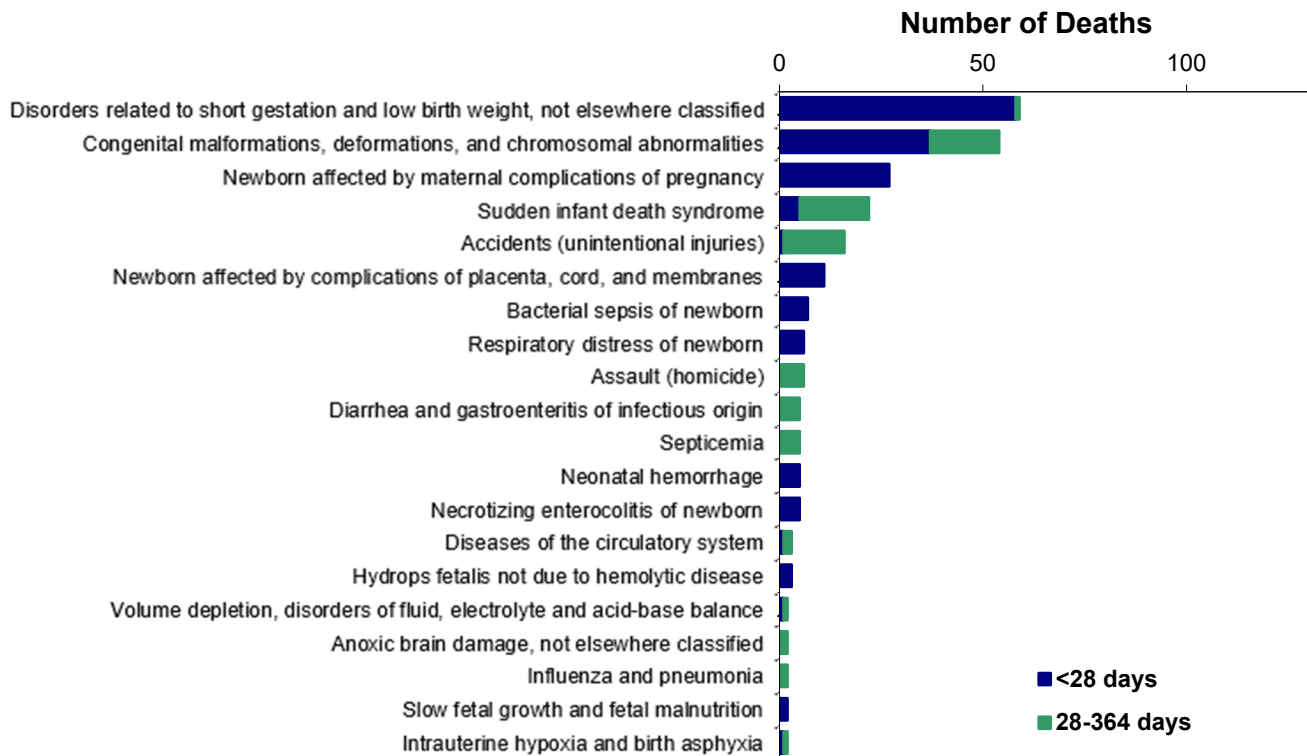


Source: Delaware Department of Health and Social Services, Division of Public Health, Delaware Health Statistics Center

INFANT MORTALITY- Leading Causes of Death

In 2017-2021, approximately 91.3 percent of all infant deaths occurred within the first six months of life, 66 percent occurred within the first 28 days of life, and 39 percent occurred within 24 hours of birth.

Figure. 37 Most Frequent Causes of Infant Death, Delaware, 2017-2021



Source: Delaware Department of Health and Social Services, Division of Public Health, Delaware Health Statistics Center

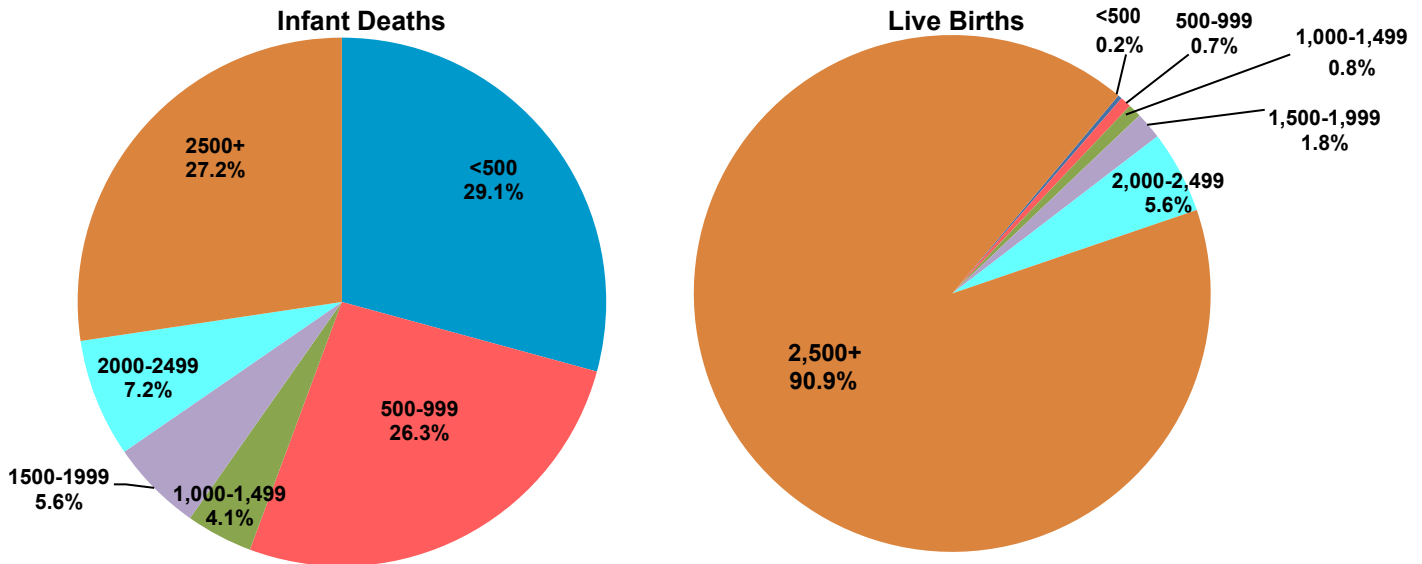
Figure 37 displays deaths by specific cause and the infant's age classification at death: neonatal (<28 days), or postneonatal (28-364 days).

- Prematurity and low birthweight accounted for the greatest number of infant deaths in 2017-2021; 98 percent of these deaths occurred in the neonatal period.
- The majority of sudden infant death syndrome (SIDS) deaths occurred in the postneonatal period, with a mean age at death of 88 days. SIDS deaths decreased 24 percent from 2012-2016 to 2017-2021 (29 to 22 SIDS deaths). The number of infant deaths in 2017-2021 (311) decreased 25 percent from the number of infant deaths in 2012-2016 (413).
- Twenty seven percent (6 out of 22) of the SIDS deaths were associated with co-sleeping and/or sleeping on soft surfaces, such as couches and adult beds.
- In 2017-2021, there were 14 additional infant deaths coded under a different cause of death that were associated with co-sleeping and/or sleeping on a soft surface. In total, six percent of all infant deaths were associated with co-sleeping and/or unsafe sleep practices.

INFANT MORTALITY - Live Birth Cohort

Although only 1 percent of all live births in 2016-2020 were infants weighing less than 1,000 grams, they accounted for over half (55 percent) of all infant deaths. In total, nine percent of all live births in 2016-2020 were infants of low birthweight (under 2,500 grams) and 72 percent of infant deaths were low birthweight.

Figure 38. Percent Distribution by Birthweight in Grams, Delaware, Live Birth Cohort, 2016-2020

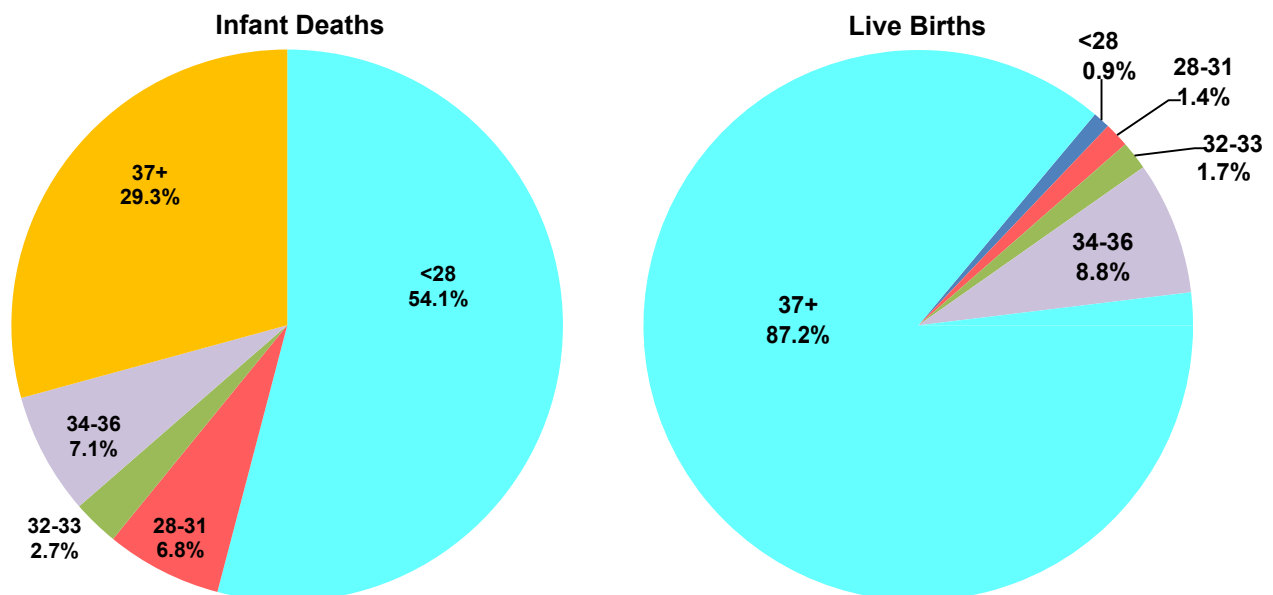


Source: Delaware Department of Health and Social Services, Division of Public Health, Delaware Health Statistics Center

Gestation and infant death demonstrated the same relationship as birthweight and infant death. Infants born at the youngest gestational age made up a very small percentage of live births, yet they accounted for the majority of infant deaths.

One percent of live births in 2016-2020 were less than 28 weeks gestation at birth, but they accounted for 54.1 percent of all infant deaths. In total, 12.7 percent of all live births in 2016-2020 were born preterm (<37 weeks of gestation) and 70.7 percent of infant deaths were preterm.

Figure 39. Distribution by Gestation in Weeks, Delaware, Live Birth Cohort, 2016-2020



Source: Delaware Health and Social Services, Division of Public Health, Delaware Health Statistics Center

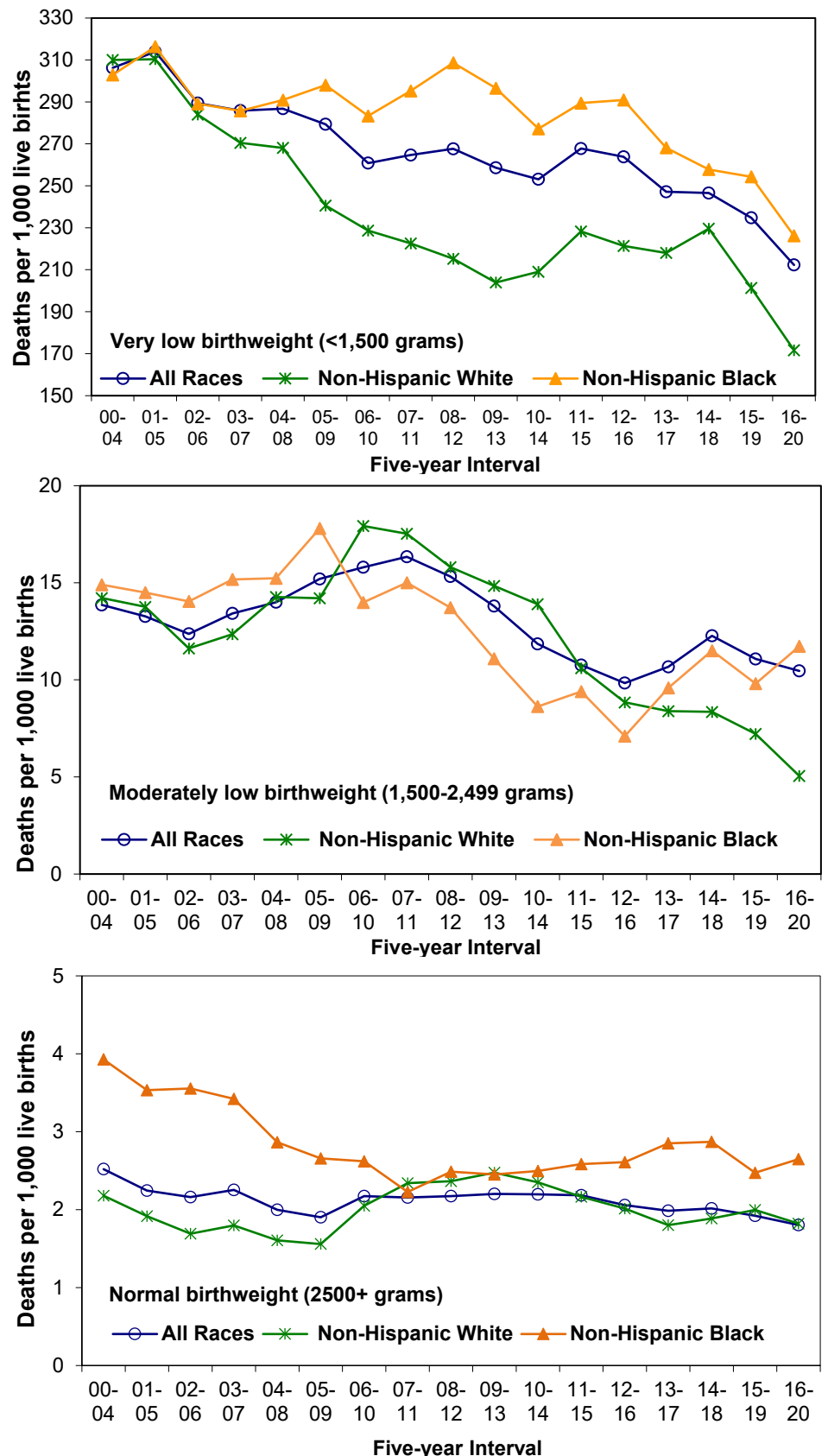
Birthweight and gestation are considered to be the most important predictors of infant health and mortality risk. Infants born too small or too early have a much greater risk of mortality than those who reach a normal birthweight (2,500+ grams) or full-term gestation (37+ weeks).

Although the IMRs decreased for both non-Hispanic white and non-Hispanic black for very low birthweight (VLBW) (<1,500 grams) since 2001-2005, the non-Hispanic black IMR of 226.2 was significantly higher than the non-Hispanic white IMR of 171.6 infant deaths per 1,000 live births in 2016-2020.

IMRs for moderately low birthweight infants of all races decreased 36 percent from its high point in 2007-2011 to 2016-2020. During that time, non-Hispanic white IMRs decreased 71 percent while the non-Hispanic black IMR decreased by 22 percent, making the non-Hispanic black IMR higher than the non-Hispanic white IMR (11.7 vs 5.1).

In 2007-2011 IMRs for normal birthweight non-Hispanic white and non-Hispanic black infants were nearly the same at 2.3 and 2.2, respectively. By 2016-2020, the non-Hispanic white IMR decreased 22 percent to 1.8 but the non-Hispanic black IMR increased 18 percent to 2.6 infant deaths per 1,000 live births. The IMR for all races had a 18 percent decrease for the same time period.

Figure 40. Five-year Average Infant Mortality Rates by Birthweight and Race, Delaware, 2001-2020 Live Birth Cohort

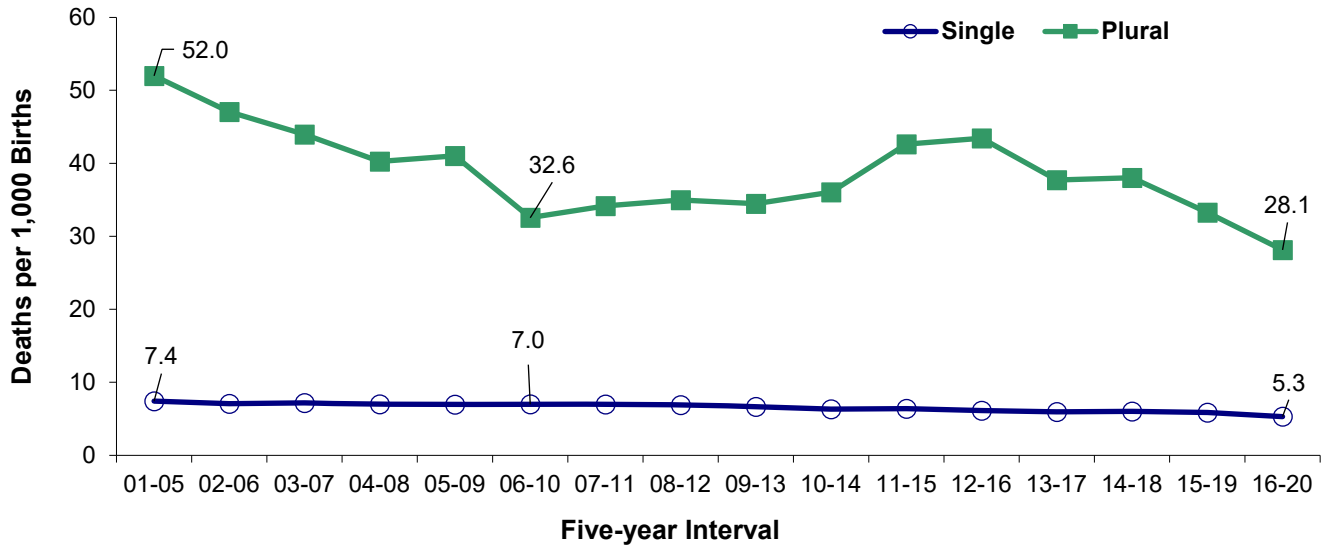


Source: Delaware Department of Health and Social Services, Division of Public Health, Delaware Health Statistics Center

INFANT MORTALITY - Live Birth Cohort

From 2001-2005 to 2006-2010, IMRs for plural births decreased 37 percent, from 52 to 33 infant deaths per 1,000 live births. Since 2006-2010, IMRs for plural births decreased 14 percent from 32.6 to 28.1 infant deaths per 1,000 live births. IMRs for singleton births decreased 28 percent from 2001-2005 to 2016-2020. In 2016-2020, the infant mortality rate for plural births was five times that of singleton births (28.1 versus 5.3 infant deaths per 1,000 live births, respectively).

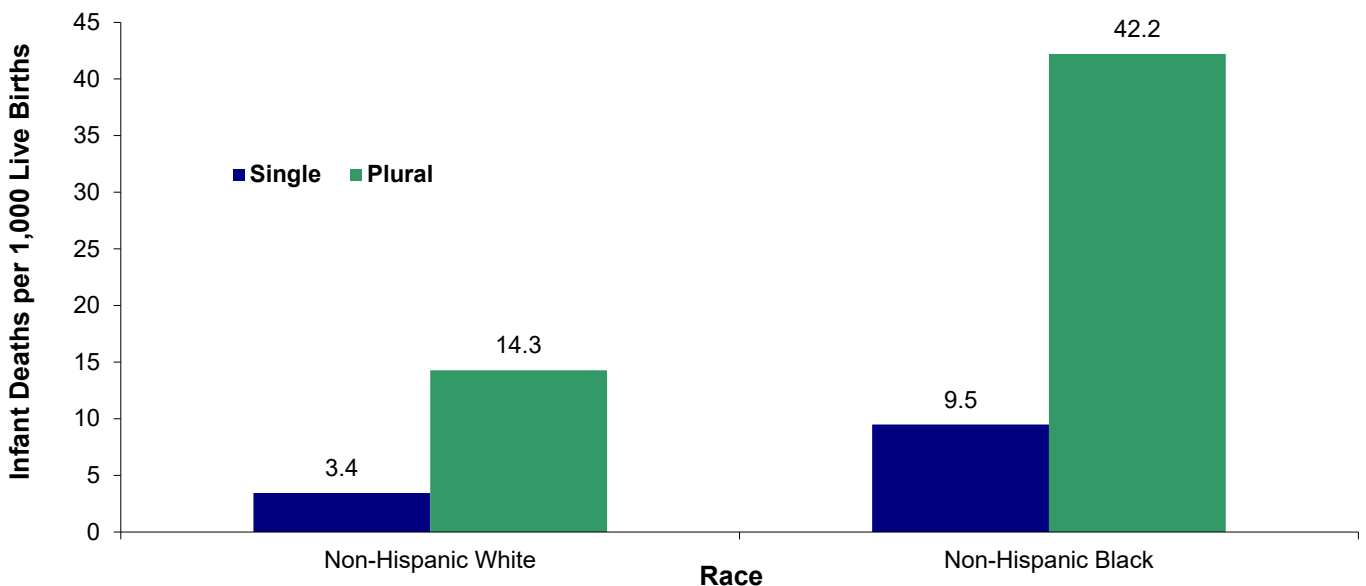
Figure 41. Five-year Average Infant Mortality Rates by Plurality, Delaware, Live Birth Cohort, 2001-2020



Source: Delaware Department of Health and Social Services, Division of Public Health, Delaware Health Statistics Center

The difference between singleton and plural IMRs was evident regardless of race. The non-Hispanic black IMR was more than twice the non-Hispanic white IMR for singleton births and nearly three times greater for plural births.

Figure 42. Five-year Average Infant Mortality Rates by Plurality and Race, Delaware, Live Birth Cohort, 2016-2020



Source: Delaware Department of Health and Social Services, Division of Public Health, Delaware Health Statistics Center

TABLE E-1. NUMBER OF INFANT DEATHS BY RACE, COUNTY, AND CITY OF WILMINGTON, U.S., DELAWARE, 2004-2021

Area/ Race	2004	2005	2006	2007	2008	2009	2010	2011	2012	2013	2014	2015	2016	2017	2018	2019	2020	2021
U.S.																		
All Races	27,860	28,384	28,509	29,153	28,075	26,408	24,572	24,001	23,654	23,446	23,211	23,458	23,157	22,341	21,498	20,927	N/A	N/A
Non-Hispanic White	13,001	13,134	12,884	13,005	12,509	11,785	11,192	10,886	10,759	10,766	10,515	10,444	10,204	9,520	9,059	8,603	N/A	N/A
Non-Hispanic Black	7,869	7,958	8,241	8,351	7,894	7,560	6,758	6,670	6,528	6,488	6,435	6,624	6,545	6,390	5,933	5,821	N/A	N/A
Non-Hispanic Other	1,334	1,380	1,368	1,516	1,452	1,397	1,324	1,338	1,363	1,280	1,273	1,401	1,380	1,402	2,203	2,041	N/A	N/A
Delaware																		
All Races	97	106	99	91	101	91	88	98	84	68	74	100	87	72	62	68	56	53
Non-Hispanic White	43	36	39	33	37	24	38	39	24	22	27	38	23	18	19	16	22	10
Non-Hispanic Black	44	53	44	38	49	52	35	38	43	33	29	38	39	37	33	35	24	30
Non-Hispanic Other	2	3	4	1	0	7	4	10	6	1	6	6	8	3	2	7	5	6
Kent																		
All Races	17	21	13	9	18	18	15	17	17	6	13	23	14	8	13	17	18	12
Non-Hispanic White	8	6	7	4	7	6	11	10	5	5	8	8	2	0	5	5	7	2
Non-Hispanic Black	8	14	5	4	7	12	3	3	10	1	4	9	8	7	7	9	9	8
Non-Hispanic Other	1	1	1	1	0	0	0	1	0	0	0	1	1	0	1	2	2	2
New Castle																		
All Races	60	68	68	60	70	57	58	74	58	48	49	54	62	48	37	44	34	27
Non-Hispanic White	25	23	22	19	25	13	17	24	16	12	14	19	16	11	9	8	12	6
Non-Hispanic Black	27	30	35	27	36	33	29	34	28	27	20	23	27	26	23	23	15	16
Non-Hispanic Other	0	2	2	0	0	5	3	9	6	1	6	4	7	3	0	5	3	3
Wilmington																		
All Races	12	18	16	17	19	18	18	17	20	14	14	10	18	15	13	13	3	7
Non-Hispanic White	1	1	1	1	2	0	1	2	4	0	3	2	0	1	1	2	0	0
Non-Hispanic Black	8	14	14	14	10	15	13	15	11	11	7	4	14	10	12	7	3	6
Non-Hispanic Other	0	0	0	0	0	2	0	0	1	0	1	1	2	2	0	0	0	0
Balance of NC County																		
All Races	48	50	52	43	51	39	40	57	38	34	35	44	44	33	24	31	31	20
Non-Hispanic White	24	22	21	18	23	13	16	22	12	12	11	17	16	10	8	6	12	6
Non-Hispanic Black	19	16	21	13	26	18	16	19	17	16	13	19	13	16	11	16	12	10
Non-Hispanic Other	0	2	2	0	0	3	3	9	5	1	5	3	5	1	0	5	3	3
Sussex																		
All Races	20	17	18	22	13	16	15	7	9	14	12	23	11	16	12	7	4	14
Non-Hispanic White	10	7	10	10	5	5	10	5	3	5	5	11	5	7	5	3	3	2
Non-Hispanic Black	9	9	4	7	6	7	3	1	5	5	5	6	4	4	3	3	0	6
Non-Hispanic Other	1	0	1	0	0	2	1	0	0	0	0	1	0	0	1	0	0	1

Notes:

- *Based on NCHS estimate.
- Infant deaths refer to deaths to children under one year of age.

Sources: National Center for Health Statistics
 Delaware Department of Health and Social Services, Division of Public Health, Delaware Health Statistics Center

TABLE E-2. NUMBER OF NEONATAL DEATHS BY RACE, COUNTY, AND CITY OF WILMINGTON, U.S., DELAWARE, 2004-2021

Area/ Race	2004	2005	2006	2007	2008	2009	2010	2011	2012	2013	2014	2015	2016	2017	2018	2019	2020	2021
U.S.																		
All Races	18,602	18,782	19,041	19,094	18,238	17,261	16,193	16,065	15,887	15,893*	15,737	15,672	15,303	14,844	14,329	13,834	N/A	N/A
Non-Hispanic White	8,499	8,452	8,410	8,329	7,936	7,515	7,251	7,103	7,070	7,119*	6,923	6,724	6,486	6,191	5,873	5,589	N/A	N/A
Non-Hispanic Black	5,283	5,332	5,525	5,484	5,159	4,957	4,395	4,437	4,354	4,355*	4,361	4,348	4,323	4,150	3,897	3,754	N/A	N/A
Non-Hispanic Other	851	895	885	982	916	909	867	893	912	869*	869	937	925	924	1,523	1,400	N/A	N/A
Delaware																		
All Races	63	79	72	65	68	66	58	73	66	47	55	79	57	48	43	46	36	31
Non-Hispanic White	28	25	28	25	23	15	24	24	16	12	18	32	10	14	12	12	14	6
Non-Hispanic Black	28	39	33	28	35	39	25	35	34	25	20	31	27	22	23	20	14	16
Non-Hispanic Other	2	3	3	0	0	7	4	7	6	1	5	3	7	3	2	4	5	3
Kent																		
All Races	11	14	7	6	12	14	11	13	12	3	10	17	9	5	9	15	10	7
Non-Hispanic White	5	3	4	3	4	4	8	6	3	3	7	7	1	0	3	4	4	1
Non-Hispanic Black	5	10	3	3	5	10	2	3	8	0	2	6	5	5	5	8	4	5
Non-Hispanic Other	1	1	0	0	0	0	0	1	0	0	0	0	1	0	1	2	2	1
New Castle																		
All Races	39	54	52	43	48	42	36	57	47	34	37	49	43	36	27	28	24	15
Non-Hispanic White	16	17	15	14	16	9	8	16	12	6	7	17	7	11	6	7	8	3
Non-Hispanic Black	18	23	28	20	27	23	22	32	21	22	16	23	20	16	17	11	10	8
Non-Hispanic Other	0	2	2	0	0	5	3	6	6	1	5	3	6	3	0	2	3	2
Wilmington																		
All Races	9	15	12	10	10	14	10	14	18	11	12	10	15	9	9	6	2	2
Non-Hispanic White	1	1	0	1	0	0	0	1	4	0	3	2	0	1	1	2	0	0
Non-Hispanic Black	6	11	11	9	6	11	9	13	9	8	5	4	11	5	8	2	2	1
Non-Hispanic Other	0	0	0	0	0	2	0	0	1	0	1	1	2	2	0	0	0	0
Balance of NC County																		
All Races	30	39	40	33	38	28	26	43	29	23	25	39	28	27	18	22	22	13
Non-Hispanic White	15	16	15	13	16	9	8	15	8	6	4	15	7	10	5	5	8	3
Non-Hispanic Black	12	12	17	11	21	12	13	19	12	14	11	19	9	11	9	9	8	7
Non-Hispanic Other	0	2	2	0	0	3	3	6	5	1	4	2	4	1	0	2	3	2
Sussex																		
All Races	13	11	13	16	8	10	11	3	7	10	8	13	5	7	7	3	2	9
Non-Hispanic White	7	5	9	8	3	2	8	2	1	3	4	8	2	3	3	1	2	2
Non-Hispanic Black	5	6	2	5	3	6	1	0	5	3	2	2	2	1	1	1	0	3
Non-Hispanic Other	1	0	1	0	0	2	1	0	0	0	0	0	0	0	1	0	0	0

- Notes:
 1. *Based on NCHS estimate.
 2. Neonatal deaths refer to deaths of children under 28 days of age.

Sources: National Center for Health Statistics,
 Delaware Department of Health and Social Services, Division of Public Health, Delaware Health Statistics Center

TABLE E-3. NUMBER OF POSTNEONATAL DEATHS BY RACE, COUNTY, AND CITY OF WILMINGTON, U.S., DELAWARE 2004-2021

Area/ Race	2005	2006	2007	2008	2009	2010	2011	2012	2013	2014	2015	2016	2017	2018	2019	2020	2021
U.S.																	
All Races	9,602	9,468	10,059	9,837	9,147	8,379	7,936	7,767	7,553*	7,474	7,786	7,854	7,497	7,169	7,093	N/A	N/A
Non-Hispanic White	4,682	4,474	4,676	4,573	4,270	3,941	3,783	3,689	3,647*	3,592	3,720	3,718	3,329	3,186	3,014	N/A	N/A
Non-Hispanic Black	2,626	2,716	2,867	2,735	2,603	2,363	2,233	2,174	2,133*	2,074	2,276	2,222	2,240	2,037	2,067	N/A	N/A
Non-Hispanic Other	485	483	534	536	488	457	445	451	411*	404	464	455	478	679	641	N/A	N/A
Delaware																	
All Races	27	27	26	33	25	30	25	18	21	19	21	30	24	19	22	20	22
Non-Hispanic White	11	11	8	14	9	14	15	8	10	9	6	13	4	7	4	8	4
Non-Hispanic Black	14	11	10	14	13	10	3	9	8	9	7	12	15	10	15	10	14
Non-Hispanic Other	0	1	1	0	0	0	3	0	0	1	3	1	0	0	3	0	3
Kent																	
All Races	7	6	3	6	4	4	4	5	3	3	6	5	3	4	2	8	5
Non-Hispanic White	3	3	1	3	2	3	4	2	2	1	1	1	0	2	1	3	1
Non-Hispanic Black	4	2	1	2	2	1	0	2	1	2	3	3	2	2	1	5	3
Non-Hispanic Other	0	1	1	0	0	0	0	0	0	0	1	0	0	0	0	0	1
New Castle																	
All Races	14	16	17	22	15	22	17	11	14	12	5	19	12	10	16	10	12
Non-Hispanic White	6	7	5	9	4	9	8	4	6	7	2	9	0	3	1	4	3
Non-Hispanic Black	7	7	7	9	10	7	2	7	5	4	0	7	10	6	12	5	8
Non-Hispanic Other	0	0	0	0	0	0	3	0	0	1	1	1	0	0	3	0	1
Wilmington																	
All Races	3	4	7	9	4	8	3	2	3	2	0	3	6	4	7	1	5
Non-Hispanic White	0	1	0	2	0	1	1	0	0	0	0	0	0	0	0	0	0
Non-Hispanic Black	3	3	5	4	4	4	2	2	3	2	0	3	5	4	5	1	5
Non-Hispanic Other	0	0	0	0	0	0	0	0	0	0	0	0	0	0	0	0	0
Balance of NC County																	
All Races	11	12	10	13	11	14	14	9	11	10	5	16	6	6	9	9	7
Non-Hispanic White	6	6	5	7	4	8	7	4	6	7	2	9	0	3	1	4	3
Non-Hispanic Black	4	4	2	5	6	3	0	5	2	2	0	4	5	2	7	4	3
Non-Hispanic Other	0	0	0	0	0	0	3	0	0	1	1	1	0	0	1	0	1
Sussex																	
All Races	6	5	6	5	6	4	4	2	4	4	10	6	9	5	4	2	5
Non-Hispanic White	2	1	2	2	3	2	3	2	2	1	3	3	4	2	2	1	0
Non-Hispanic Black	3	2	2	3	1	2	1	0	2	3	4	2	3	2	2	0	3
Non-Hispanic Other	0	0	0	0	0	0	0	0	0	0	1	0	0	0	0	0	1

Notes:

1. *Based on NCHS estimate.
2. Postneonatal deaths refer to deaths of children 28 to 364 days of age.

Sources: National Center for Health Statistics, Delaware Department of Health and Social Services, Division of Public Health, Delaware Health Statistics Center

TABLE E- 4. FIVE-YEAR AVERAGE INFANT MORTALITY RATES BY RACE, COUNTY, AND CITY OF WILMINGTON, U.S., DELAWARE 2004-2021

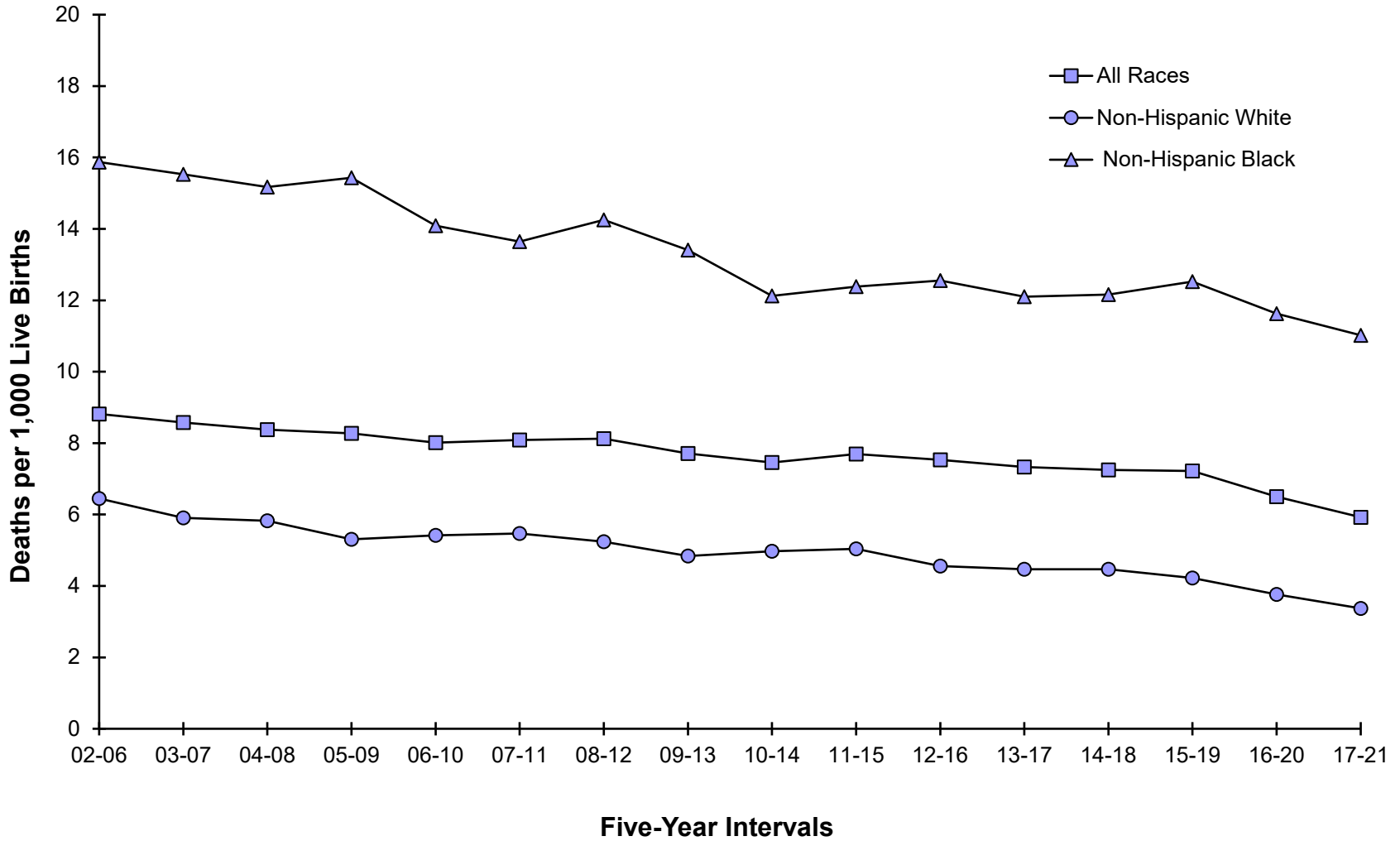
Area/ Race	2004 -2008	2005 -2009	2006 -2010	2007 -2011	2008 -2012	2009 -2013	2010 -2014	2011 -2015	2012 -2016	2013 -2017	2014 -2018	2015 -2019	2016 -2020	2017 -2021
U.S.														
All Races	6.7	6.7	6.5	6.4	6.2	6.1	6.0	5.9	5.9	5.9	5.8	5.8	N/A	N/A
Non-Hispanic White	5.6	5.6	5.4	5.3	5.2	5.1	5.0	5.0	5.0	4.9	4.8	4.7	N/A	N/A
Non-Hispanic Black	13.3	13.1	12.7	12.3	11.8	11.5	11.2	11.2	11.1	11.1	10.9	10.8	N/A	N/A
Delaware														
All Races	8.4+	8.3+	8.0+	8.1+	8.1+	7.7+	7.5+	7.7+	7.5+	7.3+	7.3+	7.2+	6.5	5.9
Non-Hispanic White	5.8	5.3	5.4	5.5	5.2	4.8	5	5	4.6	4.5	4.5	4.2	3.8	3.4
Non-Hispanic Black	15.2	15.4+	14.1	13.6	14.3+	13.4	12.1	12.4	12.6	12.1	12.2	12.5	11.6	11
Kent														
All Races	7.1	7.1	6.5	6.9	7.6	6.6	6.2	6.9	6.5	5.8	6.4	6.9	6.5	6.4
Non-Hispanic White	4.6	4.3	5.0	5.5	5.6	5.5	5.8	5.4	4.2	3.6	3.6	3.3	---	---
Non-Hispanic Black	13.3	14.2	10.2	9.5	11.6	9.6	7.0	8.9	10.3	9.1	11.0	12.4	12.3	12.4
New Castle														
All Races	9.0	9.0	8.8	9.1	9.3	8.8	8.7	8.6	8.4	8.1	7.8	7.8	7.2	6.2
Non-Hispanic White	6.1	5.6	5.3	5.5	5.4	4.8	4.9	5.1	4.8	4.6	4.6	4.3	4.1	3.5
Non-Hispanic Black	15.6	15.9	15.6	15.5	15.9	15.3	14.3	13.8	13.3	13.2	12.8	13.1	12.3	11.1
Wilmington														
All Races	13.0	13.8	14.1	14.8	16.1	15.9	15.8	14.6	15.1	14.3	14.5	14.8	13.8	11.8
Non-Hispanic White	---	---	---	---	---	---	---	---	---	---	---	---	---	---
Non-Hispanic Black	15.7	17.1	17.4	18.5	18.7	20.2	19.2	16.3	16.4	16.3	16.9	17.1	17.2	14.9
Balance of NC County														
All Races	8.2	8.0	7.7	7.9	7.9	7.5	7.3	7.5	7.1	7.0	6.6	6.5	6.1	5.3
Non-Hispanic White	6.1	5.7	5.5	5.6	5.4	4.8	4.7	4.9	4.6	4.6	4.4	4.2	4.0	3.4
Non-Hispanic Black	15.5	15.1	14.5	13.8	14.4	12.9	12.2	12.6	11.9	11.8	11.1	11.4	10.3	9.7
Sussex														
All Races	7.6	7.2	7.0	6.2	5.2	5.4	5.1	5.8	6.1	6.7	6.5	6.0	4.4	4.7
Non-Hispanic White	6.4	5.6	6.0	5.4	4.3	4.3	4.3	4.5	4.4	5.1	5.1	4.8	3.7	3.2
Non-Hispanic Black	15.8	15.0	12.4	11.0	10.4	10.0	---	11.0	12.5	11.9	11.0	10.1	---	---

Notes:

- 2010-2014 U.S. data are based on NCHS estimates.
- Infant mortality rates represent the number of deaths of children under one year of age per 1000 live births.
- '+' indicates that the Delaware rate is significantly higher than the U.S. rate.
'-' indicates that the Delaware rate is significantly lower than the U.S. rate.
- '---' Indicates rate does not meet standard of reliability or precision; based on fewer than 20 deaths in the numerator.
- No statistical comparisons were made between the county rates and the U.S. rate due to small numbers. See Appendix C for details.

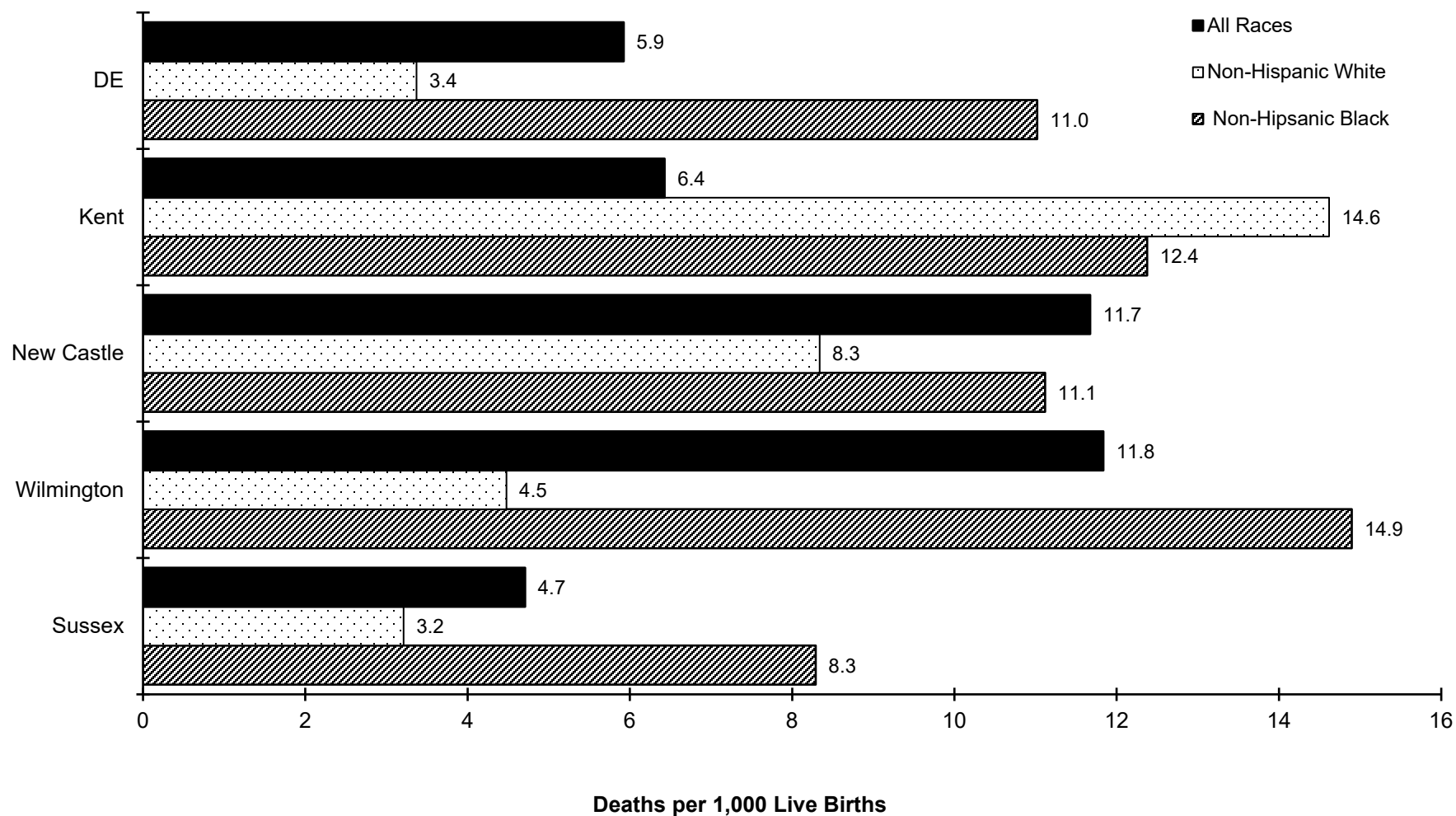
Sources: National Center for Health Statistics,
Delaware Department of Health and Social Services, Division of Public Health, Delaware Health Statistics Center

Figure E-1. Five-Year Average Infant Mortality Rates by Race, Delaware, 2004-2021



Source: Delaware Department of Health and Social Services, Division of Public Health, Delaware Health Statistics Center

Figure E-2. Five-Year Average Infant Mortality Rates by Race, Delaware, Counties and the City of Wilmington, 2017-2021



Source: Delaware Department of Health and Social Services, Division of Public Health, Delaware Health Statistics Center

TABLE E-5. FIVE-YEAR AVERAGE NEONATAL MORTALITY RATES BY RACE, COUNTY, AND CITY OF WILMINGTON, U.S., DELAWARE 2004-2021

Area/ Race	2004 -2008	2005 -2009	2006 -2010	2007 -2011	2008 -2012	2009 -2013	2010 -2014	2011 -2015	2012 -2016	2013 -2017	2014 -2018	2015 -2019	2016 -2020	2017 -2021
U.S.														
All Races	4.4	4.4	4.3	4.2	4.1	4.1	4.0	4.0	4.0	3.9	3.9	3.8	N/A	N/A
Non-Hispanic White	3.6	3.6	3.5	3.4	3.4	3.3	3.3	3.3	3.2	3.2	3.1	3.0	N/A	N/A
Non-Hispanic Black	8.8	8.6	8.3	8.1	7.8	7.6	7.5	7.5	7.4	7.3	7.2	7.1	N/A	N/A
Delaware														
All Races	5.9+	5.9+	5.6+	5.7+	5.8+	5.6+	5.4+	5.8+	5.5+	5.2+	5.2+	5.1+	4.3	3.9
Non-Hispanic White	4	3.6	3.6	3.5	3.3	3	3.1	3.4	3	3	3.1	3	2.4	2.3
Non-Hispanic Black	10.8+	11.4+	10.3+	10.4+	11.0+	10.5+	9.5+	9.9+	9.5+	8.6	8.5	8.5	7.3	6.6
Kent														
All Races	4.6	4.7	4.4	5.0	5.6	4.8	4.4	5.0	4.6	4.0	4.5	5.1	4.5	4.3
Non-Hispanic White	---	---	3.3	3.6	3.6	3.5	4.0	3.9	3.2	---	---	---	---	---
Non-Hispanic Black	9.1	10.5	7.6	7.5	9.3	7.6	---	---	6.8	---	7.2	9.0	8.3	8.4
New Castle														
All Races	6.5	6.7	6.2	6.4	6.7	6.5	6.4	6.8	6.5	6.2	6.0	5.8	5.1	4.2
Non-Hispanic White	4.1	3.9	3.5	3.5	3.5	3.0	2.9	3.5	3.0	3.1	3.2	3.3	2.8	2.6
Non-Hispanic Black	11.7	11.9	11.7	12.1	12.4	12.1	11.7	11.9	10.9	10.4	9.9	9.3	8.0	6.7
Wilmington														
All Races	8.9	9.6	9.0	9.7	11.6	12.2	12.4	12.6	13.2	11.4	11.4	10.5	9.2	6.5
Non-Hispanic White	---	---	---	---	---	---	---	---	---	---	---	---	---	---
Non-Hispanic Black	11.2	12.3	12.1	13.2	14.0	15.6	14.8	13.3	12.9	11.7	11.9	10.9	10.5	---
Balance of NC County														
All Races	6.0	6.0	5.6	5.8	5.8	5.3	5.3	5.7	5.3	5.2	5.0	5.0	4.4	3.9
Non-Hispanic White	4.3	4.1	3.7	3.7	3.5	2.9	2.6	3.2	2.7	2.9	2.9	3.1	2.7	2.5
Non-Hispanic Black	11.9	11.7	11.4	11.4	11.6	10.5	10.4	11.3	9.9	9.8	9.1	8.7	7.0	6.6
Sussex														
All Races	5.2	4.9	4.9	4.1	3.4	3.6	3.5	3.7	3.8	3.8	3.5	3.1	2.1	2.5
Non-Hispanic White	4.9	4.1	4.5	3.5	---	---	---	---	---	3.1	3.1	---	---	---
Non-Hispanic Black	9.5	10.0	---	---	---	---	---	---	---	---	---	---	---	---

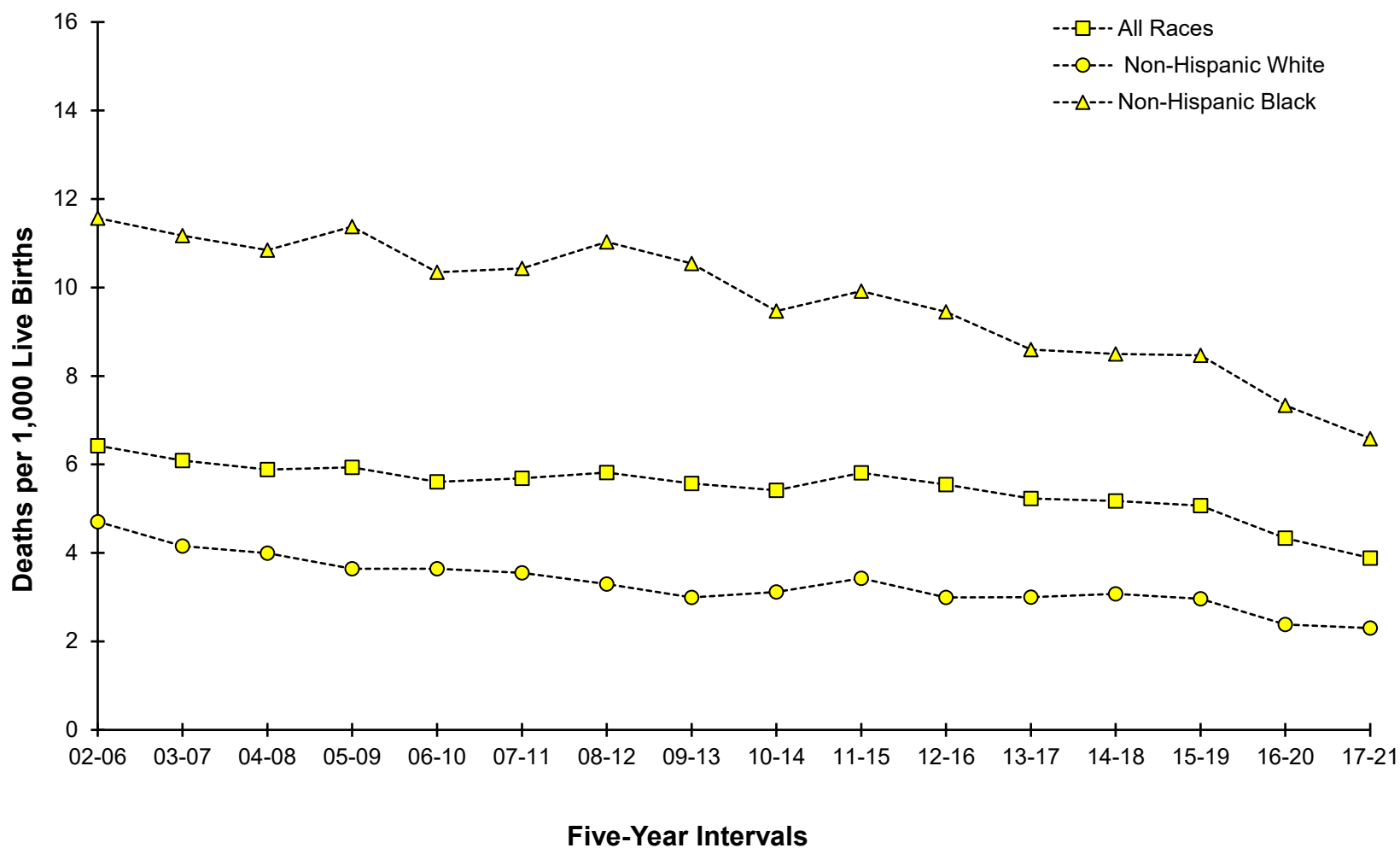
Notes:

1. 2006-2010 U.S. data are based on NCHS estimates.
2. Neonatal mortality rates represent the number of deaths of children under 28 days of age per 1000 live births.
3. '+' indicates that the Delaware rate is significantly higher than the U.S. rate.
4. "----" Indicates rate does not meet standard of reliability or precision; based on fewer than 20 deaths in the numerator.
5. No statistical comparisons were made between the county rates and the U.S. rate due to small numbers. See Appendix C for details.

Sources: National Center for Health Statistics

Delaware Department of Health and Social Services, Division of Public Health, Delaware Health Statistics Center

Figure E-3. Five-Year Average Neonatal Mortality Rates by Race, Delaware, 2002-2021



Source: Delaware Department of Health and Social Services, Division of Public Health, Delaware Health Statistics Center

TABLE E-6. FIVE-YEAR AVERAGE POSTNEONATAL MORTALITY RATES BY RACE, COUNTY, AND CITY OF WILMINGTON, U.S., DELAWARE, 2004-2021

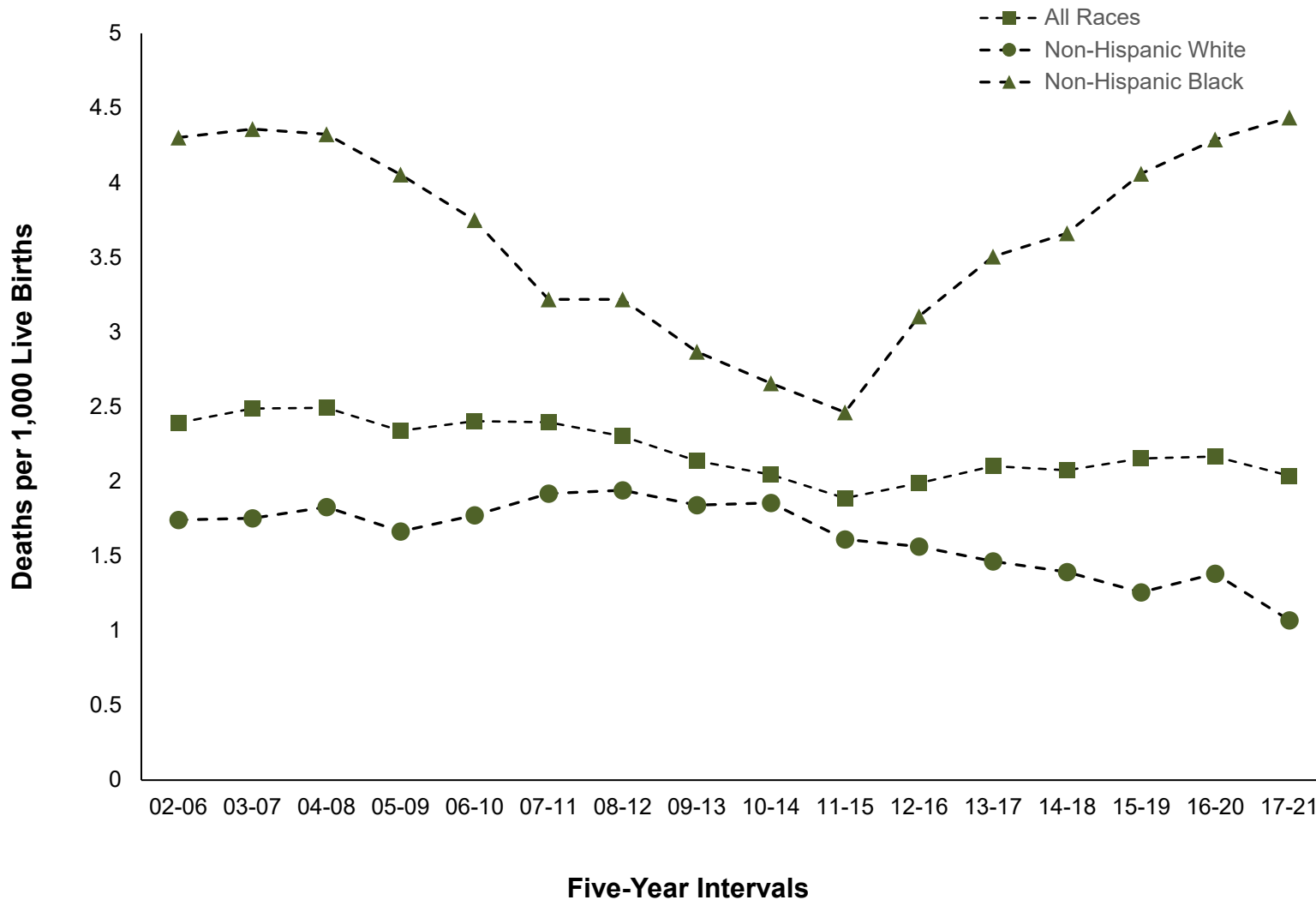
Area/ Race	2004 -2008	2005 -2009	2006 -2010	2007 -2011	2008 -2012	2009 -2013	2010 -2014	2011 -2015	2012 -2016	2013 -2017	2014 -2018	2015 -2019	2016 -2020	2017 -2021
U.S.														
All Races	2.3	2.3	2.2	2.2	2.1	2.0	2.0	1.9	1.9	1.9	1.9	1.9	N/A	N/A
Non-Hispanic White	2.0	2.0	1.9	1.9	1.9	1.8	1.7	1.7	1.7	1.7	1.7	1.7	N/A	N/A
Non-Hispanic Black	4.5	4.4	4.3	4.2	4.1	3.9	3.7	3.7	3.7	3.7	3.7	3.8	N/A	N/A
Delaware														
All Races	2.5	2.3	2.4	2.4	2.3	2.1	2	1.9	2	2.1	2.1	2.2	2.2	2
White Non-Hispanic	1.8	1.7	1.8	1.9	1.9	1.8	1.9	1.6	1.6	1.5	1.4	1.3	1.4	1.1
Black Non-Hispanic	4.3	4.1	3.7	3.2-	3.2	2.9-	2.7-	2.5-	3.1	3.5	3.7	4.1	4.3	4.4
Kent														
All Races	2.6	2.3	2.0	1.9	2.1	1.8	---	1.9	2.0	1.8	1.9	1.8	2.0	2.1
Non-Hispanic White	---	---	---	---	---	---	---	---	---	---	---	---	---	---
Non-Hispanic Black	---	---	---	---	---	---	---	---	---	---	---	---	---	---
New Castle														
All Races	2.5	2.3	2.6	2.7	2.5	2.4	2.3	1.8	1.9	1.9	1.8	2.0	2.2	2.0
Non-Hispanic White	1.9	1.7	1.9	2.0	2.0	1.8	2.0	1.6	1.7	1.5	1.4	---	---	---
Non-Hispanic Black	3.9	3.9	3.9	3.4	3.5	3.1	2.6	---	2.4	2.8	2.9	3.8	4.3	4.4
Wilmington														
All Races	4.1	4.2	5.1	5.2	4.6	3.7	---	---	---	---	---	4.3	4.7	5.3
Non-Hispanic White	---	---	---	---	---	---	---	---	---	---	---	---	---	---
Non-Hispanic Black	---	---	5.3	---	---	---	---	---	---	---	---	---	---	7.8
Balance of NC County														
All Races	2.1	1.9	2.1	2.1	2.1	2.1	2.1	1.8	1.9	1.8	1.6	1.6	1.7	1.4
Non-Hispanic White	1.9	1.6	1.8	1.9	1.9	1.8	2.1	1.7	1.9	1.7	1.5	---	---	---
Non-Hispanic Black	3.6	3.4	3.1	---	---	---	---	---	---	---	---	---	3.3	3.1
Sussex														
All Races	2.4	2.3	2.2	2.1	1.8	1.8	---	2.1	2.3	2.9	3.0	3.0	2.3	2.2
Non-Hispanic White	---	---	---	---	---	---	---	---	---	---	---	---	---	---
Non-Hispanic Black	---	---	---	---	---	---	---	---	---	---	---	---	---	---

Notes:

1. 2006-2010 U.S. data are based on NCHS estimates.
2. Postneonatal mortality rates represent the number of deaths of children 28 to 364 days of age per 1000 live births.
3. '-' indicates that the Delaware rate is significantly lower than the U.S. rate.
4. "----" Indicates rate does not meet standard of reliability or precision; based on fewer than 20 deaths in the numerator.
5. No statistical comparisons were made between the county rates and the U.S. rate due to small numbers. See Appendix C for details.

*Sources: National Center for Health Statistics
Delaware Department of Health and Social Services, Division of Public Health, Delaware Health Statistics Center*

Figure E-4. Five-Year Average Postneonatal Mortality Rates by Race, Delaware, 2002-2021



Source: Delaware Department of Health and Social Services, Division of Public Health, Delaware Health Statistics Center

TABLE E-7. FIVE-YEAR AVERAGE INFANT MORTALITY RATES BY SELECTED RISK MARKERS AND RACE OF MOTHER, DELAWARE, 2016-2020 LIVE BIRTH COHORT

Risk Factor	Non-Hispanic		
	All	White	Black
Birth Weight of Child			
<2500	48.0	29.2	60.4
<1500	212.3	171.6	226.2
1500-2499	10.5	---	---
2500+	1.8	1.8	2.6
Age of Mother			
<20	6.7	---	---
20-24	7.8	5.3	12.7
25-29	6.0	3.3	9.0
30+	5.3	3.5	10.7
Marital Status of Mother			
Married	4.3	3.1	9.2
Single	8.0	5.1	11.4
Education of Mother			
<12 years	7.6	5.4	12.4
H.S. diploma	8.4	5.9	13.0
1+ years college	4.1	2.7	7.8
Interval Since Last Live Birth			
<18 months	9.9	---	---
18+ months	4.8	3.7	8.2

Notes:

1. Infant mortality rates represent the number of deaths to children under one year of age per 1,000 live births.

Source: Delaware Department of Health and Social Services, Division of Public Health, Delaware Health Statistics Center

Leading causes of death	Gestational Age Category					% Born Very Preterm	% Born Preterm
	Very preterm	Moderately preterm	Term	Unknown	Total		
Disorders related to short gestation and low birth weight, not elsewhere classified	71	0	1	0	72	98.6	98.6
Congenital malformations, deformations, and chromosomal abnormalities	19	11	22	0	52	36.5	57.7
Newborn affected by maternal complications of pregnancy	25	1	0	0	26	96.2	100.0
Sudden infant death syndrome	1	2	19	0	22	4.5	13.6
Accidents (unintentional injuries)	0	1	11	0	12	0.0	8.3
Newborn affected by complications of placenta, cord, and membranes	9	0	0	0	9	100.0	100.0
Bacterial sepsis of newborn	7	2	0	0	9	77.8	100.0
Respiratory distress of newborn	8	0	0	0	8	100.0	100.0
Septicemia	5	0	1	0	6	83.3	83.3
Diseases of the circulatory system	0	2	4	0	6	0.0	33.3
Diarrhea and gastroenteritis of infectious origin	5	0	0	0	5	100.0	100.0
Necrotizing enterocolitis of newborn	3	1	1	0	5	60.0	80.0
Neonatal hemorrhage	3	1	0	0	4	75.0	100.0
Assault (homicide)	0	2	2	0	4	0.0	50.0
Volume depletion, disorders of fluid, electrolyte and acid-base balance	2	0	1	0	3	66.7	66.7
Intrauterine hypoxia and birth asphyxia	2	0	1	0	3	66.7	66.7
Hematological disorders	2	0	1	0	3	66.7	66.7
Slow fetal growth and fetal malnutrition	2	0	0	0	2	100.0	100.0
Interstitial emphysema and related conditions originating in the perinatal period	1	0	1	0	2	50.0	50.0
Diseases of the blood and blood-forming organs and certain disorders involving the imr	1	0	0	0	1	100.0	100.0
All other causes	25	10	31	0	66	37.9	53.0
TOTAL	191	33	96	0	320	59.7	70.0

Notes:

1. Leading causes of infant death are categorized using NCHS rankable causes of infant death, specific ICD-10 codes are shown in Appendix D.
2. Very preterm is defined as less than 32 weeks of gestation.
3. Moderately preterm is defined as between 32 and 36 weeks of gestation.
4. Term is defined as 37 and greater weeks of gestation.
5. The percent born preterm includes both the very preterm and moderately preterm groups.

Source: Delaware Department of Health and Social Services, Division of Public Health, Delaware Health Statistics Center

TABLE E-9. FIVE-YEAR AVERAGE INFANT MORTALITY RATES BY RACE AND SELECTED RISK MARKERS, DELAWARE LIVE BIRTH COHORT, 2004-2020

Parameter/ Race	2004 -2008	2005 -2009	2006 -2010	2007 -2011	2008 -2012	2009 -2013	2010 -2014	2011 -2015	2012 -2016	2013 -2017	2014 -2018	2015 -2019	2016 -2020
BIRTHWEIGHT													
2500+													
All Races	2.0	1.9	2.2	2.2	2.2	2.2	2.2	2.2	2.1	2.0	2.0	1.9	1.8
Non-Hispanic White	1.6	1.6	2.0	2.3	2.4	2.5	2.4	2.2	2.0	1.8	1.9	2.0	1.8
Non-Hispanic Black	2.9	2.7	2.6	2.2	2.5	2.5	2.5	2.6	2.6	2.9	2.9	2.5	2.6
<2500													
All Races	69.2	70.6	65.5	67.1	68.2	64.6	61.7	64.6	62.2	58.2	57.7	54.2	48.0
Non-Hispanic White	59.8	55.5	54.5	52.3	51.1	46.9	47.1	49.4	48.1	44.2	43.6	37.5	29.2
Non-Hispanic Black	84.2	90.1	82.1	86.5	88.9	83.3	76.3	79.6	74.7	71.0	69.0	66.7	60.4
<1500													
All Races	286.8	279.3	260.8	264.7	267.6	258.6	253.1	267.7	263.8	247.2	246.5	234.7	212.3
Non-Hispanic White	268.1	240.6	228.6	222.5	215.2	203.9	209.0	228.3	221.4	218.0	229.6	201.3	171.6
Non-Hispanic Black	290.9	298.0	283.3	295.2	308.6	296.5	277.2	289.4	290.9	268.1	257.8	254.3	226.2
GESTATION													
37+ weeks													
All Races	2.0	2.0	2.4	2.6	2.6	2.5	2.6	2.5	2.2	2.2	2.3	2.1	2.1
Non-Hispanic White	1.8	1.7	2.3	2.7	2.7	2.7	2.8	2.3	2.0	1.7	1.8	1.8	1.8
Non-Hispanic Black	2.8	2.6	2.7	2.6	2.7	2.7	2.9	3.1	3.0	3.4	3.6	3.2	3.4
<37 weeks													
All Races	47.0	47.3	43.6	44.3	45.5	44.0	41.5	44.8	43.3	40.4	39.9	38.3	33.1
Non-Hispanic White	36.8	35.0	34.2	33.0	32.3	31.2	28.9	32.8	33.0	30.4	30.1	27.5	20.3
Non-Hispanic Black	68.5	71.5	64.4	66.8	69.6	65.6	60.1	63.0	58.5	55.6	54.2	52.8	47.1
<32 weeks													
All Races	220.4	216.9	195.0	195.7	198.7	190.8	178.9	189.6	186.9	177.0	174.0	172.1	156.8
Non-Hispanic White	191.1	178.3	160.1	154.9	146.2	137.7	130.1	144.2	144.6	141.8	144.0	133.3	115.3
Non-Hispanic Black	254.0	258.1	236.5	241.2	249.6	235.5	216.0	226.1	225.0	212.5	205.3	205.6	182.9
PLURALITY													
Single													
All Races	7.0	7.0	7.0	7.0	6.9	6.7	6.3	6.4	6.1	5.9	6.0	5.9	5.3
Non-Hispanic White	5.1	4.7	5.3	5.4	5.2	5.1	4.8	4.6	4.4	4.0	4.1	4.0	3.4
Non-Hispanic Black	12.2	12.6	11.8	11.7	11.8	11.5	10.6	10.9	10.4	10.6	10.4	10.0	9.5
Plural													
All Races	40.3	41.0	32.6	34.2	35.0	34.5	36.1	42.6	43.4	37.7	38.0	33.3	28.1
Non-Hispanic White	26.5	26.2	21.0	20.8	22.0	22.2	27.0	33.3	35.2	31.0	29.1	23.3	14.3
Non-Hispanic Black	68.6	70.4	54.9	54.9	56.6	46.6	40.5	47.5	50.4	43.0	50.5	49.1	42.2
SMOKING DURING PREGNANCY													
No													
All Races	7.4	7.6	7.4	7.4	7.4	7.2	6.7	6.9	6.6	6.4	6.4	6.2	5.5
Non-Hispanic White	5.1	4.9	5.5	5.4	5.5	5.3	4.9	4.7	4.5	4.0	4.0	4.0	3.4
Non-Hispanic Black	13.2	13.8	12.8	13.0	13.3	12.5	11.6	12.0	11.2	11.1	11.0	10.4	9.7
Yes													
All Races	13.3	12.1	10.7	10.8	10.0	9.7	10.7	11.5	12.1	11.9	13.4	12.3	11.8
Non-Hispanic White	10.8	8.7	8.2	8.5	7.3	6.9	8.8	10.0	10.4	10.0	10.7	8.6	6.8
Non-Hispanic Black	21.6	21.9	17.8	16.1	16.2	16.0	14.4	15.0	17.6	18.3	20.0	22.0	22.6

TABLE E-9. FIVE-YEAR AVERAGE INFANT MORTALITY RATES BY RACE AND SELECTED RISK MARKERS, DELAWARE LIVE BIRTH COHORT, 2003-2020 (continued)

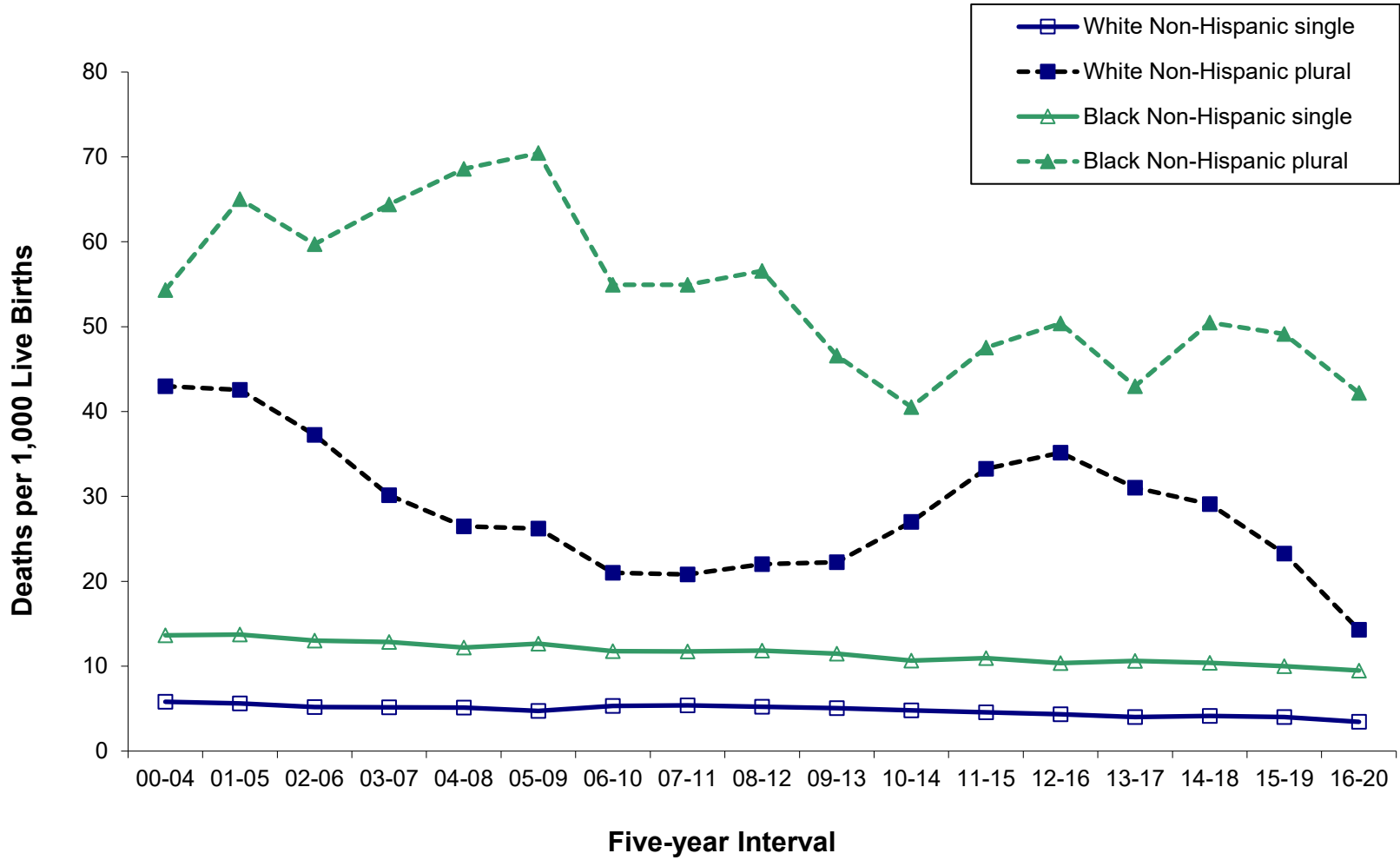
Parameter/ Race	2003 -2007	2004 -2008	2005 -2009	2006 -2010	2007 -2011	2008 -2012	2009 -2013	2010 -2014	2011 -2015	2012 -2016	2013 -2017	2014 -2018	2015 -2019	2016 -2020
EDUCATION														
HS Grad or less														
All Races	10.8	10.1	10.0	10.0	10.0	9.5	9.5	8.8	9.3	8.9	9.2	9.3	9.4	8.1
Non-Hispanic White	8.8	8.5	8.1	8.6	8.3	7.8	7.7	7.2	7.8	7.5	7.3	7.3	7.4	5.8
Non-Hispanic Black	16.4	15.3	15.4	14.8	15.0	15.3	15.1	13.7	14.2	13.3	13.9	13.6	14.2	12.9
1+ yrs college														
All Races	5.4	5.6	5.9	5.6	5.8	6.2	5.7	5.7	5.9	5.7	5.1	5.2	4.6	4.1
Non-Hispanic White	4.0	4.0	3.8	4.1	4.5	4.7	4.4	4.5	4.3	4.1	3.6	3.7	3.3	2.7
Non-Hispanic Black	11.1	11.5	13.1	11.2	10.8	11.0	9.7	9.2	9.6	9.5	9.1	9.4	8.0	7.8
PAYMENT FOR DELIVERY														
Medicaid														
All Races	10.4	10.2	9.9	9.5	9.3	8.8	8.5	8.2	8.7	8.7	8.2	8.5	8.1	7.1
Non-Hispanic White	8.9	9.2	8.2	8.4	7.3	7.1	6.7	6.8	7.1	7.6	6.8	7.1	6.5	5.0
Non-Hispanic Black	14.5	14.1	14.0	12.9	13.5	13.5	13.0	12.2	12.6	11.8	11.2	11.3	11.0	10.3
Private Insurance														
All Races	6.7	6.4	6.6	6.4	6.4	6.6	6.4	6.2	6.2	5.9	5.8	5.6	5.4	4.9
Non-Hispanic White	4.7	4.5	4.3	4.6	5.1	4.9	4.9	4.6	4.5	4.0	3.8	3.7	3.5	3.1
Non-Hispanic Black	15.5	14.9	16.3	14.8	13.4	13.9	12.6	11.3	12.2	12.0	13.0	12.6	11.6	10.7

Notes:

1. See the Basic Definitions' section for definitions of birthweight, gestation, prenatal care attainment, and plurality.
2. "----" indicates rate does not meet standards of reliability or precision; based on fewer than 20 deaths in the numerator.
3. Primary source of payment for delivery not available prior to 1991.

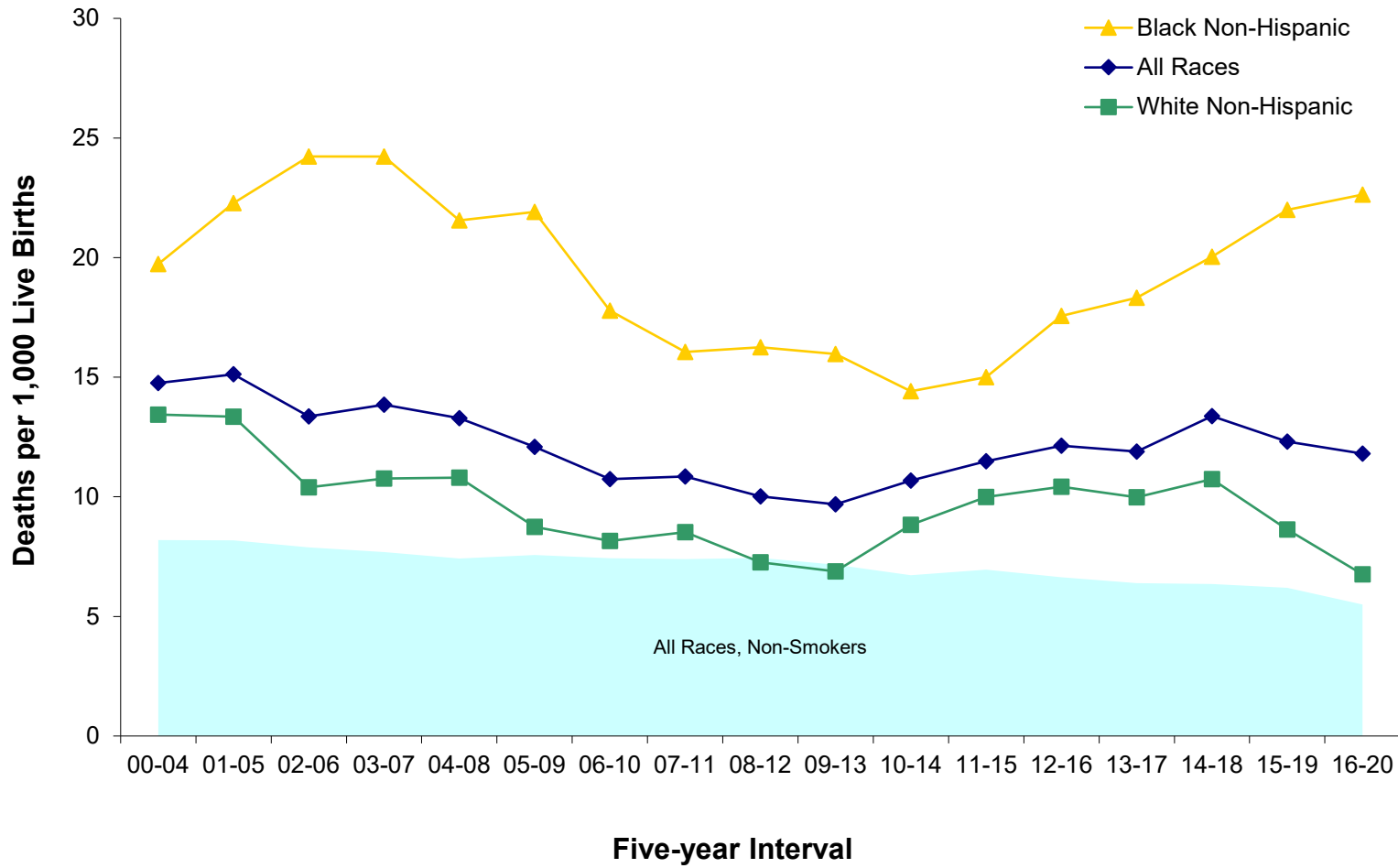
Source: Delaware Department of Health and Social Services, Division of Public Health, Delaware Health Statistics Center

Figure E-5. Five-year Average Infant Mortality Rates by Race and Plurality, Delaware, 2000-2020 Live Birth Cohort



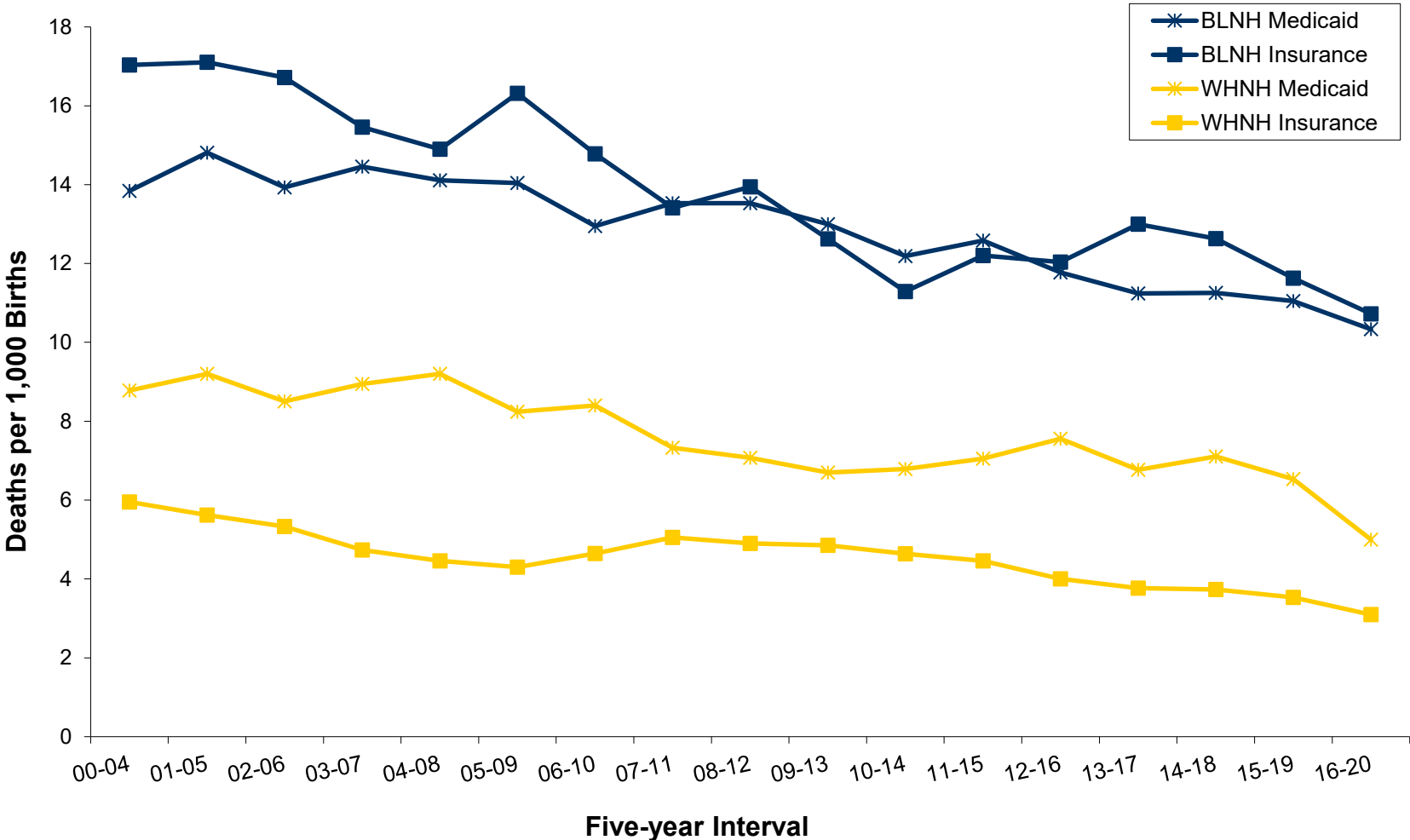
Source: Delaware Department of Health and Social Services, Division of Public Health, Delaware Health Statistics Center

Figure E-6. Five-year Average Infant Mortality Rates by Race of Mothers who Smoked during Pregnancy versus all Non-smoking Mothers, Delaware, 2000-2020 Live Birth Cohort



Source: Delaware Department of Health and Social Services, Division of Public Health, Delaware Health Statistics Center

Figure E-7. Five-year Average Infant Mortality Rates by Race and Source of Payment for Delivery, Delaware, 2000-2020 Live Birth Cohort



Source: Delaware Department of Health and Social Services, Division of Public Health, Delaware Health Statistics Center

TABLE E-10. NUMBER OF INFANT DEATHS BY PLURALITY, BIRTH WEIGHT IN GRAMS, RACE OF MOTHER, AND SEX OF CHILD, DELAWARE, 2016-2020, LIVE BIRTH COHORT

Plurality/ Birth Weight	Race and Sex											
	All Races			Non-Hispanic White			Non-Hispanic Black			Non-Hispanic Other/Unknown		
	Both Sexes	Male	Female	Both Sexes	Male	Female	Both Sexes	Male	Female	Both Sexes	Male	Female
All Births	320	160	160	98	46	52	155	77	78	19	11	8
<2500	231	114	117	54	25	29	120	59	61	17	10	7
<1500	190	97	93	46	22	24	102	49	53	13	9	4
<500	93	47	46	17	6	11	55	27	28	9	6	3
500-999	84	46	38	26	15	11	39	20	19	3	2	1
1000-1499	13	4	9	3	1	2	8	2	6	1	1	0
1500-1999	18	5	13	2	0	2	7	3	4	2	0	2
2000-2499	23	12	11	6	3	3	11	7	4	2	1	1
2500+	87	45	42	44	21	23	33	17	16	2	1	1
2500-2999	32	18	14	13	6	7	12	7	5	2	1	1
3000-3499	32	14	18	15	5	10	14	7	7	0	0	0
3500-3999	14	7	7	9	5	4	5	2	3	0	0	0
4000-4499	8	6	2	7	5	2	1	1	0	0	0	0
4500+	1	0	1	0	0	0	1	0	1	0	0	0
Unknown	2	1	1	0	0	0	2	1	1	0	0	0
Single Births	273	138	135	87	39	48	132	68	64	18	11	7
<2500	189	94	95	43	18	25	100	51	49	17	10	7
<1500	152	78	74	35	15	20	83	42	41	13	9	4
<500	79	38	41	15	4	11	47	23	24	9	6	3
500-999	63	36	27	17	10	7	31	17	14	3	2	1
1000-1499	10	4	6	3	1	2	5	2	3	1	1	0
1500-1999	15	5	10	2	0	2	7	3	4	2	0	2
2000-2499	22	11	11	6	3	3	10	6	4	2	1	1
2500+	83	44	39	44	21	23	31	17	14	1	1	0
2500-2999	28	17	11	13	6	7	10	7	3	1	1	0
3000-3499	32	14	18	15	5	10	14	7	7	0	0	0
3500-3999	14	7	7	9	5	4	5	2	3	0	0	0
4000-4499	8	6	2	7	5	2	1	1	0	0	0	0
4500+	1	0	1	0	0	0	1	0	1	0	0	0
Unknown	1	0	1	0	0	0	1	0	1	0	0	0
Plural Births	47	22	25	11	7	4	23	9	14	1	0	1
<2500	42	20	22	11	7	4	20	8	12	0	0	0
<1500	38	19	19	11	7	4	19	7	12	0	0	0
<500	14	9	5	2	2	0	8	4	4	0	0	0
500-999	21	10	11	9	5	4	8	3	5	0	0	0
1000-1499	3	0	3	0	0	0	3	0	3	0	0	0
1500-1999	3	0	3	0	0	0	0	0	0	0	0	0
2000-2499	1	1	0	0	0	0	1	1	0	0	0	0
2500+	5	2	3	0	0	0	2	0	2	1	0	1
2500-2999	4	1	3	0	0	0	2	0	2	1	0	1
3000-3499	0	0	0	0	0	0	0	0	0	0	0	0
3500-3999	0	0	0	0	0	0	0	0	0	0	0	0
4000-4499	0	0	0	0	0	0	0	0	0	0	0	0
4500+	0	0	0	0	0	0	0	0	0	0	0	0
Unknown	1	1	0	0	0	0	1	1	0	0	0	0

Note:
Infant deaths refer to deaths of children under one year of age.

Source: Delaware Department of Health and Social Services, Division of Public Health, Delaware Health Statistics Center

TABLE E-11. NUMBER OF NEONATAL DEATHS BY PLURALITY, BIRTH WEIGHT IN GRAMS, RACE OF MOTHER, AND SEX OF CHILD, DELAWARE, 2016-2020 LIVE BIRTH COHORT

Plurality/ Birth Weight	Race and Sex											
	All Races			Non-Hispanic White			Non-Hispanic Black			Non-Hispanic Other		
	Both Sexes	Male	Female	Both Sexes	Male	Female	Both Sexes	Male	Female	Both Sexes	Male	Female
All Births	215	116	99	62	31	31	101	53	48	15	11	4
<2500	189	99	90	49	24	25	92	47	45	14	10	4
<1500	166	89	77	43	21	22	83	42	41	13	9	4
<500	93	47	46	17	6	11	55	27	28	9	6	3
500-999	64	40	24	23	14	9	23	15	8	3	2	1
1000-1499	9	2	7	3	1	2	5	0	5	1	1	0
1500-1999	9	2	7	0	0	0	5	2	3	0	0	0
2000-2499	14	8	6	6	3	3	4	3	1	1	1	0
2500+	21	13	8	13	7	6	7	5	2	1	1	0
2500-2999	8	6	2	5	3	2	1	1	0	1	1	0
3000-3499	12	6	6	5	1	4	5	3	2	0	0	0
3500-3999	3	3	0	2	2	0	1	1	0	0	0	0
4000-4499	1	1	0	1	1	0	0	0	0	0	0	0
4500+	0	0	0	0	0	0	0	0	0	0	0	0
Unknown	2	1	1	0	0	0	2	1	1	0	0	0
Single Births	179	97	82	52	24	28	86	46	40	15	11	4
<2500	154	81	73	39	17	22	78	41	37	14	10	4
<1500	134	71	63	33	14	19	69	36	33	13	9	4
<500	79	38	41	15	4	11	47	23	24	9	6	3
500-999	48	31	17	15	9	6	19	13	6	3	2	1
1000-1499	7	2	5	3	1	2	3	0	3	1	1	0
1500-1999	6	2	4	0	0	0	5	2	3	0	0	0
2000-2499	14	8	6	6	3	3	4	3	1	1	1	0
2500+	24	16	8	13	7	6	7	5	2	1	1	0
2500-2999	8	6	2	5	3	2	1	1	0	1	1	0
3000-3499	12	6	6	5	1	4	5	3	2	0	0	0
3500-3999	3	3	0	2	2	0	1	1	0	0	0	0
4000-4499	1	1	0	1	1	0	0	0	0	0	0	0
4500+	0	0	0	0	0	0	0	0	0	0	0	0
Unknown	1	0	1	0	0	0	1	0	1	0	0	0
Plural Births	36	19	17	10	7	3	15	7	8	0	0	0
<2500	35	18	17	10	7	3	14	6	8	0	0	0
<1500	32	18	14	10	7	3	14	6	8	0	0	0
<500	14	9	5	2	2	0	8	4	4	0	0	0
500-999	16	9	7	8	5	3	4	2	2	0	0	0
1000-1499	2	0	2	0	0	0	2	0	2	0	0	0
1500-1999	3	0	3	0	0	0	0	0	0	0	0	0
2000-2499	0	0	0	0	0	0	0	0	0	0	0	0
2500+	0	0	0	0	0	0	0	0	0	0	0	0
2500-2999	0	0	0	0	0	0	0	0	0	0	0	0
3000-3499	0	0	0	0	0	0	0	0	0	0	0	0
3500-3999	0	0	0	0	0	0	0	0	0	0	0	0
4000-4499	0	0	0	0	0	0	0	0	0	0	0	0
4500+	0	0	0	0	0	0	0	0	0	0	0	0
Unknown	1	1	0	0	0	0	1	1	0	0	0	0

Note:

Neonatal deaths refer to deaths of children under 28 days of age.

Source: Delaware Department of Health and Social Services, Division of Public Health, Delaware Health Statistics Center