

The background of the cover is a photograph of a large, multi-story stone fortification tower. The tower is built from light-colored, rectangular stone blocks and has several dark, rectangular windows. It is situated on a grassy bank next to a body of water. In the distance, a flat landscape with some buildings and trees is visible under a blue sky with scattered white clouds.

# Delaware Vital Statistics Annual Report Population, 2013

*Suggested Citation:*

*Delaware Health Statistics Center. Delaware Vital Statistics Annual Report, 2016.  
Delaware Department of Health and Social Services, Division of Public Health: 2016.*

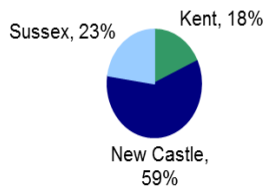
## POPULATION

Delaware's three counties continued their increasing population trend, though they grew at different rates. Between 2000 and 2013, county populations grew annually by 2.3 percent for Kent, 0.6 percent for New Castle, and 2.3 percent for Sussex. Delaware's statewide increase was 1.2 percent.

In 2013, more than half of Delaware's 65 and older population resided in New Castle County. However, residents 65 and older represented a much larger proportion of the Sussex County population, where one in four residents was 65 or older, versus New Castle and Kent counties, where approximately one in seven residents was 65 or older.

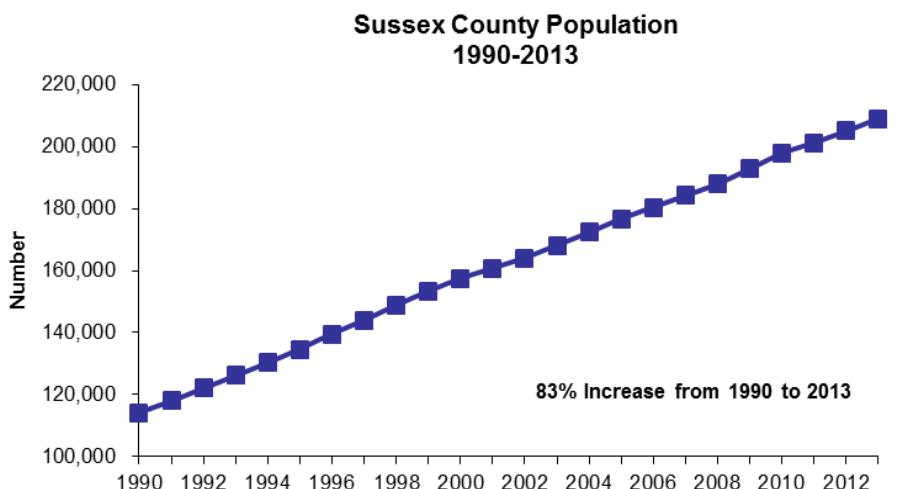
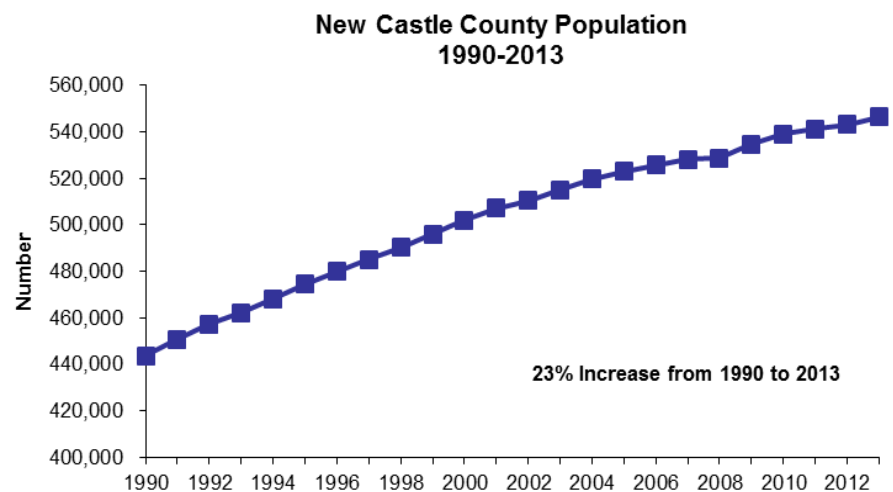
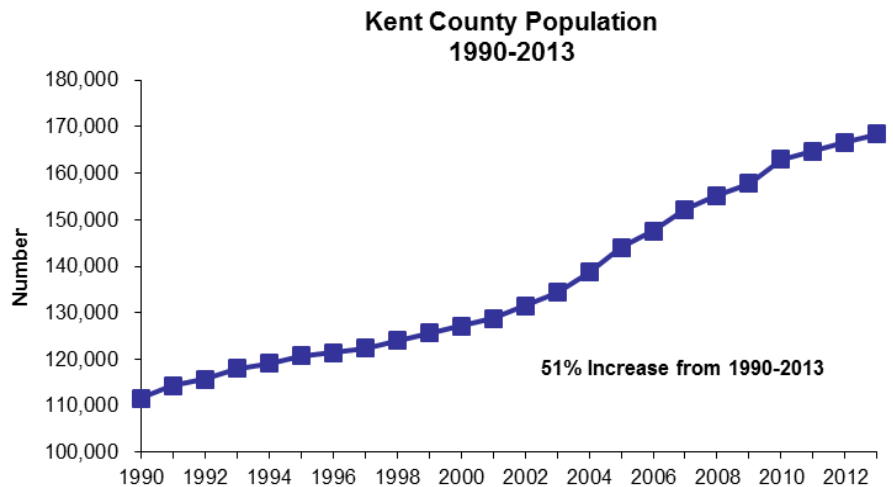
Over half of Delaware's total population resides in New Castle County.

Percent of Population by County  
Delaware, 2013



Source: Delaware Health Statistics Center

Delaware Resident Population by County, 1990-2013

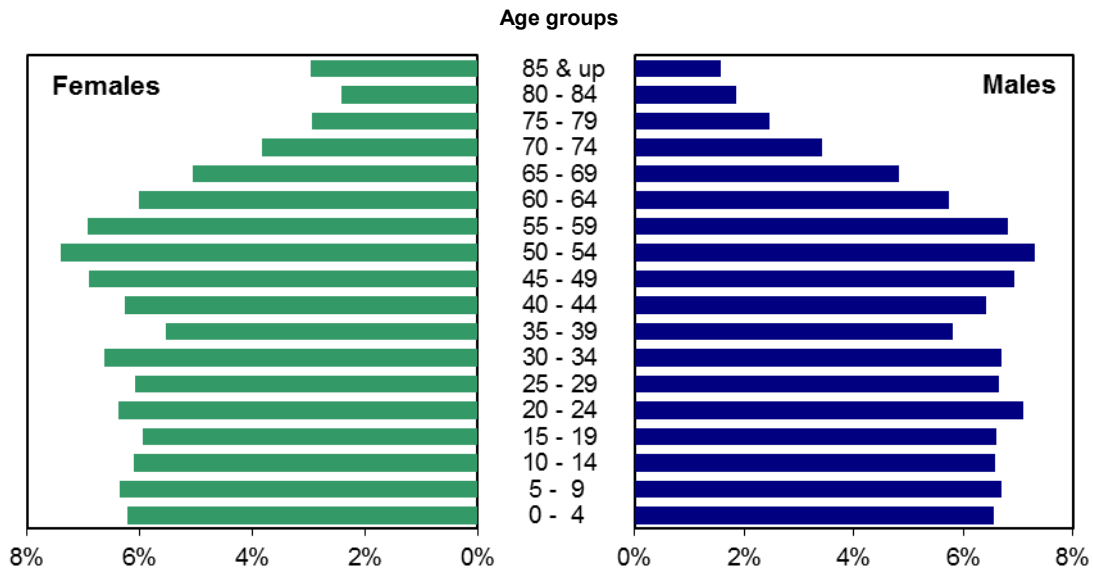


Source: Delaware Health Statistics Center

## POPULATION

In 2013, just over 51 percent of Delaware's population was female. Females made up a greater proportion of the older age groups, which reflects the longer female life expectancy. Delaware females born in 2013 could expect to live an average of 81.5 years, versus males, who could expect to live 76.2 years.

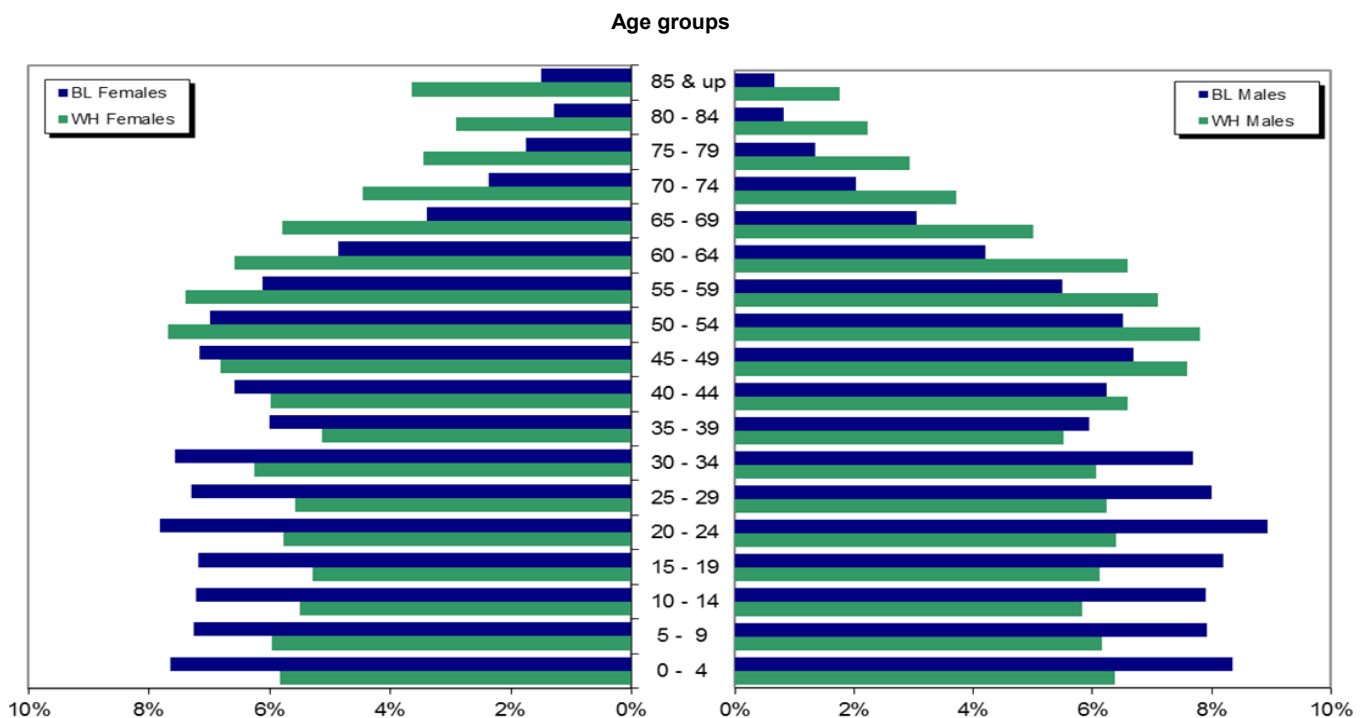
### Population by Age and Sex, Delaware, 2013



Source: Delaware Health Statistics Center

When the population was broken down by race, the higher proportion of females in the older age groups appeared in the black population as well. However, both black males and females had a greater percentage of their population in the 0-44 year age range than whites; in the 45 and above age range, whites made up a greater proportion of the population.

### Population by Age, Sex, and Race, Delaware, 2013



Source: Delaware Health Statistics Center

TABLE A-1  
PERCENT CHANGE IN POPULATION BY SEX

DELAWARE, COUNTIES, CITY OF DOVER, CITY OF NEWARK, AND CITY OF WILMINGTON, 1970-2020

Area/ Sex	1970	1980	% Change 1970-1980	1990	% Change 1980-1990	2000	% Change 1990-2000	2010	% Change 2000-2010	2020*	% Change 2010-2020	% Change 2000-2020
<b>Delaware</b>	548104	594338	8.4	666168	12.1	786393	18.0	899773	14.4	989170	9.9	25.8
Male	267332	286599	7.2	322966	12.7	381690	18.2	437346	14.6	481410	10.1	26.1
Female	280772	307739	9.6	343202	11.5	404703	17.9	462427	14.3	507760	9.8	25.5
<b>Kent</b>	81892	98219	19.9	110993	13.0	127230	14.6	162916	28.0	180357	10.7	41.8
Male	41337	48254	16.7	54300	12.5	61325	12.9	78394	27.8	86714	10.6	41.4
Female	40555	49965	23.2	56693	13.5	65905	16.2	84522	28.2	93643	10.8	42.1
Dover	17488	23512	34.4	27630	17.5	32135	16.3	36063	12.2	40475	12.2	26.0
Male	8319	11695	40.6	13408	14.6	15114	12.7	16798	11.1	18606	10.8	23.1
Female	9169	11817	28.9	14222	20.4	17021	19.7	19266	13.2	21869	13.5	28.5
<b>New Castle</b>	385856	398115	3.2	441946	11.0	501846	13.6	538987	7.4	573239	6.4	14.2
Male	187124	191176	2.2	213869	11.9	243587	13.9	262091	7.6	278844	6.4	14.5
Female	198732	206939	4.1	228077	10.2	258259	13.2	276896	7.2	294395	6.3	14.0
Newark	20757	25247	21.6	26463	4.8	28457	7.5	31465	10.6	34790	10.6	22.3
Male	10242	11993	17.1	12408	3.5	13085	5.5	14695	12.3	16251	10.6	24.2
Female	10515	13254	26.0	14055	6.0	15372	9.4	16770	9.1	18539	10.5	20.6
Wilmington	80386	70195	-12.7	71529	1.9	72730	1.7	70839	-2.6	69634	-1.7	-4.3
Male	36968	31458	-14.9	33249	5.7	34759	4.5	34568	-0.5	34461	-0.3	-0.9
Female	43418	38737	-10.8	38280	-1.2	37971	-0.8	36271	-4.5	35173	-3.0	-7.4
<b>Sussex</b>	80356	98004	22.0	113229	15.5	157317	38.9	197870	25.8	235574	19.1	49.7
Male	38871	47169	21.3	54797	16.2	76778	40.1	96861	26.2	115852	19.6	50.9
Female	41485	50835	22.5	58432	14.9	80539	37.8	101009	25.4	119722	18.5	48.7

**Note:**

\*Numbers for this year are projections.

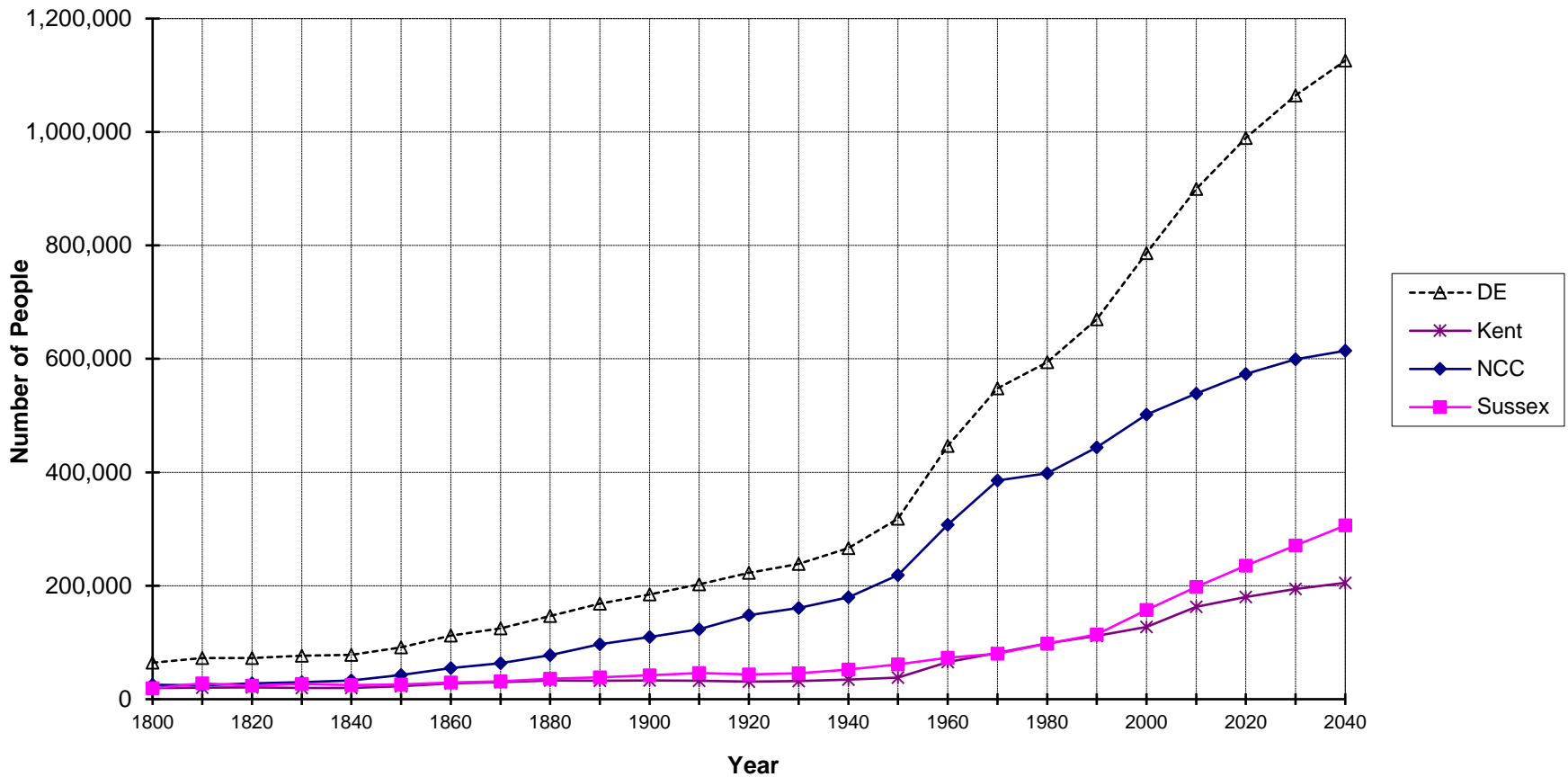
**Sources:**

Delaware Health Statistics Center  
Delaware Population Consortium  
U.S. Bureau of the Census

POPSEX

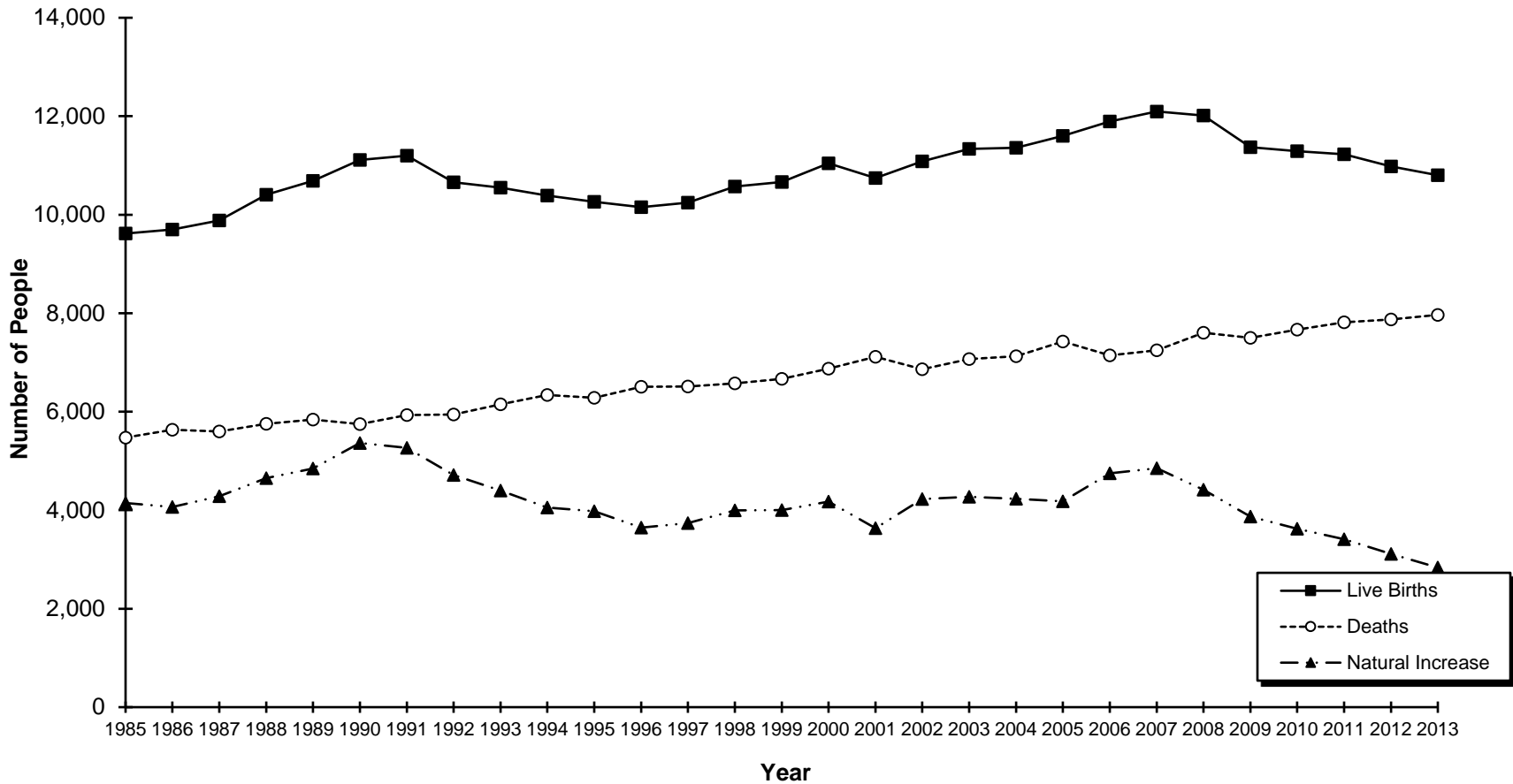
**Figure A-1  
Population Growth**

**Delaware and Counties, 1800-2040**



**Sources:**  
Delaware Health Statistics Center  
Delaware Population Consortium

**Figure A-2**  
**Live Births, Deaths, and Natural Increase**  
**Delaware, 1985-2013**



Source:  
 Delaware Health Statistics Center

TABLE A-2  
POPULATION ESTIMATES BY SEX, RACE AND AGE

DELAWARE, COUNTIES, CITY OF DOVER, CITY OF NEWARK, AND CITY OF WILMINGTON, 2013

Area/ Sex/Race	Age																		
	Total	0-4	5-9	10-14	15-19	20-24	25-29	30-34	35-39	40-44	45-49	50-54	55-59	60-64	65-69	70-74	75-79	80-84	85+
<b>Delaware</b>	923736	58999	60206	58494	57833	62098	58725	61567	52388	58532	63923	67873	63473	54326	45712	33554	25018	19828	21187
Male	449200	29455	30075	29546	29627	31808	29871	30073	26116	28786	31157	32770	30616	25797	21689	15406	11015	8329	7064
White	319049	19602	20012	18899	18562	20254	19682	19779	17175	19731	22369	24614	23922	20720	17980	12921	9282	7301	6244
Black	97763	8173	7745	7718	8012	8738	7824	7521	5803	6095	6548	6365	5381	4117	2973	1984	1325	800	641
Female	474536	29544	30131	28948	28206	30290	28854	31494	26272	29746	32766	35103	32857	28529	24023	18148	14003	11499	14123
White	336443	19636	20045	18516	17776	19429	18762	21013	17247	20119	22898	25850	24875	22147	19482	14982	11606	9801	12259
Black	107621	8238	7814	7776	7728	8407	7861	8154	6464	7079	7700	7512	6586	5232	3651	2538	1888	1382	1611
<b>Kent</b>	168391	11552	11375	11410	11402	12210	12030	12082	9770	10354	11600	12454	10936	8618	7307	5282	4206	3084	2719
Male	81022	5768	5676	5711	5811	6253	5985	5906	4690	4909	5560	5958	5139	4001	3439	2366	1784	1247	819
White	56314	3950	3848	3822	3765	4083	4008	3555	3131	3434	4048	4375	3835	2999	2656	1827	1365	980	633
Black	19864	1634	1569	1557	1609	1800	1645	1955	1143	1085	1127	1176	1029	808	612	450	314	206	145
Female	87369	5784	5699	5699	5591	5957	6045	6176	5080	5445	6040	6496	5797	4617	3868	2916	2422	1837	1900
White	59702	3951	3850	3790	3582	3944	4063	3512	3172	3726	4214	4617	4101	3313	2902	2220	1825	1416	1504
Black	22106	1649	1587	1586	1584	1641	1628	2308	1484	1275	1348	1455	1300	1000	739	510	419	282	311
<b>New Castle</b>	546396	34876	36515	35667	35802	38608	35046	39181	33260	37236	39416	40048	36401	30251	24316	16999	12116	9581	11077
Male	265769	17397	18219	17991	18408	19719	17950	18870	16705	18322	19280	19384	17633	14195	11386	7735	5223	3832	3520
White	179036	10688	11562	11053	11046	11993	11263	12447	10637	12045	13171	13922	13088	10765	8879	6091	4141	3224	3021
Black	65144	5399	5100	5143	5332	5813	5047	4610	3993	4285	4591	4337	3681	2802	2027	1298	832	470	384
Female	280627	17479	18296	17676	18889	18889	17096	20311	16555	18914	20136	20664	18768	16056	12930	9264	6893	5749	7557
White	188605	10730	11618	10833	10515	11518	10402	13811	10575	12052	13271	14470	13420	11769	9851	7245	5395	4741	6389
Black	71795	5447	5145	5177	5138	5663	5140	4888	4262	5091	5440	5083	4493	3568	2483	1663	1221	862	1031
Wilmington*	70479	5636	5098	4553	4345	5510	5638	5382	4894	4823	4524	4448	4170	3495	2661	1855	1310	1006	1131
Male	34576	2878	2617	2347	2280	2809	2805	2831	2509	2464	2313	2206	2001	1597	1123	724	482	318	272
White	12300	805	760	636	482	775	1132	1114	1091	1022	805	777	786	670	534	335	226	174	176
Black	19382	1811	1641	1508	1546	1725	1386	1409	1167	1225	1363	1296	1126	834	530	356	235	132	92
Female	35903	2758	2481	2206	2065	2701	2833	2551	2385	2359	2211	2242	2169	1898	1538	1131	828	688	859
White	12025	758	688	526	406	672	994	860	961	825	613	675	764	767	708	526	366	372	544
Black	21233	1750	1588	1506	1475	1742	1555	1444	1225	1366	1445	1445	1300	1045	755	564	425	302	301
<b>Sussex</b>	208949	12571	12316	11417	10629	11280	11649	10304	9358	10942	12907	15371	16136	15457	14089	11273	8696	7163	7391
Male	102409	6290	6180	5844	5408	5836	5936	5297	4721	5555	6317	7428	7844	7601	6864	5305	4008	3250	2725
White	83699	4964	4602	4024	3751	4178	4411	3777	3407	4252	5150	6317	6999	6956	6445	5003	3776	3097	2590
Black	12755	1140	1076	1018	1071	1125	1132	956	667	725	830	852	671	507	334	236	179	124	112
Female	106540	6281	6136	5573	5221	5444	5713	5007	4637	5387	6590	7943	8292	7856	7225	5968	4688	3913	4666
White	88136	4955	4577	3893	3679	3967	4297	3690	3500	4341	5413	6763	7354	7065	6729	5517	4386	3644	4366
Black	13720	1142	1082	1013	1006	1103	1093	958	718	713	912	974	793	664	429	365	248	238	269

Sources:  
Delaware Health Statistics Center  
Delaware Population Consortium

POPSRA