

# 2022 Delaware Healthcare Workforce Census

Timothy E. Gibbs, MPH

Executive Director

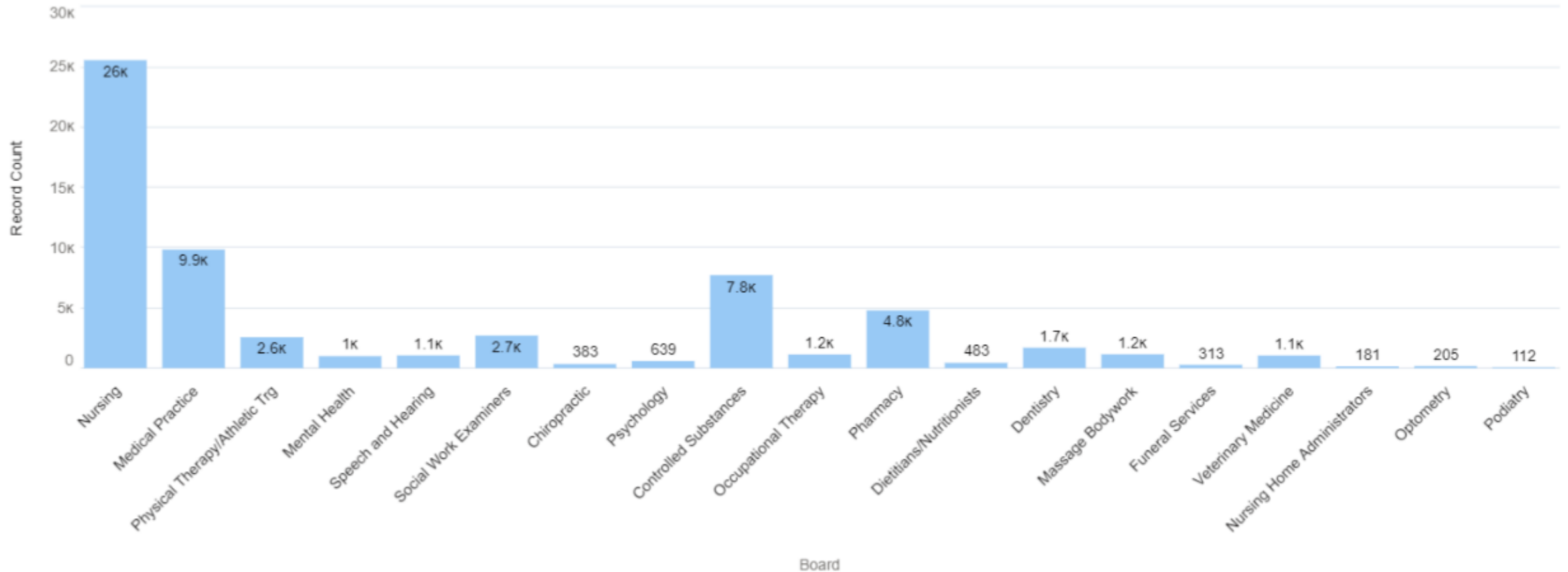


DELAWARE  
ACADEMY *of*  
MEDICINE

DPHA  
DELAWARE PUBLIC HEALTH ASSOCIATION

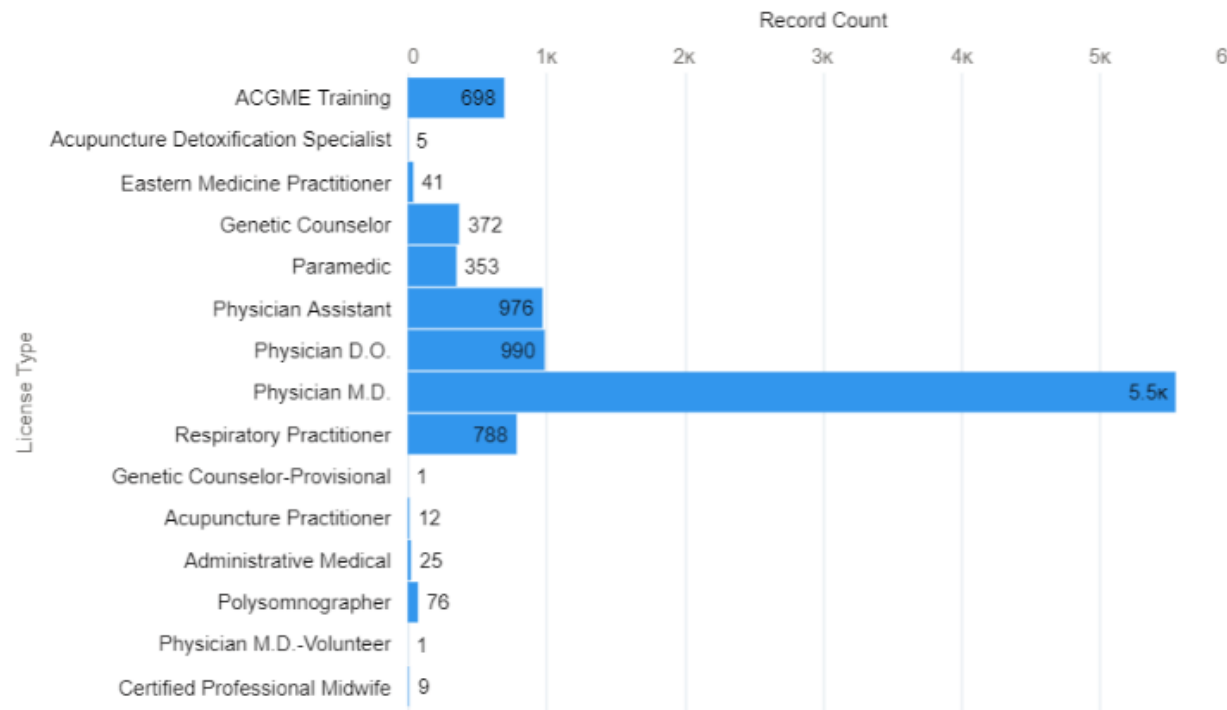
# Delaware Healthcare Workforce – June 2022

## High Level View

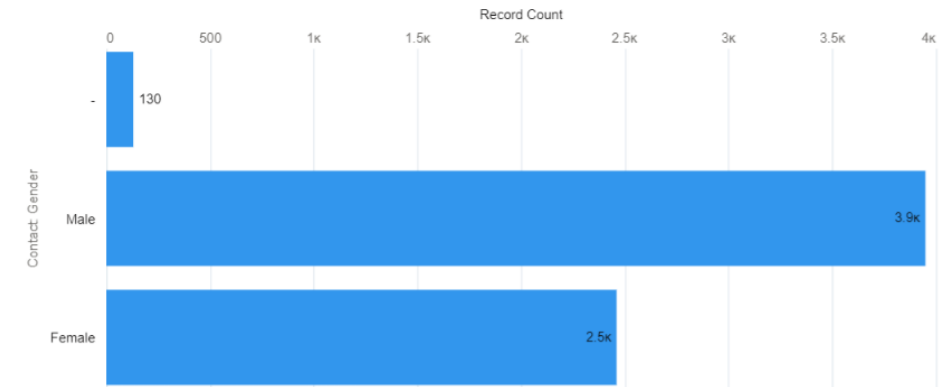


# Board of Medical Practice – High Level View

Medical Practice - Active licenses



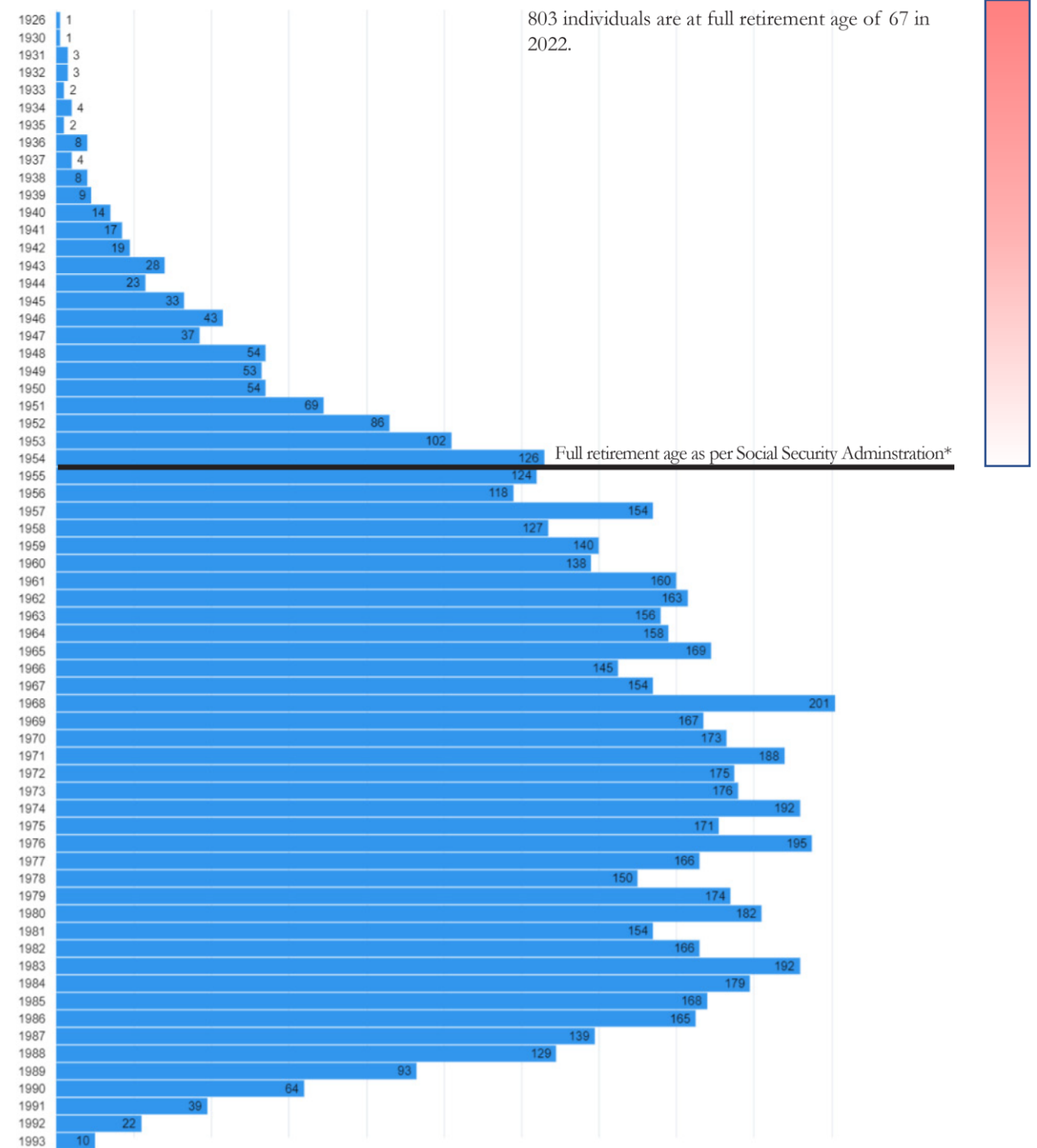
Medical Board by G



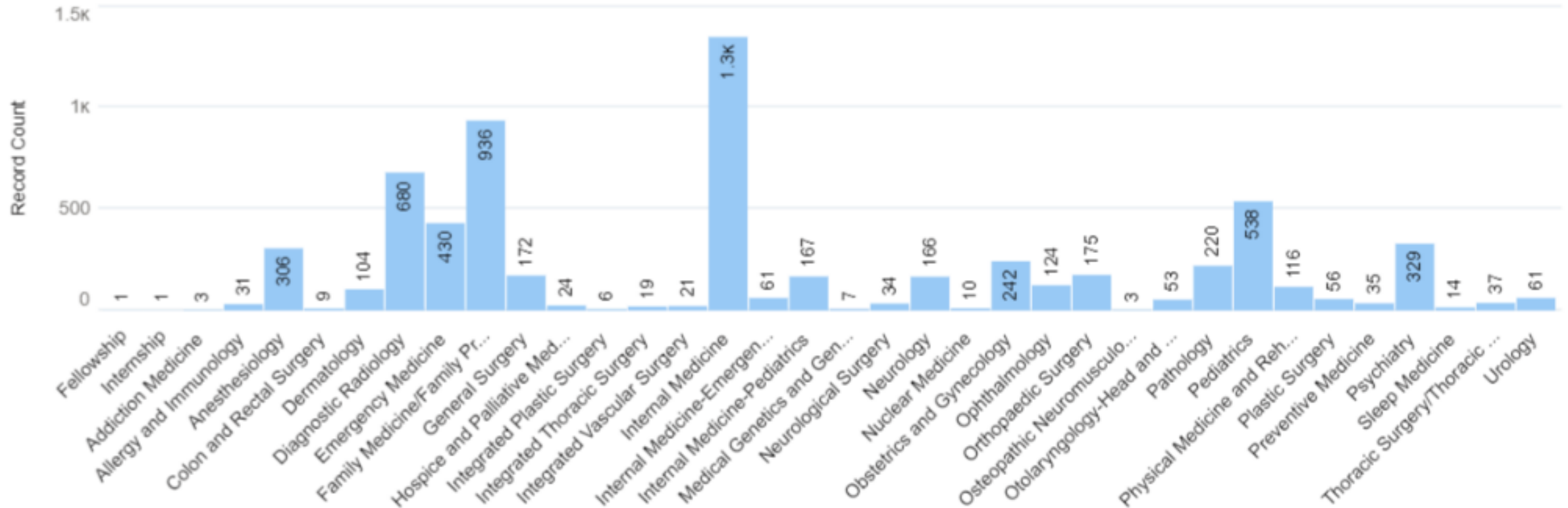
# Physician License by Birth Year

803 active license physicians were at full retirement age in 2022.

Now, in 2023, another 124 physicians will become retirement eligible as per the Social Security Administration



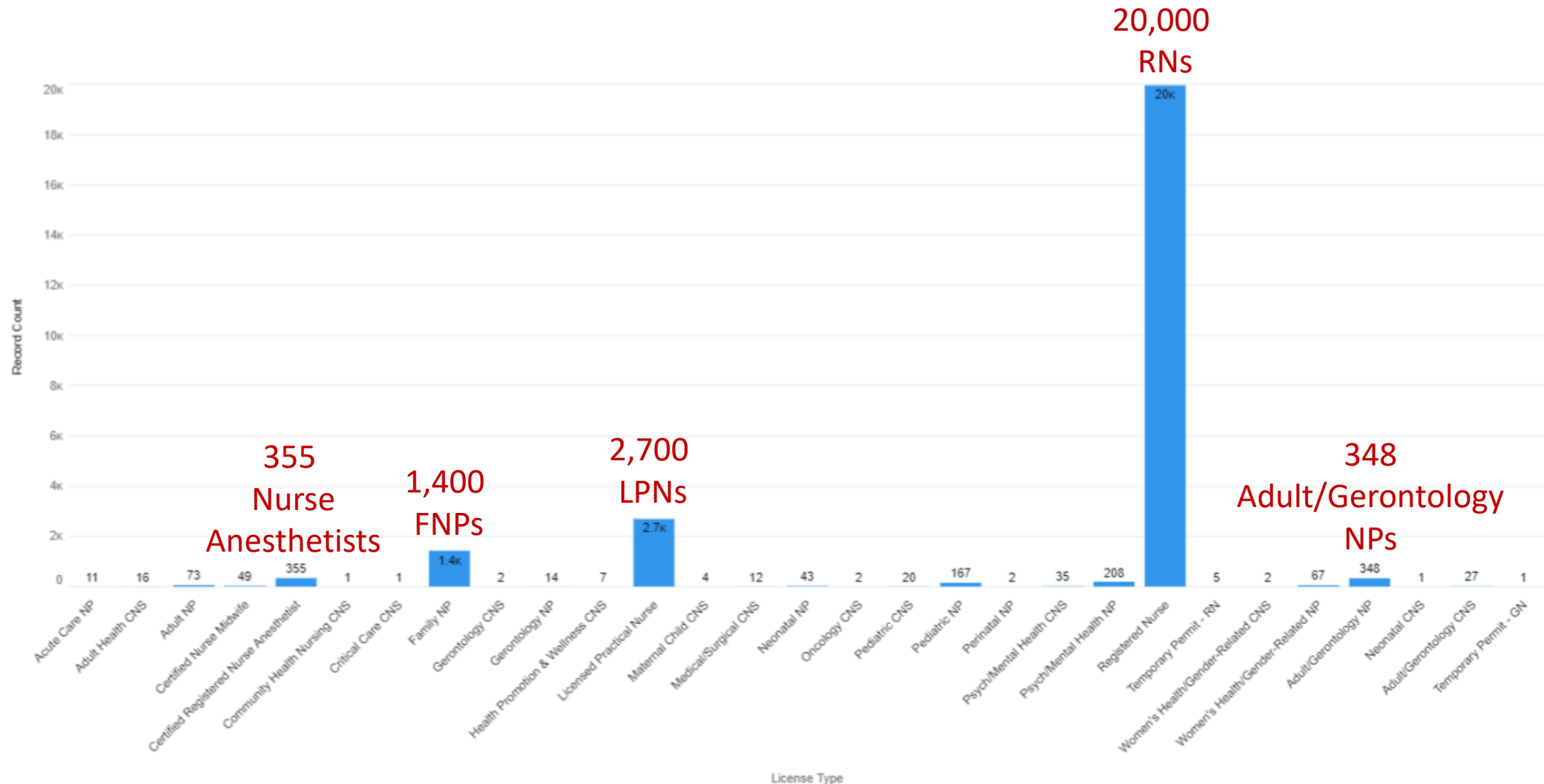
# Physicians grouped by AAMC specialty



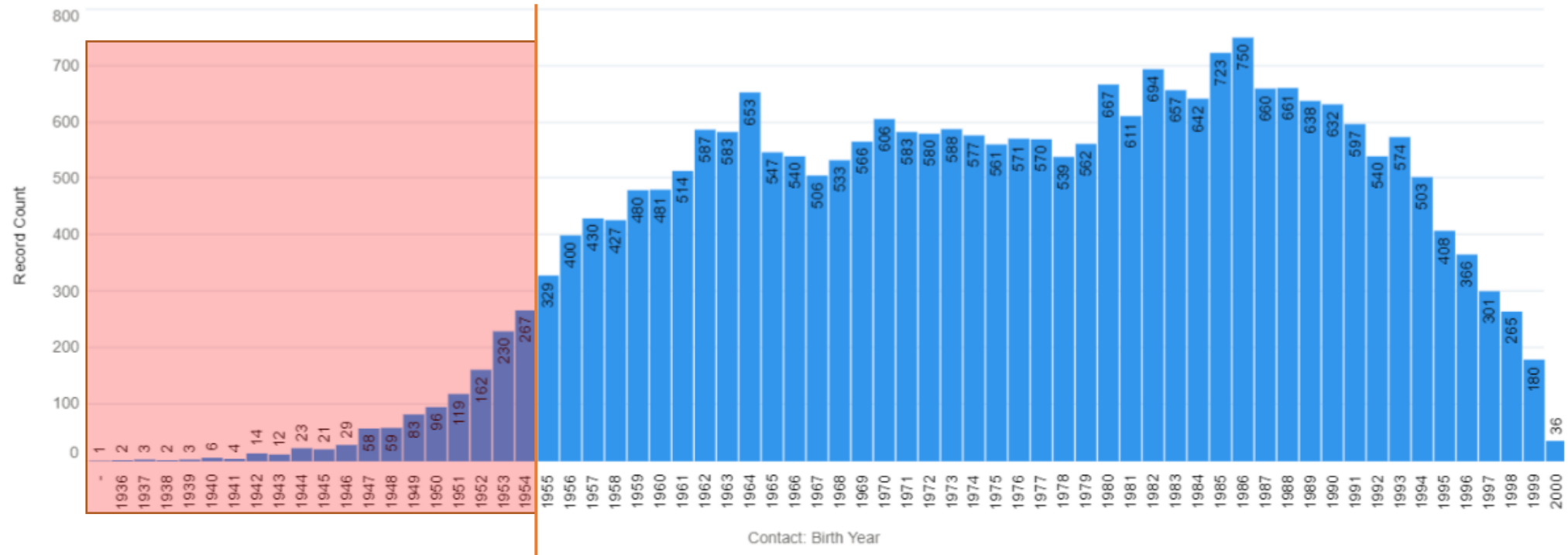
Top 10 in order:

Internal Medicine, Family Medicine, Diagnostic Radiology, Pediatrics, Emergency Medicine, Psychiatry, Anesthesiology, Obstetrics and Gynecology, and Pathology

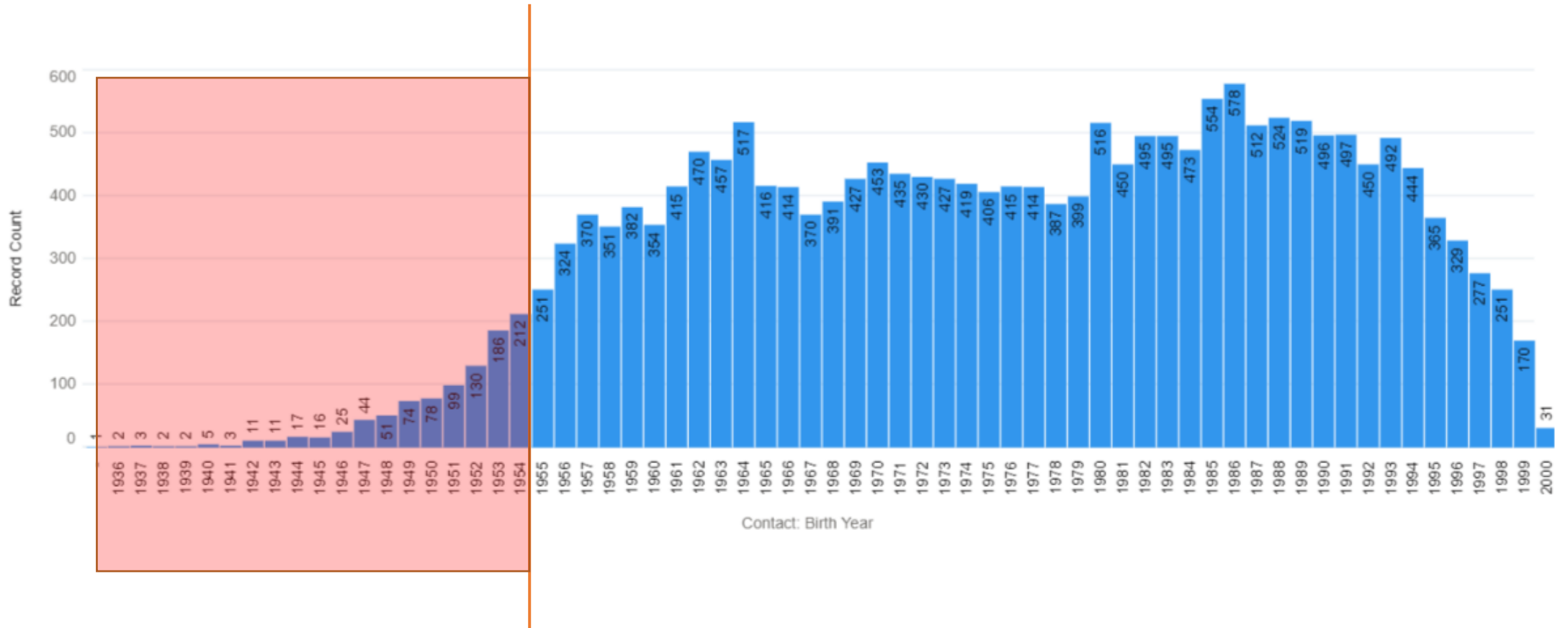
# Board of Nursing- All Nurse License Types



# Nursing Board **ALL TYPES** by birth year



# Nursing Board **Registered Nurses** by Birth Year





# Health Provider Shortage Areas

Table 2  
HPSA Scoring

Data Elements	HPSA Disciplines		
	Primary Care	Dental Health	Mental Health
Rational Service Area	Census Tract(s) County	Census Tract(s) County	Census Tract(s) County
Population to Provider Ratio	10	10	7
Percent of Population below 100% Federal Poverty Area	5	10	5
Travel Time to the Nearest Source of Care	5	5	5
Infant Health Index (Low birth weight or Infant Mortality Rate)	5	0	0
Water Fluoridation Status	0	1	0
Elderly Ratio (percent of people over age 65)	0	0	3
Youth Ratio (percent of people under age 18)	0	0	3
Substance Abuse Prevalence	0	00	1
Alcohol Abuse Prevalence	0		1
HRPA Score	25	26	25

Primary Care



Dental Health

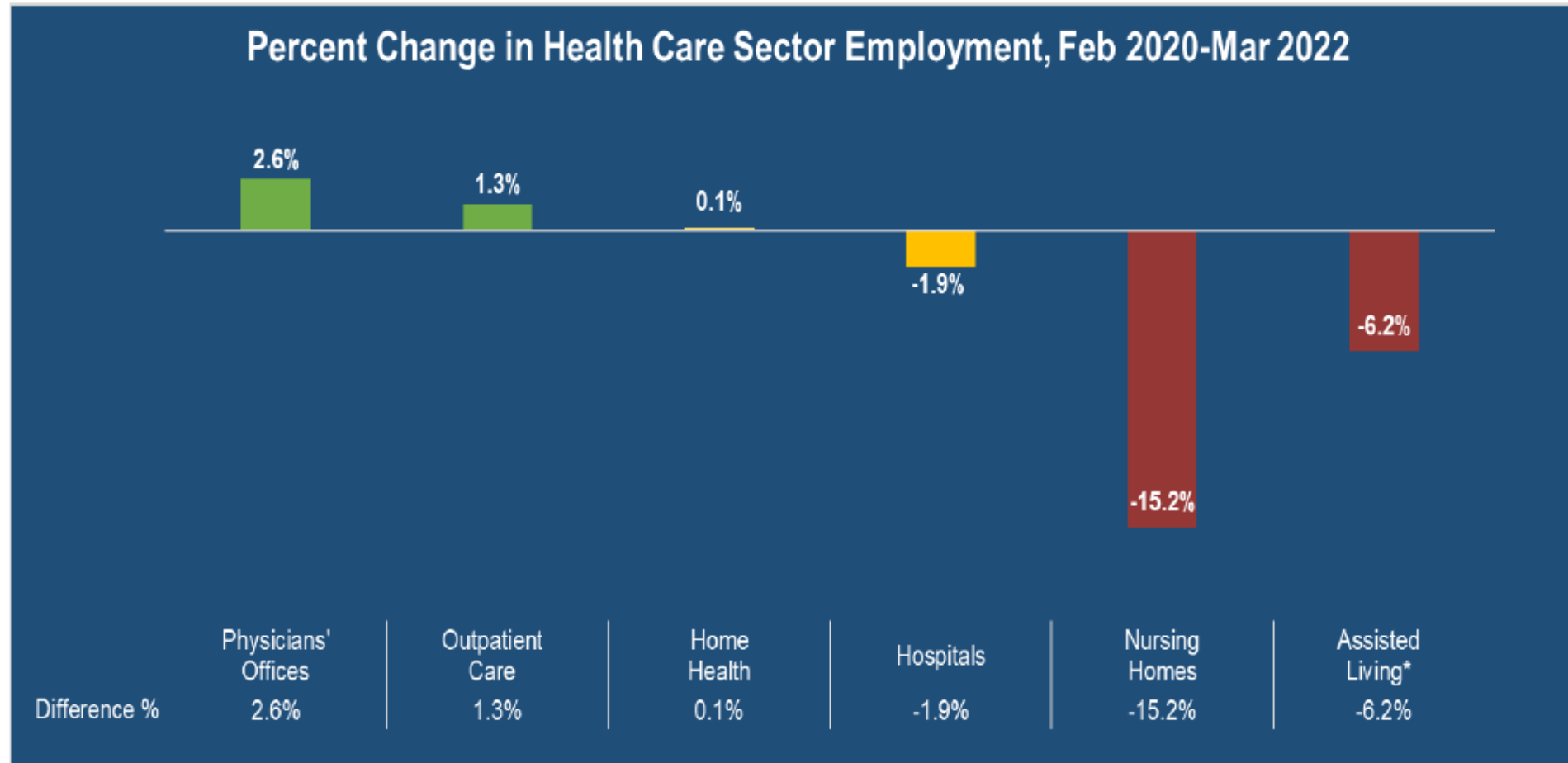


Mental Health



# Pandemic Influenced Health Care Sector Employment Changes

National Market Information: February 2022 – March 2022

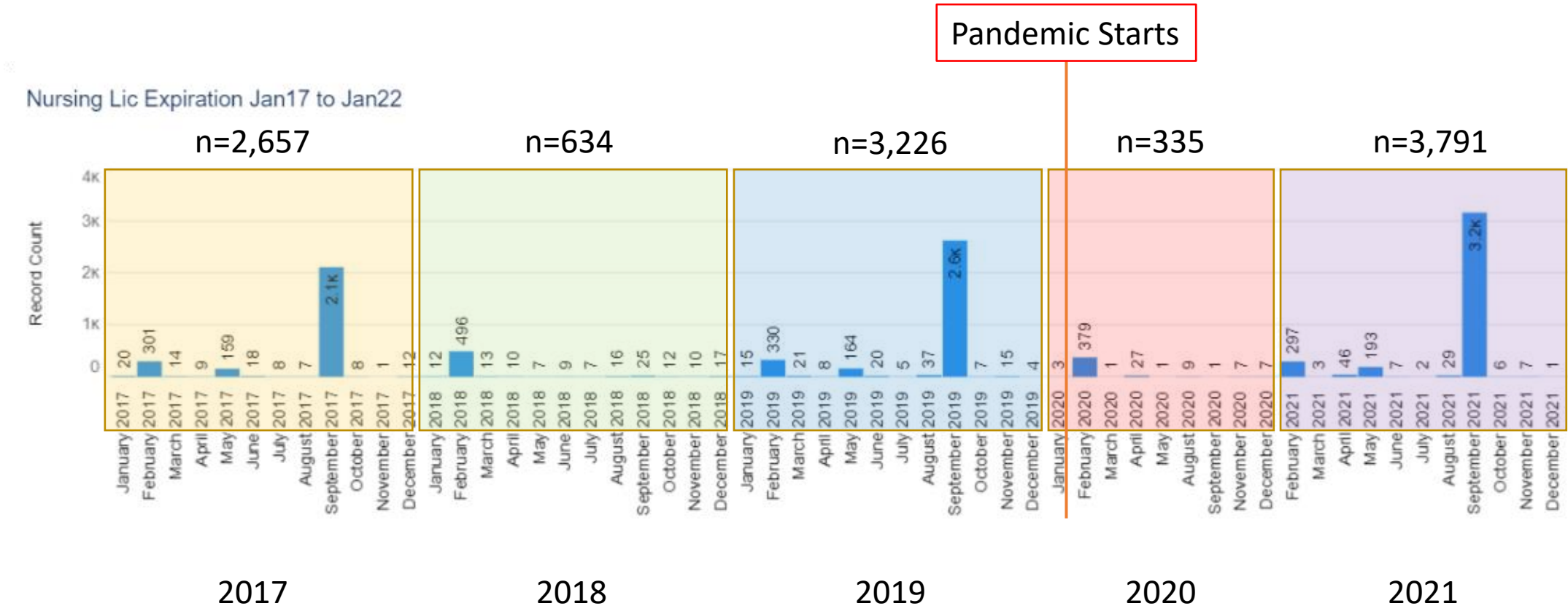


Source: Bureau of Labor Statistics (BLS) February 2020 – March 2022

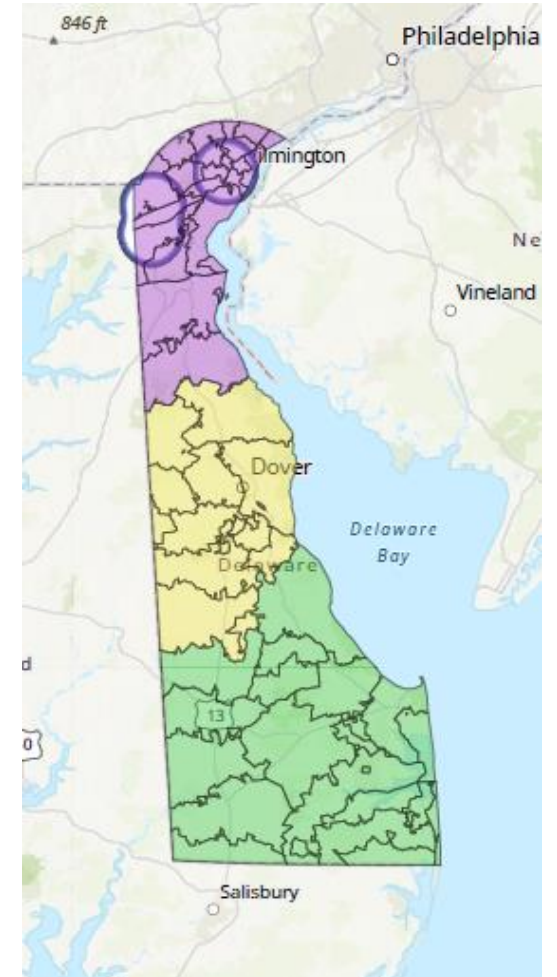
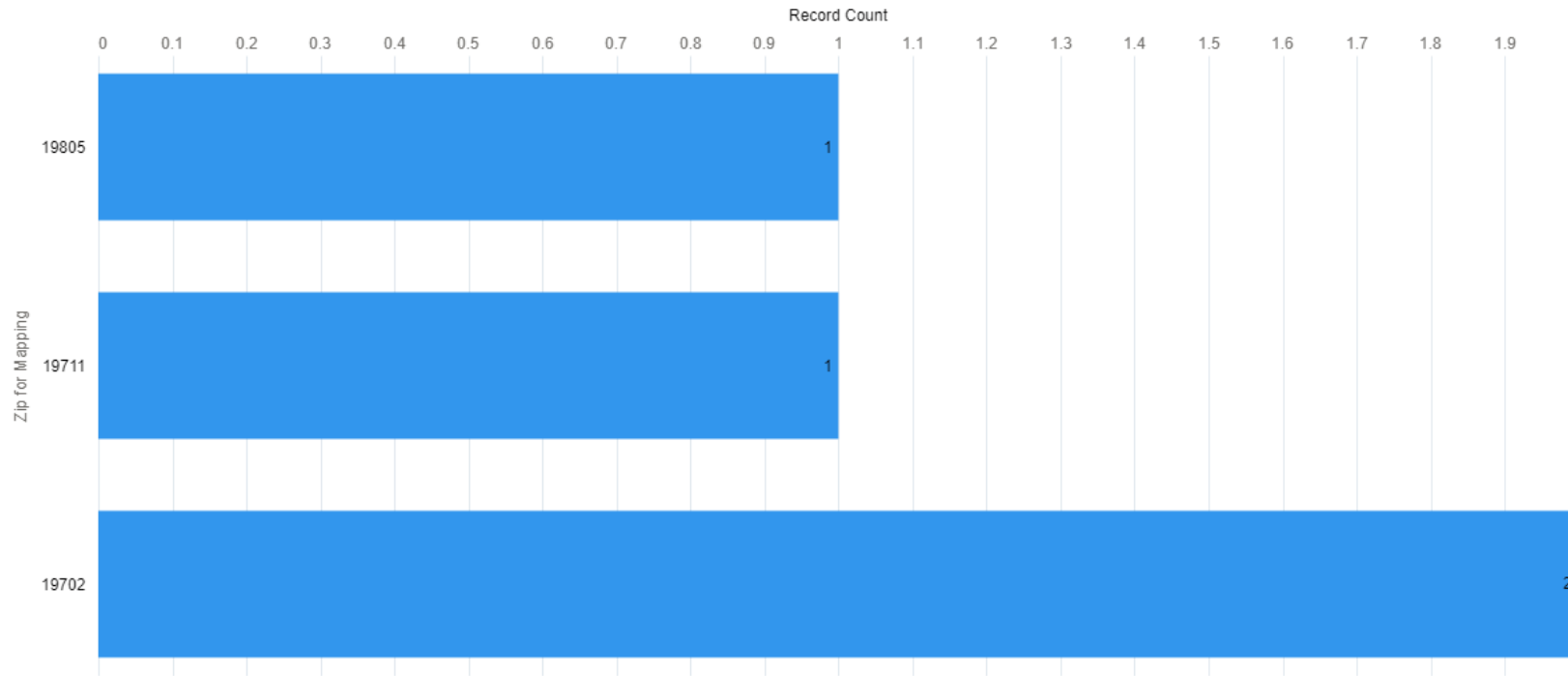
\*Assisted Living BLS data through February 2021

# Pandemic Influenced Nursing Sector in Delaware

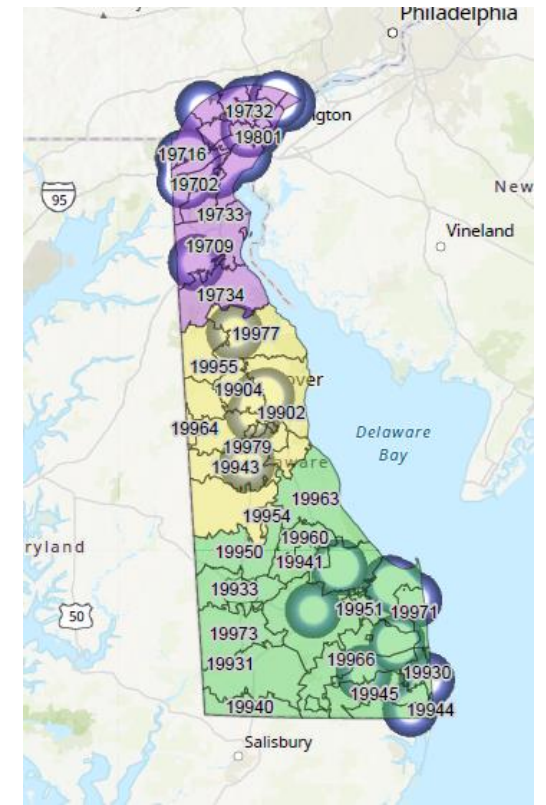
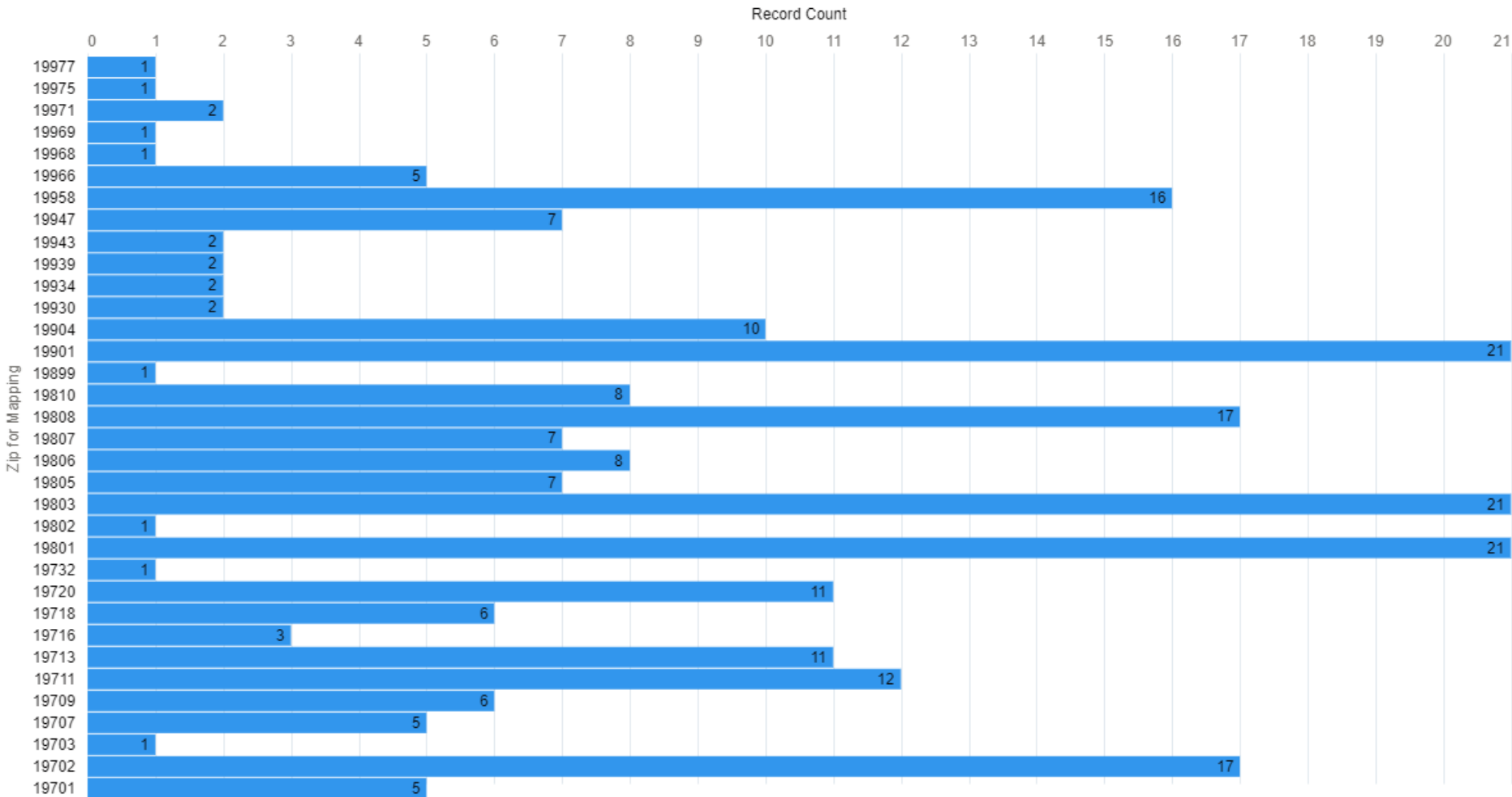
## Employment Changes



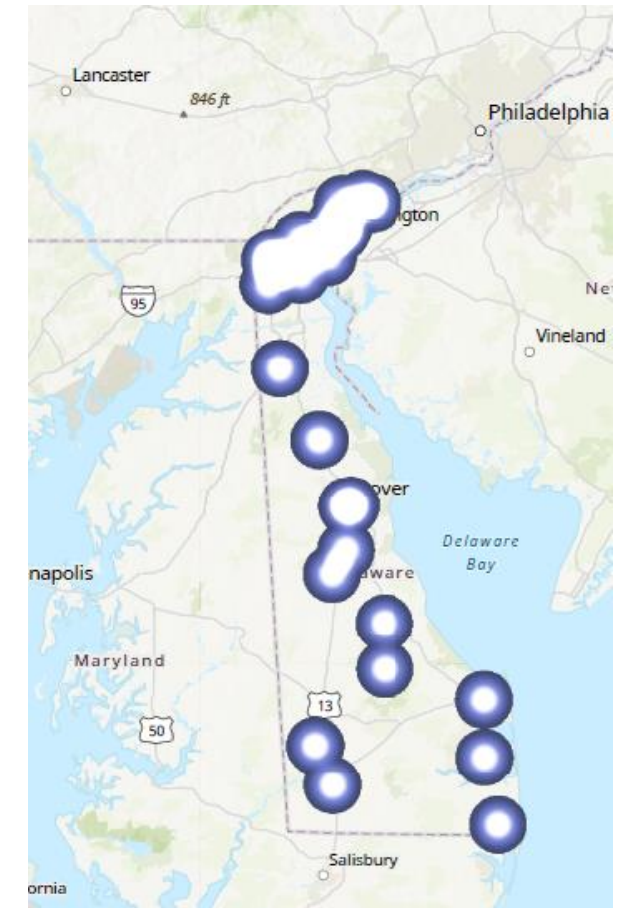
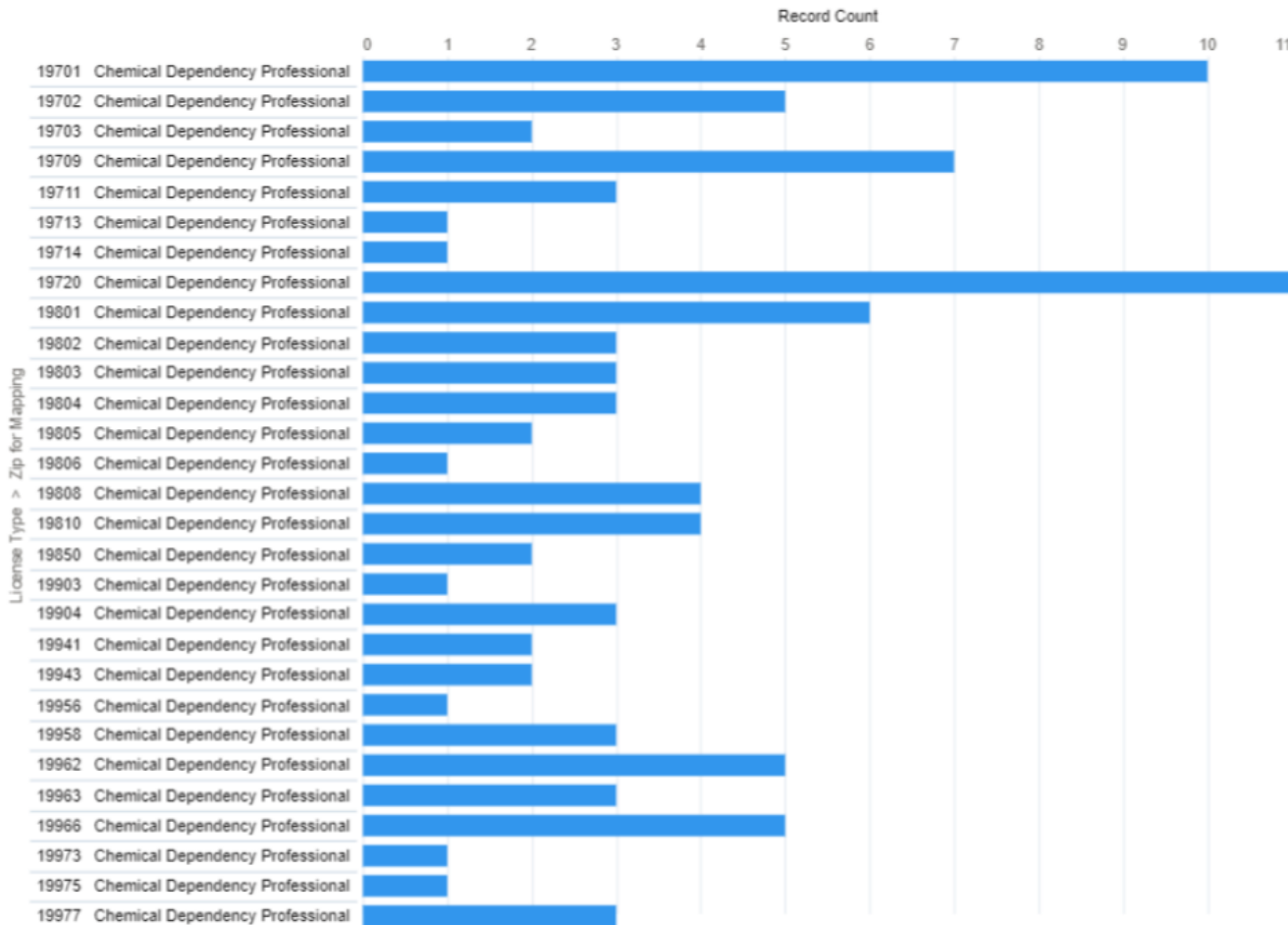
# Behavioral Health Workforce – Addiction Medicine Physicians (n=4)



# Behavioral Health Workforce – Psychiatric Physicians (n=242)

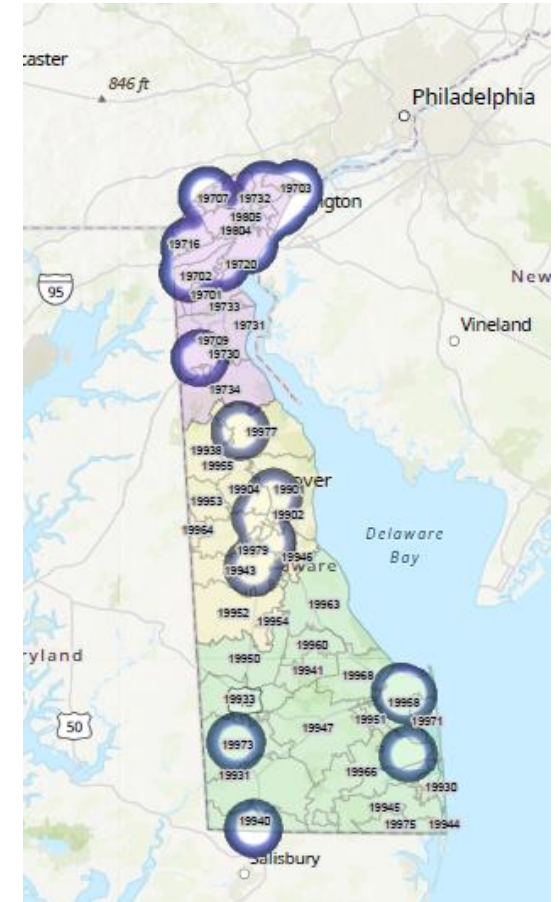
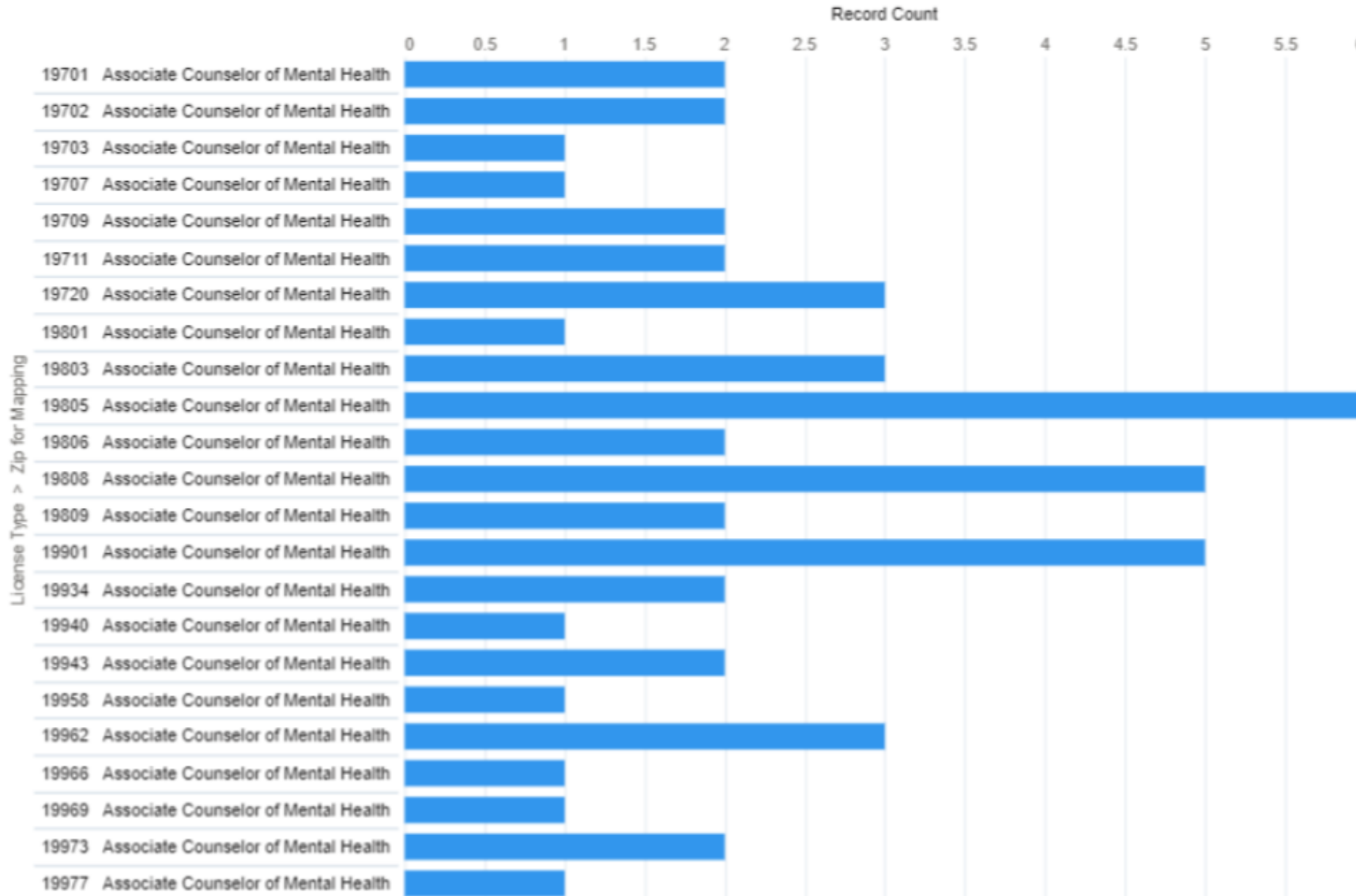


# Behavioral Health Workforce – Chemical Dependency Professionals (n=98)

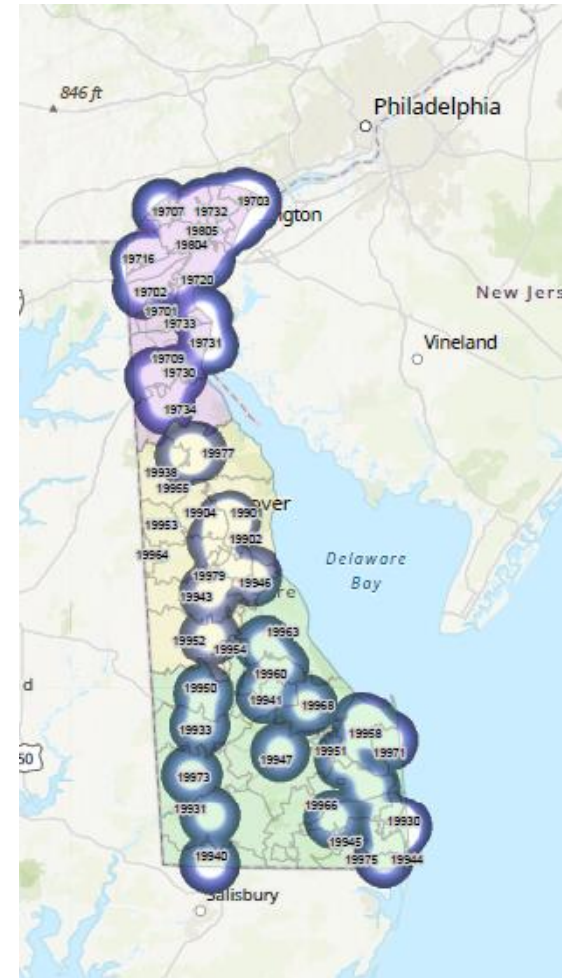
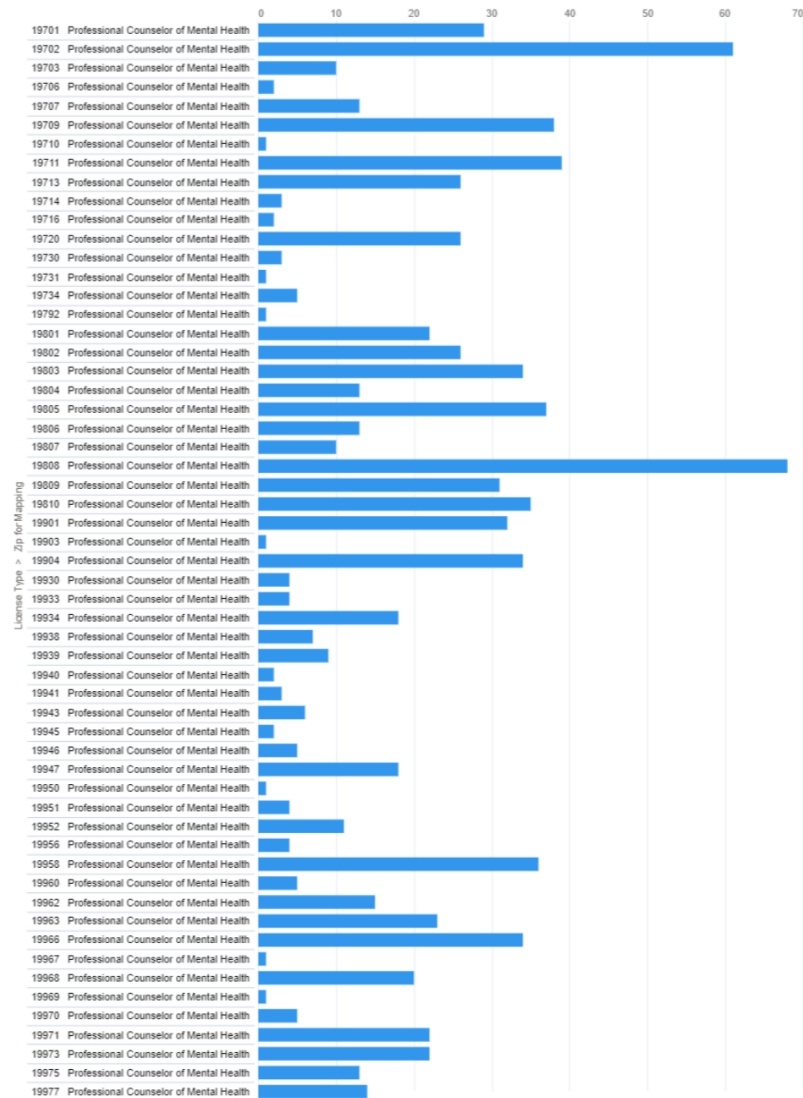




# Behavioral Health Workforce – Associate Counselor of Mental Health (n=51)

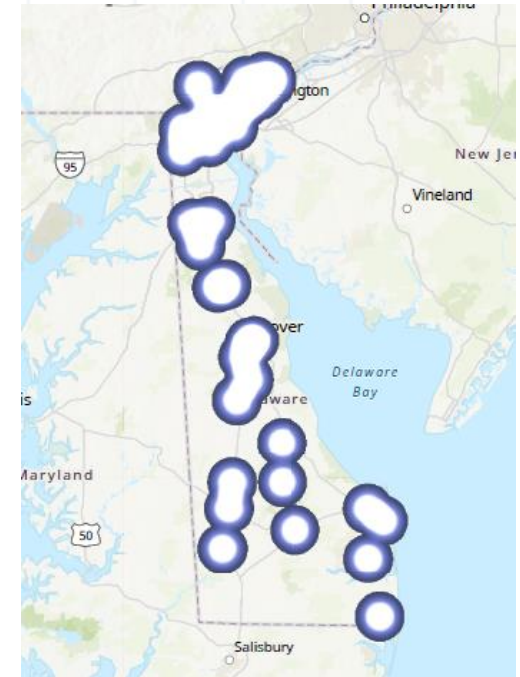
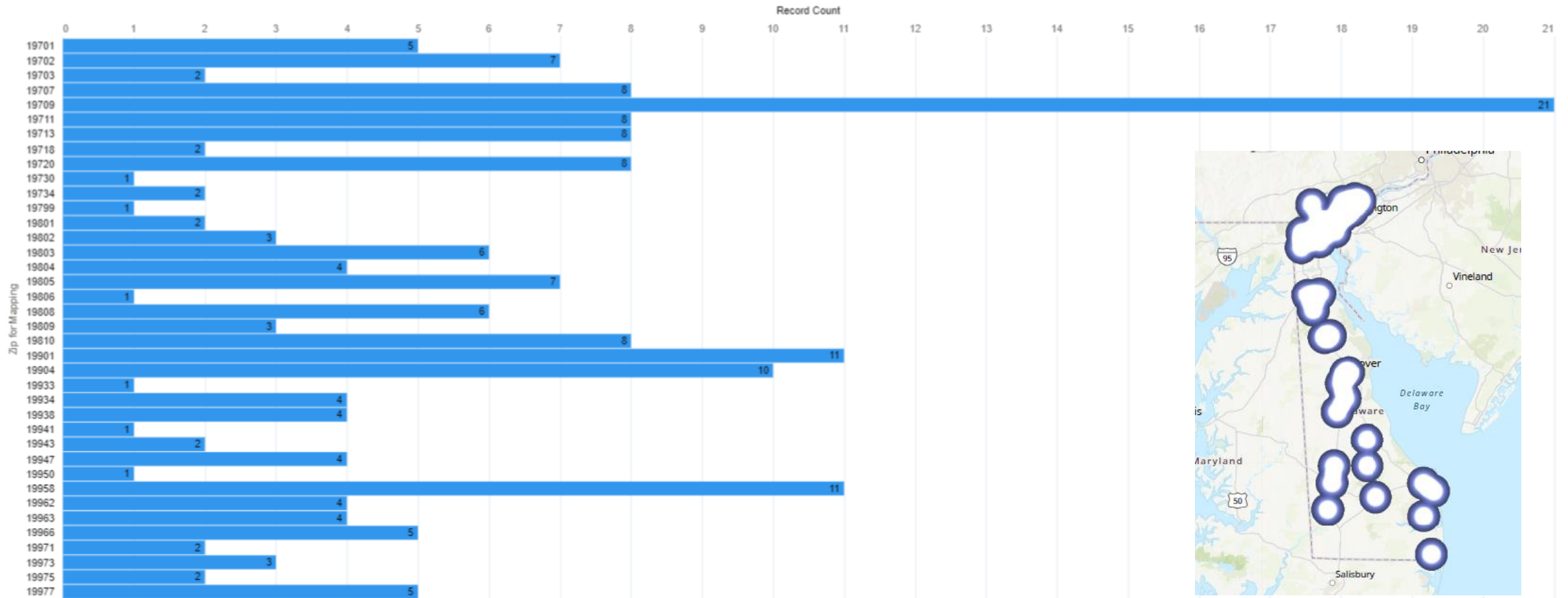


# Behavioral Health Workforce – Professional Counselor of Mental Health (n=925)



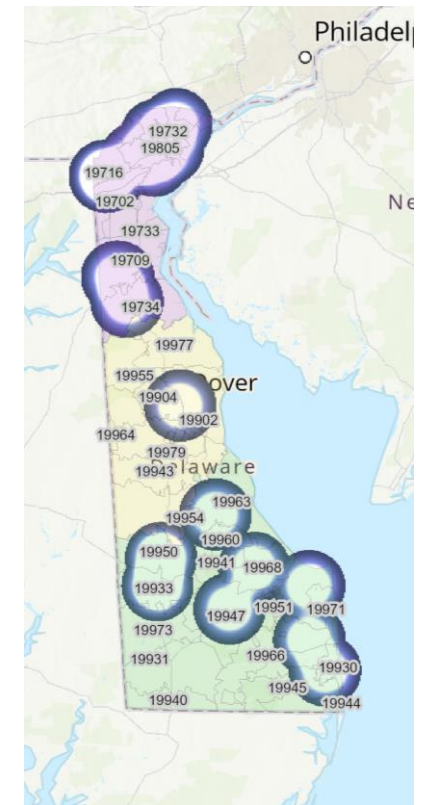
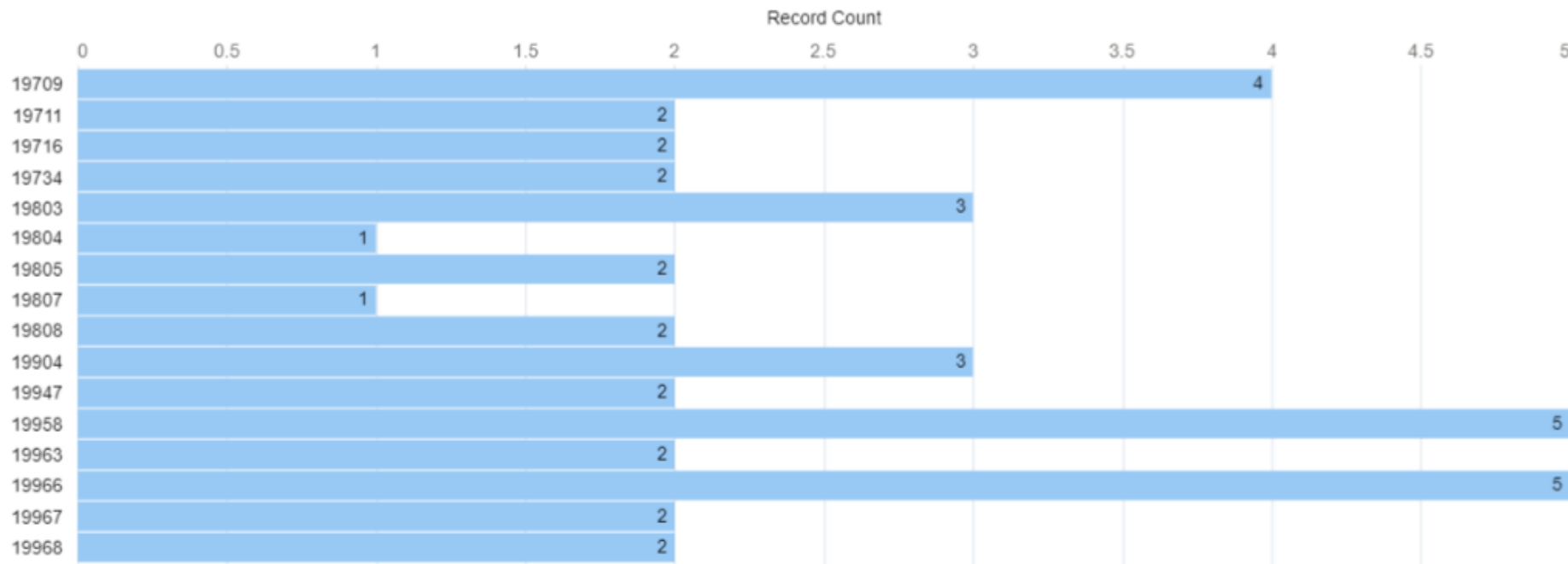


# Behavioral Health Workforce – Psychiatric Nurse Practitioners (n=187)



# Behavioral Health Workforce

## Psych/Mental Health CNS (n=40)



# What's missing?

## CNA, DSP, DA, MA and CHW

For various reasons the following foundational components of our healthcare system are not included in this report:

**Certified Nurse Assistants** – licensed in a different division

**Direct Service Providers** – licensed in a different division, and not at an individual level

**Dental Assistant** – licensed in a different division

**Medical Assistant** – not licensed in Delaware

**Community Health Workers** – not yet a licensed group in Delaware

# Key Takeaways

- The nursing sector is the largest single component of our healthcare delivery system. Registered Nurses make up the largest component with over 20,000 licenses followed by LPNs and Family Nurse Practitioners.
- Nursing represents a wide range of specialization, and scope of practice which compliments, and supplements other degree types in medicine including physicians and physician assistants.
- Distribution of our nursing colleagues throughout the state closely parallels that of other medical providers – and all are driven by the location of hospitals and clinics.
- Nursing adapts and grows, to serve the needs of our community, and encouraging nurses to practice to the top of their license is common sense.
- The pandemic, aging workforce, and growing population (especially in Kent and Sussex) show that supply of nursing is not keeping up with current and future demand statewide. This is no one's fault, and everyone's opportunity to address.
- The pandemic also highlighted the essential nature of caring for our own caregiver colleagues of all types, encouraging mental health and wellness, and embracing the profoundly challenging nature of caring for our fellow Delawareans.

# Delaware Health Force Response Activities

- 1<sup>st</sup> Quarter 2023, Division of Professional Regulation Data dashboard goes live at [dehealthsource.org](https://dehealthsource.org) as a part of our ongoing collaborative arrangement with DPR.
- Graduate Medical Education Expansion in Kent and Sussex, and select areas in New Castle County
- Expanded Student Financial Aid program starts loaning funds to Delaware residents attending Delaware school 1<sup>st</sup> Quarter 2023.
- Mini Medical School Pathways program for youth starts this spring with goal of 1500-2000 students per year.
- From our HRSA funded activities we are working diligently on Community Health Worker advancement in Delaware.

For the complete report: [dehealthforce.org](https://dehealthforce.org)

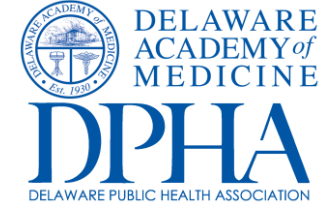
Contact information

Tim Gibbs, MPH, Principal Investigator

[tgibbs@delamed.org](mailto:tgibbs@delamed.org)

302-733-3919

2021-2023  
S. John Swanson, MD, President



Delaware Academy of Medicine Board of Directors

Officers

S. John Swanson, MD, President  
Lynn Jones, FACHE, President-elect  
Rita Landgraf, Vice President  
Stephen Eppes, MD, Secretary  
Jeff Cole, DDS, MBA, Treasurer  
Omar Khan, MD, MHS, Immediate Past President

Directors

David M. Bercaw, MD  
Lee P. Dresser, MD  
Eric T. Johnson, MD  
Erin M. Kavanaugh, MD  
Joeseeph Kelly, DDS  
Joseph F. Kestner, Jr, MD  
Brian W. Little, MD, PhD  
Arun V. Malhotra, MD  
Dnaiel J. Meara, MD, DMD  
Ann Painter, MSN, RN  
John P. Piper, MD  
Charmaine Wright, MD, MSHP

Emeritus

Barry S. Kayne, DDS

Delaware Public Health Association Advisory Council

Louis E. Bartoshesky, MD, MPH  
Gerard Gallucci, MD, MSH  
Erin K. Knight, PhD, MPH  
Melissa K. Melby, PhD  
Mia A. Papas, PhD  
Karyl T. Rattay, MD, MS  
William Swiatek, MA, AICP

Founded in 1930, the Delaware Academy of Medicine / Delaware Public Health Association is Delaware's affiliate to the American Public Health Association.



The Academy/DPHA publishes the Delaware Journal of Public Health, Delaware's only peer reviewed scientific journal dedicated to public and population health issues. Read the Journal at [djph.org](http://djph.org). Engage with us at [www.delamed.org](http://www.delamed.org)