

# POLICY DEVELOPMENT:

## Vaccination Initiatives

Dr. Nancy Fan, DHCC Chair

# DE COVID-19 Vaccine Update for HCC

JUNE 03, 2021



**DELAWARE HEALTH AND SOCIAL SERVICES**  
Division of Public Health

STATE OF DELAWARE

## DATA UPDATE

---

**55**

**New Cases**

*7-day Average*

**2.0%**

**Positive Tests**

*7-day Average*

**55**

**Hospitalizations**

**1,666**

**Lives Lost**

View more COVID-19 data: [de.gov/healthycommunity](https://de.gov/healthycommunity)

STATE OF DELAWARE

# COVID-19 VACCINE UPDATE

---

Total Vaccines  
Administered

**944,812**

---

Fully Vaccinated

**423,468**

---

**66.7%**

Delawareans 18+  
at least one dose

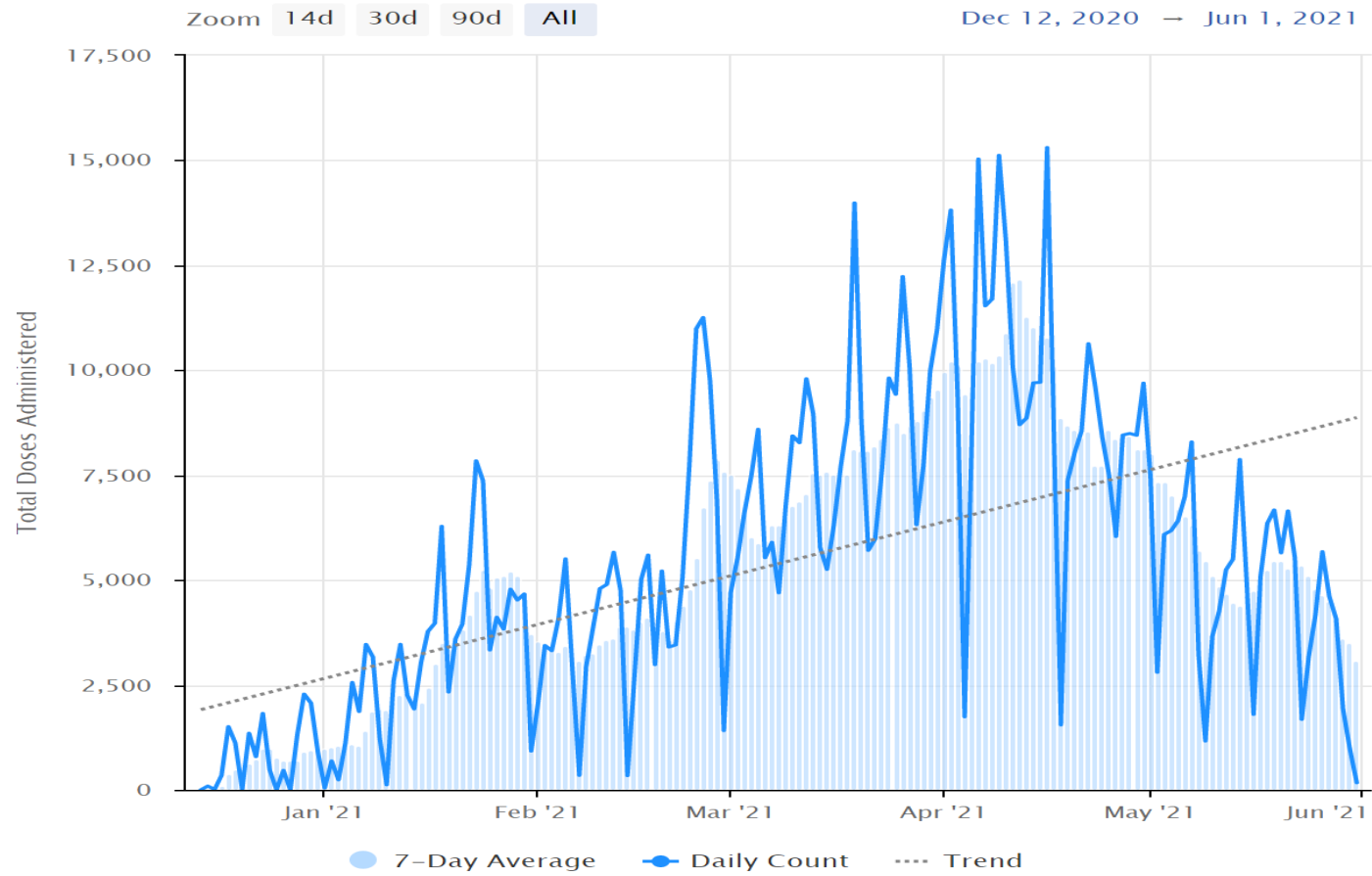
**91.6%**

Delawareans 65+  
at least one dose

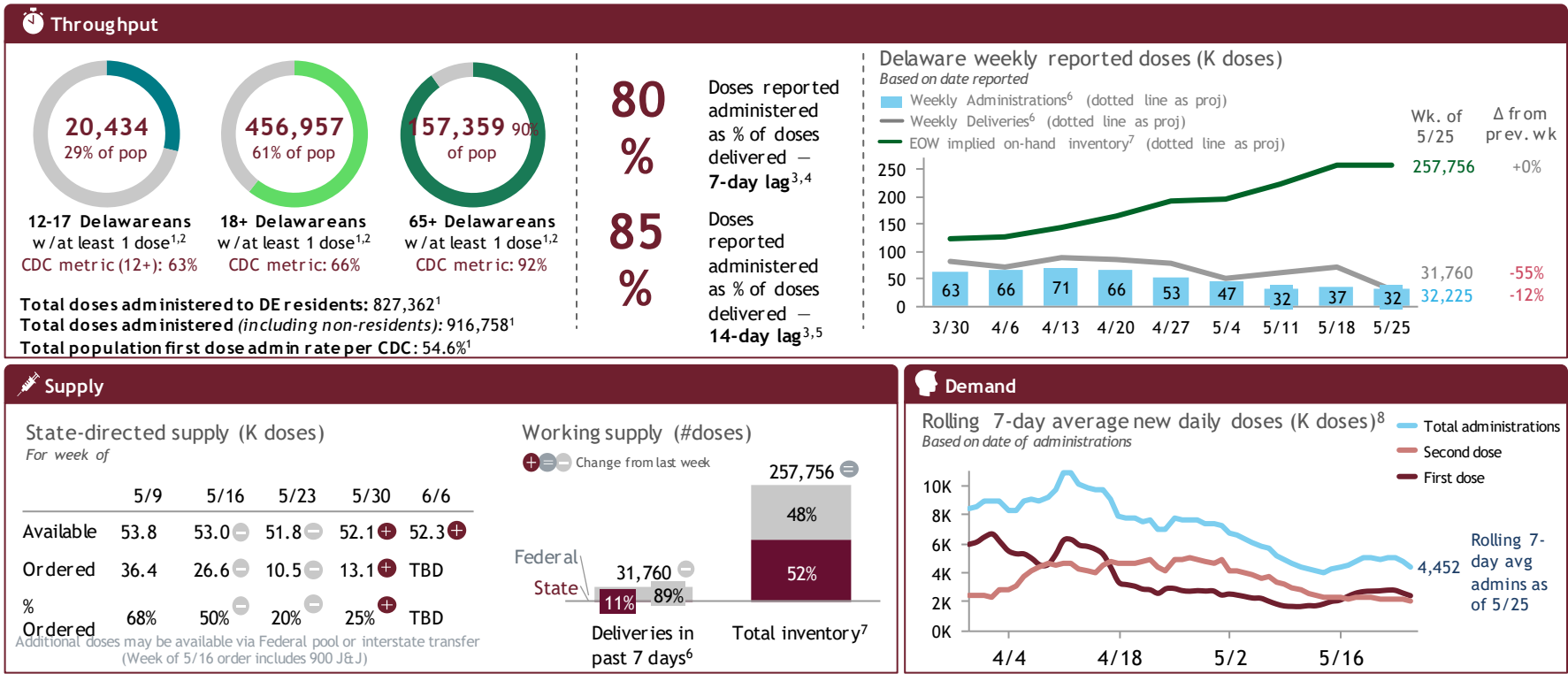
*Data as of: June 2, 2021 2:00PM*

**CDC Data:** [covid.cdc.gov/covid-data-tracker/#vaccinations](https://covid.cdc.gov/covid-data-tracker/#vaccinations)

## DOSES ADMINISTERED IN DELAWARE BY DATE ADMINISTERED



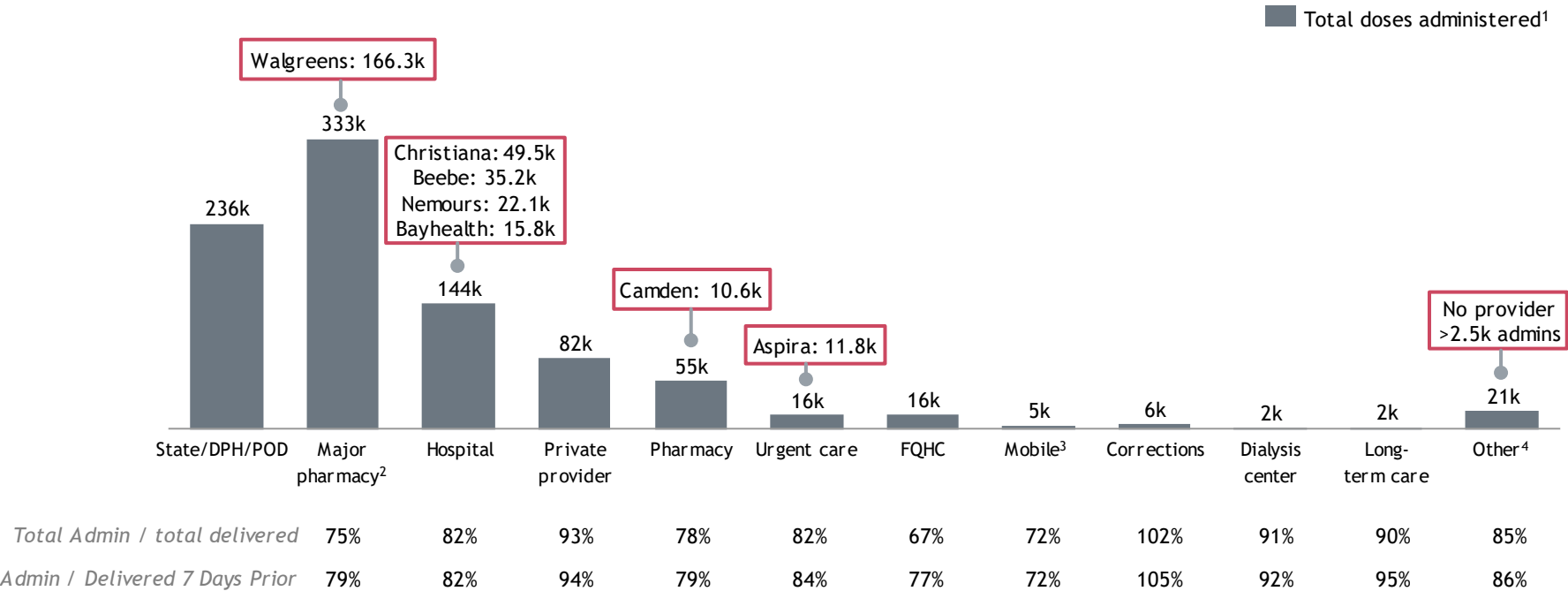
# Delaware COVID Vaccine weekly dashboard: Overall performance



# Total doses administered, by provider type

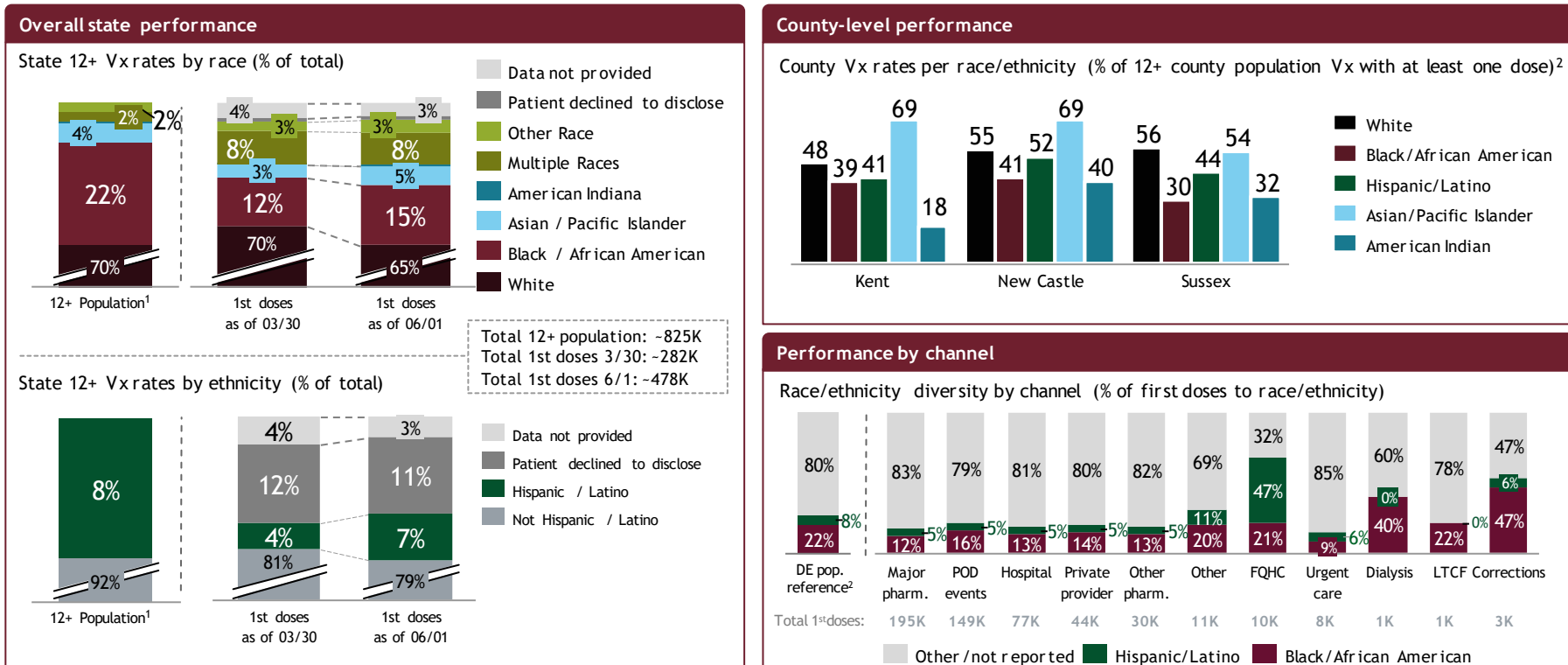
THROUGHPUT

Data as of 6/1



1. Total doses reported as administered on DelVax. Actual administrations may be higher due to reporting delays. 2. 'Major Pharmacies' include CVS, Walgreens, Rite-Aid, ACME Sav-On, Walmart, and Super-G. 3. 'Mobile' includes Gibney Mobile Healthcare, CarePort Vax Machine, and other mobile units. 4. 'Other' includes dental, blood banks, universities, corporations (essential workers), vets, non-hospital surgical centers, rehab facilities, etc. Source: Data sourced from DelVAX, Tiberius and DPH Warehouse Tracker as of 6/1, 8:30 a.m.

## Delaware COVID Vaccine weekly dashboard: Equity

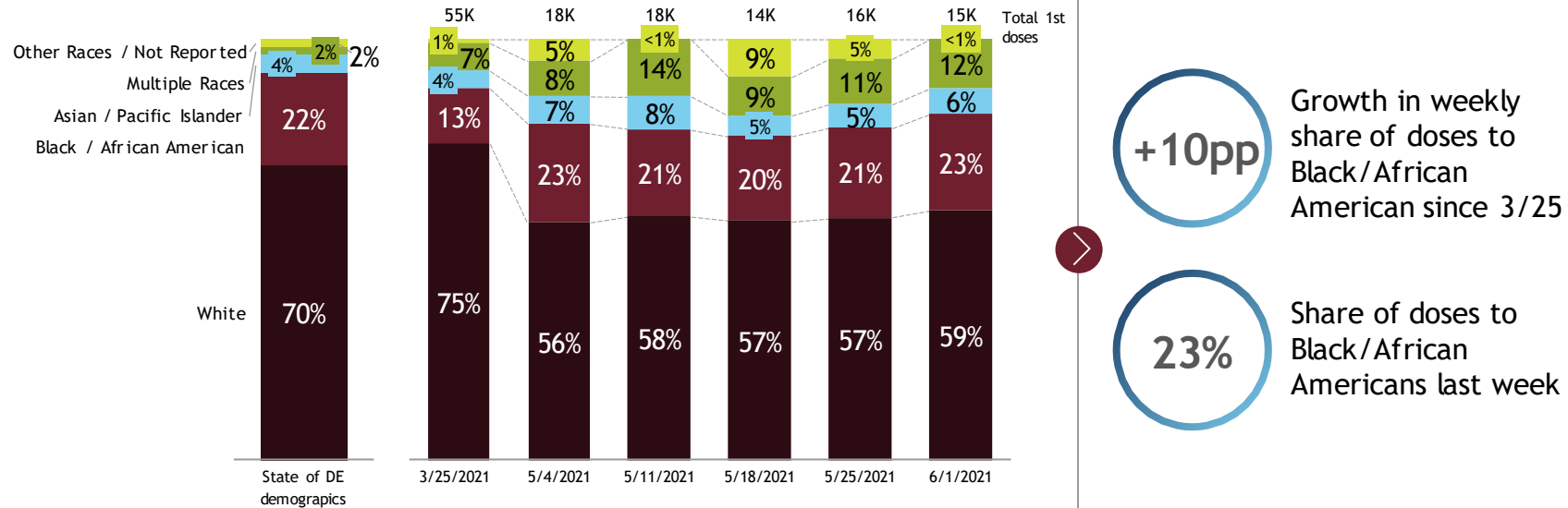


1. Based on DE 2019 ACS population estimates. 2. Based on DE 2019 ACS 5-year estimates. Note: Data is inclusive of provider, LTCF, FRPP. Figures may differ from those shown in MHC due to reporting data update lags. Source: DelVAX, Tiberius, DPH data.



The share of doses administered to non-white people is growing over time pointing to progress on equity

Weekly distribution of first doses administered (12+ population)



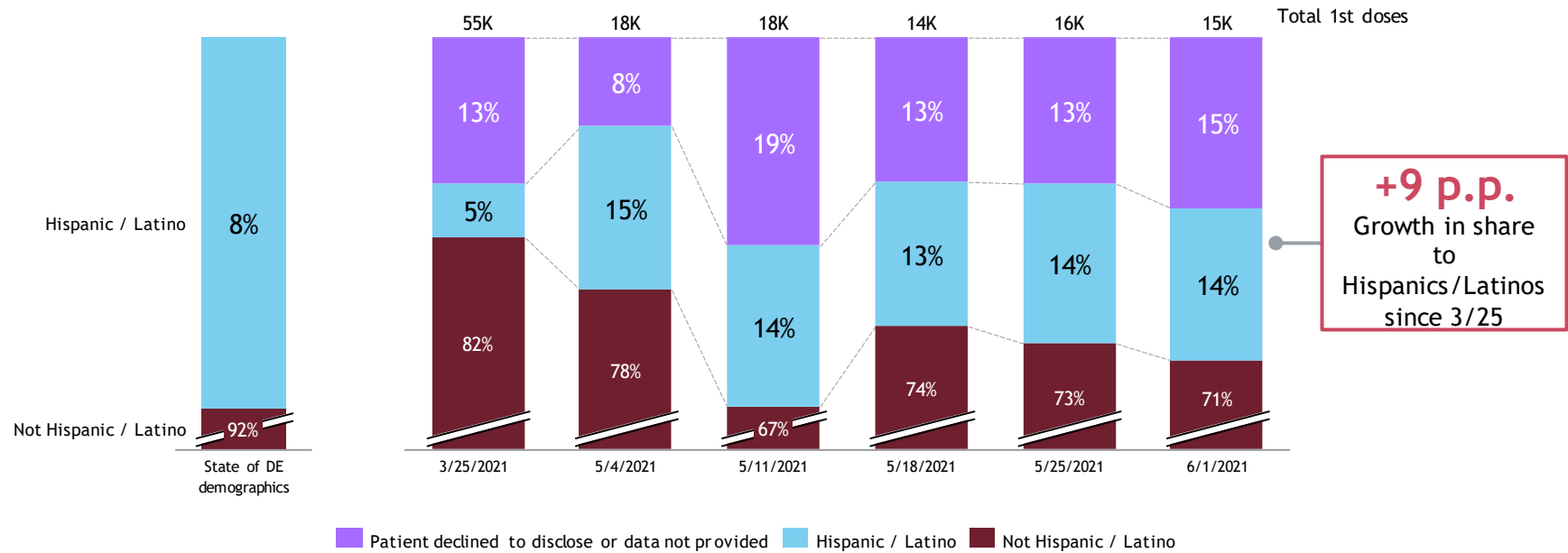
Source: DelVAX data provided by GR

# Share of first doses administered to people of color is improving over time

EQUITY

Data as of 6/1

Weekly distribution of first doses administered (12+ population)



Source: DeIVAX data provided by GR

# EQUITY

## Analysis of demographics across age and race/ethnicity points to the need for targeted interventions to reach young people

Data as of 6/1

Age	Total population		White		Black/African American		Hispanic/Latino		Asian/Pacific Islander		American Indian	
	Pop.	Admin rate	Pop.	Admin rate	Pop.	Admin rate	Pop.	Admin rate	Pop.	Admin rate	Pop.	Admin rate
12-15	47,743	24%	28,893	22%	12,748	13%	7,124	17%	1,706	39%	151	17%
16-17	23,255	40%	14,266	36%	6,222	25%	3,130	35%	793	64%	94	Suppr.
18-34	211,862	38%	135,089	36%	53,362	22%	23,764	39%	10,625	62%	789	24%
35-49	172,662	50%	115,434	44%	40,593	35%	17,998	54%	8,673	73%	708	35%
50-64	194,866	68%	142,894	60%	40,522	56%	10,171	71%	6,071	76%	1,176	28%
65+	174,174	90%	142,284	81%	25,108	73%	4,412	84%	4,169	75%	562	50%

DE State average 18+ Vx rate = 61%

Note: Individuals having received a first dose COVID-19 vaccine in Delaware, excludes Delawareans vaccinated outside the state; some data omitted due to suppression; total includes individuals reporting no race/ethnicity or multiple race/ethnicities not shown in columns.  
Source: DelVAX data accessed via Green River.

<10pp below 18+ state avg.  
≥10 pp below 18+ state avg.

## EQUITY

SVI mapping tool helps to visualize priority areas in the state

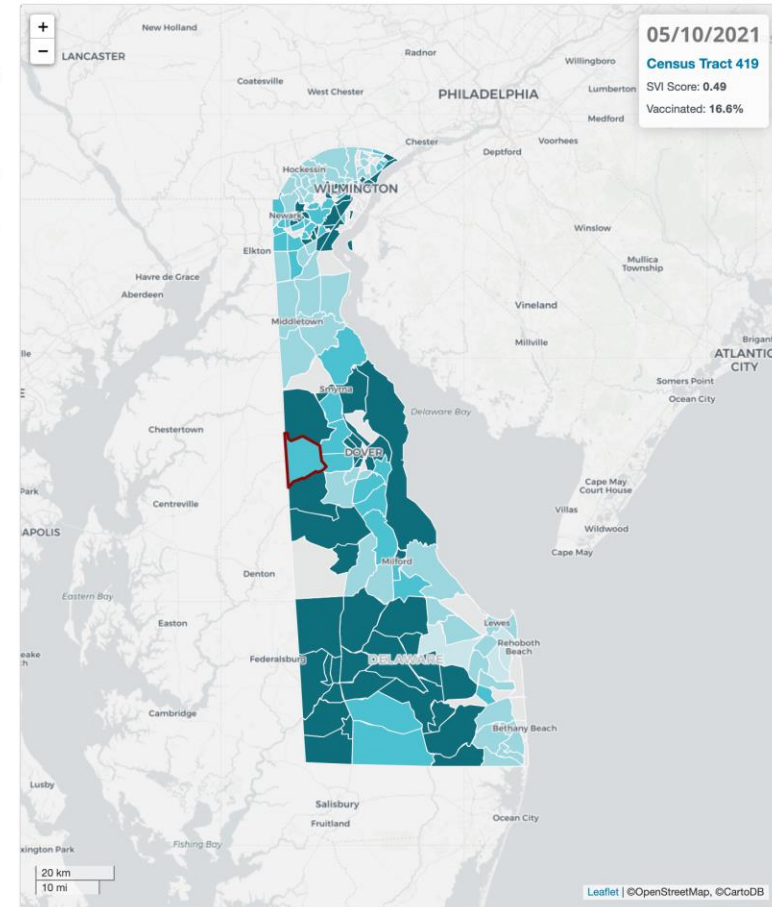
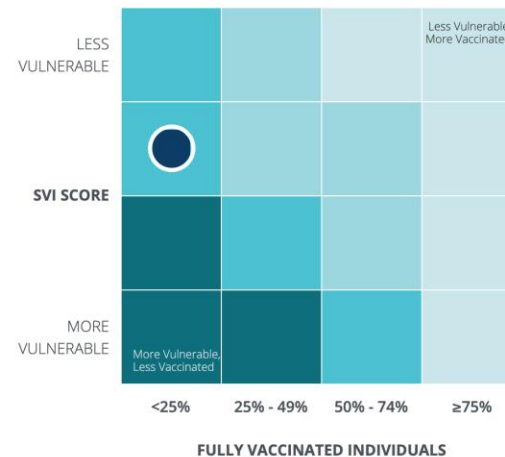
STATE OF DELAWARE / Available for counties and census tracts [Search locations](#)

## Linking Vaccination Coverage with CDC's Social Vulnerability Index

### SUPPORTING VACCINATIONS IN OUR COMMUNITY

Social vulnerability refers to the potential negative effects influenced by external stresses on human health such as natural or human-caused disasters or disease outbreaks. The CDC's social vulnerability index (SVI) indicates the relative vulnerability of census tracts in Delaware.

The map depicts a combination of CDC's SVI with the percentage of persons in the census tract who are fully vaccinated. Census tracts with vulnerable populations and lower vaccination coverage are shown in a dark blue color. As vaccination coverage increases and moves into higher vaccination coverage levels, the blue color changes from dark blue to lighter shades of blue. Communities can use this tool to understand their population's level of vulnerability in the context of vaccination coverage and continue to support efforts that increase vaccination in our most vulnerable communities with the lowest vaccination coverage.



# We continue to strive for equity through a variety of initiatives targeting priority zip codes

## Expanding the DPH footprint in underserved communities across the state



### Operating **9 vaccination sites** in SVI zip

- Available for appointments & walk-ins
- Supported by direct outreach to businesses and neighborhoods to notify local community



### Planning **deployment of 3 trailers** during the month of June

- Distributing Vx in underserved neighborhoods
- Supported by direct outreach prior to and day-of to notify local community
- Using CHWs to conduct literature drops throughout the state



### Providing Vx **education and scheduling support at school**

- Prioritizing most vulnerable SVI zip codes

# We continue to strive for equity through a variety of initiatives targeting priority zip codes

## Leveraging data to target priority populations

Identifying **individuals due for a second dose** and connecting them with a Vx provider

Exploring opportunities to leverage **contact tracing data** to outreach to people to encourage vaccination

## Engaging Community Partners to enhance our reach

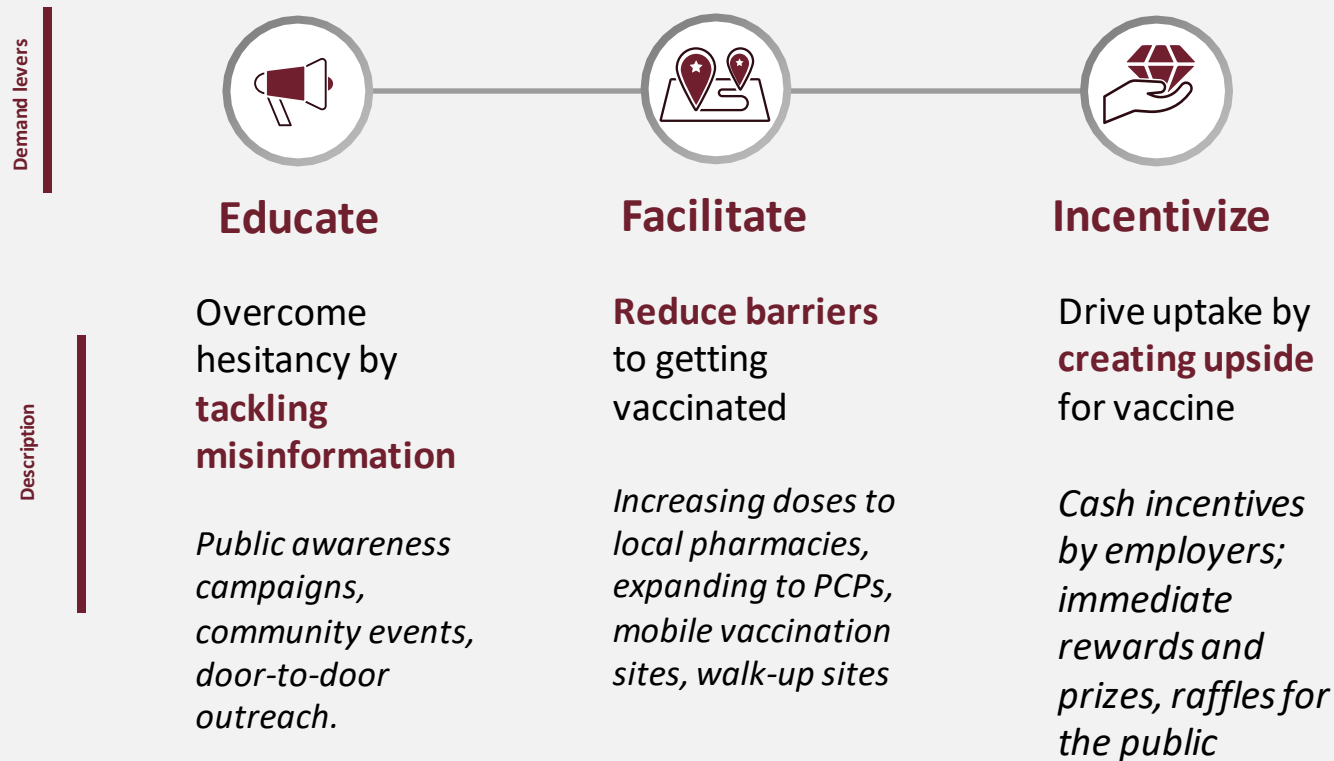
Preparing **funding opportunities for community-based organizations** to enable grassroots education

- Utilizing additional funding through the immunization program
- Targeting increase in number of people vaccinated through the CBO efforts

Pursuing **Vx events at community events**

- Developing of target events occurring over the next several months

# Demand for vaccine can be generated by pushing on 3 levers



# DEwINS!

*Vaccine Incentive Program*

**Learn more  
at DEwins.org**

**Get your  
vaccine and a  
shot at prizes.**





(Wilmington)

**Mrs. Robino's Restaurant:  
Free spaghetti & meatballs  
with proof  
of vaccination**

*(dine-in only, limit one per week per customer)*

View all offers:  
**[dewins.org/partners](https://dewins.org/partners)**

*Photo: Mrs. Robino's Restaurant, Facebook*



Vaccination Event at  
**The Starboard**  
**Saturday, June 5**  
**4-9 p.m.**

---

## June 30: Final Raffle for **ALL Vaccinated Delawareans**



[DEwins.org](http://DEwins.org)

## Additional Areas of Focus

- Health System/Vaccine Providers:
  - Business as Usual Mindset
  - Education
  - Promotional Campaign
  - Incentives
- Essential Businesses/Front Line Workers
  - Education & promotion
  - Access
  - Incentives
    - Paid Time Off

**SIGN UP FOR YOUR  
COVID-19  
VACCINE**

*today*



**de.gov/getmyvaccine  
1-833-643-1715**



Trinity Health  
Mid-Atlantic

Saint Francis  
Healthcare

## COVID-19 Vaccination Initiatives

*Nancy Fan, MD*, Saint Francis Women's Center Greenhill  
Saint Francis Healthcare



## Introduction

- On behalf of Saint Francis Healthcare and Trinity Health Mid-Atlantic, I want to thank the Delaware Health Care Commission with the Department of Health and Social Services for the honor and opportunity to speak to you today.
- At Saint Francis Healthcare, we believe in the Saint Francis Way. The Saint Francis Way is the commitment of our colleagues to work within our Mission and Core Values.
- At Trinity Health Mid-Atlantic, we serve together in the spirit of the Gospel as a compassionate and transforming healing presence within our communities.



Saint Francis Healthcare  
701 North Clayton Street  
Wilmington, Delaware 19805

## COVID-19 Vaccinations

- Saint Francis Healthcare started COVID-19 vaccination efforts in the second week of December of 2020, administering vaccines to high-risk colleagues with high-risk daily COVID exposure.
- By January of 2021, all colleagues and providers in the community that were eligible to receive the vaccine were scheduled for an appointment.
- In February of 2021, Delaware moved into Phase 1B which included high-risk patients, 65 years of age and older.
- And by March of this year, vaccines became available for the entire community at large.





## At Saint Francis Healthcare

### Community Focused Distribution

- We began to focus on pop-up community events utilizing our St. Clare Van in partnership with New Castle County.
- Our efforts concentrated on underserved neighborhoods in Delaware.
- Saint Francis is now expanding our efforts to on-demand vaccines within the hospital and emergency department including maintaining our weekly vaccine clinic.
- Currently Saint Francis is administering Johnson and Johnson, Pfizer and Moderna as requested.
- Future plans include administering Pfizer to the community.
- Saint Francis has administered **9,878** total vaccines to date.

Saint Clare Medical Outreach Van



# BAYHEALTH VACCINATION INITIATIVES

## June 2021

# Bayhealth support of COVID vaccinations

Dec 2020 through May 2021

## Summary of vaccinations given

***Total 1<sup>st</sup> and 2<sup>nd</sup> doses of Vaccines for Employees and Physicians = 5,793***

***Total 1<sup>st</sup> and 2<sup>nd</sup> doses of Vaccines given at all Community Events = 11,394***

***Grand total vaccine given = 17,187***

1. Bayhealth assisted Public Health in mass drive-through vaccine events in Jan/Feb at Dover DMV.
2. We transitioned to inside mass vaccine events at Blue Hen Corporate Center from January to May. We first targeted healthcare workers and the 65+ age group before transitioning to essential worker population.
3. As the vaccine inventory increased and the number of vaccinated individuals increased, Bayhealth targeted smaller community groups including residents at 55+ living communities, businesses, high school students and residents of DE Housing Authority communities in Kent County, partnering with Reverend Rita Paige. We are a member of the Kent County Coalition- Vaccines for the Black and Brown Communities and continue to host smaller vaccine events to meet the needs of our underserved communities.



Lis Cote, RN – 1<sup>st</sup> person in DE to receive the COVID 19 vaccine



Bayhealth staff providing  
vaccines along with  
Polytech  
adult education nurses

# Beebe Healthcare – C19 Vaccine Response

- TIMELINE

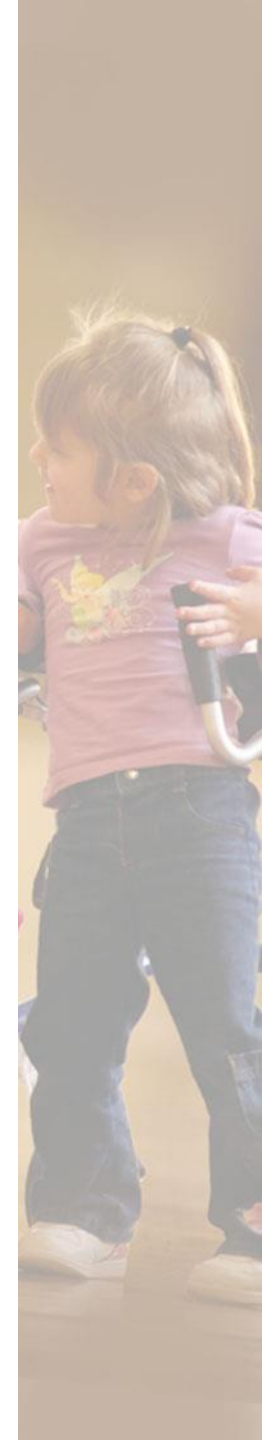
- Started with Team Members in December 2020 (Tier 1A)
- Shortly moved to Tier 1B & beyond
- Worked with multiple agencies to decrease vaccine disparity
  - First State Community Center
  - Multiple Churches and Employers in Sussex County
  - State of Delaware / DMV event
- COVID-19 Book Mobile Partnership
  - Beebe Healthcare
  - Sussex County EMS
  - State of DE Library
- <https://www.beebehealthcare.org/behindthescenes>
- <https://www.nytimes.com/2021/05/20/us/mobile-vaccine-covid.html>



# Beebe Healthcare – C19 Vaccine Response

- Total Beebe Vaccine Doses **37,000 doses**
- **Book Mobile has provided** **>500 doses**
- *Sussex County has provided 216,945 (as of 6/1/2021)*
- *Beebe has provided **17%** of all doses of C19 vaccine to Sussex County*
- Vaccine Location Offerings (Previous & Current)
  - Millsboro Vaccine In Clinic
  - Beebe Healthcare Walk In Center
  - Community Events
  - Book Mobile
- Community Education
  - Working with community partners to educate

- ✓ We hosted 24 community vaccination clinics.
- ✓ During the 24 clinics, 5,470 people were vaccinated.
- ✓ Nemours Children's Health System served as a state partner and hospital hub to vaccinate our most vulnerable senior citizens throughout the state and 1a healthcare personnel
- ✓ Initially, targeted low income and minority communities
- ✓ Partners included, but not limited to the following: Latin American Community Center, First State Community Action Agency, Kingswood Community Center, Claymont Community Center, Wilmington Senior Center, B'Nai Brith Senior Center, Faith Based Organizations, Ministry of Caring, St. Patrick's, DE DOE Early Childhood Educators
- ✓ Partnered with community-based organizations to communicate and register targeted seniors and communities





- ✓ Offered vaccinations to the broader DE Population as vaccination criteria was expanded
- ✓ Partnered with New Castle County Vo-Tech School District to vaccinate students
- ✓ Surveyed patient families to establish vaccination plan for Nemours' patients
- ✓ Initially, vaccinated most complex pediatric patients
- ✓ Expanded vaccination efforts to general patient population 12 years and older
- ✓ Partnered and trained DEMA volunteers to register targeted communities
- ✓ Established vaccination plan for Nemours Senior Care Population (65+, low-income patients living in DE)

